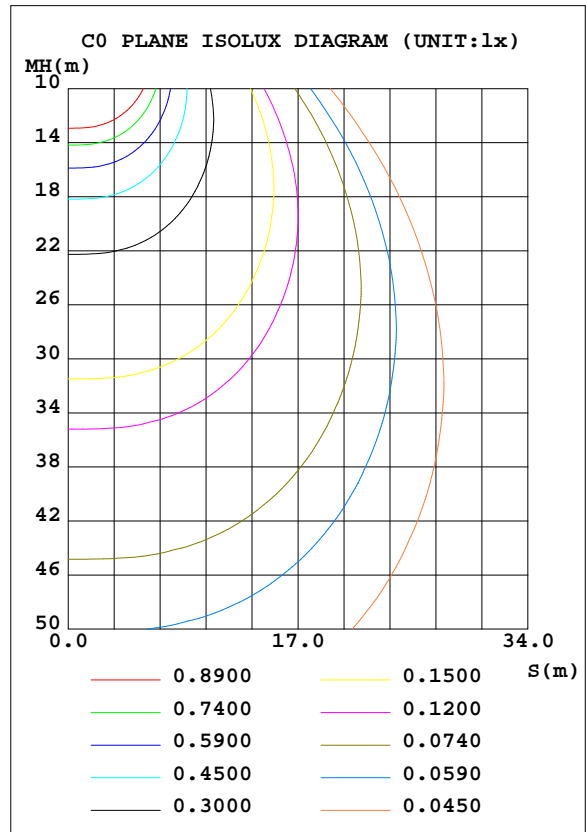
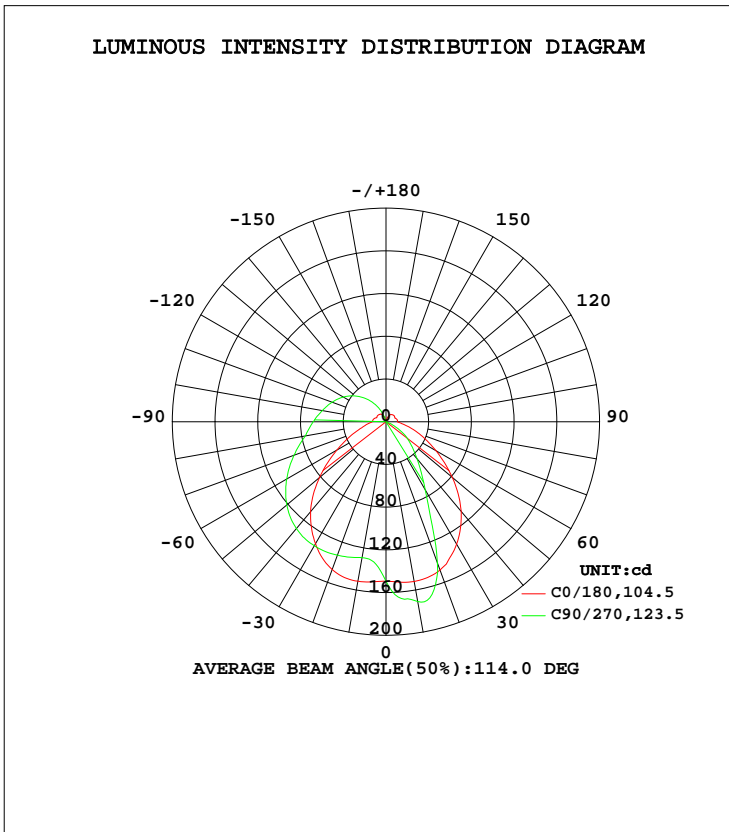


LUMINAIRE PHOTOMETRIC TEST REPORT

Test:U:120.0V I:0.1051A P:12.27W PF:0.9729 Lamp Flux:570.103x1 lm		
NAME: LED luminaires	TYPE:N/A	WEIGHT:N/A
SPEC.:ASD-LVF24M-2D12CC-BK 3000K	DIM.: N/A	SERIAL No.:N/A
MFR.: ASD Lighting corp	SUR.:N/A	Shielding Angle:N/A

DATA OF LAMP		PHOTOMETRIC DATA Eff: 46.46 lm/W			
MODEL	PSZ2GH221125001-10	I _{max} (cd)	174.0	S/MH(C0/180)	1.30
NOMINAL POWER(W)		LOR(%)	100.0	S/MH(C90/270)	0.92
RATED VOLTAGE(V)	120	TOTAL FLUX(lm)	570.10	η UP, DN(C0-180)	18.3,54.0
NOMINAL FLUX(lm)	570.103	CIE CLASS	SEMI-D.	η UP, DN(C180-360)	1.0,26.7
LAMPS INSIDE	1	η up(%)	19.3	CIBSE SHR NOM	1.25
TEST VOLTAGE(V)	120	η down(%)	80.7	CIBSE SHR MAX	1.25



C Range: 0 - 360DEG
 C Interval: 22.5DEG
 Test Speed: HIGH
 Temperature:25.1DEG
 Operators:Evan
 Test Date:2022-11-29

γ Range: 0 - 180DEG
 γ Interval: 1.0DEG
 Test System:EVERFINE GO-R5000_V2 SYSTEM V2.0.351
 Humidity:42%
 Test Distance:2.532m [K=1.0000]
 Remarks:

ZONAL FLUX DIAGRAM

ZONAL FLUX DIAGRAM:

γ	C0	C45	C90	C135	C180	C225	C270	C315	γ	Φ zone	Φ total	%lum,lamp
10	151.5	131.5	129.3	131.5	151.9	169.0	170.9	167.6	0- 10	14.31	14.31	2.51,2.51
20	147.2	133.2	132.9	132.8	147.8	169.8	140.9	165.7	10- 20	42.42	56.74	9.95,9.95
30	132.0	132.8	134.1	131.6	132.3	126.2	73.63	120.6	20- 30	62.06	118.8	20.8,20.8
40	109.9	128.6	130.5	127.1	109.6	70.42	45.34	68.86	30- 40	70.00	188.8	33.1,33.1
50	81.36	120.7	121.2	119.0	81.06	40.85	28.31	40.88	40- 50	71.06	259.9	45.6,45.6
60	53.20	109.1	107.3	107.5	53.87	23.01	12.88	23.35	50- 60	65.19	325.0	57,57
70	32.54	95.11	91.69	93.86	33.16	6.619	0.4951	6.922	60- 70	55.03	380.1	66.7,66.7
80	19.91	80.04	76.90	79.29	18.36	0.0732	0.0885	0.0824	70- 80	43.94	424.0	74.4,74.4
90	12.91	69.03	68.20	68.96	10.92	0.1004	0.1209	0.1171	80- 90	35.94	459.9	80.7,80.7
100	12.22	59.60	60.63	59.69	10.73	0.1122	0.1339	0.1324	90-100	30.70	490.6	86.1,86.1
110	10.59	50.78	53.77	50.88	9.613	0.0911	0.1065	0.1063	100-110	25.73	516.4	90.6,90.6
120	9.781	41.73	46.32	41.77	9.441	0.0780	0.0874	0.0876	110-120	20.44	536.8	94.2,94.2
130	9.756	32.19	37.65	32.20	9.412	0.0795	0.0870	0.0884	120-130	15.06	551.9	96.8,96.8
140	9.189	22.13	27.68	22.13	8.792	0.1182	0.0859	0.0992	130-140	9.881	561.8	98.5,98.5
150	7.993	12.06	16.87	12.04	7.440	0.5451	0.0977	0.1844	140-150	5.520	567.3	99.5,99.5
160	4.743	3.215	6.148	3.098	4.245	1.616	0.1295	0.1936	150-160	2.276	569.6	99.9,99.9
170	1.782	0.9786	0.3014	0.7452	1.381	1.031	0.1619	0.1741	160-170	0.4970	570.1	100,100
180	0.2187	0.2216	0.2346	0.2457	0.2179	0.2203	0.2265	0.2393	170-180	0.0429	570.1	100,100
DEG	LUMINOUS INTENSITY:cd									UNIT:lm		

Conical surface Flux(90deg): 224.7 lm

%lum = 39.4%
%lamp = 39.4%

Conical surface Flux(120deg): 325.04 lm

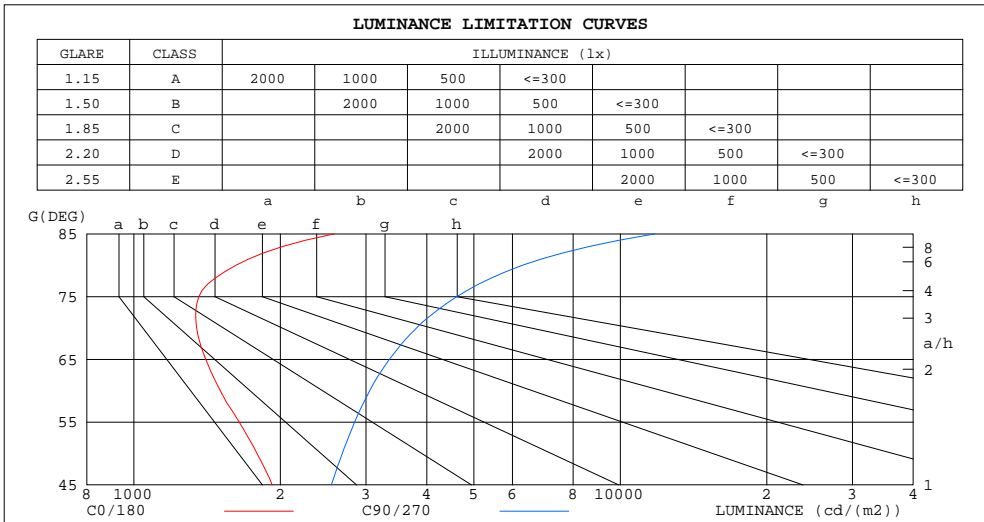
%lum = 57.0%
%lamp = 57.0%

C Range: 0 - 360DEG
C Interval: 22.5DEG
Test Speed: HIGH
Temperature:25.1DEG
Operators:Evan
Test Date:2022-11-29

γ Range: 0 - 180DEG
γ Interval: 1.0DEG
Test System:EVERFINE GO-R5000_V2 SYSTEM V2.0.351
Humidity:42%
Test Distance:2.532m [K=1.0000]
Remarks:

LUMINANCE LIMITATION CURVES

Test:U:120.0V I:0.1051A P:12.27W PF:0.9729 Lamp Flux:570.103x1 lm		
NAME: LED luminaires	TYPE:N/A	WEIGHT:N/A
SPEC.:ASD-LVF24M-2D12CC-BK 3000K	DIM.: N/A	SERIAL No.:N/A
MFR.: ASD Lighting corp	SUR.:N/A	Shielding Angle:N/A



LUMINANCE cd/(m2)		
G (DEG)	C0/180	C90/270
85	2583	11783
80	1622	6296
75	1360	4613
70	1346	3811
65	1405	3352
60	1506	3052
55	1647	2842
50	1791	2682
45	1925	2546

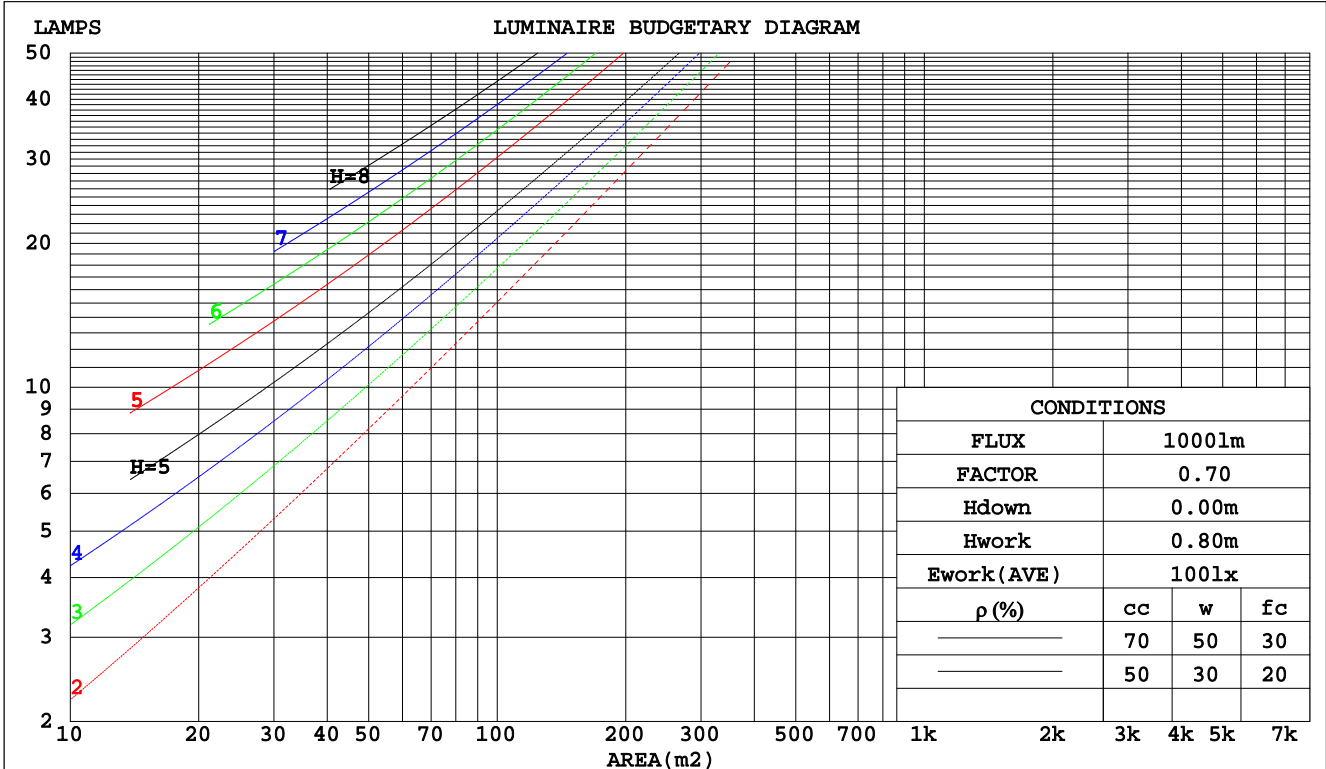
C Range: 0 - 360DEG
 C Interval: 22.5DEG
 Test Speed: HIGH
 Temperature:25.1DEG
 Operators:Evan
 Test Date:2022-11-29

γ Range: 0 - 180DEG
 γ Interval: 1.0DEG
 Test System:EVERFINE GO-R5000_V2 SYSTEM V2.0.351
 Humidity:42%
 Test Distance:2.532m [K=1.0000]
 Remarks:

CU AND LUMINAIRE BUDGETARY ESTIMATE DIAGRAM

Test:U:120.0V I:0.1051A P:12.27W PF:0.9729 Lamp Flux:570.103x1 lm		
NAME: LED luminaires	TYPE:N/A	WEIGHT:N/A
SPEC.:ASD-LVF24M-2D12CC-BK 3000K	DIM.: N/A	SERIAL No.:N/A
MFR.: ASD Lighting corp	SUR.:N/A	Shielding Angle:N/A

pcc	80%			70%			50%			30%			10%			0
	50%	30%	10%	50%	30%	10%	50%	30%	10%	50%	30%	10%	50%	30%	10%	0
pw																0
pfc	20%			20%			20%			20%			20%			0
RCR	RCR:Room Cavity Ratio															
	Coefficients of Utilization(CU)															
0.0	1.14	1.14	1.14	1.10	1.10	1.10	1.00	1.00	1.00	.92	.92	.92	.84	.84	.84	.81
1.0	.97	.92	.87	.93	.88	.84	.85	.81	.78	.78	.75	.72	.71	.69	.67	.63
2.0	.84	.76	.70	.80	.73	.68	.73	.68	.63	.67	.63	.59	.61	.58	.55	.52
3.0	.73	.65	.58	.70	.62	.56	.64	.58	.53	.59	.54	.49	.54	.50	.46	.43
4.0	.65	.56	.49	.62	.54	.47	.57	.50	.45	.52	.47	.42	.48	.43	.39	.37
5.0	.58	.49	.42	.55	.47	.41	.51	.44	.39	.47	.41	.36	.43	.38	.34	.32
6.0	.52	.43	.37	.50	.42	.36	.46	.39	.34	.43	.37	.32	.39	.34	.30	.28
7.0	.47	.38	.32	.45	.37	.31	.42	.35	.30	.39	.33	.28	.36	.31	.27	.25
8.0	.43	.34	.29	.41	.33	.28	.38	.32	.27	.36	.30	.25	.33	.28	.24	.22
9.0	.39	.31	.26	.38	.30	.25	.35	.29	.24	.33	.27	.23	.31	.26	.22	.20
10.0	.36	.28	.23	.35	.28	.23	.33	.26	.22	.31	.25	.21	.29	.23	.20	.18



C Range: 0 - 360DEG
 C Interval: 22.5DEG
 Test Speed: HIGH
 Temperature:25.1DEG
 Operators:Evan
 Test Date:2022-11-29

γ Range: 0 - 180DEG
 γ Interval: 1.0DEG
 Test System:EVERFINE GO-R5000_V2 SYSTEM V2.0.351
 Humidity:42%
 Test Distance:2.532m [K=1.0000]
 Remarks:

WEC AND CCEC

Test:U:120.0V I:0.1051A P:12.27W PF:0.9729 Lamp Flux:570.103x1 lm		
NAME: LED luminaires	TYPE:N/A	WEIGHT:N/A
SPEC.:ASD-LVF24M-2D12CC-BK 3000K	DIM.: N/A	SERIAL No.:N/A
MFR.: ASD Lighting corp	SUR.:N/A	Shielding Angle:N/A

ρcc	80%			70%			50%			30%			10%			0
ρw	50%	30%	10%	50%	30%	10%	50%	30%	10%	50%	30%	10%	50%	30%	10%	0
ρfc	20%			20%			20%			20%			20%			0
RCR	RCR:Room Cavity Ratio						Wall Exitance Coefficients(WEC)									
0.0																
1.0	.357	.203	.064	.344	.196	.062	.320	.183	.059	.297	.171	.055	.277	.160	.052	
2.0	.312	.171	.053	.301	.166	.051	.279	.155	.048	.258	.145	.045	.240	.135	.043	
3.0	.280	.149	.045	.269	.144	.043	.249	.135	.041	.231	.126	.039	.214	.118	.037	
4.0	.253	.132	.039	.244	.128	.038	.226	.120	.036	.209	.112	.034	.193	.105	.032	
5.0	.231	.118	.034	.223	.114	.033	.206	.107	.032	.191	.101	.030	.177	.094	.028	
6.0	.213	.107	.031	.205	.104	.030	.190	.097	.028	.176	.092	.027	.163	.086	.025	
7.0	.197	.097	.028	.190	.095	.027	.176	.089	.026	.163	.084	.024	.151	.079	.023	
8.0	.183	.090	.025	.177	.087	.025	.164	.082	.023	.152	.077	.022	.141	.072	.021	
9.0	.171	.083	.023	.165	.081	.023	.154	.076	.022	.143	.072	.020	.132	.067	.019	
10.0	.161	.077	.021	.155	.075	.021	.144	.071	.020	.134	.067	.019	.125	.063	.018	

ρcc	80%			70%			50%			30%			10%			0
ρw	50%	30%	10%	50%	30%	10%	50%	30%	10%	50%	30%	10%	50%	30%	10%	0
ρfc	20%			20%			20%			20%			20%			0
RCR	RCR:Room Cavity Ratio						Ceiling Cavity Exitance Coefficients(CCEC)									
0.0	.338	.338	.338	.289	.289	.289	.197	.197	.197	.113	.113	.113	.036	.036	.036	
1.0	.332	.304	.279	.284	.261	.240	.194	.180	.166	.112	.104	.097	.036	.033	.031	
2.0	.324	.281	.245	.278	.242	.212	.190	.167	.148	.110	.097	.087	.035	.032	.028	
3.0	.317	.265	.223	.271	.228	.193	.186	.159	.136	.108	.093	.080	.035	.030	.026	
4.0	.309	.252	.209	.265	.218	.181	.182	.152	.128	.105	.089	.075	.034	.029	.025	
5.0	.301	.242	.198	.259	.209	.173	.178	.146	.122	.103	.086	.072	.033	.028	.024	
6.0	.294	.234	.191	.253	.203	.166	.174	.142	.118	.101	.083	.070	.033	.027	.023	
7.0	.287	.227	.186	.247	.197	.162	.171	.138	.115	.099	.081	.068	.032	.027	.023	
8.0	.281	.222	.182	.242	.192	.158	.167	.135	.112	.097	.080	.067	.031	.026	.022	
9.0	.275	.217	.178	.236	.188	.156	.164	.132	.110	.095	.078	.066	.031	.026	.022	
10.0	.269	.213	.176	.232	.185	.153	.161	.130	.109	.094	.077	.065	.030	.025	.022	

C Range: 0 - 360DEG
 C Interval: 22.5DEG
 Test Speed: HIGH
 Temperature:25.1DEG
 Operators:Evan
 Test Date:2022-11-29

γ Range: 0 - 180DEG
 γ Interval: 1.0DEG
 Test System:EVERFINE GO-R5000_V2 SYSTEM V2.0.351
 Humidity:42%
 Test Distance:2.532m [K=1.0000]
 Remarks:

UGR(Unified Glare Rating) Table

Test:U:120.0V I:0.1051A P:12.27W PF:0.9729 Lamp Flux:570.103x1 lm										
NAME: LED luminaires					TYPE:N/A			WEIGHT:N/A		
SPEC.:ASD-LVF24M-2D12CC-BK 3000K					DIM.: N/A			SERIAL No.:N/A		
MFR.: ASD Lighting corp					SUR.:N/A			Shielding Angle:N/A		
ceiling/cavity	0.7	0.7	0.5	0.5	0.3	0.7	0.7	0.5	0.5	0.3
walls	0.5	0.3	0.5	0.3	0.3	0.5	0.3	0.5	0.3	0.3
working plane	0.2	0.2	0.2	0.2	0.2	0.2	0.2	0.2	0.2	0.2
Room dimensions	Viewed crosswise					Viewed endwise				
x = 2H y = 2H	15.1	16.4	15.6	16.9	17.4	16.9	18.2	17.4	18.7	19.3
3H	16.7	17.9	17.3	18.5	19.1	19.4	20.6	20.0	21.2	21.8
4H	17.4	18.6	18.0	19.1	19.8	20.8	21.9	21.4	22.5	23.1
6H	18.1	19.2	18.7	19.8	20.4	22.3	23.4	22.9	24.0	24.6
8H	18.4	19.5	19.0	20.1	20.7	23.2	24.2	23.8	24.8	25.5
12H	18.8	19.8	19.4	20.4	21.1	24.2	25.2	24.8	25.8	26.5
4H 2H	16.5	17.6	17.1	18.2	18.8	17.7	18.8	18.3	19.4	20.0
3H	18.6	19.6	19.2	20.2	20.9	20.5	21.5	21.1	22.1	22.8
4H	19.7	20.6	20.3	21.2	21.9	22.1	23.0	22.7	23.6	24.3
6H	20.7	21.5	21.3	22.1	22.9	23.8	24.6	24.4	25.2	26.0
8H	21.1	21.8	21.8	22.5	23.3	24.7	25.5	25.4	26.1	26.9
12H	21.5	22.2	22.2	22.9	23.7	25.8	26.5	26.5	27.2	28.0
8H 4H	20.9	21.6	21.5	22.3	23.1	22.6	23.4	23.3	24.1	24.8
6H	22.3	23.0	23.1	23.7	24.5	24.7	25.3	25.4	26.0	26.8
8H	23.1	23.7	23.8	24.4	25.2	25.8	26.4	26.6	27.1	28.0
12H	23.8	24.3	24.6	25.1	25.9	27.2	27.7	27.9	28.4	29.3
12H 4H	21.2	21.9	21.8	22.5	23.3	22.7	23.4	23.4	24.1	24.9
6H	22.9	23.5	23.6	24.2	25.0	24.9	25.5	25.6	26.2	27.0
8H	23.9	24.3	24.6	25.1	26.0	26.2	26.7	26.9	27.4	28.3
Variations with the observer position at spacings:										
S = 1.0H	+ 0.1 / - 0.1					+ 0.1 / - 0.1				
1.5H	+ 0.2 / - 0.3					+ 0.2 / - 0.3				
2.0H	+ 0.3 / - 0.5					+ 0.3 / - 0.4				

CIE Pub.117 Corrected 570.1 lm Total Lamp Luminous Flux.(8log(F/F0) = -2.0)

C Range: 0 - 360DEG
 C Interval: 22.5DEG
 Test Speed: HIGH
 Temperature:25.1DEG
 Operators:Evan
 Test Date:2022-11-29

γ Range: 0 - 180DEG
 γ Interval: 1.0DEG
 Test System:EVERFINE GO-R5000_V2 SYSTEM V2.0.351
 Humidity:42%
 Test Distance:2.532m [K=1.0000]
 Remarks:

UTILIZATION FACTORS TABLE

Test:U:120.0V I:0.1051A P:12.27W PF:0.9729 Lamp Flux:570.103x1 lm		
NAME: LED luminaires	TYPE:N/A	WEIGHT:N/A
SPEC.:ASD-LVF24M-2D12CC-BK 3000K	DIM.: N/A	SERIAL No.:N/A
MFR.: ASD Lighting corp	SUR.:N/A	Shielding Angle:N/A

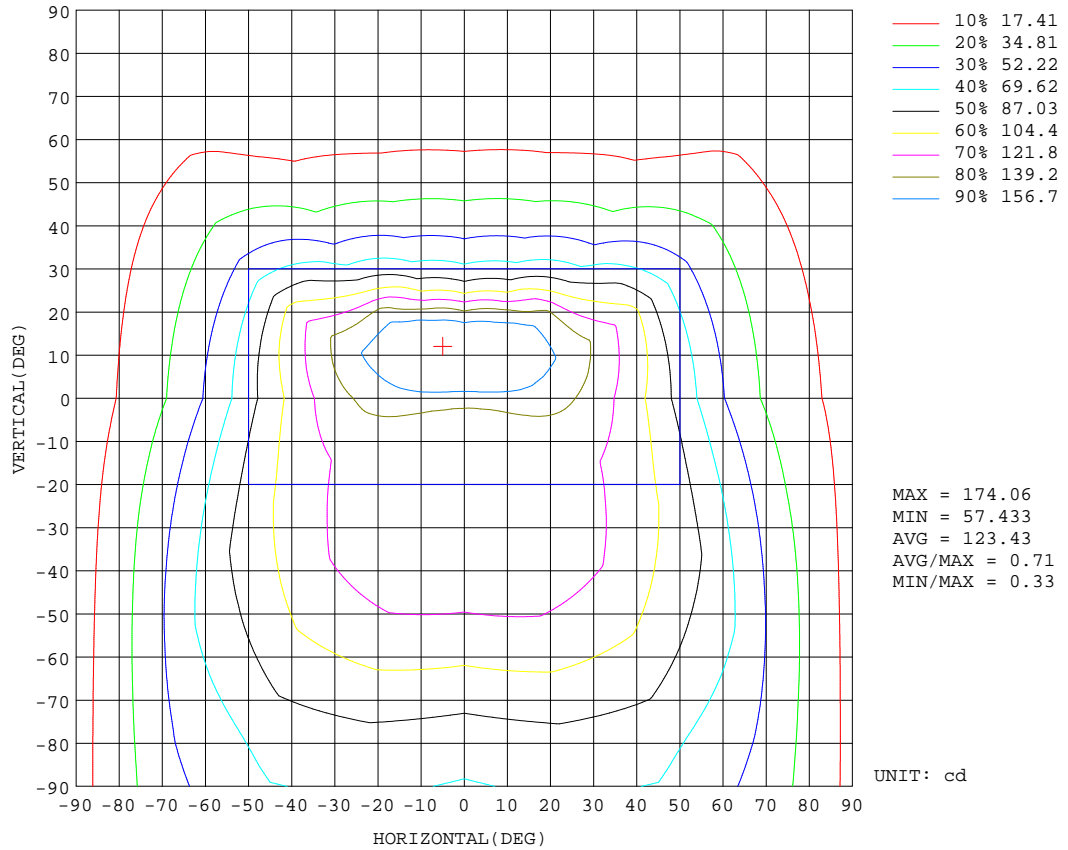
REFLECTANCE										
Ceiling	0.8	0.8	0.8	0.7	0.7	0.7	0.5	0.5	0.5	0
Walls	0.7	0.5	0.3	0.7	0.5	0.3	0.7	0.5	0.3	0
Working plane	0.2	0.2	0.2	0.2	0.2	0.2	0.2	0.2	0.2	0
ROOM INDEX	UTILIZATION FACTORS(PERCENT) $k(RI) \times RCR = 5$									
k = 0.60	50	38	31	49	38	31	47	37	31	24
0.80	59	47	39	58	46	39	55	45	38	30
1.00	67	55	47	65	54	46	61	54	45	36
1.25	74	62	54	71	60	53	67	58	51	42
1.50	79	67	59	76	66	58	71	62	56	46
2.00	86	75	67	83	73	66	77	69	63	51
2.50	90	80	73	86	78	71	80	73	67	55
3.00	93	85	78	90	82	76	83	77	71	58
4.00	98	90	84	94	87	82	87	81	77	62
5.00	101	94	89	97	91	86	89	84	80	65
ROOM INDEX	UF(total)									Direct
According to DIN EN 13032-2 2004			Suspended				SHRNOM = 1.25			

C Range: 0 - 360DEG
 C Interval: 22.5DEG
 Test Speed: HIGH
 Temperature:25.1DEG
 Operators:Evan
 Test Date:2022-11-29

γ Range: 0 - 180DEG
 γ Interval: 1.0DEG
 Test System:EVERFINE GO-R5000_V2 SYSTEM V2.0.351
 Humidity:42%
 Test Distance:2.532m [K=1.0000]
 Remarks:

ISOCANDELA DIAGRAM

Test:U:120.0V I:0.1051A P:12.27W PF:0.9729 Lamp Flux:570.103x1 lm		
NAME: LED luminaires	TYPE:N/A	WEIGHT:N/A
SPEC.:ASD-LVF24M-2D12CC-BK 3000K	DIM.: N/A	SERIAL No.:N/A
MFR.: ASD Lighting corp	SUR.:N/A	Shielding Angle:N/A

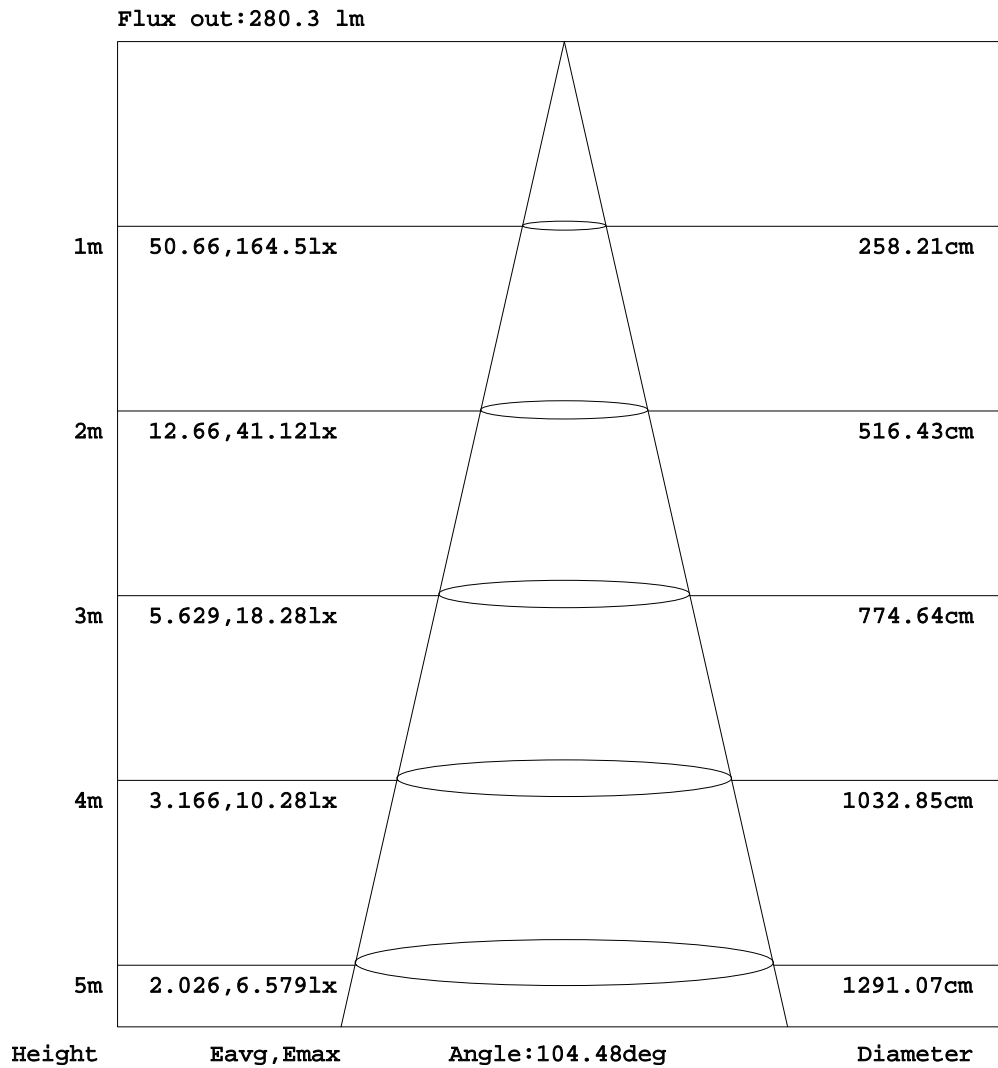


C Range: 0 - 360DEG
 C Interval: 22.5DEG
 Test Speed: HIGH
 Temperature:25.1DEG
 Operators:Evan
 Test Date:2022-11-29

γ Range: 0 - 180DEG
 γ Interval: 1.0DEG
 Test System:EVERFINE GO-R5000_V2 SYSTEM V2.0.351
 Humidity:42%
 Test Distance:2.532m [K=1.0000]
 Remarks:

AAI Figure

Test:U:120.0V I:0.1051A P:12.27W PF:0.9729 Lamp Flux:570.103x1 lm		
NAME: LED luminaires	TYPE:N/A	WEIGHT:N/A
SPEC.:ASD-LVF24M-2D12CC-BK 3000K	DIM.: N/A	SERIAL No.:N/A
MFR.: ASD Lighting corp	SUR.:N/A	Shielding Angle:N/A



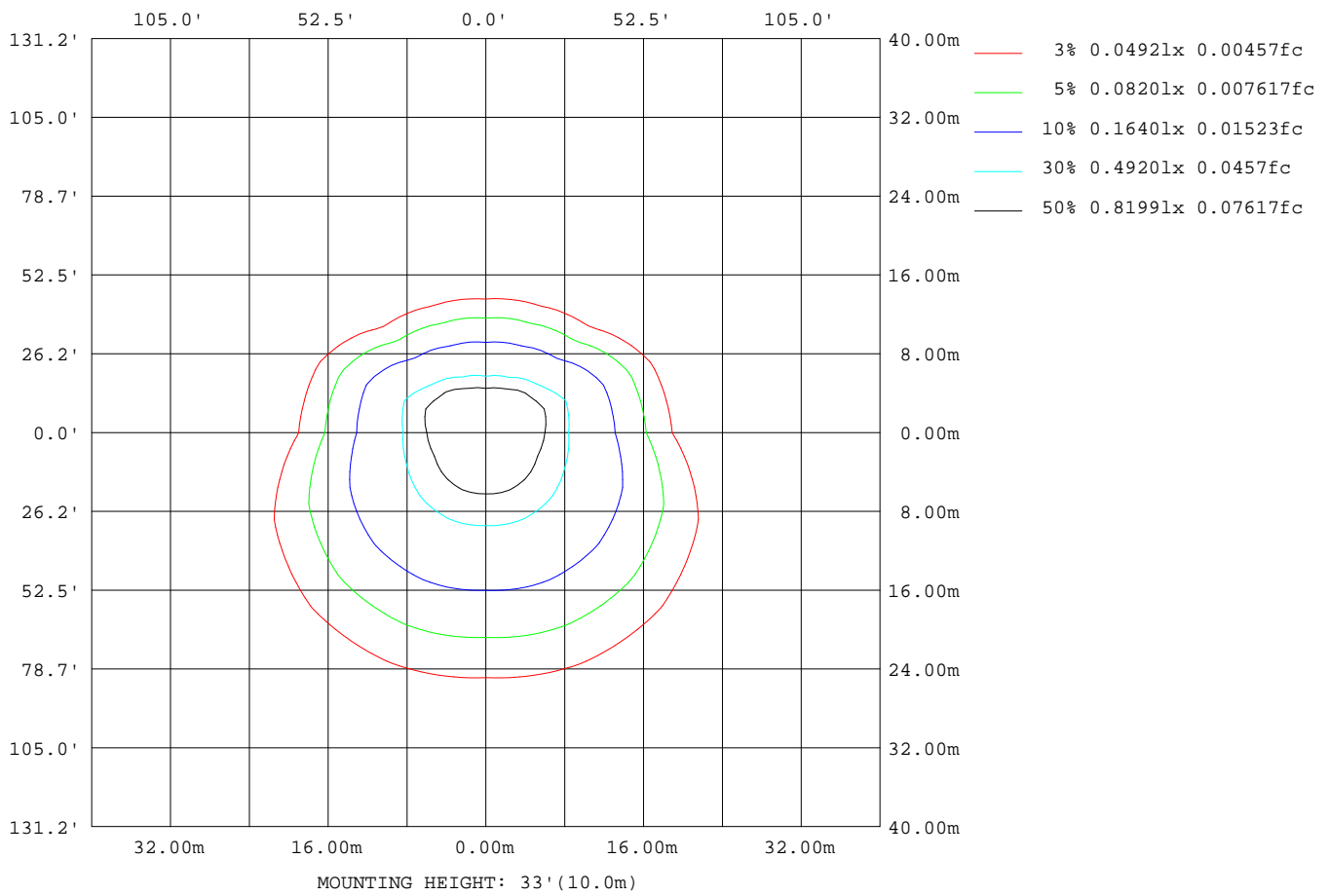
Note:The Curves indicate the illuminated area and the average illumination when the luminaire is at different distance.

C Range: 0 - 360DEG
 C Interval: 22.5DEG
 Test Speed: HIGH
 Temperature:25.1DEG
 Operators:Evan
 Test Date:2022-11-29

γ Range: 0 - 180DEG
 γ Interval: 1.0DEG
 Test System:EVERFINE GO-R5000_V2 SYSTEM V2.0.351
 Humidity:42%
 Test Distance:2.532m [K=1.0000]
 Remarks:

ISOLUX DIAGRAM

Test:U:120.0V I:0.1051A P:12.27W PF:0.9729 Lamp Flux:570.103x1 lm		
NAME: LED luminaires	TYPE:N/A	WEIGHT:N/A
SPEC.:ASD-LVF24M-2D12CC-BK 3000K	DIM.: N/A	SERIAL No.:N/A
MFR.: ASD Lighting corp	SUR.:N/A	Shielding Angle:N/A



C Range: 0 - 360DEG
 C Interval: 22.5DEG
 Test Speed: HIGH
 Temperature:25.1DEG
 Operators:Evan
 Test Date:2022-11-29

γ Range: 0 - 180DEG
 γ Interval: 1.0DEG
 Test System:EVERFINE GO-R5000_V2 SYSTEM V2.0.351
 Humidity:42%
 Test Distance:2.532m [K=1.0000]
 Remarks:

LED Avg.L Report

Test:U:120.0V I:0.1051A P:12.27W PF:0.9729 Lamp Flux:570.103x1 lm		
NAME: LED luminaires	TYPE:N/A	WEIGHT:N/A
SPEC.:ASD-LVF24M-2D12CC-BK 3000K	DIM.: N/A	SERIAL No.:N/A
MFR.: ASD Lighting corp	SUR.:N/A	Shielding Angle:N/A

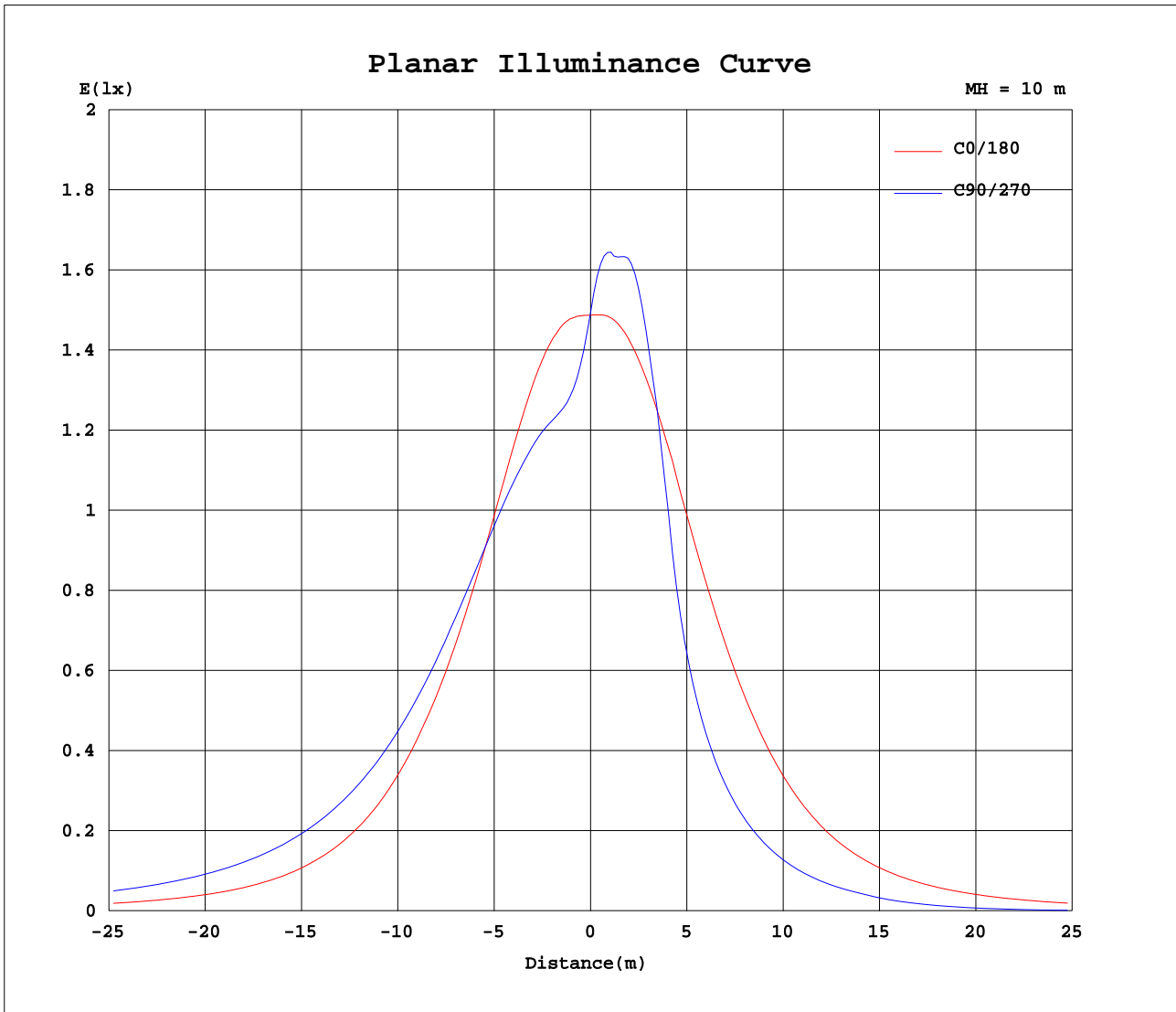
AvgL	cd/m2
L_0~180(65)av	1423
L_0~180(75)av	1372
L_0~180(85)av	2388
L_90~270(65)av	1775
L_90~270(75)av	2307
L_90~270(85)av	5895
L_45(65)av	1962
L_45(75)av	2407
L_45(85)av	6016

Standard: GB/T 29293-2012

C Range: 0 - 360DEG
 C Interval: 22.5DEG
 Test Speed: HIGH
 Temperature:25.1DEG
 Operators:Evan
 Test Date:2022-11-29

γ Range: 0 - 180DEG
 γ Interval: 1.0DEG
 Test System:EVERFINE GO-R5000_V2 SYSTEM V2.0.351
 Humidity:42%
 Test Distance:2.532m [K=1.0000]
 Remarks:

Planar Illuminance Curve



C Range: 0 - 360DEG
 C Interval: 22.5DEG
 Test Speed: HIGH
 Temperature: 25.1DEG
 Operators: Evan
 Test Date: 2022-11-29

γ Range: 0 - 180DEG
 γ Interval: 1.0DEG
 Test System: EVERFINE GO-R5000_V2 SYSTEM V2.0.351
 Humidity: 42%
 Test Distance: 2.532m [K=1.0000]
 Remarks:

LUMINOUS DISTRIBUTION INTENSITY DATA

Test:U:120.0V I:0.1051A P:12.27W PF:0.9729 Lamp Flux:570.103x1 lm		
NAME: LED luminaires	TYPE:N/A	WEIGHT:N/A
SPEC.:ASD-LVF24M-2D12CC-BK 3000K	DIM.: N/A	SERIAL No.:N/A
MFR.: ASD Lighting corp	SUR.:N/A	Shielding Angle:N/A

Table--1

UNIT: cd

C(DEG) γ (DEG)	0	22.5	45	67.5	90	112.5	135	157.5	180	202.5	225	247.5	270	292.5	315	337.5			
0	149	149	149	149	149	149	149	149	149	149	149	149	149	149	149	149			
5	150	141	136	133	132	133	136	142	151	159	165	166	166	165	164	159			
10	152	137	132	130	129	130	132	137	152	166	169	171	171	170	168	165			
15	151	134	132	132	131	132	132	134	151	167	174	172	167	170	171	165			
20	147	132	133	134	133	134	133	131	148	163	170	154	141	152	166	160			
25	141	129	134	135	134	135	133	128	141	158	154	116	99.2	114	150	154			
30	132	126	133	136	134	135	132	125	132	150	126	84.9	73.6	83.7	121	144			
35	122	121	131	135	133	134	130	120	122	136	93.7	65.0	57.2	64.3	90.5	131			
40	110	116	129	133	131	132	127	115	110	122	70.4	50.7	45.3	50.5	68.9	118			
45	96.2	111	125	130	127	129	123	109	95.7	106	53.4	39.9	36.0	39.9	52.9	101			
50	81.4	105	121	125	121	124	119	103	81.1	82.7	40.8	31.2	28.3	31.2	40.9	78.8			
55	66.7	97.9	115	119	115	118	114	96.3	66.8	63.8	31.1	23.9	21.3	24.0	31.3	61.3			
60	53.2	90.9	109	112	107	111	108	89.4	53.9	48.6	23.0	15.5	12.9	15.6	23.4	47.1			
65	42.0	83.5	102	105	99.6	104	101	82.2	42.7	36.9	14.9	7.78	5.98	7.93	15.2	36.2			
70	32.5	76.0	95.1	97.2	91.7	96.4	93.9	74.8	33.2	27.5	6.62	1.73	0.50	1.86	6.92	27.3			
75	24.9	68.5	87.7	89.4	84.0	88.9	86.7	67.6	25.1	18.8	0.43	0.07	0.08	0.08	0.63	18.8			
80	19.9	60.8	80.0	82.1	76.9	81.7	79.3	60.0	18.4	10.1	0.07	0.08	0.09	0.09	0.08	10.2			
85	15.9	53.4	73.9	77.0	72.2	76.8	73.6	53.0	13.4	7.72	0.09	0.10	0.11	0.11	0.10	7.65			
90	12.9	48.5	69.0	72.6	68.2	72.4	69.0	48.7	10.9	5.11	0.10	0.12	0.12	0.12	0.12	5.40			
95	12.6	44.3	64.3	68.4	64.4	68.3	64.4	44.6	10.9	3.21	0.11	0.13	0.13	0.14	0.13	3.27			
100	12.2	40.2	59.6	64.2	60.6	64.1	59.7	40.5	10.7	3.13	0.11	0.13	0.13	0.13	0.13	3.22			
105	11.6	36.3	55.2	60.0	57.2	60.0	55.3	36.7	10.3	2.69	0.10	0.12	0.12	0.12	0.12	2.82			
110	10.6	32.4	50.8	56.1	53.8	55.9	50.9	33.0	9.61	2.64	0.09	0.10	0.11	0.11	0.11	2.90			
115	9.48	28.6	46.3	51.9	50.2	51.8	46.4	29.3	9.09	2.53	0.08	0.09	0.09	0.09	0.09	2.93			
120	9.78	24.8	41.7	47.5	46.3	47.4	41.8	25.7	9.44	1.94	0.08	0.08	0.09	0.09	0.09	2.36			
125	9.88	21.0	37.1	42.9	42.2	42.8	37.1	21.9	9.54	1.51	0.08	0.08	0.09	0.09	0.09	1.88			
130	9.76	17.3	32.2	38.0	37.7	37.8	32.2	18.0	9.41	1.44	0.08	0.08	0.09	0.09	0.09	1.68			
135	9.53	13.7	27.2	32.8	32.8	32.6	27.2	14.4	9.15	1.64	0.08	0.08	0.09	0.09	0.09	1.68			
140	9.19	10.6	22.1	27.3	27.7	27.2	22.1	11.1	8.79	2.22	0.12	0.08	0.09	0.09	0.10	1.86			
145	8.79	8.21	17.0	21.8	22.3	21.7	17.0	8.36	8.38	2.91	0.32	0.09	0.09	0.09	0.15	2.00			
150	7.99	6.19	12.1	16.2	16.9	16.1	12.0	5.96	7.44	3.80	0.55	0.09	0.10	0.10	0.18	1.90			
155	6.32	4.89	7.34	10.7	11.4	10.6	7.30	4.57	5.82	4.37	0.92	0.19	0.11	0.12	0.22	1.65			
160	4.74	3.78	3.21	5.45	6.15	5.34	3.10	3.48	4.25	4.03	1.62	0.25	0.13	0.13	0.19	1.34			
165	3.22	2.65	1.75	1.09	1.44	0.99	1.49	2.38	2.75	2.79	1.64	0.34	0.14	0.15	0.17	0.76			
170	1.78	1.52	0.98	0.48	0.30	0.38	0.75	1.28	1.38	1.39	1.03	0.44	0.16	0.17	0.17	0.72			
175	0.25	0.52	0.41	0.27	0.27	0.27	0.33	0.44	0.19	0.19	0.19	0.19	0.19	0.20	0.21	0.21			
180	0.22	0.22	0.22	0.22	0.23	0.24	0.25	0.24	0.22	0.22	0.22	0.22	0.23	0.23	0.24	0.24			

C Range: 0 - 360DEG
 C Interval: 22.5DEG
 Test Speed: HIGH
 Temperature:25.1DEG
 Operators:Evan
 Test Date:2022-11-29

γ Range: 0 - 180DEG
 γ Interval: 1.0DEG
 Test System:EVERFINE GO-R5000_V2 SYSTEM V2.0.351
 Humidity:42%
 Test Distance:2.532m [K=1.0000]
 Remarks: