



LED OUTDOOR WALL SCONCE

► **DESIGN** - LED OUTDOOR WALL SCONCE has a modern, multipurpose design and a stylish look with efficient lighting. The clear seeded glass shade with a 180° beam angle filled with air bubbles emits a luxurious glow. It is designed to operate on 120V circuits and provides smooth triac dimming capabilities ranging from 10% to 100%.

► **COLOR SELECTABLE** - You can choose either a 3,000K warm white, 4,000K cool white or 5,000K daylight color temperature.

► **PHOTOCELL** - The built-in Dusk to Dawn Photocell will automatically turn the fixture on/off depending on the time of day.

► Durable waterproof housing resistant to rust and impact can be used outdoors in all weather conditions.

► **APPLICATION** - The fixture is rated for Wet Locations, making it perfect for indoor and outdoor projects such as decks, front doors, porches, patios, corridors, walkways, or any other common areas.

► **ADVANTAGES** - With a lifespan of 50,000 hours, these fixtures are made to last decades under normal operation! ASD provides a 5-year limited warranty along with ETL certification to guarantee top quality products and safety!

Catalog number	
Notes	
Type	



Finish: White Black

Model	Size	Watts	Voltage	Dimmable	Lumens	CCT	Finish	Dimensions (LxWxH)	Option
ASD-LWS26S-13D12CC-BK	13 inch	11.5W	120 V	TRIAC	498/566/520 lm	3CCT (3,000/4,000/5,000 K)	Black	4-3/4" x 2-1/2" x 13-3/4"	-
ASD-LWS26S-13D12CC-BK-2PACK	13 inch	11.5W	120 V	TRIAC	498/566/520 lm	3CCT (3,000/4,000/5,000 K)	Black	4-3/4" x 2-1/2" x 13-3/4"	-
ASD-LWS26S-18D12CC-WH-2PACK	18 inch	11.5W	120 V	TRIAC	428/495/455 lm	3CCT (3,000/4,000/5,000 K)	Black	4-3/4" x 2-1/2" x 17-15/16"	-
ASD-LWS26S-18D12CC-BK	18 inch	11.5W	120 V	TRIAC	428/495/455 lm	3CCT (3,000/4,000/5,000 K)	White	4-3/4" x 2-1/2" x 17-15/16"	-
ASD-LWS26S-18D12CC-BK-2PACK	18 inch	11.5W	120 V	TRIAC	428/495/455 lm	3CCT (3,000/4,000/5,000 K)	Black	4-3/4" x 2-1/2" x 17-15/16"	-
ASD-LWS26S-MV-24D20CC-BK	24 inch	20W	120-277 V	TRIAC	505/581/538 lm	3CCT (3,000/4,000/5,000 K)	Black	4-3/4" x 2-15/16" x 24"	-
LWS26S-PC WITH PHOTOCELL									
ASD-LWS26S-13N12CC-PC-BK	13 inch	11.5W	120 V	-	498/566/520 lm	3CCT (3,000/4,000/5,000 K)	Black	4-3/4" x 2-1/2" x 13-7/8"	Photocell
ASD-LWS26S-13N12CC-PC-BK-2PACK	13 inch	11.5W	120 V	-	498/566/520 lm	3CCT (3,000/4,000/5,000 K)	Black	4-3/4" x 2-1/2" x 13-7/8"	Photocell
ASD-LWS26S-18N12CC-PC-BK	18 inch	11.5W	120 V	-	428/495/455 lm	3CCT (3,000/4,000/5,000 K)	Black	4-3/4" x 2-1/2" x 18"	Photocell
ASD-LWS26S-18N12CC-PC-BK-2PACK	18 inch	11.5W	120 V	-	428/495/455 lm	3CCT (3,000/4,000/5,000 K)	Black	4-3/4" x 2-1/2" x 18"	Photocell

ORDERING INFORMATION

Model	UPC	Pcs. per carton	Carton size	Carton weight	GTIN 14
ASD-LWS26S-13D12CC-BK	810050734868	4	15.4" x 12.4" x 8.1"	18.5 lbs	30810050734869
ASD-LWS26S-13D12CC-BK-2PACK	810050737807	2	15.4" x 12.4" x 8.5"	17.5 lbs	10810050737804
ASD-LWS26S-18D12CC-WH-2PACK	810128112529	2	19.5" x 12.4" x 8.1"	22.5 lbs	10810128112526
ASD-LWS26S-18D12CC-BK	810050734875	4	19.5" x 12.4" x 8.1"	23.5 lbs	30810050734876
ASD-LWS26S-18D12CC-BK-2PACK	810050737814	2	19.5" x 12.4" x 8.1"	22.5 lbs	10810050737811
ASD-LWS26S-MV-24D20CC-BK	810128112598	2	25.6" x 6.5" x 8.1"	15.2 lbs	10810128112595
LWS26S-PC WITH PHOTOCELL					
ASD-LWS26S-13N12CC-PC-BK	810050736763	4	15.4" x 12.4" x 8.1"	18.3 lbs	30810050736764
ASD-LWS26S-13N12CC-PC-BK-2PACK	810128114530	2	15.4" x 12.4" x 8.1"	18 lbs	10810128114537
ASD-LWS26S-18N12CC-PC-BK	810128110198	4	19.5" x 12.4" x 8.1"	21.8 lbs	10810128110195
ASD-LWS26S-18N12CC-PC-BK-2PACK	810128114547	2	19.5" x 12.4" x 8.1"	23.1 lbs	10810128114544

For most up-to-date spec sheets please refer to asd-lighting.com

ASD LIGHTING CORP

E-mail: orders@asd-lighting.com | Web site: www.asd-lighting.com





LED OUTDOOR WALL SCONCE

PRODUCT SPECIFICATIONS:

Construction & Materials			Dimming range					
Housing	Aluminum		10-100%					
Lens	Clear seeded glass		Dimming compatible controls					
Finish	White, Black		Brand	Lutron				
Weight	ASD-LWS26S-13D12CC-BK	3.8 lbs (1.7 kg)	Models	MACL-153MLH-WH	DVCL-153PR	Leviton	R02-DW6HD-2RW	DSL06
	ASD-LWS26S-13D12CC-BK-2PACK	7.6 lbs (3.4 kg)		STCL-153PH-WH	P-PKG1W	R00-RNL06-0TW		
	ASD-LWS26S-18D12CC-WH-2PACK	9.5 lbs (4.3 kg)		PD-6WCL-WH-R		R68-06674-POT		
	ASD-LWS26S-18D12CC-BK	4.7 lbs (2.1 kg)						
	ASD-LWS26S-18D12CC-BK-2PACK	9.5 lbs (4.3 kg)	Regular and voluntary certifications					
	ASD-LWS26S-MV-24D20CC-BK	6.7 lbs (3 kg)	5-year limited warranty		cETLus certified 4001256			
	ASD-LWS26S-13N12CC-PC-BK	4.6 lbs (2.1 kg)						
	ASD-LWS26S-13N12CC-PC-BK-2PACK	9.3 lbs (4.2 kg)						
	ASD-LWS26S-18N12CC-PC-BK	4.9 lbs (2.2 kg)						
ASD-LWS26S-18N12CC-PC-BK-2PACK	9.7 lbs (4.4 kg)							
Environmental system								
Work environment	Suitable for Wet Locations							
Operating temperature	-40°F to 113°F (-40°C to 45°C)							
	for PC models: -4°F to 113°F (-20°C to 45°C)							
L-70 Life	> 50,000 hrs							
Optical system								
Luminous flux	for 13 inch models: 498/566/520 lm							
	for 18 inch models: 428/495/455 lm							
	for 24 inch model: 505/581/538 lm							
Color temperature	3CCT switch (3,000/4,000/5,000 K), 3,000 K by default							
CRI	> 80							
Electrical system								
Input voltage	120 V	for 24 inch model: 120-277 V						
Max input current	0.16 A	for 24 inch model: 0.18 A						
Inrush current (Action time)	0.1 A (0.1 S)	for 24 inch model: 0.17 A (0.1 S)						
Off state power	0W							
Power consumption	11.5W	for 24 inch model: 20W						
Power factor	> 0.9							
Output voltage	36 V	for 24 inch model: 18-40 V						
Max output current	0.3 A	for 24 inch model: 0.52 A						
Surge protection DM/CM	1.25 kV / 1.25 kV	for PC models: 2.5 kV / 2.5 kV						

PACKAGE CONTENTS:	
Description	Q-ty
LED Outdoor Wall Sconce	1 (2 for 2pack)
Mounting plate (A)	1
Wire nut (B)	3
Mounting screw (C)	2
Back plate screw (D)	2
Black screw (E)	2
Photocell cap (F) only for PC models	1
Box	1

A

B

E

C

D

F

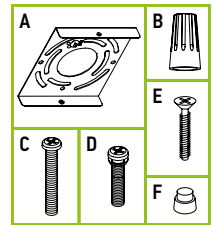
BUILT-IN PHOTOCCELL INFORMATION

Specifications	Input power	Light level to turn ON	Light level to turn OFF	Operating temperature
Model: MD,EP-120R	120 Vac, 60 Hz	30 ~ 150 lux (2.8 -14 fc)	200 ~ 800 lux (18.6-74.4 fc)	-4°F to 113°F (-20°C to 45°C)

The dusk-to-dawn sensor automatically turns the fixture off during daylight hours.

PACKAGE CONTENTS:

Description	Q-ty
LED Outdoor Wall Sconce	1 (2 for 2pack)
Mounting plate (A)	1
Wire nut (B)	3
Mounting screw (C)	2
Back plate screw (D)	2
Black screw (E)	2
Photocell cap (F) only for PC models	1
Box	1



BUILT-IN PHOTOCELL INFORMATION

Specifications	Input power	Light level to turn ON	Light level to turn OFF	Operating temperature
Model: MD.EP-120R	120 Vac, 60 Hz	30 ~ 150 lux (2.8 ~ 14 fc)	200 ~ 800 lux (18.6-74.4 fc)	-4°F to 113°F (-20°C to 45°C)

The dusk-to-dawn sensor automatically turns the fixture off during daylight hours.

For most up-to-date spec sheets please refer to asd-lighting.com

ASD LIGHTING CORP

E-mail: orders@asd-lighting.com | Web site: www.asd-lighting.com





LED OUTDOOR WALL SCONCE

INSTALLATION GUIDE

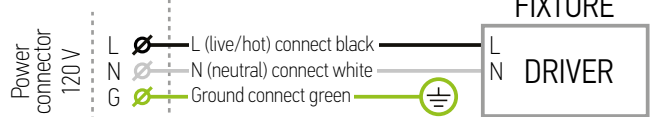
IMPORTANT SAFETY INFORMATION:

Please read all the instructions below before installation.

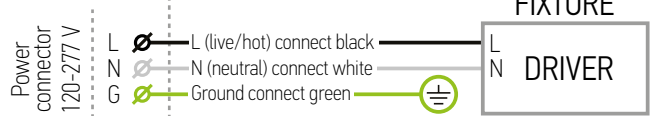
- ▶ Make sure that the supply voltage corresponds to the rated product voltage.
- ▶ The product must be installed by a qualified electrician in accordance with the National Electrical Code and corresponding local codes.
- ▶ If the product is damaged, do not use it.

ELECTRICAL SCHEMATIC DIAGRAM:

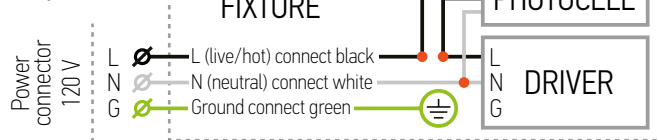
LWS26S



LWS26S-MV



LWS26S-PC with photocell



⚠ WARNING

RISK OF PERSONAL INJURY – READ and follow all WARNINGS and installation instructions. Keep or give to the owner for future reference.

Risk of cuts: Wear gloves to prevent cuts or abrasions when removing from carton, handling, installing, and maintaining this product.

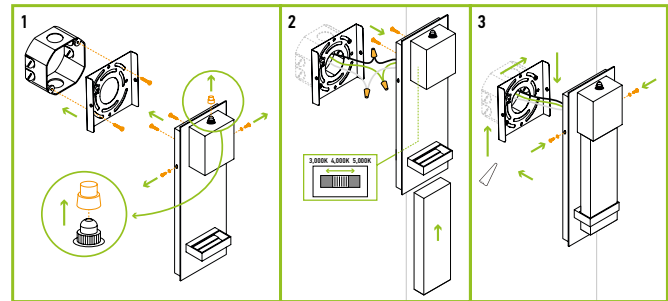
Risk of electric shock: This product must be installed in accordance with the applicable installation code by a person familiar with the construction and operation of the product and the hazards involved.

Risk of Fire: Minimum 194°F supply conductors. Consult a qualified electrician to ensure correct branch circuit conductor.

ASD® assumes no responsibility for claims arising out of improper or careless Installation or handling of this product.

INSTALLATION STEPS:

1. Remove the mounting plate by unscrewing the black screws from both sides of the fixture. Unscrew the two screws from the back plate of the fixture. Attach the mounting plate to the outlet box using two mounting screws. In models with photocell option remove the photocell cap to make the dusk-to-dawn sensor operate.
2. Slide the glass through the bracket at the base of the fixture until fully inserted. Attach the glass by using two screws on the back plate of the fixture. Choose needed color temperature by adjusting switch position. Connect the wires: Black to Black, White to White, Ground to Ground. Secure the connection with wire nuts.
3. Attach the fixture to the mounting plate using two black screws on both sides. Before tightening the screws, align the holes of both the fixture and the mounting plate to ensure a solid fit. For outdoor locations please use silicone (not included) shown in the picture below.



For most up-to-date spec sheets please refer to asd-lighting.com

ASD LIGHTING CORP

E-mail: orders@asd-lighting.com | Web site: www.asd-lighting.com

