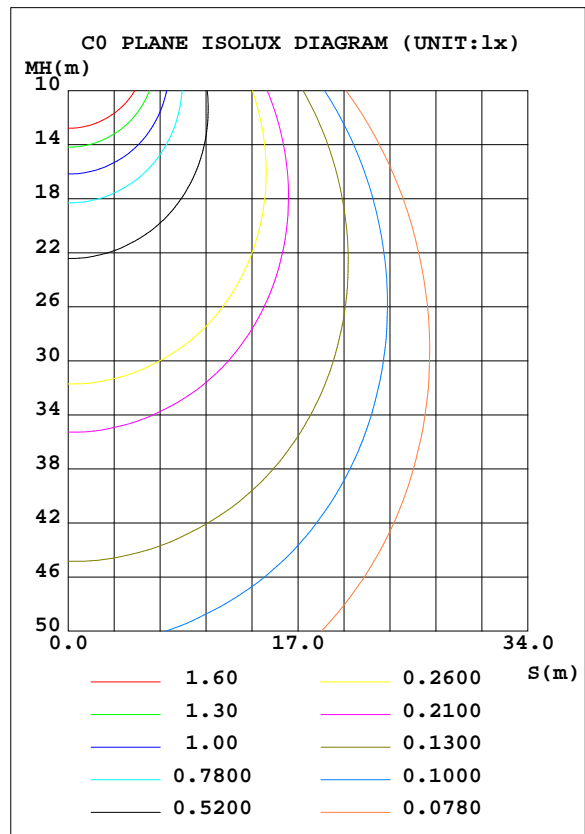
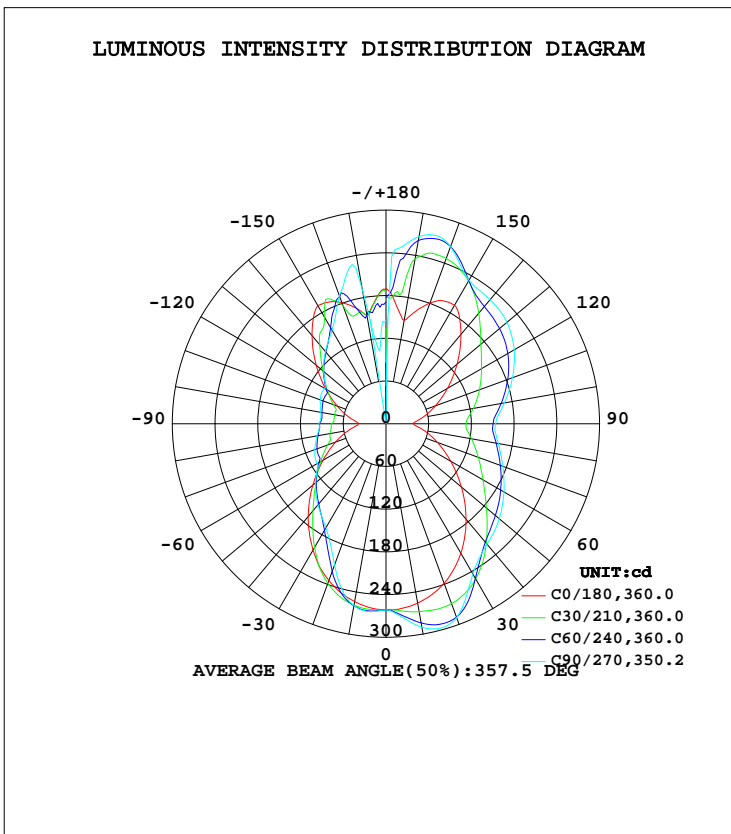


LUMINAIRE PHOTOMETRIC TEST REPORT

| | | |
|--|----------|------------------|
| Test:U:120.0V I:0.2402A P:28.48W PF:0.9881 Freq:60.00Hz Lamp Flux:1855.67x1 lm | | |
| NAME:ASD-LWS27C-36D30CCBK | TYPE:LED | WEIGHT: |
| SPEC.:5000K | DIM.: | SERIAL No.: |
| MFR.: ASD Lighting Corp | SUR.: | Shielding Angle: |

| DATA OF LAMP | | PHOTOMETRIC DATA | | | |
|------------------|-------------------|------------------|---------|--------------------|-----------|
| MODEL | LWS27C-36D30CC-BK | Imax(cd) | 297.0 | S/MH(C0/180) | 1.18 |
| NOMINAL POWER(W) | 30 | LOR(%) | 100.0 | S/MH(C90/270) | 0.98 |
| RATED VOLTAGE(V) | 120-277 | TOTAL FLUX(lm) | 1855.7 | η UP, DN(C0-180) | 29.5,30.0 |
| NOMINAL FLUX(lm) | 1855.67 | CIE CLASS | DIFFUSE | η UP, DN(C180-360) | 18.9,21.6 |
| LAMPS INSIDE | 1 | η up(%) | 48.4 | CIBSE SHR NOM | 1.25 |
| TEST VOLTAGE(V) | 120 | η down(%) | 51.6 | CIBSE SHR MAX | 1.35 |



C Range: 0 - 360DEG
 C Interval: 15.0DEG
 Test Speed: HIGH
 Temperature: 25.3DEG
 Operators: Alan Wang
 Test Date: 17 October 2023

γ Range: 0 - 180DEG
 γ Interval: 1.0DEG
 Test System: EVERFINE GO-R5000_V2 SYSTEM V2.00.416
 Humidity: 43.6%
 Test Distance: 2.500m [K=1.0393]
 Remarks:

ZONAL FLUX DIAGRAM

ZONAL FLUX DIAGRAM:

| γ | C0 | C45 | C90 | C135 | C180 | C225 | C270 | C315 | γ | Φ zone | Φ total | %lum,lamp |
|----------|-----------------------|-------|-------|-------|-------|-------|-------|-------|----------|-------------|--------------|-----------|
| 10 | 255.9 | 276.7 | 289.9 | 277.2 | 253.6 | 260.1 | 259.4 | 261.6 | 0- 10 | 25.36 | 25.36 | 1.37,1.37 |
| 20 | 238.7 | 282.6 | 289.9 | 281.1 | 234.4 | 231.1 | 211.1 | 234.9 | 10- 20 | 73.90 | 99.26 | 5.35,5.35 |
| 30 | 210.2 | 258.0 | 244.0 | 255.0 | 205.0 | 183.3 | 168.9 | 187.3 | 20- 30 | 107.8 | 207.1 | 11.2,11.2 |
| 40 | 175.1 | 217.9 | 220.8 | 214.7 | 170.0 | 149.2 | 148.6 | 153.0 | 30- 40 | 124.8 | 331.9 | 17.9,17.9 |
| 50 | 138.2 | 191.8 | 207.6 | 190.6 | 134.1 | 127.0 | 129.0 | 130.8 | 40- 50 | 132.4 | 464.3 | 25,25 |
| 60 | 105.0 | 174.6 | 191.4 | 175.0 | 102.2 | 108.3 | 111.6 | 111.0 | 50- 60 | 132.3 | 596.7 | 32.2,32.2 |
| 70 | 77.07 | 159.9 | 174.7 | 160.7 | 75.44 | 96.26 | 106.4 | 98.37 | 60- 70 | 127.7 | 724.4 | 39,39 |
| 80 | 54.04 | 146.0 | 160.2 | 147.7 | 53.28 | 92.32 | 98.54 | 92.69 | 70- 80 | 120.9 | 845.2 | 45.5,45.5 |
| 90 | 38.76 | 138.7 | 154.1 | 141.2 | 39.11 | 89.26 | 94.17 | 89.31 | 80- 90 | 112.6 | 957.9 | 51.6,51.6 |
| 100 | 52.53 | 151.2 | 168.7 | 154.4 | 52.56 | 86.11 | 92.98 | 85.06 | 90-100 | 112.3 | 1070 | 57.7,57.7 |
| 110 | 73.96 | 167.0 | 188.9 | 171.0 | 72.88 | 86.39 | 98.09 | 85.90 | 100-110 | 119.8 | 1190 | 64.1,64.1 |
| 120 | 99.93 | 180.2 | 207.9 | 185.1 | 97.79 | 96.74 | 99.37 | 95.03 | 110-120 | 125.4 | 1315 | 70.9,70.9 |
| 130 | 130.3 | 191.3 | 221.7 | 196.2 | 127.9 | 113.0 | 114.2 | 113.3 | 120-130 | 127.6 | 1443 | 77.8,77.8 |
| 140 | 163.9 | 205.7 | 227.4 | 209.1 | 161.7 | 132.8 | 132.4 | 133.5 | 130-140 | 124.7 | 1568 | 84.5,84.5 |
| 150 | 192.4 | 235.8 | 233.2 | 237.4 | 191.6 | 166.1 | 151.9 | 164.6 | 140-150 | 114.9 | 1682 | 90.7,90.7 |
| 160 | 180.4 | 260.3 | 264.9 | 257.1 | 181.1 | 185.3 | 191.6 | 201.9 | 150-160 | 95.64 | 1778 | 95.8,95.8 |
| 170 | 147.5 | 246.8 | 267.0 | 188.3 | 154.3 | 157.0 | 191.7 | 207.7 | 160-170 | 60.14 | 1838 | 99.1,99.1 |
| 180 | 190.0 | 171.5 | 54.27 | 172.5 | 188.7 | 179.4 | 144.7 | 150.4 | 170-180 | 17.43 | 1856 | 100,100 |
| DEG | LUMINOUS INTENSITY:cd | | | | | | | | | UNIT:lm | | |

Conical surface Flux(90deg): 397.67 lm

%lum = 21.4%

%lamp = 21.4%

Conical surface Flux(120deg): 596.67 lm

%lum = 32.2%

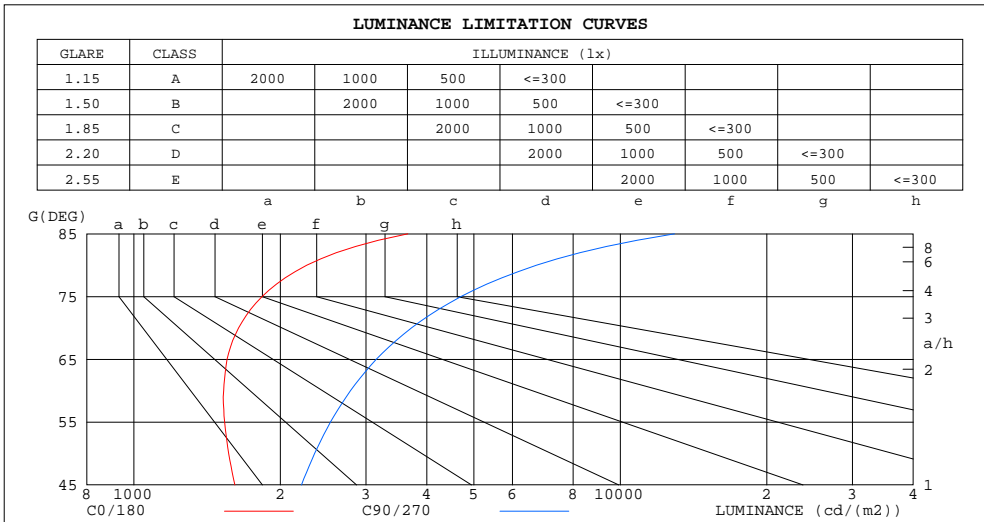
%lamp = 32.2%

C Range: 0 - 360DEG
 C Interval: 15.0DEG
 Test Speed: HIGH
 Temperature: 25.3DEG
 Operators: Alan Wang
 Test Date: 17 October 2023

γ Range: 0 - 180DEG
 γ Interval: 1.0DEG
 Test System: EVERFINE GO-R5000_V2 SYSTEM V2.00.416
 Humidity: 43.6%
 Test Distance: 2.500m [K=1.0393]
 Remarks:

LUMINANCE LIMITATION CURVES

| | | |
|--|----------|------------------|
| Test:U:120.0V I:0.2402A P:28.48W PF:0.9881 Freq:60.00Hz Lamp Flux:1855.67x1 lm | | |
| NAME: | TYPE:LED | WEIGHT: |
| SPEC.:ASD-LWS27C-36D30CCBK_5000K | DIM.: | SERIAL No.: |
| MFR.: ASD Lighting Corp | SUR.: | Shielding Angle: |



| LUMINANCE cd/(m2) | | |
|-------------------|--------|---------|
| G(DEG) | C0/180 | C90/270 |
| 85 | 3655 | 12918 |
| 80 | 2267 | 6721 |
| 75 | 1834 | 4702 |
| 70 | 1642 | 3721 |
| 65 | 1555 | 3150 |
| 60 | 1530 | 2789 |
| 55 | 1537 | 2536 |
| 50 | 1566 | 2353 |
| 45 | 1613 | 2210 |

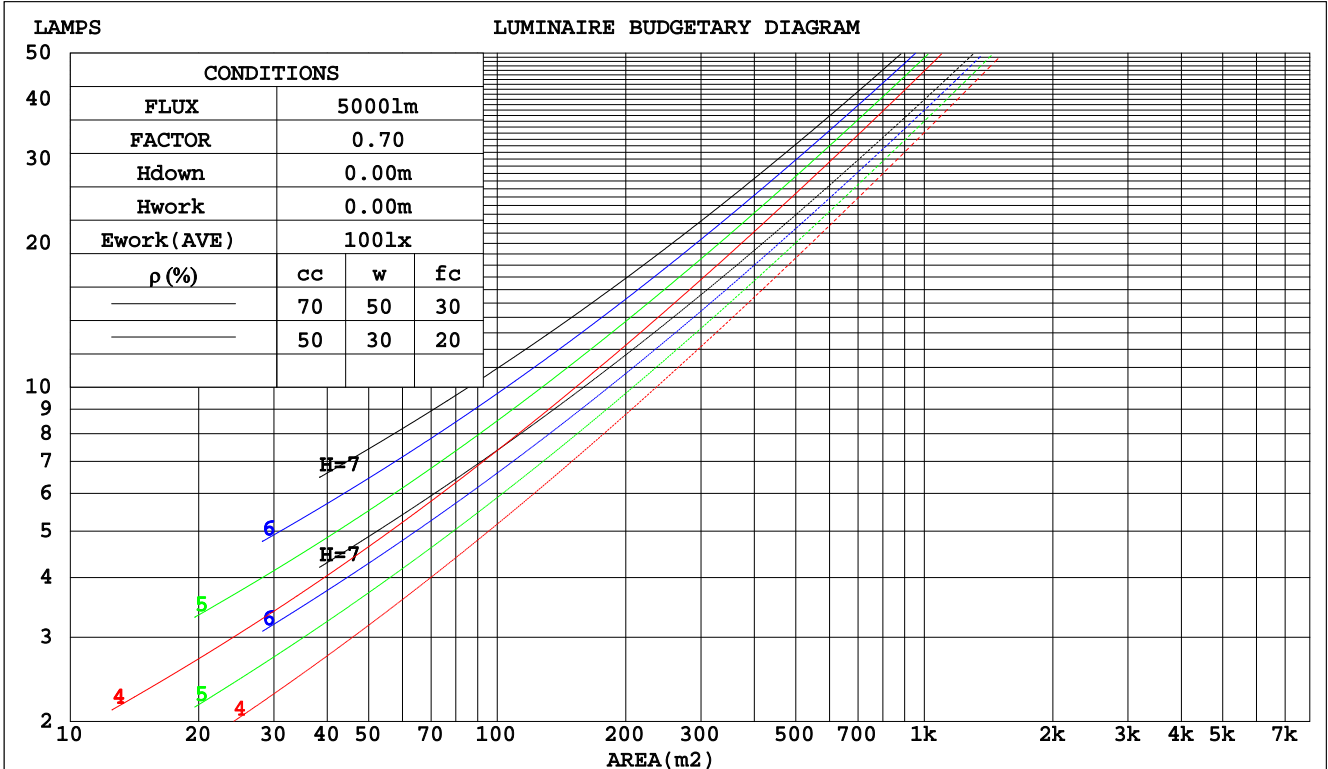
C Range: 0 - 360DEG
 C Interval: 15.0DEG
 Test Speed: HIGH
 Temperature: 25.3DEG
 Operators: Alan Wang
 Test Date: 17 October 2023

γ Range: 0 - 180DEG
 γ Interval: 1.0DEG
 Test System: EVERFINE GO-R5000_V2 SYSTEM V2.00.416
 Humidity: 43.6%
 Test Distance: 2.500m [K=1.0393]
 Remarks:

CU AND LUMINAIRE BUDGETARY ESTIMATE DIAGRAM

| | | |
|--|----------|------------------|
| Test:U:120.0V I:0.2402A P:28.48W PF:0.9881 Freq:60.00Hz Lamp Flux:1855.67x1 lm | | |
| NAME: | TYPE:LED | WEIGHT: |
| SPEC.:ASD-LWS27C-36D30CCBK_5000K | DIM.: | SERIAL No.: |
| MFR.: ASD Lighting Corp | SUR.: | Shielding Angle: |

| pcc | 80% | | | 70% | | | 50% | | | 30% | | | 10% | | | 0 |
|------|-----------------------|------|------|-----|-----|-----|---------------------------------|-----|-----|-----|-----|-----|-----|-----|-----|-----|
| | 50% | 30% | 10% | 50% | 30% | 10% | 50% | 30% | 10% | 50% | 30% | 10% | 50% | 30% | 10% | 0 |
| pw | | | | | | | | | | | | | | | | |
| pfc | 20% | | | 20% | | | 20% | | | 20% | | | 20% | | | 0 |
| RCR | RCR:Room Cavity Ratio | | | | | | Coefficients of Utilization(CU) | | | | | | | | | |
| 0.0 | 1.08 | 1.08 | 1.08 | .99 | .99 | .99 | .84 | .84 | .84 | .70 | .70 | .70 | .58 | .58 | .58 | .52 |
| 1.0 | .90 | .85 | .81 | .83 | .79 | .75 | .70 | .67 | .64 | .58 | .55 | .53 | .47 | .45 | .43 | .38 |
| 2.0 | .77 | .70 | .64 | .71 | .65 | .60 | .60 | .55 | .51 | .50 | .46 | .43 | .40 | .37 | .35 | .30 |
| 3.0 | .67 | .59 | .53 | .62 | .55 | .49 | .52 | .47 | .42 | .43 | .39 | .35 | .35 | .32 | .29 | .25 |
| 4.0 | .59 | .51 | .44 | .55 | .47 | .41 | .46 | .40 | .35 | .38 | .34 | .30 | .31 | .27 | .24 | .21 |
| 5.0 | .53 | .44 | .37 | .49 | .41 | .35 | .41 | .35 | .30 | .34 | .29 | .26 | .28 | .24 | .21 | .18 |
| 6.0 | .47 | .38 | .32 | .44 | .36 | .30 | .37 | .31 | .26 | .31 | .26 | .22 | .25 | .21 | .18 | .15 |
| 7.0 | .42 | .34 | .28 | .39 | .32 | .26 | .33 | .27 | .23 | .28 | .23 | .20 | .23 | .19 | .16 | .14 |
| 8.0 | .38 | .30 | .25 | .36 | .28 | .23 | .30 | .25 | .20 | .26 | .21 | .17 | .21 | .17 | .14 | .12 |
| 9.0 | .35 | .27 | .22 | .33 | .26 | .21 | .28 | .22 | .18 | .23 | .19 | .16 | .19 | .16 | .13 | .11 |
| 10.0 | .32 | .25 | .20 | .30 | .23 | .19 | .26 | .20 | .16 | .22 | .17 | .14 | .18 | .14 | .12 | .10 |



C Range: 0 - 360DEG
 C Interval: 15.0DEG
 Test Speed: HIGH
 Temperature: 25.3DEG
 Operators: Alan Wang
 Test Date: 17 October 2023

γ Range: 0 - 180DEG
 γ Interval: 1.0DEG
 Test System: EVERFINE GO-R5000_V2 SYSTEM V2.00.416
 Humidity: 43.6%
 Test Distance: 2.500m [K=1.0393]
 Remarks:

WEC AND CCEC

| | | |
|--|----------|------------------|
| Test:U:120.0V I:0.2402A P:28.48W PF:0.9881 Freq:60.00Hz Lamp Flux:1855.67x1 lm | | |
| NAME: | TYPE:LED | WEIGHT: |
| SPEC.:ASD-LWS27C-36D30CCBK_5000K | DIM.: | SERIAL No.: |
| MFR.: ASD Lighting Corp | SUR.: | Shielding Angle: |

| ρcc | 80% | | | 70% | | | 50% | | | 30% | | | 10% | | | 0 |
|------|-----------------------|------|------|------|------|------|---------------------------------|------|------|------|------|------|------|------|------|---|
| ρw | 50% | 30% | 10% | 50% | 30% | 10% | 50% | 30% | 10% | 50% | 30% | 10% | 50% | 30% | 10% | 0 |
| ρfc | 20% | | | 20% | | | 20% | | | 20% | | | 20% | | | 0 |
| RCR | RCR:Room Cavity Ratio | | | | | | Wall Exitance Coefficients(WEC) | | | | | | | | | |
| 0.0 | | | | | | | | | | | | | | | | |
| 1.0 | .353 | .201 | .064 | .331 | .189 | .060 | .290 | .166 | .053 | .253 | .146 | .047 | .218 | .126 | .041 | |
| 2.0 | .305 | .167 | .051 | .285 | .157 | .048 | .248 | .138 | .043 | .214 | .120 | .037 | .182 | .103 | .032 | |
| 3.0 | .272 | .144 | .043 | .253 | .136 | .041 | .219 | .119 | .036 | .188 | .103 | .032 | .159 | .088 | .027 | |
| 4.0 | .245 | .127 | .037 | .229 | .120 | .035 | .197 | .105 | .031 | .168 | .090 | .027 | .141 | .077 | .023 | |
| 5.0 | .224 | .114 | .033 | .208 | .107 | .031 | .180 | .094 | .028 | .153 | .081 | .024 | .128 | .068 | .021 | |
| 6.0 | .206 | .103 | .029 | .192 | .097 | .028 | .165 | .085 | .025 | .140 | .073 | .021 | .117 | .062 | .018 | |
| 7.0 | .190 | .094 | .027 | .177 | .088 | .025 | .153 | .077 | .022 | .130 | .066 | .019 | .108 | .056 | .016 | |
| 8.0 | .177 | .086 | .024 | .165 | .081 | .023 | .142 | .071 | .020 | .120 | .061 | .018 | .100 | .052 | .015 | |
| 9.0 | .165 | .080 | .022 | .154 | .075 | .021 | .133 | .066 | .019 | .113 | .056 | .016 | .094 | .048 | .014 | |
| 10.0 | .155 | .074 | .021 | .144 | .070 | .019 | .124 | .061 | .017 | .106 | .052 | .015 | .088 | .044 | .013 | |

| ρcc | 80% | | | 70% | | | 50% | | | 30% | | | 10% | | | 0 |
|------|-----------------------|------|------|------|------|------|--|------|------|------|------|------|------|------|------|---|
| ρw | 50% | 30% | 10% | 50% | 30% | 10% | 50% | 30% | 10% | 50% | 30% | 10% | 50% | 30% | 10% | 0 |
| ρfc | 20% | | | 20% | | | 20% | | | 20% | | | 20% | | | 0 |
| RCR | RCR:Room Cavity Ratio | | | | | | Ceiling Cavity Exitance Coefficients(CCEC) | | | | | | | | | |
| 0.0 | .559 | .559 | .559 | .478 | .478 | .478 | .326 | .326 | .326 | .187 | .187 | .187 | .060 | .060 | .060 | |
| 1.0 | .555 | .527 | .503 | .475 | .453 | .433 | .325 | .311 | .299 | .187 | .180 | .174 | .060 | .058 | .056 | |
| 2.0 | .548 | .506 | .471 | .469 | .436 | .407 | .322 | .301 | .284 | .186 | .175 | .166 | .060 | .057 | .054 | |
| 3.0 | .541 | .490 | .450 | .464 | .423 | .390 | .318 | .294 | .274 | .184 | .172 | .161 | .059 | .056 | .053 | |
| 4.0 | .534 | .479 | .437 | .458 | .414 | .379 | .315 | .288 | .267 | .182 | .169 | .158 | .059 | .055 | .052 | |
| 5.0 | .527 | .469 | .427 | .452 | .406 | .372 | .312 | .284 | .263 | .180 | .167 | .156 | .058 | .054 | .051 | |
| 6.0 | .520 | .462 | .421 | .447 | .400 | .366 | .308 | .280 | .259 | .179 | .165 | .154 | .058 | .054 | .051 | |
| 7.0 | .513 | .456 | .416 | .442 | .395 | .362 | .305 | .277 | .257 | .177 | .163 | .153 | .057 | .053 | .051 | |
| 8.0 | .507 | .451 | .412 | .437 | .391 | .359 | .302 | .274 | .255 | .176 | .162 | .152 | .057 | .053 | .050 | |
| 9.0 | .501 | .446 | .409 | .432 | .387 | .357 | .299 | .272 | .253 | .174 | .161 | .151 | .056 | .053 | .050 | |
| 10.0 | .496 | .442 | .407 | .428 | .384 | .355 | .297 | .270 | .252 | .173 | .160 | .150 | .056 | .052 | .050 | |

C Range: 0 - 360DEG
 C Interval: 15.0DEG
 Test Speed: HIGH
 Temperature: 25.3DEG
 Operators: Alan Wang
 Test Date: 17 October 2023

γ Range: 0 - 180DEG
 γ Interval: 1.0DEG
 Test System: EVERFINE GO-R5000_V2 SYSTEM V2.00.416
 Humidity: 43.6%
 Test Distance: 2.500m [K=1.0393]
 Remarks:

UGR(Unified Glare Rating) Table

| | | | | | | | | | | |
|--|------------------|------|------|------|----------|----------------|------|------------------|------|------|
| Test:U:120.0V I:0.2402A P:28.48W PF:0.9881 Freq:60.00Hz Lamp Flux:1855.67x1 lm | | | | | | | | | | |
| NAME: | | | | | TYPE:LED | | | WEIGHT: | | |
| SPEC.:ASD-LWS27C-36D30CCBK_5000K | | | | | DIM.: | | | SERIAL No.: | | |
| MFR.: ASD Lighting Corp | | | | | SUR.: | | | Shielding Angle: | | |
| ceiling/cavity | 0.7 | 0.7 | 0.5 | 0.5 | 0.3 | 0.7 | 0.7 | 0.5 | 0.5 | 0.3 |
| walls | 0.5 | 0.3 | 0.5 | 0.3 | 0.3 | 0.5 | 0.3 | 0.5 | 0.3 | 0.3 |
| working plane | 0.2 | 0.2 | 0.2 | 0.2 | 0.2 | 0.2 | 0.2 | 0.2 | 0.2 | 0.2 |
| Room dimensions | Viewed crosswise | | | | | Viewed endwise | | | | |
| x = 2H y = 2H | 11.8 | 12.8 | 12.6 | 13.7 | 14.8 | 13.7 | 14.7 | 14.5 | 15.5 | 16.6 |
| 3H | 13.6 | 14.6 | 14.5 | 15.5 | 16.6 | 16.4 | 17.4 | 17.3 | 18.2 | 19.4 |
| 4H | 14.6 | 15.5 | 15.5 | 16.4 | 17.5 | 18.0 | 18.9 | 18.9 | 19.8 | 20.9 |
| 6H | 15.5 | 16.4 | 16.4 | 17.3 | 18.4 | 19.8 | 20.6 | 20.7 | 21.5 | 22.7 |
| 8H | 16.0 | 16.8 | 16.9 | 17.7 | 18.9 | 20.7 | 21.5 | 21.7 | 22.4 | 23.6 |
| 12H | 16.5 | 17.3 | 17.5 | 18.2 | 19.4 | 21.9 | 22.6 | 22.8 | 23.6 | 24.8 |
| 4H 2H | 13.1 | 13.9 | 13.9 | 14.8 | 16.0 | 14.3 | 15.2 | 15.2 | 16.1 | 17.2 |
| 3H | 15.3 | 16.0 | 16.2 | 16.9 | 18.1 | 17.3 | 18.1 | 18.3 | 19.0 | 20.2 |
| 4H | 16.4 | 17.1 | 17.4 | 18.1 | 19.3 | 19.1 | 19.8 | 20.0 | 20.7 | 21.9 |
| 6H | 17.6 | 18.2 | 18.6 | 19.2 | 20.4 | 21.0 | 21.6 | 22.0 | 22.6 | 23.9 |
| 8H | 18.2 | 18.8 | 19.2 | 19.7 | 21.0 | 22.1 | 22.7 | 23.1 | 23.7 | 24.9 |
| 12H | 18.8 | 19.3 | 19.8 | 20.3 | 21.6 | 23.4 | 23.9 | 24.4 | 24.9 | 26.2 |
| 8H 4H | 17.6 | 18.2 | 18.6 | 19.1 | 20.4 | 19.6 | 20.1 | 20.5 | 21.1 | 22.4 |
| 6H | 19.2 | 19.7 | 20.2 | 20.7 | 22.0 | 21.8 | 22.3 | 22.8 | 23.3 | 24.6 |
| 8H | 20.1 | 20.5 | 21.1 | 21.5 | 22.8 | 23.2 | 23.6 | 24.2 | 24.6 | 25.9 |
| 12H | 20.9 | 21.3 | 21.9 | 22.3 | 23.6 | 24.7 | 25.0 | 25.7 | 26.0 | 27.4 |
| 12H 4H | 17.9 | 18.5 | 18.9 | 19.4 | 20.7 | 19.7 | 20.2 | 20.6 | 21.2 | 22.4 |
| 6H | 19.8 | 20.2 | 20.8 | 21.2 | 22.5 | 22.1 | 22.5 | 23.0 | 23.5 | 24.8 |
| 8H | 20.8 | 21.2 | 21.8 | 22.2 | 23.5 | 23.5 | 23.8 | 24.5 | 24.9 | 26.2 |
| Variations with the observer position at spacings: | | | | | | | | | | |
| S = 1.0H | + 0.1 / - 0.1 | | | | | + 0.1 / - 0.1 | | | | |
| 1.5H | + 0.2 / - 0.3 | | | | | + 0.2 / - 0.3 | | | | |
| 2.0H | + 0.3 / - 0.5 | | | | | + 0.3 / - 0.4 | | | | |

CIE Pub.117, 1856 lm Total Lamp Luminous Flux Corrected (8log(F/F0) = 2.1)
 Area: 0.13725 m2

C Range: 0 - 360DEG
 C Interval: 15.0DEG
 Test Speed: HIGH
 Temperature: 25.3DEG
 Operators: Alan Wang
 Test Date: 17 October 2023

γ Range: 0 - 180DEG
 γ Interval: 1.0DEG
 Test System: EVERFINE GO-R5000_V2 SYSTEM V2.00.416
 Humidity: 43.6%
 Test Distance: 2.500m [K=1.0393]
 Remarks:

UTILIZATION FACTORS TABLE

| | | |
|--|----------|------------------|
| Test:U:120.0V I:0.2402A P:28.48W PF:0.9881 Freq:60.00Hz Lamp Flux:1855.67x1 lm | | |
| NAME: | TYPE:LED | WEIGHT: |
| SPEC.:ASD-LWS27C-36D30CCBK_5000K | DIM.: | SERIAL No.: |
| MFR.: ASD Lighting Corp | SUR.: | Shielding Angle: |

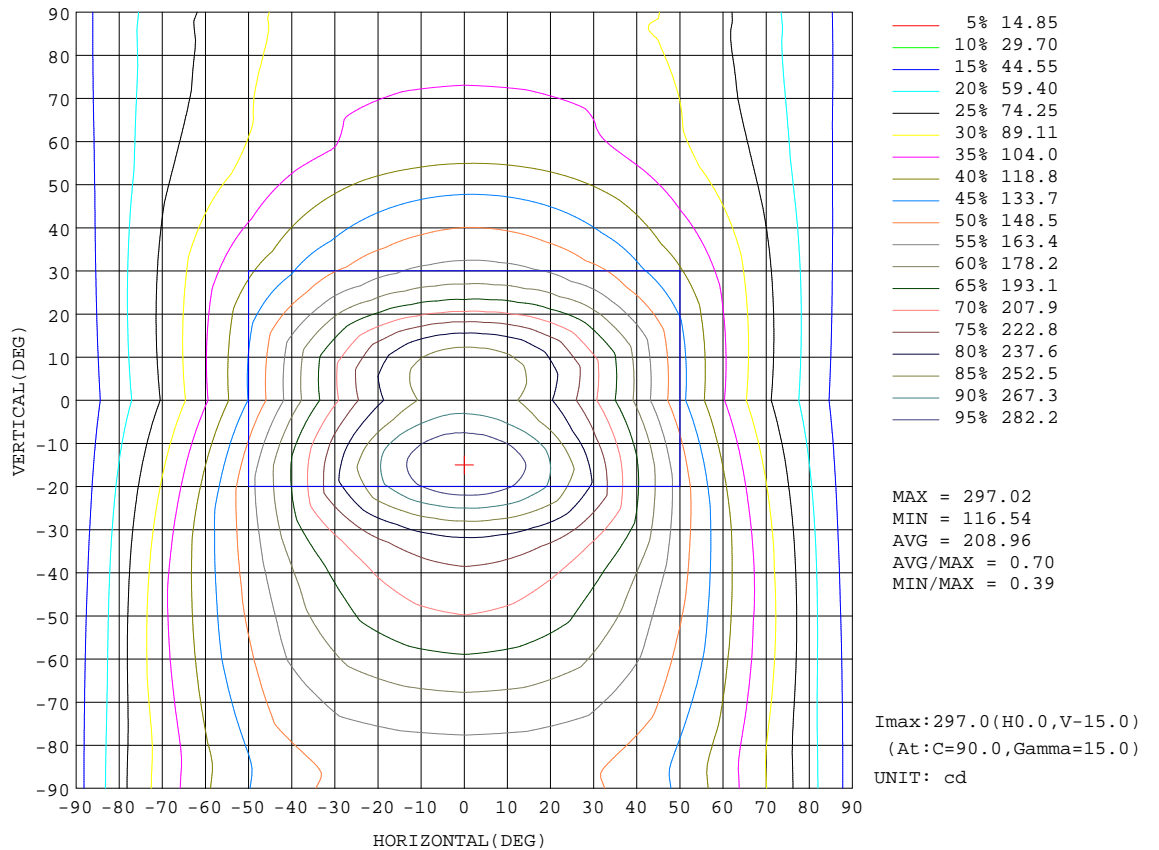
| REFLECTANCE | | | | | | | | | | |
|----------------------------------|---|-----|-----------|-----|-----|-----|---------------|-----|-----|--------|
| Ceiling | 0.8 | 0.8 | 0.8 | 0.7 | 0.7 | 0.7 | 0.5 | 0.5 | 0.5 | 0 |
| Walls | 0.7 | 0.5 | 0.3 | 0.7 | 0.5 | 0.3 | 0.7 | 0.5 | 0.3 | 0 |
| Working plane | 0.2 | 0.2 | 0.2 | 0.2 | 0.2 | 0.2 | 0.2 | 0.2 | 0.2 | 0 |
| ROOM INDEX | UTILIZATION FACTORS(PERCENT) $k(RI) \times RCR = 5$ | | | | | | | | | |
| k = 0.60 | 41 | 29 | 23 | 39 | 28 | 22 | 35 | 26 | 20 | 13 |
| 0.80 | 50 | 37 | 30 | 47 | 36 | 28 | 42 | 32 | 26 | 17 |
| 1.00 | 57 | 44 | 36 | 54 | 42 | 35 | 47 | 39 | 32 | 20 |
| 1.25 | 64 | 51 | 43 | 60 | 48 | 41 | 52 | 43 | 37 | 23 |
| 1.50 | 69 | 57 | 48 | 64 | 53 | 46 | 56 | 47 | 41 | 26 |
| 2.00 | 76 | 65 | 57 | 71 | 61 | 54 | 61 | 53 | 47 | 30 |
| 2.50 | 81 | 71 | 63 | 75 | 66 | 59 | 64 | 57 | 52 | 32 |
| 3.00 | 85 | 75 | 68 | 78 | 70 | 64 | 67 | 61 | 56 | 34 |
| 4.00 | 89 | 81 | 75 | 83 | 76 | 70 | 70 | 65 | 61 | 37 |
| 5.00 | 93 | 86 | 80 | 86 | 79 | 74 | 73 | 68 | 64 | 39 |
| ROOM INDEX | UF(total) | | | | | | | | | Direct |
| According to DIN EN 13032-2 2004 | | | Suspended | | | | SHRNOM = 1.25 | | | |

C Range: 0 - 360DEG
 C Interval: 15.0DEG
 Test Speed: HIGH
 Temperature: 25.3DEG
 Operators: Alan Wang
 Test Date: 17 October 2023

γ Range: 0 - 180DEG
 γ Interval: 1.0DEG
 Test System: EVERFINE GO-R5000_V2 SYSTEM V2.00.416
 Humidity: 43.6%
 Test Distance: 2.500m [K=1.0393]
 Remarks:

ISOCANDELA DIAGRAM

| | | |
|--|----------|------------------|
| Test:U:120.0V I:0.2402A P:28.48W PF:0.9881 Freq:60.00Hz Lamp Flux:1855.67x1 lm | | |
| NAME: | TYPE:LED | WEIGHT: |
| SPEC.:ASD-LWS27C-36D30CCBK_5000K | DIM.: | SERIAL No.: |
| MFR.: ASD Lighting Corp | SUR.: | Shielding Angle: |

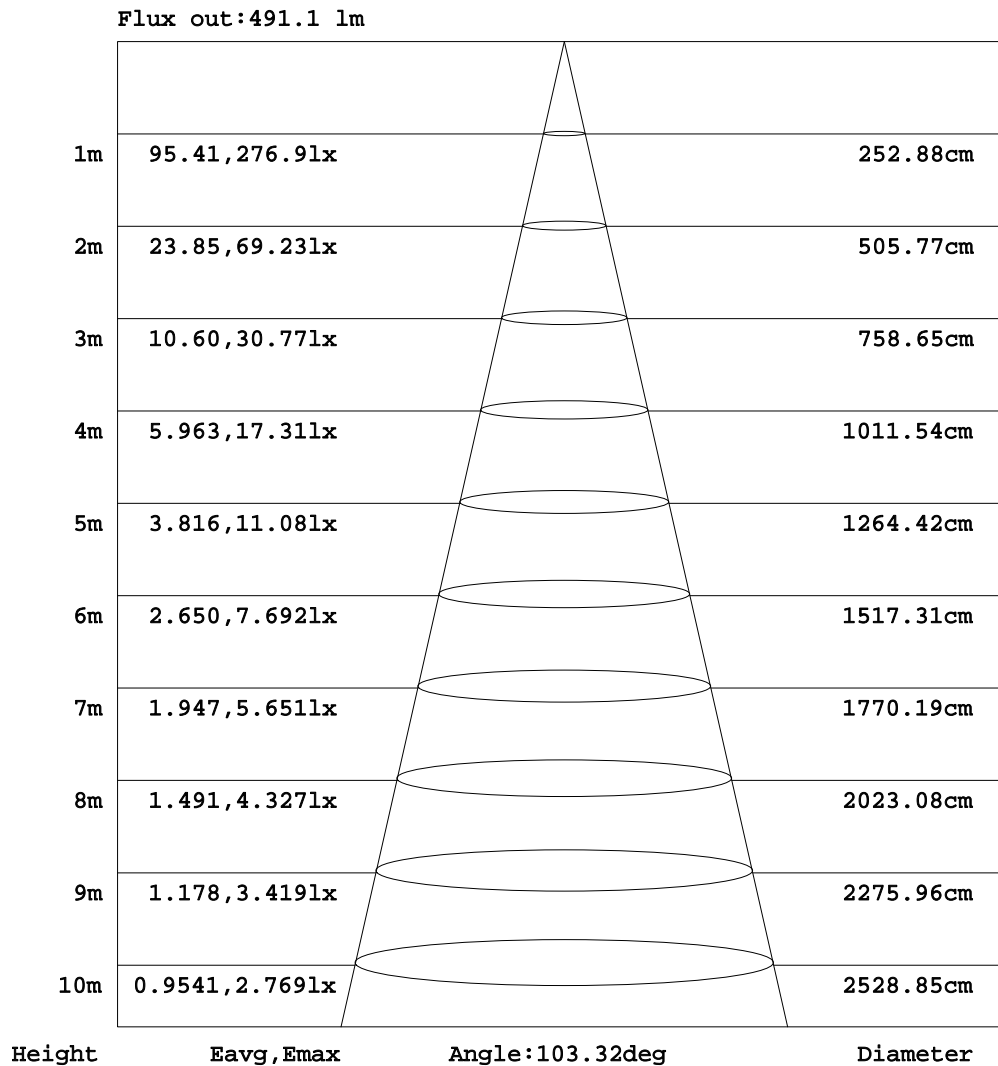


C Range: 0 - 360DEG
 C Interval: 15.0DEG
 Test Speed: HIGH
 Temperature: 25.3DEG
 Operators:Alan Wang
 Test Date:17 October 2023

γ Range: 0 - 180DEG
 γ Interval: 1.0DEG
 Test System:EVERFINE GO-R5000_V2 SYSTEM V2.00.416
 Humidity: 43.6%
 Test Distance:2.500m [K=1.0393]
 Remarks:

AAI Figure

| | | |
|--|----------|------------------|
| Test:U:120.0V I:0.2402A P:28.48W PF:0.9881 Freq:60.00Hz Lamp Flux:1855.67x1 lm | | |
| NAME: | TYPE:LED | WEIGHT: |
| SPEC.:ASD-LWS27C-36D30CCBK_5000K | DIM.: | SERIAL No.: |
| MFR.: ASD Lighting Corp | SUR.: | Shielding Angle: |



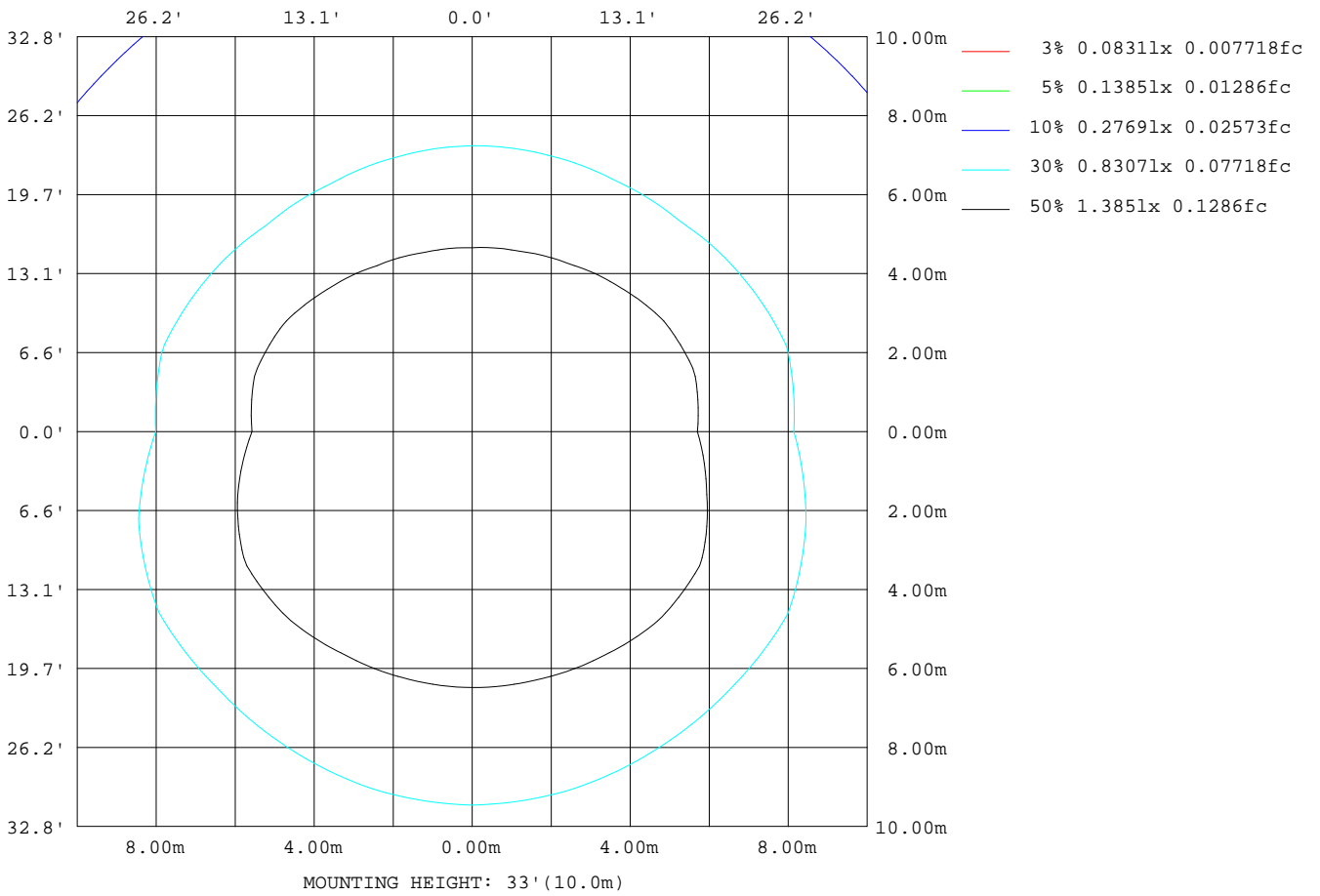
Note:The Curves indicate the illuminated area and the average illumination when the luminaire is at different distance.

C Range: 0 - 360DEG
 C Interval: 15.0DEG
 Test Speed: HIGH
 Temperature: 25.3DEG
 Operators: Alan Wang
 Test Date: 17 October 2023

γ Range: 0 - 180DEG
 γ Interval: 1.0DEG
 Test System: EVERFINE GO-R5000_V2 SYSTEM V2.00.416
 Humidity: 43.6%
 Test Distance: 2.500m [K=1.0393]
 Remarks:

ISOLUX DIAGRAM

| | | |
|--|----------|------------------|
| Test:U:120.0V I:0.2402A P:28.48W PF:0.9881 Freq:60.00Hz Lamp Flux:1855.67x1 lm | | |
| NAME: | TYPE:LED | WEIGHT: |
| SPEC.:ASD-LWS27C-36D30CCBK_5000K | DIM.: | SERIAL No.: |
| MFR.: ASD Lighting Corp | SUR.: | Shielding Angle: |



C Range: 0 - 360DEG
 C Interval: 15.0DEG
 Test Speed: HIGH
 Temperature: 25.3DEG
 Operators: Alan Wang
 Test Date: 17 October 2023

γ Range: 0 - 180DEG
 γ Interval: 1.0DEG
 Test System: EVERFINE GO-R5000_V2 SYSTEM V2.00.416
 Humidity: 43.6%
 Test Distance: 2.500m [K=1.0393]
 Remarks:

LED Avg.L Report

| | | |
|--|----------|------------------|
| Test:U:120.0V I:0.2402A P:28.48W PF:0.9881 Freq:60.00Hz Lamp Flux:1855.67x1 lm | | |
| NAME: | TYPE:LED | WEIGHT: |
| SPEC.:ASD-LWS27C-36D30CCBK_5000K | DIM.: | SERIAL No.: |
| MFR.: ASD Lighting Corp | SUR.: | Shielding Angle: |

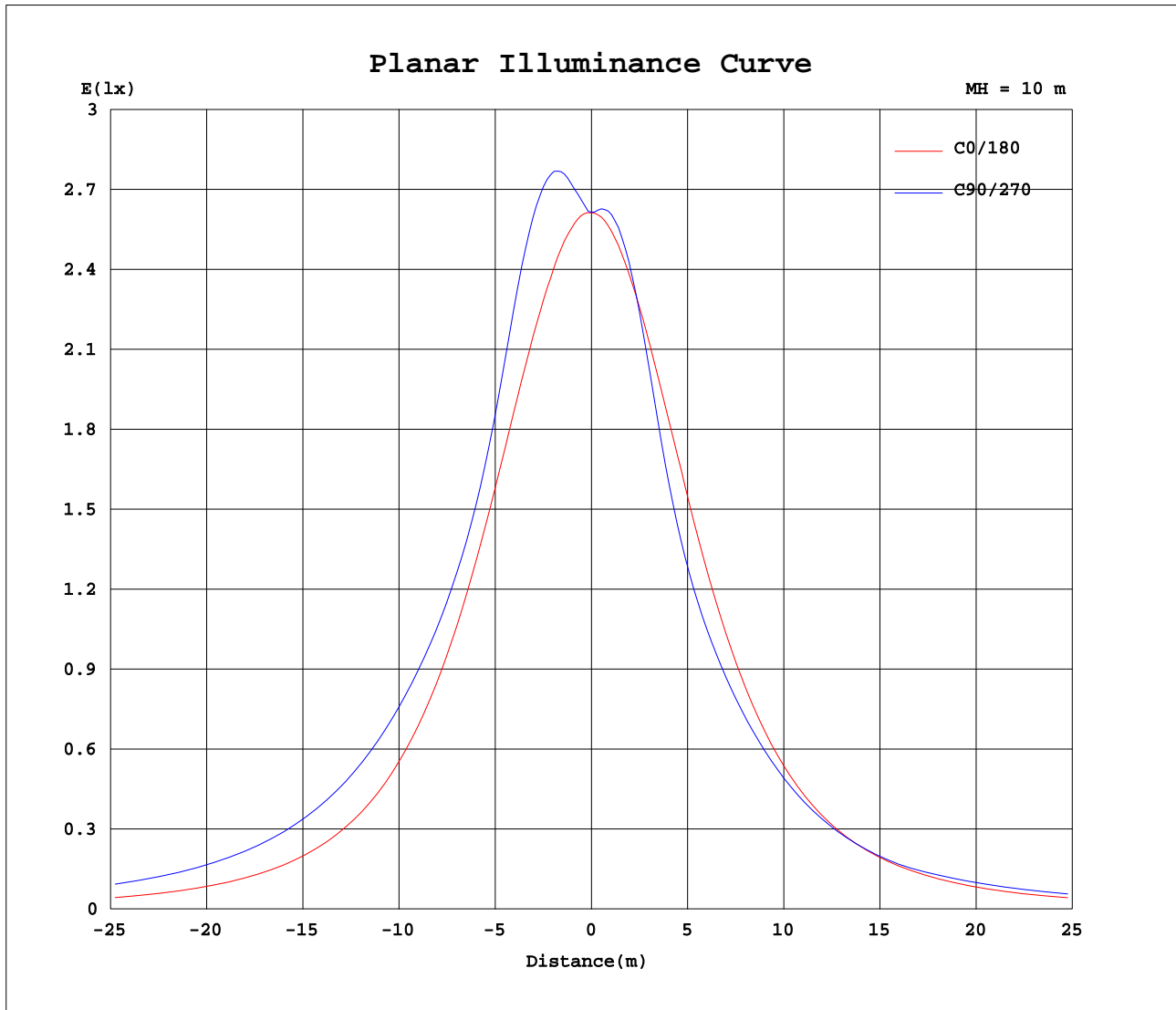
| AvgL | cd/m2 |
|----------------|-------|
| L_0~180(65)av | 1537 |
| L_0~180(75)av | 1817 |
| L_0~180(85)av | 3640 |
| L_90~270(65)av | 2524 |
| L_90~270(75)av | 3791 |
| L_90~270(85)av | 10412 |
| L_45(65)av | 2308 |
| L_45(75)av | 3502 |
| L_45(85)av | 9642 |

Standard: GB/T 29293-2012

C Range: 0 - 360DEG
 C Interval: 15.0DEG
 Test Speed: HIGH
 Temperature: 25.3DEG
 Operators: Alan Wang
 Test Date: 17 October 2023

γ Range: 0 - 180DEG
 γ Interval: 1.0DEG
 Test System: EVERFINE GO-R5000_V2 SYSTEM V2.00.416
 Humidity: 43.6%
 Test Distance: 2.500m [K=1.0393]
 Remarks:

Planar Illuminance Curve



C Range: 0 - 360DEG
 C Interval: 15.0DEG
 Test Speed: HIGH
 Temperature: 25.3DEG
 Operators: Alan Wang
 Test Date: 17 October 2023

γ Range: 0 - 180DEG
 γ Interval: 1.0DEG
 Test System: EVERFINE GO-R5000_V2 SYSTEM V2.00.416
 Humidity: 43.6%
 Test Distance: 2.500m [K=1.0393]
 Remarks:

LUMINOUS DISTRIBUTION INTENSITY DATA

| | | |
|--|----------|------------------|
| Test:U:120.0V I:0.2402A P:28.48W PF:0.9881 Freq:60.00Hz Lamp Flux:1855.67x1 lm | | |
| NAME: | TYPE:LED | WEIGHT: |
| SPEC.:ASD-LWS27C-36D30CCBK_5000K | DIM.: | SERIAL No.: |
| MFR.: ASD Lighting Corp | SUR.: | Shielding Angle: |

Table--1

UNIT: cd

| C (DEG) \ γ (DEG) | 0 | 15 | 30 | 45 | 60 | 75 | 90 | 105 | 120 | 135 | 150 | 165 | 180 | 195 | 210 | 225 | 240 | 255 | 270 |
|-------------------|------|------|-----|-----|-----|-----|------|------|-----|-----|-----|------|------|------|------|------|------|------|------|
| 0 | 261 | 261 | 261 | 261 | 261 | 261 | 261 | 261 | 261 | 261 | 261 | 261 | 261 | 261 | 261 | 261 | 261 | 261 | 261 |
| 5 | 260 | 261 | 264 | 268 | 270 | 273 | 273 | 273 | 271 | 268 | 264 | 261 | 259 | 260 | 262 | 263 | 264 | 265 | 265 |
| 10 | 256 | 260 | 268 | 277 | 284 | 288 | 290 | 289 | 284 | 277 | 268 | 259 | 254 | 256 | 259 | 260 | 260 | 259 | 259 |
| 15 | 248 | 256 | 270 | 283 | 292 | 296 | 297 | 296 | 291 | 282 | 270 | 255 | 246 | 249 | 251 | 249 | 245 | 242 | 240 |
| 20 | 239 | 250 | 269 | 283 | 289 | 291 | 290 | 290 | 288 | 281 | 268 | 248 | 234 | 239 | 239 | 231 | 221 | 213 | 211 |
| 25 | 225 | 240 | 263 | 274 | 274 | 269 | 267 | 268 | 272 | 272 | 262 | 239 | 221 | 226 | 222 | 207 | 194 | 187 | 185 |
| 30 | 210 | 228 | 252 | 258 | 251 | 246 | 244 | 244 | 248 | 255 | 250 | 228 | 205 | 210 | 201 | 183 | 173 | 169 | 169 |
| 35 | 193 | 214 | 237 | 237 | 231 | 229 | 229 | 228 | 228 | 233 | 235 | 214 | 188 | 192 | 179 | 164 | 158 | 157 | 158 |
| 40 | 175 | 199 | 219 | 218 | 217 | 219 | 221 | 219 | 216 | 215 | 217 | 199 | 170 | 174 | 160 | 149 | 147 | 147 | 149 |
| 45 | 157 | 182 | 201 | 203 | 208 | 212 | 215 | 212 | 207 | 200 | 198 | 182 | 152 | 156 | 143 | 137 | 137 | 138 | 139 |
| 50 | 138 | 165 | 184 | 192 | 201 | 206 | 208 | 205 | 200 | 191 | 181 | 166 | 134 | 138 | 129 | 127 | 128 | 128 | 129 |
| 55 | 121 | 149 | 170 | 183 | 194 | 198 | 200 | 198 | 193 | 182 | 168 | 151 | 118 | 123 | 117 | 118 | 118 | 118 | 119 |
| 60 | 105 | 134 | 157 | 175 | 186 | 190 | 191 | 190 | 186 | 175 | 157 | 137 | 102 | 109 | 106 | 108 | 109 | 109 | 112 |
| 65 | 90.2 | 121 | 147 | 167 | 178 | 182 | 183 | 182 | 178 | 168 | 148 | 124 | 88.1 | 96.6 | 96.4 | 99.2 | 105 | 109 | 110 |
| 70 | 77.1 | 110 | 138 | 160 | 171 | 174 | 175 | 174 | 171 | 161 | 139 | 113 | 75.4 | 85.8 | 87.4 | 96.3 | 103 | 106 | 106 |
| 75 | 65.2 | 99.3 | 130 | 153 | 164 | 167 | 167 | 166 | 164 | 154 | 132 | 104 | 63.9 | 75.9 | 81.1 | 94.9 | 100 | 102 | 102 |
| 80 | 54.0 | 89.4 | 122 | 146 | 157 | 160 | 160 | 160 | 158 | 148 | 125 | 94.4 | 53.3 | 66.8 | 79.8 | 92.3 | 97.0 | 98.3 | 98.5 |
| 85 | 43.7 | 80.6 | 115 | 140 | 151 | 154 | 155 | 154 | 152 | 142 | 118 | 86.0 | 43.4 | 61.8 | 77.5 | 90.0 | 94.1 | 94.8 | 94.6 |
| 90 | 38.8 | 77.4 | 113 | 139 | 151 | 153 | 154 | 154 | 152 | 141 | 117 | 83.7 | 39.1 | 60.1 | 76.3 | 89.3 | 93.5 | 94.3 | 94.2 |
| 95 | 43.0 | 80.9 | 117 | 143 | 155 | 158 | 159 | 159 | 157 | 146 | 121 | 87.6 | 43.4 | 57.1 | 73.4 | 85.9 | 90.5 | 91.9 | 92.1 |
| 100 | 52.5 | 89.4 | 125 | 151 | 164 | 168 | 169 | 168 | 166 | 154 | 129 | 95.6 | 52.6 | 60.7 | 73.3 | 86.1 | 91.3 | 93.0 | 93.0 |
| 105 | 62.8 | 98.1 | 132 | 159 | 173 | 178 | 179 | 178 | 175 | 163 | 137 | 104 | 62.3 | 68.5 | 72.9 | 86.8 | 92.6 | 94.8 | 95.1 |
| 110 | 74.0 | 107 | 140 | 167 | 182 | 187 | 189 | 188 | 184 | 171 | 145 | 111 | 72.9 | 77.1 | 78.6 | 86.4 | 94.0 | 97.2 | 98.1 |
| 115 | 86.3 | 118 | 147 | 174 | 190 | 197 | 199 | 198 | 193 | 178 | 152 | 118 | 84.5 | 86.2 | 86.5 | 88.5 | 93.8 | 98.4 | 100 |
| 120 | 99.9 | 129 | 155 | 180 | 198 | 205 | 208 | 206 | 200 | 185 | 160 | 126 | 97.8 | 96.1 | 95.9 | 96.7 | 96.9 | 97.9 | 99.4 |
| 125 | 115 | 141 | 164 | 186 | 204 | 212 | 215 | 214 | 207 | 191 | 167 | 135 | 112 | 108 | 105 | 105 | 106 | 105 | 105 |
| 130 | 130 | 154 | 174 | 191 | 208 | 218 | 222 | 219 | 212 | 196 | 176 | 152 | 128 | 114 | 116 | 113 | 114 | 114 | 114 |
| 135 | 147 | 168 | 188 | 197 | 212 | 221 | 225 | 223 | 215 | 202 | 187 | 169 | 145 | 126 | 129 | 122 | 123 | 123 | 124 |
| 140 | 164 | 183 | 203 | 206 | 215 | 223 | 227 | 225 | 218 | 209 | 199 | 183 | 162 | 151 | 145 | 133 | 131 | 132 | 132 |
| 145 | 180 | 196 | 218 | 219 | 221 | 226 | 229 | 227 | 223 | 221 | 209 | 197 | 178 | 168 | 159 | 147 | 141 | 141 | 141 |
| 150 | 192 | 208 | 232 | 236 | 233 | 232 | 233 | 233 | 233 | 237 | 219 | 210 | 192 | 178 | 172 | 166 | 156 | 152 | 152 |
| 155 | 190 | 219 | 242 | 251 | 250 | 247 | 247 | 248 | 251 | 251 | 231 | 214 | 189 | 169 | 194 | 179 | 175 | 170 | 168 |
| 160 | 180 | 228 | 247 | 260 | 265 | 265 | 265 | 265 | 266 | 257 | 230 | 199 | 181 | 184 | 177 | 185 | 190 | 193 | 192 |
| 165 | 164 | 199 | 248 | 261 | 269 | 273 | 274 | 273 | 268 | 232 | 198 | 179 | 169 | 170 | 160 | 164 | 171 | 204 | 216 |
| 170 | 147 | 157 | 235 | 247 | 261 | 266 | 267 | 266 | 238 | 188 | 184 | 173 | 154 | 154 | 154 | 157 | 155 | 146 | 192 |
| 175 | 167 | 164 | 187 | 198 | 231 | 249 | 249 | 224 | 158 | 182 | 179 | 175 | 174 | 174 | 173 | 165 | 167 | 155 | 102 |
| 180 | 190 | 188 | 178 | 172 | 178 | 114 | 54.3 | 64.5 | 157 | 173 | 181 | 187 | 189 | 188 | 186 | 179 | 171 | 169 | 145 |

C Range: 0 - 360DEG
 C Interval: 15.0DEG
 Test Speed: HIGH
 Temperature: 25.3DEG
 Operators: Alan Wang
 Test Date: 17 October 2023

γ Range: 0 - 180DEG
 γ Interval: 1.0DEG
 Test System: EVERFINE GO-R5000_V2 SYSTEM V2.00.416
 Humidity: 43.6%
 Test Distance: 2.500m [K=1.0393]
 Remarks:

LUMINOUS DISTRIBUTION INTENSITY DATA

| | | |
|--|----------|------------------|
| Test:U:120.0V I:0.2402A P:28.48W PF:0.9881 Freq:60.00Hz Lamp Flux:1855.67x1 lm | | |
| NAME: | TYPE:LED | WEIGHT: |
| SPEC.:ASD-LWS27C-36D30CCBK_5000K | DIM.: | SERIAL No.: |
| MFR.: ASD Lighting Corp | SUR.: | Shielding Angle: |

Table--2

UNIT: cd

| C(DEG) γ (DEG) | 285 | 300 | 315 | 330 | 345 | | | | | | | | | | | | | | |
|-------------------|------|------|------|------|------|--|--|--|--|--|--|--|--|--|--|--|--|--|--|
| 0 | 261 | 261 | 261 | 261 | 261 | | | | | | | | | | | | | | |
| 5 | 264 | 264 | 263 | 262 | 261 | | | | | | | | | | | | | | |
| 10 | 260 | 261 | 262 | 261 | 258 | | | | | | | | | | | | | | |
| 15 | 242 | 247 | 252 | 254 | 252 | | | | | | | | | | | | | | |
| 20 | 214 | 224 | 235 | 243 | 243 | | | | | | | | | | | | | | |
| 25 | 188 | 197 | 211 | 226 | 231 | | | | | | | | | | | | | | |
| 30 | 170 | 176 | 187 | 205 | 215 | | | | | | | | | | | | | | |
| 35 | 159 | 161 | 168 | 184 | 198 | | | | | | | | | | | | | | |
| 40 | 149 | 150 | 153 | 165 | 179 | | | | | | | | | | | | | | |
| 45 | 140 | 140 | 141 | 147 | 161 | | | | | | | | | | | | | | |
| 50 | 130 | 130 | 131 | 133 | 143 | | | | | | | | | | | | | | |
| 55 | 119 | 120 | 121 | 120 | 126 | | | | | | | | | | | | | | |
| 60 | 111 | 110 | 111 | 109 | 112 | | | | | | | | | | | | | | |
| 65 | 109 | 106 | 101 | 99.0 | 98.3 | | | | | | | | | | | | | | |
| 70 | 106 | 104 | 98.4 | 89.3 | 86.2 | | | | | | | | | | | | | | |
| 75 | 102 | 100 | 96.0 | 83.1 | 75.1 | | | | | | | | | | | | | | |
| 80 | 97.9 | 96.8 | 92.7 | 80.6 | 64.8 | | | | | | | | | | | | | | |
| 85 | 94.0 | 93.1 | 89.4 | 77.5 | 59.6 | | | | | | | | | | | | | | |
| 90 | 93.8 | 92.8 | 89.3 | 77.0 | 57.4 | | | | | | | | | | | | | | |
| 95 | 91.6 | 90.2 | 85.9 | 72.8 | 53.0 | | | | | | | | | | | | | | |
| 100 | 92.1 | 90.2 | 85.1 | 71.6 | 54.7 | | | | | | | | | | | | | | |
| 105 | 94.0 | 91.4 | 85.4 | 71.5 | 63.1 | | | | | | | | | | | | | | |
| 110 | 96.4 | 93.5 | 85.9 | 75.6 | 71.7 | | | | | | | | | | | | | | |
| 115 | 98.2 | 93.5 | 86.5 | 84.2 | 81.2 | | | | | | | | | | | | | | |
| 120 | 97.4 | 96.2 | 95.0 | 93.0 | 92.0 | | | | | | | | | | | | | | |
| 125 | 105 | 105 | 104 | 103 | 104 | | | | | | | | | | | | | | |
| 130 | 114 | 114 | 113 | 113 | 112 | | | | | | | | | | | | | | |
| 135 | 123 | 123 | 123 | 126 | 127 | | | | | | | | | | | | | | |
| 140 | 132 | 132 | 134 | 141 | 145 | | | | | | | | | | | | | | |
| 145 | 142 | 143 | 147 | 157 | 166 | | | | | | | | | | | | | | |
| 150 | 153 | 156 | 165 | 171 | 181 | | | | | | | | | | | | | | |
| 155 | 169 | 176 | 182 | 189 | 185 | | | | | | | | | | | | | | |
| 160 | 193 | 199 | 202 | 210 | 171 | | | | | | | | | | | | | | |
| 165 | 215 | 218 | 224 | 216 | 150 | | | | | | | | | | | | | | |
| 170 | 235 | 237 | 208 | 171 | 151 | | | | | | | | | | | | | | |
| 175 | 94.1 | 133 | 149 | 158 | 153 | | | | | | | | | | | | | | |
| 180 | 95.6 | 157 | 150 | 171 | 179 | | | | | | | | | | | | | | |

C Range: 0 - 360DEG
 C Interval: 15.0DEG
 Test Speed: HIGH
 Temperature: 25.3DEG
 Operators: Alan Wang
 Test Date: 17 October 2023

γ Range: 0 - 180DEG
 γ Interval: 1.0DEG
 Test System: EVERFINE GO-R5000_V2 SYSTEM V2.00.416
 Humidity: 43.6%
 Test Distance: 2.500m [K=1.0393]
 Remarks: