



LED DOUBLE RING FLUSHMOUNT

with Motion Sensor

► **DESIGN & OPTIONS** - LED DOUBLE RING FLUSHMOUNT WITH MOTION SENSOR has a modern, multipurpose design and a stylish look with efficient lighting. The built-in bi-level microwave motion sensor will turn off the fixture automatically when no motion is detected. It is designed to operate on 120-277V circuits. It also includes a color adjustable option, letting you choose either 3,000K, 4,000K or 5,000K with a simple switch. It comes in 12" and 14" sizes with a BRUSHED NICKEL finish.

► **INSTALLATION** - Installation is quick and easy: just drive the screws into the outlet box, connect the wires and fix the lamp body on screws. Wire nuts, screws and all installation accessories are provided. Refer to install instructions for detailed steps.

► **APPLICATION** - This LED DOUBLE RING FLUSHMOUNT WITH MOTION SENSOR provides bright, yet smooth lighting for your family room, bedroom, hallway, corridor, or any other common area in your living space. It can be used as an additional light to an already existing ceiling light as well. This fixture is also Damp location rated.

► **ENERGY SAVINGS & EFFICIENCY** - Replacing an incandescent fixture with LED DOUBLE RING FLUSHMOUNT WITH MOTION SENSOR can save you 8 times as much on your current energy costs. With a lifespan of 50,000 hours, these fixtures are made to last decades with normal operation! This fixture will save you a significant amount of money in its lifetime.

► **CERTIFICATION & WARRANTY** - Buy with confidence: ASD provides a 5-year warranty along with ETL and ENERGY STAR certifications to guarantee top quality products and safety!

Top US certifications allow participation in rebates; please check the rebate programs available in your state.

Catalog number	
Notes	
Type	



PRODUCT LEGEND:

Family	Voltage	Size	Dimmable	Watts	CCT	Option	Finish
ASD-LFMDR	XX	XX	X	XX	XX	XX	XX
LED Double Ring Flushmount	MV = 120-277 V	12 = 12 inch 14 = 14 inch	N = Non-dimmable	15 = 15 W 21 = 21 W	CC = 3,000/4,000/5,000 K	MS = Motion Sensor	NK = Brushed Nickel

LED DOUBLE RING FLUSHMOUNT WITH MOTION SENSOR:

Model	Size	Watts	Voltage	Dimmable	CCT	Lumens	Finish	Dimensions (LxWxH)
ASD-LFMDR-MV-12N15CC-MS-NK	12 inch	15 W	120-277 V	NO	3,000/4,000/5,000 K	1,050 lm	Brushed Nickel	12" x 12" x 3 1/8"
ASD-LFMDR-MV-14N21CC-MS-NK	14 inch	21 W	120-277 V	NO	3,000/4,000/5,000 K	1,500 lm	Brushed Nickel	14" x 14" x 3 1/2"

PRODUCT SPECIFICATIONS:

Construction & Materials			Electrical System		
Lens	White Acrylic		Input Voltage	120-277 V	
Housing	Steel		Max input current	ASD-LFMDR-MV-12N15CC-MS-NK	0.15 A
Finish Color	Brushed Nickel			ASD-LFMDR-MV-14N21CC-MS-NK	0.35 A
Weight	ASD-LFMDR-MV-12N15CC-MS-NK	1.8 lb (0.8 kg)	Inrush current (Action time)	ASD-LFMDR-MV-12N15CC-MS-NK	0.12 A (0.1S)
	ASD-LFMDR-MV-14N21CC-MS-NK	2.6 lb (1.2 kg)		ASD-LFMDR-MV-14N21CC-MS-NK	0.17 A (0.1S)
Environmental System			AC input range	min 120 V max 277 V	
Work Environment	Suitable for Damp Locations		Off State Power	0 W	
Operating Temperature	-4°F to 131°F / -20°C to 55°C		Power Consumption	ASD-LFMDR-MV-12N15CC-MS-NK	15 W
L70 life	> 50,000 hrs			ASD-LFMDR-MV-14N21CC-MS-NK	21 W
Optical System			Power Factor	> 0.9	
Luminous Flux	ASD-LFMDR-MV-12N15CC-MS-NK	1,050 lm	Output voltage	30-38 V	
	ASD-LFMDR-MV-14N21CC-MS-NK	1,500 lm			
Color Temperature	3,000/4,000/5,000 K		Max output current	ASD-LFMDR-MV-12N15CC-MS-NK	350 mA
CRI	> 80			ASD-LFMDR-MV-14N21CC-MS-NK	580 mA
			LED driver class	Class 2	
Regular and Voluntary Certifications					
5-year limited warranty					
cETLus certified 4001256					
Energy Star certified					

For most up-to-date spec sheets please refer to asd-lighting.com

ASD LIGHTING CORP

E-mail: orders@asd-lighting.com | Web site: www.asd-lighting.com





LED DOUBLE RING FLUSHMOUNT

with Motion Sensor

INSTALLATION GUIDE

IMPORTANT SAFETY INFORMATION:

Please read all the instructions below before installation.

- ▶ Make sure that the supply voltage corresponds to the rated product voltage.
- ▶ The product must be installed by a qualified electrician in accordance with the National Electrical Code and corresponding local codes.
- ▶ If the product is damaged, do not use it.

⚠ WARNING

RISK OF PERSONAL INJURY – READ and follow all WARNINGS and installation instructions.

Keep or give to the owner for future reference.

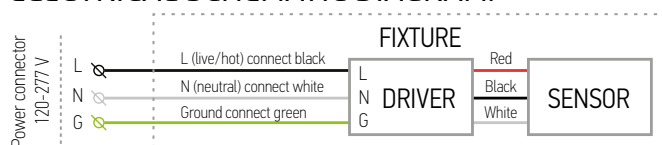
Risk of cuts: Wear gloves to prevent cuts or abrasions when removing from carton, handling, installing, and maintaining this product.

Risk of electric shock: This product must be installed in accordance with the applicable installation code by a person familiar with the construction and operation of the product and the hazards involved.

Risk of Fire: Minimum 194°F supply conductors. Consult a qualified electrician to ensure correct branch circuit conductor.


ASD® assumes no responsibility for claims arising out of improper or careless installation or handling of this product.

ELECTRICAL SCHEMATIC DIAGRAM:



MOTION SENSOR INFORMATION:

Motion Sensor Specifications	
Operating voltage	120-277 V
Switching capacity	Max. 200 W (Control gear) Max. 400 W (Incandescent lamp)
Standby power	< 1 W
Detection area	10% / 50% / 75% / 100%
Hold-time	5 s / 90 s / 5 min / 15 min
Daylight threshold	2Lx (0.2Fc) / 10Lx (0.9Fc) / 50Lx (4.7Fc) / Disable
Microwave frequency	5.8 GHz ± 75 MHz
Microwave power	< 0.3 mW
Interfaces	4-pole pluggable clamp terminal (L,N,N,L) for 1.5 mm 2 cable
Mounting height	Max. 39.4 ft
Detection range	Max. 52.5 x 39.4 ft (ceiling mounted)
Operating temperature	-4 +158°F (-20 +70°C)
IP rating	IP20
Size	3.2 x 1.4 x 0.9 inch



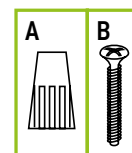
RF interference may affect the operation of this sensor

DEFAULT SETTING:

Detection Area	Hold Time	Daylight Sensor	Stand-by Period	Stand-by Dim Level
100 %	10 min	Disable	0 S	10 %

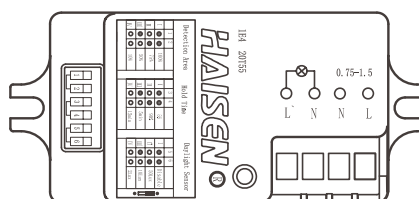
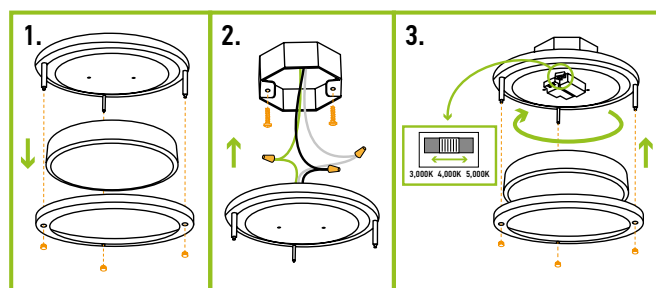
PACKAGE CONTENTS:

Description	Q-ty
LED Double Ring Flushmount with motion sensor	1
Wire nut (A)	3
Screw (B)	2
Box	1
Cut sheet	2



INSTALLATION STEPS:

1. Unscrew three cap nuts counter-clockwise, remove metal ring and the lens.
2. Attach two screws to the outlet box. Connect the wires: Black to Black, White to White, Ground to Ground. Carefully tuck all the wires back into the outlet box.
3. Place the fixture pan over the outlet box and feed fixture screws through keyhole slots. Rotate the fixture pan clockwise until screws lock into the narrow end of the keyhole slots and tighten screws firmly. Choose either 3,000K, 4,000K, or 5,000K with a simple switch, and set desired motion sensor settings. Secure the lens and metal ring to the fixture pan using three cap nuts.



ON	1	2	
I	ON	ON	100%
II	-	ON	75%
III	ON	-	50%
IV	-	-	10%

Detection Area

Detection area means detection coverage. It can be adjusted by combining DIP switches for specific application.

ON	3	4	
I	ON	ON	5s
II	-	ON	90s
III	ON	-	5min
IV	-	-	15min

Hold Time

Hold-time is the time period the light will be ON after the last detection.

ON	5	6	
I	ON	ON	Disable
II	-	ON	50Lx (4.7Fc)
III	ON	-	10Lx (0.9Fc)
IV	-	-	2Lx (0.2Fc)

Daylight threshold

Daylight sensor priors to motion sensor. Set threshold for specific needs. If set on «Disable» only the motion sensor will work.

ORDERING INFORMATION

Model	Size	Watts	UPC	Pcs. per Carton	Carton Size	Carton Weight	GTIN-14
ASD-LFMDR-MV-12N15CC-MS-NK	12 inch	15 W	810050733519	4	15.4' x 13.4' x 13.4'	12.1 lb	10810050733516
ASD-LFMDR-MV-14N21CC-MS-NK	14 inch	21 W	810050733526	4	15.9' x 15.9' x 15.9"	16.9 lb	10810050733523

For most up-to-date spec sheets please refer to asd-lighting.com

ASD LIGHTING CORP

E-mail: orders@asd-lighting.com | Web site: www.asd-lighting.com

