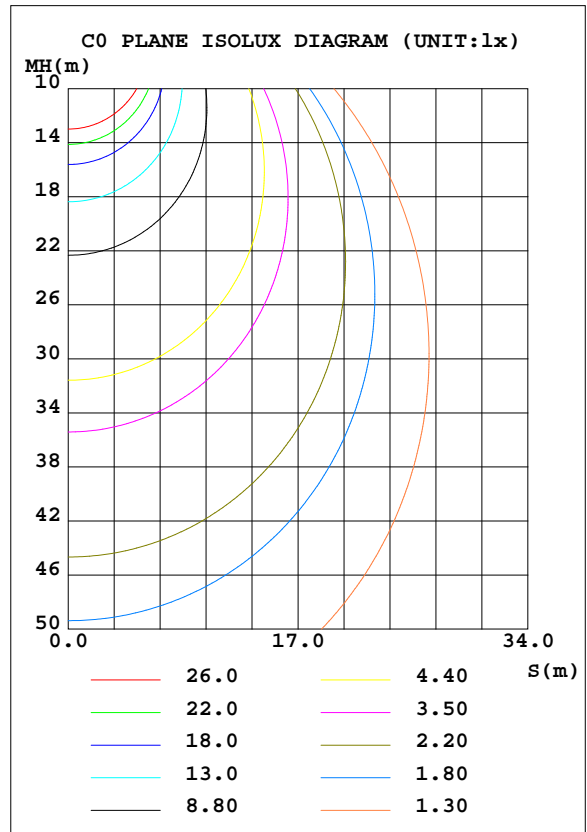
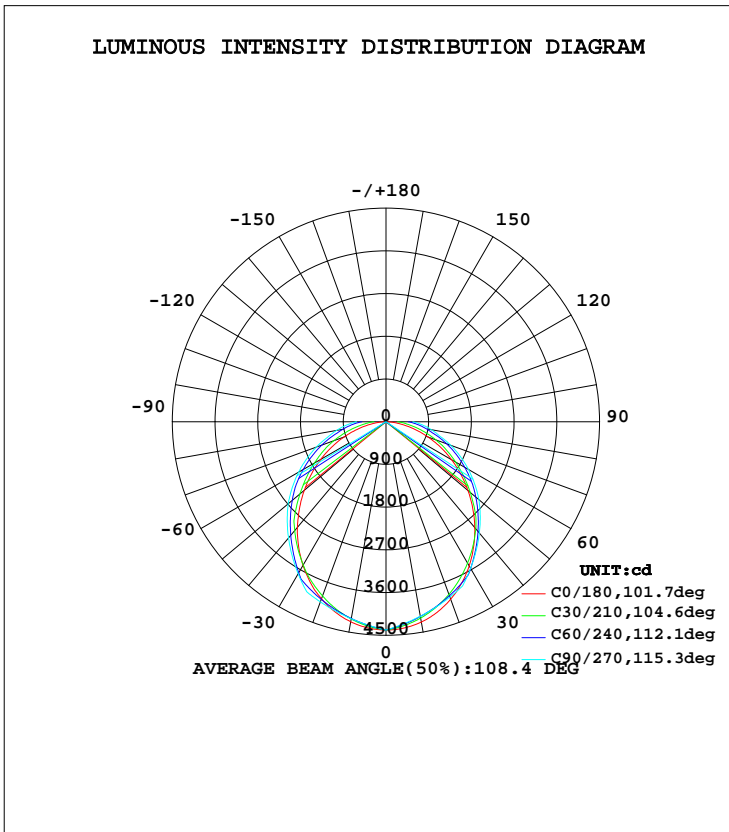


LUMINAIRE PHOTOMETRIC TEST REPORT

Test:U:119.9V I:0.7714A P:92.52W PF:0.9931 Lamp Flux:12523.4x1 lm		
NAME: ASD-LSF5-8A90AC-PRM (90W 5000K)	TYPE:LED	WEIGHT:
SPEC.:	DIM.: 2438*66*68mm	SERIAL No.:
MFR.:ASD lighting corp.	SUR.:2438*66*68mm	PROTECTION ANGLE:

DATA OF LAMP		PHOTOMETRIC DATA Eff: 135.36 lm/W			
MODEL	ASD-LSF5-8A90AC-PRM	I _{max} (cd)	4388	S/MH(C0/180)	1.19
NOMINAL POWER(W)	90	LOR(%)	100.0	S/MH(C90/270)	1.25
RATED VOLTAGE(V)	120-277	TOTAL FLUX(lm)	12523	η UP, DN(C0-180)	0.0,49.1
NOMINAL FLUX(lm)	12523.4	CIE CLASS	DIRECT	η UP, DN(C180-360)	0.0,50.9
LAMPS INSIDE	1	η up(%)	0.0	CIBSE SHR NOM	1.25
TEST VOLTAGE(V)	120	η down(%)	100.0	CIBSE SHR MAX	1.35



C Range: 0 - 360DEG
 C Interval: 5.0DEG
 Test Speed: HIGH
 Temperature:25DEG
 Operators:Peter
 Test Date:2020-03-26

γ Range: 0 - 90DEG
 γ Interval: 0.5DEG
 Test System:EVERFINE GO-2000A_V1 SYSTEM V2.0.290
 Humidity:50%
 Test Distance:8.900m [K=1.0000]
 Remarks:

ZONAL FLUX DIAGRAM

ZONAL FLUX DIAGRAM:

γ	C0	C45	C90	C135	C180	C225	C270	C315	γ	Φ zone	Φ total	lum, lamp
5	4363	4296	4274	4293	4360	4312	4301	4315	0- 5	103.7	103.7	0.83,0.83
10	4285	4179	4160	4173	4279	4210	4214	4217	5- 10	304.5	408.2	3.26,3.26
15	4156	4039	4046	4030	4149	4084	4127	4095	10- 15	491.5	899.7	7.18,7.18
20	3981	3880	3932	3868	3971	3939	4040	3955	15- 20	660.3	1560	12.5,12.5
25	3762	3704	3818	3690	3753	3774	3953	3795	20- 25	807.4	2367	18.9,18.9
30	3506	3516	3566	3502	3496	3600	3700	3624	25- 30	925.8	3293	26.3,26.3
35	3219	3287	3313	3276	3210	3379	3448	3404	30- 35	1006	4299	34.3,34.3
40	2910	2983	3061	2967	2904	3064	3195	3099	35- 40	1050	5349	42.7,42.7
45	2587	2682	2808	2667	2577	2761	2943	2796	40- 45	1060	6409	51.2,51.2
50	2256	2386	2556	2374	2248	2465	2690	2499	45- 50	1041	7450	59.5,59.5
55	1924	2098	2279	2091	1917	2180	2408	2213	50- 55	992.8	8442	67.4,67.4
60	1593	1820	2003	1817	1586	1902	2126	1935	55- 60	918.6	9361	74.7,74.7
65	1266	1528	1727	1523	1261	1601	1843	1637	60- 65	822.8	10184	81.3,81.3
70	945.3	1250	1451	1242	942.4	1313	1561	1352	65- 70	709.7	10893	87,87
75	640.3	983.9	1175	974.8	638.3	1038	1279	1079	70- 75	584.5	11478	91.7,91.7
80	361.3	737.8	971.4	728.3	361.5	783.6	1060	824.8	75- 80	457.9	11936	95.3,95.3
85	140.0	549.1	768.2	549.6	143.2	584.4	841.0	617.3	80- 85	344.0	12280	98.1,98.1
90	37.41	366.9	565.0	377.3	57.12	392.6	622.2	416.0	85- 90	243.6	12523	100,100
95									90- 95			
100									95-100			
105									100-105			
110									105-110			
115									110-115			
120									115-120			
125									120-125			
130									125-130			
135									130-135			
140									135-140			
145									140-145			
150									145-150			
155									150-155			
160									155-160			
165									160-165			
170									165-170			
175									170-175			
180									175-180			
DEG	LUMINOUS INTENSITY:cd								UNIT:lm			

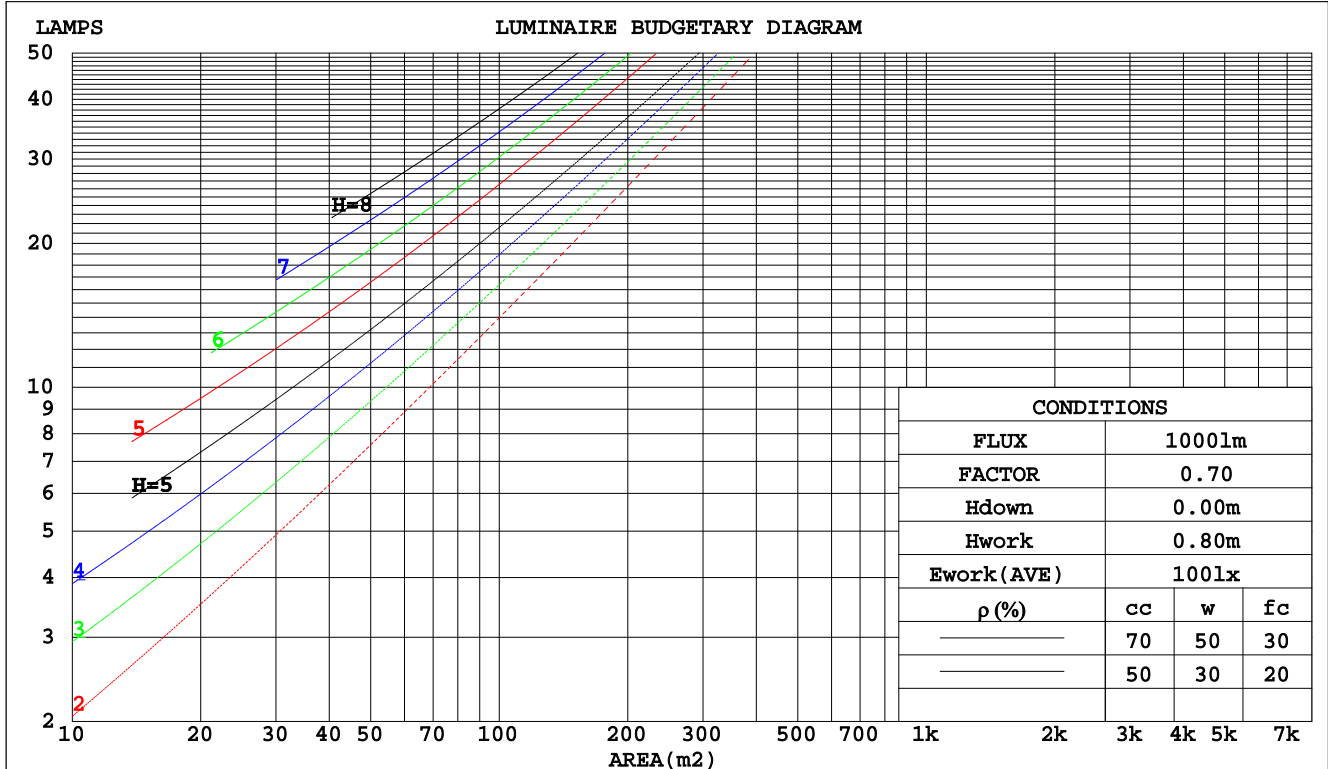
C Range: 0 - 360DEG
 C Interval: 5.0DEG
 Test Speed: HIGH
 Temperature:25DEG
 Operators:Peter
 Test Date:2020-03-26

γ Range: 0 - 90DEG
 γ Interval: 0.5DEG
 Test System:EVERFINE GO-2000A_V1 SYSTEM V2.0.290
 Humidity:50%
 Test Distance:8.900m [K=1.0000]
 Remarks:

CU AND LUMINAIRE BUDGETARY ESTIMATE DIAGRAM

Test:U:119.9V I:0.7714A P:92.52W PF:0.9931 Lamp Flux:12523.4x1 lm		
NAME: ASD-LSF5-8A90AC-PRM (90W 5000K)	TYPE:LED	WEIGHT:
SPEC.:	DIM.: 2438*66*68mm	SERIAL No.:
MFR.: ASD lighting corp.	SUR.:2438*66*68mm	PROTECTION ANGLE:

pcc	80%			70%			50%			30%			10%			0
pw	50%	30%	10%	50%	30%	10%	50%	30%	10%	50%	30%	10%	50%	30%	10%	0
pfc	20%			20%			20%			20%			20%			0
RCR	RCR:Room Cavity Ratio						Coefficients of Utilization(CU)									
0.0	1.19	1.19	1.19	1.16	1.16	1.16	1.11	1.11	1.11	1.06	1.06	1.06	1.02	1.02	1.02	1.00
1.0	1.02	.97	.93	.90	.95	.91	.95	.92	.89	.91	.89	.86	.88	.85	.83	.81
2.0	.88	.81	.75	.87	.80	.74	.83	.77	.72	.80	.75	.71	.76	.73	.69	.67
3.0	.77	.69	.62	.76	.68	.61	.73	.66	.60	.70	.64	.59	.67	.62	.58	.56
4.0	.69	.59	.52	.67	.59	.52	.65	.57	.51	.62	.56	.51	.60	.54	.50	.48
5.0	.61	.52	.45	.60	.51	.45	.58	.50	.44	.56	.49	.44	.54	.48	.43	.41
6.0	.55	.46	.39	.54	.45	.39	.52	.45	.39	.51	.44	.38	.49	.43	.38	.36
7.0	.50	.41	.35	.49	.41	.35	.48	.40	.34	.46	.39	.34	.45	.39	.34	.32
8.0	.46	.37	.31	.45	.37	.31	.44	.36	.31	.42	.35	.30	.41	.35	.30	.28
9.0	.42	.34	.28	.41	.33	.28	.40	.33	.28	.39	.32	.27	.38	.32	.27	.25
10.0	.39	.31	.25	.38	.30	.25	.37	.30	.25	.36	.30	.25	.35	.29	.25	.23



C Range: 0 - 360DEG
 C Interval: 5.0DEG
 Test Speed: HIGH
 Temperature:25DEG
 Operators:Peter
 Test Date:2020-03-26

γ Range: 0 - 90DEG
 γ Interval: 0.5DEG
 Test System:EVERFINE GO-2000A_V1 SYSTEM V2.0.290
 Humidity:50%
 Test Distance:8.900m [K=1.0000]
 Remarks:

WEC AND CCEC

Test:U:119.9V I:0.7714A P:92.52W PF:0.9931 Lamp Flux:12523.4x1 lm		
NAME: ASD-LSF5-8A90AC-PRM (90W 5000K)	TYPE:LED	WEIGHT:
SPEC.:	DIM.: 2438*66*68mm	SERIAL No.:
MFR.:ASD lighting corp.	SUR.:2438*66*68mm	PROTECTION ANGLE:

ρcc	80%			70%			50%			30%			10%			0
ρw	50%	30%	10%	50%	30%	10%	50%	30%	10%	50%	30%	10%	50%	30%	10%	0
ρfc	20%			20%			20%			20%			20%			0
RCR	RCR:Room Cavity Ratio						Wall Exitance Coefficients(WEC)									
0.0																
1.0	.344	.196	.062	.337	.192	.061	.324	.186	.059	.312	.180	.058	.300	.174	.056	
2.0	.311	.170	.052	.305	.168	.052	.293	.163	.051	.282	.158	.049	.272	.154	.048	
3.0	.282	.150	.045	.277	.148	.045	.266	.144	.044	.256	.141	.043	.247	.137	.042	
4.0	.258	.134	.039	.253	.132	.039	.243	.129	.039	.235	.126	.038	.227	.123	.038	
5.0	.236	.120	.035	.232	.119	.035	.224	.116	.034	.216	.114	.034	.209	.112	.034	
6.0	.218	.109	.031	.214	.108	.031	.207	.106	.031	.200	.104	.031	.194	.102	.030	
7.0	.202	.100	.028	.199	.099	.028	.192	.097	.028	.186	.095	.028	.180	.094	.028	
8.0	.188	.092	.026	.185	.091	.026	.179	.090	.026	.174	.088	.025	.169	.087	.025	
9.0	.176	.085	.024	.173	.084	.024	.168	.083	.024	.163	.082	.023	.159	.081	.023	
10.0	.165	.079	.022	.163	.079	.022	.158	.077	.022	.154	.076	.022	.149	.075	.022	

ρcc	80%			70%			50%			30%			10%			0
ρw	50%	30%	10%	50%	30%	10%	50%	30%	10%	50%	30%	10%	50%	30%	10%	0
ρfc	20%			20%			20%			20%			20%			0
RCR	RCR:Room Cavity Ratio						Ceiling Cavity Exitance Coefficients(CCEC)									
0.0	.190	.190	.190	.163	.163	.163	.111	.111	.111	.064	.064	.064	.020	.020	.020	
1.0	.183	.156	.132	.156	.134	.113	.107	.092	.078	.062	.053	.046	.020	.017	.015	
2.0	.175	.132	.096	.150	.113	.083	.103	.079	.058	.059	.046	.034	.019	.015	.011	
3.0	.167	.114	.073	.143	.099	.063	.098	.069	.044	.057	.040	.026	.018	.013	.009	
4.0	.159	.101	.057	.136	.087	.050	.094	.061	.035	.054	.036	.021	.017	.012	.007	
5.0	.151	.091	.046	.130	.079	.040	.089	.055	.028	.052	.032	.017	.017	.011	.006	
6.0	.144	.082	.039	.124	.071	.034	.085	.050	.024	.049	.029	.014	.016	.010	.005	
7.0	.137	.076	.033	.118	.066	.029	.081	.046	.020	.047	.027	.012	.015	.009	.004	
8.0	.130	.070	.028	.112	.061	.025	.077	.042	.018	.045	.025	.010	.015	.008	.003	
9.0	.124	.065	.025	.107	.056	.022	.074	.040	.015	.043	.023	.009	.014	.008	.003	
10.0	.118	.060	.022	.102	.053	.019	.071	.037	.014	.041	.022	.008	.013	.007	.003	

C Range: 0 - 360DEG
 C Interval: 5.0DEG
 Test Speed: HIGH
 Temperature:25DEG
 Operators:Peter
 Test Date:2020-03-26

γ Range: 0 - 90DEG
 γ Interval: 0.5DEG
 Test System:EVERFINE GO-2000A_V1 SYSTEM V2.0.290
 Humidity:50%
 Test Distance:8.900m [K=1.0000]
 Remarks:

UGR(Unified Glare Rating) Table

Test:U:119.9V I:0.7714A P:92.52W PF:0.9931 Lamp Flux:12523.4x1 lm										
NAME: ASD-LSF5-8A90AC-PRM (90W 5000K)					TYPE:LED			WEIGHT:		
SPEC.:					DIM.: 2438*66*68mm			SERIAL No.:		
MFR.:ASD lighting corp.					SUR.:2438*66*68mm			PROTECTION ANGLE:		
ceiling/cavity	0.7	0.7	0.5	0.5	0.3	0.7	0.7	0.5	0.5	0.3
walls	0.5	0.3	0.5	0.3	0.3	0.5	0.3	0.5	0.3	0.3
working plane	0.2	0.2	0.2	0.2	0.2	0.2	0.2	0.2	0.2	0.2
Room dimensions	Viewed crosswise					Viewed endwise				
x = 2H y = 2H	23.0	24.5	23.2	24.7	24.9	24.0	25.5	24.3	25.8	26.0
3H	24.3	25.8	24.6	26.0	26.3	26.0	27.4	26.3	27.6	27.9
4H	24.8	26.2	25.2	26.5	26.7	26.9	28.3	27.2	28.6	28.8
6H	25.2	26.5	25.5	26.8	27.0	27.9	29.2	28.3	29.5	29.8
8H	25.3	26.5	25.6	26.8	27.1	28.5	29.8	28.8	30.0	30.3
12H	25.3	26.5	25.7	26.8	27.1	29.1	30.3	29.5	30.6	30.9
4H 2H	23.8	25.2	24.1	25.4	25.7	24.6	25.9	24.9	26.2	26.5
3H	25.4	26.6	25.7	26.9	27.2	26.7	28.0	27.1	28.3	28.6
4H	26.0	27.2	26.4	27.5	27.8	27.9	29.0	28.3	29.3	29.7
6H	26.5	27.5	26.9	27.9	28.3	29.1	30.1	29.5	30.5	30.8
8H	26.7	27.6	27.1	28.0	28.4	29.8	30.7	30.2	31.1	31.5
12H	26.8	27.6	27.2	28.0	28.4	30.5	31.4	31.0	31.8	32.2
8H 4H	26.6	27.6	27.0	27.9	28.3	28.2	29.1	28.6	29.5	29.9
6H	27.4	28.2	27.8	28.6	29.0	29.7	30.5	30.1	30.9	31.3
8H	27.7	28.4	28.1	28.8	29.2	30.5	31.2	31.0	31.7	32.1
12H	27.9	28.5	28.3	28.9	29.4	31.5	32.1	32.0	32.6	33.1
12H 4H	26.8	27.6	27.2	28.0	28.4	28.2	29.1	28.6	29.5	29.9
6H	27.6	28.3	28.1	28.8	29.2	29.8	30.5	30.2	30.9	31.4
8H	28.0	28.7	28.5	29.1	29.6	30.7	31.3	31.2	31.8	32.3
Variations with the observer position at spacings:										
S = 1.0H	+ 0.2 / - 0.2					+ 0.1 / - 0.1				
1.5H	+ 0.2 / - 0.2					+ 0.2 / - 0.3				
2.0H	+ 0.1 / - 0.2					+ 0.2 / - 0.3				

CIE Pub.117 Corrected 12523 lm Total Lamp Luminous Flux. (8log(F/F0) = 8.8)

C Range: 0 - 360DEG
 C Interval: 5.0DEG
 Test Speed: HIGH
 Temperature:25DEG
 Operators:Peter
 Test Date:2020-03-26

γ Range: 0 - 90DEG
 γ Interval: 0.5DEG
 Test System:EVERFINE GO-2000A_V1 SYSTEM V2.0.290
 Humidity:50%
 Test Distance:8.900m [K=1.0000]
 Remarks:

UTILIZATION FACTORS TABLE

Test:U:119.9V I:0.7714A P:92.52W PF:0.9931 Lamp Flux:12523.4x1 lm		
NAME: ASD-LSF5-8A90AC-PRM (90W 5000K)	TYPE:LED	WEIGHT:
SPEC.:	DIM.: 2438*66*68mm	SERIAL No.:
MFR.: ASD lighting corp.	SUR.:2438*66*68mm	PROTECTION ANGLE:

REFLECTANCE										
Ceiling	0.8	0.8	0.8	0.7	0.7	0.7	0.5	0.5	0.5	0
Walls	0.7	0.5	0.3	0.7	0.5	0.3	0.7	0.5	0.3	0
Working plane	0.2	0.2	0.2	0.2	0.2	0.2	0.2	0.2	0.2	0
ROOM INDEX	UTILIZATION FACTORS(PERCENT) $k(RI) \times RCR = 5$									
k = 0.60	57	45	38	56	45	38	55	44	37	31
0.80	66	54	47	65	54	47	64	53	46	39
1.00	75	63	55	73	62	55	71	64	55	47
1.25	81	71	63	80	70	63	77	68	62	54
1.50	86	76	69	85	75	68	82	73	67	59
2.00	93	84	77	91	83	76	88	81	75	67
2.50	97	89	82	95	87	81	91	85	80	71
3.00	101	93	87	98	92	86	94	89	84	75
4.00	105	99	93	102	97	92	98	93	89	80
5.00	107	102	97	105	100	96	100	96	93	83
ROOM INDEX	UF(total)									Direct
According to DIN EN 13032-2 2004			Suspended				SHRNOM = 1.25			

C Range: 0 - 360DEG
 C Interval: 5.0DEG
 Test Speed: HIGH
 Temperature:25DEG
 Operators:Peter
 Test Date:2020-03-26

γ Range: 0 - 90DEG
 γ Interval: 0.5DEG
 Test System:EVERFINE GO-2000A_V1 SYSTEM V2.0.290
 Humidity:50%
 Test Distance:8.900m [K=1.0000]
 Remarks:

ISOCANDELA DIAGRAM

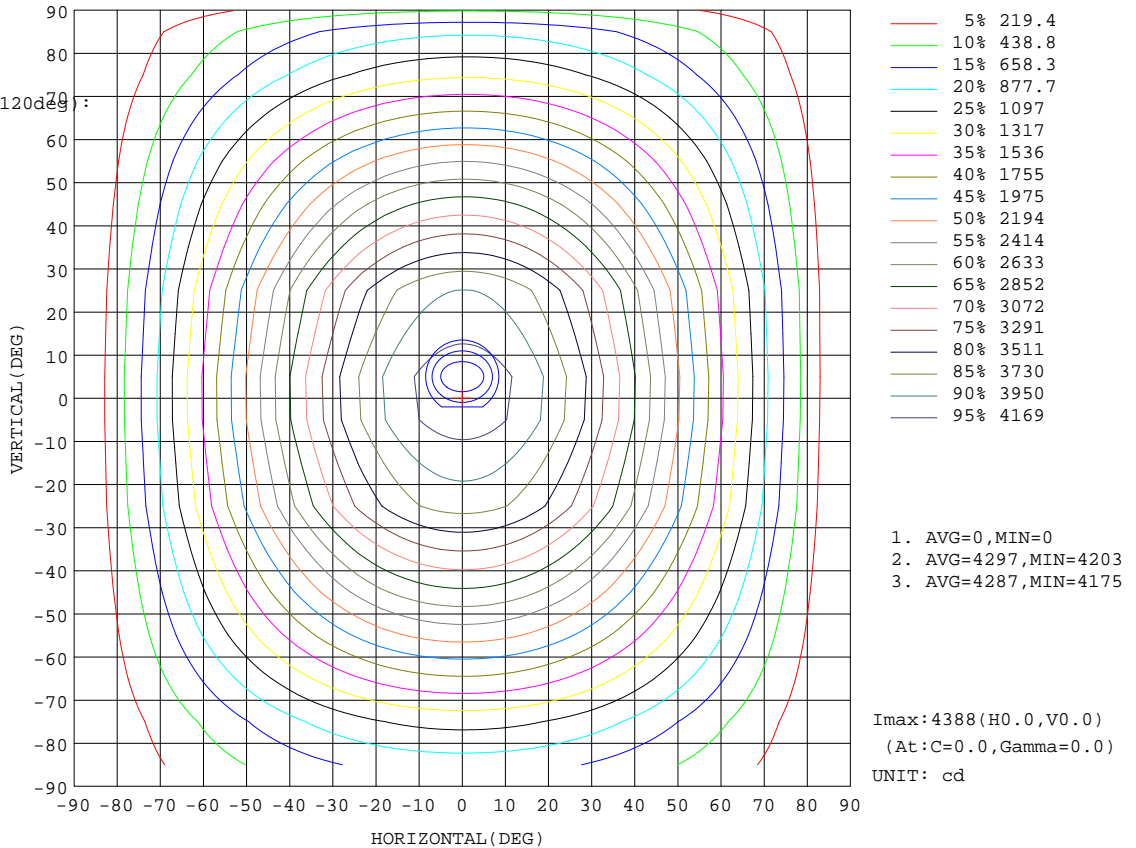
Test:U:119.9V I:0.7714A P:92.52W PF:0.9931 Lamp Flux:12523.4x1 lm		
NAME: ASD-LSF5-8A90AC-PRM (90W 5000K)	TYPE:LED	WEIGHT:
SPEC.:	DIM.: 2438*66*68mm	SERIAL No.:
MFR.: ASD lighting corp.	SUR.:2438*66*68mm	PROTECTION ANGLE:

Conical surface Flux(90deg):

6409.1 lm
 %lum = 51.2%
 %lamp = 51.2%

Conical surface Flux(120deg):

9361.1 lm
 %lum = 74.7%
 %lamp = 74.7%

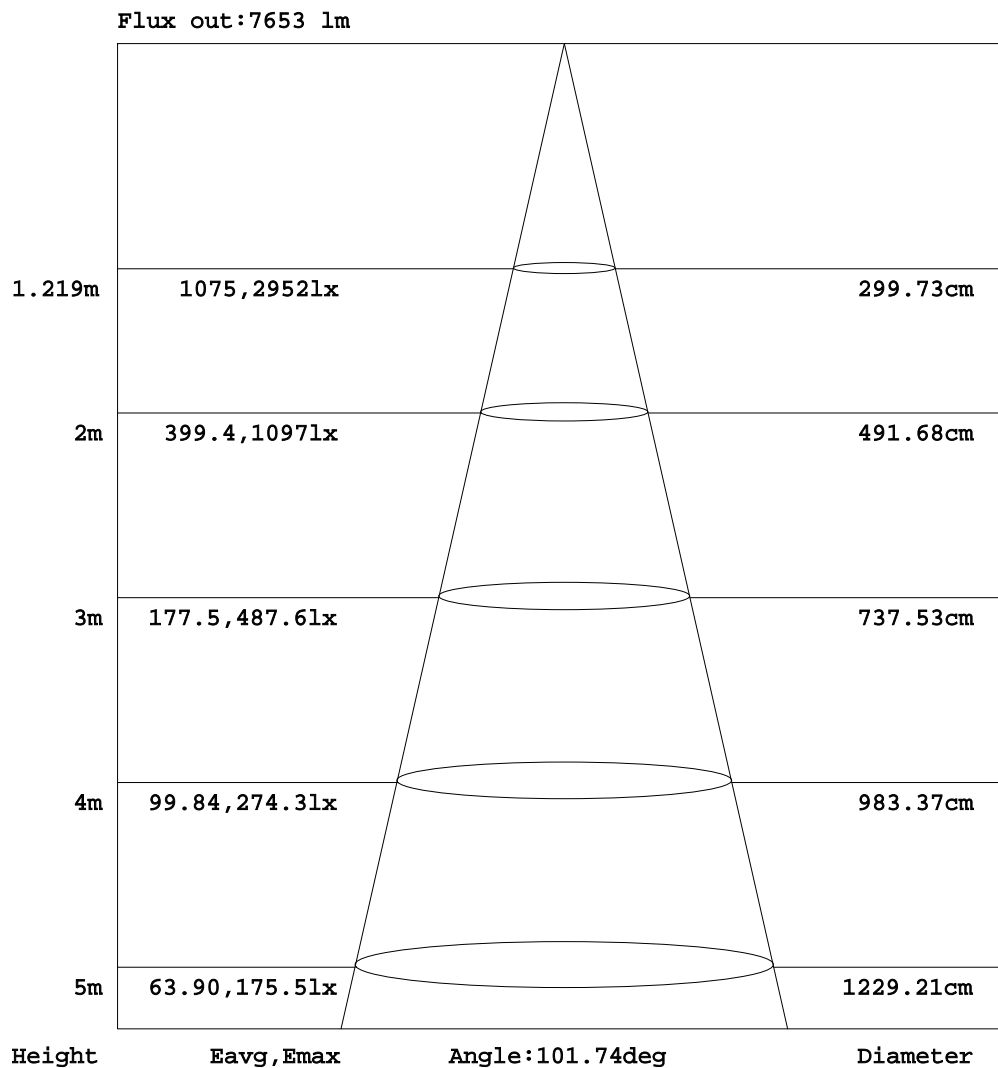


C Range: 0 - 360DEG
 C Interval: 5.0DEG
 Test Speed: HIGH
 Temperature: 25DEG
 Operators: Peter
 Test Date: 2020-03-26

γ Range: 0 - 90DEG
 γ Interval: 0.5DEG
 Test System: EVERFINE GO-2000A_V1 SYSTEM V2.0.290
 Humidity: 50%
 Test Distance: 8.900m [K=1.0000]
 Remarks:

AAI Figure

Test:U:119.9V I:0.7714A P:92.52W PF:0.9931 Lamp Flux:12523.4x1 lm		
NAME: ASD-LSF5-8A90AC-PRM (90W 5000K)	TYPE:LED	WEIGHT:
SPEC.:	DIM.: 2438*66*68mm	SERIAL No.:
MFR.: ASD lighting corp.	SUR.:2438*66*68mm	PROTECTION ANGLE:



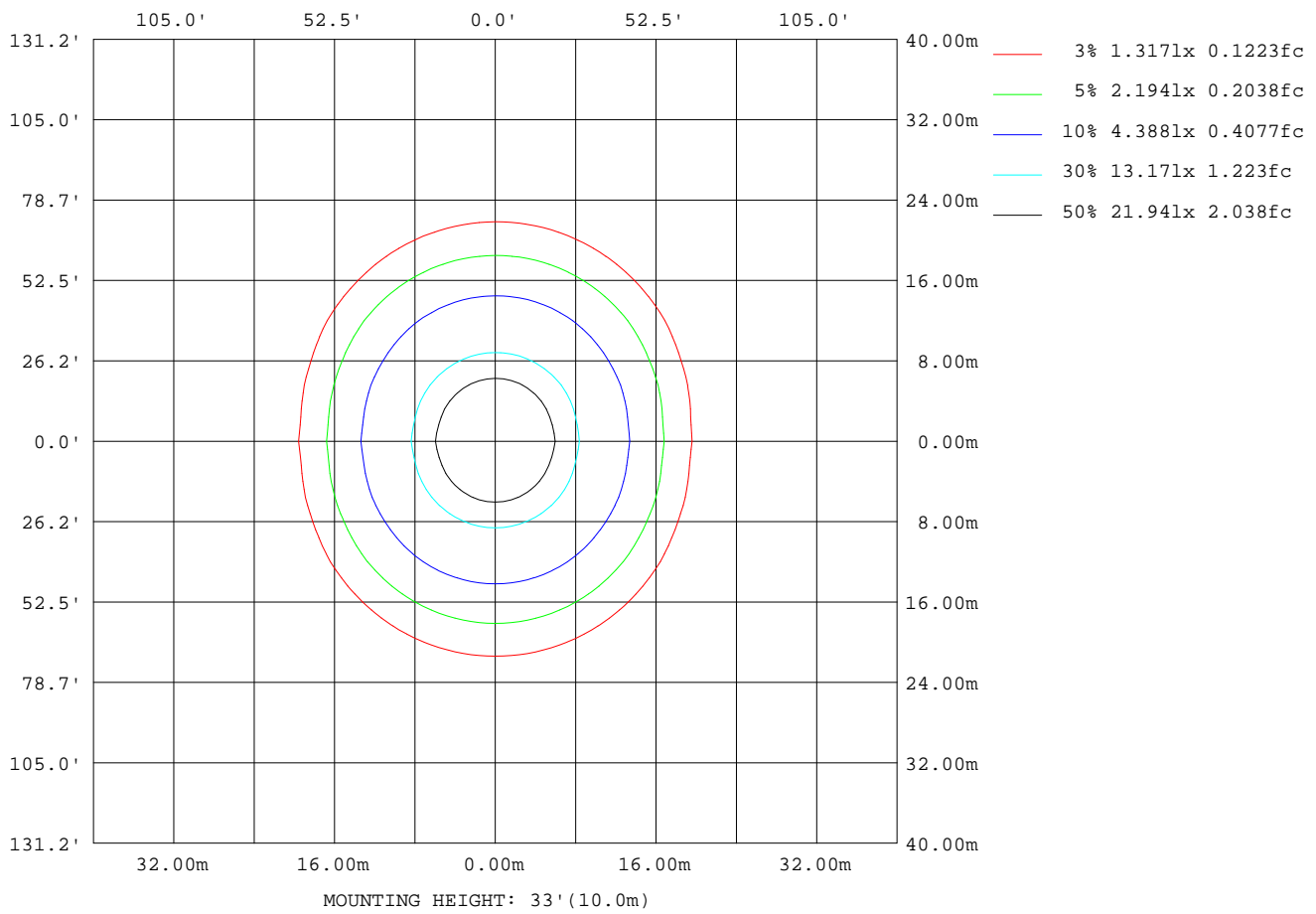
Note:The Curves indicate the illuminated area and the average illumination when the luminaire is at different distance.

C Range: 0 - 360DEG
 C Interval: 5.0DEG
 Test Speed: HIGH
 Temperature:25DEG
 Operators:Peter
 Test Date:2020-03-26

γ Range: 0 - 90DEG
 γ Interval: 0.5DEG
 Test System:EVERFINE GO-2000A_V1 SYSTEM V2.0.290
 Humidity:50%
 Test Distance:8.900m [K=1.0000]
 Remarks:

ISOLUX DIAGRAM

Test:U:119.9V I:0.7714A P:92.52W PF:0.9931 Lamp Flux:12523.4x1 lm		
NAME: ASD-LSF5-8A90AC-PRM (90W 5000K)	TYPE:LED	WEIGHT:
SPEC.:	DIM.: 2438*66*68mm	SERIAL No.:
MFR.:ASD lighting corp.	SUR.:2438*66*68mm	PROTECTION ANGLE:



C Range: 0 - 360DEG
 C Interval: 5.0DEG
 Test Speed: HIGH
 Temperature:25DEG
 Operators:Peter
 Test Date:2020-03-26

γ Range: 0 - 90DEG
 γ Interval: 0.5DEG
 Test System:EVERFINE GO-2000A_V1 SYSTEM V2.0.290
 Humidity:50%
 Test Distance:8.900m [K=1.0000]
 Remarks:

LED Avg.L Report

Test:U:119.9V I:0.7714A P:92.52W PF:0.9931 Lamp Flux:12523.4x1 lm		
NAME: ASD-LSF5-8A90AC-PRM (90W 5000K)	TYPE:LED	WEIGHT:
SPEC.:	DIM.: 2438*66*68mm	SERIAL No.:
MFR.: ASD lighting corp.	SUR.:2438*66*68mm	PROTECTION ANGLE:

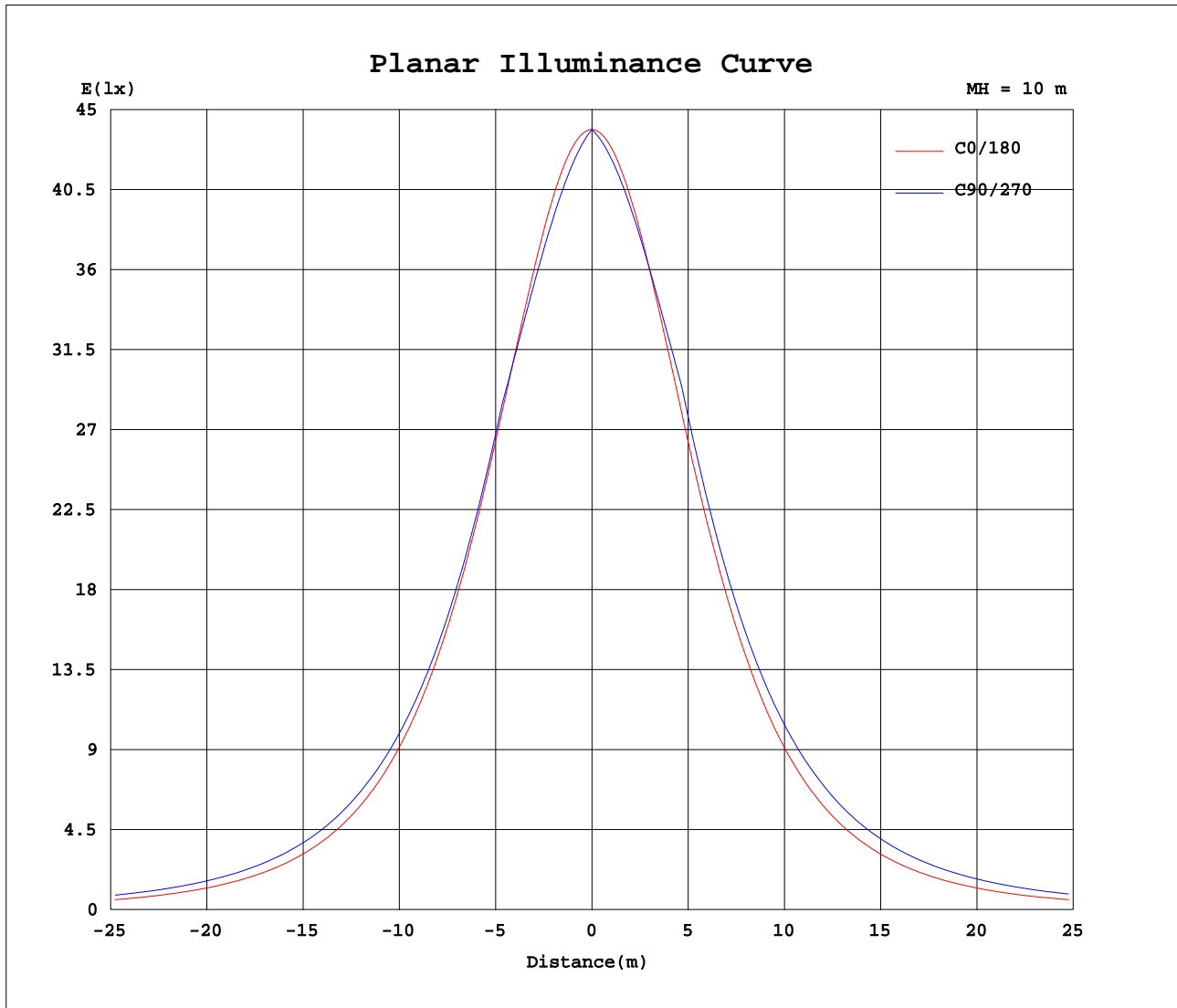
AvgL	cd/m2
L_0~180(65)av	18584
L_0~180(75)av	15352
L_0~180(85)av	10096
L_90~270(65)av	26253
L_90~270(75)av	29457
L_90~270(85)av	57378
L_45(65)av	23122
L_45(75)av	24470
L_45(85)av	41008

Standard: GB/T 29293-2012

C Range: 0 - 360DEG
C Interval: 5.0DEG
Test Speed: HIGH
Temperature:25DEG
Operators:Peter
Test Date:2020-03-26

γ Range: 0 - 90DEG
 γ Interval: 0.5DEG
Test System:EVERFINE GO-2000A_V1 SYSTEM V2.0.290
Humidity:50%
Test Distance:8.900m [K=1.0000]
Remarks:

Planar Illuminance Curve



C Range: 0 - 360DEG
 C Interval: 5.0DEG
 Test Speed: HIGH
 Temperature: 25DEG
 Operators: Peter
 Test Date: 2020-03-26

γ Range: 0 - 90DEG
 γ Interval: 0.5DEG
 Test System: EVERFINE GO-2000A_V1 SYSTEM V2.0.290
 Humidity: 50%
 Test Distance: 8.900m [K=1.0000]
 Remarks:

LUMINOUS DISTRIBUTION INTENSITY DATA

Test:U:119.9V I:0.7714A P:92.52W PF:0.9931 Lamp Flux:12523.4x1 lm		
NAME: ASD-LSF5-8A90AC-PRM (90W 5000K)	TYPE:LED	WEIGHT:
SPEC.:	DIM.: 2438*66*68mm	SERIAL No.:
MFR.:ASD lighting corp.	SUR.:2438*66*68mm	PROTECTION ANGLE:

Table--1

UNIT: cd

C(DEG) γ (DEG)	0	5	10	15	20	25	30	35	40	45	50	55	60	65	70	75	80	85	90
0	4388	4388	4388	4388	4388	4388	4388	4388	4388	4388	4388	4388	4388	4388	4388	4388	4388	4388	4388
5	4363	4354	4344	4336	4327	4320	4313	4307	4301	4296	4291	4287	4284	4281	4278	4277	4275	4274	4274
10	4285	4267	4250	4235	4221	4210	4200	4191	4184	4179	4174	4170	4167	4165	4163	4162	4161	4161	4160
15	4156	4130	4107	4088	4073	4061	4052	4045	4041	4039	4038	4039	4040	4042	4043	4045	4046	4046	4046
20	3981	3948	3921	3901	3886	3876	3872	3871	3874	3880	3887	3895	3904	3912	3919	3925	3929	3932	3932
25	3762	3724	3695	3675	3665	3662	3665	3674	3688	3704	3722	3741	3759	3777	3792	3804	3812	3817	3818
30	3506	3465	3437	3422	3417	3423	3438	3459	3486	3516	3548	3571	3568	3567	3567	3567	3566	3566	3566
35	3219	3176	3151	3143	3148	3166	3195	3232	3275	3287	3286	3288	3292	3298	3303	3308	3312	3313	3313
40	2910	2867	2846	2845	2861	2893	2943	2980	2979	2983	2992	3004	3017	3029	3040	3050	3057	3060	3061
45	2587	2545	2530	2540	2571	2619	2650	2652	2665	2682	2701	2722	2743	2761	2778	2792	2802	2806	2808
50	2256	2217	2211	2232	2278	2314	2318	2333	2355	2386	2415	2444	2472	2497	2518	2535	2547	2553	2556
55	1924	1889	1891	1927	1976	1978	1996	2025	2060	2098	2137	2173	2201	2224	2244	2260	2271	2278	2279
60	1593	1562	1576	1629	1638	1657	1690	1731	1777	1820	1853	1885	1915	1942	1964	1982	1994	2001	2003
65	1266	1241	1269	1301	1317	1354	1402	1451	1490	1528	1567	1602	1635	1663	1686	1705	1718	1725	1727
70	945	929	973	983	1021	1075	1119	1163	1207	1250	1290	1327	1360	1388	1411	1429	1442	1449	1451
75	640	635	661	697	750	798	847	895	941	984	1023	1059	1091	1117	1139	1155	1167	1173	1175
80	361	369	395	445	498	549	599	645	689	738	784	827	865	897	924	945	960	969	971
85	140	152	194	239	288	346	401	453	502	549	592	632	667	697	722	742	757	765	768
90	37.4	61.9	87.2	120	161	202	244	286	327	367	405	440	471	499	522	540	554	562	565

C Range: 0 - 360DEG γ Range: 0 - 90DEG
 C Interval: 5.0DEG γ Interval: 0.5DEG
 Test Speed: HIGH Test System:EVERFINE GO-2000A_V1 SYSTEM V2.0.290
 Temperature:25DEG Humidity:50%
 Operators:Peter Test Distance:8.900m [K=1.0000]
 Test Date:2020-03-26 Remarks:

LUMINOUS DISTRIBUTION INTENSITY DATA

Test:U:119.9V I:0.7714A P:92.52W PF:0.9931 Lamp Flux:12523.4x1 lm		
NAME: ASD-LSF5-8A90AC-PRM (90W 5000K)	TYPE:LED	WEIGHT:
SPEC.:	DIM.: 2438*66*68mm	SERIAL No.:
MFR.: ASD lighting corp.	SUR.:2438*66*68mm	PROTECTION ANGLE:

Table--2

UNIT: cd

C(DEG)\γ (DEG)	95	100	105	110	115	120	125	130	135	140	145	150	155	160	165	170	175	180	185
0	4388	4388	4388	4388	4388	4388	4388	4388	4388	4388	4388	4388	4388	4388	4388	4388	4388	4388	4388
5	4274	4275	4276	4277	4279	4282	4285	4289	4293	4298	4303	4310	4316	4324	4332	4341	4350	4360	4353
10	4160	4160	4160	4160	4161	4164	4166	4169	4173	4179	4185	4194	4204	4215	4228	4243	4260	4279	4265
15	4045	4043	4041	4039	4037	4034	4032	4030	4030	4032	4037	4042	4051	4064	4080	4099	4122	4149	4128
20	3930	3926	3921	3913	3904	3895	3885	3876	3868	3863	3859	3860	3864	3874	3889	3910	3938	3971	3946
25	3815	3808	3798	3783	3767	3748	3728	3708	3690	3673	3661	3654	3652	3658	3669	3687	3715	3753	3724
30	3564	3563	3560	3558	3556	3555	3556	3531	3502	3474	3450	3424	3408	3402	3407	3424	3453	3496	3463
35	3311	3308	3302	3295	3287	3280	3275	3273	3276	3256	3212	3177	3148	3132	3128	3139	3165	3210	3176
40	3058	3053	3044	3033	3019	3007	2993	2982	2967	2960	2959	2922	2879	2848	2835	2839	2860	2904	2870
45	2805	2798	2787	2772	2754	2735	2714	2688	2667	2649	2637	2635	2607	2556	2527	2518	2534	2577	2544
50	2552	2544	2531	2513	2495	2465	2436	2405	2374	2345	2325	2304	2301	2264	2219	2199	2208	2248	2217
55	2276	2268	2256	2239	2221	2196	2167	2130	2091	2055	2015	1988	1966	1963	1916	1882	1880	1917	1888
60	2000	1991	1977	1959	1936	1909	1879	1847	1817	1772	1728	1683	1648	1630	1620	1568	1555	1586	1562
65	1723	1715	1700	1682	1656	1628	1595	1560	1523	1485	1448	1398	1350	1312	1294	1263	1235	1261	1242
70	1447	1438	1424	1406	1381	1352	1319	1282	1242	1203	1159	1116	1074	1020	980	967	925	942	930
75	1171	1163	1150	1132	1109	1082	1050	1014	975	933	888	842	796	751	698	660	632	638	636
80	968	958	942	920	892	859	820	777	728	679	637	592	545	497	449	400	371	361	372
85	765	757	743	723	698	667	632	593	550	503	453	400	344	287	241	199	158	143	157
90	563	556	544	526	504	478	448	414	377	338	298	256	214	171	129	94.2	67.7	57.1	59.1

C Range: 0 - 360DEG
 C Interval: 5.0DEG
 Test Speed: HIGH
 Temperature:25DEG
 Operators:Peter
 Test Date:2020-03-26

γ Range: 0 - 90DEG
 γ Interval: 0.5DEG
 Test System:EVERFINE GO-2000A_V1 SYSTEM V2.0.290
 Humidity:50%
 Test Distance:8.900m [K=1.0000]
 Remarks:

LUMINOUS DISTRIBUTION INTENSITY DATA

Table with 3 columns: Test info, Name/Type, and Weight/Serial/Protection Angle.

Table--3

UNIT: cd

Main data table with columns for C (DEG) and gamma (DEG) and a grid of intensity values.

C Range: 0 - 360DEG
C Interval: 5.0DEG
Test Speed: HIGH
Temperature: 25DEG
Operators: Peter
Test Date: 2020-03-26

gamma Range: 0 - 90DEG
gamma Interval: 0.5DEG
Test System: EVERFINE GO-2000A_V1 SYSTEM V2.0.290
Humidity: 50%
Test Distance: 8.900m [K=1.0000]
Remarks:

LUMINOUS DISTRIBUTION INTENSITY DATA

Test:U:119.9V I:0.7714A P:92.52W PF:0.9931 Lamp Flux:12523.4x1 lm		
NAME: ASD-LSF5-8A90AC-PRM (90W 5000K)	TYPE:LED	WEIGHT:
SPEC.:	DIM.: 2438*66*68mm	SERIAL No.:
MFR.: ASD lighting corp.	SUR.:2438*66*68mm	PROTECTION ANGLE:

Table--4

UNIT: cd

C (DEG) \ γ (DEG)	285	290	295	300	305	310	315	320	325	330	335	340	345	350	355				
0	4388	4388	4388	4388	4388	4388	4388	4388	4388	4388	4388	4388	4388	4388	4388				
5	4303	4304	4305	4307	4309	4312	4315	4318	4322	4326	4331	4337	4343	4349	4356				
10	4214	4214	4214	4214	4214	4215	4217	4219	4222	4227	4233	4240	4249	4259	4271				
15	4123	4119	4115	4110	4105	4100	4095	4092	4091	4092	4094	4100	4109	4121	4137				
20	4029	4020	4009	3996	3982	3968	3955	3942	3931	3924	3920	3921	3927	3939	3957				
25	3934	3918	3898	3874	3850	3823	3795	3770	3747	3729	3715	3707	3707	3716	3734				
30	3701	3700	3698	3698	3698	3666	3624	3583	3544	3511	3485	3466	3459	3462	3477				
35	3443	3436	3430	3421	3413	3407	3404	3384	3329	3277	3234	3202	3183	3178	3190				
40	3184	3174	3160	3145	3129	3112	3099	3088	3083	3032	2970	2920	2888	2875	2881				
45	2927	2913	2893	2871	2846	2821	2796	2773	2754	2741	2697	2633	2586	2561	2560				
50	2670	2652	2629	2602	2570	2535	2499	2464	2431	2407	2394	2344	2281	2243	2233				
55	2391	2375	2355	2330	2300	2258	2213	2167	2123	2084	2056	2043	1978	1925	1905				
60	2107	2089	2066	2038	2006	1972	1935	1886	1831	1779	1735	1704	1683	1612	1579				
65	1824	1805	1781	1751	1716	1678	1637	1594	1552	1494	1434	1385	1355	1308	1260				
70	1542	1524	1500	1470	1435	1395	1352	1305	1257	1208	1159	1092	1040	1016	950				
75	1262	1245	1222	1194	1161	1122	1079	1032	982	929	875	822	757	705	660				
80	1037	1016	989	956	917	873	825	775	726	674	619	562	504	442	398				
85	819	798	772	741	704	663	617	569	517	462	404	344	288	233	179				
90	601	582	557	528	494	457	416	373	328	283	236	190	146	102	69.0				

C Range: 0 - 360DEG γ Range: 0 - 90DEG
 C Interval: 5.0DEG γ Interval: 0.5DEG
 Test Speed: HIGH Test System:EVERFINE GO-2000A_V1 SYSTEM V2.0.290
 Temperature:25DEG Humidity:50%
 Operators:Peter Test Distance:8.900m [K=1.0000]
 Test Date:2020-03-26 Remarks: