



# LED SEAMLESS VAPOR PROOF FIXTURE

► **DESIGN** -LED SEAMLESS VAPOR PROOF FIXTURE has a waterproof polycarbonate body with a frosted lens, making this fixture impact resistant. Design of the fixture allows to connect multiple fixtures together. Comes with a 4ft cord to make the installation process easier. It is designed to operate on 120-277V circuits with a 0-10V dimmable driver.

► **BATTERY BACK-UP**- The built-in battery back-up provide 90 minutes of power in case of emergency.

► **COLOR AND POWER SELECTABLE**- You can choose either a 3,500K neutral white, 4,000K cool white or 5,000K daylight color temperature, and change the power with a simple switch.

► Surge protection 6kV protects the fixture from voltage spikes and current surges.

► **APPLICATION** - Perfect commercial or industrial solution for parking garages, carports, stairwells, tunnels, car washes, and many other applications. It is also Wet Locations rated.

► **ADVANTAGES** - With calculated lifespan up to 80 000 hours, these fixtures are made to last decades under normal operation! ASD provides a 5-year limited warranty along with UL and DLC Standard certifications to guarantee top quality products and safety!

|                |  |
|----------------|--|
| Catalog number |  |
| Notes          |  |
| Type           |  |



| Model                                 | Type | Watts      | Voltage   | Dimmable | Lumens          | CCT                        | Dimensions (LxWxH)           | Pre-installed       |
|---------------------------------------|------|------------|-----------|----------|-----------------|----------------------------|------------------------------|---------------------|
| ASD-LVP2SM-2A28AC                     | 2 ft | 16/24/28W  | 120-277 V | 0-10 V   | up to 3,019 lm  | 3CCT (3,500/4,000/5,000 K) | 23-9/16" x 3-9/16" x 3-3/16" |                     |
| ASD-LVP2SM-4A56AC                     | 4 ft | 32/48/56W  | 120-277 V | 0-10 V   | up to 7,253 lm  | 3CCT (3,500/4,000/5,000 K) | 48-1/8" x 3-9/16" x 3-3/16"  | -                   |
| ASD-LVP2SM-8A120AC                    | 8 ft | 64/96/120W | 120-277 V | 0-10 V   | up to 17,359lm  | 3CCT (3,500/4,000/5,000 K) | 94-3/4" x 3-9/16" x 3-3/16"  | -                   |
| <b>LVP2SM-EM WITH BATTERY BACK-UP</b> |      |            |           |          |                 |                            |                              |                     |
| ASD-LVP2SM-4A56AC-10EM                | 4 ft | 32/48/56W  | 120-277 V | 0-10 V   | up to 7,140 lm  | 3CCT (3,500/4,000/5,000 K) | 48-1/8" x 3-9/16" x 3-3/16"  | Battery back-up 10W |
| ASD-LVP2SM-8A120AC-20EM               | 8 ft | 64/96/120W | 120-277 V | 0-10 V   | up to 17,325 lm | 3CCT (3,500/4,000/5,000 K) | 94-3/4" x 3-9/16" x 3-3/16"  | Battery back-up 20W |
| <b>LVP2SM WITH MOTION SENSOR</b>      |      |            |           |          |                 |                            |                              |                     |
| ASD-LVP2SM-4A56AC-MS                  | 4 ft | 32/48/56W  | 120-277 V | 0-10 V   | up to 6,330 lm  | 3CCT (3,500/4,000/5,000 K) | 47-3/16" x 3-9/16" x 3-3/16" | Motion sensor       |

For detailed luminous flux information please refer to Annex 1, page 2

## ORDERING INFORMATION

| Model                                 | UPC          | Pcs. per carton | Carton size         | Carton weight | GTIN 14        |
|---------------------------------------|--------------|-----------------|---------------------|---------------|----------------|
| ASD-LVP2SM-2A28AC                     | 810128117692 | 9               | 27.6" x 11.8" x 13" | 35.2 lbs      | 10810128117699 |
| ASD-LVP2SM-4A56AC                     | 810050735513 | 9               | 51.2" x 11.8" x 13" | 55.9 lbs      | 10810050735510 |
| ASD-LVP2SM-8A120AC                    | 810050735520 | 6               | 98" x 11.8" x 8.9"  | 58.7 lbs      | 10810050735527 |
| <b>LVP2SM-EM WITH BATTERY BACK-UP</b> |              |                 |                     |               |                |
| ASD-LVP2SM-4A56AC-10EM                | 810050735537 | 9               | 51.2" x 11.8" x 13" | 60.8 lbs      | 10810050735534 |
| ASD-LVP2SM-8A120AC-20EM               | 810050735544 | 6               | 98" x 11.8" x 8.9"  | 69.3 lbs      | 10810050735541 |
| <b>LVP2SM WITH MOTION SENSOR</b>      |              |                 |                     |               |                |
| ASD-LVP2SM-4A56AC-MS                  | 810128117685 | 9               | 51.2" x 11.8" x 13" | 57.2 lbs      | 10810128117682 |

For most up-to-date spec sheets please refer to [asd-lighting.com](http://asd-lighting.com)



# LED SEAMLESS VAPOR PROOF FIXTURE

## PRODUCT SPECIFICATIONS:

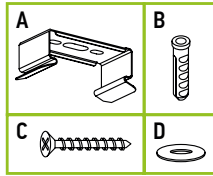
| Construction & Materials  |  | Electrical system               |                                       |         |                    |                                  |
|---|--|---------------------------------|---------------------------------------|---------|--------------------|----------------------------------|
| Housing   | PC   | Input voltage                   | 120-277 V                             |         |                    |                                  |
| Lens  | PC   | Max input current               | ASD-LVP2SM-2A28AC 0.28 A              |         |                    |                                  |
| Finish  | White  |                                 | ASD-LVP2SM-4A56AC 0.55 A              |         |                    |                                  |
| Weight  | ASD-LVP2SM-2A28AC  |                                 | ASD-LVP2SM-8A120AC 1.15 A             |         |                    |                                  |
|   | ASD-LVP2SM-4A56AC  |                                 | ASD-LVP2SM-4A56AC-10EM 0.55 A         |         |                    |                                  |
|   | ASD-LVP2SM-8A120AC                                       |                                 | ASD-LVP2SM-8A120AC-20EM 1.15 A        |         |                    |                                  |
|   | ASD-LVP2SM-4A56AC-10EM                                   |                                 | ASD-LVP2SM-4A56AC-MS 0.42 A           |         |                    |                                  |
|   | ASD-LVP2SM-8A120AC-20EM                                  | ASD-LVP2SM-2A28AC 65 A (0.75 S) |                                       |         |                    |                                  |
| ASD-LVP2SM-4A56AC-MS  | ASD-LVP2SM-4A56AC 40 A (0.46 S)                          |                                 |                                       |         |                    |                                  |
| <b>Environmental system</b>                                     |  | Inrush current (Action time)    | ASD-LVP2SM-8A120AC 80 A (0.58 S)      |         |                    |                                  |
| Work environment  | Suitable for Damp Locations, IP66                        |                                 | ASD-LVP2SM-4A56AC-10EM 80 A (0.46 S)  |         |                    |                                  |
| Operating temperature   | -40°F to 122°F (-20°C to 50°C)                           |                                 | ASD-LVP2SM-8A120AC-20EM 80 A (0.58 S) |         |                    |                                  |
| L-70 Life   | R >54,000 hrs; C > 80,000 hrs                            |                                 | ASD-LVP2SM-4A56AC-MS 65 A (0.75 S)    |         |                    |                                  |
| <b>Optical system</b>   |  | Off state power                 | 0W                                    |         |                    |                                  |
| Color temperature   | 3CCT switch (3,500/4,000/5,000 K), 5,000 K by default    | Power consumption               | ASD-LVP2SM-2A28AC 16/24/28W           |         |                    |                                  |
| CRI   | > 80   |                                 | ASD-LVP2SM-4A56AC 32/48/56W           |         |                    |                                  |
| <b>Dimming compatible controls</b>                              |  |                                 | ASD-LVP2SM-8A120AC 64/96/120W         |         |                    |                                  |
| Brand   | Leviton      Legrand      Lutron      Eaton              |                                 | ASD-LVP2SM-4A56AC-10EM 32/48/56W      |         |                    |                                  |
| Models  | IP710-DLZ/NFTV      H4FBL3PW      DVSTV-WH      DF10P-C1 |                                 | ASD-LVP2SM-8A120AC-20EM 64/96/120W    |         |                    |                                  |
|   |  |                                 | ASD-LVP2SM-4A56AC-MS 32/48/56W        |         |                    |                                  |
|   |  | Power factor                    | > 0.9                                 |         |                    |                                  |
| Model   | Watts  | 3,500 K                         | 4,000 K                               | 5,000 K | Output voltage     | ASD-LVP2SM-2A28AC 90-130 V       |
|   |  |                                 |                                       |         |                    | ASD-LVP2SM-4A56AC 93-115 V       |
|   |  |                                 |                                       |         |                    | ASD-LVP2SM-8A120AC 95-107 V      |
|   |  |                                 |                                       |         |                    | ASD-LVP2SM-4A56AC-10EM 93-115 V  |
|   |  |                                 |                                       |         |                    | ASD-LVP2SM-8A120AC-20EM 95-107 V |
|   |  |                                 |                                       |         |                    | ASD-LVP2SM-4A56AC-MS 90-130 V    |
| Model   | Watts  | 3,500 K                         | 4,000 K                               | 5,000 K | Max output current | ASD-LVP2SM-2A28AC 0.75 A         |
|   |  |                                 |                                       |         |                    | ASD-LVP2SM-4A56AC 0.46 A         |
|   |  |                                 |                                       |         |                    | ASD-LVP2SM-8A120AC 1.05 A        |
|   |  |                                 |                                       |         |                    | ASD-LVP2SM-4A56AC-10EM 0.46 A    |
|   |  |                                 |                                       |         |                    | ASD-LVP2SM-8A120AC-20EM 1.05 A   |
|   |  |                                 |                                       |         |                    | ASD-LVP2SM-4A56AC-MS 0.75 A      |
| Surge protection DM/CM 4 kV / 6 kV                              |  |                                 |                                       |         |                    |                                  |
| <b>Regular and voluntary certifications</b>                     |  |                                 |                                       |         |                    |                                  |
| 5-year limited warranty   |  |                                 |                                       |         |                    |                                  |
| DesignLights Consortium (DLC) listed (Classification: Standard) |  |                                 |                                       |         |                    |                                  |
| UL certified E473804  |  |                                 |                                       |         |                    |                                  |

## ANNEX 1

| Model                   | Watts | 3,500 K  | 4,000 K  | 5,000 K  |
|-------------------------|-------|----------|----------|----------|
| ASD-LVP2SM-2A28AC       | 16W   | 1947 lm  | 2076 lm  | 2013 lm  |
|                         | 24W   | 2714 lm  | 2957 lm  | 2801 lm  |
|                         | 28W   | 2940 lm  | 3212 lm  | 3019 lm  |
|                         | 32W   | 4706 lm  | 4719 lm  | 4471 lm  |
| ASD-LVP2SM-4A56AC       | 48W   | 6307 lm  | 6427 lm  | 6155 lm  |
|                         | 56W   | 6440 lm  | 7721 lm  | 7253 lm  |
|                         | 64W   | 9520 lm  | 9664 lm  | 9258 lm  |
| ASD-LVP2SM-8A120AC      | 96W   | 13847 lm | 14579 lm | 13773 lm |
|                         | 120W  | 17626 lm | 18168 lm | 17359 lm |
|                         | 32W   | 4755 lm  | 4607 lm  | 4772 lm  |
| ASD-LVP2SM-4A56AC-10EM  | 48W   | 6251 lm  | 6456 lm  | 6109 lm  |
|                         | 56W   | 6440 lm  | 7709 lm  | 7140 lm  |
|                         | 64W   | 9520 lm  | 9722 lm  | 9414 lm  |
|                         | 96W   | 14131 lm | 14515 lm | 14025 lm |
| ASD-LVP2SM-8A120AC-20EM | 120W  | 17666 lm | 18144 lm | 17325 lm |
|                         | 32W   | 4312 lm  | 4515 lm  | 4291 lm  |
|                         | 48W   | 5694 lm  | 6055 lm  | 5635 lm  |
| ASD-LVP2SM-4A56AC-MS    | 56W   | 6157 lm  | 6755 lm  | 6330 lm  |

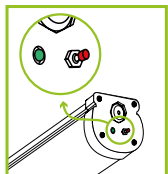
## PACKAGE CONTENTS:

| Description                      | Quantity |
|----------------------------------|----------|
| LED Seamless Vapor Proof Fixture | 1        |
| Mounting bracket (A)             | 2        |
| Mounting screws (B)              | 4        |
| Plastic anchor (C)               | 4        |
| Flat washer (D)                  | 4        |
| Box                              | 1        |



## BUILT-IN BATTERY BACK-UP INFORMATION

| Model                   | Battery capacity | Max emergency output power | EM lumens | Emergency current | Emergency operation time | Battery voltage | Full charge/discharge cycles |
|-------------------------|------------------|----------------------------|-----------|-------------------|--------------------------|-----------------|------------------------------|
| ASD-LVP2SM-4A56AC-10EM  | 3,000 mA * 4     | 10W                        | 1,246 lm  | 80 mA             | ≥ 90 minutes             | 7.4 V           | 500 cycles                   |
| ASD-LVP2SM-8A120AC-20EM | 4,000 mA * 6     | 20W                        | 2,301 lm  | 170 mAh           | ≥ 90 minutes             | 11.1 V          | 500 cycles                   |



**Test button operation:** Press test button to change from charging mode to emergency mode. Release test button to go back to the normal mode.

**Back-up mode operation:** When green light is on, backup battery is charging in AC mode. When it detects AC power outage, fixture will switch to back-up mode and indicator light will turn off.

| Specifications           | Model: BLD-CM20H-1500400                 |
|--------------------------|--|
| Input voltage            | 100-277 V 50/60 Hz                       |
| Warranty                 | 5 years                                  |
| Indicator light          | Illuminated test switch, indicator light |
| Battery                  | Li-ion                                   |
| Battery charging current | 250 mA                                   |
| Charging time            | ≥ 24 hours                               |

For most up-to-date spec sheets please refer to [asd-lighting.com](http://asd-lighting.com)



# LED SEAMLESS VAPOR PROOF FIXTURE

## INSTALLATION GUIDE

### IMPORTANT SAFETY INFORMATION:

Please read all the instructions below before installation.

- ▶ Make sure that the supply voltage corresponds to the rated product voltage.
- ▶ The product must be installed by a qualified electrician in accordance with the National Electrical Code and corresponding local codes.
- ▶ If the product is damaged, do not use it.
- ▶ All wiring connections should be capped with UL approved wire connectors.
- ▶ For surface mount there are two stainless steel brackets included.
- ▶ This fixture is intended to be connected to a properly installed and grounded UL listed junction box with suitable strain relief means for power cord. The junction box is not included, should be purchased separately.

### ⚠ WARNING

**RISK OF PERSONAL INJURY – READ and follow all WARNINGS and installation instructions.** Keep or give to the owner for future reference.

**Risk of cuts:** Wear gloves to prevent cuts or abrasions when removing from carton, handling, installing, and maintaining this product.

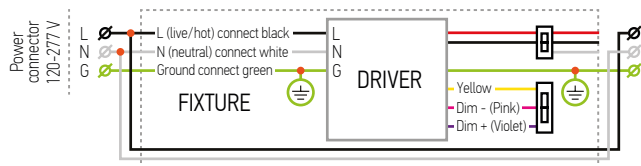
**Risk of electric shock:** This product must be installed in accordance with the applicable installation code by a person familiar with the construction and operation of the product and the hazards involved.

**Risk of Fire:** Minimum 194°F supply conductors. Consult a qualified electrician to ensure correct branch circuit conductor.

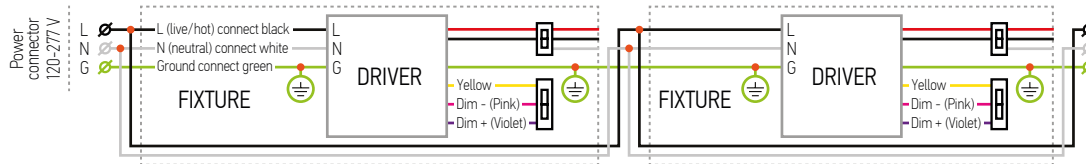
ASD® assumes no responsibility for claims arising out of improper or careless Installation or handling of this product.

### ELECTRICAL SCHEMATIC DIAGRAM:

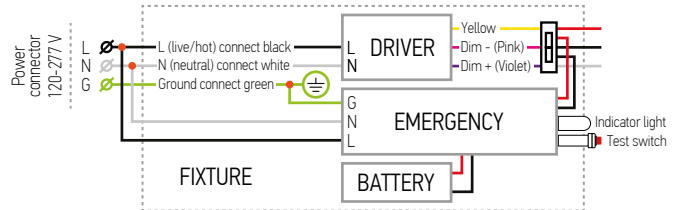
#### LVP2SM



#### LVP2SM multiple fixture connection

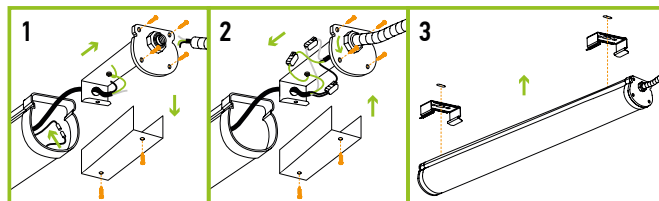


#### LVP2SM-EM with battery back-up



### INSTALLATION STEPS:

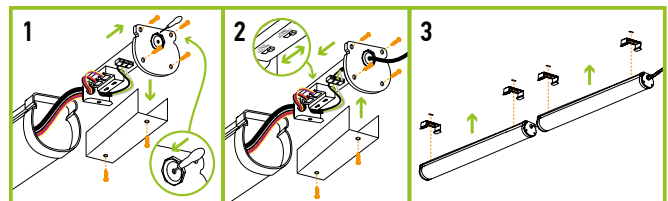
1. Remove the four screws off of the end-cap. Pull out the end-cap along with the junction box. Remove the cover of the junction box. The battery back-up will be unplugged when received, plug in battery back-up and the fixture using connector.
2. Insert the power cord into the junction box through the IP65 plug\*. Connect the wires: Black to Black, White to White, Green to Green. Choose power output and color temperature needed using the switch. Close the cover of the junction box, insert it back into the fixture, tighten the screws of the end-cap.
3. Secure the fixtures to the ceiling/wall with mounting brackets.



\* Note: plug suitable for up to 1/2" wires.

### CONNECTING MULTIPLE FIXTURES:

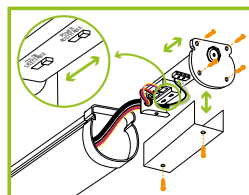
1. Remove the four screws off of the end-cap, pull out the end-cap along with the junction box, remove the cover of the junction box and remove the small cut-hole in the gasket.
2. Insert the power cord from the other fixture into the junction box. Connect the wires: Black to Black, White to White, Green to Green. Choose power output and color temperature using the switch. Close the cover of the junction box, insert it back into the fixture, tighten the screws of the end-cap.
3. Secure the fixtures to the ceiling/wall with mounting brackets.



\* Multiple fixtures with different sizes and wattages can be linked together, the total wattage must not exceed 500W (120V) / 1200W (277V).

### POWER AND COLOR TEMPERATURE SETTINGS:

Open the end-cap on the gasket side, pull out and open the junction box and use the switch to adjust power output and color temperature. Then, close junction box, slide it back into the fixture and tighten the screws on the end-cap.



For most up-to-date spec sheets please refer to [asd-lighting.com](http://asd-lighting.com)