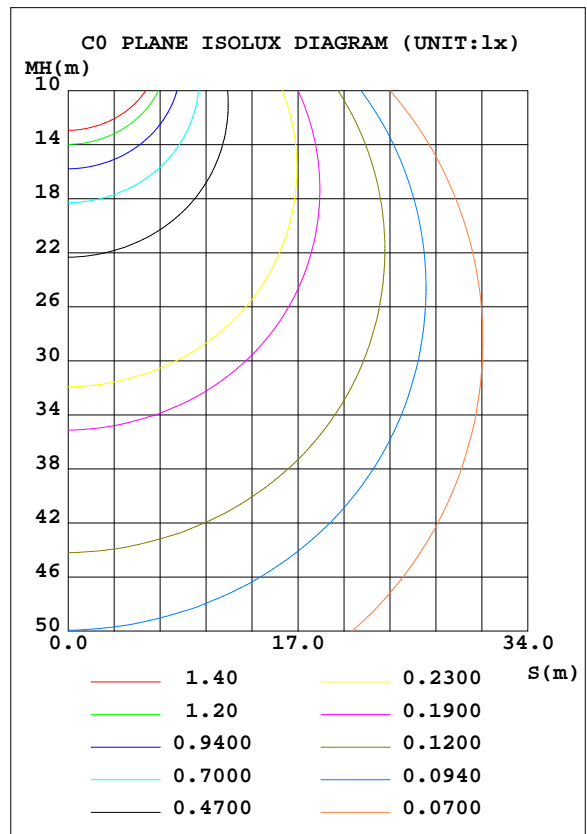
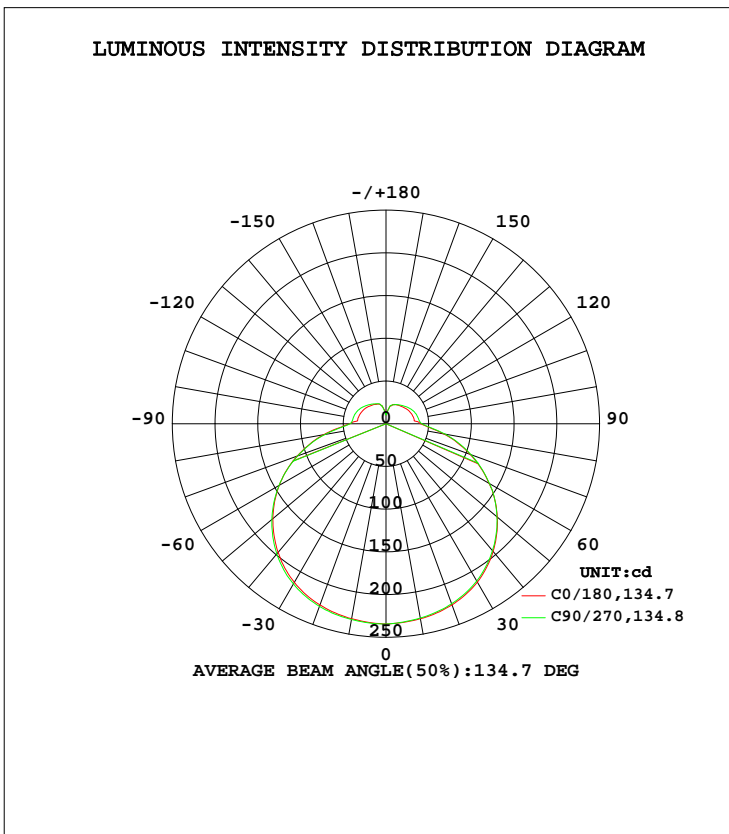


LUMINAIRE PHOTOMETRIC TEST REPORT

Test:U:120.1V I:0.1758A P:19.41W PF:0.9196 Lamp Flux:1080.85x1 lm		
NAME: ASD-LFC-LF-12D20-AC 3500K	TYPE:N/A	WEIGHT:N/A
SPEC.:N/A	DIM.: N/A	SERIAL No.:N/A
MFR.: ASD Lighting Corp	SUR.:N/A	Shielding Angle:N/A

DATA OF LAMP		PHOTOMETRIC DATA Eff: 55.69 lm/W			
MODEL ASD-LFC-LF-12D20-AC 3500K		I <sub>max</sub> (cd)	234.4	S/MH(C0/180)	1.36
NOMINAL POWER(W)		LOR(%)	100.0	S/MH(C90/270)	1.35
RATED VOLTAGE(V)	120	TOTAL FLUX(lm)	1080.9	η UP, DN(C0-180)	9.4,41.0
NOMINAL FLUX(lm)	1080.85	CIE CLASS	SEMI-D.	η UP, DN(C180-360)	9.2,40.3
LAMPS INSIDE	1	η up(%)	18.7	CIBSE SHR NOM	1.50
TEST VOLTAGE(V)	120	η down(%)	81.3	CIBSE SHR MAX	1.55



C Range: 0 - 360DEG  
 C Interval: 22.5DEG  
 Test Speed: HIGH  
 Temperature:25.1DEG  
 Operators:Evan  
 Test Date:2022-11-21

γ Range: 0 - 180DEG  
 γ Interval: 1.0DEG  
 Test System:EVERFINE GO-R5000\_V2 SYSTEM V2.0.351  
 Humidity:44%  
 Test Distance:2.532m [K=1.0000]  
 Remarks:

## ZONAL FLUX DIAGRAM

## ZONAL FLUX DIAGRAM:

$\gamma$	C0	C45	C90	C135	C180	C225	C270	C315	$\gamma$	$\Phi$ zone	$\Phi$ total	%lum,lamp
10	231.7	232.3	232.7	232.5	231.8	231.1	230.9	231.1	0- 10	22.23	22.23	2.06,2.06
20	225.8	226.8	227.5	227.1	225.6	224.6	224.3	224.6	10- 20	64.87	87.10	8.06,8.06
30	214.5	215.9	216.6	215.9	214.0	212.9	212.5	213.0	20- 30	102.0	189.1	17.5,17.5
40	196.5	197.9	198.8	197.6	195.0	194.1	193.8	194.6	30- 40	129.0	318.1	29.4,29.4
50	172.9	173.7	174.4	172.6	170.1	169.6	169.6	170.8	40- 50	142.5	460.6	42.6,42.6
60	144.4	144.2	144.6	142.1	139.1	139.1	139.8	141.4	50- 60	140.9	601.5	55.6,55.6
70	110.6	109.8	110.0	107.0	104.8	105.4	105.9	107.5	60- 70	123.9	725.4	67.1,67.1
80	74.07	72.74	72.53	69.67	68.52	69.24	70.08	71.25	70- 80	94.58	820.0	75.9,75.9
90	42.60	42.17	42.34	40.83	40.60	41.74	42.29	42.35	80- 90	58.88	878.9	81.3,81.3
100	33.52	38.05	39.03	37.66	33.36	38.14	38.40	37.61	90-100	42.40	921.3	85.2,85.2
110	32.56	35.96	37.62	35.61	32.32	35.74	36.66	35.03	100-110	38.11	959.4	88.8,88.8
120	31.33	33.77	35.26	33.38	30.78	33.10	34.13	32.66	110-120	33.67	993.1	91.9,91.9
130	29.71	31.34	32.33	30.95	28.81	30.35	31.10	30.04	120-130	28.48	1022	94.5,94.5
140	27.73	29.02	29.49	28.51	27.04	27.75	28.23	27.69	130-140	22.76	1044	96.6,96.6
150	26.27	26.91	26.91	26.53	25.54	25.59	25.99	25.79	140-150	17.11	1061	98.2,98.2
160	24.53	24.88	24.96	24.45	24.04	22.99	23.66	23.52	150-160	11.68	1073	99.3,99.3
170	18.77	18.90	18.28	18.42	17.56	17.55	17.37	17.48	160-170	6.310	1079	99.9,99.9
180	11.63	11.11	10.93	11.19	12.04	11.76	12.57	12.32	170-180	1.449	1081	100,100
DEG	LUMINOUS INTENSITY:cd									UNIT:lm		

Conical surface Flux(90deg): 388.59 lm

%lum = 36.0%

%lamp = 36.0%

Conical surface Flux(120deg): 601.48 lm

%lum = 55.6%

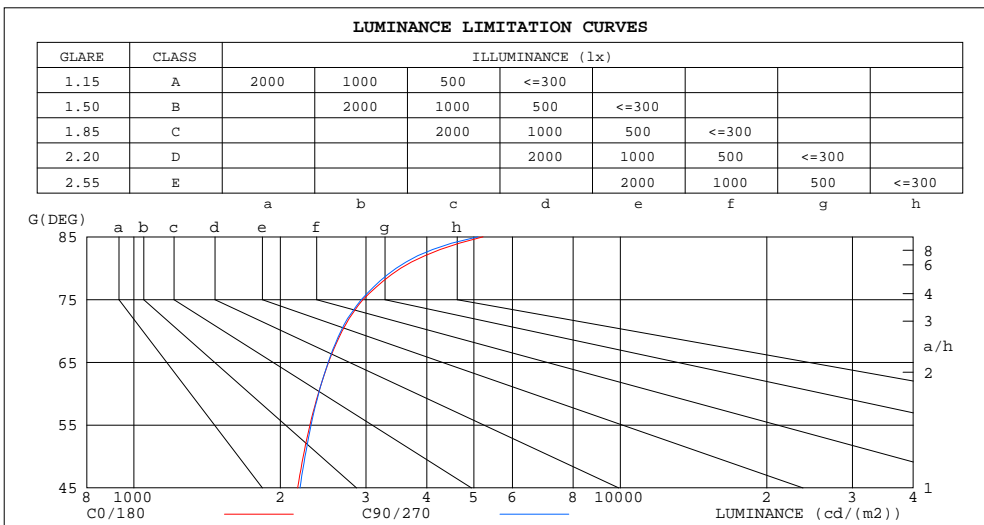
%lamp = 55.6%

C Range: 0 - 360DEG  
 C Interval: 22.5DEG  
 Test Speed: HIGH  
 Temperature:25.1DEG  
 Operators:Evan  
 Test Date:2022-11-21

$\gamma$  Range: 0 - 180DEG  
 $\gamma$  Interval: 1.0DEG  
 Test System:EVERFINE GO-R5000\_V2 SYSTEM V2.0.351  
 Humidity:44%  
 Test Distance:2.532m [K=1.0000]  
 Remarks:

LUMINANCE LIMITATION CURVES

Test:U:120.1V I:0.1758A P:19.41W PF:0.9196 Lamp Flux:1080.85x1 lm		
NAME: 3500K ASD-LFC-LF-12D20-AC	TYPE:N/A	WEIGHT:N/A
SPEC.:N/A	DIM.: N/A	SERIAL No.:N/A
MFR.: ASD Lighting Corp	SUR.:N/A	Shielding Angle:N/A



LUMINANCE cd/(m2)		
G (DEG)	C0/180	C90/270
85	5221	5091
80	3536	3462
75	2958	2935
70	2680	2665
65	2513	2508
60	2393	2397
55	2301	2313
50	2229	2249
45	2171	2195

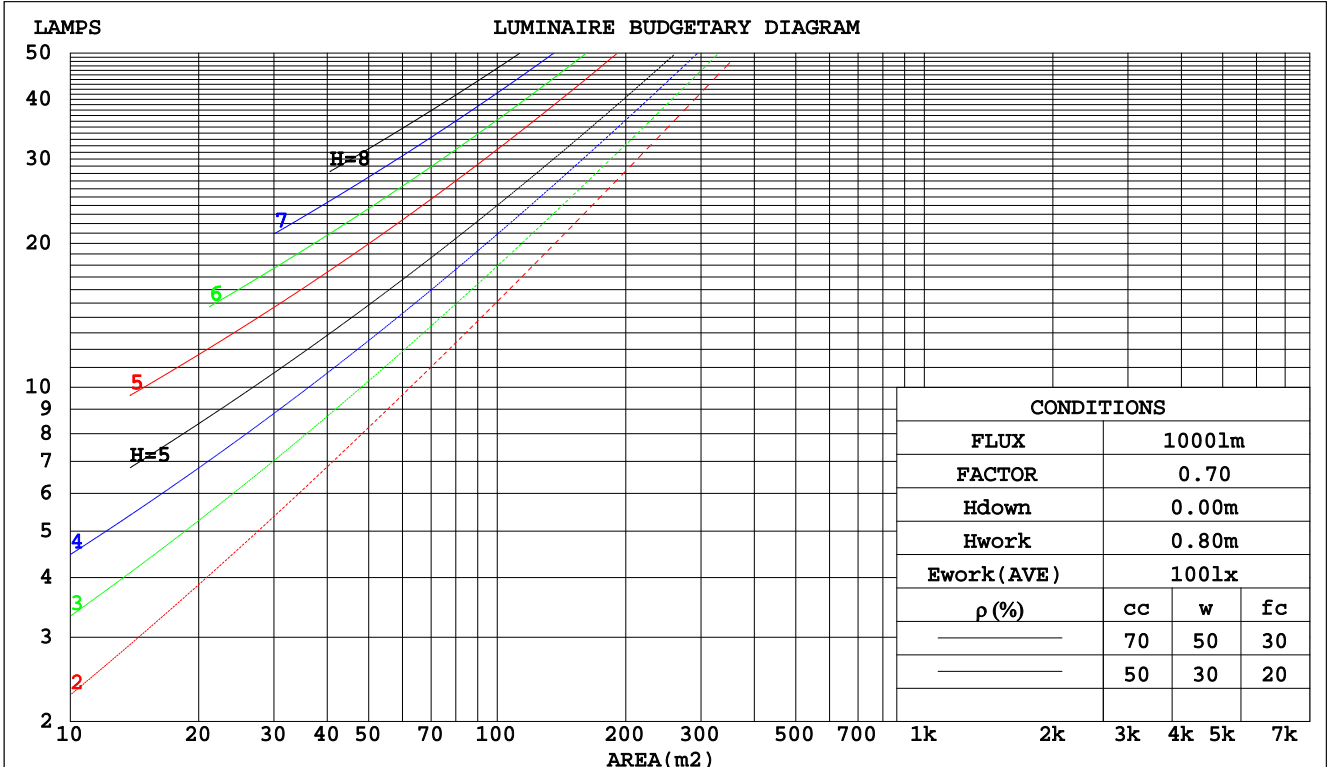
C Range: 0 - 360DEG  
 C Interval: 22.5DEG  
 Test Speed: HIGH  
 Temperature: 25.1DEG  
 Operators: Evan  
 Test Date: 2022-11-21

$\gamma$  Range: 0 - 180DEG  
 $\gamma$  Interval: 1.0DEG  
 Test System: EVERFINE GO-R5000\_V2 SYSTEM V2.0.351  
 Humidity: 44%  
 Test Distance: 2.532m [K=1.0000]  
 Remarks:

CU AND LUMINAIRE BUDGETARY ESTIMATE DIAGRAM

Test:U:120.1V I:0.1758A P:19.41W PF:0.9196 Lamp Flux:1080.85x1 lm		
NAME: 3500K ASD-LFC-LF-12D20-AC	TYPE:N/A	WEIGHT:N/A
SPEC.:N/A	DIM.: N/A	SERIAL No.:N/A
MFR.: ASD Lighting Corp	SUR.:N/A	Shielding Angle:N/A

pcc	80%			70%			50%			30%			10%			0
pw	50%	30%	10%	50%	30%	10%	50%	30%	10%	50%	30%	10%	50%	30%	10%	0
pfc	20%			20%			20%			20%			20%			0
RCR	RCR:Room Cavity Ratio						Coefficients of Utilization(CU)									
0.0	1.15	1.15	1.15	1.10	1.10	1.10	1.01	1.01	1.01	.92	.92	.92	.85	.85	.85	.81
1.0	.97	.92	.87	.93	.88	.84	.85	.81	.78	.78	.75	.72	.71	.69	.67	.63
2.0	.83	.75	.69	.79	.73	.67	.73	.67	.62	.67	.62	.58	.61	.57	.54	.51
3.0	.72	.63	.56	.69	.61	.54	.63	.57	.51	.58	.53	.48	.53	.49	.45	.42
4.0	.63	.54	.47	.61	.52	.46	.56	.49	.43	.51	.45	.40	.47	.42	.38	.35
5.0	.56	.47	.40	.54	.45	.39	.50	.42	.37	.46	.39	.34	.42	.37	.32	.30
6.0	.50	.41	.34	.48	.40	.33	.44	.37	.32	.41	.35	.30	.38	.32	.28	.26
7.0	.45	.36	.30	.43	.35	.29	.40	.33	.28	.37	.31	.26	.34	.29	.25	.22
8.0	.41	.32	.26	.40	.31	.26	.37	.30	.25	.34	.28	.23	.31	.26	.22	.20
9.0	.37	.29	.24	.36	.28	.23	.34	.27	.22	.31	.25	.21	.29	.24	.20	.18
10.0	.34	.26	.21	.33	.26	.21	.31	.24	.20	.29	.23	.19	.27	.22	.18	.16



C Range: 0 - 360DEG  
 C Interval: 22.5DEG  
 Test Speed: HIGH  
 Temperature:25.1DEG  
 Operators:Evan  
 Test Date:2022-11-21

γ Range: 0 - 180DEG  
 γ Interval: 1.0DEG  
 Test System:EVERFINE GO-R5000\_V2 SYSTEM V2.0.351  
 Humidity:44%  
 Test Distance:2.532m [K=1.0000]  
 Remarks:

WEC AND CCEC

Test:U:120.1V I:0.1758A P:19.41W PF:0.9196 Lamp Flux:1080.85x1 lm		
NAME: 3500K ASD-LFC-LF-12D20-AC	TYPE:N/A	WEIGHT:N/A
SPEC.:N/A	DIM.: N/A	SERIAL No.:N/A
MFR.: ASD Lighting Corp	SUR.:N/A	Shielding Angle:N/A

ρcc	80%			70%			50%			30%			10%			0
ρw	50%	30%	10%	50%	30%	10%	50%	30%	10%	50%	30%	10%	50%	30%	10%	0
ρfc	20%			20%			20%			20%			20%			0
RCR	RCR:Room Cavity Ratio						Wall Exitance Coefficients(WEC)									
0.0																
1.0	.362	.206	.065	.349	.199	.063	.325	.186	.059	.303	.174	.056	.282	.164	.053	
2.0	.321	.176	.054	.309	.170	.052	.287	.160	.050	.267	.150	.047	.249	.141	.044	
3.0	.288	.153	.046	.278	.149	.045	.258	.140	.042	.240	.131	.040	.223	.123	.038	
4.0	.261	.136	.040	.252	.132	.039	.234	.124	.037	.217	.117	.035	.202	.110	.033	
5.0	.238	.122	.035	.230	.118	.034	.214	.111	.033	.198	.105	.031	.184	.098	.030	
6.0	.219	.110	.031	.211	.107	.031	.197	.101	.029	.183	.095	.028	.170	.089	.027	
7.0	.203	.100	.028	.195	.097	.028	.182	.092	.026	.169	.087	.025	.157	.082	.024	
8.0	.188	.092	.026	.182	.089	.025	.169	.085	.024	.157	.080	.023	.146	.075	.022	
9.0	.176	.085	.024	.170	.083	.023	.158	.078	.022	.147	.074	.021	.137	.070	.020	
10.0	.165	.079	.022	.159	.077	.021	.148	.073	.020	.138	.069	.020	.129	.065	.019	

ρcc	80%			70%			50%			30%			10%			0
ρw	50%	30%	10%	50%	30%	10%	50%	30%	10%	50%	30%	10%	50%	30%	10%	0
ρfc	20%			20%			20%			20%			20%			0
RCR	RCR:Room Cavity Ratio						Ceiling Cavity Exitance Coefficients(CCEC)									
0.0	.333	.333	.333	.284	.284	.284	.194	.194	.194	.112	.112	.112	.036	.036	.036	
1.0	.327	.299	.274	.280	.257	.236	.192	.177	.163	.110	.102	.095	.035	.033	.031	
2.0	.321	.276	.239	.275	.238	.207	.188	.165	.144	.109	.096	.084	.035	.031	.028	
3.0	.313	.260	.217	.269	.224	.188	.184	.156	.132	.106	.091	.078	.034	.030	.025	
4.0	.306	.247	.202	.262	.214	.176	.180	.149	.124	.104	.087	.073	.034	.028	.024	
5.0	.298	.237	.192	.256	.205	.167	.176	.143	.118	.102	.084	.070	.033	.027	.023	
6.0	.291	.229	.185	.250	.199	.161	.173	.139	.114	.100	.082	.068	.032	.027	.022	
7.0	.284	.223	.180	.244	.193	.157	.169	.135	.111	.098	.080	.066	.032	.026	.022	
8.0	.278	.217	.176	.239	.188	.153	.165	.132	.109	.096	.078	.065	.031	.026	.021	
9.0	.271	.213	.173	.234	.184	.151	.162	.130	.107	.094	.077	.064	.031	.025	.021	
10.0	.266	.208	.170	.229	.181	.149	.159	.127	.106	.093	.075	.063	.030	.025	.021	

C Range: 0 - 360DEG  
 C Interval: 22.5DEG  
 Test Speed: HIGH  
 Temperature:25.1DEG  
 Operators:Evan  
 Test Date:2022-11-21

γ Range: 0 - 180DEG  
 γ Interval: 1.0DEG  
 Test System:EVERFINE GO-R5000\_V2 SYSTEM V2.0.351  
 Humidity:44%  
 Test Distance:2.532m [K=1.0000]  
 Remarks:

UGR(Unified Glare Rating) Table

Test:U:120.1V I:0.1758A P:19.41W PF:0.9196 Lamp Flux:1080.85x1 lm										
NAME: 3500K ASD-LFC-LF-12D20-AC					TYPE:N/A			WEIGHT:N/A		
SPEC.:N/A					DIM.: N/A			SERIAL No.:N/A		
MFR.: ASD Lighting Corp					SUR.:N/A			Shielding Angle:N/A		
ceiling/cavity	0.7	0.7	0.5	0.5	0.3	0.7	0.7	0.5	0.5	0.3
walls	0.5	0.3	0.5	0.3	0.3	0.5	0.3	0.5	0.3	0.3
working plane	0.2	0.2	0.2	0.2	0.2	0.2	0.2	0.2	0.2	0.2
Room dimensions	Viewed crosswise					Viewed endwise				
x = 2H y = 2H	14.8	16.2	15.3	16.7	17.3	14.8	16.2	15.4	16.7	17.3
3H	16.9	18.2	17.5	18.7	19.3	17.0	18.2	17.5	18.7	19.3
4H	18.0	19.2	18.6	19.7	20.4	18.0	19.2	18.6	19.7	20.4
6H	19.1	20.2	19.6	20.7	21.4	19.0	20.1	19.6	20.7	21.4
8H	19.6	20.6	20.2	21.2	21.9	19.5	20.6	20.1	21.2	21.9
12H	20.1	21.2	20.7	21.8	22.4	20.0	21.1	20.7	21.7	22.4
4H 2H	15.5	16.7	16.1	17.3	17.9	15.6	16.7	16.1	17.3	17.9
3H	17.9	18.9	18.5	19.5	20.2	17.9	18.9	18.5	19.5	20.2
4H	19.1	20.0	19.7	20.6	21.3	19.1	20.0	19.7	20.6	21.3
6H	20.3	21.1	20.9	21.8	22.5	20.3	21.1	20.9	21.7	22.5
8H	20.9	21.7	21.6	22.3	23.1	20.8	21.6	21.5	22.3	23.1
12H	21.5	22.3	22.2	22.9	23.7	21.5	22.2	22.2	22.9	23.7
8H 4H	19.5	20.3	20.2	20.9	21.7	19.5	20.3	20.2	20.9	21.7
6H	21.0	21.6	21.7	22.3	23.1	20.9	21.6	21.6	22.3	23.1
8H	21.7	22.3	22.5	23.0	23.9	21.7	22.3	22.4	23.0	23.8
12H	22.6	23.1	23.3	23.8	24.7	22.5	23.0	23.2	23.8	24.6
12H 4H	19.6	20.3	20.3	21.0	21.8	19.6	20.3	20.3	21.0	21.8
6H	21.1	21.7	21.8	22.4	23.3	21.1	21.7	21.8	22.4	23.2
8H	22.0	22.5	22.7	23.2	24.1	22.0	22.5	22.7	23.2	24.0
Variations with the observer position at spacings:										
S = 1.0H	+ 0.1 / - 0.1					+ 0.1 / - 0.1				
1.5H	+ 0.2 / - 0.3					+ 0.2 / - 0.3				
2.0H	+ 0.2 / - 0.4					+ 0.2 / - 0.4				

CIE Pub.117 Corrected 1081 lm Total Lamp Luminous Flux.(8log(F/F0) = 0.3)

C Range: 0 - 360DEG  
 C Interval: 22.5DEG  
 Test Speed: HIGH  
 Temperature:25.1DEG  
 Operators:Evan  
 Test Date:2022-11-21

γ Range: 0 - 180DEG  
 γ Interval: 1.0DEG  
 Test System:EVERFINE GO-R5000\_V2 SYSTEM V2.0.351  
 Humidity:44%  
 Test Distance:2.532m [K=1.0000]  
 Remarks:

## UTILIZATION FACTORS TABLE

Test:U:120.1V I:0.1758A P:19.41W PF:0.9196 Lamp Flux:1080.85x1 lm		
3500K ASD-LFC-LF-12D20-AC	TYPE:N/A	WEIGHT:N/A
SPEC.:N/A	DIM.: N/A	SERIAL No.:N/A
MFR.: ASD Lighting Corp	SUR.:N/A	Shielding Angle:N/A

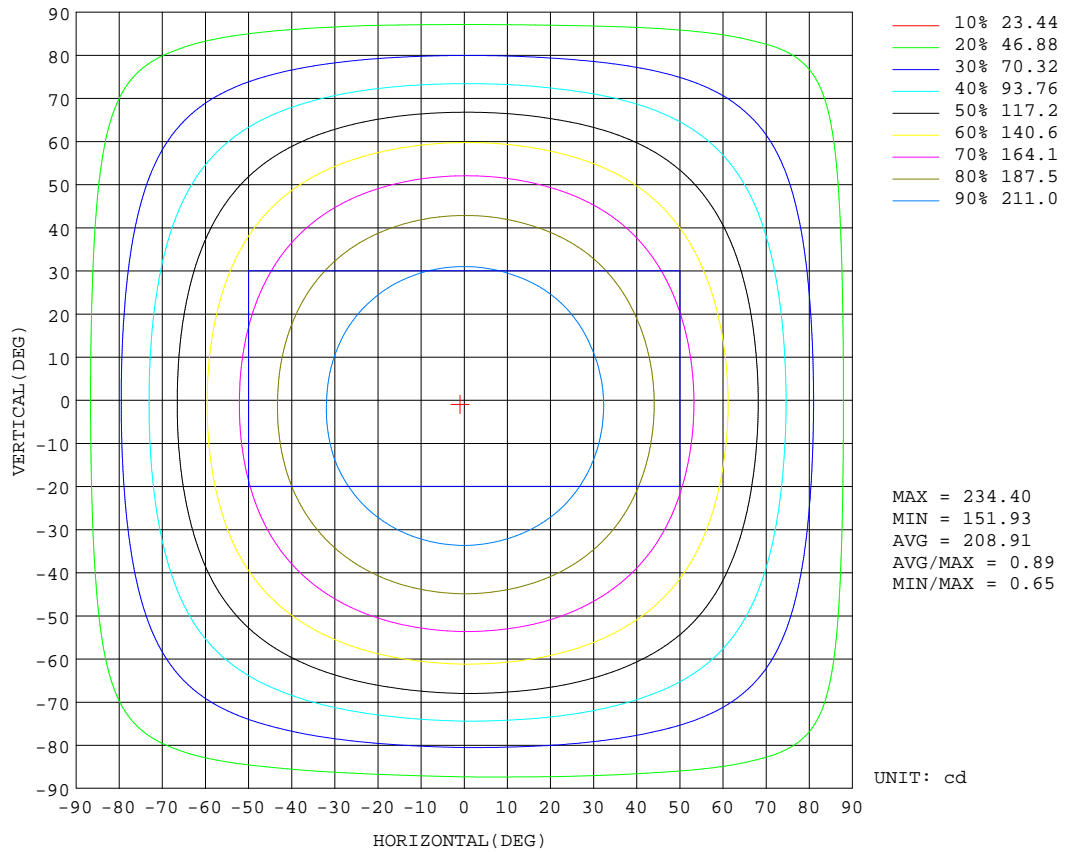
REFLECTANCE										
Ceiling	0.8	0.8	0.8	0.7	0.7	0.7	0.5	0.5	0.5	0
Walls	0.7	0.5	0.3	0.7	0.5	0.3	0.7	0.5	0.3	0
Working plane	0.2	0.2	0.2	0.2	0.2	0.2	0.2	0.2	0.2	0
ROOM INDEX	UTILIZATION FACTORS(PERCENT) $k(RI) \times RCR = 5$									
k = 0.60	48	36	29	47	35	29	45	34	28	21
0.80	58	45	37	56	44	37	53	42	36	27
1.00	66	53	45	64	52	44	60	52	43	34
1.25	73	60	52	70	59	51	66	56	49	39
1.50	78	66	58	75	64	57	70	61	54	44
2.00	85	75	67	82	72	65	76	68	62	50
2.50	90	80	72	86	77	70	80	72	67	54
3.00	93	85	78	90	82	75	83	76	71	58
4.00	98	90	84	94	87	82	87	81	77	62
5.00	101	94	89	97	91	86	89	84	80	65
ROOM INDEX	UF(total)									Direct
According to DIN EN 13032-2 2004			Suspended				SHRNOM = 1.25			

C Range: 0 - 360DEG  
 C Interval: 22.5DEG  
 Test Speed: HIGH  
 Temperature:25.1DEG  
 Operators:Evan  
 Test Date:2022-11-21

$\gamma$  Range: 0 - 180DEG  
 $\gamma$  Interval: 1.0DEG  
 Test System:EVERFINE GO-R5000\_V2 SYSTEM V2.0.351  
 Humidity:44%  
 Test Distance:2.532m [K=1.0000]  
 Remarks:

ISOCANDELA DIAGRAM

Test:U:120.1V I:0.1758A P:19.41W PF:0.9196 Lamp Flux:1080.85x1 lm		
NAME:3500K ASD-LFC-LF-12D20-AC	TYPE:N/A	WEIGHT:N/A
SPEC.:N/A	DIM.: N/A	SERIAL No.:N/A
MFR.: ASD Lighting Corp	SUR.:N/A	Shielding Angle:N/A



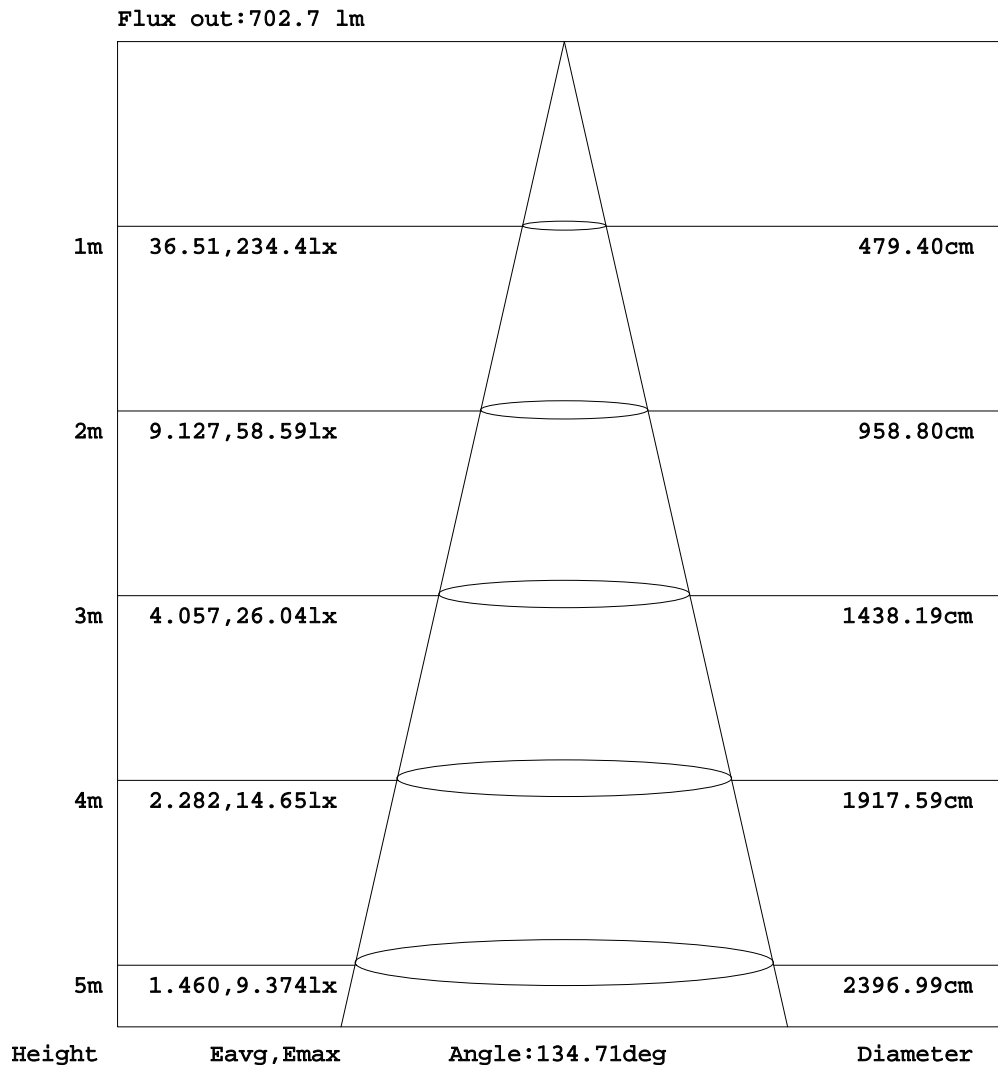
C Range: 0 - 360DEG  
 C Interval: 22.5DEG  
 Test Speed: HIGH  
 Temperature:25.1DEG  
 Operators:Evan  
 Test Date:2022-11-21

γ Range: 0 - 180DEG  
 γ Interval: 1.0DEG  
 Test System:EVERFINE GO-R5000\_V2 SYSTEM V2.0.351  
 Humidity:44%  
 Test Distance:2.532m [K=1.0000]  
 Remarks:



AAI Figure

Test:U:120.1V I:0.1758A P:19.41W PF:0.9196 Lamp Flux:1080.85x1 lm		
NAME: 3500K ASD-LFC-LF-12D20-AC	TYPE:N/A	WEIGHT:N/A
SPEC.:N/A	DIM.: N/A	SERIAL No.:N/A
MFR.: ASD Lighting Corp	SUR.:N/A	Shielding Angle:N/A



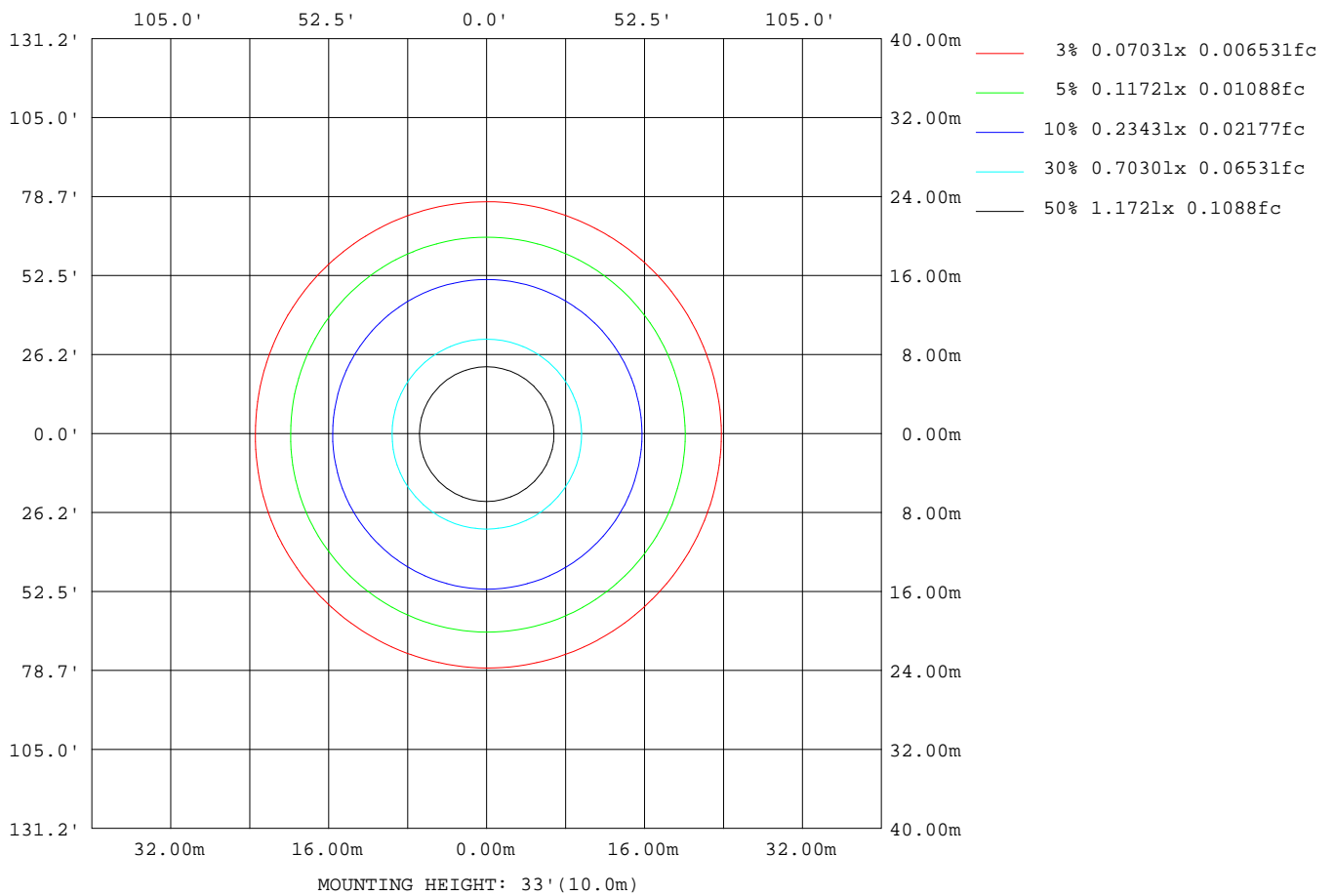
Note:The Curves indicate the illuminated area and the average illumination when the luminaire is at different distance.

C Range: 0 - 360DEG  
 C Interval: 22.5DEG  
 Test Speed: HIGH  
 Temperature:25.1DEG  
 Operators:Evan  
 Test Date:2022-11-21

γ Range: 0 - 180DEG  
 γ Interval: 1.0DEG  
 Test System:EVERFINE GO-R5000\_V2 SYSTEM V2.0.351  
 Humidity:44%  
 Test Distance:2.532m [K=1.0000]  
 Remarks:

ISOLUX DIAGRAM

Test:U:120.1V I:0.1758A P:19.41W PF:0.9196 Lamp Flux:1080.85x1 lm		
NAME: 3500K ASD-LFC-LF-12D20-AC	TYPE:N/A	WEIGHT:N/A
SPEC.:N/A	DIM.: N/A	SERIAL No.:N/A
MFR.: ASD Lighting Corp	SUR.:N/A	Shielding Angle:N/A



C Range: 0 - 360DEG  
 C Interval: 22.5DEG  
 Test Speed: HIGH  
 Temperature:25.1DEG  
 Operators:Evan  
 Test Date:2022-11-21

γ Range: 0 - 180DEG  
 γ Interval: 1.0DEG  
 Test System:EVERFINE GO-R5000\_V2 SYSTEM V2.0.351  
 Humidity:44%  
 Test Distance:2.532m [K=1.0000]  
 Remarks:

## LED Avg.L Report

Test:U:120.1V I:0.1758A P:19.41W PF:0.9196 Lamp Flux:1080.85x1 lm		
NAME:3500K ASD-LFC-LF-12D20-AC	TYPE:N/A	WEIGHT:N/A
SPEC.:N/A	DIM.: N/A	SERIAL No.:N/A
MFR.: ASD Lighting Corp	SUR.:N/A	Shielding Angle:N/A

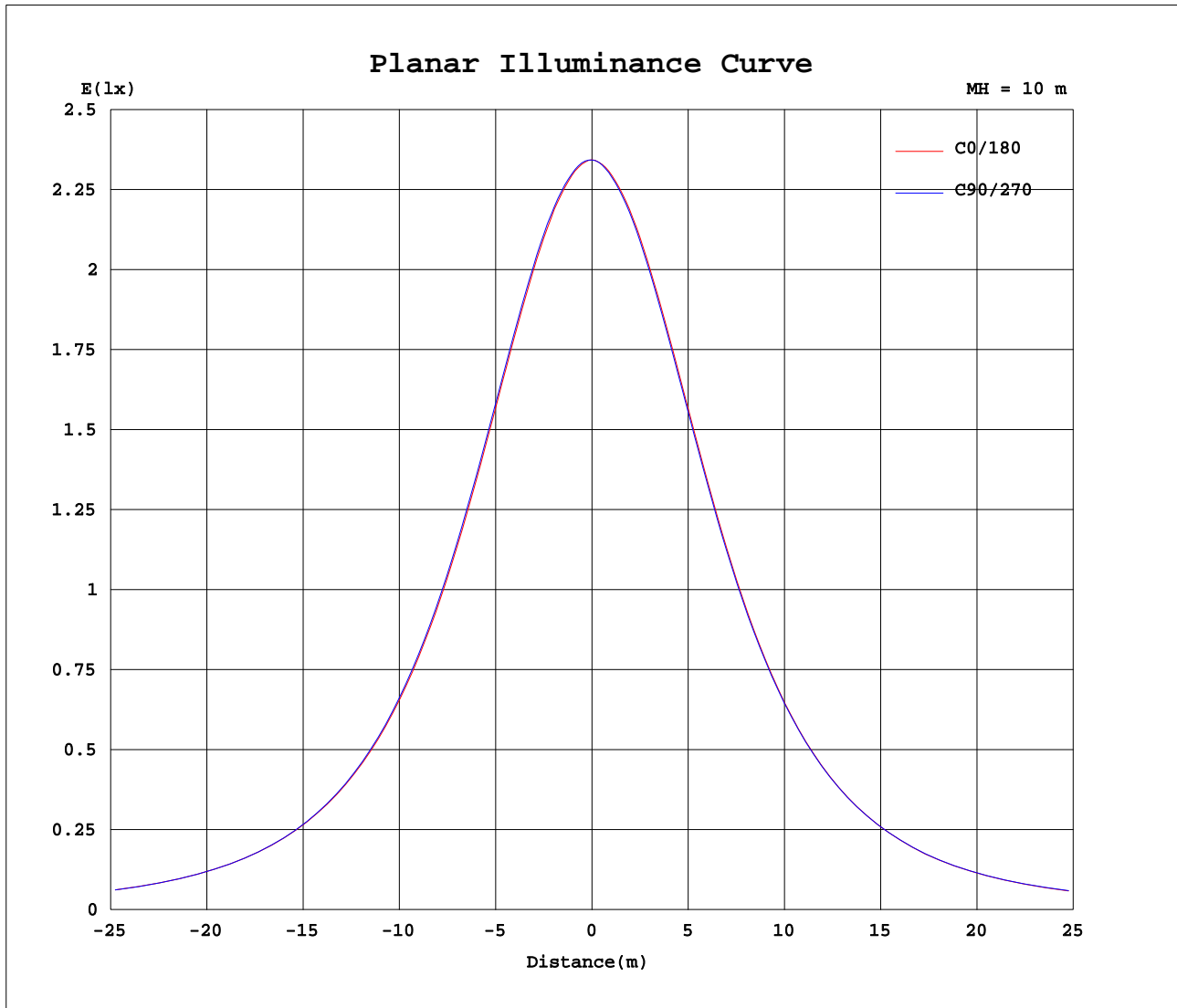
AvgL	cd/m2
L_0~180(65)av	2457
L_0~180(75)av	2869
L_0~180(85)av	5037
L_90~270(65)av	2462
L_90~270(75)av	2879
L_90~270(85)av	5044
L_45(65)av	2453
L_45(75)av	2864
L_45(85)av	4982

Standard: GB/T 29293-2012

C Range: 0 - 360DEG  
C Interval: 22.5DEG  
Test Speed: HIGH  
Temperature:25.1DEG  
Operators:Evan  
Test Date:2022-11-21

$\gamma$  Range: 0 - 180DEG  
 $\gamma$  Interval: 1.0DEG  
Test System:EVERFINE GO-R5000\_V2 SYSTEM V2.0.351  
Humidity:44%  
Test Distance:2.532m [K=1.0000]  
Remarks:

Planar Illuminance Curve



C Range: 0 - 360DEG  
 C Interval: 22.5DEG  
 Test Speed: HIGH  
 Temperature: 25.1DEG  
 Operators: Evan  
 Test Date: 2022-11-21

$\gamma$  Range: 0 - 180DEG  
 $\gamma$  Interval: 1.0DEG  
 Test System: EVERFINE GO-R5000\_V2 SYSTEM V2.0.351  
 Humidity: 44%  
 Test Distance: 2.532m [K=1.0000]  
 Remarks:

LUMINOUS DISTRIBUTION INTENSITY DATA

Test:U:120.1V I:0.1758A P:19.41W PF:0.9196 Lamp Flux:1080.85x1 lm		
NAME: 3500K ASD-LFC-LF-12D20-AC	TYPE:N/A	WEIGHT:N/A
SPEC.:N/A	DIM.: N/A	SERIAL No.:N/A
MFR.: ASD Lighting Corp	SUR.:N/A	Shielding Angle:N/A

Table--1

UNIT: cd

C(DEG)\ γ (DEG)	0	22.5	45	67.5	90	112.5	135	157.5	180	202.5	225	247.5	270	292.5	315	337.5			
0	234	234	234	234	234	234	234	234	234	234	234	234	234	234	234	234			
5	233	234	234	234	234	234	234	234	233	233	233	233	233	233	233	233			
10	232	232	232	232	233	233	232	232	232	232	231	231	231	231	231	232			
15	229	230	230	230	231	231	230	230	229	229	228	228	228	228	228	229			
20	226	226	227	227	228	227	227	227	226	225	225	224	224	224	225	225			
25	221	222	222	223	223	223	222	222	221	220	220	219	219	219	220	220			
30	214	215	216	216	217	216	216	215	214	213	213	213	212	213	213	214			
35	206	207	208	208	209	208	208	207	205	205	204	204	204	204	205	205			
40	196	197	198	198	199	198	198	197	195	195	194	194	194	194	195	195			
45	185	186	187	187	187	187	186	185	183	183	182	182	182	183	183	184			
50	173	173	174	174	174	174	173	172	170	170	170	169	170	170	171	172			
55	159	159	160	160	160	159	158	157	156	156	155	155	156	156	157	158			
60	144	144	144	145	145	143	142	141	139	139	139	139	140	140	141	143			
65	128	128	128	128	128	127	125	124	122	123	123	123	123	124	125	126			
70	111	110	110	110	110	108	107	106	105	105	105	106	106	106	108	109			
75	92.3	91.9	91.5	91.9	91.7	90.2	88.7	88.1	86.8	87.3	87.8	88.1	88.2	88.5	89.8	90.8			
80	74.1	73.4	72.7	72.9	72.5	71.1	69.7	69.2	68.5	68.8	69.2	69.8	70.1	70.3	71.3	72.2			
85	54.9	53.8	53.5	53.8	53.5	52.3	51.2	50.9	51.0	51.2	51.8	52.4	52.5	52.6	53.0	53.5			
90	42.6	42.4	42.2	42.4	42.3	41.6	40.8	40.6	40.6	41.1	41.7	42.2	42.3	42.3	42.3	42.3			
95	34.9	38.9	39.2	39.7	39.8	39.1	38.5	38.2	34.8	38.7	39.2	39.5	39.4	39.0	39.0	38.8			
100	33.5	36.5	38.0	38.8	39.0	38.3	37.7	36.6	33.4	36.7	38.1	38.5	38.4	37.9	37.6	36.1			
105	33.1	34.4	37.0	38.1	38.5	37.6	36.7	34.4	32.8	34.2	36.9	37.7	37.6	37.1	36.3	33.7			
110	32.6	32.9	36.0	37.2	37.6	36.9	35.6	32.6	32.3	32.7	35.7	36.6	36.7	36.0	35.0	32.1			
115	31.9	32.4	35.0	36.1	36.6	35.7	34.5	31.8	31.6	31.8	34.5	35.3	35.5	34.8	34.0	31.2			
120	31.3	31.5	33.8	34.9	35.3	34.6	33.4	31.1	30.8	30.9	33.1	34.0	34.1	33.6	32.7	30.5			
125	30.6	30.9	32.5	33.8	33.8	33.4	32.2	30.3	29.9	29.9	31.7	32.7	32.6	32.4	31.3	29.9			
130	29.7	30.0	31.3	32.5	32.3	32.1	31.0	29.4	28.8	28.9	30.3	31.2	31.1	31.0	30.0	29.0			
135	28.7	29.1	30.1	31.1	30.8	30.5	29.7	28.5	27.8	28.0	29.0	29.8	29.6	29.6	28.9	28.1			
140	27.7	28.2	29.0	29.6	29.5	29.2	28.5	27.7	27.0	27.0	27.7	28.4	28.2	28.3	27.7	27.2			
145	27.1	27.3	27.9	28.4	28.2	28.2	27.4	27.0	26.4	26.2	26.7	27.3	27.1	27.1	26.7	26.4			
150	26.3	26.4	26.9	27.2	26.9	27.0	26.5	26.0	25.5	25.2	25.6	26.1	26.0	26.1	25.8	25.5			
155	25.4	25.5	25.9	26.2	26.0	25.9	25.4	25.2	24.9	24.5	24.4	24.8	24.7	24.6	24.5	24.6			
160	24.5	24.7	24.9	25.0	25.0	24.8	24.5	24.0	24.0	23.3	23.0	23.4	23.7	23.6	23.5	23.6			
165	22.4	23.0	23.1	22.9	22.3	22.1	22.7	22.4	21.8	21.8	21.8	22.2	22.4	22.1	22.1	22.1			
170	18.8	18.8	18.9	18.6	18.3	18.6	18.4	18.1	17.6	17.6	17.6	17.4	17.4	17.3	17.5	18.1			
175	14.7	14.9	14.8	14.4	14.0	14.4	13.9	13.8	13.7	13.8	13.5	13.4	13.6	13.2	13.5	14.1			
180	11.6	11.3	11.1	11.6	10.9	11.6	11.2	10.1	12.0	12.0	11.8	12.0	12.6	12.3	12.3	11.7			

C Range: 0 - 360DEG  
 C Interval: 22.5DEG  
 Test Speed: HIGH  
 Temperature:25.1DEG  
 Operators:Evan  
 Test Date:2022-11-21

γ Range: 0 - 180DEG  
 γ Interval: 1.0DEG  
 Test System:EVERFINE GO-R5000\_V2 SYSTEM V2.0.351  
 Humidity:44%  
 Test Distance:2.532m [K=1.0000]  
 Remarks: