



LED COMMERCIAL DOWNLIGHT

► **DESIGN & OPTIONS** - LED COMMERCIAL DOWNLIGHT is equipped with a dip switch that is used to adjust both the CCT and wattage. The CCT options are 2700K, 3000K, 3500K, 4000K or 5000K, while the wattage options depend on the size of the downlight. They come in 4", 6", 8" and 10" sizes with a classic, low-profile design and a smooth trim. It is designed to operate on 120-277V circuits and is equipped with a 0-10V dimmable driver. The EM back-up provides 90 minutes of power (sold separately).

► **INSTALLATION** - With everything you need included in one set, installation has never been easier. The wiring and spring-loaded clips ensure a snug fit to the surface and the safety cable eliminates the possibility of an incident during installation. Refer to install instructions for detailed steps.

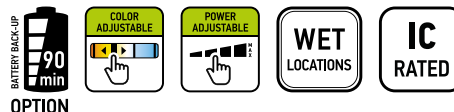
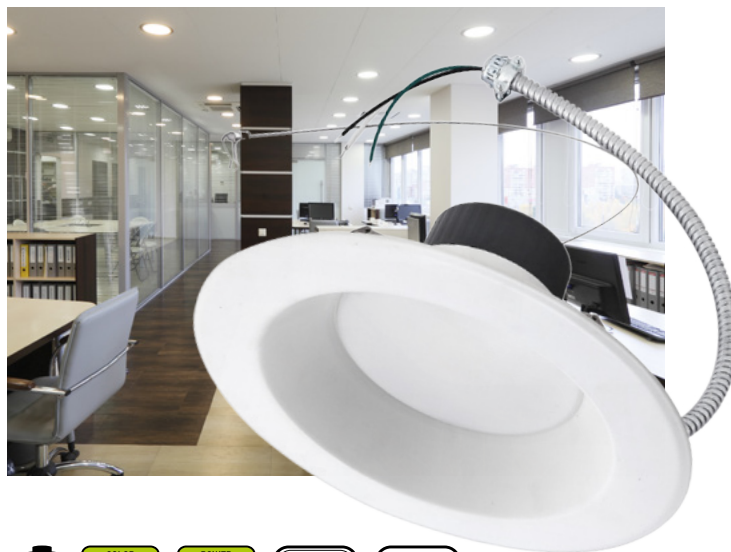
► **APPLICATION** - Install LED COMMERCIAL DOWNLIGHT to your ceiling for bright light in your hallway, corridor, or any other commercial space with a high ceiling. It is suitable for Wet locations, making it perfect for spaces with humidity requirements.

► **ENERGY SAVING & EFFICIENCY** - Replacing an incandescent fixture with LED COMMERCIAL DOWNLIGHT can save you 8 times as much on your current energy costs. With a lifespan of 50,000 hours, these fixtures are made to last decades under normal operation! This fixture will save you a significant amount of money in its lifetime.

► **CERTIFICATION & WARRANTY** - Buy with confidence: ASD provides a 5-year warranty along with UL and ENERGY STAR certifications to guarantee top quality products and safety!

Top US certifications allow participation in rebates; please check the rebate programs available in your state.

Catalog number	
Notes	
Type	



PRODUCT LEGEND:

Family	Modification	Size	Dimmable	Watts	CCT
ASD-CDL	X	X	X	XX	XX
LED Commercial Downlight	7	4 = 4 inch 6 = 6 inch 8 = 8 inch 10 = 10 inch	D = Dimmable A = Power Adjustable	13 = 7/10/13 W 22 = 10/15/22 W 30 = 12/20/30 W 40 = 20/30/40 W	AC = 2,700/3,000/3,500/4,000/5,000 K

LED COMMERCIAL DOWNLIGHT:

Model	Size	Watts	Voltage	Dimmable	CCT	Lumens	Dimensions (DxH)	Cord
ASD-CDL7-4DA13AC	4"	7/10/13 W	120-277 V	0-10 V	2,700/3,000/3,500/4,000/5,000 K	600/850/1,050 lm	5 3/8" x 3 1/16"	1.6 ft
ASD-CDL7-6DA22AC	6"	10/15/22 W	120-277 V	0-10 V	2,700/3,000/3,500/4,000/5,000 K	900/1,300/1,850 lm	8 1/4" x 3 7/8"	1.6 ft
ASD-CDL7-8DA30AC	8"	12/20/30 W	120-277 V	0-10 V	2,700/3,000/3,500/4,000/5,000 K	1,050/1,700/2,400 lm	10 1/4" x 4 1/2"	1.6 ft
ASD-CDL7-10DA40AC	10"	20/30/40 W	120-277 V	0-10 V	2,700/3,000/3,500/4,000/5,000 K	1,800/2,400/3,000 lm	11 1/4" x 4 7/8"	1.6 ft

ORDERING INFORMATION

LED COMMERCIAL DOWNLIGHT:

Model	UPC	Pcs in middle box	Middle box Size	Middle box Weight	GTIN 14 for Middle box	Pcs. per Carton	Carton Size	Carton Weight	GTIN 14 for Carton
ASD-CDL7-4DA13AC	810050736121	4	14.2" x 8" x 6.9"	3.3 lb	10810050736128	8	16.9" x 14.8" x 7.7"	7.1 lb	20810050736125
ASD-CDL7-6DA22AC	810050736022	4	17.7" x 9.6" x 9.8"	7.5 lb	10810050736029	8	20.1" x 18.3" x 10.6"	16.1 lb	20810050736026
ASD-CDL7-8DA30AC	810050736039	-	-	-	-	4	18.9" x 11.4" x 11.6"	9.5 lb	10810050736036
ASD-CDL7-10DA40AC	810050736046	-	-	-	-	4	23.6" x 12.6" x 13"	11.5 lb	10810050736043

ACCESSORIES:

Model	Name	Weight	Dimensions	UPC	Pcs. per Carton	Carton Size	Carton Weight	GTIN 14 for Carton
BLD-HM15D	LED Emergency back-up power supply	2.4 lb	12 15/16" x 1 7/16" x 15/16"	810050734882	10	18.1" x 18.3" x 14.2"	25.6 lb	10810050734889

For most up-to-date spec sheets please refer to asd-lighting.com



LED COMMERCIAL DOWNLIGHT

PRODUCT SPECIFICATIONS:

Construction & Materials			Electrical System		
Housing	Aluminum		Input Voltage	120-277 V	
Lens	Frosted		Max input current	ASD-CDL7-4DA13AC	0.15 A
Finish Color	White			ASD-CDL7-6DA22AC	0.23 A
Weight	ASD-CDL7-4DA13AC	0.7 lb (0.3 kg)		ASD-CDL7-8DA30AC	0.3 A
	ASD-CDL7-6DA22AC	1.5 lb (0.7 kg)		ASD-CDL7-10DA40AC	0.5 A
	ASD-CDL7-8DA30AC	1.9 lb (0.9 kg)	Inrush current (Action time)	ASD-CDL7-4DA13AC	30 A (0.3 S)
	ASD-CDL7-10DA40AC	2 lb (0.9 kg)		ASD-CDL7-6DA22AC	43 A (0.3 S)
		ASD-CDL7-8DA30AC		37 A (0.3 S)	
			ASD-CDL7-10DA40AC	50 A (0.3 S)	
Environmental System			AC input range	min 100 V max 305 V	
Work Environment	Suitable for Wet Locations, IP43		Off State Power	0 W	
Operating Temperature	-13°F to 113°F (-25°C to 45°C)		Power Consumption	ASD-CDL7-4DA13AC	7/10/13 W
L-70 Life	> 50,000 hrs			ASD-CDL7-6DA22AC	10/15/22 W
Optical System				ASD-CDL7-8DA30AC	12/20/30 W
Luminous Flux	ASD-CDL7-4DA13AC	600/850/1,050 lm		ASD-CDL7-10DA40AC	20/30/40 W
	ASD-CDL7-6DA22AC	900/1,300/1,850 lm	Power Factor	> 0.9	
	ASD-CDL7-8DA30AC	1,050/1,700/2,400 lm		Output voltage	ASD-CDL7-4DA13AC
	ASD-CDL7-10DA40AC	1,800/2,400/3,000 lm	ASD-CDL7-6DA22AC		30-42 V
Color Temperature	2,700/3,000/3,500/4,000/5,000 K		ASD-CDL7-8DA30AC		36 V
CRI	> 90		ASD-CDL7-10DA40AC		
Dimming compatible controls			Surge protection	2.5 kV	
Brand	Lutron	Leviton	LED Driver Class	Class 2	
Models	DVSTV-WH	DVSTV-BL	Regular and Voluntary Certifications		
	DVSTV-BR	DVSTV-AL	5-year limited warranty	cULus certified	Energy Star certified
	DVSTV-GR	DVSTV-IV			
	DVSTV-LA				

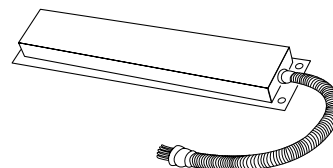
PACKAGE CONTENTS:

Description	Q-ty
LED Commercial Downlight Fixture	1
Wire nut (A)	3
Box	1
Cut sheet	2



ACCESSORIES (sold separately):

LED Emergency back-up power supply
BLD-HM15D



INSTALLATION GUIDE

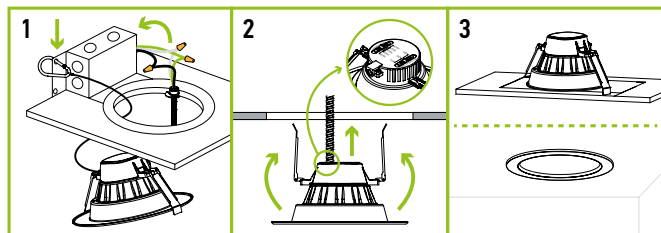
IMPORTANT SAFETY INFORMATION:

Please read all the instructions below before installation.

- ▶ Make sure that the supply voltage corresponds to the rated product voltage.
- ▶ The product must be installed by a qualified electrician in accordance with the National Electrical Code and corresponding local codes.
- ▶ If the product is damaged, do not use it.

INSTALLATION STEPS:

1. Secure the safety latch onto a structural part of the original fixture housing above the ceiling. Connect the wires using wire nuts: Black to Black, White to White, Green to Green.
2. Before inserting the fixture into the mounting surface opening, choose power and color temperature with a simple switch. Fold up the two spring mounting tabs and release as the fixture is placed into the mounting surface.
3. Ensure that the spring mounting tabs have securely mounted the fixture so that the front trim is flush against the mounting surface.



⚠ WARNING

RISK OF PERSONAL INJURY – READ and follow all WARNINGS and installation instructions.

Keep or give to the owner for future reference.

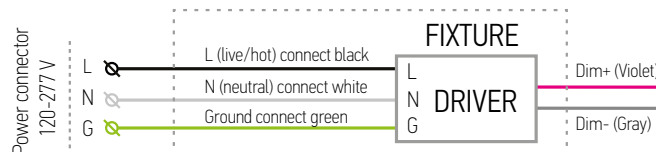
Risk of cuts: Wear gloves to prevent cuts or abrasions when removing from carton, handling, installing, and maintaining this product.

Risk of electric shock: This product must be installed in accordance with the applicable installation code by a person familiar with the construction and operation of the product and the hazards involved.

Risk of Fire: Minimum 194°F supply conductors. Consult a qualified electrician to ensure correct branch circuit conductor.

ASD® assumes no responsibility for claims arising out of improper or careless installation or handling of this product.

ELECTRICAL SCHEMATIC DIAGRAM:



For most up-to-date spec sheets please refer to asd-lighting.com



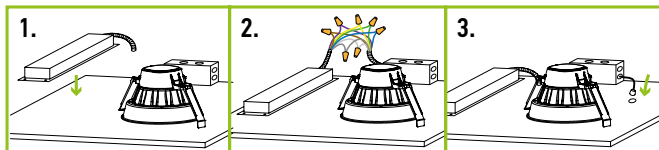
LED COMMERCIAL DOWNLIGHT

EMERGENCY BACK-UP POWER SUPPLY INFORMATION **BLD-HM15D** sold separately:

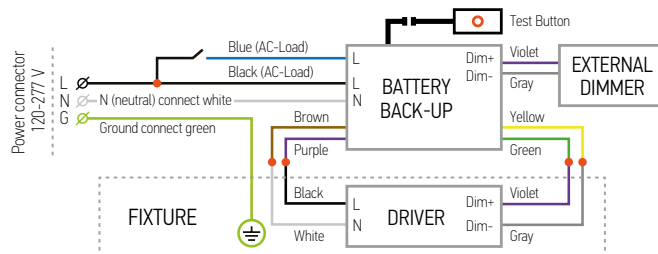
Specifications	
Input voltage	100-347 Vac, 50/60 Hz
Input current	≤ 100 mA
Input power	8 W max
Output voltage	≤ 175 V DC
Output power	15 W
Application	< 150 W (0/1-10 V Dimmable fixture)
Ambient temperature	0°C to 50°C (30°F to 122°F)

INSTALLATION STEPS FOR BATTERY BACK-UP:

1. Secure the emergency back-up to the ceiling (brackets not included).
2. Connect wires as shown on electrical diagram.
3. Connect test switch and affix it in the hole on surface.



ELECTRICAL SCHEMATIC DIAGRAM WITH BATTERY BACK-UP:



For most up-to-date spec sheets please refer to asd-lighting.com