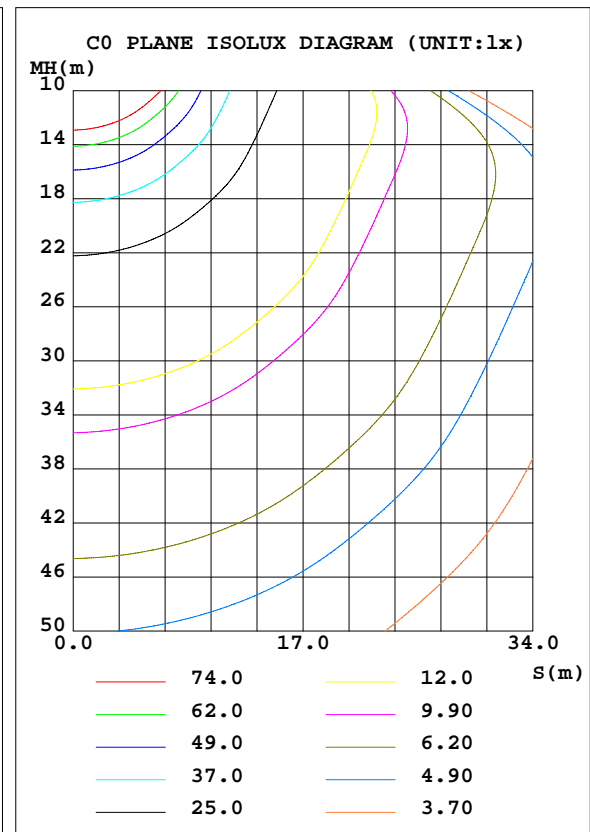
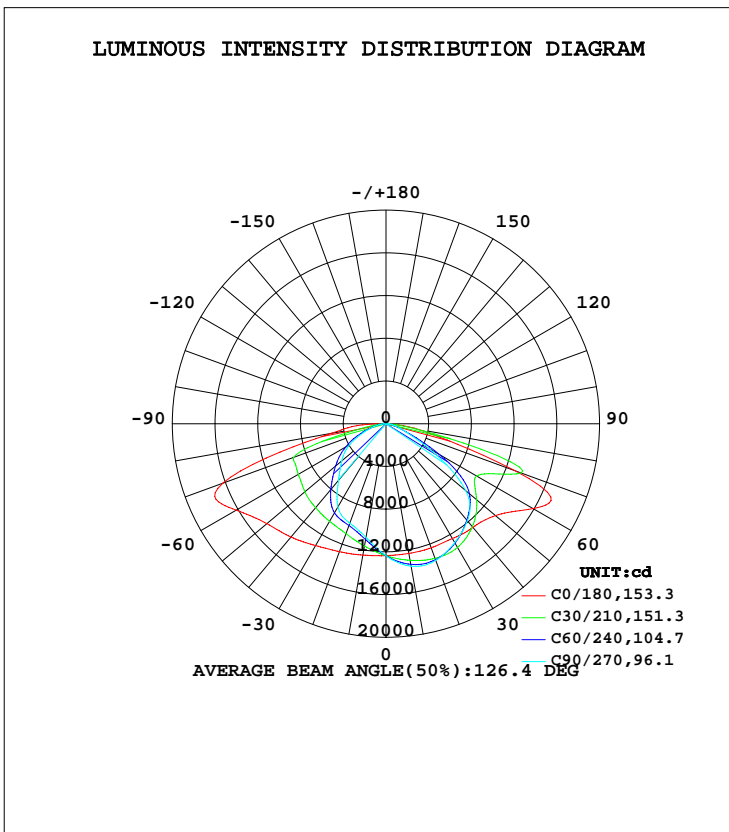


LUMINAIRE PHOTOMETRIC TEST REPORT

Test:U:120.00V I:2.5383A P:304.08W PF:0.9983 Freq:60.00Hz Lamp Flux:46990.7x1 lm		
NAME: LED AREA LIGHT	TYPE: LED	WEIGHT:
SPEC.:	DIM.:	SERIAL No.:
MFR.: ASD Lighting Corp	SUR.:	Shielding Angle:

DATA OF LAMP		PHOTOMETRIC DATA Eff: 154.53 lm/W			
MODEL	ASD-LSB2-300DAC-BR	I <sub>max</sub> (cd)	17418	S/MH(C0/180)	1.70
NOMINAL POWER(W)	300	LOR(%)	100.0	S/MH(C90/270)	1.10
RATED VOLTAGE(V)	120-277	TOTAL FLUX(lm)	46991	η UP, DN(C0-180)	0.0,56.0
NOMINAL FLUX(lm)	46990.7	CIE CLASS	DIRECT	η UP, DN(C180-360)	0.0,44.0
LAMPS INSIDE	1	η up(%)	0.0	CIBSE SHR NOM	1.50
TEST VOLTAGE(V)	120	η down(%)	100.0	CIBSE SHR MAX	1.55



C Range: 0 - 360DEG  
 C Interval: 15.0DEG  
 Test Speed: HIGH  
 Temperature: 25.1DEG  
 Operators: Alan Wang  
 Test Date: 20 August 2022

γ Range: 0 - 180DEG  
 γ Interval: 1.0DEG  
 Test System: EVERFINE GO-R5000\_V2 SYSTEM V2.00.416  
 Humidity: 45.3%  
 Test Distance: 2.500m [K=1.0449]  
 Remarks:

## ZONAL FLUX DIAGRAM

## ZONAL FLUX DIAGRAM:

$\gamma$	C0	C45	C90	C135	C180	C225	C270	C315	$\gamma$	$\Phi$ zone	$\Phi$ total	%lum, lamp
10	1233	1321	1353	1341	1249	1128	1081	1124	0- 10	1176	1176	2.5,2.5
20	1237	1354	1362	1402	1275	1043	990.9	1038	10- 20	3460	4636	9.87,9.87
30	1242	1314	1286	1389	1318	1003	900.2	973.7	20- 30	5537	10173	21.6,21.6
40	1267	1198	1186	1289	1385	934.2	691.8	891.2	30- 40	7151	17324	36.9,36.9
50	1339	1050	975.3	1133	1456	779.3	541.0	732.4	40- 50	8092	25416	54.1,54.1
60	1589	853.5	464.3	970.6	1619	547.9	391.6	503.2	50- 60	8206	33622	71.6,71.6
70	1283	302.6	164.3	549.4	1624	296.8	205.1	243.8	60- 70	7745	41367	88,88
80	310.6	69.36	63.75	118.1	517.0	98.34	77.17	63.93	70- 80	4615	45982	97.9,97.9
90	0	0	0	0	0	0	0	0	80- 90	1008	46991	100,100
100	0	0	0	0	0	0	0	0	90-100	0	46991	100,100
110	0	0	0	0	0	0	0	0	100-110	0	46991	100,100
120	0	0	0	0	0	0	0	0	110-120	0	46991	100,100
130	0	0	0	0	0	0	0	0	120-130	0	46991	100,100
140	0	0	0	0	0	0	0	0	130-140	0	46991	100,100
150	0	0	0	0	0	0	0	0	140-150	0	46991	100,100
160	0	0	0	0	0	0	0	0	150-160	0	46991	100,100
170	0	0	0	0	0	0	0	0	160-170	0	46991	100,100
180	0	0	0	0	0	0	0	0	170-180	0	46991	100,100
DEG	LUMINOUS INTENSITY:×10cd									UNIT:lm		

Conical surface Flux(90deg): 21296 lm

%lum = 45.3%

%lamp = 45.3%

Conical surface Flux(120deg): 33622 lm

%lum = 71.6%

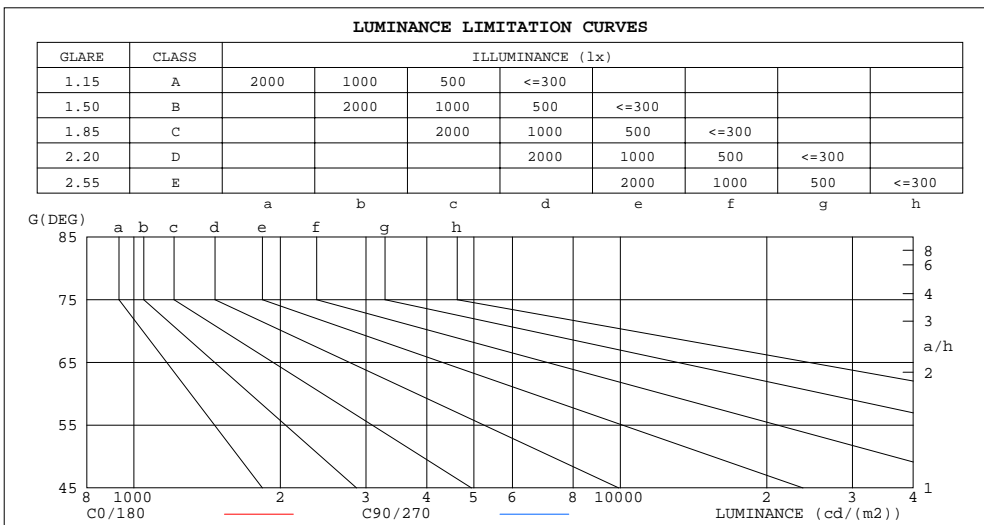
%lamp = 71.6%

C Range: 0 - 360DEG  
 C Interval: 15.0DEG  
 Test Speed: HIGH  
 Temperature: 25.1DEG  
 Operators: Alan Wang  
 Test Date: 20 August 2022

$\gamma$  Range: 0 - 180DEG  
 $\gamma$  Interval: 1.0DEG  
 Test System: EVERFINE GO-R5000\_V2 SYSTEM V2.00.416  
 Humidity: 45.3%  
 Test Distance: 2.500m [K=1.0449]  
 Remarks:

LUMINANCE LIMITATION CURVES

Test:U:120.00V I:2.5383A P:304.08W PF:0.9983 Freq:60.00Hz Lamp Flux:46990.7x1 lm		
NAME: LED AREA LIGHT	TYPE: LED	WEIGHT:
SPEC.:	DIM.:	SERIAL No.:
MFR.: ASD Lighting Corp	SUR.:	Shielding Angle:



LUMINANCE cd/(m2)		
G(DEG)	C0/180	C90/270
85	119344	40482
80	212931	43702
75	273573	48094
70	446678	57183
65	480172	74251
60	378328	110553
55	298513	152746
50	247979	180631
45	216658	187479

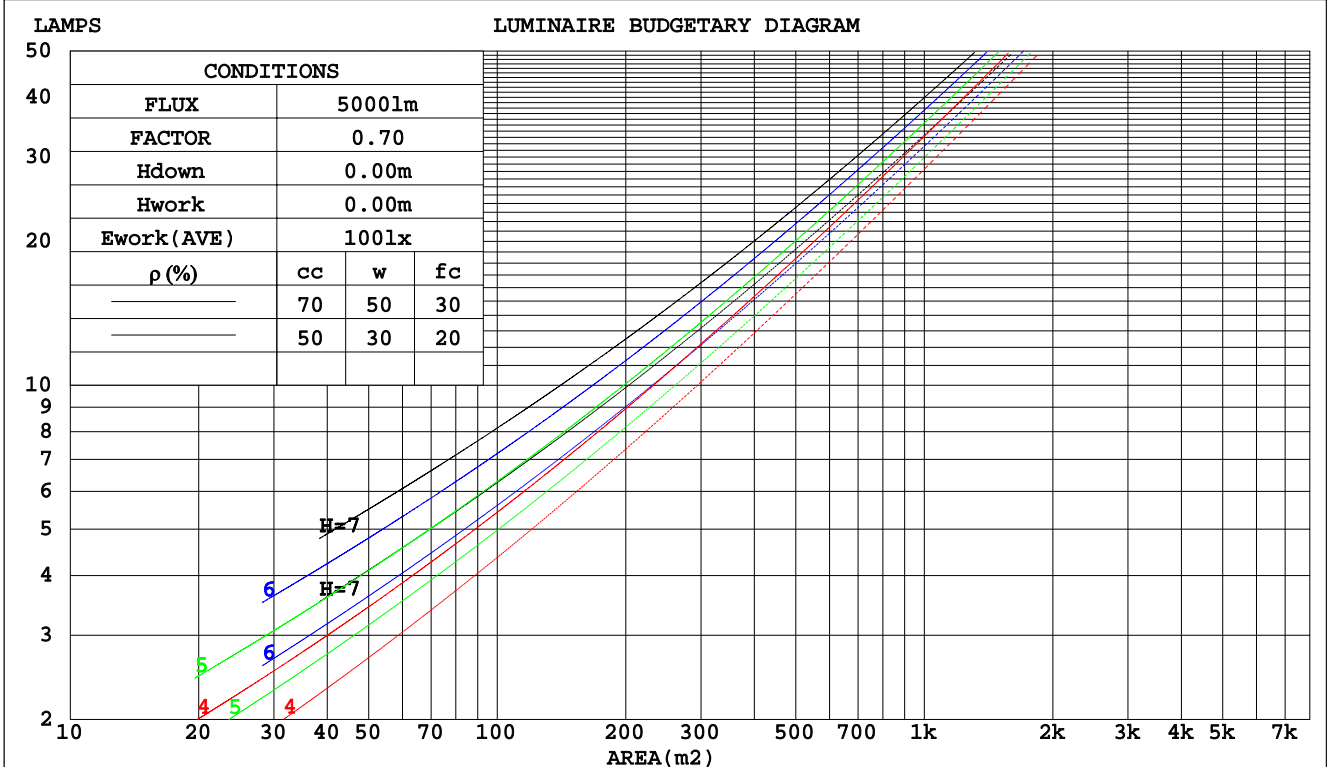
C Range: 0 - 360DEG  
 C Interval: 15.0DEG  
 Test Speed: HIGH  
 Temperature: 25.1DEG  
 Operators: Alan Wang  
 Test Date: 20 August 2022

$\gamma$  Range: 0 - 180DEG  
 $\gamma$  Interval: 1.0DEG  
 Test System: EVERFINE GO-R5000\_V2 SYSTEM V2.00.416  
 Humidity: 45.3%  
 Test Distance: 2.500m [K=1.0449]  
 Remarks:

CU AND LUMINAIRE BUDGETARY ESTIMATE DIAGRAM

Test:U:120.00V I:2.5383A P:304.08W PF:0.9983 Freq:60.00Hz Lamp Flux:46990.7x1 lm		
NAME: LED AREA LIGHT	TYPE: LED	WEIGHT:
SPEC.:	DIM.:	SERIAL No.:
MFR.: ASD Lighting Corp	SUR.:	Shielding Angle:

pcc	80%			70%			50%			30%			10%			0
pw	50%	30%	10%	50%	30%	10%	50%	30%	10%	50%	30%	10%	50%	30%	10%	0
pfc	20%			20%			20%			20%			20%			0
RCR	RCR:Room Cavity Ratio						Coefficients of Utilization(CU)									
0.0	1.19	1.19	1.19	1.16	1.16	1.16	1.11	1.11	1.11	1.06	1.06	1.06	1.02	1.02	1.02	1.00
1.0	1.02	.98	.93	.00	.96	.92	.96	.92	.89	.92	.89	.86	.88	.86	.83	.81
2.0	.88	.80	.74	.86	.79	.73	.82	.76	.71	.79	.74	.69	.76	.71	.68	.66
3.0	.76	.67	.60	.74	.66	.59	.71	.64	.58	.68	.62	.57	.66	.60	.56	.54
4.0	.66	.57	.50	.65	.56	.49	.62	.55	.48	.60	.53	.48	.58	.52	.47	.45
5.0	.59	.49	.42	.58	.48	.42	.55	.47	.41	.53	.46	.41	.51	.45	.40	.38
6.0	.52	.43	.36	.51	.42	.36	.50	.42	.35	.48	.41	.35	.46	.40	.35	.33
7.0	.47	.38	.31	.46	.38	.31	.45	.37	.31	.43	.36	.31	.42	.35	.31	.28
8.0	.43	.34	.28	.42	.34	.28	.41	.33	.27	.39	.32	.27	.38	.32	.27	.25
9.0	.39	.31	.25	.39	.30	.25	.37	.30	.24	.36	.29	.24	.35	.29	.24	.22
10.0	.36	.28	.22	.35	.28	.22	.34	.27	.22	.33	.27	.22	.33	.26	.22	.20



C Range: 0 - 360DEG  
 C Interval: 15.0DEG  
 Test Speed: HIGH  
 Temperature: 25.1DEG  
 Operators: Alan Wang  
 Test Date: 20 August 2022

γ Range: 0 - 180DEG  
 γ Interval: 1.0DEG  
 Test System: EVERFINE GO-R5000\_V2 SYSTEM V2.00.416  
 Humidity: 45.3%  
 Test Distance: 2.500m [K=1.0449]  
 Remarks:

WEC AND CCEC

Test:U:120.00V I:2.5383A P:304.08W PF:0.9983 Freq:60.00Hz Lamp Flux:46990.7x1 lm		
NAME: LED AREA LIGHT	TYPE: LED	WEIGHT:
SPEC.:	DIM.:	SERIAL No.:
MFR.: ASD Lighting Corp	SUR.:	Shielding Angle:

ρcc	80%			70%			50%			30%			10%			0
ρw	50%	30%	10%	50%	30%	10%	50%	30%	10%	50%	30%	10%	50%	30%	10%	0
ρfc	20%			20%			20%			20%			20%			0
RCR	RCR:Room Cavity Ratio						Wall Exitance Coefficients(WEC)									
0.0																
1.0	.341	.194	.061	.334	.190	.060	.320	.184	.059	.308	.178	.057	.297	.172	.055	
2.0	.319	.175	.054	.313	.172	.053	.301	.167	.052	.290	.163	.051	.280	.158	.050	
3.0	.293	.156	.047	.287	.154	.046	.277	.150	.046	.267	.146	.045	.258	.143	.044	
4.0	.268	.139	.041	.263	.138	.041	.254	.135	.040	.245	.131	.040	.237	.129	.039	
5.0	.246	.125	.036	.242	.124	.036	.233	.121	.036	.225	.119	.035	.218	.117	.035	
6.0	.227	.114	.033	.223	.112	.032	.215	.110	.032	.208	.108	.032	.202	.106	.032	
7.0	.210	.104	.029	.206	.103	.029	.200	.101	.029	.193	.099	.029	.187	.097	.029	
8.0	.195	.095	.027	.192	.094	.027	.186	.093	.027	.180	.091	.026	.175	.090	.026	
9.0	.182	.088	.025	.179	.087	.024	.174	.086	.024	.169	.085	.024	.164	.083	.024	
10.0	.170	.082	.023	.168	.081	.023	.163	.080	.023	.159	.079	.022	.154	.078	.022	

ρcc	80%			70%			50%			30%			10%			0
ρw	50%	30%	10%	50%	30%	10%	50%	30%	10%	50%	30%	10%	50%	30%	10%	0
ρfc	20%			20%			20%			20%			20%			0
RCR	RCR:Room Cavity Ratio						Ceiling Cavity Exitance Coefficients(CCEC)									
0.0	.190	.190	.190	.163	.163	.163	.111	.111	.111	.064	.064	.064	.020	.020	.020	
1.0	.182	.156	.132	.156	.134	.114	.107	.092	.079	.061	.053	.046	.020	.017	.015	
2.0	.176	.132	.095	.151	.113	.082	.103	.078	.057	.060	.046	.033	.019	.015	.011	
3.0	.169	.114	.071	.145	.099	.062	.099	.069	.043	.057	.040	.025	.018	.013	.008	
4.0	.162	.101	.055	.139	.088	.048	.095	.061	.034	.055	.036	.020	.018	.012	.007	
5.0	.154	.091	.045	.132	.079	.039	.091	.055	.028	.053	.032	.016	.017	.011	.005	
6.0	.147	.083	.037	.126	.072	.032	.087	.050	.023	.050	.030	.014	.016	.010	.005	
7.0	.140	.076	.032	.120	.066	.028	.083	.046	.020	.048	.027	.012	.016	.009	.004	
8.0	.133	.070	.028	.114	.061	.024	.079	.043	.017	.046	.025	.010	.015	.008	.003	
9.0	.126	.065	.024	.109	.057	.021	.075	.040	.015	.044	.024	.009	.014	.008	.003	
10.0	.120	.061	.022	.104	.053	.019	.072	.037	.013	.042	.022	.008	.014	.007	.003	

C Range: 0 - 360DEG  
 C Interval: 15.0DEG  
 Test Speed: HIGH  
 Temperature: 25.1DEG  
 Operators: Alan Wang  
 Test Date: 20 August 2022

γ Range: 0 - 180DEG  
 γ Interval: 1.0DEG  
 Test System: EVERFINE GO-R5000\_V2 SYSTEM V2.00.416  
 Humidity: 45.3%  
 Test Distance: 2.500m [K=1.0449]  
 Remarks:

UGR(Unified Glare Rating) Table

Test:U:120.00V I:2.5383A P:304.08W PF:0.9983 Freq:60.00Hz Lamp Flux:46990.7x1 lm										
NAME: LED AREA LIGHT					TYPE: LED			WEIGHT:		
SPEC.:					DIM.:			SERIAL No.:		
MFR.: ASD Lighting Corp					SUR.:			Shielding Angle:		
ceiling/cavity	0.7	0.7	0.5	0.5	0.3	0.7	0.7	0.5	0.5	0.3
walls	0.5	0.3	0.5	0.3	0.3	0.5	0.3	0.5	0.3	0.3
working plane	0.2	0.2	0.2	0.2	0.2	0.2	0.2	0.2	0.2	0.2
Room dimensions	Viewed crosswise					Viewed endwise				
x = 2H y = 2H	33.4	35.1	33.7	35.4	35.8	29.1	30.8	29.4	31.1	31.5
3H	38.0	39.6	38.4	39.9	40.3	29.4	31.0	29.8	31.4	31.7
4H	38.5	40.0	38.9	40.4	40.8	29.6	31.1	30.0	31.4	31.8
6H	38.8	40.2	39.3	40.6	41.0	29.7	31.1	30.1	31.4	31.8
8H	38.9	40.3	39.4	40.7	41.1	29.7	31.1	30.1	31.4	31.8
12H	39.0	40.3	39.4	40.7	41.1	29.7	31.0	30.2	31.4	31.8
4H 2H	33.6	35.1	34.0	35.4	35.8	30.8	32.3	31.2	32.6	33.0
3H	38.9	40.1	39.3	40.5	40.9	31.1	32.4	31.5	32.8	33.2
4H	39.6	40.8	40.1	41.2	41.6	31.2	32.4	31.7	32.8	33.2
6H	40.1	41.1	40.5	41.5	42.0	31.4	32.4	31.8	32.8	33.3
8H	40.2	41.2	40.7	41.6	42.1	31.4	32.4	31.9	32.8	33.3
12H	40.3	41.2	40.8	41.6	42.1	31.4	32.3	31.9	32.8	33.2
8H 4H	39.6	40.6	40.1	41.0	41.5	33.6	34.6	34.1	35.0	35.5
6H	40.1	40.9	40.6	41.4	41.9	33.7	34.5	34.2	35.0	35.4
8H	40.4	41.1	40.9	41.6	42.1	33.7	34.4	34.2	34.9	35.4
12H	40.5	41.1	41.0	41.6	42.2	33.7	34.4	34.2	34.9	35.4
12H 4H	39.6	40.5	40.1	41.0	41.4	34.2	35.1	34.7	35.5	36.0
6H	40.1	40.8	40.6	41.3	41.8	34.3	35.0	34.8	35.5	36.0
8H	40.4	41.0	40.9	41.5	42.0	34.3	35.0	34.8	35.4	36.0
CIE190: 2010										

CIE190: 2010  
Area: 0.084 m2

C Range: 0 - 360DEG  
C Interval: 15.0DEG  
Test Speed: HIGH  
Temperature: 25.1DEG  
Operators: Alan Wang  
Test Date: 20 August 2022

γ Range: 0 - 180DEG  
γ Interval: 1.0DEG  
Test System: EVERFINE GO-R5000\_V2 SYSTEM V2.00.416  
Humidity: 45.3%  
Test Distance: 2.500m [K=1.0449]  
Remarks:

## UTILIZATION FACTORS TABLE

Test:U:120.00V I:2.5383A P:304.08W PF:0.9983 Freq:60.00Hz Lamp Flux:46990.7x1 lm		
NAME: LED AREA LIGHT	TYPE: LED	WEIGHT:
SPEC.:	DIM.:	SERIAL No.:
MFR.: ASD Lighting Corp	SUR.:	Shielding Angle:

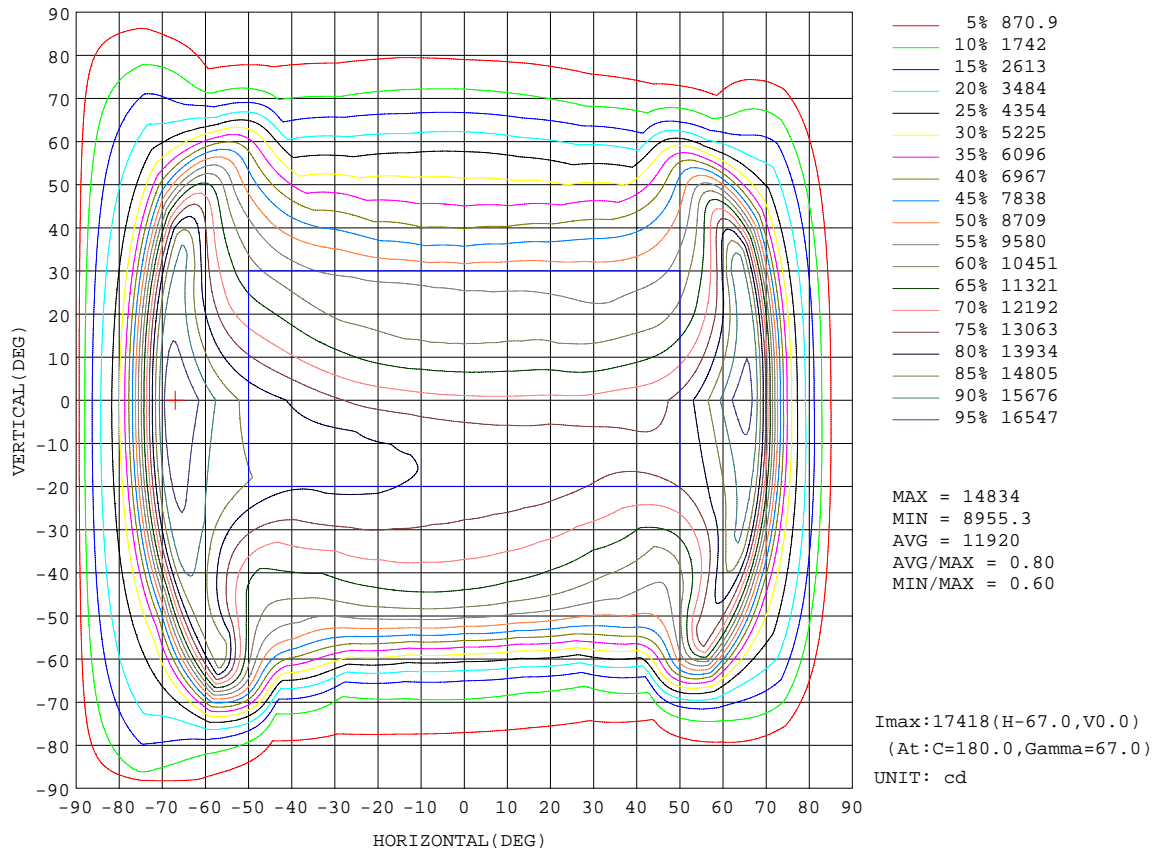
REFLECTANCE										
Ceiling	0.8	0.8	0.8	0.7	0.7	0.7	0.5	0.5	0.5	0
Walls	0.7	0.5	0.3	0.7	0.5	0.3	0.7	0.5	0.3	0
Working plane	0.2	0.2	0.2	0.2	0.2	0.2	0.2	0.2	0.2	0
ROOM INDEX	UTILIZATION FACTORS(PERCENT) $k(RI) \times RCR = 5$									
k = 0.60	53	41	34	53	41	33	51	40	33	26
0.80	63	51	43	62	50	43	60	49	42	35
1.00	72	60	51	70	59	51	68	61	51	43
1.25	79	67	60	77	67	59	75	65	58	50
1.50	84	73	66	83	72	65	79	71	64	56
2.00	92	82	75	90	81	74	86	79	73	64
2.50	96	88	81	94	86	80	90	84	78	69
3.00	100	92	86	98	91	85	94	88	83	74
4.00	105	98	93	102	97	92	98	93	89	80
5.00	107	102	98	105	100	96	100	97	93	84
ROOM INDEX	UF(total)									Direct
According to DIN EN 13032-2 2004			Suspended				SHRNOM = 1.25			

C Range: 0 - 360DEG  
 C Interval: 15.0DEG  
 Test Speed: HIGH  
 Temperature: 25.1DEG  
 Operators: Alan Wang  
 Test Date: 20 August 2022

$\gamma$  Range: 0 - 180DEG  
 $\gamma$  Interval: 1.0DEG  
 Test System: EVERFINE GO-R5000\_V2 SYSTEM V2.00.416  
 Humidity: 45.3%  
 Test Distance: 2.500m [K=1.0449]  
 Remarks:

ISOCANDELA DIAGRAM

Test:U:120.00V I:2.5383A P:304.08W PF:0.9983 Freq:60.00Hz Lamp Flux:46990.7x1 lm		
NAME: LED AREA LIGHT	TYPE: LED	WEIGHT:
SPEC.:	DIM.:	SERIAL No.:
MFR.: ASD Lighting Corp	SUR.:	Shielding Angle:



C Range: 0 - 360DEG  
 C Interval: 15.0DEG  
 Test Speed: HIGH  
 Temperature: 25.1DEG  
 Operators: Alan Wang  
 Test Date: 20 August 2022

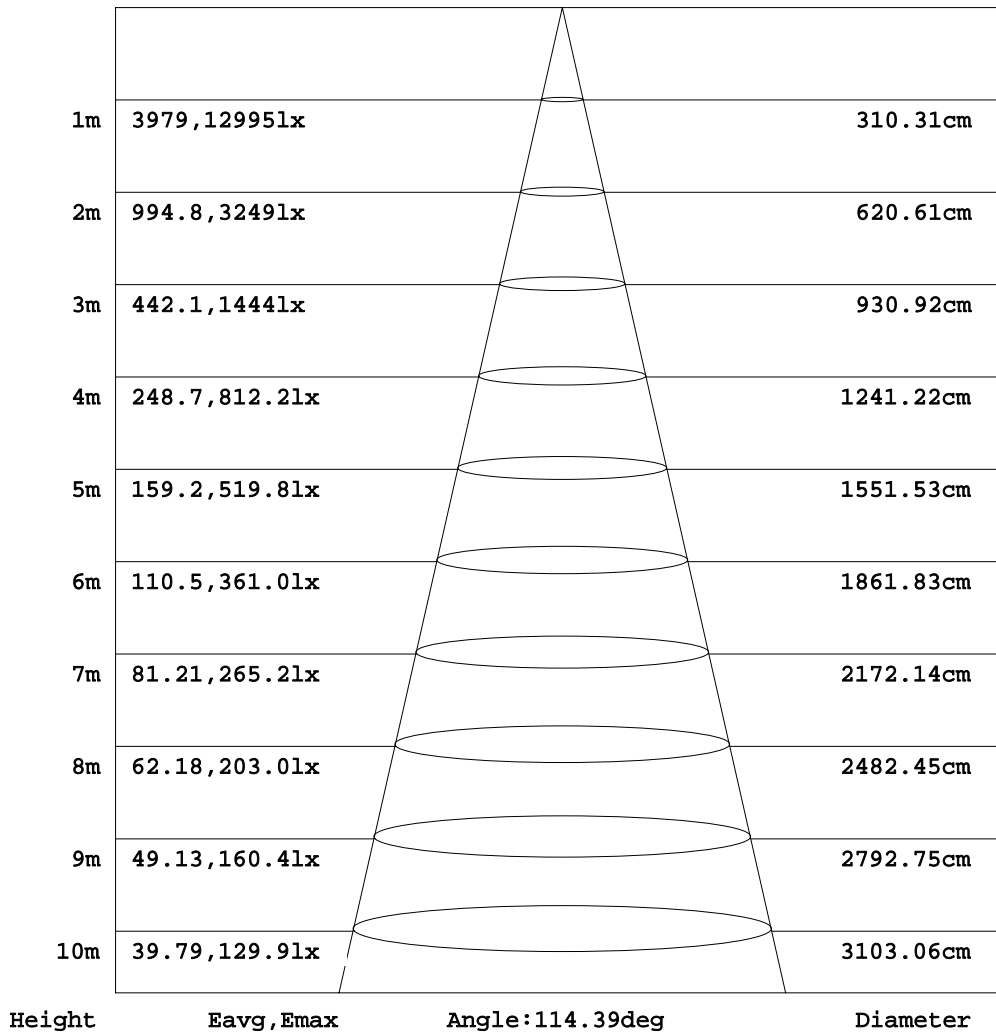
γ Range: 0 - 180DEG  
 γ Interval: 1.0DEG  
 Test System: EVERFINE GO-R5000\_V2 SYSTEM V2.00.416  
 Humidity: 45.3%  
 Test Distance: 2.500m [K=1.0449]  
 Remarks:



AAI Figure

Test:U:120.00V I:2.5383A P:304.08W PF:0.9983 Freq:60.00Hz Lamp Flux:46990.7x1 lm		
NAME: LED AREA LIGHT	TYPE: LED	WEIGHT:
SPEC.:	DIM.:	SERIAL No.:
MFR.: ASD Lighting Corp	SUR.:	Shielding Angle:

Flux out:32017 lm



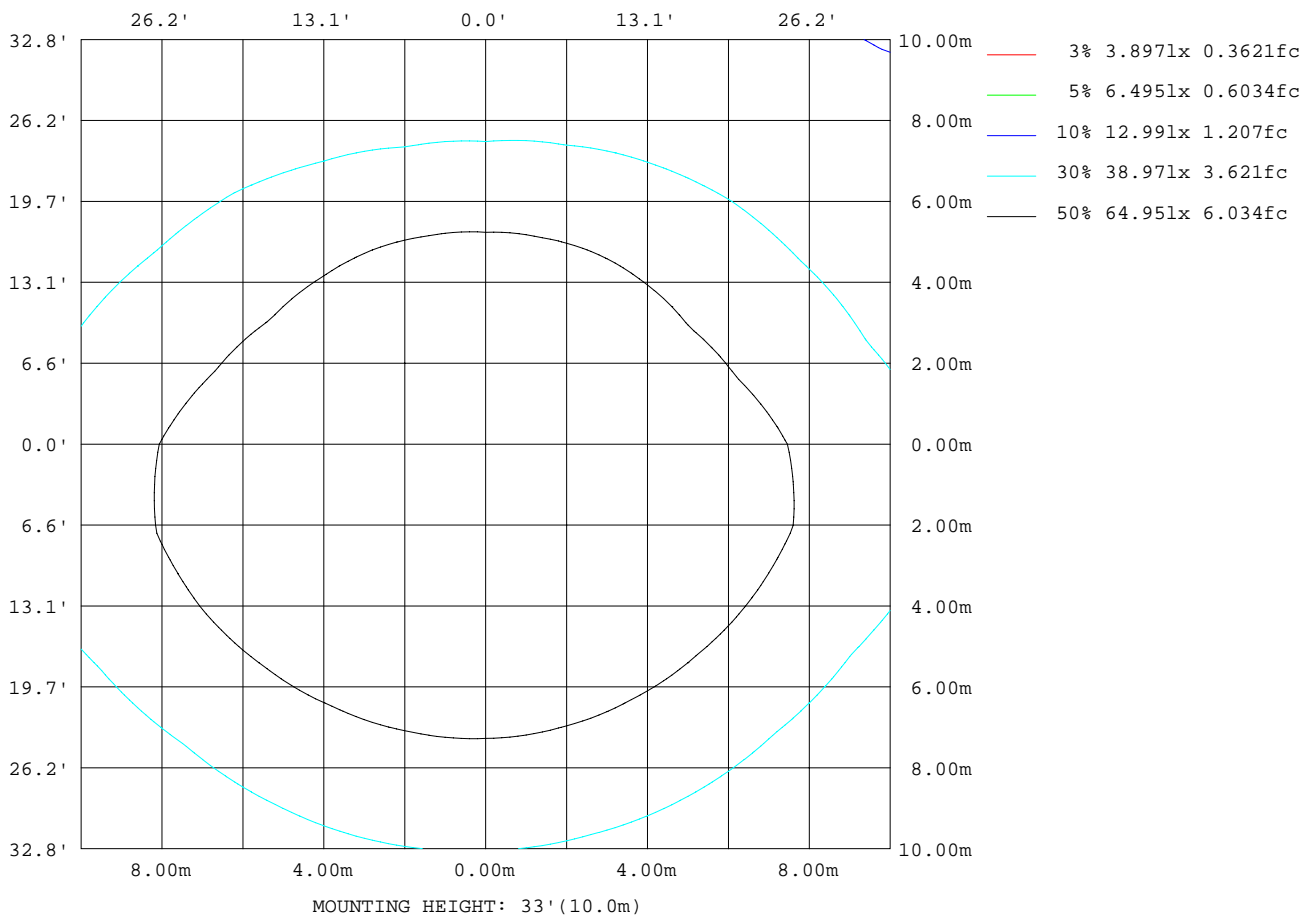
Note:The Curves indicate the illuminated area and the average illumination when the luminaire is at different distance.

C Range: 0 - 360DEG  
 C Interval: 15.0DEG  
 Test Speed: HIGH  
 Temperature: 25.1DEG  
 Operators:Alan Wang  
 Test Date:20 August 2022

γ Range: 0 - 180DEG  
 γ Interval: 1.0DEG  
 Test System:EVERFINE GO-R5000\_V2 SYSTEM V2.00.416  
 Humidity: 45.3%  
 Test Distance:2.500m [K=1.0449]  
 Remarks:

ISOLUX DIAGRAM

Test:U:120.00V I:2.5383A P:304.08W PF:0.9983 Freq:60.00Hz Lamp Flux:46990.7x1 lm		
NAME: LED AREA LIGHT	TYPE: LED	WEIGHT:
SPEC.:	DIM.:	SERIAL No.:
MFR.: ASD Lighting Corp	SUR.:	Shielding Angle:



C Range: 0 - 360DEG  
 C Interval: 15.0DEG  
 Test Speed: HIGH  
 Temperature: 25.1DEG  
 Operators: Alan Wang  
 Test Date: 20 August 2022

γ Range: 0 - 180DEG  
 γ Interval: 1.0DEG  
 Test System: EVERFINE GO-R5000\_V2 SYSTEM V2.00.416  
 Humidity: 45.3%  
 Test Distance: 2.500m [K=1.0449]  
 Remarks:

## LED Avg.L Report

Test:U:120.00V I:2.5383A P:304.08W PF:0.9983 Freq:60.00Hz Lamp Flux:46990.7x1 lm		
NAME: LED AREA LIGHT	TYPE: LED	WEIGHT:
SPEC.:	DIM.:	SERIAL No.:
MFR.: ASD Lighting Corp	SUR.:	Shielding Angle:

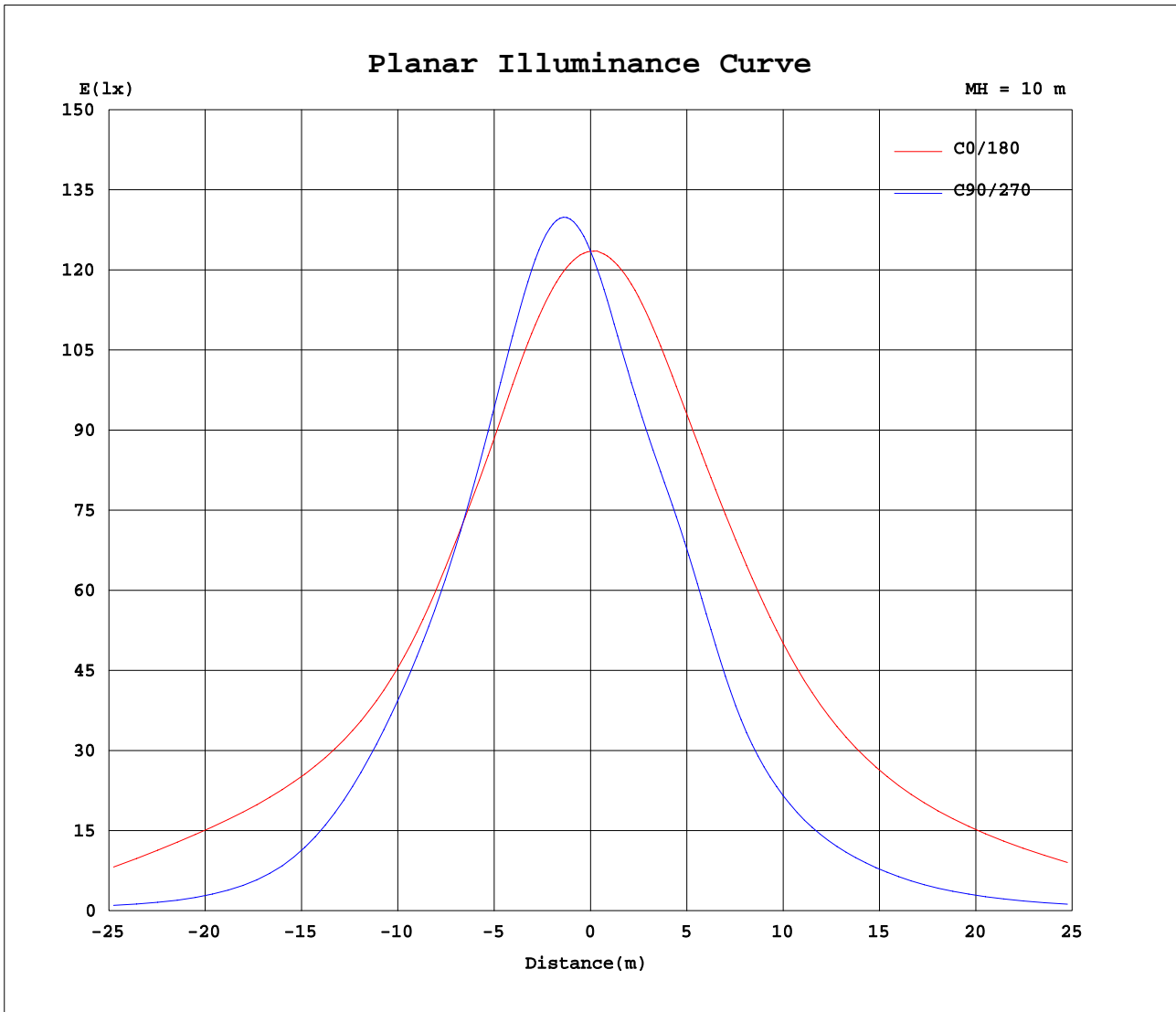
AvgL	cd/m2
L_0~180(65)av	483842
L_0~180(75)av	373128
L_0~180(85)av	278740
L_90~270(65)av	78703
L_90~270(75)av	55813
L_90~270(85)av	37611
L_45(65)av	157501
L_45(75)av	83163
L_45(85)av	47538

Standard: GB/T 29293-2012

C Range: 0 - 360DEG  
C Interval: 15.0DEG  
Test Speed: HIGH  
Temperature: 25.1DEG  
Operators: Alan Wang  
Test Date: 20 August 2022

$\gamma$  Range: 0 - 180DEG  
 $\gamma$  Interval: 1.0DEG  
Test System: EVERFINE GO-R5000\_V2 SYSTEM V2.00.416  
Humidity: 45.3%  
Test Distance: 2.500m [K=1.0449]  
Remarks:

Planar Illuminance Curve



C Range: 0 - 360DEG  
 C Interval: 15.0DEG  
 Test Speed: HIGH  
 Temperature: 25.1DEG  
 Operators: Alan Wang  
 Test Date: 20 August 2022

$\gamma$  Range: 0 - 180DEG  
 $\gamma$  Interval: 1.0DEG  
 Test System: EVERFINE GO-R5000\_V2 SYSTEM V2.00.416  
 Humidity: 45.3%  
 Test Distance: 2.500m [K=1.0449]  
 Remarks:

LUMINOUS DISTRIBUTION INTENSITY DATA

Test:U:120.00V I:2.5383A P:304.08W PF:0.9983 Freq:60.00Hz Lamp Flux:46990.7x1 lm		
NAME: LED AREA LIGHT	TYPE: LED	WEIGHT:
SPEC.:	DIM.:	SERIAL No.:
MFR.: ASD Lighting Corp	SUR.:	Shielding Angle:

Table--1

UNIT: x10cd

C(DEG) γ (DEG)	0	15	30	45	60	75	90	105	120	135	150	165	180	195	210	225	240	255	270
0	1235	1235	1235	1235	1235	1235	1235	1235	1235	1235	1235	1235	1235	1235	1235	1235	1235	1235	1235
5	1233	1252	1269	1283	1294	1302	1305	1305	1300	1291	1278	1261	1240	1219	1199	1182	1169	1160	1156
10	1233	1269	1299	1321	1337	1347	1353	1355	1352	1341	1320	1290	1249	1205	1163	1128	1102	1086	1081
15	1235	1287	1324	1346	1358	1366	1373	1379	1383	1379	1361	1322	1261	1192	1128	1080	1048	1032	1026
20	1237	1305	1341	1354	1355	1356	1362	1374	1390	1402	1395	1354	1275	1178	1096	1043	1014	998	991
25	1235	1319	1349	1344	1331	1325	1329	1346	1374	1407	1420	1386	1292	1169	1072	1020	994	973	961
30	1242	1332	1339	1314	1291	1282	1286	1303	1338	1389	1430	1417	1318	1168	1056	1003	964	921	900
35	1257	1339	1306	1264	1240	1233	1239	1255	1289	1349	1415	1440	1350	1171	1041	977	899	823	799
40	1267	1337	1258	1198	1178	1175	1186	1204	1232	1289	1378	1452	1385	1177	1026	934	804	716	692
45	1287	1332	1193	1125	1110	1101	1114	1140	1167	1214	1325	1463	1417	1187	1012	869	705	633	610
50	1339	1328	1108	1050	1020	976	975	1023	1085	1133	1255	1476	1456	1191	992	779	616	558	541
55	1438	1335	1015	971	853	751	736	804	945	1053	1176	1491	1521	1202	966	670	531	489	476
60	1589	1383	981	854	581	470	464	519	704	971	1120	1518	1619	1259	948	548	437	402	392
65	1705	1504	1109	600	313	259	264	296	409	830	1168	1589	1731	1404	931	428	336	303	295
70	1283	1432	1348	303	157	152	164	172	206	549	1395	1617	1624	1579	918	297	231	212	205
75	595	700	923	147	98.3	99.1	105	112	122	263	1505	1109	1028	1070	565	180	138	144	138
80	311	411	287	69.4	58.1	60.1	63.7	69.4	78.8	118	742	516	517	488	189	98.3	84.5	84.7	77.2
85	87.4	151	75.3	23.2	22.2	25.8	29.6	33.6	39.1	53.9	220	364	321	257	61.9	44.5	37.8	28.7	25.4
90	0.00	0.00	0.00	0.00	0.00	0.00	0.00	0.00	0.00	0.00	0.00	0.00	0.00	0.00	0.00	0.00	0.00	0.00	0.00
95	0.00	0.00	0.00	0.00	0.00	0.00	0.00	0.00	0.00	0.00	0.00	0.00	0.00	0.00	0.00	0.00	0.00	0.00	0.00
100	0.00	0.00	0.00	0.00	0.00	0.00	0.00	0.00	0.00	0.00	0.00	0.00	0.00	0.00	0.00	0.00	0.00	0.00	0.00
105	0.00	0.00	0.00	0.00	0.00	0.00	0.00	0.00	0.00	0.00	0.00	0.00	0.00	0.00	0.00	0.00	0.00	0.00	0.00
110	0.00	0.00	0.00	0.00	0.00	0.00	0.00	0.00	0.00	0.00	0.00	0.00	0.00	0.00	0.00	0.00	0.00	0.00	0.00
115	0.00	0.00	0.00	0.00	0.00	0.00	0.00	0.00	0.00	0.00	0.00	0.00	0.00	0.00	0.00	0.00	0.00	0.00	0.00
120	0.00	0.00	0.00	0.00	0.00	0.00	0.00	0.00	0.00	0.00	0.00	0.00	0.00	0.00	0.00	0.00	0.00	0.00	0.00
125	0.00	0.00	0.00	0.00	0.00	0.00	0.00	0.00	0.00	0.00	0.00	0.00	0.00	0.00	0.00	0.00	0.00	0.00	0.00
130	0.00	0.00	0.00	0.00	0.00	0.00	0.00	0.00	0.00	0.00	0.00	0.00	0.00	0.00	0.00	0.00	0.00	0.00	0.00
135	0.00	0.00	0.00	0.00	0.00	0.00	0.00	0.00	0.00	0.00	0.00	0.00	0.00	0.00	0.00	0.00	0.00	0.00	0.00
140	0.00	0.00	0.00	0.00	0.00	0.00	0.00	0.00	0.00	0.00	0.00	0.00	0.00	0.00	0.00	0.00	0.00	0.00	0.00
145	0.00	0.00	0.00	0.00	0.00	0.00	0.00	0.00	0.00	0.00	0.00	0.00	0.00	0.00	0.00	0.00	0.00	0.00	0.00
150	0.00	0.00	0.00	0.00	0.00	0.00	0.00	0.00	0.00	0.00	0.00	0.00	0.00	0.00	0.00	0.00	0.00	0.00	0.00
155	0.00	0.00	0.00	0.00	0.00	0.00	0.00	0.00	0.00	0.00	0.00	0.00	0.00	0.00	0.00	0.00	0.00	0.00	0.00
160	0.00	0.00	0.00	0.00	0.00	0.00	0.00	0.00	0.00	0.00	0.00	0.00	0.00	0.00	0.00	0.00	0.00	0.00	0.00
165	0.00	0.00	0.00	0.00	0.00	0.00	0.00	0.00	0.00	0.00	0.00	0.00	0.00	0.00	0.00	0.00	0.00	0.00	0.00
170	0.00	0.00	0.00	0.00	0.00	0.00	0.00	0.00	0.00	0.00	0.00	0.00	0.00	0.00	0.00	0.00	0.00	0.00	0.00
175	0.00	0.00	0.00	0.00	0.00	0.00	0.00	0.00	0.00	0.00	0.00	0.00	0.00	0.00	0.00	0.00	0.00	0.00	0.00
180	0.00	0.00	0.00	0.00	0.00	0.00	0.00	0.00	0.00	0.00	0.00	0.00	0.00	0.00	0.00	0.00	0.00	0.00	0.00

C Range: 0 - 360DEG  
 C Interval: 15.0DEG  
 Test Speed: HIGH  
 Temperature: 25.1DEG  
 Operators: Alan Wang  
 Test Date: 20 August 2022

γ Range: 0 - 180DEG  
 γ Interval: 1.0DEG  
 Test System: EVERFINE GO-R5000\_V2 SYSTEM V2.00.416  
 Humidity: 45.3%  
 Test Distance: 2.500m [K=1.0449]  
 Remarks:

LUMINOUS DISTRIBUTION INTENSITY DATA

Test:U:120.00V I:2.5383A P:304.08W PF:0.9983 Freq:60.00Hz Lamp Flux:46990.7x1 lm		
NAME: LED AREA LIGHT	TYPE: LED	WEIGHT:
SPEC.:	DIM.:	SERIAL No.:
MFR.: ASD Lighting Corp	SUR.:	Shielding Angle:

Table--2

UNIT: x10cd

C(DEG) γ (DEG)	285	300	315	330	345														
0	1235	1235	1235	1235	1235														
5	1158	1166	1179	1195	1214														
10	1086	1100	1124	1156	1194														
15	1031	1048	1077	1120	1175														
20	994	1009	1038	1085	1155														
25	965	980	1004	1046	1127														
30	915	948	974	1005	1099														
35	830	890	939	976	1082														
40	722	799	891	958	1072														
45	627	696	824	939	1062														
50	550	597	732	912	1065														
55	476	502	623	884	1104														
60	384	403	503	876	1220														
65	285	299	378	909	1503														
70	195	193	244	777	1406														
75	130	112	134	286	624														
80	70.6	64.6	63.9	87.6	321														
85	16.5	16.0	17.6	25.9	93.2														
90	0.00	0.00	0.00	0.00	0.00														
95	0.00	0.00	0.00	0.00	0.00														
100	0.00	0.00	0.00	0.00	0.00														
105	0.00	0.00	0.00	0.00	0.00														
110	0.00	0.00	0.00	0.00	0.00														
115	0.00	0.00	0.00	0.00	0.00														
120	0.00	0.00	0.00	0.00	0.00														
125	0.00	0.00	0.00	0.00	0.00														
130	0.00	0.00	0.00	0.00	0.00														
135	0.00	0.00	0.00	0.00	0.00														
140	0.00	0.00	0.00	0.00	0.00														
145	0.00	0.00	0.00	0.00	0.00														
150	0.00	0.00	0.00	0.00	0.00														
155	0.00	0.00	0.00	0.00	0.00														
160	0.00	0.00	0.00	0.00	0.00														
165	0.00	0.00	0.00	0.00	0.00														
170	0.00	0.00	0.00	0.00	0.00														
175	0.00	0.00	0.00	0.00	0.00														
180	0.00	0.00	0.00	0.00	0.00														

C Range: 0 - 360DEG  
 C Interval: 15.0DEG  
 Test Speed: HIGH  
 Temperature: 25.1DEG  
 Operators: Alan Wang  
 Test Date: 20 August 2022

γ Range: 0 - 180DEG  
 γ Interval: 1.0DEG  
 Test System: EVERFINE GO-R5000\_V2 SYSTEM V2.00.416  
 Humidity: 45.3%  
 Test Distance: 2.500m [K=1.0449]  
 Remarks: