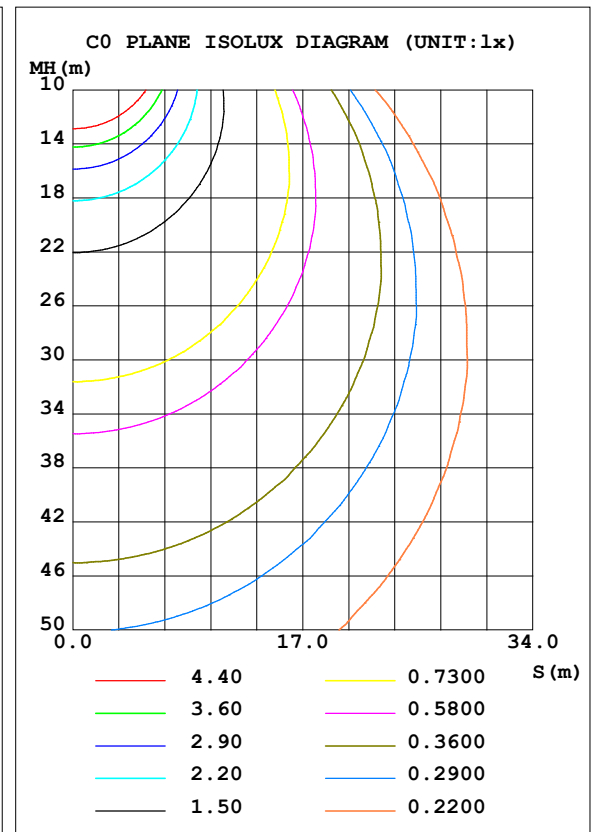
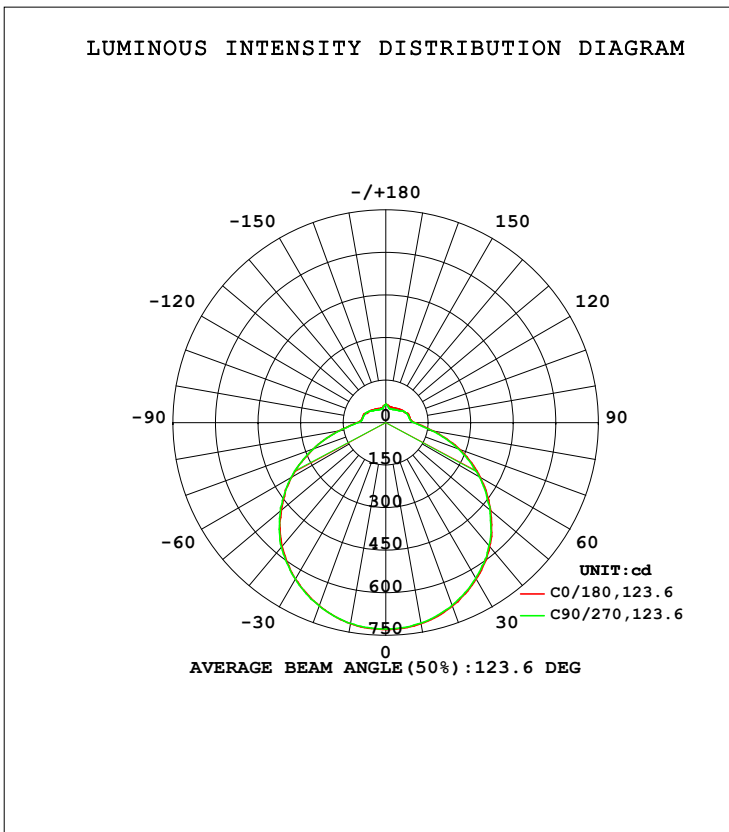


LUMINAIRE PHOTOMETRIC TEST REPORT

Test:U:120.00V I:0.3432A P:40.709W PF:0.9886 Freq:60.00Hz Lamp Flux:2900.86x1 lm		
NAME: ASD Lighting Corp	TYPE:ASD-LFC-MY-20D42S-RGB-SMARTLIGHT:	
SPEC.:ASD-LFC-MY-20D42S-RGB-SMART-2700K	DIM.:	SERIAL No.:
MFR.: ASD Lighting Corp	SUR.: -0.491	Shielding Angle:

DATA OF LAMP		PHOTOMETRIC DATA			
MODEL		Imax (cd)	730.0	S/MH (C0/180)	1.30
NOMINAL POWER (W)	--	LOR (%)	100.0	S/MH (C90/270)	1.31
RATED VOLTAGE (V)	--	TOTAL FLUX (lm)	2900.9	<input type="checkbox"/> UP, DN (C0-180)	7.9, 42.1
NOMINAL FLUX (lm)	2900.86	CIE CLASS	SEMI-D.	<input type="checkbox"/> UP, DN (C180-360)	7.8, 42.2
LAMPS INSIDE	1	<input type="checkbox"/> up (%)	15.7	CIBSE SHR NOM	1.50
TEST VOLTAGE (V)	--	<input type="checkbox"/> down (%)	84.3	CIBSE SHR MAX	1.50



C Range: 0 - 360DEG
 C Interval: 22.5DEG
 Test Speed: HIGH
 Temperature: 25.3DEG
 Operators: chen
 Test Date: 2022-10-04

Range: 0 - 180DEG
 Interval: 1.0DEG
 Test System: EVERFINE GO-3000H_V1 SYSTEM V2.00.411
 Humidity: 65.0%
 Test Distance: 8.650m [K=1.0000]
 Remarks:

ZONAL FLUX DIAGRAM

ZONAL FLUX DIAGRAM:

mm	C0	C45	C90	C135	C180	C225	C270	C315	mm	□ zone	□ total	%lum, lamp
10	719.9	718.6	717.2	716.3	719.9	718.8	718.7	718.5	0- 10	69.05	69.05	2.38,2.38
20	687.8	685.7	684.9	683.2	686.5	687.4	686.9	687.4	10- 20	199.1	268.1	9.24,9.24
30	637.6	635.6	634.0	632.6	637.7	638.1	637.9	638.5	20- 30	305.9	574.1	19.8,19.8
40	570.0	567.8	566.7	569.5	569.5	573.2	572.6	574.3	30- 40	378.6	952.7	32.8,32.8
50	483.8	480.1	478.5	479.7	480.4	480.2	485.7	485.0	40- 50	407.3	1360	46.9,46.9
60	384.2	382.3	381.3	382.1	381.7	380.9	384.6	387.1	50- 60	387.7	1748	60.2,60.2
70	278.7	275.7	272.6	272.8	271.5	271.6	272.2	279.3	60- 70	325.7	2073	71.5,71.5
80	170.3	168.8	165.3	163.7	166.4	166.2	165.6	168.6	70- 80	232.0	2305	79.5,79.5
90	103.0	102.1	100.2	99.92	101.6	100.3	98.73	99.03	80- 90	140.4	2446	84.3,84.3
100	87.30	85.63	85.52	84.70	85.31	83.52	83.65	83.81	90-100	98.44	2544	87.7,87.7
110	86.15	82.63	82.95	80.91	83.64	79.17	80.84	81.32	100-110	88.44	2633	90.8,90.8
120	76.37	76.54	77.41	76.37	73.02	74.90	75.49	75.83	110-120	77.93	2711	93.4,93.4
130	71.47	65.03	66.26	63.36	68.04	63.46	65.93	64.74	120-130	63.46	2774	95.6,95.6
140	64.93	55.37	59.64	54.42	61.52	53.58	58.11	53.90	130-140	46.92	2821	97.2,97.2
150	60.31	53.46	54.35	53.07	57.38	51.87	53.11	52.37	140-150	34.47	2856	98.4,98.4
160	58.45	54.07	51.90	51.67	54.54	50.40	51.46	52.04	150-160	24.56	2880	99.3,99.3
170	61.32	59.77	56.25	57.81	58.04	57.42	55.12	57.39	160-170	15.12	2895	99.8,99.8
180	65.18	61.11	65.51	61.25	65.23	61.16	65.51	61.26	170-180	5.653	2901	100,100
DEG	LUMINOUS INTENSITY:cd									UNIT:lm		

Conical surface Flux(90deg): 1156.1 lm

%lum = 39.9%

%lamp = 39.9%

Conical surface Flux(120deg): 1747.7 lm

%lum = 60.2%

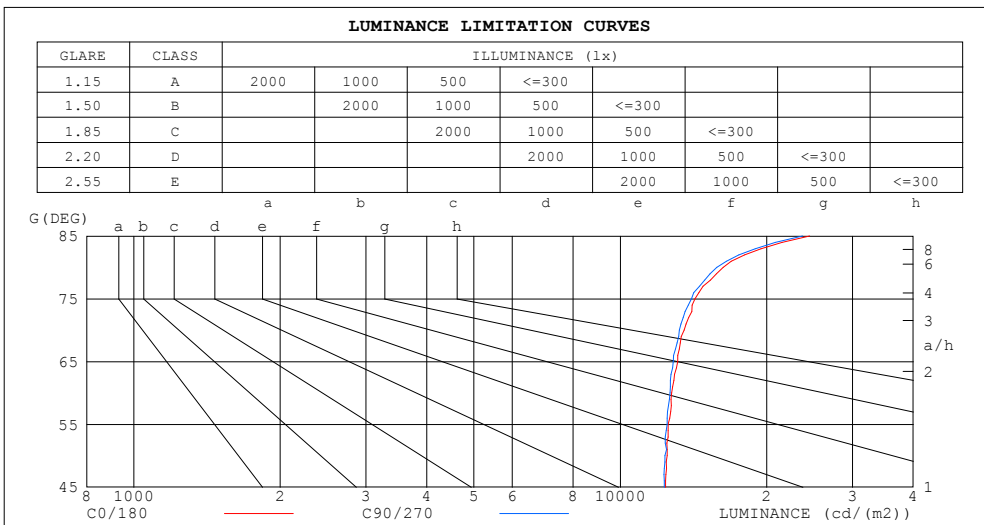
%lamp = 60.2%

C Range: 0 - 360DEG
 C Interval: 22.5DEG
 Test Speed: HIGH
 Temperature:25.3DEG
 Operators:chen
 Test Date:2022-10-04

□ Range: 0 - 180DEG
 □ Interval: 1.0DEG
 Test System:EVERFINE GO-3000H_V1 SYSTEM V2.00.411
 Humidity:65.0%
 Test Distance:8.650m [K=1.0000]
 Remarks:

LUMINANCE LIMITATION CURVES

Test:U:120.00V I:0.3432A P:40.709W PF:0.9886 Freq:60.00Hz Lamp Flux:2900.86x1 lm		
NAME: ASD Lighting Corp	TYPE:ASD-LFC-MY-20D42S-RGB-SMART:	
SPEC.:ASD-LFC-MY-20D42S-RGB-SMART-2700K	DIM.:	SERIAL No.:
MFR.: ASD Lighting Corp	SUR.: -0.491	Shielding Angle:



LUMINANCE cd/(m2)		
G (DEG)	C0/180	C90/270
85	24504	23694
80	16271	15795
75	14243	14017
70	13520	13224
65	13117	12854
60	12749	12654
55	12549	12484
50	12489	12352
45	12388	12312

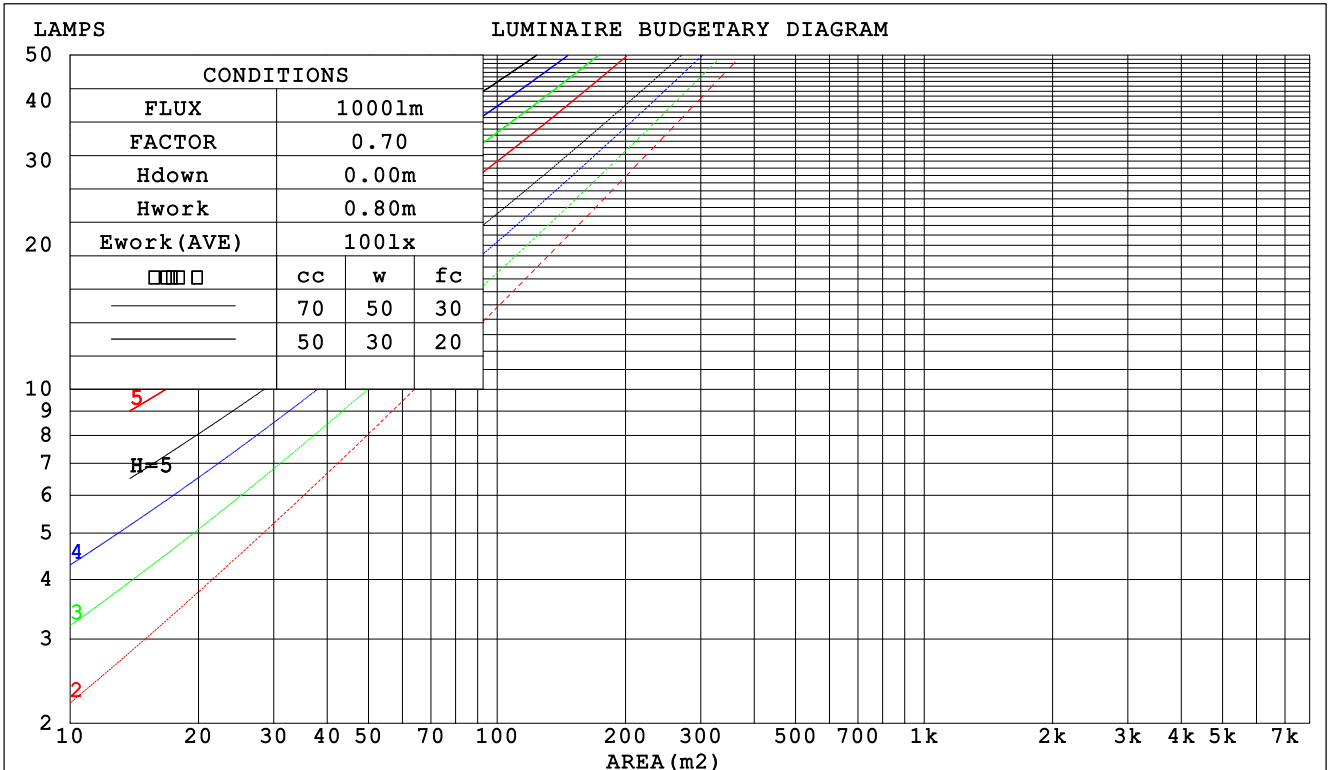
C Range: 0 - 360DEG
 C Interval: 22.5DEG
 Test Speed: HIGH
 Temperature:25.3DEG
 Operators:chen
 Test Date:2022-10-04

Range: 0 - 180DEG
 Interval: 1.0DEG
 Test System:EVERFINE GO-3000H_V1 SYSTEM V2.00.411
 Humidity:65.0%
 Test Distance:8.650m [K=1.0000]
 Remarks:

CU AND LUMINAIRE BUDGETARY ESTIMATE DIAGRAM

Test:U:120.00V I:0.3432A P:40.709W PF:0.9886 Freq:60.00Hz Lamp Flux:2900.86x1 lm		
NAME: ASD Lighting Corp	TYPE:ASD-LFC-MY-20D42S-RGB-SMARTLIGHT:	
SPEC.:ASD-LFC-MY-20D42S-RGB-SMART-2700K	DIM.:	SERIAL No.:
MFR.: ASD Lighting Corp	SUR.: -0.491	Shielding Angle:

□cc	80%			70%			50%			30%			10%			0
□w	50%	30%	10%	50%	30%	10%	50%	30%	10%	50%	30%	10%	50%	30%	10%	0
□fc	20%			20%			20%			20%			20%			0
RCR	RCR:Room Cavity Ratio						Coefficients of Utilization(CU)									
0.0	1.15	1.15	1.15	1.11	1.11	1.11	1.02	1.02	1.02	.95	.95	.95	.88	.88	.88	.84
1.0	.98	.93	.89	.94	.90	.86	.87	.84	.80	.80	.78	.75	.74	.72	.70	.67
2.0	.85	.77	.71	.81	.75	.69	.75	.70	.65	.69	.65	.61	.64	.61	.57	.54
3.0	.74	.65	.58	.71	.63	.57	.66	.59	.54	.61	.55	.51	.56	.52	.48	.45
4.0	.65	.56	.49	.62	.54	.48	.58	.51	.45	.54	.48	.43	.50	.45	.41	.38
5.0	.58	.48	.42	.56	.47	.41	.52	.44	.39	.48	.42	.37	.45	.39	.35	.33
6.0	.52	.43	.36	.50	.41	.35	.46	.39	.34	.43	.37	.32	.40	.35	.31	.28
7.0	.47	.38	.32	.45	.37	.31	.42	.35	.30	.39	.33	.28	.37	.31	.27	.25
8.0	.42	.34	.28	.41	.33	.27	.38	.31	.26	.36	.30	.25	.34	.28	.24	.22
9.0	.39	.31	.25	.38	.30	.24	.35	.28	.24	.33	.27	.23	.31	.26	.22	.20
10.0	.36	.28	.22	.35	.27	.22	.33	.26	.21	.31	.25	.20	.29	.23	.20	.18



C Range: 0 - 360DEG
 C Interval: 22.5DEG
 Test Speed: HIGH
 Temperature:25.3DEG
 Operators:chen
 Test Date:2022-10-04

□ Range: 0 - 180DEG
 □ Interval: 1.0DEG
 Test System:EVERFINE GO-3000H_V1 SYSTEM V2.00.411
 Humidity:65.0%
 Test Distance:8.650m [K=1.0000]
 Remarks:

WEC AND CCEC

Test:U:120.00V I:0.3432A P:40.709W PF:0.9886 Freq:60.00Hz Lamp Flux:2900.86x1 lm		
NAME: ASD Lighting Corp	TYPE:ASD-LFC-MY-20D42S-RGB-SMART:	
SPEC.:ASD-LFC-MY-20D42S-RGB-SMART-2700K	DIM.:	SERIAL No.:
MFR.: ASD Lighting Corp	SUR.: -0.491	Shielding Angle:

<input type="checkbox"/> cc	80%			70%			50%			30%			10%			0
<input type="checkbox"/> w	50%	30%	10%	50%	30%	10%	50%	30%	10%	50%	30%	10%	50%	30%	10%	0
<input type="checkbox"/> fc	20%			20%			20%			20%			20%			0
RCR	RCR:Room Cavity Ratio						Wall Exitance Coefficients (WEC)									
0.0																
1.0	.349	.199	.063	.337	.192	.061	.315	.181	.058	.294	.170	.054	.275	.160	.051	
2.0	.312	.171	.053	.302	.166	.051	.281	.157	.049	.263	.148	.046	.246	.139	.044	
3.0	.282	.150	.045	.273	.146	.044	.254	.138	.042	.238	.130	.040	.222	.123	.038	
4.0	.257	.133	.039	.248	.130	.038	.232	.123	.037	.216	.116	.035	.202	.110	.033	
5.0	.235	.120	.035	.227	.117	.034	.212	.111	.033	.198	.105	.031	.185	.099	.030	
6.0	.217	.109	.031	.209	.106	.030	.196	.100	.029	.183	.095	.028	.171	.090	.027	
7.0	.201	.099	.028	.194	.097	.028	.182	.092	.026	.170	.087	.025	.159	.083	.024	
8.0	.187	.091	.026	.181	.089	.025	.169	.085	.024	.159	.080	.023	.148	.076	.022	
9.0	.174	.084	.024	.169	.082	.023	.158	.078	.022	.149	.074	.021	.139	.071	.020	
10.0	.163	.078	.022	.158	.077	.021	.149	.073	.021	.140	.069	.020	.131	.066	.019	

<input type="checkbox"/> cc	80%			70%			50%			30%			10%			0
<input type="checkbox"/> w	50%	30%	10%	50%	30%	10%	50%	30%	10%	50%	30%	10%	50%	30%	10%	0
<input type="checkbox"/> fc	20%			20%			20%			20%			20%			0
RCR	RCR:Room Cavity Ratio						Ceiling Cavity Exitance Coefficients (CCEC)									
0.0	.310	.310	.310	.265	.265	.265	.181	.181	.181	.104	.104	.104	.033	.033	.033	
1.0	.304	.276	.252	.260	.237	.217	.178	.163	.150	.102	.094	.087	.033	.030	.028	
2.0	.296	.253	.217	.254	.218	.187	.174	.151	.131	.100	.088	.077	.032	.028	.025	
3.0	.289	.236	.195	.248	.204	.169	.170	.142	.118	.098	.083	.070	.032	.027	.023	
4.0	.281	.224	.180	.241	.193	.156	.166	.135	.110	.096	.079	.065	.031	.026	.021	
5.0	.274	.214	.169	.235	.185	.147	.162	.129	.104	.094	.076	.062	.030	.025	.020	
6.0	.267	.206	.162	.229	.178	.141	.158	.125	.100	.092	.073	.059	.030	.024	.020	
7.0	.260	.199	.157	.223	.173	.136	.154	.121	.097	.090	.071	.058	.029	.023	.019	
8.0	.253	.193	.152	.218	.168	.133	.151	.118	.094	.088	.069	.056	.028	.023	.019	
9.0	.247	.189	.149	.213	.164	.130	.147	.115	.092	.086	.068	.055	.028	.022	.018	
10.0	.241	.184	.147	.208	.160	.128	.144	.113	.091	.084	.067	.054	.027	.022	.018	

C Range: 0 - 360DEG
 C Interval: 22.5DEG
 Test Speed: HIGH
 Temperature:25.3DEG
 Operators:chen
 Test Date:2022-10-04

Range: 0 - 180DEG
 Interval: 1.0DEG
 Test System:EVERFINE GO-3000H_V1 SYSTEM V2.00.411
 Humidity:65.0%
 Test Distance:8.650m [K=1.0000]
 Remarks:

UGR(Unified Glare Rating) Table

Test:U:120.00V I:0.3432A P:40.709W PF:0.9886 Freq:60.00Hz Lamp Flux:2900.86x1 lm										
NAME: ASD Lighting Corp					TYPE:ASD-LFC-MY-20D42S-RGB-SMARTLIGHT:					
SPEC.:ASD-LFC-MY-20D42S-RGB-SMART-2700K					DIM.:			SERIAL No.:		
MFR.: ASD Lighting Corp					SUR.: -0.491			Shielding Angle:		
ceiling/cavity	0.7	0.7	0.5	0.5	0.3	0.7	0.7	0.5	0.5	0.3
walls	0.5	0.3	0.5	0.3	0.3	0.5	0.3	0.5	0.3	0.3
working plane	0.2	0.2	0.2	0.2	0.2	0.2	0.2	0.2	0.2	0.2
Room dimensions	Viewed crosswise					Viewed endwise				
x = 2H y = 2H	20.8	22.2	21.3	22.6	23.1	20.8	22.1	21.2	22.6	23.1
3H	22.7	24.0	23.2	24.5	25.0	22.6	23.9	23.2	24.4	24.9
4H	23.6	24.8	24.1	25.3	25.9	23.5	24.7	24.1	25.2	25.8
6H	24.5	25.6	25.0	26.1	26.7	24.4	25.5	24.9	26.0	26.6
8H	24.9	26.0	25.5	26.6	27.2	24.8	25.9	25.4	26.4	27.1
12H	25.4	26.4	26.0	27.0	27.6	25.3	26.3	25.9	26.9	27.5
4H 2H	21.4	22.6	22.0	23.2	23.7	21.4	22.6	22.0	23.1	23.7
3H	23.6	24.6	24.1	25.1	25.8	23.5	24.5	24.1	25.1	25.7
4H	24.6	25.6	25.2	26.2	26.8	24.6	25.5	25.1	26.1	26.7
6H	25.7	26.5	26.3	27.1	27.8	25.6	26.4	26.2	27.0	27.7
8H	26.2	27.0	26.8	27.6	28.3	26.1	26.9	26.7	27.5	28.2
12H	26.8	27.5	27.4	28.1	28.9	26.7	27.4	27.3	28.0	28.8
8H 4H	25.0	25.8	25.6	26.4	27.1	24.9	25.7	25.6	26.4	27.1
6H	26.3	26.9	26.9	27.6	28.4	26.2	26.9	26.9	27.5	28.3
8H	27.0	27.6	27.7	28.2	29.0	26.9	27.5	27.6	28.1	28.9
12H	27.8	28.3	28.5	29.0	29.8	27.7	28.2	28.4	28.9	29.7
12H 4H	25.1	25.8	25.7	26.4	27.2	25.0	25.7	25.6	26.4	27.1
6H	26.4	27.0	27.1	27.7	28.5	26.3	26.9	27.0	27.6	28.4
8H	27.2	27.7	27.9	28.4	29.2	27.1	27.6	27.8	28.3	29.1
Variations with the observer position at spacings:										
S = 1.0H	+ 0.1 / - 0.1					+ 0.1 / - 0.1				
1.5H	+ 0.2 / - 0.3					+ 0.2 / - 0.3				
2.0H	+ 0.2 / - 0.3					+ 0.2 / - 0.4				

CIE Pub.117, 2901 lm Total Lamp Luminous Flux Corrected (8log(F/F0) = 3.7)
 Area: 0.0602702 m2

C Range: 0 - 360DEG
 C Interval: 22.5DEG
 Test Speed: HIGH
 Temperature:25.3DEG
 Operators:chen
 Test Date:2022-10-04

Range: 0 - 180DEG
 Interval: 1.0DEG
 Test System:EVERFINE GO-3000H_V1 SYSTEM V2.00.411
 Humidity:65.0%
 Test Distance:8.650m [K=1.0000]
 Remarks:

UTILIZATION FACTORS TABLE

Test:U:120.00V I:0.3432A P:40.709W PF:0.9886 Freq:60.00Hz Lamp Flux:2900.86x1 lm		
NAME: ASD Lighting Corp	TYPE:ASD-LFC-MY-20D42S-RGB-SMART:	
SPEC.:ASD-LFC-MY-20D42S-RGB-SMART-2700K	DIM.:	SERIAL No.:
MFR.: ASD Lighting Corp	SUR.: -0.491	Shielding Angle:

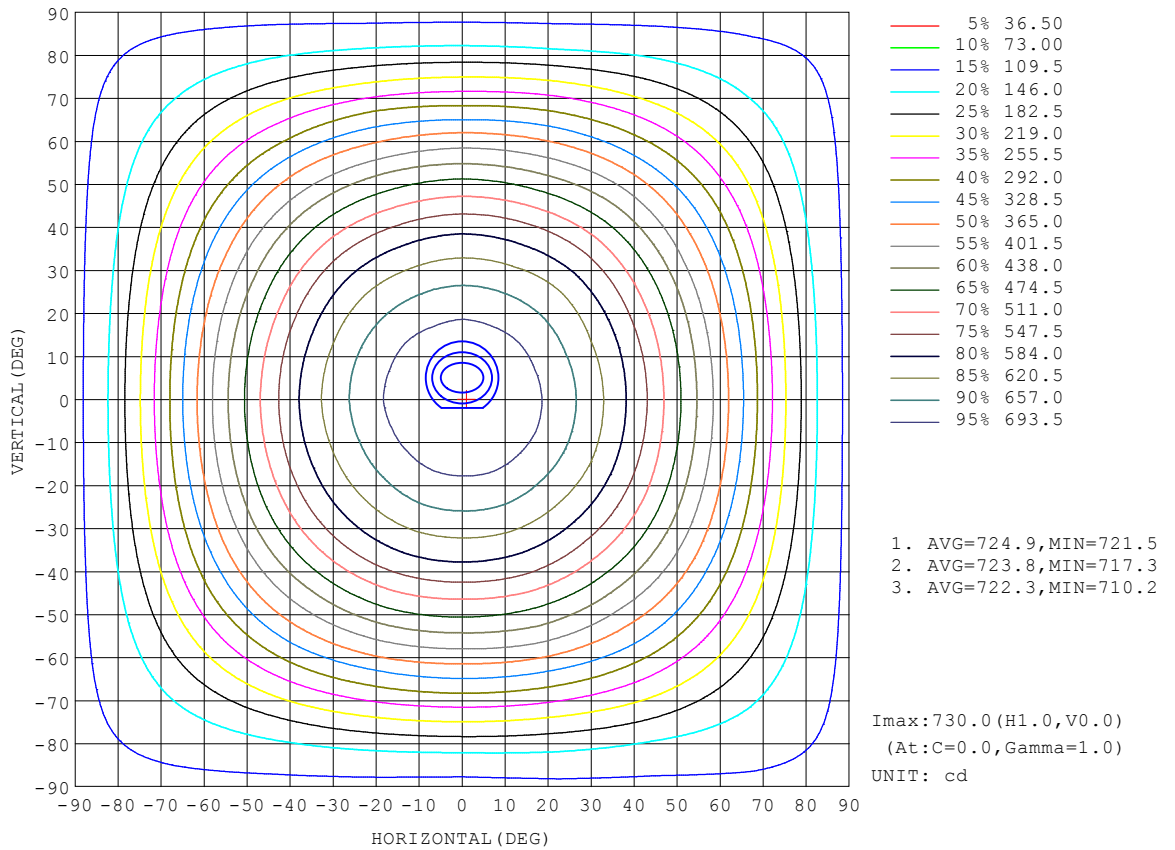
REFLECTANCE										
Ceiling	0.8	0.8	0.8	0.7	0.7	0.7	0.5	0.5	0.5	0
Walls	0.7	0.5	0.3	0.7	0.5	0.3	0.7	0.5	0.3	0
Working plane	0.2	0.2	0.2	0.2	0.2	0.2	0.2	0.2	0.2	0
ROOM INDEX	UTILIZATION FACTORS (PERCENT) $k(RI) \times RCR = 5$									
k = 0.60	50	38	31	49	38	31	47	37	30	24
0.80	60	47	40	58	47	39	55	45	38	30
1.00	68	56	48	66	54	47	62	55	46	37
1.25	75	63	55	72	62	54	68	59	52	43
1.50	80	69	61	77	67	60	73	64	57	47
2.00	87	77	69	84	75	68	79	71	65	54
2.50	91	82	75	88	80	73	82	75	70	58
3.00	95	87	80	92	84	78	85	79	74	61
4.00	99	92	87	96	89	84	89	84	80	66
5.00	102	96	91	98	93	88	91	87	83	69
ROOM INDEX	UF(total)									Direct
According to DIN EN 13032-2 2004			Suspended				SHRNOM = 1.25			

C Range: 0 - 360DEG
 C Interval: 22.5DEG
 Test Speed: HIGH
 Temperature:25.3DEG
 Operators:chen
 Test Date:2022-10-04

Range: 0 - 180DEG
 Interval: 1.0DEG
 Test System:EVERFINE GO-3000H_V1 SYSTEM V2.00.411
 Humidity:65.0%
 Test Distance:8.650m [K=1.0000]
 Remarks:

ISOCANDELA DIAGRAM

Test:U:120.00V I:0.3432A P:40.709W PF:0.9886 Freq:60.00Hz Lamp Flux:2900.86x1 lm		
NAME: ASD Lighting Corp	TYPE:ASD-LFC-MY-20D42S-RGB-SMARTLIGHT:	
SPEC.:ASD-LFC-MY-20D42S-RGB-SMART-2700K	DIM.:	SERIAL No.:
MFR.: ASD Lighting Corp	SUR.: -0.491	Shielding Angle:

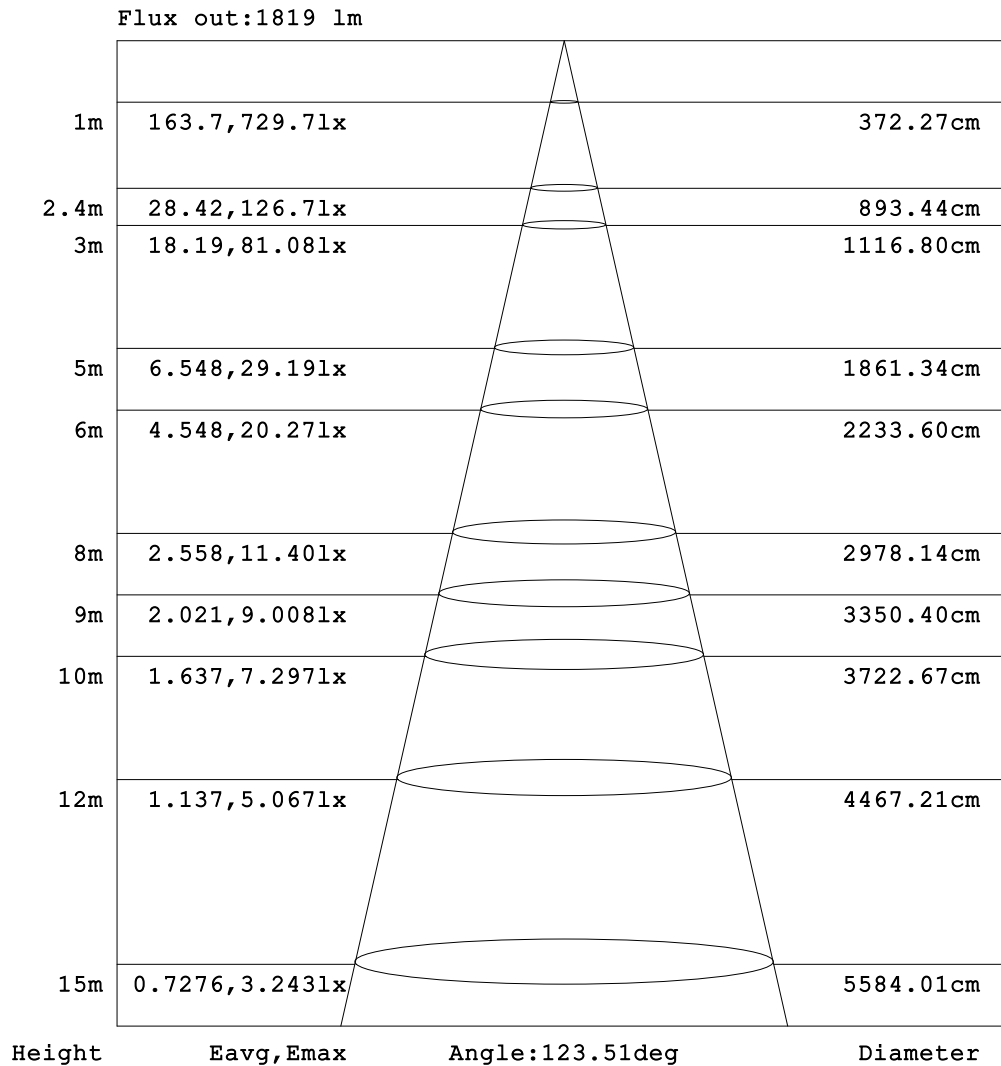


C Range: 0 - 360DEG
 C Interval: 22.5DEG
 Test Speed: HIGH
 Temperature: 25.3DEG
 Operators: chen
 Test Date: 2022-10-04

Range: 0 - 180DEG
 Interval: 1.0DEG
 Test System: EVERFINE GO-3000H_V1 SYSTEM V2.00.411
 Humidity: 65.0%
 Test Distance: 8.650m [K=1.0000]
 Remarks:

AAI Figure

Test:U:120.00V I:0.3432A P:40.709W PF:0.9886 Freq:60.00Hz Lamp Flux:2900.86x1 lm		
NAME: ASD Lighting Corp	TYPE:ASD-LFC-MY-20D42S-RGB-SMARTIGHT:	
SPEC.:ASD-LFC-MY-20D42S-RGB-SMART-2700K	DIM.:	SERIAL No.:
MFR.: ASD Lighting Corp	SUR.: -0.491	Shielding Angle:



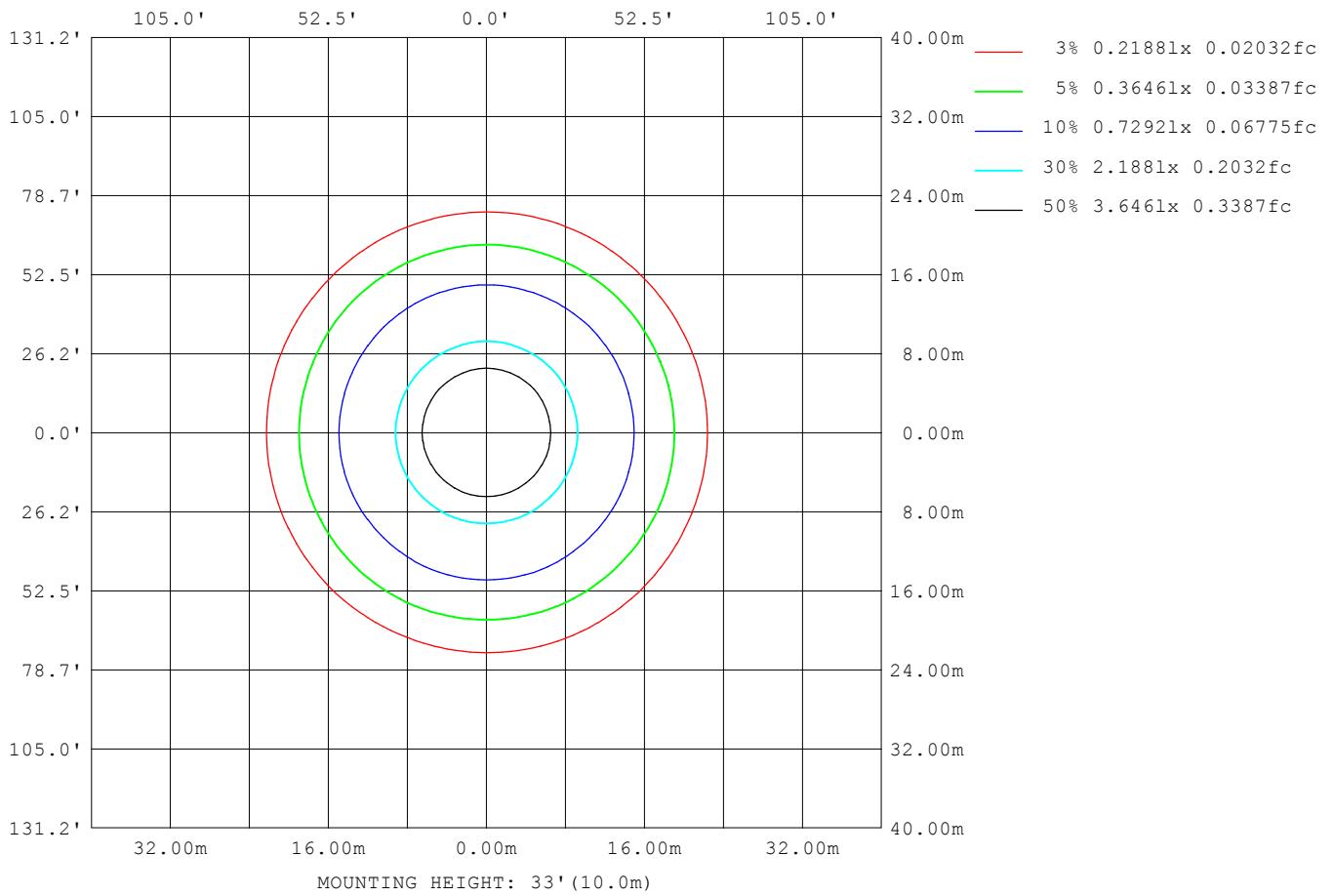
Note:The Curves indicate the illuminated area and the average illumination when the luminaire is at different distance.

C Range: 0 - 360DEG
 C Interval: 22.5DEG
 Test Speed: HIGH
 Temperature:25.3DEG
 Operators:chen
 Test Date:2022-10-04

Range: 0 - 180DEG
 Interval: 1.0DEG
 Test System:EVERFINE GO-3000H_V1 SYSTEM V2.00.411
 Humidity:65.0%
 Test Distance:8.650m [K=1.0000]
 Remarks:

ISOLUX DIAGRAM

Test:U:120.00V I:0.3432A P:40.709W PF:0.9886 Freq:60.00Hz Lamp Flux:2900.86x1 lm		
NAME: ASD Lighting Corp	TYPE:ASD-LFC-MY-20D42S-RGB-SMART:	
SPEC.:ASD-LFC-MY-20D42S-RGB-SMART-2700K	DIM.:	SERIAL No.:
MFR.: ASD Lighting Corp	SUR.: -0.491	Shielding Angle:



C Range: 0 - 360DEG
 C Interval: 22.5DEG
 Test Speed: HIGH
 Temperature:25.3DEG
 Operators:chen
 Test Date:2022-10-04

Range: 0 - 180DEG
 Interval: 1.0DEG
 Test System:EVERFINE GO-3000H_V1 SYSTEM V2.00.411
 Humidity:65.0%
 Test Distance:8.650m [K=1.0000]
 Remarks:

LED Avg.L Report

Test:U:120.00V I:0.3432A P:40.709W PF:0.9886 Freq:60.00Hz Lamp Flux:2900.86x1 lm		
NAME: ASD Lighting Corp	TYPE:ASD-LFC-MY-20D42S-RGB-SMART:	
SPEC.:ASD-LFC-MY-20D42S-RGB-SMART-2700K	DIM.:	SERIAL No.:
MFR.: ASD Lighting Corp	SUR.: -0.491	Shielding Angle:

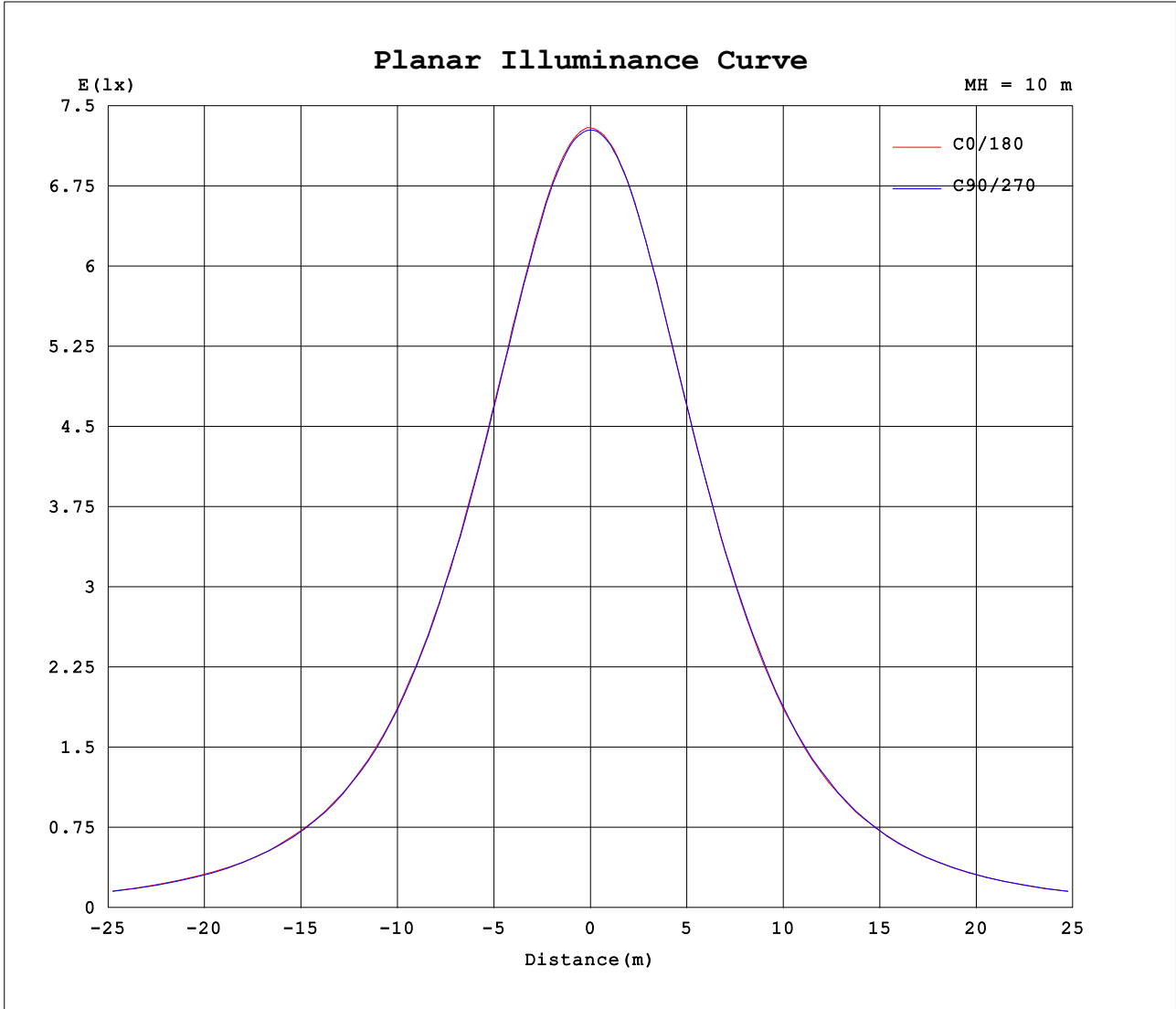
AvgL	cd/m2
L_0~180 (65) av	13004
L_0~180 (75) av	14075
L_0~180 (85) av	24319
L_90~270 (65) av	12870
L_90~270 (75) av	13992
L_90~270 (85) av	23722
L_45 (65) av	12923
L_45 (75) av	14063
L_45 (85) av	23947

Standard: GB/T 29293-2012

C Range: 0 - 360DEG
 C Interval: 22.5DEG
 Test Speed: HIGH
 Temperature:25.3DEG
 Operators:chen
 Test Date:2022-10-04

Range: 0 - 180DEG
 Interval: 1.0DEG
 Test System:EVERFINE GO-3000H_V1 SYSTEM V2.00.411
 Humidity:65.0%
 Test Distance:8.650m [K=1.0000]
 Remarks:

Planar Illuminance Curve



C Range: 0 - 360DEG
 C Interval: 22.5DEG
 Test Speed: HIGH
 Temperature:25.3DEG
 Operators:chen
 Test Date:2022-10-04

Range: 0 - 180DEG
 Interval: 1.0DEG
 Test System:EVERFINE GO-3000H_V1 SYSTEM V2.00.411
 Humidity:65.0%
 Test Distance:8.650m [K=1.0000]
 Remarks:

LUMINOUS DISTRIBUTION INTENSITY DATA

Test:U:120.00V I:0.3432A P:40.709W PF:0.9886 Freq:60.00Hz Lamp Flux:2900.86x1 lm		
NAME: ASD Lighting Corp	TYPE:ASD-LFC-MY-20D42S-RGB-SMARTIGHT:	
SPEC.:ASD-LFC-MY-20D42S-RGB-SMART-2700K	DIM.:	SERIAL No.:
MFR.: ASD Lighting Corp	SUR.: -0.491	Shielding Angle:

Table--1

UNIT: cd

C (DEG) □ (DEG)	0	22.5	45	67.5	90	112.5	135	157.5	180	202.5	225	247.5	270	292.5	315	337.5			
0	729	729	728	728	728	727	727	726	729	729	728	728	728	727	727	726			
5	727	727	726	726	725	725	724	725	727	726	726	726	726	726	725	725			
10	720	720	719	718	717	717	716	716	720	719	719	718	719	718	718	718			
15	707	707	705	705	704	703	702	703	705	705	705	705	706	705	706	705			
20	688	688	686	686	685	685	683	683	686	686	687	687	687	687	687	686			
25	665	665	663	663	662	662	660	661	663	664	665	665	665	664	665	663			
30	638	638	636	636	634	634	633	634	638	636	638	636	638	637	639	638			
35	606	608	605	604	605	603	603	602	605	603	605	604	606	606	609	605			
40	570	572	568	569	567	570	570	567	569	567	573	568	573	571	574	570			
45	528	529	526	527	525	526	525	526	527	525	527	528	532	532	532	528			
50	484	483	480	482	479	481	480	481	480	479	480	481	486	484	485	482			
55	434	435	432	436	432	434	432	433	432	431	432	434	436	435	438	435			
60	384	383	382	383	381	382	382	385	382	381	381	385	385	385	387	385			
65	334	330	332	328	327	325	328	326	328	327	327	329	328	332	330	331			
70	279	278	276	273	273	274	273	272	272	271	272	274	272	275	279	277			
75	222	222	222	218	219	218	219	218	217	217	217	217	218	221	220	221			
80	170	171	169	168	165	166	164	169	166	164	166	165	166	164	169	168			
85	129	130	127	129	124	126	125	127	127	125	126	125	125	123	125	125			
90	103	104	102	103	100	101	99.9	102	102	101	100	99.3	98.7	98.7	99.0	100			
95	90.9	91.0	89.8	90.1	89.3	89.4	88.2	90.0	89.6	89.2	87.9	86.6	87.0	86.7	87.6	88.8			
100	87.3	86.4	85.6	86.0	85.5	85.2	84.7	85.6	85.3	84.1	83.5	83.3	83.7	83.4	83.8	85.1			
105	86.8	85.5	84.1	84.6	84.4	84.1	83.0	84.3	84.5	82.8	81.1	81.8	82.5	82.6	82.8	84.1			
110	86.1	83.4	82.6	83.2	82.9	81.8	80.9	81.8	83.6	80.1	79.2	79.5	80.8	81.2	81.3	82.5			
115	80.4	78.1	80.3	80.9	80.5	78.5	79.0	76.6	78.1	74.4	77.1	76.6	78.5	78.9	78.9	77.7			
120	76.4	74.3	76.5	77.5	77.4	75.0	76.4	73.1	73.0	70.6	74.9	73.5	75.5	75.0	75.8	73.4			
125	74.5	70.3	72.4	71.8	72.7	70.7	71.0	69.5	71.0	66.9	70.9	69.8	71.1	69.8	71.9	69.6			
130	71.5	65.9	65.0	65.6	66.3	65.7	63.4	65.1	68.0	63.0	63.5	65.0	65.9	64.4	64.7	65.5			
135	68.0	61.0	59.0	60.4	61.9	59.7	57.4	59.5	64.3	58.2	57.4	58.8	61.0	58.8	57.5	60.3			
140	64.9	57.1	55.4	54.9	59.6	54.2	54.4	55.6	61.5	54.4	53.6	52.8	58.1	54.3	53.9	56.6			
145	62.7	56.8	54.3	53.1	56.6	52.8	53.3	54.7	59.4	53.4	52.0	50.4	55.5	51.4	53.2	55.7			
150	60.3	56.5	53.5	52.0	54.4	52.3	53.1	53.7	57.4	53.1	51.9	50.5	53.1	51.0	52.4	55.0			
155	58.5	56.1	53.6	51.8	52.4	51.8	52.1	50.9	55.4	51.8	51.5	51.0	51.7	50.5	52.9	54.6			
160	58.4	57.0	54.1	51.5	51.9	51.9	51.7	51.0	54.5	51.0	50.4	52.4	51.5	49.8	52.0	55.2			
165	58.8	57.9	54.5	51.3	52.2	51.8	51.0	51.0	54.0	49.9	50.7	52.7	51.8	49.8	51.8	55.1			
170	61.3	61.4	59.8	54.2	56.2	57.1	57.8	55.2	58.0	55.2	57.4	57.7	55.1	53.4	57.4	59.2			
175	63.2	62.6	58.7	57.8	61.7	62.0	58.0	58.7	62.5	58.4	57.3	61.4	61.0	57.3	58.0	62.1			
180	65.2	62.1	61.1	61.6	65.5	61.9	61.2	62.0	65.2	62.1	61.2	61.5	65.5	61.8	61.3	61.9			

C Range: 0 - 360DEG
 C Interval: 22.5DEG
 Test Speed: HIGH
 Temperature:25.3DEG
 Operators:chen
 Test Date:2022-10-04

□ Range: 0 - 180DEG
 □ Interval: 1.0DEG
 Test System:EVERFINE GO-3000H_V1 SYSTEM V2.00.411
 Humidity:65.0%
 Test Distance:8.650m [K=1.0000]
 Remarks: