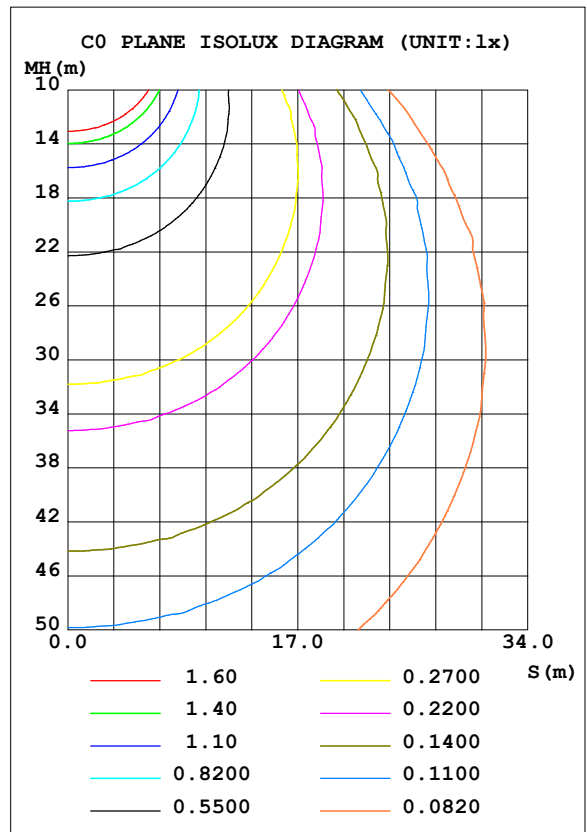
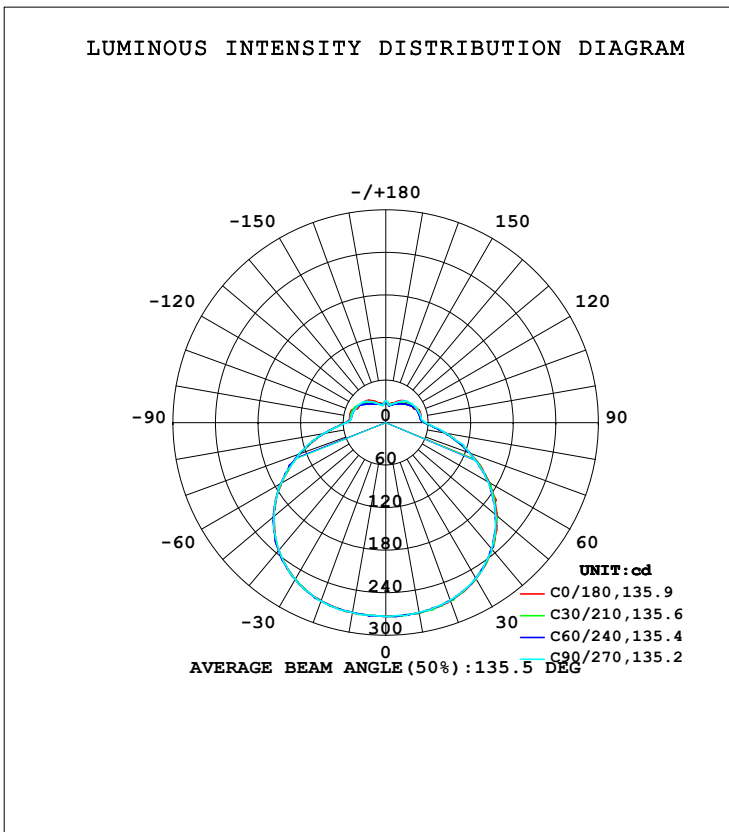


LUMINAIRE PHOTOMETRIC TEST REPORT

Test:U:120.08V I:0.2590A P:28.408W PF:0.9127 Freq:60.00Hz Lamp Flux:1325.38x1 lm		
NAME: ASD lighting Corp	TYPE:	WEIGHT:
SPEC.:ASD-LFC-AF-16D28-AC-NK-2700K	DIM.:	SERIAL No.:
MFR.: ASD lighting Corp	SUR.:0.38*0.38	Shielding Angle:

DATA OF LAMP		PHOTOMETRIC DATA Eff: 46.66 lm/W			
MODEIASD-LFC-AF-16D28-AC-NK		I _{max} (cd)	273.9	S/MH (C0/180)	1.39
NOMINAL POWER (W)	--	LOR (%)	100.0	S/MH (C90/270)	1.39
RATED VOLTAGE (V)	--	TOTAL FLUX (lm)	1325.4	□ UP, DN (C0-180)	10.3,39.5
NOMINAL FLUX (lm)	1325.38	CIE CLASS	SEMI-D.	□ UP, DN (C180-360)	10.3,39.9
LAMPS INSIDE	1	□ up (%)	20.6	CIBSE SHR NOM	1.50
TEST VOLTAGE (V)	--	□ down (%)	79.4	CIBSE SHR MAX	1.55



C Range: 0 - 360DEG
 C Interval: 30.0DEG
 Test Speed: HIGH
 Temperature: 25.3DEG
 Operators: admin
 Test Date: 2022-03-16

□ Range: 0 - 180DEG
 □ Interval: 1.0DEG
 Test System: EVERFINE GO-2000B_V1 SYSTEM V2.00.411
 Humidity: 65.0%
 Test Distance: 8.780m [K=1.0000]
 Remarks:

ZONAL FLUX DIAGRAM

ZONAL FLUX DIAGRAM:

mm	C0	C45	C90	C135	C180	C225	C270	C315	mm	□ zone	□ total	%lum, lamp
10	273.3	272.7	271.7	272.5	271.8	271.9	272.0	272.3	0- 10	26.02	26.02	1.96,1.96
20	267.1	266.6	266.4	266.9	267.1	267.7	267.7	268.0	10- 20	76.53	102.5	7.74,7.74
30	254.7	254.1	253.7	255.0	255.8	255.2	255.5	255.5	20- 30	121.0	223.5	16.9,16.9
40	233.7	232.6	231.9	233.1	234.8	235.3	234.8	234.7	30- 40	153.7	377.2	28.5,28.5
50	205.9	202.7	202.2	203.9	205.6	206.3	206.1	207.2	40- 50	170.1	547.4	41.3,41.3
60	169.7	167.1	167.1	168.3	169.5	170.3	170.0	171.9	50- 60	167.9	715.2	54,54
70	126.8	126.5	125.2	129.9	129.3	130.2	130.3	129.3	60- 70	147.3	862.5	65.1,65.1
80	86.90	84.87	85.97	87.85	88.05	87.78	89.75	87.14	70- 80	113.6	976.1	73.6,73.6
90	54.72	54.63	56.07	57.13	57.30	56.19	55.73	55.23	80- 90	75.79	1052	79.4,79.4
100	50.30	49.21	50.30	51.52	51.70	49.92	49.45	49.18	90-100	56.11	1108	83.6,83.6
110	50.78	48.41	48.78	50.49	51.75	49.22	48.35	48.65	100-110	52.76	1161	87.6,87.6
120	44.23	45.96	46.97	47.88	44.59	46.90	46.58	46.61	110-120	47.60	1208	91.2,91.2
130	42.67	40.46	44.15	42.06	43.26	40.93	44.07	40.82	120-130	39.74	1248	94.2,94.2
140	40.41	35.41	39.64	36.73	40.98	35.59	39.32	35.93	130-140	30.79	1279	96.5,96.5
150	34.94	31.72	33.39	32.68	35.63	31.79	32.85	31.97	140-150	22.00	1301	98.2,98.2
160	29.78	27.85	28.40	28.95	30.05	27.94	28.11	28.18	150-160	14.21	1315	99.2,99.2
170	27.22	25.07	25.67	25.24	27.27	24.99	25.19	24.24	160-170	7.662	1323	99.8,99.8
180	31.07	28.93	31.38	29.06	31.07	28.92	31.40	29.10	170-180	2.598	1325	100,100
DEG	LUMINOUS INTENSITY:cd									UNIT:lm		

Conical surface Flux(90deg): 461.38 lm

%lum = 34.8%

%lamp = 34.8%

Conical surface Flux(120deg): 715.2 lm

%lum = 54.0%

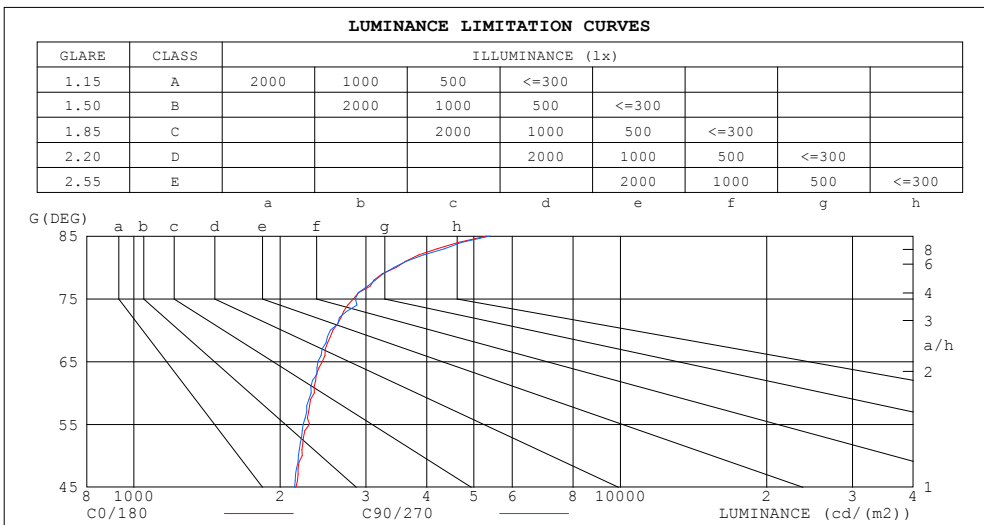
%lamp = 54.0%

C Range: 0 - 360DEG
 C Interval: 30.0DEG
 Test Speed: HIGH
 Temperature:25.3DEG
 Operators:admin
 Test Date:2022-03-16

□ Range: 0 - 180DEG
 □ Interval: 1.0DEG
 Test System:EVERFINE GO-2000B_V1 SYSTEM V2.00.411
 Humidity:65.0%
 Test Distance:8.780m [K=1.0000]
 Remarks:

LUMINANCE LIMITATION CURVES

Test:U:120.08V I:0.2590A P:28.408W PF:0.9127 Freq:60.00Hz Lamp Flux:1325.38x1 lm		
NAME: ASD lighting Corp	TYPE:	WEIGHT:
SPEC.:ASD-LFC-AF-16D28-AC-NK-2700K	DIM.:	SERIAL No.:
MFR.: ASD lighting Corp	SUR.:0.38*0.38	Shielding Angle:



LUMINANCE cd/(m2)		
G (DEG)	C0/180	C90/270
85	5318	5399
80	3466	3429
75	2827	2853
70	2568	2536
65	2442	2392
60	2350	2315
55	2299	2231
50	2218	2178
45	2154	2139

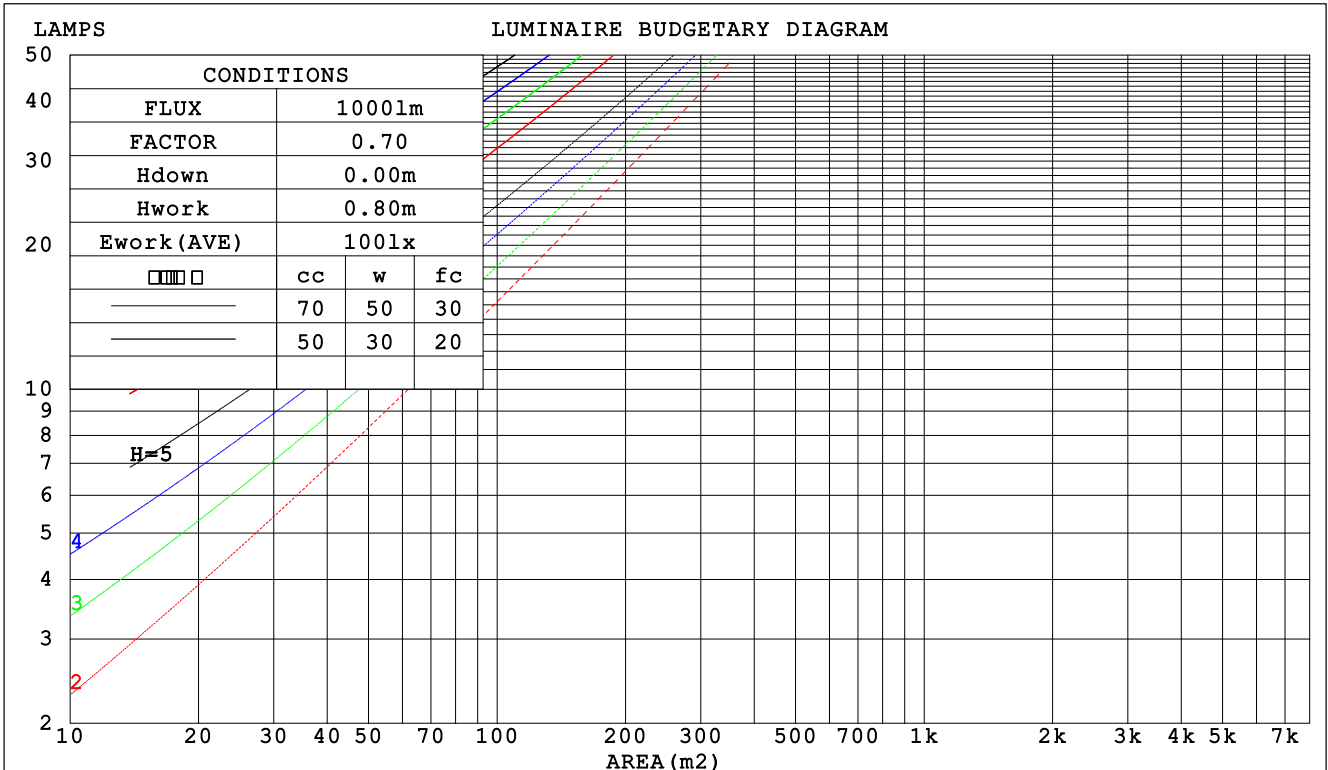
C Range: 0 - 360DEG
 C Interval: 30.0DEG
 Test Speed: HIGH
 Temperature:25.3DEG
 Operators:admin
 Test Date:2022-03-16

Range: 0 - 180DEG
 Interval: 1.0DEG
 Test System:EVERFINE GO-2000B_V1 SYSTEM V2.00.411
 Humidity:65.0%
 Test Distance:8.780m [K=1.0000]
 Remarks:

CU AND LUMINAIRE BUDGETARY ESTIMATE DIAGRAM

Test:U:120.08V I:0.2590A P:28.408W PF:0.9127 Freq:60.00Hz Lamp Flux:1325.38x1 lm		
NAME: ASD lighting Corp	TYPE:	WEIGHT:
SPEC.:ASD-LFC-AF-16D28-AC-NK-2700K	DIM.:	SERIAL No.:
MFR.: ASD lighting Corp	SUR.:0.38*0.38	Shielding Angle:

□cc	80%			70%			50%			30%			10%			0
□w	50%	30%	10%	50%	30%	10%	50%	30%	10%	50%	30%	10%	50%	30%	10%	0
□fc	20%			20%			20%			20%			20%			0
RCR	RCR:Room Cavity Ratio						Coefficients of Utilization(CU)									
0.0	1.14	1.14	1.14	1.09	1.09	1.09	.00	.00	.00	.91	.91	.91	.83	.83	.83	.79
1.0	.96	.91	.87	.92	.87	.83	.84	.80	.77	.76	.73	.71	.69	.67	.65	.62
2.0	.82	.75	.69	.79	.72	.66	.72	.66	.61	.65	.61	.57	.59	.56	.53	.49
3.0	.72	.63	.56	.68	.60	.54	.62	.56	.50	.57	.51	.47	.52	.47	.44	.40
4.0	.63	.54	.46	.60	.52	.45	.55	.48	.42	.50	.44	.39	.46	.41	.37	.34
5.0	.56	.46	.39	.53	.45	.38	.49	.42	.36	.45	.39	.34	.41	.36	.32	.29
6.0	.50	.41	.34	.48	.39	.33	.44	.37	.31	.40	.34	.29	.37	.32	.27	.25
7.0	.45	.36	.30	.43	.35	.29	.40	.32	.27	.36	.30	.26	.33	.28	.24	.22
8.0	.41	.32	.26	.39	.31	.25	.36	.29	.24	.33	.27	.23	.31	.25	.21	.19
9.0	.37	.29	.23	.36	.28	.23	.33	.26	.22	.31	.25	.20	.28	.23	.19	.17
10.0	.34	.26	.21	.33	.25	.20	.31	.24	.19	.28	.22	.18	.26	.21	.17	.15



C Range: 0 - 360DEG
 C Interval: 30.0DEG
 Test Speed: HIGH
 Temperature:25.3DEG
 Operators:admin
 Test Date:2022-03-16

□ Range: 0 - 180DEG
 □ Interval: 1.0DEG
 Test System:EVERFINE GO-2000B_V1 SYSTEM V2.00.411
 Humidity:65.0%
 Test Distance:8.780m [K=1.0000]
 Remarks:

WEC AND CCEC

Test:U:120.08V I:0.2590A P:28.408W PF:0.9127 Freq:60.00Hz Lamp Flux:1325.38x1 lm		
NAME: ASD lighting Corp	TYPE:	WEIGHT:
SPEC.:ASD-LFC-AF-16D28-AC-NK-2700K	DIM.:	SERIAL No.:
MFR.: ASD lighting Corp	SUR.:0.38*0.38	Shielding Angle:

<input type="checkbox"/> cc	80%	70%	50%	30%	10%	0
<input type="checkbox"/> w	50% 30% 10%	50% 30% 10%	50% 30% 10%	50% 30% 10%	50% 30% 10%	0
<input type="checkbox"/> fc	20%	20%	20%	20%	20%	0
RCR	RCR:Room Cavity Ratio		Wall Exitance Coefficients (WEC)			
0.0						
1.0	.363 .207 .065	.350 .200 .063	.325 .186 .059	.302 .174 .056	.280 .162 .052	
2.0	.321 .176 .054	.309 .170 .052	.286 .159 .049	.265 .149 .047	.245 .139 .044	
3.0	.288 .153 .046	.277 .148 .045	.256 .139 .042	.237 .130 .040	.219 .121 .038	
4.0	.261 .135 .040	.251 .131 .039	.232 .123 .037	.215 .115 .035	.198 .108 .033	
5.0	.238 .121 .035	.229 .118 .034	.212 .110 .032	.196 .103 .031	.181 .097 .029	
6.0	.219 .110 .031	.210 .106 .031	.195 .100 .029	.180 .094 .028	.167 .088 .026	
7.0	.202 .100 .028	.195 .097 .028	.180 .091 .026	.167 .086 .025	.154 .080 .024	
8.0	.188 .092 .026	.181 .089 .025	.168 .084 .024	.155 .079 .023	.144 .074 .021	
9.0	.175 .085 .024	.169 .082 .023	.157 .077 .022	.145 .073 .021	.134 .068 .020	
10.0	.164 .079 .022	.158 .076 .021	.147 .072 .020	.136 .068 .019	.126 .064 .018	

<input type="checkbox"/> cc	80%	70%	50%	30%	10%	0
<input type="checkbox"/> w	50% 30% 10%	50% 30% 10%	50% 30% 10%	50% 30% 10%	50% 30% 10%	0
<input type="checkbox"/> fc	20%	20%	20%	20%	20%	0
RCR	RCR:Room Cavity Ratio		Ceiling Cavity Exitance Coefficients (CCEC)			
0.0	.348 .348 .348	.297 .297 .297	.203 .203 .203	.117 .117 .117	.037 .037 .037	
1.0	.343 .314 .289	.293 .270 .248	.200 .186 .172	.115 .107 .100	.037 .035 .032	
2.0	.336 .291 .254	.288 .251 .220	.197 .174 .153	.114 .101 .090	.036 .033 .029	
3.0	.328 .275 .232	.282 .237 .201	.193 .165 .141	.112 .096 .083	.036 .031 .027	
4.0	.321 .262 .218	.275 .227 .189	.189 .158 .133	.110 .093 .079	.035 .030 .026	
5.0	.313 .253 .208	.269 .219 .181	.185 .153 .128	.107 .090 .076	.035 .029 .025	
6.0	.306 .245 .201	.263 .212 .175	.182 .148 .124	.105 .087 .073	.034 .029 .024	
7.0	.299 .238 .195	.257 .206 .170	.178 .145 .121	.103 .085 .072	.033 .028 .024	
8.0	.293 .233 .191	.252 .202 .167	.174 .142 .118	.101 .084 .071	.033 .027 .023	
9.0	.287 .228 .188	.247 .198 .164	.171 .139 .117	.100 .082 .070	.032 .027 .023	
10.0	.281 .224 .186	.242 .194 .162	.168 .137 .115	.098 .081 .069	.032 .027 .023	

C Range: 0 - 360DEG
 C Interval: 30.0DEG
 Test Speed: HIGH
 Temperature:25.3DEG
 Operators:admin
 Test Date:2022-03-16

Range: 0 - 180DEG
 Interval: 1.0DEG
 Test System:EVERFINE GO-2000B_V1 SYSTEM V2.00.411
 Humidity:65.0%
 Test Distance:8.780m [K=1.0000]
 Remarks:

UGR(Unified Glare Rating) Table

Test:U:120.08V I:0.2590A P:28.408W PF:0.9127 Freq:60.00Hz Lamp Flux:1325.38x1 lm										
NAME: ASD lighting Corp					TYPE:			WEIGHT:		
SPEC.:ASD-LFC-AF-16D28-AC-NK-2700K					DIM.:			SERIAL No.:		
MFR.: ASD lighting Corp					SUR.:0.38*0.38			Shielding Angle:		
ceiling/cavity	0.7	0.7	0.5	0.5	0.3	0.7	0.7	0.5	0.5	0.3
walls	0.5	0.3	0.5	0.3	0.3	0.5	0.3	0.5	0.3	0.3
working plane	0.2	0.2	0.2	0.2	0.2	0.2	0.2	0.2	0.2	0.2
Room dimensions	Viewed crosswise					Viewed endwise				
x = 2H y = 2H	14.6	15.9	15.1	16.4	17.0	14.5	15.8	15.0	16.3	17.0
3H	16.6	17.8	17.2	18.4	19.1	16.5	17.8	17.1	18.3	19.0
4H	17.6	18.8	18.2	19.4	20.1	17.6	18.8	18.2	19.4	20.0
6H	18.7	19.8	19.3	20.4	21.1	18.7	19.7	19.3	20.4	21.0
8H	19.2	20.3	19.8	20.9	21.6	19.2	20.3	19.8	20.9	21.6
12H	19.8	20.8	20.4	21.4	22.2	19.8	20.8	20.5	21.5	22.2
4H 2H	15.2	16.4	15.8	17.0	17.7	15.2	16.3	15.8	16.9	17.6
3H	17.5	18.5	18.1	19.1	19.9	17.4	18.5	18.1	19.1	19.8
4H	18.7	19.6	19.3	20.2	21.0	18.6	19.6	19.3	20.2	21.0
6H	19.9	20.7	20.6	21.4	22.2	19.9	20.7	20.5	21.4	22.2
8H	20.5	21.3	21.2	22.0	22.8	20.5	21.3	21.2	22.0	22.8
12H	21.2	21.9	21.9	22.6	23.5	21.2	21.9	21.9	22.7	23.5
8H 4H	19.1	19.9	19.8	20.6	21.4	19.1	19.8	19.8	20.5	21.3
6H	20.6	21.2	21.3	21.9	22.8	20.5	21.2	21.3	21.9	22.8
8H	21.4	22.0	22.1	22.7	23.6	21.4	21.9	22.1	22.7	23.6
12H	22.3	22.8	23.0	23.5	24.4	22.3	22.8	23.0	23.5	24.4
12H 4H	19.2	19.9	19.9	20.6	21.4	19.2	19.9	19.9	20.6	21.4
6H	20.7	21.3	21.5	22.1	22.9	20.7	21.3	21.5	22.0	22.9
8H	21.6	22.1	22.4	22.9	23.8	21.6	22.1	22.4	22.9	23.8
Variations with the observer position at spacings:										
S = 1.0H	+ 0.1 / - 0.1					+ 0.1 / - 0.1				
1.5H	+ 0.2 / - 0.3					+ 0.2 / - 0.3				
2.0H	+ 0.2 / - 0.4					+ 0.2 / - 0.4				

CIE Pub.117, 1325 lm Total Lamp Luminous Flux Corrected (8log(F/F0) = 1.0)
 Area: 0.1444 m2

C Range: 0 - 360DEG
 C Interval: 30.0DEG
 Test Speed: HIGH
 Temperature:25.3DEG
 Operators:admin
 Test Date:2022-03-16

Range: 0 - 180DEG
 Interval: 1.0DEG
 Test System:EVERFINE GO-2000B_V1 SYSTEM V2.00.411
 Humidity:65.0%
 Test Distance:8.780m [K=1.0000]
 Remarks:

UTILIZATION FACTORS TABLE

Test:U:120.08V I:0.2590A P:28.408W PF:0.9127 Freq:60.00Hz Lamp Flux:1325.38x1 lm		
NAME: ASD lighting Corp	TYPE:	WEIGHT:
SPEC.:ASD-LFC-AF-16D28-AC-NK-2700K	DIM.:	SERIAL No.:
MFR.: ASD lighting Corp	SUR.:0.38*0.38	Shielding Angle:

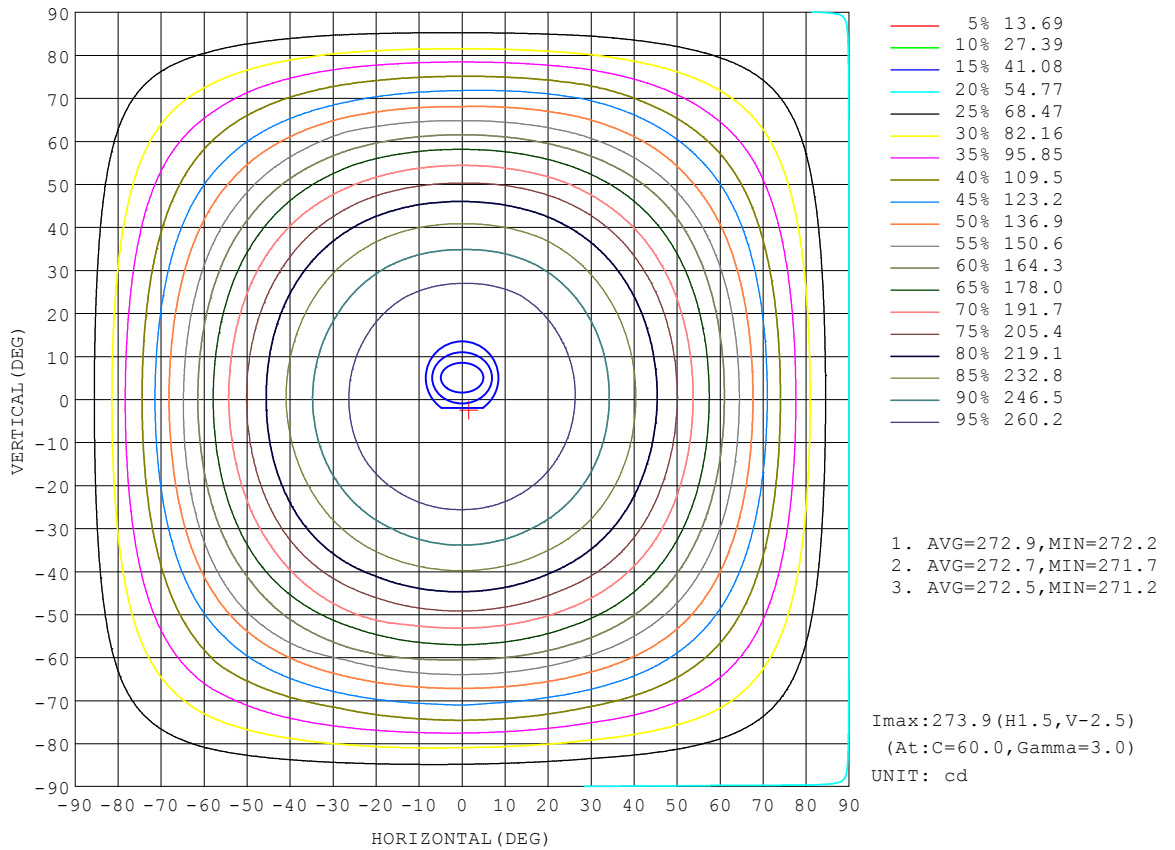
REFLECTANCE										
Ceiling	0.8	0.8	0.8	0.7	0.7	0.7	0.5	0.5	0.5	0
Walls	0.7	0.5	0.3	0.7	0.5	0.3	0.7	0.5	0.3	0
Working plane	0.2	0.2	0.2	0.2	0.2	0.2	0.2	0.2	0.2	0
ROOM INDEX	UTILIZATION FACTORS (PERCENT) $k(RI) \times RCR = 5$									
k = 0.60	48	35	28	46	35	28	44	34	27	20
0.80	57	44	36	55	43	36	52	42	35	27
1.00	65	52	44	63	51	43	59	51	42	33
1.25	72	60	51	69	58	50	65	55	48	38
1.50	77	65	57	74	63	56	69	60	53	42
2.00	84	74	66	81	71	64	75	67	61	49
2.50	89	79	71	85	76	69	78	71	66	52
3.00	93	84	77	89	81	74	82	75	70	56
4.00	97	90	84	93	86	81	85	80	75	60
5.00	100	94	88	96	90	85	88	83	79	63
ROOM INDEX	UF(total)									Direct
According to DIN EN 13032-2 2004			Suspended				SHRNOM = 1.25			

C Range: 0 - 360DEG
 C Interval: 30.0DEG
 Test Speed: HIGH
 Temperature:25.3DEG
 Operators:admin
 Test Date:2022-03-16

Range: 0 - 180DEG
 Interval: 1.0DEG
 Test System:EVERFINE GO-2000B_V1 SYSTEM V2.00.411
 Humidity:65.0%
 Test Distance:8.780m [K=1.0000]
 Remarks:

ISOCANDELA DIAGRAM

Test:U:120.08V I:0.2590A P:28.408W PF:0.9127 Freq:60.00Hz Lamp Flux:1325.38x1 lm		
NAME: ASD lighting Corp	TYPE:	WEIGHT:
SPEC.:ASD-LFC-AF-16D28-AC-NK-2700K	DIM.:	SERIAL No.:
MFR.: ASD lighting Corp	SUR.:0.38*0.38	Shielding Angle:

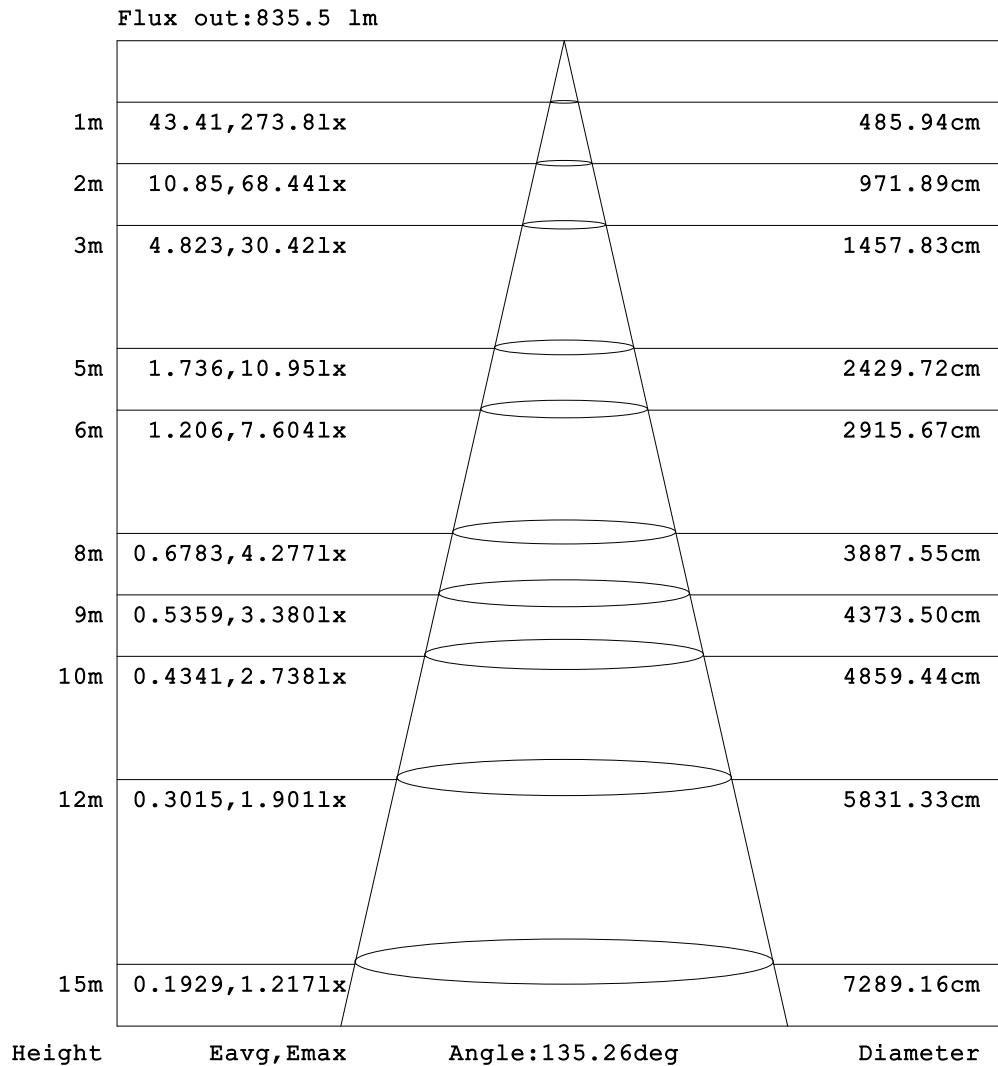


C Range: 0 - 360DEG
 C Interval: 30.0DEG
 Test Speed: HIGH
 Temperature:25.3DEG
 Operators:admin
 Test Date:2022-03-16

□ Range: 0 - 180DEG
 □ Interval: 1.0DEG
 Test System:EVERFINE GO-2000B_V1 SYSTEM V2.00.411
 Humidity:65.0%
 Test Distance:8.780m [K=1.0000]
 Remarks:

AAI Figure

Test:U:120.08V I:0.2590A P:28.408W PF:0.9127 Freq:60.00Hz Lamp Flux:1325.38x1 lm		
NAME: ASD lighting Corp	TYPE:	WEIGHT:
SPEC.:ASD-LFC-AF-16D28-AC-NK-2700K	DIM.:	SERIAL No.:
MFR.: ASD lighting Corp	SUR.:0.38*0.38	Shielding Angle:



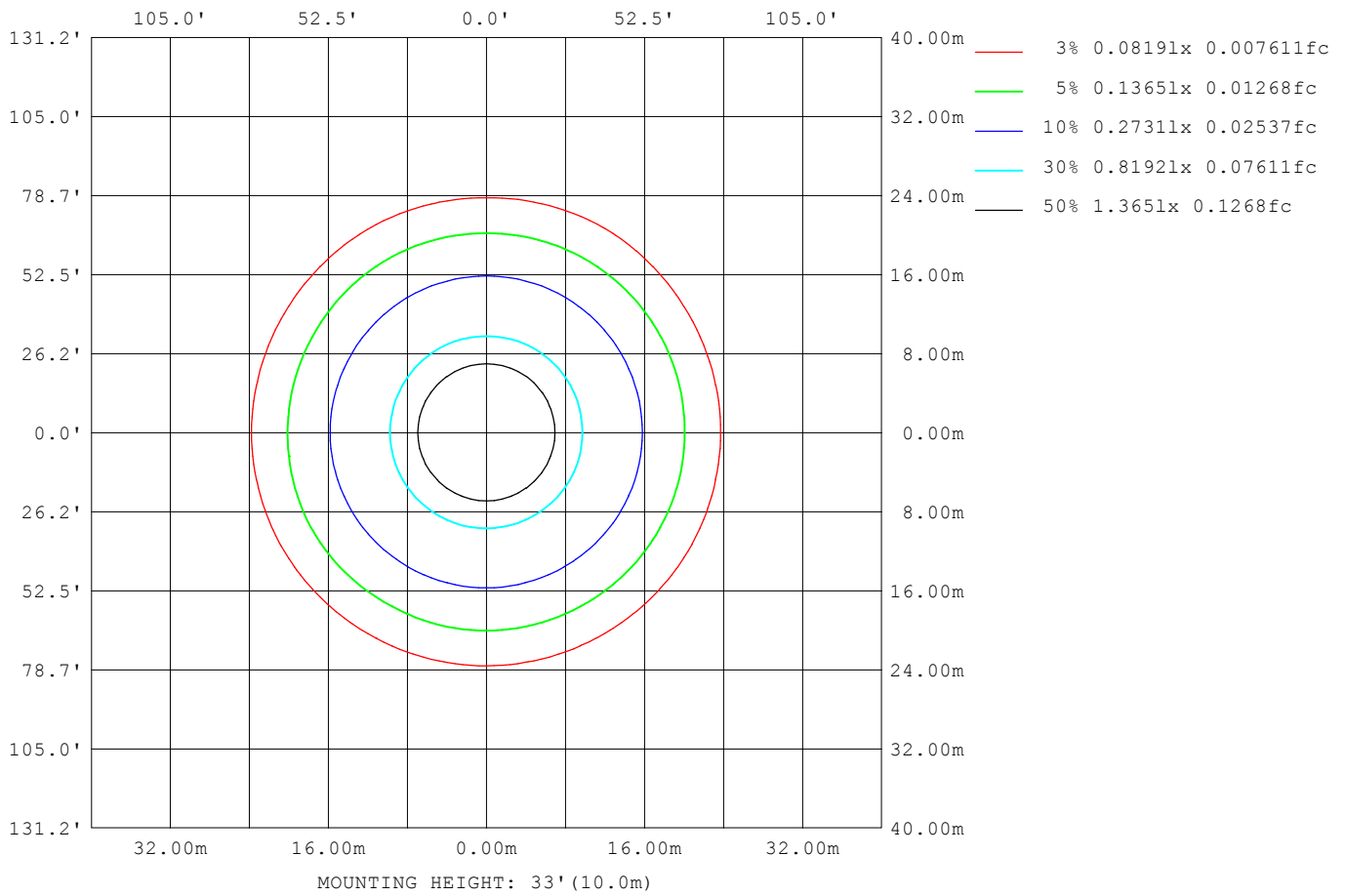
Note:The Curves indicate the illuminated area and the average illumination when the luminaire is at different distance.

C Range: 0 - 360DEG
 C Interval: 30.0DEG
 Test Speed: HIGH
 Temperature:25.3DEG
 Operators:admin
 Test Date:2022-03-16

Range: 0 - 180DEG
 Interval: 1.0DEG
 Test System:EVERFINE GO-2000B_V1 SYSTEM V2.00.411
 Humidity:65.0%
 Test Distance:8.780m [K=1.0000]
 Remarks:

ISOLUX DIAGRAM

Test:U:120.08V I:0.2590A P:28.408W PF:0.9127 Freq:60.00Hz Lamp Flux:1325.38x1 lm		
NAME: ASD lighting Corp	TYPE:	WEIGHT:
SPEC.:ASD-LFC-AF-16D28-AC-NK-2700K	DIM.:	SERIAL No.:
MFR.: ASD lighting Corp	SUR.:0.38*0.38	Shielding Angle:



C Range: 0 - 360DEG
 C Interval: 30.0DEG
 Test Speed: HIGH
 Temperature:25.3DEG
 Operators:admin
 Test Date:2022-03-16

Range: 0 - 180DEG
 Interval: 1.0DEG
 Test System:EVERFINE GO-2000B_V1 SYSTEM V2.00.411
 Humidity:65.0%
 Test Distance:8.780m [K=1.0000]
 Remarks:

LED Avg.L Report

Test:U:120.08V I:0.2590A P:28.408W PF:0.9127 Freq:60.00Hz Lamp Flux:1325.38x1 lm		
NAME: ASD lighting Corp	TYPE:	WEIGHT:
SPEC.:ASD-LFC-AF-16D28-AC-NK-2700K	DIM.:	SERIAL No.:
MFR.: ASD lighting Corp	SUR.:0.38*0.38	Shielding Angle:

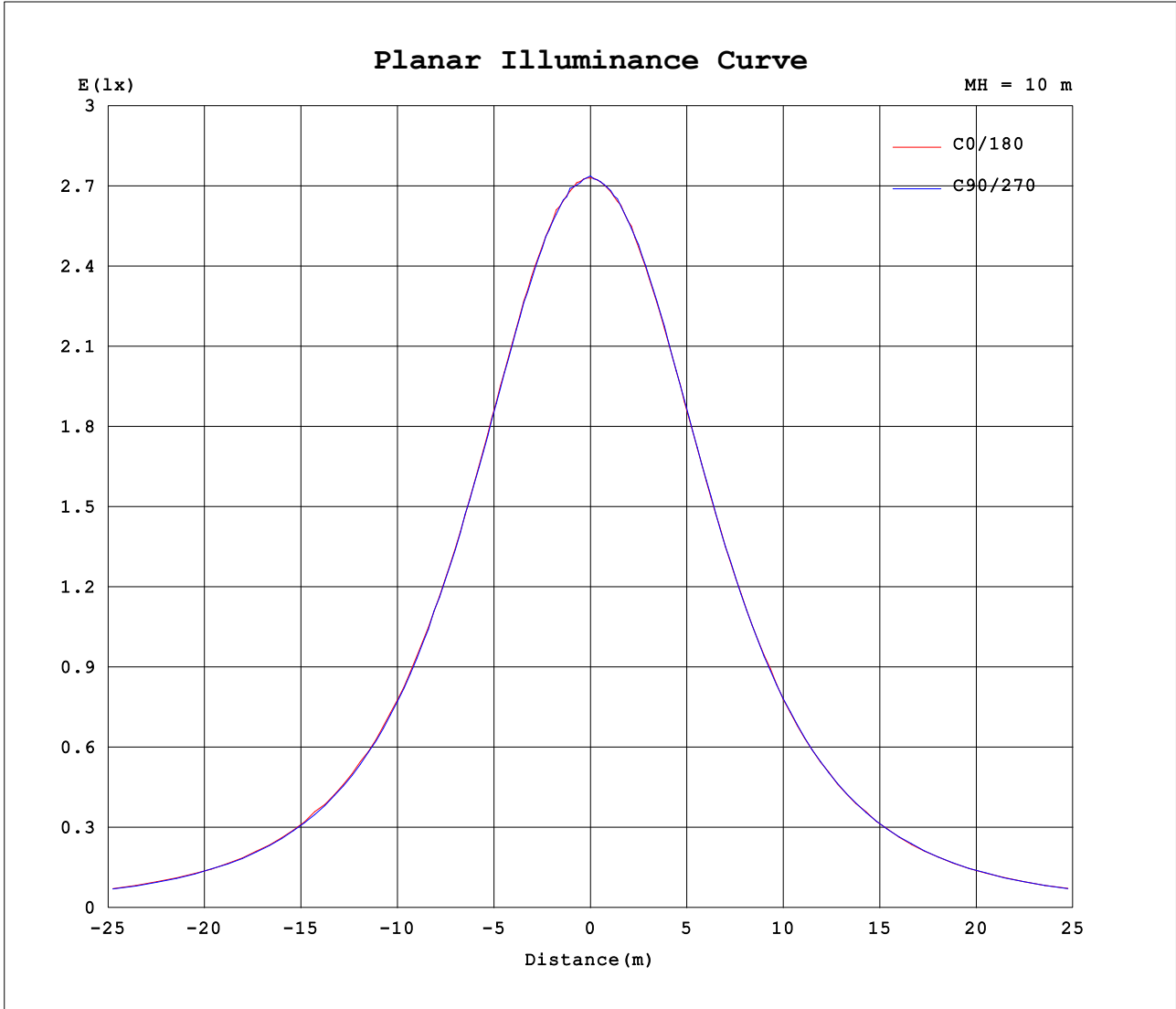
AvgL	cd/m2
L_0~180 (65) av	2449
L_0~180 (75) av	2847
L_0~180 (85) av	5441
L_90~270 (65) av	2419
L_90~270 (75) av	2897
L_90~270 (85) av	5447
L_45 (65) av	2449
L_45 (75) av	2876
L_45 (85) av	5433

Standard: GB/T 29293-2012

C Range: 0 - 360DEG
 C Interval: 30.0DEG
 Test Speed: HIGH
 Temperature:25.3DEG
 Operators:admin
 Test Date:2022-03-16

Range: 0 - 180DEG
 Interval: 1.0DEG
 Test System:EVERFINE GO-2000B_V1 SYSTEM V2.00.411
 Humidity:65.0%
 Test Distance:8.780m [K=1.0000]
 Remarks:

Planar Illuminance Curve



C Range: 0 - 360DEG
 C Interval: 30.0DEG
 Test Speed: HIGH
 Temperature:25.3DEG
 Operators:admin
 Test Date:2022-03-16

Range: 0 - 180DEG
 Interval: 1.0DEG
 Test System:EVERFINE GO-2000B_V1 SYSTEM V2.00.411
 Humidity:65.0%
 Test Distance:8.780m [K=1.0000]
 Remarks:

LUMINOUS DISTRIBUTION INTENSITY DATA

Test:U:120.08V I:0.2590A P:28.408W PF:0.9127 Freq:60.00Hz Lamp Flux:1325.38x1 lm		
NAME: ASD lighting Corp	TYPE:	WEIGHT:
SPEC.:ASD-LFC-AF-16D28-AC-NK-2700K	DIM.:	SERIAL No.:
MFR.: ASD lighting Corp	SUR.:0.38*0.38	Shielding Angle:

Table--1

UNIT: cd

C (DEG) □ (DEG)	0	30	60	90	120	150	180	210	240	270	300	330								
0	273	273	274	274	274	274	273	273	274	274	274	274								
5	273	274	273	273	272	273	272	273	274	273	274	273								
10	273	273	272	272	273	272	272	272	272	272	273	272								
15	271	271	270	270	270	270	270	270	271	271	271	271								
20	267	267	266	266	267	267	267	268	267	268	268	267								
25	262	261	261	261	261	262	263	262	263	263	263	264								
30	255	255	254	254	254	256	256	255	256	256	256	255								
35	245	245	244	244	244	245	246	246	246	246	247	246								
40	234	233	232	232	233	233	235	236	235	235	235	234								
45	220	219	218	218	219	222	221	221	222	221	223	221								
50	206	203	202	202	203	205	206	206	207	206	208	206								
55	190	187	184	185	187	187	190	188	189	189	190	188								
60	170	167	167	167	168	169	169	170	170	170	174	170								
65	149	148	146	146	149	154	150	149	152	149	150	149								
70	127	126	127	125	130	130	129	130	131	130	130	129								
75	106	105	104	107	106	109	107	109	110	110	111	106								
80	86.9	84.8	84.9	86.0	87.6	88.1	88.1	87.2	88.3	89.8	88.1	86.2								
85	66.9	66.8	66.4	68.0	68.9	69.8	70.0	69.1	69.6	69.2	69.0	67.6								
90	54.7	54.5	54.7	56.1	56.9	57.4	57.3	56.2	56.2	55.7	55.6	54.9								
95	49.9	49.5	49.5	51.1	51.7	52.3	51.6	50.9	50.1	50.0	49.6	49.6								
100	50.3	49.4	49.0	50.3	51.0	52.1	51.7	50.6	49.3	49.4	48.9	49.5								
105	50.7	49.4	48.3	49.6	50.4	51.7	51.9	50.5	48.8	49.2	48.5	49.7								
110	50.8	49.2	47.7	48.8	49.7	51.3	51.8	50.2	48.2	48.3	47.9	49.4								
115	45.8	48.5	46.6	47.8	48.7	50.5	46.4	49.3	47.3	47.3	47.1	48.7								
120	44.2	46.9	45.0	47.0	47.1	48.6	44.6	47.4	46.4	46.6	46.1	47.2								
125	43.6	44.2	42.4	45.6	44.4	45.8	44.0	44.7	43.6	45.5	43.3	44.4								
130	42.7	41.3	39.7	44.2	41.3	42.8	43.3	41.7	40.2	44.1	39.9	41.7								
135	41.6	38.8	37.3	42.6	38.7	40.0	42.3	39.2	37.4	42.2	37.4	39.3								
140	40.4	36.1	34.8	39.6	36.0	37.5	41.0	36.5	34.7	39.3	35.1	36.8								
145	38.1	33.8	32.5	36.7	33.4	35.4	38.5	34.1	32.3	36.3	32.7	34.4								
150	34.9	32.4	31.0	33.4	31.4	33.9	35.6	32.9	30.6	32.8	31.1	32.8								
155	31.8	29.7	29.1	30.5	30.0	31.4	32.7	30.7	29.4	30.5	29.5	30.6								
160	29.8	28.7	27.0	28.4	28.9	29.0	30.1	27.7	28.2	28.1	27.4	29.0								
165	28.2	27.4	25.6	26.4	27.0	26.9	28.7	26.2	27.1	26.2	25.2	27.4								
170	27.2	25.6	24.6	25.7	24.9	25.6	27.3	25.2	24.8	25.2	23.7	24.7								
175	29.1	29.2	26.4	29.0	29.6	27.0	28.9	26.7	28.7	28.3	26.0	28.4								
180	31.1	29.0	28.9	31.4	29.4	28.8	31.1	29.0	28.9	31.4	29.4	28.8								

C Range: 0 - 360DEG
 C Interval: 30.0DEG
 Test Speed: HIGH
 Temperature:25.3DEG
 Operators:admin
 Test Date:2022-03-16

□ Range: 0 - 180DEG
 □ Interval: 1.0DEG
 Test System:EVERFINE GO-2000B_V1 SYSTEM V2.00.411
 Humidity:65.0%
 Test Distance:8.780m [K=1.0000]
 Remarks: