



LED OUTDOOR WALL SCONCE

► **DESIGN** - LED OUTDOOR WALL SCONCE has a modern, multipurpose design and a stylish look with efficient lighting. The clear seeded glass shade with a 160° beam angle filled with air bubbles emits a luxurious glow. The white acrylic glass with a 160° beam angle creates a peaceful and elegant atmosphere. It is designed to operate on 120V circuits and provides smooth triac dimming capabilities ranging from 10% to 100%.

► **COLOR SELECTABLE** - You can choose either a 3,000K warm white, 4,000K cool white or 5,000K daylight color temperature.

► Durable waterproof housing resistant to rust and impact can be used outdoors in all weather conditions.

► **APPLICATION** - The fixture is rated for Wet Locations, making it perfect for indoor and outdoor projects such as decks, front doors, porches, patios, corridors, walkways, or any other common areas.

► **ADVANTAGES** - With a lifespan of 50,000 hours, these fixtures are made to last decades under normal operation! ASD provides a 5-year limited warranty along with ETL certification to guarantee top quality products and safety!

| | |
|----------------|--|
| Catalog number | |
| Notes | |
| Type | |



| Model | Size | Watts | Voltage | Dimmable | Lumens | CCT | Finish | Dimensions (LxWxH) |
|-----------------------|---------|-------|---------|----------|----------------|----------------------------|--------|-----------------------|
| ASD-LWS24S-14D12CC-BK | 14 inch | 12W | 120 V | TRIAC | 408/463/415 lm | 3CCT (3,000/4,000/5,000 K) | Black | 4-3/4" x 5" x 13-7/8" |
| ASD-LWS24W-14D12CC-BK | 14 inch | 12W | 120 V | TRIAC | 666/737/709 lm | 3CCT (3,000/4,000/5,000 K) | Black | 4-3/4" x 5" x 13-7/8" |

ORDERING INFORMATION

| Model | UPC | Pcs. per carton | Carton size | Carton weight | GTIN 14 |
|-----------------------|--------------|-----------------|-----------------------|---------------|----------------|
| ASD-LWS24S-14D12CC-BK | 810050734837 | 4 | 14.4" x 13.6" x 16.3" | 17.9 lbs | 30810050734838 |
| ASD-LWS24W-14D12CC-BK | 810050734844 | 4 | 13.6" x 13.6" x 16.3" | 26.1 lbs | 30810050734845 |

For most up-to-date spec sheets please refer to asd-lighting.com



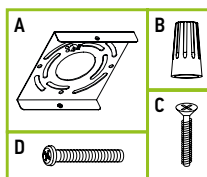
LED OUTDOOR WALL SCONCE

PRODUCT SPECIFICATIONS:

| Construction & Materials | | | | |
|--------------------------------------|---|------------------|---------------|-------|
| Housing | Aluminum | | | |
| Lens | Clear seeded glass, White acrylic glass | | | |
| Finish | Black | | | |
| Weight | ASD-LWS24S-14D12CC-BK | 3.9 lbs (1.8 kg) | | |
| | ASD-LWS24W-14D12CC-BK | 5.7 lbs (2.6 kg) | | |
| Environmental system | | | | |
| Work environment | Suitable for Wet Locations | | | |
| Operating temperature | -40°F to 113°F (-40°C to 45°C) | | | |
| L-70 Life | > 50,000 hrs | | | |
| Optical system | | | | |
| Luminous flux | ASD-LWS24S-14D12CC-BK | 408/463/415 lm | | |
| | ASD-LWS24W-14D12CC-BK | 666/737/709 lm | | |
| Color temperature | 3CCT (3,000/4,000/5,000 K) | | | |
| CRI | > 80 | | | |
| Electrical system | | | | |
| Input voltage | 120 V | | | |
| Max input current | 0.16 A | | | |
| Inrush current (Action time) | 0.1 A (0.1 S) | | | |
| Off state power | 0W | | | |
| Power consumption | 12W | | | |
| Power factor | > 0.9 | | | |
| Output voltage | 36 V | | | |
| Max output current | 0.3 A | | | |
| Surge protection DM/CM | 1.25 kV / 1.25 kV | | | |
| Dimming range | | | | |
| 10-100% | | | | |
| Dimming compatible controls | | | | |
| Brand | Lutron | | Leviton | |
| Models | MACL-153MLH-WH | DVCL-153PR | R02-DW6HD-2RW | DSL06 |
| | STCL-153PH-WH | P-PKG1W | R00-RNL06-0TW | |
| | PD-6WCL-WH-R | | R68-06674-POT | |
| Regular and voluntary certifications | | | | |
| 5-year limited warranty | | | | |
| cETLus certified 4001256 | | | | |

PACKAGE CONTENTS:

| Description | Q-ty |
|-------------------------|------|
| LED Outdoor Wall Sconce | 1 |
| Mounting plate (A) | 1 |
| Wire nut (B) | 3 |
| Black screw (C) | 2 |
| Mounting screw (D) | 2 |
| Box | 1 |



INSTALLATION GUIDE

IMPORTANT SAFETY INFORMATION:

Please read all the instructions below before installation.

- ▶ Make sure that the supply voltage corresponds to the rated product voltage.
- ▶ The product must be installed by a qualified electrician in accordance with the National Electrical Code and corresponding local codes.
- ▶ If the product is damaged, do not use it.

⚠ WARNING

RISK OF PERSONAL INJURY – READ and follow all WARNINGS and installation instructions. Keep or give to the owner for future reference.

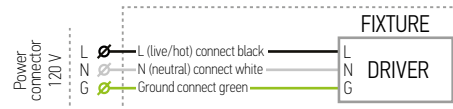
Risk of cuts: Wear gloves to prevent cuts or abrasions when removing from carton, handling, installing, and maintaining this product.

Risk of electric shock: This product must be installed in accordance with the applicable installation code by a person familiar with the construction and operation of the product and the hazards involved.

Risk of Fire: Minimum 194°F supply conductors. Consult a qualified electrician to ensure correct branch circuit conductor.

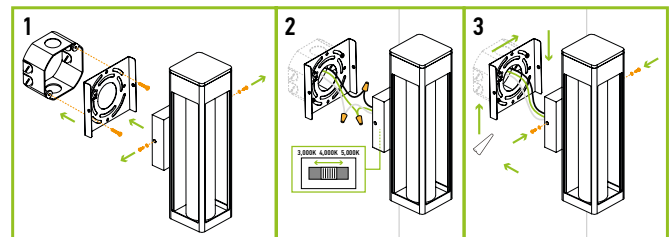
ASD® assumes no responsibility for claims arising out of improper or careless installation or handling of this product.

ELECTRICAL SCHEMATIC DIAGRAM:



INSTALLATION STEPS:

1. Remove the mounting plate by unscrewing the screws from both sides of the fixture. Screw the two mounting screws onto the mounting plate. Attach the mounting plate to the outlet box using screws.
2. Choose needed color temperature by adjusting switch position. Connect the wires: Black to Black, White to White, Ground to Ground. Secure the connection with the wire nuts.
3. Attach the fixture to the mounting plate with screws. Before tightening the screws, try to fit the fixture to ensure the appropriate holes match. For outdoor locations it is recommended to use silicone (not included) shown in the picture below.



For most up-to-date spec sheets please refer to asd-lighting.com