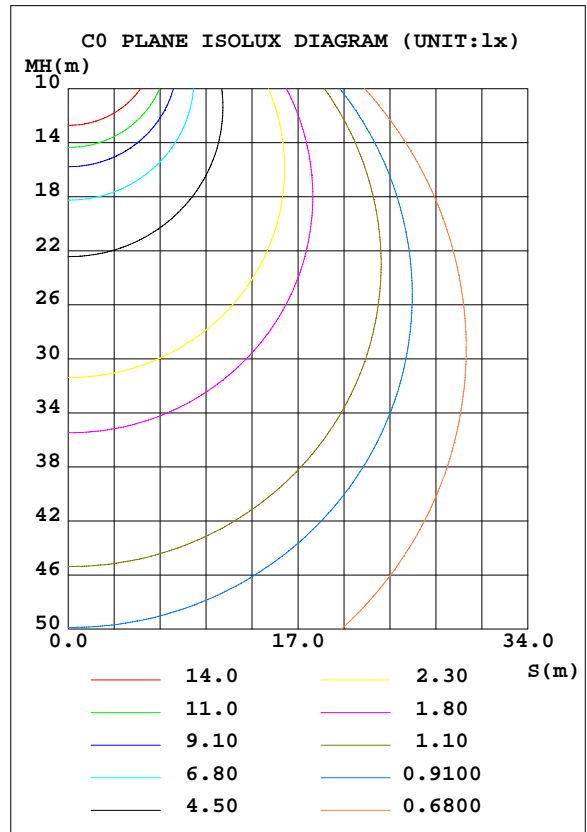
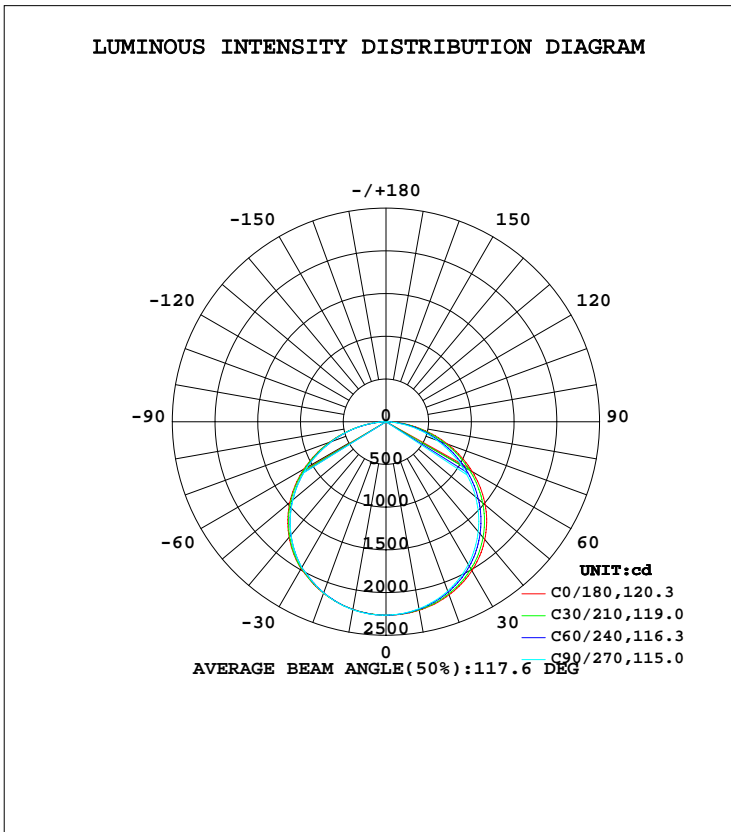


LUMINAIRE PHOTOMETRIC TEST REPORT

Test:U:120.0V I:0.4096A P:48.67W PF:0.9928 Freq:60.00Hz Lamp Flux:6500x1 lm		
NAME: ASD Lighting Corp	TYPE:LED	WEIGHT:
SPEC.:ASD-BLP-24D50CC-PRM(3000K)	DIM.:	SERIAL No.:
MFR.: ASD Lighting Corp	SUR.:	Shielding Angle:

DATA OF LAMP		PHOTOMETRIC DATA Eff: 141.27 lm/W			
MODEL	ASD-BLP-24D50CC-PRM	I <sub>max</sub> (cd)	2264	S/MH(C0/180)	1.31
NOMINAL POWER(W)	50	LOR(%)	100.0	S/MH(C90/270)	1.29
RATED VOLTAGE(V)	120-277	TOTAL FLUX(lm)	6500	η UP, DN(C0-180)	0.0,49.6
NOMINAL FLUX(lm)	6500	CIE CLASS	DIRECT	η UP, DN(C180-360)	0.0,50.4
LAMPS INSIDE	1	η up(%)	0.1	CIBSE SHR NOM	1.50
TEST VOLTAGE(V)	120	η down(%)	99.9	CIBSE SHR MAX	1.50



C Range: 0 - 360DEG  
 C Interval: 15.0DEG  
 Test Speed: HIGH  
 Temperature: 25.3DEG  
 Operators: Alan Wang  
 Test Date: 25 March 2020

γ Range: 0 - 180DEG  
 γ Interval: 1.0DEG  
 Test System: EVERFINE GO-R5000\_V2 SYSTEM V2.0.362  
 Humidity: 54.0%  
 Test Distance: 2.500m [K=0.9942]  
 Remarks:

ZONAL FLUX DIAGRAM

ZONAL FLUX DIAGRAM:

$\gamma$	C0	C45	C90	C135	C180	C225	C270	C315	$\gamma$	$\Phi$ zone	$\Phi$ total	%lum,lamp
10	2240	2232	2222	2224	2230	2230	2234	2239	0- 10	214.5	214.5	3.12,3.12
20	2157	2135	2109	2118	2135	2130	2132	2149	10- 20	618.7	833.2	12.1,12.1
30	2012	1980	1928	1957	1986	1964	1971	1993	20- 30	950.2	1783	25.9,25.9
40	1799	1753	1679	1717	1764	1730	1729	1768	30- 40	1168	2951	42.9,42.9
50	1516	1457	1370	1412	1469	1429	1424	1476	40- 50	1235	4186	60.9,60.9
60	1166	1103	1012	1050	1109	1071	1066	1123	50- 60	1136	5323	77.4,77.4
70	767.6	711.7	632.1	653.6	704.2	680.1	678.1	730.7	60- 70	884.2	6207	90.3,90.3
80	351.9	322.5	259.0	266.9	293.4	289.9	293.5	332.6	70- 80	523.2	6730	97.9,97.9
90	15.36	1.309	0.2994	0.1112	0.4073	5.999	0.4629	10.23	80- 90	141.0	6871	99.9,99.9
100	0.2192	0.2005	0.2078	0.2319	0.6295	0.5926	0.5647	0.5663	90-100	0.8358	6872	99.9,99.9
110	0.3232	0.2519	0.2885	0.3504	0.6534	0.6312	0.6391	0.6317	100-110	0.4712	6872	100,100
120	0.5521	0.3699	0.4243	0.5384	0.7392	0.6395	0.6162	0.6220	110-120	0.4942	6873	100,100
130	0.7545	0.5688	0.6048	0.7207	0.9369	0.9487	0.8920	0.8187	120-130	0.5928	6873	100,100
140	0.8726	0.7170	0.7366	0.8236	1.033	1.091	1.109	0.9830	130-140	0.6593	6874	100,100
150	0.9402	0.7802	0.7282	0.8756	1.178	1.224	1.196	1.137	140-150	0.6031	6874	100,100
160	1.106	0.8929	0.7525	0.9967	1.355	1.390	1.244	1.249	150-160	0.4912	6875	100,100
170	1.309	1.182	0.9758	1.203	1.405	1.531	1.294	1.284	160-170	0.3369	6875	100,100
180	1.372	1.350	1.217	1.214	1.371	1.351	1.219	1.215	170-180	0.1226	6875	100,100
DEG	LUMINOUS INTENSITY:cd Less than 35% Percent = 13.7 %									UNIT:lm		

Conical surface Flux(90deg): 3570.7 lm

%lum = 51.9%  
 %lamp = 51.9%

Conical surface Flux(120deg): 5322.5 lm

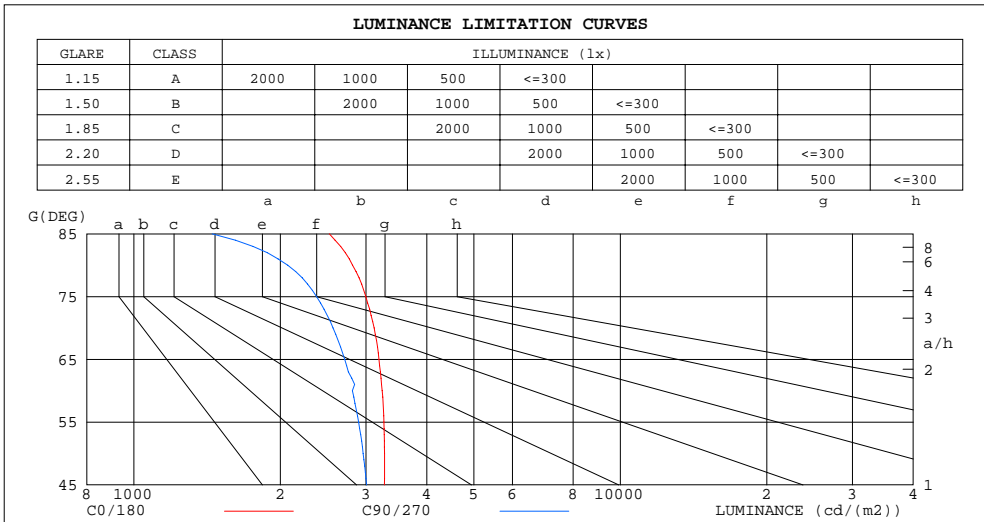
%lum = 77.4%  
 %lamp = 77.4%

C Range: 0 - 360DEG  
 C Interval: 15.0DEG  
 Test Speed: HIGH  
 Temperature: 25.3DEG  
 Operators: Alan Wang  
 Test Date: 25 March 2020

$\gamma$  Range: 0 - 180DEG  
 $\gamma$  Interval: 1.0DEG  
 Test System: EVERFINE GO-R5000\_V2 SYSTEM V2.0.362  
 Humidity: 54.0%  
 Test Distance: 2.500m [K=0.9942]  
 Remarks:

LUMINANCE LIMITATION CURVES

Test:U:120.0V I:0.4096A P:48.67W PF:0.9928 Freq:60.00Hz Lamp Flux:6500x1 lm		
NAME: ASD Lighting Corp	TYPE:LED	WEIGHT:
SPEC.:ASD-BLP-24D50CC-PRM(3000K)	DIM.:	SERIAL No.:
MFR.: ASD Lighting Corp	SUR.:	Shielding Angle:



LUMINANCE cd/(m2)		
G(DEG)	C0/180	C90/270
85	2522	1448
80	2815	2072
75	2997	2374
70	3118	2567
65	3190	2713
60	3238	2813
55	3267	2897
50	3275	2960
45	3274	3010

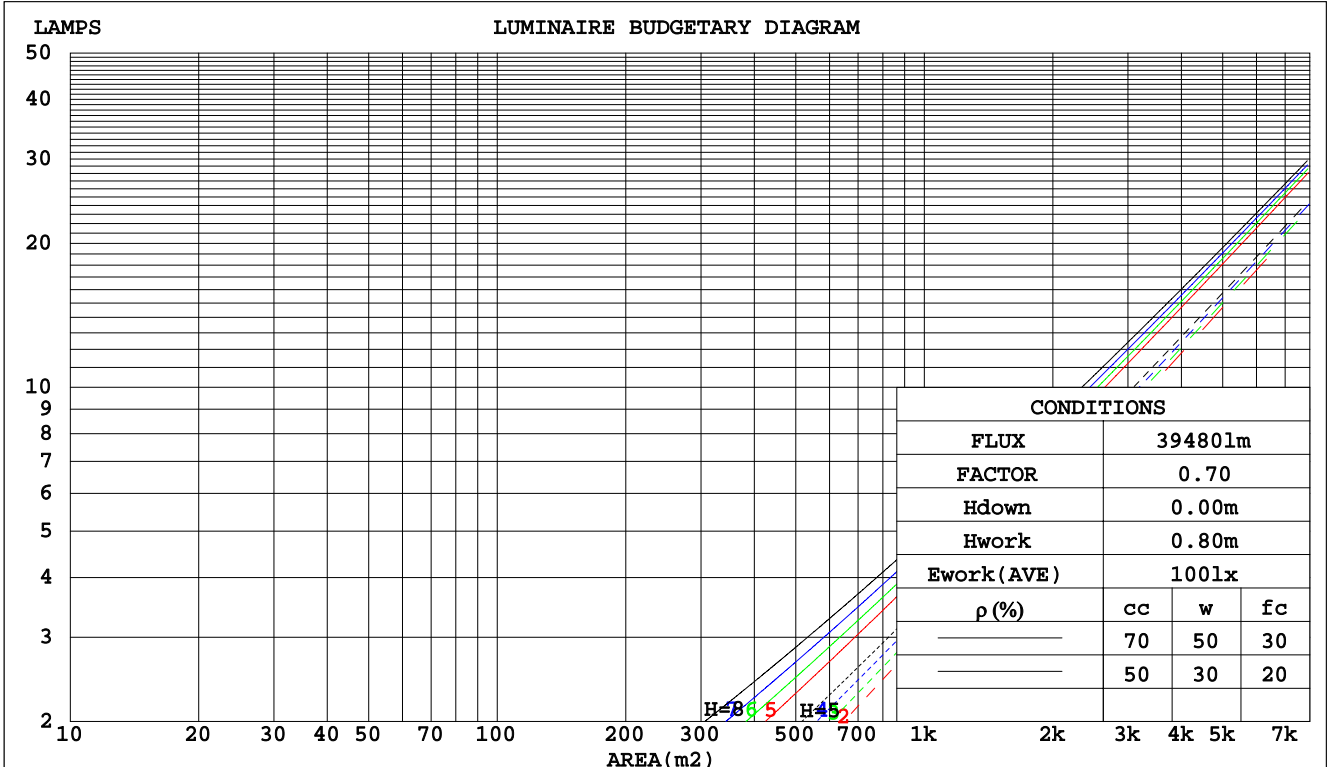
C Range: 0 - 360DEG  
 C Interval: 15.0DEG  
 Test Speed: HIGH  
 Temperature: 25.3DEG  
 Operators: Alan Wang  
 Test Date: 25 March 2020

γ Range: 0 - 180DEG  
 γ Interval: 1.0DEG  
 Test System: EVERFINE GO-R5000\_V2 SYSTEM V2.0.362  
 Humidity: 54.0%  
 Test Distance: 2.500m [K=0.9942]  
 Remarks:

CU AND LUMINAIRE BUDGETARY ESTIMATE DIAGRAM

Test:U:120.0V I:0.4096A P:48.67W PF:0.9928 Freq:60.00Hz Lamp Flux:6500x1 lm		
NAME: ASD Lighting Corp	TYPE:LED	WEIGHT:
SPEC.:ASD-BLP-24D50CC-PRM(3000K)	DIM.:	SERIAL No.:
MFR.: ASD Lighting Corp	SUR.:	Shielding Angle:

ρcc	80%			70%			50%			30%			10%			0														
ρw	50%	30%	10%	50%	30%	10%	50%	30%	10%	50%	30%	10%	50%	30%	10%	0														
ρfc	20%			20%			20%			20%			20%			0														
RCR	RCR:Room Cavity Ratio															Coefficients of Utilization(CU)														
0.0	1.19	1.19	1.19	1.16	1.16	1.16	1.11	1.11	1.11	1.06	1.06	1.06	1.02	1.02	1.02	.00														
1.0	1.03	.99	.95	1.01	.97	.94	.97	.94	.91	.93	.90	.88	.89	.87	.85	.83														
2.0	.90	.83	.77	.88	.81	.76	.84	.79	.74	.81	.76	.72	.78	.74	.71	.69														
3.0	.79	.70	.64	.77	.69	.63	.74	.67	.62	.71	.65	.61	.69	.64	.60	.57														
4.0	.69	.60	.54	.68	.60	.53	.66	.58	.52	.63	.57	.52	.61	.55	.51	.49														
5.0	.62	.53	.46	.61	.52	.46	.59	.51	.45	.57	.50	.45	.55	.49	.44	.42														
6.0	.56	.46	.40	.55	.46	.40	.53	.45	.39	.51	.44	.39	.49	.43	.39	.37														
7.0	.50	.41	.35	.49	.41	.35	.48	.40	.35	.46	.40	.34	.45	.39	.34	.32														
8.0	.46	.37	.31	.45	.37	.31	.44	.36	.31	.43	.36	.31	.41	.35	.31	.29														
9.0	.42	.34	.28	.41	.33	.28	.40	.33	.28	.39	.32	.28	.38	.32	.28	.26														
10.0	.39	.31	.25	.38	.31	.25	.37	.30	.25	.36	.30	.25	.35	.29	.25	.23														



C Range: 0 - 360DEG  
 C Interval: 15.0DEG  
 Test Speed: HIGH  
 Temperature: 25.3DEG  
 Operators: Alan Wang  
 Test Date: 25 March 2020

γ Range: 0 - 180DEG  
 γ Interval: 1.0DEG  
 Test System: EVERFINE GO-R5000\_V2 SYSTEM V2.0.362  
 Humidity: 54.0%  
 Test Distance: 2.500m [K=0.9942]  
 Remarks:

WEC AND CCEC

Test:U:120.0V I:0.4096A P:48.67W PF:0.9928 Freq:60.00Hz Lamp Flux:6500x1 lm		
NAME: ASD Lighting Corp	TYPE:LED	WEIGHT:
SPEC.:ASD-BLP-24D50CC-PRM(3000K)	DIM.:	SERIAL No.:
MFR.: ASD Lighting Corp	SUR.:	Shielding Angle:

ρcc	80%			70%			50%			30%			10%			0
ρw	50%	30%	10%	50%	30%	10%	50%	30%	10%	50%	30%	10%	50%	30%	10%	0
ρfc	20%			20%			20%			20%			20%			0
RCR	RCR:Room Cavity Ratio						Wall Exitance Coefficients(WEC)									
0.0																
1.0	.317	.180	.057	.310	.177	.056	.297	.170	.054	.284	.164	.053	.273	.158	.051	
2.0	.298	.163	.050	.291	.160	.049	.280	.155	.048	.269	.151	.047	.259	.146	.046	
3.0	.275	.146	.044	.269	.144	.043	.259	.140	.043	.249	.137	.042	.240	.133	.041	
4.0	.253	.132	.039	.248	.130	.038	.239	.127	.038	.230	.124	.037	.222	.121	.037	
5.0	.234	.119	.034	.229	.118	.034	.221	.115	.034	.213	.113	.033	.206	.110	.033	
6.0	.216	.108	.031	.213	.107	.031	.205	.105	.031	.198	.103	.030	.192	.101	.030	
7.0	.201	.099	.028	.198	.099	.028	.191	.097	.028	.185	.095	.028	.179	.093	.027	
8.0	.188	.092	.026	.185	.091	.026	.179	.089	.026	.173	.088	.025	.168	.086	.025	
9.0	.176	.085	.024	.173	.084	.024	.168	.083	.024	.163	.082	.023	.158	.080	.023	
10.0	.165	.079	.022	.163	.079	.022	.158	.077	.022	.153	.076	.022	.149	.075	.022	

ρcc	80%			70%			50%			30%			10%			0
ρw	50%	30%	10%	50%	30%	10%	50%	30%	10%	50%	30%	10%	50%	30%	10%	0
ρfc	20%			20%			20%			20%			20%			0
RCR	RCR:Room Cavity Ratio						Ceiling Cavity Exitance Coefficients(CCEC)									
0.0	.191	.191	.191	.163	.163	.163	.111	.111	.111	.064	.064	.064	.020	.020	.020	
1.0	.181	.157	.134	.155	.134	.116	.106	.092	.080	.061	.054	.046	.020	.017	.015	
2.0	.174	.132	.098	.149	.114	.085	.102	.079	.059	.059	.046	.035	.019	.015	.011	
3.0	.166	.115	.074	.142	.099	.064	.098	.069	.045	.056	.040	.027	.018	.013	.009	
4.0	.158	.102	.058	.136	.088	.051	.093	.061	.036	.054	.036	.021	.017	.012	.007	
5.0	.151	.091	.047	.130	.079	.041	.089	.055	.029	.052	.032	.017	.017	.011	.006	
6.0	.144	.083	.039	.124	.072	.034	.085	.050	.024	.049	.030	.014	.016	.010	.005	
7.0	.137	.076	.033	.118	.066	.029	.081	.046	.021	.047	.027	.012	.015	.009	.004	
8.0	.130	.070	.029	.112	.061	.025	.078	.043	.018	.045	.025	.011	.015	.008	.004	
9.0	.124	.065	.026	.107	.057	.022	.074	.040	.016	.043	.024	.009	.014	.008	.003	
10.0	.118	.061	.023	.102	.053	.020	.071	.037	.014	.041	.022	.008	.013	.007	.003	

C Range: 0 - 360DEG  
 C Interval: 15.0DEG  
 Test Speed: HIGH  
 Temperature: 25.3DEG  
 Operators: Alan Wang  
 Test Date: 25 March 2020

γ Range: 0 - 180DEG  
 γ Interval: 1.0DEG  
 Test System: EVERFINE GO-R5000\_V2 SYSTEM V2.0.362  
 Humidity: 54.0%  
 Test Distance: 2.500m [K=0.9942]  
 Remarks:

UGR(Unified Glare Rating) Table

Test:U:120.0V I:0.4096A P:48.67W PF:0.9928 Freq:60.00Hz Lamp Flux:6500x1 lm										
NAME: ASD Lighting Corp					TYPE:LED			WEIGHT:		
SPEC.:ASD-BLP-24D50CC-PRM(3000K)					DIM.:			SERIAL No.:		
MFR.: ASD Lighting Corp					SUR.:			Shielding Angle:		
ceiling/cavity	0.7	0.7	0.5	0.5	0.3	0.7	0.7	0.5	0.5	0.3
walls	0.5	0.3	0.5	0.3	0.3	0.5	0.3	0.5	0.3	0.3
working plane	0.2	0.2	0.2	0.2	0.2	0.2	0.2	0.2	0.2	0.2
Room dimensions	Viewed crosswise					Viewed endwise				
x = 2H y = 2H	10.5	12.0	10.8	12.2	12.5	9.9	11.4	10.2	11.7	11.9
3H	12.2	13.6	12.5	13.9	14.1	11.4	12.8	11.7	13.1	13.3
4H	12.9	14.3	13.3	14.6	14.8	12.0	13.4	12.3	13.6	13.9
6H	13.5	14.8	13.8	15.0	15.3	12.4	13.7	12.8	14.0	14.3
8H	13.7	14.9	14.0	15.2	15.5	12.5	13.8	12.9	14.1	14.4
12H	13.8	15.0	14.2	15.3	15.6	12.6	13.8	12.9	14.1	14.4
4H 2H	11.1	12.4	11.4	12.7	13.0	10.6	12.0	10.9	12.2	12.5
3H	13.0	14.2	13.3	14.5	14.8	12.3	13.5	12.7	13.8	14.1
4H	13.8	14.9	14.2	15.3	15.6	13.0	14.1	13.4	14.5	14.8
6H	14.5	15.5	15.0	15.9	16.2	13.6	14.6	14.0	14.9	15.3
8H	14.8	15.7	15.2	16.1	16.5	13.8	14.7	14.2	15.0	15.4
12H	15.0	15.8	15.4	16.2	16.6	13.8	14.7	14.3	15.1	15.5
8H 4H	14.1	15.0	14.5	15.4	15.8	13.4	14.3	13.8	14.7	15.1
6H	15.0	15.7	15.4	16.1	16.6	14.1	14.9	14.5	15.3	15.7
8H	15.3	16.0	15.8	16.4	16.9	14.4	15.0	14.8	15.4	15.9
12H	15.6	16.2	16.1	16.6	17.1	14.5	15.1	15.0	15.5	16.0
12H 4H	14.1	14.9	14.5	15.3	15.7	13.4	14.3	13.9	14.7	15.1
6H	15.0	15.7	15.5	16.1	16.6	14.2	14.9	14.7	15.3	15.7
8H	15.4	16.0	15.9	16.5	16.9	14.5	15.1	15.0	15.5	16.0
Variations with the observer position at spacings:										
S = 1.0H	+ 0.1 / - 0.2					+ 0.1 / - 0.2				
1.5H	+ 0.2 / - 0.3					+ 0.2 / - 0.3				
2.0H	+ 0.2 / - 0.3					+ 0.2 / - 0.4				

CIE Pub.117, 6875 lm Total Lamp Luminous Flux Correct (8log(F/F0) = 6.7)

C Range: 0 - 360DEG  
 C Interval: 15.0DEG  
 Test Speed: HIGH  
 Temperature: 25.3DEG  
 Operators: Alan Wang  
 Test Date: 25 March 2020

γ Range: 0 - 180DEG  
 γ Interval: 1.0DEG  
 Test System: EVERFINE GO-R5000\_V2 SYSTEM V2.0.362  
 Humidity: 54.0%  
 Test Distance: 2.500m [K=0.9942]  
 Remarks:

UTILIZATION FACTORS TABLE

Test:U:120.0V I:0.4096A P:48.67W PF:0.9928 Freq:60.00Hz Lamp Flux:6500x1 lm		
NAME: ASD Lighting Corp	TYPE:LED	WEIGHT:
SPEC.:ASD-BLP-24D50CC-PRM(3000K)	DIM.:	SERIAL No.:
MFR.: ASD Lighting Corp	SUR.:	Shielding Angle:

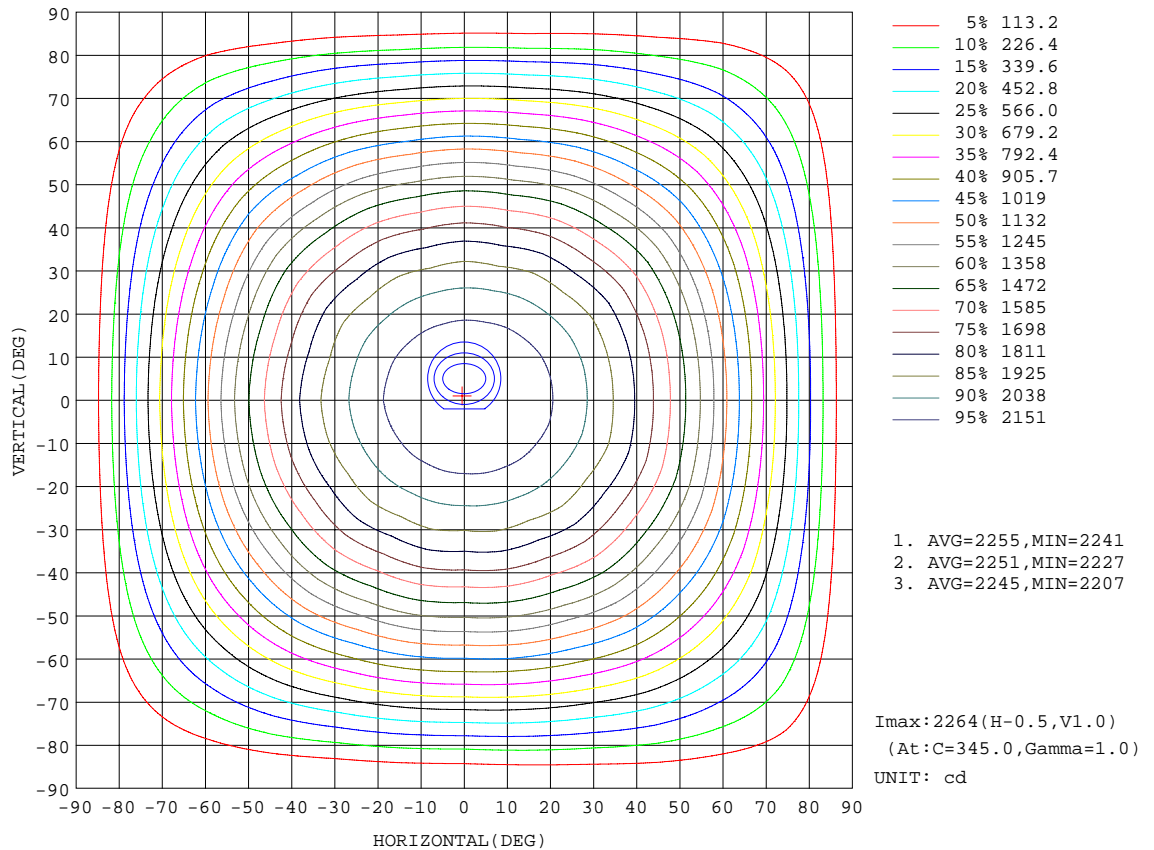
REFLECTANCE										
Ceiling	0.8	0.8	0.8	0.7	0.7	0.7	0.5	0.5	0.5	0
Walls	0.7	0.5	0.3	0.7	0.5	0.3	0.7	0.5	0.3	0
Working plane	0.2	0.2	0.2	0.2	0.2	0.2	0.2	0.2	0.2	0
ROOM INDEX	UTILIZATION FACTORS(PERCENT) k(RI) x RCR = 5									
k = 0.60	57	45	38	56	45	38	55	44	37	31
0.80	67	55	47	66	54	47	64	54	47	40
1.00	75	64	56	74	63	56	72	65	55	48
1.25	82	71	64	81	71	64	78	69	63	56
1.50	87	77	70	86	76	70	83	74	68	61
2.00	94	86	79	92	84	78	89	82	77	69
2.50	98	90	84	96	89	83	92	86	81	73
3.00	102	95	89	100	93	88	95	90	86	77
4.00	106	100	95	103	98	94	99	95	91	82
5.00	108	103	99	106	101	98	101	98	95	85
ROOM INDEX	UF(total)									Direct
According to DIN EN 13032-2 2004			Suspended				SHRNOM = 1.25			

C Range: 0 - 360DEG  
 C Interval: 15.0DEG  
 Test Speed: HIGH  
 Temperature: 25.3DEG  
 Operators: Alan Wang  
 Test Date: 25 March 2020

γ Range: 0 - 180DEG  
 γ Interval: 1.0DEG  
 Test System: EVERFINE GO-R5000\_V2 SYSTEM V2.0.362  
 Humidity: 54.0%  
 Test Distance: 2.500m [K=0.9942]  
 Remarks:

ISOCANDELA DIAGRAM

Test:U:120.0V I:0.4096A P:48.67W PF:0.9928 Freq:60.00Hz Lamp Flux:6500x1 lm		
NAME: ASD Lighting Corp	TYPE:LED	WEIGHT:
SPEC.:ASD-BLP-24D50CC-PRM(3000K)	DIM.:	SERIAL No.:
MFR.: ASD Lighting Corp	SUR.:	Shielding Angle:



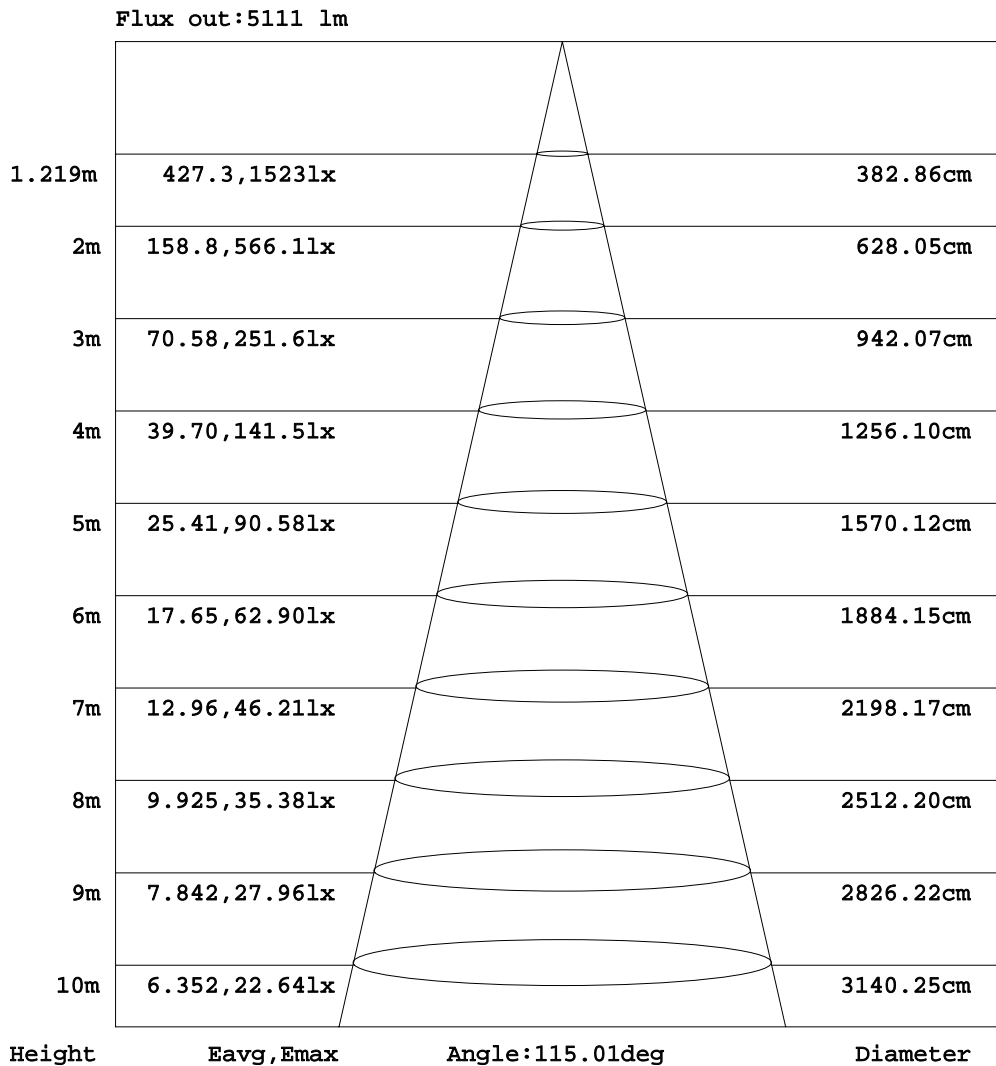
C Range: 0 - 360DEG  
 C Interval: 15.0DEG  
 Test Speed: HIGH  
 Temperature: 25.3DEG  
 Operators: Alan Wang  
 Test Date: 25 March 2020

γ Range: 0 - 180DEG  
 γ Interval: 1.0DEG  
 Test System: EVERFINE GO-R5000\_V2 SYSTEM V2.0.362  
 Humidity: 54.0%  
 Test Distance: 2.500m [K=0.9942]  
 Remarks:



AAI Figure

Test:U:120.0V I:0.4096A P:48.67W PF:0.9928 Freq:60.00Hz Lamp Flux:6500x1 lm		
NAME: ASD Lighting Corp	TYPE:LED	WEIGHT:
SPEC.:ASD-BLP-24D50CC-PRM(3000K)	DIM.:	SERIAL No.:
MFR.: ASD Lighting Corp	SUR.:	Shielding Angle:



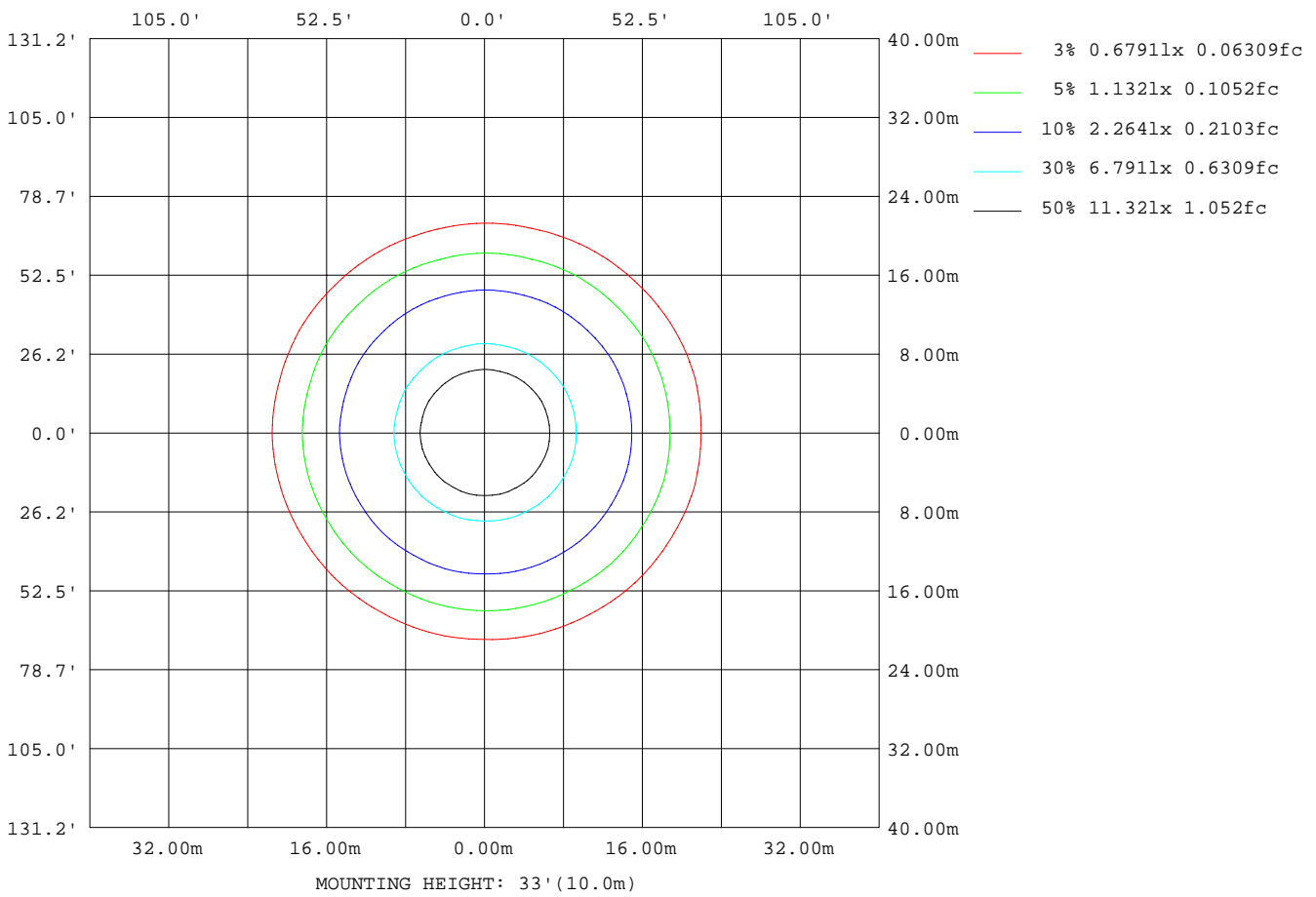
Note:The Curves indicate the illuminated area and the average illumination when the luminaire is at different distance.

C Range: 0 - 360DEG  
 C Interval: 15.0DEG  
 Test Speed: HIGH  
 Temperature: 25.3DEG  
 Operators:Alan Wang  
 Test Date:25 March 2020

γ Range: 0 - 180DEG  
 γ Interval: 1.0DEG  
 Test System:EVERFINE GO-R5000\_V2 SYSTEM V2.0.362  
 Humidity: 54.0%  
 Test Distance:2.500m [K=0.9942]  
 Remarks:

ISOLUX DIAGRAM

Test:U:120.0V I:0.4096A P:48.67W PF:0.9928 Freq:60.00Hz Lamp Flux:6500x1 lm		
NAME: ASD Lighting Corp	TYPE:LED	WEIGHT:
SPEC.:ASD-BLP-24D50CC-PRM(3000K)	DIM.:	SERIAL No.:
MFR.: ASD Lighting Corp	SUR.:	Shielding Angle:



C Range: 0 - 360DEG  
 C Interval: 15.0DEG  
 Test Speed: HIGH  
 Temperature: 25.3DEG  
 Operators: Alan Wang  
 Test Date: 25 March 2020

γ Range: 0 - 180DEG  
 γ Interval: 1.0DEG  
 Test System: EVERFINE GO-R5000\_V2 SYSTEM V2.0.362  
 Humidity: 54.0%  
 Test Distance: 2.500m [K=0.9942]  
 Remarks:

LED Avg.L Report

Test:U:120.0V I:0.4096A P:48.67W PF:0.9928 Freq:60.00Hz Lamp Flux:6500x1 lm		
NAME: ASD Lighting Corp	TYPE:LED	WEIGHT:
SPEC.:ASD-BLP-24D50CC-PRM(3000K)	DIM.:	SERIAL No.:
MFR.: ASD Lighting Corp	SUR.:	Shielding Angle:

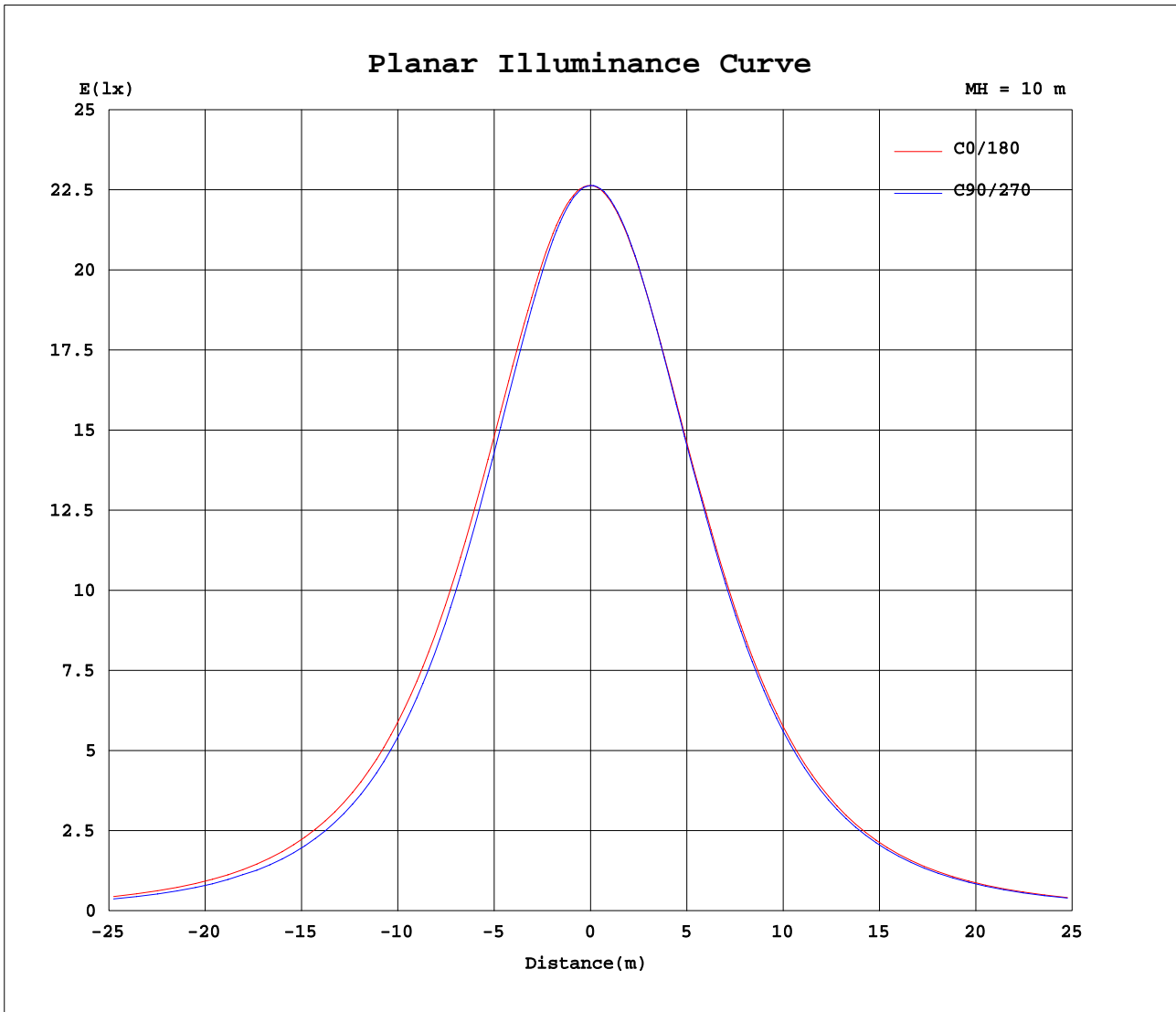
AvgL	cd/m2
L_0~180(65)av	3091
L_0~180(75)av	2830
L_0~180(85)av	2102
L_90~270(65)av	2792
L_90~270(75)av	2486
L_90~270(85)av	1655
L_45(65)av	2937
L_45(75)av	2655
L_45(85)av	1894

Standard: GB/T 29293-2012

C Range: 0 - 360DEG  
 C Interval: 15.0DEG  
 Test Speed: HIGH  
 Temperature: 25.3DEG  
 Operators:Alan Wang  
 Test Date:25 March 2020

γ Range: 0 - 180DEG  
 γ Interval: 1.0DEG  
 Test System:EVERFINE GO-R5000\_V2 SYSTEM V2.0.362  
 Humidity: 54.0%  
 Test Distance:2.500m [K=0.9942]  
 Remarks:

Planar Illuminance Curve



C Range: 0 - 360DEG  
C Interval: 15.0DEG  
Test Speed: HIGH  
Temperature: 25.3DEG  
Operators: Alan Wang  
Test Date: 25 March 2020

$\gamma$  Range: 0 - 180DEG  
 $\gamma$  Interval: 1.0DEG  
Test System: EVERFINE GO-R5000\_V2 SYSTEM V2.0.362  
Humidity: 54.0%  
Test Distance: 2.500m [K=0.9942]  
Remarks:

LUMINOUS DISTRIBUTION INTENSITY DATA

Test:U:120.0V I:0.4096A P:48.67W PF:0.9928 Freq:60.00Hz Lamp Flux:6500x1 lm		
NAME: ASD Lighting Corp	TYPE:LED	WEIGHT:
SPEC.:ASD-BLP-24D50CC-PRM(3000K)	DIM.:	SERIAL No.:
MFR.: ASD Lighting Corp	SUR.:	Shielding Angle:

Table--1

UNIT: cd

C(DEG) γ (DEG)	0	15	30	45	60	75	90	105	120	135	150	165	180	195	210	225	240	255	270
0	2263	2263	2263	2263	2263	2263	2263	2263	2263	2263	2263	2263	2263	2263	2263	2263	2263	2263	2263
5	2259	2259	2257	2255	2254	2253	2252	2251	2252	2252	2252	2252	2254	2253	2255	2255	2257	2257	2258
10	2240	2240	2235	2232	2229	2225	2222	2222	2221	2224	2225	2227	2230	2230	2231	2230	2231	2231	2234
15	2207	2206	2198	2191	2184	2179	2174	2174	2174	2179	2181	2185	2190	2189	2190	2188	2189	2189	2191
20	2157	2155	2144	2135	2124	2116	2109	2110	2111	2118	2122	2130	2135	2134	2134	2130	2130	2128	2132
25	2092	2090	2075	2063	2047	2037	2027	2029	2031	2041	2048	2058	2066	2062	2063	2055	2054	2051	2056
30	2012	2010	1989	1980	1952	1949	1928	1941	1934	1957	1956	1976	1986	1975	1980	1964	1970	1957	1971
35	1914	1920	1887	1877	1841	1834	1811	1825	1819	1846	1848	1873	1886	1870	1878	1855	1859	1844	1858
40	1799	1804	1767	1753	1714	1703	1679	1693	1689	1717	1724	1751	1764	1748	1754	1730	1731	1715	1729
45	1667	1671	1631	1613	1570	1557	1532	1545	1543	1573	1581	1610	1625	1609	1614	1587	1587	1570	1584
50	1516	1519	1478	1457	1412	1396	1370	1382	1381	1412	1422	1452	1469	1452	1457	1429	1427	1410	1424
55	1349	1351	1310	1286	1240	1222	1196	1207	1207	1237	1248	1278	1297	1280	1284	1257	1254	1238	1250
60	1166	1168	1127	1103	1058	1038	1012	1022	1021	1050	1061	1090	1109	1093	1098	1071	1068	1054	1066
65	970	973	935	910	871	847	825	829	831	854	867	891	910	899	900	880	875	865	874
70	768	769	735	712	675	653	632	635	635	654	664	685	704	693	697	680	677	669	678
75	558	562	533	514	481	463	442	444	441	456	461	479	496	487	495	481	481	475	484
80	352	358	335	322	295	279	259	261	255	267	267	279	293	286	298	290	291	285	294
85	158	165	149	138	118	105	90.9	89.5	84.0	87.0	88.0	94.9	106	101	112	106	111	109	117
90	15.4	20.7	11.7	1.31	3.74	0.10	0.30	0.10	0.32	0.11	0.25	0.12	0.41	0.41	0.40	6.00	0.37	2.97	0.46
95	0.15	0.15	0.16	0.16	0.16	0.16	0.16	0.16	0.17	0.17	0.18	0.18	0.53	0.53	0.51	0.51	0.49	0.48	0.46
100	0.22	0.21	0.20	0.20	0.20	0.21	0.21	0.21	0.22	0.23	0.24	0.24	0.63	0.62	0.60	0.59	0.58	0.57	0.56
105	0.27	0.26	0.24	0.23	0.24	0.24	0.24	0.26	0.28	0.29	0.29	0.30	0.68	0.66	0.65	0.65	0.65	0.64	0.64
110	0.32	0.30	0.27	0.25	0.26	0.27	0.29	0.31	0.33	0.35	0.37	0.37	0.65	0.63	0.62	0.63	0.63	0.63	0.64
115	0.43	0.35	0.33	0.30	0.29	0.33	0.35	0.38	0.41	0.43	0.46	0.46	0.64	0.61	0.60	0.60	0.59	0.60	0.61
120	0.55	0.46	0.42	0.37	0.37	0.40	0.42	0.46	0.51	0.54	0.58	0.57	0.74	0.70	0.67	0.64	0.61	0.60	0.62
125	0.67	0.58	0.51	0.47	0.46	0.47	0.52	0.55	0.61	0.65	0.67	0.68	0.86	0.84	0.81	0.79	0.73	0.71	0.71
130	0.75	0.68	0.61	0.57	0.57	0.58	0.60	0.63	0.69	0.72	0.74	0.76	0.94	0.94	0.93	0.95	0.91	0.90	0.89
135	0.84	0.76	0.70	0.65	0.65	0.66	0.68	0.71	0.76	0.78	0.80	0.83	1.00	1.00	1.01	1.04	1.05	1.05	1.03
140	0.87	0.83	0.78	0.72	0.70	0.72	0.74	0.74	0.80	0.82	0.84	0.87	1.03	1.04	1.05	1.09	1.10	1.13	1.11
145	0.91	0.89	0.82	0.75	0.71	0.74	0.75	0.76	0.83	0.85	0.86	0.91	1.10	1.11	1.10	1.16	1.15	1.18	1.17
150	0.94	0.93	0.85	0.78	0.71	0.74	0.73	0.75	0.84	0.88	0.88	0.93	1.18	1.18	1.15	1.22	1.20	1.23	1.20
155	0.99	1.01	0.95	0.82	0.77	0.81	0.75	0.81	0.89	0.92	0.96	0.98	1.23	1.29	1.28	1.29	1.27	1.27	1.23
160	1.11	1.12	1.03	0.89	0.78	0.80	0.75	0.84	0.95	1.00	1.03	1.08	1.35	1.40	1.37	1.39	1.34	1.30	1.24
165	1.21	1.22	1.15	1.02	0.86	0.87	0.82	0.92	1.04	1.11	1.17	1.19	1.38	1.45	1.47	1.48	1.42	1.36	1.25
170	1.31	1.33	1.28	1.18	1.01	1.01	0.98	1.03	1.14	1.20	1.24	1.27	1.40	1.48	1.51	1.53	1.46	1.36	1.29
175	1.38	1.42	1.38	1.34	1.18	1.18	1.10	1.13	1.23	1.22	1.26	1.31	1.41	1.46	1.46	1.45	1.42	1.32	1.30
180	1.37	1.41	1.38	1.35	1.31	1.26	1.22	1.17	1.18	1.21	1.23	1.29	1.37	1.41	1.37	1.35	1.31	1.26	1.22

C Range: 0 - 360DEG  
 C Interval: 15.0DEG  
 Test Speed: HIGH  
 Temperature: 25.3DEG  
 Operators: Alan Wang  
 Test Date: 25 March 2020

γ Range: 0 - 180DEG  
 γ Interval: 1.0DEG  
 Test System: EVERFINE GO-R5000\_V2 SYSTEM V2.0.362  
 Humidity: 54.0%  
 Test Distance: 2.500m [K=0.9942]  
 Remarks:

LUMINOUS DISTRIBUTION INTENSITY DATA

Test:U:120.0V I:0.4096A P:48.67W PF:0.9928 Freq:60.00Hz Lamp Flux:6500x1 lm		
NAME: ASD Lighting Corp	TYPE:LED	WEIGHT:
SPEC.:ASD-BLP-24D50CC-PRM(3000K)	DIM.:	SERIAL No.:
MFR.: ASD Lighting Corp	SUR.:	Shielding Angle:

Table--2

UNIT: cd

C(DEG) γ (DEG)	285	300	315	330	345														
0	2263	2263	2263	2263	2263														
5	2258	2259	2260	2260	2260														
10	2235	2238	2239	2242	2242														
15	2193	2200	2203	2208	2209														
20	2134	2144	2149	2157	2159														
25	2058	2071	2081	2092	2096														
30	1965	1988	1993	2011	2016														
35	1854	1883	1890	1920	1918														
40	1727	1758	1768	1802	1803														
45	1583	1617	1631	1668	1670														
50	1424	1460	1476	1515	1520														
55	1252	1288	1307	1346	1353														
60	1068	1104	1123	1162	1170														
65	879	910	931	966	992														
70	682	711	731	762	773														
75	487	512	528	556	564														
80	296	319	333	355	358														
85	118	134	144	164	165														
90	4.11	0.99	10.2	23.1	37.6														
95	0.47	0.46	0.47	0.46	0.47														
100	0.57	0.56	0.57	0.57	0.57														
105	0.63	0.64	0.64	0.64	0.63														
110	0.63	0.63	0.63	0.62	0.61														
115	0.61	0.60	0.60	0.59	0.60														
120	0.61	0.61	0.62	0.64	0.66														
125	0.70	0.68	0.72	0.73	0.78														
130	0.85	0.83	0.82	0.82	0.84														
135	0.98	0.94	0.89	0.89	0.91														
140	1.04	1.02	0.98	0.96	0.97														
145	1.13	1.11	1.08	1.04	1.06														
150	1.18	1.15	1.14	1.11	1.14														
155	1.22	1.20	1.19	1.22	1.19														
160	1.22	1.17	1.25	1.28	1.31														
165	1.21	1.22	1.27	1.31	1.31														
170	1.24	1.21	1.28	1.33	1.33														
175	1.30	1.21	1.32	1.31	1.33														
180	1.18	1.18	1.22	1.23	1.29														

C Range: 0 - 360DEG  
 C Interval: 15.0DEG  
 Test Speed: HIGH  
 Temperature: 25.3DEG  
 Operators: Alan Wang  
 Test Date: 25 March 2020

γ Range: 0 - 180DEG  
 γ Interval: 1.0DEG  
 Test System: EVERFINE GO-R5000\_V2 SYSTEM V2.0.362  
 Humidity: 54.0%  
 Test Distance: 2.500m [K=0.9942]  
 Remarks:

Photometric Data Table [cd]

G/C	0.0	15.0	30.0	45.0	60.0	75.0	90.0	105.0	120.0	135.0
0.0	2263	2263	2263	2263	2263	2263	2263	2263	2263	2263
3.0	2262	2263	2261	2261	2260	2259	2259	2259	2258	2258
6.0	2256	2257	2254	2252	2251	2249	2247	2247	2247	2247
9.0	2245	2245	2241	2238	2235	2232	2229	2229	2230	2231
12.0	2228	2228	2222	2218	2213	2209	2206	2206	2205	2208
15.0	2207	2206	2198	2191	2184	2179	2174	2174	2174	2179
18.0	2178	2177	2167	2159	2150	2144	2137	2138	2139	2144
21.0	2146	2143	2131	2122	2110	2101	2094	2096	2097	2104
24.0	2107	2104	2090	2079	2063	2054	2046	2048	2049	2058
27.0	2062	2059	2043	2029	2011	2003	1990	1996	1994	2007
30.0	2012	2010	1989	1980	1952	1949	1928	1941	1934	1957
33.0	1956	1962	1930	1922	1888	1882	1861	1873	1868	1892
36.0	1893	1899	1865	1853	1817	1809	1787	1800	1795	1822
39.0	1824	1829	1793	1779	1740	1731	1707	1720	1717	1744
42.0	1748	1753	1715	1699	1658	1646	1621	1635	1632	1661
45.0	1667	1671	1631	1613	1570	1557	1532	1545	1543	1573
48.0	1578	1582	1541	1522	1477	1462	1436	1449	1447	1478
51.0	1483	1487	1445	1424	1378	1362	1336	1348	1348	1378
54.0	1383	1386	1345	1321	1276	1258	1232	1243	1243	1273
57.0	1278	1280	1238	1214	1168	1150	1123	1134	1133	1164
60.0	1166	1168	1127	1103	1058	1038	1012	1022	1021	1050
63.0	1049	1053	1012	988.0	943.6	924.0	902.4	907.0	908.4	933.2
66.0	931.0	932.5	896.5	870.3	831.4	808.7	786.5	790.7	792.0	814.1
69.0	809.0	810.1	775.5	751.3	714.0	692.5	670.9	674.2	674.2	694.0
72.0	683.9	686.3	653.6	631.8	597.2	576.8	555.5	558.3	556.1	574.1
75.0	558.5	561.6	532.6	513.6	481.2	463.2	442.4	444.2	440.8	456.0
78.0	434.5	439.4	413.0	397.5	368.8	351.9	332.2	332.9	328.7	341.4
81.0	312.2	318.5	296.2	285.9	258.6	243.2	222.9	224.1	218.6	229.9
84.0	195.0	203.2	184.7	174.5	150.9	137.1	121.7	121.2	114.1	120.7
87.0	88.89	94.02	81.42	70.97	57.44	50.80	33.46	40.01	23.89	36.76
90.0	15.36	20.66	11.70	1.309	3.736	0.1024	0.2994	0.1024	0.3228	0.1112
93.0	0.1277	0.1270	0.1337	0.1350	0.1370	0.1356	0.1387	0.1398	0.1453	0.1490
96.0	0.1664	0.1619	0.1651	0.1672	0.1691	0.1691	0.1696	0.1736	0.1800	0.1857
99.0	0.2082	0.1948	0.1927	0.1930	0.1964	0.1982	0.1991	0.2037	0.2130	0.2208
102.0	0.2414	0.2293	0.2163	0.2146	0.2222	0.2231	0.2252	0.2314	0.2454	0.2545
105.0	0.2733	0.2568	0.2361	0.2330	0.2446	0.2441	0.2448	0.2573	0.2763	0.2872
108.0	0.2970	0.2753	0.2534	0.2467	0.2538	0.2621	0.2687	0.2865	0.3071	0.3215
111.0	0.3424	0.3109	0.2790	0.2553	0.2658	0.2828	0.2984	0.3164	0.3467	0.3634
114.0	0.4072	0.3385	0.3170	0.2828	0.2800	0.3157	0.3371	0.3595	0.3917	0.4109
117.0	0.4802	0.3984	0.3607	0.3245	0.3193	0.3566	0.3814	0.4071	0.4464	0.4675
120.0	0.5521	0.4612	0.4249	0.3699	0.3696	0.4018	0.4243	0.4623	0.5108	0.5384
123.0	0.6251	0.5300	0.4834	0.4284	0.4257	0.4442	0.4805	0.5128	0.5687	0.6129
126.0	0.6831	0.6010	0.5298	0.4918	0.4853	0.4910	0.5311	0.5615	0.6291	0.6703
129.0	0.7357	0.6593	0.5977	0.5554	0.5508	0.5516	0.5810	0.6144	0.6786	0.7108
132.0	0.7960	0.7238	0.6481	0.5997	0.6090	0.6143	0.6406	0.6651	0.7242	0.7398
135.0	0.8353	0.7615	0.7043	0.6524	0.6545	0.6641	0.6824	0.7063	0.7588	0.7799
138.0	0.8565	0.7977	0.7598	0.6974	0.6837	0.7025	0.7193	0.7305	0.7836	0.8023
141.0	0.8789	0.8441	0.7945	0.7255	0.7006	0.7333	0.7460	0.7505	0.8042	0.8299
144.0	0.9036	0.8745	0.8147	0.7467	0.7098	0.7412	0.7432	0.7596	0.8203	0.8500
147.0	0.9250	0.9017	0.8271	0.7620	0.7020	0.7292	0.7353	0.7478	0.8275	0.8631
150.0	0.9402	0.9311	0.8478	0.7802	0.7080	0.7367	0.7282	0.7521	0.8396	0.8756
153.0	0.9738	0.9756	0.9085	0.8109	0.7425	0.7768	0.7438	0.7894	0.8731	0.9037
156.0	1.006	1.029	0.9698	0.8310	0.7715	0.8152	0.7482	0.8133	0.8959	0.9330
159.0	1.082	1.103	1.016	0.8777	0.7739	0.8077	0.7508	0.8337	0.9303	0.9815
162.0	1.132	1.145	1.061	0.9246	0.7992	0.8116	0.7559	0.8599	0.9784	1.029
165.0	1.205	1.222	1.154	1.016	0.8644	0.8689	0.8189	0.9189	1.043	1.111
168.0	1.295	1.307	1.261	1.139	0.9917	0.9523	0.9139	1.003	1.119	1.193
171.0	1.291	1.320	1.274	1.184	1.017	1.036	1.003	1.038	1.150	1.197
174.0	1.360	1.392	1.355	1.299	1.151	1.159	1.090	1.114	1.214	1.226
177.0	1.381	1.419	1.384	1.348	1.225	1.231	1.122	1.123	1.213	1.209
180.0	1.372	1.408	1.375	1.350	1.311	1.263	1.217	1.175	1.178	1.214
G/C	150.0	165.0	180.0	195.0	210.0	225.0	240.0	255.0	270.0	285.0
0.0	2263	2263	2263	2263	2263	2263	2263	2263	2263	2263
3.0	2258	2258	2260	2260	2261	2260	2262	2262	2262	2262
6.0	2247	2249	2251	2250	2251	2251	2252	2253	2254	2254
9.0	2231	2234	2235	2235	2237	2236	2238	2238	2240	2240
12.0	2209	2213	2216	2216	2217	2216	2217	2217	2219	2220
15.0	2181	2185	2190	2189	2190	2188	2189	2189	2191	2193
18.0	2147	2153	2159	2157	2159	2155	2155	2154	2158	2159
21.0	2108	2116	2123	2121	2121	2116	2116	2114	2118	2120
24.0	2064	2073	2081	2078	2078	2072	2070	2068	2072	2075
27.0	2013	2025	2033	2029	2030	2021	2020	2016	2021	2023
30.0	1956	1976	1986	1975	1980	1964	1970	1957	1971	1965

C Range: 0 - 360DEG  
 C Interval: 15.0DEG  
 Test Speed: HIGH  
 Temperature: 25.3DEG  
 Operators: Alan Wang  
 Test Date: 25 March 2020

γ Range: 0 - 180DEG  
 γ Interval: 1.0DEG  
 Test System: EVERFINE GO-R5000\_V2 SYSTEM V2.0.362  
 Humidity: 54.0%  
 Test Distance: 2.500m [K=0.9942]  
 Remarks:

Photometric Data Table [cd]

33.0	1894	1918	1929	1915	1922	1900	1906	1891	1906	1901
36.0	1824	1851	1863	1847	1855	1831	1835	1819	1834	1829
39.0	1750	1777	1790	1773	1781	1756	1758	1742	1756	1754
42.0	1668	1696	1710	1695	1700	1674	1675	1659	1672	1671
45.0	1581	1610	1625	1609	1614	1587	1587	1570	1584	1583
48.0	1487	1518	1534	1517	1521	1493	1493	1475	1490	1489
51.0	1389	1419	1436	1419	1423	1395	1393	1376	1390	1391
54.0	1284	1314	1332	1316	1319	1292	1289	1273	1286	1287
57.0	1175	1204	1223	1207	1211	1184	1180	1164	1178	1179
60.0	1061	1090	1109	1093	1098	1071	1068	1054	1066	1068
63.0	945.4	971.5	991.1	973.0	980.1	956.5	952.5	939.3	951.5	954.5
66.0	827.1	850.0	869.4	858.1	860.1	840.4	834.7	825.8	834.5	839.7
69.0	705.3	726.5	745.5	734.4	738.2	720.2	715.9	708.1	716.3	721.9
72.0	582.4	602.6	620.7	610.8	615.6	600.0	598.1	590.4	599.9	604.0
75.0	461.4	478.9	496.1	487.1	494.8	480.9	480.8	474.6	484.2	487.2
78.0	343.1	357.4	372.6	364.8	375.4	365.0	366.3	361.0	369.3	372.1
81.0	229.6	241.0	254.7	247.2	260.3	252.9	253.8	247.2	256.7	258.1
84.0	121.0	129.3	140.9	136.6	149.1	140.7	144.6	141.8	149.8	151.8
87.0	22.06	40.90	47.64	40.21	52.38	46.82	54.22	51.87	56.45	59.08
90.0	0.2543	0.1155	0.4073	0.4123	0.3969	5.999	0.3690	2.967	0.4629	4.115
93.0	0.1544	0.1524	0.4803	0.4820	0.4682	0.4610	0.4400	0.4297	0.4181	0.4181
96.0	0.1927	0.1919	0.5522	0.5457	0.5329	0.5261	0.5067	0.4972	0.4853	0.4883
99.0	0.2259	0.2301	0.6127	0.6010	0.5865	0.5784	0.5659	0.5567	0.5477	0.5470
102.0	0.2606	0.2640	0.6568	0.6420	0.6236	0.6207	0.6111	0.6022	0.5997	0.5956
105.0	0.2948	0.3000	0.6811	0.6583	0.6479	0.6482	0.6463	0.6369	0.6409	0.6323
108.0	0.3379	0.3404	0.6655	0.6437	0.6386	0.6440	0.6416	0.6412	0.6486	0.6405
111.0	0.3823	0.3834	0.6463	0.6199	0.6175	0.6222	0.6199	0.6254	0.6336	0.6302
114.0	0.4355	0.4372	0.6409	0.6095	0.6041	0.6018	0.6001	0.6059	0.6143	0.6150
117.0	0.5040	0.5062	0.6647	0.6299	0.6165	0.5975	0.5881	0.5981	0.6088	0.6079
120.0	0.5751	0.5740	0.7392	0.7013	0.6726	0.6395	0.6070	0.6048	0.6162	0.6062
123.0	0.6333	0.6421	0.8190	0.7916	0.7524	0.7260	0.6676	0.6518	0.6521	0.6479
126.0	0.6884	0.6980	0.8820	0.8663	0.8334	0.8253	0.7611	0.7460	0.7522	0.7282
129.0	0.7246	0.7483	0.9251	0.9215	0.9038	0.9219	0.8750	0.8503	0.8584	0.8125
132.0	0.7631	0.7924	0.9625	0.9640	0.9637	0.9935	0.9686	0.9710	0.9653	0.9175
135.0	0.7992	0.8305	0.9976	0.9970	1.006	1.041	1.049	1.052	1.034	0.9787
138.0	0.8259	0.8586	1.017	1.017	1.032	1.074	1.089	1.108	1.076	1.017
141.0	0.8502	0.8815	1.046	1.050	1.056	1.100	1.109	1.136	1.125	1.050
144.0	0.8614	0.8993	1.088	1.093	1.092	1.138	1.141	1.164	1.158	1.100
147.0	0.8699	0.9188	1.132	1.140	1.125	1.186	1.171	1.195	1.195	1.157
150.0	0.8761	0.9280	1.178	1.182	1.150	1.224	1.202	1.227	1.196	1.182
153.0	0.9271	0.9506	1.206	1.231	1.230	1.260	1.239	1.263	1.225	1.213
156.0	0.9798	1.008	1.257	1.318	1.305	1.310	1.284	1.276	1.236	1.223
159.0	1.018	1.071	1.346	1.388	1.359	1.373	1.330	1.296	1.245	1.225
162.0	1.071	1.110	1.357	1.407	1.400	1.422	1.356	1.306	1.238	1.198
165.0	1.169	1.191	1.377	1.454	1.468	1.483	1.416	1.356	1.248	1.213
168.0	1.243	1.267	1.402	1.484	1.517	1.526	1.453	1.380	1.271	1.216
171.0	1.220	1.244	1.408	1.482	1.508	1.527	1.457	1.346	1.299	1.259
174.0	1.256	1.296	1.413	1.468	1.473	1.475	1.428	1.324	1.308	1.291
177.0	1.246	1.297	1.394	1.433	1.421	1.406	1.398	1.285	1.273	1.245
180.0	1.234	1.288	1.371	1.409	1.374	1.351	1.313	1.263	1.219	1.176
G/C	300.0	315.0	330.0	345.0						
0.0	2263	2263	2263	2263						
3.0	2263	2263	2263	2264						
6.0	2257	2257	2258	2258						
9.0	2244	2245	2247	2247						
12.0	2225	2227	2230	2231						
15.0	2200	2203	2208	2209						
18.0	2168	2173	2179	2181						
21.0	2130	2136	2145	2147						
24.0	2087	2095	2106	2109						
27.0	2037	2047	2061	2065						
30.0	1988	1993	2011	2016						
33.0	1928	1934	1962	1959						
36.0	1860	1867	1898	1897						
39.0	1785	1794	1827	1827						
42.0	1704	1716	1751	1752						
45.0	1617	1631	1668	1670						
48.0	1525	1540	1578	1583						
51.0	1427	1444	1483	1488						
54.0	1323	1342	1380	1388						
57.0	1216	1235	1274	1282						
60.0	1104	1123	1162	1170						
63.0	988.1	1008	1046	1054						
66.0	870.2	892.0	925.9	944.5						

C Range: 0 - 360DEG  
 C Interval: 15.0DEG  
 Test Speed: HIGH  
 Temperature: 25.3DEG  
 Operators: Alan Wang  
 Test Date: 25 March 2020

γ Range: 0 - 180DEG  
 γ Interval: 1.0DEG  
 Test System: EVERFINE GO-R5000\_V2 SYSTEM V2.0.362  
 Humidity: 54.0%  
 Test Distance: 2.500m [K=0.9942]  
 Remarks:



## Photometric Data Table [cd]

69.0	750.2	771.1	803.1	814.4
72.0	630.6	649.6	679.4	689.2
75.0	512.0	528.4	556.2	564.5
78.0	395.5	409.0	434.5	440.1
81.0	281.4	294.7	315.7	318.5
84.0	169.4	180.3	201.4	202.4
87.0	69.70	77.30	91.20	93.27
90.0	0.9906	10.23	23.07	37.59
93.0	0.4118	0.4206	0.4183	0.4264
96.0	0.4814	0.4889	0.4858	0.4935
99.0	0.5447	0.5496	0.5496	0.5563
102.0	0.5955	0.5981	0.6013	0.6016
105.0	0.6382	0.6368	0.6352	0.6313
108.0	0.6390	0.6408	0.6273	0.6250
111.0	0.6256	0.6250	0.6125	0.6003
114.0	0.6089	0.6032	0.5950	0.5939
117.0	0.5952	0.5947	0.6019	0.6096
120.0	0.6071	0.6220	0.6382	0.6619
123.0	0.6423	0.6720	0.6859	0.7340
126.0	0.7062	0.7425	0.7478	0.7900
129.0	0.7980	0.8033	0.8026	0.8294
132.0	0.8747	0.8525	0.8493	0.8701
135.0	0.9408	0.8942	0.8910	0.9091
138.0	0.9918	0.9485	0.9282	0.9368
141.0	1.043	1.005	0.9774	0.9849
144.0	1.096	1.065	1.027	1.040
147.0	1.131	1.096	1.070	1.092
150.0	1.154	1.137	1.112	1.142
153.0	1.185	1.172	1.177	1.176
156.0	1.190	1.191	1.245	1.216
159.0	1.178	1.233	1.284	1.297
162.0	1.189	1.255	1.285	1.310
165.0	1.216	1.273	1.307	1.314
168.0	1.216	1.296	1.330	1.325
171.0	1.215	1.303	1.331	1.337
174.0	1.190	1.316	1.317	1.328
177.0	1.181	1.287	1.278	1.316
180.0	1.176	1.215	1.234	1.289

C Range: 0 - 360DEG  
 C Interval: 15.0DEG  
 Test Speed: HIGH  
 Temperature: 25.3DEG  
 Operators: Alan Wang  
 Test Date: 25 March 2020

γ Range: 0 - 180DEG  
 γ Interval: 1.0DEG  
 Test System: EVERFINE GO-R5000\_V2 SYSTEM V2.0.362  
 Humidity: 54.0%  
 Test Distance: 2.500m [K=0.9942]  
 Remarks: