



# LED OUTDOOR WALL SCNCE

► **DESIGN** - LED OUTDOOR WALL SCNCE has a modern, multipurpose design and a stylish look with efficient lighting. Durable housing resistant to rust and impact provides many years of service. The UV resistant PMMA lens with a 120° beam angle grants you even light distribution. It is designed to operate on 120V or 120-277V circuits.

► **PHOTOCELL** - The built-in Dusk to Dawn Photocell will automatically turn the fixture on/off depending on the time of day.

► **COLOR SELECTABLE** - You can choose either a 3,000K warm white, 4,000K cool white or 5,000K daylight color temperature.

► **APPLICATION** - The fixture is rated for Wet Locations, making it perfect for indoor and outdoor projects such as decks, front doors, porches, patios, corridors, walkways, or any other common areas.

► **ADVANTAGES** - With a lifespan of 50,000 hours, these fixtures are made to last decades under normal operation! ASD provides a 5-year limited warranty along with ETL certification to guarantee top quality products and safety!

Catalog number	
Notes	
Type	



Finish:  Nickel  Bronze

Model	Size	Watts	Voltage	Dimmable	Lumens	CCT	Finish	Dimensions (LxWxH)	Option
ASD-OLWS-21-D15CC-NK	10 inch	15W	120 V	TRIAC	1,067 lm	3CCT (3,000/4,000/5,000 K)	Nickel	7" x 3-1/4" x 9-15/16"	-
ASD-OLWS-21-10D15CC-NK-2PACK	10 inch	15W	120 V	TRIAC	1,067 lm	3CCT (3,000/4,000/5,000 K)	Nickel	7" x 3-1/4" x 9-15/16"	-
ASD-OLWS-21-D15CC-BZ	10 inch	15W	120 V	TRIAC	1,067 lm	3CCT (3,000/4,000/5,000 K)	Oil rubbed bronze	7" x 3-1/4" x 9-15/16"	-
ASD-OLWS-21-10D15CC-BZ-2PACK	10 inch	15W	120 V	TRIAC	1,067 lm	3CCT (3,000/4,000/5,000 K)	Oil rubbed bronze	7" x 3-1/4" x 9-15/16"	-
ASD-OLWS-21-MV-18D20CC-NK	18 inch	20W	120-277 V	TRIAC	2,359 lm	3CCT (3,000/4,000/5,000 K)	Nickel	7" x 3-1/4" x 17-15/16"	-
ASD-OLWS-21-MV-18D20CC-BZ	18 inch	20W	120-277 V	TRIAC	2,359 lm	3CCT (3,000/4,000/5,000 K)	Oil rubbed bronze	7" x 3-1/4" x 17-15/16"	-
ASD-OLWS-21-MV-24D25CC-NK	24 inch	25W	120-277 V	TRIAC	2,905 lm	3CCT (3,000/4,000/5,000 K)	Nickel	7" x 3-1/4" x 23-13/16"	-
ASD-OLWS-21-MV-24D25CC-BZ	24 inch	25W	120-277 V	TRIAC	2,905 lm	3CCT (3,000/4,000/5,000 K)	Oil rubbed bronze	7" x 3-1/4" x 23-13/16"	-
<b>OLWS-21-PC WITH PHOTOCELL</b>									
ASD-OLWS-21-N15CC-PC-NK	10 inch	15W	120 V	-	1,067 lm	3CCT (3,000/4,000/5,000 K)	Nickel	7" x 3-1/4" x 10-7/16"	Photocell
ASD-OLWS-21-10N15CC-PC-NK-2PACK	10 inch	15W	120 V	-	1,067 lm	3CCT (3,000/4,000/5,000 K)	Nickel	7" x 3-1/4" x 10-7/16"	Photocell
ASD-OLWS-21-N15CC-PC-BZ	10 inch	15W	120 V	-	1,067 lm	3CCT (3,000/4,000/5,000 K)	Oil rubbed bronze	7" x 3-1/4" x 10-7/16"	Photocell
ASD-OLWS-21-10N15CC-PC-BZ-2PACK	10 inch	15W	120 V	-	1,067 lm	3CCT (3,000/4,000/5,000 K)	Oil rubbed bronze	7" x 3-1/4" x 10-7/16"	Photocell

## ORDERING INFORMATION

Model	UPC	Pcs. per carton	Carton size	Carton weight	GTIN 14
ASD-OLWS-21-D15CC-NK	810050731379	4	12.4" x 18.9" x 10"	11.9 lbs	30810050731370
ASD-OLWS-21-10D15CC-NK-2PACK	810128112383	2	18.9" x 9.7" x 12.4"	11.3 lbs	10810128112380
ASD-OLWS-21-D15CC-BZ	810050731386	4	12.4" x 18.9" x 10"	11.9 lbs	30810050731387
ASD-OLWS-21-10D15CC-BZ-2PACK	810128112390	2	18.9" x 9.7" x 12.4"	11.3 lbs	10810128112397
ASD-OLWS-21-MV-18D20CC-NK	810128112789	2	20.3" x 9.7" x 10.4"	10.4 lbs	10810128112786
ASD-OLWS-21-MV-18D20CC-BZ	810128112772	2	20.3" x 9.7" x 10.4"	10.4 lbs	10810128112779
ASD-OLWS-21-MV-24D25CC-NK	810128112802	2	26.2" x 9.7" x 10.4"	12.4 lbs	10810128112809
ASD-OLWS-21-MV-24D25CC-BZ	810128112796	2	26.2" x 9.7" x 10.4"	12.4 lbs	10810128112793
<b>OLWS-21-PC WITH PHOTOCELL</b>					
ASD-OLWS-21-N15CC-PC-NK	810050737760	4	12.4" x 18.9" x 10"	11.9 lbs	10810050737767
ASD-OLWS-21-10N15CC-PC-NK-2PACK	810128113502	2	12.4" x 18.9" x 9.7"	11.3 lbs	10810128113509
ASD-OLWS-21-N15CC-PC-BZ	810050737753	4	12.4" x 18.9" x 10"	11.9 lbs	10810050737750
ASD-OLWS-21-10N15CC-PC-BZ-2PACK	810128111195	2	12.4" x 18.9" x 9.7"	11.3 lbs	10810128111192

For most up-to-date spec sheets please refer to [asd-lighting.com](http://asd-lighting.com)

ASD LIGHTING CORP

E-mail: [orders@asd-lighting.com](mailto:orders@asd-lighting.com) | Web site: [www.asd-lighting.com](http://www.asd-lighting.com)





# LED OUTDOOR WALL SCONCE

## PRODUCT SPECIFICATIONS:

Construction & Materials				
Housing	Aluminum	for MV models: Steel		
Lens	PMMA			
Finish	Nickel, Oil rubbed bronze			
Weight	ASD-OLWS-21-D15CC-NK	1.8 lbs (0.8 kg)	ASD-OLWS-21-MV-24D25CC-NK	4.5 lbs (2 kg)
	ASD-OLWS-21-10D15CC-NK-2PACK	4.4 lbs (2 kg)	ASD-OLWS-21-MV-24D25CC-BZ	
	ASD-OLWS-21-D15CC-BZ	1.8 lbs (0.8 kg)	ASD-OLWS-21-N15CC-PC-NK	2.2 lbs (1 kg)
	ASD-OLWS-21-10D15CC-BZ-2PACK	4.4 lbs (2 kg)	ASD-OLWS-21-10N15CC-PC-NK-2PACK	4.4 lbs (2 kg)
	ASD-OLWS-21-MV-18D20CC-NK	3.7 lbs (1.7 kg)	ASD-OLWS-21-N15CC-PC-BZ	2.2 lbs (1 kg)
	ASD-OLWS-21-MV-18D20CC-BZ		ASD-OLWS-21-10N15CC-PC-BZ-2PACK	4.4 lbs (2 kg)
Environmental system				
Work environment	Suitable for Wet Locations			
Operating temperature	-40°F to 113°F (-40°C to 45°C)	for PC models: -4°F to 113°F (-20°C to 45°C)		
L-70 Life	> 50,000 hrs			
Optical system				
Luminous flux	ASD-OLWS-21-D15CC-NK	1,067 lm	ASD-OLWS-21-MV-24D25CC-NK	2,905 lm
	ASD-OLWS-21-10D15CC-NK-2PACK		ASD-OLWS-21-MV-24D25CC-BZ	
	ASD-OLWS-21-D15CC-BZ		ASD-OLWS-21-N15CC-PC-NK	
	ASD-OLWS-21-10D15CC-BZ-2PACK	2,359 lm	ASD-OLWS-21-10N15CC-PC-NK-2PACK	1,067 lm
	ASD-OLWS-21-MV-18D20CC-NK		ASD-OLWS-21-N15CC-PC-BZ	
	ASD-OLWS-21-MV-18D20CC-BZ		ASD-OLWS-21-10N15CC-PC-BZ-2PACK	
Color temperature	3CCT switch (3,000/4,000/5,000 K), 3,000 K by default			
CRI	> 80			
Electrical system				
Input voltage	120 V for MV models: 120-277 V			
Max input current	ASD-OLWS-21-D15CC-NK	0.19 A	ASD-OLWS-21-MV-24D25CC-NK	0.23 A
	ASD-OLWS-21-10D15CC-NK-2PACK		ASD-OLWS-21-MV-24D25CC-BZ	
	ASD-OLWS-21-D15CC-BZ		ASD-OLWS-21-N15CC-PC-NK	
	ASD-OLWS-21-10D15CC-BZ-2PACK	0.18 A	ASD-OLWS-21-10N15CC-PC-NK-2PACK	0.19 A
	ASD-OLWS-21-MV-18D20CC-NK		ASD-OLWS-21-N15CC-PC-BZ	
	ASD-OLWS-21-MV-18D20CC-BZ		ASD-OLWS-21-10N15CC-PC-BZ-2PACK	
Inrush current (Action time)	ASD-OLWS-21-D15CC-NK	0.12 A (0.1 S)	ASD-OLWS-21-MV-24D25CC-NK	0.21 A (0.1 S)
	ASD-OLWS-21-10D15CC-NK-2PACK		ASD-OLWS-21-MV-24D25CC-BZ	
	ASD-OLWS-21-D15CC-BZ		ASD-OLWS-21-N15CC-PC-NK	
	ASD-OLWS-21-10D15CC-BZ-2PACK	0.17 A (0.1 S)	ASD-OLWS-21-10N15CC-PC-NK-2PACK	0.12 A (0.1 S)
	ASD-OLWS-21-MV-18D20CC-NK		ASD-OLWS-21-N15CC-PC-BZ	
	ASD-OLWS-21-MV-18D20CC-BZ		ASD-OLWS-21-10N15CC-PC-BZ-2PACK	
Off state power	0W			
Power consumption	ASD-OLWS-21-D15CC-NK	15W	ASD-OLWS-21-MV-24D25CC-NK	25W
	ASD-OLWS-21-10D15CC-NK-2PACK		ASD-OLWS-21-MV-24D25CC-BZ	
	ASD-OLWS-21-D15CC-BZ		ASD-OLWS-21-N15CC-PC-NK	
	ASD-OLWS-21-10D15CC-BZ-2PACK	20W	ASD-OLWS-21-10N15CC-PC-NK-2PACK	15W
	ASD-OLWS-21-MV-18D20CC-NK		ASD-OLWS-21-N15CC-PC-BZ	
	ASD-OLWS-21-MV-18D20CC-BZ		ASD-OLWS-21-10N15CC-PC-BZ-2PACK	
Power factor	> 0.9			
Output voltage	-	for MV models: 18-40 V		
Max output current	-	for MV 18 inch models: 0.52 A		for MV 24 inch models: 0.6 A
Surge protection DM/CM	1.25 kV / 1.25 kV			
Dimming compatible controls			Dimming range	
Brand	Lutron	Leviton	10-100%	
Models	MACL-153MLH-WH	R02-DW6HD-2RW	<b>Regular and voluntary certifications</b> 5-year limited warranty Energy Star listed (except MV and PC models) cETLus certified 4001256	
	STCL-153PH-WH	R00-RNL06-0TW		
	PD-6WCL-WH-R	R68-06674-P0T		
	DVCL-153PR	DSL06		
	P-PKG1W			

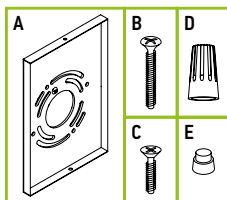
For most up-to-date spec sheets please refer to [asd-lighting.com](http://asd-lighting.com)



# LED OUTDOOR WALL SCENCE

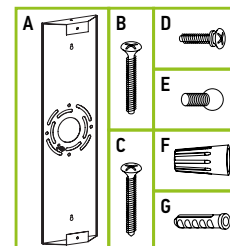
## PACKAGE CONTENTS FOR 10" MODELS:

Description	Q-ty
LED Outdoor Wall Sconce	1 (2 for 2pack)
Mounting plate (A)	1
Mounting screw (B)	2
Fixture screw (C)	2
Wire nut (D)	3
Photocell cap (E) only for PC models	1
Box	1



## PACKAGE CONTENTS FOR 18-24" MODELS:

Description	Q-ty
LED Outdoor Wall Sconce	1
Mounting plate (A)	1
Mounting screw (B)	2
Self-tapping screw (C)	2 for 18", 4 for 24"
Fixture screw (D)	2
Decorative screw (E)	2
Wire nut (F)	3
Anchor (G)	2 for 18", 4 for 24"
Box	1



## BUILT-IN PHOTOCELL INFORMATION

The dusk-to-dawn sensor automatically turns the fixture off during daylight hours.

Specifications	Model: MD-EP-120R
Input power	120 Vac, 60 Hz
Light level to turn ON	30 - 150 lux (2.8 - 14 fc)
Light level to turn OFF	200 - 800 lux (18.6-74.4 fc)
Operating temperature	-4°F to 122°F (-20°C to 50°C)

## INSTALLATION GUIDE

### IMPORTANT SAFETY INFORMATION:

Please read all the instructions below before installation.

- ▶ Make sure that the supply voltage corresponds to the rated product voltage.
- ▶ The product must be installed by a qualified electrician in accordance with the National Electrical Code and corresponding local codes.
- ▶ If the product is damaged, do not use it.

### ⚠ WARNING

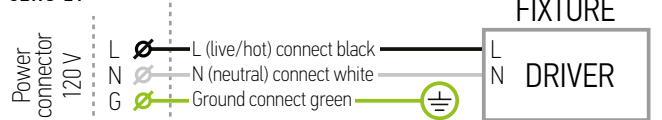
**RISK OF PERSONAL INJURY – READ and follow all WARNINGS and installation instructions.** Keep or give to the owner for future reference.  
**Risk of cuts:** Wear gloves to prevent cuts or abrasions when removing from carton, handling, installing, and maintaining this product.

**Risk of electric shock:** This product must be installed in accordance with the applicable installation code by a person familiar with the construction and operation of the product and the hazards involved.

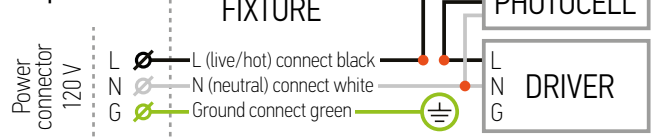
**Risk of Fire:** Minimum 194°F supply conductors. Consult a qualified electrician to ensure correct branch circuit conductor.  
 ASD® assumes no responsibility for claims arising out of improper or careless installation or handling of this product.

### ELECTRICAL SCHEMATIC DIAGRAM:

OLWS-21

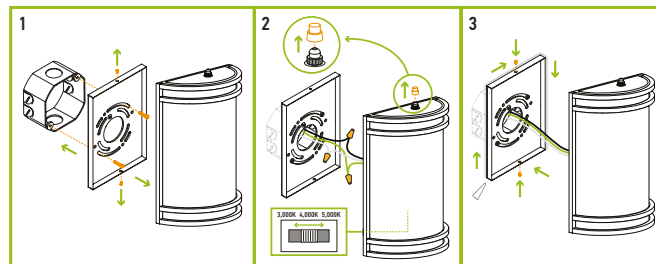


OLWS-21-PC with photocell



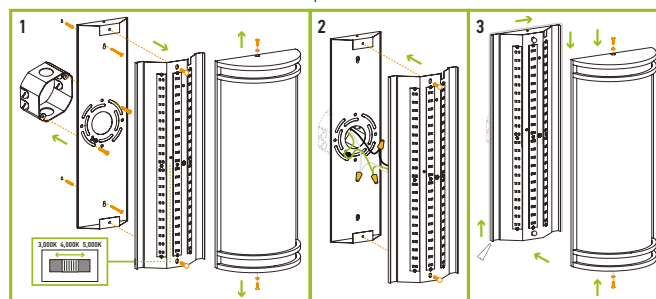
## INSTALLATION STEPS FOR MODELS 10":

1. Unscrew the two fixture screws from the top and the bottom of the wall sconce. Remove the wall plate and attach it to the outlet box using two mounting screws.
2. Choose preferred color temperature by adjusting the switch position inside the fixture. Connect the wires: Black to Black, White to White, Ground to Ground. Secure the connection with wire nuts. Remove the photocell cap to make the dusk-to-dawn sensor operate.
3. Attach the fixture firmly to the wall plate and secure it with two fixture screws on the top and the bottom. For outdoor locations please use silicone (not included) as shown on a picture.



## INSTALLATION STEPS FOR MODELS 18-24":

1. Unscrew the two fixture screws from the top and the bottom of the wall sconce. Remove the cover and bottom perforated plate, then unscrew two screws from the LED panel, and detach it from the wall plate. Attach wall plate to the outlet box using two mounting screws and fit it on a wall with two or four additional screws (depending on model). Choose preferred color temperature by adjusting the switch position inside the fixture.
2. Connect the wires: Black to Black, White to White, Ground to Ground. Secure the connection with wire nuts. Attach the LED panel to the wall plate and secure it with two screws on the top and on the bottom.
3. Attach the cover and bottom perforated plate to the wall plate, and secure it with two screws on the top and on the bottom. For outdoor locations, please use silicone (not included) as shown on a picture.



For most up-to-date spec sheets please refer to [asd-lighting.com](http://asd-lighting.com)