



LED WALL SCONCE

► **DESIGN** - LED WALL SCONCE has a modern, multipurpose design and a stylish look with efficient lighting. Durable housing resistant to rust and impact provides many years of use. The acrylic lens with a 215° beam angle grants you even light distribution. It is designed to operate on 120V circuits.

► **COLOR SELECTABLE** - You can choose either a 2,700K soft white, 3,000K warm white, 3,500K neutral white, 4,000K cool white, or 5,000K daylight color temperature.

► **DIMMING** - Smooth triac dimming capabilities ranging from 10% to 100% with modern LED dimmers allow you to control the look and feel of your space.

► **APPLICATION** - The LED WALL SCONCE provides bright, yet smooth lighting for your family room, bedroom, hallway, corridor, or any other common area in your living space. This fixture is also Damp Locations rated.

► **ADVANTAGES** - With a lifespan of 54,000 hours, these fixtures are made to last decades under normal operation! ASD provides a 5-year limited warranty along with UL certification to guarantee top quality products and safety!

<i>Catalog number</i>	
<i>Notes</i>	
<i>Type</i>	



Finish: Nickel Black

Model	Size	Watts	Voltage	Dimmable	Lumens	CCT	Finish	Dimensions (LxWxH)
ASD-LWS12-12D12AC-NK	12 inch	12W	120 V	TRIAC	up to 861 lm	5CCT (2,700/3,000/3,500/4,000/5,000 K)	Brushed nickel	4-3/4" x 1-3/4" x 11-7/16"
ASD-LWS12-12D12AC-BK	12 inch	12W	120 V	TRIAC	up to 861 lm	5CCT (2,700/3,000/3,500/4,000/5,000 K)	Black	4-3/4" x 1-3/4" x 11-7/16"

For detailed luminous flux information please refer to Annex 1.

ORDERING INFORMATION

Model	UPC	Pcs. per carton	Carton size	Carton weight	GTIN 14
ASD-LWS12-12D12AC-NK	810128115568	2	12.2" x 4.7" x 5.7"	3.8 lbs	10810128115565
ASD-LWS12-12D12AC-BK	810128115551	2	12.2" x 4.7" x 5.7"	3.8 lbs	10810128115558

ANNEX 1

Model	Watts	2,700 K	3,000 K	4,000 K	5,000 K	6,500 K
ASD-LWS12-12D12AC-NK ASD-LWS12-12D12AC-BK	12W	799 lm	834 lm	856 lm	861 lm	855 lm

For most up-to-date spec sheets please refer to asd-lighting.com



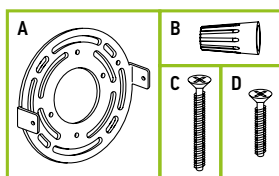
LED WALL SCONCE

PRODUCT SPECIFICATIONS:

Construction & Materials	
Housing	Aluminum
Lens	Acrylic
Finish	Brushed nickel, Black
Weight	1.4 lbs (0.6 kg)
Environmental system	
Work environment	Suitable for Damp Locations
Operating temperature	-4°F to 113°F (-20°C to 45°C)
L-70 Life	> 54,000 hrs
Optical system	
Color temperature	5 CCT switch (2,700/3,000/3,500/4,000/5,000 K), 3,000 K by default
CRI	> 80
Electrical system	
Input voltage	120 V
Max input current	0.12 A
Inrush current (Action time)	40 A (0.01 S)
Off state power	0W
Power consumption	12W
Power factor	> 0.9
Output voltage	36 V
Max output current	0.3 A
Surge protection DM/CM	2.5 kV / 2.5 kV
Dimming range	
10-100%	
Dimming compatible controls	
Brand	Lutron Leviton
Models	CTCL-153PDH-WH S-600PR-WH DB33K1 6674
	DVW-603PGH-WH CTCL-153P 1A2305 6672
	MIR-600THW-WH DV-600P 1F4205
	MACL-153M-WH NT-1000 6633-P
	CT-603PGH-WH S-603P VP106
	DVCL-153P-WH S-600P IPL06
	SLV-600P-WH 4X603 6683
Regular and voluntary certifications	
5-year limited warranty	
UL certified E473804	
FCC compliant	

PACKAGE CONTENTS:

Description	Q-ty
LED Wall Sconce	1
Mounting plate (A)	1
Wire nut (B)	3
Mounting screw (C)	2
Fixture screw (D)	2
Box	1



INSTALLATION GUIDE

IMPORTANT SAFETY INFORMATION:

Please read all the instructions below before installation.

- ▶ Make sure that the supply voltage corresponds to the rated product voltage.
- ▶ The product must be installed by a qualified electrician in accordance with the National Electrical Code and corresponding local codes.
- ▶ If the product is damaged, do not use it.

⚠ WARNING

RISK OF PERSONAL INJURY – READ and follow all WARNINGS and installation instructions. Keep or give to the owner for future reference.

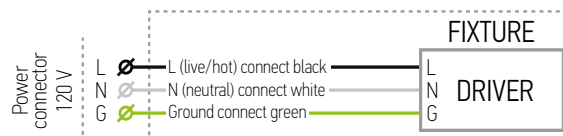
Risk of cuts: Wear gloves to prevent cuts or abrasions when removing from carton, handling, installing, and maintaining this product.

Risk of electric shock: This product must be installed in accordance with the applicable installation code by a person familiar with the construction and operation of the product and the hazards involved.

Risk of Fire: Minimum 194°F supply conductors. Consult a qualified electrician to ensure correct branch circuit conductor.

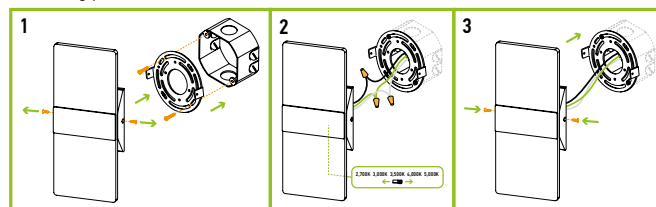
ASD® assumes no responsibility for claims arising out of improper or careless installation or handling of this product.

ELECTRICAL SCHEMATIC DIAGRAM:



INSTALLATION STEPS:

1. Unscrew the two fixture screws from both sides of the wall sconce. Remove the mounting plate and attach it to the existing outlet box using two mounting screws.
2. Choose preferred color temperature by adjusting switch position. Connect the wires: Black to Black, White to White, Green to Green. Secure the connection with wire nuts.
3. Fix the wall sconce to the mounting plate using two fixture screws on both sides. Before tightening the screws, align the holes of both the fixture and the mounting plate to ensure a solid fit.



For most up-to-date spec sheets please refer to asd-lighting.com