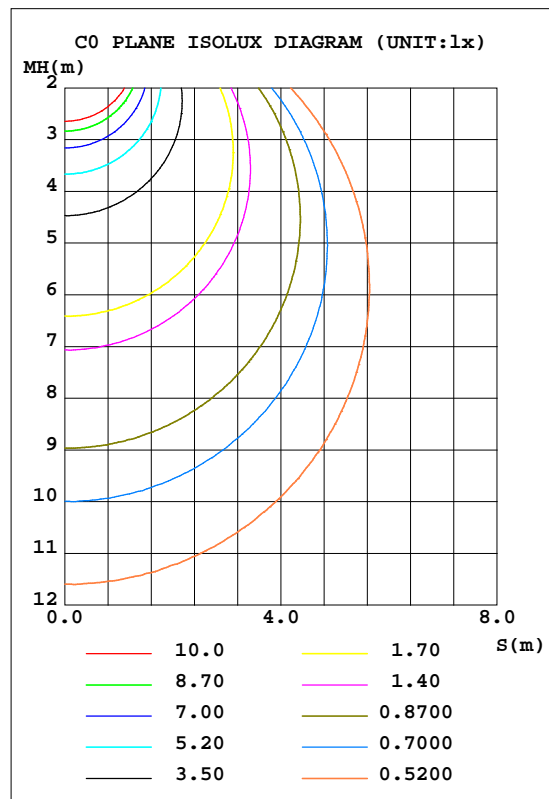
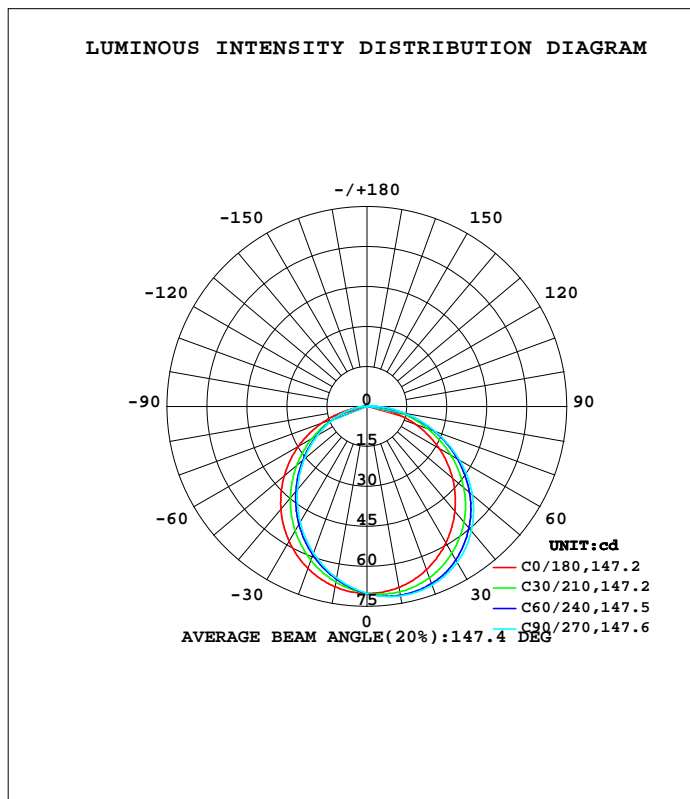


LUMINAIRE PHOTOMETRIC TEST REPORT

Test:U:120.07V I:0.0304A P:3.5684W PF:0.9791 Freq:59.98Hz Lamp Flux:202.49x1 lm		
NAME: ASD-UCB-9D3CC-WH-5000K	TYPE:0	WEIGHT:
SPEC.:3W	DIM.:	SERIAL No.:
MFR.: ASD Lighting Corp	SUR.:	Shielding Angle:

DATA OF LAMP		PHOTOMETRIC DATA Eff: 56.75 lm/W			
MODE:ASD-UCB-9D3CC-WH-5000K		I _{max} (cd)	72.28	S/MH(C0/180)	1.24
NOMINAL POWER(W)	3	LOR(%)	100.0	S/MH(C90/270)	1.09
RATED VOLTAGE(V)	120	TOTAL FLUX(lm)	202.49	h UP, DN(C0-180)	0.7,57.4
NOMINAL FLUX(lm)	202.49	CIE CLASS	DIRECT	h UP, DN(C180-360)	0.3,41.6
LAMPS INSIDE	1	h up(%)	1.0	CIBSE SHR NOM	1.25
TEST VOLTAGE(V)	120	h down(%)	99.0	CIBSE SHR MAX	1.35



C Range: 0 - 360DEG
 C Interval: 15.0DEG
 Test Speed: MEDIUM
 Temperature:25.3DEG
 Operators:
 Test Date:21 April 2021

g Range: 0 - 180DEG
 g Interval: 0.5DEG
 Test System:EVERFINE GO-SPEX500_V1 SYSTEM V2.0.402
 Humidity:65.0%
 Test Distance:3.010m [K=1.0000]
 Remarks:

ZONAL FLUX DIAGRAM

ZONAL FLUX DIAGRAM:

g	C0	C45	C90	C135	C180	C225	C270	C315	g	F zone	F total	%lum,lamp
10	68.85	71.37	72.20	71.22	68.70	66.23	65.40	66.42	0- 10	6.628	6.628	3.27,3.27
20	65.16	69.76	71.29	69.49	64.73	60.16	58.62	60.49	10- 20	18.96	25.59	12.6,12.6
30	59.24	65.50	67.61	65.07	58.42	52.18	50.11	52.70	20- 30	28.65	54.23	26.8,26.8
40	51.37	58.85	60.99	58.25	50.26	42.74	40.59	43.42	30- 40	34.42	88.65	43.8,43.8
50	41.96	49.44	51.66	49.36	40.52	32.44	30.74	33.16	40- 50	35.58	124.2	61.4,61.4
60	31.11	38.11	40.05	38.56	29.57	22.17	21.32	22.60	50- 60	32.07	156.3	77.2,77.2
70	19.19	25.90	27.05	26.01	17.82	12.79	12.91	12.91	60- 70	24.62	180.9	89.3,89.3
80	6.297	13.06	13.89	12.67	6.090	5.325	5.784	5.223	70- 80	14.64	195.6	96.6,96.6
90	0.1046	1.746	2.550	1.093	0.1556	0.4567	0.9415	0.5157	80- 90	4.904	200.5	99,99
100	0.1185	0.7204	0.8723	0.4887	0.1074	0.1245	0.1571	0.1639	90-100	0.6373	201.1	99.3,99.3
110	0.2537	0.4019	0.7022	0.2061	0.2063	0.1928	0.2086	0.2253	100-110	0.3447	201.4	99.5,99.5
120	0.3252	0.2223	0.2475	0.2288	0.2399	0.2162	0.2568	0.2588	110-120	0.2564	201.7	99.6,99.6
130	0.3148	0.3765	0.2883	0.2189	0.2261	0.2293	0.2873	0.2508	120-130	0.2343	201.9	99.7,99.7
140	0.2607	0.4026	0.4937	0.2433	0.2107	0.2300	0.2290	0.2294	130-140	0.2171	202.1	99.8,99.8
150	0.2171	0.2069	0.5413	0.1887	0.1951	0.2311	0.2310	0.2206	140-150	0.1767	202.3	99.9,99.9
160	0.1861	0.1748	0.1779	0.1474	0.1653	0.1478	0.1763	0.1758	150-160	0.0948	202.4	100,100
170	0.1513	0.2263	0.1922	0.1770	0.1420	0.1235	0.1491	0.1477	160-170	0.0541	202.5	100,100
180	0.1753	0.1794	0.1640	0.1650	0.1777	0.1769	0.1646	0.1678	170-180	0.0153	202.5	100,100
DEG	LUMINOUS INTENSITY:cd									UNIT:lm		

C Range: 0 - 360DEG
 C Interval: 15.0DEG
 Test Speed: MEDIUM
 Temperature:25.3DEG
 Operators:
 Test Date:21 April 2021

g Range: 0 - 180DEG
 g Interval: 0.5DEG
 Test System:EVERFINE GO-SPEX500_V1 SYSTEM V2.0.402
 Humidity:65.0%
 Test Distance:3.010m [K=1.0000]
 Remarks:

UGR(Unified Glare Rating) Table

Test:U:120.07V I:0.0304A P:3.5684W PF:0.9791 Freq:59.98Hz Lamp Flux:202.49x1 lm										
NAME: ASD-UCB-9D3CC-WH-5000K					TYPE:0			WEIGHT:		
SPEC.:3W					DIM.:			SERIAL No.:		
MFR.: ASD Lighting Corp					SUR.:			Shielding Angle:		
ceiling/cavity	0.7	0.7	0.5	0.5	0.3	0.7	0.7	0.5	0.5	0.3
walls	0.5	0.3	0.5	0.3	0.3	0.5	0.3	0.5	0.3	0.3
working plane	0.2	0.2	0.2	0.2	0.2	0.2	0.2	0.2	0.2	0.2
Room dimensions	Viewed crosswise					Viewed endwise				
x = 2H y = 2H	6.3	7.9	6.6	8.1	8.3	7.2	8.7	7.5	9.0	9.2
3H	7.8	9.2	8.2	9.5	9.7	9.0	10.4	9.4	10.7	10.9
4H	8.4	9.7	8.7	10.0	10.3	9.8	11.2	10.2	11.4	11.7
6H	8.7	10.0	9.1	10.3	10.6	10.5	11.7	10.8	12.0	12.3
8H	8.8	10.0	9.2	10.3	10.6	10.8	12.0	11.1	12.3	12.6
12H	8.8	10.0	9.2	10.3	10.6	11.1	12.2	11.4	12.5	12.9
4H 2H	7.2	8.5	7.5	8.8	9.1	7.8	9.2	8.2	9.4	9.7
3H	8.9	10.1	9.3	10.4	10.7	9.9	11.0	10.2	11.3	11.7
4H	9.6	10.7	10.0	11.0	11.4	10.8	11.9	11.2	12.2	12.6
6H	10.1	11.1	10.6	11.5	11.8	11.6	12.6	12.0	13.0	13.3
8H	10.3	11.2	10.7	11.5	11.9	12.0	12.9	12.4	13.3	13.7
12H	10.3	11.1	10.8	11.5	12.0	12.4	13.2	12.8	13.6	14.0
8H 4H	10.1	11.0	10.5	11.4	11.8	11.1	12.0	11.5	12.4	12.8
6H	10.8	11.6	11.3	12.0	12.4	12.1	12.9	12.6	13.3	13.7
8H	11.1	11.7	11.6	12.2	12.7	12.6	13.3	13.1	13.7	14.2
12H	11.2	11.8	11.7	12.3	12.8	13.2	13.7	13.7	14.2	14.7
12H 4H	10.2	11.0	10.6	11.4	11.8	11.1	11.9	11.6	12.3	12.8
6H	11.0	11.6	11.5	12.1	12.6	12.2	12.9	12.7	13.3	13.8
8H	11.3	11.9	11.8	12.3	12.8	12.8	13.3	13.3	13.8	14.3
Variations with the observer position at spacings:										
S = 1.0H	+ 0.2 / - 0.2					+ 0.1 / - 0.2				
1.5H	+ 0.2 / - 0.4					+ 0.2 / - 0.3				
2.0H	+ 0.2 / - 0.6					+ 0.1 / - 0.3				

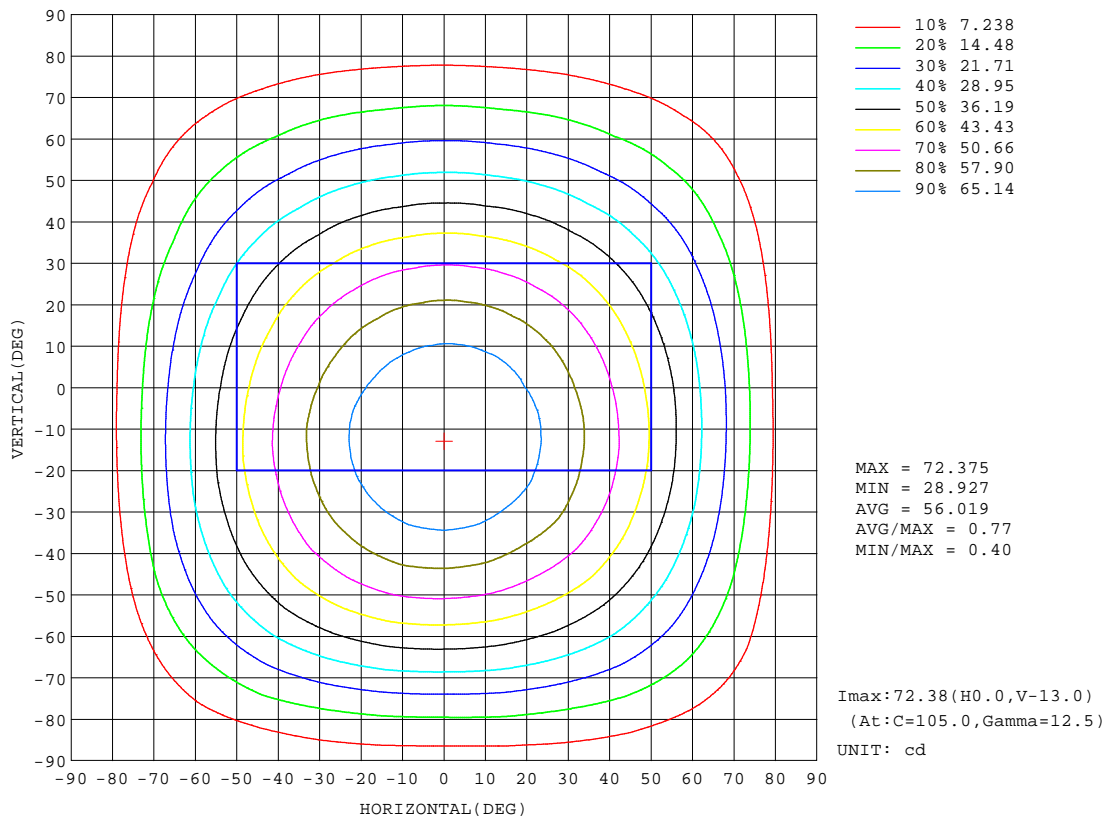
CIE Pub.117, 202.5 lm Total Lamp Luminous Flux Corrected (8log(F/F0) = -5.5)

C Range: 0 - 360DEG
 C Interval: 15.0DEG
 Test Speed: MEDIUM
 Temperature:25.3DEG
 Operators:
 Test Date:21 April 2021

g Range: 0 - 180DEG
 g Interval: 0.5DEG
 Test System:EVERFINE GO-SPEX500_V1 SYSTEM V2.0.402
 Humidity:65.0%
 Test Distance:3.010m [K=1.0000]
 Remarks:

ISOCANDELA DIAGRAM

Test:U:120.07V I:0.0304A P:3.5684W PF:0.9791 Freq:59.98Hz Lamp Flux:202.49x1 lm		
NAME: ASD-UCB-9D3CC-WH-5000K	TYPE:0	WEIGHT:
SPEC.:3W	DIM.:	SERIAL No.:
MFR.: ASD Lighting Corp	SUR.:	Shielding Angle:



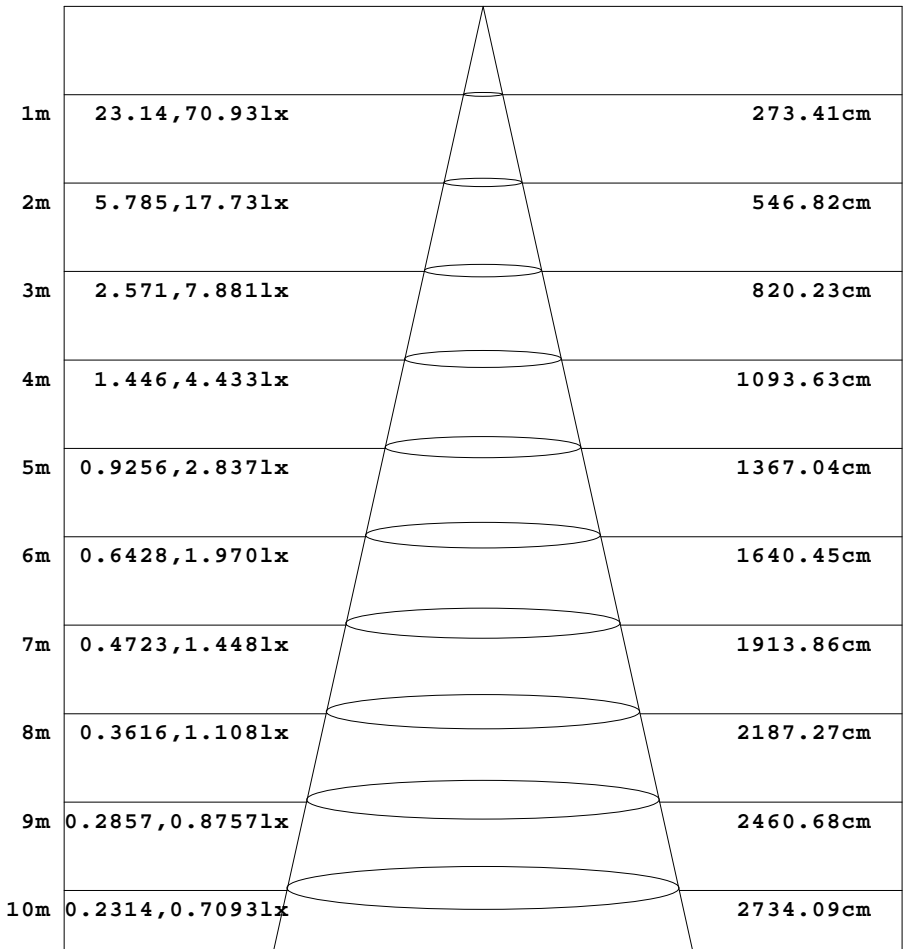
C Range: 0 - 360DEG
 C Interval: 15.0DEG
 Test Speed: MEDIUM
 Temperature:25.3DEG
 Operators:
 Test Date:21 April 2021

g Range: 0 - 180DEG
 g Interval: 0.5DEG
 Test System:EVERFINE GO-SPEX500_V1 SYSTEM V2.0.402
 Humidity:65.0%
 Test Distance:3.010m [K=1.0000]
 Remarks:

AAI Figure

Test:U:120.07V I:0.0304A P:3.5684W PF:0.9791 Freq:59.98Hz Lamp Flux:202.49x1 lm		
NAME: ASD-UCB-9D3CC-WH-5000K	TYPE:0	WEIGHT:
SPEC.:3W	DIM.:	SERIAL No.:
MFR.: ASD Lighting Corp	SUR.:	Shielding Angle:

Flux out:137.7 lm



Height Eavg, Emax Angle:107.63deg Diameter

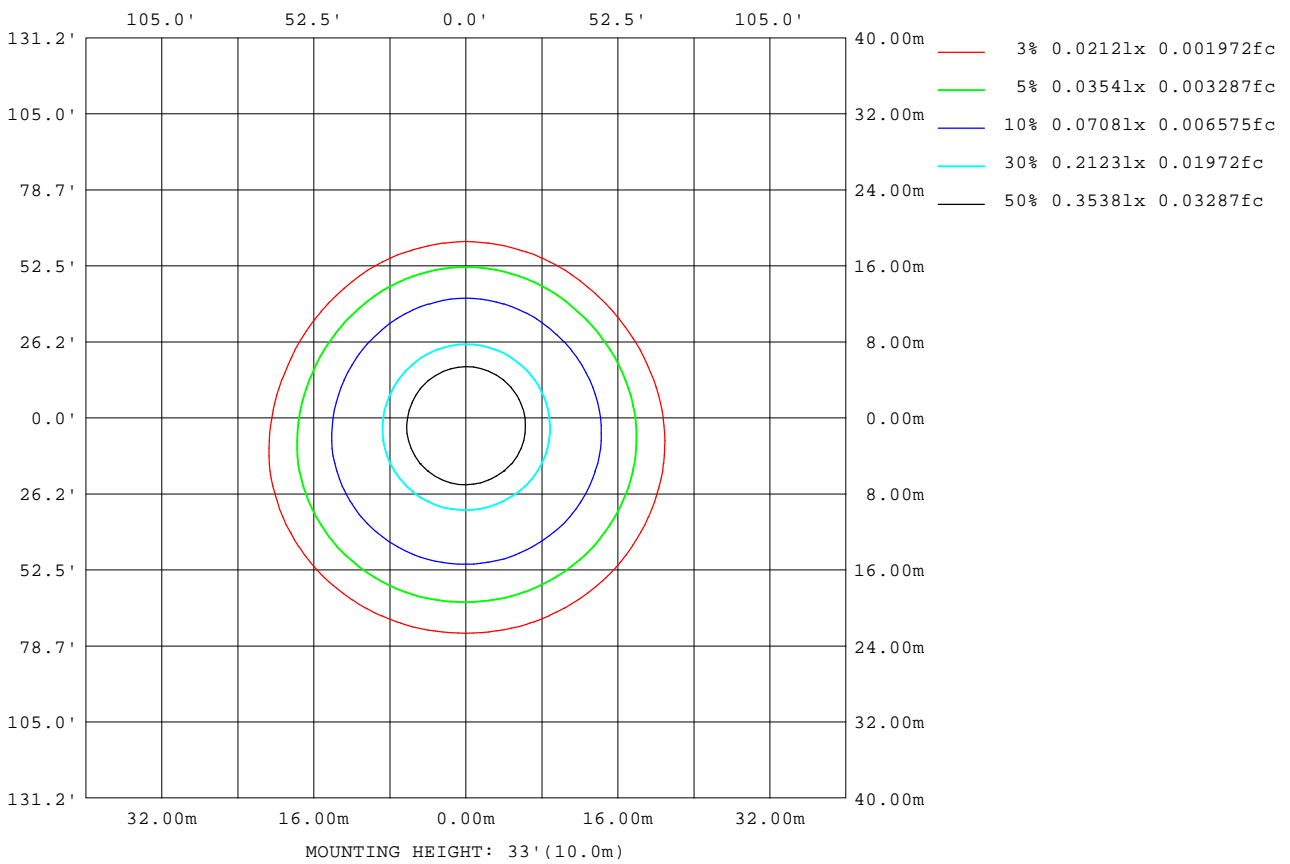
Note:The Curves indicate the illuminated area and the average illumination when the luminaire is at different distance.

C Range: 0 - 360DEG
 C Interval: 15.0DEG
 Test Speed: MEDIUM
 Temperature:25.3DEG
 Operators:
 Test Date:21 April 2021

g Range: 0 - 180DEG
 g Interval: 0.5DEG
 Test System:EVERFINE GO-SPEX500_V1 SYSTEM V2.0.402
 Humidity:65.0%
 Test Distance:3.010m [K=1.0000]
 Remarks:

ISOLUX DIAGRAM

Test:U:120.07V I:0.0304A P:3.5684W PF:0.9791 Freq:59.98Hz Lamp Flux:202.49x1 lm		
NAME: ASD-UCB-9D3CC-WH-5000K	TYPE:0	WEIGHT:
SPEC.:3W	DIM.:	SERIAL No.:
MFR.: ASD Lighting Corp	SUR.:	Shielding Angle:



C Range: 0 - 360DEG
 C Interval: 15.0DEG
 Test Speed: MEDIUM
 Temperature:25.3DEG
 Operators:
 Test Date:21 April 2021

g Range: 0 - 180DEG
 g Interval: 0.5DEG
 Test System:EVERFINE GO-SPEX500_V1 SYSTEM V2.0.402
 Humidity:65.0%
 Test Distance:3.010m [K=1.0000]
 Remarks:

LED Avg.L Report

Test:U:120.07V I:0.0304A P:3.5684W PF:0.9791 Freq:59.98Hz Lamp Flux:202.49x1 lm		
NAME: ASD-UCB-9D3CC-WH-5000K	TYPE:0	WEIGHT:
SPEC.:3W	DIM.:	SERIAL No.:
MFR.: ASD Lighting Corp	SUR.:	Shielding Angle:

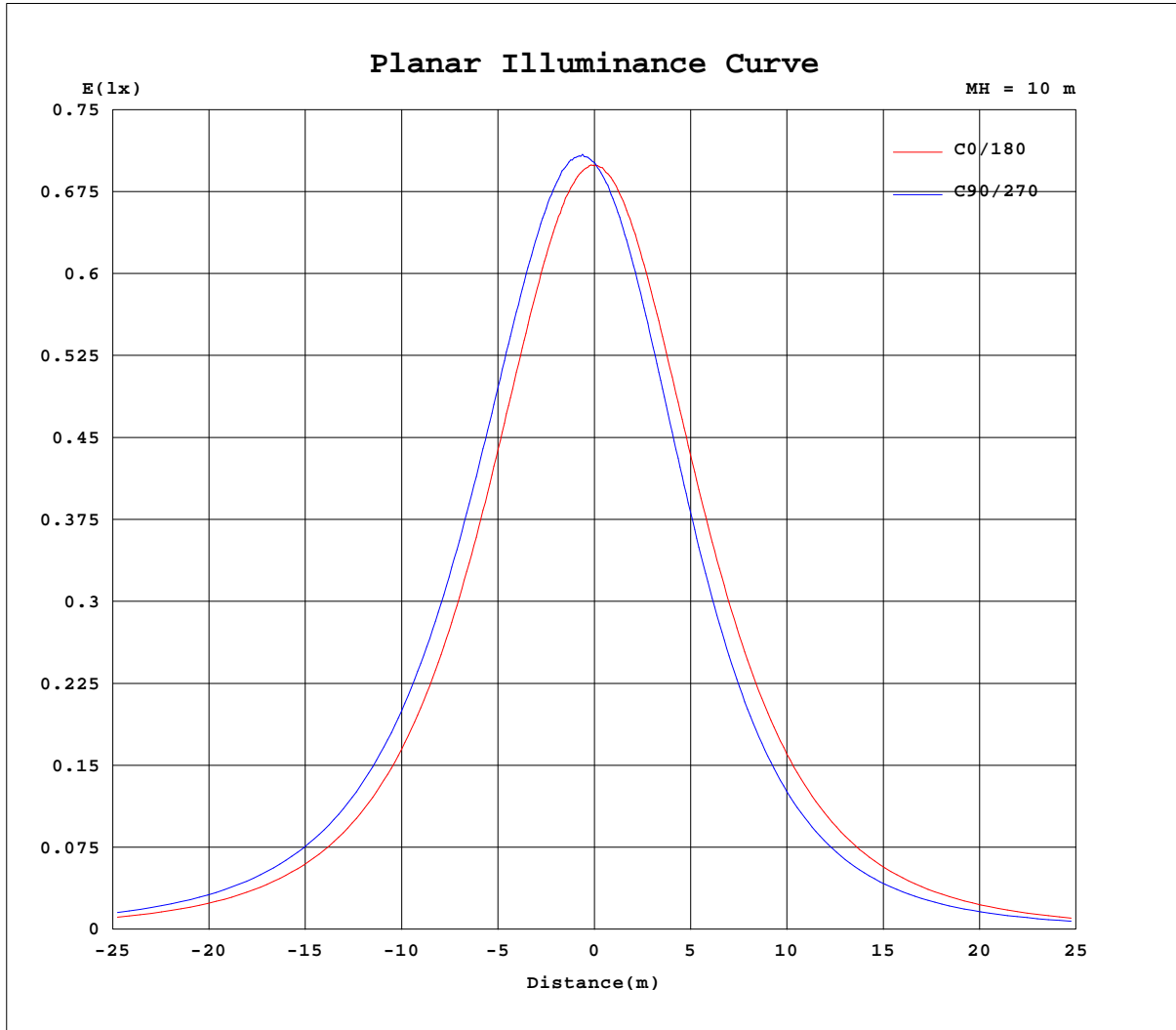
AvgL	cd/m2
L_0~180(65)av	116
L_0~180(75)av	95
L_0~180(85)av	38
L_90~270(65)av	120
L_90~270(75)av	114
L_90~270(85)av	134
L_45(65)av	118
L_45(75)av	109
L_45(85)av	108

Standard: GB/T 29293-2012

C Range: 0 - 360DEG
 C Interval: 15.0DEG
 Test Speed: MEDIUM
 Temperature:25.3DEG
 Operators:
 Test Date:21 April 2021

g Range: 0 - 180DEG
 g Interval: 0.5DEG
 Test System:EVERFINE GO-SPEX500_V1 SYSTEM V2.0.402
 Humidity:65.0%
 Test Distance:3.010m [K=1.0000]
 Remarks:

Planar Illuminance Curve



C Range: 0 - 360DEG
 C Interval: 15.0DEG
 Test Speed: MEDIUM
 Temperature: 25.3DEG
 Operators:
 Test Date: 21 April 2021

g Range: 0 - 180DEG
 g Interval: 0.5DEG
 Test System: EVERFINE GO-SPEX500_V1 SYSTEM V2.0.402
 Humidity: 65.0%
 Test Distance: 3.010m [K=1.0000]
 Remarks:

LUMINOUS DISTRIBUTION INTENSITY DATA

Test:U:120.07V I:0.0304A P:3.5684W PF:0.9791 Freq:59.98Hz Lamp Flux:202.49x1 lm		
NAME: ASD-UCB-9D3CC-WH-5000K	TYPE:0	WEIGHT:
SPEC.:3W	DIM.:	SERIAL No.:
MFR.: ASD Lighting Corp	SUR.:	Shielding Angle:

Table--1

UNIT: cd

C(DEG) g (DEG)	0	15	30	45	60	75	90	105	120	135	150	165	180	195	210	225	240	255	270
0	70.1	70.1	70.1	70.1	70.1	70.1	70.1	70.1	70.1	70.1	70.1	70.1	70.1	70.1	70.1	70.1	70.1	70.1	70.1
5	69.9	70.3	70.6	71.1	71.4	71.4	71.4	71.5	71.2	70.9	70.6	70.2	69.8	69.2	68.8	68.5	68.3	67.9	67.9
10	68.8	69.8	70.6	71.4	71.9	72.2	72.2	72.2	71.8	71.2	70.4	69.5	68.7	67.7	66.9	66.2	65.8	65.4	65.4
15	67.4	68.7	69.9	71.0	71.6	72.1	72.1	72.0	71.4	70.7	69.6	68.3	67.0	65.5	64.5	63.5	62.9	62.3	62.2
20	65.2	66.9	68.4	69.8	70.7	71.3	71.3	71.3	70.3	69.5	68.1	66.4	64.7	62.8	61.4	60.2	59.3	58.7	58.6
25	62.4	64.6	66.4	67.9	69.0	69.8	69.8	69.6	68.7	67.5	65.9	64.0	61.8	59.7	57.9	56.4	55.4	54.7	54.5
30	59.2	61.6	63.6	65.5	66.6	67.5	67.6	67.5	66.3	65.1	63.1	60.9	58.4	55.9	53.8	52.2	51.1	50.2	50.1
35	55.5	58.2	60.5	62.4	63.4	64.4	64.7	64.5	63.4	62.0	59.8	57.4	54.6	51.8	49.6	47.6	46.4	45.6	45.5
40	51.4	54.3	56.6	58.9	59.5	60.6	61.0	61.0	59.8	58.2	56.0	53.3	50.3	47.2	44.7	42.7	41.6	40.7	40.6
45	46.8	50.0	52.4	54.5	55.2	56.3	56.6	56.8	55.6	54.1	51.7	48.9	45.5	42.3	39.7	37.7	36.5	35.8	35.7
50	42.0	45.2	47.4	49.4	50.3	51.3	51.7	51.8	50.9	49.4	46.9	44.1	40.5	37.0	34.4	32.4	31.5	30.8	30.7
55	36.8	39.7	42.0	44.0	44.9	45.8	46.0	46.3	45.5	44.2	41.8	38.9	35.2	31.6	29.0	27.3	26.5	25.9	25.9
60	31.1	34.1	36.3	38.1	39.1	39.9	40.1	40.3	39.7	38.6	36.3	33.4	29.6	25.9	23.6	22.2	21.7	21.3	21.3
65	25.2	28.1	30.2	32.1	33.1	33.7	33.7	33.9	33.4	32.5	30.4	27.6	23.8	20.2	18.4	17.3	17.2	16.8	17.0
70	19.2	21.9	24.0	25.9	26.7	27.2	27.1	27.2	26.8	26.0	24.2	21.6	17.8	14.5	13.4	12.8	12.9	12.7	12.9
75	12.9	15.8	18.0	19.5	20.0	20.5	20.3	20.4	20.0	19.3	17.7	15.5	11.8	9.38	8.94	8.81	9.03	8.98	9.13
80	6.30	9.99	11.7	13.1	13.6	14.2	13.9	14.0	13.3	12.7	10.5	8.44	6.09	5.10	5.16	5.32	5.62	5.69	5.78
85	1.33	4.55	5.98	7.45	8.35	9.06	8.79	8.72	7.92	6.58	4.95	3.19	1.96	1.94	2.21	2.44	2.76	2.84	2.90
90	0.10	0.92	1.43	1.75	1.90	2.55	2.55	2.29	1.46	1.09	0.96	0.35	0.16	0.21	0.28	0.46	0.77	0.70	0.94
95	0.08	0.08	0.15	1.34	2.10	3.04	3.18	2.61	2.10	0.62	0.08	0.06	0.06	0.07	0.08	0.09	0.11	0.12	0.12
100	0.12	0.11	0.38	0.72	0.68	0.83	0.87	0.68	0.32	0.49	0.12	0.09	0.11	0.11	0.12	0.12	0.14	0.16	0.16
105	0.17	0.14	0.27	0.62	0.80	1.14	1.18	0.94	0.36	0.32	0.10	0.16	0.16	0.16	0.16	0.16	0.17	0.17	0.17
110	0.25	0.23	0.18	0.40	0.56	0.69	0.70	0.58	0.22	0.21	0.14	0.21	0.21	0.20	0.20	0.19	0.20	0.20	0.21
115	0.30	0.30	0.20	0.22	0.36	0.40	0.37	0.34	0.17	0.16	0.23	0.25	0.22	0.22	0.22	0.22	0.23	0.23	0.24
120	0.33	0.35	0.20	0.22	0.24	0.26	0.25	0.22	0.18	0.23	0.30	0.28	0.24	0.24	0.24	0.22	0.25	0.25	0.26
125	0.34	0.36	0.25	0.29	0.26	0.25	0.23	0.23	0.24	0.32	0.23	0.30	0.25	0.24	0.24	0.22	0.22	0.26	0.28
130	0.31	0.32	0.21	0.38	0.35	0.31	0.29	0.30	0.34	0.22	0.27	0.28	0.23	0.22	0.22	0.23	0.25	0.27	0.29
135	0.28	0.26	0.22	0.35	0.45	0.41	0.39	0.40	0.44	0.21	0.19	0.23	0.21	0.21	0.22	0.23	0.25	0.23	0.24
140	0.26	0.23	0.23	0.40	0.53	0.51	0.49	0.50	0.49	0.24	0.19	0.19	0.21	0.20	0.21	0.23	0.24	0.24	0.23
145	0.24	0.22	0.22	0.25	0.54	0.57	0.55	0.53	0.49	0.20	0.18	0.19	0.20	0.20	0.21	0.23	0.22	0.24	0.24
150	0.22	0.21	0.22	0.21	0.23	0.53	0.54	0.50	0.20	0.19	0.17	0.22	0.20	0.19	0.19	0.23	0.21	0.22	0.23
155	0.21	0.26	0.19	0.20	0.20	0.21	0.20	0.20	0.18	0.17	0.23	0.23	0.19	0.17	0.17	0.18	0.19	0.21	0.21
160	0.19	0.27	0.26	0.17	0.23	0.19	0.18	0.24	0.19	0.15	0.25	0.20	0.17	0.17	0.16	0.15	0.17	0.19	0.18
165	0.16	0.23	0.26	0.28	0.25	0.28	0.27	0.28	0.23	0.24	0.23	0.16	0.15	0.15	0.14	0.13	0.14	0.15	0.15
170	0.15	0.19	0.24	0.23	0.18	0.20	0.19	0.17	0.17	0.18	0.19	0.14	0.14	0.14	0.13	0.12	0.13	0.14	0.15
175	0.16	0.16	0.19	0.21	0.20	0.21	0.21	0.20	0.19	0.16	0.14	0.14	0.14	0.13	0.12	0.13	0.15	0.14	0.15
180	0.18	0.17	0.18	0.18	0.16	0.16	0.16	0.16	0.16	0.16	0.17	0.17	0.18	0.17	0.18	0.18	0.16	0.16	0.16

C Range: 0 - 360DEG

C Interval: 15.0DEG

Test Speed: MEDIUM

Temperature:25.3DEG

Operators:

Test Date:21 April 2021

g Range: 0 - 180DEG

g Interval: 0.5DEG

Test System:EVERFINE GO-SPEX500_V1 SYSTEM V2.0.402

Humidity:65.0%

Test Distance:3.010m [K=1.0000]

Remarks:

LUMINOUS DISTRIBUTION INTENSITY DATA

Test:U:120.07V I:0.0304A P:3.5684W PF:0.9791 Freq:59.98Hz Lamp Flux:202.49x1 lm		
NAME: ASD-UCB-9D3CC-WH-5000K	TYPE:0	WEIGHT:
SPEC.:3W	DIM.:	SERIAL No.:
MFR.: ASD Lighting Corp	SUR.:	Shielding Angle:

Table--2

UNIT: cd

C(DEG) g (DEG)	285	300	315	330	345														
0	70.1	70.1	70.1	70.1	70.1														
5	68.2	68.2	68.6	69.0	69.3														
10	65.6	65.9	66.4	67.2	67.9														
15	62.4	62.9	63.8	64.9	65.9														
20	58.9	59.5	60.5	61.9	63.3														
25	54.9	55.6	56.8	58.5	60.2														
30	50.5	51.4	52.7	54.6	56.6														
35	45.8	46.9	48.2	50.4	52.7														
40	41.0	41.9	43.4	45.7	48.2														
45	35.9	36.9	38.4	40.8	43.5														
50	31.0	31.8	33.2	35.5	38.4														
55	26.0	26.7	27.9	30.1	33.1														
60	21.3	21.8	22.6	24.6	27.5														
65	16.9	17.2	17.6	19.1	21.7														
70	12.7	12.9	12.9	13.9	15.9														
75	8.96	8.95	8.76	9.15	10.3														
80	5.65	5.51	5.22	5.12	5.49														
85	2.76	2.62	2.33	2.12	1.90														
90	0.79	0.76	0.52	0.39	0.24														
95	0.12	0.12	0.12	0.08	0.08														
100	0.14	0.14	0.16	0.12	0.12														
105	0.18	0.17	0.19	0.16	0.17														
110	0.21	0.20	0.23	0.20	0.20														
115	0.24	0.23	0.25	0.23	0.23														
120	0.26	0.24	0.26	0.25	0.25														
125	0.25	0.24	0.26	0.26	0.25														
130	0.27	0.25	0.25	0.24	0.23														
135	0.25	0.26	0.24	0.23	0.22														
140	0.23	0.27	0.23	0.22	0.22														
145	0.23	0.24	0.23	0.21	0.21														
150	0.23	0.24	0.22	0.21	0.21														
155	0.21	0.20	0.19	0.19	0.19														
160	0.18	0.17	0.18	0.17	0.18														
165	0.16	0.16	0.15	0.17	0.16														
170	0.15	0.14	0.15	0.16	0.16														
175	0.14	0.14	0.14	0.16	0.16														
180	0.16	0.16	0.17	0.17	0.16														

C Range: 0 - 360DEG
 C Interval: 15.0DEG
 Test Speed: MEDIUM
 Temperature:25.3DEG
 Operators:
 Test Date:21 April 2021

g Range: 0 - 180DEG
 g Interval: 0.5DEG
 Test System:EVERFINE GO-SPEX500_V1 SYSTEM V2.0.402
 Humidity:65.0%
 Test Distance:3.010m [K=1.0000]
 Remarks: