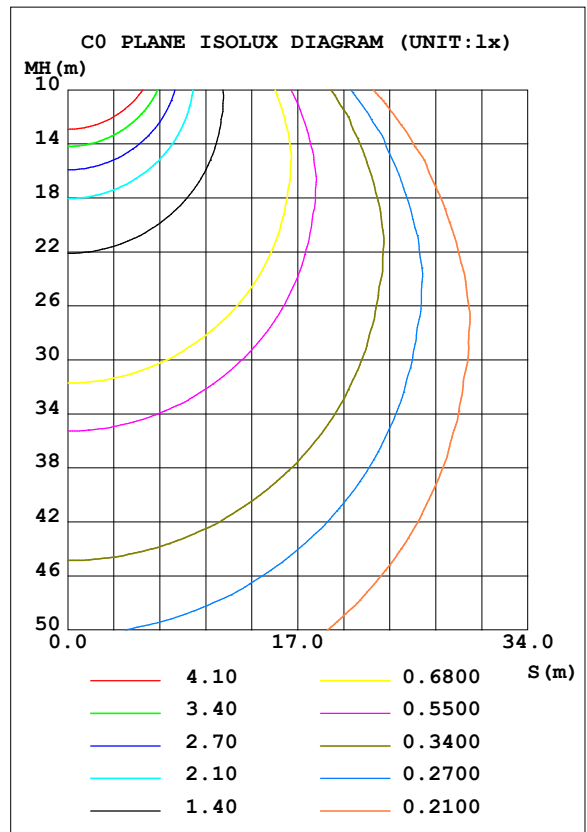
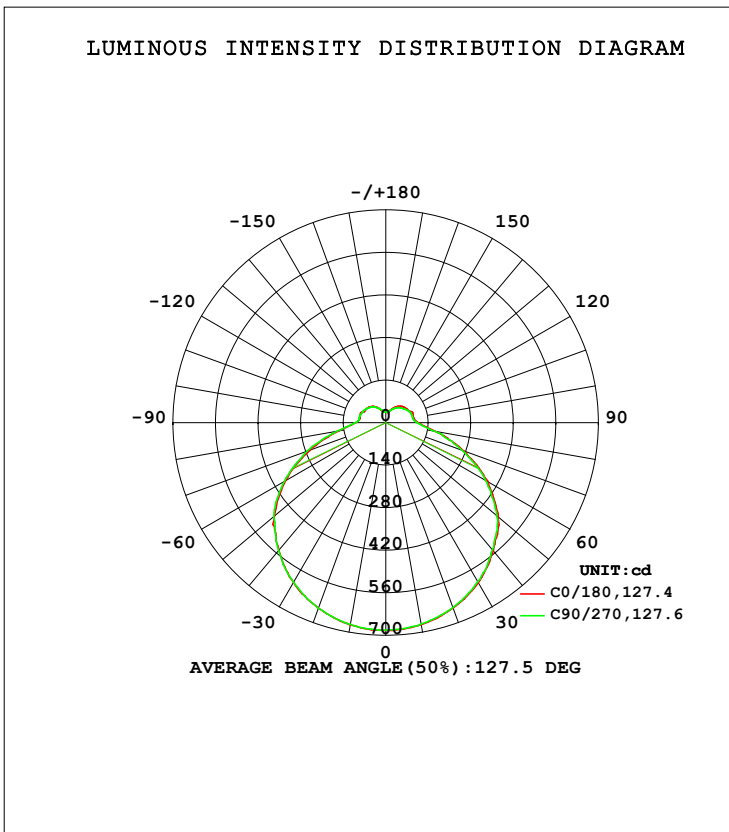


LUMINAIRE PHOTOMETRIC TEST REPORT

Test:U:120.17V I:0.3427A P:40.714W PF:0.9886 Freq:60.00Hz Lamp Flux:2855.17x1 lm		
NAME: ASD Lighting Corp	TYPE:ASD-LFC-GX-20D42S-RGB-SMARTLIGHT:	
SPEC.:ASD-LFC-GX-20D42S-RGB-SMART-2700K	DIM.:	SERIAL No.:
MFR.: ASD Lighting Corp	SUR.: -0.47	Shielding Angle:

DATA OF LAMP		PHOTOMETRIC DATA			
MODEL		Imax (cd)	684.0	S/MH (C0/180)	1.32
NOMINAL POWER (W)	--	LOR (%)	100.0	S/MH (C90/270)	1.33
RATED VOLTAGE (V)	--	TOTAL FLUX (lm)	2855.2	<input type="checkbox"/> UP, DN (C0-180)	8.4, 41.6
NOMINAL FLUX (lm)	2855.17	CIE CLASS	SEMI-D.	<input type="checkbox"/> UP, DN (C180-360)	8.3, 41.7
LAMPS INSIDE	1	<input type="checkbox"/> up (%)	16.7	CIBSE SHR NOM	1.50
TEST VOLTAGE (V)	--	<input type="checkbox"/> down (%)	83.3	CIBSE SHR MAX	1.55



C Range: 0 - 360DEG
 C Interval: 22.5DEG
 Test Speed: HIGH
 Temperature: 25.3DEG
 Operators: chen
 Test Date: 2022-10-04

Range: 0 - 180DEG
 Interval: 1.0DEG
 Test System: EVERFINE GO-3000H_V1 SYSTEM V2.00.411
 Humidity: 65.0%
 Test Distance: 8.650m [K=1.0000]
 Remarks:

ZONAL FLUX DIAGRAM

ZONAL FLUX DIAGRAM:

mm	C0	C45	C90	C135	C180	C225	C270	C315	mm	□ zone	□ total	%lum,lamp
10	674.6	673.6	672.8	674.1	675.7	675.1	674.1	673.9	0- 10	64.75	64.75	2.27,2.27
20	649.0	648.0	646.7	647.0	649.6	649.0	650.4	648.3	10- 20	187.4	252.1	8.83,8.83
30	608.7	606.6	604.6	604.5	606.8	607.3	606.8	607.0	20- 30	290.5	542.6	19,19
40	550.9	548.3	546.1	543.3	547.4	550.2	548.7	549.3	30- 40	362.7	905.3	31.7,31.7
50	483.0	479.1	476.6	473.9	478.4	479.3	482.2	483.9	40- 50	398.2	1304	45.7,45.7
60	389.3	380.1	378.4	376.7	380.2	382.0	384.7	384.8	50- 60	386.8	1690	59.2,59.2
70	273.2	270.5	268.7	265.7	264.7	275.9	275.8	272.3	60- 70	323.9	2014	70.5,70.5
80	165.7	164.6	163.8	158.1	157.8	162.7	161.5	165.5	70- 80	227.1	2241	78.5,78.5
90	106.8	106.4	103.1	100.6	99.12	99.10	100.6	103.6	80- 90	137.2	2378	83.3,83.3
100	93.59	91.35	90.63	87.25	86.84	85.92	89.73	89.92	90-100	102.4	2481	86.9,86.9
110	94.69	87.42	89.70	84.05	89.03	81.56	86.23	84.35	100-110	93.25	2574	90.2,90.2
120	84.21	80.63	82.41	78.75	79.84	78.64	82.64	79.43	110-120	83.55	2658	93.1,93.1
130	79.66	72.37	73.49	72.05	76.92	73.18	75.88	73.06	120-130	69.39	2727	95.5,95.5
140	71.24	60.42	65.12	61.70	70.28	62.53	68.18	60.70	130-140	53.97	2781	97.4,97.4
150	57.57	48.54	53.86	50.21	58.56	51.13	56.92	49.83	140-150	37.27	2818	98.7,98.7
160	43.69	40.79	42.19	41.67	44.64	42.96	45.88	42.11	150-160	22.37	2841	99.5,99.5
170	35.03	35.62	35.93	34.93	35.49	36.40	37.36	36.40	160-170	11.19	2852	99.9,99.9
180	36.00	33.55	35.73	34.97	35.98	33.57	35.73	34.96	170-180	3.340	2855	100,100
DEG	LUMINOUS INTENSITY:cd									UNIT:lm		

Conical surface Flux(90deg): 1102.1 lm

%lum = 38.6%

%lamp = 38.6%

Conical surface Flux(120deg): 1690.3 lm

%lum = 59.2%

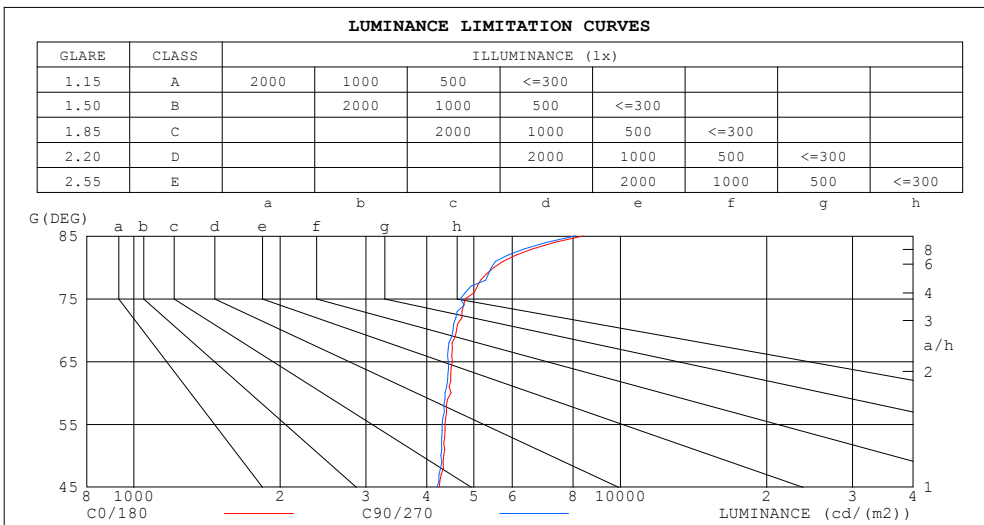
%lamp = 59.2%

C Range: 0 - 360DEG
 C Interval: 22.5DEG
 Test Speed: HIGH
 Temperature:25.3DEG
 Operators:chen
 Test Date:2022-10-04

□ Range: 0 - 180DEG
 □ Interval: 1.0DEG
 Test System:EVERFINE GO-3000H_V1 SYSTEM V2.00.411
 Humidity:65.0%
 Test Distance:8.650m [K=1.0000]
 Remarks:

LUMINANCE LIMITATION CURVES

Test:U:120.17V I:0.3427A P:40.714W PF:0.9886 Freq:60.00Hz Lamp Flux:2855.17x1 lm		
NAME: ASD Lighting Corp	TYPE:ASD-LFC-GX-20D42S-RGB-SMARTIGHT:	
SPEC.:ASD-LFC-GX-20D42S-RGB-SMART-2700K	DIM.:	SERIAL No.:
MFR.: ASD Lighting Corp	SUR.: -0.47	Shielding Angle:



LUMINANCE cd/(m2)		
G (DEG)	C0/180	C90/270
85	8377	8075
80	5502	5438
75	4806	4694
70	4606	4530
65	4515	4429
60	4491	4365
55	4361	4302
50	4333	4276
45	4247	4198

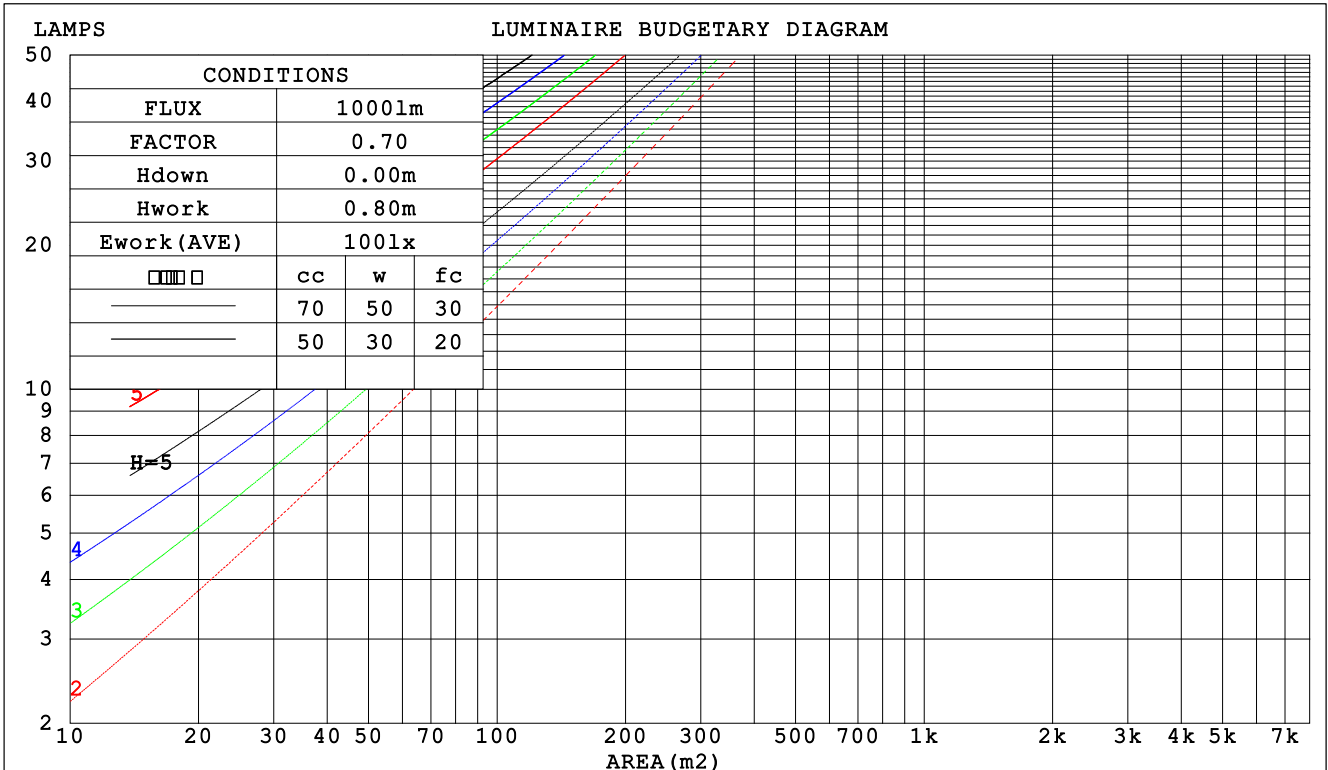
C Range: 0 - 360DEG
 C Interval: 22.5DEG
 Test Speed: HIGH
 Temperature:25.3DEG
 Operators:chen
 Test Date:2022-10-04

Range: 0 - 180DEG
 Interval: 1.0DEG
 Test System:EVERFINE GO-3000H_V1 SYSTEM V2.00.411
 Humidity:65.0%
 Test Distance:8.650m [K=1.0000]
 Remarks:

CU AND LUMINAIRE BUDGETARY ESTIMATE DIAGRAM

Test:U:120.17V I:0.3427A P:40.714W PF:0.9886 Freq:60.00Hz Lamp Flux:2855.17x1 lm		
NAME: ASD Lighting Corp	TYPE:ASD-LFC-GX-20D42S-RGB-SMARTLIGHT:	
SPEC.:ASD-LFC-GX-20D42S-RGB-SMART-2700K	DIM.:	SERIAL No.:
MFR.: ASD Lighting Corp	SUR.: -0.47	Shielding Angle:

□cc	80%			70%			50%			30%			10%			0
□w	50%	30%	10%	50%	30%	10%	50%	30%	10%	50%	30%	10%	50%	30%	10%	0
□fc	20%			20%			20%			20%			20%			0
RCR	RCR:Room Cavity Ratio						Coefficients of Utilization(CU)									
0.0	1.15	1.15	1.15	1.10	1.10	1.10	1.02	1.02	1.02	.94	.94	.94	.87	.87	.87	.83
1.0	.98	.93	.89	.94	.89	.86	.86	.83	.80	.80	.77	.74	.73	.71	.69	.66
2.0	.84	.77	.71	.81	.74	.68	.75	.69	.64	.69	.64	.60	.63	.60	.57	.53
3.0	.73	.65	.58	.70	.63	.56	.65	.58	.53	.60	.55	.50	.55	.51	.47	.44
4.0	.64	.55	.48	.62	.54	.47	.57	.50	.45	.53	.47	.42	.49	.44	.40	.37
5.0	.57	.48	.41	.55	.47	.40	.51	.44	.38	.47	.41	.36	.44	.39	.34	.32
6.0	.51	.42	.36	.49	.41	.35	.46	.39	.33	.43	.36	.32	.40	.34	.30	.27
7.0	.46	.37	.31	.45	.36	.30	.42	.34	.29	.39	.32	.28	.36	.31	.26	.24
8.0	.42	.33	.27	.41	.33	.27	.38	.31	.26	.35	.29	.25	.33	.28	.23	.21
9.0	.38	.30	.25	.37	.29	.24	.35	.28	.23	.33	.26	.22	.30	.25	.21	.19
10.0	.35	.27	.22	.34	.27	.22	.32	.25	.21	.30	.24	.20	.28	.23	.19	.17



C Range: 0 - 360DEG
 C Interval: 22.5DEG
 Test Speed: HIGH
 Temperature:25.3DEG
 Operators:chen
 Test Date:2022-10-04

□ Range: 0 - 180DEG
 □ Interval: 1.0DEG
 Test System:EVERFINE GO-3000H_V1 SYSTEM V2.00.411
 Humidity:65.0%
 Test Distance:8.650m [K=1.0000]
 Remarks:

WEC AND CCEC

Test:U:120.17V I:0.3427A P:40.714W PF:0.9886 Freq:60.00Hz Lamp Flux:2855.17x1 lm		
NAME: ASD Lighting Corp	TYPE:ASD-LFC-GX-20D42S-RGB-SMARTIGHT:	
SPEC.:ASD-LFC-GX-20D42S-RGB-SMART-2700K	DIM.:	SERIAL No.:
MFR.: ASD Lighting Corp	SUR.: -0.47	Shielding Angle:

<input type="checkbox"/> cc	80%			70%			50%			30%			10%			0
<input type="checkbox"/> w	50%	30%	10%	50%	30%	10%	50%	30%	10%	50%	30%	10%	50%	30%	10%	0
<input type="checkbox"/> fc	20%			20%			20%			20%			20%			0
RCR	RCR:Room Cavity Ratio						Wall Exitance Coefficients (WEC)									
0.0																
1.0	.350	.199	.063	.338	.193	.061	.315	.180	.058	.294	.169	.054	.274	.159	.051	
2.0	.313	.172	.053	.302	.166	.051	.281	.157	.049	.262	.147	.046	.245	.138	.044	
3.0	.283	.151	.045	.273	.146	.044	.254	.138	.042	.237	.130	.040	.221	.122	.038	
4.0	.258	.134	.039	.249	.130	.038	.232	.123	.037	.216	.116	.035	.201	.109	.033	
5.0	.236	.120	.035	.228	.117	.034	.212	.111	.033	.198	.104	.031	.185	.099	.030	
6.0	.217	.109	.031	.210	.106	.031	.196	.100	.029	.183	.095	.028	.170	.090	.027	
7.0	.201	.099	.028	.194	.097	.028	.182	.092	.026	.170	.087	.025	.158	.082	.024	
8.0	.187	.091	.026	.181	.089	.025	.169	.084	.024	.158	.080	.023	.148	.076	.022	
9.0	.175	.084	.024	.169	.082	.023	.158	.078	.022	.148	.074	.021	.138	.070	.020	
10.0	.164	.079	.022	.159	.077	.021	.149	.073	.020	.139	.069	.020	.130	.065	.019	

<input type="checkbox"/> cc	80%			70%			50%			30%			10%			0
<input type="checkbox"/> w	50%	30%	10%	50%	30%	10%	50%	30%	10%	50%	30%	10%	50%	30%	10%	0
<input type="checkbox"/> fc	20%			20%			20%			20%			20%			0
RCR	RCR:Room Cavity Ratio						Ceiling Cavity Exitance Coefficients (CCEC)									
0.0	.318	.318	.318	.272	.272	.272	.185	.185	.185	.106	.106	.106	.034	.034	.034	
1.0	.311	.284	.259	.266	.244	.223	.182	.168	.154	.105	.097	.090	.034	.031	.029	
2.0	.304	.261	.225	.261	.225	.194	.179	.155	.135	.103	.090	.079	.033	.029	.026	
3.0	.297	.244	.202	.254	.211	.175	.175	.146	.123	.101	.085	.073	.032	.028	.024	
4.0	.289	.232	.187	.248	.200	.163	.171	.139	.115	.099	.082	.068	.032	.027	.022	
5.0	.282	.222	.177	.242	.192	.154	.167	.134	.109	.097	.079	.065	.031	.026	.021	
6.0	.275	.214	.170	.236	.185	.148	.163	.130	.105	.095	.076	.062	.030	.025	.021	
7.0	.268	.207	.164	.230	.179	.143	.159	.126	.102	.092	.074	.060	.030	.024	.020	
8.0	.261	.201	.160	.225	.175	.140	.156	.123	.099	.091	.072	.059	.029	.024	.020	
9.0	.255	.197	.157	.220	.171	.137	.152	.120	.097	.089	.071	.058	.029	.023	.019	
10.0	.249	.193	.155	.215	.167	.135	.149	.118	.096	.087	.070	.057	.028	.023	.019	

C Range: 0 - 360DEG
 C Interval: 22.5DEG
 Test Speed: HIGH
 Temperature:25.3DEG
 Operators:chen
 Test Date:2022-10-04

Range: 0 - 180DEG
 Interval: 1.0DEG
 Test System:EVERFINE GO-3000H_V1 SYSTEM V2.00.411
 Humidity:65.0%
 Test Distance:8.650m [K=1.0000]
 Remarks:

UGR(Unified Glare Rating) Table

Test:U:120.17V I:0.3427A P:40.714W PF:0.9886 Freq:60.00Hz Lamp Flux:2855.17x1 lm										
NAME: ASD Lighting Corp					TYPE:ASD-LFC-GX-20D42S-RGB-SMARTIGHT:					
SPEC.:ASD-LFC-GX-20D42S-RGB-SMART-2700K					DIM.:			SERIAL No.:		
MFR.: ASD Lighting Corp					SUR.: -0.47			Shielding Angle:		
ceiling/cavity	0.7	0.7	0.5	0.5	0.3	0.7	0.7	0.5	0.5	0.3
walls	0.5	0.3	0.5	0.3	0.3	0.5	0.3	0.5	0.3	0.3
working plane	0.2	0.2	0.2	0.2	0.2	0.2	0.2	0.2	0.2	0.2
Room dimensions	Viewed crosswise					Viewed endwise				
x = 2H y = 2H	17.1	18.5	17.6	19.0	19.5	17.1	18.5	17.6	18.9	19.5
3H	19.0	20.2	19.5	20.8	21.3	18.9	20.2	19.4	20.7	21.3
4H	19.9	21.1	20.4	21.6	22.2	19.8	21.0	20.3	21.5	22.1
6H	20.7	21.9	21.3	22.4	23.0	20.7	21.8	21.2	22.3	22.9
8H	21.2	22.2	21.7	22.8	23.4	21.1	22.1	21.6	22.7	23.3
12H	21.6	22.7	22.2	23.2	23.9	21.5	22.6	22.1	23.1	23.8
4H 2H	17.8	19.0	18.3	19.5	20.1	17.7	18.9	18.3	19.5	20.1
3H	19.8	20.9	20.4	21.4	22.1	19.8	20.8	20.4	21.4	22.0
4H	20.9	21.8	21.5	22.4	23.1	20.8	21.7	21.4	22.3	23.0
6H	21.9	22.7	22.5	23.4	24.1	21.8	22.7	22.5	23.3	24.0
8H	22.4	23.2	23.1	23.8	24.6	22.3	23.1	23.0	23.7	24.5
12H	23.0	23.7	23.7	24.4	25.1	22.9	23.6	23.5	24.3	25.0
8H 4H	21.2	22.0	21.9	22.7	23.4	21.2	22.0	21.8	22.6	23.3
6H	22.5	23.2	23.2	23.8	24.6	22.4	23.1	23.1	23.8	24.5
8H	23.2	23.8	23.9	24.5	25.2	23.1	23.7	23.8	24.4	25.2
12H	24.0	24.5	24.7	25.2	26.0	23.9	24.4	24.6	25.1	25.9
12H 4H	21.3	22.0	22.0	22.7	23.4	21.2	22.0	21.9	22.6	23.4
6H	22.6	23.2	23.3	23.9	24.7	22.6	23.2	23.3	23.8	24.6
8H	23.4	23.9	24.1	24.6	25.4	23.3	23.8	24.0	24.5	25.3
Variations with the observer position at spacings:										
S = 1.0H	+ 0.1 / - 0.1					+ 0.1 / - 0.1				
1.5H	+ 0.2 / - 0.3					+ 0.2 / - 0.3				
2.0H	+ 0.2 / - 0.4					+ 0.2 / - 0.4				

CIE Pub.117, 2855 lm Total Lamp Luminous Flux Corrected (8log(F/F0) = 3.6)
 Area: 0.173406 m2

C Range: 0 - 360DEG
 C Interval: 22.5DEG
 Test Speed: HIGH
 Temperature:25.3DEG
 Operators:chen
 Test Date:2022-10-04

Range: 0 - 180DEG
 Interval: 1.0DEG
 Test System:EVERFINE GO-3000H_V1 SYSTEM V2.00.411
 Humidity:65.0%
 Test Distance:8.650m [K=1.0000]
 Remarks:

UTILIZATION FACTORS TABLE

Test:U:120.17V I:0.3427A P:40.714W PF:0.9886 Freq:60.00Hz Lamp Flux:2855.17x1 lm		
NAME: ASD Lighting Corp	TYPE:ASD-LFC-GX-20D42S-RGB-SMART:	
SPEC.:ASD-LFC-GX-20D42S-RGB-SMART-2700K	DIM.:	SERIAL No.:
MFR.: ASD Lighting Corp	SUR.: -0.47	Shielding Angle:

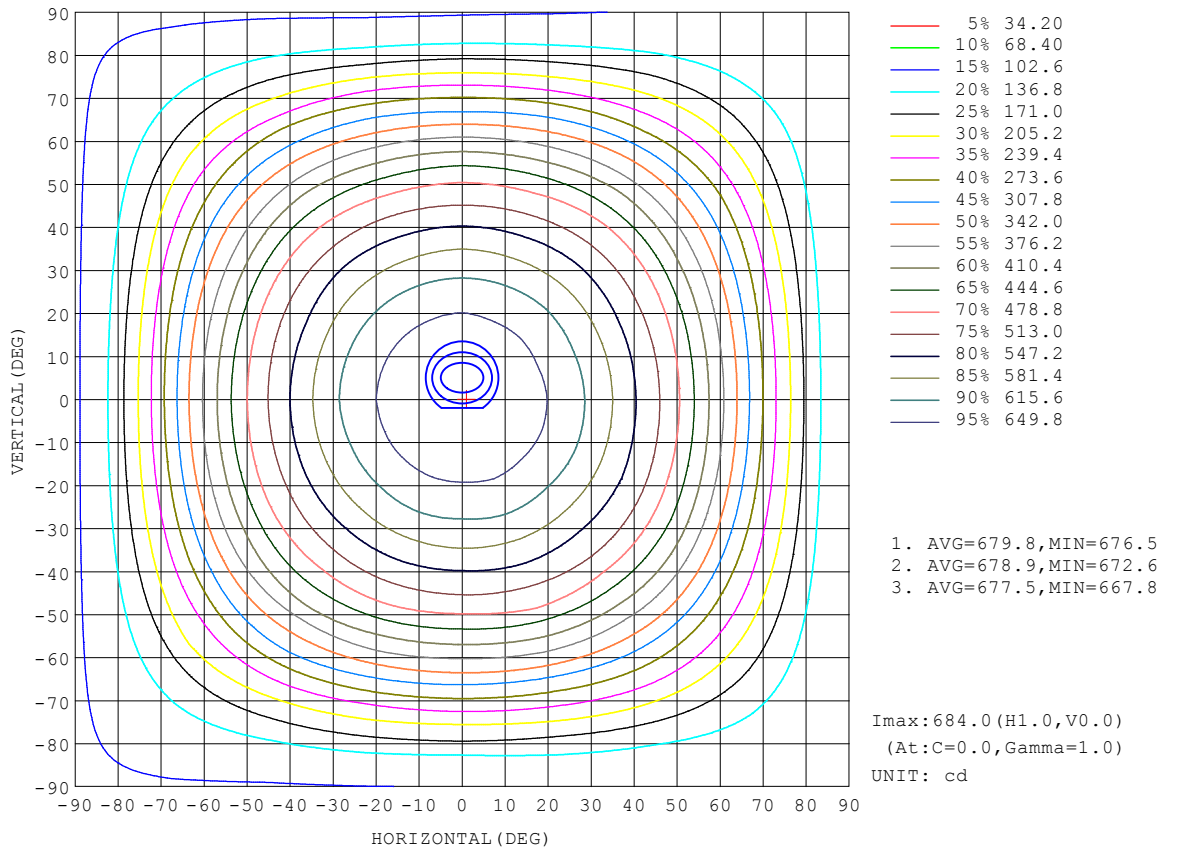
REFLECTANCE										
Ceiling	0.8	0.8	0.8	0.7	0.7	0.7	0.5	0.5	0.5	0
Walls	0.7	0.5	0.3	0.7	0.5	0.3	0.7	0.5	0.3	0
Working plane	0.2	0.2	0.2	0.2	0.2	0.2	0.2	0.2	0.2	0
ROOM INDEX	UTILIZATION FACTORS (PERCENT) $k(RI) \times RCR = 5$									
k = 0.60	50	37	30	48	37	30	46	36	29	23
0.80	59	46	39	57	46	38	55	44	37	29
1.00	67	55	47	65	54	46	62	54	45	36
1.25	74	62	54	72	61	53	68	58	52	42
1.50	79	68	60	77	66	59	72	63	57	46
2.00	87	76	69	84	74	67	78	70	64	53
2.50	91	82	74	88	79	73	81	75	69	57
3.00	95	86	79	91	83	77	84	78	73	60
4.00	99	92	86	95	89	84	88	83	79	65
5.00	102	96	90	98	92	88	91	86	82	68
ROOM INDEX	UF(total)									Direct
According to DIN EN 13032-2 2004			Suspended				SHRNOM = 1.25			

C Range: 0 - 360DEG
 C Interval: 22.5DEG
 Test Speed: HIGH
 Temperature:25.3DEG
 Operators:chen
 Test Date:2022-10-04

Range: 0 - 180DEG
 Interval: 1.0DEG
 Test System:EVERFINE GO-3000H_V1 SYSTEM V2.00.411
 Humidity:65.0%
 Test Distance:8.650m [K=1.0000]
 Remarks:

ISOCANDELA DIAGRAM

Test:U:120.17V I:0.3427A P:40.714W PF:0.9886 Freq:60.00Hz Lamp Flux:2855.17x1 lm		
NAME: ASD Lighting Corp	TYPE:ASD-LFC-GX-20D42S-RGB-SMARTLIGHT:	
SPEC.:ASD-LFC-GX-20D42S-RGB-SMART-2700K	DIM.:	SERIAL No.:
MFR.: ASD Lighting Corp	SUR.: -0.47	Shielding Angle:

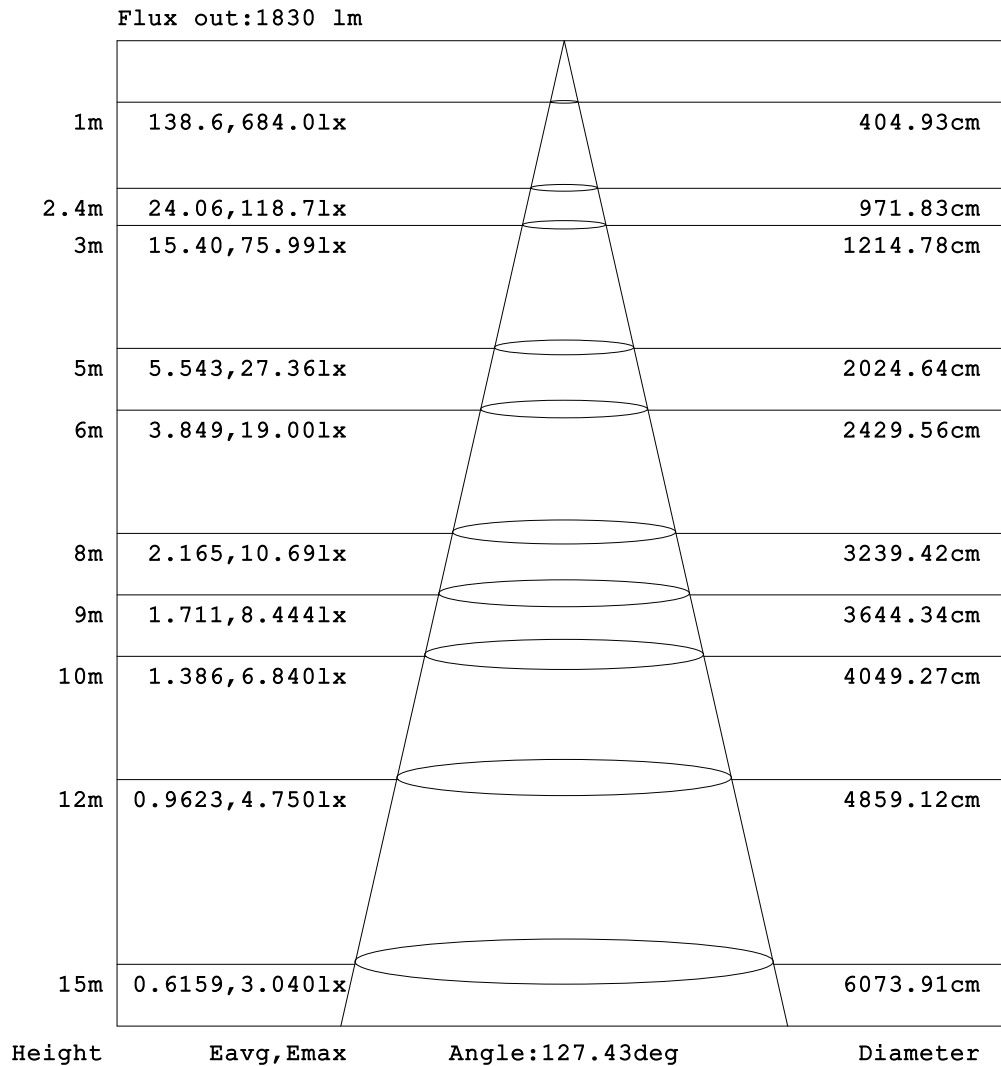


C Range: 0 - 360DEG
 C Interval: 22.5DEG
 Test Speed: HIGH
 Temperature: 25.3DEG
 Operators: chen
 Test Date: 2022-10-04

Range: 0 - 180DEG
 Interval: 1.0DEG
 Test System: EVERFINE GO-3000H_V1 SYSTEM V2.00.411
 Humidity: 65.0%
 Test Distance: 8.650m [K=1.0000]
 Remarks:

AAI Figure

Test:U:120.17V I:0.3427A P:40.714W PF:0.9886 Freq:60.00Hz Lamp Flux:2855.17x1 lm		
NAME: ASD Lighting Corp	TYPE:ASD-LFC-GX-20D42S-RGB-SMARTLIGHT:	
SPEC.:ASD-LFC-GX-20D42S-RGB-SMART-2700K	DIM.:	SERIAL No.:
MFR.: ASD Lighting Corp	SUR.: -0.47	Shielding Angle:



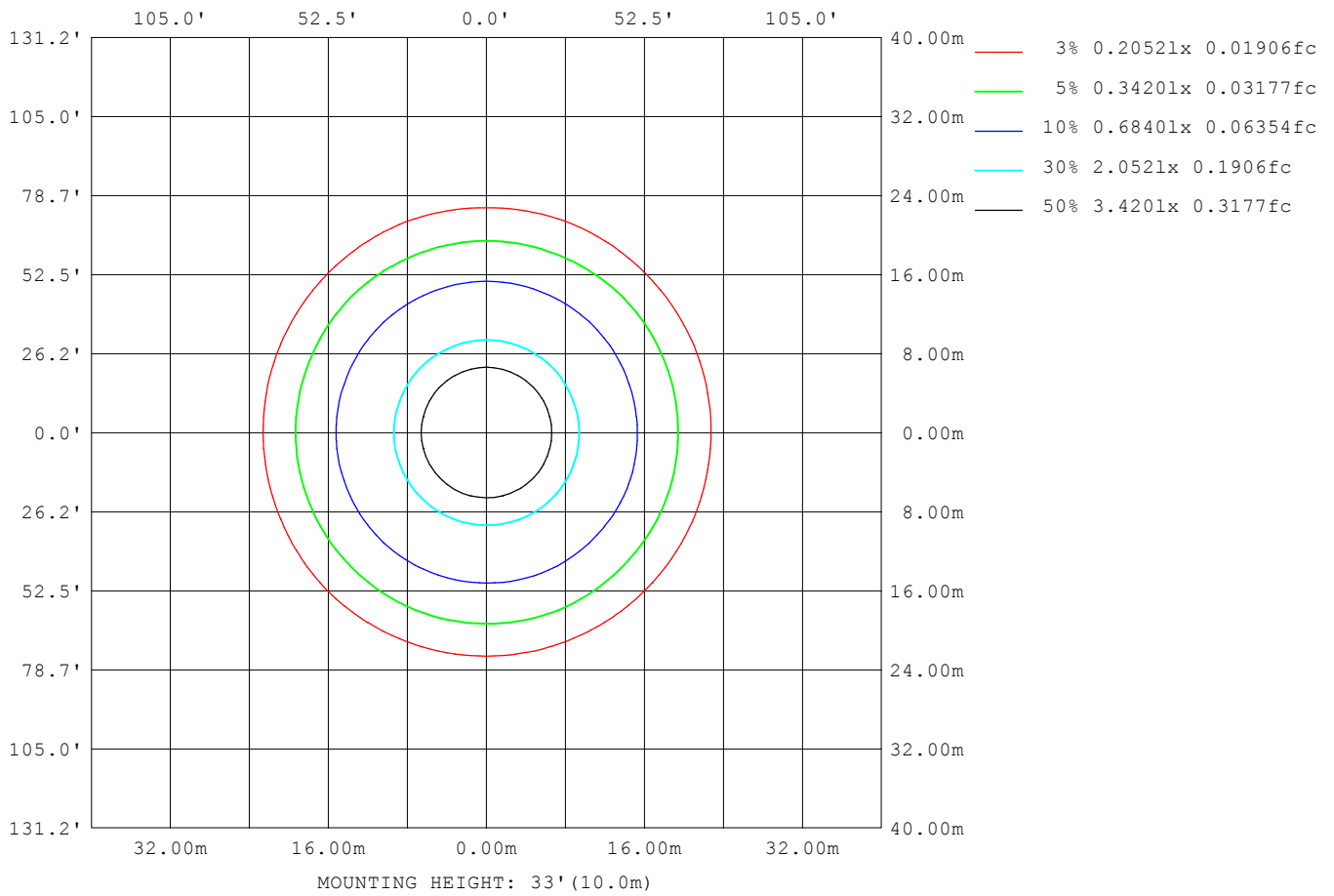
Note:The Curves indicate the illuminated area and the average illumination when the luminaire is at different distance.

C Range: 0 - 360DEG
 C Interval: 22.5DEG
 Test Speed: HIGH
 Temperature:25.3DEG
 Operators:chen
 Test Date:2022-10-04

Range: 0 - 180DEG
 Interval: 1.0DEG
 Test System:EVERFINE GO-3000H_V1 SYSTEM V2.00.411
 Humidity:65.0%
 Test Distance:8.650m [K=1.0000]
 Remarks:

ISOLUX DIAGRAM

Test:U:120.17V I:0.3427A P:40.714W PF:0.9886 Freq:60.00Hz Lamp Flux:2855.17x1 lm		
NAME: ASD Lighting Corp	TYPE:ASD-LFC-GX-20D42S-RGB-SMARTIGHT:	
SPEC.:ASD-LFC-GX-20D42S-RGB-SMART-2700K	DIM.:	SERIAL No.:
MFR.: ASD Lighting Corp	SUR.: -0.47	Shielding Angle:



C Range: 0 - 360DEG
 C Interval: 22.5DEG
 Test Speed: HIGH
 Temperature:25.3DEG
 Operators:chen
 Test Date:2022-10-04

Range: 0 - 180DEG
 Interval: 1.0DEG
 Test System:EVERFINE GO-3000H_V1 SYSTEM V2.00.411
 Humidity:65.0%
 Test Distance:8.650m [K=1.0000]
 Remarks:

LED Avg.L Report

Test:U:120.17V I:0.3427A P:40.714W PF:0.9886 Freq:60.00Hz Lamp Flux:2855.17x1 lm		
NAME: ASD Lighting Corp	TYPE:ASD-LFC-GX-20D42S-RGB-SMARTIGHT:	
SPEC.:ASD-LFC-GX-20D42S-RGB-SMART-2700K	DIM.:	SERIAL No.:
MFR.: ASD Lighting Corp	SUR.: -0.47	Shielding Angle:

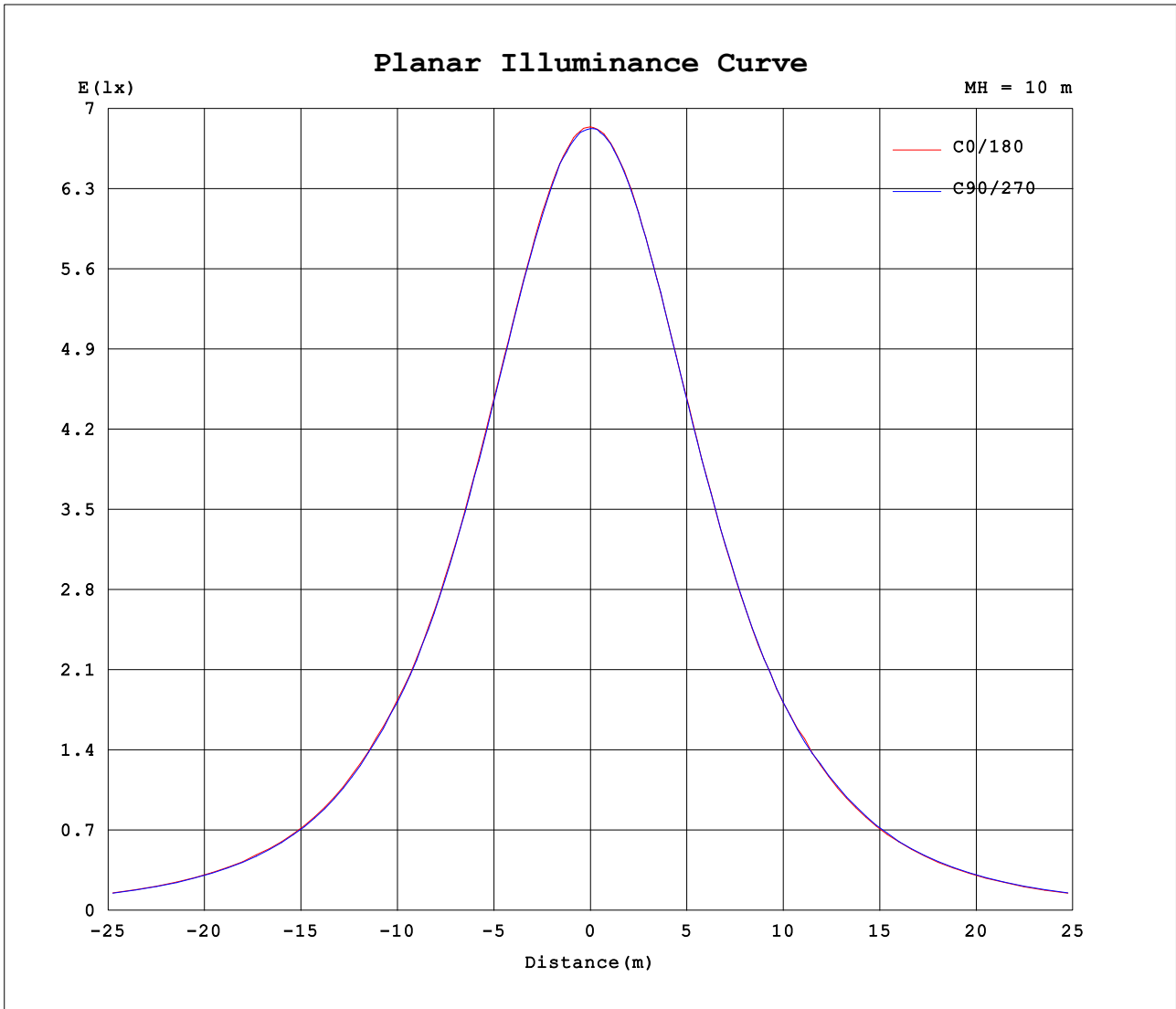
AvgL	cd/m2
L_0~180 (65) av	4476
L_0~180 (75) av	4729
L_0~180 (85) av	8122
L_90~270 (65) av	4467
L_90~270 (75) av	4740
L_90~270 (85) av	8064
L_45 (65) av	4461
L_45 (75) av	4767
L_45 (85) av	8106

Standard: GB/T 29293-2012

C Range: 0 - 360DEG
 C Interval: 22.5DEG
 Test Speed: HIGH
 Temperature:25.3DEG
 Operators:chen
 Test Date:2022-10-04

Range: 0 - 180DEG
 Interval: 1.0DEG
 Test System:EVERFINE GO-3000H_V1 SYSTEM V2.00.411
 Humidity:65.0%
 Test Distance:8.650m [K=1.0000]
 Remarks:

Planar Illuminance Curve



C Range: 0 - 360DEG
 C Interval: 22.5DEG
 Test Speed: HIGH
 Temperature:25.3DEG
 Operators:chen
 Test Date:2022-10-04

Range: 0 - 180DEG
 Interval: 1.0DEG
 Test System:EVERFINE GO-3000H_V1 SYSTEM V2.00.411
 Humidity:65.0%
 Test Distance:8.650m [K=1.0000]
 Remarks:

LUMINOUS DISTRIBUTION INTENSITY DATA

Test:U:120.17V I:0.3427A P:40.714W PF:0.9886 Freq:60.00Hz Lamp Flux:2855.17x1 lm		
NAME: ASD Lighting Corp	TYPE:ASD-LFC-GX-20D42S-RGB-SMARTIGHT:	
SPEC.:ASD-LFC-GX-20D42S-RGB-SMART-2700K	DIM.:	SERIAL No.:
MFR.: ASD Lighting Corp	SUR.: -0.47	Shielding Angle:

Table--1

UNIT: cd

C (DEG) □ (DEG)	0	22.5	45	67.5	90	112.5	135	157.5	180	202.5	225	247.5	270	292.5	315	337.5			
0	684	684	683	683	682	682	682	681	684	684	683	683	682	682	682	681			
5	682	681	681	680	680	680	679	679	682	682	681	681	681	680	680	679			
10	675	675	674	674	673	673	674	672	676	675	675	675	674	674	674	673			
15	665	664	663	663	662	662	661	661	664	664	665	664	664	663	663	662			
20	649	649	648	649	647	648	647	647	650	649	649	649	650	648	648	647			
25	631	631	630	630	628	629	628	628	630	629	630	629	630	630	630	629			
30	609	610	607	607	605	605	605	605	607	606	607	606	607	606	607	606			
35	581	582	580	580	579	578	576	578	580	579	579	578	581	579	580	580			
40	551	551	548	550	546	546	543	545	547	546	550	548	549	547	549	548			
45	521	526	520	518	515	514	512	511	514	514	514	514	514	513	515	517			
50	483	483	479	485	477	478	474	477	478	478	479	477	482	479	484	483			
55	434	439	434	436	428	430	426	429	432	430	431	435	437	435	434	433			
60	389	387	380	382	378	380	377	380	380	379	382	382	385	387	385	383			
65	331	327	326	325	325	321	327	321	325	327	326	330	330	337	330	329			
70	273	270	271	269	269	266	266	264	265	268	276	275	276	277	272	276			
75	216	218	217	213	211	209	209	211	209	217	213	214	215	214	217	218			
80	166	166	165	163	164	162	158	159	158	158	163	158	161	160	166	163			
85	127	127	125	124	122	122	120	119	119	119	120	119	122	122	125	125			
90	107	108	106	105	103	102	101	100	99.1	98.4	99.1	98.8	101	102	104	104			
95	96.8	97.6	95.9	95.3	94.0	92.5	91.0	91.0	89.9	89.4	89.3	89.2	90.5	91.5	92.7	94.0			
100	93.6	93.2	91.4	91.2	90.6	89.5	87.2	87.9	86.8	86.0	85.9	87.3	89.7	89.8	89.9	90.1			
105	92.8	92.5	88.9	89.3	90.8	87.7	84.9	86.9	87.7	85.0	83.6	85.4	88.7	87.6	86.5	88.3			
110	94.7	92.9	87.4	88.8	89.7	86.0	84.1	88.0	89.0	86.9	81.6	82.6	86.2	86.4	84.3	90.6			
115	87.7	89.1	84.1	85.4	86.2	81.4	81.5	84.4	83.3	83.4	80.7	80.2	84.2	84.2	82.1	87.4			
120	84.2	82.7	80.6	81.4	82.4	77.6	78.8	79.6	79.8	78.9	78.6	78.3	82.6	81.0	79.4	81.8			
125	82.2	78.2	77.1	76.2	78.0	74.7	75.5	76.7	79.1	76.0	76.4	76.2	79.3	77.1	77.4	77.5			
130	79.7	74.2	72.4	71.6	73.5	71.4	72.1	74.0	76.9	73.4	73.2	73.0	75.9	73.2	73.1	73.9			
135	76.1	70.2	66.2	67.4	69.8	66.7	67.4	71.1	74.2	70.4	68.4	69.4	72.0	70.5	67.0	70.2			
140	71.2	65.9	60.4	59.6	65.1	59.2	61.7	67.0	70.3	66.8	62.5	62.2	68.2	64.7	60.7	66.2			
145	65.4	61.0	54.9	55.6	60.1	55.5	56.3	62.3	65.1	62.1	56.6	56.5	63.0	57.8	55.6	61.1			
150	57.6	54.2	48.5	50.2	53.9	49.7	50.2	55.8	58.6	56.1	51.1	51.9	56.9	52.6	49.8	54.2			
155	50.3	48.0	44.2	45.8	47.8	45.3	45.8	49.3	51.7	50.5	46.5	48.1	51.3	48.3	46.1	48.5			
160	43.7	42.8	40.8	41.4	42.2	40.9	41.7	43.9	44.6	44.8	43.0	44.3	45.9	43.6	42.1	43.7			
165	38.2	38.6	37.6	37.3	37.9	37.9	37.9	38.8	39.3	39.5	40.0	40.5	40.9	39.1	38.7	39.7			
170	35.0	35.7	35.6	34.8	35.9	35.5	34.9	35.0	35.5	35.6	36.4	37.7	37.4	36.0	36.4	36.5			
175	35.2	34.6	33.2	33.1	34.9	34.8	33.9	34.3	35.3	33.4	33.3	35.3	36.3	35.3	35.1	35.5			
180	36.0	34.3	33.6	33.8	35.7	34.8	35.0	35.2	36.0	34.3	33.6	33.8	35.7	34.7	35.0	35.2			

C Range: 0 - 360DEG
 C Interval: 22.5DEG
 Test Speed: HIGH
 Temperature:25.3DEG
 Operators:chen
 Test Date:2022-10-04

□ Range: 0 - 180DEG
 □ Interval: 1.0DEG
 Test System:EVERFINE GO-3000H_V1 SYSTEM V2.00.411
 Humidity:65.0%
 Test Distance:8.650m [K=1.0000]
 Remarks: