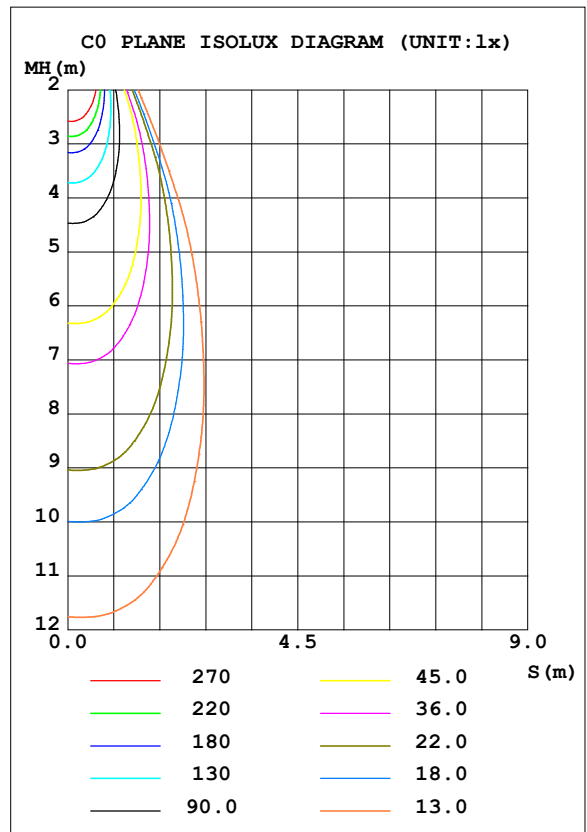
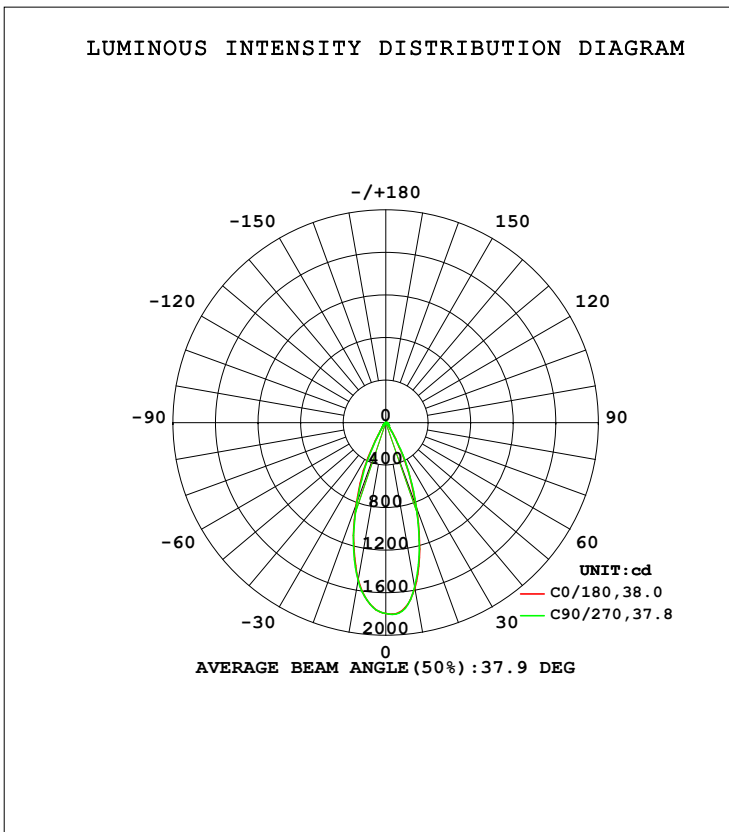


LUMINAIRE PHOTOMETRIC TEST REPORT

Test:U:120.02V I:0.1098A P:12.992W PF:0.9495 Freq:59.98Hz Lamp Flux:842.478x1 lm		
NAME: ASD-CD-CR-2D15AC-CH/WH	TYPE:	WEIGHT:
SPEC.:3000K 90	DIM.:	SERIAL No.:
MFR.: ASD Lighting Corp	SUR.:	Shielding Angle:

DATA OF LAMP		PHOTOMETRIC DATA Eff: 64.85 lm/W			
MODEL		I _{max} (cd)	1810	S/MH (C0/180)	0.62
NOMINAL POWER (W)	15	LOR (%)	100.0	S/MH (C90/270)	0.61
RATED VOLTAGE (V)	120	TOTAL FLUX (lm)	842.48	<input type="checkbox"/> UP, DN (C0-180)	0.0, 51.7
NOMINAL FLUX (lm)	842.478	CIE CLASS	DIRECT	<input type="checkbox"/> UP, DN (C180-360)	0.0, 48.3
LAMPS INSIDE	1	<input type="checkbox"/> up (%)	0.0	CIBSE SHR NOM	0.50
TEST VOLTAGE (V)	120	<input type="checkbox"/> down (%)	100.0	CIBSE SHR MAX	0.65



C Range: 0 - 360DEG
 C Interval: 22.5DEG
 Test Speed: HIGH
 Temperature: 25.3DEG
 Operators:
 Test Date: 2021-10-20

Range: 0 - 90DEG
 Interval: 1.0DEG
 Test System: EVERFINE GO-SPEX500_V1 SYSTEM V2.00.421
 Humidity: 65.0%
 Test Distance: 3.080m [K=1.0000]
 Remarks:

ZONAL FLUX DIAGRAM

ZONAL FLUX DIAGRAM:

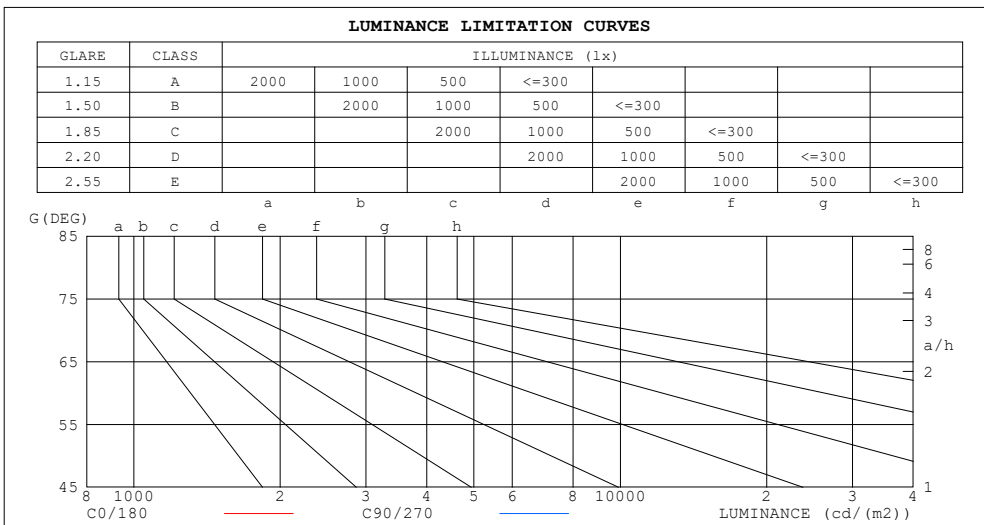
mm	C0	C45	C90	C135	C180	C225	C270	C315	mm	□ zone	□ total	%lum, lamp
10	1577	1572	1570	1541	1499	1512	1506	1526	0- 10	160.1	160.1	19,19
20	838.0	930.7	839.7	830.4	814.0	743.8	796.6	831.1	10- 20	327.5	487.6	57.9,57.9
30	219.3	291.3	232.9	218.1	201.1	166.2	176.7	218.1	20- 30	225.7	713.3	84.7,84.7
40	51.86	57.69	54.27	51.26	49.84	48.55	48.32	49.56	30- 40	62.49	775.8	92.1,92.1
50	28.80	29.87	30.09	28.83	27.76	26.71	27.00	27.74	40- 50	29.08	804.8	95.5,95.5
60	15.47	15.92	16.11	15.55	15.07	14.60	14.70	14.97	50- 60	18.63	823.5	97.7,97.7
70	8.572	8.867	8.911	8.486	8.055	7.739	7.816	8.086	60- 70	11.41	834.9	99.1,99.1
80	3.840	4.011	3.444	3.544	3.304	3.049	3.122	3.401	70- 80	6.097	841.0	99.8,99.8
90	0.0287	0.0234	0.0314	0.0217	0.0320	0.0328	0.0391	0.0323	80- 90	1.492	842.5	100,100
100									90-100			
110									100-110			
120									110-120			
130									120-130			
140									130-140			
150									140-150			
160									150-160			
170									160-170			
180									170-180			
DEG	LUMINOUS INTENSITY:cd									UNIT:lm		

C Range: 0 - 360DEG
 C Interval: 22.5DEG
 Test Speed: HIGH
 Temperature:25.3DEG
 Operators:
 Test Date:2021-10-20

□ Range: 0 - 90DEG
 □ Interval: 1.0DEG
 Test System:EVERFINE GO-SPEX500_V1 SYSTEM V2.00.421
 Humidity:65.0%
 Test Distance:3.080m [K=1.0000]
 Remarks:

LUMINANCE LIMITATION CURVES

Test:U:120.02V I:0.1098A P:12.992W PF:0.9495 Freq:59.98Hz Lamp Flux:842.478x1 lm		
NAME: ASD-CD-CR-2D15AC-CH/WH	TYPE:	WEIGHT:
SPEC.:3000K 90	DIM.:	SERIAL No.:
MFR.: ASD Lighting Corp	SUR.:	Shielding Angle:



LUMINANCE cd/(m2)		
G (DEG)	C0/180	C90/270
85	124	18
80	199	178
75	209	218
70	226	234
65	248	257
60	279	290
55	326	338
50	403	421
45	475	487

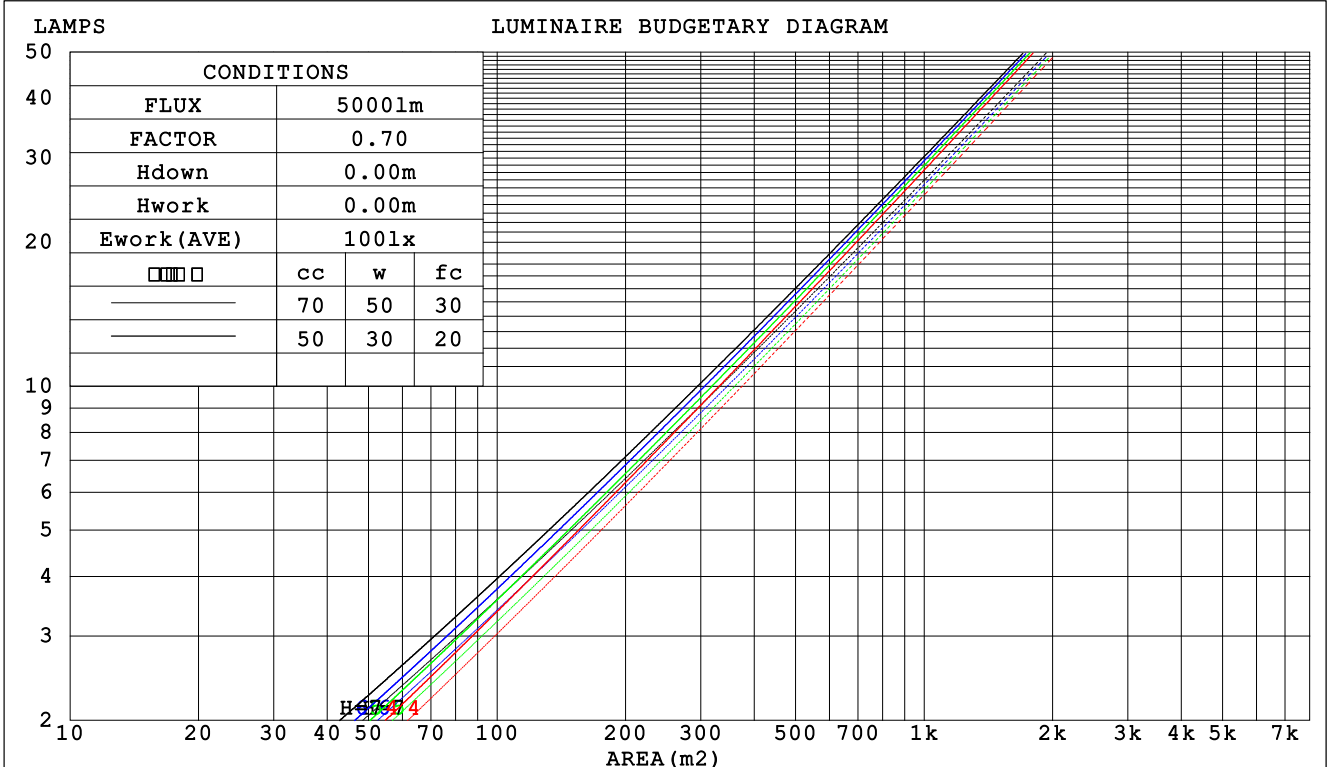
C Range: 0 - 360DEG
 C Interval: 22.5DEG
 Test Speed: HIGH
 Temperature:25.3DEG
 Operators:
 Test Date:2021-10-20

Range: 0 - 90DEG
 Interval: 1.0DEG
 Test System:EVERFINE GO-SPEX500_V1 SYSTEM V2.00.421
 Humidity:65.0%
 Test Distance:3.080m [K=1.0000]
 Remarks:

CU AND LUMINAIRE BUDGETARY ESTIMATE DIAGRAM

Test:U:120.02V I:0.1098A P:12.992W PF:0.9495 Freq:59.98Hz Lamp Flux:842.478x1 lm		
NAME: ASD-CD-CR-2D15AC-CH/WH	TYPE:	WEIGHT:
SPEC.:3000K 90	DIM.:	SERIAL No.:
MFR.: ASD Lighting Corp	SUR.:	Shielding Angle:

□cc	80%			70%			50%			30%			10%			0
□w	50%	30%	10%	50%	30%	10%	50%	30%	10%	50%	30%	10%	50%	30%	10%	0
□fc	20%			20%			20%			20%			20%			0
RCR	RCR:Room Cavity Ratio						Coefficients of Utilization(CU)									
0.0	1.19	1.19	1.19	1.16	1.16	1.16	1.11	1.11	1.11	1.06	1.06	1.06	1.02	1.02	1.02	1.00
1.0	1.11	1.09	1.07	1.09	1.07	1.05	1.05	1.03	1.02	1.01	1.00	.99	.98	.97	.96	.94
2.0	1.04	1.01	.97	1.03	.99	.96	.99	.97	.94	.96	.94	.92	.94	.92	.90	.89
3.0	.98	.94	.90	.97	.93	.89	.94	.91	.88	.92	.89	.87	.90	.87	.85	.84
4.0	.93	.88	.84	.92	.87	.84	.90	.86	.83	.88	.84	.82	.86	.83	.81	.79
5.0	.88	.83	.79	.87	.82	.79	.85	.81	.78	.84	.80	.77	.82	.79	.77	.75
6.0	.84	.79	.75	.83	.78	.74	.82	.77	.74	.80	.76	.73	.79	.76	.73	.72
7.0	.80	.75	.71	.79	.74	.71	.78	.74	.70	.77	.73	.70	.76	.72	.70	.68
8.0	.76	.71	.68	.76	.71	.67	.75	.70	.67	.74	.70	.67	.73	.69	.67	.65
9.0	.73	.68	.64	.73	.68	.64	.72	.67	.64	.71	.67	.64	.70	.66	.64	.63
10.0	.70	.65	.62	.70	.65	.62	.69	.65	.61	.68	.64	.61	.68	.64	.61	.60



C Range: 0 - 360DEG
 C Interval: 22.5DEG
 Test Speed: HIGH
 Temperature:25.3DEG
 Operators:
 Test Date:2021-10-20

□ Range: 0 - 90DEG
 □ Interval: 1.0DEG
 Test System:EVERFINE GO-SPEX500_V1 SYSTEM V2.00.421
 Humidity:65.0%
 Test Distance:3.080m [K=1.0000]
 Remarks:

WEC AND CCEC

Test:U:120.02V I:0.1098A P:12.992W PF:0.9495 Freq:59.98Hz Lamp Flux:842.478x1 lm		
NAME: ASD-CD-CR-2D15AC-CH/WH	TYPE:	WEIGHT:
SPEC.:3000K 90	DIM.:	SERIAL No.:
MFR.: ASD Lighting Corp	SUR.:	Shielding Angle:

<input type="checkbox"/> cc	80%	70%	50%	30%	10%	0
<input type="checkbox"/> w	50% 30% 10%	50% 30% 10%	50% 30% 10%	50% 30% 10%	50% 30% 10%	0
<input type="checkbox"/> fc	20%	20%	20%	20%	20%	0
RCR	RCR:Room Cavity Ratio		Wall Exitance Coefficients (WEC)			
0.0						
1.0	.168 .096 .030	.162 .092 .029	.149 .086 .027	.138 .079 .025	.127 .074 .024	
2.0	.158 .087 .027	.153 .084 .026	.142 .079 .025	.133 .074 .023	.124 .070 .022	
3.0	.149 .079 .024	.144 .077 .023	.135 .073 .022	.127 .070 .021	.119 .066 .020	
4.0	.140 .073 .021	.136 .071 .021	.129 .068 .020	.122 .065 .020	.115 .062 .019	
5.0	.133 .068 .020	.129 .066 .019	.122 .064 .019	.116 .061 .018	.111 .059 .018	
6.0	.126 .063 .018	.123 .062 .018	.117 .060 .017	.111 .058 .017	.106 .056 .017	
7.0	.119 .059 .017	.117 .058 .017	.112 .056 .016	.107 .055 .016	.103 .053 .016	
8.0	.114 .056 .016	.111 .055 .016	.107 .053 .015	.103 .052 .015	.099 .051 .015	
9.0	.109 .053 .015	.107 .052 .015	.103 .051 .014	.099 .050 .014	.095 .048 .014	
10.0	.104 .050 .014	.102 .049 .014	.099 .048 .014	.095 .047 .013	.092 .046 .013	

<input type="checkbox"/> cc	80%	70%	50%	30%	10%	0
<input type="checkbox"/> w	50% 30% 10%	50% 30% 10%	50% 30% 10%	50% 30% 10%	50% 30% 10%	0
<input type="checkbox"/> fc	20%	20%	20%	20%	20%	0
RCR	RCR:Room Cavity Ratio		Ceiling Cavity Exitance Coefficients (CCEC)			
0.0	.190 .190 .190	.163 .163 .163	.111 .111 .111	.064 .064 .064	.020 .020 .020	
1.0	.171 .157 .146	.146 .135 .125	.100 .093 .087	.057 .054 .050	.018 .017 .016	
2.0	.154 .133 .114	.132 .114 .099	.091 .079 .069	.052 .046 .040	.017 .015 .013	
3.0	.141 .113 .091	.121 .098 .079	.083 .068 .056	.048 .040 .033	.015 .013 .011	
4.0	.130 .099 .075	.112 .085 .065	.077 .059 .046	.044 .035 .027	.014 .011 .009	
5.0	.121 .087 .062	.104 .075 .054	.071 .052 .038	.041 .031 .022	.013 .010 .007	
6.0	.112 .077 .052	.097 .067 .045	.067 .047 .032	.039 .028 .019	.012 .009 .006	
7.0	.105 .069 .044	.091 .060 .038	.063 .042 .027	.036 .025 .016	.012 .008 .005	
8.0	.099 .063 .038	.085 .055 .033	.059 .038 .023	.034 .023 .014	.011 .007 .005	
9.0	.094 .058 .033	.081 .050 .029	.056 .035 .020	.033 .021 .012	.011 .007 .004	
10.0	.089 .053 .029	.077 .046 .025	.053 .032 .018	.031 .019 .011	.010 .006 .004	

C Range: 0 - 360DEG
 C Interval: 22.5DEG
 Test Speed: HIGH
 Temperature:25.3DEG
 Operators:
 Test Date:2021-10-20

Range: 0 - 90DEG
 Interval: 1.0DEG
 Test System:EVERFINE GO-SPEX500_V1 SYSTEM V2.00.421
 Humidity:65.0%
 Test Distance:3.080m [K=1.0000]
 Remarks:

UGR(Unified Glare Rating) Table

Test:U:120.02V I:0.1098A P:12.992W PF:0.9495 Freq:59.98Hz Lamp Flux:842.478x1 lm										
NAME: ASD-CD-CR-2D15AC-CH/WH					TYPE:			WEIGHT:		
SPEC.:3000K 90					DIM.:			SERIAL No.:		
MFR.: ASD Lighting Corp					SUR.:			Shielding Angle:		
ceiling/cavity	0.7	0.7	0.5	0.5	0.3	0.7	0.7	0.5	0.5	0.3
walls	0.5	0.3	0.5	0.3	0.3	0.5	0.3	0.5	0.3	0.3
working plane	0.2	0.2	0.2	0.2	0.2	0.2	0.2	0.2	0.2	0.2
Room dimensions	Viewed crosswise					Viewed endwise				
x = 2H y = 2H	4.4	5.2	4.6	5.4	5.5	4.7	5.6	4.9	5.7	5.9
3H	5.0	5.8	5.3	6.0	6.2	5.3	6.1	5.6	6.3	6.5
4H	5.3	6.1	5.6	6.3	6.5	5.6	6.4	5.9	6.6	6.8
6H	5.6	6.3	5.9	6.5	6.7	5.8	6.5	6.1	6.8	7.0
8H	5.6	6.3	5.9	6.6	6.8	5.9	6.5	6.2	6.8	7.0
12H	5.6	6.3	6.0	6.6	6.8	5.8	6.5	6.2	6.8	7.0
4H 2H	4.6	5.4	4.9	5.6	5.8	4.9	5.7	5.2	5.9	6.1
3H	5.4	6.1	5.8	6.4	6.6	5.7	6.4	6.0	6.6	6.9
4H	5.9	6.5	6.2	6.7	7.1	6.1	6.7	6.5	7.0	7.3
6H	6.2	6.8	6.6	7.1	7.4	6.4	7.0	6.8	7.3	7.6
8H	6.4	6.8	6.7	7.2	7.6	6.5	7.0	6.9	7.3	7.7
12H	6.4	6.8	6.8	7.2	7.6	6.5	6.9	6.9	7.3	7.7
8H 4H	6.0	6.5	6.4	6.8	7.2	6.2	6.7	6.6	7.1	7.4
6H	6.5	6.9	6.9	7.3	7.7	6.7	7.1	7.1	7.5	7.9
8H	6.7	7.1	7.1	7.5	7.9	6.8	7.1	7.2	7.6	8.0
12H	6.8	7.1	7.3	7.6	8.0	6.8	7.1	7.3	7.5	8.0
12H 4H	6.0	6.4	6.4	6.8	7.2	6.2	6.7	6.6	7.0	7.4
6H	6.5	6.9	7.0	7.3	7.7	6.7	7.0	7.1	7.5	7.9
8H	6.8	7.1	7.2	7.5	8.0	6.8	7.1	7.3	7.6	8.1
Variations with the observer position at spacings:										
S = 1.0H	+ 0.5 / - 0.6					+ 0.6 / - 0.7				
1.5H	+ 0.6 / - 0.4					+ 0.7 / - 0.4				
2.0H	+ 0.8 / - 0.6					+ 0.8 / - 0.6				

CIE Pub.117, 842.5 lm Total Lamp Luminous Flux Correct (8log(F/F0) = -0.6)
 Area: 0.111111 m2

C Range: 0 - 360DEG
 C Interval: 22.5DEG
 Test Speed: HIGH
 Temperature:25.3DEG
 Operators:
 Test Date:2021-10-20

Range: 0 - 90DEG
 Interval: 1.0DEG
 Test System:EVERFINE GO-SPEX500_V1 SYSTEM V2.00.421
 Humidity:65.0%
 Test Distance:3.080m [K=1.0000]
 Remarks:

UTILIZATION FACTORS TABLE

Test:U:120.02V I:0.1098A P:12.992W PF:0.9495 Freq:59.98Hz Lamp Flux:842.478x1 lm		
NAME: ASD-CD-CR-2D15AC-CH/WH	TYPE:	WEIGHT:
SPEC.:3000K 90	DIM.:	SERIAL No.:
MFR.: ASD Lighting Corp	SUR.:	Shielding Angle:

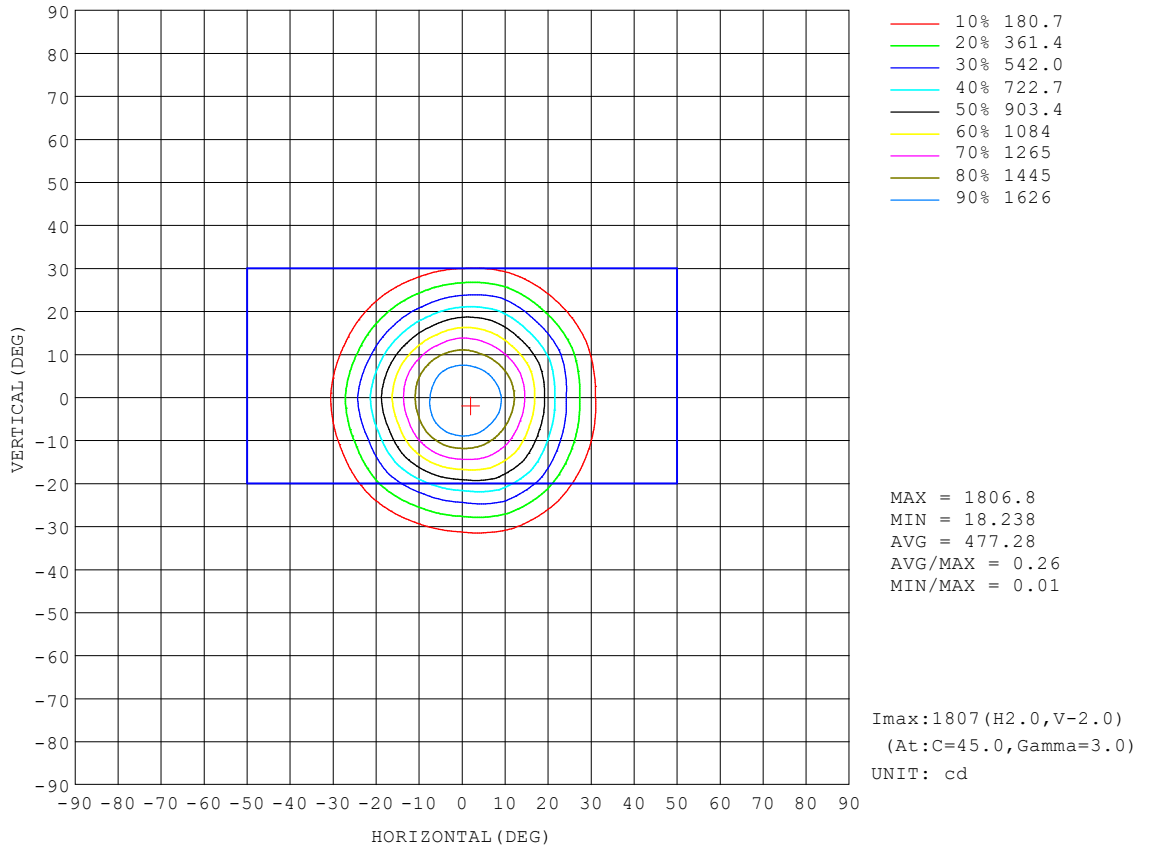
REFLECTANCE										
Ceiling	0.8	0.8	0.8	0.7	0.7	0.7	0.5	0.5	0.5	0
Walls	0.7	0.5	0.3	0.7	0.5	0.3	0.7	0.5	0.3	0
Working plane	0.2	0.2	0.2	0.2	0.2	0.2	0.2	0.2	0.2	0
ROOM INDEX	UTILIZATION FACTORS (PERCENT) $k(RI) \times RCR = 5$									
k = 0.60	87	80	76	86	80	76	85	80	76	72
0.80	94	88	84	93	88	84	92	87	84	80
1.00	99	93	89	98	92	89	96	92	88	84
1.25	103	97	94	101	97	93	99	95	92	88
1.50	105	100	97	104	100	96	102	98	95	91
2.00	108	104	100	107	103	100	104	101	98	93
2.50	110	106	103	108	105	102	105	102	100	94
3.00	111	108	105	110	106	104	106	104	102	95
4.00	114	111	108	111	109	107	108	106	104	97
5.00	115	112	111	113	111	109	109	107	106	98
ROOM INDEX	UF(total)									Direct
According to DIN EN 13032-2 2004			Suspended				SHRNOM = 1.25			

C Range: 0 - 360DEG
 C Interval: 22.5DEG
 Test Speed: HIGH
 Temperature:25.3DEG
 Operators:
 Test Date:2021-10-20

Range: 0 - 90DEG
 Interval: 1.0DEG
 Test System:EVERFINE GO-SPEX500_V1 SYSTEM V2.00.421
 Humidity:65.0%
 Test Distance:3.080m [K=1.0000]
 Remarks:

ISOCANDELA DIAGRAM

Test:U:120.02V I:0.1098A P:12.992W PF:0.9495 Freq:59.98Hz Lamp Flux:842.478x1 lm		
NAME: ASD-CD-CR-2D15AC-CH/WH	TYPE:	WEIGHT:
SPEC.:3000K 90	DIM.:	SERIAL No.:
MFR.: ASD Lighting Corp	SUR.:	Shielding Angle:

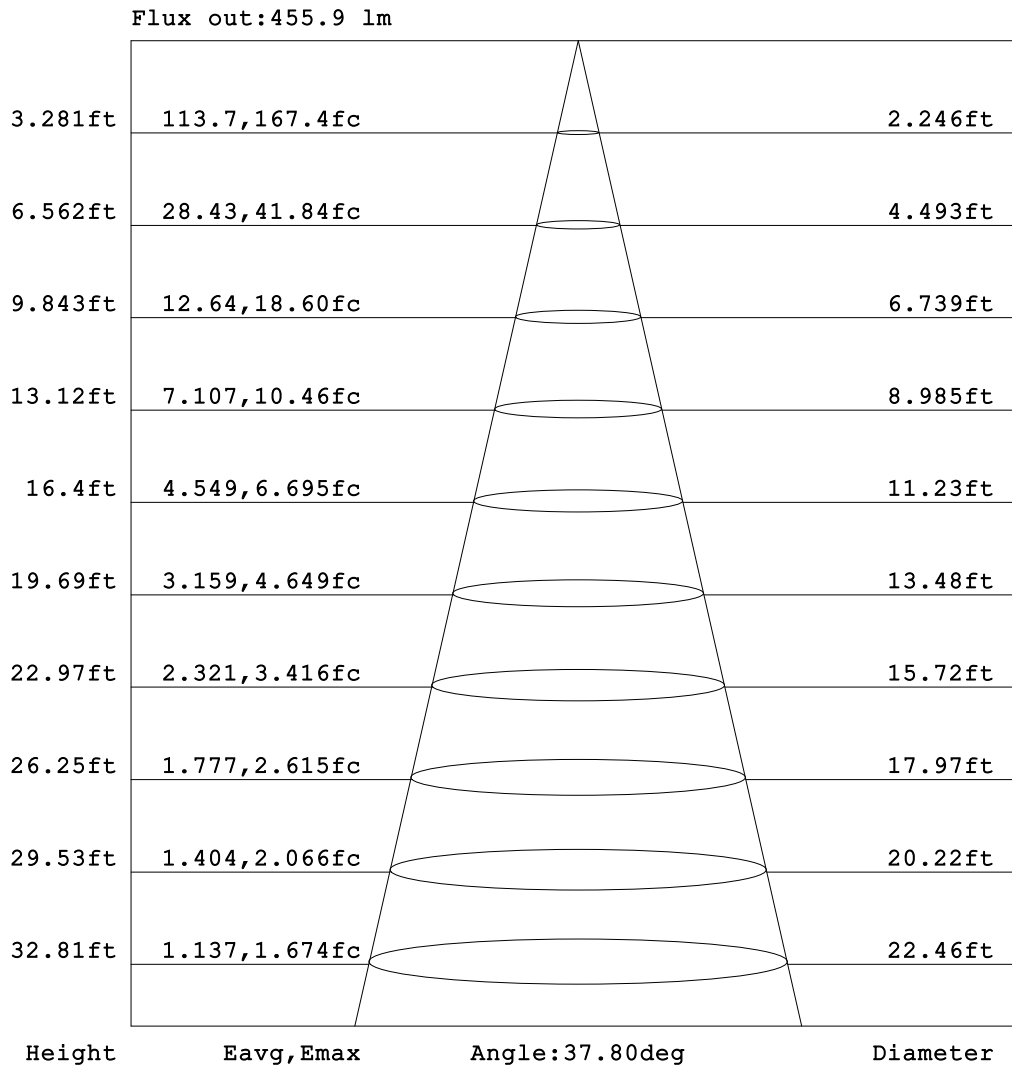


C Range: 0 - 360DEG
 C Interval: 22.5DEG
 Test Speed: HIGH
 Temperature:25.3DEG
 Operators:
 Test Date:2021-10-20

Range: 0 - 90DEG
 Interval: 1.0DEG
 Test System:EVERFINE GO-SPEX500_V1 SYSTEM V2.00.421
 Humidity:65.0%
 Test Distance:3.080m [K=1.0000]
 Remarks:

AAI Figure

Test:U:120.02V I:0.1098A P:12.992W PF:0.9495 Freq:59.98Hz Lamp Flux:842.478x1 lm		
NAME: ASD-CD-CR-2D15AC-CH/WH	TYPE:	WEIGHT:
SPEC.:3000K 90	DIM.:	SERIAL No.:
MFR.: ASD Lighting Corp	SUR.:	Shielding Angle:



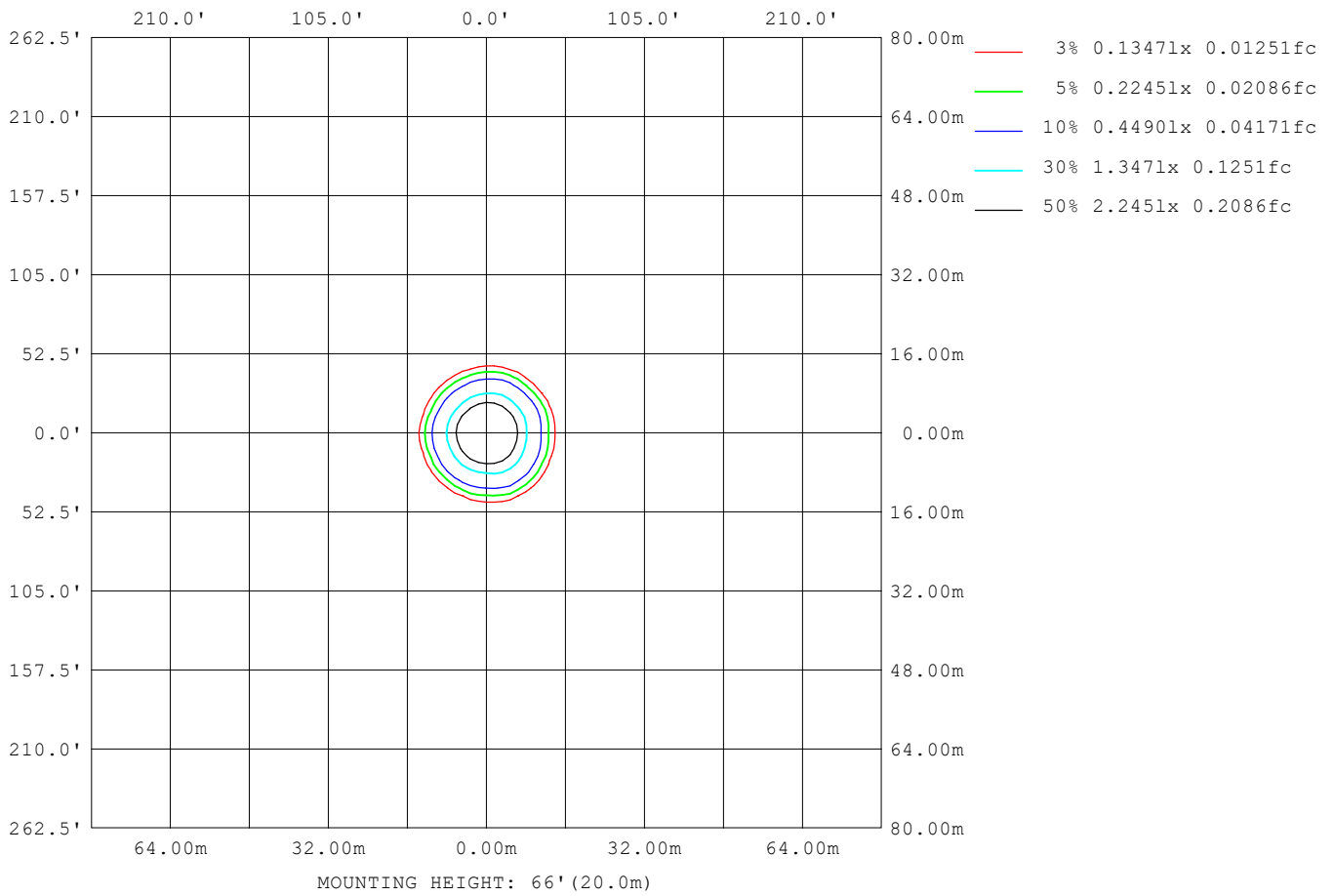
Note:The Curves indicate the illuminated area and the average illumination when the luminaire is at different distance.

C Range: 0 - 360DEG
 C Interval: 22.5DEG
 Test Speed: HIGH
 Temperature:25.3DEG
 Operators:
 Test Date:2021-10-20

Range: 0 - 90DEG
 Interval: 1.0DEG
 Test System:EVERFINE GO-SPEX500_V1 SYSTEM V2.00.421
 Humidity:65.0%
 Test Distance:3.080m [K=1.0000]
 Remarks:

ISOLUX DIAGRAM

Test:U:120.02V I:0.1098A P:12.992W PF:0.9495 Freq:59.98Hz Lamp Flux:842.478x1 lm		
NAME: ASD-CD-CR-2D15AC-CH/WH	TYPE:	WEIGHT:
SPEC.:3000K 90	DIM.:	SERIAL No.:
MFR.: ASD Lighting Corp	SUR.:	Shielding Angle:



C Range: 0 - 360DEG
 C Interval: 22.5DEG
 Test Speed: HIGH
 Temperature:25.3DEG
 Operators:
 Test Date:2021-10-20

Range: 0 - 90DEG
 Interval: 1.0DEG
 Test System:EVERFINE GO-SPEX500_V1 SYSTEM V2.00.421
 Humidity:65.0%
 Test Distance:3.080m [K=1.0000]
 Remarks:

LED Avg.L Report

Test:U:120.02V I:0.1098A P:12.992W PF:0.9495 Freq:59.98Hz Lamp Flux:842.478x1 lm		
NAME: ASD-CD-CR-2D15AC-CH/WH	TYPE:	WEIGHT:
SPEC.:3000K 90	DIM.:	SERIAL No.:
MFR.: ASD Lighting Corp	SUR.:	Shielding Angle:

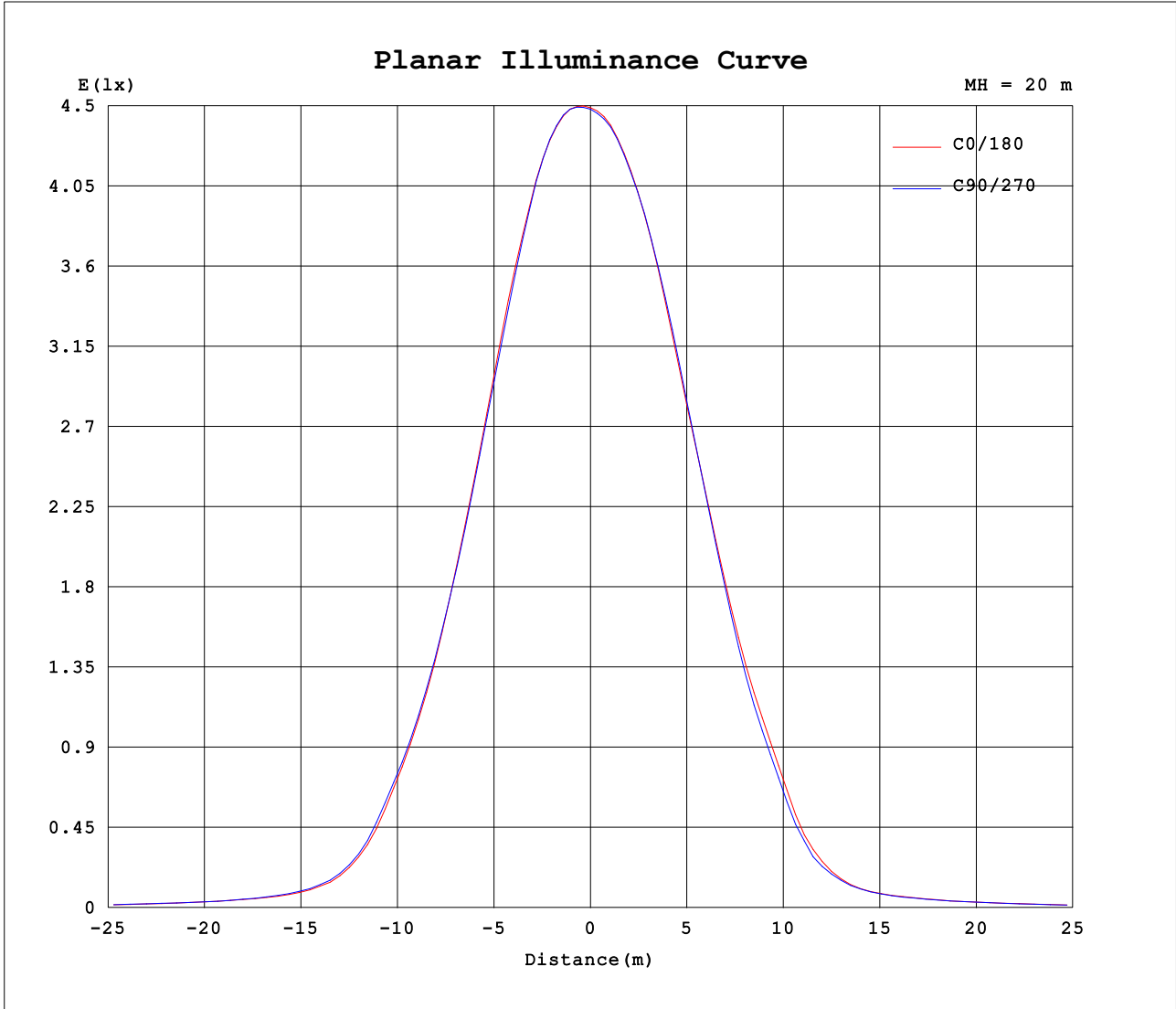
AvgL	cd/m2
L_0~180 (65) av	243
L_0~180 (75) av	200
L_0~180 (85) av	111
L_90~270 (65) av	245
L_90~270 (75) av	200
L_90~270 (85) av	65
L_45 (65) av	242
L_45 (75) av	199
L_45 (85) av	135

Standard: GB/T 29293-2012

C Range: 0 - 360DEG
 C Interval: 22.5DEG
 Test Speed: HIGH
 Temperature:25.3DEG
 Operators:
 Test Date:2021-10-20

Range: 0 - 90DEG
 Interval: 1.0DEG
 Test System:EVERFINE GO-SPEX500_V1 SYSTEM V2.00.421
 Humidity:65.0%
 Test Distance:3.080m [K=1.0000]
 Remarks:

Planar Illuminance Curve



C Range: 0 - 360DEG
 C Interval: 22.5DEG
 Test Speed: HIGH
 Temperature:25.3DEG
 Operators:
 Test Date:2021-10-20

Range: 0 - 90DEG
 Interval: 1.0DEG
 Test System:EVERFINE GO-SPEX500_V1 SYSTEM V2.00.421
 Humidity:65.0%
 Test Distance:3.080m [K=1.0000]
 Remarks:

LUMINOUS DISTRIBUTION INTENSITY DATA

Test:U:120.02V I:0.1098A P:12.992W PF:0.9495 Freq:59.98Hz Lamp Flux:842.478x1 lm		
NAME: ASD-CD-CR-2D15AC-CH/WH	TYPE:	WEIGHT:
SPEC.:3000K 90	DIM.:	SERIAL No.:
MFR.: ASD Lighting Corp	SUR.:	Shielding Angle:

Table--1

UNIT: cd

C (DEG) □ (DEG)	0	22.5	45	67.5	90	112.5	135	157.5	180	202.5	225	247.5	270	292.5	315	337.5			
0	1795	1795	1795	1795	1795	1795	1795	1795	1795	1795	1795	1795	1795	1795	1795	1795			
5	1773	1791	1792	1791	1779	1766	1746	1728	1712	1706	1712	1710	1712	1721	1738	1751			
10	1577	1583	1572	1575	1570	1564	1541	1506	1499	1505	1512	1506	1506	1504	1526	1551			
15	1232	1233	1267	1266	1222	1215	1198	1156	1171	1161	1139	1140	1178	1185	1196	1234			
20	838	865	931	924	840	830	830	790	814	772	744	745	797	839	831	864			
25	493	533	608	602	506	488	511	470	500	438	421	424	464	527	508	538			
30	219	251	291	291	233	221	218	192	201	171	166	165	177	210	218	235			
35	88.7	96.0	109	110	95.7	86.9	87.7	79.5	78.6	73.2	74.4	73.5	76.9	86.1	86.7	93.6			
40	51.9	54.3	57.7	57.3	54.3	52.2	51.3	49.5	49.8	48.8	48.6	47.5	48.3	49.0	49.6	51.2			
45	37.3	38.0	38.3	38.4	38.3	37.9	37.0	36.5	36.3	35.5	35.1	35.0	35.5	35.7	36.1	36.3			
50	28.8	29.5	29.9	30.2	30.1	29.7	28.8	28.1	27.8	27.0	26.7	26.5	27.0	27.3	27.7	27.9			
55	20.8	21.3	21.6	21.8	21.5	21.3	20.6	20.2	20.0	19.5	19.5	19.2	19.5	19.6	20.0	20.1			
60	15.5	15.8	15.9	16.2	16.1	16.0	15.5	15.2	15.1	14.7	14.6	14.5	14.7	14.7	15.0	15.0			
65	11.6	11.9	12.0	12.2	12.1	12.0	11.6	11.3	11.2	10.9	10.8	10.7	10.9	10.9	11.2	11.3			
70	8.57	8.76	8.87	8.97	8.91	8.78	8.49	8.21	8.06	7.82	7.74	7.70	7.82	7.91	8.09	8.25			
75	6.01	6.19	6.28	6.35	6.27	6.14	5.88	5.65	5.47	5.26	5.19	5.16	5.26	5.36	5.54	5.71			
80	3.84	4.01	4.01	3.74	3.44	3.42	3.54	3.48	3.30	3.11	3.05	3.02	3.12	3.23	3.40	3.58			
85	1.20	2.12	1.48	0.67	0.17	0.40	1.14	1.56	0.94	1.39	1.17	1.03	1.08	1.20	1.44	1.83			
90	0.03	0.03	0.02	0.02	0.03	0.02	0.02	0.02	0.03	0.04	0.03	0.03	0.04	0.03	0.03	0.03			

C Range: 0 - 360DEG
C Interval: 22.5DEG
Test Speed: HIGH
Temperature:25.3DEG
Operators:
Test Date:2021-10-20

□ Range: 0 - 90DEG
□ Interval: 1.0DEG
Test System:EVERFINE GO-SPEX500_V1 SYSTEM V2.00.421
Humidity:65.0%
Test Distance:3.080m [K=1.0000]
Remarks: