



# LED DOWNLIGHT RETROFIT KIT

► **DESIGN** - LED DOWNLIGHT RETROFIT KIT GIMBAL with 25° swivel lens is a perfect for sloped ceilings and directional lighting. The preinstalled TP24 and E26 connectors and spring-loaded clips make your installation quick and easy. The acrylic lens with a 95° beam angle and CRI90+ grants you even light. It is designed to operate on 120V circuits.

► **COLOR SELECTABLE** - You can choose either a 2,700K soft white, 3,000K warm white, 3,500K neutral white, 4,000K cool white, or 5,000K daylight color temperature.

► **DIMMING** - Smooth triac dimming capabilities ranging from 10% to 100% with modern LED dimmers allow you to control the look and feel of your space.

► **INSTALLATION** - This fixture is suitable for most new construction, remodeling, and shallow recessed lighting housings. It is also Wet Locations rated, making it perfect for kitchen, bathroom or any other common areas.

► **ADVANTAGES** - With a lifespan of 50,000 hours, these fixtures are made to last decades under normal operation! ASD provides a 5-year limited warranty along with UL and Energy Star certifications to guarantee top quality products and safety!

Catalog number	
Notes	
Type	



Finish:	White
	Bronze
	Black



Model	Size	Watts	Voitage	Dimmable	Lumens	CCT	Finish	Dimensions
ASD-LRK-GBR-4D10AC-WH-6PACK	4 inch	10W	120 V	TRIAC	650/771/846/860/841 lm	5CCT (2,700/3,000/3,500/4,000/5,000 K)	White	5-3/8" x 2-13/16"
ASD-LRK-GBR-4D10AC-BZ-6PACK	4 inch	10W	120 V	TRIAC	650/771/846/860/841 lm	5CCT (2,700/3,000/3,500/4,000/5,000 K)	Oil rubbed bronze	5-3/8" x 2-13/16"
ASD-LRK-GBR-4D10AC-BK-6PACK	4 inch	10W	120 V	TRIAC	650/771/846/860/841 lm	5CCT (2,700/3,000/3,500/4,000/5,000 K)	Black	5-3/8" x 2-13/16"
ASD-LRK-GBR-6D15AC-WH-6PACK	6 inch	15W	120 V	TRIAC	1,100/1,243/1,310/1,308/1,221 lm	5CCT (2,700/3,000/3,500/4,000/5,000 K)	White	7-11/16" x 3-1/16"
ASD-LRK-GBR-6D15AC-BZ-6PACK	6 inch	15W	120 V	TRIAC	1,100/1,243/1,310/1,308/1,221 lm	5CCT (2,700/3,000/3,500/4,000/5,000 K)	Oil rubbed bronze	7-11/16" x 3-1/16"
ASD-LRK-GBR-6D15AC-BK-6PACK	6 inch	15W	120 V	TRIAC	1,100/1,243/1,310/1,308/1,221 lm	5CCT (2,700/3,000/3,500/4,000/5,000 K)	Black	7-11/16" x 3-1/16"

## ORDERING INFORMATION

Model	UPC	Pcs. per carton	Carton size	Carton weight	GTIN 14
ASD-LRK-GBR-4D10AC-WH-6PACK	810050738309	2	11.2" x 10.6" x 12.6"	9.4 lbs	10810050738306
ASD-LRK-GBR-4D10AC-BZ-6PACK	810128110358	2	11.2" x 10.6" x 12.6"	9.4 lbs	10810128110355
ASD-LRK-GBR-4D10AC-BK-6PACK	819201023295	2	11.2" x 10.6" x 12.6"	9.4 lbs	10819201023292
ASD-LRK-GBR-6D15AC-WH-6PACK	810050738316	2	22" x 14.6" x 9.3"	12.8 lbs	10810050738313
ASD-LRK-GBR-6D15AC-BZ-6PACK	810128110365	2	22" x 14.6" x 9.3"	12.8 lbs	10810128110362
ASD-LRK-GBR-6D15AC-BK-6PACK	819201022823	2	22" x 14.6" x 9.3"	12.8 lbs	10819201022820

For most up-to-date spec sheets please refer to [asd-lighting.com](http://asd-lighting.com)

ASD LIGHTING CORP

E-mail: [orders@asd-lighting.com](mailto:orders@asd-lighting.com) | Web site: [www.asd-lighting.com](http://www.asd-lighting.com)





# LED DOWNLIGHT RETROFIT KIT

## PRODUCT SPECIFICATIONS:

Construction & Materials				
Housing	Aluminum			
Lens	Acrylic			
Finish	White, Oil rubbed bronze, Black			
Weight	ASD-LRK-GBR-4D10AC-WH-6PACK	3.6 lbs (1.6 kg)	ASD-LRK-GBR-6D15AC-WH-6PACK	5 lbs (2.3 kg)
	ASD-LRK-GBR-4D10AC-BZ-6PACK		ASD-LRK-GBR-6D15AC-BZ-6PACK	
	ASD-LRK-GBR-4D10AC-BK-6PACK		ASD-LRK-GBR-6D15AC-BK-6PACK	
Environmental system				
Work environment	Suitable for Wet Locations			
Operating temperature	-4°F to 104°F (-20°C to 40°C)			
L-70 Life	> 50,000 hrs			
Optical system				
Luminous flux	ASD-LRK-GBR-4D10AC-WH-6PACK	650/771/846/860/841 lm	ASD-LRK-GBR-6D15AC-WH-6PACK	1,100/1,243/1,310/1,308/1,221 lm
	ASD-LRK-GBR-4D10AC-BZ-6PACK		ASD-LRK-GBR-6D15AC-BZ-6PACK	
	ASD-LRK-GBR-4D10AC-BK-6PACK		ASD-LRK-GBR-6D15AC-BK-6PACK	
Color temperature	3,000 K			
CRI	5CCT switch (2,700/3,000/3,500/4,000/5,000 K), 3,000 K by default			
	> 90			
Electrical system				
Input voltage	120 V			
Max input current	ASD-LRK-GBR-4D10AC-WH-6PACK	0.12 A	ASD-LRK-GBR-6D15AC-WH-6PACK	0.15 A
	ASD-LRK-GBR-4D10AC-BZ-6PACK		ASD-LRK-GBR-6D15AC-BZ-6PACK	
	ASD-LRK-GBR-4D10AC-BK-6PACK		ASD-LRK-GBR-6D15AC-BK-6PACK	
Inrush current (Action time)	ASD-LRK-GBR-4D10AC-WH-6PACK	30 A (0.3 S)	ASD-LRK-GBR-6D15AC-WH-6PACK	40 A (0.3 S)
	ASD-LRK-GBR-4D10AC-BZ-6PACK		ASD-LRK-GBR-6D15AC-BZ-6PACK	
	ASD-LRK-GBR-4D10AC-BK-6PACK		ASD-LRK-GBR-6D15AC-BK-6PACK	
Off state power	0W			
Power consumption	ASD-LRK-GBR-4D10AC-WH-6PACK	10W	ASD-LRK-GBR-6D15AC-WH-6PACK	15W
	ASD-LRK-GBR-4D10AC-BZ-6PACK		ASD-LRK-GBR-6D15AC-BZ-6PACK	
	ASD-LRK-GBR-4D10AC-BK-6PACK		ASD-LRK-GBR-6D15AC-BK-6PACK	
Power factor	> 0.9			
Output voltage	ASD-LRK-GBR-4D10AC-WH-6PACK	60 V	ASD-LRK-GBR-6D15AC-WH-6PACK	90 V
	ASD-LRK-GBR-4D10AC-BZ-6PACK		ASD-LRK-GBR-6D15AC-BZ-6PACK	
	ASD-LRK-GBR-4D10AC-BK-6PACK		ASD-LRK-GBR-6D15AC-BK-6PACK	
Max output current	0.15 A			
Surge protection DM/CM	2.5 kV / 2.5 kV			
Dimming range			Regular and voluntary certifications	
10-100%			5-year limited warranty	
Dimming compatible controls			Energy Star listed	
Brand	Lutron	Leviton	UL certified E475148	
Models	DVWCL-153PH-LA	CT-600PR-WH	DSL06-1TW	
	DVW-603PGH-WH	CT-103PR-WH	DB33K1	
	CTCL-153PDH-WH	SLV-600P-WH	1A2305	
	MACL-153MR-WH	DVLV-603P-IV	6633-P	
	CTCL-153PDH-LA	DV-600P	IPL06	
	CTCL-153PR-WH	NT-1000	6683	
	MACL-153M-WH	S-603P	6674	
	DVCL-163P-WH	S-600P	6672	
	SCL-153PR-WH	4X603	6631	
	CTCL-150H-WH			
PACKAGE CONTENTS:				
Description	Q-ty			
LED Downlight Retrofit Kit	6			
Adapter (A)	6			
Box	1			



For most up-to-date spec sheets please refer to [asd-lighting.com](http://asd-lighting.com)



# LED DOWNLIGHT RETROFIT KIT

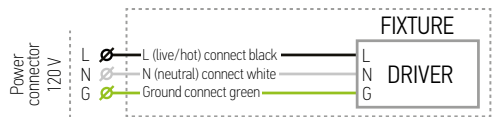
## INSTALLATION GUIDE

### IMPORTANT SAFETY INFORMATION:

Please read all the instructions below before installation.

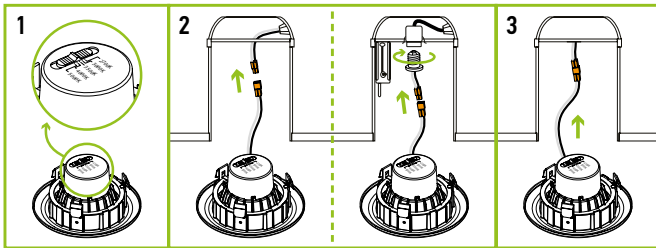
- ▶ Make sure that the supply voltage corresponds to the rated product voltage.
- ▶ The product must be installed by a qualified electrician in accordance with the National Electrical Code and corresponding local codes.
- ▶ If the product is damaged, do not use it.

### ELECTRICAL SCHEMATIC DIAGRAM:



### INSTALLATION STEPS 4":

1. Choose needed color temperature by adjusting the switch.
2. Turn off the main power and remove the existing trim and bulb from the can. Use one of the options to connect the terminals.
3. Carefully route wires into the can and gently push the fixture up into the can until sealed.



### ⚠ WARNING

**RISK OF PERSONAL INJURY – READ and follow all WARNINGS and installation instructions.** Keep or give to the owner for future reference.

**Risk of cuts:** Wear gloves to prevent cuts or abrasions when removing from carton, handling, installing, and maintaining this product.

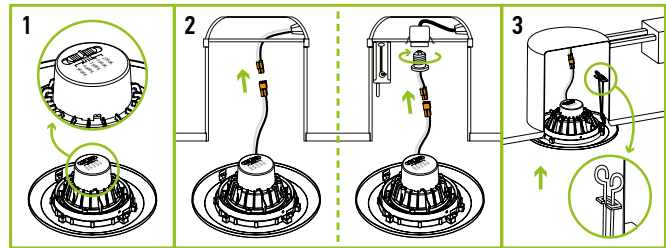
**Risk of electric shock:** This product must be installed in accordance with the applicable installation code by a person familiar with the construction and operation of the product and the hazards involved.

**Risk of Fire:** Minimum 194°F supply conductors. Consult a qualified electrician to ensure correct branch circuit conductor.

ASD® assumes no responsibility for claims arising out of improper or careless installation or handling of this product.

### INSTALLATION STEPS 6":

1. Choose needed color temperature by adjusting the switch.
2. Turn off the main power and remove the existing trim and bulb from the Can. Use one of the options to connect the terminals.
3. Squeeze the two sets of spring clip arms up toward each other. Route wires into the Can and hook both springs into the arm hook on the inside of Can. Release springs and gently push the fixture up into the Can until sealed.



For most up-to-date spec sheets please refer to [asd-lighting.com](http://asd-lighting.com)