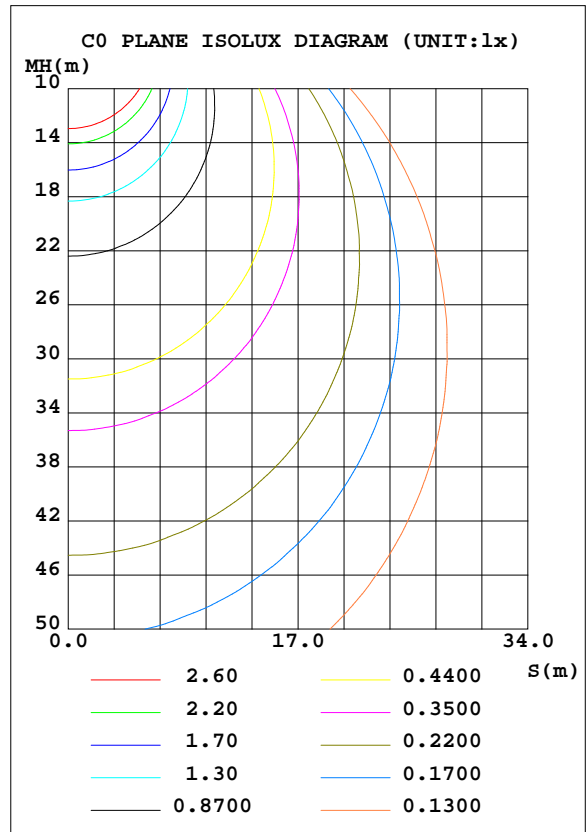
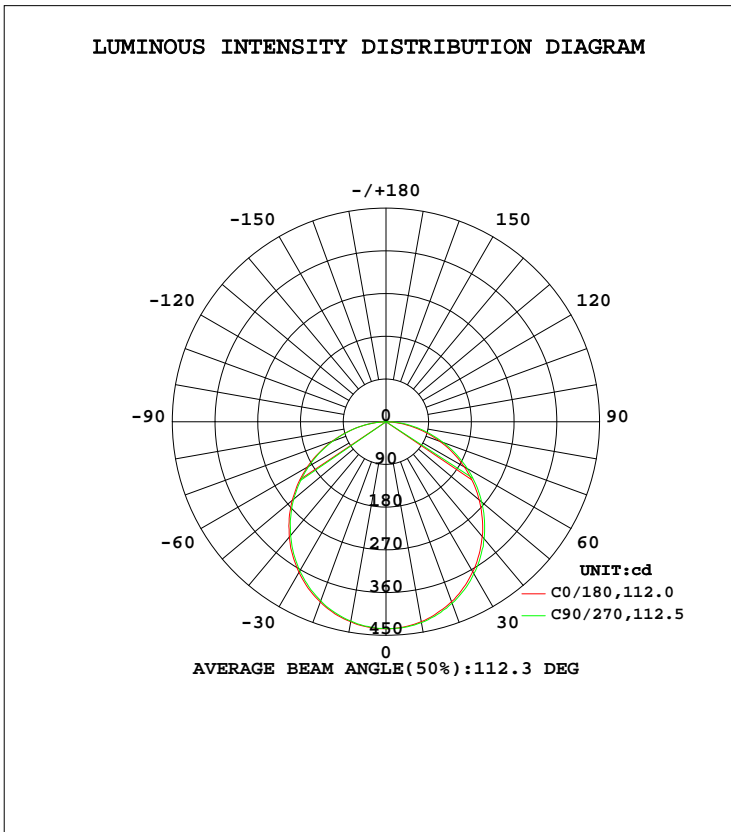


LUMINAIRE PHOTOMETRIC TEST REPORT

Test:U:120.00V I:0.1180A P:13.840W PF:0.9774 Freq:60.00Hz Lamp Flux:1251.58x1 lm		
NAME: ASD-MPR-7D15WH-EM	TYPE: N/A	WEIGHT: N/A
SPEC. 5000K	DIM.: N/A	SERIAL No.: N/A
MFR.:ASD Lighting Corp	SUR.: N/A	Shielding Angle: N/A

DATA OF LAMP		PHOTOMETRIC DATA			
MODEL	ASD-MPR-7D15WH-EM	Imax(cd)	436.5	S/MH(C0/180)	1.25
NOMINAL POWER(W)		LOR(%)	100.0	S/MH(C90/270)	1.26
RATED VOLTAGE(V)	120	TOTAL FLUX(lm)	1251.6	η UP, DN(C0-180)	0.1,49.3
NOMINAL FLUX(lm)	1251.58	CIE CLASS	DIRECT	η UP, DN(C180-360)	0.0,50.6
LAMPS INSIDE	1	η up(%)	0.1	CIBSE SHR NOM	1.25
TEST VOLTAGE(V)	120	η down(%)	99.9	CIBSE SHR MAX	1.35



C Range: 0 - 360DEG
 C Interval: 22.5DEG
 Test Speed: HIGH
 Temperature:25.0DEG
 Operators:Water
 Test Date:2024-04-29

γ Range: 0 - 180DEG
 γ Interval: 1.0DEG
 Test System:EVERFINE GO-R5000_V2 SYSTEM V2.00.446
 Humidity:41%
 Test Distance:2.519m [K=1.0000]
 Remarks:

ZONAL FLUX DIAGRAM

ZONAL FLUX DIAGRAM:

γ	C0	C45	C90	C135	C180	C225	C270	C315	γ	Φ zone	Φ total	%lum, lamp
10	427.8	426.7	426.4	425.7	427.5	428.4	429.6	429.1	0- 10	41.24	41.24	3.3,3.3
20	404.1	403.1	401.7	400.5	403.2	405.1	407.0	406.7	10- 20	117.9	159.2	12.7,12.7
30	366.6	364.9	362.9	361.5	365.2	368.2	369.8	370.3	20- 30	178.3	337.4	27,27
40	316.9	314.6	312.8	311.6	315.7	318.8	321.6	321.4	30- 40	214.4	551.8	44.1,44.1
50	258.0	255.5	253.6	252.4	256.3	260.1	263.3	262.6	40- 50	222.3	774.1	61.9,61.9
60	191.9	190.0	188.4	186.6	190.6	194.8	198.1	197.2	50- 60	201.6	975.7	78,78
70	121.0	120.7	119.3	117.3	120.7	125.2	128.2	127.1	60- 70	155.9	1132	90.4,90.4
80	51.20	51.98	51.62	48.94	51.84	57.29	60.44	58.04	70- 80	92.72	1224	97.8,97.8
90	0.1137	0.1265	0.2067	0.0893	0.1076	0.1053	0.0316	0.1459	80- 90	25.71	1250	99.9,99.9
100	0.1151	0.1297	0.1573	0.1361	0.0413	0.0575	0.0762	0.0542	90-100	0.1041	1250	99.9,99.9
110	0.1505	0.1723	0.1922	0.1782	0.0775	0.1008	0.1069	0.0941	100-110	0.1219	1250	99.9,99.9
120	0.2088	0.2333	0.2494	0.2330	0.1223	0.1389	0.1386	0.1306	110-120	0.1554	1250	99.9,99.9
130	0.3161	0.3347	0.3517	0.3368	0.1704	0.1807	0.1732	0.1732	120-130	0.1928	1251	99.9,99.9
140	0.4900	0.5284	0.5461	0.5200	0.2088	0.2184	0.2095	0.2085	130-140	0.2346	1251	99.9,99.9
150	0.6619	0.7190	0.7344	0.7058	0.2462	0.2543	0.2459	0.2488	140-150	0.2642	1251	100,100
160	0.7793	0.8048	0.8162	0.8039	0.3353	0.3210	0.2841	0.3136	150-160	0.2418	1251	100,100
170	0.7075	0.7108	0.7209	0.7188	0.4381	0.4051	0.3767	0.4163	160-170	0.1604	1252	100,100
180	0.5793	0.5428	0.5194	0.5528	0.5813	0.5444	0.5202	0.5541	170-180	0.0533	1252	100,100
DEG	LUMINOUS INTENSITY:cd									UNIT:lm		

Conical surface Flux(90deg): 663.82 lm

%lum = 53.0%
 %lamp = 53.0%

Conical surface Flux(120deg): 975.74 lm

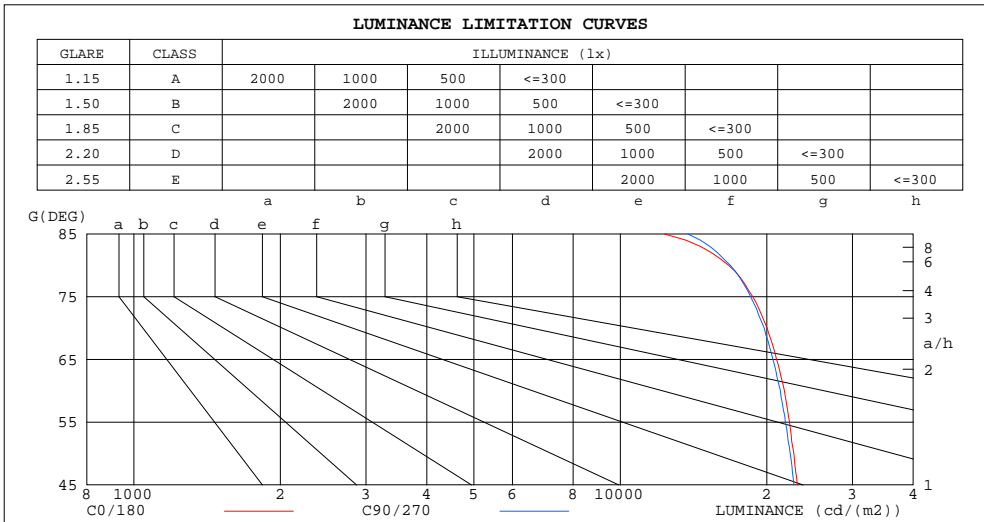
%lum = 78.0%
 %lamp = 78.0%

C Range: 0 - 360DEG
 C Interval: 22.5DEG
 Test Speed: HIGH
 Temperature:25.0DEG
 Operators:Water
 Test Date:2024-04-29

γ Range: 0 - 180DEG
 γ Interval: 1.0DEG
 Test System:EVERFINE GO-R5000_V2 SYSTEM V2.00.446
 Humidity:41%
 Test Distance:2.519m [K=1.0000]
 Remarks:

LUMINANCE LIMITATION CURVES

Test:U:120.00V I:0.1180A P:13.840W PF:0.9774 Freq:60.00Hz Lamp Flux:1251.58x1 lm		
NAME: LED Luminaire	TYPE: N/A	WEIGHT: N/A
SPEC.: ASD-MPR-7D15WH-EM 5000K	DIM.: N/A	SERIAL No.: N/A
MFR.:ASD Lighting Corp	SUR.: N/A	Shielding Angle: N/A



LUMINANCE cd/(m2)		
G (DEG)	C0/180	C90/270
85	12329	13767
80	16702	16833
75	18710	18528
70	20040	19756
65	20957	20592
60	21740	21333
55	22274	21842
50	22734	22343
45	23108	22730

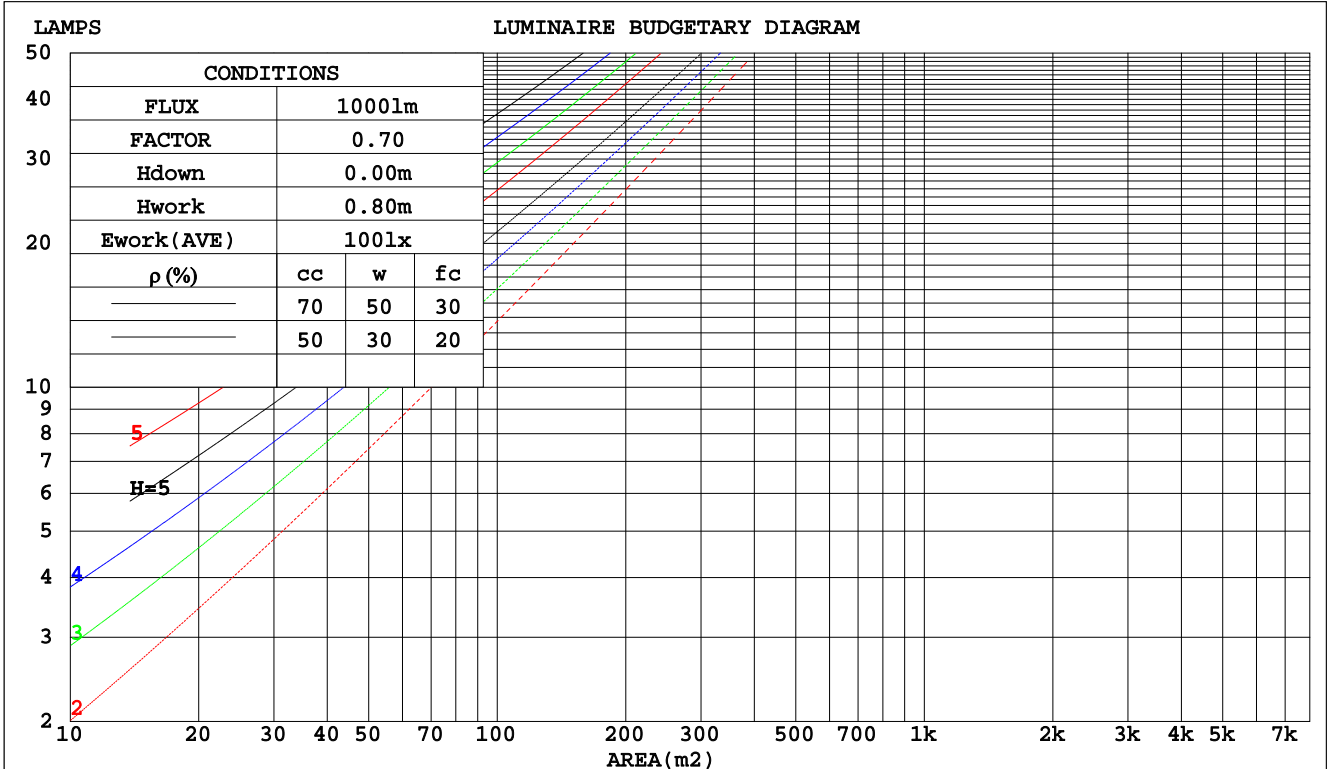
C Range: 0 - 360DEG
 C Interval: 22.5DEG
 Test Speed: HIGH
 Temperature:25.0DEG
 Operators:Water
 Test Date:2024-04-29

γ Range: 0 - 180DEG
 γ Interval: 1.0DEG
 Test System:EVERFINE GO-R5000_V2 SYSTEM V2.00.446
 Humidity:41%
 Test Distance:2.519m [K=1.0000]
 Remarks:

CU AND LUMINAIRE BUDGETARY ESTIMATE DIAGRAM

Test:U:120.00V I:0.1180A P:13.840W PF:0.9774 Freq:60.00Hz Lamp Flux:1251.58x1 lm		
NAME: LED Luminaire	TYPE: N/A	WEIGHT: N/A
SPEC.: ASD-MPR-7D15WH-EM 5000K	DIM.: N/A	SERIAL No.: N/A
MFR.: ASD Lighting Corp	SUR.: N/A	Shielding Angle: N/A

pcc	80%			70%			50%			30%			10%			0
	50%	30%	10%	50%	30%	10%	50%	30%	10%	50%	30%	10%	50%	30%	10%	0
pw																0
pfc	20%			20%			20%			20%			20%			0
RCC	RCC:Room Cavity Ratio															
	Coefficients of Utilization(CU)															
0.0	1.19	1.19	1.19	1.16	1.16	1.16	1.11	1.11	1.11	1.06	1.06	1.06	1.02	1.02	1.02	.00
1.0	1.04	.99	.95	1.01	.97	.94	.97	.94	.91	.93	.90	.88	.89	.87	.85	.83
2.0	.90	.83	.77	.88	.82	.76	.85	.79	.75	.81	.77	.73	.78	.75	.71	.69
3.0	.79	.71	.64	.77	.70	.64	.74	.68	.62	.72	.66	.61	.69	.64	.60	.58
4.0	.70	.61	.54	.69	.60	.54	.66	.59	.53	.64	.57	.52	.61	.56	.52	.49
5.0	.62	.53	.47	.61	.53	.46	.59	.52	.46	.57	.50	.45	.55	.49	.45	.43
6.0	.56	.47	.41	.55	.47	.40	.53	.46	.40	.52	.45	.40	.50	.44	.39	.37
7.0	.51	.42	.36	.50	.42	.36	.49	.41	.35	.47	.40	.35	.46	.40	.35	.33
8.0	.46	.38	.32	.46	.38	.32	.44	.37	.32	.43	.36	.31	.42	.36	.31	.29
9.0	.43	.34	.29	.42	.34	.29	.41	.34	.28	.40	.33	.28	.39	.33	.28	.26
10.0	.39	.31	.26	.39	.31	.26	.38	.31	.26	.37	.30	.26	.36	.30	.26	.24



C Range: 0 - 360DEG
 C Interval: 22.5DEG
 Test Speed: HIGH
 Temperature: 25.0DEG
 Operators: Water
 Test Date: 2024-04-29

γ Range: 0 - 180DEG
 γ Interval: 1.0DEG
 Test System: EVERFINE GO-R5000_V2 SYSTEM V2.00.446
 Humidity: 41%
 Test Distance: 2.519m [K=1.0000]
 Remarks:

WEC AND CCEC

Test:U:120.00V I:0.1180A P:13.840W PF:0.9774 Freq:60.00Hz		
Lamp Flux:1251.58x1 lm		
NAME: LED Luminaire	TYPE: N/A	WEIGHT: N/A
SPEC.: ASD-MPR-7D15WH-EM 5000K	DIM.: N/A	SERIAL No.: N/A
MFR.:ASD Lighting Corp	SUR.: N/A	Shielding Angle: N/A

ρcc	80%			70%			50%			30%			10%			0
ρw	50%	30%	10%	50%	30%	10%	50%	30%	10%	50%	30%	10%	50%	30%	10%	0
ρfc	20%			20%			20%			20%			20%			0
RCR	RCR:Room Cavity Ratio						Wall Exitance Coefficients(WEC)									
0.0																
1.0	.314	.179	.057	.307	.175	.056	.293	.168	.054	.281	.162	.052	.270	.156	.050	
2.0	.295	.161	.050	.288	.159	.049	.277	.154	.048	.266	.149	.047	.256	.145	.046	
3.0	.272	.145	.043	.267	.143	.043	.256	.139	.042	.246	.135	.041	.237	.131	.041	
4.0	.251	.130	.038	.246	.129	.038	.237	.125	.037	.228	.122	.037	.220	.120	.036	
5.0	.232	.118	.034	.227	.117	.034	.219	.114	.034	.211	.111	.033	.204	.109	.033	
6.0	.215	.108	.031	.211	.106	.031	.203	.104	.030	.197	.102	.030	.190	.100	.030	
7.0	.200	.099	.028	.196	.098	.028	.190	.096	.028	.183	.094	.027	.178	.092	.027	
8.0	.186	.091	.026	.183	.090	.025	.177	.089	.025	.172	.087	.025	.167	.086	.025	
9.0	.174	.084	.024	.172	.084	.023	.166	.082	.023	.162	.081	.023	.157	.080	.023	
10.0	.164	.079	.022	.162	.078	.022	.157	.077	.022	.152	.076	.022	.148	.074	.021	

ρcc	80%			70%			50%			30%			10%			0
ρw	50%	30%	10%	50%	30%	10%	50%	30%	10%	50%	30%	10%	50%	30%	10%	0
ρfc	20%			20%			20%			20%			20%			0
RCR	RCR:Room Cavity Ratio						Ceiling Cavity Exitance Coefficients(CCEC)									
0.0	.191	.191	.191	.164	.164	.164	.112	.112	.112	.064	.064	.064	.021	.021	.021	
1.0	.182	.157	.135	.155	.135	.116	.106	.093	.080	.061	.054	.047	.020	.017	.015	
2.0	.174	.133	.099	.149	.114	.085	.102	.079	.059	.059	.046	.035	.019	.015	.011	
3.0	.166	.115	.075	.142	.099	.065	.098	.069	.046	.056	.040	.027	.018	.013	.009	
4.0	.158	.102	.059	.136	.088	.051	.093	.061	.036	.054	.036	.021	.017	.012	.007	
5.0	.151	.092	.048	.129	.079	.042	.089	.055	.029	.052	.033	.017	.017	.011	.006	
6.0	.144	.083	.040	.123	.072	.035	.085	.050	.025	.049	.030	.015	.016	.010	.005	
7.0	.137	.076	.034	.118	.066	.030	.081	.046	.021	.047	.027	.013	.015	.009	.004	
8.0	.130	.071	.030	.112	.061	.026	.078	.043	.018	.045	.025	.011	.015	.008	.004	
9.0	.124	.066	.026	.107	.057	.023	.074	.040	.016	.043	.024	.010	.014	.008	.003	
10.0	.118	.061	.023	.102	.053	.020	.071	.037	.014	.041	.022	.009	.013	.007	.003	

C Range: 0 - 360DEG
 C Interval: 22.5DEG
 Test Speed: HIGH
 Temperature:25.0DEG
 Operators:Water
 Test Date:2024-04-29

γ Range: 0 - 180DEG
 γ Interval: 1.0DEG
 Test System:EVERFINE GO-R5000_V2 SYSTEM V2.00.446
 Humidity:41%
 Test Distance:2.519m [K=1.0000]
 Remarks:

UGR(Unified Glare Rating) Table

Test:U:120.00V I:0.1180A P:13.840W PF:0.9774 Freq:60.00Hz Lamp Flux:1251.58x1 lm		
NAME: LED Luminaire	TYPE: N/A	WEIGHT: N/A
SPEC.:ASD-MPR-7D15WH-EM 5000K	DIM.: N/A	SERIAL No.: N/A
MFR.:ASD Lighting Corp	SUR.: N/A	Shielding Angle: N/A

ceiling/cavity	0.7	0.7	0.5	0.5	0.3	0.7	0.7	0.5	0.5	0.3
walls	0.5	0.3	0.5	0.3	0.3	0.5	0.3	0.5	0.3	0.3
working plane	0.2	0.2	0.2	0.2	0.2	0.2	0.2	0.2	0.2	0.2
Room dimensions	Viewed crosswise					Viewed endwise				
x = 2H y = 2H	22.9	24.4	23.1	24.6	24.8	22.8	24.3	23.0	24.5	24.7
3H	24.4	25.8	24.7	26.1	26.3	24.3	25.7	24.6	26.0	26.2
4H	25.0	26.4	25.3	26.6	26.9	25.0	26.3	25.3	26.6	26.8
6H	25.5	26.7	25.8	27.0	27.3	25.4	26.7	25.8	27.0	27.2
8H	25.6	26.8	26.0	27.1	27.4	25.6	26.8	25.9	27.1	27.4
12H	25.7	26.9	26.0	27.1	27.5	25.6	26.8	26.0	27.1	27.4
4H 2H	23.5	24.8	23.8	25.1	25.3	23.4	24.8	23.7	25.0	25.3
3H	25.2	26.4	25.6	26.7	27.0	25.1	26.3	25.5	26.6	26.9
4H	26.0	27.0	26.3	27.4	27.7	25.9	27.0	26.3	27.3	27.7
6H	26.5	27.5	26.9	27.9	28.2	26.5	27.5	26.9	27.8	28.2
8H	26.7	27.6	27.1	28.0	28.4	26.7	27.6	27.1	28.0	28.4
12H	26.8	27.6	27.3	28.0	28.4	26.8	27.7	27.3	28.0	28.5
8H 4H	26.2	27.1	26.7	27.5	27.9	26.2	27.1	26.6	27.5	27.9
6H	27.0	27.7	27.4	28.1	28.6	26.9	27.7	27.4	28.1	28.5
8H	27.2	27.9	27.7	28.3	28.8	27.2	27.9	27.7	28.3	28.8
12H	27.4	28.0	27.9	28.4	28.9	27.4	28.0	27.9	28.5	28.9
12H 4H	26.3	27.1	26.7	27.5	27.9	26.2	27.0	26.6	27.4	27.8
6H	27.0	27.7	27.5	28.1	28.6	27.0	27.7	27.5	28.1	28.6
8H	27.3	27.9	27.8	28.4	28.8	27.3	27.9	27.8	28.4	28.8
Variations with the observer position at spacings(CIE Pub.117):										
S = 1.0H	+ 0.1 / - 0.2					+ 0.1 / - 0.2				
1.5H	+ 0.2 / - 0.3					+ 0.2 / - 0.3				
2.0H	+ 0.2 / - 0.3					+ 0.1 / - 0.3				

CIE Pub.117, 1252 lm Total Lamp Luminous Flux Correct (8log(F/F0) = 0.8)
Area: 0.0176625 m2

C Range: 0 - 360DEG	γ Range: 0 - 180DEG
C Interval: 22.5DEG	γ Interval: 1.0DEG
Test Speed: HIGH	Test System:EVERFINE GO-R5000_V2 SYSTEM V2.00.446
Temperature:25.0DEG	Humidity:41%
Operators:Water	Test Distance:2.519m [K=1.0000]
Test Date:2024-04-29	Remarks:

UTILIZATION FACTORS TABLE

Test:U:120.00V I:0.1180A P:13.840W PF:0.9774 Freq:60.00Hz Lamp Flux:1251.58x1 lm		
NAME: LED Luminaire	TYPE: N/A	WEIGHT: N/A
SPEC.:ASD-MPR-7D15WH-EM 5000K	DIM.: N/A	SERIAL No.: N/A
MFR.:ASD Lighting Corp	SUR.: N/A	Shielding Angle: N/A

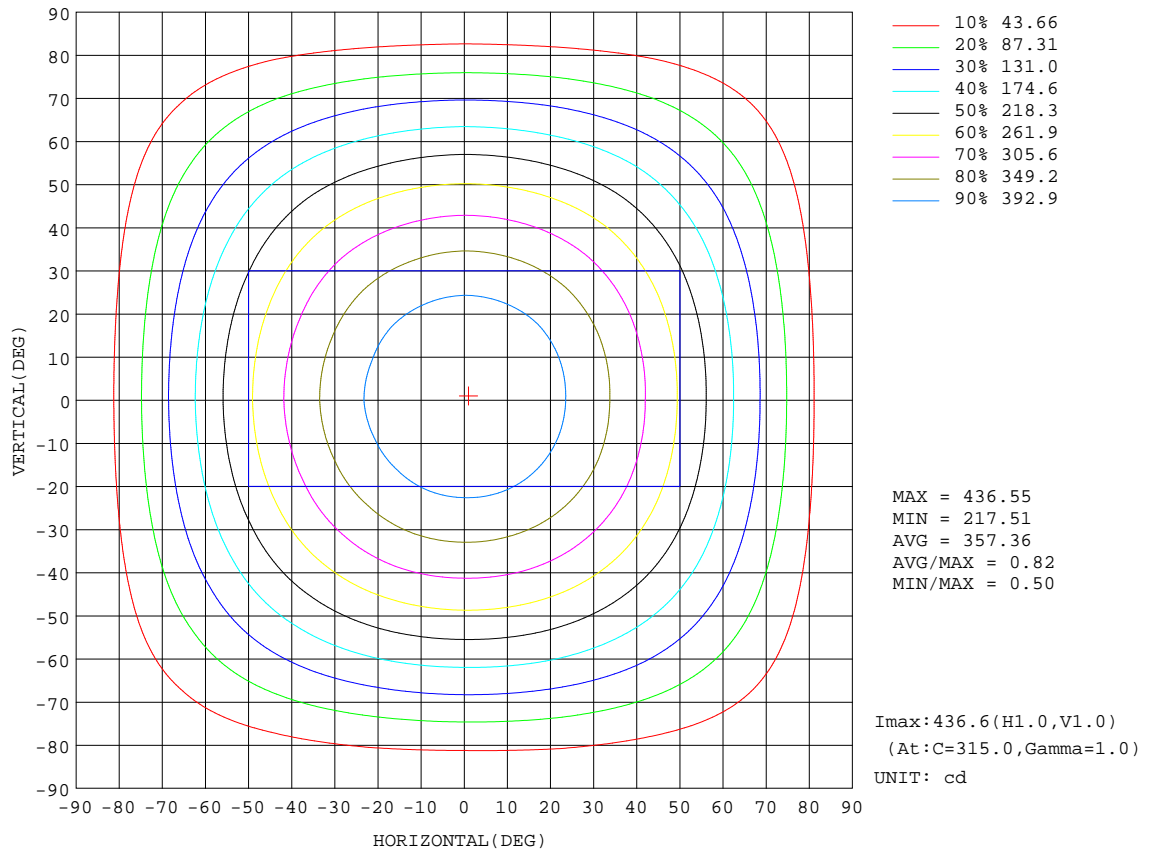
REFLECTANCE										
Ceiling	0.8	0.8	0.8	0.7	0.7	0.7	0.5	0.5	0.5	0
Walls	0.7	0.5	0.3	0.7	0.5	0.3	0.7	0.5	0.3	0
Working plane	0.2	0.2	0.2	0.2	0.2	0.2	0.2	0.2	0.2	0
ROOM INDEX	UTILIZATION FACTORS(PERCENT) $k(RI) \times RCR = 5$									
k = 0.60	57	46	39	57	45	38	55	45	38	32
0.80	67	56	48	66	55	48	64	54	48	41
1.00	76	64	57	74	64	57	72	65	56	49
1.25	83	72	65	81	71	65	79	70	64	56
1.50	88	78	71	86	77	70	83	75	69	61
2.00	95	86	79	93	85	79	89	83	77	69
2.50	99	91	85	97	89	84	93	87	82	73
3.00	102	95	89	100	93	88	96	90	86	78
4.00	106	100	96	104	98	94	99	95	91	82
5.00	108	104	99	106	102	98	101	98	95	86
ROOM INDEX	UF(total)									Direct
According to DIN EN 13032-2 2004			Suspended				SHRNOM = 1.25			

C Range: 0 - 360DEG
 C Interval: 22.5DEG
 Test Speed: HIGH
 Temperature:25.0DEG
 Operators:Water
 Test Date:2024-04-29

γ Range: 0 - 180DEG
 γ Interval: 1.0DEG
 Test System:EVERFINE GO-R5000_V2 SYSTEM V2.00.446
 Humidity:41%
 Test Distance:2.519m [K=1.0000]
 Remarks:

ISOCANDELA DIAGRAM

Test:U:120.00V I:0.1180A P:13.840W PF:0.9774 Freq:60.00Hz Lamp Flux:1251.58x1 lm		
NAME: LED Luminaire	TYPE: N/A	WEIGHT: N/A
SPEC.:ASD-MPR-7D15WH-EM 5000K	DIM.: N/A	SERIAL No.: N/A
MFR.:ASD Lighting Corp	SUR.: N/A	Shielding Angle: N/A



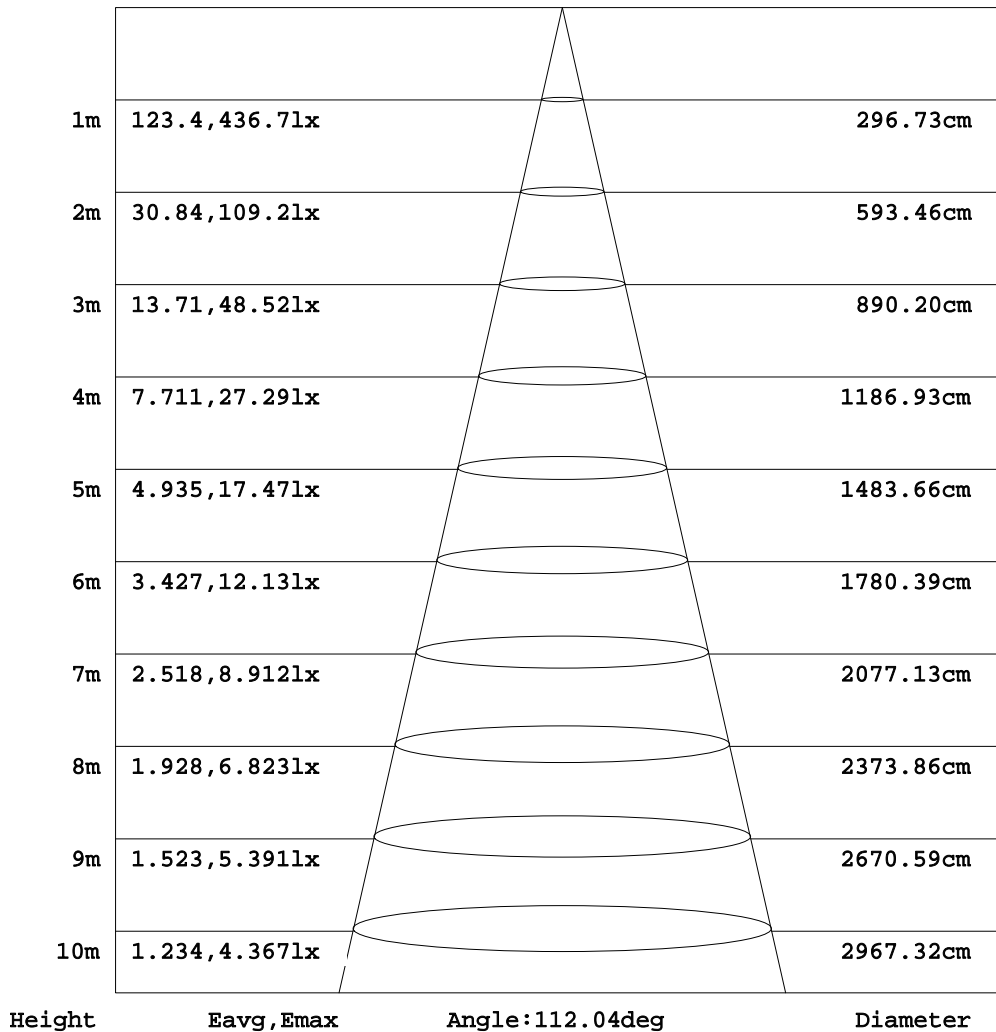
C Range: 0 - 360DEG
 C Interval: 22.5DEG
 Test Speed: HIGH
 Temperature: 25.0DEG
 Operators: Water
 Test Date: 2024-04-29

γ Range: 0 - 180DEG
 γ Interval: 1.0DEG
 Test System: EVERFINE GO-R5000_V2 SYSTEM V2.00.446
 Humidity: 41%
 Test Distance: 2.519m [K=1.0000]
 Remarks:

AAI Figure

Test:U:120.00V I:0.1180A P:13.840W PF:0.9774 Freq:60.00Hz Lamp Flux:1251.58x1 lm		
NAME: LED Luminaire	TYPE: N/A	WEIGHT: N/A
SPEC.: ASD-MPR-7D15WH-EM 5000K	DIM.: N/A	SERIAL No.: N/A
MFR.:ASD Lighting Corp	SUR.: N/A	Shielding Angle: N/A

Flux out:919.0 lm



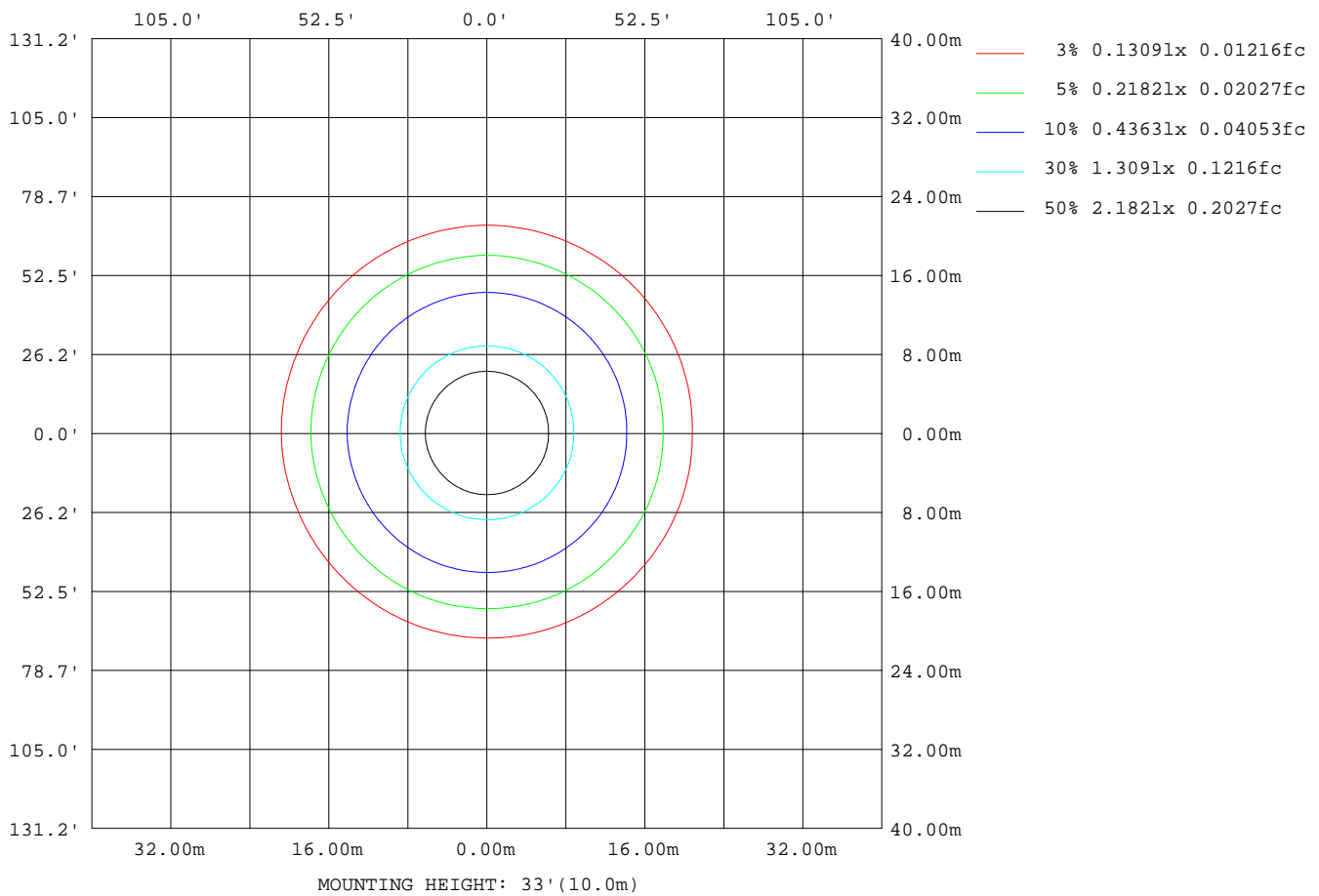
Note:The Curves indicate the illuminated area and the average illumination when the luminaire is at different distance.

C Range: 0 - 360DEG
 C Interval: 22.5DEG
 Test Speed: HIGH
 Temperature:25.0DEG
 Operators:Water
 Test Date:2024-04-29

γ Range: 0 - 180DEG
 γ Interval: 1.0DEG
 Test System:EVERFINE GO-R5000_V2 SYSTEM V2.00.446
 Humidity:41%
 Test Distance:2.519m [K=1.0000]
 Remarks:

ISOLUX DIAGRAM

Test:U:120.00V I:0.1180A P:13.840W PF:0.9774 Freq:60.00Hz Lamp Flux:1251.58x1 lm		
NAME: LED Luminaire	TYPE: N/A	WEIGHT: N/A
SPEC.:ASD-MPR-7D15WH-EM 5000K	DIM.: N/A	SERIAL No.: N/A
MFR.:ASD Lighting Corp	SUR.: N/A	Shielding Angle: N/A



C Range: 0 - 360DEG
 C Interval: 22.5DEG
 Test Speed: HIGH
 Temperature:25.0DEG
 Operators:Water
 Test Date:2024-04-29

γ Range: 0 - 180DEG
 γ Interval: 1.0DEG
 Test System:EVERFINE GO-R5000_V2 SYSTEM V2.00.446
 Humidity:41%
 Test Distance:2.519m [K=1.0000]
 Remarks:

LED Avg.L Report

Test:U:120.00V I:0.1180A P:13.840W PF:0.9774 Freq:60.00Hz Lamp Flux:1251.58x1 lm		
NAME: LED Luminaire	TYPE: N/A	WEIGHT: N/A
SPEC.:ASD-MPR-7D15WH-EM 5000K	DIM.: N/A	SERIAL No.: N/A
MFR.:ASD Lighting Corp	SUR.: N/A	Shielding Angle: N/A

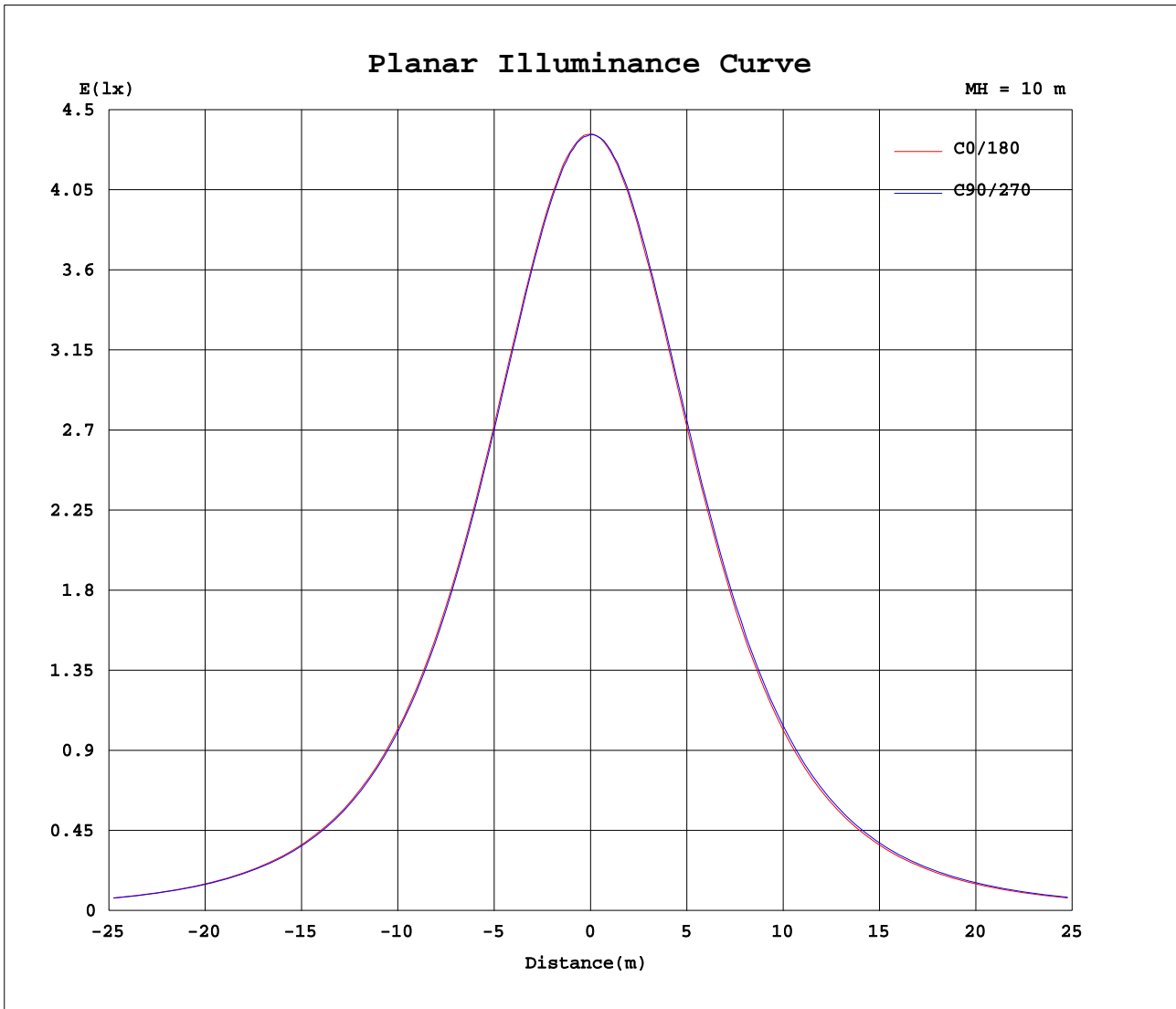
AvgL	cd/m2
L_0~180(65)av	20952
L_0~180(75)av	18765
L_0~180(85)av	12703
L_90~270(65)av	21266
L_90~270(75)av	19510
L_90~270(85)av	16350
L_45(65)av	21159
L_45(75)av	19240
L_45(85)av	14365

Standard: GB/T 29293-2012

C Range: 0 - 360DEG
 C Interval: 22.5DEG
 Test Speed: HIGH
 Temperature:25.0DEG
 Operators:Water
 Test Date:2024-04-29

γ Range: 0 - 180DEG
 γ Interval: 1.0DEG
 Test System:EVERFINE GO-R5000_V2 SYSTEM V2.00.446
 Humidity:41%
 Test Distance:2.519m [K=1.0000]
 Remarks:

Planar Illuminance Curve



C Range: 0 - 360DEG
 C Interval: 22.5DEG
 Test Speed: HIGH
 Temperature: 25.0DEG
 Operators: Water
 Test Date: 2024-04-29

γ Range: 0 - 180DEG
 γ Interval: 1.0DEG
 Test System: EVERFINE GO-R5000_V2 SYSTEM V2.00.446
 Humidity: 41%
 Test Distance: 2.519m [K=1.0000]
 Remarks:

LUMINOUS DISTRIBUTION INTENSITY DATA

Test:U:120.00V I:0.1180A P:13.840W PF:0.9774 Freq:60.00Hz Lamp Flux:1251.58x1 lm		
NAME: LED Luminaire	TYPE: N/A	WEIGHT: N/A
SPEC.:ASD-MPR-7D15WH-EM 5000K	DIM.: N/A	SERIAL No.: N/A
MFR.: ASD Lighting Corp	SUR.: N/A	Shielding Angle: N/A

Table--1

UNIT: cd

C(DEG) γ (DEG)	0	22.5	45	67.5	90	112.5	135	157.5	180	202.5	225	247.5	270	292.5	315	337.5			
0	436	436	436	436	436	436	436	436	436	436	436	436	436	436	436	436			
5	434	435	434	434	433	433	433	433	434	435	434	435	435	435	435	434			
10	428	428	427	427	426	426	426	427	428	428	428	429	430	430	429	429			
15	418	418	417	417	416	415	415	416	417	418	418	420	420	419	420	419			
20	404	405	403	402	402	401	400	401	403	405	405	407	407	407	407	406			
25	388	388	386	385	384	383	383	384	386	387	388	390	391	390	390	389			
30	367	367	365	364	363	362	362	363	365	367	368	370	370	370	370	369			
35	343	343	341	341	339	338	338	339	342	343	345	347	347	347	347	346			
40	317	317	315	314	313	312	312	313	316	317	319	321	322	321	321	320			
45	288	289	286	286	284	283	282	283	287	288	291	292	294	293	293	291			
50	258	258	255	256	254	252	252	253	256	258	260	262	263	262	263	261			
55	226	226	224	223	221	221	220	220	224	225	228	230	231	231	231	229			
60	192	192	190	190	188	187	187	187	191	192	195	197	198	197	197	195			
65	156	157	156	156	154	153	152	153	156	157	161	162	164	163	163	161			
70	121	121	121	120	119	118	117	117	121	123	125	127	128	128	127	125			
75	85.5	85.8	85.9	86.1	84.7	83.7	82.9	82.5	86.1	88.0	91.0	92.8	93.7	93.5	92.0	89.6			
80	51.2	51.8	52.0	53.1	51.6	51.1	48.9	48.7	51.8	53.6	57.3	59.3	60.4	59.6	58.0	55.1			
85	19.0	20.2	20.1	22.3	21.2	20.5	17.5	17.3	20.1	21.0	25.0	27.5	29.1	27.7	25.8	22.6			
90	0.11	0.12	0.13	0.09	0.21	0.09	0.09	0.08	0.11	0.12	0.11	3.34	0.03	3.40	0.15	0.23			
95	0.10	0.10	0.10	0.11	0.12	0.11	0.11	0.10	0.03	0.03	0.03	0.03	0.03	0.03	0.03	0.03			
100	0.12	0.12	0.13	0.15	0.16	0.15	0.14	0.12	0.04	0.04	0.06	0.08	0.08	0.07	0.05	0.04			
105	0.13	0.14	0.15	0.17	0.17	0.17	0.16	0.14	0.06	0.06	0.08	0.09	0.09	0.09	0.07	0.06			
110	0.15	0.15	0.17	0.19	0.19	0.19	0.18	0.16	0.08	0.08	0.10	0.11	0.11	0.11	0.09	0.08			
115	0.18	0.18	0.20	0.21	0.22	0.21	0.20	0.18	0.10	0.10	0.12	0.13	0.12	0.13	0.11	0.10			
120	0.21	0.22	0.23	0.24	0.25	0.25	0.23	0.22	0.12	0.13	0.14	0.15	0.14	0.14	0.13	0.12			
125	0.26	0.25	0.28	0.29	0.29	0.29	0.28	0.26	0.15	0.15	0.16	0.17	0.16	0.16	0.16	0.14			
130	0.32	0.32	0.33	0.35	0.35	0.35	0.34	0.31	0.17	0.17	0.18	0.19	0.17	0.18	0.17	0.17			
135	0.38	0.39	0.41	0.42	0.43	0.42	0.41	0.38	0.19	0.19	0.20	0.21	0.20	0.20	0.19	0.19			
140	0.49	0.50	0.53	0.53	0.55	0.54	0.52	0.48	0.21	0.20	0.22	0.22	0.21	0.21	0.21	0.21			
145	0.58	0.60	0.64	0.65	0.66	0.64	0.62	0.57	0.23	0.21	0.23	0.24	0.23	0.23	0.22	0.23			
150	0.66	0.70	0.72	0.73	0.73	0.73	0.71	0.66	0.25	0.24	0.25	0.25	0.25	0.24	0.25	0.27			
155	0.75	0.78	0.78	0.80	0.82	0.80	0.77	0.75	0.28	0.29	0.28	0.28	0.26	0.27	0.28	0.30			
160	0.78	0.79	0.80	0.83	0.82	0.83	0.80	0.77	0.34	0.32	0.32	0.31	0.28	0.30	0.31	0.34			
165	0.76	0.76	0.77	0.78	0.79	0.79	0.78	0.76	0.39	0.37	0.37	0.36	0.33	0.33	0.37	0.39			
170	0.71	0.71	0.71	0.71	0.72	0.71	0.72	0.72	0.44	0.42	0.41	0.40	0.38	0.38	0.42	0.43			
175	0.67	0.66	0.66	0.64	0.63	0.64	0.65	0.67	0.50	0.49	0.46	0.45	0.43	0.46	0.48	0.50			
180	0.58	0.56	0.54	0.52	0.52	0.53	0.55	0.56	0.58	0.56	0.54	0.53	0.52	0.53	0.55	0.57			

C Range: 0 - 360DEG
 C Interval: 22.5DEG
 Test Speed: HIGH
 Temperature:25.0DEG
 Operators:Water
 Test Date:2024-04-29

γ Range: 0 - 180DEG
 γ Interval: 1.0DEG
 Test System:EVERFINE GO-R5000_V2 SYSTEM V2.00.446
 Humidity:41%
 Test Distance:2.519m [K=1.0000]
 Remarks: