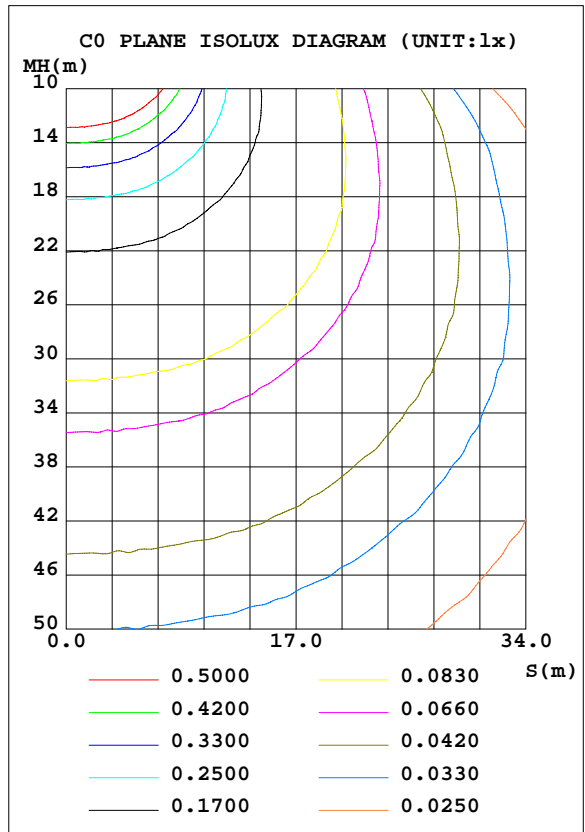
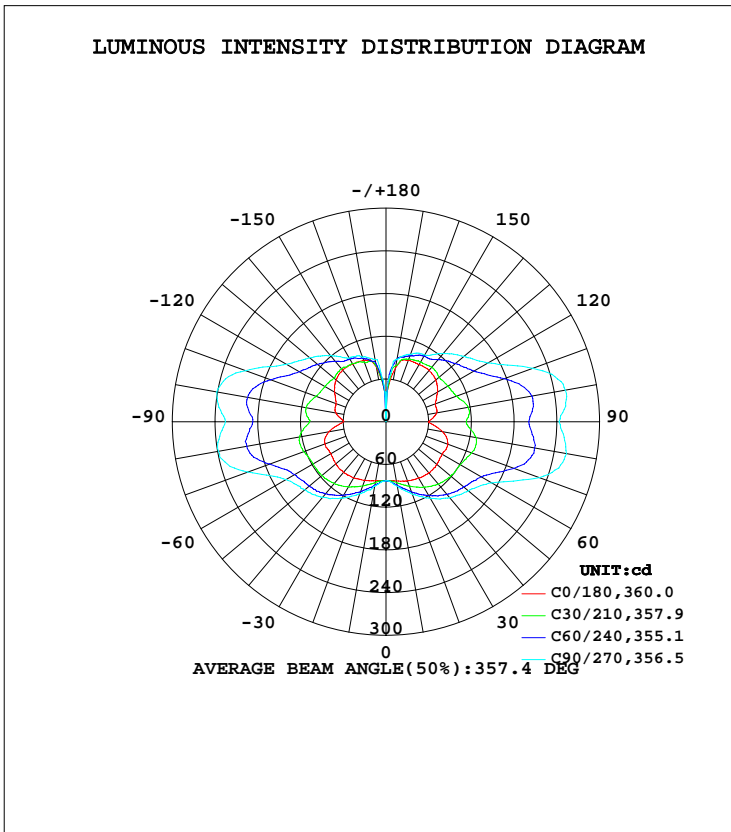


LUMINAIRE PHOTOMETRIC TEST REPORT

Test:U:277.00V I:0.0792A P:18.310W PF:0.8345 Freq:60.00Hz Lamp Flux:1636.84x1 lm		
NAME:	TYPE:LED	WEIGHT:
SPEC.:	DIM.:	SERIAL No.:
MFR.: ASD Lighting corp	SUR.:	Shielding Angle:

DATA OF LAMP		PHOTOMETRIC DATA Eff: 89.40 lm/W			
MODEL	ASD-LWS27-MV-18D18CC-BK	I _{max} (cd)	257.5	S/MH(C0/180)	1.69
NOMINAL POWER(W)	18	LOR(%)	100.0	S/MH(C90/270)	2.32
RATED VOLTAGE(V)	120-277	TOTAL FLUX(lm)	1636.8	η UP, DN(C0-180)	24.4, 26.4
NOMINAL FLUX(lm)	1636.84	CIE CLASS	DIFFUSE	η UP, DN(C180-360)	23.6, 25.5
LAMPS INSIDE	1	η up(%)	48.0	CIBSE SHR NOM	2.00
TEST VOLTAGE(V)	277	η down(%)	52.0	CIBSE SHR MAX	2.00



C Range: 0 - 360DEG
 C Interval: 15.0DEG
 Test Speed: HIGH
 Temperature: 25.0DEG
 Operators: Alan Wang
 Test Date: 08 May 2023

γ Range: 0 - 180DEG
 γ Interval: 1.0DEG
 Test System: EVERFINE GO-R5000_V2 SYSTEM V2.00.416
 Humidity: 42.1%
 Test Distance: 2.500m [K=1.0390]
 Remarks:

ZONAL FLUX DIAGRAM

ZONAL FLUX DIAGRAM:

γ	C0	C45	C90	C135	C180	C225	C270	C315	γ	Φ zone	Φ total	%lum,lamp
10	84.46	88.73	92.40	88.35	84.22	89.04	91.85	88.32	0- 10	8.183	8.183	0.50,0.50
20	88.24	101.3	108.4	100.1	87.52	101.0	107.7	100.5	10- 20	26.73	34.91	2.13,2.13
30	91.29	114.2	124.2	112.5	90.96	113.3	123.8	112.7	20- 30	48.76	83.67	5.11,5.11
40	93.56	125.2	139.5	123.3	93.13	123.7	138.3	123.0	30- 40	72.87	156.5	9.56,9.56
50	93.40	132.2	151.1	129.5	92.36	130.2	148.9	128.6	40- 50	96.02	252.6	15.4,15.4
60	91.10	137.8	172.0	134.3	89.59	134.2	162.4	131.5	50- 60	116.0	368.6	22.5,22.5
70	92.36	155.9	229.4	149.9	91.38	145.5	206.7	142.5	60- 70	140.9	509.5	31.1,31.1
80	80.68	167.5	257.5	159.0	81.27	158.0	239.0	151.6	70- 80	170.5	679.9	41.5,41.5
90	59.91	154.9	243.0	146.2	59.68	145.8	225.5	137.6	80- 90	170.5	850.4	52,52
100	72.14	159.5	255.6	152.5	71.25	153.4	241.3	143.8	90-100	168.2	1019	62.2,62.2
110	74.18	138.2	219.5	135.2	74.69	136.4	209.9	128.1	100-110	159.3	1178	72,72
120	83.62	121.6	165.3	120.0	83.38	120.0	161.4	114.9	110-120	127.7	1306	79.8,79.8
130	91.46	112.7	143.2	112.2	91.38	110.9	140.0	107.4	120-130	104.6	1410	86.2,86.2
140	94.15	103.4	125.3	102.6	94.88	100.4	122.1	98.13	130-140	84.93	1495	91.3,91.3
150	92.70	102.9	108.6	101.1	93.76	98.68	103.5	98.65	140-150	64.28	1559	95.3,95.3
160	91.94	95.96	101.0	94.51	92.02	91.48	96.61	95.70	150-160	45.12	1605	98,98
170	76.51	85.05	88.98	81.35	77.59	77.97	88.78	88.33	160-170	25.74	1630	99.6,99.6
180	43.73	36.31	0	34.36	45.05	38.27	13.74	31.59	170-180	6.536	1637	100,100
DEG	LUMINOUS INTENSITY:cd									UNIT:lm		

Conical surface Flux(90deg): 201.86 lm

%lum = 12.3%

%lamp = 12.3%

Conical surface Flux(120deg): 368.6 lm

%lum = 22.5%

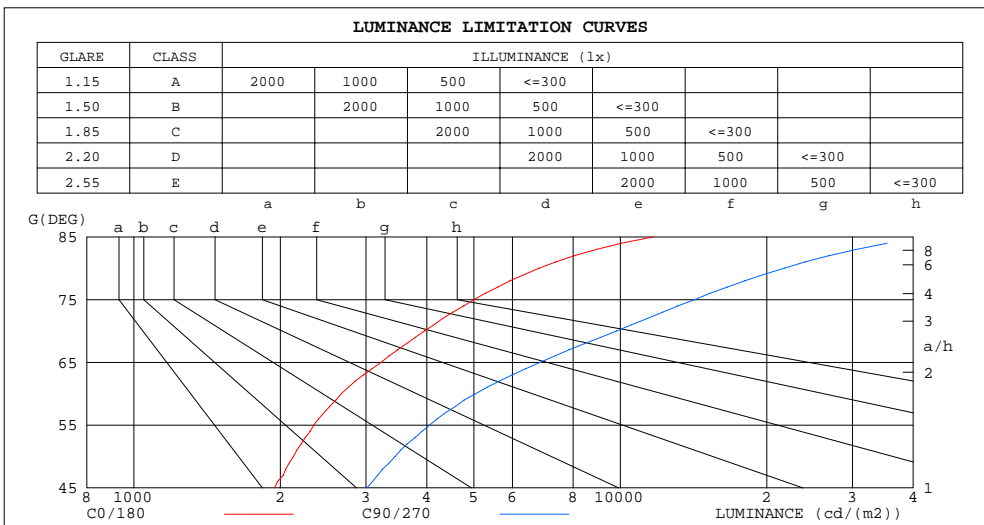
%lamp = 22.5%

C Range: 0 - 360DEG
 C Interval: 15.0DEG
 Test Speed: HIGH
 Temperature: 25.0DEG
 Operators: Alan Wang
 Test Date: 08 May 2023

γ Range: 0 - 180DEG
 γ Interval: 1.0DEG
 Test System: EVERFINE GO-R5000_V2 SYSTEM V2.00.416
 Humidity: 42.1%
 Test Distance: 2.500m [K=1.0390]
 Remarks:

LUMINANCE LIMITATION CURVES

Test:U:277.00V I:0.0792A P:18.310W PF:0.8345 Freq:60.00Hz Lamp Flux:1636.84x1 lm		
NAME:	TYPE:LED	WEIGHT:
SPEC.:	DIM.:	SERIAL No.:
MFR.: ASD Lighting corp	SUR.:	Shielding Angle:



LUMINANCE cd/(m2)		
G(DEG)	C0/180	C90/270
85	11716	42223
80	6808	21731
75	5002	14226
70	3957	9826
65	3224	6843
60	2669	5041
55	2343	4055
50	2129	3444
45	1947	3011

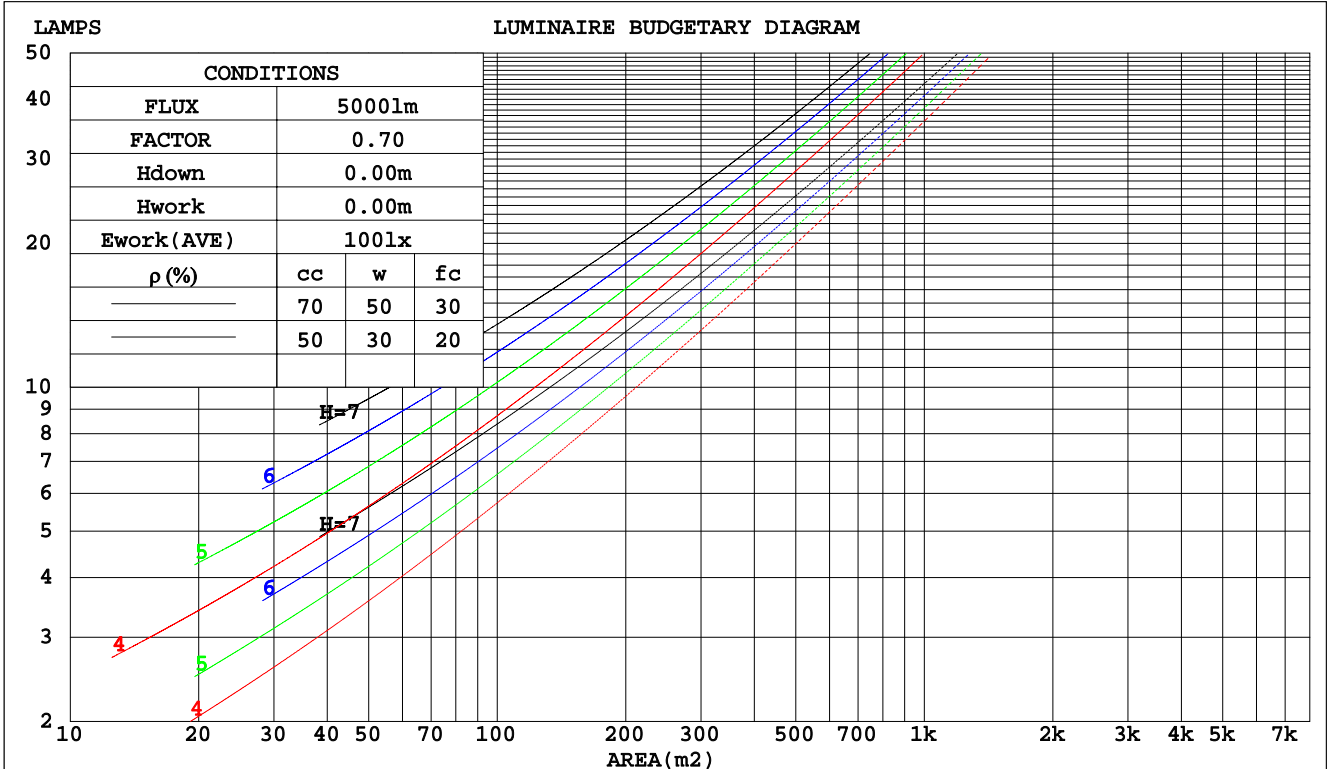
C Range: 0 - 360DEG
 C Interval: 15.0DEG
 Test Speed: HIGH
 Temperature: 25.0DEG
 Operators: Alan Wang
 Test Date: 08 May 2023

γ Range: 0 - 180DEG
 γ Interval: 1.0DEG
 Test System: EVERFINE GO-R5000_V2 SYSTEM V2.00.416
 Humidity: 42.1%
 Test Distance: 2.500m [K=1.0390]
 Remarks:

CU AND LUMINAIRE BUDGETARY ESTIMATE DIAGRAM

Test:U:277.00V I:0.0792A P:18.310W PF:0.8345 Freq:60.00Hz Lamp Flux:1636.84x1 lm		
NAME:	TYPE:LED	WEIGHT:
SPEC.:	DIM.:	SERIAL No.:
MFR.: ASD Lighting corp	SUR.:	Shielding Angle:

pcc	80%			70%			50%			30%			10%			0
	50%	30%	10%	50%	30%	10%	50%	30%	10%	50%	30%	10%	50%	30%	10%	0
pw																
pfc	20%			20%			20%			20%			20%			0
RCR	RCR:Room Cavity Ratio						Coefficients of Utilization(CU)									
0.0	1.08	1.08	1.08	.00	.00	.00	.84	.84	.84	.71	.71	.71	.58	.58	.58	.52
1.0	.86	.80	.75	.79	.74	.69	.66	.62	.58	.54	.51	.48	.43	.41	.38	.33
2.0	.73	.64	.57	.67	.59	.53	.55	.49	.44	.45	.40	.36	.35	.32	.29	.24
3.0	.62	.53	.46	.57	.49	.42	.47	.41	.35	.38	.33	.29	.29	.26	.22	.18
4.0	.54	.44	.37	.50	.41	.34	.41	.34	.29	.33	.28	.23	.25	.21	.18	.14
5.0	.48	.38	.31	.44	.35	.29	.36	.29	.24	.29	.24	.19	.22	.18	.15	.11
6.0	.42	.33	.26	.39	.30	.24	.32	.25	.20	.26	.20	.16	.20	.16	.13	.09
7.0	.38	.29	.23	.35	.27	.21	.29	.22	.17	.23	.18	.14	.18	.14	.11	.08
8.0	.34	.25	.20	.31	.24	.18	.26	.20	.15	.21	.16	.12	.17	.12	.09	.07
9.0	.31	.23	.17	.29	.21	.16	.24	.18	.13	.19	.14	.11	.15	.11	.08	.06
10.0	.28	.20	.15	.26	.19	.14	.22	.16	.12	.18	.13	.10	.14	.10	.07	.05



C Range: 0 - 360DEG
 C Interval: 15.0DEG
 Test Speed: HIGH
 Temperature: 25.0DEG
 Operators: Alan Wang
 Test Date: 08 May 2023

γ Range: 0 - 180DEG
 γ Interval: 1.0DEG
 Test System: EVERFINE GO-R5000_V2 SYSTEM V2.00.416
 Humidity: 42.1%
 Test Distance: 2.500m [K=1.0390]
 Remarks:

WEC AND CCEC

Test:U:277.00V I:0.0792A P:18.310W PF:0.8345 Freq:60.00Hz Lamp Flux:1636.84x1 lm		
NAME:	TYPE:LED	WEIGHT:
SPEC.:	DIM.:	SERIAL No.:
MFR.: ASD Lighting corp	SUR.:	Shielding Angle:

ρcc	80%			70%			50%			30%			10%			0
ρw	50%	30%	10%	50%	30%	10%	50%	30%	10%	50%	30%	10%	50%	30%	10%	0
ρfc	20%			20%			20%			20%			20%			0
RCR	RCR:Room Cavity Ratio						Wall Exitance Coefficients(WEC)									
0.0																
1.0	.425	.242	.077	.403	.230	.073	.362	.208	.066	.324	.187	.060	.289	.168	.054	
2.0	.352	.193	.059	.332	.183	.056	.294	.164	.051	.260	.146	.046	.228	.129	.041	
3.0	.305	.162	.049	.287	.154	.046	.253	.137	.042	.221	.121	.037	.191	.106	.033	
4.0	.271	.141	.041	.254	.133	.039	.222	.118	.035	.193	.104	.031	.166	.090	.027	
5.0	.243	.124	.036	.228	.117	.034	.199	.104	.031	.172	.091	.027	.147	.079	.024	
6.0	.221	.111	.032	.207	.105	.030	.181	.093	.027	.156	.081	.024	.132	.070	.021	
7.0	.203	.100	.028	.190	.095	.027	.165	.084	.024	.142	.073	.021	.121	.063	.018	
8.0	.187	.092	.026	.175	.086	.024	.153	.076	.022	.131	.066	.019	.111	.057	.017	
9.0	.174	.084	.024	.163	.079	.022	.142	.070	.020	.121	.061	.017	.103	.052	.015	
10.0	.162	.078	.022	.152	.073	.020	.132	.065	.018	.113	.056	.016	.095	.048	.014	

ρcc	80%			70%			50%			30%			10%			0
ρw	50%	30%	10%	50%	30%	10%	50%	30%	10%	50%	30%	10%	50%	30%	10%	0
ρfc	20%			20%			20%			20%			20%			0
RCR	RCR:Room Cavity Ratio						Ceiling Cavity Exitance Coefficients(CCEC)									
0.0	.557	.557	.557	.476	.476	.476	.325	.325	.325	.186	.186	.186	.060	.060	.060	
1.0	.557	.524	.494	.477	.450	.425	.326	.310	.294	.188	.179	.171	.060	.058	.055	
2.0	.552	.503	.462	.473	.433	.400	.324	.300	.279	.187	.174	.163	.060	.056	.053	
3.0	.545	.488	.443	.467	.421	.384	.321	.293	.269	.185	.171	.159	.060	.055	.052	
4.0	.537	.477	.430	.461	.412	.374	.317	.287	.263	.183	.168	.156	.059	.055	.051	
5.0	.530	.468	.422	.455	.405	.367	.313	.283	.259	.182	.166	.154	.059	.054	.051	
6.0	.522	.460	.416	.449	.399	.362	.310	.279	.256	.180	.164	.152	.058	.054	.050	
7.0	.516	.454	.411	.443	.394	.358	.306	.276	.254	.178	.163	.151	.058	.053	.050	
8.0	.509	.449	.408	.438	.389	.356	.303	.273	.252	.176	.161	.150	.057	.053	.050	
9.0	.503	.445	.405	.433	.386	.353	.300	.271	.251	.175	.160	.150	.057	.053	.050	
10.0	.497	.441	.403	.429	.383	.352	.297	.269	.250	.173	.159	.149	.056	.052	.049	

C Range: 0 - 360DEG
 C Interval: 15.0DEG
 Test Speed: HIGH
 Temperature: 25.0DEG
 Operators: Alan Wang
 Test Date: 08 May 2023

γ Range: 0 - 180DEG
 γ Interval: 1.0DEG
 Test System: EVERFINE GO-R5000_V2 SYSTEM V2.00.416
 Humidity: 42.1%
 Test Distance: 2.500m [K=1.0390]
 Remarks:

UGR(Unified Glare Rating) Table

Test:U:277.00V I:0.0792A P:18.310W PF:0.8345 Freq:60.00Hz Lamp Flux:1636.84x1 lm										
NAME:					TYPE:LED			WEIGHT:		
SPEC.:					DIM.:			SERIAL No.:		
MFR.: ASD Lighting corp					SUR.:			Shielding Angle:		
ceiling/cavity	0.7	0.7	0.5	0.5	0.3	0.7	0.7	0.5	0.5	0.3
walls	0.5	0.3	0.5	0.3	0.3	0.5	0.3	0.5	0.3	0.3
working plane	0.2	0.2	0.2	0.2	0.2	0.2	0.2	0.2	0.2	0.2
Room dimensions	Viewed crosswise					Viewed endwise				
x = 2H y = 2H	12.5	13.7	13.4	14.5	15.7	15.3	16.4	16.1	17.3	18.4
3H	15.5	16.5	16.4	17.4	18.6	19.8	20.8	20.7	21.7	22.9
4H	17.1	18.1	18.0	19.0	20.1	22.3	23.3	23.2	24.2	25.4
6H	18.7	19.6	19.6	20.6	21.8	24.8	25.7	25.7	26.7	27.9
8H	19.6	20.4	20.5	21.4	22.6	26.1	27.0	27.0	27.9	29.1
12H	20.4	21.3	21.3	22.2	23.4	27.5	28.4	28.4	29.3	30.5
4H 2H	14.3	15.2	15.2	16.2	17.3	16.1	17.0	16.9	17.9	19.1
3H	17.3	18.2	18.2	19.1	20.3	20.7	21.5	21.6	22.5	23.7
4H	19.0	19.8	19.9	20.7	22.0	23.4	24.1	24.3	25.1	26.3
6H	20.7	21.4	21.6	22.3	23.6	26.1	26.8	27.0	27.8	29.0
8H	21.5	22.2	22.5	23.2	24.4	27.5	28.1	28.5	29.1	30.4
12H	22.4	23.0	23.4	24.0	25.3	29.0	29.6	30.0	30.6	31.9
8H 4H	20.6	21.2	21.5	22.2	23.5	23.8	24.4	24.7	25.4	26.7
6H	22.5	23.0	23.5	24.0	25.3	26.8	27.3	27.8	28.3	29.6
8H	23.4	23.9	24.4	25.0	26.3	28.4	28.9	29.4	29.9	31.2
12H	24.5	24.9	25.5	25.9	27.3	30.2	30.6	31.2	31.7	33.0
12H 4H	21.2	21.8	22.1	22.8	24.1	23.8	24.4	24.8	25.4	26.7
6H	23.2	23.7	24.2	24.7	26.1	26.9	27.4	27.9	28.4	29.7
8H	24.3	24.8	25.3	25.8	27.1	28.6	29.1	29.6	30.1	31.4
Variations with the observer position at spacings:										
S = 1.0H	+ 0.1 / - 0.1					+ 0.1 / - 0.1				
1.5H	+ 0.2 / - 0.2					+ 0.2 / - 0.3				
2.0H	+ 0.3 / - 0.4					+ 0.3 / - 0.4				

CIE Pub.117, 1637 lm Total Lamp Luminous Flux Corrected (8log(F/F0) = 1.7)
 Area: 0.06825 m2

C Range: 0 - 360DEG
 C Interval: 15.0DEG
 Test Speed: HIGH
 Temperature: 25.0DEG
 Operators: Alan Wang
 Test Date: 08 May 2023

γ Range: 0 - 180DEG
 γ Interval: 1.0DEG
 Test System: EVERFINE GO-R5000_V2 SYSTEM V2.00.416
 Humidity: 42.1%
 Test Distance: 2.500m [K=1.0390]
 Remarks:

UTILIZATION FACTORS TABLE

Test:U:277.00V I:0.0792A P:18.310W PF:0.8345 Freq:60.00Hz Lamp Flux:1636.84x1 lm		
NAME:	TYPE:LED	WEIGHT:
SPEC.:	DIM.:	SERIAL No.:
MFR.: ASD Lighting corp	SUR.:	Shielding Angle:

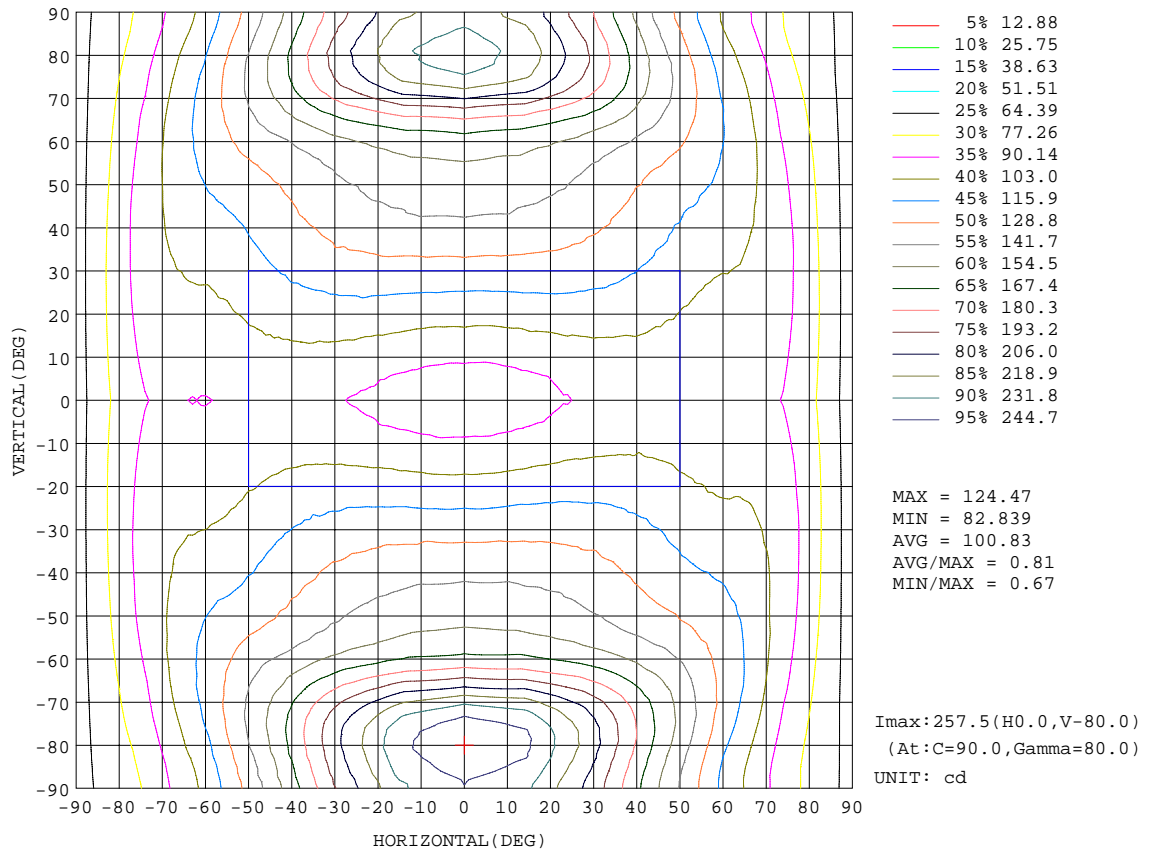
REFLECTANCE										
Ceiling	0.8	0.8	0.8	0.7	0.7	0.7	0.5	0.5	0.5	0
Walls	0.7	0.5	0.3	0.7	0.5	0.3	0.7	0.5	0.3	0
Working plane	0.2	0.2	0.2	0.2	0.2	0.2	0.2	0.2	0.2	0
ROOM INDEX	UTILIZATION FACTORS(PERCENT) $k(RI) \times RCR = 5$									
k = 0.60	36	23	16	34	22	15	31	20	14	7
0.80	44	30	22	42	29	21	37	26	19	10
1.00	51	37	28	48	35	26	42	33	24	12
1.25	58	44	34	54	41	32	47	36	29	15
1.50	63	49	39	59	46	37	51	40	33	18
2.00	71	58	48	66	54	45	56	47	40	22
2.50	76	64	54	71	60	51	60	51	44	25
3.00	80	69	60	74	64	56	63	55	49	27
4.00	86	76	68	79	70	63	67	60	55	31
5.00	89	81	73	82	75	68	70	64	59	34
ROOM INDEX	UF(total)									Direct
According to DIN EN 13032-2 2004			Suspended				SHRNOM = 1.25			

C Range: 0 - 360DEG
 C Interval: 15.0DEG
 Test Speed: HIGH
 Temperature: 25.0DEG
 Operators: Alan Wang
 Test Date: 08 May 2023

γ Range: 0 - 180DEG
 γ Interval: 1.0DEG
 Test System: EVERFINE GO-R5000_V2 SYSTEM V2.00.416
 Humidity: 42.1%
 Test Distance: 2.500m [K=1.0390]
 Remarks:

ISOCANDELA DIAGRAM

Test:U:277.00V I:0.0792A P:18.310W PF:0.8345 Freq:60.00Hz Lamp Flux:1636.84x1 lm		
NAME:	TYPE:LED	WEIGHT:
SPEC.:	DIM.:	SERIAL No.:
MFR.: ASD Lighting corp	SUR.:	Shielding Angle:

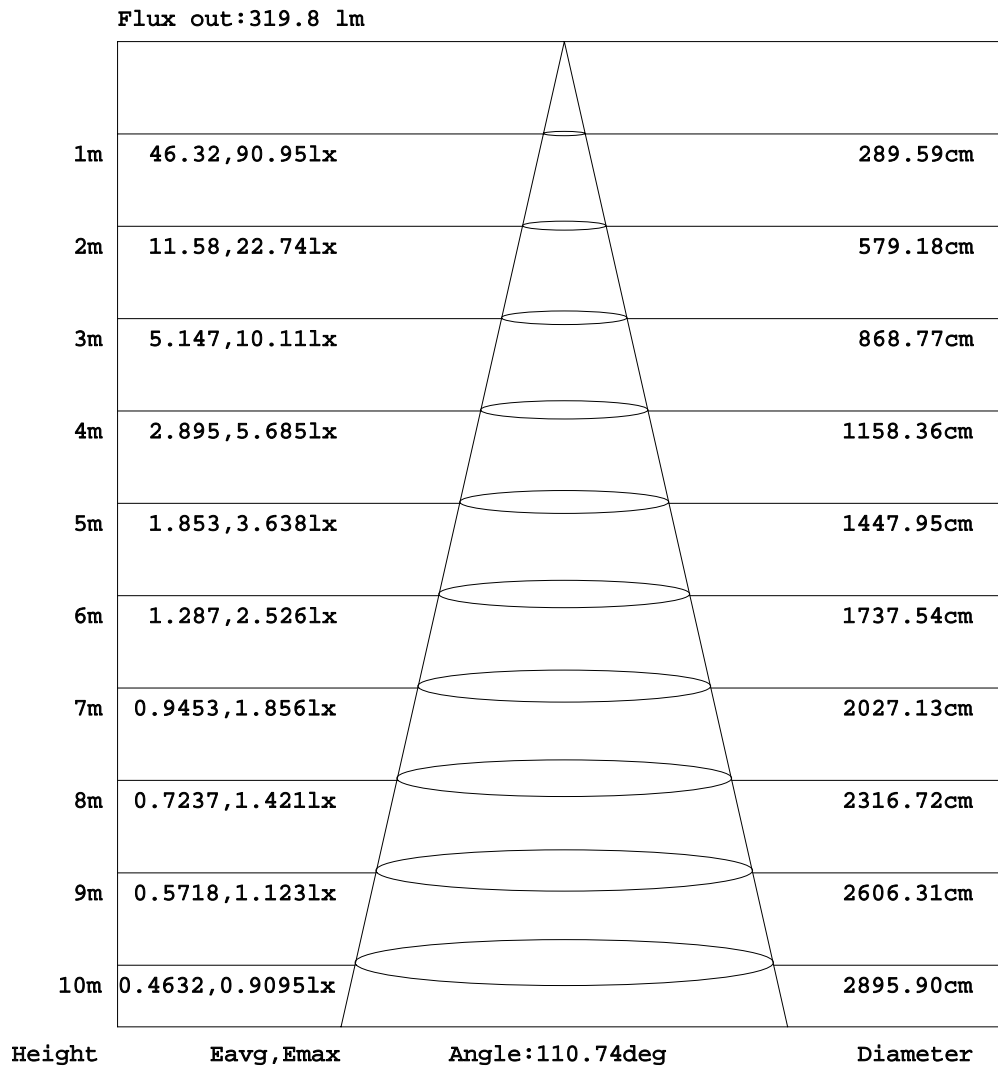


C Range: 0 - 360DEG
 C Interval: 15.0DEG
 Test Speed: HIGH
 Temperature: 25.0DEG
 Operators: Alan Wang
 Test Date: 08 May 2023

γ Range: 0 - 180DEG
 γ Interval: 1.0DEG
 Test System: EVERFINE GO-R5000_V2 SYSTEM V2.00.416
 Humidity: 42.1%
 Test Distance: 2.500m [K=1.0390]
 Remarks:

AAI Figure

Test:U:277.00V I:0.0792A P:18.310W PF:0.8345 Freq:60.00Hz Lamp Flux:1636.84x1 lm		
NAME:	TYPE:LED	WEIGHT:
SPEC.:	DIM.:	SERIAL No.:
MFR.: ASD Lighting corp	SUR.:	Shielding Angle:



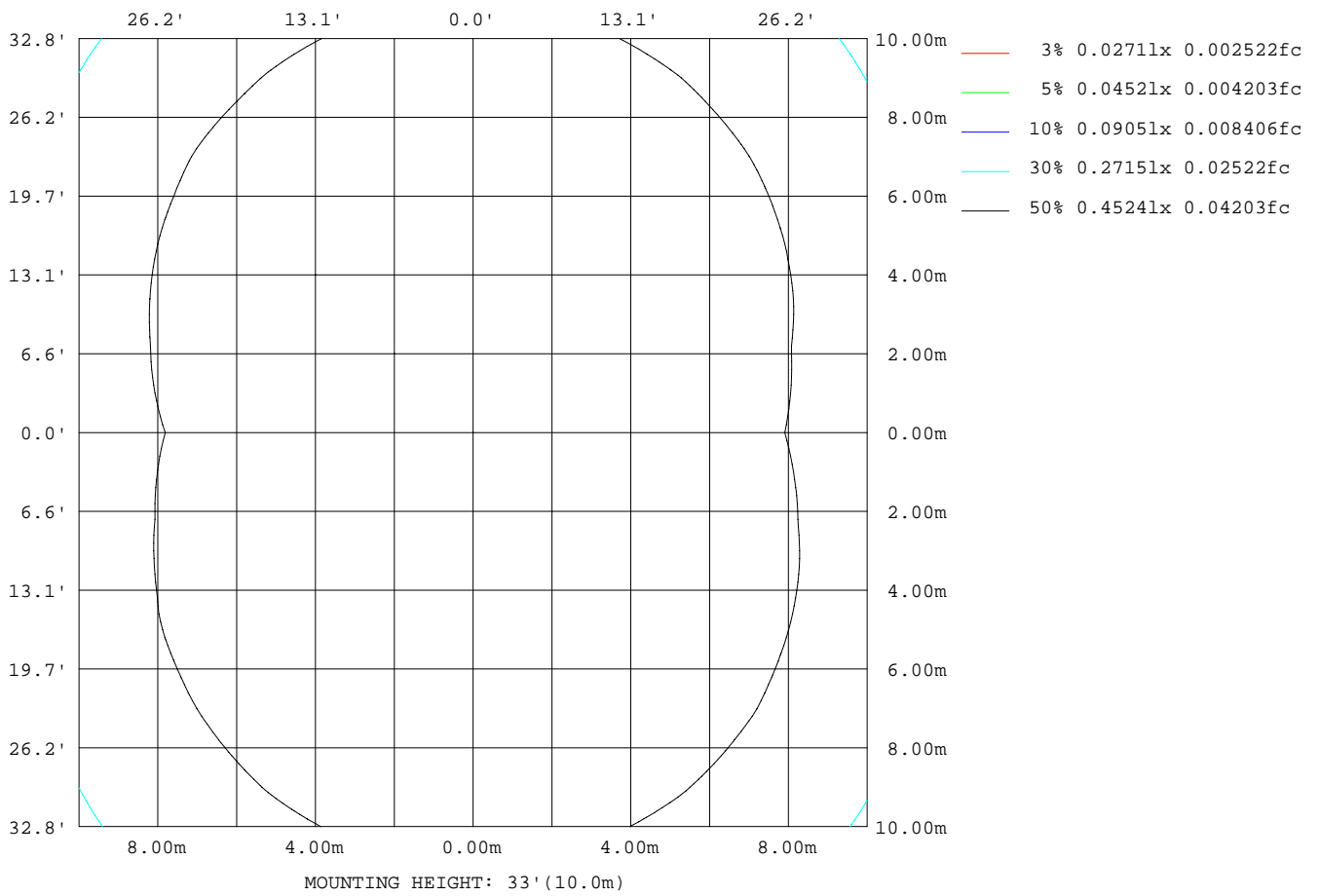
Note:The Curves indicate the illuminated area and the average illumination when the luminaire is at different distance.

C Range: 0 - 360DEG
 C Interval: 15.0DEG
 Test Speed: HIGH
 Temperature: 25.0DEG
 Operators: Alan Wang
 Test Date: 08 May 2023

γ Range: 0 - 180DEG
 γ Interval: 1.0DEG
 Test System: EVERFINE GO-R5000_V2 SYSTEM V2.00.416
 Humidity: 42.1%
 Test Distance: 2.500m [K=1.0390]
 Remarks:

ISOLUX DIAGRAM

Test:U:277.00V I:0.0792A P:18.310W PF:0.8345 Freq:60.00Hz Lamp Flux:1636.84x1 lm		
NAME:	TYPE:LED	WEIGHT:
SPEC.:	DIM.:	SERIAL No.:
MFR.: ASD Lighting corp	SUR.:	Shielding Angle:



C Range: 0 - 360DEG
 C Interval: 15.0DEG
 Test Speed: HIGH
 Temperature: 25.0DEG
 Operators: Alan Wang
 Test Date: 08 May 2023

γ Range: 0 - 180DEG
 γ Interval: 1.0DEG
 Test System: EVERFINE GO-R5000_V2 SYSTEM V2.00.416
 Humidity: 42.1%
 Test Distance: 2.500m [K=1.0390]
 Remarks:

LED Avg.L Report

Test:U:277.00V I:0.0792A P:18.310W PF:0.8345 Freq:60.00Hz Lamp Flux:1636.84x1 lm		
NAME:	TYPE:LED	WEIGHT:
SPEC.:	DIM.:	SERIAL No.:
MFR.: ASD Lighting corp	SUR.:	Shielding Angle:

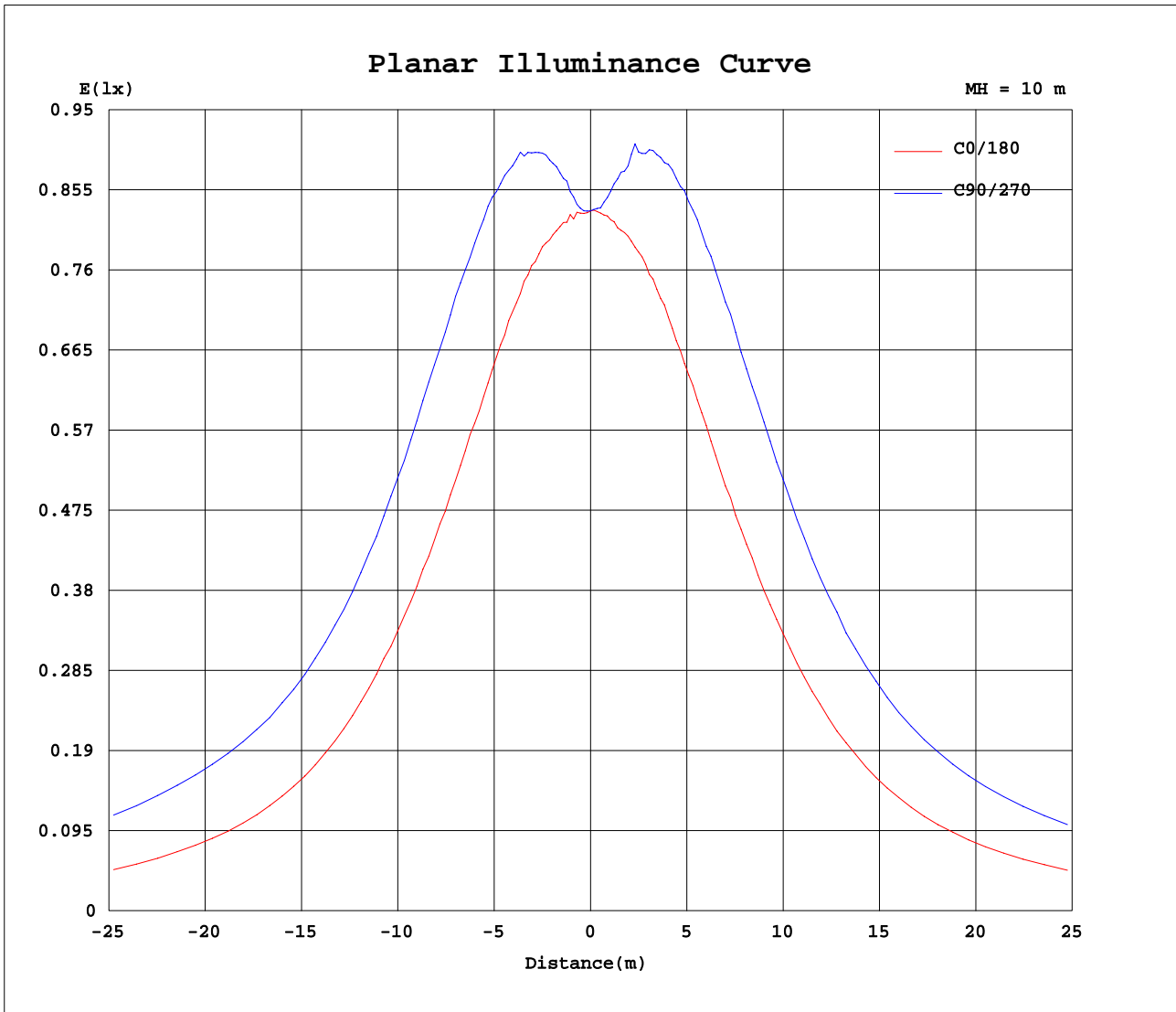
AvgL	cd/m2
L_0~180(65)av	3184
L_0~180(75)av	5005
L_0~180(85)av	11761
L_90~270(65)av	6531
L_90~270(75)av	13635
L_90~270(85)av	40807
L_45(65)av	4832
L_45(75)av	8894
L_45(85)av	25697

Standard: GB/T 29293-2012

C Range: 0 - 360DEG
C Interval: 15.0DEG
Test Speed: HIGH
Temperature: 25.0DEG
Operators: Alan Wang
Test Date: 08 May 2023

γ Range: 0 - 180DEG
 γ Interval: 1.0DEG
Test System: EVERFINE GO-R5000_V2 SYSTEM V2.00.416
Humidity: 42.1%
Test Distance: 2.500m [K=1.0390]
Remarks:

Planar Illuminance Curve



C Range: 0 - 360DEG
 C Interval: 15.0DEG
 Test Speed: HIGH
 Temperature: 25.0DEG
 Operators: Alan Wang
 Test Date: 08 May 2023

γ Range: 0 - 180DEG
 γ Interval: 1.0DEG
 Test System: EVERFINE GO-R5000_V2 SYSTEM V2.00.416
 Humidity: 42.1%
 Test Distance: 2.500m [K=1.0390]
 Remarks:

LUMINOUS DISTRIBUTION INTENSITY DATA

Test:U:277.00V I:0.0792A P:18.310W PF:0.8345 Freq:60.00Hz Lamp Flux:1636.84x1 lm		
NAME:	TYPE:LED	WEIGHT:
SPEC.:	DIM.:	SERIAL No.:
MFR.: ASD Lighting corp	SUR.:	Shielding Angle:

Table--1

UNIT: cd

C(DEG) γ (DEG)	0	15	30	45	60	75	90	105	120	135	150	165	180	195	210	225	240	255	270
0	83.0	83.2	82.9	83.0	83.6	82.7	83.0	83.1	83.0	83.0	82.9	83.1	83.0	83.2	82.9	83.0	83.6	82.7	83.0
5	83.0	83.1	83.8	84.2	85.1	85.3	85.6	85.4	85.1	84.4	83.6	83.2	83.4	83.4	83.6	84.2	84.8	85.3	85.6
10	84.5	84.8	86.6	88.7	90.6	91.9	92.4	91.6	90.1	88.4	86.3	84.4	84.2	84.9	86.7	89.0	90.7	91.4	91.8
15	86.4	87.9	91.2	94.5	97.5	99.2	99.8	98.8	96.5	95.0	91.0	86.9	86.1	87.5	91.3	94.9	97.2	99.2	99.7
20	88.2	90.9	96.1	101	105	107	108	106	104	100	95.1	89.7	87.5	90.5	96.0	101	104	107	108
25	90.2	94.7	101	108	113	115	116	114	112	107	100	92.9	89.2	93.8	101	107	112	115	115
30	91.3	97.3	106	114	120	124	124	122	119	113	104	95.6	91.0	97.0	106	113	119	122	124
35	92.9	100	111	120	127	131	133	130	126	118	108	98.4	91.7	99.5	110	119	126	130	131
40	93.6	103	114	125	133	137	140	137	132	123	112	100	93.1	102	113	124	132	137	138
45	93.9	104	117	130	138	143	145	143	137	126	115	101	92.9	103	116	129	138	143	145
50	93.4	105	119	132	142	149	151	148	141	130	116	101	92.4	104	118	130	141	148	149
55	91.7	105	119	134	147	156	159	155	145	132	116	101	90.7	103	118	133	144	152	154
60	91.1	105	121	138	155	168	172	166	152	134	117	101	89.6	103	118	134	148	159	162
65	93.0	107	124	145	170	190	197	188	165	140	119	102	90.7	104	120	138	158	174	179
70	92.4	108	128	156	192	220	229	215	184	150	123	104	91.4	106	123	145	174	198	207
75	88.4	106	130	167	207	240	251	235	200	158	125	102	88.5	104	125	155	192	221	230
80	80.7	99.7	129	168	212	246	258	241	204	159	122	95.9	81.3	98.7	123	158	199	228	239
85	69.7	89.3	119	160	206	241	251	237	199	152	113	86.4	70.2	89.2	116	153	194	225	234
90	59.9	81.6	113	155	200	233	243	230	192	146	106	77.0	59.7	79.5	107	146	187	217	226
95	66.7	86.8	117	161	207	242	253	239	199	151	111	81.9	64.9	84.2	112	151	194	226	236
100	72.1	88.4	117	160	208	244	256	241	200	153	112	85.0	71.3	87.2	114	153	197	231	241
105	73.5	85.0	112	150	197	233	246	230	191	145	109	83.0	74.1	85.2	110	147	189	223	233
110	74.2	81.1	105	138	177	209	220	206	173	135	103	79.6	74.7	81.3	105	136	173	201	210
115	78.1	81.6	102	128	156	179	188	178	155	126	100	79.9	78.3	80.5	101	127	153	176	183
120	83.6	86.9	100	122	143	159	165	159	141	120	98.7	84.9	83.4	84.7	99.2	120	141	156	161
125	88.1	91.6	98.9	117	134	148	152	147	133	116	97.9	87.9	88.4	89.3	97.5	115	132	145	150
130	91.5	94.3	97.5	113	127	139	143	138	127	112	96.6	91.6	91.4	92.1	95.4	111	125	137	140
135	93.3	95.7	99.7	108	121	131	134	131	120	107	98.8	93.1	93.9	94.4	96.8	106	118	128	130
140	94.1	96.0	100	103	114	122	125	123	113	103	98.1	93.1	94.9	95.0	97.3	100	111	119	122
145	93.7	95.1	98.1	105	108	113	115	113	107	103	95.9	92.5	94.6	95.0	94.8	99.8	103	109	112
150	92.7	94.4	97.0	103	107	108	109	108	106	101	94.4	90.4	93.8	93.1	94.6	98.7	101	103	104
155	92.3	92.6	95.7	99.4	103	106	107	106	102	97.6	92.6	87.8	92.6	92.6	92.5	96.2	98.7	100	101
160	91.9	90.5	93.7	96.0	98.4	100	101	100.0	94.9	94.5	90.3	86.8	92.0	91.4	89.6	91.5	94.9	96.3	96.6
165	89.3	89.0	90.9	93.5	94.1	95.6	96.2	93.0	93.3	91.2	86.2	87.5	89.9	90.2	87.9	87.3	89.3	91.5	92.8
170	76.5	79.1	80.0	85.0	89.6	90.1	89.0	91.0	88.4	81.3	73.0	77.3	77.6	77.5	79.8	78.0	83.6	88.4	88.8
175	54.9	55.4	56.7	69.4	71.5	69.1	65.2	64.2	63.6	58.2	55.6	54.5	54.8	55.0	54.0	54.4	57.6	60.5	61.9
180	43.7	42.3	40.3	36.3	19.3	5.11	0.00	9.89	22.4	34.4	44.1	44.1	45.0	45.0	42.6	38.3	34.4	28.0	13.7

C Range: 0 - 360DEG
 C Interval: 15.0DEG
 Test Speed: HIGH
 Temperature: 25.0DEG
 Operators: Alan Wang
 Test Date: 08 May 2023

γ Range: 0 - 180DEG
 γ Interval: 1.0DEG
 Test System: EVERFINE GO-R5000_V2 SYSTEM V2.00.416
 Humidity: 42.1%
 Test Distance: 2.500m [K=1.0390]
 Remarks:

LUMINOUS DISTRIBUTION INTENSITY DATA

Test:U:277.00V I:0.0792A P:18.310W PF:0.8345 Freq:60.00Hz Lamp Flux:1636.84x1 lm		
NAME:	TYPE:LED	WEIGHT:
SPEC.:	DIM.:	SERIAL No.:
MFR.: ASD Lighting corp	SUR.:	Shielding Angle:

Table--2

UNIT: cd

C(DEG) γ (DEG)	285	300	315	330	345														
0	83.1	83.0	83.0	82.9	83.1														
5	85.2	85.1	83.9	83.5	83.4														
10	91.6	89.9	88.3	86.3	84.6														
15	98.9	96.8	94.4	90.9	87.4														
20	106	104	100	95.2	89.9														
25	114	111	106	99.8	93.5														
30	122	118	113	104	96.2														
35	130	125	118	109	98.4														
40	136	131	123	112	100														
45	142	136	126	114	102														
50	147	139	129	115	102														
55	152	142	130	116	102														
60	158	146	131	116	101														
65	172	155	135	118	103														
70	196	171	143	120	103														
75	218	186	149	121	101														
80	225	192	152	118	94.3														
85	222	187	145	109	84.4														
90	214	180	138	101	75.3														
95	223	188	144	106	80.3														
100	226	188	144	108	82.5														
105	218	181	138	104	80.2														
110	196	165	128	98.2	75.9														
115	172	147	120	96.0	77.9														
120	153	136	115	94.8	83.5														
125	143	128	111	93.1	88.0														
130	134	122	107	92.2	91.4														
135	127	116	102	95.0	93.2														
140	118	109	98.1	95.3	93.6														
145	108	102	99.4	95.2	93.7														
150	103	102	98.7	94.7	93.0														
155	101	99.7	97.9	94.1	92.6														
160	97.9	97.3	95.7	92.5	89.5														
165	91.4	93.6	92.0	89.5	87.4														
170	88.5	85.7	88.3	81.2	79.0														
175	63.2	66.9	66.6	62.8	53.5														
180	10.7	15.2	31.6	37.3	40.3														

C Range: 0 - 360DEG
 C Interval: 15.0DEG
 Test Speed: HIGH
 Temperature: 25.0DEG
 Operators: Alan Wang
 Test Date: 08 May 2023

γ Range: 0 - 180DEG
 γ Interval: 1.0DEG
 Test System: EVERFINE GO-R5000_V2 SYSTEM V2.00.416
 Humidity: 42.1%
 Test Distance: 2.500m [K=1.0390]
 Remarks: