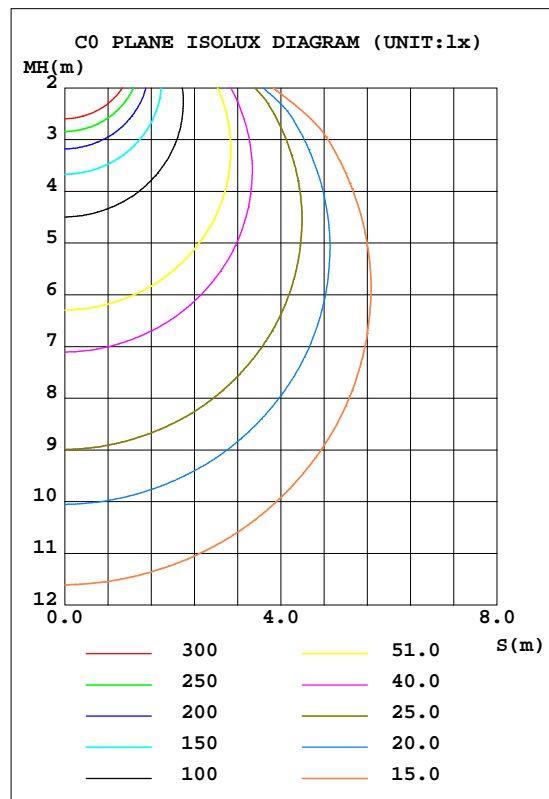
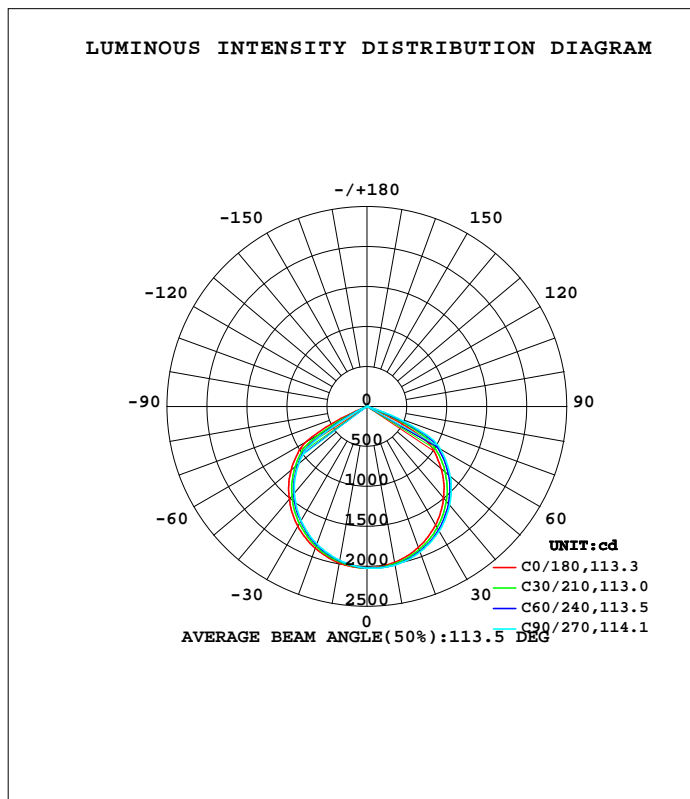


LUMINAIRE PHOTOMETRIC TEST REPORT

Test:U:120.17V I:0.3334A P:39.709W PF:0.9912 Freq:59.98Hz Lamp Flux:5200x1 lm		
NAME:	TYPE:	WEIGHT:
SPEC.:	DIM.:	SERIAL No.:
MFR.: ASD LIGHTNG CORP	SUR.:	Shielding Angle:

DATA OF LAMP		PHOTOMETRIC DATA Eff: 126.78 lm/W			
MODEL	ASD-GNL-40D50-PC-BK	I _{max} (cd)	2026	S/MH(C0/180)	1.27
NOMINAL POWER(W)	40	LOR(%)	96.8	S/MH(C90/270)	1.22
RATED VOLTAGE(V)	120	TOTAL FLUX(lm)	5034.4	h UP, DN(C0-180)	0.4, 52.1
NOMINAL FLUX(lm)	5200	CIE CLASS	DIRECT	h UP, DN(C180-360)	0.5, 43.8
LAMPS INSIDE	1	h up(%)	0.9	CIBSE SHR NOM	1.25
TEST VOLTAGE(V)	120	h down(%)	95.9	CIBSE SHR MAX	1.35



C Range: 0 - 360DEG
 C Interval: 15.0DEG
 Test Speed: HIGH
 Temperature: 25.3DEG
 Operators:
 Test Date: 2021-03-12

g Range: 0 - 180DEG
 g Interval: 1.0DEG
 Test System: EVERFINE GO-2000B_V1 SYSTEM V2.00.426
 Humidity: 65.0%
 Test Distance: 8.100m [K=1.1235]
 Remarks:

ZONAL FLUX DIAGRAM

ZONAL FLUX DIAGRAM:

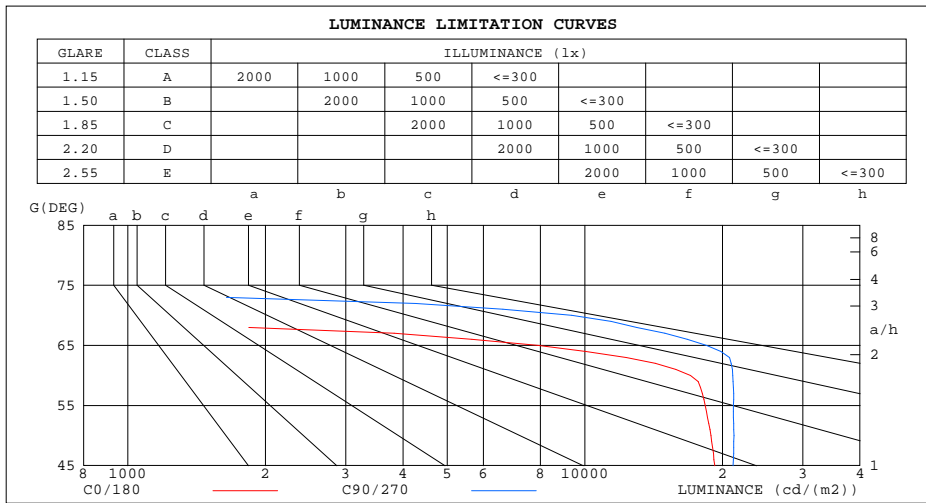
g	C0	C45	C90	C135	C180	C225	C270	C315	g	F zone	F total	%lum,lamp
10	1980	2005	2014	2005	1988	1964	1955	1962	0- 10	191.1	191.1	3.8,3.67
20	1877	1919	1938	1927	1889	1849	1830	1842	10- 20	548.1	739.2	14.7,14.2
30	1714	1775	1804	1781	1731	1670	1649	1661	20- 30	834.6	1574	31.3,30.3
40	1491	1571	1609	1580	1511	1438	1413	1426	30- 40	1014	2588	51.4,49.8
50	1214	1309	1362	1323	1240	1141	1116	1131	40- 50	1060	3647	72.4,70.1
60	851.6	990.9	1054	1008	868.8	541.7	391.4	554.5	50- 60	931.3	4579	90.9,88.1
70	13.40	152.0	320.0	164.1	13.05	2.960	2.896	3.108	60- 70	391.0	4970	98.7,95.6
80	2.746	2.937	3.031	2.960	2.534	2.157	2.050	2.268	70- 80	15.99	4986	99,95.9
90	1.436	1.823	2.030	1.887	1.167	1.555	1.773	1.625	80- 90	2.259	4988	99.1,95.9
100	3.098	2.496	2.294	2.519	2.665	3.268	3.569	3.349	90-100	2.319	4990	99.1,96
110	5.237	4.530	4.269	4.536	4.758	5.406	5.719	5.488	100-110	4.152	4994	99.2,96
120	7.416	6.733	6.478	6.715	6.873	7.504	7.776	7.568	110-120	6.009	5000	99.3,96.2
130	9.462	8.785	8.593	8.755	8.867	9.410	9.729	9.416	120-130	7.285	5008	99.5,96.3
140	11.12	10.56	10.43	10.46	10.50	10.96	11.23	10.98	130-140	7.706	5015	99.6,96.4
150	12.83	12.30	12.18	12.32	12.23	12.69	12.92	12.81	140-150	7.281	5023	99.8,96.6
160	14.17	13.98	13.95	13.89	13.79	14.05	14.24	14.22	150-160	6.145	5029	99.9,96.7
170	15.25	15.18	15.18	15.14	15.03	15.24	15.34	15.40	160-170	4.138	5033	100,96.8
180	15.74	15.86	15.79	15.93	15.75	15.86	15.79	15.94	170-180	1.480	5034	100,96.8
DEG	LUMINOUS INTENSITY:cd									UNIT:lm		

C Range: 0 - 360DEG
 C Interval: 15.0DEG
 Test Speed: HIGH
 Temperature:25.3DEG
 Operators:
 Test Date:2021-03-12

g Range: 0 - 180DEG
 g Interval: 1.0DEG
 Test System:EVERFINE GO-2000B_V1 SYSTEM V2.00.426
 Humidity:65.0%
 Test Distance:8.100m [K=1.1235]
 Remarks:

LUMINANCE LIMITATION CURVES

Test:U:120.17V I:0.3334A P:39.709W PF:0.9912 Freq:59.98Hz Lamp Flux:5200x1 lm		
NAME:	TYPE:	WEIGHT:
SPEC.:	DIM.:	SERIAL No.:
MFR.: ASD LIGHTNG CORP	SUR.:	Shielding Angle:



LUMINANCE cd/(m2)		
G(DEG)	C0/180	C90/270
85	244	312
80	158	175
75	117	374
70	392	9357
65	7905	18456
60	17033	21070
55	18342	21154
50	18880	21193
45	19251	21111

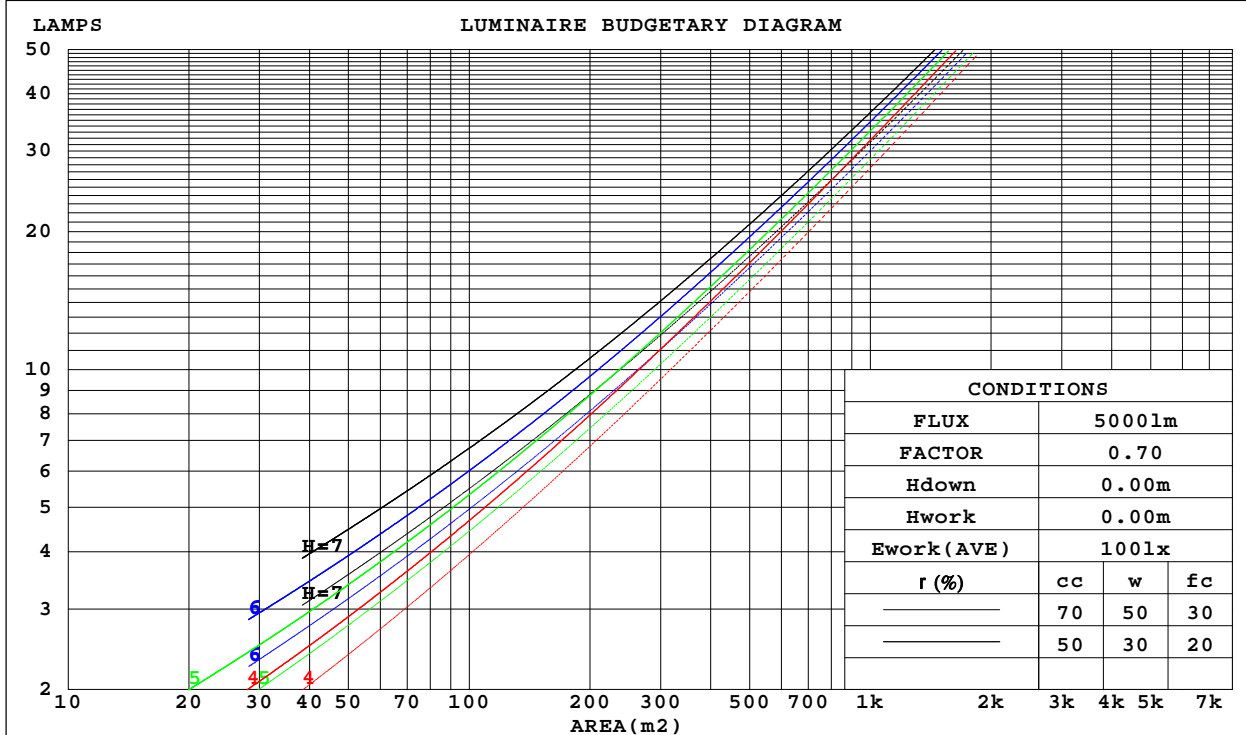
C Range: 0 - 360DEG
 C Interval: 15.0DEG
 Test Speed: HIGH
 Temperature:25.3DEG
 Operators:
 Test Date:2021-03-12

g Range: 0 - 180DEG
 g Interval: 1.0DEG
 Test System:EVERFINE GO-2000B_V1 SYSTEM V2.00.426
 Humidity:65.0%
 Test Distance:8.100m [K=1.1235]
 Remarks:

CU AND LUMINAIRE BUDGETARY ESTIMATE DIAGRAM

Test:U:120.17V I:0.3334A P:39.709W PF:0.9912 Freq:59.98Hz Lamp Flux:5200x1 lm		
NAME:	TYPE:	WEIGHT:
SPEC.:	DIM.:	SERIAL No.:
MFR.: ASD LIGHTNG CORP	SUR.:	Shielding Angle:

r _{cc}	80%			70%			50%			30%			10%			0
r _w	50%	30%	10%	50%	30%	10%	50%	30%	10%	50%	30%	10%	50%	30%	10%	0
r _{fc}	20%			20%			20%			20%			20%			0
RCR	RCR:Room Cavity Ratio Coefficients of Utilization(CU)															
0.0	1.15	1.15	1.15	1.12	1.12	1.12	1.07	1.07	1.07	1.02	1.02	1.02	.98	.98	.98	.96
1.0	1.03	1.00	.97	1.01	.98	.95	.97	.95	.92	.93	.91	.89	.90	.88	.87	.85
2.0	.92	.86	.82	.90	.85	.81	.87	.82	.79	.83	.80	.77	.81	.78	.75	.73
3.0	.82	.75	.69	.80	.74	.69	.77	.72	.67	.75	.70	.66	.72	.68	.65	.63
4.0	.73	.65	.59	.72	.64	.59	.69	.63	.58	.67	.62	.57	.65	.60	.56	.54
5.0	.65	.57	.51	.64	.57	.51	.62	.56	.51	.60	.55	.50	.58	.53	.49	.47
6.0	.59	.51	.45	.58	.50	.45	.56	.49	.44	.55	.49	.44	.53	.48	.44	.42
7.0	.54	.46	.40	.53	.45	.40	.51	.44	.39	.50	.44	.39	.48	.43	.39	.37
8.0	.49	.41	.36	.48	.41	.35	.47	.40	.35	.46	.39	.35	.44	.39	.35	.33
9.0	.45	.37	.32	.44	.37	.32	.43	.36	.32	.42	.36	.32	.41	.35	.31	.30
10.0	.41	.34	.29	.41	.34	.29	.40	.33	.29	.39	.33	.29	.38	.32	.28	.27



C Range: 0 - 360DEG
 C Interval: 15.0DEG
 Test Speed: HIGH
 Temperature: 25.3DEG
 Operators:
 Test Date: 2021-03-12

g Range: 0 - 180DEG
 g Interval: 1.0DEG
 Test System: EVERFINE GO-2000B_V1 SYSTEM V2.00.426
 Humidity: 65.0%
 Test Distance: 8.100m [K=1.1235]
 Remarks:

WEC AND CCEC

Test:U:120.17V I:0.3334A P:39.709W PF:0.9912 Freq:59.98Hz Lamp Flux:5200x1 lm		
NAME:	TYPE:	WEIGHT:
SPEC.:	DIM.:	SERIAL No.:
MFR.: ASD LIGHTNG CORP	SUR.:	Shielding Angle:

r cc	80%			70%			50%			30%			10%			0
r w	50%	30%	10%	50%	30%	10%	50%	30%	10%	50%	30%	10%	50%	30%	10%	0
r fc	20%			20%			20%			20%			20%			0
RCR	RCR:Room Cavity Ratio						Wall Exitance Coefficients(WEC)									
0.0																
1.0	.240	.137	.043	.233	.133	.042	.220	.126	.040	.208	.120	.039	.197	.114	.037	
2.0	.238	.130	.040	.232	.128	.039	.221	.123	.038	.210	.118	.037	.200	.113	.036	
3.0	.228	.122	.036	.223	.119	.036	.213	.115	.035	.204	.112	.034	.195	.108	.033	
4.0	.216	.112	.033	.212	.111	.033	.203	.108	.032	.194	.104	.032	.187	.101	.031	
5.0	.204	.104	.030	.200	.103	.030	.192	.100	.029	.185	.097	.029	.178	.095	.029	
6.0	.192	.096	.028	.188	.095	.027	.181	.093	.027	.175	.091	.027	.168	.089	.026	
7.0	.181	.089	.025	.177	.088	.025	.171	.086	.025	.165	.085	.025	.159	.083	.024	
8.0	.170	.083	.023	.167	.082	.023	.162	.081	.023	.156	.079	.023	.151	.078	.023	
9.0	.161	.078	.022	.158	.077	.022	.153	.076	.021	.148	.074	.021	.143	.073	.021	
10.0	.152	.073	.020	.150	.072	.020	.145	.071	.020	.140	.070	.020	.136	.069	.020	

r cc	80%			70%			50%			30%			10%			0
r w	50%	30%	10%	50%	30%	10%	50%	30%	10%	50%	30%	10%	50%	30%	10%	0
r fc	20%			20%			20%			20%			20%			0
RCR	RCR:Room Cavity Ratio						Ceiling Cavity Exitance Coefficients(CCEC)									
0.0	.191	.191	.191	.163	.163	.163	.112	.112	.112	.064	.064	.064	.020	.020	.020	
1.0	.177	.159	.142	.152	.136	.122	.104	.094	.084	.060	.054	.049	.019	.017	.016	
2.0	.168	.135	.107	.144	.116	.093	.098	.080	.065	.057	.047	.038	.018	.015	.012	
3.0	.160	.117	.084	.137	.101	.072	.094	.070	.051	.054	.041	.030	.017	.013	.010	
4.0	.153	.104	.067	.131	.090	.058	.090	.063	.041	.052	.037	.024	.017	.012	.008	
5.0	.146	.094	.055	.125	.081	.048	.086	.057	.034	.050	.033	.020	.016	.011	.007	
6.0	.140	.086	.047	.120	.074	.041	.083	.052	.029	.048	.031	.017	.016	.010	.006	
7.0	.134	.079	.041	.115	.069	.036	.079	.048	.025	.046	.028	.015	.015	.009	.005	
8.0	.128	.074	.036	.110	.064	.031	.076	.045	.022	.044	.026	.013	.014	.009	.004	
9.0	.123	.069	.032	.106	.060	.028	.073	.042	.020	.043	.025	.012	.014	.008	.004	
10.0	.118	.065	.029	.101	.056	.026	.070	.040	.018	.041	.023	.011	.013	.008	.004	

C Range: 0 - 360DEG
 C Interval: 15.0DEG
 Test Speed: HIGH
 Temperature:25.3DEG
 Operators:
 Test Date:2021-03-12

g Range: 0 - 180DEG
 g Interval: 1.0DEG
 Test System:EVERFINE GO-2000B_V1 SYSTEM V2.00.426
 Humidity:65.0%
 Test Distance:8.100m [K=1.1235]
 Remarks:

UGR(Unified Glare Rating) Table

Test:U:120.17V I:0.3334A P:39.709W PF:0.9912 Freq:59.98Hz Lamp Flux:5200x1 lm										
NAME:					TYPE:			WEIGHT:		
SPEC.:					DIM.:			SERIAL No.:		
MFR.: ASD LIGHTNG CORP					SUR.:			Shielding Angle:		
ceiling/cavity	0.7	0.7	0.5	0.5	0.3	0.7	0.7	0.5	0.5	0.3
walls	0.5	0.3	0.5	0.3	0.3	0.5	0.3	0.5	0.3	0.3
working plane	0.2	0.2	0.2	0.2	0.2	0.2	0.2	0.2	0.2	0.2
Room dimensions	Viewed crosswise					Viewed endwise				
x = 2H y = 2H	23.2	24.7	23.6	25.0	25.3	23.9	25.4	24.3	25.8	26.1
3H	23.1	24.4	23.5	24.8	25.2	24.7	26.1	25.1	26.4	26.8
4H	23.0	24.3	23.5	24.7	25.1	24.7	25.9	25.1	26.3	26.7
6H	23.0	24.1	23.4	24.5	24.9	24.6	25.7	25.0	26.1	26.5
8H	22.9	24.0	23.4	24.4	24.9	24.6	25.6	25.0	26.1	26.5
12H	22.9	23.9	23.4	24.3	24.8	24.5	25.6	25.0	26.0	26.4
4H 2H	23.7	24.9	24.1	25.3	25.7	24.3	25.6	24.8	25.9	26.3
3H	23.6	24.6	24.1	25.1	25.5	25.1	26.1	25.5	26.5	26.9
4H	23.6	24.5	24.0	24.9	25.4	25.0	25.9	25.4	26.3	26.8
6H	23.5	24.3	24.0	24.7	25.2	24.9	25.7	25.4	26.2	26.7
8H	23.4	24.2	23.9	24.6	25.1	24.9	25.6	25.4	26.1	26.6
12H	23.4	24.1	23.9	24.5	25.0	24.8	25.5	25.3	26.0	26.5
8H 4H	23.5	24.2	23.9	24.6	25.1	24.9	25.6	25.4	26.1	26.6
6H	23.4	24.0	23.9	24.5	25.0	24.8	25.4	25.3	25.9	26.4
8H	23.3	23.8	23.8	24.4	24.9	24.7	25.3	25.3	25.8	26.3
12H	23.3	23.7	23.8	24.3	24.8	24.7	25.2	25.2	25.7	26.3
12H 4H	23.4	24.1	23.9	24.6	25.1	24.8	25.5	25.3	26.0	26.5
6H	23.3	23.9	23.9	24.3	24.9	24.8	25.3	25.3	25.8	26.3
8H	23.3	23.7	23.8	24.3	24.8	24.7	25.2	25.2	25.7	26.3
CIE190: 2010										

CIE190: 2010
Area: 0.1 m2

C Range: 0 - 360DEG
C Interval: 15.0DEG
Test Speed: HIGH
Temperature:25.3DEG
Operators:
Test Date:2021-03-12

g Range: 0 - 180DEG
g Interval: 1.0DEG
Test System:EVERFINE GO-2000B_V1 SYSTEM V2.00.426
Humidity:65.0%
Test Distance:8.100m [K=1.1235]
Remarks:

UTILIZATION FACTORS TABLE

Test:U:120.17V I:0.3334A P:39.709W PF:0.9912 Freq:59.98Hz Lamp Flux:5200x1 lm		
NAME:	TYPE:	WEIGHT:
SPEC.:	DIM.:	SERIAL No.:
MFR.: ASD LIGHTNG CORP	SUR.:	Shielding Angle:

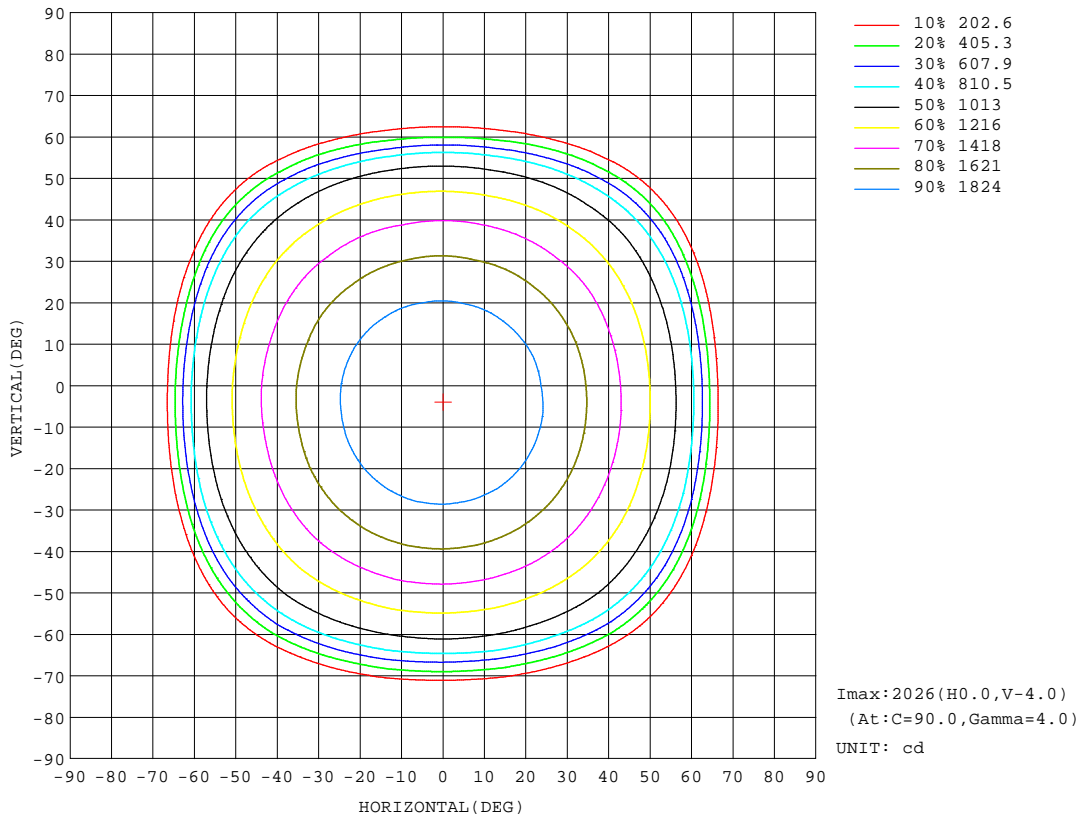
REFLECTANCE										
Ceiling	0.8	0.8	0.8	0.7	0.7	0.7	0.5	0.5	0.5	0
Walls	0.7	0.5	0.3	0.7	0.5	0.3	0.7	0.5	0.3	0
Working plane	0.2	0.2	0.2	0.2	0.2	0.2	0.2	0.2	0.2	0
ROOM INDEX	UTILIZATION FACTORS (PERCENT) $k(RI) \times RCR = 5$									
k = 0.60	58	48	41	58	47	41	56	47	41	35
0.80	69	59	52	68	58	52	66	57	51	45
1.00	78	68	62	77	68	62	75	69	61	55
1.25	85	76	70	84	76	70	81	74	69	63
1.50	90	82	76	88	81	75	85	79	74	68
2.00	96	89	84	94	88	83	91	86	82	75
2.50	99	93	88	97	92	87	94	89	85	78
3.00	102	97	92	100	95	91	96	92	89	81
4.00	105	101	97	103	99	96	99	96	93	85
5.00	107	103	100	105	101	98	100	98	95	87
ROOM INDEX	UF(total)									Direct
According to DIN EN 13032-2 2004			Suspended				SHRNOM = 1.25			

C Range: 0 - 360DEG
 C Interval: 15.0DEG
 Test Speed: HIGH
 Temperature: 25.3DEG
 Operators:
 Test Date: 2021-03-12

g Range: 0 - 180DEG
 g Interval: 1.0DEG
 Test System: EVERFINE GO-2000B_V1 SYSTEM V2.00.426
 Humidity: 65.0%
 Test Distance: 8.100m [K=1.1235]
 Remarks:

ISOCANDELA DIAGRAM

Test:U:120.17V I:0.3334A P:39.709W PF:0.9912 Freq:59.98Hz Lamp Flux:5200x1 lm		
NAME:	TYPE:	WEIGHT:
SPEC.:	DIM.:	SERIAL No.:
MFR.: ASD LIGHTNG CORP	SUR.:	Shielding Angle:

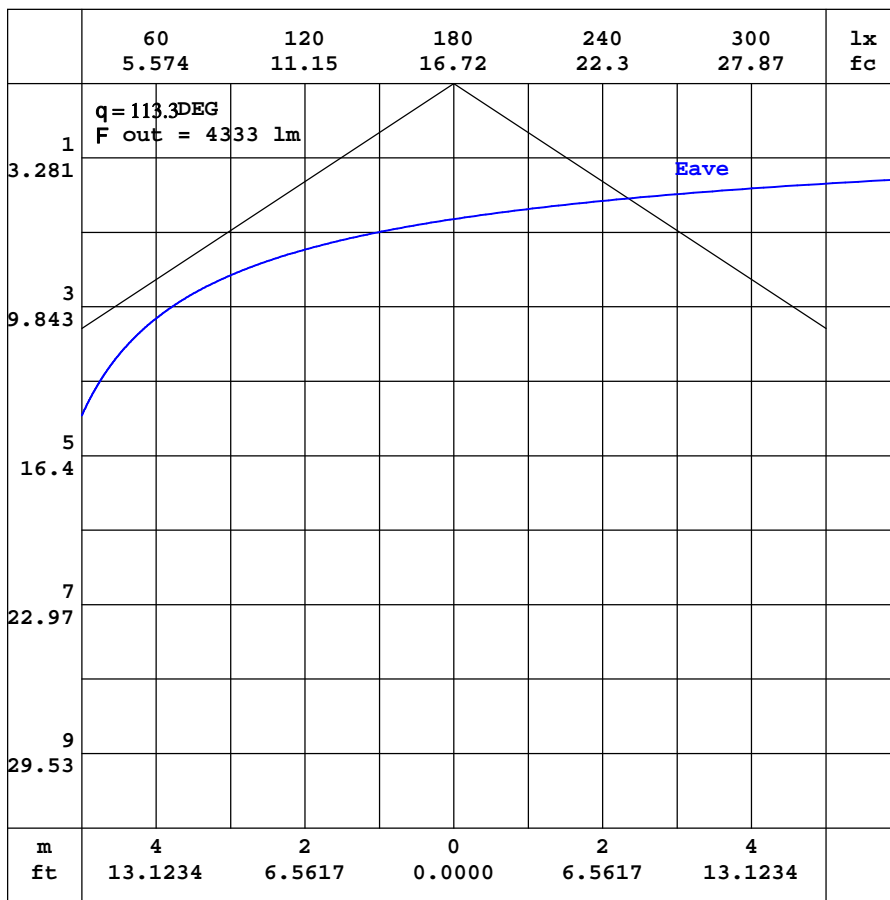


C Range: 0 - 360DEG
 C Interval: 15.0DEG
 Test Speed: HIGH
 Temperature:25.3DEG
 Operators:
 Test Date:2021-03-12

g Range: 0 - 180DEG
 g Interval: 1.0DEG
 Test System:EVERFINE GO-2000B_V1 SYSTEM V2.00.426
 Humidity:65.0%
 Test Distance:8.100m [K=1.1235]
 Remarks:

AAI CURVES

Test:U:120.17V I:0.3334A P:39.709W PF:0.9912 Freq:59.98Hz Lamp Flux:5200x1 lm		
NAME:	TYPE:	WEIGHT:
SPEC.:	DIM.:	SERIAL No.:
MFR.: ASD LIGHTNG CORP	SUR.:	Shielding Angle:



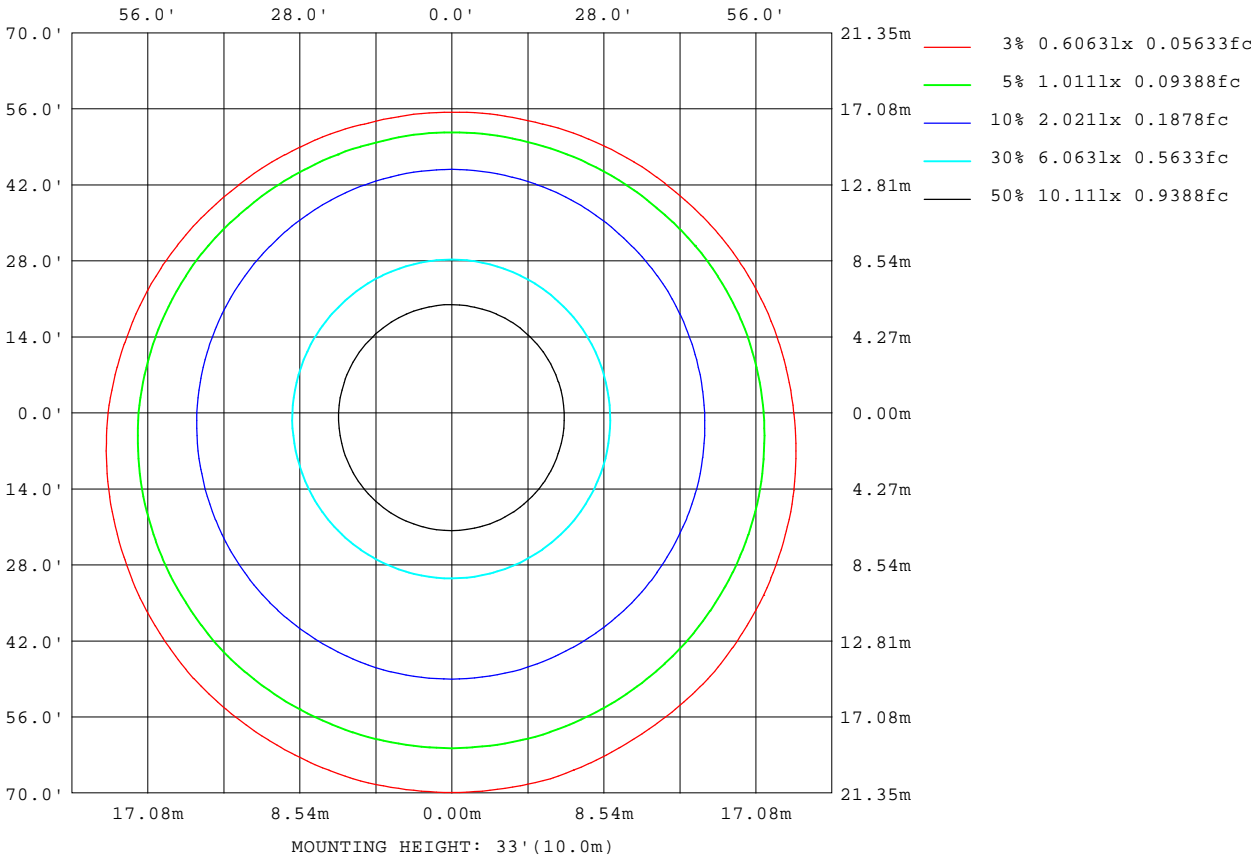
Note:The Curves indicate the illuminated area and the average illumination when the luminaire is at different distance.

C Range: 0 - 360DEG
 C Interval: 15.0DEG
 Test Speed: HIGH
 Temperature:25.3DEG
 Operators:
 Test Date:2021-03-12

g Range: 0 - 180DEG
 g Interval: 1.0DEG
 Test System:EVERFINE GO-2000B_V1 SYSTEM V2.00.426
 Humidity:65.0%
 Test Distance:8.100m [K=1.1235]
 Remarks:

ISOLUX DIAGRAM

Test:U:120.17V I:0.3334A P:39.709W PF:0.9912 Freq:59.98Hz Lamp Flux:5200x1 lm		
NAME:	TYPE:	WEIGHT:
SPEC.:	DIM.:	SERIAL No.:
MFR.: ASD LIGHTNG CORP	SUR.:	Shielding Angle:



C Range: 0 - 360DEG
 C Interval: 15.0DEG
 Test Speed: HIGH
 Temperature: 25.3DEG
 Operators:
 Test Date: 2021-03-12

g Range: 0 - 180DEG
 g Interval: 1.0DEG
 Test System: EVERFINE GO-2000B_V1 SYSTEM V2.00.426
 Humidity: 65.0%
 Test Distance: 8.100m [K=1.1235]
 Remarks:

LED Avg.L Report

Test:U:120.17V I:0.3334A P:39.709W PF:0.9912 Freq:59.98Hz Lamp Flux:5200x1 lm		
NAME:	TYPE:	WEIGHT:
SPEC.:	DIM.:	SERIAL No.:
MFR.: ASD LIGHTNG CORP	SUR.:	Shielding Angle:

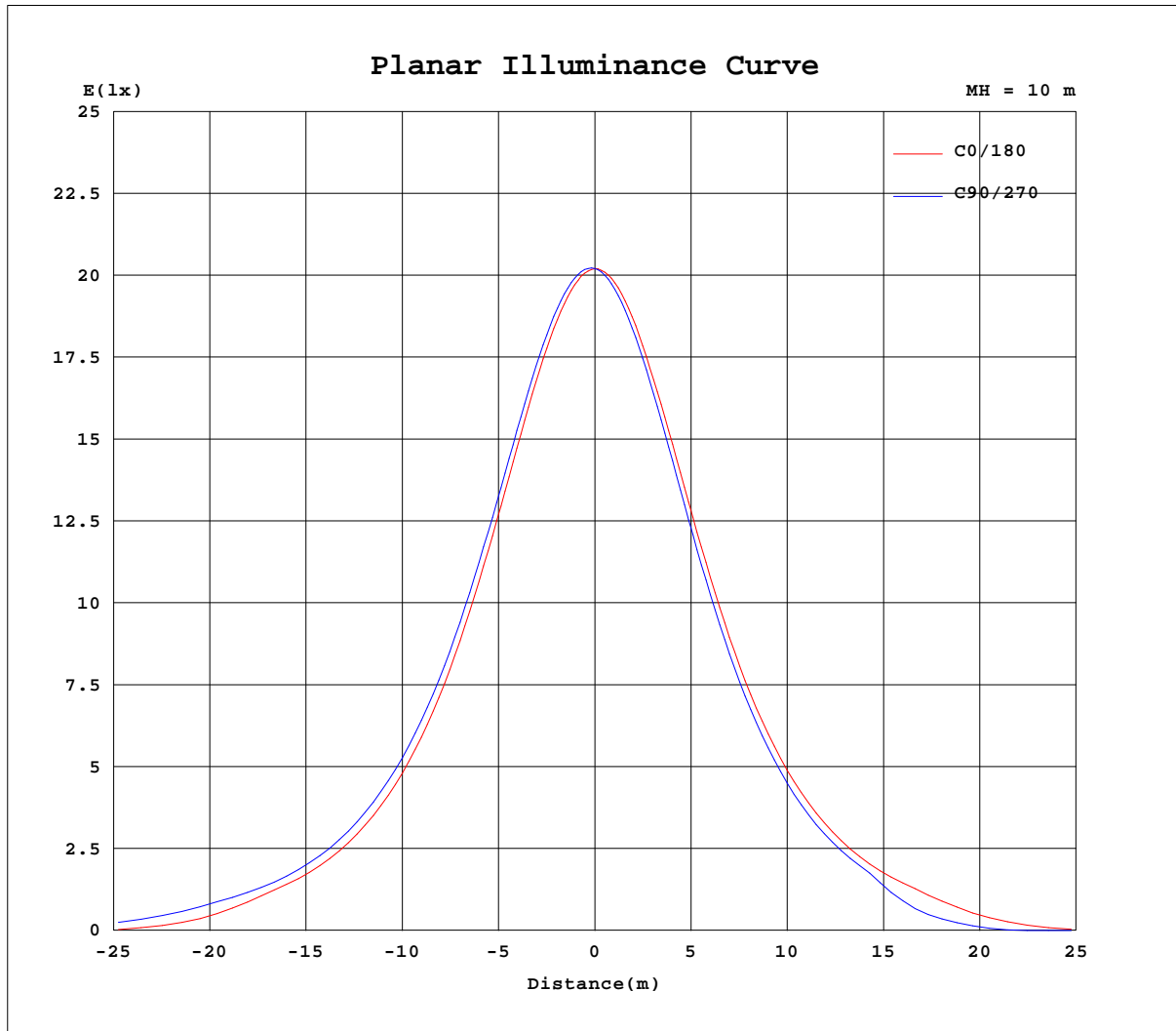
AvgL	cd/m2
L_0~180(65)av	8205
L_0~180(75)av	114
L_0~180(85)av	232
L_90~270(65)av	9569
L_90~270(75)av	237
L_90~270(85)av	238
L_45(65)av	9013
L_45(75)av	128
L_45(85)av	235

Standard: GB/T 29293-2012

C Range: 0 - 360DEG
 C Interval: 15.0DEG
 Test Speed: HIGH
 Temperature:25.3DEG
 Operators:
 Test Date:2021-03-12

g Range: 0 - 180DEG
 g Interval: 1.0DEG
 Test System:EVERFINE GO-2000B_V1 SYSTEM V2.00.426
 Humidity:65.0%
 Test Distance:8.100m [K=1.1235]
 Remarks:

Planar Illuminance Curve



C Range: 0 - 360DEG
 C Interval: 15.0DEG
 Test Speed: HIGH
 Temperature: 25.3DEG
 Operators:
 Test Date: 2021-03-12

g Range: 0 - 180DEG
 g Interval: 1.0DEG
 Test System: EVERFINE GO-2000B_V1 SYSTEM V2.00.426
 Humidity: 65.0%
 Test Distance: 8.100m [K=1.1235]
 Remarks:

LUMINOUS DISTRIBUTION INTENSITY DATA

Test:U:120.17V I:0.3334A P:39.709W PF:0.9912 Freq:59.98Hz Lamp Flux:5200x1 lm		
NAME:	TYPE:	WEIGHT:
SPEC.:	DIM.:	SERIAL No.:
MFR.: ASD LIGHTNG CORP	SUR.:	Shielding Angle:

Table--1

UNIT: cd

C(DEG) g (DEG)	0	15	30	45	60	75	90	105	120	135	150	165	180	195	210	225	240	255	270
0	2021	2021	2022	2022	2021	2021	2021	2020	2021	2019	2020	2019	2021	2021	2022	2022	2021	2021	2021
5	2008	2014	2016	2021	2023	2025	2026	2025	2024	2021	2019	2016	2015	2009	2005	2002	1999	1998	1997
10	1980	1989	1998	2005	2011	2014	2014	2013	2009	2005	1999	1994	1988	1979	1972	1964	1960	1956	1955
15	1937	1949	1959	1969	1979	1984	1985	1984	1978	1973	1965	1953	1945	1934	1926	1915	1908	1902	1900
20	1877	1893	1906	1919	1929	1938	1938	1939	1933	1927	1913	1898	1889	1878	1864	1849	1842	1832	1830
25	1802	1824	1839	1854	1867	1874	1876	1878	1870	1860	1845	1830	1817	1800	1783	1767	1757	1749	1747
30	1714	1736	1754	1775	1788	1798	1804	1800	1793	1781	1765	1746	1731	1709	1691	1670	1658	1648	1649
35	1610	1634	1657	1677	1693	1708	1712	1710	1702	1687	1668	1646	1628	1603	1584	1560	1551	1539	1537
40	1491	1519	1546	1571	1588	1604	1609	1607	1596	1580	1558	1534	1511	1485	1460	1438	1426	1412	1413
45	1361	1390	1418	1447	1469	1484	1493	1489	1478	1460	1433	1406	1385	1350	1325	1298	1284	1274	1274
50	1214	1245	1278	1309	1335	1355	1362	1360	1343	1323	1295	1266	1240	1203	1172	1141	1127	1116	1116
55	1052	1090	1121	1155	1182	1205	1213	1212	1194	1173	1143	1112	1079	1040	1004	972	952	934	930
60	852	915	950	991	1016	1042	1054	1049	1027	1008	972	936	869	773	663	542	456	404	391
65	334	458	566	669	714	773	780	774	729	684	582	471	359	225	134	77.6	49.5	29.4	28.8
70	13.4	29.0	74.4	152	226	302	320	307	238	164	80.6	27.1	13.0	6.25	3.61	2.96	2.90	2.90	2.90
75	3.03	3.09	3.20	3.95	6.08	9.03	9.68	8.89	5.88	3.88	3.19	3.09	2.87	2.78	2.68	2.63	2.59	2.58	2.58
80	2.75	2.81	2.89	2.94	2.98	3.00	3.03	3.02	3.00	2.96	2.90	2.82	2.53	2.40	2.28	2.16	2.08	2.04	2.05
85	2.13	2.30	2.43	2.56	2.65	2.69	2.72	2.71	2.68	2.61	2.48	2.33	1.92	1.73	1.59	1.47	1.43	1.42	1.43
90	1.44	1.64	1.69	1.82	1.91	2.00	2.03	2.03	1.98	1.89	1.76	1.70	1.17	1.27	1.40	1.55	1.65	1.74	1.77
95	2.18	1.98	1.83	1.67	1.59	1.52	1.51	1.53	1.62	1.73	1.89	2.02	1.84	2.01	2.16	2.34	2.46	2.56	2.59
100	3.10	2.86	2.68	2.50	2.38	2.30	2.29	2.31	2.41	2.52	2.70	2.88	2.67	2.89	3.07	3.27	3.41	3.54	3.57
105	4.13	3.86	3.66	3.46	3.34	3.24	3.22	3.24	3.35	3.47	3.68	3.87	3.67	3.91	4.12	4.34	4.51	4.64	4.66
110	5.24	4.96	4.76	4.53	4.40	4.29	4.27	4.29	4.40	4.54	4.74	4.96	4.76	5.00	5.22	5.41	5.56	5.69	5.72
115	6.32	6.07	5.87	5.66	5.52	5.40	5.40	5.40	5.52	5.64	5.86	6.05	5.81	6.04	6.25	6.44	6.60	6.71	6.75
120	7.42	7.15	6.94	6.73	6.61	6.49	6.48	6.48	6.59	6.72	6.91	7.12	6.87	7.10	7.30	7.50	7.64	7.75	7.78
125	8.43	8.17	8.01	7.79	7.66	7.54	7.53	7.54	7.64	7.76	7.98	8.15	7.89	8.10	8.31	8.49	8.62	8.69	8.77
130	9.46	9.21	9.01	8.78	8.64	8.58	8.59	8.55	8.63	8.76	8.97	9.15	8.87	9.09	9.27	9.41	9.54	9.65	9.73
135	10.4	10.1	9.92	9.73	9.60	9.54	9.57	9.50	9.56	9.67	9.83	10.0	9.76	9.94	10.1	10.2	10.3	10.4	10.5
140	11.1	10.9	10.7	10.6	10.5	10.4	10.4	10.3	10.4	10.5	10.6	10.8	10.5	10.7	10.8	11.0	11.0	11.2	11.2
145	11.9	11.7	11.5	11.3	11.2	11.2	11.3	11.2	11.2	11.3	11.5	11.7	11.3	11.5	11.7	11.8	11.9	12.0	12.2
150	12.8	12.6	12.4	12.3	12.2	12.2	12.2	12.1	12.2	12.3	12.5	12.6	12.2	12.4	12.5	12.7	12.7	12.8	12.9
155	13.6	13.4	13.3	13.2	13.2	13.2	13.2	13.1	13.1	13.2	13.3	13.4	13.1	13.2	13.3	13.4	13.4	13.5	13.6
160	14.2	14.0	14.0	14.0	14.0	14.0	14.0	13.8	13.9	13.9	14.0	14.1	13.8	13.9	14.0	14.0	14.1	14.1	14.2
165	14.8	14.7	14.6	14.6	14.7	14.7	14.6	14.5	14.5	14.6	14.6	14.7	14.4	14.6	14.6	14.7	14.7	14.8	14.9
170	15.3	15.2	15.2	15.2	15.2	15.3	15.2	15.1	15.1	15.1	15.2	15.3	15.0	15.2	15.2	15.2	15.2	15.3	15.3
175	15.6	15.6	15.6	15.7	15.7	15.6	15.5	15.5	15.5	15.6	15.7	15.7	15.4	15.5	15.6	15.7	15.6	15.6	15.7
180	15.7	15.8	15.8	15.9	15.8	15.8	15.8	15.8	15.9	15.9	15.9	15.9	15.8	15.8	15.8	15.9	15.8	15.8	15.8

C Range: 0 - 360DEG
 C Interval: 15.0DEG
 Test Speed: HIGH
 Temperature:25.3DEG
 Operators:
 Test Date:2021-03-12

g Range: 0 - 180DEG
 g Interval: 1.0DEG
 Test System:EVERFINE GO-2000B_V1 SYSTEM V2.00.426
 Humidity:65.0%
 Test Distance:8.100m [K=1.1235]
 Remarks:

LUMINOUS DISTRIBUTION INTENSITY DATA

Test:U:120.17V I:0.3334A P:39.709W PF:0.9912 Freq:59.98Hz Lamp Flux:5200x1 lm		
NAME:	TYPE:	WEIGHT:
SPEC.:	DIM.:	SERIAL No.:
MFR.: ASD LIGHTNG CORP	SUR.:	Shielding Angle:

Table--2

UNIT: cd

C(DEG) g (DEG)	285	300	315	330	345														
0	2020	2021	2019	2020	2019														
5	1996	1996	1999	2001	2004														
10	1955	1957	1962	1966	1972														
15	1898	1903	1909	1916	1927														
20	1829	1835	1842	1853	1865														
25	1744	1752	1758	1774	1788														
30	1645	1654	1661	1678	1694														
35	1536	1543	1550	1569	1590														
40	1412	1418	1426	1448	1468														
45	1269	1278	1288	1309	1335														
50	1111	1120	1131	1156	1185														
55	935	947	961	989	1018														
60	410	472	554	667	771														
65	32.6	60.6	93.2	153	238														
70	2.94	2.99	3.11	4.13	7.17														
75	2.61	2.66	2.75	2.84	2.92														
80	2.08	2.15	2.27	2.41	2.55														
85	1.45	1.47	1.55	1.68	1.84														
90	1.79	1.70	1.62	1.49	1.35														
95	2.60	2.52	2.41	2.23	2.07														
100	3.58	3.48	3.35	3.15	2.96														
105	4.65	4.55	4.42	4.20	3.98														
110	5.73	5.64	5.49	5.28	5.07														
115	6.75	6.65	6.51	6.33	6.12														
120	7.77	7.69	7.57	7.36	7.17														
125	8.75	8.64	8.54	8.36	8.16														
130	9.70	9.53	9.42	9.28	9.12														
135	10.5	10.3	10.2	10.1	9.91														
140	11.2	11.1	11.0	10.8	10.7														
145	12.2	12.0	11.9	11.7	11.6														
150	13.0	12.9	12.8	12.6	12.5														
155	13.7	13.6	13.5	13.4	13.3														
160	14.3	14.3	14.2	14.1	14.0														
165	14.9	14.9	14.8	14.7	14.7														
170	15.4	15.4	15.4	15.3	15.3														
175	15.7	15.8	15.8	15.8	15.7														
180	15.8	15.9	15.9	15.9	15.9														

C Range: 0 - 360DEG
 C Interval: 15.0DEG
 Test Speed: HIGH
 Temperature:25.3DEG
 Operators:
 Test Date:2021-03-12

g Range: 0 - 180DEG
 g Interval: 1.0DEG
 Test System:EVERFINE GO-2000B_V1 SYSTEM V2.00.426
 Humidity:65.0%
 Test Distance:8.100m [K=1.1235]
 Remarks: