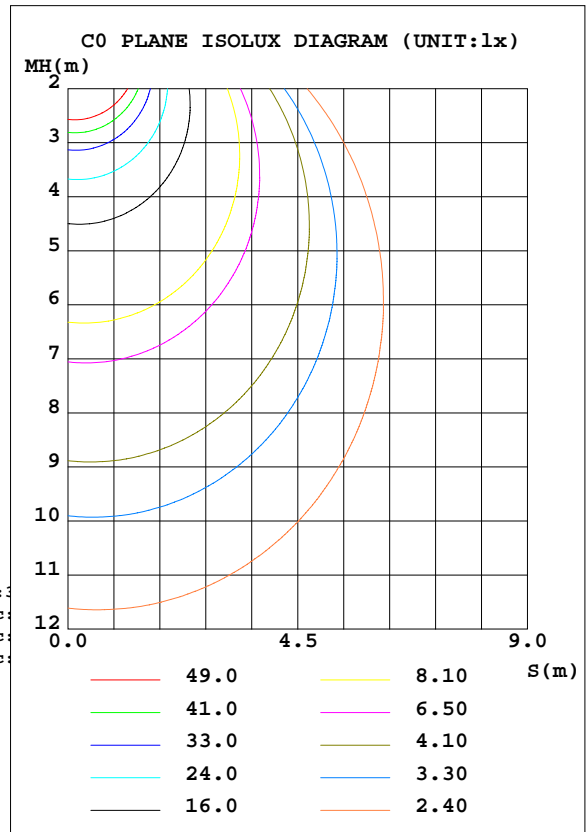
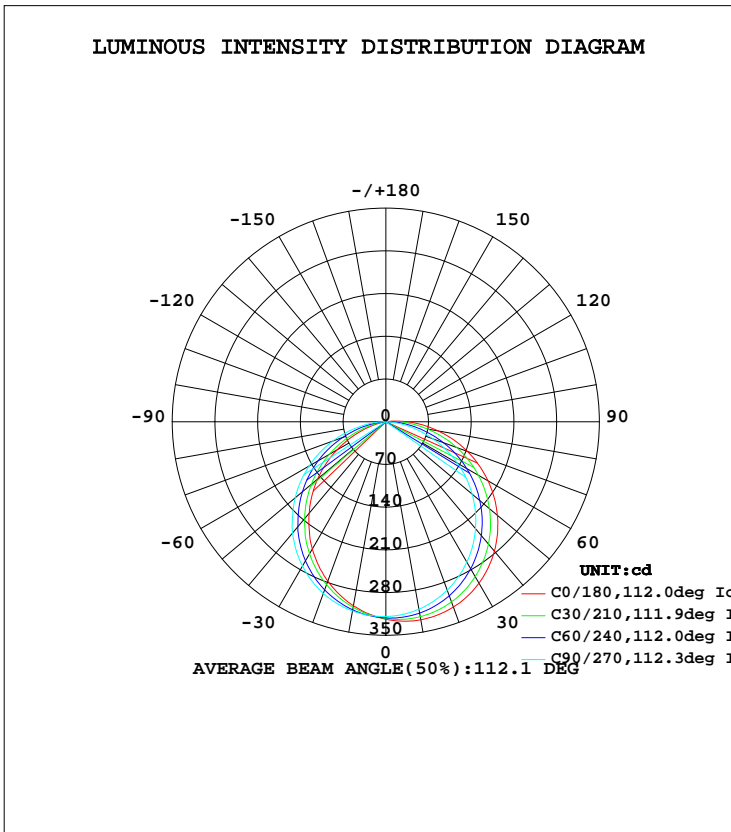


LUMINAIRE PHOTOMETRIC TEST REPORT

Test:U:120.0V I:0.1430A P:15.89W PF:0.9258 Lamp Flux:1364x1 lm		
NAME: ASD-MPR-7D15CC-WH/BK 4000k	TYPE:LED	WEIGHT:
SPEC.:	DIM.:	SERIAL No.:
MFR.: ASD Lighting corp	SUR.:	PROTECTION ANGLE:

DATA OF LAMP		PHOTOMETRIC DATA Eff: 85.84 lm/W			
MODEL	ASD-MPR-7D15CC-WH/BK	I <sub>max</sub> (cd)	329.5	S/MH(C0/180)	1.12
NOMINAL POWER(W)	15	LOR(%)	100.0	S/MH(C90/270)	1.27
RATED VOLTAGE(V)	120	TOTAL FLUX(lm)	1364	η UP, DN(C0-180)	1.1,49.2
NOMINAL FLUX(lm)	1364	CIE CLASS	DIRECT	η UP, DN(C180-360)	1.2,48.4
LAMPS INSIDE	1	η up(%)	2.4	CIBSE SHR NOM	1.25
TEST VOLTAGE(V)	120	η down(%)	97.6	CIBSE SHR MAX	1.35



C Range: 0 - 360DEG  
 C Interval: 15.0DEG  
 Test Speed: HIGH  
 Temperature:25.3DEG  
 Operators:  
 Test Date:2022-04-13

γ Range: 0 - 180DEG  
 γ Interval: 1.0DEG  
 Test System:EVERFINE GO-2000B\_V1 SYSTEM V2.0.291  
 Humidity:65.0%  
 Test Distance:7.500m [K=1.0000]  
 Remarks:

## ZONAL FLUX DIAGRAM

## ZONAL FLUX DIAGRAM:

$\gamma$	C0	C45	C90	C135	C180	C225	C270	C315	$\gamma$	$\Phi$ zone	$\Phi$ total	$\Phi$ lum,lamp
10	329.4	321.6	311.9	306.1	306.2	310.7	314.9	318.9	0- 10	30.30	30.30	3.2,3.2
20	323.3	309.1	293.8	283.5	278.0	288.3	299.4	307.9	10- 20	86.73	117.0	12.4,12.4
30	305.3	286.0	265.3	251.6	241.1	256.0	273.2	286.2	20- 30	131.3	248.4	26.2,26.2
40	276.7	253.2	228.8	210.7	195.8	215.7	237.9	254.5	30- 40	158.3	406.6	42.9,42.9
50	238.7	211.0	184.7	164.8	146.0	168.8	193.9	214.0	40- 50	164.0	570.6	60.2,60.2
60	193.2	163.9	135.2	114.2	92.85	117.5	145.4	167.2	50- 60	148.3	719.0	75.9,75.9
70	142.2	112.3	82.12	61.55	40.39	63.59	92.79	115.4	60- 70	113.7	832.7	87.9,87.9
80	87.09	59.10	32.48	16.76	3.861	17.95	41.35	61.26	70- 80	67.14	899.8	95,95
90	35.04	14.71	2.565	2.577	3.085	3.054	4.094	16.22	80- 90	25.37	925.2	97.6,97.6
100	2.559	2.611	2.630	2.657	3.181	3.116	3.066	3.046	90-100	5.812	931.0	98.3,98.3
110	2.665	2.696	2.727	2.761	3.285	3.185	3.131	3.100	100-110	3.068	934.1	98.6,98.6
120	2.792	2.800	2.838	2.873	3.385	3.273	3.200	3.173	110-120	2.968	937.0	98.9,98.9
130	2.919	2.916	2.977	3.016	3.501	3.362	3.278	3.239	120-130	2.773	939.8	99.2,99.2
140	3.081	3.089	3.150	3.216	3.605	3.458	3.382	3.327	130-140	2.490	942.3	99.5,99.5
150	3.293	3.301	3.370	3.428	3.721	3.593	3.497	3.455	140-150	2.115	944.4	99.7,99.7
160	3.539	3.547	3.581	3.613	3.840	3.705	3.647	3.612	150-160	1.638	946.1	99.9,99.9
170	3.774	3.744	3.751	3.770	3.921	3.828	3.767	3.751	160-170	1.051	947.1	100,100
180	3.951	3.901	3.844	3.863	3.951	3.894	3.847	3.863	170-180	0.3655	947.5	100,100
DEG	LUMINOUS INTENSITY:cd									UNIT:lm		

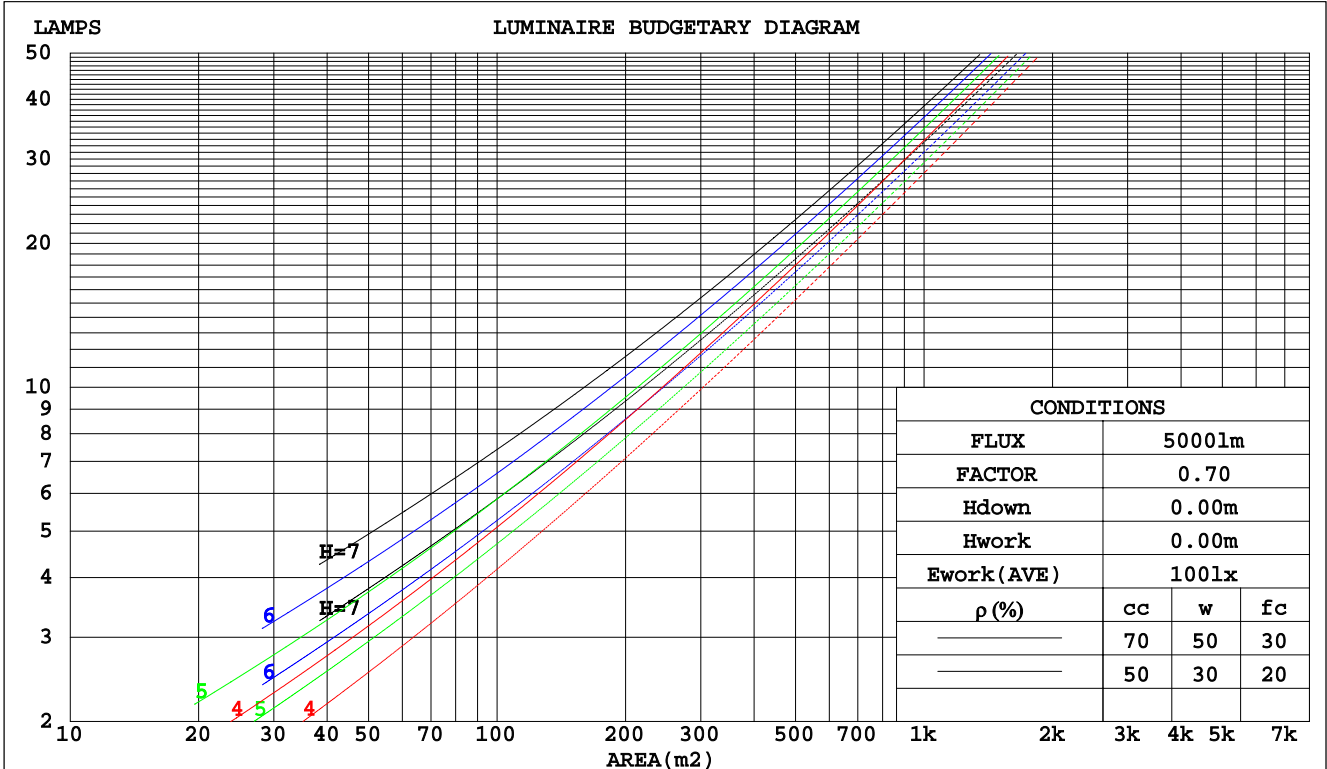
C Range: 0 - 360DEG  
C Interval: 15.0DEG  
Test Speed: HIGH  
Temperature:25.3DEG  
Operators:  
Test Date:2022-04-13

$\gamma$  Range: 0 - 180DEG  
 $\gamma$  Interval: 1.0DEG  
Test System:EVERFINE GO-2000B\_V1 SYSTEM V2.0.291  
Humidity:65.0%  
Test Distance:7.500m [K=1.0000]  
Remarks:

CU AND LUMINAIRE BUDGETARY ESTIMATE DIAGRAM

Test:U:120.0V I:0.1430A P:15.89W PF:0.9258 Lamp Flux:1364x1 lm		
NAME: ASD-MPR-7D15CC-WH/BK 4000k	TYPE:LED	WEIGHT:
SPEC.:	DIM.:	SERIAL No.:
MFR.: ASD Lighting corp	SUR.:	PROTECTION ANGLE:

pcc	80%			70%			50%			30%			10%			0
	50%	30%	10%	50%	30%	10%	50%	30%	10%	50%	30%	10%	50%	30%	10%	0
pw																0
pfc																0
RCR	RCR:Room Cavity Ratio      Coefficients of Utilization(CU)															
0.0	1.18	1.18	1.18	1.15	1.15	1.15	1.10	1.10	1.10	1.05	1.05	1.05	.00	.00	.00	.98
1.0	1.03	.98	.94	1.00	.96	.93	.96	.92	.89	.91	.89	.86	.87	.85	.83	.81
2.0	.89	.82	.77	.87	.81	.76	.83	.78	.73	.80	.75	.71	.76	.73	.69	.67
3.0	.78	.70	.64	.77	.69	.63	.73	.67	.61	.70	.65	.60	.67	.63	.59	.56
4.0	.69	.61	.54	.68	.60	.53	.65	.58	.52	.62	.56	.51	.60	.55	.50	.48
5.0	.62	.53	.46	.61	.52	.46	.58	.51	.45	.56	.50	.44	.54	.48	.44	.41
6.0	.56	.47	.40	.55	.46	.40	.53	.45	.39	.51	.44	.39	.49	.43	.38	.36
7.0	.51	.42	.35	.50	.41	.35	.48	.40	.35	.46	.39	.34	.45	.39	.34	.32
8.0	.46	.38	.32	.45	.37	.31	.44	.36	.31	.42	.36	.31	.41	.35	.30	.28
9.0	.42	.34	.28	.42	.34	.28	.40	.33	.28	.39	.32	.28	.38	.32	.27	.26
10.0	.39	.31	.26	.38	.31	.26	.37	.30	.25	.36	.30	.25	.35	.29	.25	.23



C Range: 0 - 360DEG  
 C Interval: 15.0DEG  
 Test Speed: HIGH  
 Temperature: 25.3DEG  
 Operators:  
 Test Date: 2022-04-13

γ Range: 0 - 180DEG  
 γ Interval: 1.0DEG  
 Test System: EVERFINE GO-2000B\_V1 SYSTEM V2.0.291  
 Humidity: 65.0%  
 Test Distance: 7.500m [K=1.0000]  
 Remarks:

WEC AND CCEC

Test:U:120.0V I:0.1430A P:15.89W PF:0.9258 Lamp Flux:1364x1 lm		
NAME: ASD-MPR-7D15CC-WH/BK 4000k	TYPE:LED	WEIGHT:
SPEC.:	DIM.:	SERIAL No.:
MFR.: ASD Lighting corp	SUR.:	PROTECTION ANGLE:

ρcc	80%			70%			50%			30%			10%			0
ρw	50%	30%	10%	50%	30%	10%	50%	30%	10%	50%	30%	10%	50%	30%	10%	0
ρfc	20%			20%			20%			20%			20%			0
RCR	RCR:Room Cavity Ratio						Wall Exitance Coefficients(WEC)									
0.0																
1.0	.318	.181	.057	.311	.177	.056	.296	.170	.054	.282	.163	.052	.270	.157	.050	
2.0	.296	.162	.050	.289	.159	.049	.276	.153	.048	.264	.148	.046	.253	.143	.045	
3.0	.272	.145	.043	.266	.143	.043	.255	.138	.042	.244	.134	.041	.234	.130	.040	
4.0	.251	.130	.038	.245	.128	.038	.235	.125	.037	.225	.121	.036	.216	.118	.036	
5.0	.231	.118	.034	.226	.116	.034	.217	.113	.033	.209	.110	.033	.201	.107	.032	
6.0	.214	.107	.031	.210	.106	.030	.202	.103	.030	.194	.101	.030	.187	.098	.029	
7.0	.199	.098	.028	.195	.097	.028	.188	.095	.027	.181	.093	.027	.174	.091	.027	
8.0	.186	.091	.026	.182	.090	.025	.176	.088	.025	.169	.086	.025	.164	.084	.024	
9.0	.174	.084	.024	.171	.083	.023	.165	.082	.023	.159	.080	.023	.154	.078	.023	
10.0	.164	.078	.022	.161	.078	.022	.155	.076	.021	.150	.075	.021	.145	.073	.021	

ρcc	80%			70%			50%			30%			10%			0
ρw	50%	30%	10%	50%	30%	10%	50%	30%	10%	50%	30%	10%	50%	30%	10%	0
ρfc	20%			20%			20%			20%			20%			0
RCR	RCR:Room Cavity Ratio						Ceiling Cavity Exitance Coefficients(CCEC)									
0.0	.208	.208	.208	.178	.178	.178	.122	.122	.122	.070	.070	.070	.022	.022	.022	
1.0	.199	.174	.152	.170	.149	.131	.116	.103	.090	.067	.059	.053	.021	.019	.017	
2.0	.191	.150	.116	.164	.129	.100	.112	.089	.070	.065	.052	.041	.021	.017	.013	
3.0	.183	.133	.092	.157	.114	.080	.108	.079	.056	.062	.046	.033	.020	.015	.011	
4.0	.176	.119	.076	.151	.103	.066	.104	.072	.047	.060	.042	.028	.019	.014	.009	
5.0	.168	.109	.065	.144	.094	.057	.099	.066	.040	.058	.039	.024	.019	.013	.008	
6.0	.161	.101	.058	.138	.087	.050	.095	.061	.035	.055	.036	.021	.018	.012	.007	
7.0	.154	.094	.052	.133	.081	.045	.092	.057	.032	.053	.034	.019	.017	.011	.006	
8.0	.148	.088	.047	.127	.076	.041	.088	.054	.029	.051	.032	.017	.017	.010	.006	
9.0	.141	.083	.044	.122	.072	.038	.084	.051	.027	.049	.030	.016	.016	.010	.005	
10.0	.136	.079	.041	.117	.069	.036	.081	.048	.025	.047	.029	.015	.015	.009	.005	

C Range: 0 - 360DEG  
 C Interval: 15.0DEG  
 Test Speed: HIGH  
 Temperature:25.3DEG  
 Operators:  
 Test Date:2022-04-13

γ Range: 0 - 180DEG  
 γ Interval: 1.0DEG  
 Test System:EVERFINE GO-2000B\_V1 SYSTEM V2.0.291  
 Humidity:65.0%  
 Test Distance:7.500m [K=1.0000]  
 Remarks:

UGR(Unified Glare Rating) Table

Test:U:120.0V I:0.1430A P:15.89W PF:0.9258 Lamp Flux:1364x1 lm		
NAME: ASD-MPR-7D15CC-WH/BK 4000k	TYPE:LED	WEIGHT:
SPEC.:	DIM.:	SERIAL No.:
MFR.: ASD Lighting corp	SUR.:	PROTECTION ANGLE:

ceiling/cavity	0.7	0.7	0.5	0.5	0.3	0.7	0.7	0.5	0.5	0.3
walls	0.5	0.3	0.5	0.3	0.3	0.5	0.3	0.5	0.3	0.3
working plane	0.2	0.2	0.2	0.2	0.2	0.2	0.2	0.2	0.2	0.2
Room dimensions	Viewed crosswise					Viewed endwise				
x = 2H y = 2H	18.0	19.5	18.3	19.8	20.0	16.6	18.1	16.9	18.4	18.6
3H	20.1	21.5	20.4	21.8	22.0	18.1	19.5	18.4	19.7	20.0
4H	21.1	22.4	21.4	22.7	23.0	18.6	20.0	19.0	20.3	20.6
6H	22.0	23.3	22.4	23.6	23.9	19.0	20.2	19.4	20.6	20.9
8H	22.5	23.7	22.9	24.0	24.4	19.1	20.3	19.5	20.6	21.0
12H	22.9	24.1	23.3	24.4	24.8	19.2	20.3	19.5	20.7	21.0
4H 2H	18.6	19.9	18.9	20.2	20.5	17.5	18.8	17.8	19.1	19.4
3H	20.8	22.0	21.2	22.3	22.7	19.2	20.3	19.5	20.6	21.0
4H	22.0	23.0	22.4	23.4	23.8	19.8	20.9	20.3	21.3	21.6
6H	23.1	24.1	23.6	24.5	24.9	20.3	21.3	20.8	21.7	22.1
8H	23.7	24.5	24.1	25.0	25.4	20.5	21.4	21.0	21.8	22.2
12H	24.2	25.0	24.7	25.5	25.9	20.6	21.4	21.1	21.8	22.3
8H 4H	22.2	23.1	22.7	23.5	23.9	20.4	21.3	20.8	21.7	22.1
6H	23.6	24.3	24.0	24.7	25.2	21.1	21.8	21.6	22.3	22.7
8H	24.3	24.9	24.8	25.4	25.9	21.3	22.0	21.8	22.5	23.0
12H	25.0	25.6	25.5	26.1	26.6	21.5	22.1	22.0	22.6	23.1
12H 4H	22.2	23.0	22.7	23.5	23.9	20.5	21.3	20.9	21.7	22.2
6H	23.6	24.3	24.1	24.7	25.2	21.3	21.9	21.8	22.4	22.9
8H	24.4	24.9	24.9	25.4	25.9	21.6	22.2	22.1	22.7	23.2
Variations with the observer position at spacings:										
S = 1.0H	+ 0.1 / - 0.1					+ 0.1 / - 0.2				
1.5H	+ 0.2 / - 0.2					+ 0.2 / - 0.4				
2.0H	+ 0.2 / - 0.3					+ 0.2 / - 0.5				

CIE Pub.117 Corrected 947.5 lm Total Lamp Luminous Flux. (8log(F/F0) = -0.2)

C Range: 0 - 360DEG  
 C Interval: 15.0DEG  
 Test Speed: HIGH  
 Temperature:25.3DEG  
 Operators:  
 Test Date:2022-04-13

γ Range: 0 - 180DEG  
 γ Interval: 1.0DEG  
 Test System:EVERFINE GO-2000B\_V1 SYSTEM V2.0.291  
 Humidity:65.0%  
 Test Distance:7.500m [K=1.0000]  
 Remarks:

## UTILIZATION FACTORS TABLE

Test:U:120.0V I:0.1430A P:15.89W PF:0.9258 Lamp Flux:1364x1 lm		
NAME: ASD-MPR-7D15CC-WH/BK 4000k	TYPE:LED	WEIGHT:
SPEC.:	DIM.:	SERIAL No.:
MFR.: ASD Lighting corp	SUR.:	PROTECTION ANGLE:

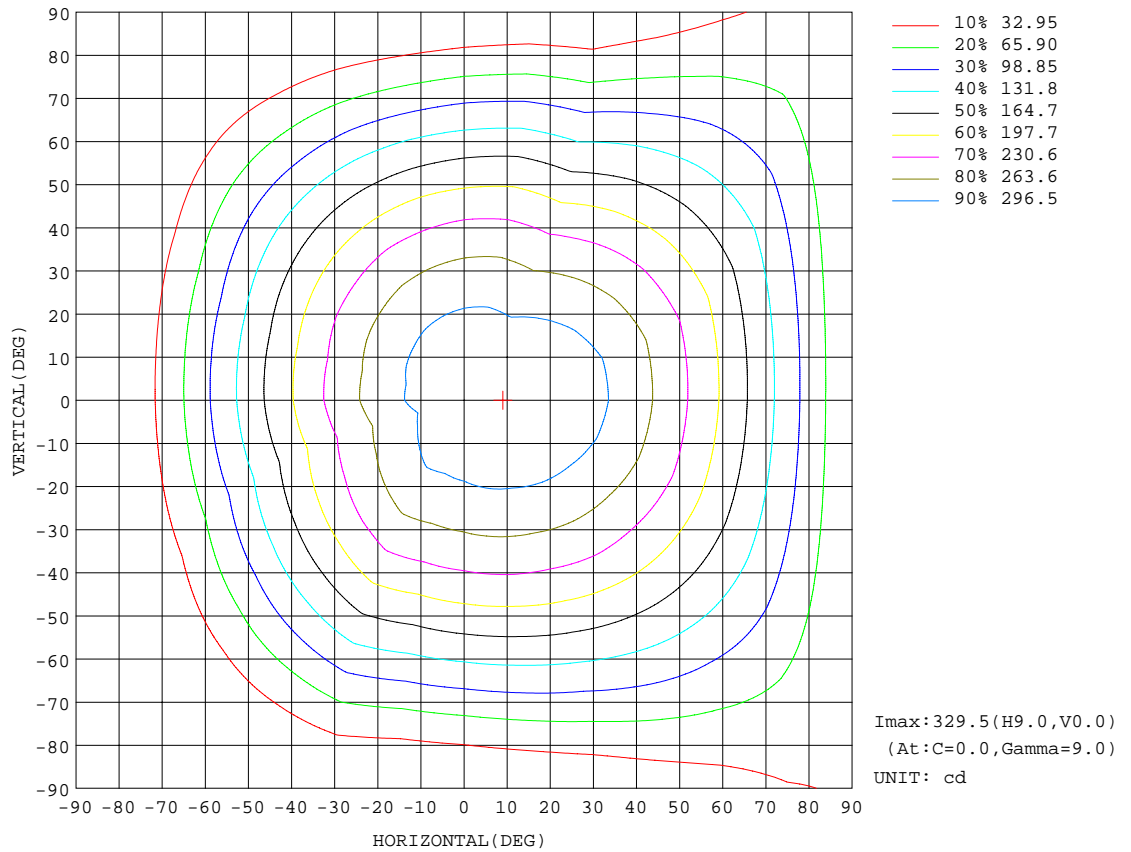
REFLECTANCE										
Ceiling	0.8	0.8	0.8	0.7	0.7	0.7	0.5	0.5	0.5	0
Walls	0.7	0.5	0.3	0.7	0.5	0.3	0.7	0.5	0.3	0
Working plane	0.2	0.2	0.2	0.2	0.2	0.2	0.2	0.2	0.2	0
ROOM INDEX	UTILIZATION FACTORS(PERCENT) $k(RI) \times RCR = 5$									
k = 0.60	56	45	38	56	45	38	54	44	37	31
0.80	66	55	47	65	54	47	63	53	47	39
1.00	75	63	56	73	63	56	71	64	55	48
1.25	82	71	64	80	70	63	77	69	62	55
1.50	87	77	70	85	76	69	82	74	68	60
2.00	94	85	78	92	84	77	88	81	76	67
2.50	98	90	83	95	88	82	91	85	80	71
3.00	101	94	88	99	92	87	94	89	85	75
4.00	105	99	94	103	97	93	98	94	90	80
5.00	108	103	98	105	100	96	100	96	93	83
ROOM INDEX	UF(total)									Direct
According to DIN EN 13032-2 2004			Suspended				SHRNOM = 1.25			

C Range: 0 - 360DEG  
C Interval: 15.0DEG  
Test Speed: HIGH  
Temperature:25.3DEG  
Operators:  
Test Date:2022-04-13

$\gamma$  Range: 0 - 180DEG  
 $\gamma$  Interval: 1.0DEG  
Test System:EVERFINE GO-2000B\_V1 SYSTEM V2.0.291  
Humidity:65.0%  
Test Distance:7.500m [K=1.0000]  
Remarks:

ISOCANDELA DIAGRAM

Test:U:120.0V I:0.1430A P:15.89W PF:0.9258 Lamp Flux:1364x1 lm		
NAME: ASD-MPR-7D15CC-WH/BK 4000k	TYPE:LED	WEIGHT:
SPEC.:	DIM.:	SERIAL No.:
MFR.: ASD Lighting corp	SUR.:	PROTECTION ANGLE:

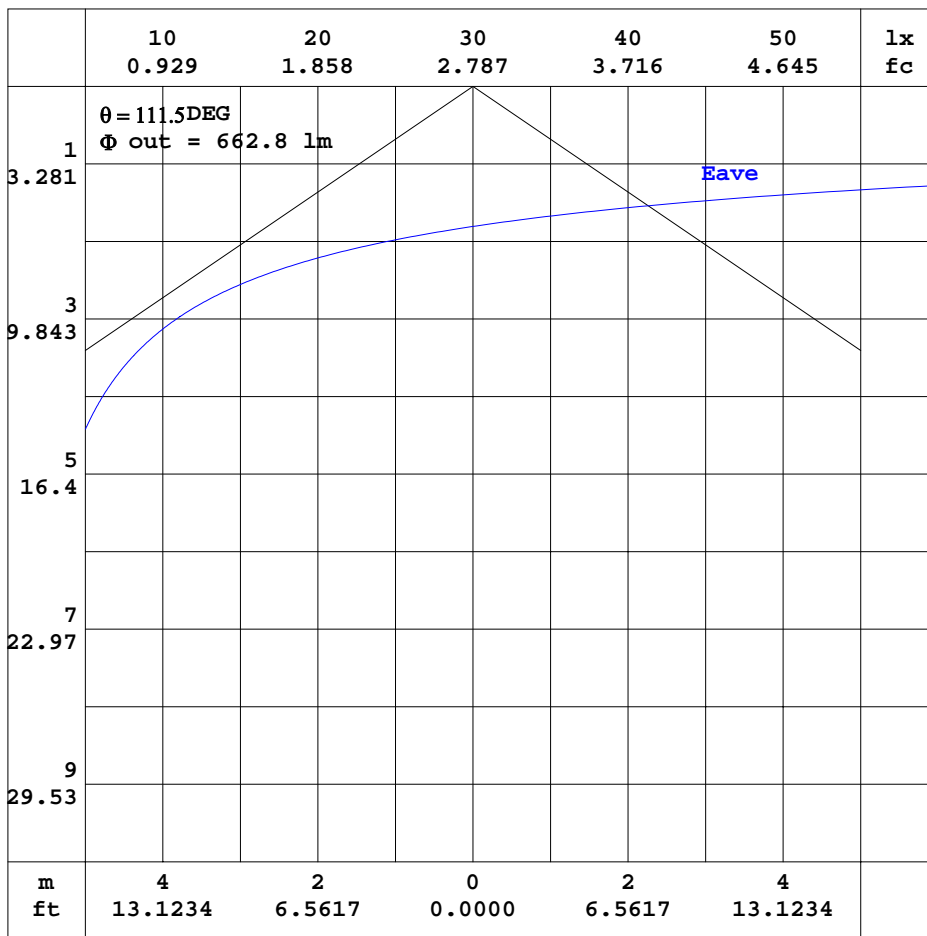


C Range: 0 - 360DEG  
 C Interval: 15.0DEG  
 Test Speed: HIGH  
 Temperature: 25.3DEG  
 Operators:  
 Test Date: 2022-04-13

γ Range: 0 - 180DEG  
 γ Interval: 1.0DEG  
 Test System: EVERFINE GO-2000B\_V1 SYSTEM V2.0.291  
 Humidity: 65.0%  
 Test Distance: 7.500m [K=1.0000]  
 Remarks:

AAI CURVES

Test:U:120.0V I:0.1430A P:15.89W PF:0.9258 Lamp Flux:1364x1 lm		
NAME: ASD-MPR-7D15CC-WH/BK 4000k	TYPE:LED	WEIGHT:
SPEC.:	DIM.:	SERIAL No.:
MFR.: ASD Lighting corp	SUR.:	PROTECTION ANGLE:



Note:The Curves indicate the illuminated area and the average illumination when the luminaire is at different distance.

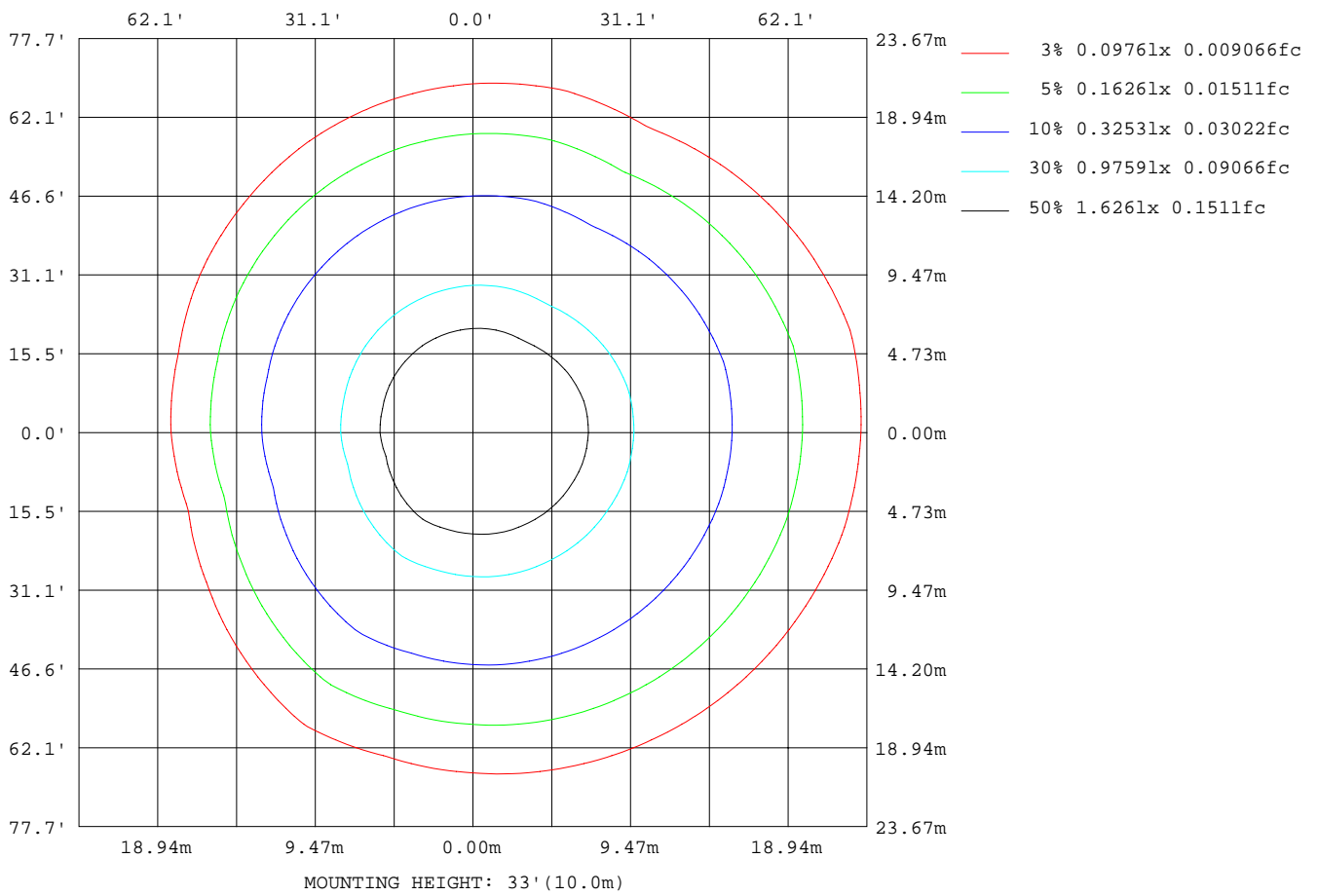
C Range: 0 - 360DEG  
 C Interval: 15.0DEG  
 Test Speed: HIGH  
 Temperature:25.3DEG  
 Operators:  
 Test Date:2022-04-13

$\gamma$  Range: 0 - 180DEG  
 $\gamma$  Interval: 1.0DEG  
 Test System:EVERFINE GO-2000B\_V1 SYSTEM V2.0.291  
 Humidity:65.0%  
 Test Distance:7.500m [K=1.0000]  
 Remarks:



ISOLUX DIAGRAM

Test:U:120.0V I:0.1430A P:15.89W PF:0.9258 Lamp Flux:1364x1 lm		
NAME: ASD-MPR-7D15CC-WH/BK 4000k	TYPE:LED	WEIGHT:
SPEC.:	DIM.:	SERIAL No.:
MFR.: ASD Lighting corp	SUR.:	PROTECTION ANGLE:



C Range: 0 - 360DEG  
 C Interval: 15.0DEG  
 Test Speed: HIGH  
 Temperature:25.3DEG  
 Operators:  
 Test Date:2022-04-13

γ Range: 0 - 180DEG  
 γ Interval: 1.0DEG  
 Test System:EVERFINE GO-2000B\_V1 SYSTEM V2.0.291  
 Humidity:65.0%  
 Test Distance:7.500m [K=1.0000]  
 Remarks:

## LED Avg.L Report

Test:U:120.0V I:0.1430A P:15.89W PF:0.9258 Lamp Flux:1364x1 lm		
NAME: ASD-MPR-7D15CC-WH/BK 4000k	TYPE:LED	WEIGHT:
SPEC.:	DIM.:	SERIAL No.:
MFR.: ASD Lighting corp	SUR.:	PROTECTION ANGLE:

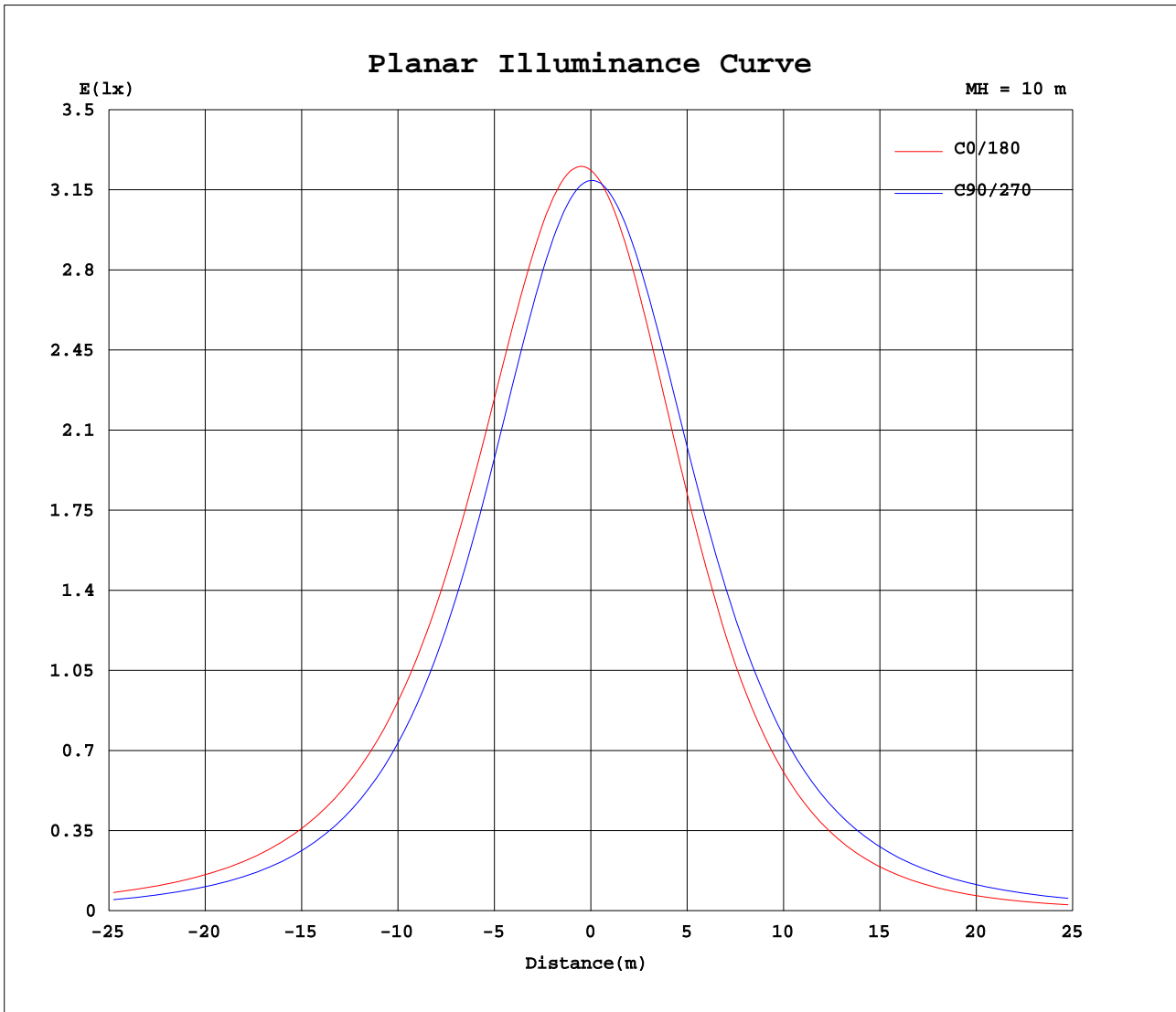
AvgL	cd/m2
L_0~180(65)av	2769
L_0~180(75)av	2595
L_0~180(85)av	3619
L_90~270(65)av	2707
L_90~270(75)av	2367
L_90~270(85)av	1887
L_45(65)av	2711
L_45(75)av	2407
L_45(85)av	2222

Standard: GB/T 29293-2012

C Range: 0 - 360DEG  
C Interval: 15.0DEG  
Test Speed: HIGH  
Temperature:25.3DEG  
Operators:  
Test Date:2022-04-13

$\gamma$  Range: 0 - 180DEG  
 $\gamma$  Interval: 1.0DEG  
Test System:EVERFINE GO-2000B\_V1 SYSTEM V2.0.291  
Humidity:65.0%  
Test Distance:7.500m [K=1.0000]  
Remarks:

Planar Illuminance Curve



C Range: 0 - 360DEG  
 C Interval: 15.0DEG  
 Test Speed: HIGH  
 Temperature: 25.3DEG  
 Operators:  
 Test Date: 2022-04-13

$\gamma$  Range: 0 - 180DEG  
 $\gamma$  Interval: 1.0DEG  
 Test System: EVERFINE GO-2000B\_V1 SYSTEM V2.0.291  
 Humidity: 65.0%  
 Test Distance: 7.500m [K=1.0000]  
 Remarks:

LUMINOUS DISTRIBUTION INTENSITY DATA

Test:U:120.0V I:0.1430A P:15.89W PF:0.9258 Lamp Flux:1364x1 lm		
NAME: ASD-MPR-7D15CC-WH/BK 4000k	TYPE:LED	WEIGHT:
SPEC.:	DIM.:	SERIAL No.:
MFR.: ASD Lighting corp	SUR.:	PROTECTION ANGLE:

Table--1

UNIT: cd

C( DEG) γ (DEG)	0	15	30	45	60	75	90	105	120	135	150	165	180	195	210	225	240	255	270
0	324	322	322	322	321	321	319	319	318	318	318	318	324	322	322	322	321	321	319
5	328	326	325	323	321	320	317	316	316	314	311	310	316	316	317	318	319	319	319
10	329	327	324	322	318	316	312	310	310	306	302	299	306	306	309	311	313	314	315
15	328	325	321	317	312	309	304	302	302	296	290	286	293	294	298	301	304	307	309
20	323	320	314	309	304	299	294	291	291	283	276	270	278	279	284	288	293	297	299
25	316	312	305	299	292	287	281	277	278	269	259	252	260	262	268	273	279	284	288
30	305	301	293	286	278	272	265	262	263	252	240	233	241	242	250	256	263	268	273
35	292	288	278	271	262	255	248	244	245	232	220	210	219	222	230	237	245	251	257
40	277	272	262	253	244	236	229	224	226	211	198	188	196	199	207	216	224	232	238
45	259	254	243	234	223	214	208	202	204	188	175	163	171	175	184	193	202	210	216
50	239	233	222	211	201	192	185	179	182	165	150	138	146	150	159	169	178	187	194
55	217	210	199	188	178	168	160	155	157	140	124	112	120	124	134	144	154	163	170
60	193	187	175	164	153	143	135	130	132	114	97.1	85.0	92.9	96.0	107	117	128	138	145
65	168	162	150	139	127	118	109	104	106	87.8	70.8	58.6	65.7	69.1	80.3	90.2	102	111	119
70	142	136	124	112	100	91.0	82.1	76.9	78.9	61.6	45.3	34.4	40.4	43.7	54.1	63.6	74.9	84.0	92.8
75	115	109	96.3	85.5	73.5	64.6	56.2	51.2	53.2	37.2	23.3	14.5	19.2	21.7	30.7	38.7	49.4	57.5	66.4
80	87.1	82.1	69.4	59.1	48.0	39.9	32.5	28.2	29.9	16.8	6.34	2.56	3.86	5.38	11.8	17.9	26.6	33.6	41.3
85	60.0	55.5	43.9	34.9	25.5	18.8	13.0	9.71	11.0	2.63	2.57	2.60	3.03	3.04	3.03	3.22	8.62	13.9	19.9
90	35.0	31.3	21.8	14.7	7.79	3.43	2.57	2.56	2.56	2.58	2.61	2.64	3.08	3.07	3.06	3.05	3.04	3.04	4.09
95	14.0	11.0	5.21	2.58	2.59	2.59	2.59	2.59	2.59	2.61	2.65	2.69	3.13	3.12	3.09	3.08	3.07	3.05	3.04
100	2.56	2.58	2.60	2.61	2.62	2.63	2.63	2.63	2.62	2.66	2.70	2.75	3.18	3.16	3.13	3.12	3.09	3.08	3.07
105	2.61	2.62	2.64	2.65	2.66	2.67	2.68	2.68	2.67	2.71	2.76	2.81	3.24	3.20	3.18	3.15	3.12	3.12	3.10
110	2.66	2.67	2.69	2.70	2.71	2.72	2.73	2.72	2.72	2.76	2.82	2.87	3.29	3.25	3.22	3.18	3.17	3.15	3.13
115	2.73	2.73	2.74	2.75	2.77	2.78	2.78	2.78	2.77	2.82	2.88	2.93	3.34	3.29	3.26	3.23	3.20	3.18	3.16
120	2.79	2.78	2.80	2.80	2.82	2.83	2.84	2.83	2.83	2.87	2.95	3.01	3.39	3.34	3.29	3.27	3.23	3.22	3.20
125	2.86	2.85	2.85	2.85	2.88	2.89	2.91	2.90	2.89	2.94	3.02	3.09	3.44	3.39	3.34	3.31	3.27	3.25	3.24
130	2.92	2.90	2.92	2.92	2.93	2.95	2.98	2.98	2.96	3.02	3.10	3.19	3.50	3.45	3.39	3.36	3.31	3.29	3.28
135	2.99	2.98	2.98	2.99	3.02	3.03	3.06	3.06	3.05	3.11	3.21	3.29	3.55	3.51	3.45	3.41	3.37	3.35	3.33
140	3.08	3.05	3.07	3.09	3.11	3.13	3.15	3.16	3.17	3.22	3.30	3.39	3.60	3.56	3.50	3.46	3.42	3.40	3.38
145	3.18	3.15	3.17	3.19	3.22	3.24	3.26	3.27	3.27	3.32	3.39	3.48	3.67	3.61	3.56	3.52	3.48	3.47	3.44
150	3.29	3.27	3.28	3.30	3.33	3.35	3.37	3.38	3.35	3.43	3.50	3.57	3.72	3.67	3.61	3.59	3.54	3.53	3.50
155	3.41	3.39	3.41	3.42	3.44	3.46	3.47	3.47	3.46	3.53	3.60	3.66	3.78	3.73	3.67	3.64	3.61	3.59	3.59
160	3.54	3.52	3.53	3.55	3.59	3.57	3.58	3.57	3.56	3.61	3.69	3.75	3.84	3.79	3.76	3.70	3.67	3.66	3.65
165	3.67	3.65	3.65	3.65	3.67	3.68	3.67	3.69	3.66	3.71	3.76	3.82	3.88	3.88	3.82	3.77	3.74	3.73	3.70
170	3.77	3.75	3.74	3.74	3.75	3.75	3.75	3.75	3.75	3.77	3.82	3.86	3.92	3.87	3.85	3.83	3.81	3.79	3.77
175	3.87	3.84	3.82	3.82	3.82	3.81	3.81	3.81	3.80	3.84	3.87	3.90	3.99	3.96	3.93	3.91	3.89	3.85	3.81
180	3.95	3.92	3.91	3.90	3.87	3.87	3.84	3.85	3.84	3.86	3.87	3.91	3.95	3.92	3.91	3.89	3.88	3.86	3.85

C Range: 0 - 360DEG  
 C Interval: 15.0DEG  
 Test Speed: HIGH  
 Temperature:25.3DEG  
 Operators:  
 Test Date:2022-04-13

γ Range: 0 - 180DEG  
 γ Interval: 1.0DEG  
 Test System:EVERFINE GO-2000B\_V1 SYSTEM V2.0.291  
 Humidity:65.0%  
 Test Distance:7.500m [K=1.0000]  
 Remarks:

LUMINOUS DISTRIBUTION INTENSITY DATA

Test:U:120.0V I:0.1430A P:15.89W PF:0.9258 Lamp Flux:1364x1 lm		
NAME: ASD-MPR-7D15CC-WH/BK 4000k	TYPE:LED	WEIGHT:
SPEC.:	DIM.:	SERIAL No.:
MFR.: ASD Lighting corp	SUR.:	PROTECTION ANGLE:

Table--2

UNIT: cd

C(DEG) γ (DEG)	285	300	315	330	345														
0	319	318	318	318	318														
5	319	318	320	322	323														
10	315	315	319	323	325														
15	310	309	315	321	325														
20	301	301	308	315	321														
25	290	289	298	307	314														
30	276	275	286	297	304														
35	260	259	272	283	292														
40	242	241	254	268	277														
45	222	219	235	250	260														
50	200	197	214	230	241														
55	176	174	191	206	219														
60	152	149	167	183	197														
65	126	123	142	158	172														
70	98.6	96.4	115	132	147														
75	71.7	69.9	87.8	106	120														
80	46.3	44.6	61.3	78.9	92.2														
85	23.9	22.5	36.8	52.5	65.1														
90	6.64	5.66	16.2	29.0	39.8														
95	3.04	3.03	3.04	9.49	18.0														
100	3.06	3.06	3.05	3.03	3.17														
105	3.08	3.08	3.07	3.06	3.05														
110	3.12	3.12	3.10	3.09	3.08														
115	3.15	3.15	3.14	3.12	3.12														
120	3.19	3.18	3.17	3.17	3.17														
125	3.22	3.22	3.20	3.20	3.21														
130	3.26	3.25	3.24	3.24	3.25														
135	3.31	3.30	3.27	3.28	3.29														
140	3.37	3.35	3.33	3.32	3.34														
145	3.43	3.41	3.39	3.37	3.39														
150	3.49	3.47	3.45	3.44	3.45														
155	3.57	3.55	3.52	3.52	3.53														
160	3.63	3.62	3.61	3.61	3.62														
165	3.69	3.69	3.67	3.68	3.70														
170	3.76	3.76	3.75	3.75	3.79														
175	3.81	3.81	3.81	3.82	3.89														
180	3.84	3.85	3.86	3.88	3.91														

C Range: 0 - 360DEG  
 C Interval: 15.0DEG  
 Test Speed: HIGH  
 Temperature:25.3DEG  
 Operators:  
 Test Date:2022-04-13

γ Range: 0 - 180DEG  
 γ Interval: 1.0DEG  
 Test System:EVERFINE GO-2000B\_V1 SYSTEM V2.0.291  
 Humidity:65.0%  
 Test Distance:7.500m [K=1.0000]  
 Remarks: