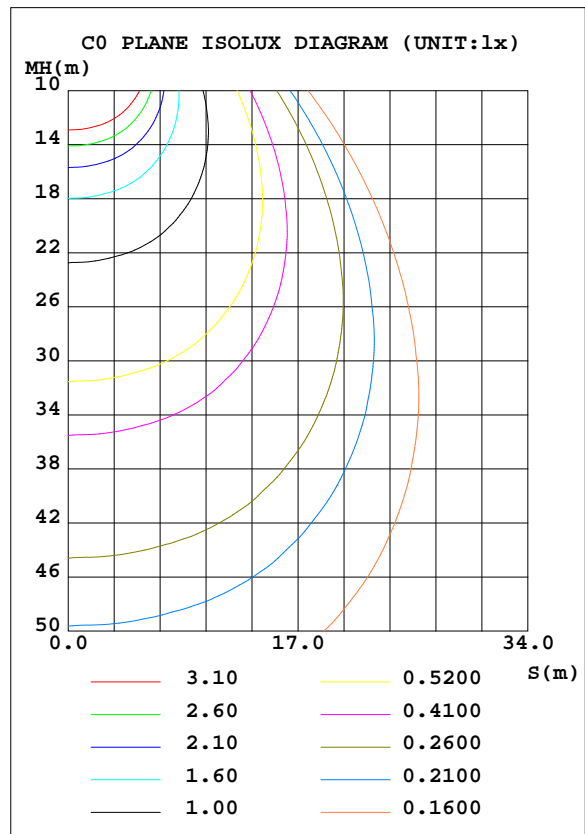
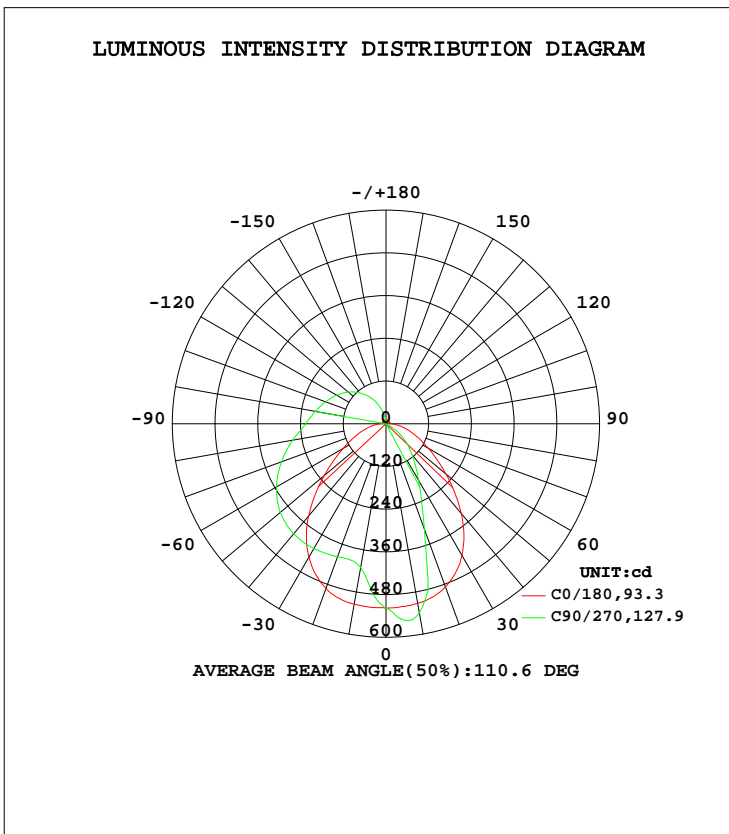


LUMINAIRE PHOTOMETRIC TEST REPORT

| | | |
|--|-----------|---------------------|
| Test:U:120.1V I:0.3108A P:36.55W PF:0.9796 Lamp Flux:2494x1 lm | | |
| NAME: LED luminaires | TYPE:N/A | WEIGHT:N/A |
| SPEC.:ASD-LVF24M-6D35CC-BK 3000K | DIM.: N/A | SERIAL No.:N/A |
| MFR.: ASD Lighting corp | SUR.:N/A | Shielding Angle:N/A |

| DATA OF LAMP | | PHOTOMETRIC DATA Eff: 68,24 lm/W | | | |
|---------------------------------|------|----------------------------------|---------|--------------------|-----------|
| MODEL ASD-LVF24M-6D35CC-BK 3000 | | I _{max} (cd) | 556.2 | S/MH(C0/180) | 1.22 |
| NOMINAL POWER(W) | | LOR(%) | 100.0 | S/MH(C90/270) | 0.74 |
| RATED VOLTAGE(V) | 120 | TOTAL FLUX(lm) | 2494 | η UP, DN(C0-180) | 21.0,55.4 |
| NOMINAL FLUX(lm) | 2494 | CIE CLASS | SEMI-D. | η UP, DN(C180-360) | 0.6,23.0 |
| LAMPS INSIDE | 1 | η up(%) | 21.6 | CIBSE SHR NOM | 1.00 |
| TEST VOLTAGE(V) | 120 | η down(%) | 78.4 | CIBSE SHR MAX | 1.15 |



C Range: 0 - 360DEG
 C Interval: 22.5DEG
 Test Speed: HIGH
 Temperature:25.1DEG
 Operators:Carl
 Test Date:2022-11-30

Carl Deng

γ Range: 0 - 180DEG
 γ Interval: 1.0DEG
 Test System:EVERFINE GO-R5000_V2 SYSTEM V2.0.351
 Humidity:42%
 Test Distance:2.532m [K=1.0000]
 Remarks:

Reviewed by : Henry He

ZONAL FLUX DIAGRAM

ZONAL FLUX DIAGRAM:

| γ | C0 | C45 | C90 | C135 | C180 | C225 | C270 | C315 | γ | Φ zone | Φ total | %lum,lamp |
|----------|-----------------------|-------|-------|-------|-------|--------|--------|--------|----------|-------------|--------------|-----------|
| 10 | 514.9 | 441.0 | 410.9 | 439.4 | 512.4 | 554.9 | 539.1 | 554.6 | 0- 10 | 48.51 | 48.51 | 2.75,2.75 |
| 20 | 492.1 | 398.9 | 397.6 | 399.3 | 488.2 | 476.7 | 315.6 | 475.9 | 10- 20 | 131.0 | 179.5 | 10.2,10.2 |
| 30 | 432.9 | 396.2 | 404.9 | 396.3 | 427.5 | 277.0 | 183.9 | 278.4 | 20- 30 | 179.3 | 358.8 | 20.3,20.3 |
| 40 | 338.4 | 388.7 | 403.5 | 389.3 | 329.4 | 170.0 | 114.4 | 172.0 | 30- 40 | 204.0 | 562.8 | 31.9,31.9 |
| 50 | 226.8 | 373.1 | 387.3 | 374.0 | 220.4 | 102.8 | 65.22 | 104.4 | 40- 50 | 206.0 | 768.9 | 43.5,43.5 |
| 60 | 139.4 | 347.2 | 355.3 | 348.1 | 137.1 | 51.36 | 16.16 | 53.44 | 50- 60 | 191.7 | 960.6 | 54.4,54.4 |
| 70 | 82.69 | 311.4 | 312.7 | 312.1 | 81.87 | 2.842 | 0.3594 | 4.244 | 60- 70 | 166.4 | 1127 | 63.8,63.8 |
| 80 | 43.57 | 269.1 | 265.8 | 269.8 | 42.90 | 0.3519 | 0.3922 | 0.3942 | 70- 80 | 140.5 | 1267 | 71.8,71.8 |
| 90 | 16.13 | 228.7 | 225.6 | 229.2 | 16.02 | 0.3918 | 0.4543 | 0.4512 | 80- 90 | 116.7 | 1384 | 78.4,78.4 |
| 100 | 10.63 | 201.9 | 201.5 | 202.3 | 12.31 | 0.4318 | 0.5042 | 0.4986 | 90-100 | 99.46 | 1484 | 84,84 |
| 110 | 9.867 | 176.2 | 180.9 | 176.5 | 11.10 | 0.3594 | 0.4190 | 0.4071 | 100-110 | 84.72 | 1568 | 88.8,88.8 |
| 120 | 9.036 | 150.5 | 160.9 | 151.0 | 10.30 | 0.3018 | 0.3380 | 0.3354 | 110-120 | 69.10 | 1637 | 92.7,92.7 |
| 130 | 11.18 | 123.8 | 138.8 | 124.4 | 12.27 | 0.3004 | 0.3332 | 0.3359 | 120-130 | 53.11 | 1691 | 95.7,95.7 |
| 140 | 12.24 | 95.56 | 113.1 | 96.06 | 13.15 | 0.3022 | 0.3234 | 0.3490 | 130-140 | 37.34 | 1728 | 97.9,97.9 |
| 150 | 13.43 | 65.99 | 83.45 | 66.42 | 13.11 | 0.3567 | 0.3560 | 0.4182 | 140-150 | 23.00 | 1751 | 99.2,99.2 |
| 160 | 7.919 | 36.58 | 50.38 | 36.18 | 7.898 | 1.593 | 0.4634 | 0.5478 | 150-160 | 11.29 | 1762 | 99.8,99.8 |
| 170 | 2.028 | 10.62 | 17.89 | 7.290 | 1.443 | 0.7164 | 0.6305 | 0.9823 | 160-170 | 3.355 | 1766 | 100,100 |
| 180 | 1.969 | 1.832 | 1.009 | 1.898 | 1.989 | 1.998 | 1.985 | 1.938 | 170-180 | 0.2891 | 1766 | 100,100 |
| DEG | LUMINOUS INTENSITY:cd | | | | | | | | | UNIT:lm | | |

Conical surface Flux(90deg): 666.72 lm

%lum = 37.8%

%lamp = 37.8%

Conical surface Flux(120deg): 960.65 lm

%lum = 54.4%

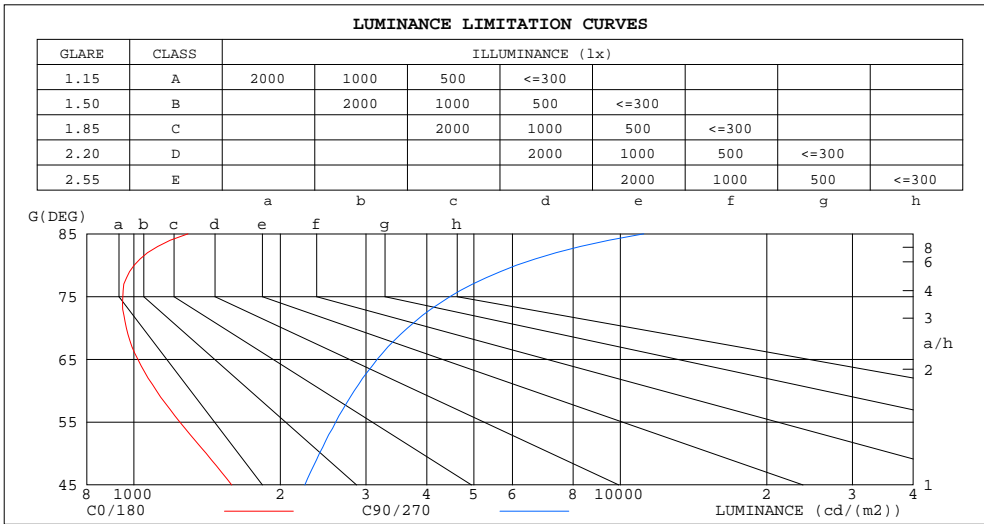
%lamp = 54.4%

C Range: 0 - 360DEG
 C Interval: 22.5DEG
 Test Speed: HIGH
 Temperature:25.1DEG
 Operators:Carl
 Test Date:2022-11-30

γ Range: 0 - 180DEG
 γ Interval: 1.0DEG
 Test System:EVERFINE GO-R5000_V2 SYSTEM V2.0.351
 Humidity:42%
 Test Distance:2.532m [K=1.0000]
 Remarks:

LUMINANCE LIMITATION CURVES

| | | |
|--|-----------|---------------------|
| Test:U:120.1V I:0.3108A P:36.55W PF:0.9796 Lamp Flux:2494x1 lm | | |
| NAME: LED luminaires | TYPE:N/A | WEIGHT:N/A |
| SPEC.:ASD-LVF24M-6D35CC-BK 3000K | DIM.: N/A | SERIAL No.:N/A |
| MFR.: ASD Lighting corp | SUR.:N/A | Shielding Angle:N/A |



| LUMINANCE cd/(m2) | | |
|-------------------|--------|---------|
| G(DEG) | C0/180 | C90/270 |
| 85 | 1292 | 11168 |
| 80 | 1001 | 6116 |
| 75 | 949 | 4466 |
| 70 | 965 | 3653 |
| 65 | 1019 | 3164 |
| 60 | 1113 | 2839 |
| 55 | 1243 | 2599 |
| 50 | 1408 | 2407 |
| 45 | 1588 | 2245 |

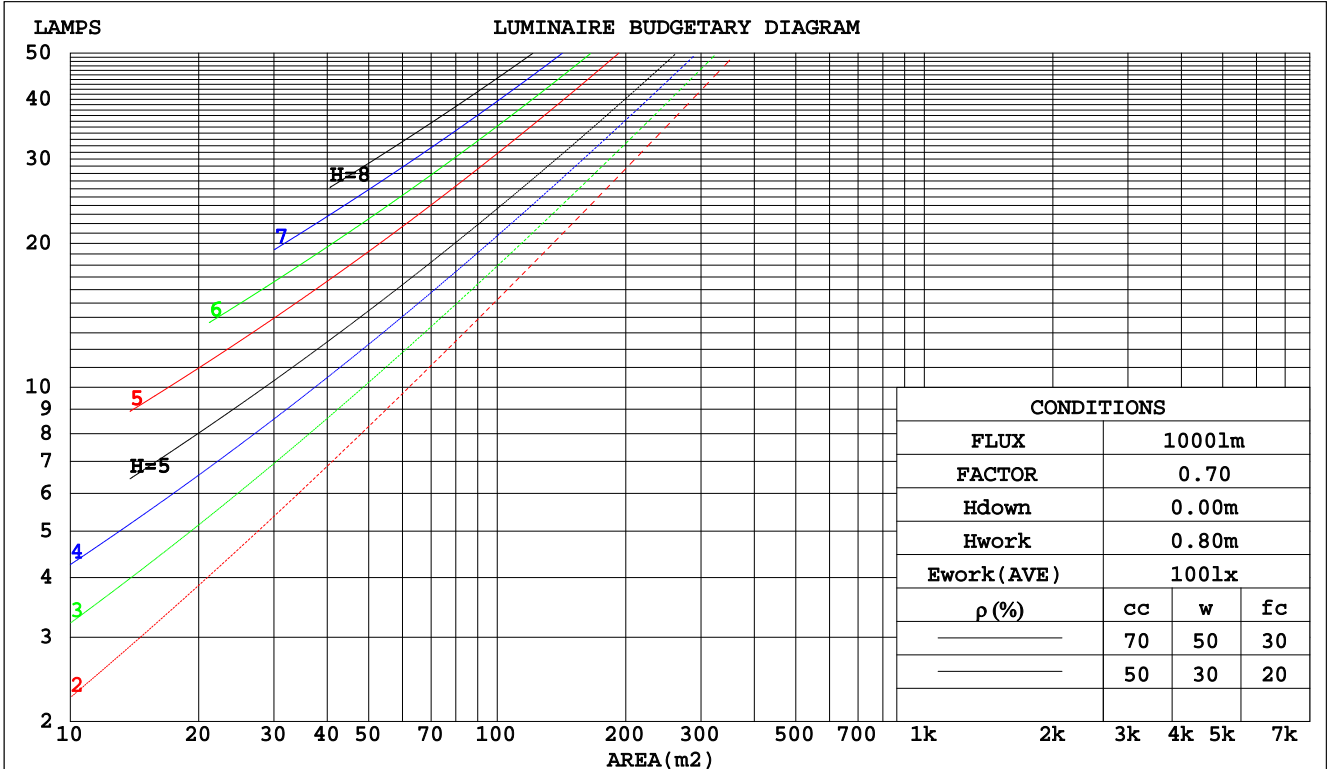
C Range: 0 - 360DEG
 C Interval: 22.5DEG
 Test Speed: HIGH
 Temperature:25.1DEG
 Operators:Carl
 Test Date:2022-11-30

γ Range: 0 - 180DEG
 γ Interval: 1.0DEG
 Test System:EVERFINE GO-R5000_V2 SYSTEM V2.0.351
 Humidity:42%
 Test Distance:2.532m [K=1.0000]
 Remarks:

CU AND LUMINAIRE BUDGETARY ESTIMATE DIAGRAM

| | | |
|--|-----------|---------------------|
| Test:U:120.1V I:0.3108A P:36.55W PF:0.9796 Lamp Flux:2494x1 lm | | |
| NAME: LED luminaires | TYPE:N/A | WEIGHT:N/A |
| SPEC.:ASD-LVF24M-6D35CC-BK 3000K | DIM.: N/A | SERIAL No.:N/A |
| MFR.: ASD Lighting corp | SUR.:N/A | Shielding Angle:N/A |

| pcc | 80% | | | 70% | | | 50% | | | 30% | | | 10% | | | 0 |
|------|--|------|------|------|------|------|-----|-----|-----|-----|-----|-----|-----|-----|-----|-----|
| | 50% | 30% | 10% | 50% | 30% | 10% | 50% | 30% | 10% | 50% | 30% | 10% | 50% | 30% | 10% | 0 |
| pw | | | | | | | | | | | | | | | | 0 |
| pfc | 20% | | | 20% | | | 20% | | | 20% | | | 20% | | | 0 |
| RCR | RCR:Room Cavity Ratio Coefficients of Utilization(CU) | | | | | | | | | | | | | | | |
| 0.0 | 1.14 | 1.14 | 1.14 | 1.09 | 1.09 | 1.09 | .99 | .99 | .99 | .90 | .90 | .90 | .82 | .82 | .82 | .78 |
| 1.0 | .96 | .91 | .86 | .92 | .87 | .83 | .83 | .80 | .76 | .76 | .73 | .70 | .69 | .67 | .64 | .61 |
| 2.0 | .83 | .76 | .69 | .79 | .72 | .67 | .72 | .67 | .62 | .66 | .61 | .57 | .59 | .56 | .53 | .50 |
| 3.0 | .73 | .64 | .57 | .69 | .62 | .55 | .63 | .57 | .52 | .58 | .52 | .48 | .52 | .48 | .45 | .41 |
| 4.0 | .64 | .55 | .48 | .61 | .53 | .47 | .56 | .49 | .44 | .51 | .46 | .41 | .47 | .42 | .38 | .35 |
| 5.0 | .57 | .48 | .41 | .55 | .47 | .40 | .50 | .43 | .38 | .46 | .40 | .36 | .42 | .37 | .33 | .31 |
| 6.0 | .52 | .43 | .36 | .49 | .41 | .35 | .45 | .38 | .33 | .42 | .36 | .31 | .38 | .33 | .29 | .27 |
| 7.0 | .47 | .38 | .32 | .45 | .37 | .31 | .41 | .34 | .29 | .38 | .32 | .28 | .35 | .30 | .26 | .24 |
| 8.0 | .43 | .34 | .28 | .41 | .33 | .28 | .38 | .31 | .26 | .35 | .29 | .25 | .32 | .27 | .23 | .21 |
| 9.0 | .39 | .31 | .26 | .38 | .30 | .25 | .35 | .28 | .24 | .32 | .27 | .22 | .30 | .25 | .21 | .19 |
| 10.0 | .36 | .28 | .23 | .35 | .28 | .23 | .32 | .26 | .22 | .30 | .24 | .20 | .28 | .23 | .19 | .18 |



C Range: 0 - 360DEG
 C Interval: 22.5DEG
 Test Speed: HIGH
 Temperature:25.1DEG
 Operators:Carl
 Test Date:2022-11-30

γ Range: 0 - 180DEG
 γ Interval: 1.0DEG
 Test System:EVERFINE GO-R5000_V2 SYSTEM V2.0.351
 Humidity:42%
 Test Distance:2.532m [K=1.0000]
 Remarks:

WEC AND CCEC

| | | |
|--|-----------|---------------------|
| Test:U:120.1V I:0.3108A P:36.55W PF:0.9796 Lamp Flux:2494x1 lm | | |
| NAME: LED luminaires | TYPE:N/A | WEIGHT:N/A |
| SPEC.:ASD-LVF24M-6D35CC-BK 3000K | DIM.: N/A | SERIAL No.:N/A |
| MFR.: ASD Lighting corp | SUR.:N/A | Shielding Angle:N/A |

| ρcc | 80% | | | 70% | | | 50% | | | 30% | | | 10% | | | 0 |
|------|-----------------------|------|------|------|------|------|---------------------------------|------|------|------|------|------|------|------|------|---|
| ρw | 50% | 30% | 10% | 50% | 30% | 10% | 50% | 30% | 10% | 50% | 30% | 10% | 50% | 30% | 10% | 0 |
| ρfc | 20% | | | 20% | | | 20% | | | 20% | | | 20% | | | 0 |
| RCR | RCR:Room Cavity Ratio | | | | | | Wall Exitance Coefficients(WEC) | | | | | | | | | |
| 0.0 | | | | | | | | | | | | | | | | |
| 1.0 | .361 | .205 | .065 | .347 | .198 | .063 | .322 | .184 | .059 | .298 | .172 | .055 | .276 | .160 | .052 | |
| 2.0 | .314 | .172 | .053 | .302 | .166 | .051 | .278 | .155 | .048 | .257 | .144 | .045 | .237 | .134 | .042 | |
| 3.0 | .280 | .149 | .045 | .269 | .144 | .043 | .248 | .134 | .041 | .228 | .125 | .038 | .210 | .116 | .036 | |
| 4.0 | .253 | .132 | .039 | .243 | .127 | .038 | .224 | .119 | .035 | .206 | .111 | .033 | .190 | .103 | .031 | |
| 5.0 | .231 | .118 | .034 | .222 | .114 | .033 | .204 | .106 | .031 | .188 | .099 | .030 | .173 | .093 | .028 | |
| 6.0 | .212 | .106 | .030 | .204 | .103 | .030 | .188 | .096 | .028 | .173 | .090 | .026 | .159 | .084 | .025 | |
| 7.0 | .196 | .097 | .028 | .189 | .094 | .027 | .174 | .088 | .025 | .161 | .082 | .024 | .148 | .077 | .023 | |
| 8.0 | .183 | .089 | .025 | .176 | .086 | .024 | .162 | .081 | .023 | .150 | .076 | .022 | .138 | .071 | .021 | |
| 9.0 | .171 | .083 | .023 | .164 | .080 | .022 | .152 | .075 | .021 | .140 | .070 | .020 | .129 | .066 | .019 | |
| 10.0 | .160 | .077 | .021 | .154 | .074 | .021 | .142 | .070 | .020 | .132 | .065 | .019 | .121 | .061 | .018 | |

| ρcc | 80% | | | 70% | | | 50% | | | 30% | | | 10% | | | 0 |
|------|-----------------------|------|------|------|------|------|--|------|------|------|------|------|------|------|------|---|
| ρw | 50% | 30% | 10% | 50% | 30% | 10% | 50% | 30% | 10% | 50% | 30% | 10% | 50% | 30% | 10% | 0 |
| ρfc | 20% | | | 20% | | | 20% | | | 20% | | | 20% | | | 0 |
| RCR | RCR:Room Cavity Ratio | | | | | | Ceiling Cavity Exitance Coefficients(CCEC) | | | | | | | | | |
| 0.0 | .355 | .355 | .355 | .304 | .304 | .304 | .207 | .207 | .207 | .119 | .119 | .119 | .038 | .038 | .038 | |
| 1.0 | .350 | .322 | .296 | .299 | .276 | .255 | .205 | .190 | .176 | .118 | .110 | .103 | .038 | .035 | .033 | |
| 2.0 | .342 | .299 | .262 | .293 | .257 | .227 | .201 | .178 | .158 | .116 | .104 | .093 | .037 | .034 | .030 | |
| 3.0 | .334 | .282 | .241 | .287 | .244 | .209 | .197 | .169 | .147 | .114 | .099 | .086 | .037 | .032 | .028 | |
| 4.0 | .327 | .270 | .226 | .280 | .233 | .197 | .193 | .163 | .139 | .111 | .095 | .082 | .036 | .031 | .027 | |
| 5.0 | .319 | .260 | .216 | .274 | .225 | .188 | .189 | .157 | .133 | .109 | .092 | .079 | .035 | .030 | .026 | |
| 6.0 | .312 | .252 | .209 | .268 | .218 | .182 | .185 | .153 | .129 | .107 | .090 | .077 | .035 | .029 | .025 | |
| 7.0 | .305 | .245 | .204 | .262 | .213 | .178 | .181 | .149 | .126 | .105 | .088 | .075 | .034 | .029 | .025 | |
| 8.0 | .298 | .240 | .200 | .257 | .208 | .174 | .178 | .146 | .124 | .103 | .086 | .074 | .033 | .028 | .024 | |
| 9.0 | .292 | .235 | .197 | .252 | .204 | .171 | .174 | .143 | .122 | .102 | .085 | .073 | .033 | .028 | .024 | |
| 10.0 | .287 | .231 | .194 | .247 | .201 | .169 | .171 | .141 | .120 | .100 | .083 | .072 | .032 | .027 | .024 | |

C Range: 0 - 360DEG
 C Interval: 22.5DEG
 Test Speed: HIGH
 Temperature:25.1DEG
 Operators:Carl
 Test Date:2022-11-30

γ Range: 0 - 180DEG
 γ Interval: 1.0DEG
 Test System:EVERFINE GO-R5000_V2 SYSTEM V2.0.351
 Humidity:42%
 Test Distance:2.532m [K=1.0000]
 Remarks:

UGR(Unified Glare Rating) Table

| | | | | | | | | | | |
|--|------------------|------|------|------|-----------|----------------|------|---------------------|------|------|
| Test:U:120.1V I:0.3108A P:36.55W PF:0.9796 Lamp Flux:2494x1 lm | | | | | | | | | | |
| NAME: LED luminaires | | | | | TYPE:N/A | | | WEIGHT:N/A | | |
| SPEC.:ASD-LVF24M-6D35CC-BK 3000K | | | | | DIM.: N/A | | | SERIAL No.:N/A | | |
| MFR.: ASD Lighting corp | | | | | SUR.:N/A | | | Shielding Angle:N/A | | |
| ceiling/cavity | 0.7 | 0.7 | 0.5 | 0.5 | 0.3 | 0.7 | 0.7 | 0.5 | 0.5 | 0.3 |
| walls | 0.5 | 0.3 | 0.5 | 0.3 | 0.3 | 0.5 | 0.3 | 0.5 | 0.3 | 0.3 |
| working plane | 0.2 | 0.2 | 0.2 | 0.2 | 0.2 | 0.2 | 0.2 | 0.2 | 0.2 | 0.2 |
| Room dimensions | Viewed crosswise | | | | | Viewed endwise | | | | |
| x = 2H y = 2H | 14.4 | 15.7 | 15.0 | 16.3 | 16.9 | 16.6 | 17.9 | 17.2 | 18.4 | 19.1 |
| 3H | 16.1 | 17.3 | 16.7 | 17.9 | 18.5 | 19.3 | 20.5 | 19.9 | 21.1 | 21.7 |
| 4H | 16.8 | 17.9 | 17.4 | 18.5 | 19.2 | 20.8 | 21.9 | 21.4 | 22.5 | 23.2 |
| 6H | 17.4 | 18.4 | 18.0 | 19.0 | 19.8 | 22.4 | 23.4 | 23.0 | 24.0 | 24.7 |
| 8H | 17.6 | 18.6 | 18.3 | 19.3 | 20.0 | 23.2 | 24.3 | 23.9 | 24.9 | 25.6 |
| 12H | 17.8 | 18.8 | 18.5 | 19.4 | 20.2 | 24.3 | 25.2 | 24.9 | 25.9 | 26.6 |
| 4H 2H | 16.0 | 17.1 | 16.6 | 17.7 | 18.4 | 17.4 | 18.5 | 18.0 | 19.1 | 19.8 |
| 3H | 18.2 | 19.2 | 18.8 | 19.8 | 20.5 | 20.4 | 21.3 | 21.0 | 22.0 | 22.7 |
| 4H | 19.3 | 20.2 | 19.9 | 20.8 | 21.6 | 22.0 | 22.9 | 22.7 | 23.6 | 24.3 |
| 6H | 20.2 | 21.0 | 20.9 | 21.7 | 22.5 | 23.8 | 24.6 | 24.5 | 25.3 | 26.1 |
| 8H | 20.6 | 21.4 | 21.3 | 22.1 | 22.9 | 24.8 | 25.5 | 25.5 | 26.2 | 27.0 |
| 12H | 20.9 | 21.6 | 21.7 | 22.3 | 23.2 | 25.9 | 26.6 | 26.6 | 27.3 | 28.1 |
| 8H 4H | 20.6 | 21.3 | 21.3 | 22.0 | 22.8 | 22.6 | 23.3 | 23.3 | 24.0 | 24.8 |
| 6H | 22.1 | 22.7 | 22.8 | 23.5 | 24.3 | 24.7 | 25.3 | 25.4 | 26.0 | 26.9 |
| 8H | 22.9 | 23.4 | 23.6 | 24.2 | 25.0 | 25.9 | 26.4 | 26.6 | 27.2 | 28.1 |
| 12H | 23.5 | 24.0 | 24.3 | 24.8 | 25.7 | 27.2 | 27.7 | 28.0 | 28.5 | 29.4 |
| 12H 4H | 20.9 | 21.6 | 21.6 | 22.3 | 23.2 | 22.7 | 23.4 | 23.4 | 24.1 | 24.9 |
| 6H | 22.7 | 23.3 | 23.4 | 24.0 | 24.9 | 24.9 | 25.5 | 25.7 | 26.2 | 27.1 |
| 8H | 23.7 | 24.2 | 24.4 | 24.9 | 25.8 | 26.2 | 26.7 | 27.0 | 27.5 | 28.4 |
| Variations with the observer position at spacings: | | | | | | | | | | |
| S = 1.0H | + 0.1 / - 0.1 | | | | | + 0.1 / - 0.1 | | | | |
| 1.5H | + 0.2 / - 0.3 | | | | | + 0.2 / - 0.3 | | | | |
| 2.0H | + 0.3 / - 0.5 | | | | | + 0.3 / - 0.4 | | | | |

CIE Pub.117 Corrected 1766 lm Total Lamp Luminous Flux.(8log(F/F0) = 2.0)

C Range: 0 - 360DEG
 C Interval: 22.5DEG
 Test Speed: HIGH
 Temperature:25.1DEG
 Operators:Carl
 Test Date:2022-11-30

γ Range: 0 - 180DEG
 γ Interval: 1.0DEG
 Test System:EVERFINE GO-R5000_V2 SYSTEM V2.0.351
 Humidity:42%
 Test Distance:2.532m [K=1.0000]
 Remarks:

UTILIZATION FACTORS TABLE

| | | |
|--|-----------|---------------------|
| Test:U:120.1V I:0.3108A P:36.55W PF:0.9796 Lamp Flux:2494x1 lm | | |
| NAME: LED luminaires | TYPE:N/A | WEIGHT:N/A |
| SPEC.:ASD-LVF24M-6D35CC-BK 3000K | DIM.: N/A | SERIAL No.:N/A |
| MFR.: ASD Lighting corp | SUR.:N/A | Shielding Angle:N/A |

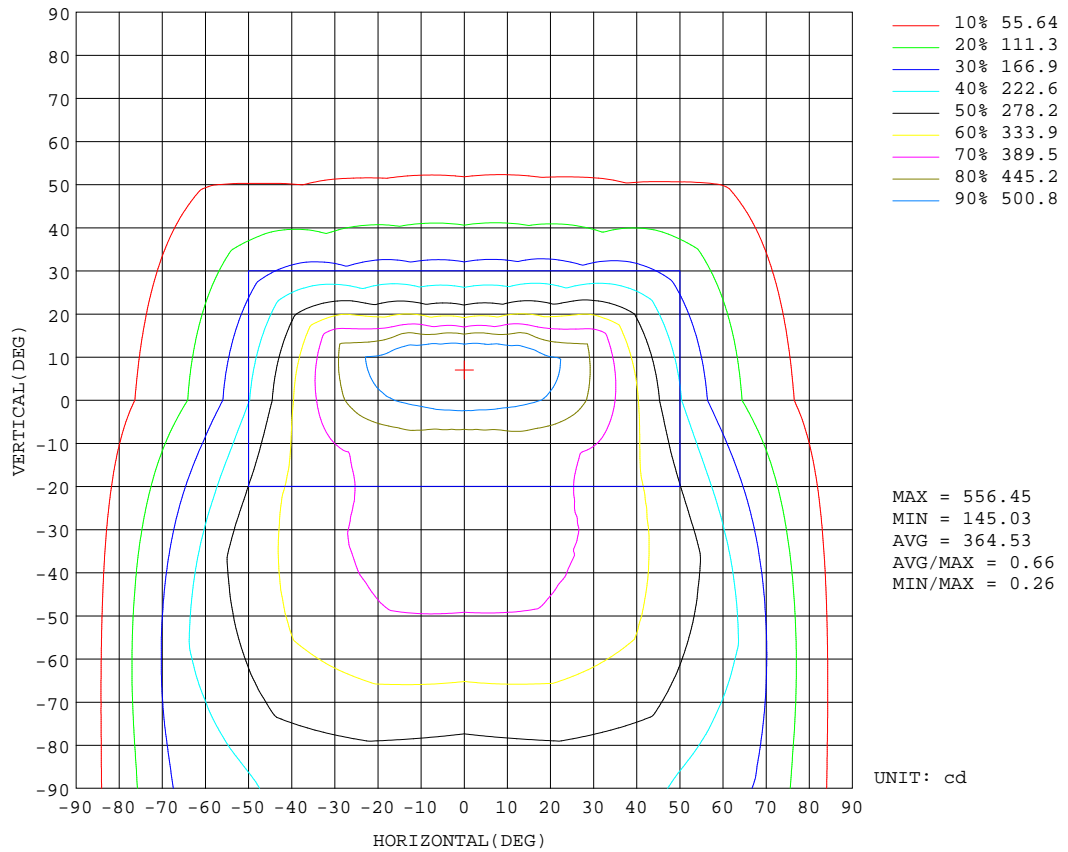
| REFLECTANCE | | | | | | | | | | |
|----------------------------------|---|-----|-----------|-----|-----|-----|---------------|-----|-----|--------|
| Ceiling | 0.8 | 0.8 | 0.8 | 0.7 | 0.7 | 0.7 | 0.5 | 0.5 | 0.5 | 0 |
| Walls | 0.7 | 0.5 | 0.3 | 0.7 | 0.5 | 0.3 | 0.7 | 0.5 | 0.3 | 0 |
| Working plane | 0.2 | 0.2 | 0.2 | 0.2 | 0.2 | 0.2 | 0.2 | 0.2 | 0.2 | 0 |
| ROOM INDEX | UTILIZATION FACTORS(PERCENT) $k(RI) \times RCR = 5$ | | | | | | | | | |
| k = 0.60 | 49 | 38 | 31 | 48 | 37 | 30 | 46 | 36 | 30 | 23 |
| 0.80 | 59 | 46 | 38 | 57 | 45 | 38 | 54 | 44 | 37 | 29 |
| 1.00 | 66 | 54 | 46 | 64 | 53 | 45 | 60 | 53 | 44 | 35 |
| 1.25 | 73 | 61 | 53 | 70 | 59 | 52 | 66 | 56 | 50 | 40 |
| 1.50 | 78 | 66 | 58 | 75 | 64 | 57 | 70 | 61 | 54 | 44 |
| 2.00 | 85 | 74 | 66 | 81 | 72 | 65 | 75 | 67 | 61 | 49 |
| 2.50 | 89 | 79 | 72 | 85 | 77 | 70 | 79 | 72 | 66 | 53 |
| 3.00 | 93 | 84 | 77 | 89 | 81 | 74 | 81 | 75 | 70 | 56 |
| 4.00 | 97 | 89 | 83 | 93 | 86 | 80 | 85 | 80 | 75 | 60 |
| 5.00 | 100 | 93 | 88 | 95 | 90 | 85 | 87 | 83 | 79 | 63 |
| ROOM INDEX | UF(total) | | | | | | | | | Direct |
| According to DIN EN 13032-2 2004 | | | Suspended | | | | SHRNOM = 1.25 | | | |

C Range: 0 - 360DEG
 C Interval: 22.5DEG
 Test Speed: HIGH
 Temperature:25.1DEG
 Operators:Carl
 Test Date:2022-11-30

γ Range: 0 - 180DEG
 γ Interval: 1.0DEG
 Test System:EVERFINE GO-R5000_V2 SYSTEM V2.0.351
 Humidity:42%
 Test Distance:2.532m [K=1.0000]
 Remarks:

ISOCANDELA DIAGRAM

| | | |
|--|-----------|---------------------|
| Test:U:120.1V I:0.3108A P:36.55W PF:0.9796 Lamp Flux:2494x1 lm | | |
| NAME: LED luminaires | TYPE:N/A | WEIGHT:N/A |
| SPEC.:ASD-LVF24M-6D35CC-BK 3000K | DIM.: N/A | SERIAL No.:N/A |
| MFR.: ASD Lighting corp | SUR.:N/A | Shielding Angle:N/A |

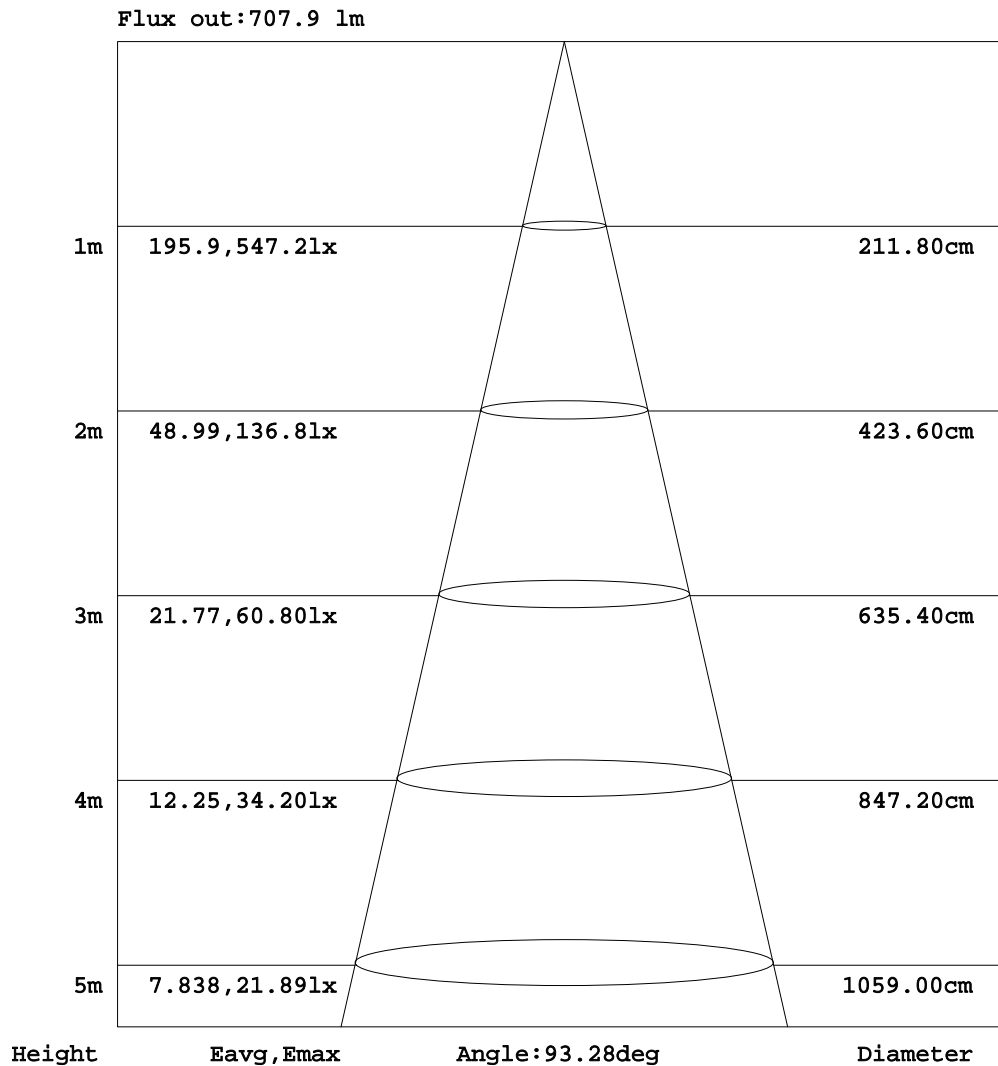


C Range: 0 - 360DEG
 C Interval: 22.5DEG
 Test Speed: HIGH
 Temperature:25.1DEG
 Operators:Carl
 Test Date:2022-11-30

γ Range: 0 - 180DEG
 γ Interval: 1.0DEG
 Test System:EVERFINE GO-R5000_V2 SYSTEM V2.0.351
 Humidity:42%
 Test Distance:2.532m [K=1.0000]
 Remarks:

AAI Figure

| | | |
|--|-----------|---------------------|
| Test:U:120.1V I:0.3108A P:36.55W PF:0.9796 Lamp Flux:2494x1 lm | | |
| NAME: LED luminaires | TYPE:N/A | WEIGHT:N/A |
| SPEC.:ASD-LVF24M-6D35CC-BK 3000K | DIM.: N/A | SERIAL No.:N/A |
| MFR.: ASD Lighting corp | SUR.:N/A | Shielding Angle:N/A |



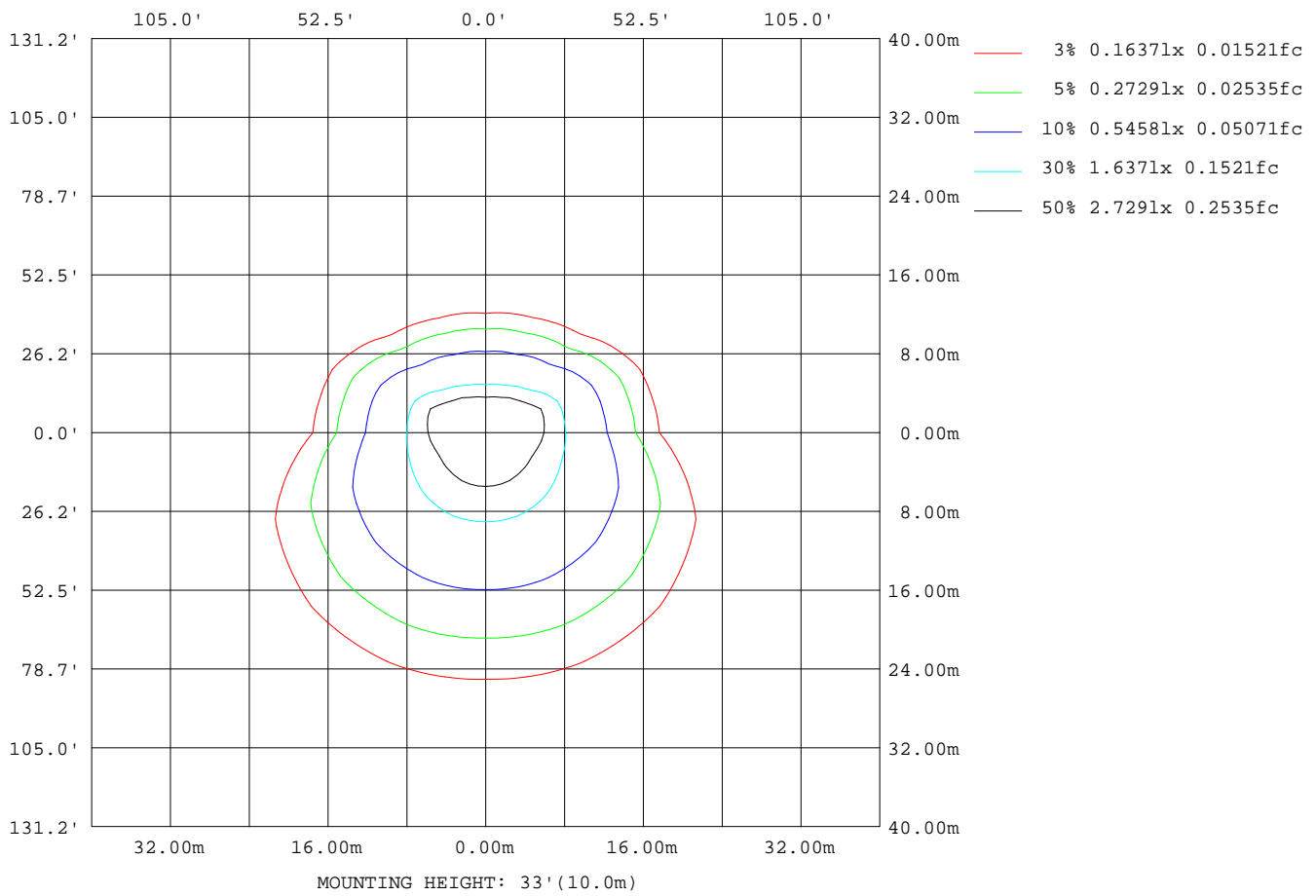
Note:The Curves indicate the illuminated area and the average illumination when the luminaire is at different distance.

C Range: 0 - 360DEG
 C Interval: 22.5DEG
 Test Speed: HIGH
 Temperature:25.1DEG
 Operators:Carl
 Test Date:2022-11-30

γ Range: 0 - 180DEG
 γ Interval: 1.0DEG
 Test System:EVERFINE GO-R5000_V2 SYSTEM V2.0.351
 Humidity:42%
 Test Distance:2.532m [K=1.0000]
 Remarks:

ISOLUX DIAGRAM

| | | |
|--|-----------|---------------------|
| Test:U:120.1V I:0.3108A P:36.55W PF:0.9796 Lamp Flux:2494x1 lm | | |
| NAME: LED luminaires | TYPE:N/A | WEIGHT:N/A |
| SPEC.:ASD-LVF24M-6D35CC-BK 3000K | DIM.: N/A | SERIAL No.:N/A |
| MFR.: ASD Lighting corp | SUR.:N/A | Shielding Angle:N/A |



C Range: 0 - 360DEG
 C Interval: 22.5DEG
 Test Speed: HIGH
 Temperature:25.1DEG
 Operators:Carl
 Test Date:2022-11-30

γ Range: 0 - 180DEG
 γ Interval: 1.0DEG
 Test System:EVERFINE GO-R5000_V2 SYSTEM V2.0.351
 Humidity:42%
 Test Distance:2.532m [K=1.0000]
 Remarks:

LED Avg.L Report

| | | |
|--|-----------|---------------------|
| Test:U:120.1V I:0.3108A P:36.55W PF:0.9796 Lamp Flux:2494x1 lm | | |
| NAME: LED luminaires | TYPE:N/A | WEIGHT:N/A |
| SPEC.:ASD-LVF24M-6D35CC-BK 3000K | DIM.: N/A | SERIAL No.:N/A |
| MFR.: ASD Lighting corp | SUR.:N/A | Shielding Angle:N/A |

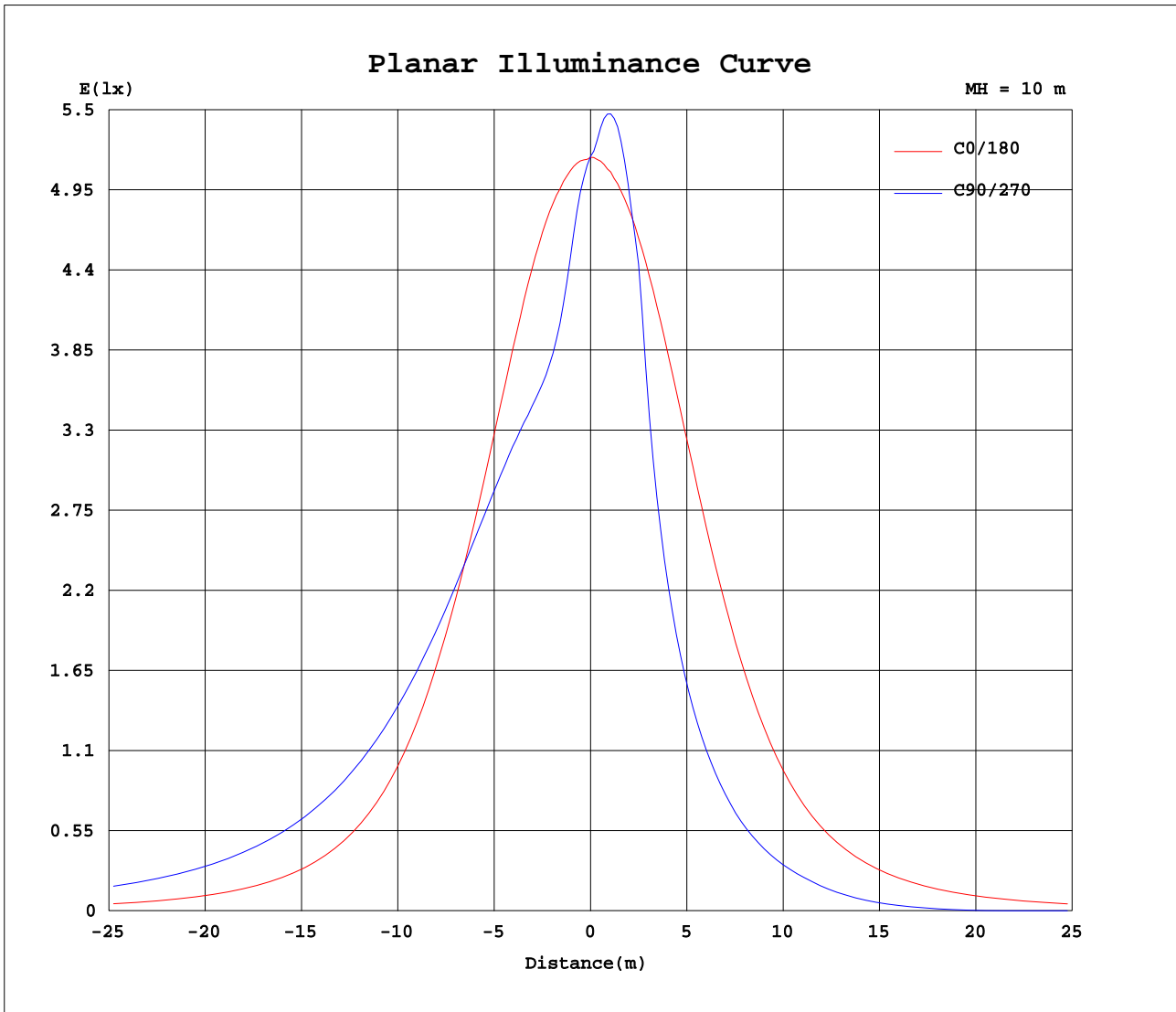
| AvgL | cd/m2 |
|----------------|-------|
| L_0~180(65)av | 1014 |
| L_0~180(75)av | 944 |
| L_0~180(85)av | 1267 |
| L_90~270(65)av | 1587 |
| L_90~270(75)av | 2235 |
| L_90~270(85)av | 5591 |
| L_45(65)av | 1681 |
| L_45(75)av | 2250 |
| L_45(85)av | 5681 |

Standard: GB/T 29293-2012

C Range: 0 - 360DEG
C Interval: 22.5DEG
Test Speed: HIGH
Temperature:25.1DEG
Operators:Carl
Test Date:2022-11-30

γ Range: 0 - 180DEG
 γ Interval: 1.0DEG
Test System:EVERFINE GO-R5000_V2 SYSTEM V2.0.351
Humidity:42%
Test Distance:2.532m [K=1.0000]
Remarks:

Planar Illuminance Curve



C Range: 0 - 360DEG
 C Interval: 22.5DEG
 Test Speed: HIGH
 Temperature: 25.1DEG
 Operators: Carl
 Test Date: 2022-11-30

γ Range: 0 - 180DEG
 γ Interval: 1.0DEG
 Test System: EVERFINE GO-R5000_V2 SYSTEM V2.0.351
 Humidity: 42%
 Test Distance: 2.532m [K=1.0000]
 Remarks:

LUMINOUS DISTRIBUTION INTENSITY DATA

| | | |
|--|-----------|---------------------|
| Test:U:120.1V I:0.3108A P:36.55W PF:0.9796 Lamp Flux:2494x1 lm | | |
| NAME: LED luminaires | TYPE:N/A | WEIGHT:N/A |
| SPEC.:ASD-LVF24M-6D35CC-BK 3000K | DIM.: N/A | SERIAL No.:N/A |
| MFR.:ASD Lighting corp | SUR.:N/A | Shielding Angle:N/A |

Table--1

UNIT: cd

| C(DEG) γ (DEG) | 0 | 22.5 | 45 | 67.5 | 90 | 112.5 | 135 | 157.5 | 180 | 202.5 | 225 | 247.5 | 270 | 292.5 | 315 | 337.5 | | | |
|-------------------|------|------|------|------|------|-------|------|-------|------|-------|------|-------|------|-------|------|-------|--|--|--|
| 0 | 518 | 518 | 518 | 518 | 518 | 518 | 518 | 518 | 518 | 518 | 518 | 518 | 518 | 518 | 518 | 518 | | | |
| 5 | 517 | 505 | 489 | 474 | 470 | 475 | 488 | 504 | 516 | 527 | 543 | 550 | 553 | 552 | 543 | 528 | | | |
| 10 | 515 | 484 | 441 | 417 | 411 | 417 | 439 | 482 | 512 | 541 | 555 | 546 | 539 | 546 | 555 | 543 | | | |
| 15 | 508 | 458 | 410 | 397 | 395 | 397 | 409 | 454 | 505 | 545 | 529 | 488 | 457 | 488 | 528 | 545 | | | |
| 20 | 492 | 431 | 399 | 397 | 398 | 398 | 399 | 426 | 488 | 531 | 477 | 348 | 316 | 348 | 476 | 529 | | | |
| 25 | 467 | 407 | 397 | 401 | 402 | 402 | 397 | 404 | 462 | 501 | 358 | 260 | 236 | 262 | 360 | 496 | | | |
| 30 | 433 | 388 | 396 | 404 | 405 | 405 | 396 | 387 | 427 | 459 | 277 | 202 | 184 | 203 | 278 | 455 | | | |
| 35 | 390 | 371 | 393 | 405 | 406 | 406 | 394 | 370 | 382 | 403 | 216 | 160 | 145 | 161 | 218 | 405 | | | |
| 40 | 338 | 355 | 389 | 404 | 404 | 405 | 389 | 356 | 329 | 322 | 170 | 126 | 114 | 127 | 172 | 325 | | | |
| 45 | 281 | 339 | 382 | 399 | 397 | 400 | 383 | 339 | 273 | 257 | 133 | 98.7 | 89.4 | 99.5 | 135 | 260 | | | |
| 50 | 227 | 322 | 373 | 390 | 387 | 392 | 374 | 323 | 220 | 200 | 103 | 75.4 | 65.2 | 76.1 | 104 | 203 | | | |
| 55 | 179 | 305 | 362 | 378 | 373 | 379 | 363 | 306 | 175 | 155 | 77.6 | 48.3 | 38.8 | 49.4 | 79.0 | 157 | | | |
| 60 | 139 | 287 | 347 | 362 | 355 | 363 | 348 | 288 | 137 | 119 | 51.4 | 23.1 | 16.2 | 24.1 | 53.4 | 120 | | | |
| 65 | 108 | 267 | 330 | 343 | 335 | 344 | 331 | 268 | 107 | 89.4 | 24.2 | 3.37 | 1.18 | 4.05 | 26.2 | 90.3 | | | |
| 70 | 82.7 | 247 | 311 | 322 | 313 | 323 | 312 | 248 | 81.9 | 64.2 | 2.84 | 0.34 | 0.36 | 0.37 | 4.24 | 64.8 | | | |
| 75 | 61.5 | 226 | 291 | 300 | 289 | 300 | 292 | 228 | 60.9 | 35.4 | 0.34 | 0.36 | 0.37 | 0.38 | 0.38 | 36.6 | | | |
| 80 | 43.6 | 205 | 269 | 277 | 266 | 278 | 270 | 206 | 42.9 | 18.5 | 0.35 | 0.38 | 0.39 | 0.40 | 0.39 | 17.8 | | | |
| 85 | 28.2 | 183 | 247 | 255 | 244 | 255 | 248 | 185 | 27.1 | 16.9 | 0.38 | 0.42 | 0.43 | 0.44 | 0.43 | 16.3 | | | |
| 90 | 16.1 | 165 | 229 | 237 | 226 | 237 | 229 | 167 | 16.0 | 15.5 | 0.39 | 0.44 | 0.45 | 0.46 | 0.45 | 14.8 | | | |
| 95 | 13.7 | 154 | 215 | 224 | 213 | 223 | 215 | 155 | 13.7 | 14.5 | 0.42 | 0.47 | 0.49 | 0.49 | 0.49 | 13.9 | | | |
| 100 | 10.6 | 143 | 202 | 211 | 201 | 211 | 202 | 144 | 12.3 | 13.4 | 0.43 | 0.48 | 0.50 | 0.50 | 0.50 | 12.9 | | | |
| 105 | 10.1 | 132 | 189 | 199 | 191 | 199 | 189 | 133 | 11.6 | 12.2 | 0.40 | 0.44 | 0.46 | 0.46 | 0.45 | 11.7 | | | |
| 110 | 9.87 | 121 | 176 | 188 | 181 | 187 | 176 | 123 | 11.1 | 10.8 | 0.36 | 0.40 | 0.42 | 0.42 | 0.41 | 10.6 | | | |
| 115 | 9.37 | 111 | 163 | 176 | 171 | 176 | 164 | 113 | 10.4 | 8.96 | 0.33 | 0.36 | 0.38 | 0.38 | 0.37 | 8.89 | | | |
| 120 | 9.04 | 101 | 150 | 164 | 161 | 164 | 151 | 102 | 10.3 | 7.09 | 0.30 | 0.33 | 0.34 | 0.34 | 0.34 | 7.12 | | | |
| 125 | 10.0 | 90.6 | 137 | 152 | 150 | 152 | 138 | 92.0 | 11.4 | 5.35 | 0.30 | 0.33 | 0.34 | 0.34 | 0.33 | 5.46 | | | |
| 130 | 11.2 | 80.3 | 124 | 139 | 139 | 139 | 124 | 81.1 | 12.3 | 3.77 | 0.30 | 0.32 | 0.33 | 0.34 | 0.34 | 3.93 | | | |
| 135 | 11.9 | 70.0 | 110 | 125 | 126 | 126 | 111 | 70.2 | 12.9 | 2.35 | 0.30 | 0.32 | 0.33 | 0.34 | 0.34 | 2.56 | | | |
| 140 | 12.2 | 59.0 | 95.6 | 111 | 113 | 111 | 96.1 | 59.7 | 13.2 | 1.57 | 0.30 | 0.31 | 0.32 | 0.34 | 0.35 | 1.60 | | | |
| 145 | 12.5 | 48.5 | 80.9 | 95.8 | 98.8 | 96.1 | 81.4 | 49.1 | 13.7 | 1.99 | 0.32 | 0.32 | 0.33 | 0.35 | 0.38 | 1.18 | | | |
| 150 | 13.4 | 38.6 | 66.0 | 79.9 | 83.4 | 80.2 | 66.4 | 38.7 | 13.1 | 3.74 | 0.36 | 0.35 | 0.36 | 0.38 | 0.42 | 0.91 | | | |
| 155 | 10.9 | 28.7 | 51.0 | 64.6 | 67.2 | 63.5 | 47.1 | 29.8 | 10.5 | 5.76 | 0.79 | 0.40 | 0.41 | 0.43 | 0.49 | 1.14 | | | |
| 160 | 7.92 | 19.6 | 36.6 | 47.0 | 50.4 | 47.3 | 36.2 | 19.7 | 7.90 | 4.86 | 1.59 | 0.49 | 0.46 | 0.48 | 0.55 | 1.23 | | | |
| 165 | 3.46 | 10.9 | 22.9 | 31.0 | 33.9 | 31.4 | 21.3 | 9.09 | 4.02 | 3.71 | 1.73 | 0.62 | 0.55 | 0.54 | 0.68 | 1.46 | | | |
| 170 | 2.03 | 2.89 | 10.6 | 15.9 | 17.9 | 15.9 | 7.29 | 2.55 | 1.44 | 1.38 | 0.72 | 0.54 | 0.63 | 0.72 | 0.98 | 1.29 | | | |
| 175 | 1.98 | 2.10 | 2.31 | 4.26 | 4.50 | 2.14 | 2.26 | 1.96 | 1.72 | 1.73 | 1.56 | 1.39 | 0.84 | 1.34 | 1.55 | 1.52 | | | |
| 180 | 1.97 | 2.21 | 1.83 | 2.00 | 1.01 | 2.41 | 1.90 | 2.28 | 1.99 | 1.99 | 2.00 | 2.01 | 1.99 | 1.43 | 1.94 | 2.04 | | | |

C Range: 0 - 360DEG
 C Interval: 22.5DEG
 Test Speed: HIGH
 Temperature:25.1DEG
 Operators:Carl
 Test Date:2022-11-30

γ Range: 0 - 180DEG
 γ Interval: 1.0DEG
 Test System:EVERFINE GO-R5000_V2 SYSTEM V2.0.351
 Humidity:42%
 Test Distance:2.532m [K=1.0000]
 Remarks: