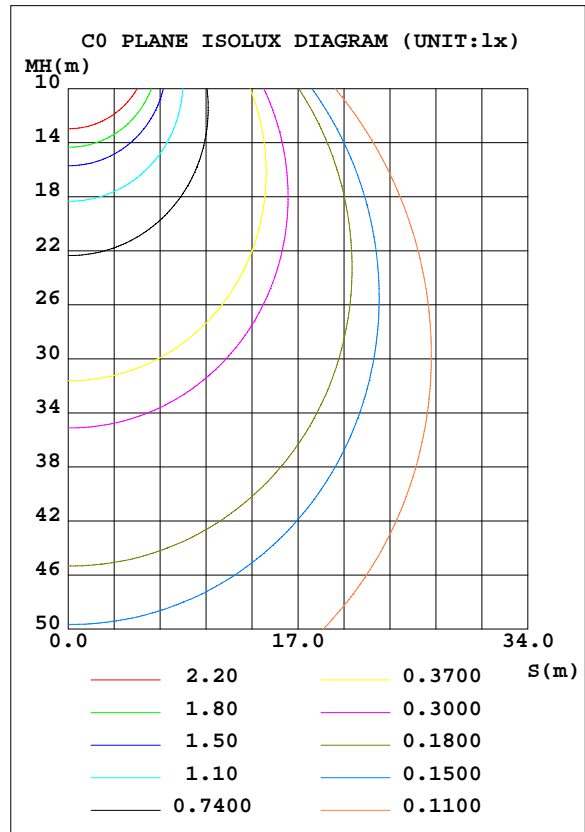
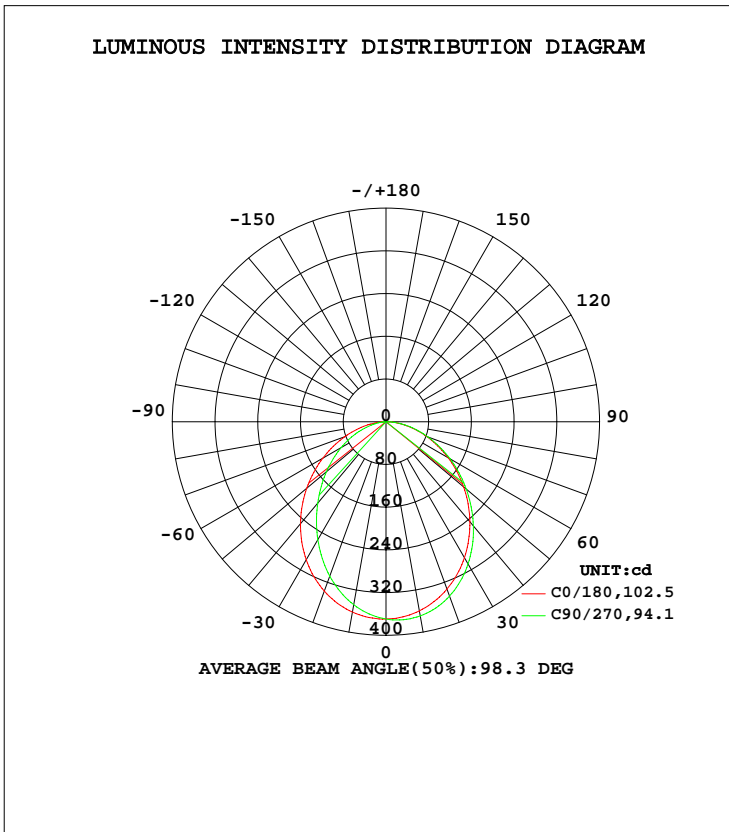


LUMINAIRE PHOTOMETRIC TEST REPORT

Test:U:120.1V I:0.1066A P:12.74W PF:0.9955 Lamp Flux:910.097x1 lm		
NAME: ASD-UCS-24D12CC-XX 2700K	TYPE:N/A	WEIGHT:N/A
SPEC.:N/A	DIM.: N/A	SERIAL No.:N/A
MFR.: ASD Lighting Corp	SUR.:N/A	Shielding Angle:N/A

DATA OF LAMP		PHOTOMETRIC DATA			
MODEL	ASD-UCS-24D12CC-XX	Imax(cd)	372.2	S/MH(C0/180)	1.19
NOMINAL POWER(W)	12	LOR(%)	100.0	S/MH(C90/270)	1.24
RATED VOLTAGE(V)	120	TOTAL FLUX(lm)	910.10	η UP, DN(C0-180)	0.1,46.0
NOMINAL FLUX(lm)	910.097	CIE CLASS	DIRECT	η UP, DN(C180-360)	0.0,53.9
LAMPS INSIDE	1	η up(%)	0.1	CIBSE SHR NOM	1.25
TEST VOLTAGE(V)	120	η down(%)	99.9	CIBSE SHR MAX	1.35



C Range: 0 - 360DEG  
 C Interval: 22.5DEG  
 Test Speed: HIGH  
 Temperature:25.3DEG  
 Operators:David  
 Test Date:2017-06-07

γ Range: 0 - 180DEG  
 γ Interval: 1.0DEG  
 Test System:EVERFINE GO-R5000\_V2 SYSTEM V2.0.351  
 Humidity:45%  
 Test Distance:2.447m [K=1.0000]  
 Remarks:

ZONAL FLUX DIAGRAM

ZONAL FLUX DIAGRAM:

γ	C0	C45	C90	C135	C180	C225	C270	C315	γ	Φ zone	Φ total	%lum, lamp
10	361.8	353.3	348.0	351.3	359.7	366.4	369.3	368.2	0- 10	34.80	34.80	3.82,3.82
20	337.7	319.4	307.8	315.8	333.7	344.0	347.6	347.5	10- 20	97.96	132.8	14.6,14.6
30	298.8	272.2	255.3	268.3	293.9	305.1	307.4	309.7	20- 30	143.4	276.2	30.3,30.3
40	249.2	218.3	198.9	214.5	244.4	254.4	254.5	259.1	30- 40	164.7	440.9	48.4,48.4
50	193.7	163.5	145.5	160.5	189.9	197.8	196.3	201.8	40- 50	161.2	602.1	66.2,66.2
60	136.8	111.5	97.02	109.4	134.3	140.7	138.4	143.6	50- 60	137.3	739.4	81.2,81.2
70	82.42	64.11	54.02	63.05	81.41	85.78	84.16	87.51	60- 70	99.26	838.7	92.2,92.2
80	34.46	23.30	18.15	23.05	35.30	38.34	37.26	38.95	70- 80	55.37	894.0	98.2,98.2
90	0.0713	0.0514	0.0486	0.0665	0.1159	1.655	2.033	1.575	80- 90	14.99	909.0	99.9,99.9
100	0.0769	0.0823	0.0821	0.0830	0.0414	0.0361	0.0312	0.0337	90-100	0.0964	909.1	99.9,99.9
110	0.0999	0.1065	0.1067	0.1065	0.0702	0.0605	0.0532	0.0569	100-110	0.0749	909.2	99.9,99.9
120	0.1204	0.1285	0.1292	0.1284	0.1121	0.0986	0.0863	0.0906	110-120	0.0952	909.3	99.9,99.9
130	0.1722	0.1833	0.1824	0.1816	0.1566	0.1424	0.1293	0.1310	120-130	0.1195	909.4	99.9,99.9
140	0.2710	0.2866	0.2877	0.2826	0.2008	0.1921	0.1819	0.1813	130-140	0.1498	909.6	99.9,99.9
150	0.4260	0.4460	0.4476	0.4374	0.2481	0.2444	0.2420	0.2378	140-150	0.1801	909.8	100,100
160	0.5281	0.5455	0.5476	0.5315	0.3112	0.3076	0.3117	0.3103	150-160	0.1782	909.9	100,100
170	0.5278	0.5368	0.5332	0.5234	0.3466	0.3441	0.3460	0.3454	160-170	0.1230	910.1	100,100
180	0.4498	0.4519	0.4647	0.4427	0.4497	0.4494	0.4526	0.4451	170-180	0.0422	910.1	100,100
DEG	LUMINOUS INTENSITY:cd Less than 25% Percent = 9.1 %									UNIT:lm		

Conical surface Flux(90deg): 523.35 lm

%lum = 57.5%  
 %lamp = 57.5%

Conical surface Flux(120deg): 739.41 lm

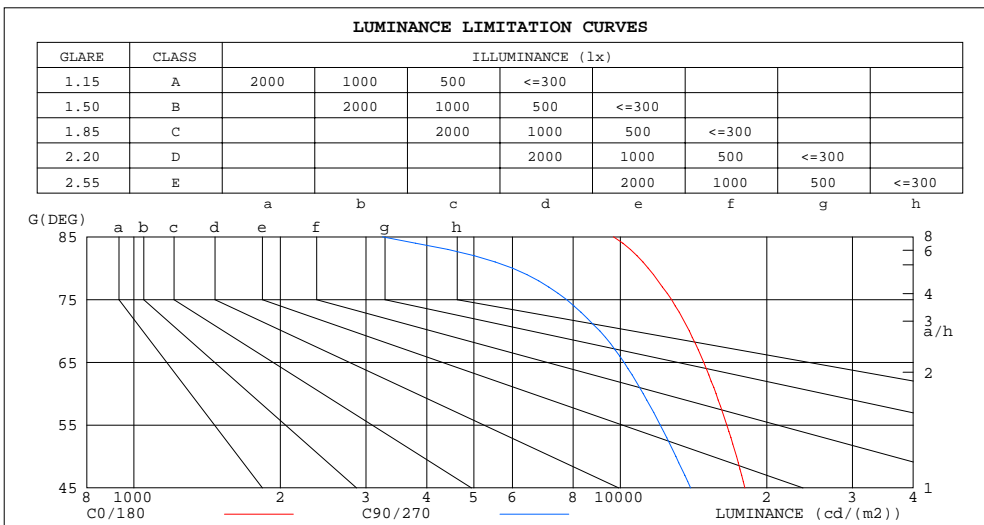
%lum = 81.2%  
 %lamp = 81.2%

C Range: 0 - 360DEG  
 C Interval: 22.5DEG  
 Test Speed: HIGH  
 Temperature:25.3DEG  
 Operators:David  
 Test Date:2017-06-07

γ Range: 0 - 180DEG  
 γ Interval: 1.0DEG  
 Test System:EVERFINE GO-R5000\_V2 SYSTEM V2.0.351  
 Humidity:45%  
 Test Distance:2.447m [K=1.0000]  
 Remarks:

LUMINANCE LIMITATION CURVES

Test:U:120.1V I:0.1066A P:12.74W PF:0.9955 Lamp Flux:910.097x1 lm		
NAME: ASD-UCS-24D12CC-XX 2700K	TYPE:N/A	WEIGHT:N/A
SPEC.:N/A	DIM.: N/A	SERIAL No.:N/A
MFR.: ASD Lighting Corp	SUR.:N/A	Shielding Angle:N/A



LUMINANCE cd/(m2)		
G( DEG)	C0/180	C90/270
85	9683	3243
80	11413	6006
75	12746	7751
70	13860	9074
65	14841	10176
60	15732	11148
55	16557	12080
50	17332	13005
45	18038	13942

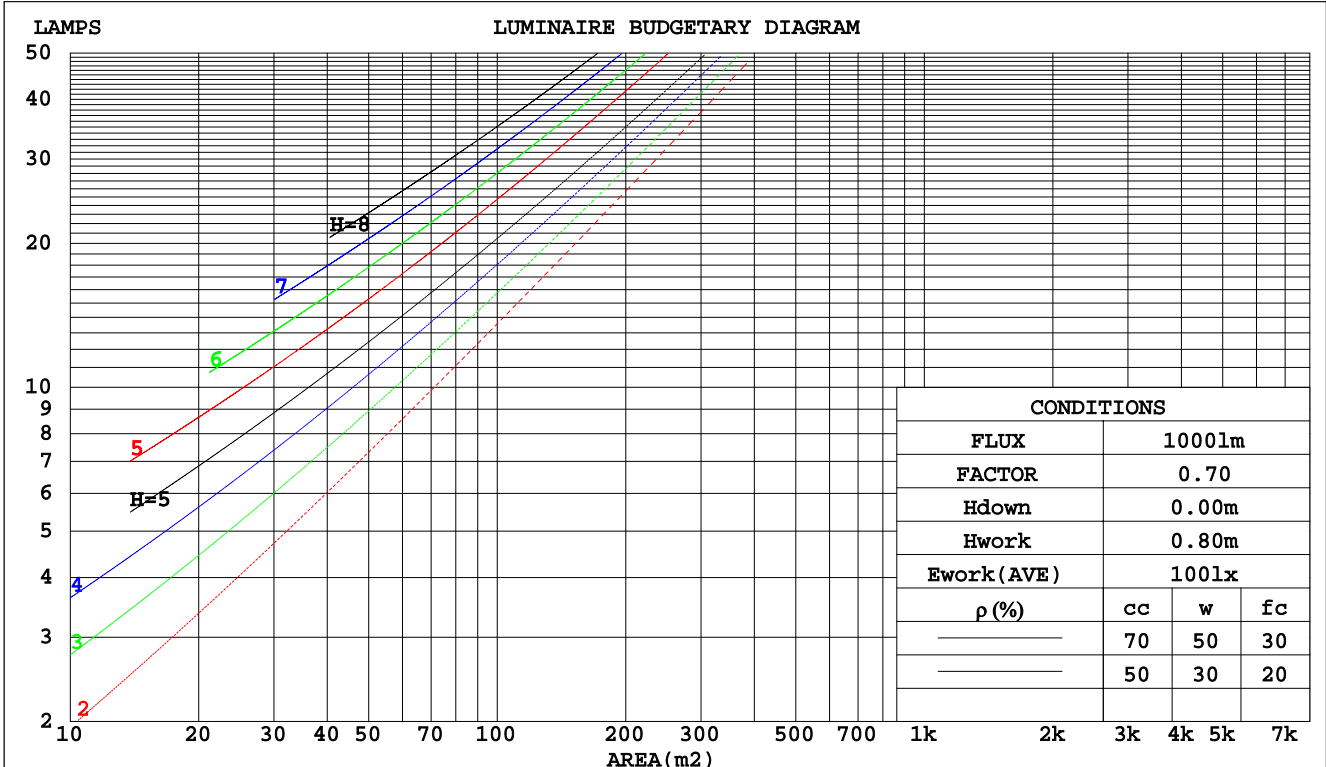
C Range: 0 - 360DEG  
 C Interval: 22.5DEG  
 Test Speed: HIGH  
 Temperature:25.3DEG  
 Operators:David  
 Test Date:2017-06-07

γ Range: 0 - 180DEG  
 γ Interval: 1.0DEG  
 Test System:EVERFINE GO-R5000\_V2 SYSTEM V2.0.351  
 Humidity:45%  
 Test Distance:2.447m [K=1.0000]  
 Remarks:

CU AND LUMINAIRE BUDGETARY ESTIMATE DIAGRAM

Test:U:120.1V I:0.1066A P:12.74W PF:0.9955 Lamp Flux:910.097x1 lm		
NAME: ASD-UCS-24D12CC-XX 2700K	TYPE:N/A	WEIGHT:N/A
SPEC.:N/A	DIM.: N/A	SERIAL No.:N/A
MFR.: ASD Lighting Corp	SUR.:N/A	Shielding Angle:N/A

pcc	80%			70%			50%			30%			10%			0
	50%	30%	10%	50%	30%	10%	50%	30%	10%	50%	30%	10%	50%	30%	10%	0
pw																0
pfc	20%			20%			20%			20%			20%			0
RCR	RCR:Room Cavity Ratio      Coefficients of Utilization(CU)															
0.0	1.19	1.19	1.19	1.16	1.16	1.16	1.11	1.11	1.11	1.06	1.06	1.06	1.02	1.02	1.02	.00
1.0	1.05	1.00	.97	1.02	.99	.95	.98	.95	.92	.94	.92	.89	.91	.88	.87	.85
2.0	.92	.85	.80	.90	.84	.79	.86	.81	.77	.83	.79	.75	.80	.76	.73	.71
3.0	.81	.73	.67	.79	.72	.66	.76	.70	.65	.74	.68	.64	.71	.67	.63	.61
4.0	.72	.63	.57	.71	.63	.57	.68	.61	.56	.66	.60	.55	.64	.59	.54	.52
5.0	.65	.56	.49	.63	.55	.49	.61	.54	.49	.59	.53	.48	.58	.52	.47	.45
6.0	.58	.50	.43	.57	.49	.43	.56	.48	.43	.54	.47	.42	.52	.47	.42	.40
7.0	.53	.44	.38	.52	.44	.38	.51	.43	.38	.49	.43	.38	.48	.42	.37	.36
8.0	.49	.40	.34	.48	.40	.34	.47	.39	.34	.45	.39	.34	.44	.38	.34	.32
9.0	.45	.37	.31	.44	.36	.31	.43	.36	.31	.42	.35	.31	.41	.35	.31	.29
10.0	.41	.34	.28	.41	.33	.28	.40	.33	.28	.39	.32	.28	.38	.32	.28	.26



C Range: 0 - 360DEG  
 C Interval: 22.5DEG  
 Test Speed: HIGH  
 Temperature: 25.3DEG  
 Operators: David  
 Test Date: 2017-06-07

γ Range: 0 - 180DEG  
 γ Interval: 1.0DEG  
 Test System: EVERFINE GO-R5000\_V2 SYSTEM V2.0.351  
 Humidity: 45%  
 Test Distance: 2.447m [K=1.0000]  
 Remarks:

WEC AND CCEC

Test:U:120.1V I:0.1066A P:12.74W PF:0.9955 Lamp Flux:910.097x1 lm		
NAME: ASD-UCS-24D12CC-XX 2700K	TYPE:N/A	WEIGHT:N/A
SPEC.:N/A	DIM.: N/A	SERIAL No.:N/A
MFR.: ASD Lighting Corp	SUR.:N/A	Shielding Angle:N/A

ρcc	80%			70%			50%			30%			10%			0
ρw	50%	30%	10%	50%	30%	10%	50%	30%	10%	50%	30%	10%	50%	30%	10%	0
ρfc	20%			20%			20%			20%			20%			0
RCR	RCR:Room Cavity Ratio						Wall Exitance Coefficients(WEC)									
0.0																
1.0	.296	.168	.053	.289	.165	.052	.276	.158	.051	.264	.152	.049	.252	.146	.047	
2.0	.280	.153	.047	.274	.151	.046	.262	.146	.045	.251	.141	.044	.241	.136	.043	
3.0	.260	.138	.041	.254	.136	.041	.244	.132	.040	.235	.129	.039	.226	.125	.039	
4.0	.241	.125	.037	.236	.123	.036	.227	.120	.036	.218	.117	.035	.210	.114	.035	
5.0	.223	.114	.033	.219	.112	.033	.211	.110	.032	.203	.107	.032	.196	.105	.032	
6.0	.207	.104	.030	.204	.103	.030	.196	.101	.029	.190	.099	.029	.183	.097	.029	
7.0	.194	.096	.027	.190	.095	.027	.184	.093	.027	.178	.091	.027	.172	.089	.026	
8.0	.181	.089	.025	.178	.088	.025	.172	.086	.025	.167	.085	.024	.162	.083	.024	
9.0	.170	.082	.023	.167	.082	.023	.162	.080	.023	.157	.079	.023	.153	.078	.022	
10.0	.160	.077	.021	.158	.076	.021	.153	.075	.021	.149	.074	.021	.144	.073	.021	

ρcc	80%			70%			50%			30%			10%			0
ρw	50%	30%	10%	50%	30%	10%	50%	30%	10%	50%	30%	10%	50%	30%	10%	0
ρfc	20%			20%			20%			20%			20%			0
RCR	RCR:Room Cavity Ratio						Ceiling Cavity Exitance Coefficients(CCEC)									
0.0	.191	.191	.191	.164	.164	.164	.112	.112	.112	.064	.064	.064	.021	.021	.021	
1.0	.180	.157	.136	.154	.135	.117	.105	.093	.081	.061	.054	.047	.019	.017	.015	
2.0	.172	.133	.100	.147	.114	.087	.101	.079	.061	.058	.046	.035	.019	.015	.012	
3.0	.163	.115	.077	.140	.099	.066	.096	.069	.047	.056	.040	.027	.018	.013	.009	
4.0	.156	.102	.060	.134	.088	.053	.092	.061	.037	.053	.036	.022	.017	.012	.007	
5.0	.148	.091	.049	.127	.079	.043	.088	.055	.030	.051	.032	.018	.016	.011	.006	
6.0	.141	.083	.041	.121	.072	.036	.084	.050	.025	.049	.030	.015	.016	.010	.005	
7.0	.134	.076	.035	.116	.066	.030	.080	.046	.022	.046	.027	.013	.015	.009	.004	
8.0	.128	.070	.030	.110	.061	.026	.076	.043	.019	.044	.025	.011	.014	.008	.004	
9.0	.122	.065	.027	.105	.056	.023	.073	.040	.016	.042	.023	.010	.014	.008	.003	
10.0	.116	.061	.024	.100	.053	.021	.070	.037	.015	.041	.022	.009	.013	.007	.003	

C Range: 0 - 360DEG  
 C Interval: 22.5DEG  
 Test Speed: HIGH  
 Temperature:25.3DEG  
 Operators:David  
 Test Date:2017-06-07

γ Range: 0 - 180DEG  
 γ Interval: 1.0DEG  
 Test System:EVERFINE GO-R5000\_V2 SYSTEM V2.0.351  
 Humidity:45%  
 Test Distance:2.447m [K=1.0000]  
 Remarks:

UGR(Unified Glare Rating) Table

Test:U:120.1V I:0.1066A P:12.74W PF:0.9955 Lamp Flux:910.097x1 lm		
NAME: ASD-UCS-24D12CC-XX 2700K	TYPE:N/A	WEIGHT:N/A
SPEC.:N/A	DIM.: N/A	SERIAL No.:N/A
MFR.: ASD Lighting Corp	SUR.:N/A	Shielding Angle:N/A

ceiling/cavity	0.7	0.7	0.5	0.5	0.3	0.7	0.7	0.5	0.5	0.3
walls	0.5	0.3	0.5	0.3	0.3	0.5	0.3	0.5	0.3	0.3
working plane	0.2	0.2	0.2	0.2	0.2	0.2	0.2	0.2	0.2	0.2
Room dimensions	Viewed crosswise					Viewed endwise				
x = 2H y = 2H	22.2	23.7	22.5	23.9	24.1	20.8	22.2	21.0	22.5	22.7
3H	23.6	25.0	23.9	25.2	25.4	21.9	23.3	22.2	23.5	23.7
4H	24.2	25.5	24.5	25.7	26.0	22.3	23.6	22.6	23.8	24.1
6H	24.6	25.8	24.9	26.1	26.4	22.5	23.7	22.8	24.0	24.3
8H	24.7	25.9	25.1	26.2	26.5	22.5	23.7	22.9	24.0	24.3
12H	24.8	25.9	25.2	26.2	26.5	22.5	23.6	22.9	23.9	24.2
4H 2H	22.5	23.8	22.9	24.1	24.3	21.4	22.7	21.7	23.0	23.2
3H	24.2	25.3	24.5	25.6	25.9	22.7	23.8	23.1	24.1	24.4
4H	24.9	25.9	25.2	26.2	26.5	23.2	24.2	23.6	24.5	24.9
6H	25.4	26.3	25.8	26.7	27.0	23.5	24.4	23.9	24.8	25.1
8H	25.6	26.4	26.0	26.8	27.2	23.6	24.4	24.0	24.8	25.2
12H	25.7	26.5	26.1	26.9	27.3	23.6	24.3	24.0	24.7	25.1
8H 4H	25.0	25.8	25.4	26.2	26.6	23.5	24.3	23.9	24.7	25.1
6H	25.6	26.3	26.1	26.7	27.2	23.9	24.6	24.3	25.0	25.4
8H	25.9	26.5	26.4	26.9	27.4	24.0	24.6	24.5	25.0	25.5
12H	26.1	26.6	26.6	27.1	27.5	24.0	24.6	24.5	25.0	25.5
12H 4H	25.0	25.7	25.4	26.1	26.5	23.5	24.3	23.9	24.7	25.1
6H	25.6	26.3	26.1	26.7	27.1	23.9	24.6	24.4	25.0	25.4
8H	25.9	26.5	26.4	26.9	27.4	24.1	24.6	24.5	25.1	25.5
Variations with the observer position at spacings:										
S = 1.0H	+ 0.2 / - 0.2					+ 0.3 / - 0.3				
1.5H	+ 0.2 / - 0.2					+ 0.2 / - 0.3				
2.0H	+ 0.4 / - 0.5					+ 0.3 / - 0.5				

CIE Pub.117 Corrected 910.1 lm Total Lamp Luminous Flux. (8log(F/F0) = -0.3)

C Range: 0 - 360DEG  
 C Interval: 22.5DEG  
 Test Speed: HIGH  
 Temperature:25.3DEG  
 Operators:David  
 Test Date:2017-06-07

γ Range: 0 - 180DEG  
 γ Interval: 1.0DEG  
 Test System:EVERFINE GO-R5000\_V2 SYSTEM V2.0.351  
 Humidity:45%  
 Test Distance:2.447m [K=1.0000]  
 Remarks:

**UTILIZATION FACTORS TABLE**

Test:U:120.1V I:0.1066A P:12.74W PF:0.9955 Lamp Flux:910.097x1 lm		
NAME: ASD-UCS-24D12CC-XX 2700K	TYPE:N/A	WEIGHT:N/A
SPEC.:N/A	DIM.: N/A	SERIAL No.:N/A
MFR.: ASD Lighting Corp	SUR.:N/A	Shielding Angle:N/A

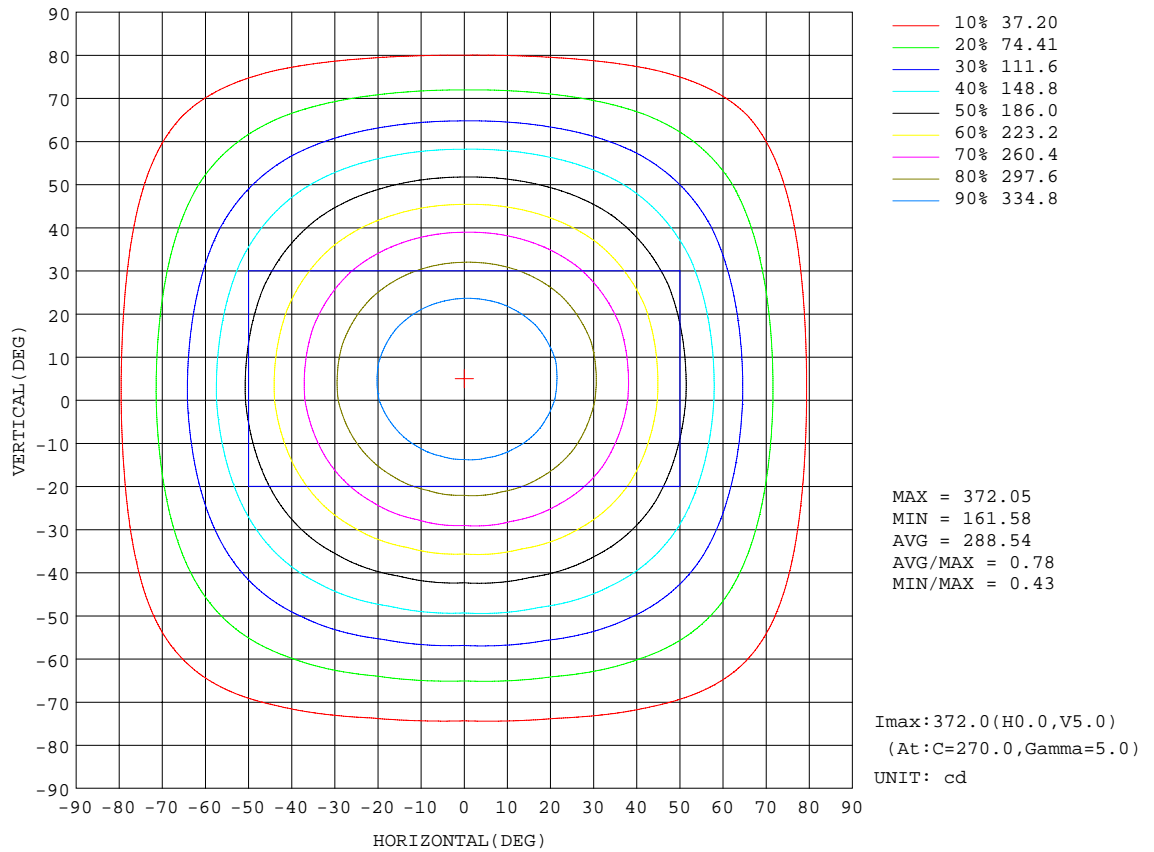
REFLECTANCE										
Ceiling	0.8	0.8	0.8	0.7	0.7	0.7	0.5	0.5	0.5	0
Walls	0.7	0.5	0.3	0.7	0.5	0.3	0.7	0.5	0.3	0
Working plane	0.2	0.2	0.2	0.2	0.2	0.2	0.2	0.2	0.2	0
ROOM INDEX	UTILIZATION FACTORS(PERCENT) $k(RI) \times RCR = 5$									
k = 0.60	60	49	42	59	48	42	58	48	42	35
0.80	70	59	51	69	58	51	67	57	51	44
1.00	78	67	60	77	67	60	75	68	59	53
1.25	85	75	68	83	74	68	81	73	67	60
1.50	90	80	74	88	79	73	85	78	72	65
2.00	96	88	82	94	87	81	91	85	80	72
2.50	100	93	87	98	91	86	94	88	84	76
3.00	103	97	91	101	95	90	97	92	88	80
4.00	107	101	97	105	100	96	100	96	93	84
5.00	109	105	101	107	103	99	102	99	96	87
ROOM INDEX	UF(total)									Direct
According to DIN EN 13032-2 2004			Suspended				SHRNOM = 1.25			

C Range: 0 - 360DEG  
 C Interval: 22.5DEG  
 Test Speed: HIGH  
 Temperature:25.3DEG  
 Operators:David  
 Test Date:2017-06-07

$\gamma$  Range: 0 - 180DEG  
 $\gamma$  Interval: 1.0DEG  
 Test System:EVERFINE GO-R5000\_V2 SYSTEM V2.0.351  
 Humidity:45%  
 Test Distance:2.447m [K=1.0000]  
 Remarks:

ISOCANDELA DIAGRAM

Test:U:120.1V I:0.1066A P:12.74W PF:0.9955 Lamp Flux:910.097x1 lm		
NAME: ASD-UCS-24D12CC-XX 2700K	TYPE:N/A	WEIGHT:N/A
SPEC.:N/A	DIM.: N/A	SERIAL No.:N/A
MFR.: ASD Lighting Corp	SUR.:N/A	Shielding Angle:N/A



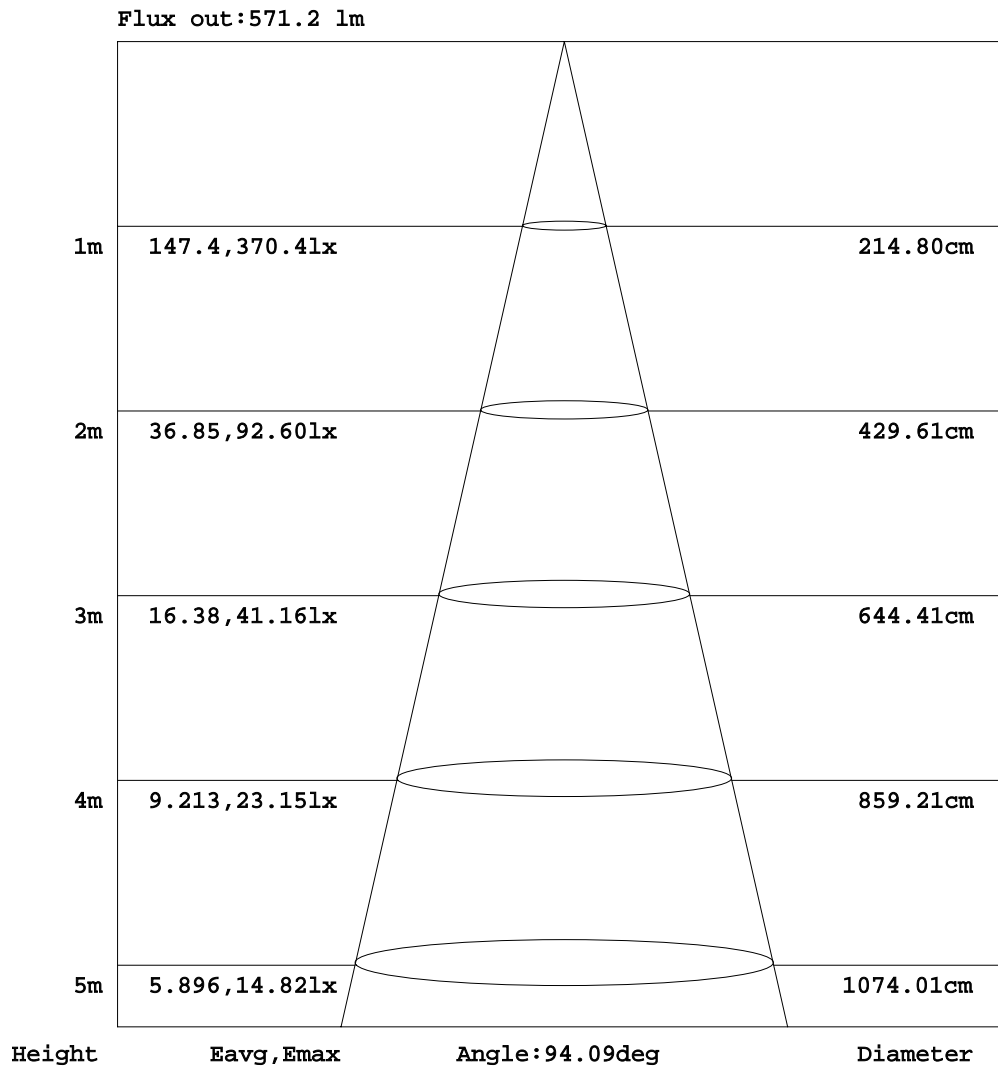
C Range: 0 - 360DEG  
 C Interval: 22.5DEG  
 Test Speed: HIGH  
 Temperature: 25.3DEG  
 Operators: David  
 Test Date: 2017-06-07

γ Range: 0 - 180DEG  
 γ Interval: 1.0DEG  
 Test System: EVERFINE GO-R5000\_V2 SYSTEM V2.0.351  
 Humidity: 45%  
 Test Distance: 2.447m [K=1.0000]  
 Remarks:



AAI Figure

Test:U:120.1V I:0.1066A P:12.74W PF:0.9955 Lamp Flux:910.097x1 lm		
NAME: ASD-UCS-24D12CC-XX 2700K	TYPE:N/A	WEIGHT:N/A
SPEC.:N/A	DIM.: N/A	SERIAL No.:N/A
MFR.: ASD Lighting Corp	SUR.:N/A	Shielding Angle:N/A



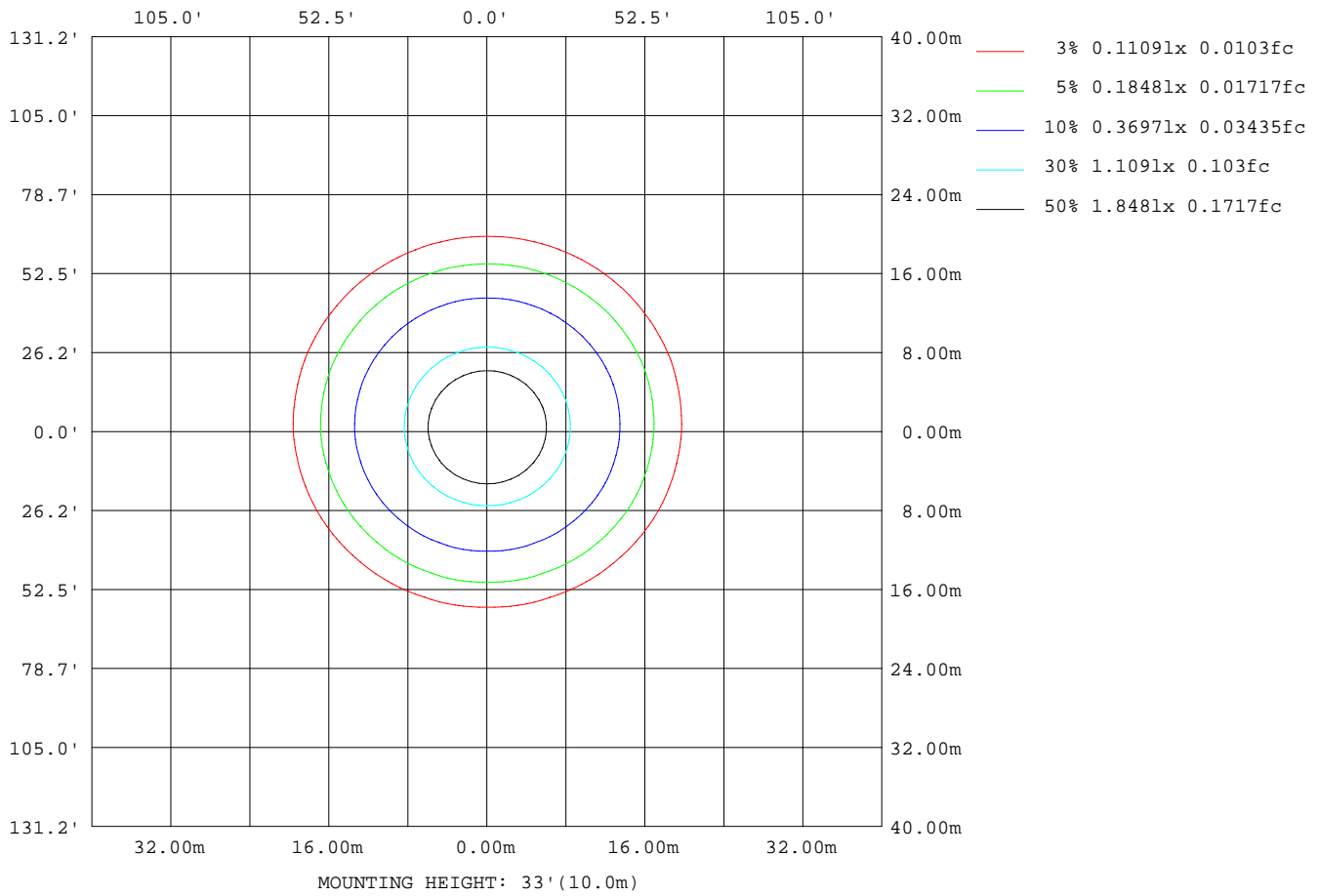
Note:The Curves indicate the illuminated area and the average illumination when the luminaire is at different distance.

C Range: 0 - 360DEG  
 C Interval: 22.5DEG  
 Test Speed: HIGH  
 Temperature:25.3DEG  
 Operators:David  
 Test Date:2017-06-07

γ Range: 0 - 180DEG  
 γ Interval: 1.0DEG  
 Test System:EVERFINE GO-R5000\_V2 SYSTEM V2.0.351  
 Humidity:45%  
 Test Distance:2.447m [K=1.0000]  
 Remarks:

ISOLUX DIAGRAM

Test:U:120.1V I:0.1066A P:12.74W PF:0.9955 Lamp Flux:910.097x1 lm		
NAME: ASD-UCS-24D12CC-XX 2700K	TYPE:N/A	WEIGHT:N/A
SPEC.:N/A	DIM.: N/A	SERIAL No.:N/A
MFR.: ASD Lighting Corp	SUR.:N/A	Shielding Angle:N/A



C Range: 0 - 360DEG  
 C Interval: 22.5DEG  
 Test Speed: HIGH  
 Temperature:25.3DEG  
 Operators:David  
 Test Date:2017-06-07

γ Range: 0 - 180DEG  
 γ Interval: 1.0DEG  
 Test System:EVERFINE GO-R5000\_V2 SYSTEM V2.0.351  
 Humidity:45%  
 Test Distance:2.447m [K=1.0000]  
 Remarks:

LED Avg.L Report

Test:U:120.1V I:0.1066A P:12.74W PF:0.9955 Lamp Flux:910.097x1 lm		
NAME: ASD-UCS-24D12CC-XX 2700K	TYPE:N/A	WEIGHT:N/A
SPEC.:N/A	DIM.: N/A	SERIAL No.:N/A
MFR.: ASD Lighting Corp	SUR.:N/A	Shielding Angle:N/A

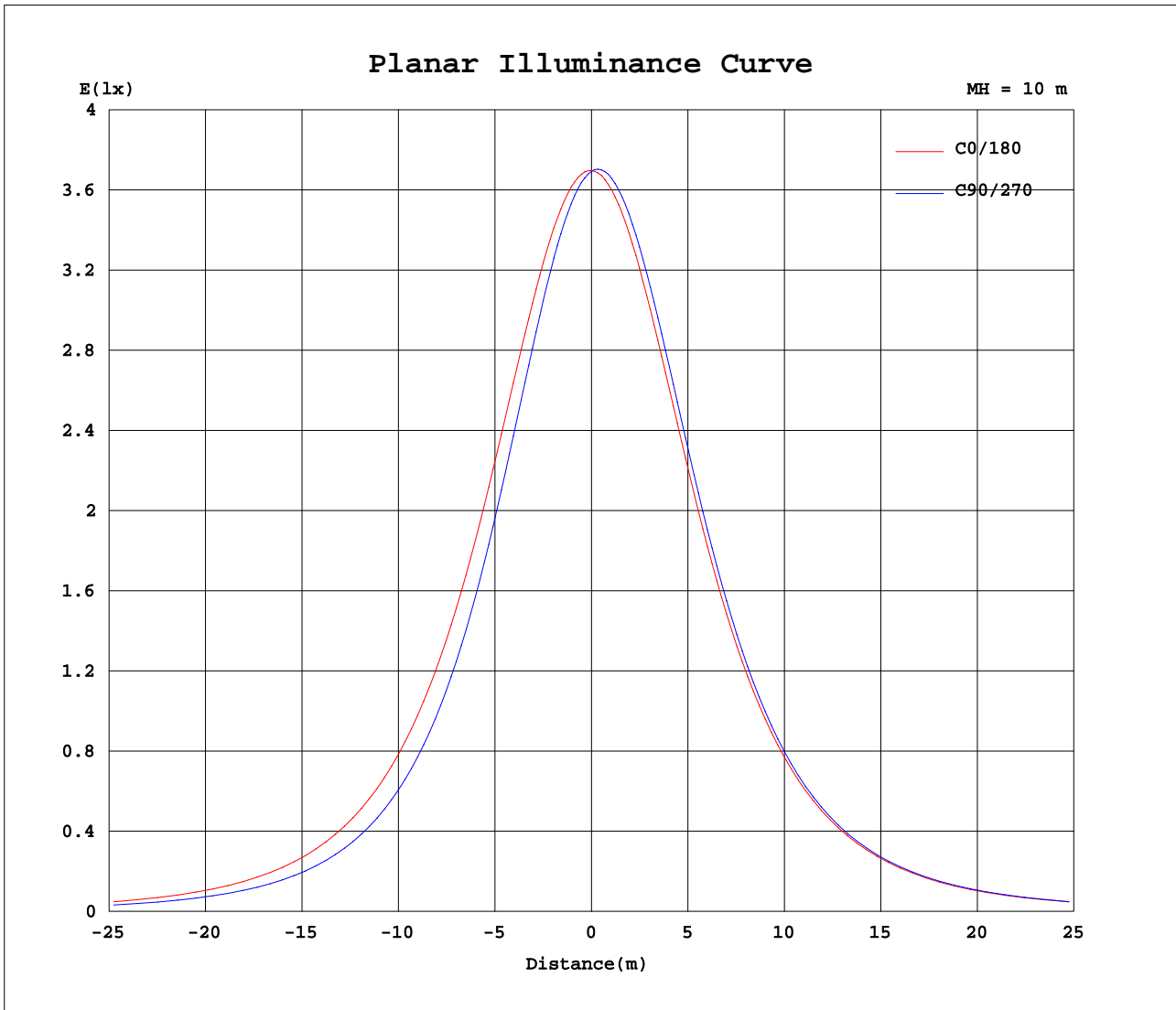
AvgL	cd/m2
L_0~180(65)av	14697
L_0~180(75)av	12739
L_0~180(85)av	10065
L_90~270(65)av	12595
L_90~270(75)av	10504
L_90~270(85)av	7249
L_45(65)av	13579
L_45(75)av	11537
L_45(85)av	8221

Standard: GB/T 29293-2012

C Range: 0 - 360DEG  
 C Interval: 22.5DEG  
 Test Speed: HIGH  
 Temperature:25.3DEG  
 Operators:David  
 Test Date:2017-06-07

γ Range: 0 - 180DEG  
 γ Interval: 1.0DEG  
 Test System:EVERFINE GO-R5000\_V2 SYSTEM V2.0.351  
 Humidity:45%  
 Test Distance:2.447m [K=1.0000]  
 Remarks:

Planar Illuminance Curve



C Range: 0 - 360DEG  
 C Interval: 22.5DEG  
 Test Speed: HIGH  
 Temperature: 25.3DEG  
 Operators: David  
 Test Date: 2017-06-07

$\gamma$  Range: 0 - 180DEG  
 $\gamma$  Interval: 1.0DEG  
 Test System: EVERFINE GO-R5000\_V2 SYSTEM V2.0.351  
 Humidity: 45%  
 Test Distance: 2.447m [K=1.0000]  
 Remarks:

LUMINOUS DISTRIBUTION INTENSITY DATA

Test:U:120.1V I:0.1066A P:12.74W PF:0.9955 Lamp Flux:910.097x1 lm		
NAME: ASD-UCS-24D12CC-XX 2700K	TYPE:N/A	WEIGHT:N/A
SPEC.:N/A	DIM.: N/A	SERIAL No.:N/A
MFR.: ASD Lighting Corp	SUR.:N/A	Shielding Angle:N/A

Table--1

UNIT: cd

C(DEG) γ (DEG)	0	22.5	45	67.5	90	112.5	135	157.5	180	202.5	225	247.5	270	292.5	315	337.5			
0	369	369	369	369	369	369	369	369	369	369	369	369	369	369	369	369			
5	368	366	364	362	361	362	363	364	367	369	370	371	372	372	371	370			
10	362	358	353	350	348	348	351	355	360	363	366	368	369	369	368	366			
15	352	345	338	333	330	331	335	342	348	354	357	360	361	361	360	357			
20	338	329	319	311	308	310	316	324	334	340	344	346	348	348	348	345			
25	320	309	297	287	283	285	293	304	315	322	326	328	329	331	331	328			
30	299	287	272	260	255	258	268	281	294	301	305	306	307	309	310	307			
35	275	262	246	233	227	231	242	256	270	278	281	281	282	284	286	284			
40	249	235	218	205	199	203	214	230	244	252	254	254	255	257	259	258			
45	222	208	191	177	172	175	187	203	218	225	226	226	226	228	231	230			
50	194	180	163	151	146	149	160	175	190	197	198	196	196	198	202	202			
55	165	152	137	125	121	124	134	148	162	168	169	167	167	169	172	173			
60	137	125	112	101	97.0	100	109	122	134	140	141	139	138	141	144	144			
65	109	99.0	87.1	78.2	74.9	77.5	85.6	96.5	107	112	112	111	110	112	115	115			
70	82.4	74.0	64.1	56.8	54.0	56.4	63.1	72.2	81.4	85.4	85.8	84.6	84.2	85.5	87.5	87.7			
75	57.4	50.4	42.6	36.9	34.9	36.7	42.0	49.3	57.4	60.6	61.0	60.1	59.7	60.7	62.2	62.1			
80	34.5	29.4	23.3	19.4	18.2	19.3	23.0	28.8	35.3	38.0	38.3	37.6	37.3	37.9	38.9	38.8			
85	14.7	10.6	6.68	5.35	4.92	5.46	6.94	10.5	15.9	17.9	18.0	17.4	17.1	17.5	18.2	18.1			
90	0.07	0.05	0.05	0.05	0.05	0.05	0.07	0.07	0.12	1.15	1.66	1.97	2.03	1.91	1.58	1.01			
95	0.06	0.06	0.06	0.06	0.06	0.07	0.07	0.07	0.03	0.03	0.03	0.04	0.04	0.03	0.03	0.03			
100	0.08	0.08	0.08	0.08	0.08	0.08	0.08	0.08	0.04	0.04	0.04	0.03	0.03	0.03	0.03	0.04			
105	0.09	0.09	0.10	0.10	0.10	0.10	0.10	0.10	0.05	0.05	0.05	0.04	0.04	0.04	0.04	0.05			
110	0.10	0.10	0.11	0.11	0.11	0.11	0.11	0.10	0.07	0.07	0.06	0.06	0.05	0.05	0.06	0.06			
115	0.11	0.11	0.12	0.12	0.12	0.12	0.12	0.11	0.09	0.09	0.08	0.07	0.07	0.07	0.07	0.08			
120	0.12	0.13	0.13	0.13	0.13	0.13	0.13	0.12	0.11	0.11	0.10	0.09	0.09	0.09	0.09	0.10			
125	0.14	0.15	0.15	0.15	0.15	0.15	0.15	0.15	0.13	0.13	0.12	0.11	0.11	0.11	0.11	0.12			
130	0.17	0.18	0.18	0.18	0.18	0.18	0.18	0.18	0.16	0.15	0.14	0.13	0.13	0.13	0.13	0.14			
135	0.21	0.22	0.23	0.23	0.23	0.23	0.22	0.22	0.18	0.17	0.17	0.16	0.15	0.15	0.15	0.16			
140	0.27	0.28	0.29	0.29	0.29	0.29	0.28	0.28	0.20	0.20	0.19	0.19	0.18	0.18	0.18	0.19			
145	0.35	0.36	0.37	0.37	0.37	0.37	0.36	0.35	0.22	0.22	0.22	0.22	0.21	0.21	0.21	0.21			
150	0.43	0.43	0.45	0.45	0.45	0.45	0.44	0.43	0.25	0.24	0.24	0.24	0.24	0.24	0.24	0.24			
155	0.48	0.49	0.50	0.51	0.50	0.50	0.49	0.48	0.29	0.28	0.28	0.29	0.29	0.28	0.28	0.28			
160	0.53	0.53	0.55	0.55	0.55	0.54	0.53	0.52	0.31	0.31	0.31	0.31	0.31	0.31	0.31	0.31			
165	0.53	0.54	0.55	0.55	0.55	0.54	0.53	0.53	0.33	0.33	0.33	0.33	0.33	0.33	0.33	0.33			
170	0.53	0.53	0.54	0.54	0.53	0.53	0.52	0.52	0.35	0.35	0.34	0.35	0.35	0.34	0.35	0.35			
175	0.50	0.50	0.50	0.51	0.50	0.50	0.49	0.49	0.40	0.40	0.40	0.39	0.39	0.39	0.39	0.40			
180	0.45	0.45	0.45	0.45	0.46	0.45	0.44	0.45	0.45	0.45	0.45	0.45	0.45	0.46	0.45	0.45			

C Range: 0 - 360DEG  
 C Interval: 22.5DEG  
 Test Speed: HIGH  
 Temperature:25.3DEG  
 Operators:David  
 Test Date:2017-06-07

γ Range: 0 - 180DEG  
 γ Interval: 1.0DEG  
 Test System:EVERFINE GO-R5000\_V2 SYSTEM V2.0.351  
 Humidity:45%  
 Test Distance:2.447m [K=1.0000]  
 Remarks: