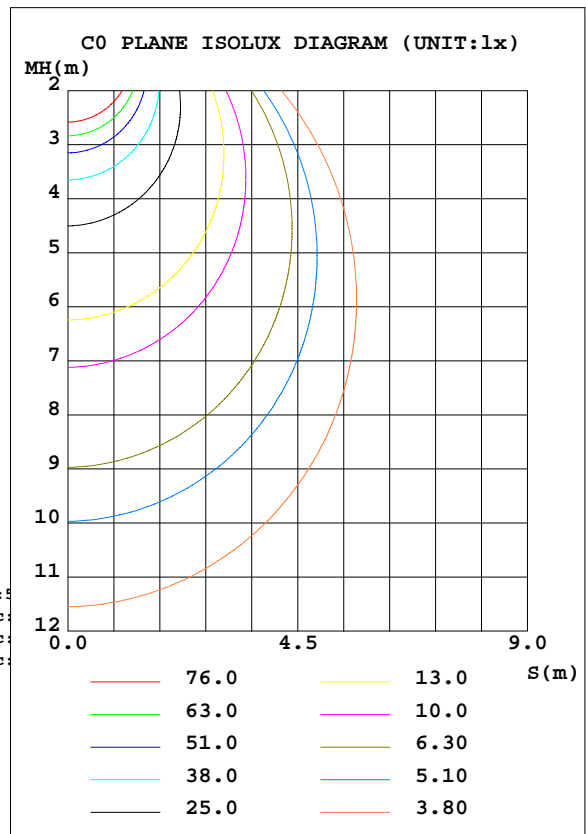
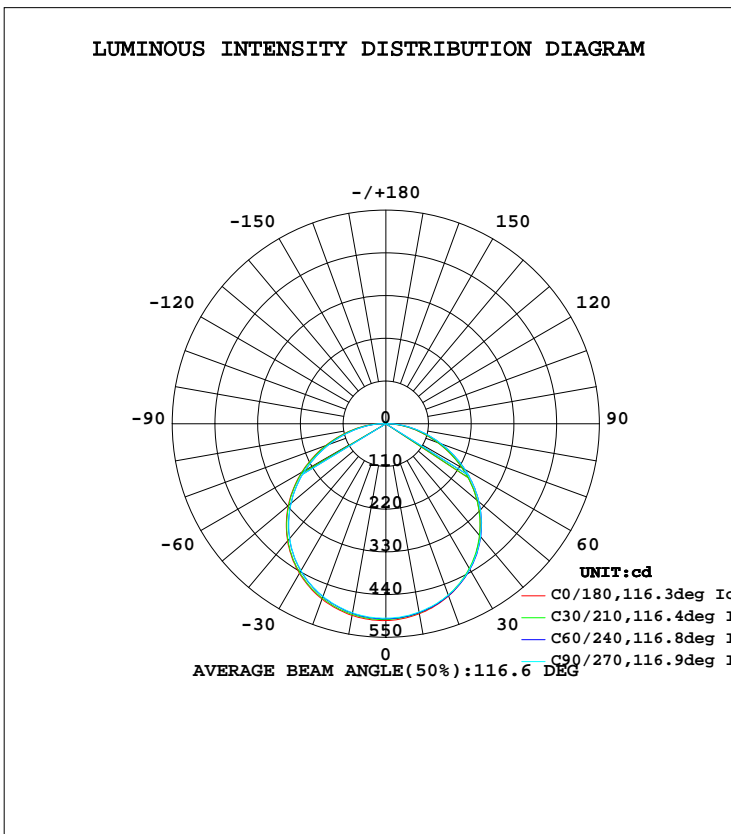


LUMINAIRE PHOTOMETRIC TEST REPORT

Test:U:119.9V I:0.2045A P:23.19W PF:0.9462 Lamp Flux:1555.25x1 lm		
NAME: ASD-MPR-12D2430-WH	TYPE:	WEIGHT:
SPEC.:	DIM.:	SERIAL No.:
MFR.: ASD Lighting corp.	SUR.:	PROTECTION ANGLE:

DATA OF LAMP		PHOTOMETRIC DATA Eff: 67.07 lm/W			
MODEL	ASD-MPR-12D2430-WH	I _{max} (cd)	507.0	S/MH(C0/180)	1.30
NOMINAL POWER(W)	24	LOR(%)	100.0	S/MH(C90/270)	1.30
RATED VOLTAGE(V)	120	TOTAL FLUX(lm)	1555.2	η UP, DN(C0-180)	1.0,48.2
NOMINAL FLUX(lm)	1555.25	CIE CLASS	DIRECT	η UP, DN(C180-360)	1.1,49.8
LAMPS INSIDE	1	η up(%)	2.1	CIBSE SHR NOM	1.25
TEST VOLTAGE(V)		η down(%)	97.9	CIBSE SHR MAX	1.35



C Range: 0 - 360DEG
 C Interval: 15.0DEG
 Test Speed: HIGH
 Temperature:25.3DEG
 Operators: Test
 Date:2020-05-06

γ Range: 0 - 180DEG
 γ Interval: 1.0DEG
 Test System:EVERFINE GO-2000B_V1 SYSTEM V2.0.291
 Humidity:65.0%
 Test Distance:7.500m [K=1.0000]
 Remarks:

ZONAL FLUX DIAGRAM

ZONAL FLUX DIAGRAM:

γ	C0	C45	C90	C135	C180	C225	C270	C315	γ	Φ zone	Φ total	Φ lum, lamp
10	497.0	493.9	492.2	490.8	500.9	496.8	494.1	492.6	0- 10	47.53	47.53	3.06,3.06
20	472.2	469.7	469.6	468.1	480.5	476.2	472.8	471.2	10- 20	136.9	184.4	11.9,11.9
30	431.7	430.9	431.8	430.4	445.3	440.8	436.8	434.6	20- 30	209.8	394.3	25.4,25.4
40	376.2	376.9	379.2	377.7	394.0	389.9	385.3	382.3	30- 40	256.7	651.0	41.9,41.9
50	306.7	308.8	312.7	311.0	327.9	323.6	318.7	315.8	40- 50	270.1	921.0	59.2,59.2
60	226.7	229.4	235.2	233.8	250.5	245.6	240.6	237.9	50- 60	247.7	1169	75.1,75.1
70	141.7	145.6	152.0	150.0	165.4	161.0	155.4	154.5	60- 70	193.0	1362	87.6,87.6
80	64.92	68.95	73.86	72.00	83.30	78.40	74.55	74.97	70- 80	118.6	1480	95.2,95.2
90	4.013	3.963	4.019	5.017	16.90	13.20	9.895	7.682	80- 90	42.87	1523	97.9,97.9
100	4.240	4.190	4.151	4.156	4.961	4.929	4.914	4.903	90-100	5.147	1528	98.3,98.3
110	4.490	4.452	4.406	4.406	5.165	5.134	5.119	5.099	100-110	4.930	1533	98.6,98.6
120	4.733	4.691	4.648	4.641	5.346	5.315	5.303	5.280	110-120	4.845	1538	98.9,98.9
130	4.991	4.938	4.910	4.895	5.511	5.473	5.457	5.434	120-130	4.559	1543	99.2,99.2
140	5.299	5.246	5.214	5.192	5.689	5.642	5.631	5.603	130-140	4.107	1547	99.5,99.5
150	5.626	5.577	5.542	5.527	5.870	5.823	5.796	5.773	140-150	3.485	1550	99.7,99.7
160	5.961	5.916	5.877	5.873	6.062	6.023	6.001	5.981	150-160	2.688	1553	99.9,99.9
170	6.227	6.193	6.154	6.135	6.262	6.208	6.189	6.162	160-170	1.718	1555	100,100
180	6.347	6.328	6.281	6.281	6.362	6.320	6.285	6.278	170-180	0.5949	1555	100,100
DEG	LUMINOUS INTENSITY:cd									UNIT:lm		

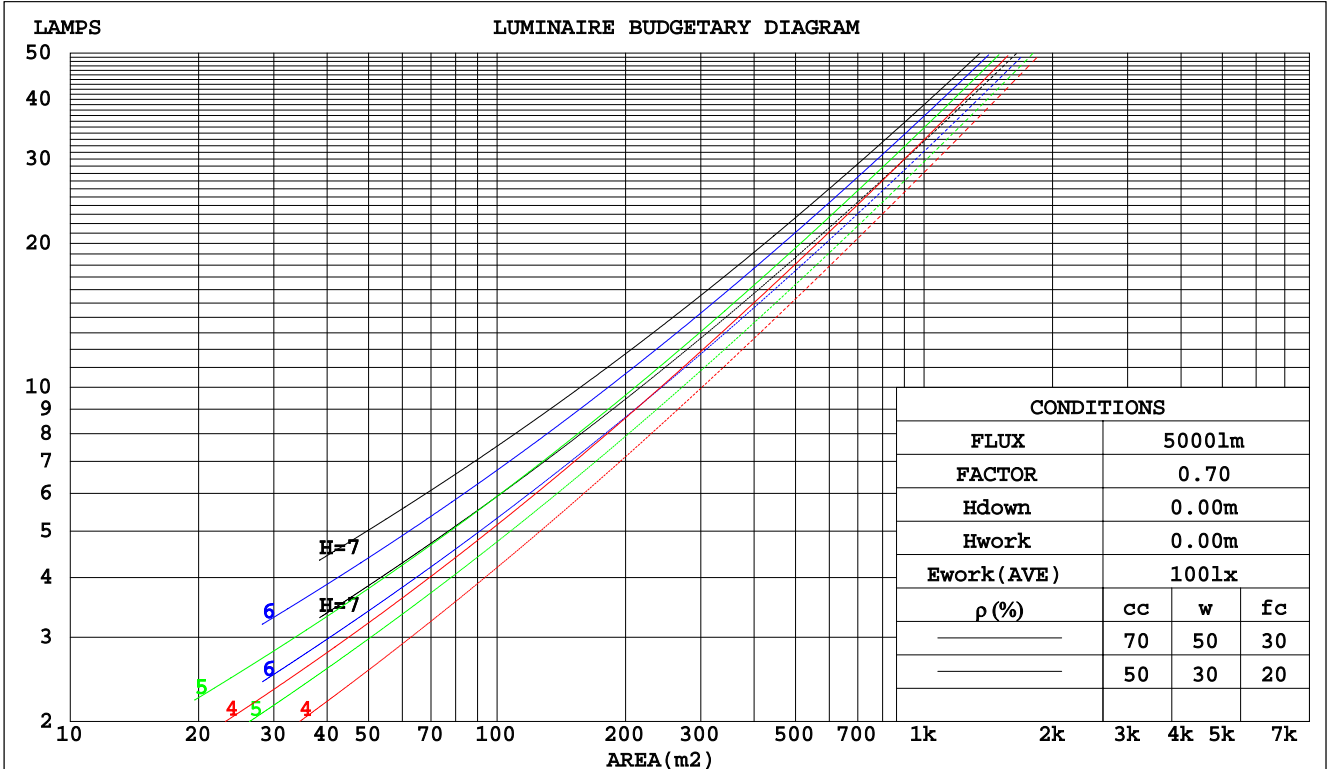
C Range: 0 - 360DEG
C Interval: 15.0DEG
Test Speed: HIGH
Temperature:25.3DEG
Operators: Test
Date:2020-05-06

γ Range: 0 - 180DEG
 γ Interval: 1.0DEG
Test System:EVERFINE GO-2000B_V1 SYSTEM V2.0.291
Humidity:65.0%
Test Distance:7.500m [K=1.0000]
Remarks:

CU AND LUMINAIRE BUDGETARY ESTIMATE DIAGRAM

Test:U:119.9V I:0.2045A P:23.19W PF:0.9462 Lamp Flux:1555.25x1 lm		
NAME: ASD-MPR-12D2430-WH	TYPE:	WEIGHT:
SPEC.:	DIM.:	SERIAL No.:
MFR.: ASD Lighting corp.	SUR.:	PROTECTION ANGLE:

pcc	80%			70%			50%			30%			10%			0
pw	50%	30%	10%	50%	30%	10%	50%	30%	10%	50%	30%	10%	50%	30%	10%	0
pfc	20%			20%			20%			20%			20%			0
RCR	RCR:Room Cavity Ratio															
	Coefficients of Utilization(CU)															
0.0	1.19	1.19	1.19	1.16	1.16	1.16	1.10	1.10	1.10	1.05	1.05	1.05	1.00	1.00	1.00	.98
1.0	1.03	.98	.94	1.00	.96	.92	.96	.92	.89	.91	.88	.86	.87	.85	.83	.81
2.0	.89	.82	.76	.87	.80	.75	.83	.78	.73	.79	.75	.71	.76	.72	.69	.67
3.0	.78	.70	.63	.76	.68	.62	.73	.66	.61	.70	.64	.59	.67	.62	.58	.56
4.0	.69	.60	.53	.67	.59	.52	.65	.57	.52	.62	.56	.51	.60	.54	.50	.47
5.0	.61	.52	.45	.60	.52	.45	.58	.50	.44	.56	.49	.44	.53	.48	.43	.41
6.0	.55	.46	.40	.54	.45	.39	.52	.44	.39	.50	.43	.38	.48	.42	.38	.36
7.0	.50	.41	.35	.49	.41	.35	.47	.40	.34	.46	.39	.34	.44	.38	.33	.31
8.0	.46	.37	.31	.45	.36	.31	.43	.36	.30	.42	.35	.30	.40	.34	.30	.28
9.0	.42	.33	.28	.41	.33	.28	.40	.32	.27	.38	.32	.27	.37	.31	.27	.25
10.0	.38	.30	.25	.38	.30	.25	.37	.30	.25	.36	.29	.25	.35	.29	.24	.23



C Range: 0 - 360DEG
 C Interval: 15.0DEG
 Test Speed: HIGH
 Temperature: 25.3DEG
 Operators: Test
 Date: 2020-05-06

γ Range: 0 - 180DEG
 γ Interval: 1.0DEG
 Test System: EVERFINE GO-2000B_V1 SYSTEM V2.0.291
 Humidity: 65.0%
 Test Distance: 7.500m [K=1.0000]
 Remarks:

WEC AND CCEC

Test:U:119.9V I:0.2045A P:23.19W PF:0.9462 Lamp Flux:1555.25x1 lm		
NAME: ASD-MPR-12D2430-WH	TYPE:	WEIGHT:
SPEC.:	DIM.:	SERIAL No.:
MFR.: ASD Lighting corp.	SUR.:	PROTECTION ANGLE:

ρcc	80%			70%			50%			30%			10%			0
ρw	50%	30%	10%	50%	30%	10%	50%	30%	10%	50%	30%	10%	50%	30%	10%	0
ρfc	20%			20%			20%			20%			20%			0
RCR	RCR:Room Cavity Ratio						Wall Exitance Coefficients(WEC)									
0.0																
1.0	.324	.184	.058	.316	.180	.057	.301	.173	.055	.288	.166	.053	.276	.160	.052	
2.0	.300	.165	.050	.293	.162	.050	.281	.156	.048	.269	.151	.047	.258	.146	.046	
3.0	.276	.147	.044	.270	.145	.044	.258	.140	.043	.248	.136	.042	.238	.132	.041	
4.0	.254	.132	.039	.248	.130	.038	.238	.126	.038	.229	.123	.037	.220	.119	.036	
5.0	.234	.119	.034	.229	.117	.034	.220	.114	.034	.211	.112	.033	.203	.109	.033	
6.0	.216	.108	.031	.212	.107	.031	.204	.104	.030	.196	.102	.030	.189	.100	.030	
7.0	.201	.099	.028	.197	.098	.028	.190	.096	.028	.183	.094	.027	.176	.092	.027	
8.0	.187	.092	.026	.184	.091	.026	.177	.089	.025	.171	.087	.025	.165	.085	.025	
9.0	.175	.085	.024	.172	.084	.024	.166	.082	.023	.161	.081	.023	.156	.079	.023	
10.0	.165	.079	.022	.162	.078	.022	.157	.077	.022	.151	.075	.021	.147	.074	.021	

ρcc	80%			70%			50%			30%			10%			0
ρw	50%	30%	10%	50%	30%	10%	50%	30%	10%	50%	30%	10%	50%	30%	10%	0
ρfc	20%			20%			20%			20%			20%			0
RCR	RCR:Room Cavity Ratio						Ceiling Cavity Exitance Coefficients(CCEC)									
0.0	.206	.206	.206	.176	.176	.176	.120	.120	.120	.069	.069	.069	.022	.022	.022	
1.0	.197	.172	.149	.169	.147	.128	.115	.101	.089	.066	.059	.052	.021	.019	.017	
2.0	.189	.148	.113	.162	.127	.098	.111	.088	.068	.064	.051	.040	.021	.017	.013	
3.0	.182	.130	.089	.156	.112	.078	.107	.078	.054	.062	.046	.032	.020	.015	.011	
4.0	.174	.117	.074	.149	.101	.064	.103	.071	.045	.059	.041	.027	.019	.013	.009	
5.0	.167	.107	.063	.143	.092	.055	.099	.065	.039	.057	.038	.023	.018	.012	.008	
6.0	.159	.099	.055	.137	.085	.048	.094	.060	.034	.055	.035	.020	.018	.011	.007	
7.0	.152	.092	.049	.131	.080	.043	.091	.056	.030	.053	.033	.018	.017	.011	.006	
8.0	.146	.086	.045	.126	.075	.039	.087	.052	.028	.051	.031	.016	.016	.010	.005	
9.0	.140	.081	.041	.120	.070	.036	.083	.049	.026	.049	.029	.015	.016	.010	.005	
10.0	.134	.077	.039	.116	.067	.034	.080	.047	.024	.047	.028	.014	.015	.009	.005	

C Range: 0 - 360DEG
 C Interval: 15.0DEG
 Test Speed: HIGH
 Temperature:25.3DEG
 Operators: Test
 Date:2020-05-06

γ Range: 0 - 180DEG
 γ Interval: 1.0DEG
 Test System:EVERFINE GO-2000B_V1 SYSTEM V2.0.291
 Humidity:65.0%
 Test Distance:7.500m [K=1.0000]
 Remarks:

UGR(Unified Glare Rating) Table

Test:U:119.9V I:0.2045A P:23.19W PF:0.9462 Lamp Flux:1555.25x1 lm										
NAME: ASD-MPR-12D2430-WH					TYPE:			WEIGHT:		
SPEC.:					DIM.:			SERIAL No.:		
MFR.: ASD Lighting corp.					SUR.:			PROTECTION ANGLE:		
ceiling/cavity	0.7	0.7	0.5	0.5	0.3	0.7	0.7	0.5	0.5	0.3
walls	0.5	0.3	0.5	0.3	0.3	0.5	0.3	0.5	0.3	0.3
working plane	0.2	0.2	0.2	0.2	0.2	0.2	0.2	0.2	0.2	0.2
Room dimensions	Viewed crosswise					Viewed endwise				
x = 2H y = 2H	18.0	19.5	18.3	19.8	20.0	18.2	19.7	18.5	20.0	20.2
3H	19.5	20.9	19.9	21.2	21.5	19.8	21.2	20.2	21.5	21.8
4H	20.2	21.5	20.5	21.8	22.1	20.5	21.8	20.9	22.1	22.4
6H	20.6	21.9	21.0	22.2	22.5	21.1	22.3	21.4	22.6	23.0
8H	20.8	22.0	21.2	22.4	22.7	21.3	22.5	21.7	22.8	23.2
12H	20.9	22.1	21.3	22.4	22.8	21.5	22.6	21.8	23.0	23.3
4H 2H	18.6	20.0	19.0	20.3	20.6	18.8	20.1	19.1	20.4	20.7
3H	20.3	21.5	20.7	21.8	22.2	20.6	21.8	21.0	22.1	22.5
4H	21.1	22.2	21.5	22.5	22.9	21.4	22.5	21.9	22.9	23.3
6H	21.7	22.7	22.2	23.1	23.5	22.2	23.1	22.6	23.5	23.9
8H	22.0	22.8	22.4	23.3	23.7	22.5	23.3	22.9	23.7	24.2
12H	22.1	23.0	22.6	23.4	23.8	22.7	23.5	23.1	23.9	24.4
8H 4H	21.4	22.3	21.9	22.7	23.1	21.7	22.6	22.2	23.0	23.4
6H	22.2	22.9	22.7	23.4	23.9	22.6	23.4	23.1	23.8	24.3
8H	22.5	23.2	23.0	23.7	24.2	23.0	23.7	23.5	24.1	24.6
12H	22.8	23.4	23.3	23.9	24.4	23.4	23.9	23.9	24.4	25.0
12H 4H	21.4	22.3	21.9	22.7	23.1	21.7	22.5	22.2	23.0	23.4
6H	22.3	23.0	22.8	23.4	23.9	22.7	23.3	23.2	23.8	24.3
8H	22.7	23.2	23.2	23.7	24.3	23.1	23.7	23.7	24.2	24.7
Variations with the observer position at spacings:										
S = 1.0H	+ 0.1 / - 0.2					+ 0.1 / - 0.2				
1.5H	+ 0.2 / - 0.3					+ 0.2 / - 0.3				
2.0H	+ 0.1 / - 0.3					+ 0.1 / - 0.3				

CIE Pub.117 Corrected 1555 lm Total Lamp Luminous Flux.(8log(F/F0) = 1.5)

C Range: 0 - 360DEG
 C Interval: 15.0DEG
 Test Speed: HIGH
 Temperature:25.3DEG
 Operators: Test
 Date:2020-05-06

γ Range: 0 - 180DEG
 γ Interval: 1.0DEG
 Test System:EVERFINE GO-2000B_V1 SYSTEM V2.0.291
 Humidity:65.0%
 Test Distance:7.500m [K=1.0000]
 Remarks:

UTILIZATION FACTORS TABLE

Test:U:119.9V I:0.2045A P:23.19W PF:0.9462 Lamp Flux:1555.25x1 lm		
NAME: ASD-MPR-12D2430-WH	TYPE:	WEIGHT:
SPEC.:	DIM.:	SERIAL No.:
MFR.: ASD Lighting corp.	SUR.:	PROTECTION ANGLE:

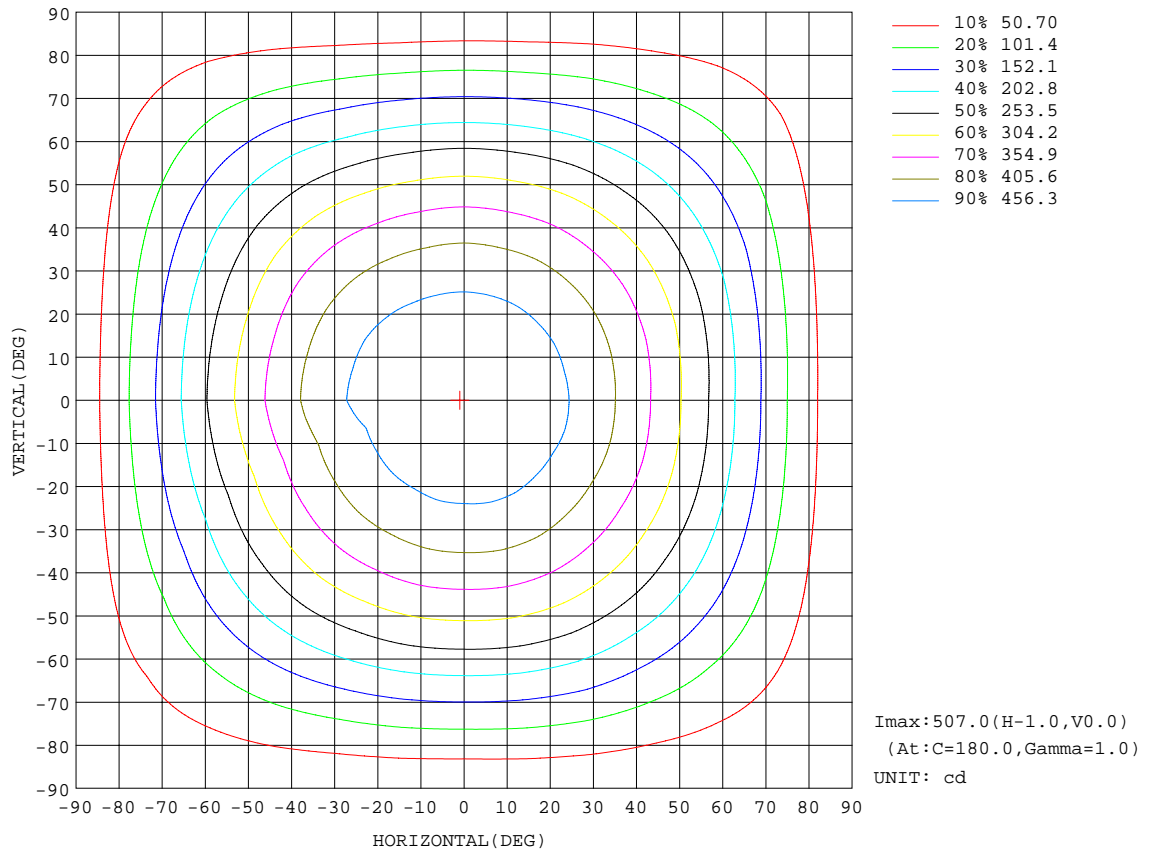
REFLECTANCE										
Ceiling	0.8	0.8	0.8	0.7	0.7	0.7	0.5	0.5	0.5	0
Walls	0.7	0.5	0.3	0.7	0.5	0.3	0.7	0.5	0.3	0
Working plane	0.2	0.2	0.2	0.2	0.2	0.2	0.2	0.2	0.2	0
ROOM INDEX	UTILIZATION FACTORS(PERCENT) $k(RI) \times RCR = 5$									
k = 0.60	56	44	37	55	44	37	54	43	37	30
0.80	66	54	46	65	53	46	63	53	46	39
1.00	74	63	55	73	62	55	70	63	54	47
1.25	81	70	63	80	70	63	77	68	62	54
1.50	86	76	69	85	75	68	81	73	67	59
2.00	93	84	78	91	83	77	88	81	75	67
2.50	97	89	83	95	88	82	91	85	80	71
3.00	101	94	88	98	92	87	94	89	84	75
4.00	105	99	94	102	97	92	98	93	90	80
5.00	107	102	98	105	100	96	100	96	93	83
ROOM INDEX	UF(total)									Direct
According to DIN EN 13032-2 2004			Suspended				SHRNOM = 1.25			

C Range: 0 - 360DEG
 C Interval: 15.0DEG
 Test Speed: HIGH
 Temperature:25.3DEG
 Operators: Test
 Date:2020-05-06

γ Range: 0 - 180DEG
 γ Interval: 1.0DEG
 Test System:EVERFINE GO-2000B_V1 SYSTEM V2.0.291
 Humidity:65.0%
 Test Distance:7.500m [K=1.0000]
 Remarks:

ISOCANDELA DIAGRAM

Test:U:119.9V I:0.2045A P:23.19W PF:0.9462 Lamp Flux:1555.25x1 lm		
NAME: ASD-MPR-12D2430-WH	TYPE:	WEIGHT:
SPEC.:	DIM.:	SERIAL No.:
MFR.: ASD Lighting corp.	SUR.:	PROTECTION ANGLE:

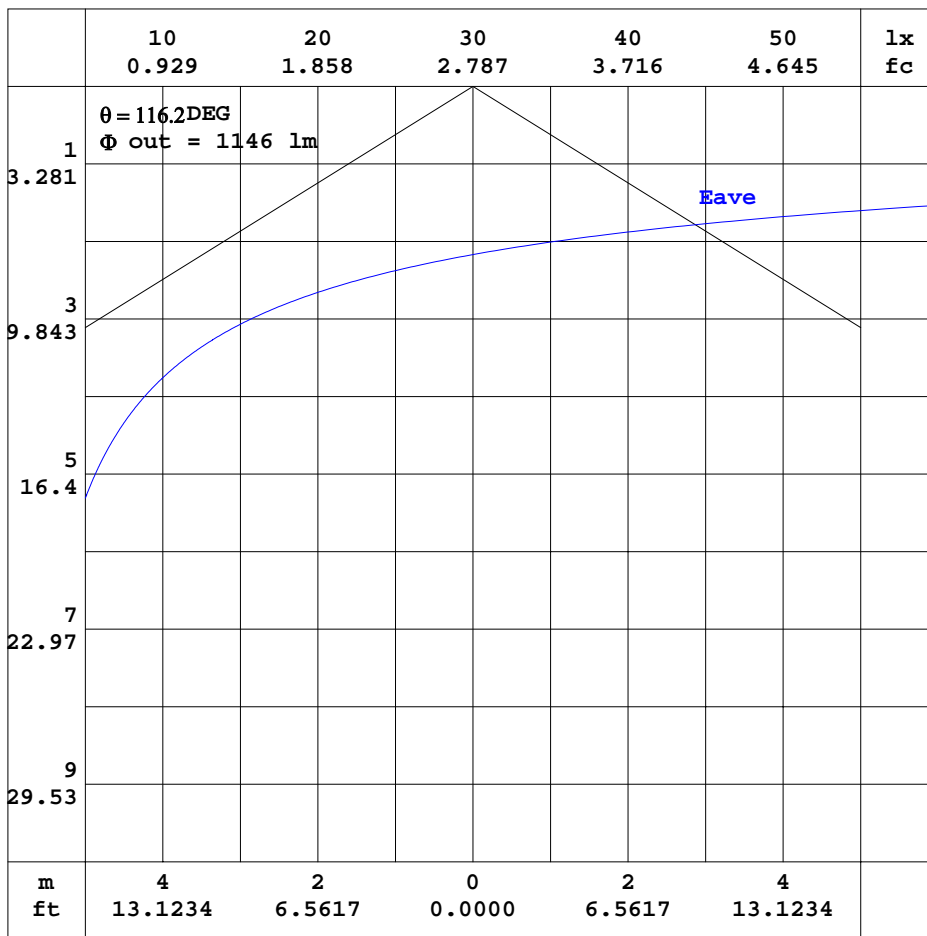


C Range: 0 - 360DEG
 C Interval: 15.0DEG
 Test Speed: HIGH
 Temperature: 25.3DEG
 Operators: Test
 Date: 2020-05-06

γ Range: 0 - 180DEG
 γ Interval: 1.0DEG
 Test System: EVERFINE GO-2000B_V1 SYSTEM V2.0.291
 Humidity: 65.0%
 Test Distance: 7.500m [K=1.0000]
 Remarks:

AAI CURVES

Test:U:119.9V I:0.2045A P:23.19W PF:0.9462 Lamp Flux:1555.25x1 lm		
NAME: ASD-MPR-12D2430-WH	TYPE:	WEIGHT:
SPEC.:	DIM.:	SERIAL No.:
MFR.: ASD Lighting corp.	SUR.:	PROTECTION ANGLE:



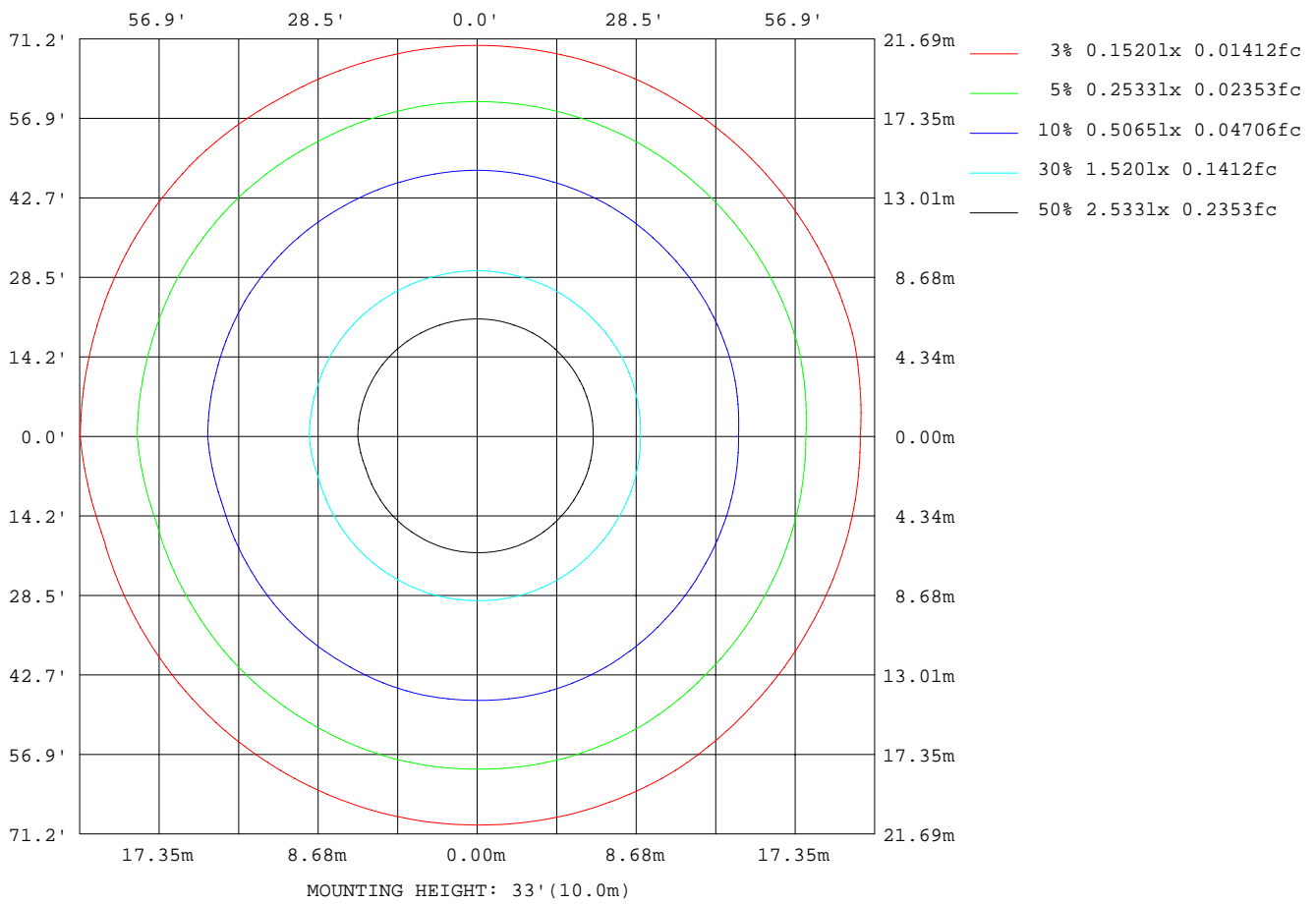
Note: The Curves indicate the illuminated area and the average illumination when the luminaire is at different distance.

C Range: 0 - 360DEG
 C Interval: 15.0DEG
 Test Speed: HIGH
 Temperature: 25.3DEG
 Operators: Test
 Date: 2020-05-06

γ Range: 0 - 180DEG
 γ Interval: 1.0DEG
 Test System: EVERFINE GO-2000B_V1 SYSTEM V2.0.291
 Humidity: 65.0%
 Test Distance: 7.500m [K=1.0000]
 Remarks:

ISOLUX DIAGRAM

Test:U:119.9V I:0.2045A P:23.19W PF:0.9462 Lamp Flux:1555.25x1 lm		
NAME: ASD-MPR-12D2430-WH	TYPE:	WEIGHT:
SPEC.:	DIM.:	SERIAL No.:
MFR.: ASD Lighting corp.	SUR.:	PROTECTION ANGLE:



C Range: 0 - 360DEG
 C Interval: 15.0DEG
 Test Speed: HIGH
 Temperature: 25.3DEG
 Operators: Test
 Date: 2020-05-06

γ Range: 0 - 180DEG
 γ Interval: 1.0DEG
 Test System: EVERFINE GO-2000B_V1 SYSTEM V2.0.291
 Humidity: 65.0%
 Test Distance: 7.500m [K=1.0000]
 Remarks:

LED Avg.L Report

Test:U:119.9V I:0.2045A P:23.19W PF:0.9462 Lamp Flux:1555.25x1 lm		
NAME: ASD-MPR-12D2430-WH	TYPE:	WEIGHT:
SPEC.:	DIM.:	SERIAL No.:
MFR.: ASD Lighting corp.	SUR.:	PROTECTION ANGLE:

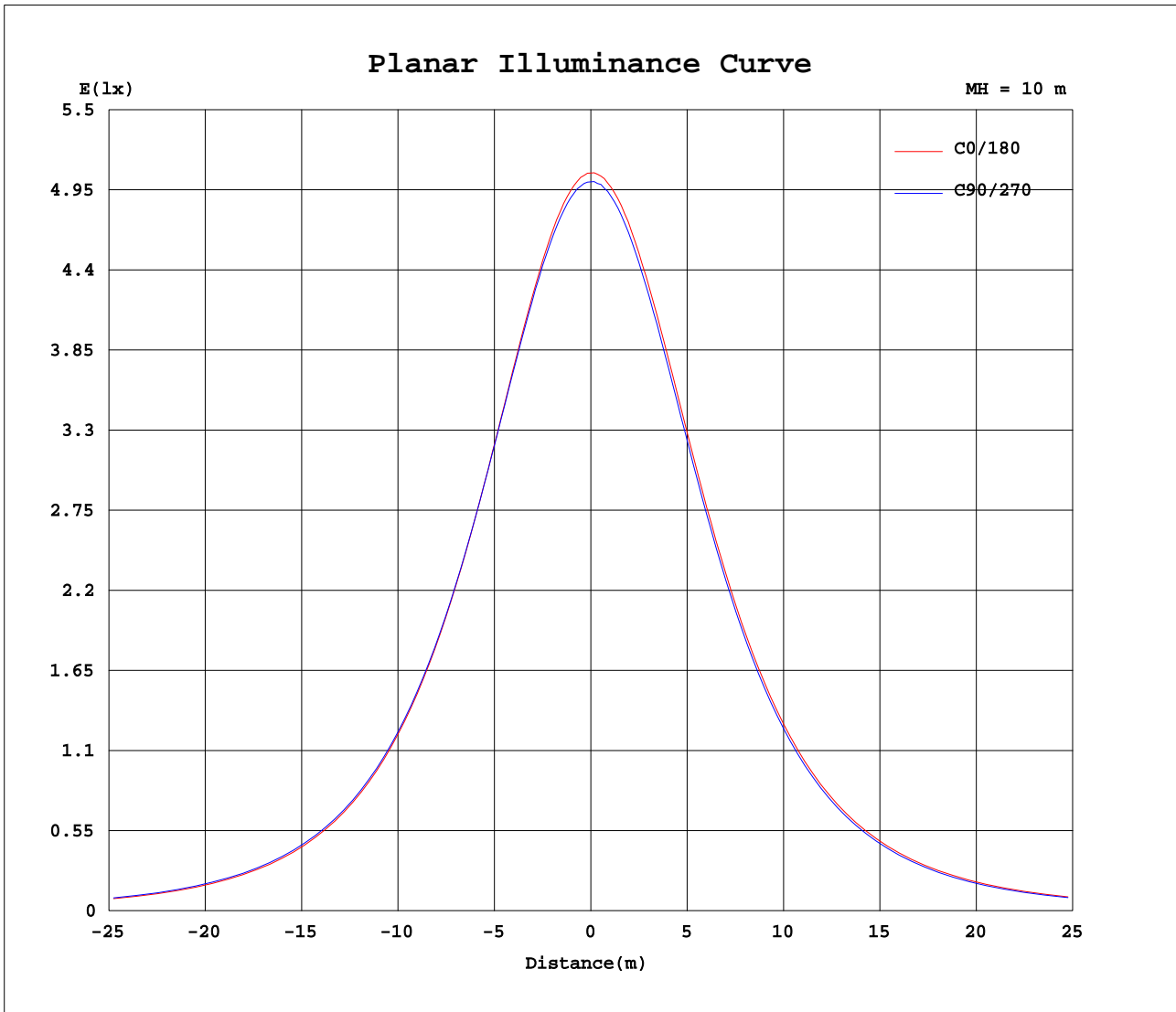
AvgL	cd/m2
L_0~180(65)av	4639
L_0~180(75)av	4333
L_0~180(85)av	4466
L_90~270(65)av	4632
L_90~270(75)av	4353
L_90~270(85)av	4470
L_45(65)av	4609
L_45(75)av	4318
L_45(85)av	4449

Standard: GB/T 29293-2012

C Range: 0 - 360DEG
C Interval: 15.0DEG
Test Speed: HIGH
Temperature:25.3DEG
Operators: Test
Date:2020-05-06

γ Range: 0 - 180DEG
 γ Interval: 1.0DEG
Test System:EVERFINE GO-2000B_V1 SYSTEM V2.0.291
Humidity:65.0%
Test Distance:7.500m [K=1.0000]
Remarks:

Planar Illuminance Curve



C Range: 0 - 360DEG
 C Interval: 15.0DEG
 Test Speed: HIGH
 Temperature: 25.3DEG
 Operators: Test
 Date: 2020-05-06

γ Range: 0 - 180DEG
 γ Interval: 1.0DEG
 Test System: EVERFINE GO-2000B_V1 SYSTEM V2.0.291
 Humidity: 65.0%
 Test Distance: 7.500m [K=1.0000]
 Remarks:

LUMINOUS DISTRIBUTION INTENSITY DATA

Test:U:119.9V I:0.2045A P:23.19W PF:0.9462 Lamp Flux:1555.25x1 lm		
NAME: ASD-MPR-12D2430-WH	TYPE:	WEIGHT:
SPEC.:	DIM.:	SERIAL No.:
MFR.: ASD Lighting corp.	SUR.:	PROTECTION ANGLE:

Table--1

UNIT: cd

C(DEG) γ (DEG)	0	15	30	45	60	75	90	105	120	135	150	165	180	195	210	225	240	255	270
0	507	506	504	503	502	501	500	500	500	499	499	499	507	506	504	503	502	501	500
5	504	503	501	500	500	499	498	498	497	497	497	496	505	505	503	502	501	500	500
10	497	496	494	494	494	493	492	492	491	491	491	490	501	500	499	497	495	494	494
15	486	485	484	484	484	484	482	482	481	481	481	481	492	491	490	488	486	485	485
20	472	471	470	470	471	471	470	469	468	468	467	468	480	479	478	476	474	473	473
25	454	453	452	452	454	454	453	452	451	451	450	451	465	463	463	461	457	457	457
30	432	432	430	431	433	433	432	432	430	430	429	431	445	444	443	441	438	437	437
35	406	406	404	406	409	409	407	407	406	406	405	406	422	420	420	417	414	413	413
40	376	377	375	377	380	381	379	379	377	378	377	378	394	392	392	390	386	384	385
45	343	344	342	344	348	349	347	348	346	346	345	346	363	361	361	358	354	352	354
50	307	307	306	309	313	315	313	313	310	311	310	311	328	326	326	324	319	318	319
55	267	268	267	270	275	277	275	275	272	273	272	274	291	288	289	286	281	280	281
60	227	227	227	229	235	237	235	236	233	234	232	234	251	248	249	246	241	239	241
65	184	185	185	187	194	195	194	193	192	191	191	191	208	206	206	204	198	197	198
70	142	143	143	146	152	153	152	152	150	150	149	150	165	164	163	161	155	155	155
75	101	103	102	105	111	113	112	111	110	110	109	109	123	121	121	119	113	112	114
80	64.9	66.3	66.3	68.9	73.7	75.2	73.9	74.1	72.0	72.0	70.4	70.8	83.3	81.0	81.1	78.4	74.1	72.9	74.5
85	30.5	31.9	31.7	34.1	38.2	39.5	38.3	38.9	37.3	37.7	36.6	37.0	47.3	45.2	45.2	42.9	39.1	38.1	39.7
90	4.01	3.99	3.99	3.96	3.98	3.94	4.02	4.14	4.16	5.02	5.48	7.91	16.9	15.2	15.2	13.2	10.1	8.93	9.90
95	4.12	4.10	4.09	4.07	4.05	4.03	4.04	4.03	4.04	4.04	4.04	4.04	4.86	4.85	4.83	4.83	4.83	4.83	4.81
100	4.24	4.23	4.21	4.19	4.16	4.15	4.15	4.15	4.16	4.16	4.16	4.15	4.96	4.94	4.93	4.93	4.94	4.93	4.91
105	4.36	4.35	4.34	4.32	4.29	4.28	4.28	4.28	4.28	4.28	4.28	4.28	5.06	5.05	5.04	5.03	5.03	5.03	5.01
110	4.49	4.48	4.46	4.45	4.41	4.41	4.41	4.40	4.41	4.41	4.41	4.39	5.16	5.15	5.14	5.13	5.13	5.13	5.12
115	4.61	4.60	4.58	4.58	4.54	4.53	4.54	4.53	4.53	4.53	4.53	4.52	4.51	5.26	5.24	5.24	5.23	5.23	5.21
120	4.73	4.71	4.71	4.69	4.66	4.65	4.65	4.64	4.65	4.64	4.64	4.63	5.35	5.33	5.32	5.31	5.32	5.31	5.30
125	4.85	4.84	4.83	4.81	4.78	4.76	4.77	4.76	4.76	4.76	4.76	4.75	5.42	5.41	5.40	5.39	5.39	5.38	5.37
130	4.99	4.98	4.96	4.94	4.90	4.90	4.91	4.90	4.90	4.90	4.89	4.88	5.51	5.49	5.48	5.47	5.47	5.46	5.46
135	5.14	5.13	5.11	5.09	5.06	5.05	5.06	5.05	5.05	5.05	5.04	5.04	5.60	5.57	5.57	5.56	5.55	5.55	5.54
140	5.30	5.28	5.27	5.25	5.21	5.20	5.21	5.20	5.20	5.19	5.20	5.19	5.69	5.67	5.65	5.64	5.64	5.63	5.63
145	5.46	5.44	5.42	5.41	5.37	5.37	5.38	5.36	5.36	5.35	5.36	5.36	5.78	5.75	5.75	5.73	5.72	5.72	5.71
150	5.63	5.60	5.59	5.58	5.55	5.53	5.54	5.53	5.53	5.53	5.53	5.52	5.87	5.85	5.83	5.82	5.80	5.80	5.80
155	5.80	5.78	5.76	5.75	5.71	5.71	5.71	5.70	5.70	5.70	5.70	5.69	5.97	5.94	5.93	5.92	5.90	5.90	5.89
160	5.96	5.95	5.92	5.92	5.88	5.88	5.88	5.87	5.87	5.87	5.87	5.86	6.06	6.04	6.03	6.02	6.01	6.00	6.00
165	6.11	6.10	6.07	6.07	6.05	6.04	6.03	6.03	6.02	6.02	6.02	6.01	6.17	6.14	6.14	6.12	6.11	6.11	6.10
170	6.23	6.21	6.19	6.19	6.17	6.16	6.15	6.14	6.14	6.14	6.13	6.13	6.26	6.24	6.23	6.21	6.20	6.19	6.19
175	6.30	6.30	6.28	6.28	6.25	6.24	6.23	6.23	6.23	6.22	6.22	6.22	6.32	6.30	6.31	6.29	6.27	6.25	6.25
180	6.35	6.35	6.33	6.33	6.30	6.30	6.28	6.27	6.28	6.28	6.27	6.27	6.36	6.33	6.34	6.32	6.30	6.29	6.29

C Range: 0 - 360DEG
 C Interval: 15.0DEG
 Test Speed: HIGH
 Temperature:25.3DEG
 Operators: Test
 Date:2020-05-06

γ Range: 0 - 180DEG
 γ Interval: 1.0DEG
 Test System:EVERFINE GO-2000B_V1 SYSTEM V2.0.291
 Humidity:65.0%
 Test Distance:7.500m [K=1.0000]
 Remarks:

LUMINOUS DISTRIBUTION INTENSITY DATA

Test:U:119.9V I:0.2045A P:23.19W PF:0.9462 Lamp Flux:1555.25x1 lm		
NAME: ASD-MPR-12D2430-WH	TYPE:	WEIGHT:
SPEC.:	DIM.:	SERIAL No.:
MFR.: ASD Lighting corp.	SUR.:	PROTECTION ANGLE:

Table--2

UNIT: cd

C(DEG) γ (DEG)	285	300	315	330	345														
0	500	500	499	499	499														
5	499	499	498	498	497														
10	493	493	493	492	491														
15	484	485	484	483	483														
20	472	472	471	471	470														
25	456	456	455	455	453														
30	436	436	435	435	433														
35	412	412	411	411	408														
40	384	384	382	382	380														
45	352	353	351	350	349														
50	317	318	316	315	314														
55	279	280	278	278	276														
60	239	240	238	238	236														
65	198	197	196	196	195														
70	155	156	155	154	153														
75	114	114	113	113	112														
80	74.1	75.9	75.0	75.8	74.6														
85	39.5	41.2	40.5	41.1	39.9														
90	9.30	10.5	7.68	6.90	5.07														
95	4.81	4.80	4.81	4.80	4.80														
100	4.91	4.90	4.90	4.90	4.89														
105	5.01	5.00	5.00	5.00	5.00														
110	5.11	5.10	5.10	5.10	5.10														
115	5.21	5.20	5.20	5.19	5.20														
120	5.29	5.28	5.28	5.28	5.28														
125	5.36	5.35	5.36	5.35	5.36														
130	5.44	5.43	5.43	5.43	5.44														
135	5.52	5.51	5.51	5.51	5.52														
140	5.61	5.60	5.60	5.60	5.61														
145	5.70	5.68	5.69	5.69	5.70														
150	5.78	5.78	5.77	5.78	5.78														
155	5.88	5.88	5.87	5.87	5.88														
160	5.98	5.98	5.98	5.97	5.98														
165	6.09	6.08	6.08	6.07	6.08														
170	6.18	6.17	6.16	6.15	6.16														
175	6.24	6.24	6.24	6.24	6.22														
180	6.27	6.28	6.28	6.27	6.25														

C Range: 0 - 360DEG
 C Interval: 15.0DEG
 Test Speed: HIGH
 Temperature:25.3DEG
 Operators: Test
 Date:2020-05-06

γ Range: 0 - 180DEG
 γ Interval: 1.0DEG
 Test System:EVERFINE GO-2000B_V1 SYSTEM V2.0.291
 Humidity:65.0%
 Test Distance:7.500m [K=1.0000]
 Remarks: