



# LED SECURITY FLOODLIGHT WITH MOTION SENSOR AND CAMERA

► **DESIGN** - LED SECURITY FLOODLIGHT WITH MOTION SENSOR AND CAMERA is a great way to keep your home safe at night. Side-to-side (150°) and up and down (180°) rotatable light heads allow you to direct light where it is needed. It is designed to operate on 120V circuits.

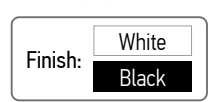
► **SMART SECURITY CAMERA WITH APP CONTROL** - Allows you to monitor, record and have two-way audio communications on demand, or when a motion is detected. It is compatible with Alexa and Google Assistant. Motion activated push notification will inform you whenever motion is detected. Records can be stored on a Micro SD card, or in Cloud service.

► **COLOR SELECTABLE** - You can choose either a 2,700K, 3,000K warm white, 3,500K, 4,000K cool white or 5,000K daylight color temperature.

► **APPLICATION** - Perfect commercial or industrial solution for both indoor and outdoor applications such as: porches, backyards, front doors, driveways, walkways, workshops, storage rooms, and more. It is also Wet Locations rated.

► **ADVANTAGES** - With a lifespan of 145,000 hours, these fixtures are made to last decades under normal operation! ASD provides a 5-year limited warranty along with UL and DLC Premium certifications to guarantee top quality products and safety!

Catalog number	
Notes	
Type	



Model	Head q-ty	Watts	Voltage	Dimmable	Lumens	CCT	Finish	Dimensions (LxWxH)
ASD-SFL-20WH-SC	2 square heads	20W	120V	-	up to 2,017 lm	5CCT (2,700/3,000/3,500/4,000/5,000K)	White	10-1/4" x 4-7/16" x 7-11/16"
ASD-SFL-20BK-SC	2 square heads	20W	120V	-	up to 2,017 lm	5CCT (2,700/3,000/3,500/4,000/5,000K)	Black	10-1/4" x 4-7/16" x 7-11/16"

For detailed luminous flux information please refer to Annex 1.

## ORDERING INFORMATION

Model	UPC	Pcs. per carton	Carton size	Carton weight	GTIN 14
ASD-SFL-20WH-SC	810128113465	6	18.5" x 12.6" x 19.1"	16.5 lbs	10810128113462
ASD-SFL-20BK-SC	810128118118	6	18.5" x 12.6" x 19.1"	16.5 lbs	10810128118115

## ANNEX 1

Model	Watts	2,700 K	3,000 K	3,500 K	4,000 K	5,000 K
ASD-SFL-20WH-SC ASD-SFL-20BK-SC	20W	1,784 lm	1,904 lm	1,953 lm	1,982 lm	2,017 lm

For most up-to-date spec sheets please refer to [asd-lighting.com](http://asd-lighting.com)



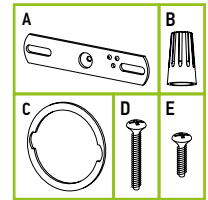
# LED SECURITY FLOODLIGHT WITH MOTION SENSOR AND CAMERA

## PRODUCT SPECIFICATIONS:

Construction & Materials		Optical system	
Housing	Aluminum	Color temperature	5CCT switch (2,700/3,000/3,500/4,000/5,000 K), 5,000 K by default
Lens	PC	CRI	> 80
Finish color	White, Black	Regular and voluntary certifications	
Weight	1.2 lbs (0.5 kg)	5-year limited warranty	
Environmental system		DesignLights Consortium (DLC) listed (Classification: Premium) Main: Outdoor luminaires; General application: Low output; Primary use: Architectural flood and spot luminaires	
Work environment	Suitable for Wet Locations	UL certified E473804	
Operating temperature	-4°F to 113°F (-20°C to 45°C)		
L-70 Life	R > 54,000 hrs; C > 145,000 hrs		
Electrical system			
Input voltage	120 V		
Max input current	0.2 A		
Inrush current (Action time)	70 A (12 S)		
Off state power	0W		
Power consumption	20W		
Power factor	> 0.9		
Output voltage	72 V		
Max output current	0.26 A		
Surge protection DM/CM	2 kv / 2 kv		

## PACKAGE CONTENTS:

Description	Q-ty
LED Security Floodlight with motion sensor and camera	1
Cross bar (A)	1
Wire nut (B)	3
EVA gasket (C)	1
Bracket screw (D)	1
Cross bar screw 3/8" (E)	2
Box	1



## INSTALLATION GUIDE

### IMPORTANT SAFETY INFORMATION:

Please read all the instructions below before installation.

- ▶ Make sure that the supply voltage corresponds to the rated product voltage.
- ▶ The product must be installed by a qualified electrician in accordance with the National Electrical Code and corresponding local codes.
- ▶ If the product is damaged, do not use it.

### ⚠ WARNING

**Risk of personal injury** – read and follow all warnings and installation instructions. Keep or give to the owner for future reference.

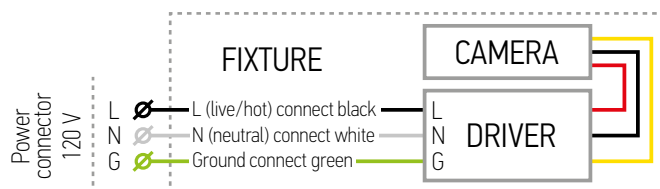
**Risk of cuts:** Wear gloves to prevent cuts or abrasions when removing from carton, handling, installing, and maintaining this product.

**Risk of electric shock:** This product must be installed in accordance with the applicable installation code by a person familiar with the construction and operation of the product and the hazards involved.

**Risk of Fire:** Minimum 194°F supply conductors. Consult a qualified electrician to ensure correct branch circuit conductor.

ASD® assumes no responsibility for claims arising out of improper or careless Installation or handling of this product.

### ELECTRICAL SCHEMATIC DIAGRAM:



## BUILT-IN MOTION SENSOR INFORMATION

Specifications	
Operating voltage	120 V
Detection distance	16.4 - 32.9 ft (5 - 10 m) adjustable
Installation height	9.8 ft (3 m)
Operating mode	On time
Detection range	Horizontal 100°, Vertical 100°

## BUILT-IN SMART CAMERA INFORMATION

Specifications	
Compression standards	H.265 (video); G.711a/PCM/AAC (audio)
Audio compression bitrate	G711a 8 K-16 bit mono
Field of view	110°
Frame rate	50 Hz: 15 fps @ 1296 p (2304 x 1296) (300 K)
Storage function	Micro SD Card (max 128 G)
Wireless standard	2.4 GHz - 2.4835 GHz IEEE 802.11b/g/n
Channel bandwidth	20/40 MHz
Operating temperature and humidity	-10 °C ~ 50 °C, humidity < 95 % (no coagulate)
PIR	16.4 - 32.8 ft (5 - 10 m)
PIR detection distance	19.7 - 39.4 ft (6 - 12 m)

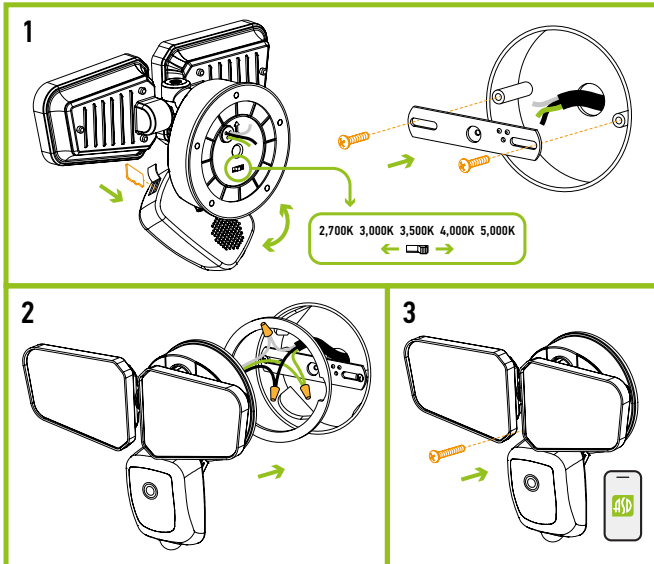
For most up-to-date spec sheets please refer to [asd-lighting.com](http://asd-lighting.com)



# LED SECURITY FLOODLIGHT WITH MOTION SENSOR AND CAMERA

## INSTALLATION STEPS:

1. Attach crossbar to the outlet box using two mounting screws. Remove the cover on the top of the camera. Insert a micro SD card (sold separately) into the slot until a click. Place the cover back on. Change the position of the CCT switch on the housing to the desired color temperature.
2. Tear off the EVA pad adhesive and stick it on the rear cover (pay attention to the direction of the gap). Thread the fixture wire through the gasket. Connect the wires: Black to Black, White to White, and Green to Green. Secure the connection with wire nuts.
3. Drive the bracket screw through the center hole of the fixture base to the crossbar and secure by tightening it.



## STEP-BY-STEP GUIDE FOR ADDING SMART LIGHTS TO THE ASD SMART APP:

1. Download the ASD Smart App from the Apple App Store (for iOS) or from the Google Play Store (for Android) using the QR codes below.

[ASD SMART app download Android](#)

[ASD SMART app download iOS](#)

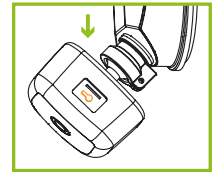


### 2. Prepare the camera:

- Plug the LED Security Floodlight into a power source.
- Insert an SD card into the camera slot.

### 3. Manually put the fixture into pairing mode:

- Find the pairing button on the security camera.
- Press and hold the button for 5 seconds. You should hear a repeating beep, indicating that the device is now in pairing mode.



### 4. Add the SFL-SC to the app:

- Make sure that Bluetooth is enabled on your mobile device and that it's connected to a Wi-Fi network with internet access.
- Open the ASD Smart App.
- At the top of the app, select the area where you want to locate the new fixture.
- Tap the "+" button in the top right corner, then select "Add Device".
- In the "Add Device" menu, find and select the "Camera & Lock" section from the list on the left. Choose "Smart Camera (Wi-Fi)" from the available options.
- Follow the on-screen instructions provided by the app.
- Enter your Wi-Fi network name and password, then tap "Next".
- The ASD Smart App will generate a QR code for you.
- Hold your mobile device with the QR code 6-7 inches away from the camera lens.
- If the camera successfully scans the QR code, you'll hear a notification sound. Tap "I Heard the Prompt" to proceed.
- The app will now start the synchronization process.
- Once synchronization is complete, tap "Done" to finish the setup.
- Congratulations! You have successfully added the SFL-SC to the ASD Smart App.

For most up-to-date spec sheets please refer to [asd-lighting.com](http://asd-lighting.com)