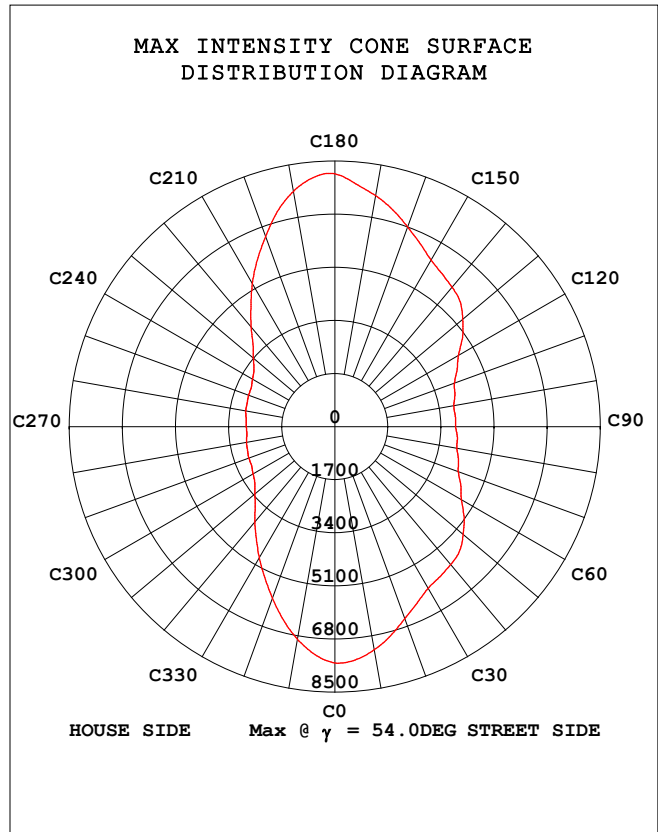
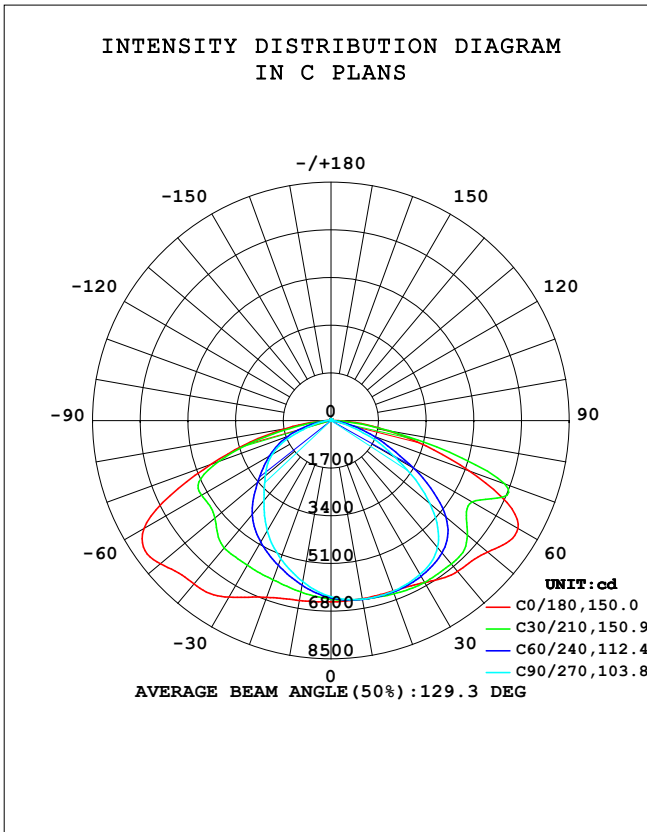


**STREETLIGHT PHOTOMETRIC TEST REPORT**

Test:U:278.61V I:0.5412A P:144.02W PF:0.9552 Freq:49.98Hz Lamp Flux:24436x1 lm		
NAME: ASD-LSB5BHV-PRO-150BR	TYPE:	WEIGHT:
SPEC.: 150W 5000K	DIM.:	SERIAL No.:
MFR.: ASD LIGHTING CORP	SUR.:	Shielding Angle:

DATA OF LAMP		PHOTOMETRIC DATA Eff: 169.67 lm/W			
MODEL	ASD-LSB5BHV-PRO-150BR	I <sub>max</sub> (cd)	8097	η street_up (%)	0.4
NOMINAL POWER (W)	150	LOR (%)	100.0	η street_down (%)	53.5
RATED VOLTAGE (V)	277	TOTAL FLUX (lm)	24436	η house_up (%)	0.6
NOMINAL FLUX (lm)	24436	MAXIMUM @ (C, γ )	180,54.0	η house_down (%)	45.5
LAMPS INSIDE	1	η up (%)	1.0	76 FLASHAREA (m2)	
TEST VOLTAGE (V)	277	η down (%)	99.0	SLI	

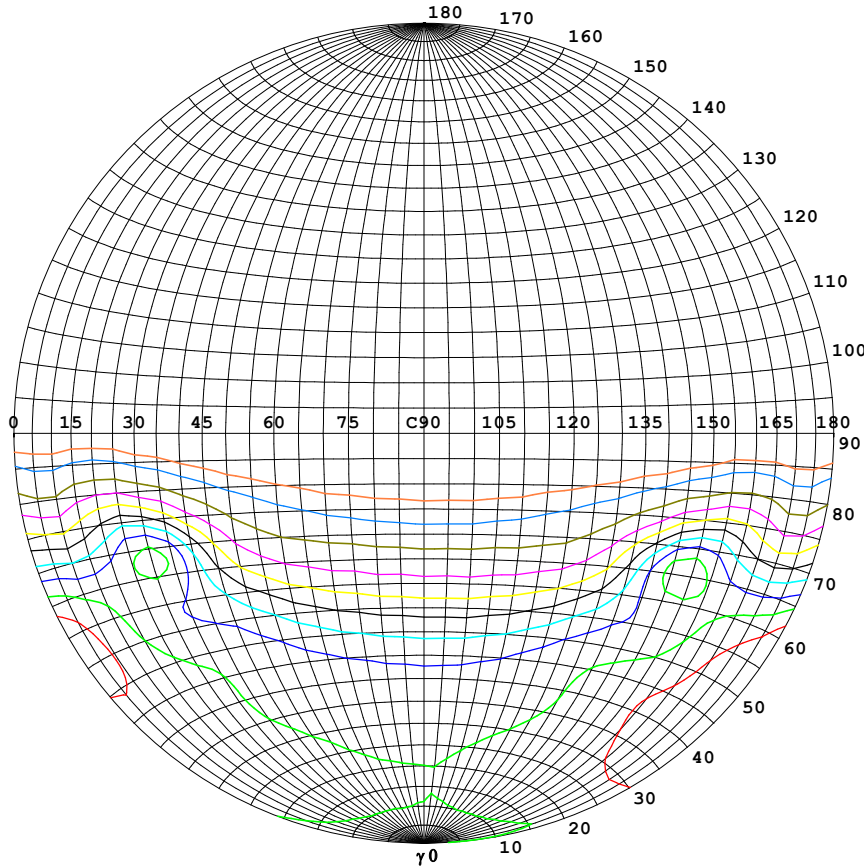


C Range: 0 - 360DEG  
 C Interval: 5.0DEG  
 Test Speed: HIGH  
 Temperature: 25.3DEG  
 Operators: S  
 Test Date: 2024-5-30

γ Range: 0 - 180DEG  
 γ Interval: 1.0DEG  
 Test System: EVERFINE GO-2000B\_V1 SYSTEM V2.00.446  
 Humidity: 65.0%  
 Test Distance: 7.850m [K=1.0000]  
 Remarks:

**STREETLIGHT ISOCANDELA DIAGRAM**

Test:U:278.61V I:0.5412A P:144.02W PF:0.9552 Freq:49.98Hz Lamp Flux:24436x1 lm		
NAME: ASD-LSB5BHV-PRO-150BR	TYPE:	WEIGHT:
SPEC.: 150W 5000K	DIM.:	SERIAL No.:
MFR.: ASD LIGHTING CORP	SUR.:	Shielding Angle:



**Classification:**

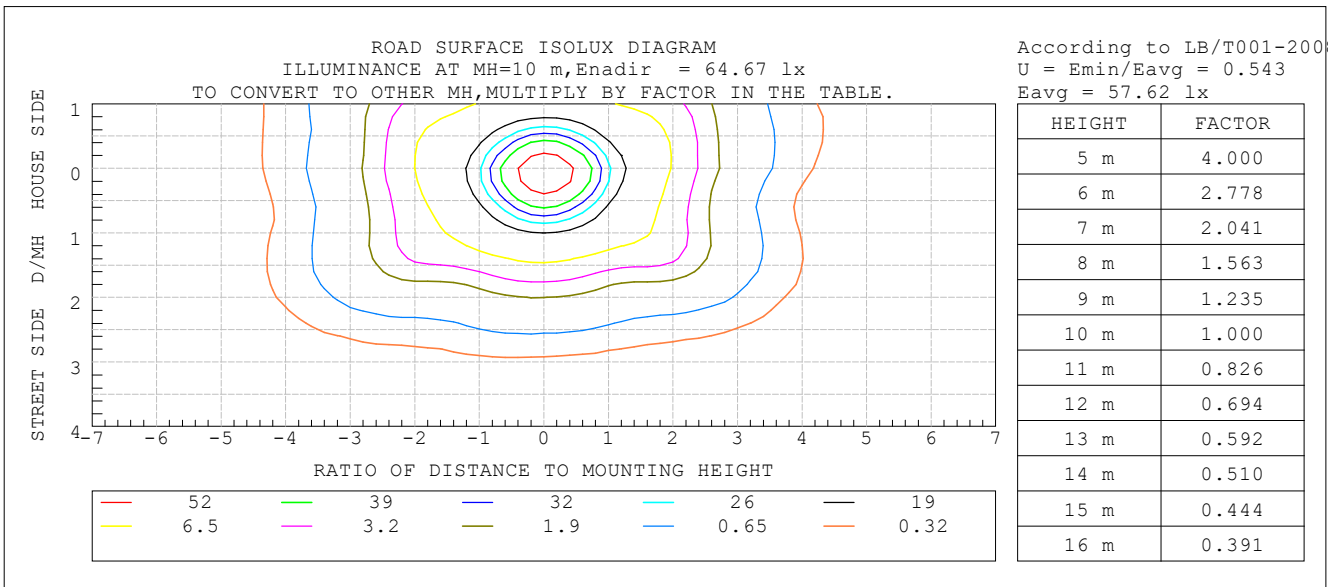
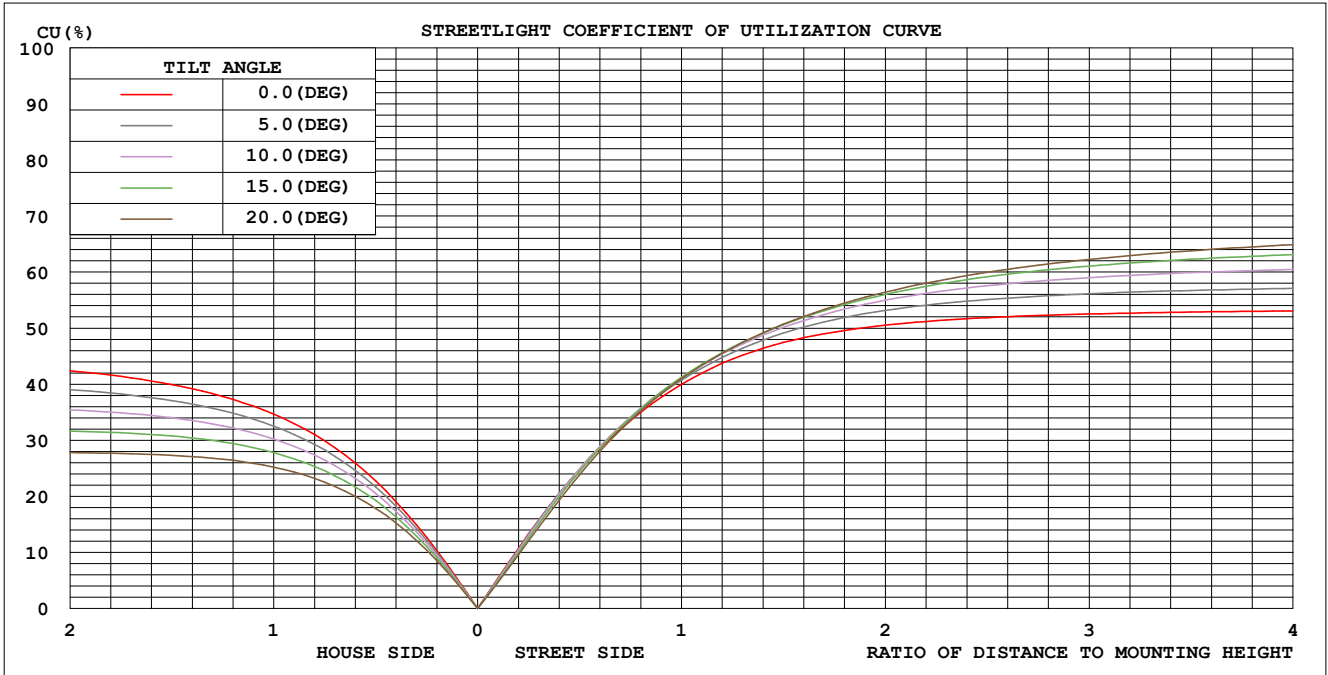
IES:Type III - Short  
 CIE:Narrow - Short  
 IES:Semi cut-off  
 CIE:Non-cut-off  
 Max.At80:101.2cd/klm  
 Max.At90:8.700cd/klm  
 Max.80-90:101.2cd/klm  
 NRB 5101:Semi limited[15.6%]

ISOCANDELA DIAGRAM	
UNIT	cd
I <sub>max</sub> =100%	8097
90%	7287
80%	6477
70%	5668
60%	4858
50%	4048
40%	3239
30%	2429
20%	1619
10%	810
5%	405

C Range: 0 - 360DEG  
 C Interval: 5.0DEG  
 Test Speed: HIGH  
 Temperature:25.3DEG  
 Operators:S  
 Test Date:2024-5-30

γ Range: 0 - 180DEG  
 γ Interval: 1.0DEG  
 Test System:EVERFINE GO-2000B\_V1 SYSTEM V2.00.446  
 Humidity:65.0%  
 Test Distance:7.850m [K=1.0000]  
 Remarks:

**COEFFICIENT OF UTILIZATION CURVE  
AND ISOLUX DIAGRAM**



C Range: 0 - 360DEG  
 C Interval: 5.0DEG  
 Test Speed: HIGH  
 Temperature: 25.3DEG  
 Operators: S  
 Test Date: 2024-5-30

$\gamma$  Range: 0 - 180DEG  
 $\gamma$  Interval: 1.0DEG  
 Test System: EVERFINE GO-2000B\_V1 SYSTEM V2.00.446  
 Humidity: 65.0%  
 Test Distance: 7.850m [K=1.0000]  
 Remarks:

ZONAL FLUX DIAGRAM

Test:U:278.61V I:0.5412A P:144.02W PF:0.9552 Freq:49.98Hz Lamp Flux:24436x1 lm		
NAME: ASD-LSB5BHV-PRO-150BR	TYPE:	WEIGHT:
SPEC.: 150W 5000K	DIM.:	SERIAL No.:
MFR.: ASD LIGHTING CORP	SUR.:	Shielding Angle:

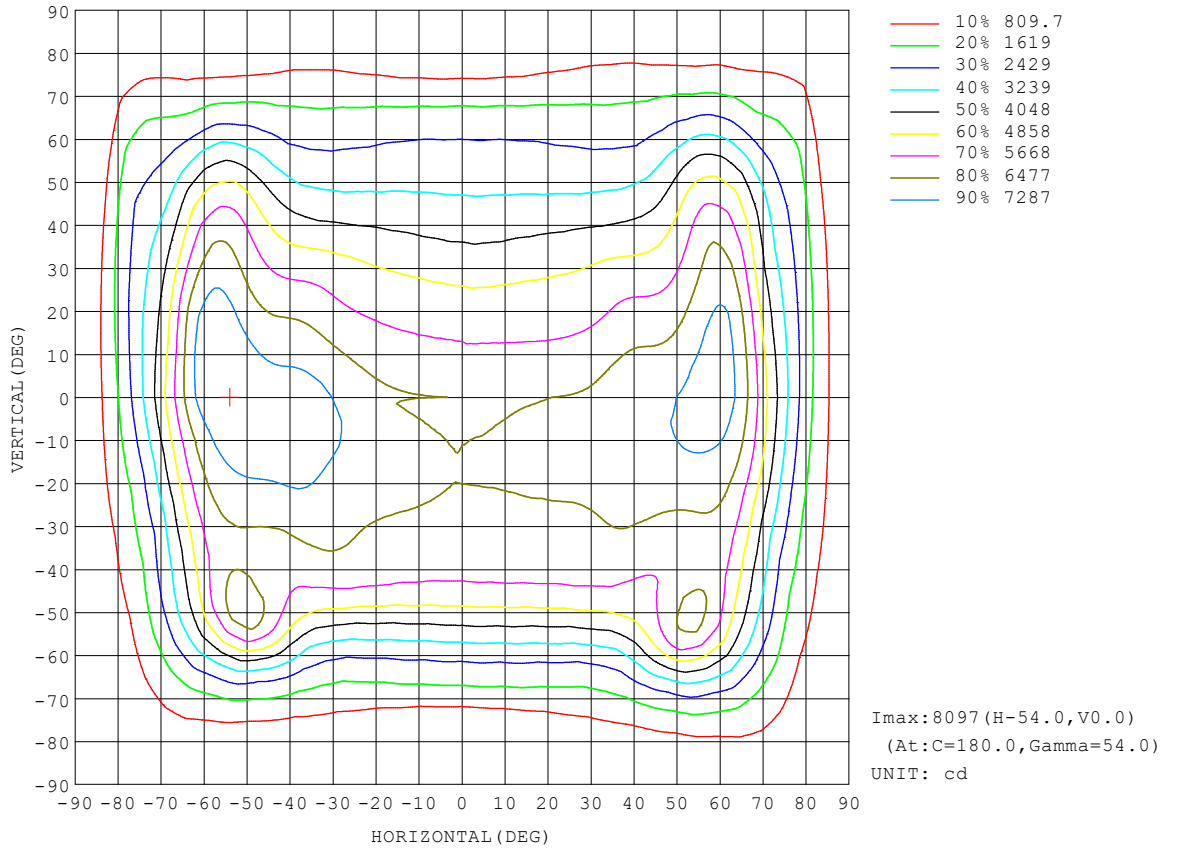
γ	C0	C45	C90	C135	C180	C225	C270	C315	γ	Φ zone	Φ total	%lum,lamp
10	6452	6477	6468	6476	6513	6068	5837	5961	0- 10	599.8	599.8	2.45,2.45
20	6471	6544	6478	6684	6710	5733	5246	5576	10- 20	1758	2358	9.65,9.65
30	6671	6515	6343	6691	7270	5409	4548	5183	20- 30	2830	5188	21.2,21.2
40	7029	6321	5909	6588	7606	5044	3728	4777	30- 40	3757	8945	36.6,36.6
50	7297	6007	4602	6117	7946	4147	3063	4012	40- 50	4351	13296	54.4,54.4
60	7699	4877	2663	4966	7704	3101	2425	3023	50- 60	4406	17702	72.4,72.4
70	5223	3187	1094	3047	4532	2099	1279	2109	60- 70	3890	21592	88.4,88.4
80	1992	968.0	192.3	703.0	1598	720.9	429.2	935.0	70- 80	2139	23732	97.1,97.1
90	65.81	10.04	5.280	10.50	24.67	27.38	10.67	28.28	80- 90	463.2	24195	99,99
100	30.26	16.29	10.15	17.77	38.44	27.19	14.87	25.64	90-100	20.91	24216	99.1,99.1
110	43.59	25.32	16.60	26.36	50.37	37.32	24.82	35.98	100-110	28.83	24245	99.2,99.2
120	52.28	33.85	23.83	33.91	56.87	46.39	36.20	45.98	110-120	36.47	24281	99.4,99.4
130	54.85	40.66	30.72	38.06	58.15	51.16	46.20	54.24	120-130	39.59	24321	99.5,99.5
140	53.92	44.75	36.60	40.41	57.14	53.50	52.55	57.88	130-140	37.39	24358	99.7,99.7
150	54.39	48.37	42.27	43.66	57.81	55.45	55.24	58.99	140-150	31.89	24390	99.8,99.8
160	57.16	52.75	47.76	47.98	59.66	56.93	57.15	59.81	150-160	24.61	24414	99.9,99.9
170	61.12	57.02	53.30	53.45	62.37	58.48	58.13	59.47	160-170	15.91	24430	100,100
180	63.70	59.29	57.41	58.24	63.90	59.23	57.47	58.25	170-180	5.574	24436	100,100
DEG	LUMINOUS INTENSITY:cd									UNIT:lm		

C Range: 0 - 360DEG  
 C Interval: 5.0DEG  
 Test Speed: HIGH  
 Temperature:25.3DEG  
 Operators:S  
 Test Date:2024-5-30

γ Range: 0 - 180DEG  
 γ Interval: 1.0DEG  
 Test System:EVERFINE GO-2000B\_V1 SYSTEM V2.00.446  
 Humidity:65.0%  
 Test Distance:7.850m [K=1.0000]  
 Remarks:

**ISOCANDELA DIAGRAM**

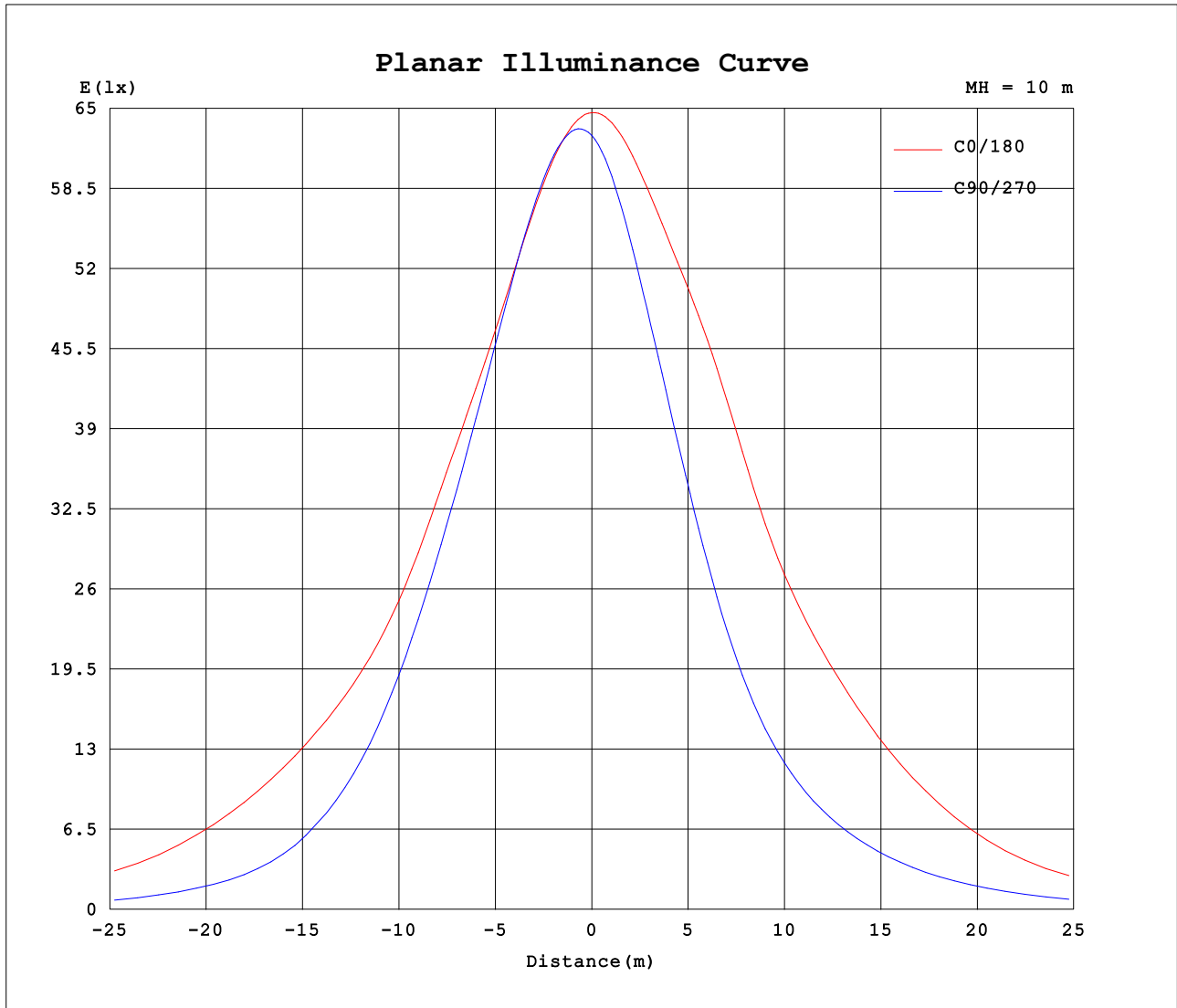
Test:U:278.61V I:0.5412A P:144.02W PF:0.9552 Freq:49.98Hz Lamp Flux:24436x1 lm		
NAME: ASD-LSB5BHV-PRO-150BR	TYPE:	WEIGHT:
SPEC.: 150W 5000K	DIM.:	SERIAL No.:
MFR.: ASD LIGHTING CORP	SUR.:	Shielding Angle:



C Range: 0 - 360DEG  
 C Interval: 5.0DEG  
 Test Speed: HIGH  
 Temperature:25.3DEG  
 Operators:S  
 Test Date:2024-5-30

γ Range: 0 - 180DEG  
 γ Interval: 1.0DEG  
 Test System:EVERFINE GO-2000B\_V1 SYSTEM V2.00.446  
 Humidity:65.0%  
 Test Distance:7.850m [K=1.0000]  
 Remarks:

**Planar Illuminance Curve**



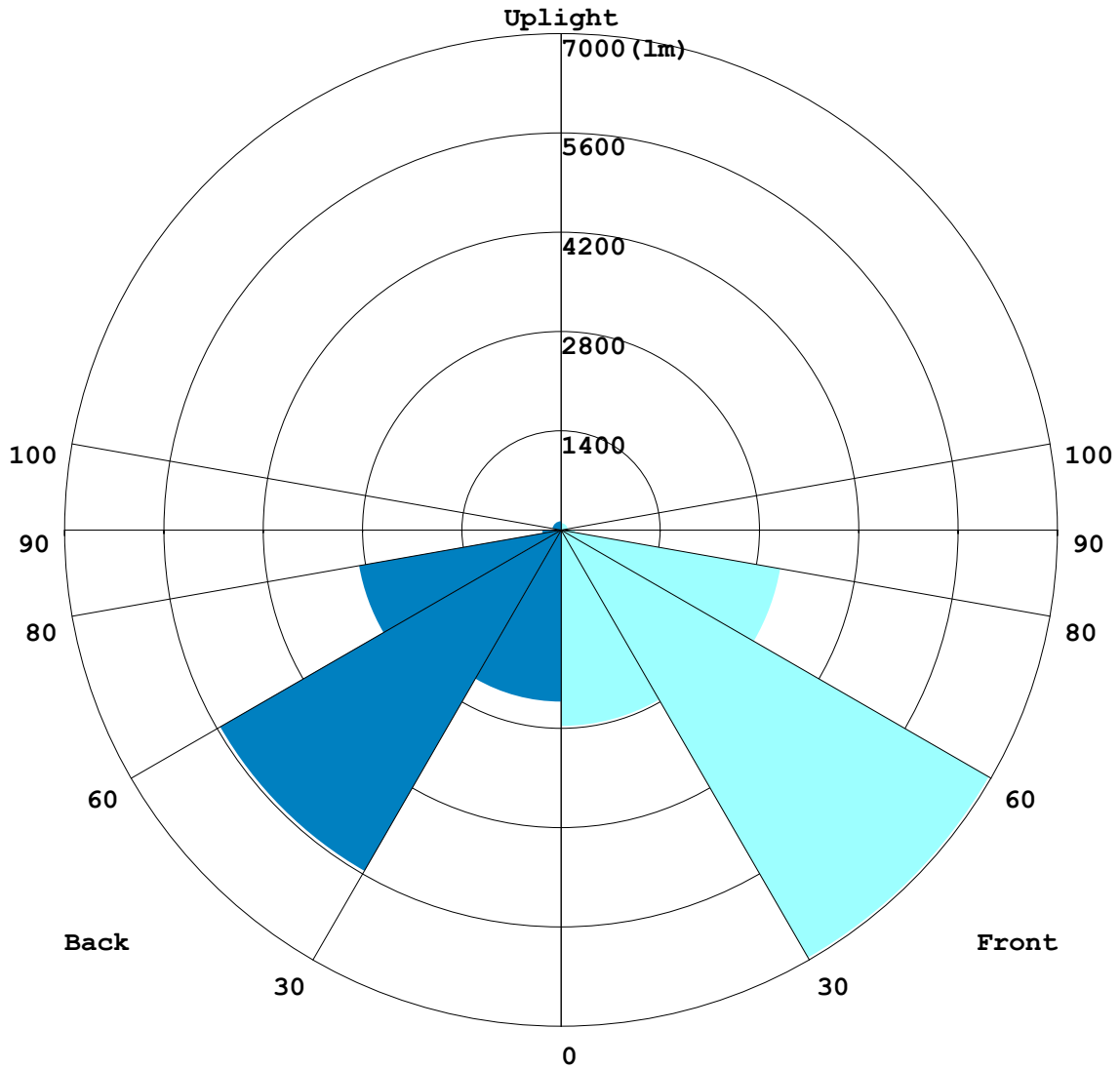
C Range: 0 - 360DEG  
 C Interval: 5.0DEG  
 Test Speed: HIGH  
 Temperature: 25.3DEG  
 Operators: S  
 Test Date: 2024-5-30

$\gamma$  Range: 0 - 180DEG  
 $\gamma$  Interval: 1.0DEG  
 Test System: EVERFINE GO-2000B\_V1 SYSTEM V2.00.446  
 Humidity: 65.0%  
 Test Distance: 7.850m [K=1.0000]  
 Remarks:

**LCS REPORT**

Test:U:278.61V I:0.5412A P:144.02W PF:0.9552 Freq:49.98Hz Lamp Flux:24436x1 lm		
NAME: ASD-LSB5BHV-PRO-150BR	TYPE:	WEIGHT:
SPEC.: 150W 5000K	DIM.:	SERIAL No.:
MFR.: ASD LIGHTING CORP	SUR.:	Shielding Angle:

**LUMINAIRE CLASSIFICATION SYSTEM(LCS) GRAPH**



C Range: 0 - 360DEG  
 C Interval: 5.0DEG  
 Test Speed: HIGH  
 Temperature:25.3DEG  
 Operators:S  
 Test Date:2024-5-30

γ Range: 0 - 180DEG  
 γ Interval: 1.0DEG  
 Test System:EVERFINE GO-2000B\_V1 SYSTEM V2.00.446  
 Humidity:65.0%  
 Test Distance:7.850m [K=1.0000]  
 Remarks:

**BUG REPORT**

Test:U:278.61V I:0.5412A P:144.02W PF:0.9552 Freq:49.98Hz Lamp Flux:24436x1 lm		
NAME: ASD-LSB5BHV-PRO-150BR	TYPE:	WEIGHT:
SPEC.: 150W 5000K	DIM.:	SERIAL No.:
MFR.: ASD LIGHTING CORP	SUR.:	Shielding Angle:

**IESNA Luminaire Flux Distribution Table:**

Zone	Lumens	Luminaire %
FL - Front-Low(0-30)	2766.6	11.3
FM - Front-Medium(30-60)	6962.8	28.5
FH - Front-High(60-80)	3136.8	12.8
FVH - Front-Very High(80-90)	198.95	0.8
<b>Total Forward Light</b>	<b>13170</b>	<b>53.9</b>

BL - Back-Low(0-30)	2421.4	9.9
BM - Back-Medium(30-60)	5551.5	22.7
BH - Back-High(60-80)	2892.5	11.8
BVH - Back-Very High(80-90)	264.28	1.1
<b>Total Back Light</b>	<b>11266</b>	<b>46.1</b>

UL - Uplight-Low(90-100)	20.912	0.1
UH - Uplight-High(100-180)	220.27	0.9
<b>Total Up Light</b>	<b>241.18</b>	<b>1.0</b>

<b>BUG(Back,Up,Glare) Rating</b>	<b>B4-U3-G4</b>
----------------------------------	-----------------

Zone	Downward Lumens	Upward Lumens	Total Lumens
House Side	11130	136.22	11266
Street Side	13065	104.96	13170

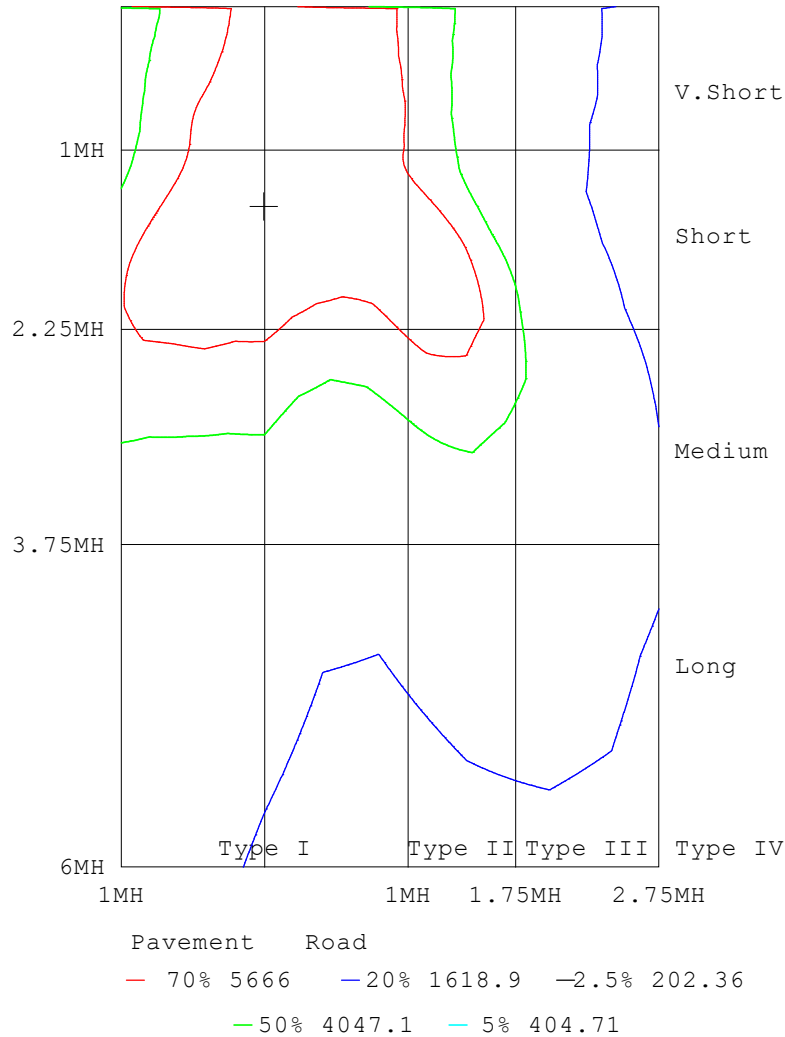
C Range: 0 - 360DEG  
 C Interval: 5.0DEG  
 Test Speed: HIGH  
 Temperature:25.3DEG  
 Operators:S  
 Test Date:2024-5-30

γ Range: 0 - 180DEG  
 γ Interval: 1.0DEG  
 Test System:EVERFINE GO-2000B\_V1 SYSTEM V2.00.446  
 Humidity:65.0%  
 Test Distance:7.850m [K=1.0000]  
 Remarks:

**ROAD ISOCANDELA REPORT**

Test:U:278.61V I:0.5412A P:144.02W PF:0.9552 Freq:49.98Hz Lamp Flux:24436x1 lm		
NAME: ASD-LSB5BHV-PRO-150BR	TYPE:	WEIGHT:
SPEC.: 150W 5000K	DIM.:	SERIAL No.:
MFR.: ASD LIGHTING CORP	SUR.:	Shielding Angle:

ROAD SURFACE ISOCANDELA DIAGRAM



C Range: 0 - 360DEG  
C Interval: 5.0DEG  
Test Speed: HIGH  
Temperature:25.3DEG  
Operators:S  
Test Date:2024-5-30

γ Range: 0 - 180DEG  
γ Interval: 1.0DEG  
Test System:EVERFINE GO-2000B\_V1 SYSTEM V2.00.446  
Humidity:65.0%  
Test Distance:7.850m [K=1.0000]  
Remarks:

LUMINOUS DISTRIBUTION INTENSITY DATA

Test:U:278.61V I:0.5412A P:144.02W PF:0.9552 Freq:49.98Hz Lamp Flux:24436x1 lm		
NAME: ASD-LSB5BHV-PRO-150BR	TYPE:	WEIGHT:
SPEC.: 150W 5000K	DIM.:	SERIAL No.:
MFR.: ASD LIGHTING CORP	SUR.:	Shielding Angle:

Table--1

UNIT: cd

C (DEG) \ γ (DEG)	0	5	10	15	20	25	30	35	40	45	50	55	60	65	70	75	80	85	90
0	6467	6441	6421	6405	6390	6378	6370	6360	6354	6343	6339	6328	6325	6314	6314	6303	6301	6287	6281
5	6456	6444	6435	6429	6427	6425	6426	6425	6426	6424	6425	6422	6423	6420	6422	6417	6416	6407	6402
10	6452	6451	6454	6458	6461	6465	6469	6473	6476	6477	6478	6478	6477	6477	6479	6478	6477	6471	6468
15	6453	6467	6482	6495	6505	6512	6517	6518	6518	6515	6511	6507	6503	6502	6501	6500	6497	6495	6492
20	6471	6504	6534	6554	6569	6573	6573	6567	6556	6544	6530	6519	6505	6498	6491	6488	6483	6480	6478
25	6532	6587	6630	6651	6661	6650	6633	6609	6580	6552	6524	6502	6480	6467	6453	6447	6437	6434	6428
30	6671	6739	6789	6789	6772	6723	6669	6615	6558	6515	6471	6445	6417	6405	6388	6380	6364	6357	6343
35	6879	6948	6974	6941	6874	6775	6668	6572	6484	6425	6372	6344	6316	6303	6280	6265	6235	6224	6198
40	7029	7098	7117	7069	6972	6828	6675	6528	6404	6321	6252	6212	6160	6125	6067	6032	5967	5948	5909
45	7096	7181	7188	7118	6986	6828	6648	6492	6343	6228	6112	6013	5881	5783	5655	5583	5471	5447	5388
50	7297	7335	7239	7040	6782	6558	6350	6231	6106	6007	5816	5615	5347	5161	4945	4839	4703	4671	4602
55	7629	7522	7241	6883	6486	6157	5896	5783	5677	5535	5213	4872	4485	4251	4017	3912	3782	3752	3679
60	7699	7414	7006	6628	6256	5982	5813	5657	5365	4877	4281	3843	3426	3184	2972	2883	2756	2727	2663
65	6929	6643	6298	6142	6139	6348	6539	6194	5193	4077	3193	2721	2390	2253	2126	2079	1989	1965	1912
70	5223	5093	4848	5011	5455	6235	6583	5944	4452	3187	2314	1886	1623	1519	1383	1302	1168	1120	1094
75	3512	3261	3111	3567	4128	4626	4390	3729	2687	2040	1490	1184	967	831	700	640	574	558	526
80	1992	1717	1702	2164	2400	2439	2088	1770	1287	968	699	555	424	356	281	262	221	219	192
85	879	703	687	883	964	875	657	532	340	250	143	105	77.1	49.9	30.6	23.7	16.3	13.2	9.40
90	65.8	46.7	69.9	47.9	86.5	29.8	17.0	15.1	12.5	10.0	8.19	6.94	6.38	5.90	5.65	5.40	5.34	5.18	5.28
95	23.5	22.7	22.2	21.2	20.3	18.9	17.6	15.7	14.1	12.2	10.9	9.62	8.85	8.18	7.86	7.57	7.50	7.38	7.47
100	30.3	29.1	28.3	26.9	25.8	24.1	22.5	20.4	18.5	16.3	14.7	13.1	12.0	11.1	10.7	10.3	10.2	10.0	10.1
105	37.2	35.8	34.7	32.9	31.5	29.5	27.7	25.3	23.1	20.7	18.9	16.9	15.7	14.5	14.0	13.4	13.3	13.1	13.2
110	43.6	42.1	40.5	38.5	36.7	34.5	32.5	30.1	27.9	25.3	23.3	21.1	19.6	18.2	17.5	16.8	16.7	16.5	16.6
115	48.7	47.1	45.4	43.3	41.5	39.4	37.3	34.8	32.4	29.8	27.6	25.3	23.6	22.1	21.2	20.4	20.3	20.1	20.2
120	52.3	50.8	49.2	47.4	45.8	43.7	41.5	38.9	36.5	33.9	31.6	29.3	27.6	25.9	25.0	24.2	24.1	23.8	23.8
125	54.4	53.1	51.8	50.3	48.7	46.8	44.7	42.3	40.0	37.5	35.4	33.1	31.3	29.7	28.8	28.1	27.9	27.5	27.4
130	54.8	53.9	52.8	51.8	50.5	48.9	47.2	45.1	43.0	40.7	38.5	36.3	34.5	33.1	32.2	31.6	31.2	30.8	30.7
135	54.5	53.9	53.3	52.7	51.8	50.5	49.0	47.2	45.2	43.0	40.9	38.9	37.4	36.1	35.4	34.8	34.3	33.9	33.8
140	53.9	53.9	53.8	53.5	52.8	51.7	50.2	48.5	46.6	44.7	43.0	41.3	40.1	39.1	38.4	37.6	37.1	36.7	36.6
145	53.9	54.3	54.3	54.1	53.3	52.3	50.9	49.5	48.0	46.5	45.1	43.8	42.8	41.9	41.2	40.5	40.0	39.6	39.4
150	54.4	54.7	54.7	54.5	53.8	52.9	51.9	50.8	49.6	48.4	47.4	46.3	45.5	44.6	44.0	43.4	42.9	42.5	42.3
155	55.4	55.7	55.6	55.2	54.6	54.0	53.3	52.4	51.4	50.4	49.7	48.8	48.0	47.3	46.8	46.1	45.6	45.1	44.9
160	57.2	57.4	57.2	56.8	56.4	55.9	55.3	54.4	53.5	52.7	52.1	51.3	50.8	50.1	49.6	48.9	48.5	48.0	47.8
165	59.2	59.4	59.1	58.9	58.4	57.8	57.2	56.5	55.7	55.0	54.5	54.0	53.5	53.0	52.6	52.0	51.5	51.2	50.9
170	61.1	61.2	60.9	60.5	60.0	59.4	58.8	58.2	57.6	57.0	56.6	56.0	55.5	55.1	54.7	54.2	53.8	53.6	53.3
175	63.2	63.0	62.4	61.8	61.0	60.4	59.8	59.3	58.9	58.3	57.8	57.5	57.1	56.8	56.4	56.1	55.8	55.6	55.4
180	63.7	63.4	62.4	61.9	61.3	61.0	60.5	60.2	59.8	59.3	58.8	58.6	58.4	58.2	58.0	57.8	57.5	57.6	57.4

C Range: 0 - 360DEG  
 C Interval: 5.0DEG  
 Test Speed: HIGH  
 Temperature:25.3DEG  
 Operators:S  
 Test Date:2024-5-30

γ Range: 0 - 180DEG  
 γ Interval: 1.0DEG  
 Test System:EVERFINE GO-2000B\_V1 SYSTEM V2.00.446  
 Humidity:65.0%  
 Test Distance:7.850m [K=1.0000]  
 Remarks:

LUMINOUS DISTRIBUTION INTENSITY DATA

Test:U:278.61V I:0.5412A P:144.02W PF:0.9552 Freq:49.98Hz Lamp Flux:24436x1 lm		
NAME: ASD-LSB5BHV-PRO-150BR	TYPE:	WEIGHT:
SPEC.: 150W 5000K	DIM.:	SERIAL No.:
MFR.: ASD LIGHTING CORP	SUR.:	Shielding Angle:

Table--2

UNIT: cd

C (DEG) γ (DEG)	95	100	105	110	115	120	125	130	135	140	145	150	155	160	165	170	175	180	185
0	6253	6257	6254	6260	6256	6263	6259	6264	6263	6269	6269	6274	6273	6278	6276	6279	6278	6467	6441
5	6378	6381	6379	6384	6381	6385	6380	6381	6374	6374	6367	6364	6355	6348	6336	6327	6312	6483	6445
10	6452	6457	6461	6470	6473	6479	6477	6480	6476	6476	6468	6462	6446	6435	6413	6393	6364	6513	6457
15	6484	6494	6505	6522	6536	6552	6562	6576	6585	6593	6592	6594	6579	6567	6538	6510	6464	6575	6503
20	6476	6489	6509	6532	6560	6589	6620	6653	6684	6717	6740	6767	6770	6774	6747	6720	6658	6710	6619
25	6430	6442	6465	6493	6529	6567	6616	6667	6730	6797	6865	6936	6987	7036	7042	7039	6973	6950	6832
30	6348	6356	6379	6404	6442	6481	6539	6603	6691	6788	6903	7028	7145	7261	7332	7381	7346	7270	7128
35	6205	6212	6246	6274	6324	6370	6436	6512	6619	6748	6907	7089	7258	7419	7525	7585	7574	7530	7382
40	5921	5938	6005	6068	6166	6250	6352	6458	6588	6748	6940	7143	7332	7491	7598	7645	7616	7606	7442
45	5415	5435	5545	5644	5828	5986	6184	6340	6502	6637	6806	6966	7172	7363	7554	7679	7697	7691	7480
50	4620	4631	4758	4860	5119	5356	5692	5924	6117	6192	6327	6485	6770	7074	7406	7680	7845	7946	7746
55	3685	3677	3785	3860	4106	4354	4779	5165	5558	5776	5939	6124	6411	6742	7110	7435	7742	8094	8038
60	2672	2666	2755	2809	2998	3210	3654	4171	4966	5751	6207	6361	6341	6381	6560	6780	7099	7704	7812
65	1921	1910	1968	1991	2095	2219	2572	3124	4226	5681	6840	6957	6379	5779	5533	5524	5767	6329	6456
70	1080	1093	1184	1237	1362	1467	1737	2190	3047	4128	5388	5856	5495	4642	4042	3787	3998	4532	4485
75	539	538	586	627	734	839	1039	1282	1706	2148	2840	3254	3527	3301	2797	2252	2378	2977	3251
80	208	200	226	239	292	331	420	513	703	888	1187	1392	1645	1689	1520	1156	1187	1598	2095
85	13.5	16.4	22.4	26.7	34.7	38.5	51.6	76.2	106	142	256	318	492	508	469	351	356	537	825
90	5.25	5.56	5.75	6.34	6.43	7.17	7.89	9.16	10.5	12.0	13.8	15.1	16.3	18.2	18.5	20.2	19.2	24.7	27.1
95	7.46	7.73	7.97	8.54	8.78	9.69	10.7	12.3	13.8	15.7	17.5	19.4	20.9	22.7	23.4	24.2	24.4	31.5	32.0
100	10.1	10.4	10.7	11.4	11.7	12.9	14.1	16.0	17.8	20.0	22.1	24.2	25.9	27.9	29.0	30.0	30.6	38.4	39.0
105	13.2	13.5	13.8	14.6	15.1	16.5	17.9	20.1	22.0	24.5	26.8	29.0	30.9	33.0	34.4	35.9	36.7	45.0	45.6
110	16.5	16.9	17.2	18.1	18.7	20.3	21.9	24.2	26.4	29.0	31.3	33.6	35.5	37.8	39.4	40.9	42.1	50.4	50.9
115	20.0	20.4	20.7	21.7	22.4	24.1	25.8	28.2	30.4	33.0	35.4	37.7	39.7	42.1	43.6	45.1	46.5	54.3	55.0
120	23.7	24.1	24.4	25.2	26.0	27.6	29.4	31.7	33.9	36.2	38.6	40.8	42.9	45.3	47.0	48.5	49.8	56.9	57.6
125	27.3	27.7	27.9	28.7	29.2	30.7	32.4	34.5	36.5	38.7	40.7	42.7	44.8	47.2	48.7	50.3	51.7	58.1	58.7
130	30.6	30.9	31.2	31.8	32.2	33.4	34.6	36.4	38.1	39.9	41.9	43.7	45.5	47.9	49.3	50.6	51.8	58.1	58.6
135	33.6	33.8	34.1	34.8	35.0	35.9	36.7	38.0	39.2	40.6	42.1	43.8	45.7	47.7	48.9	50.1	51.2	57.6	57.7
140	36.4	36.6	36.7	37.4	37.6	38.2	38.7	39.6	40.4	41.4	42.6	43.9	45.5	47.2	48.3	49.4	50.4	57.1	56.9
145	39.3	39.3	39.3	39.7	39.9	40.4	40.7	41.4	41.9	42.7	43.8	44.8	45.8	47.1	48.2	49.7	50.3	57.3	56.7
150	42.0	41.9	41.8	42.0	42.0	42.4	42.8	43.2	43.7	44.3	45.1	46.0	47.0	47.7	48.7	49.5	50.2	57.8	57.1
155	44.5	44.4	44.1	44.2	44.2	44.5	44.7	45.2	45.6	46.2	46.6	47.3	48.0	49.0	49.6	50.5	51.3	58.6	57.9
160	47.4	47.3	47.0	47.1	47.0	47.2	47.4	47.8	48.0	48.5	48.9	49.5	50.1	50.9	51.5	52.3	53.2	59.7	59.0
165	50.6	50.5	50.3	50.3	50.2	50.4	50.4	50.7	50.8	51.3	51.6	52.2	52.6	53.2	53.7	54.4	55.3	60.9	60.1
170	53.0	53.0	52.9	53.0	52.8	52.9	53.0	53.3	53.4	53.8	54.2	54.7	55.0	55.5	55.9	56.6	57.5	62.4	61.5
175	55.3	55.3	55.3	55.5	55.3	55.4	55.5	55.7	55.9	56.2	56.7	57.0	57.5	58.4	58.7	60.3	60.4	63.8	62.9
180	57.5	57.5	57.6	57.8	57.7	57.8	57.9	58.1	58.2	58.4	58.9	59.2	59.6	60.3	60.6	62.0	62.1	63.9	63.2

C Range: 0 - 360DEG  
 C Interval: 5.0DEG  
 Test Speed: HIGH  
 Temperature:25.3DEG  
 Operators:S  
 Test Date:2024-5-30

γ Range: 0 - 180DEG  
 γ Interval: 1.0DEG  
 Test System:EVERFINE GO-2000B\_V1 SYSTEM V2.00.446  
 Humidity:65.0%  
 Test Distance:7.850m [K=1.0000]  
 Remarks:

LUMINOUS DISTRIBUTION INTENSITY DATA

Test:U:278.61V I:0.5412A P:144.02W PF:0.9552 Freq:49.98Hz Lamp Flux:24436x1 lm		
NAME: ASD-LSB5BHV-PRO-150BR	TYPE:	WEIGHT:
SPEC.: 150W 5000K	DIM.:	SERIAL No.:
MFR.: ASD LIGHTING CORP	SUR.:	Shielding Angle:

Table--3

UNIT: cd

C (DEG) γ (DEG)	190	195	200	205	210	215	220	225	230	235	240	245	250	255	260	265	270	275	280
0	6421	6405	6390	6378	6370	6360	6354	6343	6339	6328	6325	6314	6314	6303	6301	6287	6281	6253	6257
5	6410	6378	6349	6319	6297	6269	6250	6225	6207	6183	6170	6148	6140	6121	6115	6095	6092	6058	6068
10	6405	6352	6303	6252	6208	6158	6118	6068	6036	5989	5962	5924	5906	5875	5866	5839	5837	5803	5817
15	6424	6348	6269	6192	6117	6040	5972	5900	5841	5777	5731	5674	5648	5604	5584	5553	5547	5517	5535
20	6507	6396	6277	6160	6047	5934	5834	5733	5648	5562	5496	5423	5378	5320	5290	5253	5246	5214	5236
25	6675	6515	6338	6168	6003	5845	5704	5573	5463	5352	5264	5170	5105	5028	4981	4930	4920	4886	4917
30	6914	6685	6434	6193	5965	5755	5574	5409	5269	5129	5016	4893	4803	4701	4636	4567	4548	4514	4557
35	7147	6868	6548	6237	5947	5681	5452	5240	5061	4879	4730	4569	4451	4322	4242	4159	4139	4106	4157
40	7220	6934	6608	6259	5931	5613	5326	5044	4802	4563	4375	4179	4051	3912	3830	3749	3728	3703	3755
45	7174	6820	6454	6067	5725	5363	5034	4677	4393	4107	3916	3725	3618	3505	3445	3380	3369	3350	3394
50	7343	6862	6350	5864	5413	4955	4558	4147	3847	3572	3414	3275	3218	3153	3123	3073	3063	3052	3092
55	7726	7208	6548	5923	5283	4636	4086	3604	3308	3069	2966	2883	2879	2849	2843	2792	2782	2772	2824
60	7752	7381	6834	6150	5333	4438	3660	3101	2816	2616	2551	2482	2491	2464	2465	2424	2425	2407	2460
65	6684	6524	6381	5944	5202	4133	3232	2624	2344	2173	2111	2036	2022	1973	1973	1936	1954	1927	1979
70	4658	4804	5064	4830	4260	3338	2615	2099	1862	1700	1637	1536	1478	1368	1329	1261	1279	1260	1347
75	3328	3238	3281	3070	2731	2152	1773	1467	1333	1202	1103	977	889	785	753	713	729	717	771
80	2474	2230	1838	1464	1234	987	825	721	714	647	602	503	470	432	428	414	429	421	446
85	1221	1012	684	436	366	274	244	201	218	195	209	187	193	177	183	174	189	186	212
90	29.8	32.0	33.0	32.8	32.7	31.3	30.6	27.4	25.5	22.5	19.3	15.9	13.4	11.7	10.5	9.34	10.7	10.9	17.5
95	31.6	31.2	30.0	29.0	27.4	26.0	24.3	22.6	20.6	18.6	16.4	14.8	13.2	12.4	11.7	11.4	11.1	11.2	11.2
100	38.4	37.7	35.9	34.4	32.4	30.8	28.9	27.2	25.1	23.2	20.9	19.2	17.4	16.5	15.5	15.3	14.9	14.9	14.9
105	45.0	44.0	42.1	40.2	37.8	36.0	34.0	32.3	30.3	28.5	26.2	24.5	22.6	21.4	20.4	20.0	19.5	19.6	19.7
110	50.5	49.5	47.5	45.4	42.9	40.8	38.8	37.3	35.5	33.8	31.7	30.0	28.1	26.9	25.7	25.3	24.8	24.9	25.0
115	54.8	53.9	52.1	50.2	47.8	45.8	43.7	42.2	40.4	38.9	37.0	35.4	33.6	32.4	31.3	31.0	30.5	30.6	30.7
120	57.6	57.0	55.6	54.0	51.9	50.0	48.0	46.4	44.7	43.3	41.6	40.3	38.7	37.8	37.0	36.6	36.2	36.3	36.4
125	59.0	58.6	57.6	56.2	54.5	52.7	51.0	49.5	48.1	46.8	45.3	44.4	43.3	42.9	42.2	41.9	41.5	41.7	41.8
130	59.1	59.0	58.4	57.2	55.7	54.0	52.5	51.2	50.0	49.0	48.2	47.8	47.3	47.2	46.6	46.5	46.2	46.4	46.5
135	58.1	58.1	57.9	57.1	55.9	54.6	53.3	52.2	51.3	50.9	50.5	50.5	50.5	50.4	50.1	50.0	49.9	50.0	50.2
140	56.9	56.7	56.6	56.3	55.8	55.0	54.2	53.5	52.9	52.7	52.5	52.7	52.6	52.6	52.5	52.6	52.5	52.7	52.9
145	56.4	56.0	55.8	55.7	55.5	55.3	55.0	54.6	54.3	54.1	54.0	54.0	53.9	53.9	54.0	54.2	54.3	54.5	54.7
150	56.8	56.4	56.2	56.0	55.9	55.7	55.6	55.5	55.4	55.3	55.1	55.0	54.9	54.9	55.0	55.1	55.2	55.4	55.8
155	57.6	57.3	57.1	56.9	56.7	56.6	56.5	56.4	56.3	56.1	55.9	55.9	55.9	56.0	56.0	56.1	56.2	56.3	56.6
160	58.6	58.3	58.1	57.8	57.6	57.3	57.1	56.9	56.9	56.7	56.7	56.7	56.8	56.9	57.0	57.0	57.1	57.2	57.4
165	59.6	59.2	59.0	58.7	58.4	58.1	57.8	57.6	57.5	57.3	57.3	57.3	57.4	57.5	57.6	57.6	57.8	57.8	58.0
170	60.8	60.3	60.0	59.7	59.4	59.0	58.7	58.5	58.2	58.0	58.0	57.9	58.0	57.9	58.0	58.0	58.1	58.2	58.3
175	62.1	61.3	60.9	60.5	60.2	59.8	59.5	59.1	58.7	58.5	58.4	58.3	58.2	58.0	58.0	57.9	58.0	58.0	58.1
180	62.6	61.8	61.3	60.9	60.6	60.2	59.8	59.2	58.8	58.6	58.4	58.2	58.0	57.7	57.6	57.5	57.5	57.4	57.5

C Range: 0 - 360DEG  
 C Interval: 5.0DEG  
 Test Speed: HIGH  
 Temperature:25.3DEG  
 Operators:S  
 Test Date:2024-5-30

γ Range: 0 - 180DEG  
 γ Interval: 1.0DEG  
 Test System:EVERFINE GO-2000B\_V1 SYSTEM V2.00.446  
 Humidity:65.0%  
 Test Distance:7.850m [K=1.0000]  
 Remarks:

LUMINOUS DISTRIBUTION INTENSITY DATA

Test:U:278.61V I:0.5412A P:144.02W PF:0.9552 Freq:49.98Hz Lamp Flux:24436x1 lm		
NAME: ASD-LSB5BHV-PRO-150BR	TYPE:	WEIGHT:
SPEC.: 150W 5000K	DIM.:	SERIAL No.:
MFR.: ASD LIGHTING CORP	SUR.:	Shielding Angle:

Table--4

UNIT: cd

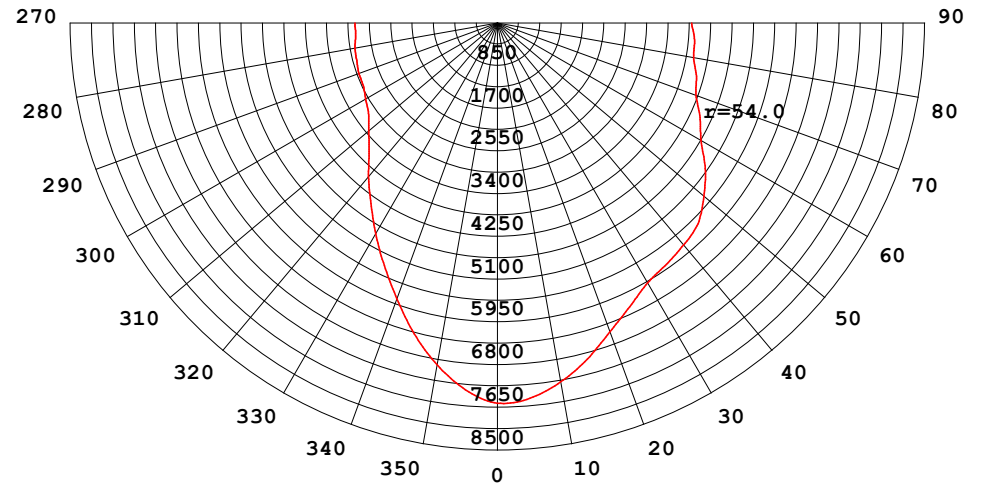
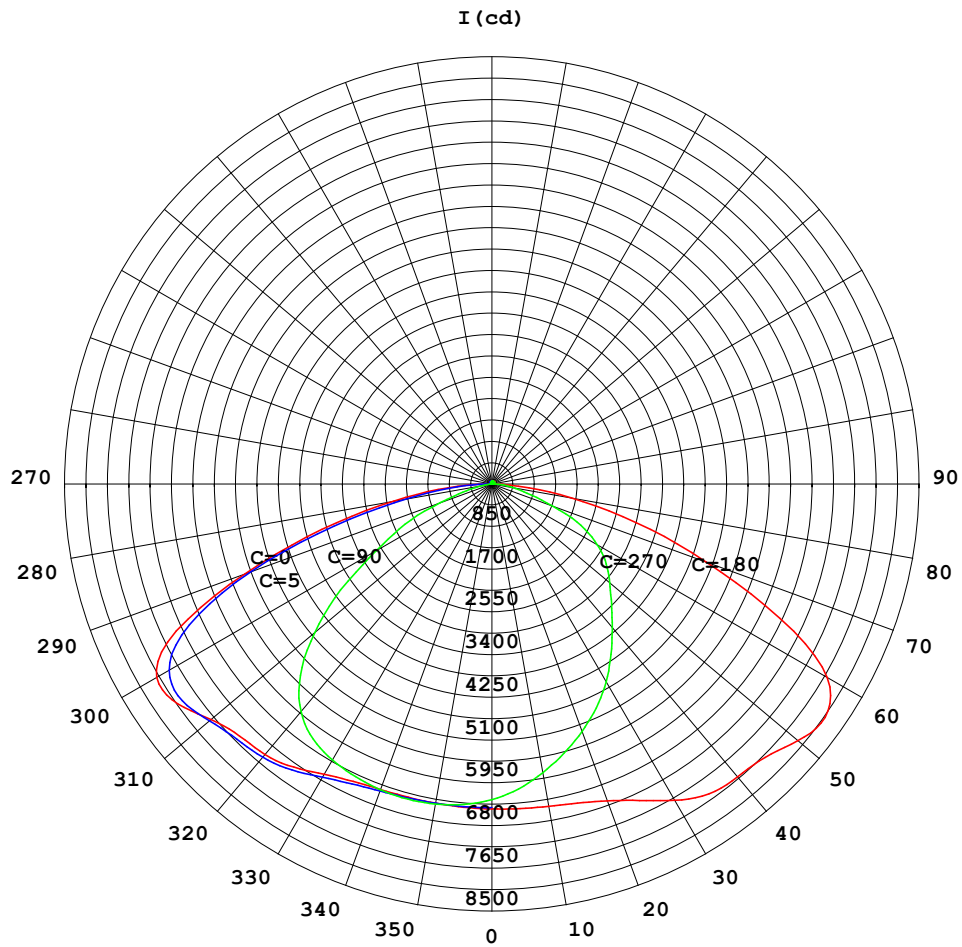
C (DEG) γ (DEG)	285	290	295	300	305	310	315	320	325	330	335	340	345	350	355				
0	6254	6260	6256	6263	6259	6264	6263	6269	6269	6274	6273	6278	6276	6279	6278				
5	6065	6078	6081	6097	6102	6119	6128	6147	6160	6180	6192	6212	6225	6242	6254				
10	5818	5843	5855	5884	5901	5938	5961	6001	6032	6072	6104	6143	6175	6210	6238				
15	5544	5579	5599	5646	5680	5731	5776	5836	5886	5951	6006	6067	6122	6179	6228				
20	5254	5300	5337	5398	5446	5512	5576	5656	5729	5818	5899	5990	6074	6159	6237				
25	4948	5012	5068	5146	5211	5296	5377	5475	5571	5686	5801	5929	6055	6179	6297				
30	4607	4697	4777	4884	4975	5082	5183	5301	5424	5571	5732	5911	6100	6281	6455				
35	4222	4339	4442	4587	4712	4856	4990	5141	5300	5494	5718	5964	6233	6477	6696				
40	3817	3941	4055	4224	4384	4587	4777	4996	5227	5488	5773	6072	6376	6634	6838				
45	3435	3537	3631	3797	3971	4220	4469	4779	5080	5398	5693	6014	6310	6598	6836				
50	3118	3178	3229	3354	3498	3745	4012	4375	4712	5077	5425	5826	6241	6642	7003				
55	2842	2875	2880	2955	3045	3254	3511	3899	4315	4809	5334	5886	6481	7005	7413				
60	2471	2517	2513	2572	2633	2798	3023	3443	4009	4753	5542	6255	6957	7432	7635				
65	1995	2059	2084	2159	2218	2362	2562	3020	3774	4806	5775	6468	6837	7007	6948				
70	1405	1529	1601	1702	1770	1915	2109	2566	3309	4368	5175	5628	5577	5225	5106				
75	820	941	1039	1182	1288	1430	1583	1905	2372	3117	3700	4049	3898	3446	3440				
80	461	509	563	689	764	873	935	1102	1274	1643	1929	2052	2324	2374	2182				
85	217	243	255	291	303	329	332	387	414	558	604	810	1080	1304	1016				
90	19.0	23.3	25.9	29.0	30.2	29.5	28.3	32.1	36.2	42.8	78.2	85.0	89.8	213	153				
95	11.8	12.7	14.2	16.0	18.2	20.4	22.5	24.2	23.1	25.9	25.9	27.3	27.5	28.6	28.2				
100	15.6	16.3	17.8	19.4	21.6	23.6	25.6	27.2	28.9	30.1	31.7	33.0	34.4	35.6	35.4				
105	20.5	21.4	23.2	24.8	27.0	28.8	30.8	32.3	34.1	35.5	37.5	39.3	41.2	42.7	42.7				
110	26.0	27.0	28.8	30.5	32.6	34.2	36.0	37.3	39.1	40.8	43.2	45.4	47.4	49.0	49.1				
115	31.7	32.6	34.5	36.0	38.0	39.4	41.0	42.3	44.3	46.2	48.7	50.9	52.7	54.3	54.4				
120	37.2	38.1	39.7	41.1	42.9	44.2	46.0	47.5	49.6	51.4	53.6	55.4	56.9	58.3	58.2				
125	42.5	43.1	44.4	45.6	47.4	48.8	50.6	52.0	53.9	55.3	56.9	58.3	59.3	60.5	60.3				
130	47.3	47.5	48.3	49.4	51.1	52.6	54.2	55.5	56.9	57.8	58.7	59.7	60.2	61.1	60.7				
135	50.9	51.3	51.8	52.5	53.9	55.2	56.6	57.6	58.5	59.1	59.7	60.5	60.6	61.2	60.3				
140	53.7	54.3	54.7	55.1	56.0	56.9	57.9	58.6	59.4	59.8	60.3	60.9	60.8	61.1	59.7				
145	55.4	56.0	56.5	56.8	57.3	57.9	58.6	59.1	59.7	60.0	60.3	60.9	60.6	60.9	59.3				
150	56.3	56.9	57.4	57.9	58.2	58.5	59.0	59.5	60.0	60.1	60.2	60.6	60.3	60.8	59.1				
155	57.0	57.5	57.9	58.3	58.8	59.2	59.6	59.9	60.5	60.7	60.8	61.2	60.7	61.4	59.8				
160	57.7	58.1	58.3	58.6	58.9	59.3	59.8	60.2	60.9	61.3	61.6	62.1	61.6	62.3	60.8				
165	58.2	58.5	58.6	58.8	59.0	59.3	59.6	60.0	60.6	61.0	61.6	62.4	62.1	62.9	61.7				
170	58.5	58.7	58.7	58.8	59.0	59.2	59.5	59.7	60.3	60.7	61.3	62.3	62.3	63.2	62.1				
175	58.3	58.4	58.4	58.5	58.6	58.8	59.0	59.3	59.9	60.2	60.7	61.7	62.0	63.2	62.5				
180	57.6	57.8	57.8	57.8	57.9	58.0	58.2	58.4	58.9	59.2	59.6	60.4	60.6	62.1	62.0				

C Range: 0 - 360DEG  
 C Interval: 5.0DEG  
 Test Speed: HIGH  
 Temperature:25.3DEG  
 Operators:S  
 Test Date:2024-5-30

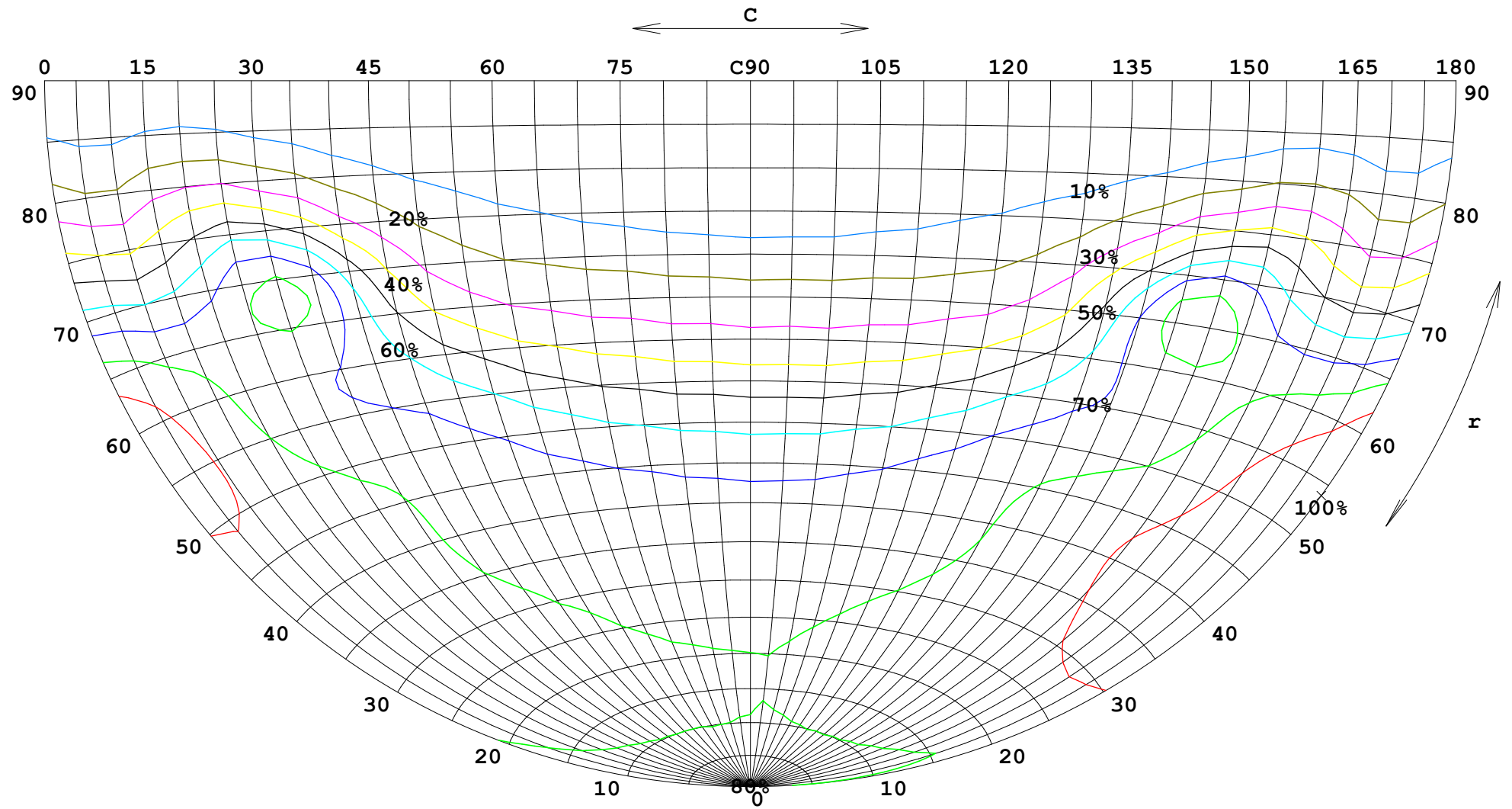
γ Range: 0 - 180DEG  
 γ Interval: 1.0DEG  
 Test System:EVERFINE GO-2000B\_V1 SYSTEM V2.00.446  
 Humidity:65.0%  
 Test Distance:7.850m [K=1.0000]  
 Remarks:

**FLUX DATA:**

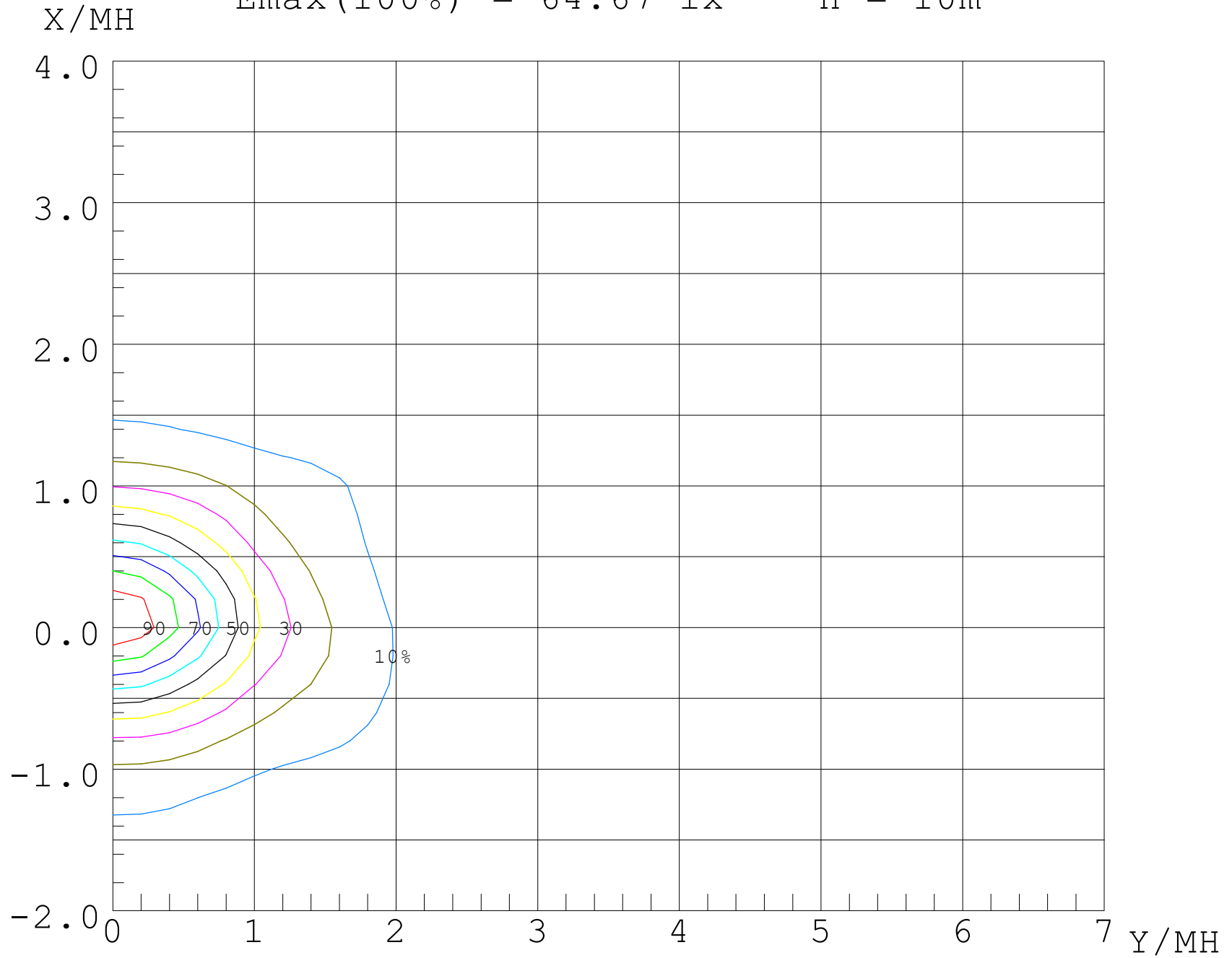
LOR: 100.0 %  
 STREET DOWN: 13065 lm  
 STREET UP: 105.0 lm  
 HOUSE DOWN: 11130 lm  
 HOUSE UP: 136.2 lm



$I_{max}(100\%) = 8097 \text{ cd}$



$E_{max}(100\%) = 64.67 \text{ lx}$        $H = 10\text{m}$



UF (%)

80

70

60

50

40

30

20

10

0

-2

-1

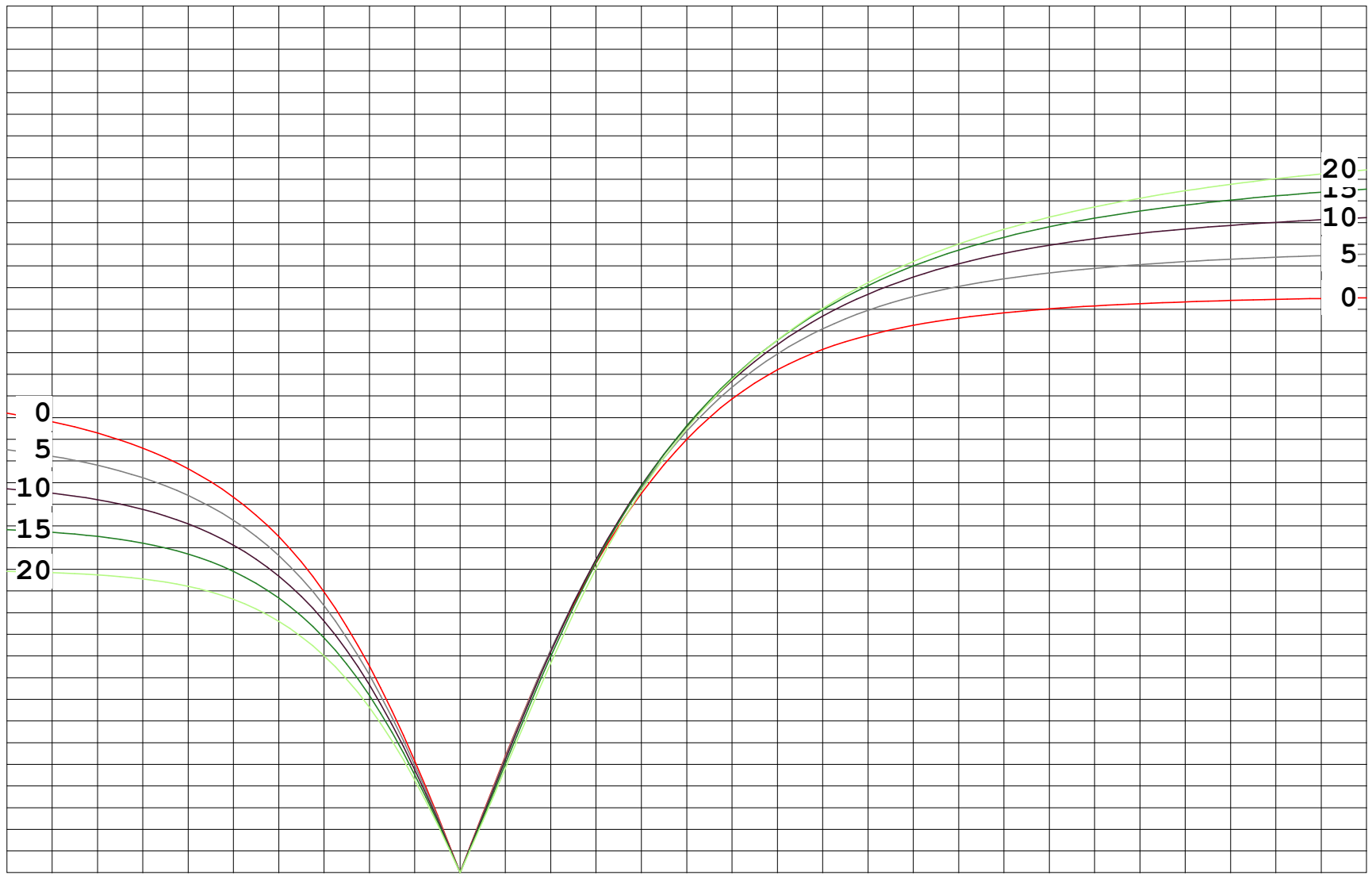
0

1

2

3

4 X/MH



0  
5  
10  
15  
20

20  
15  
10  
5  
0