



# LED SLIM WALLPACK

► **DESIGN** - LED SLIM WALLPACK has a die-cast aluminum housing with excellent heat dissipation, tempered glass lens to protect the LED chips and provide high illuminance, and anti-leakage silicone gaskets. It is designed to operate on 120-277V circuits with a 0-10V dimmable driver. Slim housing provides a nice design with superior illumination. Surge protection 6kV protects the fixture from voltage spikes and current surges.

► **INSTALLATION** - The fixture can be mounted to a junction box or directly to a wall. Perfect commercial or industrial solution for outdoor security lighting, wall perimeter lighting, garages, large backyards, warehouses, hotels, and many other applications. It is also Wet Locations rated.

► **ADVANTAGES** - With calculated lifespan up to 145,000 hours, these fixtures are made to last decades under normal operation! ASD provides a 5-year limited warranty along with UL and DLC Premium certifications to guarantee top quality products and safety!



Model	Watts	Voltage	Dimmable	Lumens	CCT	Finish	Dimensions (LxWxH)	Pre-installed
ASD-WLS-A50BR-PC	30/40/50W	120-277 V	0-10 V	up to 6,640 lm	3CCT (3,000/4,000/5,000 K)	Bronze	11-3/4" x 8-3/4" x 4-1/8"	Photocell
ASD-WLS-A60BR-PC	40/50/60W	120-277 V	0-10 V	up to 7,706 lm	3CCT (3,000/4,000/5,000 K)	Bronze	14" x 9-3/16" x 4-5/16"	Photocell
ASD-WLS-A80BR-PC	60/70/80W	120-277 V	0-10 V	up to 10,239 lm	3CCT (3,000/4,000/5,000 K)	Bronze	14" x 9-3/16" x 4-5/16"	Photocell
ASD-WLS-A120BR-PC	80/100/120W	120-277 V	0-10 V	up to 14,753 lm	3CCT (3,000/4,000/5,000 K)	Bronze	14" x 9-3/16" x 4-5/16"	Photocell

For detailed luminous flux information please refer to Annex 1, page 2.

## ORDERING INFORMATION

Model	Pcs. per carton	Carton size	Carton weight	UPC
ASD-WLS-A50BR-PC	1	12.3" x 9.9" x 5.4"	6.4 lbs	810128117951
ASD-WLS-A60BR-PC	1	14.8" x 10.4" x 5.5"	8.6 lbs	810128118552
ASD-WLS-A80BR-PC	1	14.8" x 10.4" x 5.5"	8.6 lbs	810128118569
ASD-WLS-A120BR-PC	1	14.8" x 10.4" x 5.5"	8.6 lbs	810128118576

For most up-to-date spec sheets please refer to [asd-lighting.com](http://asd-lighting.com)



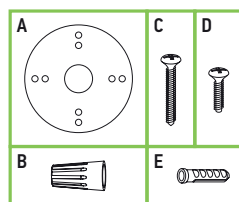
# LED SLIM WALLPACK

## PRODUCT SPECIFICATIONS:

Construction & Materials		
Housing	Aluminum	
Lens	Glass	
Finish	Bronze	
Weight	7.5 lbs (3.4 kg)	
	for 50W model: 5.6 lbs (2.5 kg)	
Environmental system		
Work environment	Suitable for Wet Locations, IP65	
Operating temperature	-40°F to 122°F (-40°C to 50°C)	
L-70 Life	R > 102,000 hrs; C > 167,000 hrs	
	for 120W model: R > 102,000 hrs; C > 150,000 hrs	
Optical system		
Color temperature	3CCT switch (3,000/4,000/5,000 K), 5,000 K by default	
CRI	> 80	
Electrical system		
Input voltage	120-277 V	
Max input current	ASD-WLS-A50BR-PC	0.42 A
	ASD-WLS-A60BR-PC	0.5 A
	ASD-WLS-A80BR-PC	0.67 A
	ASD-WLS-A120BR-PC	0.98 A
Inrush current (Action time)	80 A (1 S)	
Off state power	0W	
Power consumption	ASD-WLS-A50BR-PC	30/40/50W
	ASD-WLS-A60BR-PC	40/50/60W
	ASD-WLS-A80BR-PC	60/70/80W
	ASD-WLS-A120BR-PC	80/100/120W
Power factor	> 0.9	
Output voltage	ASD-WLS-A50BR-PC	230 V
	ASD-WLS-A60BR-PC	226 V
	ASD-WLS-A80BR-PC	199 V
	ASD-WLS-A120BR-PC	226 V
Max output current	ASD-WLS-A50BR-PC	0.2 A
	ASD-WLS-A60BR-PC	0.25 A
	ASD-WLS-A80BR-PC	0.385 A
	ASD-WLS-A120BR-PC	0.48 A
Surge protection	4 kV / 6 kV	for 120W model: 6 kV / 6 kV
Dimming compatible controls		
Brand	Leviton	Lutron
Models	IP710-LFZ	DVSTV-453P
Regular and voluntary certifications		
5-year limited warranty		
DesignLights Consortium (DLC) listed (Classification: Premium)		
Main: Outdoor luminaires; General application: Mid/High output;		
Primary use: Outdoor non-cutoff and semi-cutoff wall-mounted area luminaires		
UL certified E473804		

## PACKAGE CONTENTS:

Description	Quantity
LED Slim Wallpack	1
EVA gasket (A)	1
Wire nut (B)	3
Self-tapping screw (C)	4
Screw (D)	2
Anchor (E)	4
Box	1



## BUILT-IN PHOTOCELL INFORMATION

Specifications	
Light level to turn ON	≤ 80 lux (7.4 fc)
Light level to turn OFF	≥ 150 lux (13.9 fc)
Operating temperature	-40°F to 140°F (-40°C to 60°C)

The dusk-to-dawn sensor automatically turns the fixture off during daylight hours. The photocell can be disabled with on-off switch.

## ANNEX 1

Model	Watts	3,000 K	4,000 K	5,000 K
ASD-WLS-A50BR-PC	30W	3,992 lm	4,117 lm	4,209 lm
	40W	5,240 lm	5,454 lm	5,480 lm
	50W	6,306 lm	6,640 lm	6,577 lm
ASD-WLS-A60BR-PC	40W	4,928 lm	5,163 lm	5,302 lm
	50W	5,988 lm	6,333 lm	6,471 lm
	60W	7,070 lm	7,553 lm	7,706 lm
ASD-WLS-A80BR-PC	60W	7,504 lm	7,781 lm	7,794 lm
	70W	8,657 lm	9,045 lm	9,035 lm
	80W	9,716 lm	10,232 lm	10,239 lm
ASD-WLS-A120BR-PC	80W	9,761 lm	10,207 lm	10,126 lm
	100W	11,939 lm	12,602 lm	12,427 lm
	120W	13,807 lm	14,753 lm	14,376 lm

## BUG RATING

Model	
ASD-WLS-A50BR-PC	B1-U3-G3
ASD-WLS-A60BR-PC	
ASD-WLS-A80BR-PC	B1-U3-G4
ASD-WLS-A120BR-PC	

For most up-to-date spec sheets please refer to [asd-lighting.com](http://asd-lighting.com)



# LED SLIM WALLPACK

## INSTALLATION GUIDE

### IMPORTANT SAFETY INFORMATION:

Please read all the instructions below before installation.

- ▶ Make sure that the supply voltage corresponds to the rated product voltage.
- ▶ The product must be installed by a qualified electrician in accordance with the National Electrical Code and corresponding local codes.
- ▶ If the product is damaged, do not use it.

### ⚠ WARNING

**Risk of personal injury – read and follow all warnings and installation instructions.** Keep or give to the owner for future reference.

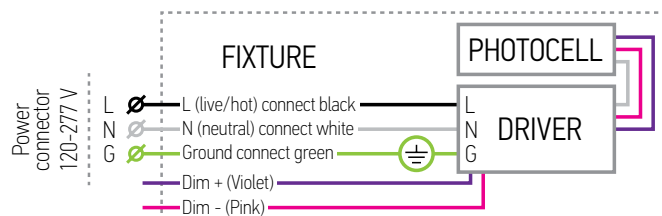
**Risk of cuts:** Wear gloves to prevent cuts or abrasions when removing from carton, handling, installing, and maintaining this product.

**Risk of electric shock:** This product must be installed in accordance with the applicable installation code by a person familiar with the construction and operation of the product and the hazards involved.

**Risk of Fire:** Minimum 194°F supply conductors. Consult a qualified electrician to ensure correct branch circuit conductor.

ASD® assumes no responsibility for claims arising out of improper or careless Installation or handling of this product.

### ELECTRICAL SCHEMATIC DIAGRAM:

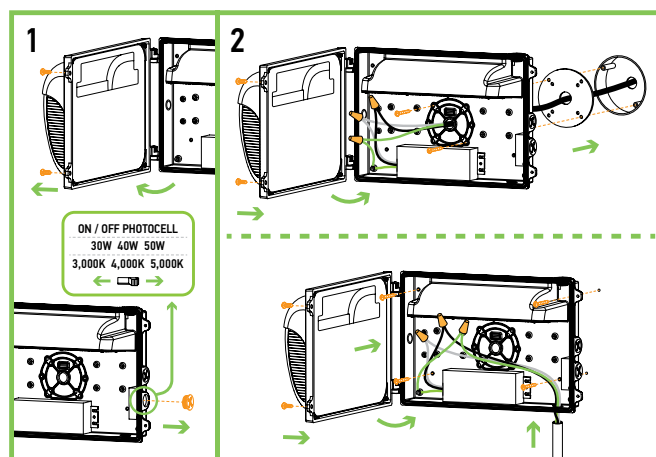


### INSTALLATION STEPS:

**1. Prepare the fixture:** Start by removing the two screws holding the rear cover of the fixture, then take off the cover. Next, remove the knockout on the side of the fixture. Choose the desired color temperature and power level (options may vary by model) and adjust the switch to turn the photocell on or off as needed.

**2. Junction box installation:** Use a screwdriver to remove the back cover of the radiator body. Drill the necessary mounting holes, then attach an EVA foam pad to the back of the radiator body. Secure the radiator body to the surface or junction box with screws, and insert the power cord. Connect the wires: Black to Black, White to White, Green to Green (Purple to Purple, Pink to Pink if dimming is needed). Place the housing cover onto the hooks, close it, and tighten the screws to secure.

**Wall installation:** Secure the rear cover to the wall, and remove one of the side caps (top, side, or bottom) to insert the power cord. Connect the wires: Black to Black, White to White, Green to Green (Purple to Purple, Pink to Pink if dimming is needed). Place the housing cover onto the hooks, close it, and tighten the screws to secure.



For most up-to-date spec sheets please refer to [asd-lighting.com](http://asd-lighting.com)