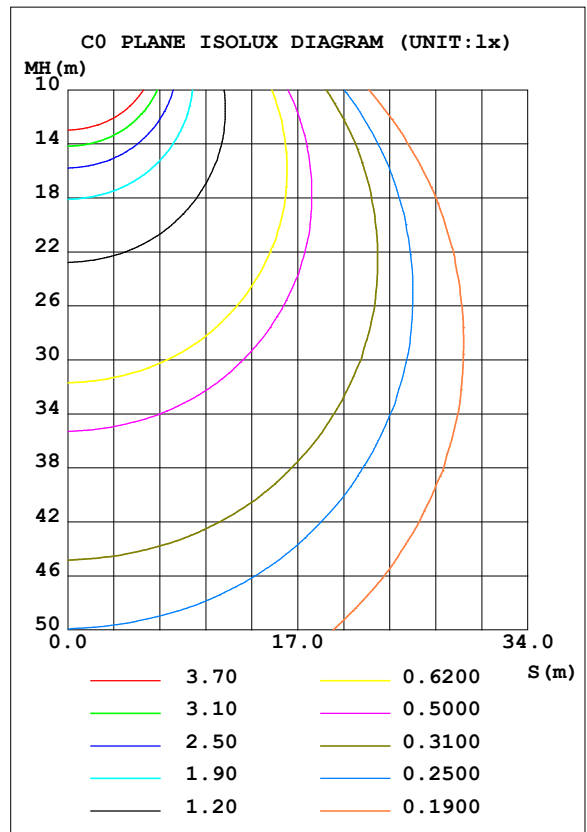
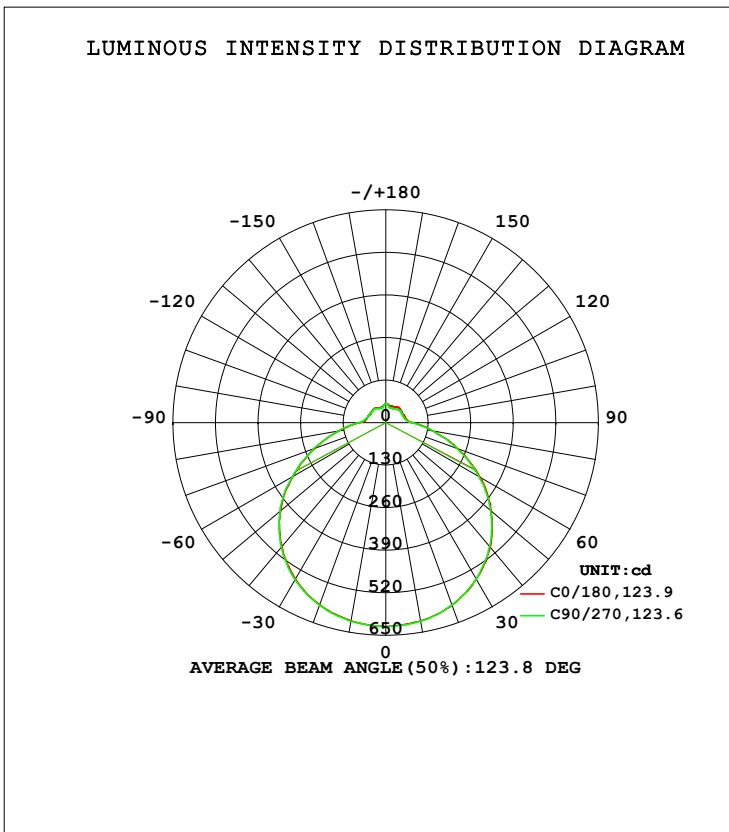


LUMINAIRE PHOTOMETRIC TEST REPORT

Test:U:120.01V I:0.3917A P:42.878W PF:0.9115 Freq:0Hz Lamp Flux:2474.94x1 lm		
NAME: ADS lighting Corp	TYPE:	WEIGHT:
SPEC.:ASD-LFC-LF-20D42-AC-NK-5000K	DIM.:	SERIAL No.:
MFR.: ADS lighting Corp	SUR.:0.485*0.485	Shielding Angle:

DATA OF LAMP		PHOTOMETRIC DATA Eff: 57.72 lm/W			
MODEIASD-LFC-LF-20D42-AC-NK		Imax (cd)	623.3	S/MH (C0/180)	1.32
NOMINAL POWER (W)	--	LOR (%)	100.0	S/MH (C90/270)	1.32
RATED VOLTAGE (V)	--	TOTAL FLUX (lm)	2474.9	<input type="checkbox"/> UP, DN (C0-180)	7.3, 42.7
NOMINAL FLUX (lm)	2474.94	CIE CLASS	SEMI-D.	<input type="checkbox"/> UP, DN (C180-360)	7.2, 42.8
LAMPS INSIDE	1	<input type="checkbox"/> up (%)	14.5	CIBSE SHR NOM	1.50
TEST VOLTAGE (V)	--	<input type="checkbox"/> down (%)	85.5	CIBSE SHR MAX	1.50



C Range: 0 - 360DEG
 C Interval: 22.5DEG
 Test Speed: HIGH
 Temperature: 25.3DEG
 Operators: admin
 Test Date: 2022-03-25

Range: 0 - 180DEG
 Interval: 1.0DEG
 Test System: EVERFINE GO-2000B_V1 SYSTEM V2.00.411
 Humidity: 65.0%
 Test Distance: 8.780m [K=1.0000]
 Remarks:

ZONAL FLUX DIAGRAM

ZONAL FLUX DIAGRAM:

mm	C0	C45	C90	C135	C180	C225	C270	C315	mm	□ zone	□ total	%lum,lamp
10	614.9	614.7	615.8	616.1	614.4	614.3	616.5	615.7	0- 10	59.03	59.03	2.39,2.39
20	593.3	593.6	592.7	592.3	591.7	592.5	593.3	594.5	10- 20	171.3	230.3	9.31,9.31
30	552.5	552.8	551.5	551.3	552.6	553.7	554.6	554.5	20- 30	265.3	495.6	20,20
40	496.5	494.6	493.9	492.4	493.8	494.0	496.4	497.8	30- 40	329.3	824.9	33.3,33.3
50	421.2	418.6	418.0	417.4	419.4	421.9	421.7	423.3	40- 50	354.6	1179	47.7,47.7
60	332.4	332.1	328.1	328.6	326.1	328.1	328.7	329.7	50- 60	337.0	1516	61.3,61.3
70	234.6	233.6	231.0	232.6	232.1	232.3	236.1	233.6	60- 70	278.3	1795	72.5,72.5
80	146.5	147.1	144.5	144.3	145.5	145.6	147.2	149.2	70- 80	198.6	1993	80.5,80.5
90	82.44	81.58	79.87	78.71	79.95	82.19	83.52	82.25	80- 90	121.9	2115	85.5,85.5
100	63.91	62.73	61.40	60.37	61.36	61.95	63.72	62.11	90-100	74.94	2190	88.5,88.5
110	61.14	58.08	56.89	54.99	57.86	56.25	57.51	56.90	100-110	63.05	2253	91,91
120	58.92	58.88	56.69	56.27	54.67	56.91	56.21	57.44	110-120	56.12	2309	93.3,93.3
130	60.55	53.56	57.01	51.86	55.91	52.46	55.49	53.82	120-130	49.93	2359	95.3,95.3
140	61.07	51.42	53.87	49.57	55.97	48.71	54.85	50.46	130-140	41.39	2401	97,97
150	56.31	51.89	50.37	48.80	52.34	48.50	50.21	50.15	140-150	32.25	2433	98.3,98.3
160	54.05	50.41	47.65	47.73	49.53	47.67	47.15	49.27	150-160	23.03	2456	99.2,99.2
170	55.23	53.49	51.56	53.78	51.90	51.88	50.00	53.37	160-170	13.86	2470	99.8,99.8
180	58.38	54.54	59.24	54.76	58.43	54.57	59.16	54.70	170-180	5.143	2475	100,100
DEG	LUMINOUS INTENSITY:cd									UNIT:lm		

Conical surface Flux(90deg): 1001.7 lm

%lum = 40.5%

%lamp = 40.5%

Conical surface Flux(120deg): 1516.4 lm

%lum = 61.3%

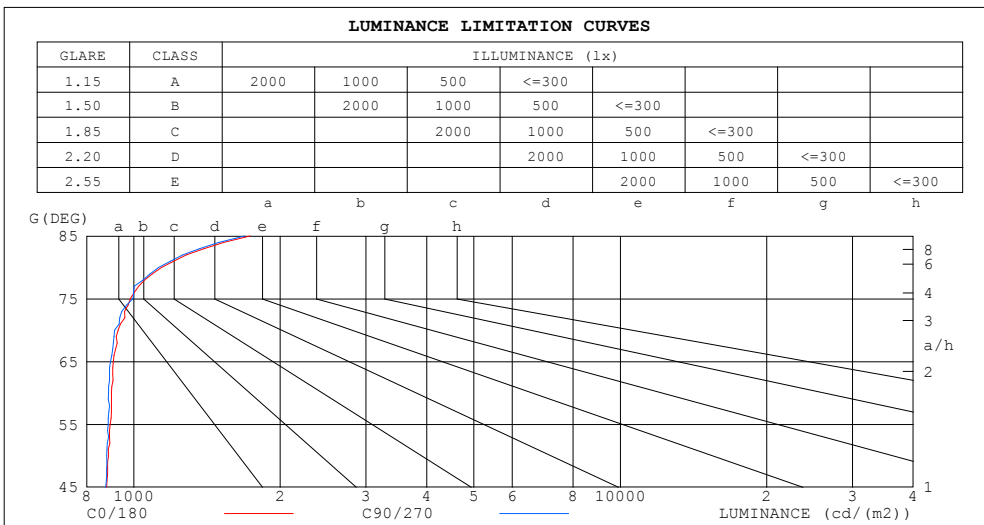
%lamp = 61.3%

C Range: 0 - 360DEG
 C Interval: 22.5DEG
 Test Speed: HIGH
 Temperature:25.3DEG
 Operators:admin
 Test Date:2022-03-25

□ Range: 0 - 180DEG
 □ Interval: 1.0DEG
 Test System:EVERFINE GO-2000B_V1 SYSTEM V2.00.411
 Humidity:65.0%
 Test Distance:8.780m [K=1.0000]
 Remarks:

LUMINANCE LIMITATION CURVES

Test:U:120.01V I:0.3917A P:42.878W PF:0.9115 Freq:0Hz Lamp Flux:2474.94x1 lm		
NAME: ADS lighting Corp	TYPE:	WEIGHT:
SPEC.:ASD-LFC-LF-20D42-AC-NK-5000K	DIM.:	SERIAL No.:
MFR.: ADS lighting Corp	SUR.:0.485*0.485	Shielding Angle:



LUMINANCE cd/(m2)		
G (DEG)	C0/180	C90/270
85	1734	1690
80	1142	1126
75	984	995
70	928	914
65	908	896
60	900	888
55	895	887
50	887	880
45	880	876

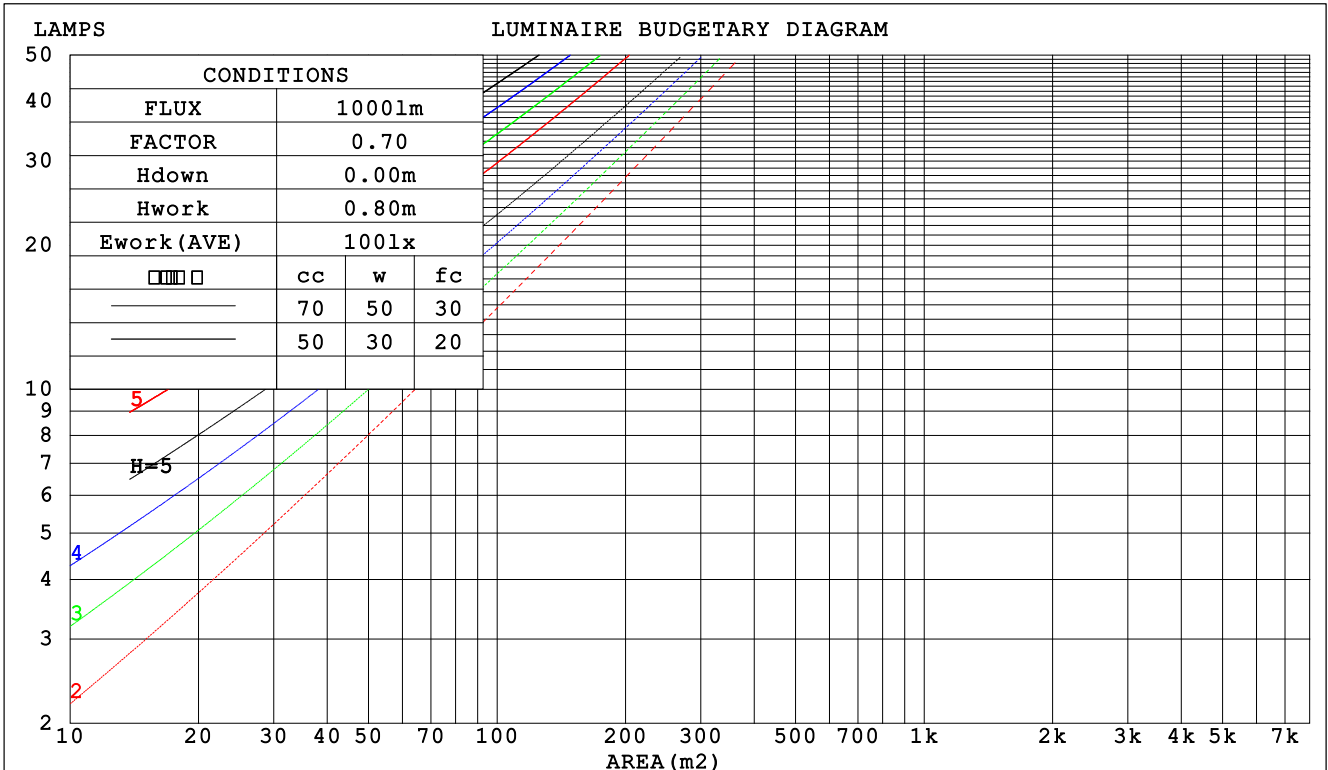
C Range: 0 - 360DEG
 C Interval: 22.5DEG
 Test Speed: HIGH
 Temperature:25.3DEG
 Operators:admin
 Test Date:2022-03-25

Range: 0 - 180DEG
 Interval: 1.0DEG
 Test System:EVERFINE GO-2000B_V1 SYSTEM V2.00.411
 Humidity:65.0%
 Test Distance:8.780m [K=1.0000]
 Remarks:

CU AND LUMINAIRE BUDGETARY ESTIMATE DIAGRAM

Test:U:120.01V I:0.3917A P:42.878W PF:0.9115 Freq:0Hz Lamp Flux:2474.94x1 lm		
NAME: ADS lighting Corp	TYPE:	WEIGHT:
SPEC.:ASD-LFC-LF-20D42-AC-NK-5000K	DIM.:	SERIAL No.:
MFR.: ADS lighting Corp	SUR.:0.485*0.485	Shielding Angle:

□cc	80%			70%			50%			30%			10%			0
□w	50%	30%	10%	50%	30%	10%	50%	30%	10%	50%	30%	10%	50%	30%	10%	0
□fc	20%			20%			20%			20%			20%			0
RCR	RCR:Room Cavity Ratio						Coefficients of Utilization(CU)									
0.0	1.16	1.16	1.16	1.11	1.11	1.11	1.03	1.03	1.03	.96	.96	.96	.89	.89	.89	.85
1.0	.98	.93	.89	.95	.90	.86	.88	.84	.81	.81	.78	.76	.75	.73	.71	.68
2.0	.85	.77	.71	.82	.75	.69	.76	.70	.65	.70	.66	.62	.65	.61	.58	.55
3.0	.74	.65	.58	.71	.63	.57	.66	.59	.54	.61	.56	.51	.57	.52	.49	.46
4.0	.65	.56	.49	.63	.54	.48	.58	.51	.46	.54	.48	.43	.50	.45	.41	.39
5.0	.58	.49	.42	.56	.47	.41	.52	.45	.39	.48	.42	.37	.45	.40	.36	.33
6.0	.52	.43	.36	.50	.42	.35	.47	.39	.34	.44	.37	.32	.41	.35	.31	.29
7.0	.47	.38	.32	.45	.37	.31	.42	.35	.30	.40	.33	.29	.37	.32	.27	.25
8.0	.43	.34	.28	.41	.33	.27	.39	.32	.26	.36	.30	.25	.34	.29	.24	.22
9.0	.39	.31	.25	.38	.30	.25	.36	.29	.24	.33	.27	.23	.31	.26	.22	.20
10.0	.36	.28	.23	.35	.27	.22	.33	.26	.21	.31	.25	.21	.29	.24	.20	.18



C Range: 0 - 360DEG
 C Interval: 22.5DEG
 Test Speed: HIGH
 Temperature:25.3DEG
 Operators:admin
 Test Date:2022-03-25

□ Range: 0 - 180DEG
 □ Interval: 1.0DEG
 Test System:EVERFINE GO-2000B_V1 SYSTEM V2.00.411
 Humidity:65.0%
 Test Distance:8.780m [K=1.0000]
 Remarks:

WEC AND CCEC

Test:U:120.01V I:0.3917A P:42.878W PF:0.9115 Freq:0Hz Lamp Flux:2474.94x1 lm		
NAME: ADS lighting Corp	TYPE:	WEIGHT:
SPEC.:ASD-LFC-LF-20D42-AC-NK-5000K	DIM.:	SERIAL No.:
MFR.: ADS lighting Corp	SUR.:0.485*0.485	Shielding Angle:

<input type="checkbox"/> cc	80%	70%	50%	30%	10%	0
<input type="checkbox"/> w	50% 30% 10%	50% 30% 10%	50% 30% 10%	50% 30% 10%	50% 30% 10%	0
<input type="checkbox"/> fc	20%	20%	20%	20%	20%	0
RCR	RCR:Room Cavity Ratio		Wall Exitance Coefficients (WEC)			
0.0						
1.0	.350 .199 .063	.338 .193 .061	.317 .182 .058	.297 .171 .055	.278 .161 .052	
2.0	.313 .172 .053	.303 .167 .051	.283 .157 .049	.265 .149 .047	.248 .140 .044	
3.0	.283 .151 .045	.273 .146 .044	.256 .139 .042	.240 .131 .040	.224 .124 .038	
4.0	.257 .134 .039	.249 .130 .038	.233 .124 .037	.218 .117 .035	.204 .111 .034	
5.0	.236 .120 .035	.228 .117 .034	.214 .111 .033	.200 .106 .031	.188 .100 .030	
6.0	.217 .109 .031	.210 .106 .031	.197 .101 .029	.185 .096 .028	.173 .091 .027	
7.0	.201 .099 .028	.195 .097 .028	.183 .092 .027	.172 .088 .026	.161 .084 .025	
8.0	.187 .091 .026	.181 .089 .025	.170 .085 .024	.160 .081 .023	.150 .077 .022	
9.0	.175 .085 .024	.169 .083 .023	.159 .079 .022	.150 .075 .022	.141 .072 .021	
10.0	.164 .079 .022	.159 .077 .021	.150 .073 .021	.141 .070 .020	.133 .067 .019	

<input type="checkbox"/> cc	80%	70%	50%	30%	10%	0
<input type="checkbox"/> w	50% 30% 10%	50% 30% 10%	50% 30% 10%	50% 30% 10%	50% 30% 10%	0
<input type="checkbox"/> fc	20%	20%	20%	20%	20%	0
RCR	RCR:Room Cavity Ratio		Ceiling Cavity Exitance Coefficients (CCEC)			
0.0	.301 .301 .301	.257 .257 .257	.176 .176 .176	.101 .101 .101	.032 .032 .032	
1.0	.295 .267 .243	.252 .230 .209	.172 .158 .145	.099 .091 .084	.032 .029 .027	
2.0	.287 .244 .208	.246 .210 .180	.169 .145 .125	.097 .085 .073	.031 .027 .024	
3.0	.280 .227 .185	.240 .196 .161	.165 .136 .113	.095 .080 .066	.031 .026 .022	
4.0	.272 .215 .171	.234 .185 .148	.161 .129 .104	.093 .076 .062	.030 .025 .020	
5.0	.265 .205 .160	.227 .177 .139	.157 .124 .098	.091 .073 .058	.029 .024 .019	
6.0	.258 .197 .153	.221 .170 .133	.153 .119 .094	.089 .070 .056	.029 .023 .018	
7.0	.251 .190 .147	.216 .165 .128	.149 .115 .091	.087 .068 .054	.028 .022 .018	
8.0	.244 .184 .143	.210 .160 .125	.145 .112 .089	.085 .066 .053	.027 .022 .017	
9.0	.238 .180 .140	.205 .156 .122	.142 .110 .087	.083 .065 .052	.027 .021 .017	
10.0	.232 .175 .138	.200 .152 .120	.139 .107 .085	.081 .063 .051	.026 .021 .017	

C Range: 0 - 360DEG
 C Interval: 22.5DEG
 Test Speed: HIGH
 Temperature:25.3DEG
 Operators:admin
 Test Date:2022-03-25

Range: 0 - 180DEG
 Interval: 1.0DEG
 Test System:EVERFINE GO-2000B_V1 SYSTEM V2.00.411
 Humidity:65.0%
 Test Distance:8.780m [K=1.0000]
 Remarks:

UGR(Unified Glare Rating) Table

Test:U:120.01V I:0.3917A P:42.878W PF:0.9115 Freq:0Hz Lamp Flux:2474.94x1 lm										
NAME: ADS lighting Corp					TYPE:			WEIGHT:		
SPEC.:ASD-LFC-LF-20D42-AC-NK-5000K					DIM.:			SERIAL No.:		
MFR.: ADS lighting Corp					SUR.:0.485*0.485			Shielding Angle:		
ceiling/cavity	0.7	0.7	0.5	0.5	0.3	0.7	0.7	0.5	0.5	0.3
walls	0.5	0.3	0.5	0.3	0.3	0.5	0.3	0.5	0.3	0.3
working plane	0.2	0.2	0.2	0.2	0.2	0.2	0.2	0.2	0.2	0.2
Room dimensions	Viewed crosswise					Viewed endwise				
x = 2H y = 2H	11.6	13.0	12.1	13.5	14.0	11.6	13.0	12.1	13.4	13.9
3H	13.5	14.8	14.0	15.2	15.8	13.4	14.7	13.9	15.2	15.7
4H	14.4	15.6	14.9	16.1	16.6	14.3	15.5	14.8	16.0	16.6
6H	15.3	16.4	15.8	16.9	17.5	15.2	16.3	15.7	16.9	17.4
8H	15.7	16.8	16.3	17.3	17.9	15.7	16.7	16.2	17.3	17.9
12H	16.2	17.3	16.8	17.8	18.4	16.1	17.2	16.7	17.7	18.3
4H 2H	12.3	13.5	12.8	14.0	14.5	12.3	13.5	12.8	14.0	14.5
3H	14.3	15.4	14.9	15.9	16.5	14.3	15.3	14.8	15.9	16.5
4H	15.4	16.4	16.0	16.9	17.6	15.3	16.3	15.9	16.9	17.5
6H	16.4	17.3	17.0	17.9	18.6	16.4	17.2	17.0	17.8	18.5
8H	17.0	17.8	17.6	18.4	19.1	16.9	17.7	17.6	18.3	19.0
12H	17.6	18.3	18.2	19.0	19.7	17.5	18.3	18.2	18.9	19.6
8H 4H	15.8	16.6	16.4	17.2	17.9	15.7	16.5	16.3	17.1	17.8
6H	17.1	17.7	17.7	18.4	19.1	17.0	17.7	17.7	18.3	19.1
8H	17.8	18.4	18.5	19.1	19.8	17.7	18.3	18.4	19.0	19.7
12H	18.6	19.1	19.3	19.8	20.6	18.5	19.1	19.2	19.7	20.5
12H 4H	15.8	16.6	16.5	17.2	17.9	15.8	16.5	16.4	17.2	17.9
6H	17.2	17.8	17.9	18.5	19.2	17.2	17.8	17.9	18.4	19.2
8H	18.0	18.6	18.7	19.2	20.0	18.0	18.5	18.7	19.2	20.0
Variations with the observer position at spacings:										
S = 1.0H	+ 0.1 / - 0.1					+ 0.1 / - 0.1				
1.5H	+ 0.2 / - 0.3					+ 0.2 / - 0.3				
2.0H	+ 0.2 / - 0.3					+ 0.2 / - 0.3				

CIE Pub.117, 2475 lm Total Lamp Luminous Flux Corrected (8log(F/F0) = 3.1)
 Area: 0.7389 m2

C Range: 0 - 360DEG
 C Interval: 22.5DEG
 Test Speed: HIGH
 Temperature:25.3DEG
 Operators:admin
 Test Date:2022-03-25

Range: 0 - 180DEG
 Interval: 1.0DEG
 Test System:EVERFINE GO-2000B_V1 SYSTEM V2.00.411
 Humidity:65.0%
 Test Distance:8.780m [K=1.0000]
 Remarks:

UTILIZATION FACTORS TABLE

Test:U:120.01V I:0.3917A P:42.878W PF:0.9115 Freq:0Hz Lamp Flux:2474.94x1 lm		
NAME: ADS lighting Corp	TYPE:	WEIGHT:
SPEC.:ASD-LFC-LF-20D42-AC-NK-5000K	DIM.:	SERIAL No.:
MFR.: ADS lighting Corp	SUR.:0.485*0.485	Shielding Angle:

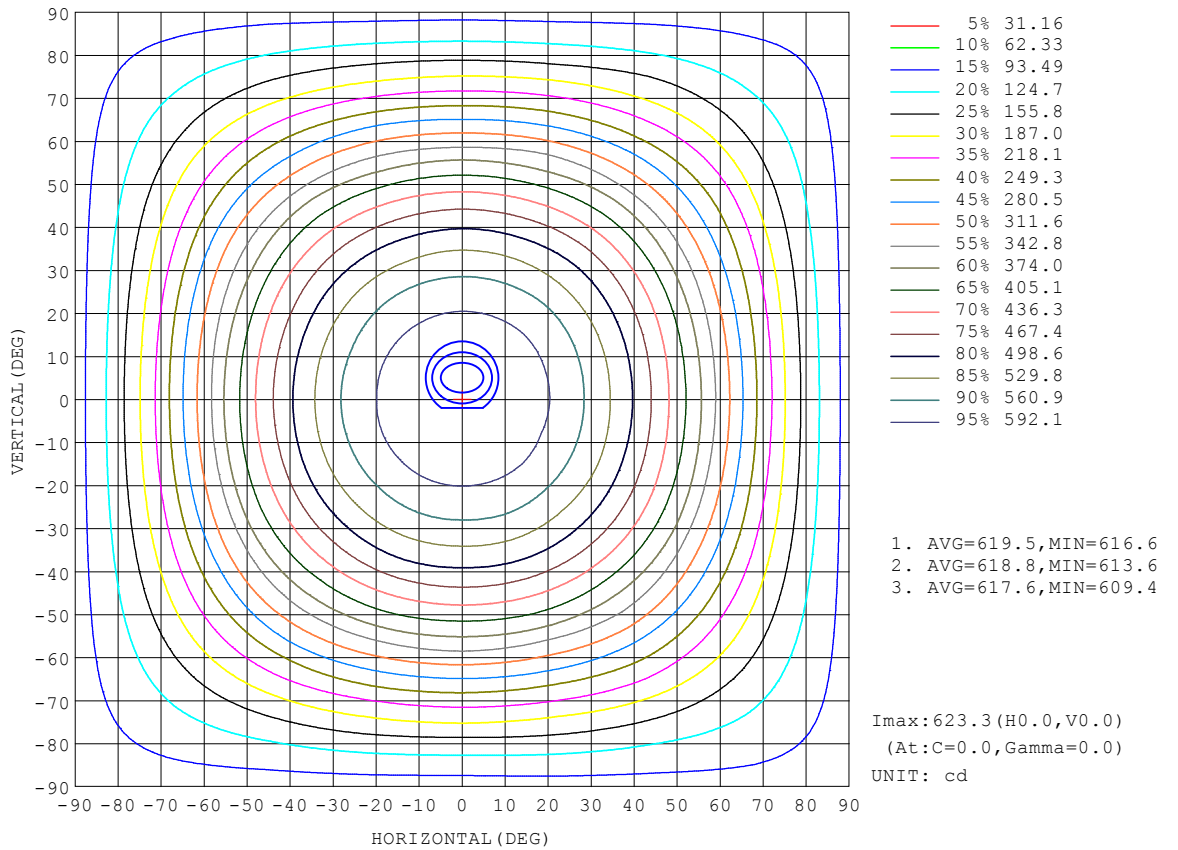
REFLECTANCE										
Ceiling	0.8	0.8	0.8	0.7	0.7	0.7	0.5	0.5	0.5	0
Walls	0.7	0.5	0.3	0.7	0.5	0.3	0.7	0.5	0.3	0
Working plane	0.2	0.2	0.2	0.2	0.2	0.2	0.2	0.2	0.2	0
ROOM INDEX	UTILIZATION FACTORS (PERCENT) $k(RI) \times RCR = 5$									
k = 0.60	51	39	31	49	38	31	48	37	31	24
0.80	60	48	40	59	47	40	56	46	39	31
1.00	68	56	48	66	55	47	63	55	46	38
1.25	75	63	55	73	62	55	69	60	53	44
1.50	80	69	61	78	67	60	73	64	58	48
2.00	87	77	70	85	75	68	79	72	66	55
2.50	92	83	75	89	80	74	83	76	70	59
3.00	95	87	80	92	85	78	86	80	75	62
4.00	100	93	87	96	90	85	89	84	80	67
5.00	103	97	91	99	93	89	92	87	84	70
ROOM INDEX	UF(total)									Direct
According to DIN EN 13032-2 2004			Suspended				SHRNOM = 1.25			

C Range: 0 - 360DEG
 C Interval: 22.5DEG
 Test Speed: HIGH
 Temperature:25.3DEG
 Operators:admin
 Test Date:2022-03-25

Range: 0 - 180DEG
 Interval: 1.0DEG
 Test System:EVERFINE GO-2000B_V1 SYSTEM V2.00.411
 Humidity:65.0%
 Test Distance:8.780m [K=1.0000]
 Remarks:

ISOCANDELA DIAGRAM

Test:U:120.01V I:0.3917A P:42.878W PF:0.9115 Freq:0Hz Lamp Flux:2474.94x1 lm		
NAME: ADS lighting Corp	TYPE:	WEIGHT:
SPEC.:ASD-LFC-LF-20D42-AC-NK-5000K	DIM.:	SERIAL No.:
MFR.: ADS lighting Corp	SUR.:0.485*0.485	Shielding Angle:

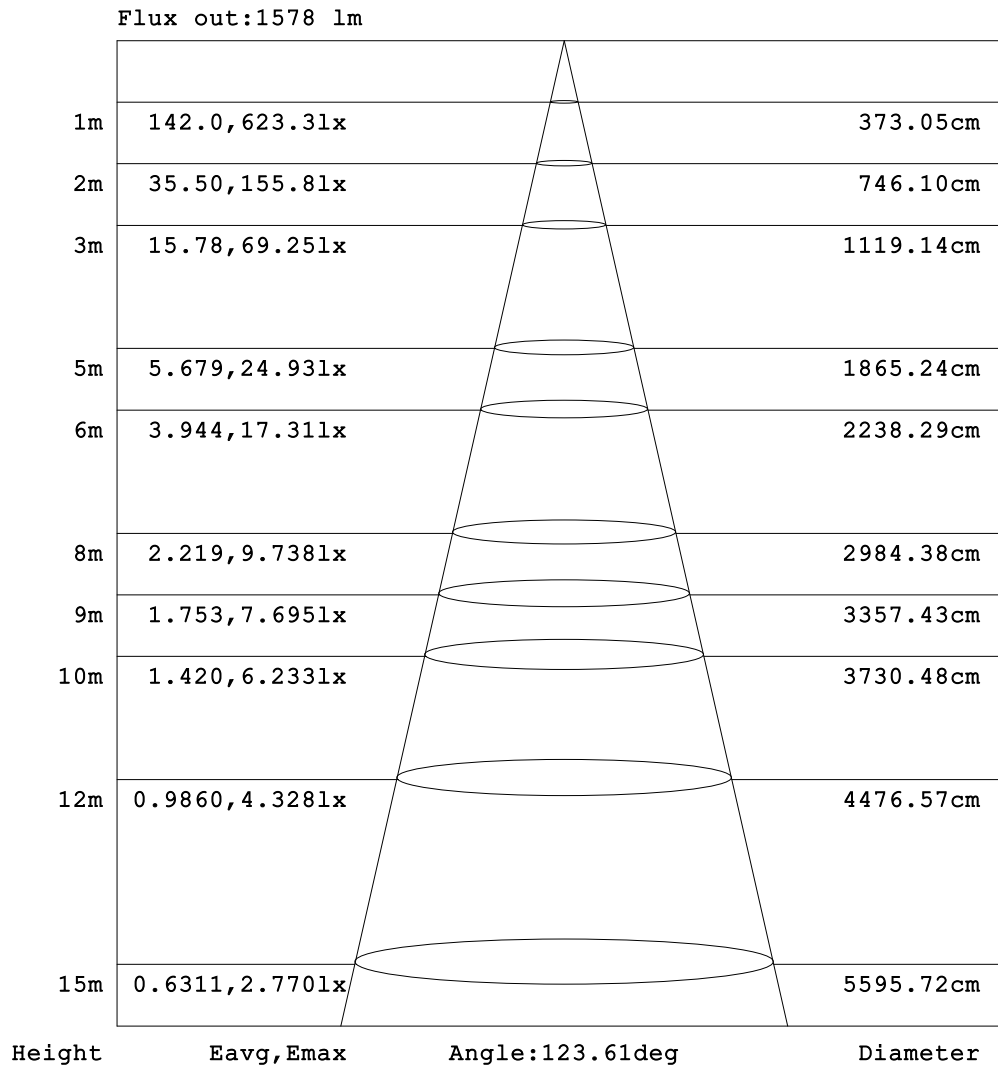


C Range: 0 - 360DEG
 C Interval: 22.5DEG
 Test Speed: HIGH
 Temperature:25.3DEG
 Operators:admin
 Test Date:2022-03-25

Range: 0 - 180DEG
 Interval: 1.0DEG
 Test System:EVERFINE GO-2000B_V1 SYSTEM V2.00.411
 Humidity:65.0%
 Test Distance:8.780m [K=1.0000]
 Remarks:

AAI Figure

Test:U:120.01V I:0.3917A P:42.878W PF:0.9115 Freq:0Hz Lamp Flux:2474.94x1 lm		
NAME: ADS lighting Corp	TYPE:	WEIGHT:
SPEC.:ASD-LFC-LF-20D42-AC-NK-5000K	DIM.:	SERIAL No.:
MFR.: ADS lighting Corp	SUR.:0.485*0.485	Shielding Angle:



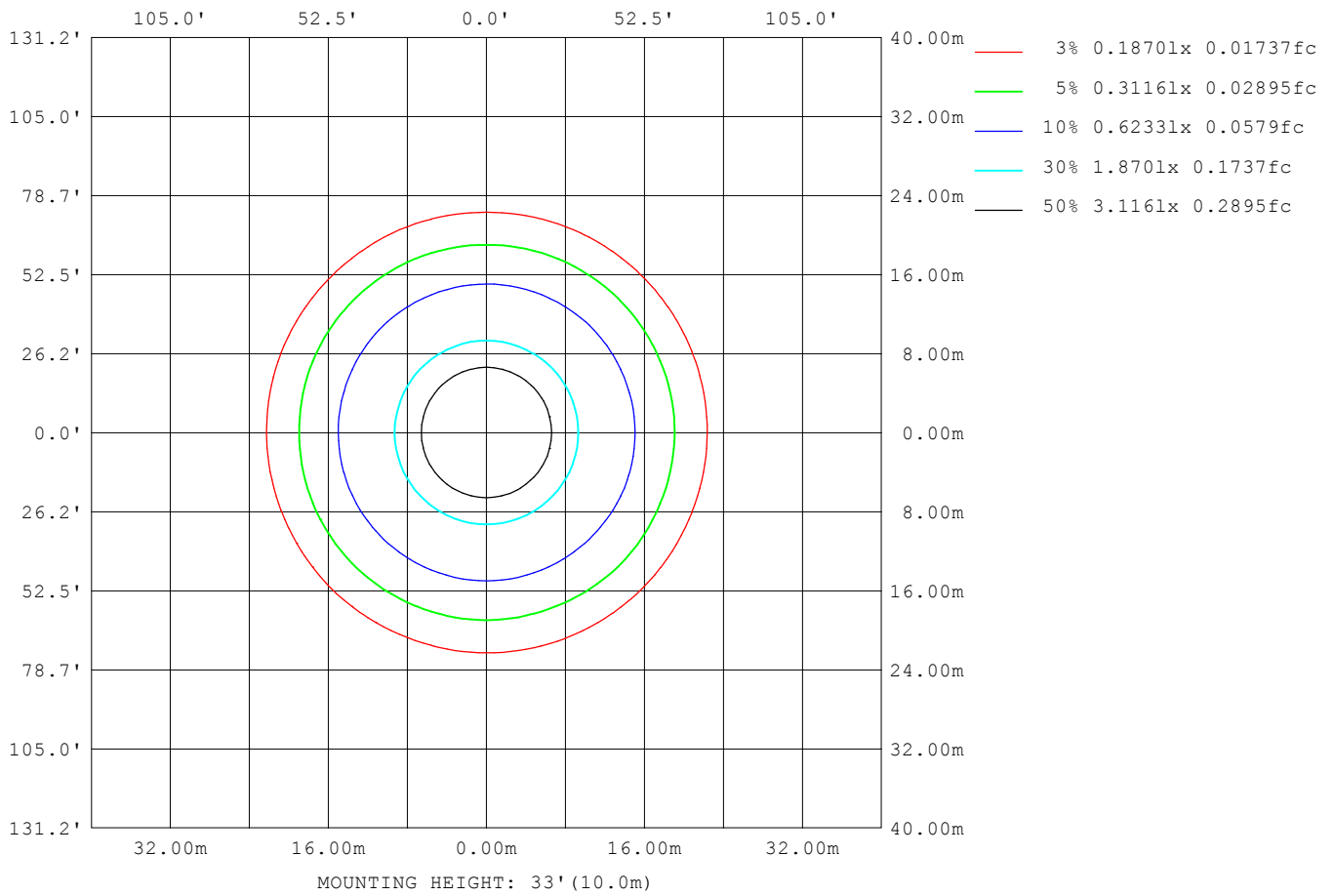
Note:The Curves indicate the illuminated area and the average illumination when the luminaire is at different distance.

C Range: 0 - 360DEG
 C Interval: 22.5DEG
 Test Speed: HIGH
 Temperature:25.3DEG
 Operators:admin
 Test Date:2022-03-25

Range: 0 - 180DEG
 Interval: 1.0DEG
 Test System:EVERFINE GO-2000B_V1 SYSTEM V2.00.411
 Humidity:65.0%
 Test Distance:8.780m [K=1.0000]
 Remarks:

ISOLUX DIAGRAM

Test:U:120.01V I:0.3917A P:42.878W PF:0.9115 Freq:0Hz Lamp Flux:2474.94x1 lm		
NAME: ADS lighting Corp	TYPE:	WEIGHT:
SPEC.:ASD-LFC-LF-20D42-AC-NK-5000K	DIM.:	SERIAL No.:
MFR.: ADS lighting Corp	SUR.:0.485*0.485	Shielding Angle:



C Range: 0 - 360DEG
 C Interval: 22.5DEG
 Test Speed: HIGH
 Temperature:25.3DEG
 Operators:admin
 Test Date:2022-03-25

Range: 0 - 180DEG
 Interval: 1.0DEG
 Test System:EVERFINE GO-2000B_V1 SYSTEM V2.00.411
 Humidity:65.0%
 Test Distance:8.780m [K=1.0000]
 Remarks:

LED Avg.L Report

Test:U:120.01V I:0.3917A P:42.878W PF:0.9115 Freq:0Hz Lamp Flux:2474.94x1 lm		
NAME: ADS lighting Corp	TYPE:	WEIGHT:
SPEC.:ASD-LFC-LF-20D42-AC-NK-5000K	DIM.:	SERIAL No.:
MFR.: ADS lighting Corp	SUR.:0.485*0.485	Shielding Angle:

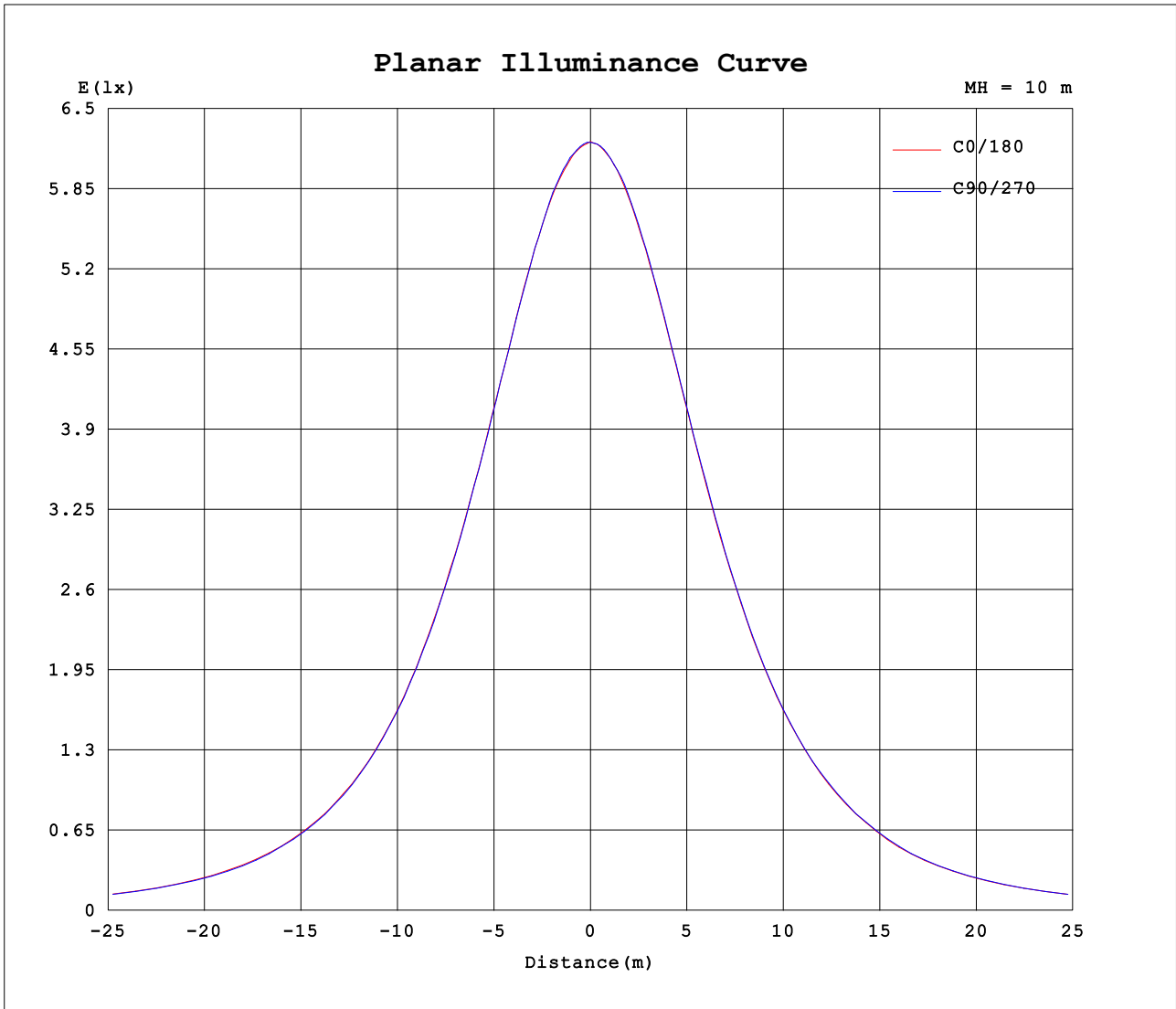
AvgL	cd/m2
L_0~180 (65) av	901
L_0~180 (75) av	977
L_0~180 (85) av	1718
L_90~270 (65) av	898
L_90~270 (75) av	989
L_90~270 (85) av	1722
L_45 (65) av	900
L_45 (75) av	981
L_45 (85) av	1720

Standard: GB/T 29293-2012

C Range: 0 - 360DEG
 C Interval: 22.5DEG
 Test Speed: HIGH
 Temperature:25.3DEG
 Operators:admin
 Test Date:2022-03-25

Range: 0 - 180DEG
 Interval: 1.0DEG
 Test System:EVERFINE GO-2000B_V1 SYSTEM V2.00.411
 Humidity:65.0%
 Test Distance:8.780m [K=1.0000]
 Remarks:

Planar Illuminance Curve



C Range: 0 - 360DEG
 C Interval: 22.5DEG
 Test Speed: HIGH
 Temperature:25.3DEG
 Operators:admin
 Test Date:2022-03-25

Range: 0 - 180DEG
 Interval: 1.0DEG
 Test System:EVERFINE GO-2000B_V1 SYSTEM V2.00.411
 Humidity:65.0%
 Test Distance:8.780m [K=1.0000]
 Remarks:

LUMINOUS DISTRIBUTION INTENSITY DATA

Test:U:120.01V I:0.3917A P:42.878W PF:0.9115 Freq:0Hz Lamp Flux:2474.94x1 lm		
NAME: ADS lighting Corp	TYPE:	WEIGHT:
SPEC.:ASD-LFC-LF-20D42-AC-NK-5000K	DIM.:	SERIAL No.:
MFR.: ADS lighting Corp	SUR.:0.485*0.485	Shielding Angle:

Table--1

UNIT: cd

C (DEG) □ (DEG)	0	22.5	45	67.5	90	112.5	135	157.5	180	202.5	225	247.5	270	292.5	315	337.5			
0	623	622	622	622	623	622	622	622	623	622	622	622	623	622	622	622			
5	620	620	619	620	621	620	619	619	620	620	620	619	621	621	621	621			
10	615	615	615	615	616	616	616	615	614	614	614	615	616	616	616	616			
15	606	606	607	606	606	607	606	607	605	604	606	605	607	607	606	606			
20	593	592	594	593	593	593	592	592	592	592	592	593	593	594	594	593			
25	575	575	575	575	576	574	574	574	574	574	575	575	576	576	577	577			
30	553	554	553	553	552	552	551	551	553	551	554	552	555	554	554	555			
35	527	528	526	525	525	525	525	526	526	525	526	526	527	528	528	527			
40	496	496	495	495	494	493	492	494	494	494	494	494	496	496	498	497			
45	460	460	459	459	458	459	457	458	460	458	459	460	461	461	463	462			
50	421	421	419	419	418	418	417	420	419	421	422	421	422	421	423	422			
55	379	379	377	376	376	376	376	378	378	376	379	377	380	378	381	379			
60	332	329	332	328	328	327	329	327	326	331	328	331	329	332	330	331			
65	284	281	281	279	280	279	280	277	279	281	280	284	281	283	284	283			
70	235	232	234	231	231	230	233	231	232	233	232	235	236	235	234	235			
75	188	190	189	187	190	188	186	186	186	187	187	186	188	190	189	188			
80	147	149	147	148	144	147	144	145	146	144	146	147	147	148	149	148			
85	112	113	111	111	109	110	108	109	110	110	112	112	113	112	112	111			
90	82.4	83.1	81.6	81.5	79.9	79.6	78.7	79.7	79.9	80.4	82.2	82.3	83.5	82.1	82.2	81.5			
95	68.1	68.1	67.3	67.4	66.6	66.0	65.0	65.7	65.5	65.9	67.1	67.9	68.8	68.2	67.6	67.1			
100	63.9	63.9	62.7	62.4	61.4	60.9	60.4	61.3	61.4	61.0	61.9	62.7	63.7	63.0	62.1	62.7			
105	62.2	61.5	59.9	59.5	58.7	58.2	57.6	58.8	58.9	58.8	58.1	58.9	60.0	59.8	58.7	60.7			
110	61.1	59.3	58.1	57.7	56.9	56.5	55.0	56.7	57.9	56.5	56.2	56.6	57.5	57.3	56.9	59.0			
115	60.0	56.9	58.6	57.5	56.5	55.9	55.6	53.9	56.1	53.7	56.4	56.1	56.5	56.3	56.9	56.4			
120	58.9	56.0	58.9	57.5	56.7	55.9	56.3	53.1	54.7	52.3	56.9	56.2	56.2	56.0	57.4	55.0			
125	59.9	55.7	57.7	57.5	57.0	54.9	55.3	52.7	55.4	51.7	56.3	55.8	55.8	55.8	57.2	54.1			
130	60.5	55.7	53.6	56.6	57.0	53.9	51.9	52.6	55.9	51.4	52.5	55.2	55.5	55.2	53.8	53.6			
135	61.0	55.5	51.1	54.4	56.1	51.7	50.2	52.3	56.2	50.5	49.3	53.9	55.2	54.0	51.3	53.0			
140	61.1	54.4	51.4	50.6	53.9	48.8	49.6	51.1	56.0	49.6	48.7	50.2	54.8	51.0	50.5	51.2			
145	59.1	53.6	51.7	50.8	52.2	48.4	48.4	51.1	54.9	49.5	48.7	49.0	52.8	48.9	49.8	51.2			
150	56.3	53.1	51.9	50.6	50.4	48.9	48.8	50.3	52.3	48.7	48.5	49.2	50.2	48.9	50.1	50.9			
155	54.7	53.3	52.0	49.0	48.3	48.5	48.6	49.1	50.2	47.2	48.4	48.7	47.8	47.7	49.7	51.1			
160	54.1	53.9	50.4	46.6	47.7	48.8	47.7	47.8	49.5	46.7	47.7	48.5	47.2	47.0	49.3	50.9			
165	53.5	52.0	48.8	45.5	47.5	48.2	47.4	47.8	49.1	45.9	46.7	47.9	47.3	46.1	48.4	50.3			
170	55.2	54.9	53.5	48.9	51.6	53.8	53.8	50.8	51.9	49.3	51.9	51.8	50.0	49.7	53.4	54.1			
175	57.4	56.9	52.8	52.6	56.7	56.7	52.9	53.3	56.1	52.2	52.4	56.4	55.7	52.3	53.5	57.1			
180	58.4	55.2	54.5	55.9	59.2	55.4	54.8	55.7	58.4	55.3	54.6	55.9	59.2	55.5	54.7	55.8			

C Range: 0 - 360DEG
 C Interval: 22.5DEG
 Test Speed: HIGH
 Temperature:25.3DEG
 Operators:admin
 Test Date:2022-03-25

□ Range: 0 - 180DEG
 □ Interval: 1.0DEG
 Test System:EVERFINE GO-2000B_V1 SYSTEM V2.00.411
 Humidity:65.0%
 Test Distance:8.780m [K=1.0000]
 Remarks: