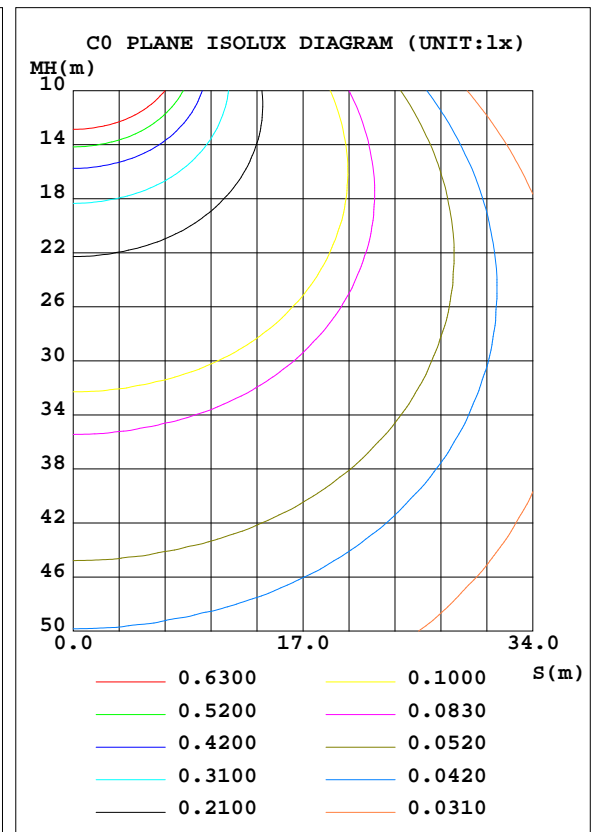
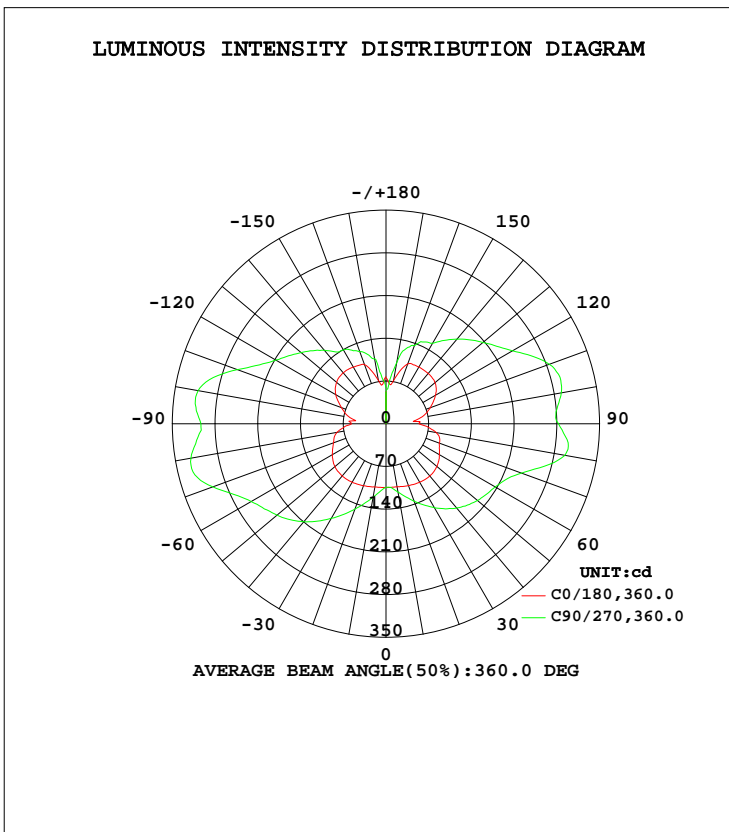


LUMINAIRE PHOTOMETRIC TEST REPORT

Test:U:120.1V I:0.2114A P:24.93W PF:0.9823 Lamp Flux:2061.17x1 lm		
NAME: ASD-LWS27-24D24CC 5000K	TYPE:N/A	WEIGHT:N/A
SPEC.:N/A	DIM.: N/A	SERIAL No.:N/A
MFR.: ASD Lighting corp	SUR.:N/A	Shielding Angle:N/A

DATA OF LAMP		PHOTOMETRIC DATA Eff: 82.68 lm/W			
MODEL	PSZ2S220624002-10	I _{max} (cd)	326.8	S/MH(C0/180)	1.63
NOMINAL POWER(W)		LOR(%)	100.0	S/MH(C90/270)	2.38
RATED VOLTAGE(V)	120	TOTAL FLUX(lm)	2061.2	η UP, DN(C0-180)	23.5,27.3
NOMINAL FLUX(lm)	2061.17	CIE CLASS	DIFFUSE	η UP, DN(C180-360)	24.6,24.5
LAMPS INSIDE	1	η up(%)	48.1	CIBSE SHR NOM	2.00
TEST VOLTAGE(V)	120	η down(%)	51.9	CIBSE SHR MAX	0.00



C Range: 0 - 360DEG
 C Interval: 22.5DEG
 Test Speed: HIGH
 Temperature:25.8DEG
 Operators:Carl
 Test Date:2022-06-24

γ Range: 0 - 180DEG
 γ Interval: 1.0DEG
 Test System:EVERFINE GO-R5000_V2 SYSTEM V2.0.351
 Humidity:42%
 Test Distance:2.526m [K=1.0000]
 Remarks:

ZONAL FLUX DIAGRAM

ZONAL FLUX DIAGRAM:

γ	C0	C45	C90	C135	C180	C225	C270	C315	γ	Φ zone	Φ total	%lum, lamp
10	105.4	115.6	122.2	116.1	105.0	108.2	113.7	109.1	0- 10	10.35	10.35	0.50,0.50
20	108.0	132.9	149.0	134.4	107.9	122.2	135.1	124.3	10- 20	33.99	44.33	2.15,2.15
30	110.8	152.0	178.8	155.1	110.7	138.8	158.8	141.5	20- 30	62.87	107.2	5.2,5.2
40	111.9	169.1	209.6	174.2	111.8	153.1	180.1	156.6	30- 40	95.50	202.7	9.83,9.83
50	109.1	180.1	233.0	186.7	109.0	161.3	195.6	166.1	40- 50	127.6	330.3	16,16
60	101.6	184.1	254.9	193.0	101.3	163.5	207.0	169.0	50- 60	153.7	484.0	23.5,23.5
70	91.56	188.6	302.1	204.0	93.18	164.8	236.3	172.9	60- 70	175.9	660.0	32,32
80	81.54	192.7	324.4	211.2	83.67	178.0	297.7	191.3	70- 80	203.4	863.4	41.9,41.9
90	56.39	178.1	303.2	191.8	54.25	166.6	282.7	180.3	80- 90	205.9	1069	51.9,51.9
100	60.32	182.8	312.7	193.5	57.57	175.7	291.6	189.1	90-100	199.1	1268	61.5,61.5
110	77.67	167.1	259.7	171.6	77.29	175.6	285.0	187.3	100-110	194.0	1462	71,71
120	95.05	152.7	208.8	154.6	93.78	164.0	239.4	173.1	110-120	166.0	1628	79,79
130	105.7	141.0	181.6	143.3	105.0	155.6	207.2	162.3	120-130	138.9	1767	85.7,85.7
140	109.2	133.4	157.2	132.4	107.5	141.2	181.1	147.2	130-140	112.6	1880	91.2,91.2
150	107.4	127.4	140.0	127.2	107.7	136.3	152.5	144.9	140-150	84.67	1965	95.3,95.3
160	103.0	114.5	126.0	117.9	104.4	114.8	136.2	136.1	150-160	58.29	2023	98.1,98.1
170	72.23	93.04	108.4	82.51	72.00	75.36	102.7	111.1	160-170	30.80	2054	99.6,99.6
180	77.32	71.32	58.22	64.32	75.50	71.86	54.10	57.28	170-180	7.539	2061	100,100
DEG	LUMINOUS INTENSITY:cd									UNIT:lm		

Conical surface Flux(90deg): 262.75 lm

%lum = 12.7%
%lamp = 12.7%

Conical surface Flux(120deg): 484.02 lm

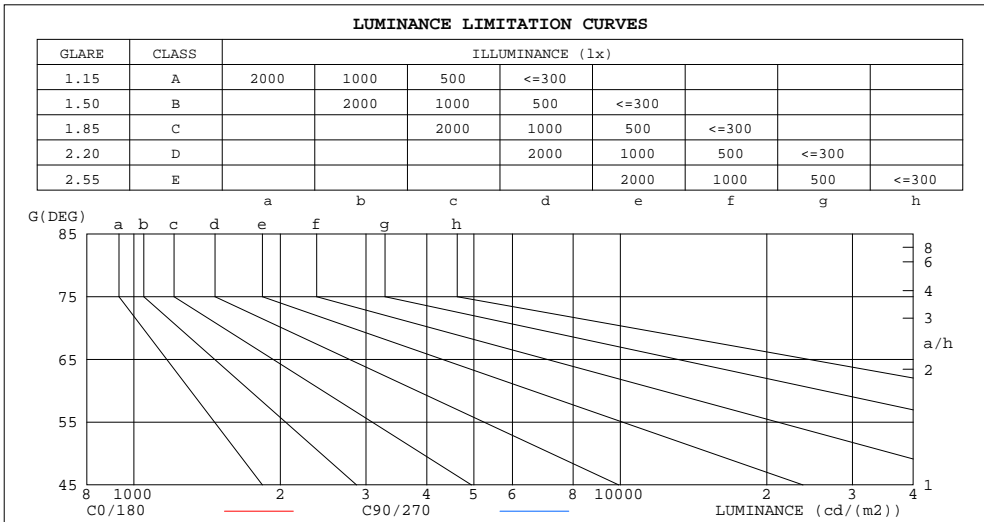
%lum = 23.5%
%lamp = 23.5%

C Range: 0 - 360DEG
C Interval: 22.5DEG
Test Speed: HIGH
Temperature:25.8DEG
Operators:Carl
Test Date:2022-06-24

γ Range: 0 - 180DEG
γ Interval: 1.0DEG
Test System:EVERFINE GO-R5000_V2 SYSTEM V2.0.351
Humidity:42%
Test Distance:2.526m [K=1.0000]
Remarks:

LUMINANCE LIMITATION CURVES

Test:U:120.1V I:0.2114A P:24.93W PF:0.9823 Lamp Flux:2061.17x1 lm		
NAME: ASD-LWS27-24D24CC 5000K	TYPE:N/A	WEIGHT:N/A
SPEC.:N/A	DIM.: N/A	SERIAL No.:N/A
MFR.: ASD Lighting corp	SUR.:N/A	Shielding Angle:N/A



LUMINANCE cd/(m2)		
G (DEG)	C0/180	C90/270
85	580537	2607201
80	341278	1362845
75	246985	913357
70	194560	644212
65	165743	473843
60	147750	371874
55	134444	309505
50	123375	264460
45	114305	229344

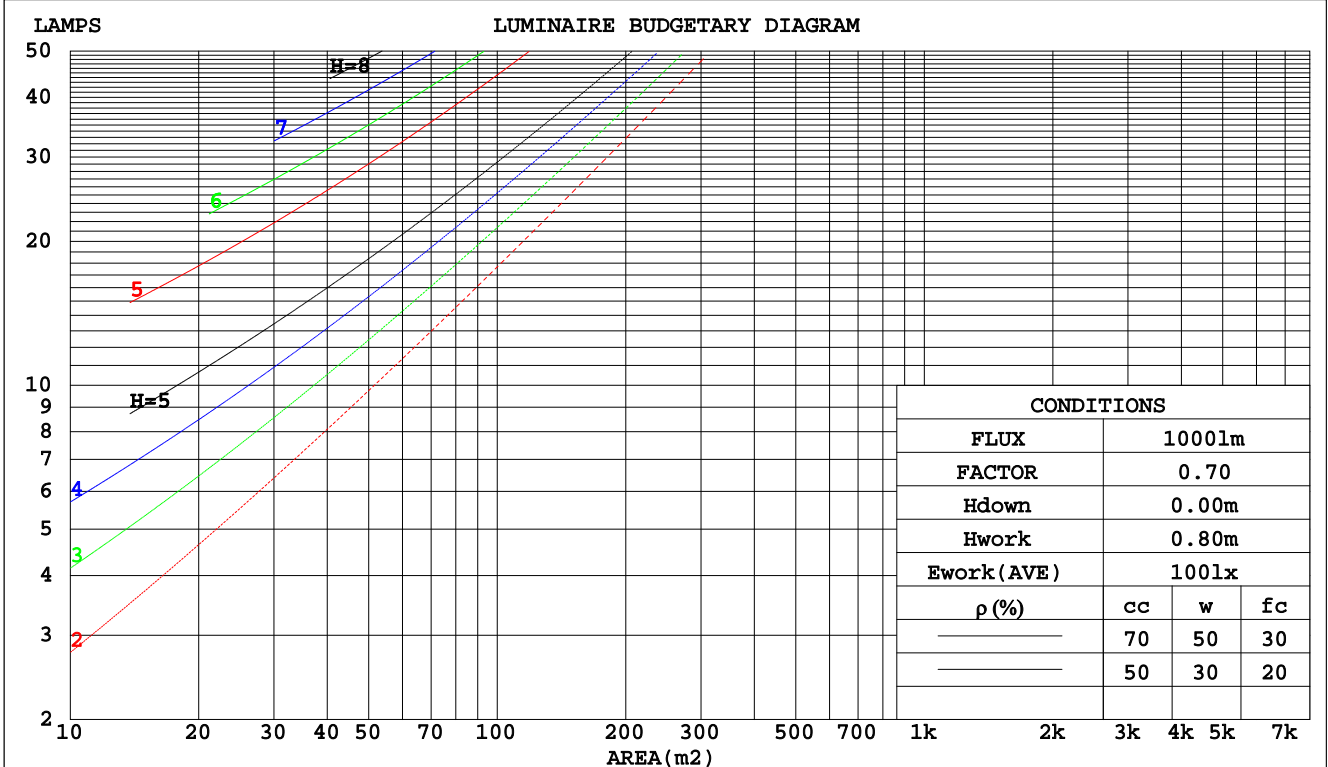
C Range: 0 - 360DEG
 C Interval: 22.5DEG
 Test Speed: HIGH
 Temperature:25.8DEG
 Operators:Carl
 Test Date:2022-06-24

γ Range: 0 - 180DEG
 γ Interval: 1.0DEG
 Test System:EVERFINE GO-R5000_V2 SYSTEM V2.0.351
 Humidity:42%
 Test Distance:2.526m [K=1.0000]
 Remarks:

CU AND LUMINAIRE BUDGETARY ESTIMATE DIAGRAM

Test:U:120.1V I:0.2114A P:24.93W PF:0.9823 Lamp Flux:2061.17x1 lm		
NAME: ASD-LWS27-24D24CC 5000K	TYPE:N/A	WEIGHT:N/A
SPEC.:N/A	DIM.: N/A	SERIAL No.:N/A
MFR.: ASD Lighting corp	SUR.:N/A	Shielding Angle:N/A

pcc	80%			70%			50%			30%			10%			0
pw	50%	30%	10%	50%	30%	10%	50%	30%	10%	50%	30%	10%	50%	30%	10%	0
pfc	20%			20%			20%			20%			20%			0
RCR	RCR:Room Cavity Ratio						Coefficients of Utilization(CU)									
0.0	1.08	1.08	1.08	.99	.99	.99	.84	.84	.84	.71	.71	.71	.58	.58	.58	.52
1.0	.87	.81	.76	.80	.75	.70	.66	.63	.59	.54	.51	.49	.43	.41	.39	.33
2.0	.73	.65	.58	.67	.60	.54	.55	.50	.45	.45	.41	.37	.35	.32	.29	.24
3.0	.63	.53	.46	.57	.49	.43	.47	.41	.36	.38	.33	.29	.30	.26	.23	.18
4.0	.54	.45	.38	.50	.41	.35	.41	.34	.29	.33	.28	.24	.26	.22	.18	.14
5.0	.48	.38	.31	.44	.35	.29	.36	.30	.24	.29	.24	.20	.23	.19	.15	.12
6.0	.43	.33	.27	.39	.31	.25	.32	.26	.21	.26	.21	.17	.20	.16	.13	.10
7.0	.38	.29	.23	.35	.27	.21	.29	.22	.18	.24	.18	.14	.18	.14	.11	.08
8.0	.34	.26	.20	.32	.24	.18	.26	.20	.15	.21	.16	.12	.17	.13	.10	.07
9.0	.31	.23	.17	.29	.21	.16	.24	.18	.13	.19	.15	.11	.15	.11	.08	.06
10.0	.28	.21	.15	.26	.19	.14	.22	.16	.12	.18	.13	.10	.14	.10	.07	.05



C Range: 0 - 360DEG
 C Interval: 22.5DEG
 Test Speed: HIGH
 Temperature:25.8DEG
 Operators:Carl
 Test Date:2022-06-24

γ Range: 0 - 180DEG
 γ Interval: 1.0DEG
 Test System:EVERFINE GO-R5000_V2 SYSTEM V2.0.351
 Humidity:42%
 Test Distance:2.526m [K=1.0000]
 Remarks:

WEC AND CCEC

Test:U:120.1V I:0.2114A P:24.93W PF:0.9823 Lamp Flux:2061.17x1 lm		
NAME: ASD-LWS27-24D24CC 5000K	TYPE:N/A	WEIGHT:N/A
SPEC.:N/A	DIM.: N/A	SERIAL No.:N/A
MFR.: ASD Lighting corp	SUR.:N/A	Shielding Angle:N/A

ρcc	80%			70%			50%			30%			10%			0
ρw	50%	30%	10%	50%	30%	10%	50%	30%	10%	50%	30%	10%	50%	30%	10%	0
ρfc	20%			20%			20%			20%			20%			0
RCR	RCR:Room Cavity Ratio						Wall Exitance Coefficients(WEC)									
0.0																
1.0	.418	.238	.075	.396	.226	.072	.355	.204	.065	.317	.183	.059	.283	.164	.053	
2.0	.348	.191	.058	.328	.180	.056	.290	.161	.050	.256	.143	.045	.224	.126	.040	
3.0	.302	.161	.048	.284	.152	.046	.250	.135	.041	.218	.120	.037	.189	.105	.032	
4.0	.269	.140	.041	.252	.132	.039	.221	.117	.035	.191	.103	.031	.164	.089	.027	
5.0	.242	.123	.036	.227	.116	.034	.198	.103	.030	.171	.090	.027	.146	.078	.023	
6.0	.220	.110	.032	.206	.104	.030	.180	.092	.027	.155	.080	.024	.131	.069	.021	
7.0	.202	.100	.028	.189	.094	.027	.165	.083	.024	.142	.073	.021	.120	.062	.018	
8.0	.187	.091	.026	.175	.086	.024	.152	.076	.022	.130	.066	.019	.110	.057	.016	
9.0	.174	.084	.023	.162	.079	.022	.141	.070	.020	.121	.061	.017	.102	.052	.015	
10.0	.162	.078	.022	.152	.073	.020	.132	.065	.018	.113	.056	.016	.095	.048	.014	

ρcc	80%			70%			50%			30%			10%			0
ρw	50%	30%	10%	50%	30%	10%	50%	30%	10%	50%	30%	10%	50%	30%	10%	0
ρfc	20%			20%			20%			20%			20%			0
RCR	RCR:Room Cavity Ratio						Ceiling Cavity Exitance Coefficients(CCEC)									
0.0	.557	.557	.557	.476	.476	.476	.325	.325	.325	.187	.187	.187	.060	.060	.060	
1.0	.557	.525	.495	.477	.450	.426	.326	.310	.295	.188	.179	.172	.060	.058	.055	
2.0	.552	.504	.463	.473	.434	.401	.324	.300	.279	.187	.175	.164	.060	.056	.053	
3.0	.545	.489	.444	.467	.422	.385	.321	.293	.270	.185	.171	.159	.060	.056	.052	
4.0	.537	.477	.431	.461	.412	.375	.317	.287	.264	.183	.168	.156	.059	.055	.051	
5.0	.530	.468	.423	.455	.405	.368	.314	.283	.260	.182	.166	.154	.059	.054	.051	
6.0	.523	.461	.416	.449	.399	.363	.310	.279	.257	.180	.164	.152	.058	.054	.050	
7.0	.516	.455	.412	.444	.394	.359	.307	.276	.254	.178	.163	.151	.058	.053	.050	
8.0	.509	.450	.408	.439	.390	.356	.303	.274	.253	.177	.162	.151	.057	.053	.050	
9.0	.503	.445	.406	.434	.386	.354	.300	.272	.251	.175	.160	.150	.057	.053	.050	
10.0	.498	.441	.404	.429	.383	.352	.298	.270	.250	.174	.159	.149	.056	.052	.050	

C Range: 0 - 360DEG
 C Interval: 22.5DEG
 Test Speed: HIGH
 Temperature:25.8DEG
 Operators:Carl
 Test Date:2022-06-24

γ Range: 0 - 180DEG
 γ Interval: 1.0DEG
 Test System:EVERFINE GO-R5000_V2 SYSTEM V2.0.351
 Humidity:42%
 Test Distance:2.526m [K=1.0000]
 Remarks:

UGR(Unified Glare Rating) Table

Test:U:120.1V I:0.2114A P:24.93W PF:0.9823 Lamp Flux:2061.17x1 lm										
NAME: ASD-LWS27-24D24CC 5000K					TYPE:N/A			WEIGHT:N/A		
SPEC.:N/A					DIM.: N/A			SERIAL No.:N/A		
MFR.: ASD Lighting corp					SUR.:N/A			Shielding Angle:N/A		
ceiling/cavity	0.7	0.7	0.5	0.5	0.3	0.7	0.7	0.5	0.5	0.3
walls	0.5	0.3	0.5	0.3	0.3	0.5	0.3	0.5	0.3	0.3
working plane	0.2	0.2	0.2	0.2	0.2	0.2	0.2	0.2	0.2	0.2
Room dimensions	Viewed crosswise					Viewed endwise				
x = 2H y = 2H	26.6	27.7	27.5	28.6	29.7	30.5	31.7	31.4	32.5	33.7
3H	29.1	30.1	29.9	31.0	32.1	34.5	35.6	35.4	36.5	37.6
4H	30.4	31.4	31.3	32.3	33.5	36.9	37.8	37.7	38.7	39.9
6H	31.9	32.8	32.8	33.8	35.0	39.3	40.2	40.2	41.1	42.3
8H	32.7	33.6	33.6	34.5	35.7	40.5	41.4	41.4	42.3	43.5
12H	33.5	34.4	34.4	35.3	36.5	41.9	42.7	42.8	43.6	44.8
4H 2H	28.6	29.5	29.5	30.4	31.6	31.1	32.1	32.0	33.0	34.2
3H	31.1	31.9	32.0	32.9	34.1	35.3	36.1	36.2	37.1	38.3
4H	32.5	33.3	33.5	34.2	35.5	37.8	38.6	38.7	39.5	40.8
6H	34.0	34.7	35.0	35.7	37.0	40.4	41.1	41.4	42.1	43.3
8H	34.8	35.5	35.8	36.4	37.7	41.8	42.4	42.7	43.4	44.7
12H	35.7	36.3	36.6	37.2	38.5	43.3	43.8	44.2	44.8	46.1
8H 4H	34.3	34.9	35.2	35.9	37.2	38.1	38.8	39.1	39.7	41.0
6H	36.0	36.5	37.0	37.5	38.8	41.0	41.6	42.0	42.6	43.9
8H	36.9	37.4	37.9	38.4	39.7	42.6	43.1	43.6	44.1	45.4
12H	37.8	38.2	38.8	39.3	40.6	44.4	44.8	45.4	45.8	47.1
12H 4H	34.9	35.5	35.9	36.5	37.8	38.1	38.7	39.1	39.7	41.0
6H	36.8	37.3	37.8	38.3	39.6	41.1	41.6	42.1	42.6	43.9
8H	37.9	38.3	38.9	39.3	40.6	42.8	43.2	43.8	44.3	45.6
Variations with the observer position at spacings:										
S = 1.0H	+ 0.1 / - 0.1					+ 0.1 / - 0.1				
1.5H	+ 0.2 / - 0.2					+ 0.2 / - 0.2				
2.0H	+ 0.3 / - 0.4					+ 0.3 / - 0.3				

CIE Pub.117 Corrected 2061 lm Total Lamp Luminous Flux.(8log(F/F0) = 2.5)

C Range: 0 - 360DEG
 C Interval: 22.5DEG
 Test Speed: HIGH
 Temperature:25.8DEG
 Operators:Carl
 Test Date:2022-06-24

γ Range: 0 - 180DEG
 γ Interval: 1.0DEG
 Test System:EVERFINE GO-R5000_V2 SYSTEM V2.0.351
 Humidity:42%
 Test Distance:2.526m [K=1.0000]
 Remarks:

UTILIZATION FACTORS TABLE

Test:U:120.1V I:0.2114A P:24.93W PF:0.9823 Lamp Flux:2061.17x1 lm		
NAME: ASD-LWS27-24D24CC 5000K	TYPE:N/A	WEIGHT:N/A
SPEC.:N/A	DIM.: N/A	SERIAL No.:N/A
MFR.: ASD Lighting corp	SUR.:N/A	Shielding Angle:N/A

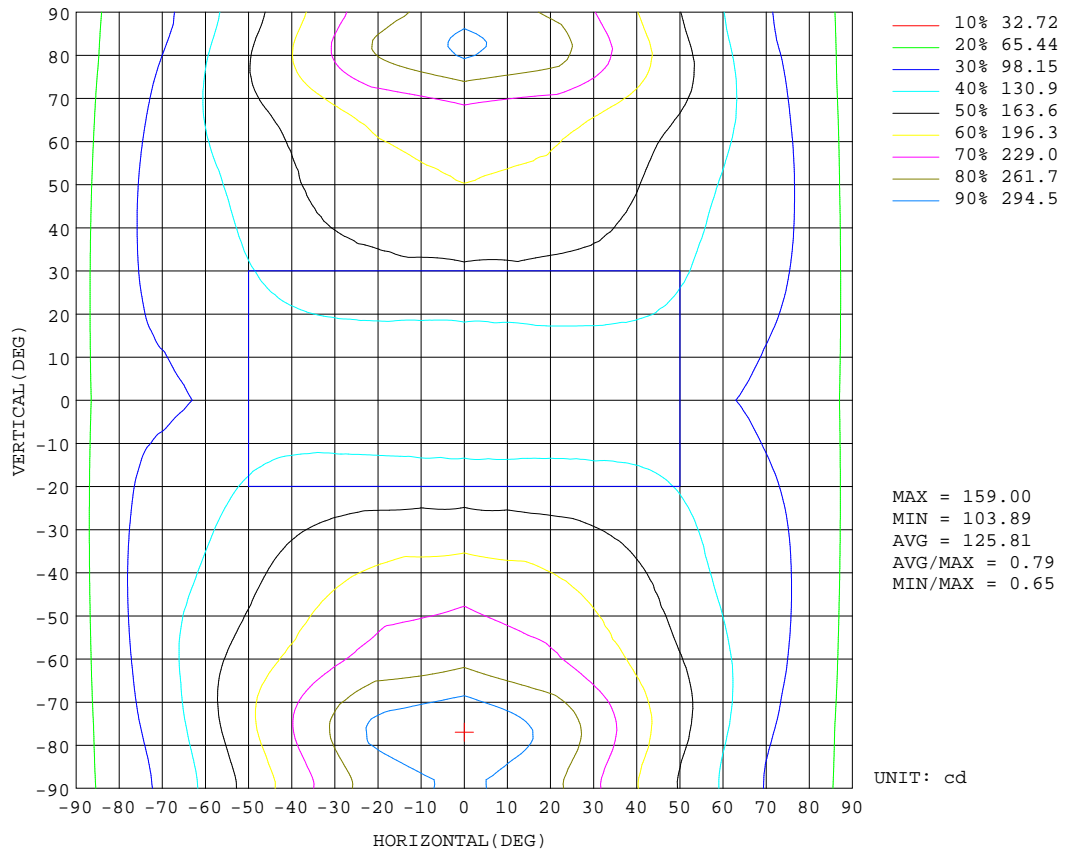
REFLECTANCE										
Ceiling	0.8	0.8	0.8	0.7	0.7	0.7	0.5	0.5	0.5	0
Walls	0.7	0.5	0.3	0.7	0.5	0.3	0.7	0.5	0.3	0
Working plane	0.2	0.2	0.2	0.2	0.2	0.2	0.2	0.2	0.2	0
ROOM INDEX	UTILIZATION FACTORS(PERCENT) $k(RI) \times RCR = 5$									
k = 0.60	36	23	16	34	22	15	31	20	14	7
0.80	45	31	22	42	29	21	37	26	19	10
1.00	52	37	28	48	35	27	42	33	24	13
1.25	59	44	35	54	42	33	47	37	29	16
1.50	64	50	40	59	47	38	51	41	33	18
2.00	72	59	49	66	55	46	57	47	40	22
2.50	77	65	55	71	60	52	60	52	45	25
3.00	81	70	61	75	65	57	63	56	49	28
4.00	86	76	68	79	71	64	67	61	55	32
5.00	90	81	74	83	75	69	70	64	59	34
ROOM INDEX	UF(total)									Direct
According to DIN EN 13032-2 2004			Suspended				SHRNOM = 1.25			

C Range: 0 - 360DEG
 C Interval: 22.5DEG
 Test Speed: HIGH
 Temperature:25.8DEG
 Operators:Carl
 Test Date:2022-06-24

γ Range: 0 - 180DEG
 γ Interval: 1.0DEG
 Test System:EVERFINE GO-R5000_V2 SYSTEM V2.0.351
 Humidity:42%
 Test Distance:2.526m [K=1.0000]
 Remarks:

ISOCANDELA DIAGRAM

Test:U:120.1V I:0.2114A P:24.93W PF:0.9823 Lamp Flux:2061.17x1 lm		
NAME: ASD-LWS27-24D24CC 5000K	TYPE:N/A	WEIGHT:N/A
SPEC.:N/A	DIM.: N/A	SERIAL No.:N/A
MFR.: ASD Lighting corp	SUR.:N/A	Shielding Angle:N/A

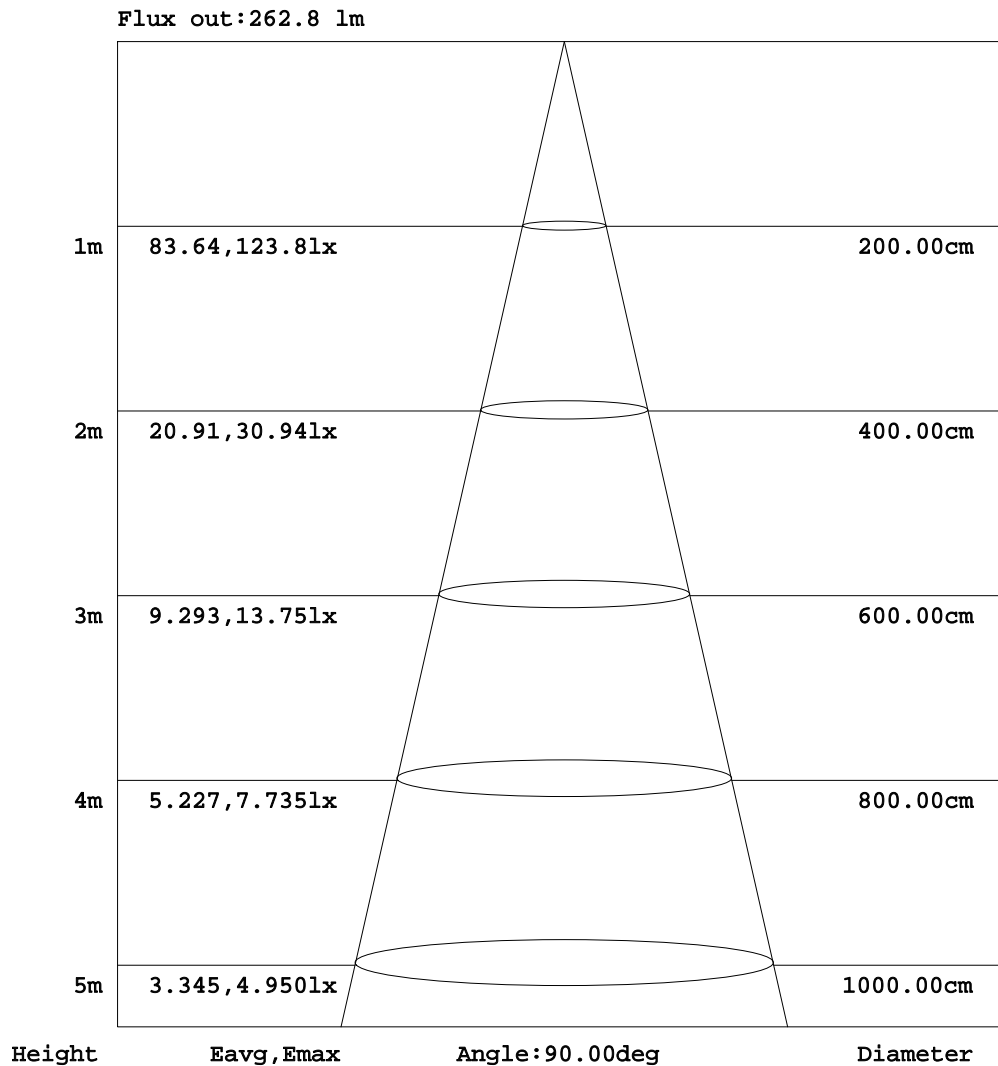


C Range: 0 - 360DEG
 C Interval: 22.5DEG
 Test Speed: HIGH
 Temperature:25.8DEG
 Operators:Carl
 Test Date:2022-06-24

γ Range: 0 - 180DEG
 γ Interval: 1.0DEG
 Test System:EVERFINE GO-R5000_V2 SYSTEM V2.0.351
 Humidity:42%
 Test Distance:2.526m [K=1.0000]
 Remarks:

AAI Figure

Test:U:120.1V I:0.2114A P:24.93W PF:0.9823 Lamp Flux:2061.17x1 lm		
NAME: ASD-LWS27-24D24CC 5000K	TYPE:N/A	WEIGHT:N/A
SPEC.:N/A	DIM.: N/A	SERIAL No.:N/A
MFR.: ASD Lighting corp	SUR.:N/A	Shielding Angle:N/A



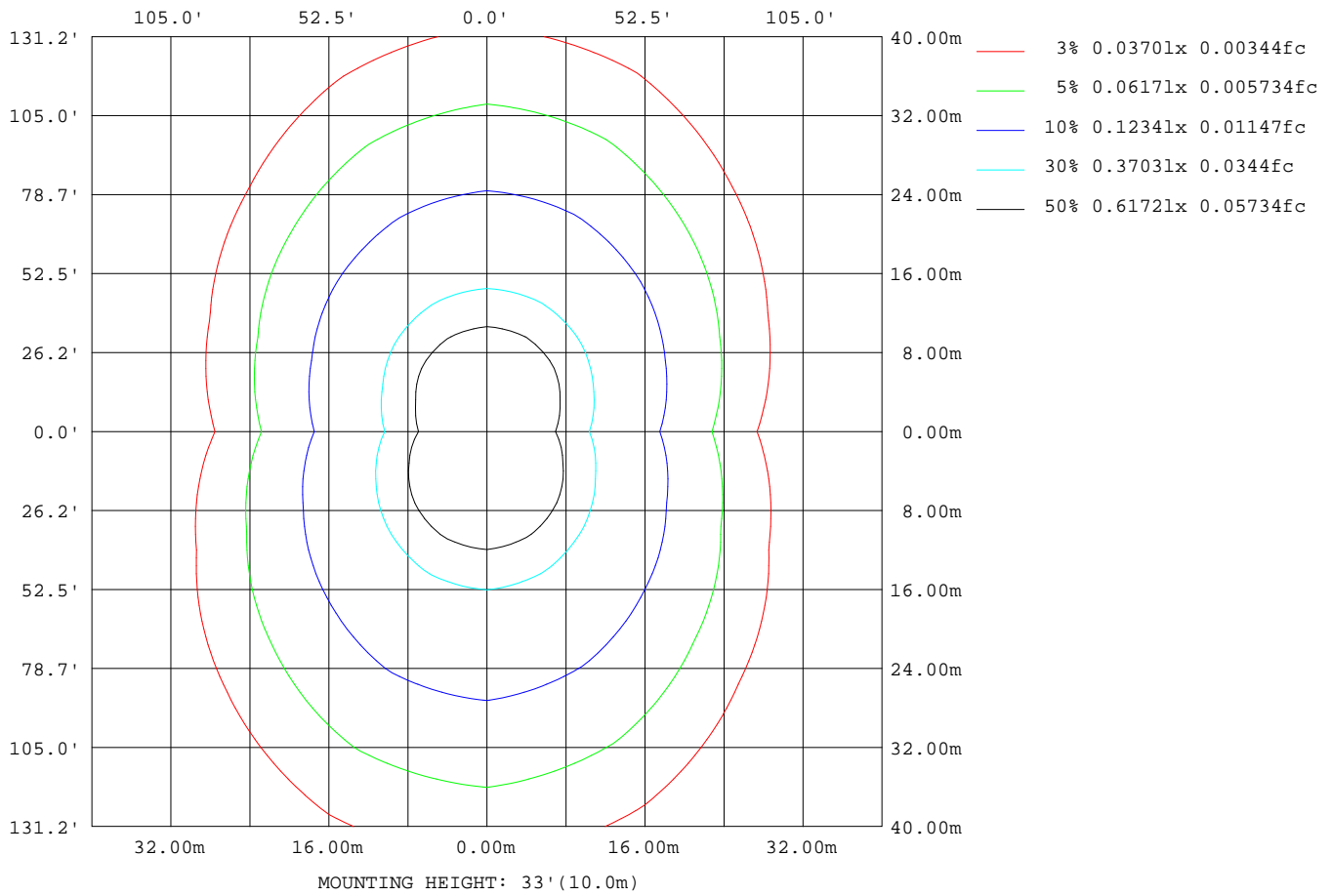
Note:The Curves indicate the illuminated area and the average illumination when the luminaire is at different distance.

C Range: 0 - 360DEG
 C Interval: 22.5DEG
 Test Speed: HIGH
 Temperature:25.8DEG
 Operators:Carl
 Test Date:2022-06-24

γ Range: 0 - 180DEG
 γ Interval: 1.0DEG
 Test System:EVERFINE GO-R5000_V2 SYSTEM V2.0.351
 Humidity:42%
 Test Distance:2.526m [K=1.0000]
 Remarks:

ISOLUX DIAGRAM

Test:U:120.1V I:0.2114A P:24.93W PF:0.9823 Lamp Flux:2061.17x1 lm		
NAME: ASD-LWS27-24D24CC 5000K	TYPE:N/A	WEIGHT:N/A
SPEC.:N/A	DIM.: N/A	SERIAL No.:N/A
MFR.: ASD Lighting corp	SUR.:N/A	Shielding Angle:N/A



C Range: 0 - 360DEG
 C Interval: 22.5DEG
 Test Speed: HIGH
 Temperature:25.8DEG
 Operators:Carl
 Test Date:2022-06-24

γ Range: 0 - 180DEG
 γ Interval: 1.0DEG
 Test System:EVERFINE GO-R5000_V2 SYSTEM V2.0.351
 Humidity:42%
 Test Distance:2.526m [K=1.0000]
 Remarks:

LED Avg.L Report

Test:U:120.1V I:0.2114A P:24.93W PF:0.9823 Lamp Flux:2061.17x1 lm		
NAME: ASD-LWS27-24D24CC 5000K	TYPE:N/A	WEIGHT:N/A
SPEC.:N/A	DIM.: N/A	SERIAL No.:N/A
MFR.: ASD Lighting corp	SUR.:N/A	Shielding Angle:N/A

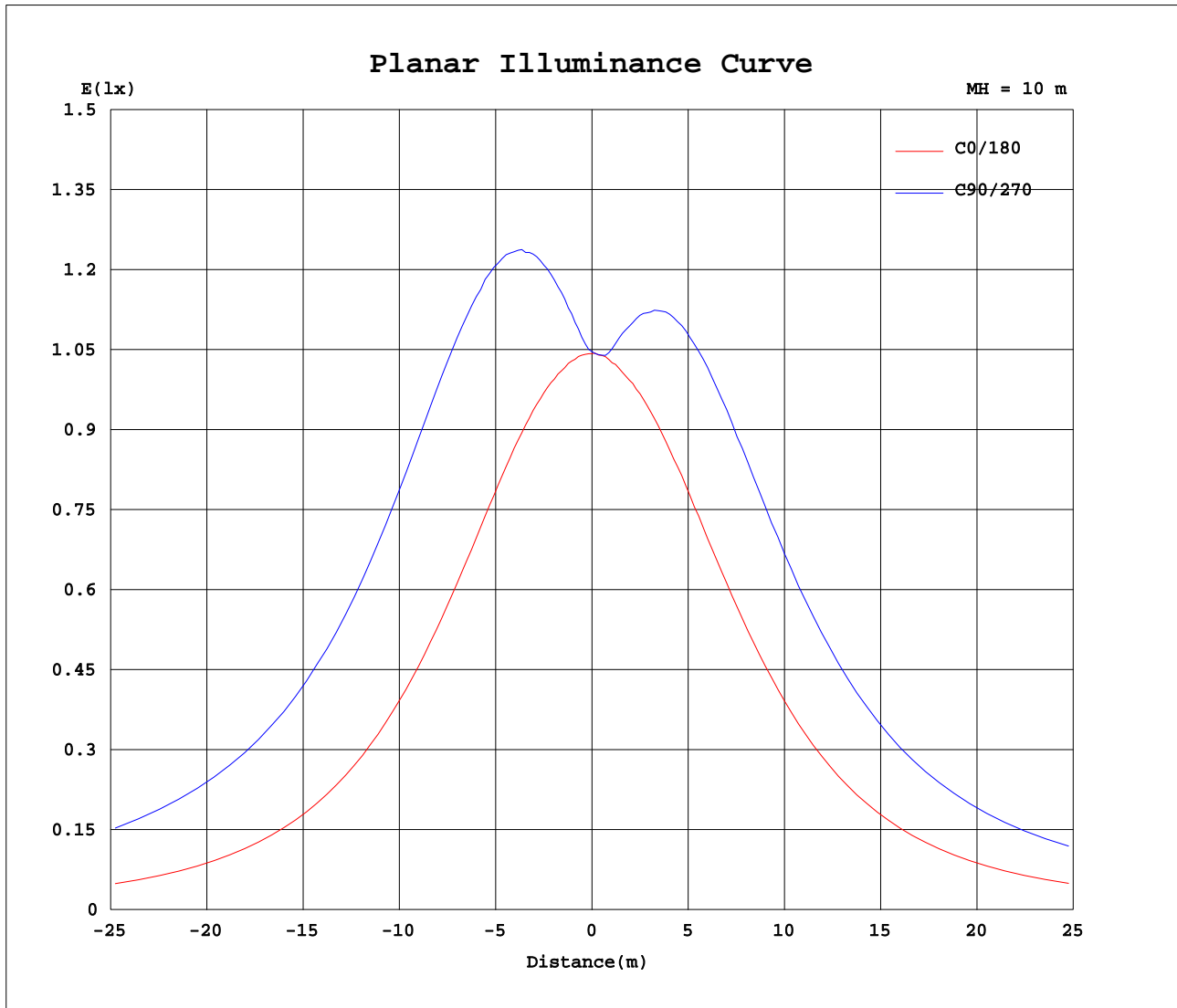
AvgL	cd/m2
L_0~180(65)av	166220
L_0~180(75)av	252133
L_0~180(85)av	583867
L_90~270(65)av	423396
L_90~270(75)av	834744
L_90~270(85)av	2546736
L_45(65)av	308153
L_45(75)av	533795
L_45(85)av	1565186

Standard: GB/T 29293-2012

C Range: 0 - 360DEG
 C Interval: 22.5DEG
 Test Speed: HIGH
 Temperature:25.8DEG
 Operators:Carl
 Test Date:2022-06-24

γ Range: 0 - 180DEG
 γ Interval: 1.0DEG
 Test System:EVERFINE GO-R5000_V2 SYSTEM V2.0.351
 Humidity:42%
 Test Distance:2.526m [K=1.0000]
 Remarks:

Planar Illuminance Curve



C Range: 0 - 360DEG
 C Interval: 22.5DEG
 Test Speed: HIGH
 Temperature: 25.8DEG
 Operators: Carl
 Test Date: 2022-06-24

γ Range: 0 - 180DEG
 γ Interval: 1.0DEG
 Test System: EVERFINE GO-R5000_V2 SYSTEM V2.0.351
 Humidity: 42%
 Test Distance: 2.526m [K=1.0000]
 Remarks:

LUMINOUS DISTRIBUTION INTENSITY DATA

Test:U:120.1V I:0.2114A P:24.93W PF:0.9823 Lamp Flux:2061.17x1 lm		
NAME: ASD-LWS27-24D24CC 5000K	TYPE:N/A	WEIGHT:N/A
SPEC.:N/A	DIM.: N/A	SERIAL No.:N/A
MFR.: ASD Lighting corp	SUR.:N/A	Shielding Angle:N/A

Table--1

UNIT: cd

C(DEG) γ (DEG)	0	22.5	45	67.5	90	112.5	135	157.5	180	202.5	225	247.5	270	292.5	315	337.5			
0	105	105	105	105	105	105	105	105	105	105	105	105	105	105	105	105			
5	105	106	108	111	111	111	109	106	105	104	104	105	106	105	104	104			
10	105	110	116	120	122	120	116	110	105	105	108	112	114	113	109	105			
15	107	114	124	131	135	132	125	115	106	107	115	121	124	122	116	109			
20	108	119	133	144	149	145	134	120	108	111	122	131	135	132	124	113			
25	110	124	143	157	164	158	145	126	110	116	130	142	147	143	133	118			
30	111	129	152	171	179	172	155	131	111	120	139	152	159	154	141	123			
35	112	133	161	185	195	187	165	136	112	124	146	163	170	165	149	127			
40	112	136	169	197	210	200	174	140	112	127	153	172	180	174	157	131			
45	111	138	175	208	222	212	181	144	111	130	158	180	189	182	162	133			
50	109	139	180	216	233	221	187	145	109	131	161	186	196	188	166	135			
55	106	138	183	223	243	230	190	145	106	129	163	190	201	193	168	134			
60	102	135	184	231	255	239	193	142	101	127	163	193	207	197	169	132			
65	96.4	131	185	243	275	253	197	140	96.5	124	163	199	217	204	170	129			
70	91.6	128	189	262	302	276	204	138	93.2	121	165	212	236	218	173	126			
75	88.0	125	194	278	324	293	212	137	91.2	120	171	234	269	244	182	125			
80	81.5	120	193	281	324	295	211	132	83.7	117	178	257	298	267	191	123			
85	69.6	109	184	270	312	282	200	120	70.1	107	176	257	298	267	190	116			
90	56.4	102	178	263	303	274	192	110	54.2	97.6	167	245	283	254	180	108			
95	56.3	108	183	271	313	280	195	114	44.9	102	168	244	281	254	182	113			
100	60.3	112	183	269	313	279	193	118	57.6	110	176	254	292	263	189	119			
105	69.8	110	176	253	293	261	184	116	68.6	111	178	256	295	265	191	120			
110	77.7	107	167	228	260	233	172	112	77.3	110	176	248	285	256	187	118			
115	86.4	106	159	207	229	209	162	111	85.4	111	169	231	263	239	180	119			
120	95.0	108	153	192	209	192	155	111	93.8	112	164	214	239	221	173	119			
125	102	113	147	181	195	181	149	113	101	115	160	202	222	207	168	119			
130	106	115	141	170	182	170	143	116	105	121	156	191	207	195	162	123			
135	108	116	134	159	169	160	136	116	107	125	149	180	195	185	155	126			
140	109	115	133	149	157	149	132	118	108	124	141	169	181	173	147	128			
145	109	113	131	140	144	139	131	117	108	122	138	156	167	161	145	128			
150	107	111	127	137	140	137	127	113	108	114	136	148	152	151	145	129			
155	106	108	122	130	133	130	121	110	107	108	128	140	148	148	140	129			
160	103	103	115	124	126	125	118	103	104	105	115	133	136	141	136	127			
165	88.9	96.0	109	113	118	111	106	88.2	89.9	90.2	97.0	114	127	128	129	114			
170	72.2	88.8	93.0	106	108	92.5	82.5	74.8	72.0	72.3	75.4	90.0	103	115	111	102			
175	65.0	70.2	83.4	86.0	75.9	71.5	63.6	62.9	66.0	66.2	65.2	63.5	71.9	83.2	86.7	85.9			
180	77.3	74.0	71.3	55.0	58.2	53.0	64.3	75.1	75.5	75.5	71.9	69.3	54.1	65.2	57.3	66.7			

C Range: 0 - 360DEG
 C Interval: 22.5DEG
 Test Speed: HIGH
 Temperature:25.8DEG
 Operators:Carl
 Test Date:2022-06-24

γ Range: 0 - 180DEG
 γ Interval: 1.0DEG
 Test System:EVERFINE GO-R5000_V2 SYSTEM V2.0.351
 Humidity:42%
 Test Distance:2.526m [K=1.0000]
 Remarks: