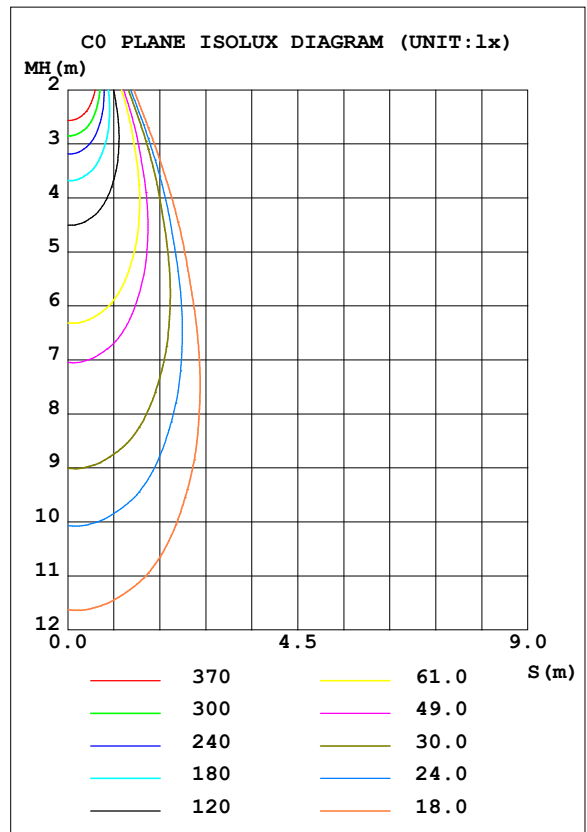
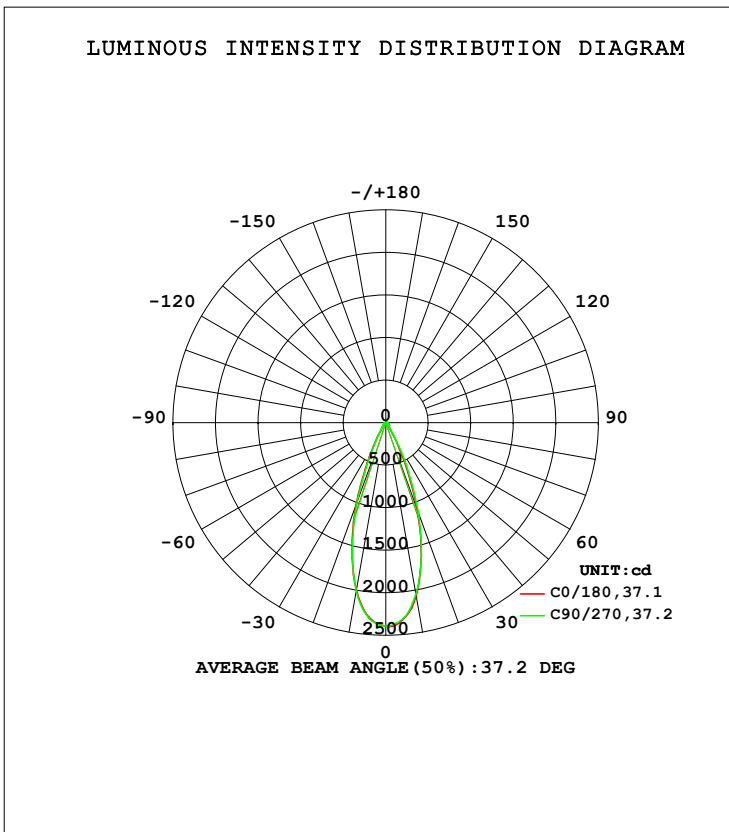


LUMINAIRE PHOTOMETRIC TEST REPORT

Test:U:119.97V I:0.1166A P:13.782W PF:0.9460 Freq:59.98Hz Lamp Flux:1103.8x1 lm		
NAME: ASD-CD-PS-2D15AC-WH	TYPE:	WEIGHT:
SPEC.:4000K 90	DIM.:	SERIAL No.:
MFR.: ASD Lighting Corp	SUR.:	Shielding Angle:

DATA OF LAMP		PHOTOMETRIC DATA Eff: 80.09 lm/W			
MODEL		I _{max} (cd)	2398	S/MH (C0/180)	0.58
NOMINAL POWER (W)	15	LOR (%)	100.0	S/MH (C90/270)	0.57
RATED VOLTAGE (V)	120	TOTAL FLUX (lm)	1103.8	<input type="checkbox"/> UP, DN (C0-180)	0.0, 52.3
NOMINAL FLUX (lm)	1103.8	CIE CLASS	DIRECT	<input type="checkbox"/> UP, DN (C180-360)	0.0, 47.7
LAMPS INSIDE	1	<input type="checkbox"/> up (%)	0.0	CIBSE SHR NOM	0.50
TEST VOLTAGE (V)	120	<input type="checkbox"/> down (%)	100.0	CIBSE SHR MAX	0.65



C Range: 0 - 360DEG
 C Interval: 22.5DEG
 Test Speed: HIGH
 Temperature: 25.3DEG
 Operators:
 Test Date: 2021-11-26

Range: 0 - 90DEG
 Interval: 1.0DEG
 Test System: EVERFINE GO-SPEX500_V1 SYSTEM V2.00.421
 Humidity: 65.0%
 Test Distance: 3.080m [K=1.0000]
 Remarks:

ZONAL FLUX DIAGRAM

ZONAL FLUX DIAGRAM:

mm	C0	C45	C90	C135	C180	C225	C270	C315	mm	□ zone	□ total	%lum,lamp
10	2067	2075	2045	2004	1995	1999	2011	2022	0- 10	211.5	211.5	19.2,19.2
20	1072	1218	1123	1112	1019	1013	981.4	1079	10- 20	429.7	641.2	58.1,58.1
30	211.8	446.6	270.2	373.0	212.1	290.9	180.8	302.7	20- 30	283.6	924.8	83.8,83.8
40	57.25	80.54	56.84	77.27	57.56	65.89	57.43	68.20	30- 40	80.02	1005	91,91
50	35.64	39.71	36.33	39.94	36.52	40.15	36.27	39.41	40- 50	37.54	1042	94.4,94.4
60	25.73	24.16	25.66	24.26	26.07	24.91	26.44	24.39	50- 60	27.81	1070	97,97
70	15.37	14.96	15.25	14.93	15.64	15.66	16.09	15.28	60- 70	20.36	1091	98.8,98.8
80	6.362	6.262	5.412	6.232	6.452	6.091	4.924	5.789	70- 80	11.34	1102	99.8,99.8
90	0.0722	0.0435	0.0472	0.0435	0.0679	0.0631	0.0649	0.0631	80- 90	1.944	1104	100,100
100									90-100			
110									100-110			
120									110-120			
130									120-130			
140									130-140			
150									140-150			
160									150-160			
170									160-170			
180									170-180			
DEG	LUMINOUS INTENSITY:cd									UNIT:lm		

C Range: 0 - 360DEG
 C Interval: 22.5DEG
 Test Speed: HIGH
 Temperature:25.3DEG
 Operators:
 Test Date:2021-11-26

□ Range: 0 - 90DEG
 □ Interval: 1.0DEG
 Test System:EVERFINE GO-SPEX500_V1 SYSTEM V2.00.421
 Humidity:65.0%
 Test Distance:3.080m [K=1.0000]
 Remarks:

LUMINANCE LIMITATION CURVES

Test:U:119.97V I:0.1166A P:13.782W PF:0.9460 Freq:59.98Hz Lamp Flux:1103.8x1 lm		
NAME: ASD-CD-PS-2D15AC-WH	TYPE:	WEIGHT:
SPEC.:4000K 90	DIM.:	SERIAL No.:
MFR.: ASD Lighting Corp	SUR.:	Shielding Angle:



LUMINANCE cd/(m2)		
G (DEG)	C0/180	C90/270
85	184	8
80	335	280
75	375	363
70	411	400
65	445	435
60	471	461
55	469	461
50	507	507
45	578	573

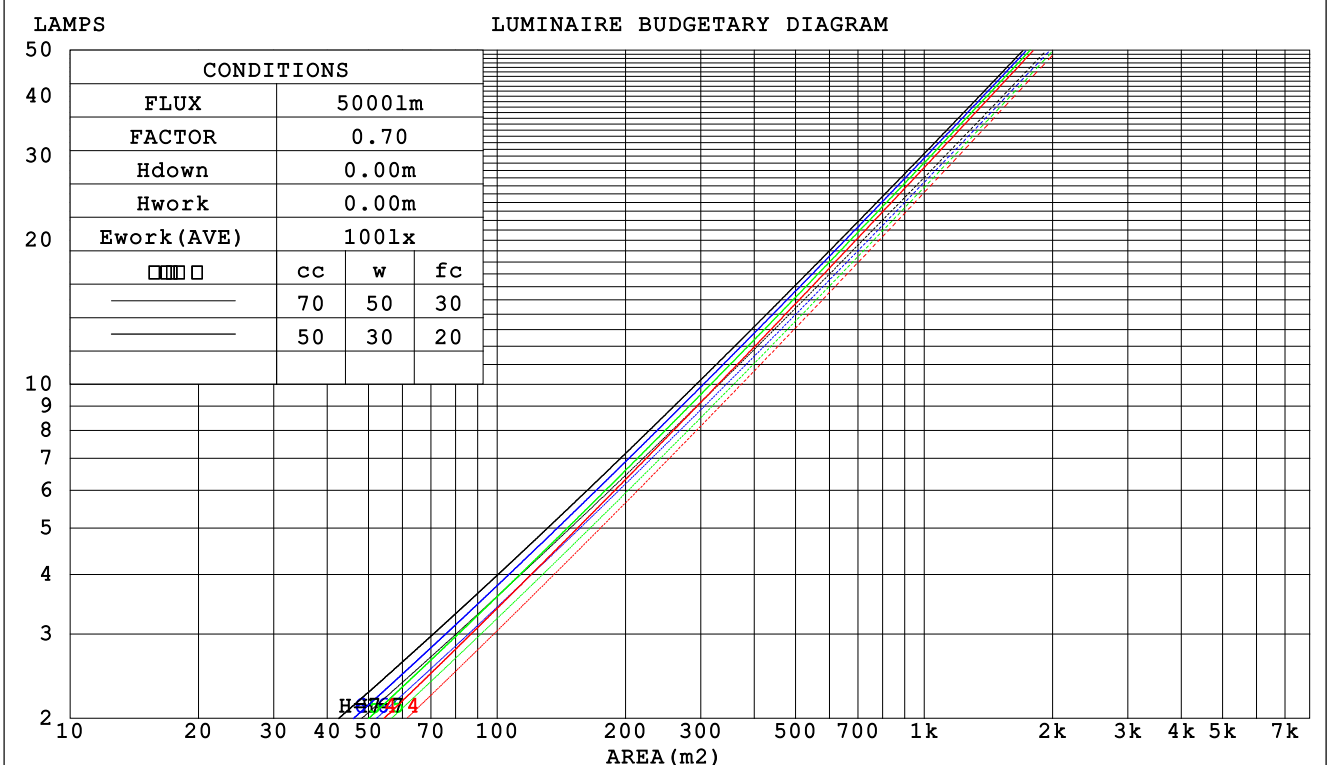
C Range: 0 - 360DEG
 C Interval: 22.5DEG
 Test Speed: HIGH
 Temperature:25.3DEG
 Operators:
 Test Date:2021-11-26

Range: 0 - 90DEG
 Interval: 1.0DEG
 Test System:EVERFINE GO-SPEX500_V1 SYSTEM V2.00.421
 Humidity:65.0%
 Test Distance:3.080m [K=1.0000]
 Remarks:

CU AND LUMINAIRE BUDGETARY ESTIMATE DIAGRAM

Test:U:119.97V I:0.1166A P:13.782W PF:0.9460 Freq:59.98Hz Lamp Flux:1103.8x1 lm		
NAME: ASD-CD-PS-2D15AC-WH	TYPE:	WEIGHT:
SPEC.:4000K 90	DIM.:	SERIAL No.:
MFR.: ASD Lighting Corp	SUR.:	Shielding Angle:

□cc	80%			70%			50%			30%			10%			0
□w	50%	30%	10%	50%	30%	10%	50%	30%	10%	50%	30%	10%	50%	30%	10%	0
□fc	20%			20%			20%			20%			20%			0
RCR	RCR:Room Cavity Ratio						Coefficients of Utilization(CU)									
0.0	1.19	1.19	1.19	1.16	1.16	1.16	1.11	1.11	1.11	1.06	1.06	1.06	1.02	1.02	1.02	.00
1.0	1.11	1.09	1.07	1.09	1.07	1.05	1.05	1.03	1.02	1.01	.00	.99	.98	.97	.96	.94
2.0	1.04	1.00	.97	1.02	.99	.96	.99	.96	.94	.96	.94	.92	.93	.92	.90	.88
3.0	.98	.93	.90	.97	.92	.89	.94	.90	.87	.92	.89	.86	.89	.87	.85	.83
4.0	.92	.87	.84	.91	.87	.83	.89	.85	.82	.87	.84	.81	.85	.83	.80	.79
5.0	.88	.82	.79	.87	.82	.78	.85	.81	.77	.83	.80	.77	.82	.79	.76	.75
6.0	.83	.78	.74	.83	.78	.74	.81	.77	.73	.80	.76	.73	.79	.75	.73	.71
7.0	.80	.74	.70	.79	.74	.70	.78	.73	.70	.77	.73	.70	.75	.72	.69	.68
8.0	.76	.71	.67	.75	.70	.67	.74	.70	.67	.73	.69	.66	.73	.69	.66	.65
9.0	.73	.68	.64	.72	.67	.64	.71	.67	.64	.71	.67	.64	.70	.66	.63	.62
10.0	.70	.65	.61	.69	.65	.61	.69	.64	.61	.68	.64	.61	.67	.64	.61	.60



C Range: 0 - 360DEG
 C Interval: 22.5DEG
 Test Speed: HIGH
 Temperature:25.3DEG
 Operators:
 Test Date:2021-11-26

□ Range: 0 - 90DEG
 □ Interval: 1.0DEG
 Test System:EVERFINE GO-SPEX500_V1 SYSTEM V2.00.421
 Humidity:65.0%
 Test Distance:3.080m [K=1.0000]
 Remarks:

WEC AND CCEC

Test:U:119.97V I:0.1166A P:13.782W PF:0.9460 Freq:59.98Hz Lamp Flux:1103.8x1 lm		
NAME: ASD-CD-PS-2D15AC-WH	TYPE:	WEIGHT:
SPEC.:4000K 90	DIM.:	SERIAL No.:
MFR.: ASD Lighting Corp	SUR.:	Shielding Angle:

<input type="checkbox"/> cc	80%	70%	50%	30%	10%	0
<input type="checkbox"/> w	50% 30% 10%	50% 30% 10%	50% 30% 10%	50% 30% 10%	50% 30% 10%	0
<input type="checkbox"/> fc	20%	20%	20%	20%	20%	0
RCR	RCR:Room Cavity Ratio		Wall Exitance Coefficients (WEC)			
0.0						
1.0	.172 .098 .031	.165 .094 .030	.152 .087 .028	.141 .081 .026	.130 .075 .024	
2.0	.161 .088 .027	.156 .086 .026	.145 .081 .025	.136 .076 .024	.127 .072 .023	
3.0	.151 .081 .024	.147 .079 .024	.138 .075 .023	.129 .071 .022	.122 .067 .021	
4.0	.142 .074 .022	.138 .072 .021	.131 .069 .021	.123 .066 .020	.117 .064 .019	
5.0	.134 .068 .020	.131 .067 .020	.124 .065 .019	.118 .062 .019	.112 .060 .018	
6.0	.127 .064 .018	.124 .063 .018	.118 .061 .018	.113 .059 .017	.108 .057 .017	
7.0	.120 .060 .017	.118 .059 .017	.113 .057 .016	.108 .055 .016	.104 .054 .016	
8.0	.115 .056 .016	.112 .055 .016	.108 .054 .015	.104 .052 .015	.100 .051 .015	
9.0	.109 .053 .015	.107 .052 .015	.103 .051 .014	.100 .050 .014	.096 .049 .014	
10.0	.105 .050 .014	.103 .050 .014	.099 .049 .014	.096 .048 .014	.093 .047 .013	

<input type="checkbox"/> cc	80%	70%	50%	30%	10%	0
<input type="checkbox"/> w	50% 30% 10%	50% 30% 10%	50% 30% 10%	50% 30% 10%	50% 30% 10%	0
<input type="checkbox"/> fc	20%	20%	20%	20%	20%	0
RCR	RCR:Room Cavity Ratio		Ceiling Cavity Exitance Coefficients (CCEC)			
0.0	.190 .190 .190	.163 .163 .163	.111 .111 .111	.064 .064 .064	.020 .020 .020	
1.0	.171 .157 .145	.146 .135 .125	.100 .093 .086	.058 .054 .050	.018 .017 .016	
2.0	.155 .133 .114	.133 .114 .098	.091 .079 .069	.052 .046 .040	.017 .015 .013	
3.0	.142 .113 .091	.121 .098 .079	.083 .068 .055	.048 .040 .033	.015 .013 .011	
4.0	.130 .099 .074	.112 .085 .064	.077 .059 .045	.045 .035 .027	.014 .011 .009	
5.0	.121 .087 .061	.104 .075 .053	.072 .052 .038	.041 .031 .022	.013 .010 .007	
6.0	.113 .077 .052	.097 .067 .045	.067 .047 .032	.039 .028 .019	.013 .009 .006	
7.0	.106 .069 .044	.091 .060 .038	.063 .042 .027	.037 .025 .016	.012 .008 .005	
8.0	.100 .063 .038	.086 .055 .033	.059 .038 .023	.035 .023 .014	.011 .007 .005	
9.0	.094 .058 .033	.081 .050 .029	.056 .035 .020	.033 .021 .012	.011 .007 .004	
10.0	.089 .053 .029	.077 .046 .025	.053 .032 .018	.031 .019 .011	.010 .006 .004	

C Range: 0 - 360DEG
 C Interval: 22.5DEG
 Test Speed: HIGH
 Temperature:25.3DEG
 Operators:
 Test Date:2021-11-26

Range: 0 - 90DEG
 Interval: 1.0DEG
 Test System:EVERFINE GO-SPEX500_V1 SYSTEM V2.00.421
 Humidity:65.0%
 Test Distance:3.080m [K=1.0000]
 Remarks:

UGR(Unified Glare Rating) Table

Test:U:119.97V I:0.1166A P:13.782W PF:0.9460 Freq:59.98Hz Lamp Flux:1103.8x1 lm										
NAME: ASD-CD-PS-2D15AC-WH					TYPE:			WEIGHT:		
SPEC.:4000K 90					DIM.:			SERIAL No.:		
MFR.: ASD Lighting Corp					SUR.:			Shielding Angle:		
ceiling/cavity	0.7	0.7	0.5	0.5	0.3	0.7	0.7	0.5	0.5	0.3
walls	0.5	0.3	0.5	0.3	0.3	0.5	0.3	0.5	0.3	0.3
working plane	0.2	0.2	0.2	0.2	0.2	0.2	0.2	0.2	0.2	0.2
Room dimensions	Viewed crosswise					Viewed endwise				
x = 2H y = 2H	4.7	5.6	4.9	5.7	5.9	5.0	5.8	5.2	6.0	6.2
3H	5.8	6.6	6.1	6.8	7.0	6.0	6.8	6.3	7.0	7.2
4H	6.3	7.1	6.6	7.3	7.5	6.4	7.2	6.7	7.4	7.6
6H	6.6	7.4	6.9	7.6	7.8	6.7	7.4	7.0	7.6	7.9
8H	6.7	7.4	7.0	7.6	7.9	6.7	7.4	7.0	7.7	7.9
12H	6.7	7.4	7.0	7.6	7.9	6.7	7.3	7.0	7.6	7.9
4H 2H	5.1	5.9	5.4	6.1	6.3	5.4	6.1	5.6	6.3	6.5
3H	6.5	7.1	6.8	7.4	7.6	6.6	7.2	6.9	7.5	7.8
4H	7.0	7.6	7.4	7.9	8.2	7.1	7.7	7.5	8.0	8.3
6H	7.5	8.0	7.9	8.4	8.7	7.5	8.0	7.9	8.4	8.7
8H	7.6	8.1	8.0	8.4	8.8	7.5	8.0	7.9	8.4	8.7
12H	7.6	8.1	8.0	8.5	8.8	7.5	7.9	7.9	8.3	8.7
8H 4H	7.2	7.7	7.6	8.1	8.4	7.3	7.8	7.7	8.1	8.5
6H	7.8	8.2	8.2	8.6	9.0	7.8	8.2	8.2	8.6	9.0
8H	8.0	8.3	8.4	8.8	9.2	7.8	8.2	8.3	8.6	9.1
12H	8.1	8.4	8.5	8.8	9.3	7.8	8.1	8.3	8.5	9.0
12H 4H	7.2	7.7	7.6	8.0	8.4	7.3	7.7	7.7	8.1	8.5
6H	7.8	8.2	8.3	8.6	9.0	7.8	8.2	8.2	8.6	9.0
8H	8.0	8.3	8.5	8.8	9.2	7.9	8.2	8.3	8.6	9.1
Variations with the observer position at spacings:										
S = 1.0H	+ 0.3 / - 0.4					+ 0.3 / - 0.5				
1.5H	+ 0.3 / - 0.4					+ 0.4 / - 0.4				
2.0H	+ 0.3 / - 0.3					+ 0.3 / - 0.4				

CIE Pub.117, 1104 lm Total Lamp Luminous Flux Correct (8log(F/F0) = 0.3)
 Area: 0.111111 m2

C Range: 0 - 360DEG
 C Interval: 22.5DEG
 Test Speed: HIGH
 Temperature:25.3DEG
 Operators:
 Test Date:2021-11-26

Range: 0 - 90DEG
 Interval: 1.0DEG
 Test System:EVERFINE GO-SPEX500_V1 SYSTEM V2.00.421
 Humidity:65.0%
 Test Distance:3.080m [K=1.0000]
 Remarks:

UTILIZATION FACTORS TABLE

Test:U:119.97V I:0.1166A P:13.782W PF:0.9460 Freq:59.98Hz Lamp Flux:1103.8x1 lm		
NAME: ASD-CD-PS-2D15AC-WH	TYPE:	WEIGHT:
SPEC.:4000K 90	DIM.:	SERIAL No.:
MFR.: ASD Lighting Corp	SUR.:	Shielding Angle:

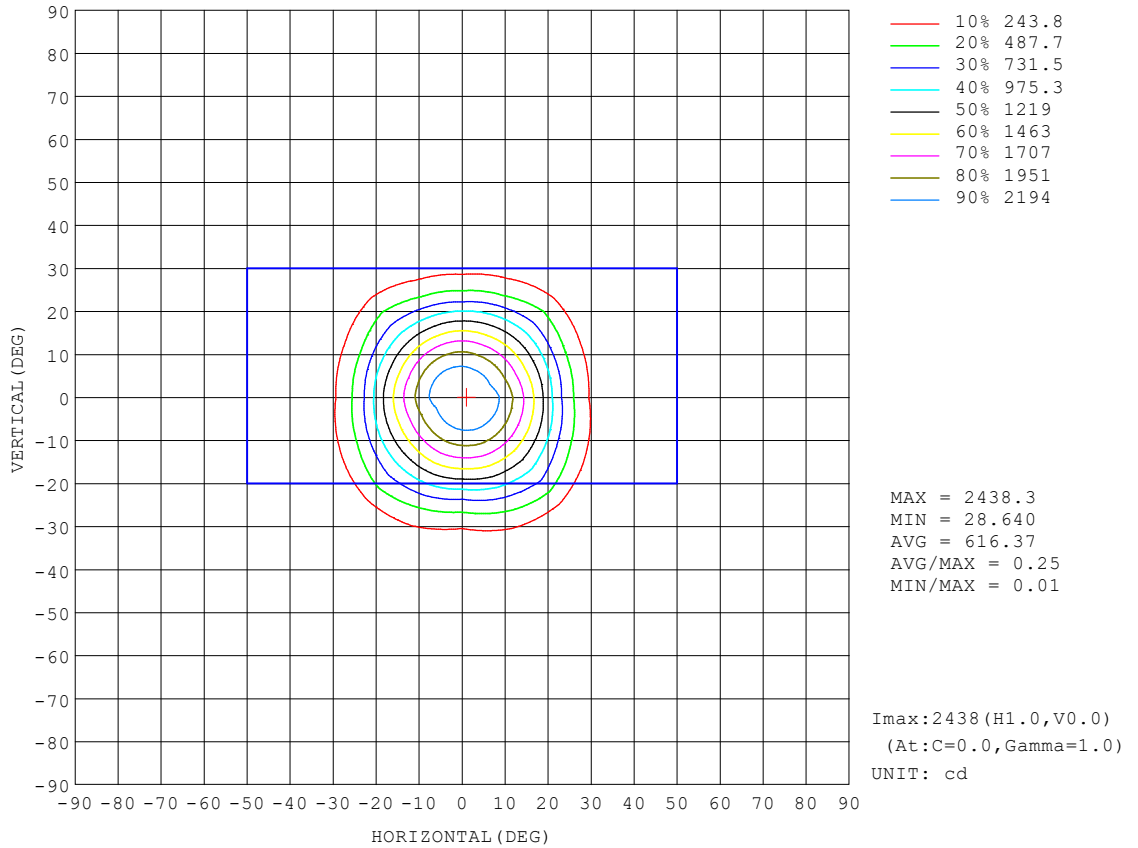
REFLECTANCE										
Ceiling	0.8	0.8	0.8	0.7	0.7	0.7	0.5	0.5	0.5	0
Walls	0.7	0.5	0.3	0.7	0.5	0.3	0.7	0.5	0.3	0
Working plane	0.2	0.2	0.2	0.2	0.2	0.2	0.2	0.2	0.2	0
ROOM INDEX	UTILIZATION FACTORS (PERCENT) $k(RI) \times RCR = 5$									
k = 0.60	86	79	76	86	79	75	85	79	75	72
0.80	93	87	83	93	87	83	92	86	83	79
1.00	98	92	88	97	92	88	95	92	87	83
1.25	102	97	93	101	96	92	99	95	92	87
1.50	105	100	96	104	99	96	101	98	95	90
2.00	108	103	100	106	102	99	103	100	98	92
2.50	110	105	102	108	104	101	105	102	100	93
3.00	111	108	105	109	106	104	106	103	101	95
4.00	113	110	108	111	109	107	108	106	104	97
5.00	115	112	110	113	110	109	109	107	106	98
ROOM INDEX	UF(total)									Direct
According to DIN EN 13032-2 2004			Suspended				SHRNOM = 1.25			

C Range: 0 - 360DEG
 C Interval: 22.5DEG
 Test Speed: HIGH
 Temperature:25.3DEG
 Operators:
 Test Date:2021-11-26

Range: 0 - 90DEG
 Interval: 1.0DEG
 Test System:EVERFINE GO-SPEX500_V1 SYSTEM V2.00.421
 Humidity:65.0%
 Test Distance:3.080m [K=1.0000]
 Remarks:

ISOCANDELA DIAGRAM

Test:U:119.97V I:0.1166A P:13.782W PF:0.9460 Freq:59.98Hz Lamp Flux:1103.8x1 lm		
NAME: ASD-CD-PS-2D15AC-WH	TYPE:	WEIGHT:
SPEC.:4000K 90	DIM.:	SERIAL No.:
MFR.: ASD Lighting Corp	SUR.:	Shielding Angle:

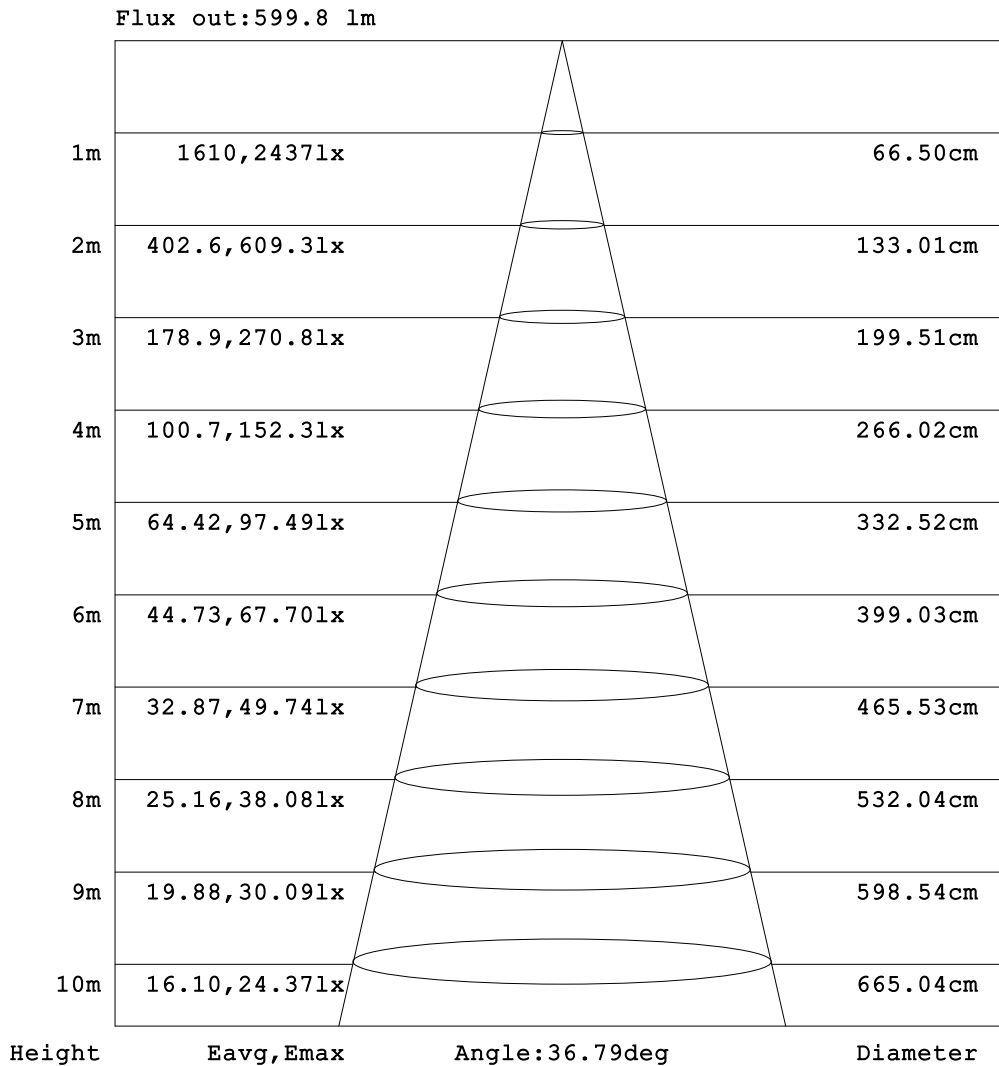


C Range: 0 - 360DEG
 C Interval: 22.5DEG
 Test Speed: HIGH
 Temperature:25.3DEG
 Operators:
 Test Date:2021-11-26

Range: 0 - 90DEG
 Interval: 1.0DEG
 Test System:EVERFINE GO-SPEX500_V1 SYSTEM V2.00.421
 Humidity:65.0%
 Test Distance:3.080m [K=1.0000]
 Remarks:

AAI Figure

Test:U:119.97V I:0.1166A P:13.782W PF:0.9460 Freq:59.98Hz Lamp Flux:1103.8x1 lm		
NAME: ASD-CD-PS-2D15AC-WH	TYPE:	WEIGHT:
SPEC.:4000K 90	DIM.:	SERIAL No.:
MFR.: ASD Lighting Corp	SUR.:	Shielding Angle:



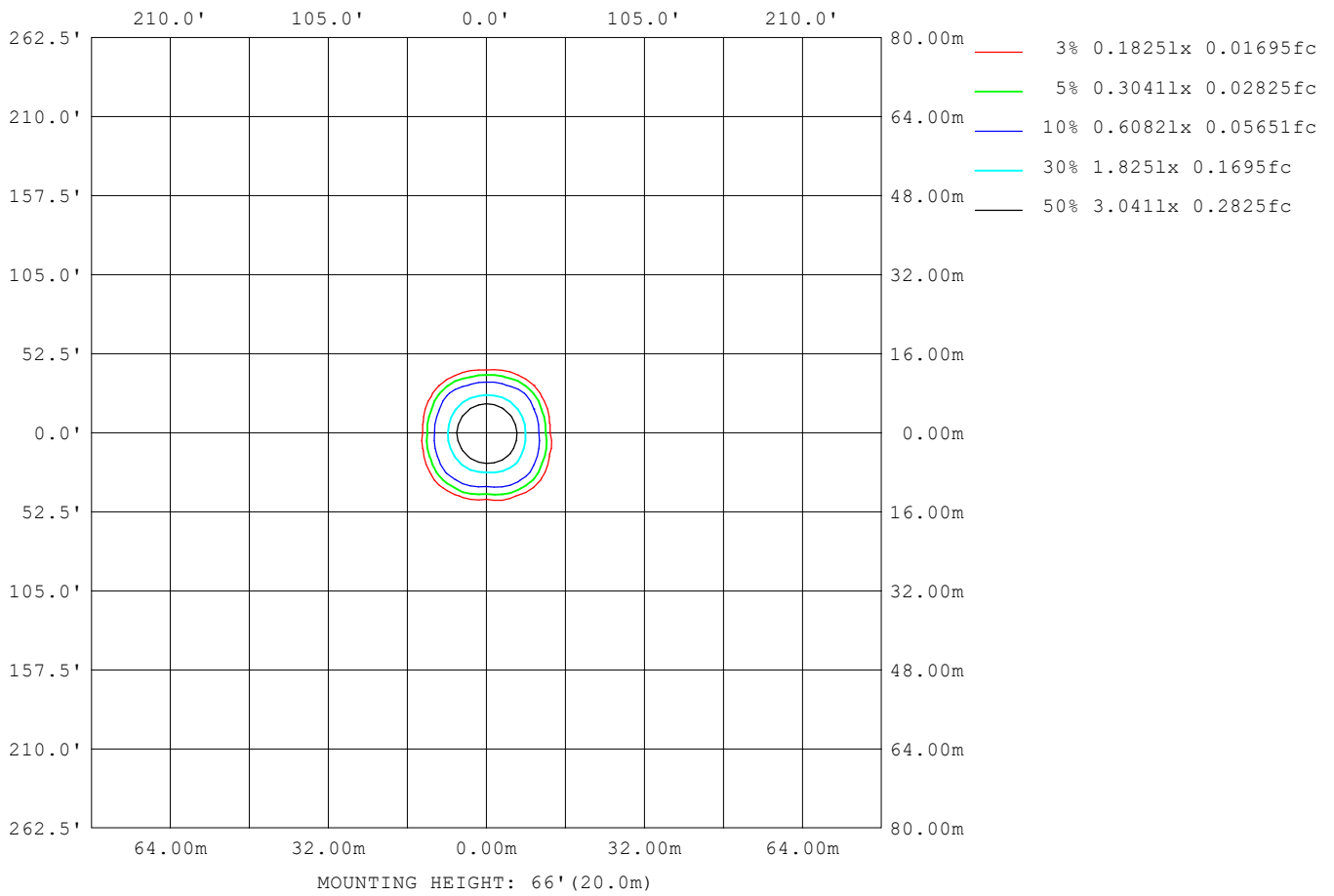
Note:The Curves indicate the illuminated area and the average illumination when the luminaire is at different distance.

C Range: 0 - 360DEG
 C Interval: 22.5DEG
 Test Speed: HIGH
 Temperature:25.3DEG
 Operators:
 Test Date:2021-11-26

Range: 0 - 90DEG
 Interval: 1.0DEG
 Test System:EVERFINE GO-SPEX500_V1 SYSTEM V2.00.421
 Humidity:65.0%
 Test Distance:3.080m [K=1.0000]
 Remarks:

ISOLUX DIAGRAM

Test:U:119.97V I:0.1166A P:13.782W PF:0.9460 Freq:59.98Hz Lamp Flux:1103.8x1 lm		
NAME: ASD-CD-PS-2D15AC-WH	TYPE:	WEIGHT:
SPEC.:4000K 90	DIM.:	SERIAL No.:
MFR.: ASD Lighting Corp	SUR.:	Shielding Angle:



C Range: 0 - 360DEG
 C Interval: 22.5DEG
 Test Speed: HIGH
 Temperature:25.3DEG
 Operators:
 Test Date:2021-11-26

Range: 0 - 90DEG
 Interval: 1.0DEG
 Test System:EVERFINE GO-SPEX500_V1 SYSTEM V2.00.421
 Humidity:65.0%
 Test Distance:3.080m [K=1.0000]
 Remarks:

LED Avg.L Report

Test:U:119.97V I:0.1166A P:13.782W PF:0.9460 Freq:59.98Hz Lamp Flux:1103.8x1 lm		
NAME: ASD-CD-PS-2D15AC-WH	TYPE:	WEIGHT:
SPEC.:4000K 90	DIM.:	SERIAL No.:
MFR.: ASD Lighting Corp	SUR.:	Shielding Angle:

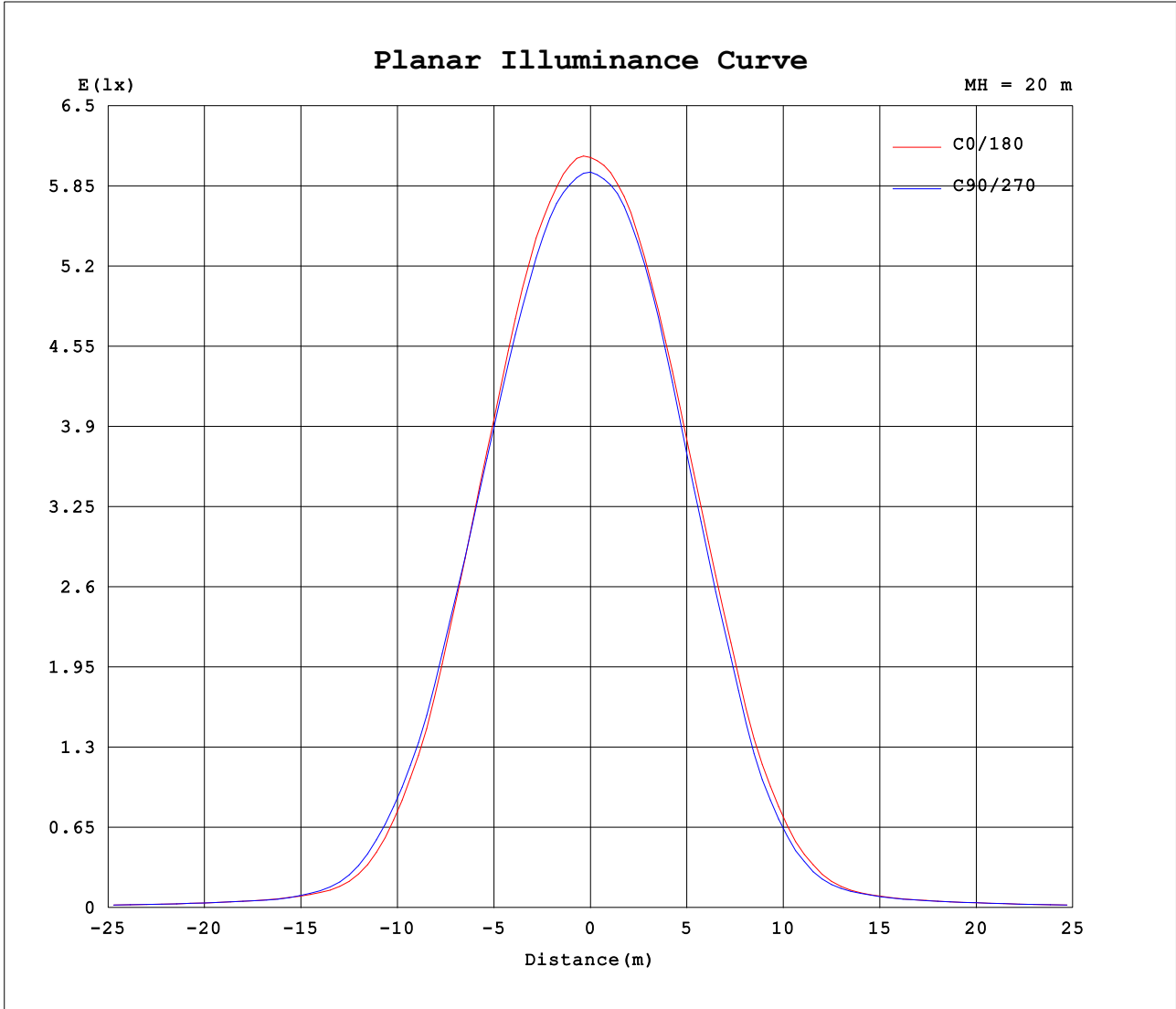
AvgL	cd/m2
L_0~180 (65) av	442
L_0~180 (75) av	372
L_0~180 (85) av	192
L_90~270 (65) av	445
L_90~270 (75) av	376
L_90~270 (85) av	8
L_45 (65) av	421
L_45 (75) av	369
L_45 (85) av	67

Standard: GB/T 29293-2012

C Range: 0 - 360DEG
 C Interval: 22.5DEG
 Test Speed: HIGH
 Temperature:25.3DEG
 Operators:
 Test Date:2021-11-26

Range: 0 - 90DEG
 Interval: 1.0DEG
 Test System:EVERFINE GO-SPEX500_V1 SYSTEM V2.00.421
 Humidity:65.0%
 Test Distance:3.080m [K=1.0000]
 Remarks:

Planar Illuminance Curve



C Range: 0 - 360DEG
 C Interval: 22.5DEG
 Test Speed: HIGH
 Temperature: 25.3DEG
 Operators:
 Test Date: 2021-11-26

Range: 0 - 90DEG
 Interval: 1.0DEG
 Test System: EVERFINE GO-SPEX500_V1 SYSTEM V2.00.421
 Humidity: 65.0%
 Test Distance: 3.080m [K=1.0000]
 Remarks:

LUMINOUS DISTRIBUTION INTENSITY DATA

Test:U:119.97V I:0.1166A P:13.782W PF:0.9460 Freq:59.98Hz Lamp Flux:1103.8x1 lm		
NAME: ASD-CD-PS-2D15AC-WH	TYPE:	WEIGHT:
SPEC.:4000K 90	DIM.:	SERIAL No.:
MFR.: ASD Lighting Corp	SUR.:	Shielding Angle:

Table--1

UNIT: cd

C (DEG) \ □ (DEG)	0	22.5	45	67.5	90	112.5	135	157.5	180	202.5	225	247.5	270	292.5	315	337.5			
0	2393	2393	2393	2393	2393	2393	2393	2393	2393	2393	2393	2393	2393	2393	2393	2393			
5	2324	2330	2324	2320	2317	2308	2296	2296	2294	2295	2307	2306	2307	2305	2310	2313			
10	2067	2073	2075	2067	2045	2029	2004	2003	1995	1990	1999	1996	2011	2001	2022	2048			
15	1614	1640	1660	1655	1622	1613	1572	1559	1540	1506	1508	1501	1517	1522	1559	1591			
20	1072	1150	1218	1191	1123	1133	1112	1081	1019	1008	1013	982	981	1025	1079	1084			
25	555	667	830	736	622	675	716	609	521	537	608	496	471	526	651	578			
30	212	314	447	382	270	337	373	283	212	231	291	206	181	222	303	249			
35	89.3	111	173	135	101	128	149	106	87.2	95.0	109	93.0	85.1	95.5	115	96.1			
40	57.2	62.8	80.5	64.6	56.8	64.7	77.3	62.7	57.6	60.7	65.9	60.7	57.4	62.4	68.2	60.8			
45	44.6	47.4	51.8	47.6	45.2	47.8	51.7	47.5	45.4	47.6	49.9	48.1	45.9	48.2	50.1	46.6			
50	35.6	38.6	39.7	39.0	36.3	39.2	39.9	38.9	36.5	38.8	40.1	38.7	36.3	38.5	39.4	37.8			
55	29.4	30.7	31.0	30.9	29.5	31.1	31.3	31.0	30.0	31.1	31.5	31.2	30.3	31.0	30.7	30.4			
60	25.7	25.7	24.2	25.8	25.7	25.8	24.3	25.7	26.1	26.0	24.9	26.3	26.4	26.0	24.4	25.6			
65	20.6	20.8	19.5	20.8	20.5	20.8	19.5	20.8	20.9	21.0	20.2	21.3	21.3	21.1	19.8	20.6			
70	15.4	15.6	15.0	15.6	15.2	15.5	14.9	15.6	15.6	15.7	15.7	16.1	16.1	15.9	15.3	15.4			
75	10.6	10.7	10.4	10.7	10.5	10.7	10.4	10.7	10.8	10.8	11.0	11.1	11.2	11.0	10.7	10.6			
80	6.36	6.42	6.26	5.83	5.41	5.82	6.23	6.42	6.45	6.49	6.09	5.18	4.92	5.02	5.79	6.33			
85	1.75	2.36	0.94	0.12	0.08	0.12	0.91	2.34	1.96	1.91	0.52	0.07	0.08	0.07	0.23	1.69			
90	0.07	0.05	0.04	0.04	0.05	0.04	0.04	0.05	0.07	0.06	0.06	0.06	0.06	0.06	0.06	0.07			

C Range: 0 - 360DEG
 C Interval: 22.5DEG
 Test Speed: HIGH
 Temperature:25.3DEG
 Operators:
 Test Date:2021-11-26

□ Range: 0 - 90DEG
 □ Interval: 1.0DEG
 Test System:EVERFINE GO-SPEX500_V1 SYSTEM V2.00.421
 Humidity:65.0%
 Test Distance:3.080m [K=1.0000]
 Remarks: