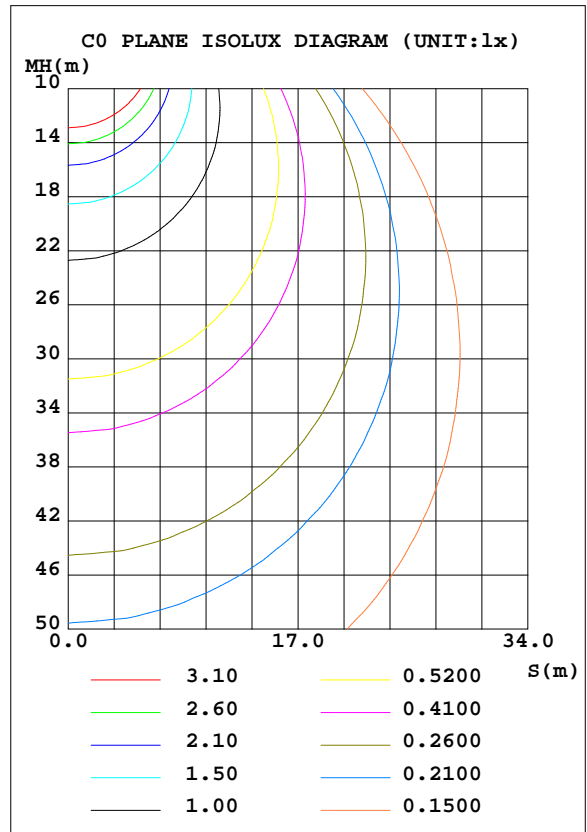
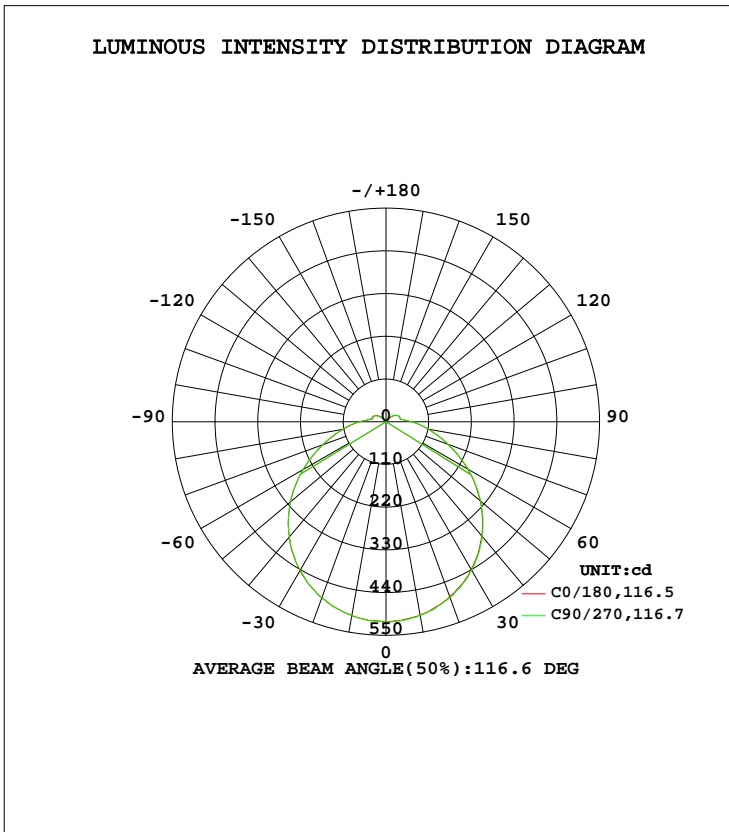


LUMINAIRE PHOTOMETRIC TEST REPORT

Test:U:120.0V I:0.1558A P:18.19W PF:0.9730 Lamp Flux:1815.1x1 lm		
NAME: ASD-LFMDR-MV-12D-20CC-NK(LCL20012D20C)4000K TYPE:N/A		WEIGHT:N/A
SPEC.:N/A	DIM.: N/A	SERIAL No.:N/A
MFR.: ASD Lighting corp	SUR.:N/A	Shielding Angle:N/A

DATA OF LAMP		PHOTOMETRIC DATA Eff: 99.79 lm/W			
MODEL	PSZ2S220624005-10	I _{max} (cd)	516.4	S/MH(C0/180)	1.27
NOMINAL POWER(W)		LOR(%)	100.0	S/MH(C90/270)	1.27
RATED VOLTAGE(V)	120	TOTAL FLUX(lm)	1815.1	η UP, DN(C0-180)	4.8,45.4
NOMINAL FLUX(lm)	1815.1	CIE CLASS	DIRECT	η UP, DN(C180-360)	4.9,44.9
LAMPS INSIDE	1	η up(%)	9.7	CIBSE SHR NOM	1.25
TEST VOLTAGE(V)	120	η down(%)	90.3	CIBSE SHR MAX	1.35



C Range: 0 - 360DEG
 C Interval: 22.5DEG
 Test Speed: HIGH
 Temperature:25.8DEG
 Operators:Carl
 Test Date:2022-06-27

γ Range: 0 - 180DEG
 γ Interval: 1.0DEG
 Test System:EVERFINE GO-R5000_V2 SYSTEM V2.0.351
 Humidity:35%
 Test Distance:2.526m [K=1.0000]
 Remarks:

ZONAL FLUX DIAGRAM

ZONAL FLUX DIAGRAM:

γ	C0	C45	C90	C135	C180	C225	C270	C315	γ	Φ zone	Φ total	%lum, lamp
10	507.1	506.8	507.8	507.0	505.2	505.1	506.4	506.6	0- 10	48.76	48.76	2.69,2.69
20	482.7	482.2	482.9	482.6	479.2	480.6	481.8	481.8	10- 20	140.1	188.9	10.4,10.4
30	442.4	441.3	442.0	442.2	438.6	440.8	440.9	440.9	20- 30	213.8	402.7	22.2,22.2
40	387.7	386.5	387.2	387.6	383.7	384.3	385.0	385.2	30- 40	260.0	662.6	36.5,36.5
50	320.4	320.3	320.4	321.5	317.2	318.0	318.7	317.2	40- 50	273.2	935.8	51.6,51.6
60	246.5	245.3	247.0	248.0	242.3	242.6	244.1	242.6	50- 60	252.8	1189	65.5,65.5
70	172.5	171.8	173.3	175.4	169.3	169.8	171.1	169.3	60- 70	205.6	1394	76.8,76.8
80	112.5	112.2	114.7	116.7	110.2	110.2	110.9	109.7	70- 80	148.5	1543	85,85
90	67.37	67.24	69.56	71.40	65.74	65.71	66.49	64.59	80- 90	96.93	1640	90.3,90.3
100	38.51	39.32	41.28	41.95	39.45	39.27	39.45	38.09	90-100	56.07	1696	93.4,93.4
110	35.59	35.56	37.62	39.01	37.48	36.27	37.11	36.47	100-110	39.48	1735	95.6,95.6
120	31.86	30.21	30.99	33.34	32.73	32.42	33.09	32.42	110-120	34.93	1770	97.5,97.5
130	23.03	19.02	18.84	20.89	22.67	24.56	26.04	24.25	120-130	24.78	1795	98.9,98.9
140	12.55	8.019	7.658	8.531	11.24	13.61	14.25	13.47	130-140	13.00	1808	99.6,99.6
150	4.686	2.939	2.903	3.646	3.547	5.213	5.837	6.017	140-150	4.707	1813	99.9,99.9
160	3.194	2.185	3.310	3.119	2.252	2.671	3.014	2.967	150-160	1.595	1814	100,100
170	2.809	1.443	2.932	2.124	1.563	1.796	1.922	1.969	160-170	0.7218	1815	100,100
180	0.7862	0.8432	0.7763	0.8612	0.8653	0.8650	0.8687	0.8637	170-180	0.1738	1815	100,100
DEG	LUMINOUS INTENSITY:cd									UNIT:lm		

Conical surface Flux(90deg): 799.74 lm

%lum = 44.1%
%lamp = 44.1%

Conical surface Flux(120deg): 1188.6 lm

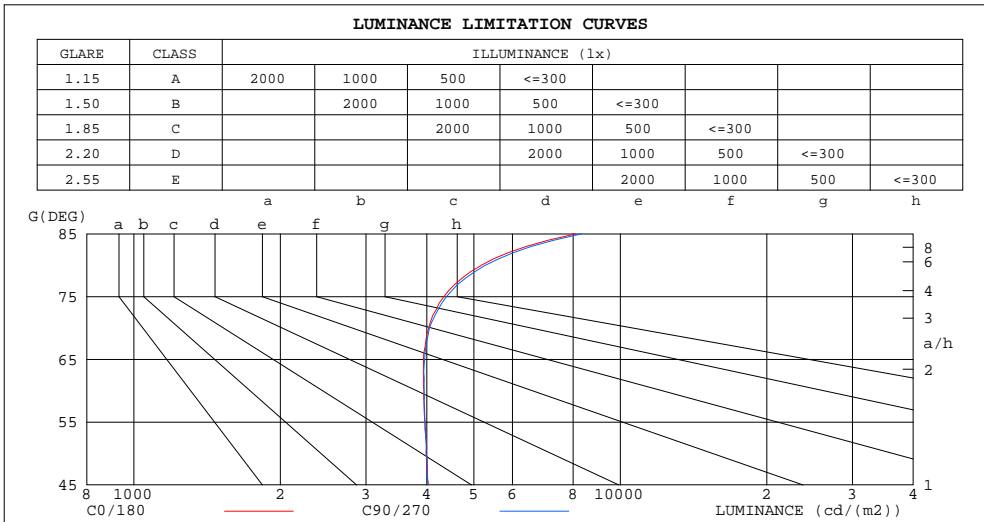
%lum = 65.5%
%lamp = 65.5%

C Range: 0 - 360DEG
C Interval: 22.5DEG
Test Speed: HIGH
Temperature:25.8DEG
Operators:Carl
Test Date:2022-06-27

γ Range: 0 - 180DEG
γ Interval: 1.0DEG
Test System:EVERFINE GO-R5000_V2 SYSTEM V2.0.351
Humidity:35%
Test Distance:2.526m [K=1.0000]
Remarks:

LUMINANCE LIMITATION CURVES

Test:U:120.0V I:0.1558A P:18.19W PF:0.9730 Lamp Flux:1815.1x1 lm		
NAME: ASD-LFMDR-MV-12D-20CC-NK(LCL20012D20C)4000K TYPE:N/A	WEIGHT:N/A	
SPEC.:N/A	DIM.: N/A	SERIAL No.:N/A
MFR.: ASD Lighting corp	SUR.:N/A	Shielding Angle:N/A



LUMINANCE cd/(m2)		
G(DEG)	C0/180	C90/270
85	8108	8333
80	5185	5281
75	4339	4390
70	4037	4051
65	3939	3958
60	3946	3949
55	3961	3970
50	3990	3986
45	4030	4021

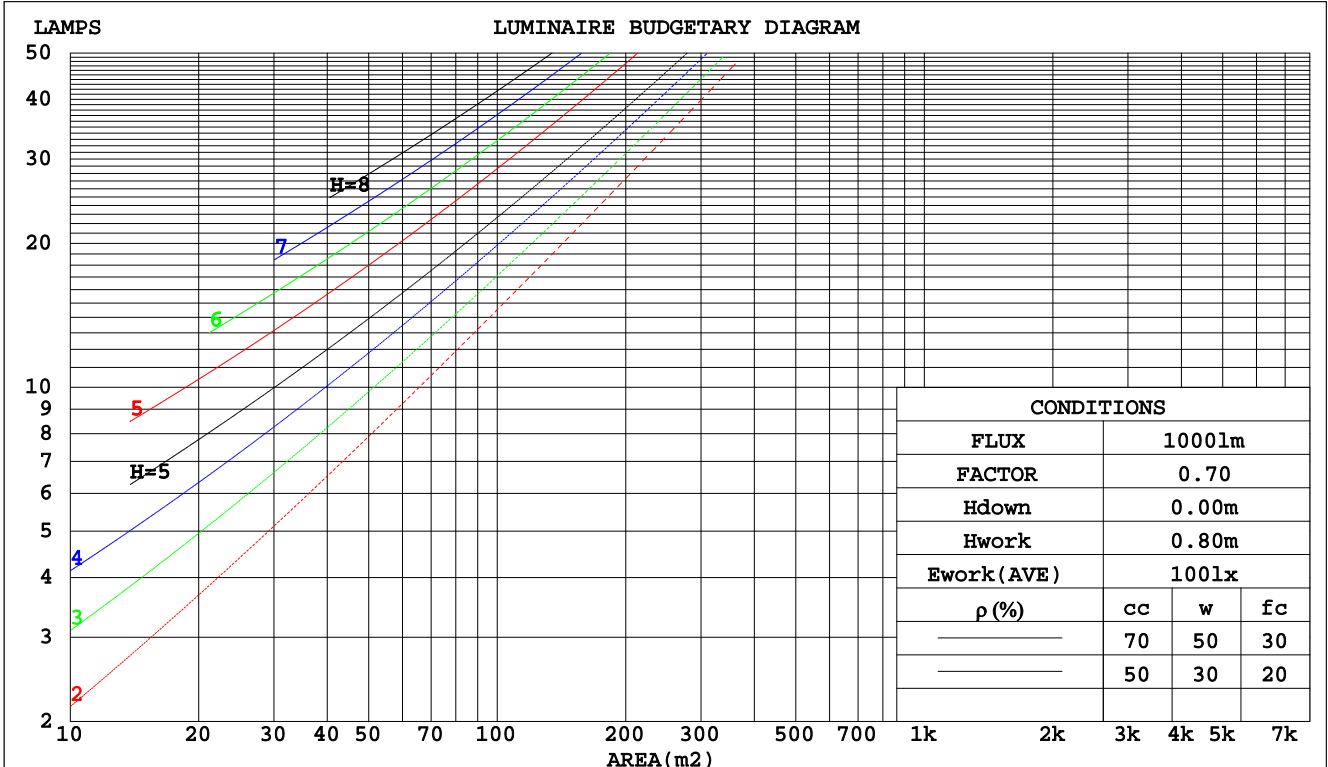
C Range: 0 - 360DEG
 C Interval: 22.5DEG
 Test Speed: HIGH
 Temperature:25.8DEG
 Operators:Carl
 Test Date:2022-06-27

γ Range: 0 - 180DEG
 γ Interval: 1.0DEG
 Test System:EVERFINE GO-R5000_V2 SYSTEM V2.0.351
 Humidity:35%
 Test Distance:2.526m [K=1.0000]
 Remarks:

CU AND LUMINAIRE BUDGETARY ESTIMATE DIAGRAM

Test:U:120.0V I:0.1558A P:18.19W PF:0.9730 Lamp Flux:1815.1x1 lm		
NAME: ASD-LFMDR-MV-12D-20CC-NK(LCL20012D20C)4000K TYPE:N/A		WEIGHT:N/A
SPEC.:N/A	DIM.: N/A	SERIAL No.:N/A
MFR.: ASD Lighting corp	SUR.:N/A	Shielding Angle:N/A

pcc	80%			70%			50%			30%			10%			0
	50%	30%	10%	50%	30%	10%	50%	30%	10%	50%	30%	10%	50%	30%	10%	0
pw																0
pfc	20%			20%			20%			20%			20%			0
RCR	RCR:Room Cavity Ratio						Coefficients of Utilization(CU)									
0.0	1.17	1.17	1.17	1.13	1.13	1.13	1.06	1.06	1.06	.99	.99	.99	.93	.93	.93	.90
1.0	.99	.94	.90	.96	.92	.88	.90	.86	.83	.84	.81	.79	.79	.77	.75	.72
2.0	.86	.78	.72	.83	.76	.71	.78	.72	.67	.73	.68	.64	.69	.65	.62	.59
3.0	.75	.66	.59	.73	.65	.58	.68	.61	.56	.64	.58	.54	.60	.56	.52	.49
4.0	.66	.57	.50	.64	.56	.49	.60	.53	.47	.57	.51	.46	.54	.48	.44	.41
5.0	.59	.50	.43	.57	.49	.42	.54	.46	.41	.51	.44	.39	.48	.43	.38	.36
6.0	.53	.44	.37	.51	.43	.37	.49	.41	.35	.46	.39	.34	.44	.38	.33	.31
7.0	.48	.39	.33	.47	.38	.32	.44	.37	.31	.42	.35	.30	.40	.34	.30	.27
8.0	.44	.35	.29	.42	.34	.29	.40	.33	.28	.38	.32	.27	.36	.31	.26	.24
9.0	.40	.32	.26	.39	.31	.26	.37	.30	.25	.35	.29	.24	.34	.28	.24	.22
10.0	.37	.29	.23	.36	.28	.23	.34	.27	.23	.33	.26	.22	.31	.26	.22	.20



C Range: 0 - 360DEG
 C Interval: 22.5DEG
 Test Speed: HIGH
 Temperature:25.8DEG
 Operators:Carl
 Test Date:2022-06-27

γ Range: 0 - 180DEG
 γ Interval: 1.0DEG
 Test System:EVERFINE GO-R5000_V2 SYSTEM V2.0.351
 Humidity:35%
 Test Distance:2.526m [K=1.0000]
 Remarks:

WEC AND CCEC

Test:U:120.0V I:0.1558A P:18.19W PF:0.9730 Lamp Flux:1815.1x1 lm		
NAME: ASD-LFMDR-MV-12D-20CC-NK(LCL20012D20C)4000K TYPE:N/A		WEIGHT:N/A
SPEC.:N/A	DIM.: N/A	SERIAL No.:N/A
MFR.: ASD Lighting corp	SUR.:N/A	Shielding Angle:N/A

ρcc	80%			70%			50%			30%			10%			0
ρw	50%	30%	10%	50%	30%	10%	50%	30%	10%	50%	30%	10%	50%	30%	10%	0
ρfc	20%			20%			20%			20%			20%			0
RCR	RCR:Room Cavity Ratio						Wall Exitance Coefficients(WEC)									
0.0																
1.0	.353	.201	.064	.343	.195	.062	.324	.186	.059	.306	.177	.057	.290	.168	.054	
2.0	.314	.172	.053	.305	.168	.052	.288	.160	.050	.273	.153	.048	.258	.146	.046	
3.0	.284	.151	.045	.276	.148	.044	.260	.141	.043	.246	.135	.041	.233	.129	.040	
4.0	.258	.134	.039	.251	.131	.039	.237	.126	.038	.224	.120	.036	.212	.115	.035	
5.0	.236	.120	.035	.230	.118	.034	.217	.113	.033	.206	.109	.032	.195	.104	.031	
6.0	.218	.109	.031	.212	.107	.031	.200	.103	.030	.190	.099	.029	.180	.095	.028	
7.0	.201	.100	.028	.196	.098	.028	.186	.094	.027	.176	.090	.026	.168	.087	.026	
8.0	.187	.092	.026	.183	.090	.025	.173	.087	.025	.165	.083	.024	.156	.080	.023	
9.0	.175	.085	.024	.171	.083	.023	.162	.080	.023	.154	.077	.022	.147	.075	.022	
10.0	.164	.079	.022	.160	.077	.022	.152	.075	.021	.145	.072	.020	.138	.070	.020	

ρcc	80%			70%			50%			30%			10%			0
ρw	50%	30%	10%	50%	30%	10%	50%	30%	10%	50%	30%	10%	50%	30%	10%	0
ρfc	20%			20%			20%			20%			20%			0
RCR	RCR:Room Cavity Ratio						Ceiling Cavity Exitance Coefficients(CCEC)									
0.0	.264	.264	.264	.226	.226	.226	.154	.154	.154	.089	.089	.089	.028	.028	.028	
1.0	.258	.230	.205	.220	.197	.177	.151	.136	.122	.087	.079	.071	.028	.025	.023	
2.0	.250	.207	.170	.214	.178	.147	.147	.123	.103	.085	.072	.060	.027	.023	.020	
3.0	.242	.190	.148	.208	.164	.128	.143	.114	.090	.082	.066	.053	.026	.022	.017	
4.0	.234	.177	.133	.201	.153	.115	.138	.106	.081	.080	.062	.048	.026	.020	.016	
5.0	.227	.167	.122	.195	.144	.106	.134	.101	.075	.078	.059	.044	.025	.019	.015	
6.0	.220	.158	.115	.189	.137	.100	.130	.096	.071	.076	.056	.042	.024	.018	.014	
7.0	.213	.152	.109	.183	.131	.095	.126	.092	.067	.073	.054	.040	.024	.018	.013	
8.0	.206	.146	.105	.177	.127	.091	.123	.089	.065	.071	.052	.039	.023	.017	.013	
9.0	.200	.141	.102	.172	.123	.089	.119	.086	.063	.069	.051	.037	.023	.017	.012	
10.0	.194	.137	.099	.167	.119	.086	.116	.084	.061	.068	.049	.037	.022	.016	.012	

C Range: 0 - 360DEG
 C Interval: 22.5DEG
 Test Speed: HIGH
 Temperature:25.8DEG
 Operators:Carl
 Test Date:2022-06-27

γ Range: 0 - 180DEG
 γ Interval: 1.0DEG
 Test System:EVERFINE GO-R5000_V2 SYSTEM V2.0.351
 Humidity:35%
 Test Distance:2.526m [K=1.0000]
 Remarks:

UGR(Unified Glare Rating) Table

Test:U:120.0V I:0.1558A P:18.19W PF:0.9730 Lamp Flux:1815.1x1 lm										
NAME: ASD-LFMDR-MV-12D-20CC-NK(LCL20012D20C)4000K TYPE:N/A									WEIGHT:N/A	
SPEC.:N/A					DIM.: N/A			SERIAL No.:N/A		
MFR.: ASD Lighting corp					SUR.:N/A			Shielding Angle:N/A		
ceiling/cavity	0.7	0.7	0.5	0.5	0.3	0.7	0.7	0.5	0.5	0.3
walls	0.5	0.3	0.5	0.3	0.3	0.5	0.3	0.5	0.3	0.3
working plane	0.2	0.2	0.2	0.2	0.2	0.2	0.2	0.2	0.2	0.2
Room dimensions	Viewed crosswise					Viewed endwise				
x = 2H y = 2H	17.0	18.4	17.4	18.8	19.2	17.0	18.5	17.4	18.8	19.2
3H	18.8	20.1	19.2	20.5	21.0	18.8	20.1	19.2	20.5	21.0
4H	19.7	21.0	20.1	21.4	21.8	19.7	21.0	20.2	21.4	21.9
6H	20.6	21.8	21.1	22.2	22.7	20.7	21.8	21.1	22.3	22.8
8H	21.1	22.2	21.6	22.7	23.2	21.2	22.3	21.6	22.8	23.3
12H	21.7	22.8	22.1	23.2	23.7	21.7	22.8	22.2	23.3	23.8
4H 2H	17.6	18.9	18.1	19.3	19.8	17.7	18.9	18.1	19.3	19.8
3H	19.6	20.8	20.1	21.2	21.7	19.7	20.8	20.2	21.2	21.7
4H	20.7	21.7	21.2	22.2	22.7	20.7	21.7	21.2	22.2	22.8
6H	21.8	22.7	22.3	23.2	23.8	21.9	22.8	22.4	23.3	23.9
8H	22.4	23.2	23.0	23.8	24.4	22.5	23.3	23.0	23.8	24.4
12H	23.1	23.9	23.6	24.4	25.0	23.2	23.9	23.7	24.5	25.1
8H 4H	21.1	22.0	21.7	22.5	23.1	21.1	22.0	21.7	22.5	23.1
6H	22.5	23.2	23.1	23.7	24.4	22.5	23.2	23.1	23.8	24.4
8H	23.2	23.9	23.8	24.5	25.1	23.3	23.9	23.9	24.5	25.2
12H	24.1	24.7	24.7	25.3	26.0	24.2	24.8	24.8	25.4	26.1
12H 4H	21.2	22.0	21.8	22.5	23.1	21.2	22.0	21.8	22.5	23.1
6H	22.6	23.3	23.2	23.9	24.5	22.7	23.3	23.3	23.9	24.6
8H	23.5	24.1	24.1	24.7	25.4	23.6	24.1	24.2	24.7	25.4
Variations with the observer position at spacings:										
S = 1.0H	+ 0.1 / - 0.1					+ 0.1 / - 0.1				
1.5H	+ 0.2 / - 0.3					+ 0.2 / - 0.3				
2.0H	+ 0.2 / - 0.3					+ 0.2 / - 0.3				

CIE Pub.117 Corrected 1815 lm Total Lamp Luminous Flux.(8log(F/F0) = 2.1)

C Range: 0 - 360DEG
 C Interval: 22.5DEG
 Test Speed: HIGH
 Temperature:25.8DEG
 Operators:Carl
 Test Date:2022-06-27

γ Range: 0 - 180DEG
 γ Interval: 1.0DEG
 Test System:EVERFINE GO-R5000_V2 SYSTEM V2.0.351
 Humidity:35%
 Test Distance:2.526m [K=1.0000]
 Remarks:

UTILIZATION FACTORS TABLE

Test:U:120.0V I:0.1558A P:18.19W PF:0.9730 Lamp Flux:1815.1x1 lm		
NAME: ASD-LFMDR-MV-12D-20CC-NK(LCL20012D20C)4000K TYPE:N/A	WEIGHT:N/A	
SPEC.:N/A	DIM.: N/A	SERIAL No.:N/A
MFR.: ASD Lighting corp	SUR.:N/A	Shielding Angle:N/A

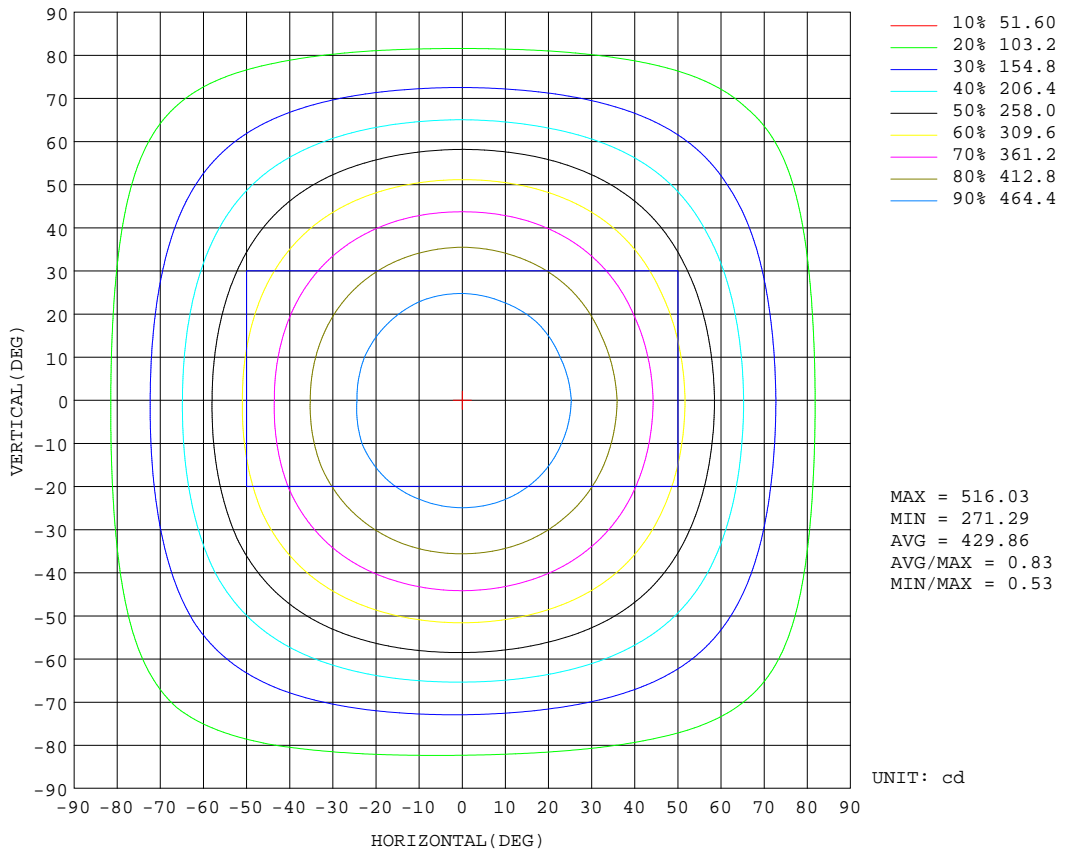
REFLECTANCE										
Ceiling	0.8	0.8	0.8	0.7	0.7	0.7	0.5	0.5	0.5	0
Walls	0.7	0.5	0.3	0.7	0.5	0.3	0.7	0.5	0.3	0
Working plane	0.2	0.2	0.2	0.2	0.2	0.2	0.2	0.2	0.2	0
ROOM INDEX	UTILIZATION FACTORS(PERCENT) $k(RI) \times RCR = 5$									
k = 0.60	52	41	33	52	40	33	50	39	33	26
0.80	62	50	42	61	49	42	58	48	41	34
1.00	70	58	50	69	57	50	66	58	49	41
1.25	77	65	58	75	64	57	72	62	56	47
1.50	82	71	63	80	70	62	76	67	61	52
2.00	89	79	72	87	77	71	82	74	68	59
2.50	93	84	77	91	82	76	85	79	73	62
3.00	97	89	82	94	86	80	88	82	77	66
4.00	101	94	88	98	92	87	92	87	83	71
5.00	104	98	93	101	95	91	94	90	86	74
ROOM INDEX	UF(total)									Direct
According to DIN EN 13032-2 2004			Suspended				SHRNOM = 1.25			

C Range: 0 - 360DEG
 C Interval: 22.5DEG
 Test Speed: HIGH
 Temperature:25.8DEG
 Operators:Carl
 Test Date:2022-06-27

γ Range: 0 - 180DEG
 γ Interval: 1.0DEG
 Test System:EVERFINE GO-R5000_V2 SYSTEM V2.0.351
 Humidity:35%
 Test Distance:2.526m [K=1.0000]
 Remarks:

ISOCANDELA DIAGRAM

Test:U:120.0V I:0.1558A P:18.19W PF:0.9730 Lamp Flux:1815.1x1 lm		
NAME: ASD-LFMDR-MV-12D-20CC-NK(LCL20012D20C)4000K TYPE:N/A	WEIGHT:N/A	
SPEC.:N/A	DIM.: N/A	SERIAL No.:N/A
MFR.: ASD Lighting corp	SUR.:N/A	Shielding Angle:N/A



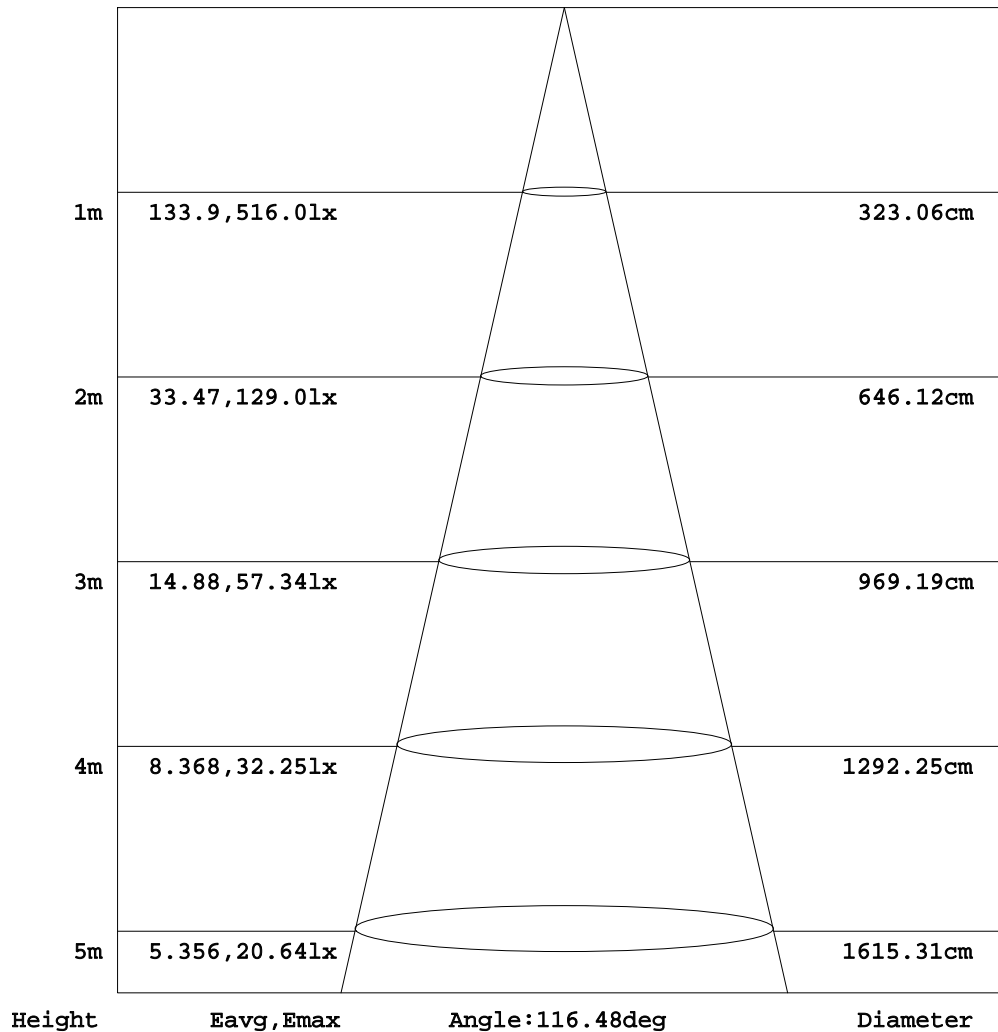
C Range: 0 - 360DEG
 C Interval: 22.5DEG
 Test Speed: HIGH
 Temperature:25.8DEG
 Operators:Carl
 Test Date:2022-06-27

γ Range: 0 - 180DEG
 γ Interval: 1.0DEG
 Test System:EVERFINE GO-R5000_V2 SYSTEM V2.0.351
 Humidity:35%
 Test Distance:2.526m [K=1.0000]
 Remarks:

AAI Figure

Test:U:120.0V I:0.1558A P:18.19W PF:0.9730 Lamp Flux:1815.1x1 lm		
NAME: ASD-LFMDR-MV-12D-20CC-NK(LCL20012D20C)4000K TYPE:N/A	WEIGHT:N/A	
SPEC.:N/A	DIM.: N/A	SERIAL No.:N/A
MFR.: ASD Lighting corp	SUR.:N/A	Shielding Angle:N/A

Flux out:1165 lm



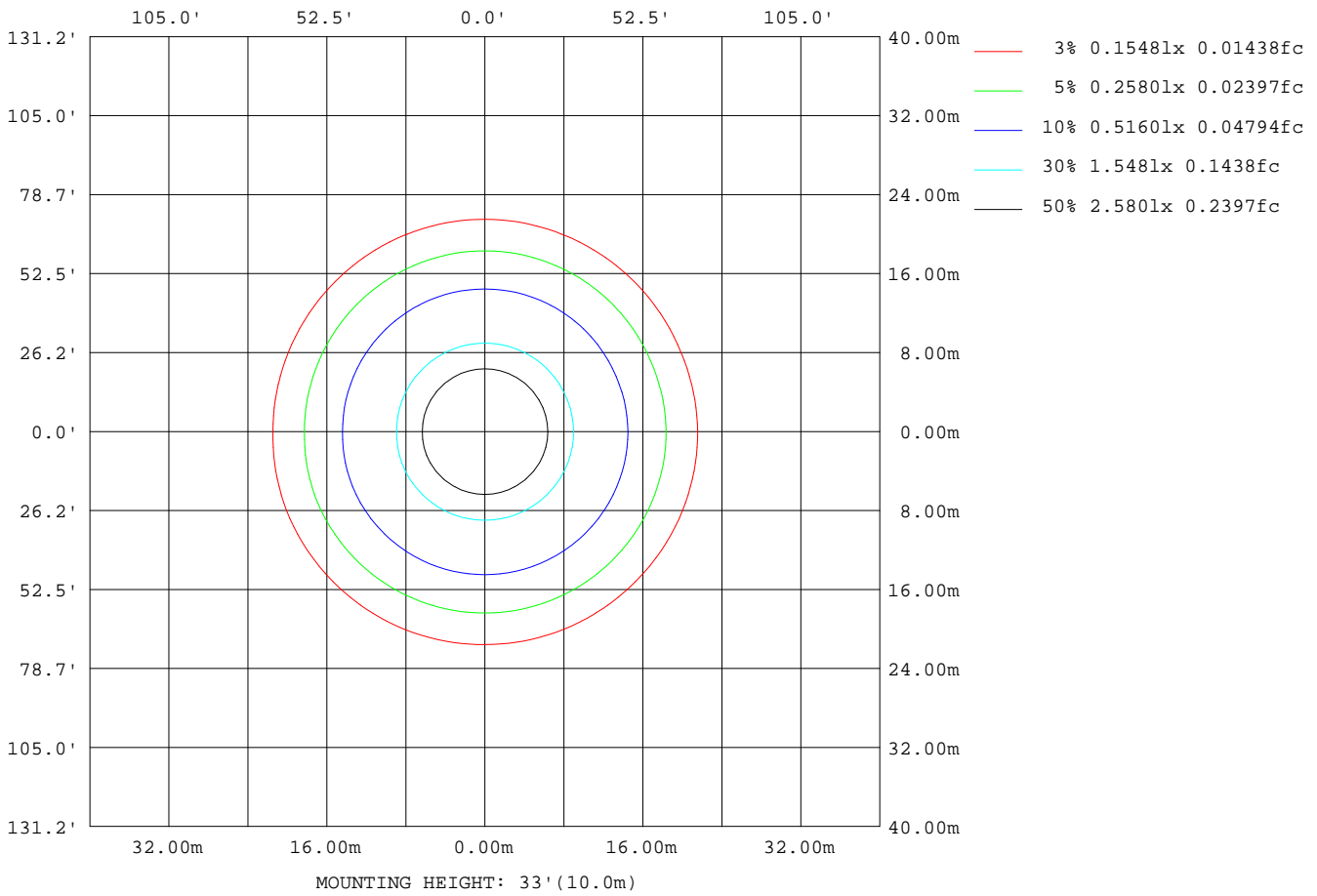
Note:The Curves indicate the illuminated area and the average illumination when the luminaire is at different distance.

C Range: 0 - 360DEG
 C Interval: 22.5DEG
 Test Speed: HIGH
 Temperature:25.8DEG
 Operators:Carl
 Test Date:2022-06-27

γ Range: 0 - 180DEG
 γ Interval: 1.0DEG
 Test System:EVERFINE GO-R5000_V2 SYSTEM V2.0.351
 Humidity:35%
 Test Distance:2.526m [K=1.0000]
 Remarks:

ISOLUX DIAGRAM

Test:U:120.0V I:0.1558A P:18.19W PF:0.9730 Lamp Flux:1815.1x1 lm		
NAME: ASD-LFMDR-MV-12D-20CC-NK(LCL20012D20C)4000K TYPE:N/A		WEIGHT:N/A
SPEC.:N/A	DIM.: N/A	SERIAL No.:N/A
MFR.: ASD Lighting corp	SUR.:N/A	Shielding Angle:N/A



C Range: 0 - 360DEG
 C Interval: 22.5DEG
 Test Speed: HIGH
 Temperature:25.8DEG
 Operators:Carl
 Test Date:2022-06-27

γ Range: 0 - 180DEG
 γ Interval: 1.0DEG
 Test System:EVERFINE GO-R5000_V2 SYSTEM V2.0.351
 Humidity:35%
 Test Distance:2.526m [K=1.0000]
 Remarks:

LED Avg.L Report

Test:U:120.0V I:0.1558A P:18.19W PF:0.9730 Lamp Flux:1815.1x1 lm		
NAME: ASD-LFMDR-MV-12D-20CC-NK(LCL20012D20C)4000K TYPE:N/A	WEIGHT:N/A	
SPEC.:N/A	DIM.: N/A	SERIAL No.:N/A
MFR.: ASD Lighting corp	SUR.:N/A	Shielding Angle:N/A

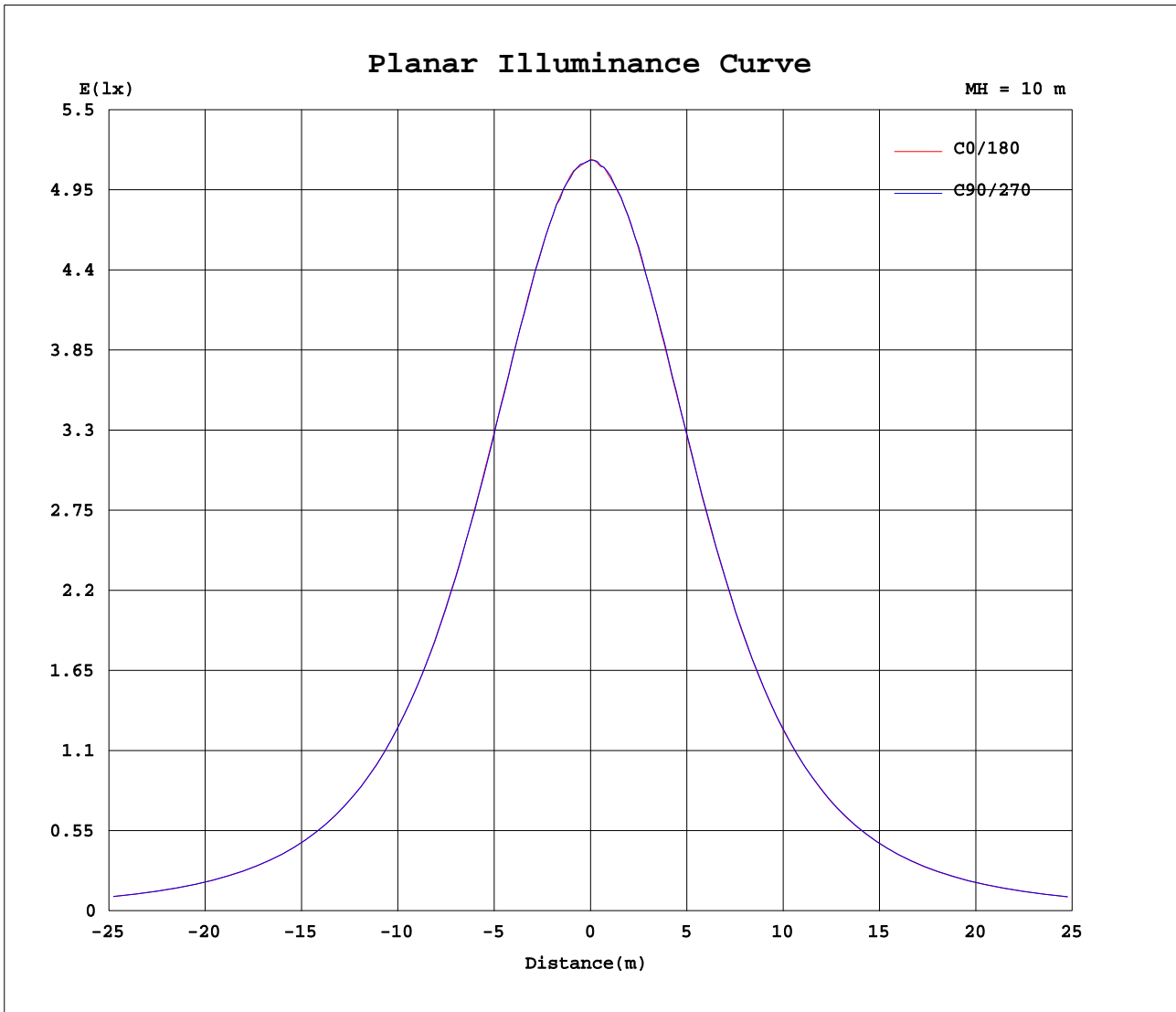
AvgL	cd/m2
L_0~180(65)av	3909
L_0~180(75)av	4296
L_0~180(85)av	8040
L_90~270(65)av	3935
L_90~270(75)av	4345
L_90~270(85)av	8171
L_45(65)av	3917
L_45(75)av	4319
L_45(85)av	8122

Standard: GB/T 29293-2012

C Range: 0 - 360DEG
 C Interval: 22.5DEG
 Test Speed: HIGH
 Temperature:25.8DEG
 Operators:Carl
 Test Date:2022-06-27

γ Range: 0 - 180DEG
 γ Interval: 1.0DEG
 Test System:EVERFINE GO-R5000_V2 SYSTEM V2.0.351
 Humidity:35%
 Test Distance:2.526m [K=1.0000]
 Remarks:

Planar Illuminance Curve



C Range: 0 - 360DEG
 C Interval: 22.5DEG
 Test Speed: HIGH
 Temperature: 25.8DEG
 Operators: Carl
 Test Date: 2022-06-27

γ Range: 0 - 180DEG
 γ Interval: 1.0DEG
 Test System: EVERFINE GO-R5000_V2 SYSTEM V2.0.351
 Humidity: 35%
 Test Distance: 2.526m [K=1.0000]
 Remarks:

LUMINOUS DISTRIBUTION INTENSITY DATA

Test:U:120.0V I:0.1558A P:18.19W PF:0.9730 Lamp Flux:1815.1x1 lm		
NAME: ASD-LFMDR-MV-12D-20CC-NK(LCL20012D20C)4000K TYPE:N/A		WEIGHT:N/A
SPEC.:N/A	DIM.: N/A	SERIAL No.:N/A
MFR.: ASD Lighting corp	SUR.:N/A	Shielding Angle:N/A

Table--1

UNIT: cd

C(DEG) γ (DEG)	0	22.5	45	67.5	90	112.5	135	157.5	180	202.5	225	247.5	270	292.5	315	337.5			
0	515	515	515	515	515	515	515	515	515	515	515	515	515	515	515	515			
5	513	514	511	512	513	514	513	513	512	513	512	512	514	514	514	514			
10	507	507	507	506	508	507	507	507	505	506	505	507	506	507	507	506			
15	497	498	497	497	496	496	497	498	494	496	494	496	497	496	496	496			
20	483	483	482	482	483	483	483	484	479	481	481	481	482	483	482	482			
25	465	465	464	464	464	465	465	466	462	464	462	464	463	463	463	464			
30	442	444	441	443	442	442	442	443	439	441	441	441	441	442	441	441			
35	417	417	415	416	416	417	417	418	414	414	414	415	415	415	414	414			
40	388	387	386	387	387	388	388	389	384	385	384	385	385	386	385	385			
45	356	355	355	356	356	357	356	357	351	352	352	353	353	353	352	353			
50	320	321	320	320	320	322	322	322	317	317	318	318	319	319	317	317			
55	284	284	284	284	285	286	285	286	280	281	281	282	281	281	280	281			
60	246	246	245	246	247	248	248	248	242	243	243	243	244	244	243	242			
65	208	209	208	208	209	211	211	211	205	205	205	206	207	205	205	204			
70	172	172	172	173	173	175	175	175	169	170	170	171	171	171	169	168			
75	140	140	140	141	142	144	144	143	138	138	138	139	139	139	138	136			
80	112	112	112	113	115	116	117	116	110	110	110	111	111	111	110	108			
85	88.3	88.1	88.5	89.5	90.8	92.3	92.9	91.8	87.0	86.6	86.6	87.7	87.3	87.1	86.1	85.1			
90	67.4	67.2	67.2	68.2	69.6	70.8	71.4	70.2	65.7	65.6	65.7	66.5	66.5	66.0	64.6	63.9			
95	49.6	49.9	49.9	50.6	51.8	53.5	53.2	52.5	49.1	48.9	49.6	49.7	50.2	48.9	47.8	47.7			
100	38.5	39.0	39.3	39.9	41.3	42.2	41.9	41.8	39.4	39.1	39.3	39.0	39.5	39.0	38.1	38.1			
105	35.3	35.4	35.7	36.7	37.9	38.9	39.0	38.8	37.6	36.7	36.4	36.4	37.0	37.1	36.4	35.8			
110	35.6	35.2	35.6	36.5	37.6	38.7	39.0	38.7	37.5	36.8	36.3	36.6	37.1	37.2	36.5	35.8			
115	34.5	34.1	33.9	34.9	35.9	37.0	37.4	37.2	35.9	35.3	35.2	35.5	35.9	35.7	35.3	34.7			
120	31.9	31.3	30.2	30.3	31.0	32.3	33.3	33.6	32.7	32.5	32.4	32.9	33.1	32.9	32.4	31.8			
125	27.7	26.3	24.6	24.5	25.2	26.2	27.4	28.7	28.4	28.7	28.8	29.9	29.7	29.5	28.9	28.0			
130	23.0	20.9	19.0	18.4	18.8	19.7	20.9	22.3	22.7	23.8	24.6	25.7	26.0	25.0	24.3	22.8			
135	16.8	15.2	13.2	12.3	12.6	13.2	14.3	16.1	16.6	18.0	19.2	20.1	19.8	19.5	20.2	17.9			
140	12.5	9.92	8.02	7.34	7.66	8.60	8.53	10.1	11.2	13.0	13.6	14.3	14.2	14.0	13.5	12.3			
145	7.47	6.44	4.79	4.37	4.47	4.64	5.45	6.35	7.08	8.03	8.61	9.32	9.60	9.05	10.6	8.09			
150	4.69	3.95	2.94	2.68	2.90	3.18	3.65	3.74	3.55	4.38	5.21	5.91	5.84	8.08	6.02	4.99			
155	3.33	3.63	3.25	2.75	4.11	3.13	3.01	2.98	2.42	2.48	3.10	3.15	4.87	3.58	3.88	3.44			
160	3.19	2.98	2.19	2.43	3.31	3.22	3.12	3.04	2.25	2.30	2.67	2.08	3.01	2.51	2.97	2.76			
165	3.10	2.36	2.06	2.23	3.22	3.28	2.61	2.73	2.07	2.10	2.14	2.30	2.91	2.23	2.76	2.68			
170	2.81	2.46	1.44	2.01	2.93	2.79	2.12	2.48	1.56	1.64	1.80	2.37	1.92	2.40	1.97	2.63			
175	2.35	1.43	1.04	1.25	1.65	2.00	2.36	2.32	1.49	1.49	1.68	1.80	1.76	1.51	1.46	1.97			
180	0.79	0.86	0.84	0.76	0.78	0.83	0.86	0.83	0.87	0.86	0.86	0.87	0.87	0.87	0.86	0.86			

C Range: 0 - 360DEG
 C Interval: 22.5DEG
 Test Speed: HIGH
 Temperature:25.8DEG
 Operators:Carl
 Test Date:2022-06-27

γ Range: 0 - 180DEG
 γ Interval: 1.0DEG
 Test System:EVERFINE GO-R5000_V2 SYSTEM V2.0.351
 Humidity:35%
 Test Distance:2.526m [K=1.0000]
 Remarks: