



LED AREA LIGHT WITH Q-BASE AND PHOTOCELL

NEOX series

► **DESIGN** - LED AREA LIGHT WITH Q-BASE AND PHOTOCELL NEOX Series is extremely efficient with a 200lm/W output. With 10kV surge protection and a 0-10V dimmable driver. The built-in Q-base allows you to install the microwave or PIR motion sensor. Integrated photocell switches the fixture on at night time. The photocell can be disabled with built-in switch.

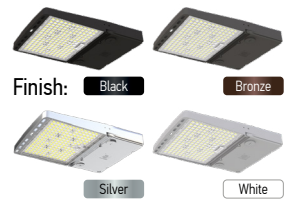
► **VARIETY** - Fixture is designed to operate on 120-277V or 200-480V circuits (depending on model) and is available in White, Black, Silver or Bronze finishes.

► **PHOTOCELL** - The built-in Dusk to Dawn Photocell will automatically activate/deactivate the fixture depending on the time of day. The photocell can be disabled with on-off switch.

► **COLOR AND POWER SELECTABLE** - You can choose between 3,000 K warm white, 4,000 K cool white, and 5,000 K daylight white color temperatures.

► **INSTALLATION** - You can mount the fixture using a wide range of brackets: for example, with a slip-fitter, arm mount or yoke (all sold separately). This will enable you to optimally adjust the fixture to suit your requirements. The fixture can be mounted either on a junction box or directly on the wall. It is also Wet Locations rated and perfect commercial or industrial solution for outdoor lighting.

► **ADVANTAGES** - With calculated lifespan up to 145 000 hours, these fixtures are made to last decades under normal operation! ASD provides a 5-year limited warranty along with UL and DLC Premium certifications to guarantee top quality products and safety!



Finish: Black Bronze
Silver White

PRODUCT PRESENTATION:

Model	Power	Sensor base	Voltage	Dimming	Lumens	CCT	Finish	Dimensions	Pre-installed	Feature	Certification	
LSB5B-NEOX 200 lm/W												
ASD-LSB5B-NEOX-150BK	100/120/150W	3-pin	120-277V	0-10V	28,213lm	3CCT (3,000/4,000/5,000K)	Black	12-5/16" x 11-5/16" x 2-7/16"	Photocell	Cord 4 ft	UL (E473804), DLC Premium	
ASD-LSB5B-NEOX-150BR	100/120/150W	3-pin	120-277V	0-10V	28,213lm	3CCT (3,000/4,000/5,000K)	Bronze	12-5/16" x 11-5/16" x 2-7/16"	Photocell	Cord 4 ft	UL (E473804), DLC Premium	
ASD-LSB5B-NEOX-150SL	100/120/150W	3-pin	120-277V	0-10V	28,213lm	3CCT (3,000/4,000/5,000K)	Silver	12-5/16" x 11-5/16" x 2-7/16"	Photocell	Cord 4 ft	UL (E473804), DLC Premium	
ASD-LSB5B-NEOX-150WH	100/120/150W	3-pin	120-277V	0-10V	28,213lm	3CCT (3,000/4,000/5,000K)	White	12-5/16" x 11-5/16" x 2-7/16"	Photocell	Cord 4 ft	UL (E473804), DLC Premium	
ASD-LSB5B-NEOX-200BR	100/150/200W	3-pin	120-277V	0-10V	37,721lm	3CCT (3,000/4,000/5,000K)	Bronze	12-5/16" x 11-5/16" x 2-7/16"	Photocell	Cord 4 ft	UL (E473804), DLC Premium	
ASD-LSB5B-NEOX-240BR	150/200/240W	3-pin	120-277V	0-10V	46,119lm	3CCT (3,000/4,000/5,000K)	Bronze	16-9/16" x 12-3/16" x 2-1/2"	Photocell	Cord 4 ft	UL (E473804), DLC Premium	
ASD-LSB5B-NEOX-300BK	200/240/300W	3-pin	120-277V	0-10V	57,324lm	3CCT (3,000/4,000/5,000K)	Black	16-9/16" x 12-3/16" x 2-1/2"	Photocell	Cord 4 ft	UL (E473804), DLC Premium	
ASD-LSB5B-NEOX-300BR	200/240/300W	3-pin	120-277V	0-10V	57,324lm	3CCT (3,000/4,000/5,000K)	Bronze	16-9/16" x 12-3/16" x 2-1/2"	Photocell	Cord 4 ft	UL (E473804), DLC Premium	
ASD-LSB5B-NEOX-300SL	200/240/300W	3-pin	120-277V	0-10V	57,324lm	3CCT (3,000/4,000/5,000K)	Silver	16-9/16" x 12-3/16" x 2-1/2"	Photocell	Cord 4 ft	UL (E473804), DLC Premium	
ASD-LSB5B-NEOX-300WH	200/240/300W	3-pin	120-277V	0-10V	57,324lm	3CCT (3,000/4,000/5,000K)	White	16-9/16" x 12-3/16" x 2-1/2"	Photocell	Cord 4 ft	UL (E473804), DLC Premium	
ASD-LSB5B-NEOX-500BR	300/400/500W	3-pin	120-277V	0-10V	96,247lm	3CCT (3,000/4,000/5,000K)	Bronze	29-7/16" x 12-3/16" x 2-3/4"	Photocell	Cord 4 ft	UL (E473804), DLC Premium	
LSB5B-NEOX HIGH VOLTAGE 200 lm/W												
ASD-LSB5BHV-NEOX-150BR	100/120/150W	3-pin	200-480V	0-10V	28,157lm	3CCT (3,000/4,000/5,000K)	Bronze	12-5/16" x 11-5/16" x 2-7/16"	Photocell	Cord 4 ft	UL (E473804), DLC Premium	
ASD-LSB5BHV-NEOX-200BR	100/150/200W	3-pin	200-480V	0-10V	37,721lm	3CCT (3,000/4,000/5,000K)	Bronze	12-5/16" x 11-5/16" x 2-7/16"	Photocell	Cord 4 ft	UL (E473804), DLC Premium	
ASD-LSB5BHV-NEOX-240BR	150/200/240W	3-pin	200-480V	0-10V	46,211lm	3CCT (3,000/4,000/5,000K)	Bronze	16-9/16" x 12-3/16" x 2-1/2"	Photocell	Cord 4 ft	UL (E473804), DLC Premium	
ASD-LSB5BHV-NEOX-300BR	200/240/300W	3-pin	200-480V	0-10V	57,496lm	3CCT (3,000/4,000/5,000K)	Bronze	16-9/16" x 12-3/16" x 2-1/2"	Photocell	Cord 4 ft	UL (E473804), DLC Premium	
ASD-LSB5BHV-NEOX-300WH	200/240/300W	3-pin	200-480V	0-10V	57,496lm	3CCT (3,000/4,000/5,000K)	White	16-9/16" x 12-3/16" x 2-1/2"	Photocell	Cord 4 ft	UL (E473804), DLC Premium	
ASD-LSB5BHV-NEOX-500BR	300/400/500W	3-pin	200-480V	0-10V	96,440lm	3CCT (3,000/4,000/5,000K)	Bronze	29-7/16" x 12-3/16" x 2-3/4"	Photocell	Cord 4 ft	UL (E473804), DLC Premium	
SENSORS AND REMOTE												
ASD-09MW-WH	Microwave motion sensor 3pin white								2-1/8" x 2-1/8" x 1-5/16"	-	-	-
ASD-09MW-BK	Microwave motion sensor 3pin black								2-1/8" x 2-1/8" x 1-5/16"	-	-	-
ASD-09IR-WH	Infrared motion sensor 3pin 39 ft white								2-1/8" x 2-1/8" x 1-11/16"	-	-	-
ASD-09IR-BK	Infrared motion sensor 3pin 39 ft black								2-1/8" x 2-1/8" x 1-11/16"	-	-	-
ASD-09IR50-WH	Infrared motion sensor 3pin 50 ft white								2-1/8" x 2-1/8" x 1-11/16"	-	-	-
ASD-09MW-NLS-WH	Microwave motion sensor NLS 3pin white								2-1/8" x 2-1/8" x 1-3/8"	-	-	-
ASD-09IR-NLS-WH	Infrared motion sensor NLS 3pin 39 ft white								2-1/8" x 2-1/8" x 1-11/16"	-	-	-
ASD-06RC	Remote control for motion sensor								5-11/16" x 1-3/4" x 13/16"	-	-	-

For detailed luminous flux information please refer to Annex 1, page 10.

For most up-to-date spec sheets please refer to asd-lighting.com



LED AREA LIGHT WITH Q-BASE AND PHOTOCELL

NEOX series

TECHNICAL PARAMETERS:

Model	Max input current	Inrush current	Work environment	Operating temperature	Power factor	Beam angle	Surge protection	Housing	Lens	CRI
LSB5B-NEOX 200 lm/W										
ASD-LSB5B-NEOX-150BK	1.65 A	60 A	Wet location	-40°F to 122°F (-40°C to 50°C)	> 0.9	158°x100°	6 kV	Aluminum	PC	> 70
ASD-LSB5B-NEOX-150BR	1.65 A	60 A	Wet location	-40°F to 122°F (-40°C to 50°C)	> 0.9	158°x100°	6 kV	Aluminum	PC	> 70
ASD-LSB5B-NEOX-150SL	1.65 A	60 A	Wet location	-40°F to 122°F (-40°C to 50°C)	> 0.9	158°x100°	6 kV	Aluminum	PC	> 70
ASD-LSB5B-NEOX-150WH	1.65 A	60 A	Wet location	-40°F to 122°F (-40°C to 50°C)	> 0.9	158°x100°	6 kV	Aluminum	PC	> 70
ASD-LSB5B-NEOX-200BR	2.20 A	60 A	Wet location	-40°F to 122°F (-40°C to 50°C)	> 0.9	158°x100°	6 kV	Aluminum	PC	> 70
ASD-LSB5B-NEOX-240BR	2.64 A	60 A	Wet location	-40°F to 122°F (-40°C to 50°C)	> 0.9	158°x100°	6 kV	Aluminum	PC	> 70
ASD-LSB5B-NEOX-300BK	3.30 A	80 A	Wet location	-40°F to 122°F (-40°C to 50°C)	> 0.9	158°x100°	6 kV	Aluminum	PC	> 70
ASD-LSB5B-NEOX-300BR	3.30 A	80 A	Wet location	-40°F to 122°F (-40°C to 50°C)	> 0.9	158°x100°	6 kV	Aluminum	PC	> 70
ASD-LSB5B-NEOX-300SL	3.30 A	80 A	Wet location	-40°F to 122°F (-40°C to 50°C)	> 0.9	158°x100°	6 kV	Aluminum	PC	> 70
ASD-LSB5B-NEOX-300WH	3.30 A	80 A	Wet location	-40°F to 122°F (-40°C to 50°C)	> 0.9	158°x100°	6 kV	Aluminum	PC	> 70
ASD-LSB5B-NEOX-500BR	4.6 A	100 A	Wet location	-40°F to 122°F (-40°C to 50°C)	> 0.9	158°x100°	6 kV	Aluminum	PC	> 70
LSB5B-NEOX HIGH VOLTAGE 200 lm/W										
ASD-LSB5BHV-NEOX-150BR	0.83 A	78 A	Wet location	-40°F to 122°F (-40°C to 50°C)	> 0.9	158°x100°	10 kV	Aluminum	PC	> 70
ASD-LSB5BHV-NEOX-200BR	1.10 A	130 A	Wet location	-40°F to 122°F (-40°C to 50°C)	> 0.9	158°x100°	10 kV	Aluminum	PC	> 70
ASD-LSB5BHV-NEOX-240BR	1.32 A	150 A	Wet location	-40°F to 122°F (-40°C to 50°C)	> 0.9	158°x100°	10 kV	Aluminum	PC	> 70
ASD-LSB5BHV-NEOX-300BR	1.65 A	150 A	Wet location	-40°F to 122°F (-40°C to 50°C)	> 0.9	158°x100°	10 kV	Aluminum	PC	> 70
ASD-LSB5BHV-NEOX-300WH	1.65 A	150 A	Wet location	-40°F to 122°F (-40°C to 50°C)	> 0.9	158°x100°	10 kV	Aluminum	PC	> 70
ASD-LSB5BHV-NEOX-500BR	2.8 A	130 A	Wet location	-40°F to 122°F (-40°C to 50°C)	> 0.9	158°x100°	10 kV	Aluminum	PC	> 70

EFFECTIVE PROJECTED AREA:

Model	Fixture quantity					
LSB5B-NEOX	Single	Double 180°	Double 90°	Triple 90°	Triple 120°	Quad 90°
150-200W	1.16 ft ²	2.32 ft ²	2.32 ft ²	3.48 ft ²	3.48 ft ²	4.64 ft ²
240-300W	1.686 ft ²	3.372 ft ²	3.372 ft ²	5.058 ft ²	5.058 ft ²	6.744 ft ²
500W	2.98 ft ²	5.96 ft ²	5.96 ft ²	8.94 ft ²	8.94 ft ²	11.92 ft ²

DIMMING COMPATIBLE CONTROLS:

Brand	Lutron	Leviton	Eaton
Models	DVCL-153P	IP710-DLZ	SF10P
	NTSTV-DV	DDMX1	
	NTFTV	DDL06	

PACKAGE CONTENTS:

Description	Quantity
LED Area Light with Q-base and photocell	1
Box	1

For most up-to-date spec sheets please refer to asd-lighting.com



LED AREA LIGHT WITH Q-BASE AND PHOTOCELL

NEOX series

ACCESSORIES (sold separately):

Microwave motion sensor 3pin ASD-09MW 	Arm mounting bracket for 150-300W ASD-AM-LSB5 	Adjustable arm mounting bracket for 150-300W ASD-AMR-LSB5 	Wall mounting bracket ASD-WMB-LSB
Infrared motion sensor 3pin ASD-09IR 	Slip fitter bracket for 150-300W ASD-SF-LSB5 	Full trunnion mounting bracket for 150-300W ASD-TR-LSB5 	Spill shield for 150-200W ASD-SPS-LSB5
Microwave motion sensor NLS 3pin ASD-09MW-NLS 			
Infrared motion sensor NLS 3pin ASD-09IR-NLS 	Dual bull tenon bracket ASD-B2BT 	Triple bull tenon bracket ASD-B3BT 	for 240-300W ASD-SPS2-LSB5
Infrared motion sensor 3pin 50ft ASD-09IR50 			
Remote control for motion sensor ASD-06RC 	Floodlight mounting bracket for LSB5B 150-200W ASD-FM1-LSB5B 	for LSB5B 240-300W ASD-FM2-LSB5B 	Clear lens for LSB5B 150-200W ASD-LFLA-LSB5B
			60° Floodlight ASD-LFLB-LSB5B
			for LSB5B 240-300W ASD-LFLB-LSB5B
			type II-M ASD-LZA-LSB5B type IV-S ASD-L4A-LSB5B type V-S ASD-L5A-LSB5B
			type II-M ASD-LZB-LSB5B type IV-S ASD-L4B-LSB5B type V-S ASD-L5B-LSB5B

ACCESSORY COMPATIBILITY LIST:

Accessories	Models	Accessories																		
		Microwave motion sensor 3pin ASD-09MW	Infrared motion sensor 3pin ASD-09IR; ASD-09IR50	Microwave motion sensor NLS 3pin ASD-09MW-NLS; WH	Infrared motion sensor NLS 3pin ASD-09IR-NLS; WH	Arm mounting bracket ASD-AM-LSB5	Adjustable arm mounting bracket for 150-300W ASD-AMR-LSB5	Slip fitter bracket for 150-300W ASD-SF-LSB5	Dual bull tenon bracket ASD-B2BT	Triple bull tenon bracket ASD-B3BT	Full trunnion mounting bracket for 150-300W ASD-TR-LSB5	Floodlight mounting bracket for 150-200W ASD-FM1-LSB5B	Floodlight mounting bracket for 240-300W ASD-FM2-LSB5B	Wall mounting bracket ASD-WMB-LSB	Spill shield for 150-200W ASD-SPS-LSB5	Spill shield for 240-300W ASD-SPS2-LSB5	Clear lens for 150-200W ASD-LZA-LSB5B; ASD-L4A-LSB5B; ASD-L5A-LSB5B	60° Floodlight Clear lens for 150-200W ASD-LFLA-LSB5B	Clear lens for 240-300W ASD-LZB-LSB5B; ASD-L4B-LSB5B; ASD-L5B-LSB5B	60° Floodlight Clear lens for 240-300W ASD-LFLB-LSB5B
ASD-LSB5B/ ASD-LSB5BHV	150W	•	•	•	•	•	•	•	•	•	•	•	•	•	•	•	•	•	•	•
	200W	•	•	•	•	•	•	•	•	•	•	•	•	•	•	•	•	•	•	•
	240W	•	•	•	•	•	•	•	•	•	•	•	•	•	•	•	•	•	•	•
	300W	•	•	•	•	•	•	•	•	•	•	•	•	•	•	•	•	•	•	•
500W	•	•	•	•	•	•	•	•	•	•	•	•	•	•	•	•	•	•	•	

For most up-to-date spec sheets please refer to asd-lighting.com



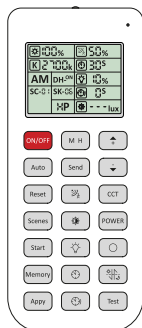


LED AREA LIGHT WITH Q-BASE AND PHOTOCELL

NEOX series

MOTION SENSOR INFORMATION

REMOTE CONTROL **ASD-06RC** sold separately

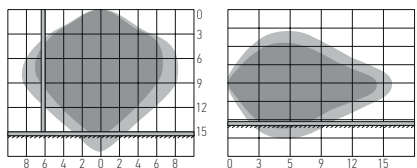


Button	Remarks	Button	Remarks	Button	Remarks
ON/OFF	ON/OFF Turn the sensor ON/OFF.	M H	Mounting height Adjust detection area/sensitivity levels according to real installation situations, higher or lower.	Up	The main functional buttons to adjust the factors to desired level.
Auto	Auto Enter "sensor mode" and perform previous settings.	Send	Send Memorize and send out the previous setting of individual parameters.	Down	Press + - button to dim light directly auto in non-detection mode.
Reset	Reset Enter "sensor mode" and perform the default settings.	%	Detection range Also known as "sensitivity", 100 % means the highest sensitivity and longest distance. Use this button and the + - buttons to adjust.	CCT	CCT selectable Not applicable to this product.
Scenes	Scenes Shows current settings saved in remote.	Daylight sensor	Daylight sensor The preset lux level at which motion will be detected. Use this button and the + - buttons to adjust.	POWER	Power Adjust brightness in both ON/OFF mode & sensor mode, minimum 10%, max 100%, each time this button is pressed it changes by 5%.
Start	Start Press this to begin scene setup.	Stand-by dimming	Stand-by dimming After hold time, the light will dim from 100 % to optional standby dimming levels. Use this button and the + - buttons to adjust.	Reserved button	Not applicable to this product.
Memory	Memory Saves the scene settings.	Hold time	Hold time The period that light will stay illuminated 100 % after no motion is detected. Use this button and the + - buttons to adjust.	Daylight harvesting	Daylight harvesting function enabled or disabled.
Apply	Apply Applies current scene settings to the fixture.	Stand-by period	Stand-by period The period after holdtime, during which the light keeps standby dimming level. Use this button and the + - buttons to adjust.	Test button	Press this button to test the sensor; it will temporarily change the hold time to 2s. This setting cannot be saved.

! Use the ASD-06RC remote control to put the ASD-09-NLS sensor in pairing mode. Point the remote control at the sensor and press the "RESET" button.



MICROWAVE MOTION SENSOR:



Highest mounting height is 49.2 ft (15 m). This figure indicates the maximum distance at the highest mounting height with 100 % sensitivity.

- Well detected area
- Possibly detected area

Ceiling mounted

Wall mounted

User notes:

- Microwaves can penetrate walls or glass thinner than 0.8" but will be impaired if thicker than 0.8".
- The driver voltage shall be stable and float within 10 %.
- Detection area will be affected by speed of motion, mounting height and movement volume.
- Conduct testing with adequate ambient lighting for best results.
- Dimming performance differs when connected to different drivers; if the driver can't completely turn OFF, sensor can't either.
- The first time powered ON sensor, light will be ON 100% for about 10S then dims to standby level or OFF.

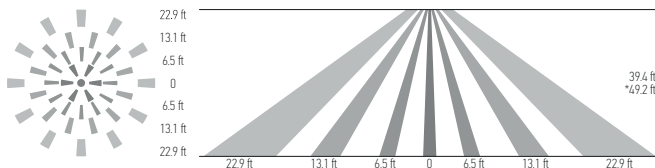
Installation precautions:

- Suitable for ceiling mount installation, adjust sensitivity properly if it's installed on side-wall because it gets more sensitive.
- Make sure the microwave module is completely exposed.
- The detection surface of the sensor module should be installed facing the detection area.

Application environment:

- Suitable for indoor application, half/completely outdoor environment conditions might trigger the sensor.
- Shall be mounted securely, to avoid any false triggers caused by movement of the fixture itself.
- Keep the sensor module away from AC input and DC output to avoid high/low frequency signal interference.

INFRARED MOTION SENSOR:



Mounting height < 39.4 ft (12 m) ceiling mounting (* for ASD-09IR50 < 49.2 ft (15 m))

User notes:

- The driver voltage shall be stable and float within 10%.
- Detection area options may not function as expected because they depend on the Fresnel lens, which physically determines their operation.
- Detection distance performance works better when moving parallel to the sensor as opposed to towards it.
- Conduct testing with adequate ambient lighting for best results.
- Dimming performance differs when connected to different drivers; if the driver can't completely turn OFF, sensor can't either.
- The first time powering ON the sensor, light will be ON 100% for about 45S then dims to standby level or OFF.

Installation precautions:

- PIR sensor can't be placed inside any material, fresnel lens must be completely exposed in air.
- Fresnel lens of the PIR sensor must be lower than light fixture.
- Suitable for ceiling mount installation, adjust sensitivity properly if it's installed on a wall because it will become more sensitive.

Application environment:

- Suitable for indoor application, partial/completely outdoor environment conditions might trigger the sensor.
- The PIR sensor is not suitable for environments with sudden changes in temperature or airflow.
- Not suitable environment if there's shelves between the sensor and target area.
- Shall be mounted securely, to avoid any false triggers caused by movement of the fixture itself.

Specifications	models: ASD-09MW, ASD-09MW-NLS	models: ASD-09IR, ASD-09IR-NLS	models: ASD-09IR50	Default setting
Detection area	25 %/50 %/75 %/100 %			100 %
Hold time	Remote control: 5 s/30 s/1 min/3 min/5 min/10 min/20 min/30 min Built-in switch: 5 s/1 min/5 min/10 min			10 min
Daylight threshold	2 lux (0.2 fc)/10 lux (0.9 fc)/30 lux (2.8 fc)/50 lux (4.7 fc)/80 lux (7.4 fc)/120 lux (11.2 fc)/200 lux (18.6 fc)/250 lux (23.2 fc)/300 lux (27.9 fc)/350 lux (32.5 fc)/400 lux (37.2 fc)/disable			Disable
Standby period	0 s/10 s/30 s/1 min/5 min/10 min/30 min/60 min/+∞			0 s
Standby dimming level	Remote control: 10 %/20 %/30 %/50 % Built-in switch: 0 %/10 %/30 %/50 %			10 %
Operating voltage	10 - 15 V			-
Operating current	< 30 mA	< 15 mA	< 30 mA	-
Mounting height	max 49.2 ft (15 m)	max 39.4 ft (12 m)	max 49.2 ft (15 m)	-
Detection range	≥ 9 ft (3 m)	9.8 - 22.9 ft (3-7 m)		-
Operating frequency	5.8 GHz ± 75 MHz	-	-	-
Transmitting power	< 0.3 mW	-	-	-

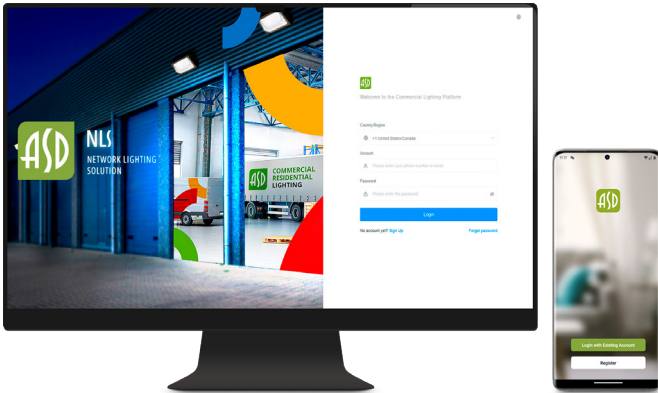
For most up-to-date spec sheets please refer to asd-lighting.com





LED AREA LIGHT WITH Q-BASE AND PHOTOCELL

NEOX series



ASD NLS is a professional-grade smart control application designed to manage and control lighting fixtures in commercial properties. With ASD NLS, you can conveniently control your lights from your smartphone or PC, anytime and anywhere.

You can group fixtures by rooms, floors and objects, and create schedules based on day and time. You can also grant permanent or temporary permissions to employees and guests with different access levels. Our smart platform enables you to monitor energy usage statistics, view the status of each fixture, and much more.

► For ASD-NLS sensors download ASD NLS App and add the fixture to it according to the manual (download manuals and app from the links or scan the QR codes on the right).



[Desktop manual](#)



[Smartphone manual](#)



ASD-09MW-NLS
Microwave motion sensor NLS 3pin



ASD-09IR-NLS
Infrared motion sensor NLS 3pin



[ASD NLS APP download Android](#)



[ASD NLS APP download iOS](#)



FIXTURE CONTROL

Set brightness, standby time and dimming level, or apply scenes and schedules.



SCHEDULING

Set a variety of customizable start / end actions based on time of day and days of the week.



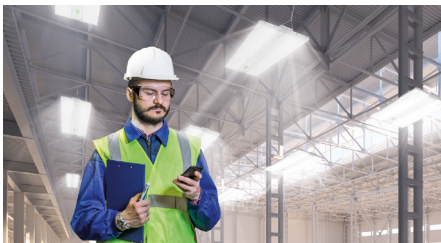
ADVANCED AREA MANAGEMENT

Create and customize projects for different types of areas, buildings, floors and zones.



CONTROL PERMISSIONS

Give your staff or installers control over the lighting.



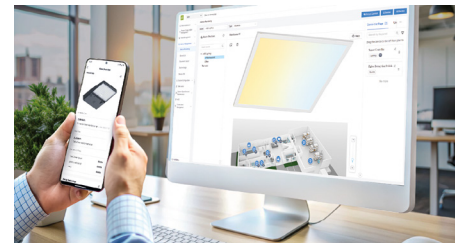
ADVANCED ENERGY CONSUMPTION

Monitor equipment status and receive daily reports.



PROJECT OVERVIEW

Monitor device status and daily reports.



For most up-to-date spec sheets please refer to asd-lighting.com



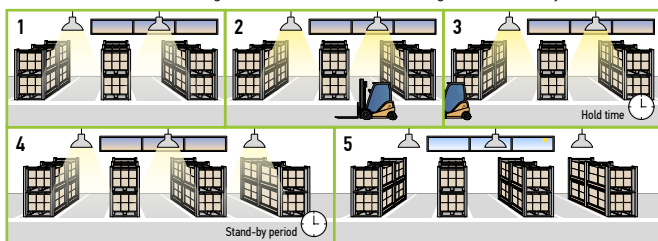


LED AREA LIGHT WITH Q-BASE AND PHOTOCELL

NEOX series

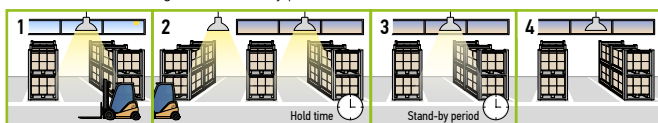
WITH DUSK/DAWN FUNCTION:

1. With insufficient ambient brightness, sensor turns on light and keeps it at standby dimming level even if there is no motion or presence.
2. When sensor detects motion or presence it will bring the light level up to 100 %.
3. After motion is no longer detected, fixture remains at 100 % for hold time.
4. After the preset hold time period, it will dim to the standby dimming level and maintain it indefinitely.
5. With sufficient ambient brightness, sensor will turn OFF light automatically.



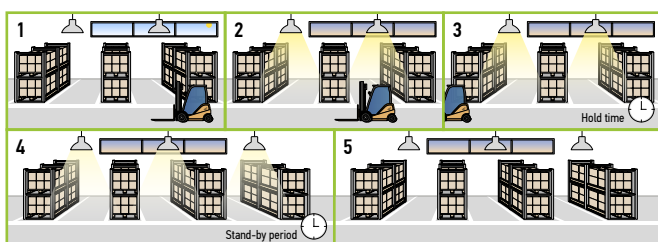
WITH DAYLIGHT DISABLED:

1. Sensor turns ON light when motion is detected.
2. Light will stay on after detecting motion for the desired hold time.
3. Sensor dims light to standby dimming level after hold time if there is still no motion.
4. Sensor turns OFF light after standby period.



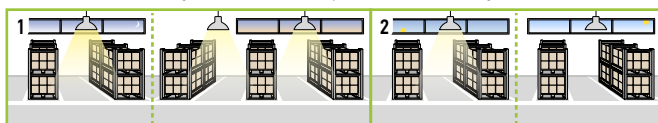
WITH DAYLIGHT THRESHOLD:

1. With sufficient daylight, the light remains OFF even after motion is detected.
2. With insufficient daylight, the sensor turns light ON when motion is detected.
3. After there's no motion detected, the sensor keeps light ON 100 % for holdtime.
4. After holdtime, sensor dims light to standby dimming level for standby period. If the standby period has been set as 0s, sensor turns light OFF automatically after holdtime.
5. The sensor turns OFF light automatically after the standby period when there's no motion detected.



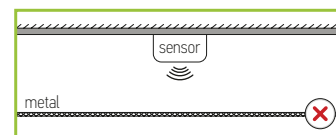
DAYLIGHT HARVESTING:

1. When the ambient brightness is lower than the preset lux level, the sensor will automatically turn on the light and adjust the dimming according to changes in ambient brightness. As it gets darker outside, the fixtures will brighten, and as it gets brighter outside, the fixtures will dim.
2. When the ambient brightness exceeds the preset lux level, the light will turn OFF.

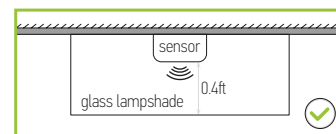


MICROWAVE MOTION SENSOR:

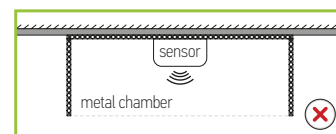
To avoid blocking the microwave emission, the microwave sensor can not be covered with metal materials, be sprayed with a coating of metal components, or have attached metal material or stickers etc.



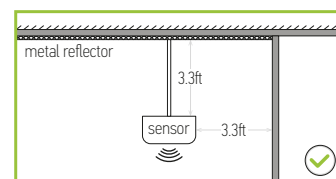
The distance between the antenna and the glass (dielectric material) should be no less than 0.4 ft when the sensor is within the glass lampshade. Otherwise, the microwave motion sensor will not penetrate the glass easily.



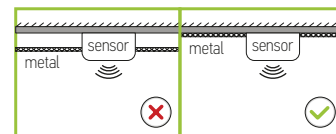
Avoid placing the sensor inside a metal chamber, this may cause a mis-trigger.



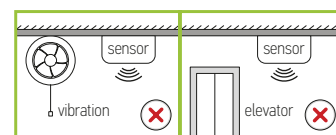
The sensor should not be placed in a small confined space. To avoid increasing the sensor detection range or abnormal operation, the sensor should be kept away from large areas of metal and glass reflectors (separation distance at least 3.3 ft). Reduce the detection area setting.



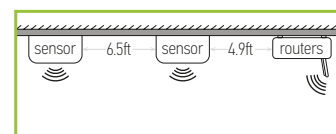
To avoid affecting the microwave signal transmission, the microwave antenna should be higher than the surrounding metal surface.



Any vibration or movement may trigger the sensor. Ensure the sensor is far from any constant movement.

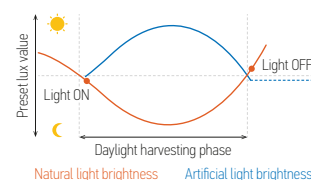


At least 2 m/6.5 ft distance between microwave sensors; 1.5 m/4.9 ft between the sensor and other wireless devices such as routers to avoid possible radio interference.



DAYLIGHT HARVESTING SETTING:

1. Adjust "daylight" value higher than 50lux.
2. Preset "standby period" 0s.
3. Press "daylight harvesting" button on remote control to activate.



For most up-to-date spec sheets please refer to asd-lighting.com





LED AREA LIGHT WITH Q-BASE AND PHOTOCELL

NEOX series

INSTALLATION GUIDE

IMPORTANT SAFETY INFORMATION:

Please read all the instructions below before installation!

- ▶ Make sure that the supply voltage corresponds to the rated product voltage.
- ▶ The product must be installed by a qualified electrician in accordance with the National Electrical Code and corresponding local codes.
- ▶ If the product is damaged, do not use it.

⚠ WARNING

Risk of personal injury – read and follow all warnings and installation instructions. Keep or give to the owner for future reference.

Risk of cuts: Wear gloves to prevent cuts or abrasions when removing from carton, handling, installing, and maintaining this product.

Risk of electric shock: This product must be installed in accordance with the applicable installation code by a person familiar with the construction and operation of the product and the hazards involved.

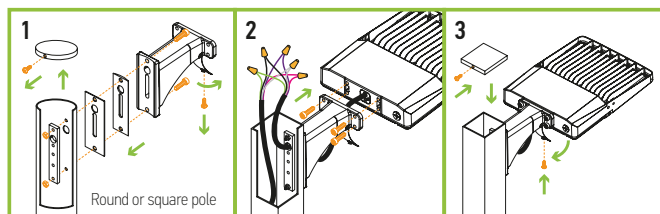
Risk of Fire: Minimum 194°F supply conductors. Consult a qualified electrician to ensure correct branch circuit conductor.

ASD® assumes no responsibility for claims arising out of improper or careless Installation or handling of this product.

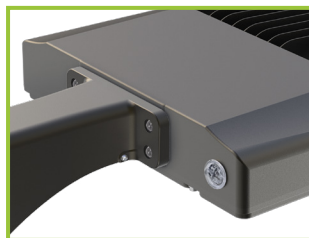
ARM MOUNTING BRACKET:

ASD-AM-LSB5 sold separately

1. Open up the door on the arm bracket (1 screw). Install the mounting arm onto the pole (2 bolts). Make sure the silicone gaskets form a tight seal.
2. Thread the cord from the fixture through the bracket into the pole and tighten the four M8 screws on the body of the light. Wire in accordance with wiring schematic.
3. Close the door on the arm bracket (1 screw).



BUILT-IN PHOTOCELL INFORMATION



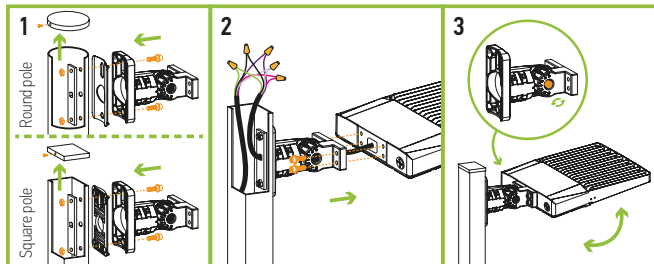
Specifications	
Light level to turn ON	≤ 80 lux (≤ 7.4 fc)
Light level to turn OFF	≥ 150 lux (≥ 13.9 fc)
Operating temperature	-40°F to 140°F (-40°C to 60°C)

The fixtures with a built-in photocell automatically turn off during daylight hours. Photocell can be easily deactivated by unscrewing it.

ADJUSTABLE ARM MOUNTING BRACKET:

ASD-AMR-LSB5 sold separately

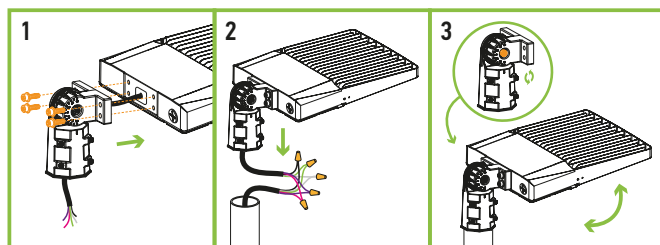
1. Open up the door on the arm bracket (1 screw). Install the mounting arm onto the pole (2 bolts). Make sure the silicone gaskets form a tight seal. Choose gasket depending on the shape of the pole (round or flat).
2. Thread the cord from the fixture through the bracket into the pole and tighten the four M8 screws on the body of the light. Wire in accordance with wiring schematic.
3. Adjust the fixture angle with the large hex bolt on the side of the bracket. If necessary.



SLIP FITTER MOUNTING BRACKET:

ASD-SF-LSB5 sold separately

1. Thread the wire through the slip fitter and secure it to the fixture with four screws.
2. Make AC connections in accordance with wiring diagram.
3. If necessary adjust the fixture angle with the large hex bolt on the side of the slip fitter.

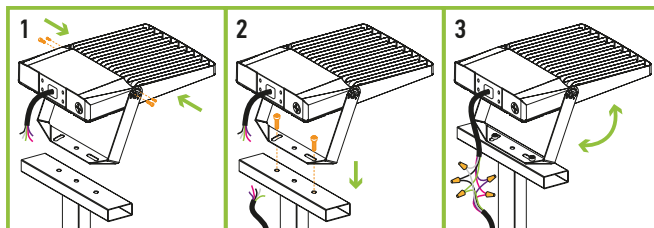


* The wiring is inside the pole, the side is sealed with a rubber ring and secured with screws, preventing water from getting inside the fixture.

FLOODLIGHT MOUNTING BRACKET:

ASD-FM1-LSB5B **ASD-FM2-LSB5B** sold separately

1. Drill holes on the mounting surface corresponding to the holes in the arm. Attach fixture to bracket with 2 screws.
2. Align bracket holes with mounting surface holes and secure with 2 screws.
3. Wire in accordance with the wiring schematic. Seal the connections with the back plate of the fixture. Adjust fixture angle as needed.



For most up-to-date spec sheets please refer to asd-lighting.com





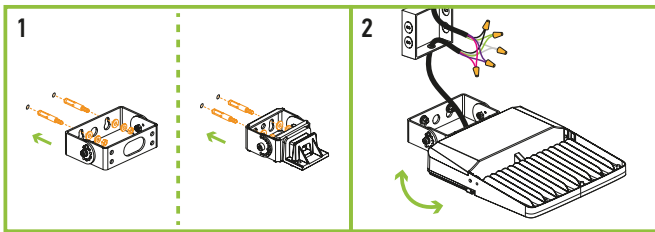
LED AREA LIGHT WITH Q-BASE AND PHOTOCELL

NEOX series

FULL TRUNNION MOUNTING BRACKET:

ASD-TR-LSB5 sold separately

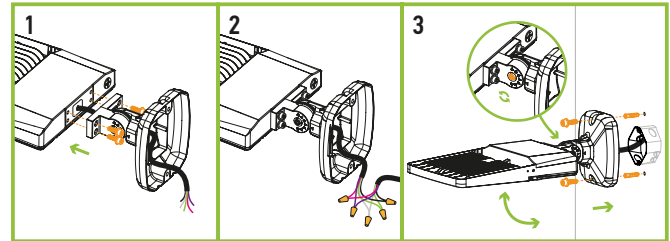
1. Drill holes on the mounting surface matching in size to the holes on the arm. Secure the bracket on the wall with screws. Pull wires through mount, secure fixture to the bracket.
2. Wire the AC power into the water tight junction box as shown in the wiring schematic diagram. Adjust the screw position to get desired angle when necessary.



WALL MOUNTING BRACKET:

ASD-WMB-LSB sold separately

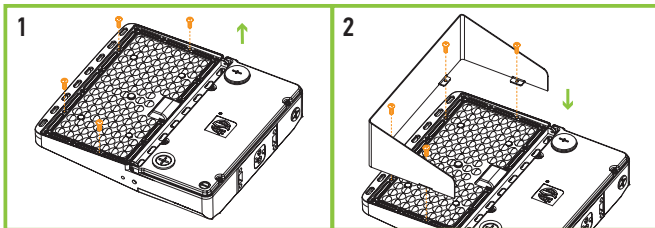
1. Take the bracket apart. Mark and drill two holes in the wall. Insert two dowels into the holes and secure the bracket to the wall using bolts. Then, feed the wire from the bracket into the lamp body. Once properly positioned, use four screws to fasten the lamp body to the gasket.
2. Wire according to the electrical schematic diagram.
3. Put the bracket on the bolt with screws. Turn the large screws to adjust the angle.



SPILL SHIELD INSTALLATION:

ASD-SPS-LSB5 **ASD-SPS2-LSB5** sold separately

1. Take out 4 screws from the front of the 150-200W fixture, 6 screws for 240-300W fixture.
2. Attach the visor to the lens and secure it with new screws. For 150-200W fixtures, use ASD-SPS-LSB5 and 4 bolts; for 240-300W fixtures, use ASD-SPS2-LSB5 and 6 bolts. Ensure all screws are tightened securely.

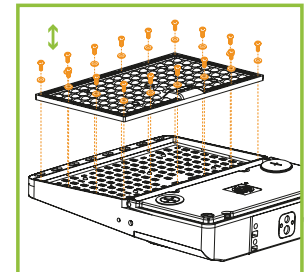


LENS INSTALLATION:

ASD-L2A-LSB5B **ASD-L4A-LSB5B** **ASD-L5A-LSB5B**
ASD-L2B-LSB5B **ASD-L4B-LSB5B** **ASD-L5B-LSB5B**
ASD-LFLA-LSB5B **ASD-LFLB-LSB5B** sold separately

1. Unscrew all screws from the original lens (T3-M) on the housing.
2. Install the rubber ring on new lens (T4/T5-M, sold separately).
3. Place the lens on the housing and make sure it fits the LEDs correctly.
4. Tighten all the screws back.

Models	Lens
150W, 200W	L2A, L4A, L5A, LFLA
240W, 300W, 500W	L2B, L4B, L5B, LFLB

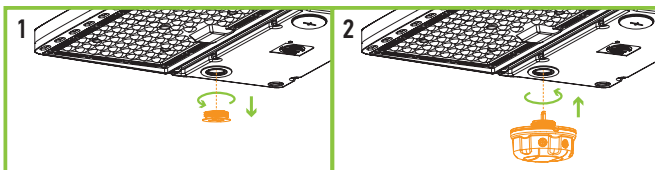


MOTION SENSOR INSTALLATION:

ASD-09MW **ASD-09IR** **ASD-09IR50**

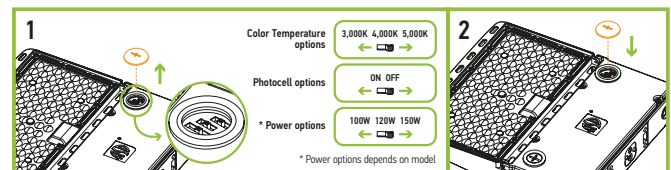
ASD-09MW-NLS **ASD-09IR-NLS** sold separately

1. Unscrew the sensor base cap.
2. Insert and twist the sensor until it is tight on the base surface.



POWER, COLOR TEMPERATURE AND PHOTOCELL SETTINGS:

1. Open knock-out cap in the front panel of the fixture. Select needed power, color temperature and on/off photocell mode with a simple switch.
2. Then close the knock-out cap back.



For most up-to-date spec sheets please refer to asd-lighting.com



LED AREA LIGHT WITH Q-BASE AND PHOTOCCELL

NEOX series

ORDERING INFORMATION

Model	Product dimensions	Weight	Pcs. per carton	Carton size	Carton weight	UPC
LSB5B-NEOX 200 lm/W						
ASD-LSB5B-NEOX-150BK	12-5/16" x 11-5/16" x 2-7/16"	5.7 lbs (2.6 kg)	1	14.6" x 13.4" x 4.7"	7.1 lbs	81012811984
ASD-LSB5B-NEOX-150BL	12-5/16" x 11-5/16" x 2-7/16"	5.7 lbs (2.6 kg)	1	14.6" x 13.4" x 4.7"	7.1 lbs	81012811981
ASD-LSB5B-NEOX-150SL	12-5/16" x 11-5/16" x 2-7/16"	5.7 lbs (2.6 kg)	1	14.6" x 13.4" x 4.7"	7.1 lbs	81012811985
ASD-LSB5B-NEOX-150WH	12-5/16" x 11-5/16" x 2-7/16"	5.7 lbs (2.6 kg)	1	14.6" x 13.4" x 4.7"	7.1 lbs	81012811986
ASD-LSB5B-NEOX-200BR	12-5/16" x 11-5/16" x 2-7/16"	5.7 lbs (2.6 kg)	1	14.6" x 13.4" x 4.7"	7.1 lbs	81012811982
ASD-LSB5B-NEOX-240BR	16-9/16" x 12-3/16" x 2-1/2"	7.1 lbs (3.2 kg)	1	18.9" x 14.2" x 4.7"	8.4 lbs	81012811983
ASD-LSB5B-NEOX-300BK	16-9/16" x 12-3/16" x 2-1/2"	7.1 lbs (3.2 kg)	1	18.9" x 14.2" x 4.7"	8.4 lbs	81012811987
ASD-LSB5B-NEOX-300BR	16-9/16" x 12-3/16" x 2-1/2"	7.1 lbs (3.2 kg)	1	18.9" x 14.2" x 4.7"	8.4 lbs	81012811954
ASD-LSB5B-NEOX-300SL	16-9/16" x 12-3/16" x 2-1/2"	7.1 lbs (3.2 kg)	1	18.9" x 14.2" x 4.7"	8.4 lbs	81012811988
ASD-LSB5B-NEOX-300WH	16-9/16" x 12-3/16" x 2-1/2"	7.1 lbs (3.2 kg)	1	18.9" x 14.2" x 4.7"	8.4 lbs	81012811989
ASD-LSB5B-NEOX-500BR	29-7/16" x 12-3/16" x 2-3/4"	14.1 lbs (6.4 kg)	1	31.3" x 14.2" x 4.9"	15.7 lbs	810128116886
LSB5B-NEOX HIGH VOLTAGE 200 lm/W						
ASD-LSB5BHV-NEOX-150BR	12-5/16" x 11-5/16" x 2-7/16"	5.7 lbs (2.6 kg)	1	14.6" x 13.4" x 4.7"	7.1 lbs	81012811951
ASD-LSB5BHV-NEOX-200BR	12-5/16" x 11-5/16" x 2-7/16"	5.7 lbs (2.6 kg)	1	14.6" x 13.4" x 4.7"	7.1 lbs	81012811979
ASD-LSB5BHV-NEOX-240BR	16-9/16" x 12-3/16" x 2-1/2"	7.1 lbs (3.2 kg)	1	18.9" x 14.2" x 4.7"	8.4 lbs	81012811952
ASD-LSB5BHV-NEOX-300BR	16-9/16" x 12-3/16" x 2-1/2"	7.1 lbs (3.2 kg)	1	18.9" x 14.2" x 4.7"	8.4 lbs	81012811953
ASD-LSB5BHV-NEOX-300WH	16-9/16" x 12-3/16" x 2-1/2"	7.1 lbs (3.2 kg)	1	18.9" x 14.2" x 4.7"	8.4 lbs	81012811980
ASD-LSB5BHV-NEOX-500BR	29-7/16" x 12-3/16" x 2-3/4"	14.1 lbs (6.4 kg)	1	31.3" x 14.2" x 4.9"	15.7 lbs	810190200568

ACCESSORIES:

Model	Product dimensions	Pcs. in middle box	Middle box size	Middle box weight	Pcs. per carton	Carton size	Carton weight	UPC	GTIN 14 in middle box	GTIN 14 in carton
ASD-09MW-WH	2-1/8" x 2-1/8" x 1-5/16"	10	5.5" x 2.6" x 11.4"	1.2 lbs	120	17.3" x 11.8" x 11"	12.1 lbs	810128113700	20810128113704	30810128113701
ASD-09MW-BK	2-1/8" x 2-1/8" x 1-5/16"	10	5.5" x 2.6" x 11.4"	1.2 lbs	120	17.3" x 11.8" x 11"	12.1 lbs	810128113717	20810128113711	30810128113718
ASD-09IR-WH	2-1/8" x 2-1/8" x 1-11/16"	10	5.5" x 2.6" x 11.4"	1.2 lbs	120	17.3" x 11.8" x 11"	12.1 lbs	810128113694	20810128113698	30810128113695
ASD-09IR-BK	2-1/8" x 2-1/8" x 1-11/16"	10	5.5" x 2.6" x 11.4"	1.2 lbs	120	17.3" x 11.8" x 11"	12.1 lbs	810128114349	20810128114343	30810128114340
ASD-09IR50-WH	2-1/8" x 2-1/8" x 1-11/16"	10	5.5" x 2.6" x 11.4"	0.9 lbs	120	17.3" x 11.8" x 11"	10.7 lbs	810128116794	10810128116791	20810128116798
ASD-09MW-NLS-WH	2-1/8" x 2-1/8" x 1-3/8"	10	5.5" x 2.6" x 11.4"	1.2 lbs	120	17.3" x 11.8" x 11"	12.1 lbs	810128113762	20810128113766	30810128113763
ASD-09IR-NLS-WH	2-1/8" x 2-1/8" x 1-11/16"	10	5.5" x 2.6" x 11.4"	1.2 lbs	120	17.3" x 11.8" x 11"	12.1 lbs	810128113755	20810128113759	30810128113756
ASD-06RC	5-11/16" x 1-3/4" x 13/16"	10	6.3" x 2.9" x 11.4"	0.5 lbs	60	15.8" x 11.8" x 9.3"	24.7 lbs	810128114370	30810128114371	40810128114378
ASD-AM-LSB5-BK	6-13/16" x 6-1/4" x 2-5/16"	-	-	-	10	27" x 9.5" x 15.9"	15.4 lbs	81012811845	-	10810128118450
ASD-AM-LSB5-BR	6-13/16" x 6-1/4" x 2-5/16"	-	-	-	10	27" x 9.5" x 15.9"	15.4 lbs	81012811620	-	10810128116203
ASD-AM-LSB5-SL	6-13/16" x 6-1/4" x 2-5/16"	-	-	-	10	27" x 9.5" x 15.9"	15.4 lbs	81012811846	-	10810128118467
ASD-AM-LSB5-WH	6-13/16" x 6-1/4" x 2-5/16"	-	-	-	10	27" x 9.5" x 15.9"	15.4 lbs	81012811847	-	10810128118474
ASD-AMR-LSB5-BK	7-1/4" x 4-15/16" x 6-1/4"	-	-	-	20	27.4" x 16.5" x 14"	52.9 lbs	81012811223	-	20810128112233
ASD-AMR-LSB5-BR	7-1/4" x 4-15/16" x 6-1/4"	-	-	-	20	27.4" x 16.5" x 14"	52.9 lbs	81012811224	-	20810128112240
ASD-AMR-LSB5-SL	7-1/4" x 4-15/16" x 6-1/4"	-	-	-	20	27.4" x 16.5" x 14"	52.9 lbs	81012811225	-	20810128112257
ASD-AMR-LSB5-WH	7-1/4" x 4-15/16" x 6-1/4"	-	-	-	20	27.4" x 16.5" x 14"	52.9 lbs	81012811329	-	10810128113295
ASD-B2BT	26" x 14-3/16" x 2-3/4"	-	-	-	2	28.4" x 9.9" x 18.5"	28.0 lbs	81012811787	-	10810128117873
ASD-B3BT	37-13/16" x 14-3/16" x 2-3/4"	-	-	-	1	39.5" x 4.4" x 17.3"	19.0 lbs	81012811788	-	-
ASD-FM1-LSB5B-BK	11-7/16" x 6-5/16" x 9-7/8"	-	-	-	10	24.8" x 13.8" x 12.4"	21.2 lbs	81012811838	-	10810128118382
ASD-FM1-LSB5B-BR	11-7/16" x 6-5/16" x 9-7/8"	-	-	-	10	24.8" x 13.8" x 12.4"	21.2 lbs	81012811671	-	10810128116715
ASD-FM1-LSB5B-SL	11-7/16" x 6-5/16" x 9-7/8"	-	-	-	10	24.8" x 13.8" x 12.4"	21.2 lbs	81012811672	-	10810128116722
ASD-FM1-LSB5B-WH	11-7/16" x 6-5/16" x 9-7/8"	-	-	-	10	24.8" x 13.8" x 12.4"	21.2 lbs	81012811839	-	10810128118399
ASD-FM2-LSB5B-BK	12-9/16" x 6-1/16" x 9-5/16"	-	-	-	10	22.6" x 14" x 14"	27.6 lbs	81012811840	-	10810128118405
ASD-FM2-LSB5B-BR	12-9/16" x 6-1/16" x 9-5/16"	-	-	-	10	22.6" x 14" x 14"	27.6 lbs	81012811673	-	10810128116739
ASD-FM2-LSB5B-SL	12-9/16" x 6-1/16" x 9-5/16"	-	-	-	10	22.6" x 14" x 14"	27.6 lbs	81012811674	-	10810128116746
ASD-FM2-LSB5B-WH	12-9/16" x 6-1/16" x 9-5/16"	-	-	-	10	22.6" x 14" x 14"	27.6 lbs	81012811841	-	10810128118412
ASD-L2A-LSB5B	10-9/16" x 5-7/8" x 1/2"	-	-	-	30	10.8" x 8.5" x 12"	11.7 lbs	81012811613	-	10810128116135
ASD-L2B-LSB5B	11-7/8" x 8-1/4" x 7/16"	-	-	-	30	11.8" x 10.8" x 12.8"	12.4 lbs	81012811614	-	10810128116142
ASD-L4A-LSB5B	10-9/16" x 5-7/8" x 1/2"	-	-	-	30	10.8" x 8.5" x 12"	11.7 lbs	81012811615	-	10810128116159
ASD-L4B-LSB5B	11-7/8" x 8-1/4" x 7/16"	-	-	-	30	11.8" x 10.8" x 12.8"	12.4 lbs	81012811616	-	10810128116166
ASD-L5A-LSB5B	10-9/16" x 5-7/8" x 1/2"	-	-	-	30	10.8" x 8.5" x 12"	11.7 lbs	81012811617	-	10810128116173
ASD-L5B-LSB5B	11-7/8" x 8-1/4" x 7/16"	-	-	-	30	11.8" x 10.8" x 12.8"	12.4 lbs	81012811618	-	10810128116180
ASD-LFLA-LSB5B	10-9/16" x 5-7/8" x 1/2"	-	-	-	30	10.8" x 8.5" x 12"	11.7 lbs	81012811619	-	10810128116197
ASD-LFLB-LSB5B	11-7/8" x 8-1/4" x 7/16"	-	-	-	30	11.8" x 10.8" x 12.6"	12.4 lbs	81012811687	-	10810128116876
ASD-SF-LSB5-BK	7-1/16" x 4-15/16" x 3-1/16"	-	-	-	20	15.5" x 17.7" x 11.1"	35.3 lbs	81012811196	-	10810128111963
ASD-SF-LSB5-BR	7-1/16" x 4-15/16" x 3-1/16"	-	-	-	20	15.5" x 17.7" x 11.1"	35.3 lbs	81012811104	-	20810128111045
ASD-SF-LSB5-SL	7-1/16" x 4-15/16" x 3-1/16"	-	-	-	20	15.5" x 17.7" x 11.1"	35.3 lbs	81012811197	-	10810128111970
ASD-SF-LSB5-WH	7-1/16" x 4-15/16" x 3-1/16"	-	-	-	20	15.5" x 17.7" x 11.1"	35.3 lbs	81012811330	-	10810128113301

For most up-to-date spec sheets please refer to asd-lighting.com



LED AREA LIGHT WITH Q-BASE AND PHOTOCELL

NEOX series

Model	Product dimensions	Pcs. in middle box	Middle box size	Middle box weight	Pcs. per carton	Carton size	Carton weight	UPC	GTIN 14 in middle box	GTIN 14 in carton
ASD-SPS-LSB5-BR	11" x 5-7/8" x 2-3/4"	-	-	-	10	15.6" x 13" x 12.4"	13.2 lbs	81012811784	-	10810128117842
ASD-SPS2-LSB5-BR	11-15/16" x 8-1/2" x 2-3/4"	-	-	-	10	18.5" x 15.6" x 13"	17.6 lbs	81012811785	-	10810128117859
ASD-TR-LSB5-BK	6-9/16" x 4-7/16" x 1-7/8"	-	-	-	20	14.8" x 10.3" x 12.4"	44.1 lbs	81012811198	-	10810128111987
ASD-TR-LSB5-BR	6-9/16" x 4-7/16" x 1-7/8"	-	-	-	20	14.8" x 10.3" x 12.4"	44.1 lbs	81012811105	-	10810128111055
ASD-TR-LSB5-SL	6-9/16" x 4-7/16" x 1-7/8"	-	-	-	20	14.8" x 10.3" x 12.4"	44.1 lbs	81012811199	-	10810128111994
ASD-TR-LSB5-WH	6-9/16" x 4-7/16" x 1-7/8"	-	-	-	20	14.8" x 10.3" x 12.4"	44.1 lbs	81012811343	-	10810128113431
ASD-WMB-LSB-BR	7-3/16" x 6-1/4" x 3-5/16"	-	-	-	8	18.5" x 15.8" x 13.9"	9.3 lbs	81012811848	-	10810128118481

ANNEX 1

Model	Watts	3,000K	4,000K	5,000K
ASD-LSB5B-NEOX-150BK ASD-LSB5B-NEOX-150BR ASD-LSB5B-NEOX-150SL ASD-LSB5B-NEOX-150WH	100W	18,645lm	19,402lm	19,049lm
	120W	22,455lm	23,602lm	22,686lm
	150W	27,653lm	28,213lm	27,933lm
ASD-LSB5B-NEOX-200BR	100W	18,533lm	19,421lm	19,030lm
	150W	27,384lm	29,007lm	27,725lm
	200W	36,726lm	37,721lm	36,837lm
ASD-LSB5B-NEOX-240BR	150W	26,844lm	29,379lm	28,279lm
	200W	36,938lm	38,041lm	36,292lm
	240W	43,645lm	46,119lm	44,202lm
ASD-LSB5B-NEOX-300BK ASD-LSB5B-NEOX-300BR ASD-LSB5B-NEOX-300SL ASD-LSB5B-NEOX-300WH	200W	37,496lm	39,031lm	37,720lm
	240W	44,729lm	45,761lm	45,758lm
	300W	55,529lm	57,324lm	56,362lm
ASD-LSB5B-NEOX-500BR	300W	55,559lm	58,419lm	54,888lm
	400W	74,081lm	77,975lm	72,859lm
	500W	89,808lm	96,247lm	91,874lm
ASD-LSB5BHV-NEOX-150BR	100W	18,608lm	19,344lm	19,011lm
	120W	22,551lm	23,602lm	22,732lm
	150W	27,598lm	28,157lm	27,901lm
ASD-LSB5BHV-NEOX-200BR	100W	18,571lm	19,421lm	19,087lm
	150W	27,438lm	28,748lm	27,713lm
	200W	37,039lm	37,721lm	37,446lm
ASD-LSB5BHV-NEOX-240BR	150W	26,737lm	29,467lm	28,364lm
	200W	36,974lm	38,098lm	37,418lm
	240W	43,514lm	46,211lm	44,132lm
ASD-LSB5BHV-NEOX-300WH ASD-LSB5BHV-NEOX-300BR	200W	37,571lm	39,070lm	37,750lm
	240W	45,364lm	45,807lm	45,730lm
	300W	52,537lm	57,496lm	56,088lm
ASD-LSB5BHV-NEOX-500BR	300W	55,839lm	58,772lm	55,442lm
	400W	74,081lm	78,131lm	73,595lm
	500W	89,970lm	96,440lm	90,423lm

Model	BUG rating
ASD-LSB5B-NEOX-150BK	B4 U0 G4
ASD-LSB5B-NEOX-150BR	
ASD-LSB5B-NEOX-150SL	
ASD-LSB5B-NEOX-150WH	
ASD-LSB5BHV-NEOX-150BR	
ASD-LSB5B-NEOX-200BR	
ASD-LSB5BHV-NEOX-200BR	
ASD-LSB5B-NEOX-240BR	B5 U0 G4
ASD-LSB5BHV-NEOX-240BR	
ASD-LSB5B-NEOX-300BK	B5 U0 G5
ASD-LSB5B-NEOX-300BR	
ASD-LSB5B-NEOX-300SL	
ASD-LSB5B-NEOX-300WH	
ASD-LSB5BHV-NEOX-300BR	
ASD-LSB5BHV-NEOX-300WH	
ASD-LSB5B-NEOX-500BR	
ASD-LSB5BHV-NEOX-500BR	

For most up-to-date spec sheets please refer to asd-lighting.com