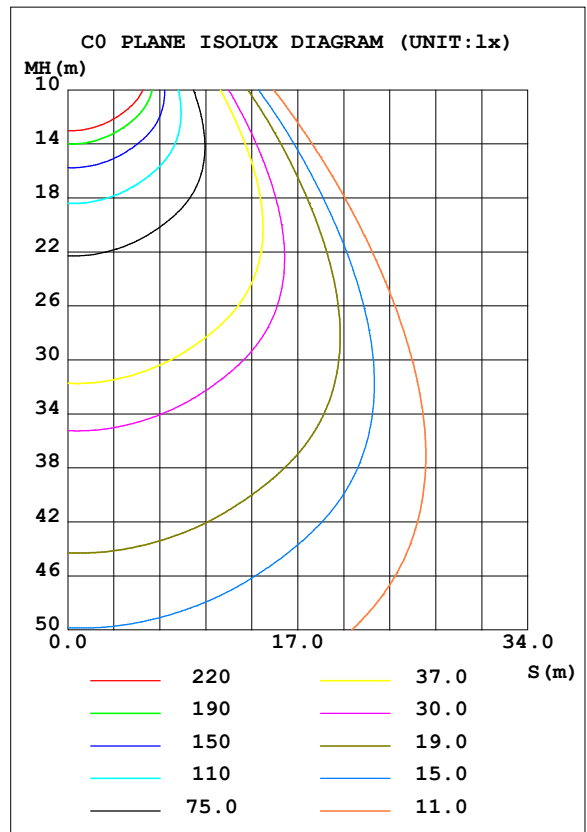
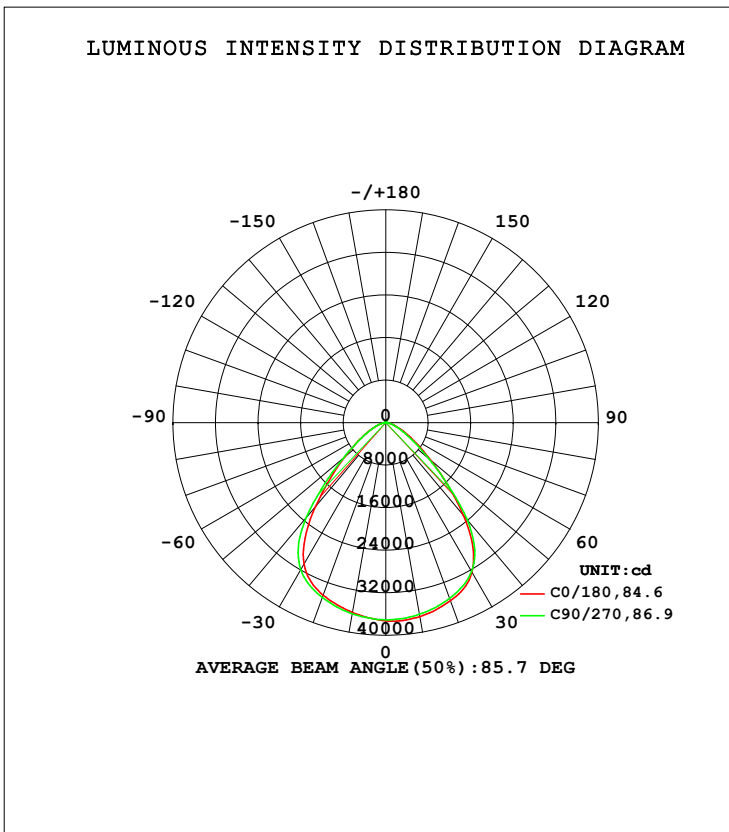


LUMINAIRE PHOTOMETRIC TEST REPORT

Test:U:277.6V I:1.769A P:494.8W PF:0.9937 Freq:59.98Hz Lamp Flux:69734x1 lm		
NAME: ASD-UHB3HV-500ADAC-BK500W-3000K	TYPE:	WEIGHT:
SPEC.:	DIM.:	SERIAL No.:
MFR.: ASD Lighting Corp.	SUR.:0.42*0.42m	Shielding Angle:

DATA OF LAMP		PHOTOMETRIC DATA Eff: 140.93 lm/W			
MODEL		I <sub>max</sub> (cd)	37353	S/MH (C0/180)	1.19
NOMINAL POWER (W)	500	LOR (%)	100.0	S/MH (C90/270)	1.24
RATED VOLTAGE (V)	277	TOTAL FLUX (lm)	69734	<input type="checkbox"/> UP, DN (C0-180)	0.5, 50.1
NOMINAL FLUX (lm)	69734	CIE CLASS	DIRECT	<input type="checkbox"/> UP, DN (C180-360)	0.5, 48.9
LAMPS INSIDE	1	<input type="checkbox"/> up (%)	1.0	CIBSE SHR NOM	1.25
TEST VOLTAGE (V)	277	<input type="checkbox"/> down (%)	99.0	CIBSE SHR MAX	1.25



C Range: 0 - 360DEG  
 C Interval: 45.0DEG  
 Test Speed: HIGH  
 Temperature: 27DEG  
 Operators: lianghaizhu  
 Test Date: 2023-04-27

Range: 0 - 180DEG  
 Interval: 1.0DEG  
 Test System: EVERFINE GO-2000A\_V1 SYSTEM V2.0.364  
 Humidity: 56%  
 Test Distance: 6.500m [K=1.0000]  
 Remarks:

## ZONAL FLUX DIAGRAM

## ZONAL FLUX DIAGRAM:

mm	C0	C45	C90	C135	C180	C225	C270	C315	mm	□ zone	□ total	%lum, lamp
10	3702	3688	3658	3622	3622	3627	3647	3660	0- 10	3514	3514	4.96,4.96
20	3561	3546	3515	3463	3451	3469	3496	3514	10- 20	10140	13654	19.3,19.3
30	3244	3254	3230	3124	3075	3154	3195	3195	20- 30	15558	29212	41.2,41.2
40	2273	2291	2377	2165	2051	2197	2322	2228	30- 40	17351	46563	65.7,65.7
50	1118	1111	1061	1075	1013	1046	1052	1082	40- 50	12339	58903	83.1,83.1
60	504.2	500.2	443.9	491.5	454.2	475.5	438.2	489.7	50- 60	6537	65440	92.4,92.4
70	215.8	210.3	184.1	206.1	194.4	198.4	182.7	204.4	60- 70	3153	68592	96.8,96.8
80	68.45	62.63	56.52	62.98	60.59	62.61	58.27	63.09	70- 80	1299	69891	98.7,98.7
90	3.711	3.661	3.736	4.146	4.474	4.109	3.602	3.522	80- 90	265.4	70157	99,99
100	4.209	4.200	4.262	4.484	4.660	4.393	4.085	4.023	90-100	43.56	70200	99.1,99.1
110	5.630	5.820	5.902	5.918	5.795	5.684	5.670	5.501	100-110	51.20	70251	99.2,99.2
120	8.912	9.131	9.281	9.263	9.130	8.998	8.988	8.736	110-120	72.70	70324	99.3,99.3
130	12.66	12.88	13.04	13.04	12.95	12.73	12.75	12.43	120-130	97.60	70422	99.4,99.4
140	16.35	16.54	16.62	16.71	16.76	16.46	16.48	16.18	130-140	113.2	70535	99.6,99.6
150	19.75	19.92	19.93	20.07	20.34	20.00	19.96	19.70	140-150	114.2	70649	99.7,99.7
160	23.33	23.40	23.53	23.47	24.08	23.66	23.69	23.35	150-160	100.1	70749	99.9,99.9
170	27.01	26.85	27.00	26.81	27.50	27.03	27.18	26.79	160-170	71.37	70821	100,100
180	28.89	28.60	28.73	28.46	28.94	28.55	28.76	28.42	170-180	26.53	70847	100,100
DEG	LUMINOUS INTENSITY:×10cd									UNIT:lm		

Conical surface Flux(90deg): 53601 lm

%lum = 75.7%

%lamp = 75.7%

Conical surface Flux(120deg): 65440 lm

%lum = 92.4%

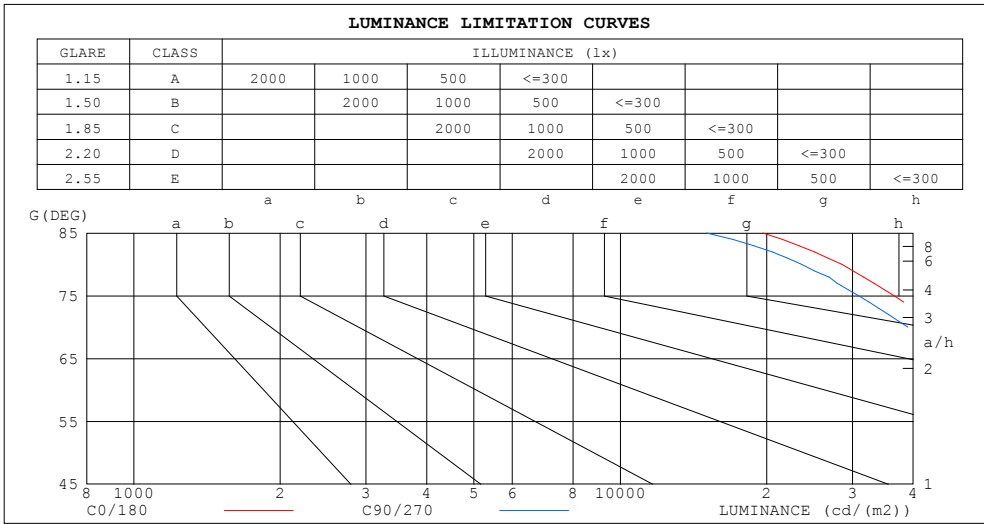
%lamp = 92.4%

C Range: 0 - 360DEG  
 C Interval: 45.0DEG  
 Test Speed: HIGH  
 Temperature:27DEG  
 Operators:lianghaizhu  
 Test Date:2023-04-27

□ Range: 0 - 180DEG  
 □ Interval: 1.0DEG  
 Test System:EVERFINE GO-2000A\_V1 SYSTEM V2.0.364  
 Humidity:56%  
 Test Distance:6.500m [K=1.0000]  
 Remarks:

LUMINANCE LIMITATION CURVES

Test:U:277.6V I:1.769A P:494.8W PF:0.9937 Freq:59.98Hz Lamp Flux:69734x1 lm		
NAME: ASD-UHB3HV-500ADAC-BK500W-3000K	TYPE:	WEIGHT:
SPEC.:	DIM.:	SERIAL No.:
MFR.: ASD Lighting Corp.	SUR.:0.42*0.42m	Shielding Angle:



LUMINANCE cd/(m2)		
G (DEG)	C0/180	C90/270
85	19631	15041
80	28563	23585
75	36524	30914
70	45720	39013
65	57039	49270
60	73079	64326
55	95578	86523
50	125992	119555
45	167440	169872

C Range: 0 - 360DEG  
 C Interval: 45.0DEG  
 Test Speed: HIGH  
 Temperature:27DEG  
 Operators:lianghaizhu  
 Test Date:2023-04-27

Range: 0 - 180DEG  
 Interval: 1.0DEG  
 Test System:EVERFINE GO-2000A\_V1 SYSTEM V2.0.364  
 Humidity:56%  
 Test Distance:6.500m [K=1.0000]  
 Remarks:

WEC AND CCEC

Test:U:277.6V I:1.769A P:494.8W PF:0.9937 Freq:59.98Hz Lamp Flux:69734x1 lm		
NAME: ASD-UHB3HV-500ADAC-BK500W-3000K	TYPE:	WEIGHT:
SPEC.:	DIM.:	SERIAL No.:
MFR.: ASD Lighting Corp.	SUR.:0.42*0.42m	Shielding Angle:

<input type="checkbox"/> cc	80%	70%	50%	30%	10%	0
<input type="checkbox"/> w	50% 30% 10%	50% 30% 10%	50% 30% 10%	50% 30% 10%	50% 30% 10%	0
<input type="checkbox"/> fc	20%	20%	20%	20%	20%	0
RCR	RCR:Room Cavity Ratio		Wall Exitance Coefficients (WEC)			
0.0						
1.0	.234 .133 .042	.227 .130 .041	.214 .123 .039	.201 .116 .037	.190 .110 .036	
2.0	.227 .124 .038	.221 .122 .037	.209 .116 .036	.198 .111 .035	.189 .107 .034	
3.0	.216 .115 .034	.210 .113 .034	.200 .109 .033	.191 .105 .032	.182 .101 .031	
4.0	.204 .106 .031	.199 .104 .031	.190 .101 .030	.182 .098 .029	.174 .095 .029	
5.0	.193 .098 .028	.188 .097 .028	.180 .094 .028	.173 .091 .027	.166 .089 .027	
6.0	.182 .091 .026	.178 .090 .026	.171 .088 .026	.164 .085 .025	.158 .083 .025	
7.0	.172 .085 .024	.169 .084 .024	.162 .082 .024	.156 .080 .023	.151 .078 .023	
8.0	.163 .080 .022	.160 .079 .022	.154 .077 .022	.149 .075 .022	.144 .074 .021	
9.0	.154 .075 .021	.152 .074 .021	.146 .072 .021	.142 .071 .020	.137 .070 .020	
10.0	.147 .070 .020	.144 .070 .019	.140 .068 .019	.135 .067 .019	.131 .066 .019	

<input type="checkbox"/> cc	80%	70%	50%	30%	10%	0
<input type="checkbox"/> w	50% 30% 10%	50% 30% 10%	50% 30% 10%	50% 30% 10%	50% 30% 10%	0
<input type="checkbox"/> fc	20%	20%	20%	20%	20%	0
RCR	RCR:Room Cavity Ratio		Ceiling Cavity Exitance Coefficients (CCEC)			
0.0	.198 .198 .198	.169 .169 .169	.115 .115 .115	.066 .066 .066	.021 .021 .021	
1.0	.183 .164 .148	.156 .141 .127	.107 .097 .088	.062 .056 .051	.020 .018 .017	
2.0	.171 .140 .113	.147 .120 .098	.100 .083 .068	.058 .048 .040	.019 .016 .013	
3.0	.162 .122 .090	.139 .105 .078	.095 .073 .054	.055 .043 .032	.018 .014 .011	
4.0	.153 .108 .073	.132 .093 .063	.090 .065 .044	.052 .038 .026	.017 .012 .009	
5.0	.146 .097 .060	.125 .084 .053	.086 .058 .037	.050 .034 .022	.016 .011 .007	
6.0	.139 .088 .051	.120 .076 .045	.083 .053 .032	.048 .031 .019	.015 .010 .006	
7.0	.133 .081 .045	.114 .070 .039	.079 .049 .028	.046 .029 .016	.015 .009 .005	
8.0	.127 .075 .039	.110 .065 .034	.076 .046 .024	.044 .027 .014	.014 .009 .005	
9.0	.122 .070 .035	.105 .061 .031	.073 .043 .022	.042 .025 .013	.014 .008 .004	
10.0	.117 .066 .032	.101 .057 .028	.070 .040 .020	.041 .024 .012	.013 .008 .004	

C Range: 0 - 360DEG  
 C Interval: 45.0DEG  
 Test Speed: HIGH  
 Temperature:27DEG  
 Operators:lianghaizhu  
 Test Date:2023-04-27

Range: 0 - 180DEG  
 Interval: 1.0DEG  
 Test System:EVERFINE GO-2000A\_V1 SYSTEM V2.0.364  
 Humidity:56%  
 Test Distance:6.500m [K=1.0000]  
 Remarks:

UGR(Unified Glare Rating) Table

Test:U:277.6V I:1.769A P:494.8W PF:0.9937 Freq:59.98Hz Lamp Flux:69734x1 lm		
NAME: ASD-UHB3HV-500ADAC-BK500W-3000K	TYPE:	WEIGHT:
SPEC.:	DIM.:	SERIAL No.:
MFR.: ASD Lighting Corp.	SUR.:0.42*0.42m	Shielding Angle:

ceiling/cavity	0.7	0.7	0.5	0.5	0.3	0.7	0.7	0.5	0.5	0.3
walls	0.5	0.3	0.5	0.3	0.3	0.5	0.3	0.5	0.3	0.3
working plane	0.2	0.2	0.2	0.2	0.2	0.2	0.2	0.2	0.2	0.2
Room dimensions	Viewed crosswise					Viewed endwise				
x = 2H y = 2H	28.0	29.3	28.3	29.5	29.7	27.9	29.1	28.1	29.3	29.6
3H	28.3	29.5	28.6	29.7	30.0	28.1	29.2	28.4	29.5	29.7
4H	28.4	29.5	28.7	29.8	30.0	28.1	29.2	28.5	29.5	29.7
6H	28.4	29.4	28.8	29.7	30.0	28.1	29.2	28.5	29.4	29.7
8H	28.4	29.4	28.8	29.7	30.0	28.1	29.1	28.5	29.4	29.7
12H	28.4	29.3	28.7	29.6	29.9	28.1	29.0	28.4	29.3	29.6
4H 2H	28.1	29.2	28.4	29.4	29.7	28.0	29.0	28.3	29.3	29.6
3H	28.5	29.5	28.9	29.7	30.1	28.3	29.2	28.7	29.5	29.8
4H	28.7	29.5	29.0	29.8	30.2	28.4	29.3	28.8	29.6	29.9
6H	28.7	29.5	29.1	29.8	30.2	28.5	29.2	28.9	29.6	29.9
8H	28.8	29.4	29.2	29.8	30.2	28.5	29.1	28.9	29.5	29.9
12H	28.7	29.4	29.2	29.8	30.2	28.4	29.1	28.9	29.5	29.9
8H 4H	28.6	29.3	29.1	29.7	30.1	28.4	29.1	28.8	29.5	29.9
6H	28.8	29.3	29.2	29.8	30.2	28.5	29.1	28.9	29.5	29.9
8H	28.8	29.3	29.3	29.7	30.2	28.5	29.0	29.0	29.5	29.9
12H	28.8	29.2	29.3	29.7	30.2	28.5	28.9	29.0	29.4	29.9
12H 4H	28.6	29.2	29.0	29.6	30.0	28.4	29.0	28.8	29.4	29.8
6H	28.7	29.2	29.2	29.7	30.1	28.5	29.0	28.9	29.4	29.9
8H	28.8	29.2	29.3	29.7	30.2	28.5	28.9	29.0	29.4	29.9
Variations with the observer position at spacings:										
S = 1.0H	+ 1.0 / - 1.4					+ 1.1 / - 1.7				
1.5H	+ 1.1 / - 1.0					+ 1.3 / - 1.1				
2.0H	+ 2.2 / - 1.7					+ 2.4 / - 1.8				

CIE Pub.117, 70847 lm Total Lamp Luminous Flux Corrected (8log(F/F0) = 14.8)

C Range: 0 - 360DEG  
 C Interval: 45.0DEG  
 Test Speed: HIGH  
 Temperature:27DEG  
 Operators:lianghaizhu  
 Test Date:2023-04-27

Range: 0 - 180DEG  
 Interval: 1.0DEG  
 Test System:EVERFINE GO-2000A\_V1 SYSTEM V2.0.364  
 Humidity:56%  
 Test Distance:6.500m [K=1.0000]  
 Remarks:

## UTILIZATION FACTORS TABLE

Test:U:277.6V I:1.769A P:494.8W PF:0.9937 Freq:59.98Hz Lamp Flux:69734x1 lm		
NAME: ASD-UHB3HV-500ADAC-BK500W-3000K	TYPE:	WEIGHT:
SPEC.:	DIM.:	SERIAL No.:
MFR.: ASD Lighting Corp.	SUR.:0.42*0.42m	Shielding Angle:

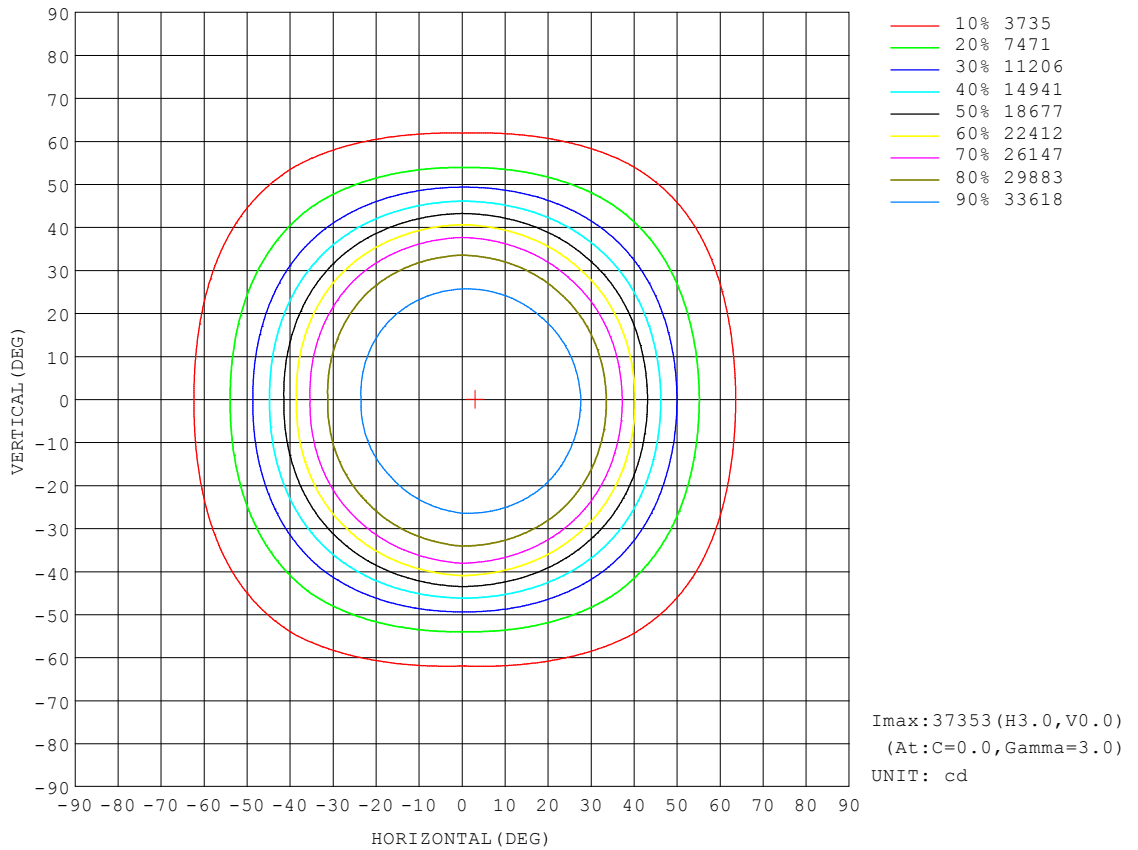
REFLECTANCE										
Ceiling	0.8	0.8	0.8	0.7	0.7	0.7	0.5	0.5	0.5	0
Walls	0.7	0.5	0.3	0.7	0.5	0.3	0.7	0.5	0.3	0
Working plane	0.2	0.2	0.2	0.2	0.2	0.2	0.2	0.2	0.2	0
ROOM INDEX	UTILIZATION FACTORS (PERCENT) $k(RI) \times RCR = 5$									
k = 0.60	70	60	55	69	60	55	68	60	55	49
0.80	80	70	65	79	70	65	77	69	64	59
1.00	87	78	73	86	78	73	84	78	72	66
1.25	93	85	80	92	84	79	89	83	79	73
1.50	97	90	85	95	89	84	93	87	83	77
2.00	102	96	91	100	95	90	97	92	89	82
2.50	105	99	95	103	98	94	99	95	92	84
3.00	107	102	98	105	101	97	101	98	95	87
4.00	110	106	103	108	104	101	104	101	98	90
5.00	112	108	105	109	106	104	105	103	100	92
ROOM INDEX	UF(total)									Direct
According to DIN EN 13032-2 2004			Suspended				SHRNOM = 1.25			

C Range: 0 - 360DEG  
 C Interval: 45.0DEG  
 Test Speed: HIGH  
 Temperature:27DEG  
 Operators:lianghaizhu  
 Test Date:2023-04-27

Range: 0 - 180DEG  
 Interval: 1.0DEG  
 Test System:EVERFINE GO-2000A\_V1 SYSTEM V2.0.364  
 Humidity:56%  
 Test Distance:6.500m [K=1.0000]  
 Remarks:

ISOCANDELA DIAGRAM

Test:U:277.6V I:1.769A P:494.8W PF:0.9937 Freq:59.98Hz Lamp Flux:69734x1 lm		
NAME: ASD-UHB3HV-500ADAC-BK500W-3000K	TYPE:	WEIGHT:
SPEC.:	DIM.:	SERIAL No.:
MFR.: ASD Lighting Corp.	SUR.:0.42*0.42m	Shielding Angle:

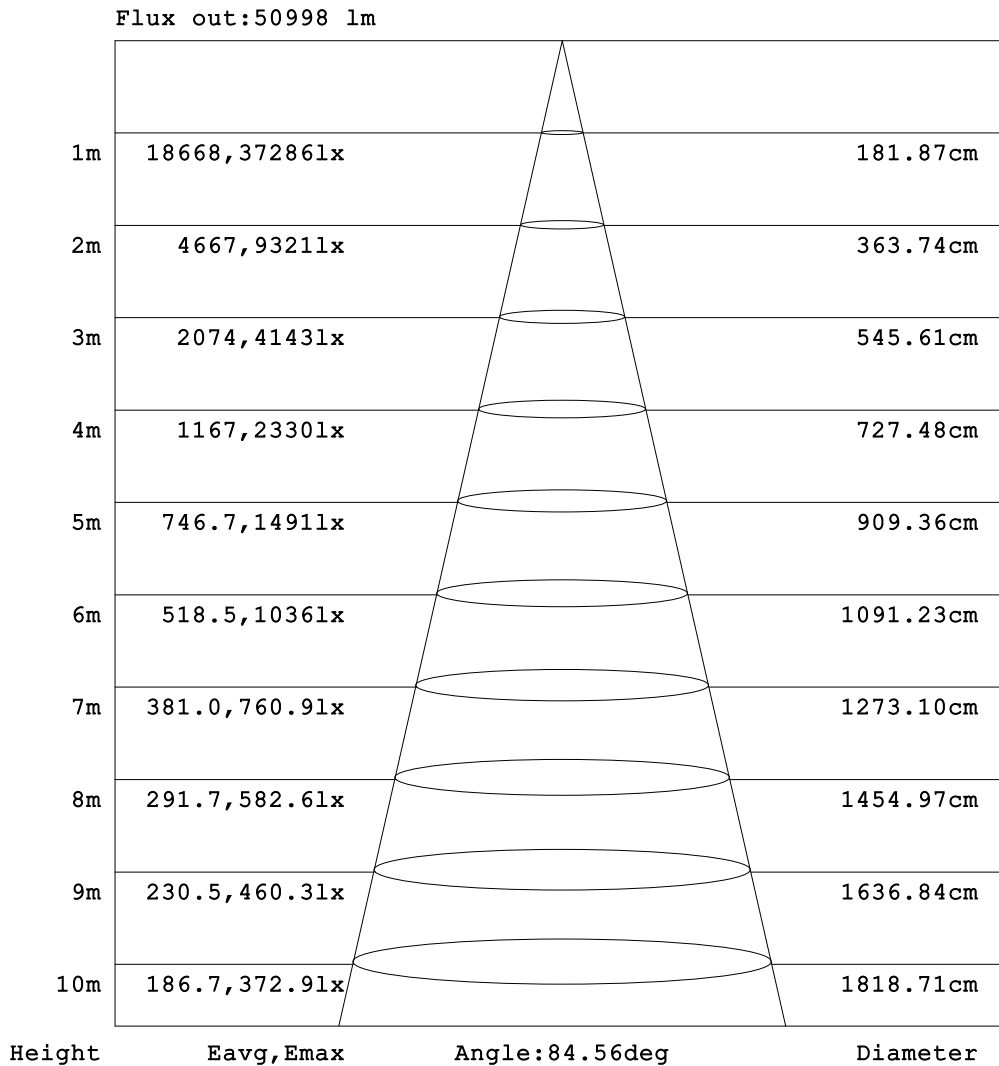


C Range: 0 - 360DEG  
 C Interval: 45.0DEG  
 Test Speed: HIGH  
 Temperature: 27DEG  
 Operators: lianghaizhu  
 Test Date: 2023-04-27

Range: 0 - 180DEG  
 Interval: 1.0DEG  
 Test System: EVERFINE GO-2000A\_V1 SYSTEM V2.0.364  
 Humidity: 56%  
 Test Distance: 6.500m [K=1.0000]  
 Remarks:

AAI Figure

Test:U:277.6V I:1.769A P:494.8W PF:0.9937 Freq:59.98Hz Lamp Flux:69734x1 lm		
NAME: ASD-UHB3HV-500ADAC-BK500W-3000K	TYPE:	WEIGHT:
SPEC.:	DIM.:	SERIAL No.:
MFR.: ASD Lighting Corp.	SUR.:0.42*0.42m	Shielding Angle:



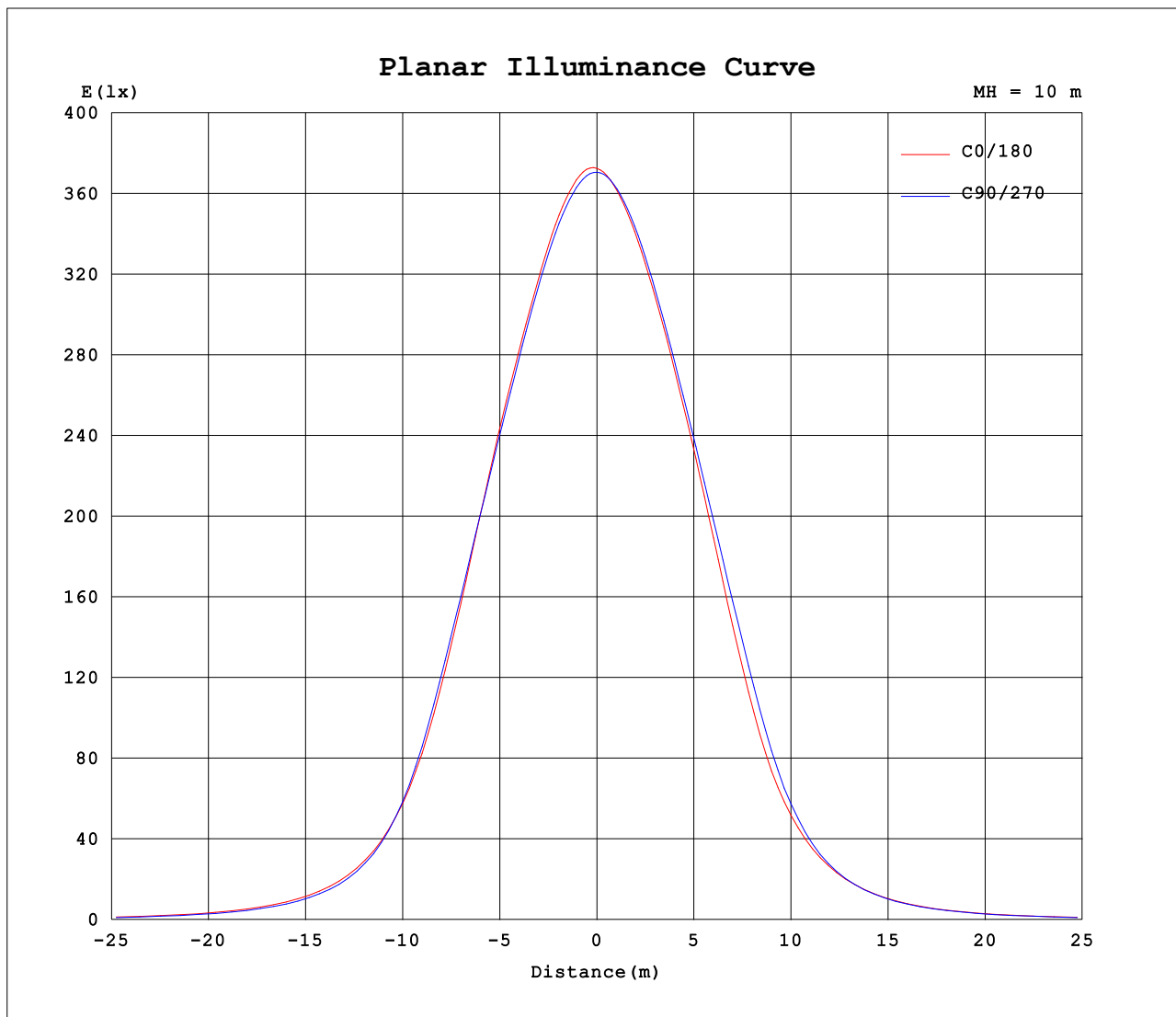
Note:The Curves indicate the illuminated area and the average illumination when the luminaire is at different distance.

C Range: 0 - 360DEG  
 C Interval: 45.0DEG  
 Test Speed: HIGH  
 Temperature:27DEG  
 Operators:lianghaizhu  
 Test Date:2023-04-27

Range: 0 - 180DEG  
 Interval: 1.0DEG  
 Test System:EVERFINE GO-2000A\_V1 SYSTEM V2.0.364  
 Humidity:56%  
 Test Distance:6.500m [K=1.0000]  
 Remarks:



### Planar Illuminance Curve



C Range: 0 - 360DEG  
C Interval: 45.0DEG  
Test Speed: HIGH  
Temperature: 27DEG  
Operators: lianghaizhu  
Test Date: 2023-04-27

Range: 0 - 180DEG  
 Interval: 1.0DEG  
Test System: EVERFINE GO-2000A\_V1 SYSTEM V2.0.364  
Humidity: 56%  
Test Distance: 6.500m [K=1.0000]  
Remarks:

LUMINOUS DISTRIBUTION INTENSITY DATA

Test:U:277.6V I:1.769A P:494.8W PF:0.9937 Freq:59.98Hz Lamp Flux:69734x1 lm		
NAME: ASD-UHB3HV-500ADAC-BK500W-3000K	TYPE:	WEIGHT:
SPEC.:	DIM.:	SERIAL No.:
MFR.: ASD Lighting Corp.	SUR.:0.42*0.42m	Shielding Angle:

Table--1

UNIT: x10cd

C (DEG) □ (DEG)	0	45	90	135	180	225	270	315										
0	3725	3716	3706	3698	3725	3716	3706	3698										
5	3732	3718	3695	3671	3684	3682	3689	3695										
10	3702	3688	3658	3622	3622	3627	3647	3660										
15	3644	3635	3600	3552	3546	3555	3584	3598										
20	3561	3546	3515	3463	3451	3469	3496	3514										
25	3454	3432	3404	3339	3315	3352	3381	3401										
30	3244	3254	3230	3124	3075	3154	3195	3195										
35	2855	2898	2920	2754	2653	2791	2873	2815										
40	2273	2291	2377	2165	2051	2197	2322	2228										
45	1634	1630	1658	1554	1468	1544	1628	1588										
50	1118	1111	1061	1075	1013	1046	1052	1082										
55	757	749	685	733	685	714	676	734										
60	504	500	444	491	454	475	438	490										
65	333	328	287	321	299	310	285	320										
70	216	210	184	206	194	198	183	204										
75	130	124	110	122	117	120	110	122										
80	68.4	62.6	56.5	63.0	60.6	62.6	58.3	63.1										
85	23.6	20.3	18.1	20.3	20.2	21.5	20.1	21.3										
90	3.71	3.66	3.74	4.15	4.47	4.11	3.60	3.52										
95	3.83	3.80	3.87	4.18	4.41	4.12	3.72	3.65										
100	4.21	4.20	4.26	4.48	4.66	4.39	4.08	4.02										
105	4.69	4.75	4.81	4.95	4.91	4.79	4.59	4.55										
110	5.63	5.82	5.90	5.92	5.79	5.68	5.67	5.50										
115	7.18	7.40	7.51	7.52	7.39	7.26	7.26	7.04										
120	8.91	9.13	9.28	9.26	9.13	9.00	8.99	8.74										
125	10.8	11.0	11.1	11.1	11.0	10.8	10.8	10.5										
130	12.7	12.9	13.0	13.0	12.9	12.7	12.7	12.4										
135	14.5	14.7	14.9	14.9	14.9	14.6	14.6	14.3										
140	16.4	16.5	16.6	16.7	16.8	16.5	16.5	16.2										
145	18.1	18.3	18.3	18.4	18.6	18.3	18.2	18.0										
150	19.7	19.9	19.9	20.1	20.3	20.0	20.0	19.7										
155	21.5	21.6	21.7	21.8	22.1	21.8	21.8	21.5										
160	23.3	23.4	23.5	23.5	24.1	23.7	23.7	23.4										
165	25.2	25.2	25.4	25.2	25.9	25.5	25.6	25.2										
170	27.0	26.8	27.0	26.8	27.5	27.0	27.2	26.8										
175	28.3	28.1	28.2	28.0	28.6	28.1	28.3	27.9										
180	28.9	28.6	28.7	28.5	28.9	28.5	28.8	28.4										

C Range: 0 - 360DEG  
 C Interval: 45.0DEG  
 Test Speed: HIGH  
 Temperature:27DEG  
 Operators:lianghaizhu  
 Test Date:2023-04-27

□ Range: 0 - 180DEG  
 □ Interval: 1.0DEG  
 Test System:EVERFINE GO-2000A\_V1 SYSTEM V2.0.364  
 Humidity:56%  
 Test Distance:6.500m [K=1.0000]  
 Remarks: