

# ASD<sup>®</sup> LED STEP LIGHT

► **DESIGN & OPTIONS** - LED STEP LIGHT has a sleek, low-profile design with no visible hardware, allowing it to seamlessly blend into any architecture. It features a corrosion resistant steel body and an integrated LED to adequately illuminate with no glare. It also has smooth dimming capabilities ranging from 100% to 10% with modern LED dimmers, and an 85° beam angle that grants you uniform lighting. Models with built-in photocell and motion sensor are also available. The built-in photocell will automatically turn the fixture on/off depending on the time of day. When no motion is detected the built-in PIR motion sensor will turn off the fixture as well. It comes in a BLACK, WHITE or BRONZE finish.

► **INSTALLATION** - Installation is quick and easy; just attach the fixture to the outlet box, connect the wires, and cover it with the face plate. It also includes a rubber gasket to seal against moisture. For outdoor applications where the fixture will face harsh weather and lots of rains, consider applying silicone caulking for water seal enhancement. Screws, wire nuts and all necessary installation accessories are provided. Refer to install instructions for detailed steps.

► **APPLICATION** - LED STEP LIGHTS are an ideal maintenance free solution for residential and commercial applications. This fixture creates a cozy ambience that is great for indoor and outdoor projects such as stairways, pathways, driveways, patios, corridors, decks, balconies, walkways, building perimeters or anywhere else landscape lighting is required. The fixture is Wet location rated and suitable for severe weather conditions.

► **ENERGY SAVING & EFFICIENCY** - Replacing an incandescent fixture with the LED STEP LIGHT can save you 8 times as much on your current energy costs. With a lifespan of 50,000 hours, these fixtures are made to last decades under normal operation! This fixture will save you a significant amount of money in its lifetime.

► **CERTIFICATION & WARRANTY** - Buy with confidence: ASD provides a 5-year warranty along with ETL certification to guarantee top quality products and safety!

Catalog number	
Notes	
Type	



Finish:	White
	Bronze
	Black



## PRODUCT LEGEND:

Family	Orientation	Series	Location	Dimmable	Watts	CCT	Options		Finish
ASD-LSTL	X	01	X	X	X	XX	XX	XX	XX
LED Step Light	H = Horizontal		W = Wet	D = Dimmable N = Non dimmable	3 = 3 W	30 = 3,000 K 40 = 4,000 K 50 = 5,000 K	Blank = No option PC = Photocell	Blank = No option MS = Motion sensor	BK = Black BZ = Oil Rubbed Bronze WH = White

## LED STEP LIGHT:

Model	Watts	Voltage	Dimmable	Lumens	CCT	Options	Finish	Dimensions (LxWxH)
ASD-LSTL-H01W-D330-BK	3 W	120 V	TRIAC	100 lm	3,000 K	-	Black	4 3/4" x 1 1/2" x 2 7/8"
ASD-LSTL-H01W-D340-BK	3 W	120 V	TRIAC	100 lm	4,000 K	-	Black	4 3/4" x 1 1/2" x 2 7/8"
ASD-LSTL-H01W-D350-BK	3 W	120 V	TRIAC	100 lm	5,000 K	-	Black	4 3/4" x 1 1/2" x 2 7/8"
ASD-LSTL-H01W-D330-BZ	3 W	120 V	TRIAC	100 lm	3,000 K	-	Oil Rubbed Bronze	4 3/4" x 1 1/2" x 2 7/8"
ASD-LSTL-H01W-D340-BZ	3 W	120 V	TRIAC	100 lm	4,000 K	-	Oil Rubbed Bronze	4 3/4" x 1 1/2" x 2 7/8"
ASD-LSTL-H01W-D350-BZ	3 W	120 V	TRIAC	100 lm	5,000 K	-	Oil Rubbed Bronze	4 3/4" x 1 1/2" x 2 7/8"
ASD-LSTL-H01W-D330-WH	3 W	120 V	TRIAC	100 lm	3,000 K	-	White	4 3/4" x 1 1/2" x 2 7/8"
ASD-LSTL-H01W-D340-WH	3 W	120 V	TRIAC	100 lm	4,000 K	-	White	4 3/4" x 1 1/2" x 2 7/8"
ASD-LSTL-H01W-D350-WH	3 W	120 V	TRIAC	100 lm	5,000 K	-	White	4 3/4" x 1 1/2" x 2 7/8"
ASD-LSTL-H01W-N330-PC-BZ	3 W	120 V	NO	100 lm	3,000 K	Photocell	Oil Rubbed Bronze	4 3/4" x 1 1/2" x 2 7/8"
ASD-LSTL-H01W-N340-PC-BZ	3 W	120 V	NO	100 lm	4,000 K	Photocell	Oil Rubbed Bronze	4 3/4" x 1 1/2" x 2 7/8"
ASD-LSTL-H01W-N350-PC-BZ	3 W	120 V	NO	100 lm	5,000 K	Photocell	Oil Rubbed Bronze	4 3/4" x 1 1/2" x 2 7/8"
ASD-LSTL-H01W-N330-PC-MS-BZ	3 W	120 V	NO	100 lm	3,000 K	Photocell and Motion sensor	Oil Rubbed Bronze	4 3/4" x 1 1/2" x 2 7/8"
ASD-LSTL-H01W-N340-PC-MS-BZ	3 W	120 V	NO	100 lm	4,000 K	Photocell and Motion sensor	Oil Rubbed Bronze	4 3/4" x 1 1/2" x 2 7/8"
ASD-LSTL-H01W-N350-PC-MS-BZ	3 W	120 V	NO	100 lm	5,000 K	Photocell and Motion sensor	Oil Rubbed Bronze	4 3/4" x 1 1/2" x 2 7/8"

For most up-to-date spec sheets please refer to [asd-lighting.com](http://asd-lighting.com)



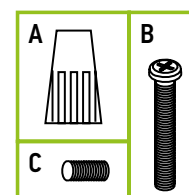
# LED STEP LIGHT

## PRODUCT SPECIFICATIONS:

Construction & Materials							
Housing	Steel						
Lens	Acrylic						
Finish Color	Oil Rubbed Bronze, White						
Weight	ASD-LSTL-H01W-D330-BK	0.5 lb (0.2 kg)	ASD-LSTL-H01W-D330-BZ	0.5 lb (0.2 kg)	ASD-LSTL-H01W-N330-PC-BZ	0.4 lb (0.2 kg)	
	ASD-LSTL-H01W-D340-BK		ASD-LSTL-H01W-D340-BZ		ASD-LSTL-H01W-N340-PC-BZ		
	ASD-LSTL-H01W-D350-BK		ASD-LSTL-H01W-D350-BZ		ASD-LSTL-H01W-N350-PC-BZ		
			ASD-LSTL-H01W-D330-WH		ASD-LSTL-H01W-N330-PC-MS-BZ		
			ASD-LSTL-H01W-D340-WH		ASD-LSTL-H01W-N340-PC-MS-BZ		
			ASD-LSTL-H01W-D350-WH		ASD-LSTL-H01W-N350-PC-MS-BZ		
Environmental System							
Work Environment	Suitable for Wet Locations						
Operating Temperature	ASD-LSTL-H01W-D330-BK	-40°F to 113°F (-40°C to 45°C)	ASD-LSTL-H01W-D330-BZ	-40°F to 113°F (-40°C to 45°C)	ASD-LSTL-H01W-N330-PC-BZ	-4°F to 113°F (-20°C to 45°C)	
	ASD-LSTL-H01W-D340-BK		ASD-LSTL-H01W-D340-BZ		ASD-LSTL-H01W-N340-PC-BZ		
	ASD-LSTL-H01W-D350-BK		ASD-LSTL-H01W-D350-BZ		ASD-LSTL-H01W-N350-PC-BZ		
			ASD-LSTL-H01W-D330-WH		ASD-LSTL-H01W-N330-PC-MS-BZ		
			ASD-LSTL-H01W-D340-WH		ASD-LSTL-H01W-N340-PC-MS-BZ		
		ASD-LSTL-H01W-D350-WH	ASD-LSTL-H01W-N350-PC-MS-BZ				
L-70 Life	> 50,000 hrs						
Optical System							
Luminous Flux	100 lm						
Color Temperature	3,000 K; 4,000 K; 5,000 K						
CRI	> 80						
Electrical System							
Input Voltage	120 V						
Max input current	ASD-LSTL-H01W-D330-BK	0.63 A	ASD-LSTL-H01W-D330-BZ	0.63 A	ASD-LSTL-H01W-N330-PC-BZ	0.1 A	
	ASD-LSTL-H01W-D340-BK		ASD-LSTL-H01W-D340-BZ		ASD-LSTL-H01W-N340-PC-BZ		
	ASD-LSTL-H01W-D350-BK		ASD-LSTL-H01W-D350-BZ		ASD-LSTL-H01W-N350-PC-BZ		
			ASD-LSTL-H01W-D330-WH		ASD-LSTL-H01W-N330-PC-MS-BZ		
			ASD-LSTL-H01W-D340-WH		ASD-LSTL-H01W-N340-PC-MS-BZ		
			ASD-LSTL-H01W-D350-WH		ASD-LSTL-H01W-N350-PC-MS-BZ		
Inrush current (Action time)	ASD-LSTL-H01W-D330-BK	0.027 A (0.002 S)	ASD-LSTL-H01W-D330-BZ	0.027 A (0.002 S)	ASD-LSTL-H01W-N330-PC-BZ	0.5 A (0.1 S)	
	ASD-LSTL-H01W-D340-BK		ASD-LSTL-H01W-D340-BZ		ASD-LSTL-H01W-N340-PC-BZ		
	ASD-LSTL-H01W-D350-BK		ASD-LSTL-H01W-D350-BZ		ASD-LSTL-H01W-N350-PC-BZ		
			ASD-LSTL-H01W-D330-WH		ASD-LSTL-H01W-N330-PC-MS-BZ		
			ASD-LSTL-H01W-D340-WH		ASD-LSTL-H01W-N340-PC-MS-BZ		
			ASD-LSTL-H01W-D350-WH		ASD-LSTL-H01W-N350-PC-MS-BZ		
AC input range	min 114 V max 126 V						
Off State Power	0 W						
Power Consumption	3 W						
Power Factor	> 0.9						
Output voltage	ASD-LSTL-H01W-D330-BK	12-20 V	ASD-LSTL-H01W-D330-BZ	12-20 V	ASD-LSTL-H01W-N330-PC-BZ	15-20 V	
	ASD-LSTL-H01W-D340-BK		ASD-LSTL-H01W-D340-BZ		ASD-LSTL-H01W-N340-PC-BZ		
	ASD-LSTL-H01W-D350-BK		ASD-LSTL-H01W-D350-BZ		ASD-LSTL-H01W-N350-PC-BZ		
			ASD-LSTL-H01W-D330-WH		ASD-LSTL-H01W-N330-PC-MS-BZ		
			ASD-LSTL-H01W-D340-WH		ASD-LSTL-H01W-N340-PC-MS-BZ		
			ASD-LSTL-H01W-D350-WH		ASD-LSTL-H01W-N350-PC-MS-BZ		
LED Driver Class	ASD-LSTL-H01W-D330-BK	DC	ASD-LSTL-H01W-D330-BZ	DC	ASD-LSTL-H01W-N330-PC-BZ	Class 2	
	ASD-LSTL-H01W-D340-BK		ASD-LSTL-H01W-D340-BZ		ASD-LSTL-H01W-N340-PC-BZ		
	ASD-LSTL-H01W-D350-BK		ASD-LSTL-H01W-D350-BZ		ASD-LSTL-H01W-N350-PC-BZ		
			ASD-LSTL-H01W-D330-WH		ASD-LSTL-H01W-N330-PC-MS-BZ		
			ASD-LSTL-H01W-D340-WH		ASD-LSTL-H01W-N340-PC-MS-BZ		
			ASD-LSTL-H01W-D350-WH		ASD-LSTL-H01W-N350-PC-MS-BZ		
Dimming range							
10-100%							
Dimming compatible controls							
Brand	Lutron						
Models	DVCL-153P	CTCL-153P	6672				
	TGCL-153P	PD-6WCL	6674				
Regular and Voluntary Certifications							
5-year limited warranty							
cETLus certified 4001256							

## PACKAGE CONTENTS:

Description	Q-ty
LED Step Light	1
Wire nut (A)	3
Screw (B)	2
Hexagon screw (C) only for LSTL-PC and LSTL-PC-MS	1
Box	1
Cut sheet	2



For most up-to-date spec sheets please refer to [asd-lighting.com](http://asd-lighting.com)



# LED STEP LIGHT

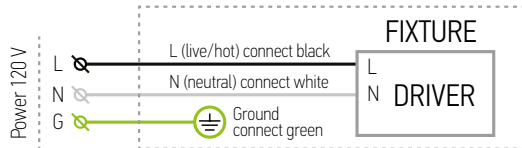
## INSTALLATION GUIDE

### IMPORTANT SAFETY INFORMATION:

Please read all the instructions below before installation.

- ▶ Make sure that the supply voltage corresponds to the rated product voltage.
- ▶ The product must be installed by a qualified electrician in accordance with the National Electrical Code and corresponding local codes.
- ▶ If the product is damaged, do not use it.

### ELECTRICAL SCHEMATIC DIAGRAM:



### PHOTOCELL SETTINGS:

The fixtures with a built-in photocell automatically turn off during daylight hours.

- The light is always ON when luminance is < 90 lux (night time).
- The light is always OFF when luminance is > 90 lux (day time).

### PHOTOCELL AND MOTION SENSOR SETTINGS:

The fixtures with a motion sensor have a built-in Dusk-to-Dawn sensor that automatically turns off the motion sensor during daylight hours regardless of motion detection.

- The light is ON when luminance < 90 lux (night time) and motion is detected for 30 seconds.
- The light is always OFF when luminance is > 90 lux (daytime).
- Max. detection range 26 ft.

### ⚠ WARNING

**RISK OF PERSONAL INJURY – READ and follow all WARNINGS and installation instructions.**

Keep or give to the owner for future reference.

**Risk of cuts:** Wear gloves to prevent cuts or abrasions when removing from carton, handling, installing, and maintaining this product.

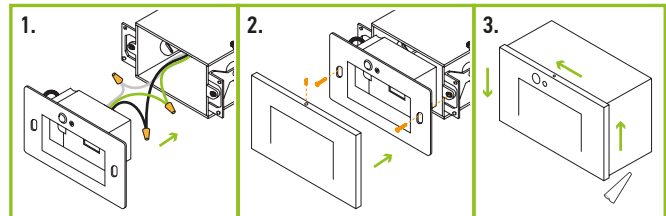
**Risk of electric shock:** This product must be installed in accordance with the applicable installation code by a person familiar with the construction and operation of the product and the hazards involved.

**Risk of Fire:** Minimum 194°F supply conductors. Consult a qualified electrician to ensure correct branch circuit conductor.

ASD® assumes no responsibility for claims arising out of improper or careless installation or handling of this product.

### INSTALLATION STEPS:

1. Pull the supply wires out from the outlet box. Connect the wires: Black to Black, White to White, Green to Green. Secure the connection with wire nuts. Tuck all the wires inside the outlet box.
2. Attach the mounting bracket to the outlet box using screws. Place the face plate on the mounting bracket and fix it with the hexagon screw.
3. For outdoor locations it is recommended to use silicone (not included) as shown in the picture below.



## ORDERING INFORMATION

Model	CCT	Options	Finish	UPC				
ASD-LSTL-H01W-D330-BK	3,000 K	-	Black	810050735469				
ASD-LSTL-H01W-D340-BK	4,000 K	-	Black	810050735476				
ASD-LSTL-H01W-D350-BK	5,000 K	-	Black	810050735483				
ASD-LSTL-H01W-D330-BZ	3,000 K	-	Oil Rubbed Bronze	810050732284				
ASD-LSTL-H01W-D340-BZ	4,000 K	-	Oil Rubbed Bronze	810050732291				
ASD-LSTL-H01W-D350-BZ	5,000 K	-	Oil Rubbed Bronze	810050732307				
ASD-LSTL-H01W-D330-WH	3,000 K	-	White	810050733199				
ASD-LSTL-H01W-D340-WH	4,000 K	-	White	810050733205				
ASD-LSTL-H01W-D350-WH	5,000 K	-	White	810050733212				
ASD-LSTL-H01W-N330-PC-BZ	3,000 K	Photocell	Oil Rubbed Bronze	810050733229				
ASD-LSTL-H01W-N340-PC-BZ	4,000 K	Photocell	Oil Rubbed Bronze	810050733236				
ASD-LSTL-H01W-N350-PC-BZ	5,000 K	Photocell	Oil Rubbed Bronze	810050733243				
ASD-LSTL-H01W-N330-PC-MS-BZ	3,000 K	Photocell and Motion sensor	Oil Rubbed Bronze	810050733250				
ASD-LSTL-H01W-N340-PC-MS-BZ	4,000 K	Photocell and Motion sensor	Oil Rubbed Bronze	810050733267				
ASD-LSTL-H01W-N350-PC-MS-BZ	5,000 K	Photocell and Motion sensor	Oil Rubbed Bronze	810050733274				
Model	Pcs in middle box	Middle box Size	Middle box Weight	GTIN 14 for Middle box	Pcs. per Carton	Carton Size	Carton Weight	GTIN 14 for Carton
ASD-LSTL-H01W-D330-BK	4	6.7" x 4.4" x 5.3"	2.2 lb	10810050735466	24	14.2" x 7.3" x 11.4"	15.3 lb	20810050735463
ASD-LSTL-H01W-D340-BK	4	6.7" x 4.4" x 5.3"	2.2 lb	10810050735473	24	14.2" x 7.3" x 11.4"	15.3 lb	30810050735477
ASD-LSTL-H01W-D350-BK	4	6.7" x 4.4" x 5.3"	2.2 lb	10810050735480	24	14.2" x 7.3" x 11.4"	15.3 lb	30810050735484
ASD-LSTL-H01W-D330-BZ	4	6.7" x 4.4" x 5.3"	2.2 lb	10810050732281	24	14.2" x 7.3" x 11.4"	15.3 lb	20810050732288
ASD-LSTL-H01W-D340-BZ	4	6.7" x 4.4" x 5.3"	2.2 lb	10810050732298	24	14.2" x 7.3" x 11.4"	15.3 lb	20810050732295
ASD-LSTL-H01W-D350-BZ	4	6.7" x 4.4" x 5.3"	2.2 lb	10810050732304	24	14.2" x 7.3" x 11.4"	15.3 lb	20810050732301
ASD-LSTL-H01W-D330-WH	4	6.7" x 4.4" x 5.3"	2.2 lb	10810050733196	24	14.2" x 7.3" x 11.4"	15.3 lb	20810050733193
ASD-LSTL-H01W-D340-WH	4	6.7" x 4.4" x 5.3"	2.2 lb	10810050733202	24	14.2" x 7.3" x 11.4"	15.3 lb	20810050733209
ASD-LSTL-H01W-D350-WH	4	6.7" x 4.4" x 5.3"	2.2 lb	10810050733219	24	14.2" x 7.3" x 11.4"	15.3 lb	20810050733216
ASD-LSTL-H01W-N330-PC-BZ	4	7.9" x 5.9" x 5.5"	2.1 lb	10810050733226	24	18.5" x 8.5" x 12"	13.6 lb	20810050733223
ASD-LSTL-H01W-N340-PC-BZ	4	7.9" x 5.9" x 5.5"	2.1 lb	10810050733233	24	18.5" x 8.5" x 12"	13.6 lb	20810050733230
ASD-LSTL-H01W-N350-PC-BZ	4	7.9" x 5.9" x 5.5"	2.1 lb	10810050733240	24	18.5" x 8.5" x 12"	13.6 lb	20810050733247
ASD-LSTL-H01W-N330-PC-MS-BZ	4	7.9" x 5.9" x 5.5"	2.1 lb	10810050733257	24	18.5" x 8.5" x 12"	13.6 lb	20810050733254
ASD-LSTL-H01W-N340-PC-MS-BZ	4	7.9" x 5.9" x 5.5"	2.1 lb	10810050733264	24	18.5" x 8.5" x 12"	13.6 lb	20810050733261
ASD-LSTL-H01W-N350-PC-MS-BZ	4	7.9" x 5.9" x 5.5"	2.1 lb	10810050733271	24	18.5" x 8.5" x 12"	13.6 lb	20810050733278

For most up-to-date spec sheets please refer to [asd-lighting.com](http://asd-lighting.com)