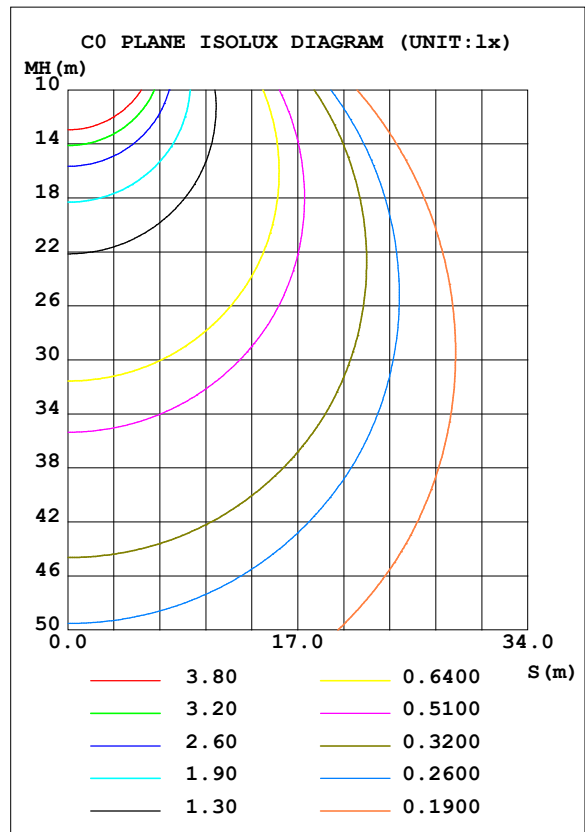
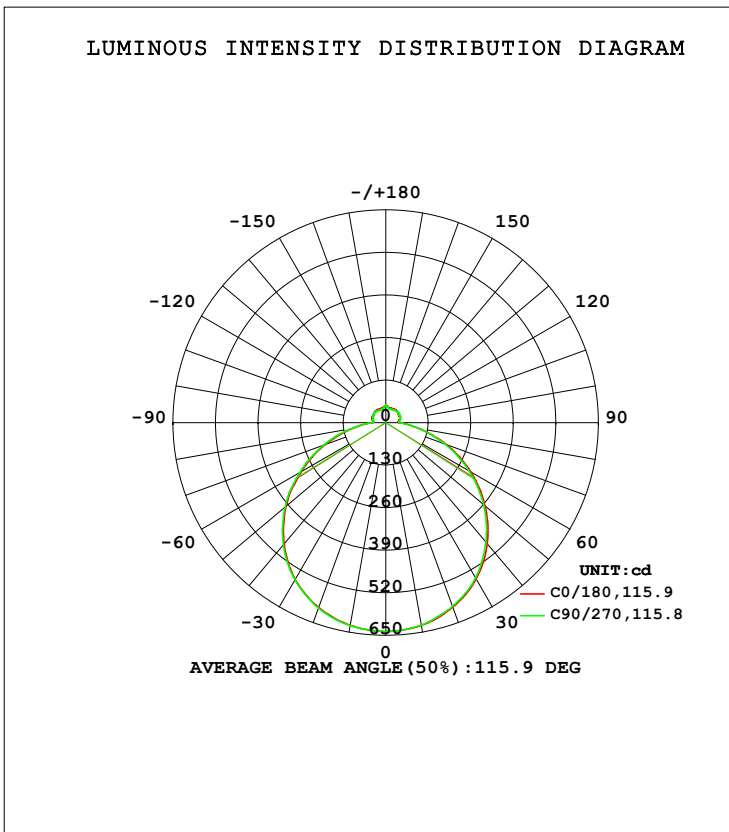


**LUMINAIRE PHOTOMETRIC TEST REPORT**

Test:U:120.27V I:0.3909A P:42.915W PF:0.9116 Freq:0Hz Lamp Flux:2230.9x1 lm		
NAME: ADS lighting Corp	TYPE:	WEIGHT:
SPEC.:ASD-LFC-WD-20D42-AC-4000K	DIM.:	SERIAL No.:
MFR.: ADS lighting Corp	SUR.:0.49*0.49	Shielding Angle:

DATA OF LAMP		PHOTOMETRIC DATA			
MODEL	ASD-LFC-WD-20D42-AC	Imax (cd)	639.2	S/MH (C0/180)	1.29
NOMINAL POWER (W)	--	LOR (%)	100.0	S/MH (C90/270)	1.29
RATED VOLTAGE (V)	--	TOTAL FLUX (lm)	2230.9	□ UP, DN (C0-180)	6.3, 43.4
NOMINAL FLUX (lm)	2230.9	CIE CLASS	SEMI-D.	□ UP, DN (C180-360)	6.0, 44.2
LAMPS INSIDE	1	□ up (%)	12.3	CIBSE SHR NOM	1.25
TEST VOLTAGE (V)	--	□ down (%)	87.7	CIBSE SHR MAX	1.35



C Range: 0 - 360DEG  
 C Interval: 22.5DEG  
 Test Speed: HIGH  
 Temperature: 25.3DEG  
 Operators: admin  
 Test Date: 2022-03-16

□ Range: 0 - 180DEG  
 □ Interval: 1.0DEG  
 Test System: EVERFINE GO-2000B\_V1 SYSTEM V2.00.411  
 Humidity: 65.0%  
 Test Distance: 8.780m [K=1.0000]  
 Remarks:

**ZONAL FLUX DIAGRAM**

ZONAL FLUX DIAGRAM:

mm	C0	C45	C90	C135	C180	C225	C270	C315	mm	□ zone	□ total	%lum, lamp
10	628.7	628.5	627.6	627.9	628.6	630.4	629.5	629.8	0- 10	60.47	60.47	2.71,2.71
20	600.1	598.7	597.1	597.8	600.6	602.4	602.8	601.7	10- 20	174.2	234.7	10.5,10.5
30	552.2	550.2	548.2	549.3	553.4	555.4	555.0	555.1	20- 30	266.8	501.5	22.5,22.5
40	482.6	478.2	476.0	478.7	483.4	486.3	487.4	486.6	30- 40	325.1	826.6	37.1,37.1
50	396.5	391.7	390.5	391.6	397.6	401.0	401.9	401.2	40- 50	340.1	1167	52.3,52.3
60	299.7	295.0	293.0	295.1	297.8	301.4	303.3	301.2	50- 60	311.2	1478	66.2,66.2
70	197.9	194.5	192.9	193.7	197.0	201.5	203.1	200.8	60- 70	245.4	1723	77.2,77.2
80	102.6	100.4	99.70	100.4	103.3	107.0	108.9	106.7	70- 80	157.2	1880	84.3,84.3
90	42.20	42.15	42.67	42.51	42.44	43.29	44.32	43.04	80- 90	74.98	1955	87.7,87.7
100	41.77	42.64	43.78	42.58	41.36	40.77	41.21	39.88	90-100	43.92	1999	89.6,89.6
110	46.26	45.55	46.00	45.12	45.35	43.22	42.93	42.60	100-110	45.72	2045	91.7,91.7
120	46.21	47.10	48.44	46.87	44.73	44.91	45.46	45.13	110-120	44.52	2090	93.7,93.7
130	48.78	43.97	49.21	43.49	46.99	42.02	46.34	43.12	120-130	40.82	2130	95.5,95.5
140	50.24	43.26	47.52	43.43	48.25	40.76	46.27	41.98	130-140	34.75	2165	97.1,97.1
150	48.24	45.08	45.24	44.92	47.05	42.84	43.90	44.07	140-150	27.88	2193	98.3,98.3
160	47.59	43.77	44.31	43.89	46.46	42.50	43.17	43.43	150-160	20.60	2214	99.2,99.2
170	49.36	48.74	47.31	48.39	47.75	47.42	44.97	47.62	160-170	12.59	2226	99.8,99.8
180	53.29	50.43	53.85	50.09	53.34	50.46	53.81	50.10	170-180	4.656	2231	100,100
DEG	LUMINOUS INTENSITY:cd									UNIT:lm		

Conical surface Flux(90deg): 997.54 lm

%lum = 44.7%

%lamp = 44.7%

Conical surface Flux(120deg): 1477.9 lm

%lum = 66.2%

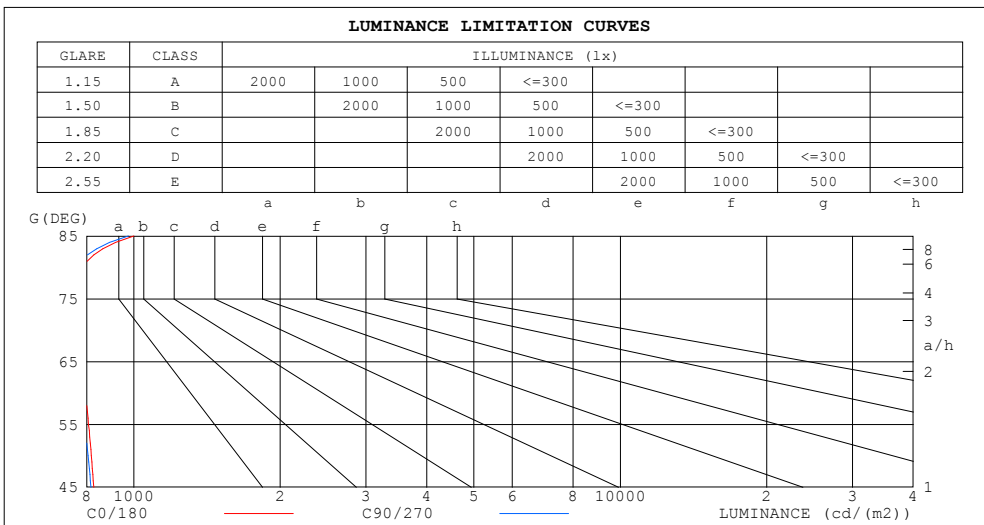
%lamp = 66.2%

C Range: 0 - 360DEG  
 C Interval: 22.5DEG  
 Test Speed: HIGH  
 Temperature:25.3DEG  
 Operators:admin  
 Test Date:2022-03-16

□ Range: 0 - 180DEG  
 □ Interval: 1.0DEG  
 Test System:EVERFINE GO-2000B\_V1 SYSTEM V2.00.411  
 Humidity:65.0%  
 Test Distance:8.780m [K=1.0000]  
 Remarks:

**LUMINANCE LIMITATION CURVES**

Test:U:120.27V I:0.3909A P:42.915W PF:0.9116 Freq:0Hz Lamp Flux:2230.9x1 lm		
NAME: ADS lighting Corp	TYPE:	WEIGHT:
SPEC.:ASD-LFC-WD-20D42-AC-4000K	DIM.:	SERIAL No.:
MFR.: ADS lighting Corp	SUR.:0.49*0.49	Shielding Angle:



LUMINANCE cd/(m2)		
G (DEG)	C0/180	C90/270
85	1000	975
80	784	762
75	754	734
70	767	748
65	782	761
60	795	777
55	807	792
50	818	806
45	828	816

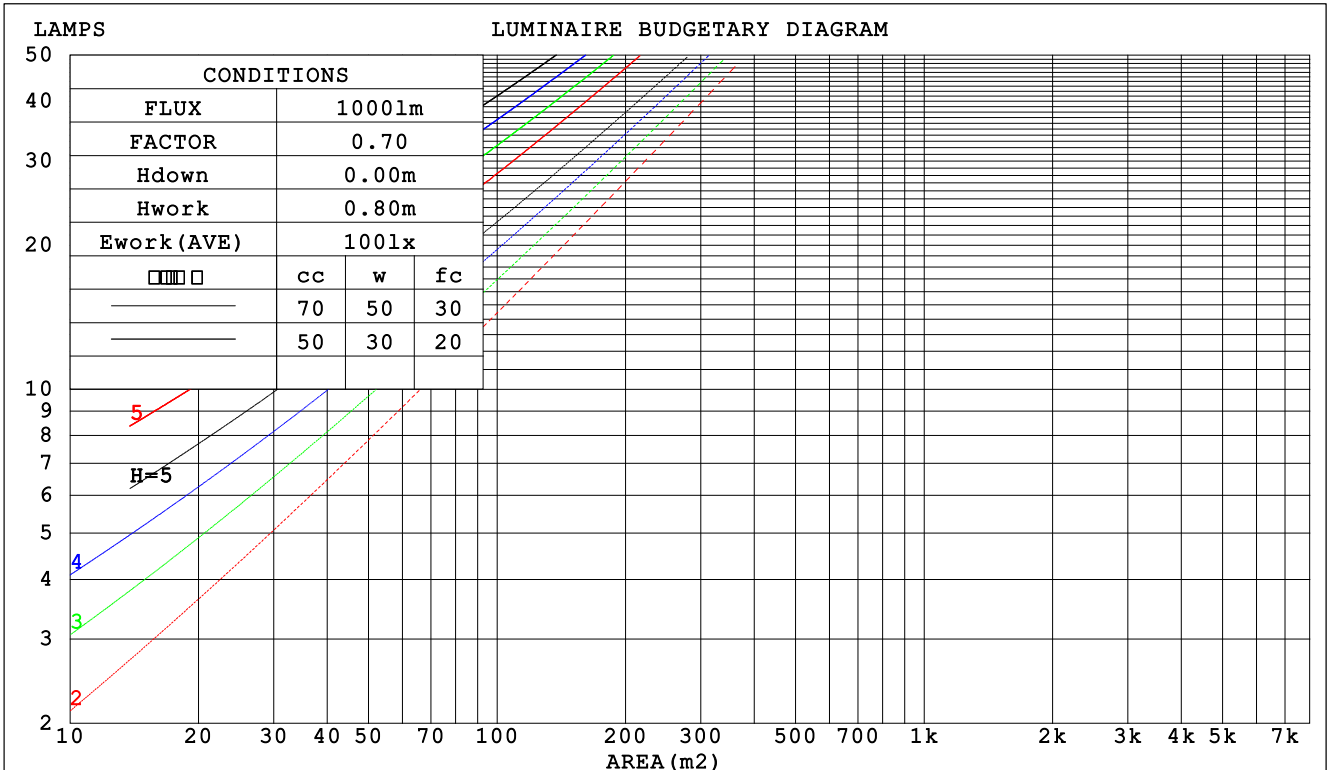
C Range: 0 - 360DEG  
 C Interval: 22.5DEG  
 Test Speed: HIGH  
 Temperature:25.3DEG  
 Operators:admin  
 Test Date:2022-03-16

Range: 0 - 180DEG  
 Interval: 1.0DEG  
 Test System:EVERFINE GO-2000B\_V1 SYSTEM V2.00.411  
 Humidity:65.0%  
 Test Distance:8.780m [K=1.0000]  
 Remarks:

CU AND LUMINAIRE BUDGETARY ESTIMATE DIAGRAM

Test:U:120.27V I:0.3909A P:42.915W PF:0.9116 Freq:0Hz Lamp Flux:2230.9x1 lm		
NAME: ADS lighting Corp	TYPE:	WEIGHT:
SPEC.:ASD-LFC-WD-20D42-AC-4000K	DIM.:	SERIAL No.:
MFR.: ADS lighting Corp	SUR.:0.49*0.49	Shielding Angle:

□cc	80%			70%			50%			30%			10%			0
□w	50%	30%	10%	50%	30%	10%	50%	30%	10%	50%	30%	10%	50%	30%	10%	0
□fc	20%			20%			20%			20%			20%			0
RCR	RCR:Room Cavity Ratio						Coefficients of Utilization(CU)									
0.0	1.16	1.16	1.16	1.12	1.12	1.12	1.04	1.04	1.04	.97	.97	.97	.91	.91	.91	.88
1.0	1.00	.95	.91	.97	.92	.89	.90	.87	.84	.84	.81	.79	.78	.76	.74	.72
2.0	.87	.80	.74	.84	.77	.72	.78	.73	.68	.73	.69	.65	.68	.65	.62	.59
3.0	.76	.68	.61	.73	.66	.60	.69	.62	.57	.64	.59	.54	.60	.56	.52	.49
4.0	.67	.58	.51	.65	.57	.50	.61	.54	.48	.57	.51	.46	.53	.49	.44	.42
5.0	.60	.51	.44	.58	.49	.43	.54	.47	.42	.51	.45	.40	.48	.43	.39	.36
6.0	.54	.45	.38	.52	.44	.38	.49	.42	.36	.46	.40	.35	.43	.38	.34	.31
7.0	.49	.40	.34	.47	.39	.33	.44	.37	.32	.42	.36	.31	.40	.34	.30	.28
8.0	.44	.36	.30	.43	.35	.29	.41	.34	.28	.38	.32	.28	.36	.31	.27	.25
9.0	.40	.32	.27	.39	.32	.26	.37	.30	.26	.35	.29	.25	.34	.28	.24	.22
10.0	.37	.29	.24	.36	.29	.24	.34	.28	.23	.33	.27	.22	.31	.26	.22	.20



C Range: 0 - 360DEG  
 C Interval: 22.5DEG  
 Test Speed: HIGH  
 Temperature:25.3DEG  
 Operators:admin  
 Test Date:2022-03-16

□ Range: 0 - 180DEG  
 □ Interval: 1.0DEG  
 Test System:EVERFINE GO-2000B\_V1 SYSTEM V2.00.411  
 Humidity:65.0%  
 Test Distance:8.780m [K=1.0000]  
 Remarks:

**WEC AND CCEC**

Test:U:120.27V I:0.3909A P:42.915W PF:0.9116 Freq:0Hz Lamp Flux:2230.9x1 lm		
NAME: ADS lighting Corp	TYPE:	WEIGHT:
SPEC.:ASD-LFC-WD-20D42-AC-4000K	DIM.:	SERIAL No.:
MFR.: ADS lighting Corp	SUR.:0.49*0.49	Shielding Angle:

<input type="checkbox"/> cc	80%	70%	50%	30%	10%	0
<input type="checkbox"/> w	50% 30% 10%	50% 30% 10%	50% 30% 10%	50% 30% 10%	50% 30% 10%	0
<input type="checkbox"/> fc	20%	20%	20%	20%	20%	0
RCR	RCR:Room Cavity Ratio		Wall Exitance Coefficients (WEC)			
0.0						
1.0	.327 .186 .059	.316 .180 .057	.295 .169 .054	.277 .160 .051	.259 .150 .048	
2.0	.299 .164 .050	.289 .159 .049	.271 .151 .047	.254 .142 .045	.238 .135 .043	
3.0	.273 .145 .044	.264 .142 .043	.248 .134 .041	.233 .127 .039	.219 .121 .037	
4.0	.250 .130 .038	.242 .127 .037	.228 .121 .036	.214 .115 .035	.201 .109 .033	
5.0	.230 .117 .034	.223 .115 .033	.210 .109 .032	.197 .104 .031	.186 .099 .030	
6.0	.213 .107 .031	.207 .104 .030	.194 .100 .029	.183 .095 .028	.172 .091 .027	
7.0	.198 .098 .028	.192 .096 .027	.181 .091 .026	.170 .087 .025	.161 .083 .025	
8.0	.184 .090 .025	.179 .088 .025	.169 .084 .024	.159 .081 .023	.150 .077 .022	
9.0	.173 .083 .023	.168 .082 .023	.158 .078 .022	.150 .075 .021	.141 .072 .021	
10.0	.162 .078 .022	.158 .076 .021	.149 .073 .021	.141 .070 .020	.133 .067 .019	

<input type="checkbox"/> cc	80%	70%	50%	30%	10%	0
<input type="checkbox"/> w	50% 30% 10%	50% 30% 10%	50% 30% 10%	50% 30% 10%	50% 30% 10%	0
<input type="checkbox"/> fc	20%	20%	20%	20%	20%	0
RCR	RCR:Room Cavity Ratio		Ceiling Cavity Exitance Coefficients (CCEC)			
0.0	.285 .285 .285	.243 .243 .243	.166 .166 .166	.095 .095 .095	.030 .030 .030	
1.0	.276 .251 .228	.236 .215 .196	.162 .148 .136	.093 .086 .079	.030 .028 .026	
2.0	.269 .227 .193	.230 .196 .167	.158 .135 .116	.091 .079 .068	.029 .025 .022	
3.0	.261 .210 .170	.224 .181 .147	.154 .126 .103	.089 .074 .061	.029 .024 .020	
4.0	.254 .197 .155	.218 .171 .134	.150 .119 .095	.087 .070 .056	.028 .023 .018	
5.0	.246 .187 .144	.211 .162 .125	.146 .113 .088	.084 .066 .052	.027 .022 .017	
6.0	.239 .179 .136	.205 .155 .119	.142 .109 .084	.082 .064 .050	.027 .021 .016	
7.0	.232 .173 .131	.200 .150 .114	.138 .105 .081	.080 .062 .048	.026 .020 .016	
8.0	.226 .167 .126	.194 .145 .110	.135 .102 .078	.078 .060 .047	.025 .020 .015	
9.0	.220 .162 .123	.189 .141 .107	.131 .099 .076	.076 .058 .045	.025 .019 .015	
10.0	.214 .158 .120	.185 .137 .105	.128 .096 .075	.075 .057 .045	.024 .019 .015	

C Range: 0 - 360DEG  
 C Interval: 22.5DEG  
 Test Speed: HIGH  
 Temperature:25.3DEG  
 Operators:admin  
 Test Date:2022-03-16

Range: 0 - 180DEG  
 Interval: 1.0DEG  
 Test System:EVERFINE GO-2000B\_V1 SYSTEM V2.00.411  
 Humidity:65.0%  
 Test Distance:8.780m [K=1.0000]  
 Remarks:

**UGR(Unified Glare Rating) Table**

Test:U:120.27V I:0.3909A P:42.915W PF:0.9116 Freq:0Hz Lamp Flux:2230.9x1 lm										
NAME: ADS lighting Corp					TYPE:			WEIGHT:		
SPEC.:ASD-LFC-WD-20D42-AC-4000K					DIM.:			SERIAL No.:		
MFR.: ADS lighting Corp					SUR.:0.49*0.49			Shielding Angle:		
ceiling/cavity	0.7	0.7	0.5	0.5	0.3	0.7	0.7	0.5	0.5	0.3
walls	0.5	0.3	0.5	0.3	0.3	0.5	0.3	0.5	0.3	0.3
working plane	0.2	0.2	0.2	0.2	0.2	0.2	0.2	0.2	0.2	0.2
Room dimensions	Viewed crosswise					Viewed endwise				
x = 2H y = 2H	11.4	12.7	11.8	13.1	13.6	11.3	12.6	11.7	13.1	13.5
3H	13.0	14.3	13.5	14.7	15.2	12.9	14.2	13.4	14.6	15.1
4H	13.7	14.9	14.2	15.4	15.9	13.6	14.8	14.1	15.3	15.8
6H	14.3	15.4	14.8	15.9	16.5	14.2	15.3	14.7	15.8	16.3
8H	14.6	15.7	15.1	16.2	16.7	14.5	15.6	15.0	16.0	16.6
12H	14.9	15.9	15.4	16.4	17.0	14.7	15.8	15.3	16.3	16.8
4H 2H	11.9	13.1	12.4	13.6	14.1	11.9	13.1	12.4	13.5	14.0
3H	13.8	14.8	14.3	15.3	15.9	13.7	14.7	14.2	15.2	15.8
4H	14.6	15.6	15.2	16.1	16.7	14.5	15.5	15.1	16.0	16.6
6H	15.4	16.2	16.0	16.8	17.4	15.3	16.1	15.9	16.7	17.3
8H	15.7	16.5	16.3	17.1	17.7	15.6	16.4	16.2	17.0	17.6
12H	16.1	16.8	16.7	17.4	18.1	16.0	16.7	16.6	17.3	17.9
8H 4H	14.9	15.7	15.5	16.3	16.9	14.8	15.6	15.4	16.2	16.8
6H	15.9	16.5	16.5	17.1	17.8	15.8	16.4	16.4	17.0	17.7
8H	16.4	16.9	17.0	17.6	18.3	16.3	16.8	16.9	17.5	18.2
12H	16.9	17.4	17.5	18.0	18.7	16.8	17.3	17.4	17.9	18.6
12H 4H	14.9	15.6	15.5	16.2	16.9	14.8	15.6	15.5	16.2	16.8
6H	16.0	16.5	16.6	17.2	17.9	15.9	16.5	16.5	17.1	17.8
8H	16.5	17.0	17.2	17.7	18.4	16.4	16.9	17.1	17.6	18.3
Variations with the observer position at spacings:										
S = 1.0H	+ 0.1 / - 0.2					+ 0.1 / - 0.2				
1.5H	+ 0.2 / - 0.3					+ 0.2 / - 0.3				
2.0H	+ 0.1 / - 0.3					+ 0.1 / - 0.3				

CIE Pub.117, 2231 lm Total Lamp Luminous Flux Corrected (8log(F/F0) = 2.8)  
 Area: 0.7539 m2

C Range: 0 - 360DEG  
 C Interval: 22.5DEG  
 Test Speed: HIGH  
 Temperature:25.3DEG  
 Operators:admin  
 Test Date:2022-03-16

Range: 0 - 180DEG  
 Interval: 1.0DEG  
 Test System:EVERFINE GO-2000B\_V1 SYSTEM V2.00.411  
 Humidity:65.0%  
 Test Distance:8.780m [K=1.0000]  
 Remarks:

**UTILIZATION FACTORS TABLE**

Test:U:120.27V I:0.3909A P:42.915W PF:0.9116 Freq:0Hz Lamp Flux:2230.9x1 lm		
NAME: ADS lighting Corp	TYPE:	WEIGHT:
SPEC.:ASD-LFC-WD-20D42-AC-4000K	DIM.:	SERIAL No.:
MFR.: ADS lighting Corp	SUR.:0.49*0.49	Shielding Angle:

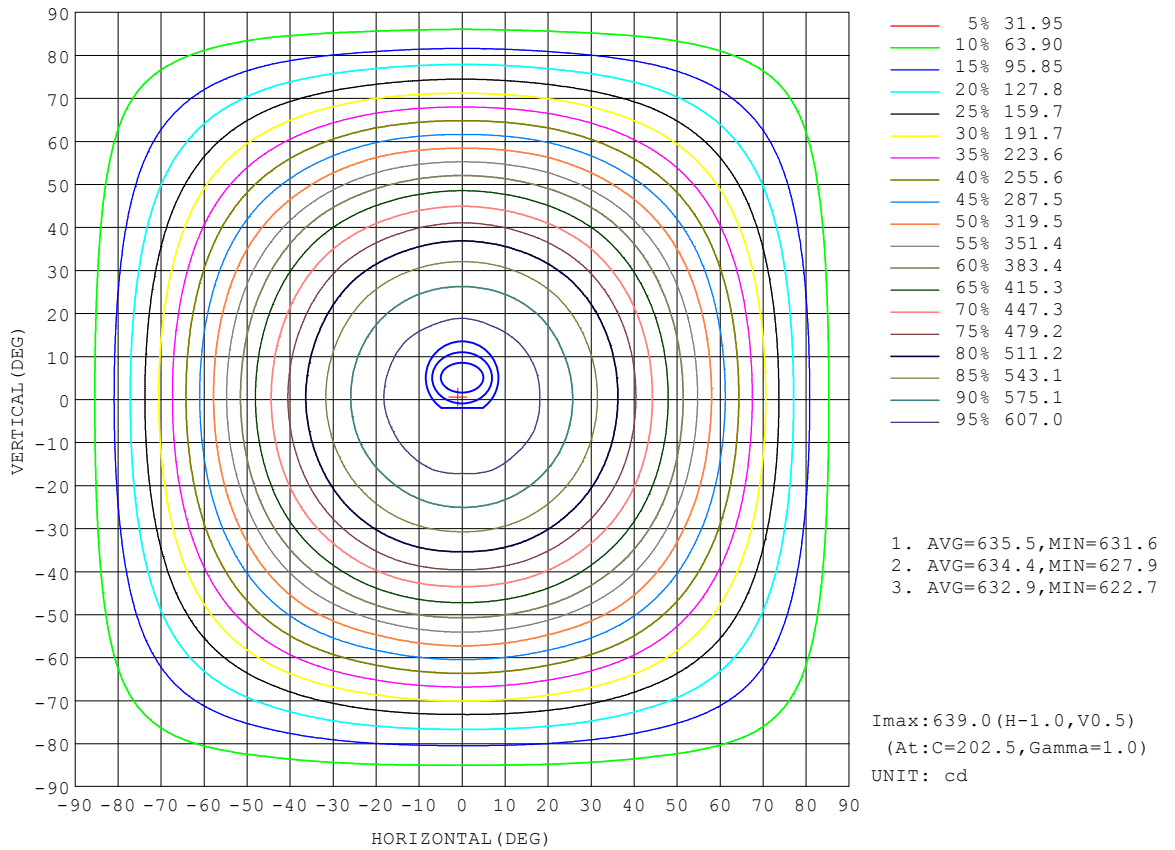
REFLECTANCE										
Ceiling	0.8	0.8	0.8	0.7	0.7	0.7	0.5	0.5	0.5	0
Walls	0.7	0.5	0.3	0.7	0.5	0.3	0.7	0.5	0.3	0
Working plane	0.2	0.2	0.2	0.2	0.2	0.2	0.2	0.2	0.2	0
ROOM INDEX	UTILIZATION FACTORS (PERCENT) $k(RI) \times RCR = 5$									
k = 0.60	53	41	34	52	41	34	50	40	33	27
0.80	63	50	43	61	50	43	58	48	42	34
1.00	71	59	51	69	58	51	66	58	50	41
1.25	78	66	59	76	65	58	72	63	57	48
1.50	83	72	65	80	71	64	76	68	62	52
2.00	90	80	73	87	78	72	82	75	69	59
2.50	94	85	79	91	83	77	85	79	74	63
3.00	97	90	84	94	87	82	88	83	78	66
4.00	102	95	90	98	92	88	92	87	83	71
5.00	104	99	94	101	96	92	94	90	87	74
ROOM INDEX	UF(total)									Direct
According to DIN EN 13032-2 2004			Suspended				SHRNOM = 1.25			

C Range: 0 - 360DEG  
 C Interval: 22.5DEG  
 Test Speed: HIGH  
 Temperature:25.3DEG  
 Operators:admin  
 Test Date:2022-03-16

Range: 0 - 180DEG  
 Interval: 1.0DEG  
 Test System:EVERFINE GO-2000B\_V1 SYSTEM V2.00.411  
 Humidity:65.0%  
 Test Distance:8.780m [K=1.0000]  
 Remarks:

**ISOCANDELA DIAGRAM**

Test:U:120.27V I:0.3909A P:42.915W PF:0.9116 Freq:0Hz Lamp Flux:2230.9x1 lm		
NAME: ADS lighting Corp	TYPE:	WEIGHT:
SPEC.:ASD-LFC-WD-20D42-AC-4000K	DIM.:	SERIAL No.:
MFR.: ADS lighting Corp	SUR.:0.49*0.49	Shielding Angle:



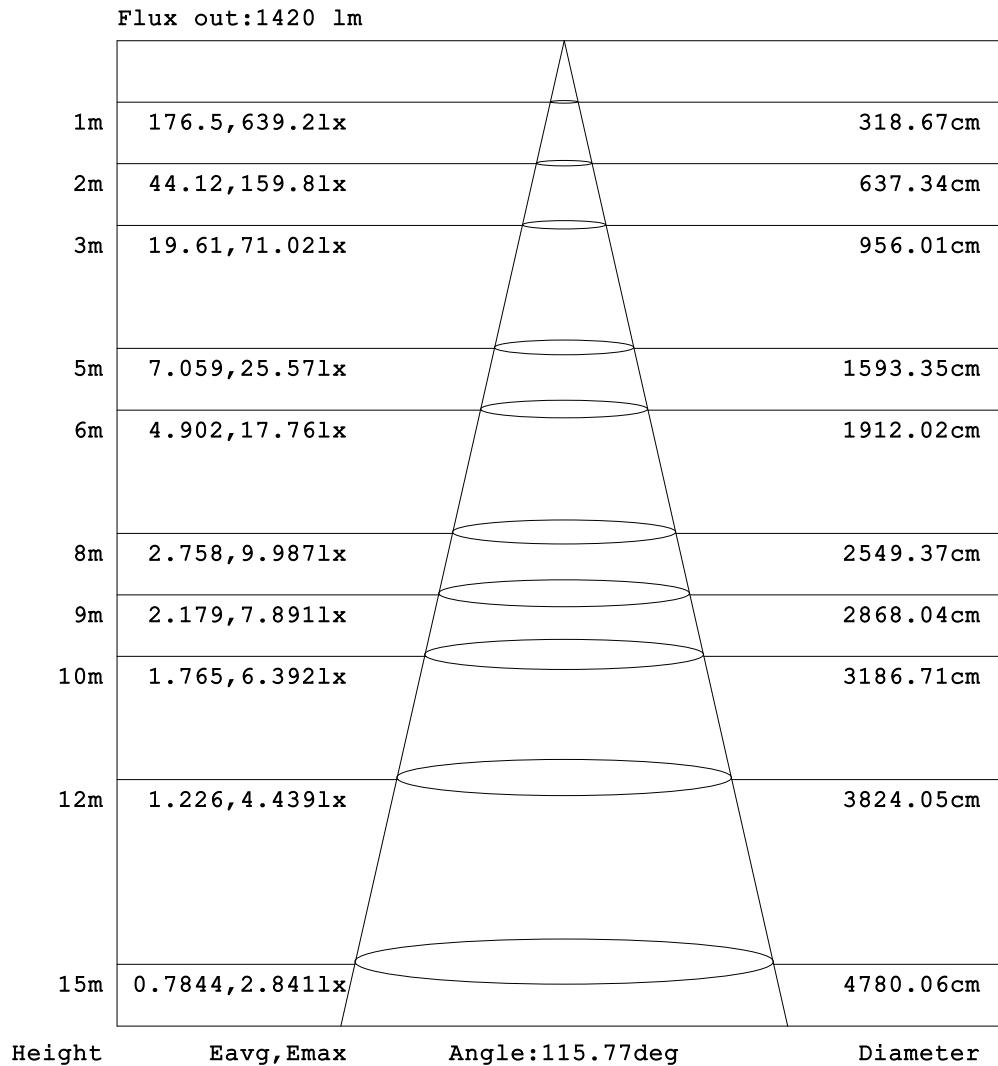
C Range: 0 - 360DEG  
 C Interval: 22.5DEG  
 Test Speed: HIGH  
 Temperature:25.3DEG  
 Operators:admin  
 Test Date:2022-03-16

Range: 0 - 180DEG  
 Interval: 1.0DEG  
 Test System:EVERFINE GO-2000B\_V1 SYSTEM V2.00.411  
 Humidity:65.0%  
 Test Distance:8.780m [K=1.0000]  
 Remarks:



**AAI Figure**

Test:U:120.27V I:0.3909A P:42.915W PF:0.9116 Freq:0Hz Lamp Flux:2230.9x1 lm		
NAME: ADS lighting Corp	TYPE:	WEIGHT:
SPEC.:ASD-LFC-WD-20D42-AC-4000K	DIM.:	SERIAL No.:
MFR.: ADS lighting Corp	SUR.:0.49*0.49	Shielding Angle:



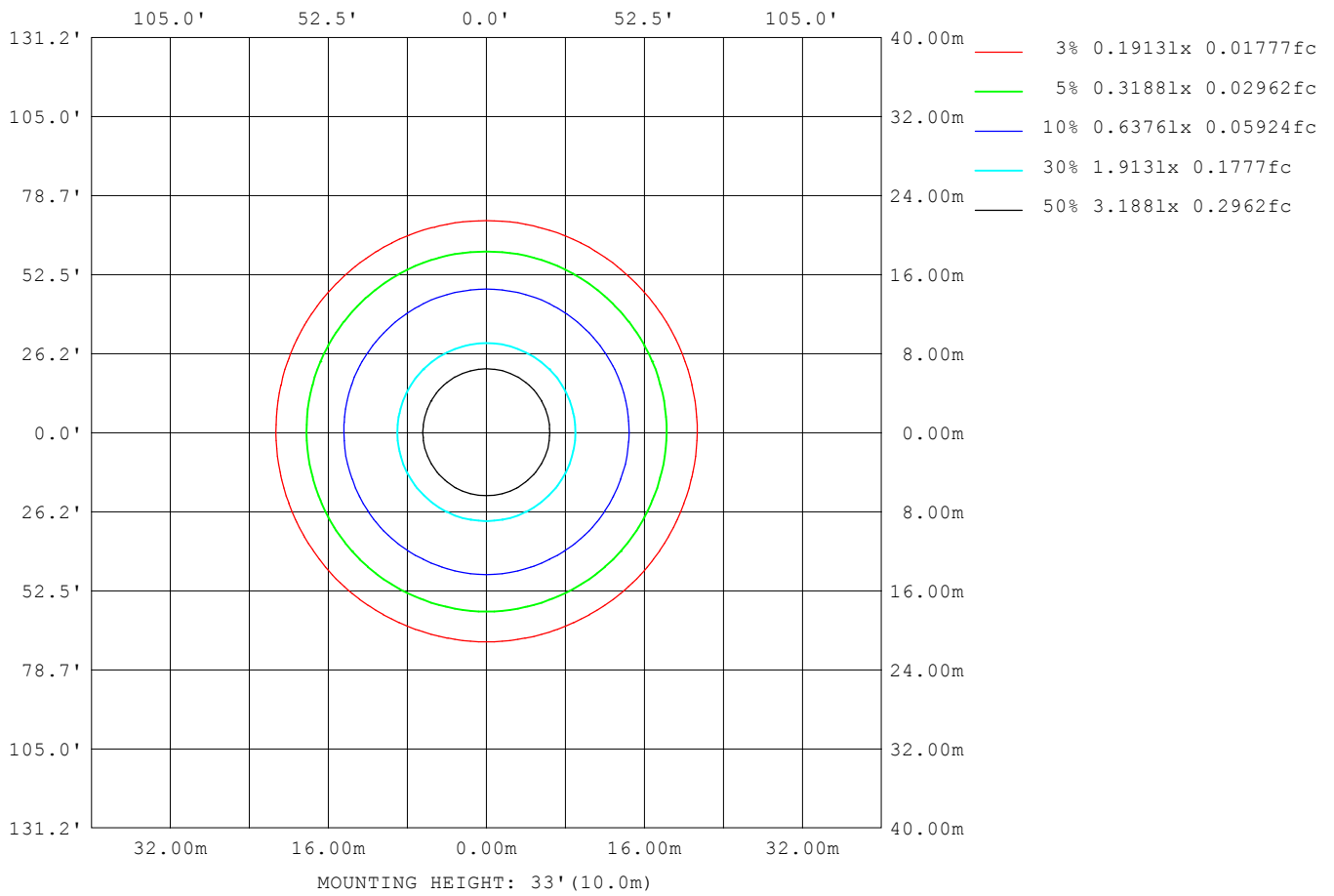
Note:The Curves indicate the illuminated area and the average illumination when the luminaire is at different distance.

C Range: 0 - 360DEG  
 C Interval: 22.5DEG  
 Test Speed: HIGH  
 Temperature:25.3DEG  
 Operators:admin  
 Test Date:2022-03-16

Range: 0 - 180DEG  
 Interval: 1.0DEG  
 Test System:EVERFINE GO-2000B\_V1 SYSTEM V2.00.411  
 Humidity:65.0%  
 Test Distance:8.780m [K=1.0000]  
 Remarks:

**ISOLUX DIAGRAM**

Test:U:120.27V I:0.3909A P:42.915W PF:0.9116 Freq:0Hz Lamp Flux:2230.9x1 lm		
NAME: ADS lighting Corp	TYPE:	WEIGHT:
SPEC.:ASD-LFC-WD-20D42-AC-4000K	DIM.:	SERIAL No.:
MFR.: ADS lighting Corp	SUR.:0.49*0.49	Shielding Angle:



C Range: 0 - 360DEG  
 C Interval: 22.5DEG  
 Test Speed: HIGH  
 Temperature:25.3DEG  
 Operators:admin  
 Test Date:2022-03-16

Range: 0 - 180DEG  
 Interval: 1.0DEG  
 Test System:EVERFINE GO-2000B\_V1 SYSTEM V2.00.411  
 Humidity:65.0%  
 Test Distance:8.780m [K=1.0000]  
 Remarks:

### LED Avg.L Report

Test:U:120.27V I:0.3909A P:42.915W PF:0.9116 Freq:0Hz Lamp Flux:2230.9x1 lm		
NAME: ADS lighting Corp	TYPE:	WEIGHT:
SPEC.:ASD-LFC-WD-20D42-AC-4000K	DIM.:	SERIAL No.:
MFR.: ADS lighting Corp	SUR.:0.49*0.49	Shielding Angle:

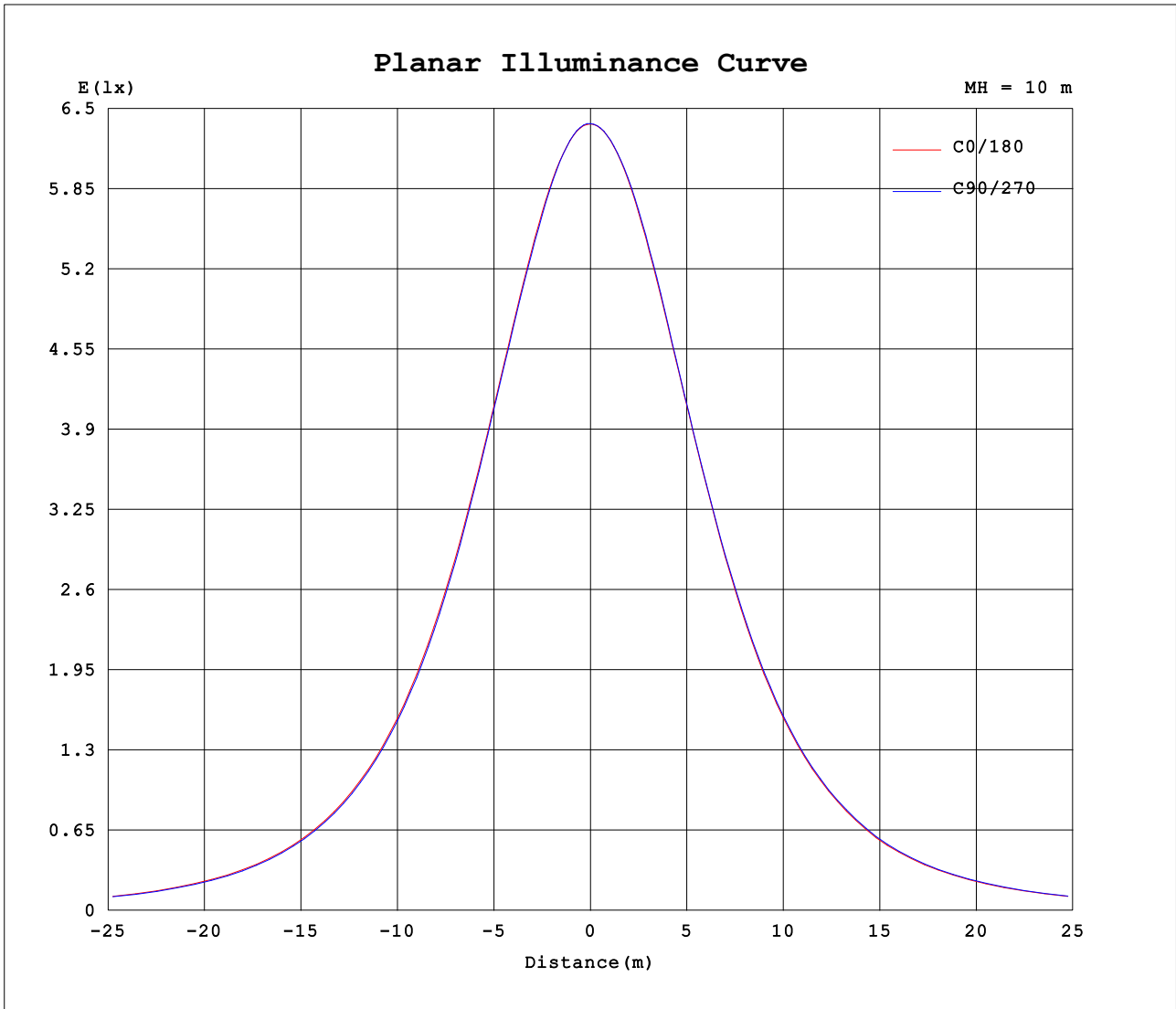
AvgL	cd/m2
L_0~180 (65) av	780
L_0~180 (75) av	756
L_0~180 (85) av	1006
L_90~270 (65) av	778
L_90~270 (75) av	763
L_90~270 (85) av	1023
L_45 (65) av	778
L_45 (75) av	759
L_45 (85) av	1014

Standard: GB/T 29293-2012

C Range: 0 - 360DEG  
 C Interval: 22.5DEG  
 Test Speed: HIGH  
 Temperature:25.3DEG  
 Operators:admin  
 Test Date:2022-03-16

Range: 0 - 180DEG  
 Interval: 1.0DEG  
 Test System:EVERFINE GO-2000B\_V1 SYSTEM V2.00.411  
 Humidity:65.0%  
 Test Distance:8.780m [K=1.0000]  
 Remarks:

Planar Illuminance Curve



C Range: 0 - 360DEG  
 C Interval: 22.5DEG  
 Test Speed: HIGH  
 Temperature:25.3DEG  
 Operators:admin  
 Test Date:2022-03-16

Range: 0 - 180DEG  
 Interval: 1.0DEG  
 Test System:EVERFINE GO-2000B\_V1 SYSTEM V2.00.411  
 Humidity:65.0%  
 Test Distance:8.780m [K=1.0000]  
 Remarks:

LUMINOUS DISTRIBUTION INTENSITY DATA

Test:U:120.27V I:0.3909A P:42.915W PF:0.9116 Freq:0Hz Lamp Flux:2230.9x1 lm		
NAME: ADS lighting Corp	TYPE:	WEIGHT:
SPEC.:ASD-LFC-WD-20D42-AC-4000K	DIM.:	SERIAL No.:
MFR.: ADS lighting Corp	SUR.:0.49*0.49	Shielding Angle:

Table--1

UNIT: cd

C (DEG) □ (DEG)	0	22.5	45	67.5	90	112.5	135	157.5	180	202.5	225	247.5	270	292.5	315	337.5			
0	638	639	638	638	638	638	638	638	638	639	638	638	638	638	638	638			
5	635	636	636	636	636	635	635	636	635	637	637	637	635	637	636	635			
10	629	628	628	628	628	628	628	628	629	629	630	630	629	630	630	628			
15	617	617	616	616	614	616	615	615	617	617	619	618	619	618	618	617			
20	600	601	599	599	597	599	598	599	601	601	602	602	603	601	602	601			
25	579	578	577	576	576	576	576	578	580	581	581	581	581	581	581	579			
30	552	551	550	549	548	549	549	551	553	554	555	555	555	555	555	552			
35	520	518	516	516	514	516	517	518	521	521	524	523	524	523	524	521			
40	483	481	478	478	476	478	479	481	483	484	486	485	487	486	487	485			
45	441	440	436	436	435	436	437	440	442	443	445	445	446	445	446	443			
50	397	395	392	392	390	391	392	395	398	399	401	401	402	401	401	398			
55	349	343	344	340	343	340	344	343	349	351	352	354	354	354	352	350			
60	300	295	295	292	293	291	295	295	298	301	301	305	303	305	301	302			
65	249	245	245	242	242	242	244	245	248	251	252	254	253	254	251	251			
70	198	195	195	193	193	192	194	195	197	200	202	203	203	203	201	199			
75	147	147	144	145	143	144	144	146	148	149	152	152	154	152	152	148			
80	103	102	100	101	99.7	101	100	102	103	104	107	107	109	107	107	103			
85	65.7	65.5	64.2	64.8	64.0	64.9	64.6	66.2	66.4	66.7	69.0	69.2	70.4	69.0	68.7	66.3			
90	42.2	42.4	42.2	42.8	42.7	42.9	42.5	43.0	42.4	42.3	43.3	43.5	44.3	43.5	43.0	41.8			
95	39.1	39.8	40.7	41.5	41.9	41.4	40.8	40.1	38.9	38.7	38.7	39.2	39.2	38.8	38.1	38.0			
100	41.8	42.0	42.6	43.4	43.8	43.3	42.6	42.2	41.4	40.8	40.8	40.8	41.2	40.7	39.9	40.2			
105	44.1	43.9	44.2	45.0	45.0	44.8	44.0	44.1	43.5	42.5	41.9	41.8	42.3	41.9	41.1	42.2			
110	46.3	44.9	45.5	46.3	46.0	46.1	45.1	44.8	45.4	43.4	43.2	43.2	42.9	42.9	42.6	43.5			
115	45.4	43.4	46.7	47.2	47.6	47.3	45.6	43.2	43.8	41.7	44.4	44.5	44.5	44.0	44.1	42.4			
120	46.2	43.4	47.1	47.7	48.4	47.9	46.9	43.4	44.7	41.4	44.9	45.2	45.5	44.7	45.1	41.7			
125	47.6	44.4	46.5	47.9	49.1	47.5	46.4	44.1	45.9	42.0	44.6	45.3	46.0	45.1	45.4	42.2			
130	48.8	45.4	44.0	47.5	49.2	46.6	43.5	45.0	47.0	42.8	42.0	45.1	46.3	44.9	43.1	43.1			
135	49.9	45.8	43.0	45.8	48.9	44.9	42.9	45.2	48.1	43.0	40.6	44.4	46.5	44.5	41.7	43.3			
140	50.2	45.3	43.3	43.1	47.5	43.8	43.4	45.0	48.2	42.8	40.8	41.7	46.3	42.7	42.0	43.2			
145	49.6	45.8	44.0	43.6	46.8	43.2	43.5	45.3	48.0	43.3	41.7	40.3	44.9	41.6	42.9	44.3			
150	48.2	46.3	45.1	44.1	45.2	43.9	44.9	45.7	47.1	43.8	42.8	42.0	43.9	42.4	44.1	45.5			
155	47.5	45.9	44.5	44.0	44.9	44.3	44.5	45.2	46.6	43.8	43.1	43.0	43.3	42.6	43.8	44.7			
160	47.6	46.4	43.8	43.2	44.3	44.6	43.9	44.1	46.5	42.9	42.5	43.9	43.2	42.2	43.4	45.2			
165	47.1	45.9	43.6	42.3	44.1	44.4	43.5	43.9	45.9	42.4	42.2	43.5	43.5	41.7	43.5	45.4			
170	49.4	49.5	48.7	45.0	47.3	48.5	48.4	46.2	47.7	45.6	47.4	47.1	45.0	44.1	47.6	48.7			
175	51.8	51.3	48.4	48.5	51.9	51.6	48.1	48.4	50.8	47.8	47.8	50.8	49.7	46.6	47.7	51.1			
180	53.3	50.4	50.4	51.5	53.8	50.7	50.1	50.9	53.3	50.4	50.5	51.5	53.8	50.7	50.1	51.0			

C Range: 0 - 360DEG  
 C Interval: 22.5DEG  
 Test Speed: HIGH  
 Temperature:25.3DEG  
 Operators:admin  
 Test Date:2022-03-16

□ Range: 0 - 180DEG  
 □ Interval: 1.0DEG  
 Test System:EVERFINE GO-2000B\_V1 SYSTEM V2.00.411  
 Humidity:65.0%  
 Test Distance:8.780m [K=1.0000]  
 Remarks: