



# LED ROUND SURFACE MINI PANEL WITH MOTION SENSOR

► **DESIGN & OPTIONS** - LED ROUND SURFACE MINI PANEL WITH MOTION SENSOR has a classic, low-profile design that gives it a sleek look with efficient lighting. The built-in Motion Sensor will dim down or turn off the fixture automatically when no motion is detected. It also includes a color adjustable option, allowing you to choose either 3000K, 4000K or 5000K with a simple switch. The 120° beam angle grants you smooth and even lighting. It comes in a 9" size with a WHITE finish.

► **INSTALLATION** - Installation is quick and easy: just attach the bracket to the outlet box with screws, connect the wires, and fix the lamp on the bracket. Screws, wire nuts and all installation accessories are provided. The fixture can be installed on either an existing outlet box or a remodeled can by using a retrofit kit with universal TP24 or E26 connectors (sold separately). Refer to install instructions for detailed steps.

► **APPLICATION** - The LED ROUND SURFACE MINI PANEL WITH MOTION SENSOR provides bright, yet smooth lighting for your family room, bedroom, hallway, corridor, or any other common area in your living space. It is also suitable for Damp locations, making it perfect for kitchens and garages as well. It can also be used as additional lighting to an already existing ceiling light.

► **ENERGY SAVINGS & EFFICIENCY** - Replacing an incandescent fixture with LED ROUND SURFACE MINI PANEL WITH MOTION SENSOR can save you 8 times as much on your current energy costs. With a lifespan of 50,000 hours, these fixtures are made to last decades with normal operation! This fixture will save you a significant amount of money in its lifetime.

► **CERTIFICATION & WARRANTY** - Buy with confidence: ASD provides a 5-year warranty along with ETL and ENERGY STAR certifications to guarantee top quality products and safety!

Top US certifications allow participation in rebates; please check the rebate programs available in your state.

Catalog number	
Notes	
Type	



## PRODUCT LEGEND:

Family	Size	Dimmable	Watts	CCT	Option	Finish
ASD-MPR	X	X	XX	XX	MS	XX
LED Round Surface Mini Panel	9 = 9 inch	N = Non-Dimmable	18 = 18 W	CC = 3,000/4,000/5,000 K	MS = Motion Sensor	WH = White

## LED ROUND SURFACE MINI PANEL WITH MOTION SENSOR:

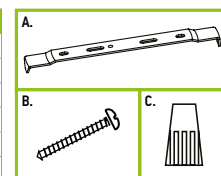
Model	Size	Watts	Voltage	Dimmable	Lumens	CCT	Dimensions (LxH)
ASD-MPR-9N18CC-MS-WH	9 inch	18 W	120 V	No	1,300 lm	3,000/4,000/5,000 K	8 3/4" x 3/4"

## PRODUCT SPECIFICATIONS:

Construction & Materials		Electrical System	
Housing	Plastic	Input Voltage	120 V
Lens	Acrylic	Max input current	0.17 A
Finish Color	White	Inrush current (Action time)	0.15 A (0.05 S)
Weight	1 lb (0.5 kg)	AC input range	min 108 V max 132 V
<b>Environmental System</b>		Off State Power	0 W
Work Environment	Suitable for Damp Locations	Power Consumption	18 W
Operating Temperature	-4°F to 104°F (-20°C to 40°C)	Power Factor	≥ 0.9
L-70 Life	> 50,000 hrs		
<b>Optical System</b>			
Luminous Flux	1,300 lm		
Color Temperature	3,000/4,000/5,000 K		
CRI	> 80		
<b>Regular and Voluntary Certifications</b>			
5-year limited warranty			
cETLus certified			
Energy Star listed			

## PACKAGE CONTENTS:

Description	Q-ty
LED Round Surface Mini Panel with Motion Sensor	1
Bracket (A)	1
Screw (B)	4
Wire nut (C)	3
Box	1
Cut Sheet	2



For most up-to-date spec sheets please refer to [asd-lighting.com](http://asd-lighting.com)



# LED ROUND SURFACE MINI PANEL WITH MOTION SENSOR

## INSTALLATION GUIDE

### IMPORTANT SAFETY INFORMATION:

Please read all the instructions below before installation.

- ▶ Make sure that the supply voltage corresponds to the rated product voltage.
- ▶ The product must be installed by a qualified electrician in accordance with the National Electrical Code and corresponding local codes.
- ▶ If the product is damaged, do not use it.

### ⚠ WARNING

**RISK OF PERSONAL INJURY – READ and follow all WARNINGS and installation instructions.**

Keep or give to the owner for future reference.

**Risk of cuts:** Wear gloves to prevent cuts or abrasions when removing from carton, handling, installing, and maintaining this product.

**Risk of electric shock:** This product must be installed in accordance with the applicable installation code by a person familiar with the construction and operation of the product and the hazards involved.

**Risk of Fire:** Minimum 194°F supply conductors. Consult a qualified electrician to ensure correct branch circuit conductor.

ASD® assumes no responsibility for claims arising out of improper or careless installation or handling of this product.

### MOTION SENSOR SETTINGS:

Sensor has two selectable modes:

#### • Day mode

The light is ON only when motion detected.

The light sensing option is OFF.

Detection range: 13.1-19.6ft / Time: 45 sec.

#### • Night Mode

The light is ON when illumination is <70 lux and motion detected.

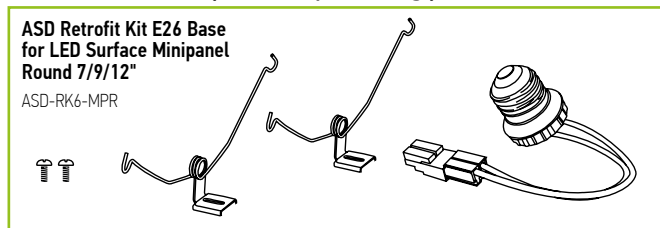
Detection range: 13.1-19.6ft / Time: 45 sec.

If illumination is >200 lux the light is always OFF.

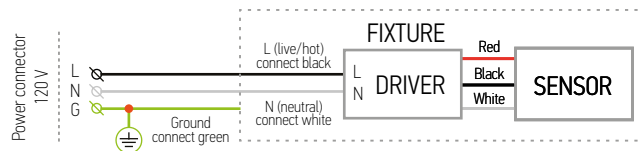


⚠ RF interference may affect the operation of this sensor

### ACCESSORIES (sold separately):

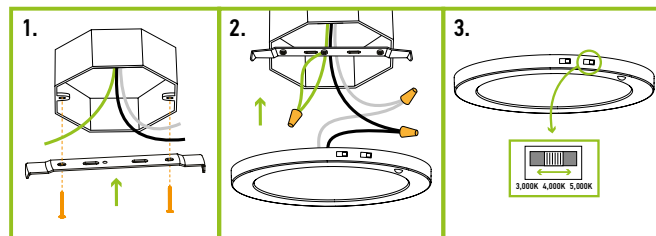


### ELECTRICAL SCHEMATIC DIAGRAM:



### INSTALLATION STEPS:

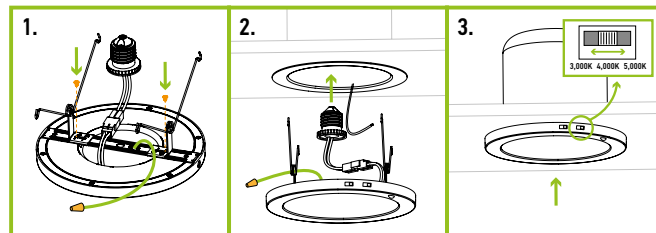
1. Attach the bracket to the existing outlet box in the ceiling using two screws.
2. Connect the wires: Black to Black, White to White, Ground to Ground. Secure the connection with the wire nuts. Insert the fixture to the bracket until it clicks.
3. Choose needed color temperature and motion sensor setting by adjusting switch position on the side of the fixture.



### RETROFIT KIT INSTALLATION

**ASD-RK6-MPR** sold separately:

1. Fix the bracket to the fixture until it clicks. Attach spring-loaded clips to the bracket using short screws. Join the TP24 connector to the fixture wires and connect it to the E26 socket adapter.
2. Screw the E26 socket adapter into the socket in the housing.
3. Press the fixture in to the housing. Choose needed color temperature and motion sensor setting by adjusting switch position on the side of the fixture. Turn on the power at the circuit breaker.



## ORDERING INFORMATION

### LED ROUND SURFACE MINI PANEL WITH MOTION SENSOR:

Model	UPC	Pcs. in middle box	Middle box Size	Middle box Weight	GTIN 14 in Middle box	Pcs. per Carton	Carton Size	Carton Weight	GTIN 14 in Carton
ASD-MPR-9N18CC-MS-WH	810050734493	4	9.4" x 6.9" x 10"	5.5 lb	10810050734490	12	21.5" x 10" x 10.6"	17.6 lb	20810050734497

### ACCESSORIES:

Model	Name	Weight	Dimensions	UPC				
ASD-RK6-MPR	ASD Retrofit Kit with E26 base and TP24 connector for LED Round Surface Mini Panel 7/9/12"	0.1 lb	6 3/4" x 15/16" x 3 1/8"	810050731096				
Model	Pcs in Middle box	Middle box Size	Middle box Weight	GTIN 14 for Middle box	Pcs. per Carton	Carton Size	Carton Weight	GTIN 14 for Carton
ASD-RK6-MPR	12	7.1" x 5.1" x 5.7"	1.4 lb	10810050731093	48	11" x 7.7" x 12.4"	6.3 lb	20810050731090

For most up-to-date spec sheets please refer to [asd-lighting.com](http://asd-lighting.com)

ASD LIGHTING CORP

E-mail: [orders@asd-lighting.com](mailto:orders@asd-lighting.com) | Web site: [www.asd-lighting.com](http://www.asd-lighting.com)

