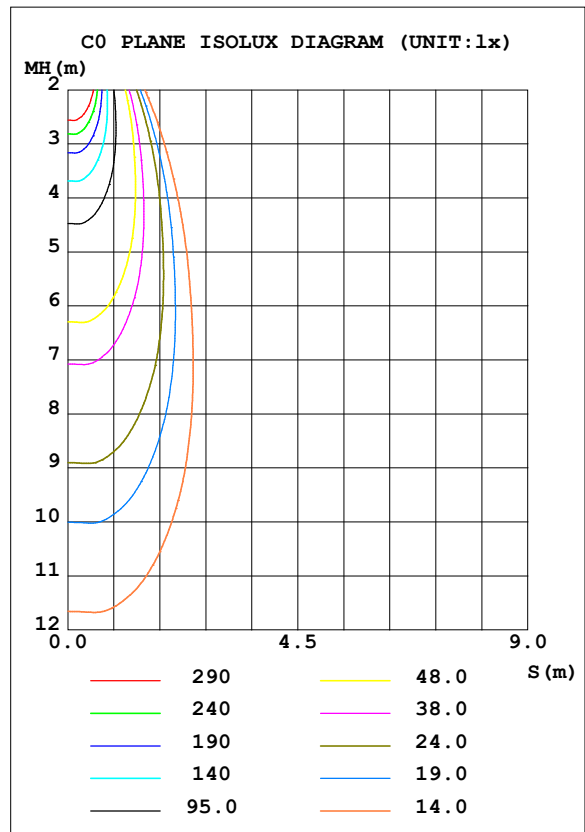
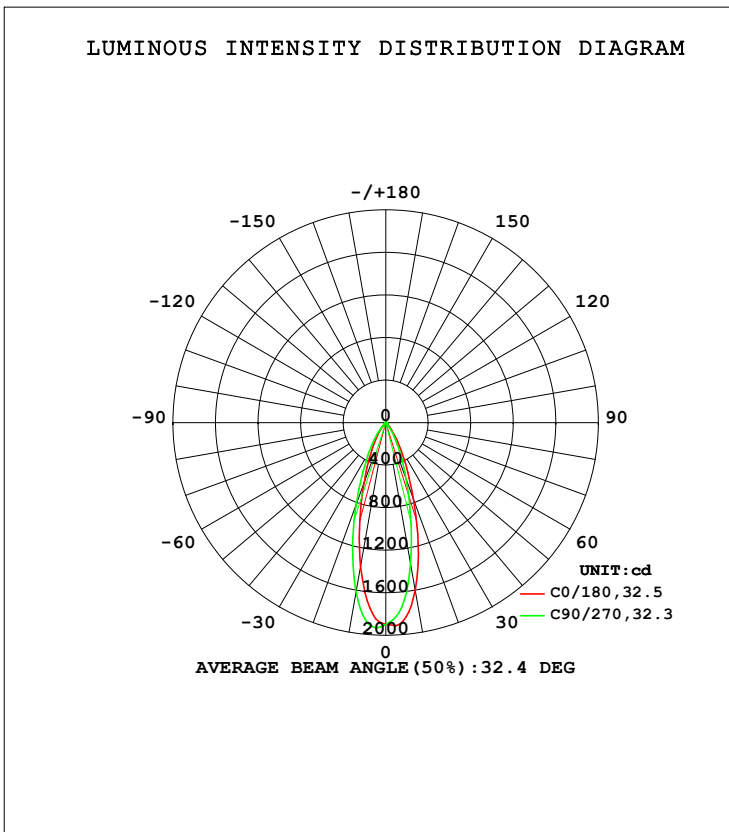


**LUMINAIRE PHOTOMETRIC TEST REPORT**

Test:U:120.05V I:0.1240A P:11.460W PF:0.9257 Freq:59.98Hz Lamp Flux:765.554x1 lm		
NAME: ASD-CD-TR-3D12AC-WH	TYPE:	WEIGHT:
SPEC.:3000K 90	DIM.:	SERIAL No.:
MFR.: ASD Lighting Corp	SUR.:	Shielding Angle:

DATA OF LAMP		PHOTOMETRIC DATA Eff: 66.81 lm/W			
MODEL		I <sub>max</sub> (cd)	1934	S/MH (C0/180)	0.50
NOMINAL POWER (W)	12	LOR (%)	100.0	S/MH (C90/270)	0.60
RATED VOLTAGE (V)	120	TOTAL FLUX (lm)	765.55	<input type="checkbox"/> UP, DN (C0-180)	0.0, 45.6
NOMINAL FLUX (lm)	765.554	CIE CLASS	DIRECT	<input type="checkbox"/> UP, DN (C180-360)	0.0, 54.4
LAMPS INSIDE	1	<input type="checkbox"/> up (%)	0.0	CIBSE SHR NOM	0.50
TEST VOLTAGE (V)	12	<input type="checkbox"/> down (%)	100.0	CIBSE SHR MAX	0.55



C Range: 0 - 360DEG  
 C Interval: 22.5DEG  
 Test Speed: HIGH  
 Temperature: 25.3DEG  
 Operators:  
 Test Date: 2021-08-24

Range: 0 - 90DEG  
 Interval: 1.0DEG  
 Test System: EVERFINE GO-SPEX500\_V1 SYSTEM V2.00.421  
 Humidity: 65.0%  
 Test Distance: 3.080m [K=1.0000]  
 Remarks:

**ZONAL FLUX DIAGRAM**

ZONAL FLUX DIAGRAM:

mm	C0	C45	C90	C135	C180	C225	C270	C315	mm	□ zone	□ total	%lum,lamp
10	1599	1473	1347	1291	1369	1502	1615	1670	0- 10	162.2	162.2	21.2,21.2
20	761.4	640.7	558.3	535.2	597.8	698.6	814.6	847.2	10- 20	290.3	452.5	59.1,59.1
30	268.9	218.5	184.7	180.6	213.9	265.8	308.5	314.1	20- 30	193.9	646.5	84.4,84.4
40	66.30	48.98	32.28	34.03	46.41	60.09	83.74	82.00	30- 40	83.81	730.3	95.4,95.4
50	13.75	11.87	11.24	11.40	11.67	12.98	14.20	15.24	40- 50	20.14	750.4	98,98
60	8.190	7.526	6.845	6.953	7.188	8.103	7.388	8.157	50- 60	8.899	759.3	99.2,99.2
70	3.492	2.791	2.109	2.331	2.778	2.874	2.598	3.191	60- 70	4.750	764.1	99.8,99.8
80	0.6357	0.4843	0.4003	0.4087	0.5094	0.4140	0.3790	0.4726	70- 80	1.306	765.4	100,100
90	0.0120	0.0067	0.0147	0.0030	0.0093	0.0080	0.0094	0.0033	80- 90	0.1635	765.6	100,100
100									90-100			
110									100-110			
120									110-120			
130									120-130			
140									130-140			
150									140-150			
160									150-160			
170									160-170			
180									170-180			
DEG	LUMINOUS INTENSITY:cd									UNIT:lm		

C Range: 0 - 360DEG  
 C Interval: 22.5DEG  
 Test Speed: HIGH  
 Temperature:25.3DEG  
 Operators:  
 Test Date:2021-08-24

□ Range: 0 - 90DEG  
 □ Interval: 1.0DEG  
 Test System:EVERFINE GO-SPEX500\_V1 SYSTEM V2.00.421  
 Humidity:65.0%  
 Test Distance:3.080m [K=1.0000]  
 Remarks:

**LUMINANCE LIMITATION CURVES**

Test:U:120.05V I:0.1240A P:11.460W PF:0.9257 Freq:59.98Hz Lamp Flux:765.554x1 lm		
NAME: ASD-CD-TR-3D12AC-WH	TYPE:	WEIGHT:
SPEC.:3000K 90	DIM.:	SERIAL No.:
MFR.: ASD Lighting Corp	SUR.:	Shielding Angle:



LUMINANCE cd/(m2)		
G (DEG)	C0/180	C90/270
85	13	7
80	33	21
75	54	29
70	92	55
65	116	83
60	148	123
55	162	148
50	193	157
45	322	200

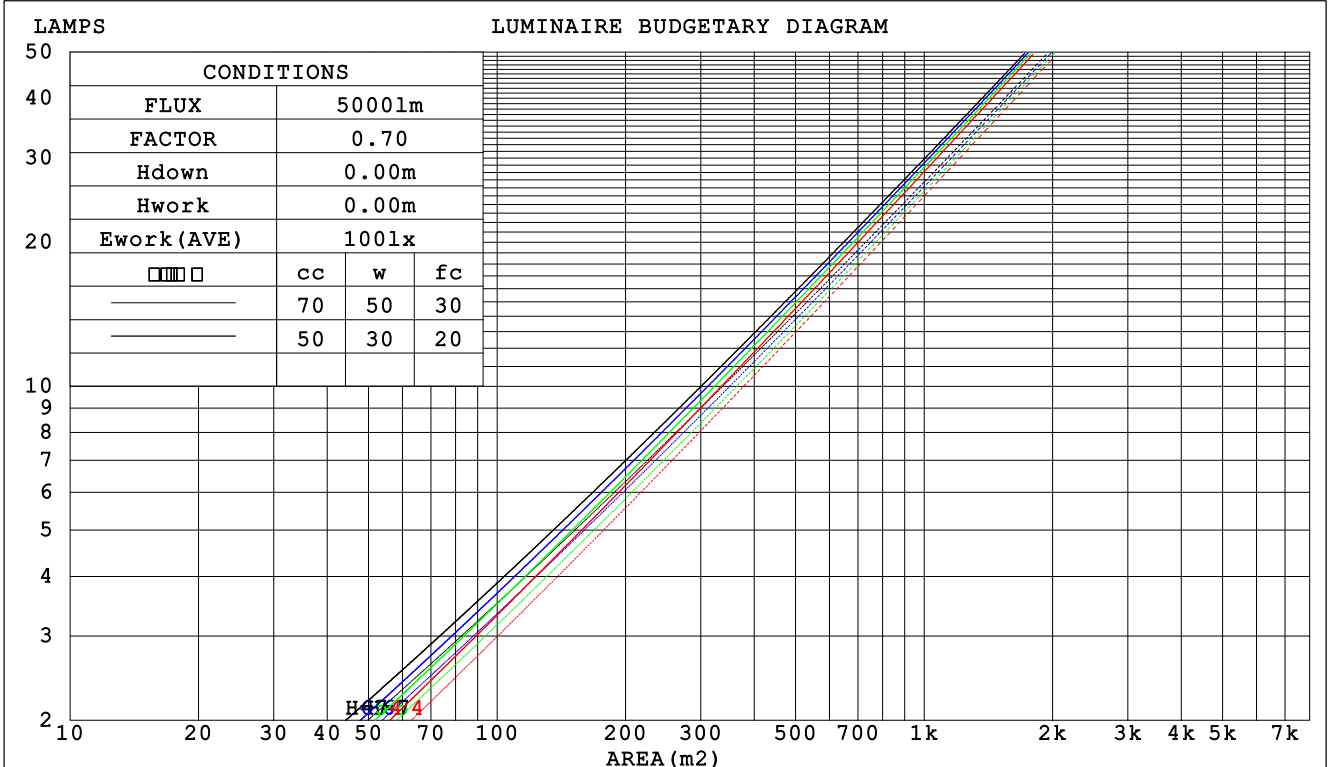
C Range: 0 - 360DEG  
 C Interval: 22.5DEG  
 Test Speed: HIGH  
 Temperature:25.3DEG  
 Operators:  
 Test Date:2021-08-24

Range: 0 - 90DEG  
 Interval: 1.0DEG  
 Test System:EVERFINE GO-SPEX500\_V1 SYSTEM V2.00.421  
 Humidity:65.0%  
 Test Distance:3.080m [K=1.0000]  
 Remarks:

**CU AND LUMINAIRE BUDGETARY ESTIMATE DIAGRAM**

Test:U:120.05V I:0.1240A P:11.460W PF:0.9257 Freq:59.98Hz Lamp Flux:765.554x1 lm		
NAME: ASD-CD-TR-3D12AC-WH	TYPE:	WEIGHT:
SPEC.:3000K 90	DIM.:	SERIAL No.:
MFR.: ASD Lighting Corp	SUR.:	Shielding Angle:

□cc	80%			70%			50%			30%			10%			0
□w	50%	30%	10%	50%	30%	10%	50%	30%	10%	50%	30%	10%	50%	30%	10%	0
□fc	20%			20%			20%			20%			20%			0
RCR	RCR:Room Cavity Ratio						Coefficients of Utilization(CU)									
0.0	1.19	1.19	1.19	1.16	1.16	1.16	1.11	1.11	1.11	1.06	1.06	1.06	1.02	1.02	1.02	1.00
1.0	1.12	1.10	1.08	1.10	1.08	1.06	1.06	1.04	1.03	1.02	1.01	.00	.98	.98	.97	.95
2.0	1.05	1.02	.99	1.03	1.00	.98	1.00	.98	.95	.97	.95	.93	.95	.93	.91	.90
3.0	.99	.95	.92	.98	.94	.91	.95	.92	.89	.93	.90	.88	.91	.89	.87	.85
4.0	.94	.89	.86	.93	.89	.85	.91	.87	.84	.89	.86	.83	.87	.85	.82	.81
5.0	.89	.84	.81	.89	.84	.80	.87	.83	.80	.85	.82	.79	.84	.81	.78	.77
6.0	.85	.80	.76	.84	.80	.76	.83	.79	.76	.82	.78	.75	.80	.77	.75	.73
7.0	.81	.76	.73	.81	.76	.72	.79	.75	.72	.78	.75	.72	.77	.74	.71	.70
8.0	.78	.73	.69	.77	.72	.69	.76	.72	.69	.75	.71	.69	.74	.71	.68	.67
9.0	.75	.70	.66	.74	.69	.66	.73	.69	.66	.72	.68	.66	.72	.68	.65	.64
10.0	.72	.67	.63	.71	.66	.63	.70	.66	.63	.70	.66	.63	.69	.65	.63	.62



C Range: 0 - 360DEG  
 C Interval: 22.5DEG  
 Test Speed: HIGH  
 Temperature:25.3DEG  
 Operators:  
 Test Date:2021-08-24

□ Range: 0 - 90DEG  
 □ Interval: 1.0DEG  
 Test System:EVERFINE GO-SPEX500\_V1 SYSTEM V2.00.421  
 Humidity:65.0%  
 Test Distance:3.080m [K=1.0000]  
 Remarks:

WEC AND CCEC

Test:U:120.05V I:0.1240A P:11.460W PF:0.9257 Freq:59.98Hz Lamp Flux:765.554x1 lm		
NAME: ASD-CD-TR-3D12AC-WH	TYPE:	WEIGHT:
SPEC.:3000K 90	DIM.:	SERIAL No.:
MFR.: ASD Lighting Corp	SUR.:	Shielding Angle:

<input type="checkbox"/> cc	80%	70%	50%	30%	10%	0
<input type="checkbox"/> w	50% 30% 10%	50% 30% 10%	50% 30% 10%	50% 30% 10%	50% 30% 10%	0
<input type="checkbox"/> fc	20%	20%	20%	20%	20%	0
RCR	RCR:Room Cavity Ratio		Wall Exitance Coefficients (WEC)			
0.0						
1.0	.159 .091 .029	.153 .087 .028	.140 .080 .026	.129 .074 .024	.118 .068 .022	
2.0	.151 .082 .025	.145 .080 .025	.135 .075 .023	.125 .070 .022	.116 .066 .021	
3.0	.142 .076 .023	.137 .074 .022	.129 .070 .021	.120 .066 .020	.113 .063 .019	
4.0	.134 .070 .021	.130 .068 .020	.123 .065 .019	.116 .062 .019	.109 .059 .018	
5.0	.127 .065 .019	.124 .064 .019	.118 .061 .018	.111 .059 .017	.106 .057 .017	
6.0	.121 .061 .017	.118 .060 .017	.113 .058 .017	.107 .056 .016	.102 .054 .016	
7.0	.116 .057 .016	.113 .056 .016	.108 .055 .016	.103 .053 .015	.099 .051 .015	
8.0	.110 .054 .015	.108 .053 .015	.104 .052 .015	.100 .050 .015	.096 .049 .014	
9.0	.106 .051 .014	.104 .050 .014	.100 .049 .014	.096 .048 .014	.093 .047 .014	
10.0	.101 .049 .013	.100 .048 .013	.096 .047 .013	.093 .046 .013	.090 .045 .013	

<input type="checkbox"/> cc	80%	70%	50%	30%	10%	0
<input type="checkbox"/> w	50% 30% 10%	50% 30% 10%	50% 30% 10%	50% 30% 10%	50% 30% 10%	0
<input type="checkbox"/> fc	20%	20%	20%	20%	20%	0
RCR	RCR:Room Cavity Ratio		Ceiling Cavity Exitance Coefficients (CCEC)			
0.0	.190 .190 .190	.163 .163 .163	.111 .111 .111	.064 .064 .064	.020 .020 .020	
1.0	.170 .157 .146	.145 .135 .126	.099 .093 .087	.057 .054 .051	.018 .017 .016	
2.0	.153 .133 .115	.131 .114 .100	.090 .079 .069	.052 .046 .041	.017 .015 .013	
3.0	.140 .113 .092	.120 .098 .080	.082 .068 .056	.048 .040 .033	.015 .013 .011	
4.0	.129 .098 .075	.110 .085 .066	.076 .059 .046	.044 .035 .027	.014 .011 .009	
5.0	.119 .086 .062	.102 .075 .054	.070 .052 .038	.041 .031 .023	.013 .010 .008	
6.0	.111 .077 .052	.095 .067 .046	.066 .047 .032	.038 .027 .019	.012 .009 .006	
7.0	.104 .069 .045	.089 .060 .039	.062 .042 .028	.036 .025 .016	.012 .008 .005	
8.0	.098 .063 .038	.084 .054 .033	.058 .038 .024	.034 .022 .014	.011 .007 .005	
9.0	.093 .057 .033	.080 .050 .029	.055 .035 .021	.032 .021 .012	.010 .007 .004	
10.0	.088 .053 .029	.076 .046 .025	.053 .032 .018	.031 .019 .011	.010 .006 .004	

C Range: 0 - 360DEG  
 C Interval: 22.5DEG  
 Test Speed: HIGH  
 Temperature:25.3DEG  
 Operators:  
 Test Date:2021-08-24

Range: 0 - 90DEG  
 Interval: 1.0DEG  
 Test System:EVERFINE GO-SPEX500\_V1 SYSTEM V2.00.421  
 Humidity:65.0%  
 Test Distance:3.080m [K=1.0000]  
 Remarks:

**UGR(Unified Glare Rating) Table**

Test:U:120.05V I:0.1240A P:11.460W PF:0.9257 Freq:59.98Hz Lamp Flux:765.554x1 lm										
NAME: ASD-CD-TR-3D12AC-WH					TYPE:			WEIGHT:		
SPEC.:3000K 90					DIM.:			SERIAL No.:		
MFR.: ASD Lighting Corp					SUR.:			Shielding Angle:		
ceiling/cavity	0.7	0.7	0.5	0.5	0.3	0.7	0.7	0.5	0.5	0.3
walls	0.5	0.3	0.5	0.3	0.3	0.5	0.3	0.5	0.3	0.3
working plane	0.2	0.2	0.2	0.2	0.2	0.2	0.2	0.2	0.2	0.2
Room dimensions	Viewed crosswise					Viewed endwise				
x = 2H y = 2H	4.2	5.0	4.4	5.2	5.4	2.2	3.0	2.5	3.2	3.4
3H	4.2	5.0	4.5	5.2	5.4	2.2	3.0	2.5	3.2	3.4
4H	4.2	4.9	4.5	5.1	5.4	2.2	2.9	2.5	3.1	3.3
6H	4.1	4.8	4.4	5.1	5.3	2.1	2.8	2.4	3.0	3.3
8H	4.1	4.8	4.4	5.0	5.3	2.1	2.7	2.4	3.0	3.2
12H	4.1	4.7	4.4	4.9	5.2	2.0	2.6	2.3	2.9	3.2
4H 2H	4.1	4.8	4.4	5.0	5.2	2.2	2.9	2.5	3.1	3.3
3H	4.2	4.8	4.5	5.0	5.3	2.2	2.9	2.6	3.1	3.4
4H	4.1	4.7	4.5	5.0	5.3	2.2	2.7	2.5	3.0	3.3
6H	4.1	4.6	4.4	4.9	5.2	2.1	2.6	2.5	2.9	3.3
8H	4.0	4.5	4.4	4.8	5.2	2.1	2.5	2.4	2.9	3.2
12H	4.0	4.4	4.4	4.8	5.1	2.0	2.4	2.4	2.8	3.2
8H 4H	4.0	4.5	4.4	4.8	5.2	2.1	2.5	2.5	2.9	3.2
6H	3.9	4.3	4.4	4.7	5.1	2.0	2.4	2.4	2.8	3.2
8H	3.9	4.2	4.3	4.6	5.1	1.9	2.3	2.4	2.7	3.1
12H	3.8	4.1	4.3	4.6	5.0	1.9	2.2	2.4	2.6	3.1
12H 4H	3.9	4.4	4.4	4.7	5.1	2.0	2.4	2.4	2.8	3.2
6H	3.9	4.2	4.3	4.6	5.1	1.9	2.3	2.4	2.7	3.1
8H	3.8	4.1	4.3	4.6	5.0	1.9	2.2	2.4	2.6	3.1
Variations with the observer position at spacings:										
S = 1.0H	+ 3.3 / - 4.3					+ 2.0 / - 2.9				
1.5H	+ 5.5 / - 3.8					+ 3.9 / - 2.4				
2.0H	+ 2.8 / - 1.4					+ 1.3 / - 1.6				

CIE Pub.117, 765.6 lm Total Lamp Luminous Flux Correct (8log(F/F0) = -0.9)  
 Area: 0.111111 m2

C Range: 0 - 360DEG  
 C Interval: 22.5DEG  
 Test Speed: HIGH  
 Temperature:25.3DEG  
 Operators:  
 Test Date:2021-08-24

Range: 0 - 90DEG  
 Interval: 1.0DEG  
 Test System:EVERFINE GO-SPEX500\_V1 SYSTEM V2.00.421  
 Humidity:65.0%  
 Test Distance:3.080m [K=1.0000]  
 Remarks:

**UTILIZATION FACTORS TABLE**

Test:U:120.05V I:0.1240A P:11.460W PF:0.9257 Freq:59.98Hz Lamp Flux:765.554x1 lm		
NAME: ASD-CD-TR-3D12AC-WH	TYPE:	WEIGHT:
SPEC.:3000K 90	DIM.:	SERIAL No.:
MFR.: ASD Lighting Corp	SUR.:	Shielding Angle:

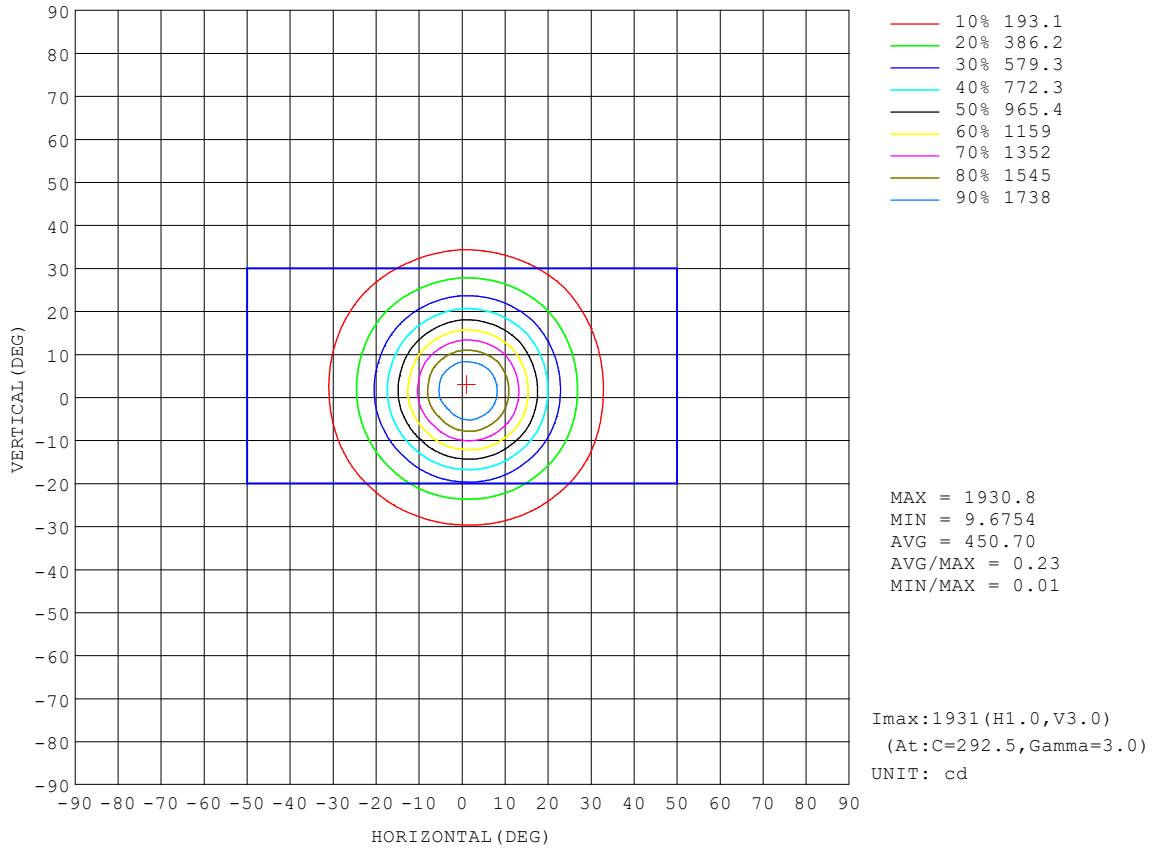
REFLECTANCE										
Ceiling	0.8	0.8	0.8	0.7	0.7	0.7	0.5	0.5	0.5	0
Walls	0.7	0.5	0.3	0.7	0.5	0.3	0.7	0.5	0.3	0
Working plane	0.2	0.2	0.2	0.2	0.2	0.2	0.2	0.2	0.2	0
ROOM INDEX	UTILIZATION FACTORS (PERCENT) $k(RI) \times RCR = 5$									
k = 0.60	89	83	79	88	82	79	87	82	79	75
0.80	96	90	87	95	90	87	94	89	86	83
1.00	100	95	91	99	94	91	98	94	90	87
1.25	104	99	96	103	98	95	101	97	94	90
1.50	107	102	99	105	101	98	103	100	97	93
2.00	109	105	102	108	104	101	105	102	100	95
2.50	111	107	104	109	106	103	106	103	101	95
3.00	112	109	106	110	107	105	107	105	103	97
4.00	114	111	109	112	110	108	108	107	105	98
5.00	115	113	111	113	111	110	109	108	107	99
ROOM INDEX	UF(total)									Direct
According to DIN EN 13032-2 2004			Suspended				SHRNOM = 1.25			

C Range: 0 - 360DEG  
 C Interval: 22.5DEG  
 Test Speed: HIGH  
 Temperature:25.3DEG  
 Operators:  
 Test Date:2021-08-24

Range: 0 - 90DEG  
 Interval: 1.0DEG  
 Test System:EVERFINE GO-SPEX500\_V1 SYSTEM V2.00.421  
 Humidity:65.0%  
 Test Distance:3.080m [K=1.0000]  
 Remarks:

**ISOCANDELA DIAGRAM**

Test:U:120.05V I:0.1240A P:11.460W PF:0.9257 Freq:59.98Hz Lamp Flux:765.554x1 lm		
NAME: ASD-CD-TR-3D12AC-WH	TYPE:	WEIGHT:
SPEC.:3000K 90	DIM.:	SERIAL No.:
MFR.: ASD Lighting Corp	SUR.:	Shielding Angle:



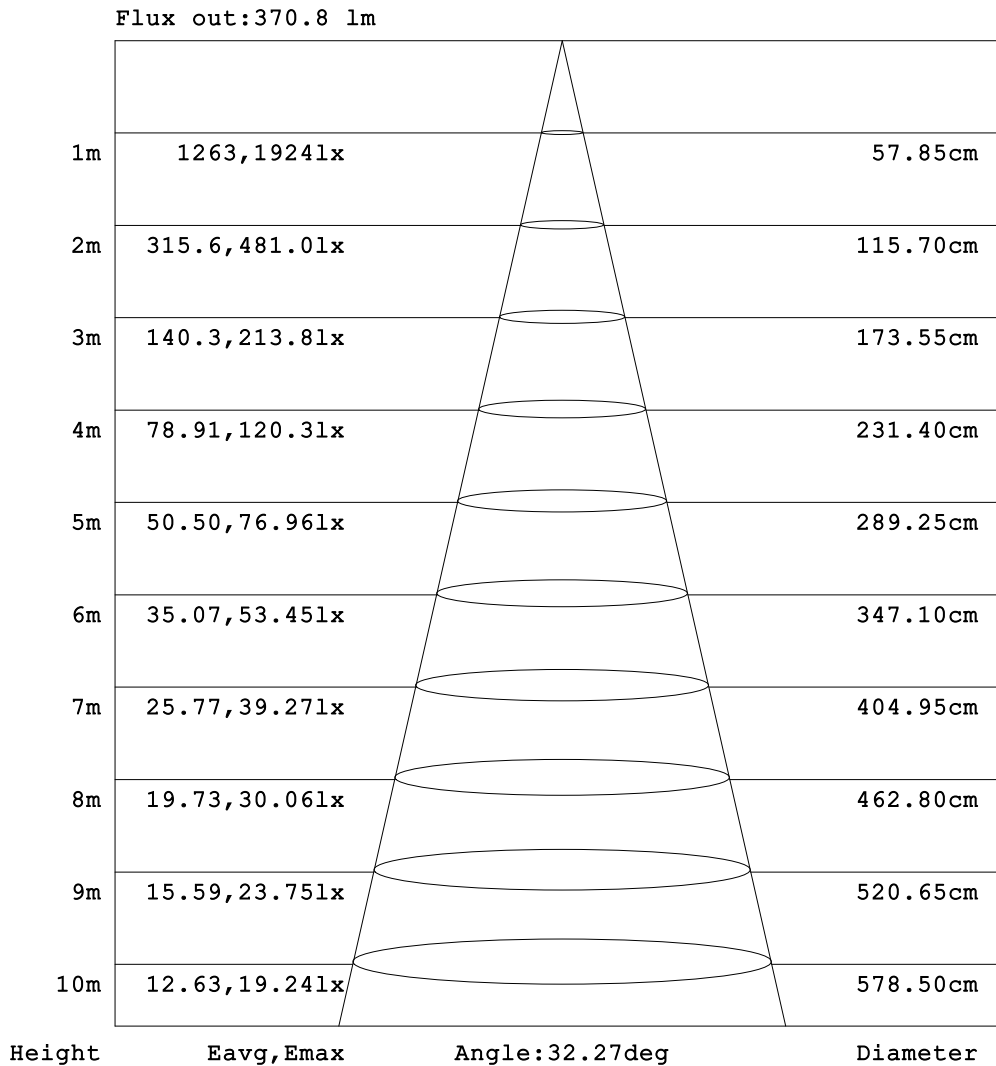
C Range: 0 - 360DEG  
 C Interval: 22.5DEG  
 Test Speed: HIGH  
 Temperature:25.3DEG  
 Operators:  
 Test Date:2021-08-24

Range: 0 - 90DEG  
 Interval: 1.0DEG  
 Test System:EVERFINE GO-SPEX500\_V1 SYSTEM V2.00.421  
 Humidity:65.0%  
 Test Distance:3.080m [K=1.0000]  
 Remarks:



**AAI Figure**

Test:U:120.05V I:0.1240A P:11.460W PF:0.9257 Freq:59.98Hz Lamp Flux:765.554x1 lm		
NAME: ASD-CD-TR-3D12AC-WH	TYPE:	WEIGHT:
SPEC.:3000K 90	DIM.:	SERIAL No.:
MFR.: ASD Lighting Corp	SUR.:	Shielding Angle:



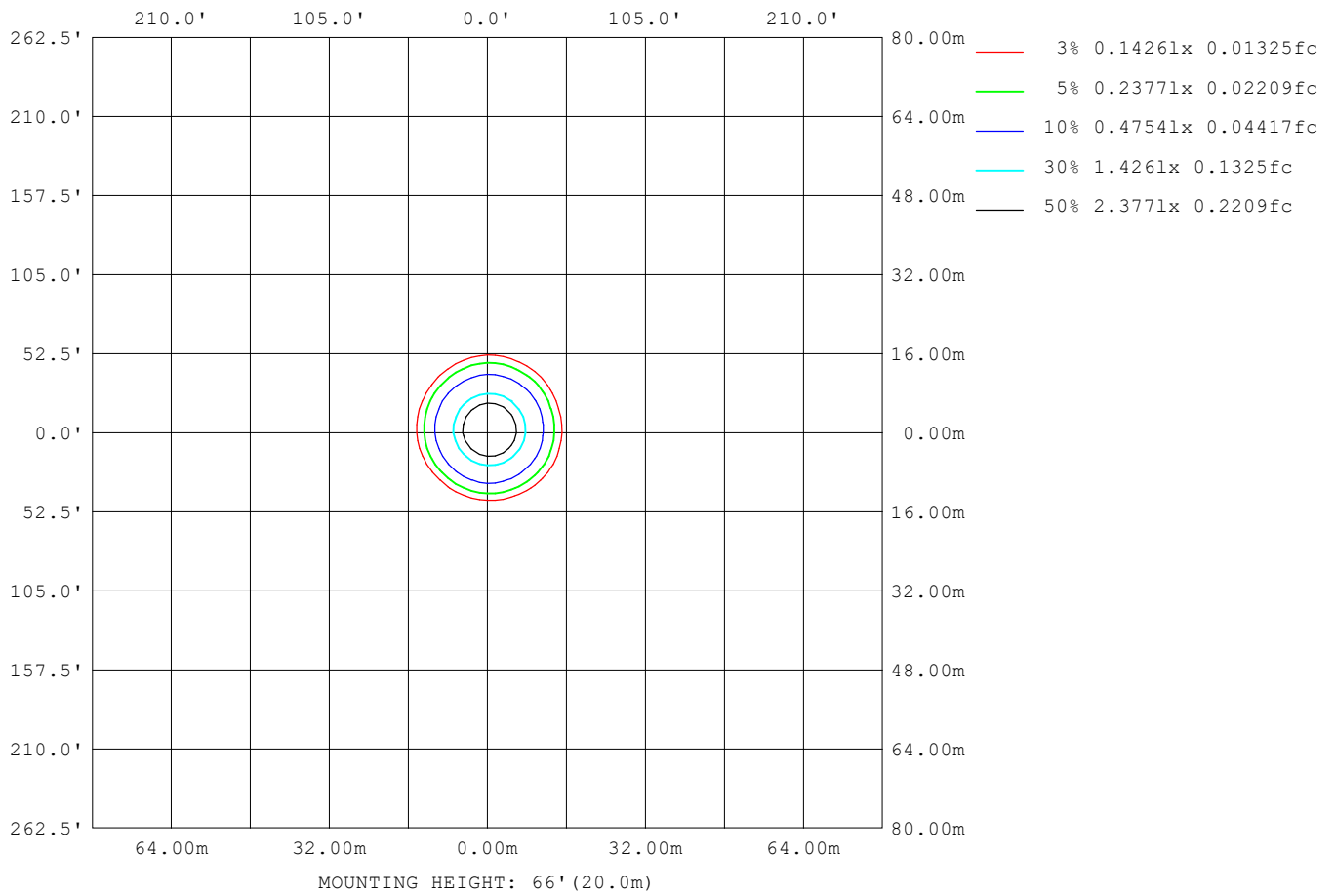
Note:The Curves indicate the illuminated area and the average illumination when the luminaire is at different distance.

C Range: 0 - 360DEG  
 C Interval: 22.5DEG  
 Test Speed: HIGH  
 Temperature:25.3DEG  
 Operators:  
 Test Date:2021-08-24

Range: 0 - 90DEG  
 Interval: 1.0DEG  
 Test System:EVERFINE GO-SPEX500\_V1 SYSTEM V2.00.421  
 Humidity:65.0%  
 Test Distance:3.080m [K=1.0000]  
 Remarks:

**ISOLUX DIAGRAM**

Test:U:120.05V I:0.1240A P:11.460W PF:0.9257 Freq:59.98Hz Lamp Flux:765.554x1 lm		
NAME: ASD-CD-TR-3D12AC-WH	TYPE:	WEIGHT:
SPEC.:3000K 90	DIM.:	SERIAL No.:
MFR.: ASD Lighting Corp	SUR.:	Shielding Angle:



C Range: 0 - 360DEG  
 C Interval: 22.5DEG  
 Test Speed: HIGH  
 Temperature:25.3DEG  
 Operators:  
 Test Date:2021-08-24

Range: 0 - 90DEG  
 Interval: 1.0DEG  
 Test System:EVERFINE GO-SPEX500\_V1 SYSTEM V2.00.421  
 Humidity:65.0%  
 Test Distance:3.080m [K=1.0000]  
 Remarks:

**LED Avg.L Report**

Test:U:120.05V I:0.1240A P:11.460W PF:0.9257 Freq:59.98Hz Lamp Flux:765.554x1 lm		
NAME: ASD-CD-TR-3D12AC-WH	TYPE:	WEIGHT:
SPEC.:3000K 90	DIM.:	SERIAL No.:
MFR.: ASD Lighting Corp	SUR.:	Shielding Angle:

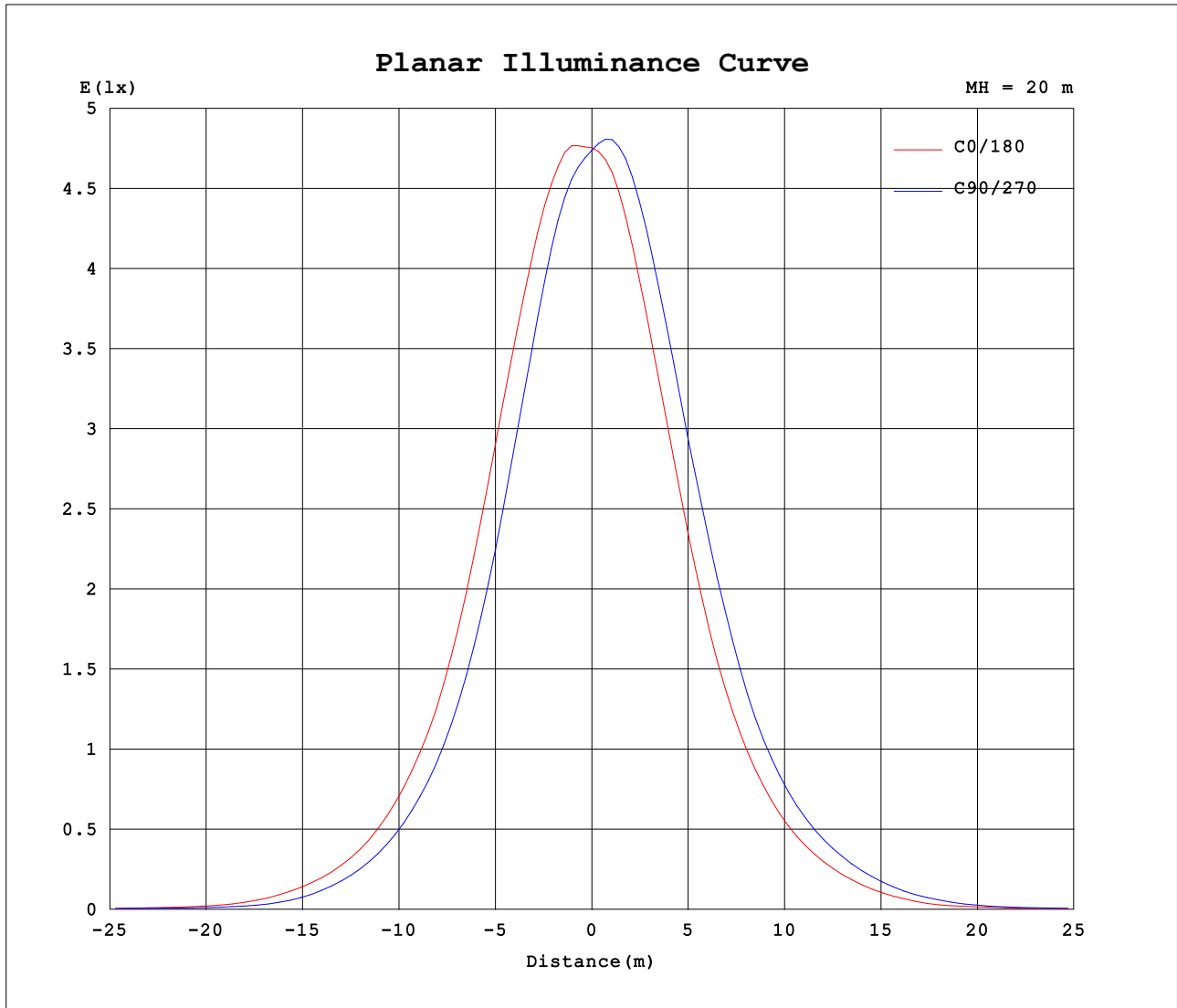
AvgL	cd/m2
L_0~180 (65) av	105
L_0~180 (75) av	43
L_0~180 (85) av	11
L_90~270 (65) av	90
L_90~270 (75) av	28
L_90~270 (85) av	7
L_45 (65) av	101
L_45 (75) av	32
L_45 (85) av	10

Standard: GB/T 29293-2012

C Range: 0 - 360DEG  
 C Interval: 22.5DEG  
 Test Speed: HIGH  
 Temperature:25.3DEG  
 Operators:  
 Test Date:2021-08-24

Range: 0 - 90DEG  
 Interval: 1.0DEG  
 Test System:EVERFINE GO-SPEX500\_V1 SYSTEM V2.00.421  
 Humidity:65.0%  
 Test Distance:3.080m [K=1.0000]  
 Remarks:

**Planar Illuminance Curve**



C Range: 0 - 360DEG  
 C Interval: 22.5DEG  
 Test Speed: HIGH  
 Temperature: 25.3DEG  
 Operators:  
 Test Date: 2021-08-24

Range: 0 - 90DEG  
 Interval: 1.0DEG  
 Test System: EVERFINE GO-SPEX500\_V1 SYSTEM V2.00.421  
 Humidity: 65.0%  
 Test Distance: 3.080m [K=1.0000]  
 Remarks:

**LUMINOUS DISTRIBUTION INTENSITY DATA**

Test:U:120.05V I:0.1240A P:11.460W PF:0.9257 Freq:59.98Hz Lamp Flux:765.554x1 lm		
NAME: ASD-CD-TR-3D12AC-WH	TYPE:	WEIGHT:
SPEC.:3000K 90	DIM.:	SERIAL No.:
MFR.: ASD Lighting Corp	SUR.:	Shielding Angle:

Table--1

UNIT: cd

C (DEG) □ (DEG)	0	22.5	45	67.5	90	112.5	135	157.5	180	202.5	225	247.5	270	292.5	315	337.5			
0	1897	1897	1897	1897	1897	1897	1897	1897	1897	1897	1897	1897	1897	1897	1897	1897			
5	1872	1840	1802	1775	1742	1712	1694	1715	1747	1782	1835	1870	1898	1910	1919	1899			
10	1599	1548	1473	1406	1347	1313	1291	1325	1369	1421	1502	1560	1615	1646	1670	1649			
15	1183	1125	1029	962	905	879	867	897	947	996	1077	1145	1210	1243	1267	1234			
20	761	707	641	596	558	542	535	559	598	638	699	754	815	836	847	811			
25	465	427	383	354	333	323	322	338	365	396	438	472	506	523	528	498			
30	269	249	218	200	185	177	181	197	214	238	266	283	309	314	314	295			
35	145	136	117	100	88.1	86.3	87.6	98.3	113	125	143	161	178	177	177	159			
40	66.3	59.5	49.0	39.6	32.3	31.3	34.0	39.2	46.4	50.3	60.1	73.8	83.7	88.4	82.0	70.5			
45	25.2	22.8	19.9	17.4	15.7	16.3	16.6	17.6	19.6	20.5	22.4	25.2	31.0	32.2	29.5	25.7			
50	13.8	13.0	11.9	11.2	11.2	10.8	11.4	11.7	11.7	12.4	13.0	13.2	14.2	14.2	15.2	14.3			
55	10.3	10.4	9.87	9.37	9.43	9.09	9.46	9.47	9.61	10.2	10.6	10.4	10.6	10.4	10.5	10.3			
60	8.19	8.10	7.53	6.78	6.85	6.61	6.95	7.03	7.19	7.76	8.10	7.18	7.39	7.16	8.16	8.13			
65	5.42	5.15	4.70	3.99	3.89	3.76	3.96	4.12	4.41	5.05	5.12	4.49	4.52	4.50	5.22	5.54			
70	3.49	3.22	2.79	2.40	2.11	2.13	2.33	2.57	2.78	3.09	2.87	2.66	2.60	2.78	3.19	3.54			
75	1.54	1.37	0.97	0.88	0.83	0.81	0.81	0.87	0.93	0.92	0.85	0.79	0.80	0.84	1.04	1.60			
80	0.64	0.59	0.48	0.42	0.40	0.39	0.41	0.46	0.51	0.47	0.41	0.38	0.38	0.40	0.47	0.56			
85	0.12	0.20	0.11	0.08	0.07	0.07	0.09	0.14	0.09	0.13	0.09	0.07	0.07	0.07	0.11	0.18			
90	0.01	0.01	0.01	0.01	0.01	0.01	0.00	0.01	0.01	0.01	0.01	0.01	0.01	0.01	0.00	0.01			

C Range: 0 - 360DEG  
 C Interval: 22.5DEG  
 Test Speed: HIGH  
 Temperature:25.3DEG  
 Operators:  
 Test Date:2021-08-24

□ Range: 0 - 90DEG  
 □ Interval: 1.0DEG  
 Test System:EVERFINE GO-SPEX500\_V1 SYSTEM V2.00.421  
 Humidity:65.0%  
 Test Distance:3.080m [K=1.0000]  
 Remarks: