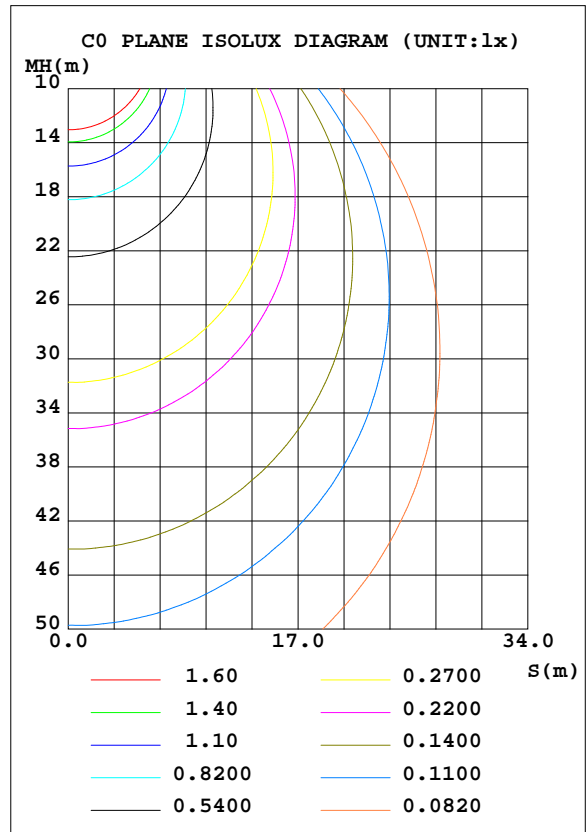
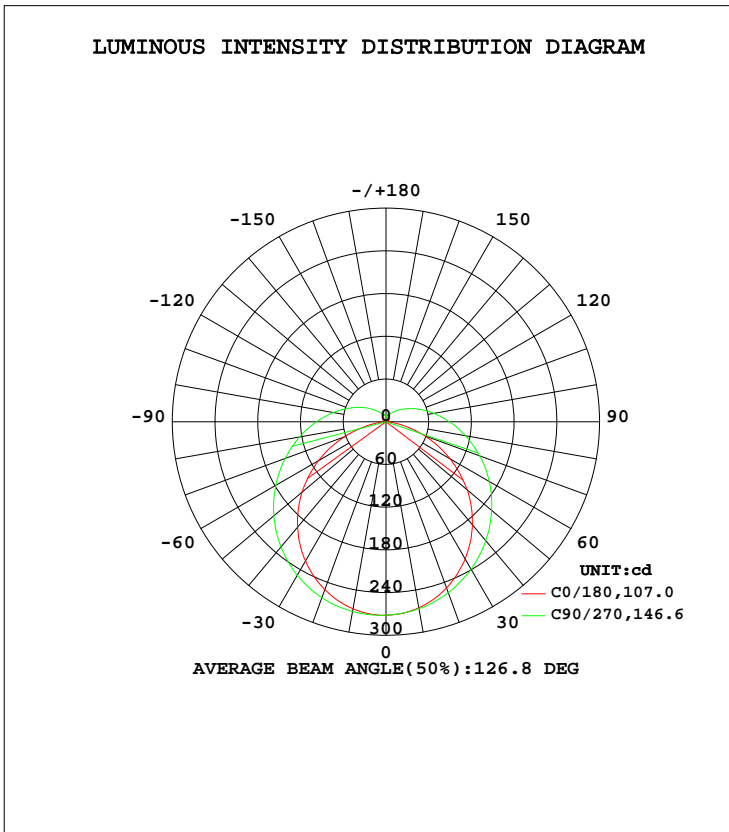


LUMINAIRE PHOTOMETRIC TEST REPORT

| | | |
|---|-----------|---------------------|
| Test:U:120.1V I:0.1339A P:15.43W PF:0.9598 Lamp Flux:1081.68x1 lm | | |
| NAME: LED Luminaires | TYPE:N/A | WEIGHT:N/A |
| SPEC.:N/A | DIM.: N/A | SERIAL No.:N/A |
| MFR.: RISING-SUN | SUR.:N/A | Shielding Angle:N/A |

| DATA OF LAMP | | PHOTOMETRIC DATA Eff: 70.10 lm/W | | | |
|------------------|-------------------|----------------------------------|---------|--------------------|----------|
| MODEL | PSZ2S221111001-10 | I _{max} (cd) | 272.1 | S/MH(C0/180) | 1.22 |
| NOMINAL POWER(W) | | LOR(%) | 100.0 | S/MH(C90/270) | 1.31 |
| RATED VOLTAGE(V) | 120 | TOTAL FLUX(lm) | 1081.7 | η UP, DN(C0-180) | 7.2,44.1 |
| NOMINAL FLUX(lm) | 1081.68 | CIE CLASS | SEMI-D. | η UP, DN(C180-360) | 6.7,42.0 |
| LAMPS INSIDE | 1 | η up(%) | 13.9 | CIBSE SHR NOM | 1.50 |
| TEST VOLTAGE(V) | 120 | η down(%) | 86.1 | CIBSE SHR MAX | 1.50 |



C Range: 0 - 360DEG
 C Interval: 22.5DEG
 Test Speed: HIGH
 Temperature:24.3DEG
 Operators:Carl
 Test Date:2022-12-09

γ Range: 0 - 180DEG
 γ Interval: 1.0DEG
 Test System:EVERFINE GO-R5000_V2 SYSTEM V2.0.351
 Humidity:48%
 Test Distance:2.532m [K=1.0000]
 Remarks:

ZONAL FLUX DIAGRAM

ZONAL FLUX DIAGRAM:

| γ | C0 | C45 | C90 | C135 | C180 | C225 | C270 | C315 | γ | Φ zone | Φ total | %lum,lamp |
|-----|-----------------------|-------|-------|-------|--------|-------|-------|-------|---------|---------|---------|-----------|
| 10 | 266.8 | 269.2 | 270.7 | 268.6 | 265.4 | 266.0 | 266.5 | 266.1 | 0- 10 | 25.73 | 25.73 | 2.38,2.38 |
| 20 | 251.1 | 258.5 | 263.0 | 256.9 | 248.4 | 251.1 | 255.5 | 252.3 | 10- 20 | 73.96 | 99.69 | 9.22,9.22 |
| 30 | 226.0 | 238.6 | 249.0 | 237.1 | 222.4 | 229.5 | 239.1 | 231.2 | 20- 30 | 113.1 | 212.7 | 19.7,19.7 |
| 40 | 193.2 | 212.6 | 229.5 | 210.9 | 188.9 | 202.2 | 217.9 | 204.4 | 30- 40 | 138.7 | 351.4 | 32.5,32.5 |
| 50 | 153.8 | 182.1 | 205.6 | 180.3 | 149.1 | 171.4 | 193.7 | 173.7 | 40- 50 | 148.4 | 499.8 | 46.2,46.2 |
| 60 | 109.5 | 148.8 | 178.8 | 147.2 | 103.9 | 137.6 | 167.5 | 140.4 | 50- 60 | 142.5 | 642.3 | 59.4,59.4 |
| 70 | 62.51 | 115.3 | 150.7 | 114.5 | 57.71 | 106.0 | 139.9 | 108.0 | 60- 70 | 123.3 | 765.6 | 70.8,70.8 |
| 80 | 19.75 | 85.50 | 123.4 | 84.98 | 16.91 | 77.53 | 113.5 | 79.23 | 70- 80 | 96.26 | 861.9 | 79.7,79.7 |
| 90 | 0.0887 | 60.29 | 97.60 | 60.43 | 0.0491 | 54.41 | 89.18 | 55.54 | 80- 90 | 69.18 | 931.1 | 86.1,86.1 |
| 100 | 0.5569 | 41.73 | 75.21 | 42.30 | 0.6507 | 37.89 | 68.38 | 38.44 | 90-100 | 48.92 | 980.0 | 90.6,90.6 |
| 110 | 2.235 | 29.00 | 55.78 | 29.64 | 2.315 | 26.61 | 51.01 | 26.83 | 100-110 | 34.37 | 1014 | 93.8,93.8 |
| 120 | 4.153 | 20.63 | 40.43 | 21.22 | 4.139 | 19.42 | 37.13 | 19.48 | 110-120 | 23.83 | 1038 | 96,96 |
| 130 | 6.100 | 15.48 | 28.59 | 15.83 | 5.982 | 14.79 | 26.65 | 15.00 | 120-130 | 16.33 | 1055 | 97.5,97.5 |
| 140 | 7.970 | 12.35 | 20.00 | 12.60 | 7.674 | 11.77 | 18.96 | 12.58 | 130-140 | 11.09 | 1066 | 98.5,98.5 |
| 150 | 9.435 | 10.66 | 14.48 | 10.88 | 9.160 | 10.02 | 13.84 | 11.25 | 140-150 | 7.487 | 1073 | 99.2,99.2 |
| 160 | 10.60 | 10.20 | 11.40 | 10.01 | 9.879 | 9.446 | 10.99 | 10.54 | 150-160 | 4.952 | 1078 | 99.7,99.7 |
| 170 | 9.692 | 9.494 | 10.48 | 9.815 | 7.932 | 9.198 | 9.919 | 9.984 | 160-170 | 2.893 | 1081 | 99.9,99.9 |
| 180 | 4.355 | 2.985 | 0 | 3.026 | 4.708 | 4.088 | 2.505 | 2.493 | 170-180 | 0.7588 | 1082 | 100,100 |
| DEG | LUMINOUS INTENSITY:cd | | | | | | | | | UNIT:lm | | |

Conical surface Flux(90deg): 425.41 lm

%lum = 39.3%
%lamp = 39.3%

Conical surface Flux(120deg): 642.31 lm

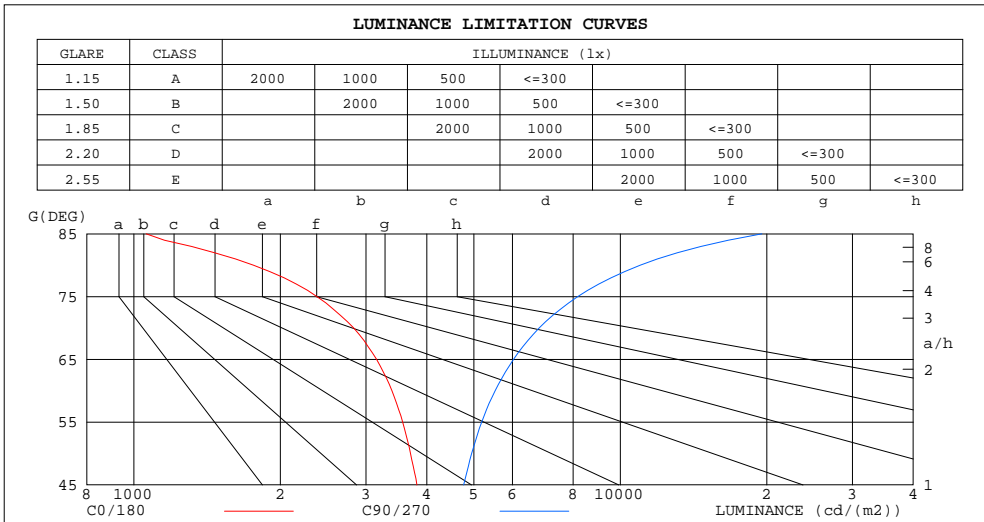
%lum = 59.4%
%lamp = 59.4%

C Range: 0 - 360DEG
C Interval: 22.5DEG
Test Speed: HIGH
Temperature:24.3DEG
Operators:Carl
Test Date:2022-12-09

γ Range: 0 - 180DEG
γ Interval: 1.0DEG
Test System:EVERFINE GO-R5000_V2 SYSTEM V2.0.351
Humidity:48%
Test Distance:2.532m [K=1.0000]
Remarks:

LUMINANCE LIMITATION CURVES

| | | |
|---|-----------|---------------------|
| Test:U:120.1V I:0.1339A P:15.43W PF:0.9598 Lamp Flux:1081.68x1 lm | | |
| NAME: LED Luminaires | TYPE:N/A | WEIGHT:N/A |
| SPEC.:N/A | DIM.: N/A | SERIAL No.:N/A |
| MFR.: RISING-SUN | SUR.:N/A | Shielding Angle:N/A |



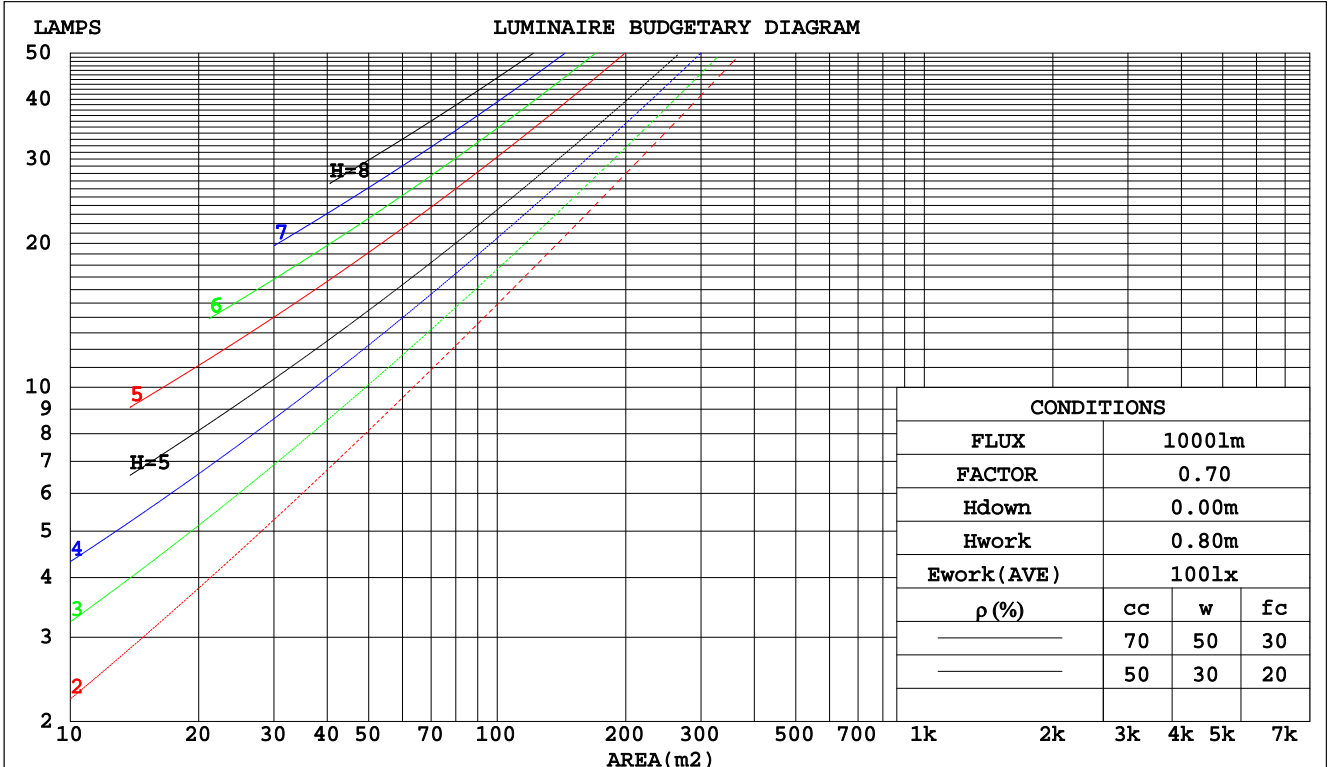
C Range: 0 - 360DEG
 C Interval: 22.5DEG
 Test Speed: HIGH
 Temperature:24.3DEG
 Operators:Carl
 Test Date:2022-12-09

γ Range: 0 - 180DEG
 γ Interval: 1.0DEG
 Test System:EVERFINE GO-R5000_V2 SYSTEM V2.0.351
 Humidity:48%
 Test Distance:2.532m [K=1.0000]
 Remarks:

CU AND LUMINAIRE BUDGETARY ESTIMATE DIAGRAM

| | | |
|---|-----------|---------------------|
| Test:U:120.1V I:0.1339A P:15.43W PF:0.9598 Lamp Flux:1081.68x1 lm | | |
| NAME: LED Luminaires | TYPE:N/A | WEIGHT:N/A |
| SPEC.:N/A | DIM.: N/A | SERIAL No.:N/A |
| MFR.: RISING-SUN | SUR.:N/A | Shielding Angle:N/A |

| pcc | 80% | | | 70% | | | 50% | | | 30% | | | 10% | | | 0 |
|------|---------------------------------|------|------|------|------|------|------|------|------|-----|-----|-----|-----|-----|-----|-----|
| | 50% | 30% | 10% | 50% | 30% | 10% | 50% | 30% | 10% | 50% | 30% | 10% | 50% | 30% | 10% | 0 |
| pw | | | | | | | | | | | | | | | | 0 |
| pfc | 20% | | | 20% | | | 20% | | | 20% | | | 20% | | | 0 |
| RCR | RCR:Room Cavity Ratio | | | | | | | | | | | | | | | |
| | Coefficients of Utilization(CU) | | | | | | | | | | | | | | | |
| 0.0 | 1.16 | 1.16 | 1.16 | 1.11 | 1.11 | 1.11 | 1.03 | 1.03 | 1.03 | .96 | .96 | .96 | .89 | .89 | .89 | .86 |
| 1.0 | .97 | .92 | .88 | .94 | .89 | .85 | .87 | .83 | .80 | .81 | .78 | .75 | .75 | .72 | .70 | .67 |
| 2.0 | .84 | .76 | .70 | .81 | .74 | .68 | .75 | .69 | .64 | .69 | .65 | .60 | .64 | .60 | .57 | .54 |
| 3.0 | .73 | .64 | .57 | .70 | .62 | .56 | .65 | .58 | .53 | .60 | .55 | .50 | .56 | .51 | .48 | .45 |
| 4.0 | .64 | .55 | .48 | .62 | .53 | .47 | .58 | .50 | .44 | .53 | .47 | .42 | .50 | .45 | .40 | .38 |
| 5.0 | .57 | .48 | .41 | .55 | .46 | .40 | .51 | .44 | .38 | .48 | .41 | .36 | .45 | .39 | .35 | .32 |
| 6.0 | .51 | .42 | .35 | .49 | .41 | .34 | .46 | .39 | .33 | .43 | .37 | .32 | .40 | .35 | .30 | .28 |
| 7.0 | .46 | .37 | .31 | .45 | .36 | .30 | .42 | .34 | .29 | .39 | .33 | .28 | .37 | .31 | .27 | .25 |
| 8.0 | .42 | .33 | .27 | .41 | .33 | .27 | .38 | .31 | .26 | .36 | .30 | .25 | .34 | .28 | .24 | .22 |
| 9.0 | .38 | .30 | .24 | .37 | .29 | .24 | .35 | .28 | .23 | .33 | .27 | .22 | .31 | .26 | .21 | .20 |
| 10.0 | .35 | .27 | .22 | .34 | .27 | .22 | .32 | .26 | .21 | .31 | .24 | .20 | .29 | .23 | .19 | .18 |



C Range: 0 - 360DEG
 C Interval: 22.5DEG
 Test Speed: HIGH
 Temperature: 24.3DEG
 Operators: Carl
 Test Date: 2022-12-09

γ Range: 0 - 180DEG
 γ Interval: 1.0DEG
 Test System: EVERFINE GO-R5000_V2 SYSTEM V2.0.351
 Humidity: 48%
 Test Distance: 2.532m [K=1.0000]
 Remarks:

WEC AND CCEC

| | | |
|---|-----------|---------------------|
| Test:U:120.1V I:0.1339A P:15.43W PF:0.9598 Lamp Flux:1081.68x1 lm | | |
| NAME: LED Luminaires | TYPE:N/A | WEIGHT:N/A |
| SPEC.:N/A | DIM.: N/A | SERIAL No.:N/A |
| MFR.: RISING-SUN | SUR.:N/A | Shielding Angle:N/A |

| ρcc | 80% | | | 70% | | | 50% | | | 30% | | | 10% | | | 0 |
|------|-----------------------|------|------|------|------|------|---------------------------------|------|------|------|------|------|------|------|------|---|
| ρw | 50% | 30% | 10% | 50% | 30% | 10% | 50% | 30% | 10% | 50% | 30% | 10% | 50% | 30% | 10% | 0 |
| ρfc | 20% | | | 20% | | | 20% | | | 20% | | | 20% | | | 0 |
| RCR | RCR:Room Cavity Ratio | | | | | | Wall Exitance Coefficients(WEC) | | | | | | | | | |
| 0.0 | | | | | | | | | | | | | | | | |
| 1.0 | .369 | .210 | .067 | .358 | .204 | .065 | .336 | .193 | .062 | .317 | .183 | .059 | .298 | .173 | .056 | |
| 2.0 | .324 | .178 | .054 | .314 | .173 | .053 | .295 | .164 | .051 | .277 | .155 | .049 | .260 | .147 | .046 | |
| 3.0 | .290 | .154 | .046 | .281 | .150 | .045 | .263 | .143 | .043 | .247 | .136 | .042 | .232 | .129 | .040 | |
| 4.0 | .262 | .136 | .040 | .254 | .133 | .039 | .238 | .126 | .038 | .224 | .120 | .036 | .210 | .114 | .035 | |
| 5.0 | .239 | .122 | .035 | .232 | .119 | .035 | .218 | .113 | .033 | .204 | .108 | .032 | .192 | .103 | .031 | |
| 6.0 | .220 | .110 | .032 | .213 | .108 | .031 | .200 | .103 | .030 | .188 | .098 | .029 | .177 | .093 | .028 | |
| 7.0 | .203 | .100 | .028 | .197 | .098 | .028 | .185 | .094 | .027 | .174 | .089 | .026 | .164 | .085 | .025 | |
| 8.0 | .189 | .092 | .026 | .183 | .090 | .025 | .172 | .086 | .025 | .162 | .082 | .024 | .153 | .078 | .023 | |
| 9.0 | .176 | .085 | .024 | .171 | .083 | .023 | .161 | .080 | .023 | .152 | .076 | .022 | .143 | .073 | .021 | |
| 10.0 | .165 | .079 | .022 | .160 | .077 | .022 | .151 | .074 | .021 | .142 | .071 | .020 | .134 | .068 | .019 | |

| ρcc | 80% | | | 70% | | | 50% | | | 30% | | | 10% | | | 0 |
|------|-----------------------|------|------|------|------|------|--|------|------|------|------|------|------|------|------|---|
| ρw | 50% | 30% | 10% | 50% | 30% | 10% | 50% | 30% | 10% | 50% | 30% | 10% | 50% | 30% | 10% | 0 |
| ρfc | 20% | | | 20% | | | 20% | | | 20% | | | 20% | | | 0 |
| RCR | RCR:Room Cavity Ratio | | | | | | Ceiling Cavity Exitance Coefficients(CCEC) | | | | | | | | | |
| 0.0 | .297 | .297 | .297 | .253 | .253 | .253 | .173 | .173 | .173 | .099 | .099 | .099 | .032 | .032 | .032 | |
| 1.0 | .291 | .263 | .237 | .249 | .225 | .204 | .171 | .155 | .141 | .098 | .090 | .082 | .031 | .029 | .026 | |
| 2.0 | .284 | .239 | .202 | .243 | .206 | .174 | .167 | .143 | .122 | .096 | .083 | .071 | .031 | .027 | .023 | |
| 3.0 | .277 | .223 | .180 | .237 | .192 | .156 | .163 | .133 | .109 | .094 | .078 | .064 | .030 | .025 | .021 | |
| 4.0 | .269 | .210 | .165 | .231 | .181 | .143 | .159 | .126 | .101 | .092 | .074 | .060 | .030 | .024 | .020 | |
| 5.0 | .261 | .200 | .155 | .224 | .173 | .135 | .155 | .121 | .095 | .090 | .071 | .056 | .029 | .023 | .019 | |
| 6.0 | .254 | .192 | .148 | .218 | .166 | .129 | .150 | .116 | .091 | .087 | .068 | .054 | .028 | .022 | .018 | |
| 7.0 | .247 | .185 | .142 | .212 | .161 | .124 | .147 | .113 | .088 | .085 | .066 | .052 | .028 | .022 | .017 | |
| 8.0 | .240 | .180 | .138 | .207 | .156 | .121 | .143 | .109 | .086 | .083 | .065 | .051 | .027 | .021 | .017 | |
| 9.0 | .234 | .175 | .135 | .202 | .152 | .118 | .140 | .107 | .084 | .081 | .063 | .050 | .026 | .021 | .017 | |
| 10.0 | .228 | .171 | .133 | .197 | .148 | .116 | .136 | .104 | .082 | .080 | .062 | .049 | .026 | .020 | .016 | |

C Range: 0 - 360DEG
 C Interval: 22.5DEG
 Test Speed: HIGH
 Temperature:24.3DEG
 Operators:Carl
 Test Date:2022-12-09

γ Range: 0 - 180DEG
 γ Interval: 1.0DEG
 Test System:EVERFINE GO-R5000_V2 SYSTEM V2.0.351
 Humidity:48%
 Test Distance:2.532m [K=1.0000]
 Remarks:

UGR(Unified Glare Rating) Table

| | | | | | | | | | | |
|---|------------------|------|------|------|-----------|----------------|------|---------------------|------|------|
| Test:U:120.1V I:0.1339A P:15.43W PF:0.9598 Lamp Flux:1081.68x1 lm | | | | | | | | | | |
| NAME: LED Luminaires | | | | | TYPE:N/A | | | WEIGHT:N/A | | |
| SPEC.:N/A | | | | | DIM.: N/A | | | SERIAL No.:N/A | | |
| MFR.: RISING-SUN | | | | | SUR.:N/A | | | Shielding Angle:N/A | | |
| ceiling/cavity | 0.7 | 0.7 | 0.5 | 0.5 | 0.3 | 0.7 | 0.7 | 0.5 | 0.5 | 0.3 |
| walls | 0.5 | 0.3 | 0.5 | 0.3 | 0.3 | 0.5 | 0.3 | 0.5 | 0.3 | 0.3 |
| working plane | 0.2 | 0.2 | 0.2 | 0.2 | 0.2 | 0.2 | 0.2 | 0.2 | 0.2 | 0.2 |
| Room dimensions | Viewed crosswise | | | | | Viewed endwise | | | | |
| x = 2H y = 2H | 16.2 | 17.6 | 16.7 | 18.1 | 18.6 | 18.2 | 19.6 | 18.6 | 20.0 | 20.5 |
| 3H | 17.6 | 18.9 | 18.1 | 19.4 | 19.9 | 20.7 | 22.0 | 21.2 | 22.5 | 23.0 |
| 4H | 18.1 | 19.3 | 18.6 | 19.8 | 20.3 | 22.1 | 23.3 | 22.6 | 23.8 | 24.3 |
| 6H | 18.4 | 19.5 | 18.9 | 20.0 | 20.6 | 23.6 | 24.7 | 24.1 | 25.2 | 25.8 |
| 8H | 18.4 | 19.5 | 19.0 | 20.1 | 20.7 | 24.4 | 25.5 | 24.9 | 26.0 | 26.6 |
| 12H | 18.4 | 19.5 | 19.0 | 20.0 | 20.6 | 25.4 | 26.4 | 25.9 | 27.0 | 27.6 |
| 4H 2H | 17.3 | 18.5 | 17.8 | 19.0 | 19.5 | 18.7 | 19.9 | 19.2 | 20.4 | 21.0 |
| 3H | 18.9 | 20.0 | 19.4 | 20.5 | 21.1 | 21.5 | 22.5 | 22.0 | 23.1 | 23.7 |
| 4H | 19.6 | 20.6 | 20.1 | 21.1 | 21.7 | 23.0 | 24.0 | 23.6 | 24.6 | 25.2 |
| 6H | 20.0 | 20.9 | 20.6 | 21.5 | 22.2 | 24.8 | 25.7 | 25.4 | 26.2 | 26.9 |
| 8H | 20.2 | 21.0 | 20.8 | 21.6 | 22.3 | 25.7 | 26.6 | 26.3 | 27.2 | 27.8 |
| 12H | 20.2 | 21.0 | 20.9 | 21.6 | 22.3 | 26.8 | 27.6 | 27.5 | 28.2 | 28.9 |
| 8H 4H | 20.5 | 21.4 | 21.2 | 22.0 | 22.6 | 23.3 | 24.2 | 23.9 | 24.8 | 25.4 |
| 6H | 21.4 | 22.1 | 22.0 | 22.7 | 23.4 | 25.4 | 26.1 | 26.0 | 26.7 | 27.4 |
| 8H | 21.7 | 22.3 | 22.3 | 23.0 | 23.7 | 26.5 | 27.2 | 27.2 | 27.8 | 28.6 |
| 12H | 21.9 | 22.5 | 22.6 | 23.1 | 23.9 | 27.9 | 28.5 | 28.6 | 29.1 | 29.9 |
| 12H 4H | 20.8 | 21.6 | 21.5 | 22.2 | 22.9 | 23.3 | 24.1 | 24.0 | 24.7 | 25.4 |
| 6H | 21.9 | 22.5 | 22.6 | 23.2 | 23.9 | 25.5 | 26.1 | 26.1 | 26.7 | 27.5 |
| 8H | 22.4 | 23.0 | 23.1 | 23.6 | 24.4 | 26.8 | 27.3 | 27.4 | 28.0 | 28.7 |
| Variations with the observer position at spacings: | | | | | | | | | | |
| S = 1.0H | + 0.1 / - 0.2 | | | | | + 0.1 / - 0.1 | | | | |
| 1.5H | + 0.2 / - 0.3 | | | | | + 0.2 / - 0.3 | | | | |
| 2.0H | + 0.2 / - 0.4 | | | | | + 0.2 / - 0.3 | | | | |

CIE Pub.117 Corrected 1082 lm Total Lamp Luminous Flux.(8log(F/F0) = 0.3)

C Range: 0 - 360DEG
 C Interval: 22.5DEG
 Test Speed: HIGH
 Temperature:24.3DEG
 Operators:Carl
 Test Date:2022-12-09

γ Range: 0 - 180DEG
 γ Interval: 1.0DEG
 Test System:EVERFINE GO-R5000_V2 SYSTEM V2.0.351
 Humidity:48%
 Test Distance:2.532m [K=1.0000]
 Remarks:

UTILIZATION FACTORS TABLE

| | | |
|---|-----------|---------------------|
| Test:U:120.1V I:0.1339A P:15.43W PF:0.9598 Lamp Flux:1081.68x1 lm | | |
| NAME: LED Luminaires | TYPE:N/A | WEIGHT:N/A |
| SPEC.:N/A | DIM.: N/A | SERIAL No.:N/A |
| MFR.: RISING-SUN | SUR.:N/A | Shielding Angle:N/A |

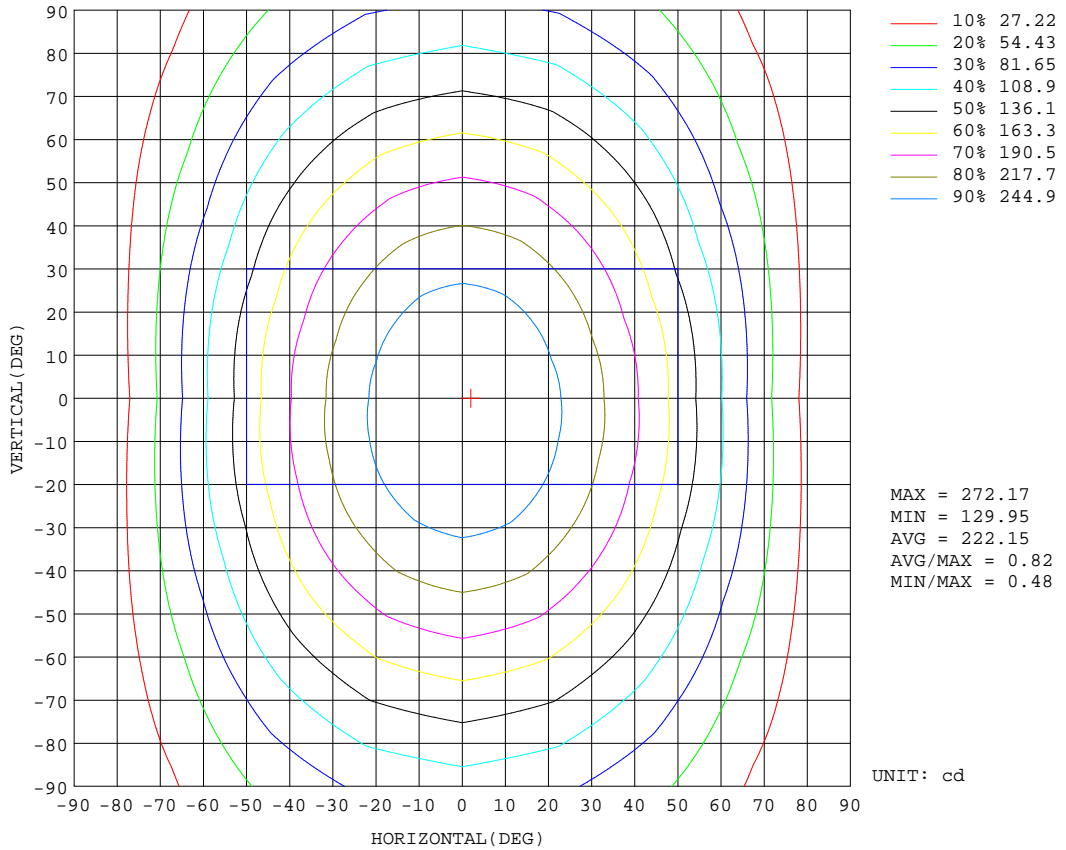
| REFLECTANCE | | | | | | | | | | |
|----------------------------------|---|-----|-----------|-----|-----|-----|---------------|-----|-----|--------|
| Ceiling | 0.8 | 0.8 | 0.8 | 0.7 | 0.7 | 0.7 | 0.5 | 0.5 | 0.5 | 0 |
| Walls | 0.7 | 0.5 | 0.3 | 0.7 | 0.5 | 0.3 | 0.7 | 0.5 | 0.3 | 0 |
| Working plane | 0.2 | 0.2 | 0.2 | 0.2 | 0.2 | 0.2 | 0.2 | 0.2 | 0.2 | 0 |
| ROOM INDEX | UTILIZATION FACTORS(PERCENT) $k(RI) \times RCR = 5$ | | | | | | | | | |
| k = 0.60 | 50 | 38 | 31 | 49 | 37 | 31 | 47 | 37 | 30 | 23 |
| 0.80 | 59 | 47 | 39 | 58 | 46 | 39 | 55 | 45 | 38 | 30 |
| 1.00 | 67 | 55 | 47 | 66 | 54 | 46 | 62 | 55 | 45 | 37 |
| 1.25 | 74 | 62 | 54 | 72 | 61 | 53 | 68 | 59 | 52 | 43 |
| 1.50 | 79 | 68 | 59 | 77 | 66 | 58 | 72 | 63 | 57 | 47 |
| 2.00 | 86 | 76 | 68 | 84 | 74 | 67 | 78 | 70 | 64 | 53 |
| 2.50 | 91 | 81 | 74 | 88 | 79 | 72 | 82 | 75 | 69 | 57 |
| 3.00 | 94 | 86 | 79 | 91 | 83 | 77 | 85 | 79 | 73 | 61 |
| 4.00 | 99 | 91 | 85 | 95 | 89 | 83 | 89 | 83 | 79 | 66 |
| 5.00 | 102 | 95 | 90 | 98 | 92 | 87 | 91 | 87 | 83 | 69 |
| ROOM INDEX | UF(total) | | | | | | | | | Direct |
| According to DIN EN 13032-2 2004 | | | Suspended | | | | SHRNOM = 1.25 | | | |

C Range: 0 - 360DEG
 C Interval: 22.5DEG
 Test Speed: HIGH
 Temperature:24.3DEG
 Operators:Carl
 Test Date:2022-12-09

γ Range: 0 - 180DEG
 γ Interval: 1.0DEG
 Test System:EVERFINE GO-R5000_V2 SYSTEM V2.0.351
 Humidity:48%
 Test Distance:2.532m [K=1.0000]
 Remarks:

ISOCANDELA DIAGRAM

| | | |
|---|-----------|---------------------|
| Test:U:120.1V I:0.1339A P:15.43W PF:0.9598 Lamp Flux:1081.68x1 lm | | |
| NAME: LED Luminaires | TYPE:N/A | WEIGHT:N/A |
| SPEC.:N/A | DIM.: N/A | SERIAL No.:N/A |
| MFR.: RISING-SUN | SUR.:N/A | Shielding Angle:N/A |

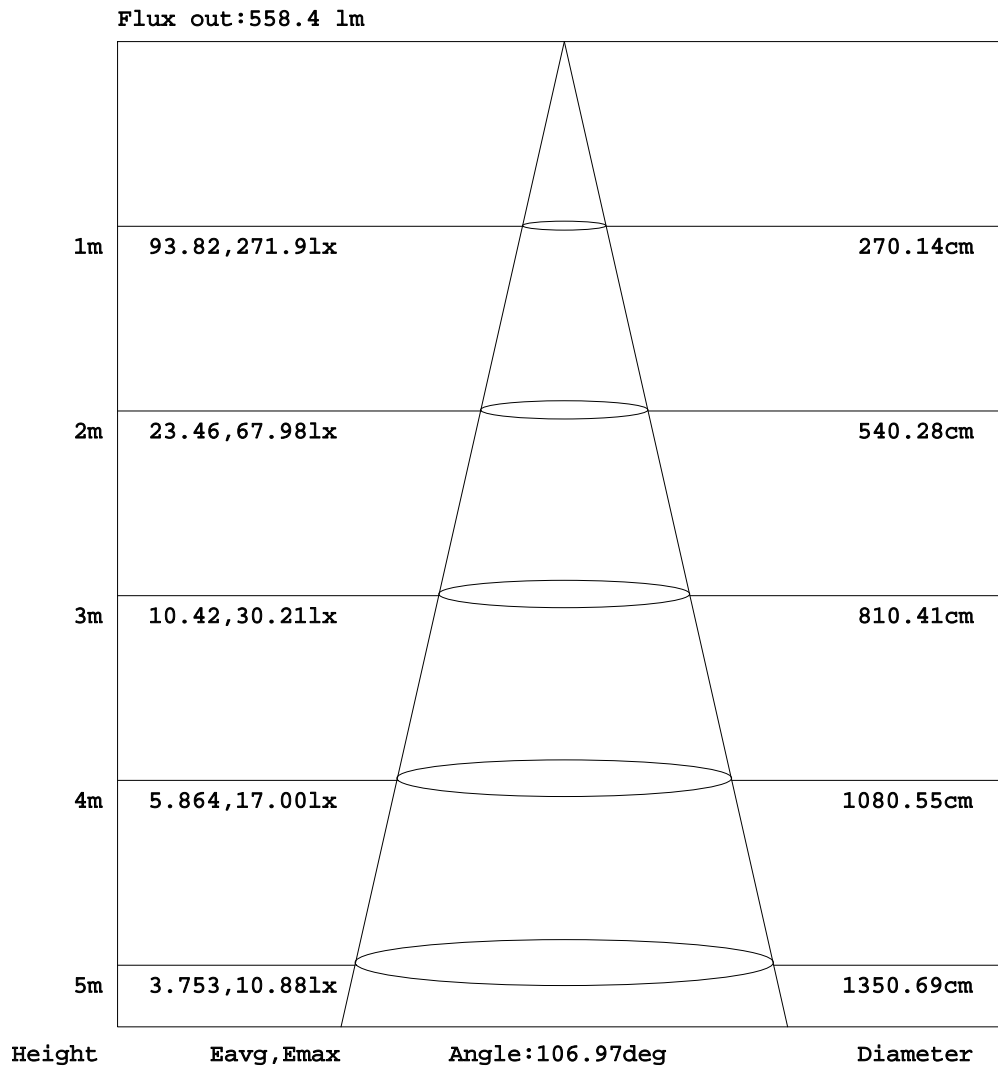


C Range: 0 - 360DEG
 C Interval: 22.5DEG
 Test Speed: HIGH
 Temperature:24.3DEG
 Operators:Carl
 Test Date:2022-12-09

γ Range: 0 - 180DEG
 γ Interval: 1.0DEG
 Test System:EVERFINE GO-R5000_V2 SYSTEM V2.0.351
 Humidity:48%
 Test Distance:2.532m [K=1.0000]
 Remarks:

AAI Figure

| | | |
|---|-----------|---------------------|
| Test:U:120.1V I:0.1339A P:15.43W PF:0.9598 Lamp Flux:1081.68x1 lm | | |
| NAME: LED Luminaires | TYPE:N/A | WEIGHT:N/A |
| SPEC.:N/A | DIM.: N/A | SERIAL No.:N/A |
| MFR.: RISING-SUN | SUR.:N/A | Shielding Angle:N/A |



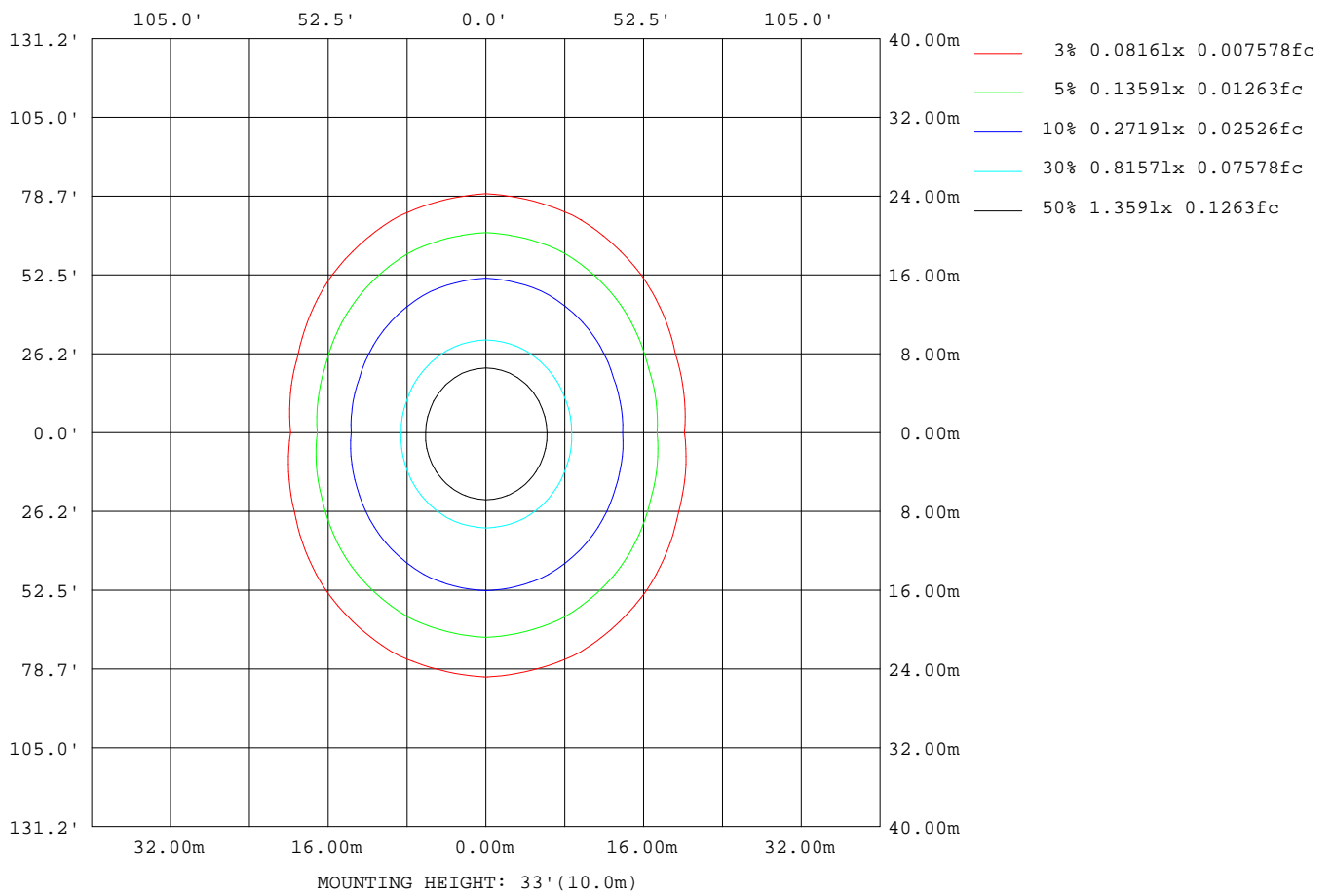
Note:The Curves indicate the illuminated area and the average illumination when the luminaire is at different distance.

C Range: 0 - 360DEG
 C Interval: 22.5DEG
 Test Speed: HIGH
 Temperature:24.3DEG
 Operators:Carl
 Test Date:2022-12-09

γ Range: 0 - 180DEG
 γ Interval: 1.0DEG
 Test System:EVERFINE GO-R5000_V2 SYSTEM V2.0.351
 Humidity:48%
 Test Distance:2.532m [K=1.0000]
 Remarks:

ISOLUX DIAGRAM

| | | |
|---|-----------|---------------------|
| Test:U:120.1V I:0.1339A P:15.43W PF:0.9598 Lamp Flux:1081.68x1 lm | | |
| NAME: LED Luminaires | TYPE:N/A | WEIGHT:N/A |
| SPEC.:N/A | DIM.: N/A | SERIAL No.:N/A |
| MFR.: RISING-SUN | SUR.:N/A | Shielding Angle:N/A |



C Range: 0 - 360DEG
 C Interval: 22.5DEG
 Test Speed: HIGH
 Temperature:24.3DEG
 Operators:Carl
 Test Date:2022-12-09

γ Range: 0 - 180DEG
 γ Interval: 1.0DEG
 Test System:EVERFINE GO-R5000_V2 SYSTEM V2.0.351
 Humidity:48%
 Test Distance:2.532m [K=1.0000]
 Remarks:

LED Avg.L Report

| | | |
|---|-----------|---------------------|
| Test:U:120.1V I:0.1339A P:15.43W PF:0.9598 Lamp Flux:1081.68x1 lm | | |
| NAME: LED Luminaires | TYPE:N/A | WEIGHT:N/A |
| SPEC.:N/A | DIM.: N/A | SERIAL No.:N/A |
| MFR.: RISING-SUN | SUR.:N/A | Shielding Angle:N/A |

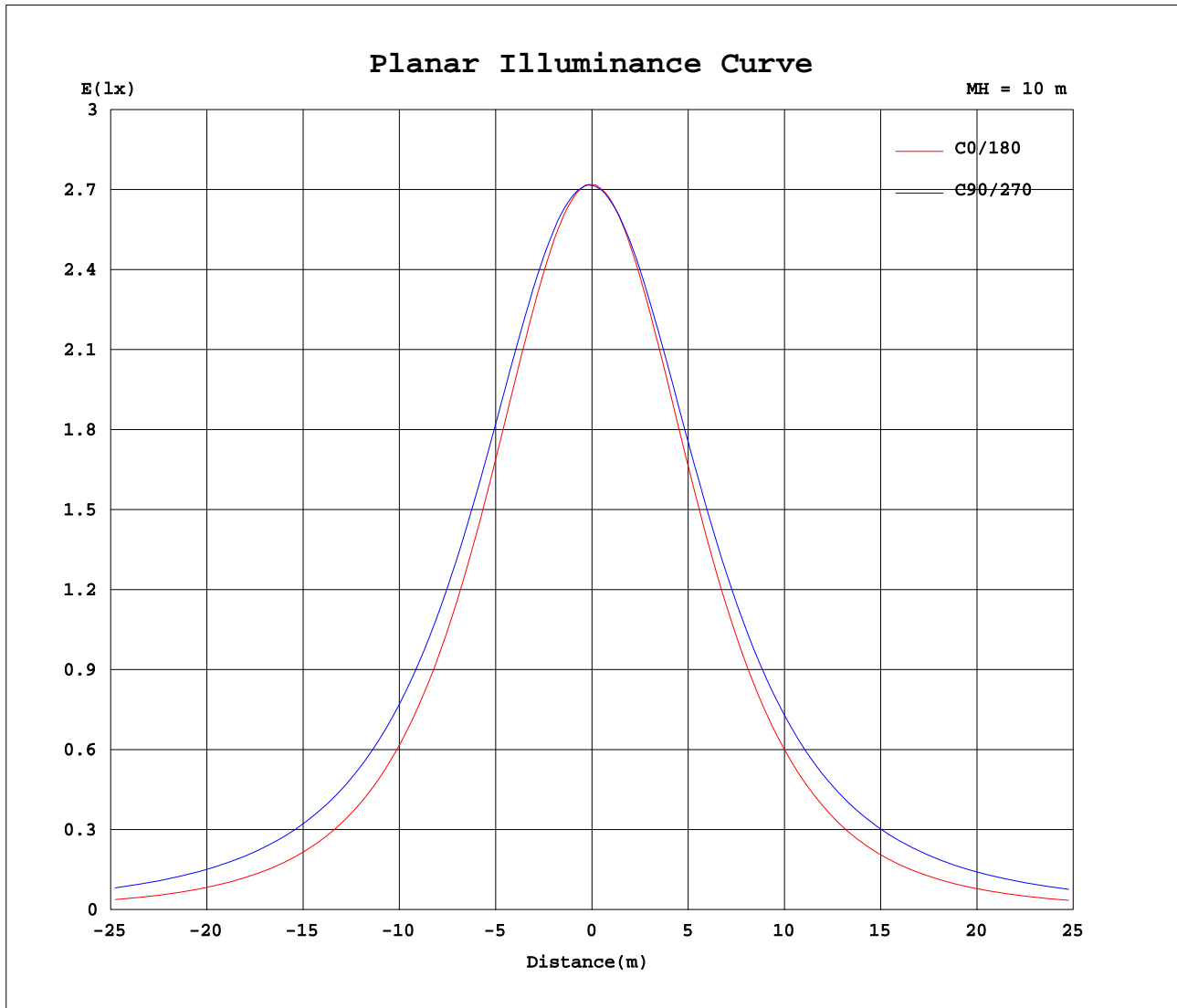
| AvgL | cd/m2 |
|----------------|-------|
| L_0~180(65)av | 3054 |
| L_0~180(75)av | 2253 |
| L_0~180(85)av | 854 |
| L_90~270(65)av | 5835 |
| L_90~270(75)av | 7866 |
| L_90~270(85)av | 18739 |
| L_45(65)av | 4650 |
| L_45(75)av | 5729 |
| L_45(85)av | 12248 |

Standard: GB/T 29293-2012

C Range: 0 - 360DEG
 C Interval: 22.5DEG
 Test Speed: HIGH
 Temperature:24.3DEG
 Operators:Carl
 Test Date:2022-12-09

γ Range: 0 - 180DEG
 γ Interval: 1.0DEG
 Test System:EVERFINE GO-R5000_V2 SYSTEM V2.0.351
 Humidity:48%
 Test Distance:2.532m [K=1.0000]
 Remarks:

Planar Illuminance Curve



C Range: 0 - 360DEG
 C Interval: 22.5DEG
 Test Speed: HIGH
 Temperature: 24.3DEG
 Operators: Carl
 Test Date: 2022-12-09

γ Range: 0 - 180DEG
 γ Interval: 1.0DEG
 Test System: EVERFINE GO-R5000_V2 SYSTEM V2.0.351
 Humidity: 48%
 Test Distance: 2.532m [K=1.0000]
 Remarks:

LUMINOUS DISTRIBUTION INTENSITY DATA

| | | |
|---|-----------|---------------------|
| Test:U:120.1V I:0.1339A P:15.43W PF:0.9598 Lamp Flux:1081.68x1 lm | | |
| NAME: LED Luminaires | TYPE:N/A | WEIGHT:N/A |
| SPEC.:N/A | DIM.: N/A | SERIAL No.:N/A |
| MFR.: RISING-SUN | SUR.:N/A | Shielding Angle:N/A |

Table--1

UNIT: cd

| C(DEG) γ (DEG) | 0 | 22.5 | 45 | 67.5 | 90 | 112.5 | 135 | 157.5 | 180 | 202.5 | 225 | 247.5 | 270 | 292.5 | 315 | 337.5 | | | |
|--------------------|------|------|------|------|------|-------|------|-------|------|-------|------|-------|------|-------|------|-------|--|--|--|
| 0 | 272 | 272 | 272 | 272 | 272 | 272 | 272 | 272 | 272 | 272 | 272 | 272 | 272 | 272 | 272 | 272 | | | |
| 5 | 271 | 271 | 272 | 272 | 272 | 272 | 271 | 271 | 270 | 270 | 270 | 270 | 270 | 270 | 270 | 270 | | | |
| 10 | 267 | 268 | 269 | 270 | 271 | 270 | 269 | 267 | 265 | 265 | 266 | 266 | 266 | 266 | 266 | 266 | | | |
| 15 | 260 | 262 | 265 | 267 | 268 | 266 | 264 | 261 | 258 | 258 | 259 | 261 | 262 | 261 | 260 | 259 | | | |
| 20 | 251 | 253 | 259 | 262 | 263 | 261 | 257 | 252 | 248 | 248 | 251 | 254 | 255 | 255 | 252 | 250 | | | |
| 25 | 240 | 243 | 249 | 255 | 257 | 254 | 248 | 241 | 236 | 237 | 241 | 246 | 248 | 246 | 243 | 239 | | | |
| 30 | 226 | 231 | 239 | 246 | 249 | 245 | 237 | 229 | 222 | 224 | 229 | 236 | 239 | 237 | 231 | 226 | | | |
| 35 | 211 | 216 | 226 | 236 | 240 | 235 | 225 | 214 | 207 | 209 | 216 | 225 | 229 | 226 | 219 | 211 | | | |
| 40 | 193 | 200 | 213 | 225 | 230 | 224 | 211 | 197 | 189 | 192 | 202 | 213 | 218 | 214 | 204 | 195 | | | |
| 45 | 174 | 182 | 198 | 212 | 218 | 211 | 196 | 180 | 169 | 174 | 187 | 200 | 206 | 201 | 189 | 177 | | | |
| 50 | 154 | 164 | 182 | 199 | 206 | 198 | 180 | 161 | 149 | 155 | 171 | 187 | 194 | 188 | 174 | 158 | | | |
| 55 | 132 | 144 | 166 | 185 | 192 | 184 | 164 | 141 | 126 | 134 | 155 | 173 | 181 | 174 | 157 | 138 | | | |
| 60 | 110 | 124 | 149 | 170 | 179 | 169 | 147 | 121 | 104 | 115 | 138 | 159 | 168 | 160 | 140 | 118 | | | |
| 65 | 86.1 | 103 | 132 | 155 | 165 | 155 | 131 | 101 | 80.8 | 94.7 | 122 | 144 | 154 | 146 | 124 | 97.9 | | | |
| 70 | 62.5 | 83.1 | 115 | 141 | 151 | 140 | 115 | 81.5 | 57.7 | 75.5 | 106 | 130 | 140 | 131 | 108 | 78.4 | | | |
| 75 | 39.7 | 64.5 | 99.9 | 127 | 137 | 126 | 99.1 | 63.3 | 35.6 | 57.9 | 91.2 | 116 | 126 | 117 | 93.1 | 60.4 | | | |
| 80 | 19.7 | 47.5 | 85.5 | 113 | 123 | 112 | 85.0 | 47.0 | 16.9 | 42.4 | 77.5 | 103 | 113 | 104 | 79.2 | 44.5 | | | |
| 85 | 5.97 | 33.9 | 72.1 | 99.7 | 110 | 99.6 | 72.0 | 33.9 | 3.66 | 30.0 | 65.2 | 91.1 | 101 | 91.7 | 66.6 | 31.5 | | | |
| 90 | 0.09 | 23.8 | 60.3 | 87.4 | 97.6 | 87.4 | 60.4 | 24.2 | 0.05 | 20.9 | 54.4 | 79.5 | 89.2 | 80.1 | 55.5 | 21.8 | | | |
| 95 | 0.18 | 16.8 | 50.2 | 76.1 | 85.9 | 76.2 | 50.6 | 17.6 | 0.20 | 15.1 | 45.4 | 69.2 | 78.4 | 69.6 | 46.2 | 15.6 | | | |
| 100 | 0.56 | 12.4 | 41.7 | 66.0 | 75.2 | 66.1 | 42.3 | 13.4 | 0.65 | 11.5 | 37.9 | 59.9 | 68.4 | 60.1 | 38.4 | 11.6 | | | |
| 105 | 1.29 | 9.92 | 34.7 | 56.4 | 65.3 | 56.6 | 35.4 | 10.8 | 1.45 | 9.46 | 31.6 | 51.4 | 59.3 | 51.7 | 32.0 | 9.43 | | | |
| 110 | 2.23 | 8.56 | 29.0 | 48.1 | 55.8 | 48.5 | 29.6 | 9.29 | 2.32 | 8.34 | 26.6 | 44.0 | 51.0 | 44.1 | 26.8 | 8.32 | | | |
| 115 | 3.19 | 7.88 | 24.4 | 40.9 | 47.7 | 41.2 | 25.0 | 8.42 | 3.22 | 7.81 | 22.6 | 37.5 | 43.6 | 37.6 | 22.7 | 7.87 | | | |
| 120 | 4.15 | 7.55 | 20.6 | 34.6 | 40.4 | 34.9 | 21.2 | 8.00 | 4.14 | 7.59 | 19.4 | 31.9 | 37.1 | 32.0 | 19.5 | 7.72 | | | |
| 125 | 5.15 | 7.47 | 17.7 | 29.2 | 34.1 | 29.5 | 18.2 | 7.87 | 5.07 | 7.57 | 16.8 | 27.2 | 31.5 | 27.2 | 16.9 | 7.74 | | | |
| 130 | 6.10 | 7.52 | 15.5 | 24.6 | 28.6 | 24.8 | 15.8 | 7.92 | 5.98 | 7.68 | 14.8 | 23.0 | 26.7 | 23.1 | 15.0 | 7.85 | | | |
| 135 | 7.04 | 7.66 | 13.7 | 20.8 | 23.9 | 20.9 | 14.0 | 7.95 | 6.85 | 7.87 | 13.2 | 19.5 | 22.5 | 19.8 | 13.6 | 8.08 | | | |
| 140 | 7.97 | 8.14 | 12.3 | 17.6 | 20.0 | 17.7 | 12.6 | 8.12 | 7.67 | 8.13 | 11.8 | 16.6 | 19.0 | 17.1 | 12.6 | 8.34 | | | |
| 145 | 8.72 | 8.44 | 11.4 | 15.2 | 16.9 | 15.2 | 11.6 | 8.58 | 8.45 | 8.31 | 10.7 | 14.2 | 16.2 | 15.0 | 11.8 | 8.69 | | | |
| 150 | 9.43 | 8.97 | 10.7 | 13.3 | 14.5 | 13.4 | 10.9 | 9.17 | 9.16 | 8.88 | 10.0 | 12.1 | 13.8 | 13.3 | 11.2 | 8.98 | | | |
| 155 | 10.1 | 9.55 | 10.4 | 12.0 | 12.7 | 12.0 | 10.2 | 9.65 | 9.50 | 9.54 | 9.52 | 10.9 | 12.0 | 12.0 | 10.9 | 9.25 | | | |
| 160 | 10.6 | 9.46 | 10.2 | 11.0 | 11.4 | 11.0 | 10.0 | 9.96 | 9.88 | 10.3 | 9.45 | 10.3 | 11.0 | 11.1 | 10.5 | 9.63 | | | |
| 165 | 10.8 | 9.79 | 10.2 | 10.6 | 10.7 | 10.6 | 10.3 | 10.3 | 10.2 | 10.5 | 9.39 | 10.1 | 10.5 | 10.5 | 10.1 | 9.82 | | | |
| 170 | 9.69 | 9.84 | 9.49 | 9.95 | 10.5 | 9.94 | 9.81 | 9.24 | 7.93 | 8.07 | 9.20 | 9.15 | 9.92 | 10.4 | 9.98 | 9.71 | | | |
| 175 | 6.94 | 7.02 | 8.20 | 7.88 | 7.67 | 8.19 | 6.63 | 6.04 | 5.25 | 5.30 | 6.05 | 6.80 | 8.11 | 8.20 | 8.59 | 8.82 | | | |
| 180 | 4.35 | 4.18 | 2.99 | 1.66 | 0.00 | 1.52 | 3.03 | 3.68 | 4.71 | 4.71 | 4.09 | 3.50 | 2.50 | 0.57 | 2.49 | 3.48 | | | |

C Range: 0 - 360DEG
 C Interval: 22.5DEG
 Test Speed: HIGH
 Temperature:24.3DEG
 Operators:Carl
 Test Date:2022-12-09

γ Range: 0 - 180DEG
 γ Interval: 1.0DEG
 Test System:EVERFINE GO-R5000_V2 SYSTEM V2.0.351
 Humidity:48%
 Test Distance:2.532m [K=1.0000]
 Remarks: