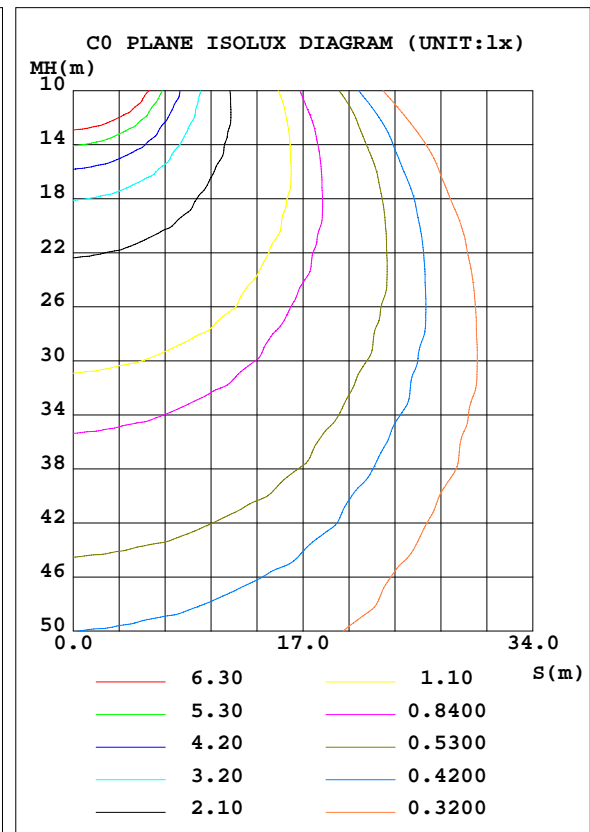
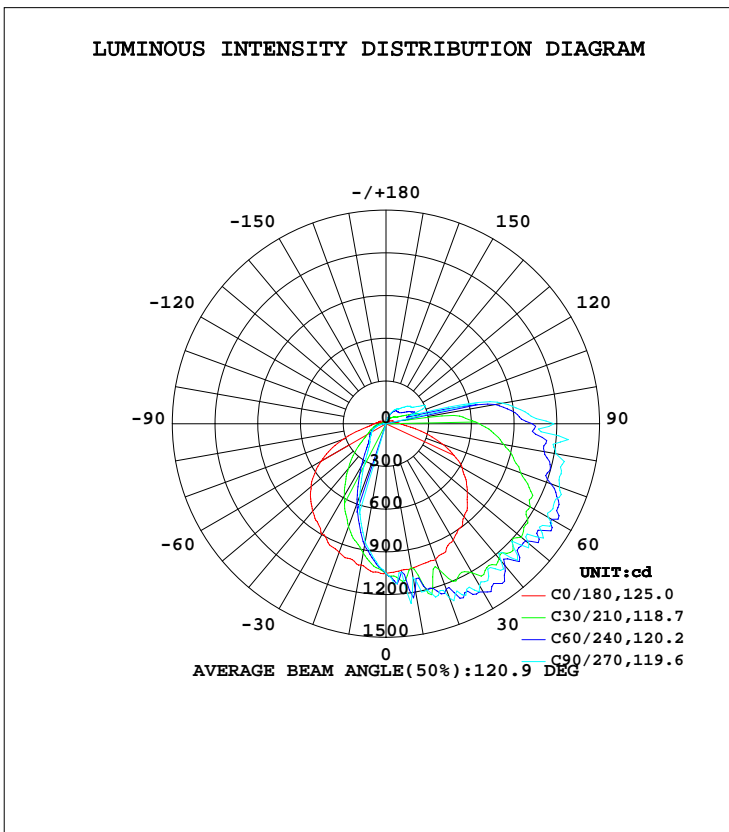


LUMINAIRE PHOTOMETRIC TEST REPORT

Test:U:120.00V I:0.2515A P:30.070W PF:0.9965 Freq:60.00Hz Lamp Flux:4890.29x1 lm		
NAME: ASD Lighting Corp	TYPE: LED	WEIGHT:
SPEC.: ASD-WLP01S-30DAC_4000K	DIM.:	SERIAL No.:
MFR.: ASD Lighting Corp	SUR.:	Shielding Angle:

DATA OF LAMP		PHOTOMETRIC DATA Eff: 162.63 lm/W			
MODEL	ASD-WLP01S-30DAC	I _{max} (cd)	1400	S/MH(C0/180)	1.26
NOMINAL POWER(W)	30	LOR(%)	100.0	S/MH(C90/270)	0.65
RATED VOLTAGE(V)	120-277	TOTAL FLUX(lm)	4890.3	η UP, DN(C0-180)	13.9,68.6
NOMINAL FLUX(lm)	4890.29	CIE CLASS	SEMI-D.	η UP, DN(C180-360)	0.7,16.8
LAMPS INSIDE	1	η up(%)	14.6	CIBSE SHR NOM	1.25
TEST VOLTAGE(V)	120	η down(%)	85.4	CIBSE SHR MAX	1.35



C Range: 0 - 360DEG
 C Interval: 15.0DEG
 Test Speed: HIGH
 Temperature: 25.1DEG
 Operators: Alan Wang
 Test Date: 09 August 2021

γ Range: 0 - 180DEG
 γ Interval: 1.0DEG
 Test System: EVERFINE GO-R5000_V2 SYSTEM V2.00.416
 Humidity: 45.5%
 Test Distance: 2.500m [K=1.0473]
 Remarks:

ZONAL FLUX DIAGRAM

ZONAL FLUX DIAGRAM:

γ	C0	C45	C90	C135	C180	C225	C270	C315	γ	Φ zone	Φ total	%lum,lamp
10	1032	1201	1095	1138	1007	885.3	841.5	885.2	0- 10	98.15	98.15	2.01,2.01
20	1016	1199	1300	1164	962.1	669.1	539.1	694.5	10- 20	275.5	373.7	7.64,7.64
30	944.0	1345	1315	1298	897.1	451.3	284.0	503.0	20- 30	418.5	792.1	16.2,16.2
40	857.8	1293	1257	1298	802.4	279.1	177.4	320.7	30- 40	518.1	1310	26.8,26.8
50	746.2	1186	1308	1273	686.4	168.5	143.3	189.5	40- 50	579.1	1889	38.6,38.6
60	618.4	1229	1315	1258	525.9	128.1	116.6	129.1	50- 60	626.9	2516	51.5,51.5
70	426.6	1158	1295	1122	320.6	97.02	81.86	99.91	60- 70	625.7	3142	64.2,64.2
80	211.9	991.2	1209	979.1	135.3	55.23	39.72	63.81	70- 80	559.3	3701	75.7,75.7
90	104.0	851.2	1180	820.5	83.52	22.39	1.719	31.09	80- 90	472.8	4174	85.4,85.4
100	43.27	573.2	832.6	469.8	40.03	14.83	2.173	21.81	90-100	354.8	4529	92.6,92.6
110	54.09	232.0	196.2	220.2	49.51	7.137	3.326	11.65	100-110	149.1	4678	95.7,95.7
120	42.55	127.4	239.4	123.0	37.50	6.284	3.220	10.04	110-120	86.62	4765	97.4,97.4
130	10.17	91.27	191.9	88.42	6.312	2.930	2.829	5.271	120-130	54.94	4820	98.6,98.6
140	13.00	80.44	136.1	72.04	9.709	1.776	2.267	2.068	130-140	35.50	4855	99.3,99.3
150	2.767	67.18	107.7	52.72	2.529	1.848	1.634	2.019	140-150	22.46	4877	99.7,99.7
160	2.196	15.35	61.07	15.13	1.806	1.852	1.825	1.999	150-160	10.39	4888	100,100
170	1.605	2.824	13.94	4.220	2.534	2.099	1.239	1.440	160-170	2.187	4890	100,100
180	2.427	2.427	2.427	2.427	2.156	2.156	2.156	2.156	170-180	0.2384	4890	100,100
DEG	LUMINOUS INTENSITY:cd									UNIT:lm		

Conical surface Flux(90deg): 1592.9 lm

%lum = 32.6%

%lamp = 32.6%

Conical surface Flux(120deg): 2516.3 lm

%lum = 51.5%

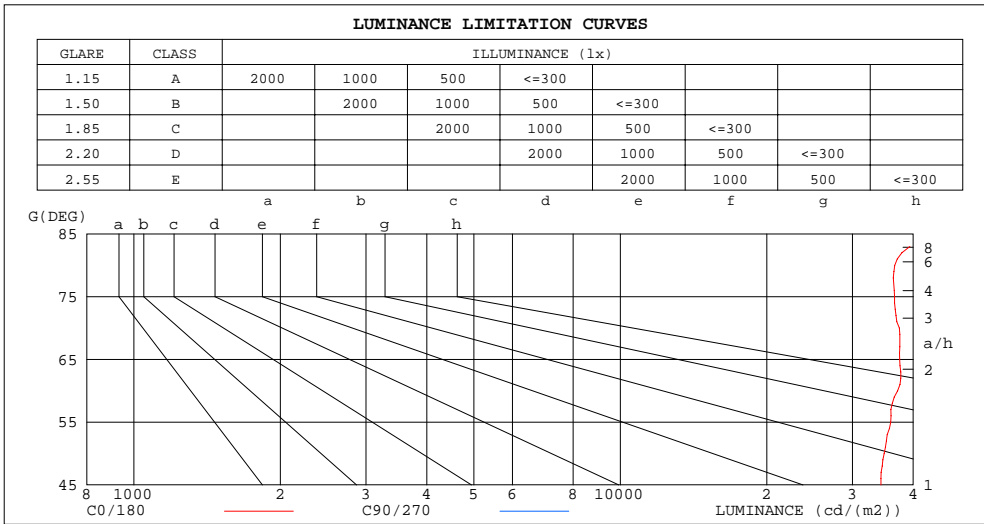
%lamp = 51.5%

C Range: 0 - 360DEG
 C Interval: 15.0DEG
 Test Speed: HIGH
 Temperature: 25.1DEG
 Operators: Alan Wang
 Test Date: 09 August 2021

γ Range: 0 - 180DEG
 γ Interval: 1.0DEG
 Test System: EVERFINE GO-R5000_V2 SYSTEM V2.00.416
 Humidity: 45.5%
 Test Distance: 2.500m [K=1.0473]
 Remarks:

LUMINANCE LIMITATION CURVES

Test:U:120.00V I:0.2515A P:30.070W PF:0.9965 Freq:60.00Hz Lamp Flux:4890.29x1 lm		
NAME: ASD Lighting Corp	TYPE: LED	WEIGHT:
SPEC.:	DIM.:	SERIAL No.:
MFR.: ASD Lighting Corp	SUR.:	Shielding Angle:



LUMINANCE cd/(m2)		
G (DEG)	C0/180	C90/270
85	45986	442549
80	36651	209165
75	36619	147992
70	37453	113726
65	37511	92740
60	37142	78980
55	35954	70122
50	34863	61131
45	34334	55461

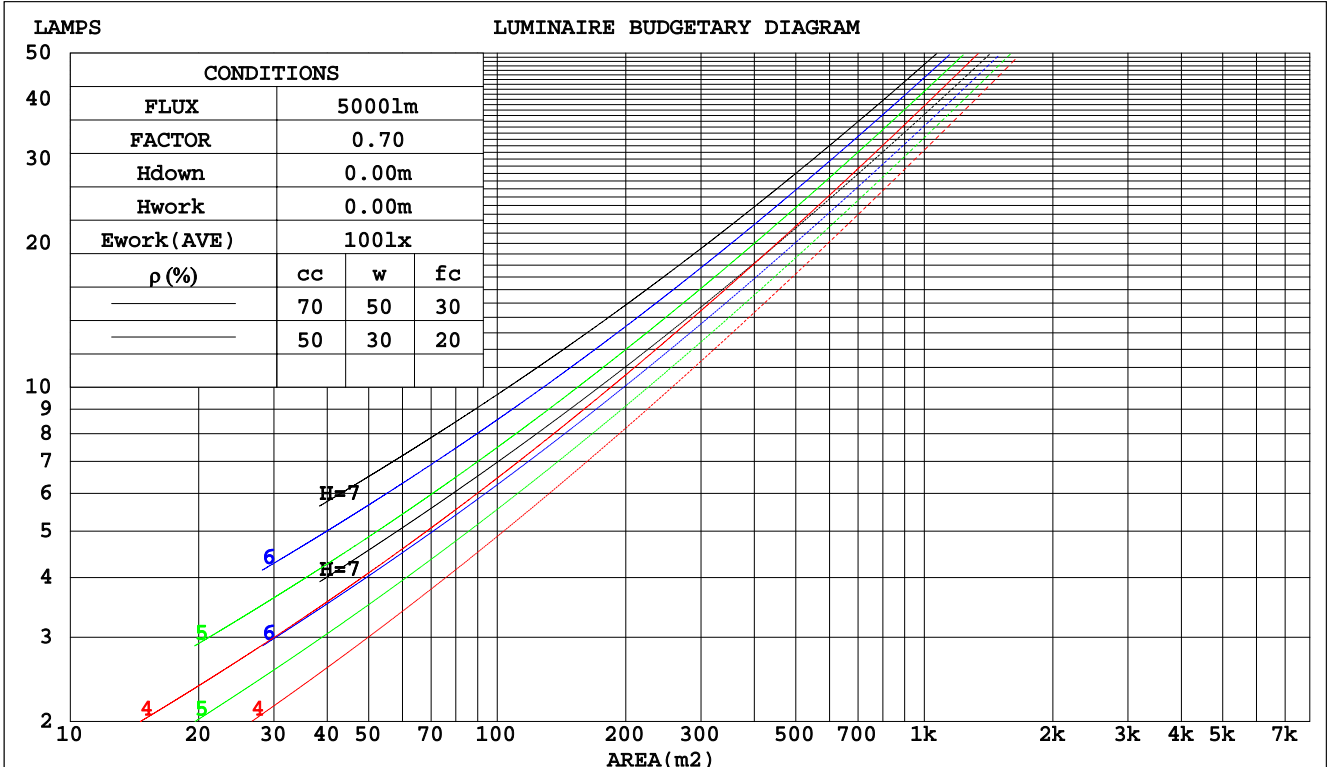
C Range: 0 - 360DEG
 C Interval: 15.0DEG
 Test Speed: HIGH
 Temperature: 25.1DEG
 Operators: Alan Wang
 Test Date: 09 August 2021

γ Range: 0 - 180DEG
 γ Interval: 1.0DEG
 Test System: EVERFINE GO-R5000_V2 SYSTEM V2.00.416
 Humidity: 45.5%
 Test Distance: 2.500m [K=1.0473]
 Remarks:

CU AND LUMINAIRE BUDGETARY ESTIMATE DIAGRAM

Test:U:120.00V I:0.2515A P:30.070W PF:0.9965 Freq:60.00Hz Lamp Flux:4890.29x1 lm		
NAME: ASD Lighting Corp	TYPE: LED	WEIGHT:
SPEC.:	DIM.:	SERIAL No.:
MFR.: ASD Lighting Corp	SUR.:	Shielding Angle:

pcc	80%			70%			50%			30%			10%			0
	50%	30%	10%	50%	30%	10%	50%	30%	10%	50%	30%	10%	50%	30%	10%	0
pw																
pfc	20%			20%			20%			20%			20%			0
RCR	RCR:Room Cavity Ratio						Coefficients of Utilization(CU)									
0.0	1.16	1.16	1.16	1.11	1.11	1.11	1.03	1.03	1.03	.95	.95	.95	.89	.89	.89	.85
1.0	.95	.89	.83	.91	.85	.81	.84	.79	.75	.77	.74	.70	.71	.68	.66	.62
2.0	.80	.72	.65	.77	.69	.63	.71	.65	.59	.65	.60	.55	.60	.56	.52	.49
3.0	.69	.60	.52	.66	.58	.51	.61	.54	.48	.56	.50	.45	.52	.47	.42	.39
4.0	.60	.51	.43	.58	.49	.42	.54	.46	.40	.49	.43	.38	.46	.40	.35	.33
5.0	.54	.44	.36	.52	.42	.35	.48	.40	.34	.44	.37	.32	.41	.35	.30	.28
6.0	.48	.38	.31	.46	.37	.31	.43	.35	.29	.40	.33	.28	.37	.31	.26	.24
7.0	.43	.34	.27	.42	.33	.27	.39	.31	.25	.36	.29	.24	.33	.28	.23	.21
8.0	.39	.30	.24	.38	.29	.24	.35	.28	.23	.33	.26	.21	.31	.25	.20	.18
9.0	.36	.27	.21	.35	.27	.21	.32	.25	.20	.30	.24	.19	.28	.23	.18	.16
10.0	.33	.25	.19	.32	.24	.19	.30	.23	.18	.28	.22	.17	.26	.21	.17	.15



C Range: 0 - 360DEG
 C Interval: 15.0DEG
 Test Speed: HIGH
 Temperature: 25.1DEG
 Operators: Alan Wang
 Test Date: 09 August 2021

γ Range: 0 - 180DEG
 γ Interval: 1.0DEG
 Test System: EVERFINE GO-R5000_V2 SYSTEM V2.00.416
 Humidity: 45.5%
 Test Distance: 2.500m [K=1.0473]
 Remarks:

WEC AND CCEC

Test:U:120.00V I:0.2515A P:30.070W PF:0.9965 Freq:60.00Hz Lamp Flux:4890.29x1 lm		
NAME: ASD Lighting Corp	TYPE: LED	WEIGHT:
SPEC.:	DIM.:	SERIAL No.:
MFR.: ASD Lighting Corp	SUR.:	Shielding Angle:

ρcc	80%			70%			50%			30%			10%			0
ρw	50%	30%	10%	50%	30%	10%	50%	30%	10%	50%	30%	10%	50%	30%	10%	0
ρfc	20%			20%			20%			20%			20%			0
RCR	RCR:Room Cavity Ratio						Wall Exitance Coefficients(WEC)									
0.0																
1.0	.420	.239	.076	.409	.233	.074	.387	.222	.071	.366	.211	.068	.347	.201	.065	
2.0	.356	.195	.060	.346	.190	.059	.326	.181	.056	.307	.172	.054	.290	.164	.052	
3.0	.313	.166	.050	.303	.162	.049	.285	.154	.047	.268	.147	.045	.253	.140	.043	
4.0	.279	.145	.043	.270	.141	.042	.254	.135	.040	.239	.128	.039	.225	.122	.037	
5.0	.252	.128	.037	.244	.125	.037	.229	.119	.035	.216	.114	.034	.203	.108	.033	
6.0	.230	.115	.033	.223	.112	.032	.209	.107	.031	.197	.102	.030	.185	.097	.029	
7.0	.211	.104	.030	.205	.102	.029	.192	.097	.028	.181	.093	.027	.170	.088	.026	
8.0	.195	.095	.027	.189	.093	.026	.178	.089	.025	.168	.085	.024	.158	.081	.024	
9.0	.181	.088	.024	.176	.086	.024	.166	.082	.023	.156	.078	.022	.147	.075	.022	
10.0	.169	.081	.023	.164	.079	.022	.155	.076	.021	.146	.073	.021	.138	.069	.020	

ρcc	80%			70%			50%			30%			10%			0
ρw	50%	30%	10%	50%	30%	10%	50%	30%	10%	50%	30%	10%	50%	30%	10%	0
ρfc	20%			20%			20%			20%			20%			0
RCR	RCR:Room Cavity Ratio						Ceiling Cavity Exitance Coefficients(CCEC)									
0.0	.302	.302	.302	.258	.258	.258	.176	.176	.176	.101	.101	.101	.032	.032	.032	
1.0	.300	.268	.238	.257	.230	.205	.176	.158	.142	.101	.091	.082	.032	.029	.027	
2.0	.294	.245	.203	.252	.211	.176	.173	.146	.123	.100	.085	.072	.032	.027	.023	
3.0	.287	.228	.182	.246	.197	.158	.169	.137	.111	.097	.080	.065	.031	.026	.021	
4.0	.279	.216	.168	.239	.187	.146	.164	.130	.103	.095	.076	.061	.031	.025	.020	
5.0	.271	.206	.159	.232	.178	.138	.160	.125	.098	.093	.073	.058	.030	.024	.019	
6.0	.263	.198	.152	.226	.172	.132	.156	.120	.094	.090	.071	.056	.029	.023	.018	
7.0	.255	.192	.147	.220	.166	.128	.152	.116	.091	.088	.069	.054	.028	.022	.018	
8.0	.248	.186	.143	.214	.161	.125	.148	.113	.089	.086	.067	.053	.028	.022	.017	
9.0	.242	.181	.140	.208	.157	.122	.144	.111	.087	.084	.065	.052	.027	.021	.017	
10.0	.236	.177	.138	.203	.154	.120	.141	.108	.085	.082	.064	.051	.027	.021	.017	

C Range: 0 - 360DEG
 C Interval: 15.0DEG
 Test Speed: HIGH
 Temperature: 25.1DEG
 Operators: Alan Wang
 Test Date: 09 August 2021

γ Range: 0 - 180DEG
 γ Interval: 1.0DEG
 Test System: EVERFINE GO-R5000_V2 SYSTEM V2.00.416
 Humidity: 45.5%
 Test Distance: 2.500m [K=1.0473]
 Remarks:

UGR(Unified Glare Rating) Table

Test:U:120.00V I:0.2515A P:30.070W PF:0.9965 Freq:60.00Hz Lamp Flux:4890.29x1 lm										
NAME: ASD Lighting Corp					TYPE: LED			WEIGHT:		
SPEC.:					DIM.:			SERIAL No.:		
MFR.: ASD Lighting Corp					SUR.:			Shielding Angle:		
ceiling/cavity	0.7	0.7	0.5	0.5	0.3	0.7	0.7	0.5	0.5	0.3
walls	0.5	0.3	0.5	0.3	0.3	0.5	0.3	0.5	0.3	0.3
working plane	0.2	0.2	0.2	0.2	0.2	0.2	0.2	0.2	0.2	0.2
Room dimensions	Viewed crosswise					Viewed endwise				
x = 2H y = 2H	26.2	27.7	26.7	28.2	28.9	28.4	29.9	29.0	30.5	31.1
3H	28.4	29.8	29.0	30.4	31.1	31.9	33.3	32.5	33.8	34.5
4H	29.3	30.6	29.9	31.2	31.9	33.7	35.0	34.3	35.6	36.3
6H	30.0	31.3	30.6	31.9	32.6	35.6	36.8	36.2	37.5	38.2
8H	30.3	31.5	30.9	32.1	32.8	36.6	37.8	37.3	38.4	39.2
12H	30.5	31.7	31.2	32.3	33.1	37.9	39.1	38.6	39.7	40.4
4H 2H	27.8	29.1	28.4	29.7	30.4	29.3	30.6	29.9	31.2	31.9
3H	30.5	31.7	31.1	32.3	33.0	32.9	34.1	33.6	34.7	35.4
4H	31.8	32.8	32.4	33.5	34.2	34.9	36.0	35.6	36.6	37.4
6H	32.8	33.7	33.4	34.4	35.1	37.1	38.1	37.8	38.7	39.5
8H	33.2	34.1	33.8	34.7	35.5	38.3	39.1	38.9	39.8	40.6
12H	33.5	34.3	34.2	35.0	35.8	39.7	40.5	40.4	41.2	42.0
8H 4H	33.1	34.0	33.8	34.7	35.5	35.5	36.4	36.1	37.0	37.8
6H	34.7	35.4	35.4	36.2	36.9	37.9	38.7	38.6	39.4	40.2
8H	35.4	36.1	36.1	36.8	37.6	39.3	40.0	40.0	40.7	41.5
12H	36.0	36.6	36.7	37.3	38.2	41.1	41.7	41.8	42.4	43.2
12H 4H	33.6	34.4	34.2	35.1	35.9	35.6	36.4	36.3	37.1	37.9
6H	35.4	36.1	36.1	36.7	37.6	38.2	38.9	38.9	39.5	40.4
8H	36.3	36.9	37.0	37.6	38.5	39.7	40.3	40.4	41.0	41.8
CIE190: 2010										

CIE190: 2010
Area: 0.0333 m2

C Range: 0 - 360DEG
C Interval: 15.0DEG
Test Speed: HIGH
Temperature: 25.1DEG
Operators: Alan Wang
Test Date: 09 August 2021

γ Range: 0 - 180DEG
γ Interval: 1.0DEG
Test System: EVERFINE GO-R5000_V2 SYSTEM V2.00.416
Humidity: 45.5%
Test Distance: 2.500m [K=1.0473]
Remarks:

UTILIZATION FACTORS TABLE

Test:U:120.00V I:0.2515A P:30.070W PF:0.9965 Freq:60.00Hz Lamp Flux:4890.29x1 lm		
NAME: ASD Lighting Corp	TYPE: LED	WEIGHT:
SPEC.:	DIM.:	SERIAL No.:
MFR.: ASD Lighting Corp	SUR.:	Shielding Angle:

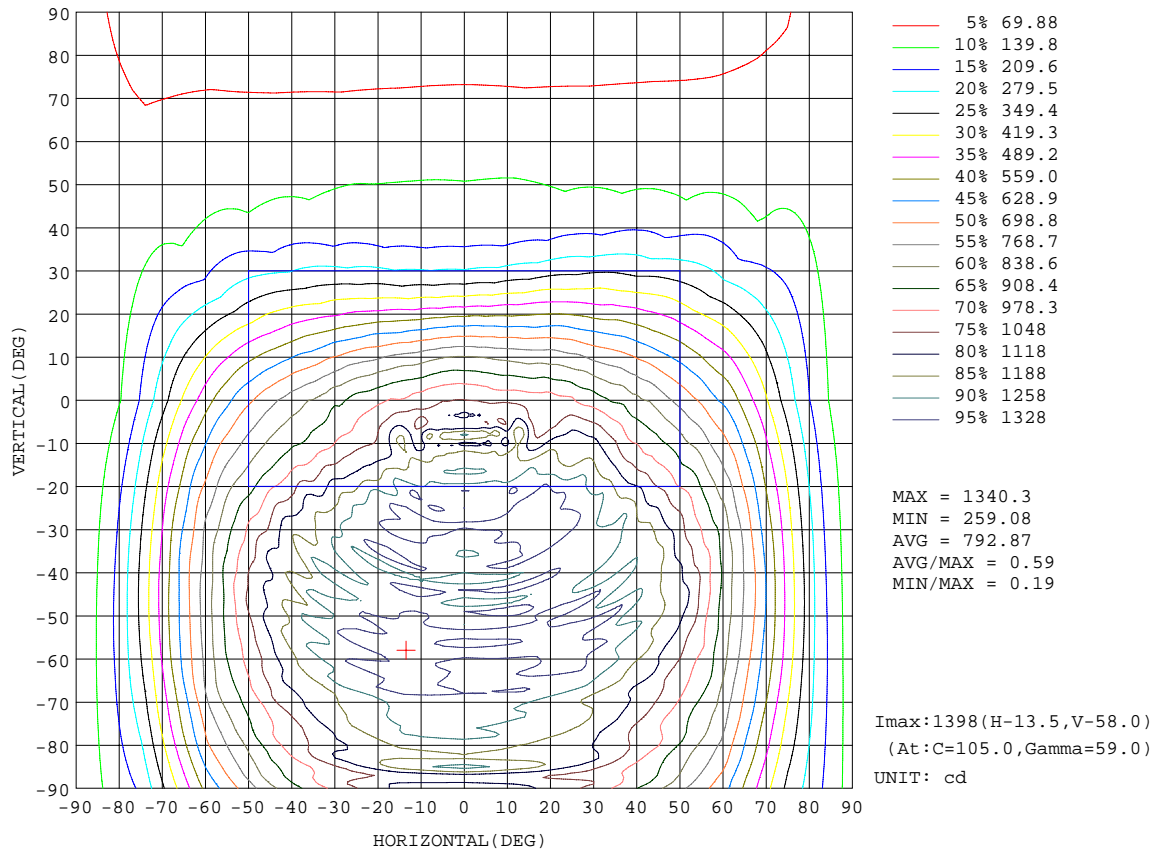
REFLECTANCE										
Ceiling	0.8	0.8	0.8	0.7	0.7	0.7	0.5	0.5	0.5	0
Walls	0.7	0.5	0.3	0.7	0.5	0.3	0.7	0.5	0.3	0
Working plane	0.2	0.2	0.2	0.2	0.2	0.2	0.2	0.2	0.2	0
ROOM INDEX	UTILIZATION FACTORS(PERCENT) $k(RI) \times RCR = 5$									
k = 0.60	47	34	27	46	34	27	44	33	26	19
0.80	56	42	34	54	42	34	52	41	33	25
1.00	63	50	41	62	49	41	58	50	40	31
1.25	70	57	48	68	56	47	64	54	46	37
1.50	75	62	53	73	61	53	68	58	51	41
2.00	83	71	62	80	69	61	75	66	59	47
2.50	87	76	68	84	74	66	79	70	64	52
3.00	91	81	73	88	79	71	82	74	68	55
4.00	96	88	80	93	85	78	86	80	74	61
5.00	99	92	85	96	89	83	89	83	78	64
ROOM INDEX	UF(total)									Direct
According to DIN EN 13032-2 2004			Suspended				SHRNOM = 1.25			

C Range: 0 - 360DEG
 C Interval: 15.0DEG
 Test Speed: HIGH
 Temperature: 25.1DEG
 Operators: Alan Wang
 Test Date: 09 August 2021

γ Range: 0 - 180DEG
 γ Interval: 1.0DEG
 Test System: EVERFINE GO-R5000_V2 SYSTEM V2.00.416
 Humidity: 45.5%
 Test Distance: 2.500m [K=1.0473]
 Remarks:

ISOCANDELA DIAGRAM

Test:U:120.00V I:0.2515A P:30.070W PF:0.9965 Freq:60.00Hz Lamp Flux:4890.29x1 lm		
NAME: ASD Lighting Corp	TYPE: LED	WEIGHT:
SPEC.:	DIM.:	SERIAL No.:
MFR.: ASD Lighting Corp	SUR.:	Shielding Angle:

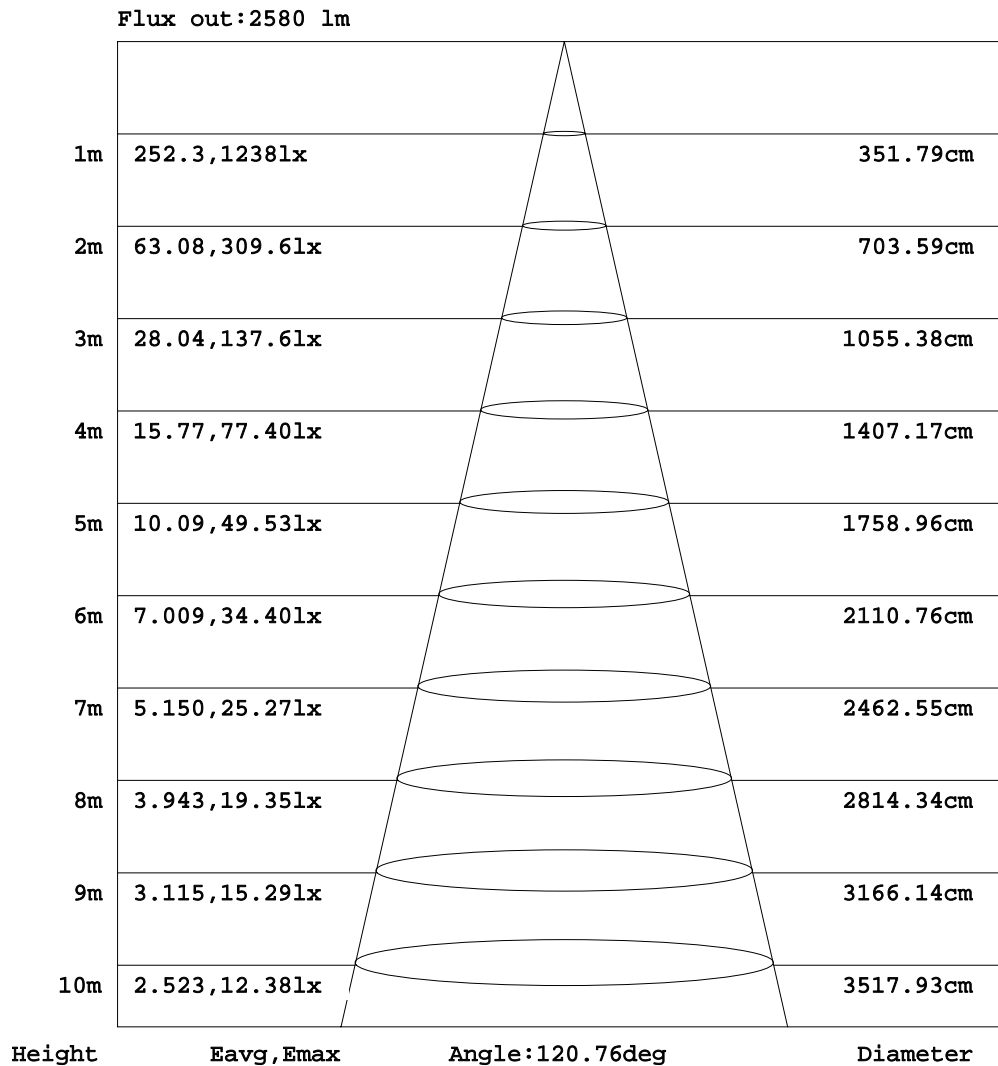


C Range: 0 - 360DEG
 C Interval: 15.0DEG
 Test Speed: HIGH
 Temperature: 25.1DEG
 Operators: Alan Wang
 Test Date: 09 August 2021

γ Range: 0 - 180DEG
 γ Interval: 1.0DEG
 Test System: EVERFINE GO-R5000_V2 SYSTEM V2.00.416
 Humidity: 45.5%
 Test Distance: 2.500m [K=1.0473]
 Remarks:

AAI Figure

Test:U:120.00V I:0.2515A P:30.070W PF:0.9965 Freq:60.00Hz Lamp Flux:4890.29x1 lm		
NAME: ASD Lighting Corp	TYPE: LED	WEIGHT:
SPEC.:	DIM.:	SERIAL No.:
MFR.: ASD Lighting Corp	SUR.:	Shielding Angle:



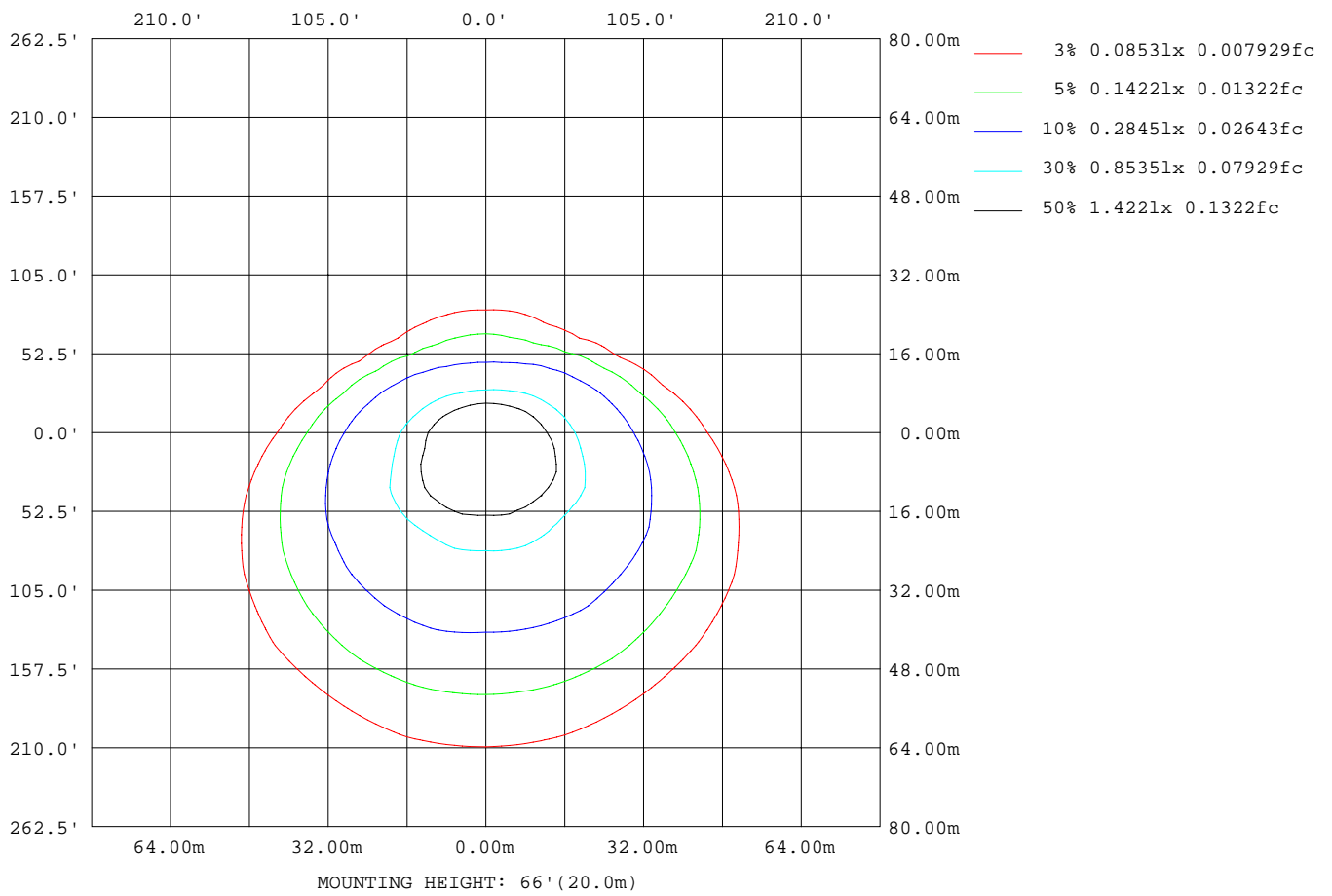
Note:The Curves indicate the illuminated area and the average illumination when the luminaire is at different distance.

C Range: 0 - 360DEG
 C Interval: 15.0DEG
 Test Speed: HIGH
 Temperature: 25.1DEG
 Operators: Alan Wang
 Test Date: 09 August 2021

γ Range: 0 - 180DEG
 γ Interval: 1.0DEG
 Test System: EVERFINE GO-R5000_V2 SYSTEM V2.00.416
 Humidity: 45.5%
 Test Distance: 2.500m [K=1.0473]
 Remarks:

ISOLUX DIAGRAM

Test:U:120.00V I:0.2515A P:30.070W PF:0.9965 Freq:60.00Hz Lamp Flux:4890.29x1 lm		
NAME: ASD Lighting Corp	TYPE: LED	WEIGHT:
SPEC.:	DIM.:	SERIAL No.:
MFR.: ASD Lighting Corp	SUR.:	Shielding Angle:



C Range: 0 - 360DEG
 C Interval: 15.0DEG
 Test Speed: HIGH
 Temperature: 25.1DEG
 Operators: Alan Wang
 Test Date: 09 August 2021

γ Range: 0 - 180DEG
 γ Interval: 1.0DEG
 Test System: EVERFINE GO-R5000_V2 SYSTEM V2.00.416
 Humidity: 45.5%
 Test Distance: 2.500m [K=1.0473]
 Remarks:

LED Avg.L Report

Test:U:120.00V I:0.2515A P:30.070W PF:0.9965 Freq:60.00Hz Lamp Flux:4890.29x1 lm		
NAME: ASD Lighting Corp	TYPE: LED	WEIGHT:
SPEC.:	DIM.:	SERIAL No.:
MFR.: ASD Lighting Corp	SUR.:	Shielding Angle:

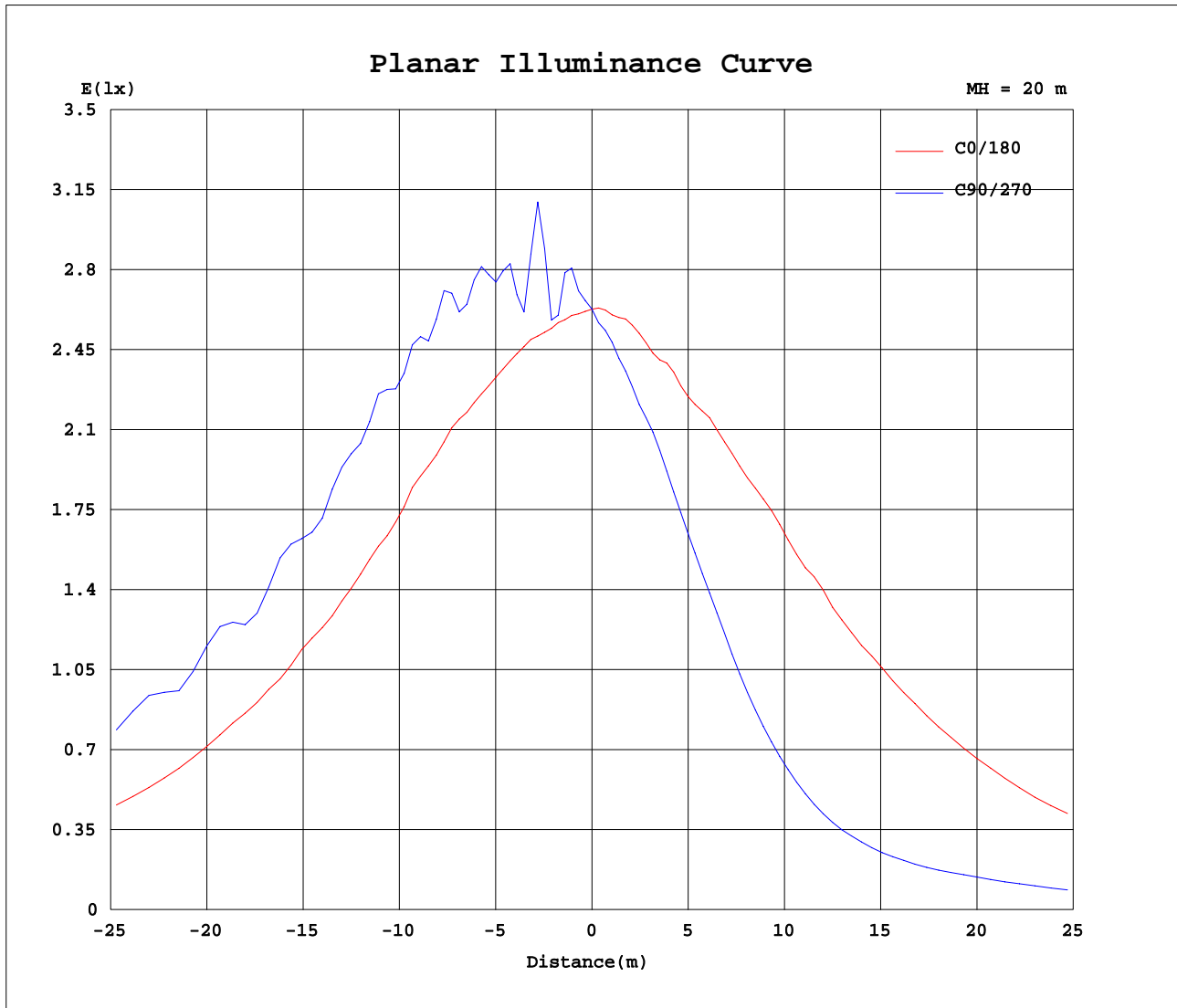
AvgL	cd/m2
L_0~180(65)av	34078
L_0~180(75)av	30865
L_0~180(85)av	40468
L_90~270(65)av	49932
L_90~270(75)av	77633
L_90~270(85)av	224022
L_45(65)av	47129
L_45(75)av	66797
L_45(85)av	165693

Standard: GB/T 29293-2012

C Range: 0 - 360DEG
 C Interval: 15.0DEG
 Test Speed: HIGH
 Temperature: 25.1DEG
 Operators: Alan Wang
 Test Date: 09 August 2021

γ Range: 0 - 180DEG
 γ Interval: 1.0DEG
 Test System: EVERFINE GO-R5000_V2 SYSTEM V2.00.416
 Humidity: 45.5%
 Test Distance: 2.500m [K=1.0473]
 Remarks:

Planar Illuminance Curve



C Range: 0 - 360DEG
 C Interval: 15.0DEG
 Test Speed: HIGH
 Temperature: 25.1DEG
 Operators: Alan Wang
 Test Date: 09 August 2021

γ Range: 0 - 180DEG
 γ Interval: 1.0DEG
 Test System: EVERFINE GO-R5000_V2 SYSTEM V2.00.416
 Humidity: 45.5%
 Test Distance: 2.500m [K=1.0473]
 Remarks:

LUMINOUS DISTRIBUTION INTENSITY DATA

Test:U:120.00V I:0.2515A P:30.070W PF:0.9965 Freq:60.00Hz Lamp Flux:4890.29x1 lm		
NAME: ASD Lighting Corp	TYPE: LED	WEIGHT:
SPEC.:	DIM.:	SERIAL No.:
MFR.: ASD Lighting Corp	SUR.:	Shielding Angle:

Table--1

UNIT: cd

C(DEG) γ (DEG)	0	15	30	45	60	75	90	105	120	135	150	165	180	195	210	225	240	255	270
0	1051	1051	1051	1051	1051	1051	1051	1051	1051	1051	1051	1051	1051	1051	1051	1051	1051	1051	1051
5	1039	1062	1098	1127	1092	1065	1052	1073	1101	1121	1089	1061	1046	1020	1003	980	965	958	954
10	1032	1107	1026	1201	1185	1115	1095	1136	1214	1138	1040	1058	1007	969	921	885	868	849	841
15	1017	1061	1243	1140	1195	1213	1233	1210	1186	1085	1134	1079	981	919	847	780	729	700	692
20	1016	1007	1088	1199	1236	1272	1300	1256	1252	1164	1120	1045	962	865	769	669	595	552	539
25	993	1108	1192	1275	1310	1321	1328	1320	1336	1240	1083	1001	939	808	680	559	460	407	394
30	944	1121	1209	1345	1364	1355	1315	1372	1351	1298	1102	977	897	739	585	451	346	296	284
35	898	1080	1234	1345	1369	1292	1246	1321	1324	1307	1143	947	841	663	495	359	262	222	215
40	858	1010	1234	1293	1299	1331	1257	1340	1342	1298	1128	928	802	597	411	279	203	181	177
45	808	1000	1261	1278	1329	1349	1306	1365	1313	1255	1133	914	748	518	336	215	170	163	161
50	746	983	1239	1186	1280	1362	1308	1333	1271	1273	1153	888	686	444	261	168	152	149	143
55	687	962	1216	1213	1303	1366	1339	1367	1308	1278	1129	862	611	362	195	144	138	129	126
60	618	904	1170	1229	1344	1346	1315	1391	1328	1258	1084	811	526	274	154	128	121	119	117
65	528	843	1123	1213	1341	1326	1305	1365	1311	1212	1020	745	431	195	127	114	106	101	100
70	427	755	1006	1158	1231	1275	1295	1295	1227	1122	937	654	321	142	107	97.0	85.3	81.7	81.9
75	316	663	927	1073	1195	1246	1275	1275	1177	1071	866	547	216	109	89.8	76.1	65.0	61.6	62.7
80	212	553	841	991	1129	1187	1209	1207	1119	979	790	441	135	84.7	72.8	55.2	44.2	39.7	39.7
85	133	436	757	932	1101	1221	1284	1236	1069	912	690	329	101	67.3	55.0	35.8	22.8	16.4	16.0
90	104	332	657	851	1028	1129	1180	1141	999	820	575	220	83.5	55.0	40.1	22.4	6.83	1.78	1.72
95	83.2	233	543	744	908	968	980	983	887	715	460	153	71.5	48.9	33.5	18.3	4.37	1.77	1.75
100	43.3	82.4	157	573	781	842	833	855	756	470	103	60.2	40.0	24.8	17.8	14.8	3.54	2.27	2.17
105	43.1	92.0	245	155	303	435	455	417	256	176	195	67.6	41.0	12.0	19.4	7.32	2.73	2.87	3.07
110	54.1	79.3	204	232	192	219	196	218	166	220	167	58.0	49.5	12.3	23.6	7.14	2.75	3.06	3.33
115	48.0	61.5	135	177	196	292	305	265	169	174	124	48.1	43.5	9.56	18.9	8.21	2.89	3.12	3.38
120	42.5	52.3	97.8	127	167	226	239	212	151	123	96.2	42.6	37.5	7.25	14.7	6.28	2.87	3.04	3.22
125	36.3	46.6	81.6	105	138	209	213	187	127	101	80.5	36.6	31.9	5.60	11.6	4.34	2.75	2.91	3.02
130	10.2	34.6	75.6	91.3	122	188	192	168	110	88.4	69.5	21.3	6.31	8.46	8.62	2.93	2.09	2.75	2.83
135	16.3	13.6	64.1	84.5	119	160	161	147	99.4	78.7	58.9	12.3	12.4	12.2	6.46	2.36	2.12	1.84	1.79
140	13.0	15.7	55.4	80.4	118	138	136	132	99.5	72.0	48.9	15.6	9.71	8.93	4.37	1.78	2.11	2.44	2.27
145	7.86	16.7	44.0	77.1	111	127	125	119	93.3	61.6	34.6	6.03	2.28	1.70	1.80	1.76	1.70	2.01	1.96
150	2.77	9.16	31.7	67.2	96.3	108	108	100	81.2	52.7	23.0	4.24	2.53	1.74	1.76	1.85	1.84	1.74	1.63
155	2.28	4.32	6.21	52.1	74.8	84.3	85.1	77.8	64.3	41.4	5.20	2.05	2.29	1.95	1.73	1.87	2.05	2.00	1.79
160	2.20	3.70	15.2	15.4	51.3	59.8	61.1	55.3	44.5	15.1	7.87	2.23	1.81	1.84	1.68	1.85	2.01	2.08	1.82
165	2.27	2.75	6.03	9.29	4.36	17.6	22.6	18.4	5.12	9.74	4.32	2.41	2.47	2.42	2.11	1.75	1.80	1.83	1.59
170	1.60	1.64	1.74	2.82	6.18	10.6	13.9	12.2	9.33	4.22	2.50	2.38	2.53	2.52	2.42	2.10	1.79	1.44	1.24
175	1.72	1.74	1.82	2.05	2.28	2.28	2.25	2.30	2.39	2.44	2.45	2.44	2.52	2.50	2.29	1.88	1.60	1.48	1.44
180	2.43	2.43	2.43	2.43	2.43	2.43	2.43	2.43	2.43	2.43	2.43	2.43	2.43	2.16	2.16	2.16	2.16	2.16	2.16

C Range: 0 - 360DEG
 C Interval: 15.0DEG
 Test Speed: HIGH
 Temperature: 25.1DEG
 Operators: Alan Wang
 Test Date: 09 August 2021

γ Range: 0 - 180DEG
 γ Interval: 1.0DEG
 Test System: EVERFINE GO-R5000_V2 SYSTEM V2.00.416
 Humidity: 45.5%
 Test Distance: 2.500m [K=1.0473]
 Remarks:

LUMINOUS DISTRIBUTION INTENSITY DATA

Test:U:120.00V I:0.2515A P:30.070W PF:0.9965 Freq:60.00Hz Lamp Flux:4890.29x1 lm		
NAME: ASD Lighting Corp	TYPE: LED	WEIGHT:
SPEC.:	DIM.:	SERIAL No.:
MFR.: ASD Lighting Corp	SUR.:	Shielding Angle:

Table--2

UNIT: cd

C(DEG) γ (DEG)	285	300	315	330	345														
0	1051	1051	1051	1051	1051														
5	952	960	976	994	1005														
10	849	863	885	922	971														
15	703	739	798	862	933														
20	562	616	694	800	905														
25	422	493	597	730	854														
30	308	380	503	643	793														
35	230	289	405	553	731														
40	182	222	321	477	668														
45	160	174	246	393	592														
50	147	148	190	314	519														
55	131	133	152	238	434														
60	120	123	129	175	348														
65	103	107	114	137	260														
70	82.2	90.0	99.9	111	180														
75	61.6	69.9	82.9	93.2	128														
80	40.5	48.8	63.8	77.6	101														
85	16.8	28.1	43.6	62.7	80.9														
90	1.78	12.4	31.1	50.0	68.1														
95	1.80	9.18	26.6	42.0	60.2														
100	2.29	7.83	21.8	18.4	33.3														
105	2.79	6.15	10.3	27.4	25.1														
110	2.92	2.88	11.7	28.3	26.9														
115	2.63	3.63	12.9	24.5	23.9														
120	2.61	3.07	10.0	20.3	21.6														
125	2.63	2.67	7.17	16.5	19.8														
130	2.51	1.96	5.27	12.6	13.3														
135	1.75	2.16	3.71	9.34	18.1														
140	2.07	2.03	2.07	4.84	12.7														
145	1.74	1.71	1.87	2.20	5.41														
150	1.64	1.90	2.02	2.03	2.13														
155	1.85	1.93	2.05	2.08	1.94														
160	1.69	1.76	2.00	2.03	2.11														
165	1.44	1.61	1.50	1.79	2.24														
170	1.22	1.32	1.44	1.60	1.74														
175	1.42	1.42	1.45	1.60	1.69														
180	2.16	2.16	2.16	2.16	2.16														

C Range: 0 - 360DEG
 C Interval: 15.0DEG
 Test Speed: HIGH
 Temperature: 25.1DEG
 Operators: Alan Wang
 Test Date: 09 August 2021

γ Range: 0 - 180DEG
 γ Interval: 1.0DEG
 Test System: EVERFINE GO-R5000_V2 SYSTEM V2.00.416
 Humidity: 45.5%
 Test Distance: 2.500m [K=1.0473]
 Remarks: