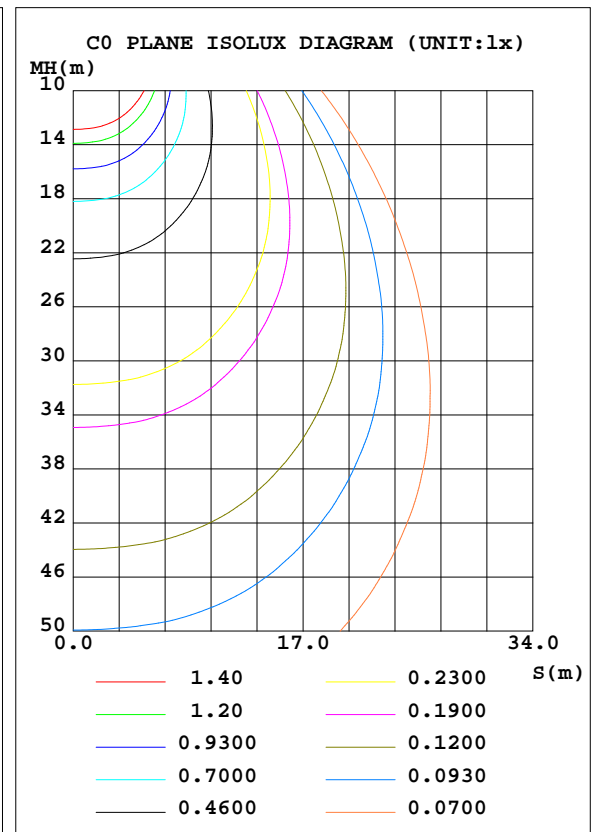
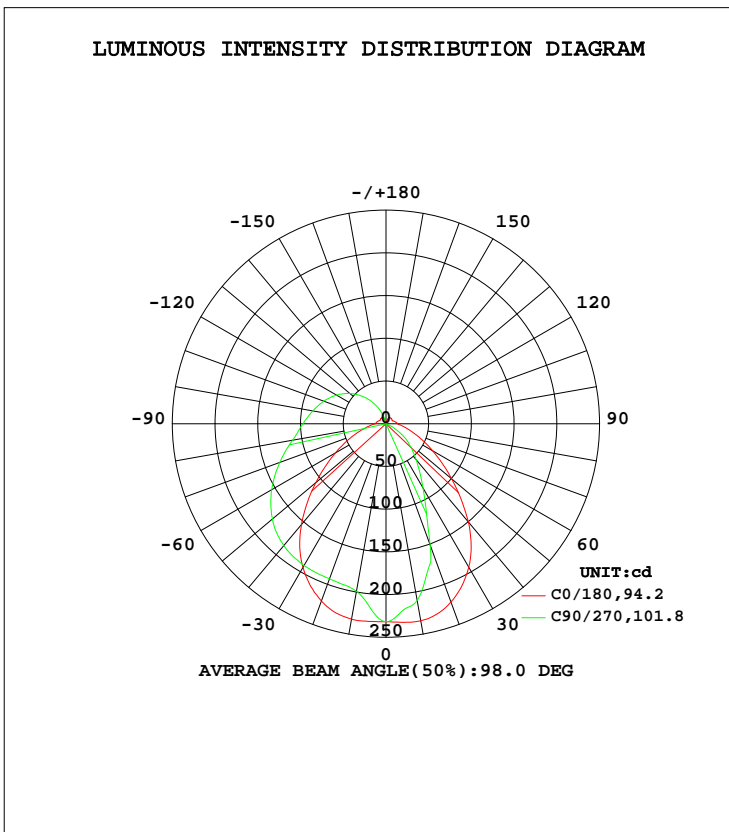


LUMINAIRE PHOTOMETRIC TEST REPORT

| | | |
|---|-----------|---------------------|
| Test:U:120.0V I:0.1312A P:15.45W PF:0.9812 Lamp Flux:1138 x1 lm | | |
| NAME: LED luminaires | TYPE:N/A | WEIGHT:N/A |
| SPEC.:ASD-LVF24M-3D15CC-BK 5000K | DIM.: N/A | SERIAL No.:N/A |
| MFR.: ASD Lighting corp | SUR.:N/A | Shielding Angle:N/A |

| DATA OF LAMP | | PHOTOMETRIC DATA | | | |
|---------------------------------|------|------------------|---------|-------------------------|-----------|
| MODEL ASD-LVF24M-3D15CC-BK 5000 | | Eff: 73,66 lm/W | | | |
| | | Imax(cd) | 234.3 | S/MH(C0/180) | 1.24 |
| NOMINAL POWER(W) | | LOR(%) | 100.0 | S/MH(C90/270) | 0.77 |
| RATED VOLTAGE(V) | 120 | TOTAL FLUX(lm) | 1138 | η UP, DN(C0-180) | 18.8,56.2 |
| NOMINAL FLUX(lm) | 1138 | CIE CLASS | SEMI-D. | η UP, DN(C180-360) | 1.2,23.8 |
| LAMPS INSIDE | 1 | η up(%) | 20.0 | CIBSE SHR NOM | 1.25 |
| TEST VOLTAGE(V) | 120 | η down(%) | 80.0 | CIBSE SHR MAX | 1.25 |



C Range: 0 - 360DEG
 C Interval: 22.5DEG
 Test Speed: HIGH
 Temperature:25.1DEG
 Operators:Evan
 Test Date:2022-11-29

γ Range: 0 - 180DEG
 γ Interval: 1.0DEG
 Test System:EVERFINE GO-R5000_V2 SYSTEM V2.0.351
 Humidity:42%
 Test Distance:2.532m [K=1.0000]
 Remarks:

ZONAL FLUX DIAGRAM

ZONAL FLUX DIAGRAM:

| γ | C0 | C45 | C90 | C135 | C180 | C225 | C270 | C315 | γ | Φ zone | Φ total | %lum,lamp |
|-----|-----------------------|--------|--------|--------|--------|--------|--------|--------|---------|---------|---------|-----------|
| 10 | 232.2 | 208.4 | 199.2 | 209.9 | 234.2 | 219.1 | 210.1 | 216.5 | 0- 10 | 21.17 | 21.17 | 2.69,2.69 |
| 20 | 220.8 | 198.0 | 193.3 | 198.0 | 222.2 | 188.9 | 151.3 | 189.8 | 10- 20 | 58.08 | 79.25 | 10.1,10.1 |
| 30 | 194.2 | 192.1 | 191.6 | 191.2 | 193.9 | 131.8 | 86.65 | 134.6 | 20- 30 | 82.79 | 162.0 | 20.6,20.6 |
| 40 | 154.1 | 183.8 | 186.1 | 182.1 | 150.1 | 81.02 | 55.00 | 83.53 | 30- 40 | 94.60 | 256.6 | 32.6,32.6 |
| 50 | 107.1 | 171.7 | 173.5 | 169.4 | 100.4 | 50.25 | 34.17 | 51.82 | 40- 50 | 96.13 | 352.8 | 44.8,44.8 |
| 60 | 68.42 | 155.2 | 154.5 | 152.8 | 62.89 | 29.27 | 13.66 | 30.31 | 50- 60 | 88.82 | 441.6 | 56.1,56.1 |
| 70 | 40.83 | 135.5 | 132.3 | 133.3 | 37.06 | 7.964 | 0.1036 | 8.837 | 60- 70 | 75.77 | 517.4 | 65.7,65.7 |
| 80 | 22.63 | 114.7 | 111.0 | 112.7 | 21.83 | 2.139 | 0.1320 | 1.175 | 70- 80 | 61.89 | 579.2 | 73.6,73.6 |
| 90 | 12.54 | 98.14 | 97.36 | 97.26 | 13.74 | 1.189 | 0.1774 | 0.7366 | 80- 90 | 50.77 | 630.0 | 80,80 |
| 100 | 11.21 | 85.44 | 87.03 | 84.73 | 11.66 | 1.007 | 0.1964 | 0.7092 | 90-100 | 43.36 | 673.4 | 85.5,85.5 |
| 110 | 9.616 | 73.03 | 77.56 | 72.48 | 9.569 | 0.6509 | 0.1581 | 0.5283 | 100-110 | 36.42 | 709.8 | 90.2,90.2 |
| 120 | 8.186 | 60.11 | 67.27 | 59.66 | 8.224 | 0.3783 | 0.1318 | 0.2680 | 110-120 | 29.07 | 738.9 | 93.9,93.9 |
| 130 | 8.582 | 47.05 | 55.19 | 46.66 | 8.842 | 0.1221 | 0.1324 | 0.1350 | 120-130 | 21.47 | 760.3 | 96.6,96.6 |
| 140 | 8.820 | 33.34 | 41.47 | 33.05 | 8.895 | 0.2585 | 0.1324 | 0.1802 | 130-140 | 14.36 | 774.7 | 98.4,98.4 |
| 150 | 8.532 | 19.49 | 26.47 | 19.25 | 8.438 | 0.9317 | 0.1563 | 0.5716 | 140-150 | 8.162 | 782.9 | 99.4,99.4 |
| 160 | 6.324 | 6.729 | 11.35 | 6.626 | 5.754 | 2.489 | 0.2151 | 0.5805 | 150-160 | 3.554 | 786.4 | 99.9,99.9 |
| 170 | 1.405 | 1.384 | 0.4963 | 1.206 | 0.9853 | 0.7687 | 0.2487 | 0.2789 | 160-170 | 0.8108 | 787.2 | 100,100 |
| 180 | 0.3162 | 0.3437 | 0.3525 | 0.3509 | 0.3304 | 0.3301 | 0.3474 | 0.3528 | 170-180 | 0.0544 | 787.3 | 100,100 |
| DEG | LUMINOUS INTENSITY:cd | | | | | | | | | UNIT:lm | | |

Conical surface Flux(90deg): 305.18 lm

%lum = 38.8%
 %lamp = 38.8%

Conical surface Flux(120deg): 441.59 lm

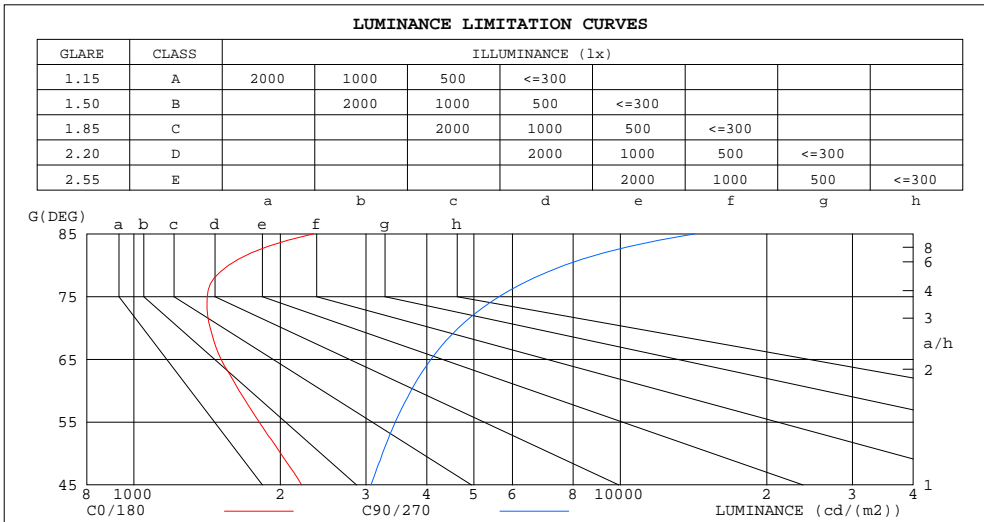
%lum = 56.1%
 %lamp = 56.1%

C Range: 0 - 360DEG
 C Interval: 22.5DEG
 Test Speed: HIGH
 Temperature:25.1DEG
 Operators:Evan
 Test Date:2022-11-29

γ Range: 0 - 180DEG
 γ Interval: 1.0DEG
 Test System:EVERFINE GO-R5000_V2 SYSTEM V2.0.351
 Humidity:42%
 Test Distance:2.532m [K=1.0000]
 Remarks:

LUMINANCE LIMITATION CURVES

| | | |
|---|-----------|---------------------|
| Test:U:120.0V I:0.1312A P:15.45W PF:0.9812 Lamp Flux:1138 x1 lm | | |
| NAME: LED luminaires | TYPE:N/A | WEIGHT:N/A |
| SPEC.:ASD-LVF24M-3D15CC-BK 5000K | DIM.: N/A | SERIAL No.:N/A |
| MFR.: ASD Lighting corp | SUR.:N/A | Shielding Angle:N/A |



| LUMINANCE cd/(m2) | | |
|-------------------|--------|---------|
| G(DEG) | C0/180 | C90/270 |
| 85 | 2340 | 14230 |
| 80 | 1566 | 7678 |
| 75 | 1415 | 5635 |
| 70 | 1435 | 4646 |
| 65 | 1512 | 4081 |
| 60 | 1645 | 3711 |
| 55 | 1810 | 3446 |
| 50 | 2003 | 3243 |
| 45 | 2213 | 3072 |

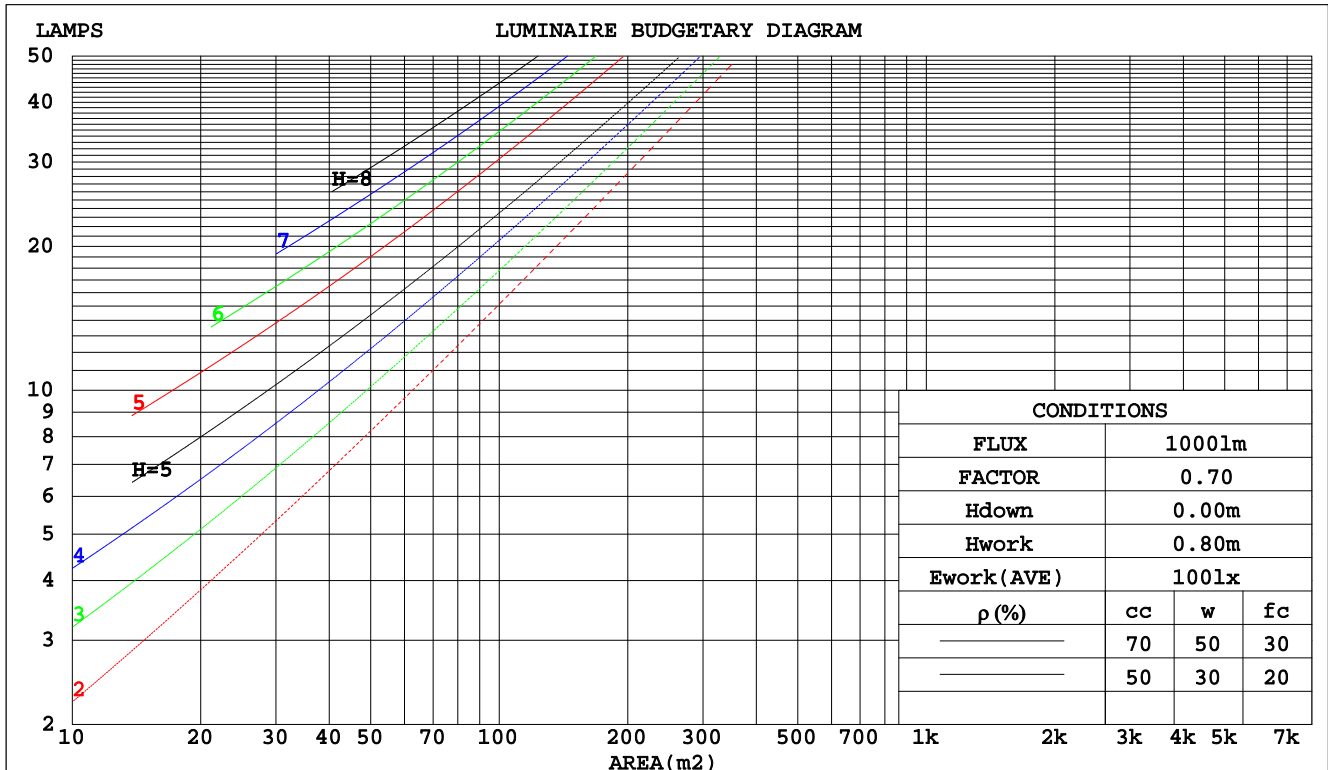
C Range: 0 - 360DEG
 C Interval: 22.5DEG
 Test Speed: HIGH
 Temperature:25.1DEG
 Operators:Evan
 Test Date:2022-11-29

γ Range: 0 - 180DEG
 γ Interval: 1.0DEG
 Test System:EVERFINE GO-R5000_V2 SYSTEM V2.0.351
 Humidity:42%
 Test Distance:2.532m [K=1.0000]
 Remarks:

CU AND LUMINAIRE BUDGETARY ESTIMATE DIAGRAM

| | | |
|---|-----------|---------------------|
| Test:U:120.0V I:0.1312A P:15.45W PF:0.9812 Lamp Flux:1138 x1 lm | | |
| NAME: LED luminaires | TYPE:N/A | WEIGHT:N/A |
| SPEC.:ASD-LVF24M-3D15CC-BK 5000K | DIM.: N/A | SERIAL No.:N/A |
| MFR.: ASD Lighting corp | SUR.:N/A | Shielding Angle:N/A |

| pcc | 80% | | | 70% | | | 50% | | | 30% | | | 10% | | | 0 |
|------|---------------------------------|------|------|------|------|------|------|------|------|-----|-----|-----|-----|-----|-----|-----|
| | 50% | 30% | 10% | 50% | 30% | 10% | 50% | 30% | 10% | 50% | 30% | 10% | 50% | 30% | 10% | 0 |
| pw | | | | | | | | | | | | | | | | |
| pfc | | | | | | | | | | | | | | | | |
| RCR | RCR:Room Cavity Ratio | | | | | | | | | | | | | | | |
| | Coefficients of Utilization(CU) | | | | | | | | | | | | | | | |
| 0.0 | 1.14 | 1.14 | 1.14 | 1.09 | 1.09 | 1.09 | 1.00 | 1.00 | 1.00 | .92 | .92 | .92 | .84 | .84 | .84 | .80 |
| 1.0 | .96 | .91 | .87 | .92 | .88 | .84 | .84 | .81 | .77 | .77 | .74 | .71 | .70 | .68 | .66 | .62 |
| 2.0 | .83 | .76 | .70 | .80 | .73 | .67 | .73 | .67 | .63 | .67 | .62 | .58 | .61 | .57 | .54 | .51 |
| 3.0 | .73 | .64 | .58 | .70 | .62 | .56 | .64 | .58 | .52 | .59 | .53 | .49 | .53 | .49 | .46 | .42 |
| 4.0 | .64 | .55 | .49 | .62 | .54 | .47 | .57 | .50 | .44 | .52 | .46 | .42 | .48 | .43 | .39 | .36 |
| 5.0 | .58 | .48 | .42 | .55 | .47 | .41 | .51 | .44 | .38 | .47 | .41 | .36 | .43 | .38 | .34 | .31 |
| 6.0 | .52 | .43 | .36 | .50 | .41 | .35 | .46 | .39 | .34 | .42 | .36 | .32 | .39 | .34 | .30 | .27 |
| 7.0 | .47 | .38 | .32 | .45 | .37 | .31 | .42 | .35 | .30 | .39 | .33 | .28 | .36 | .31 | .27 | .24 |
| 8.0 | .43 | .34 | .29 | .41 | .33 | .28 | .38 | .31 | .27 | .35 | .30 | .25 | .33 | .28 | .24 | .22 |
| 9.0 | .39 | .31 | .26 | .38 | .30 | .25 | .35 | .29 | .24 | .33 | .27 | .23 | .30 | .25 | .22 | .20 |
| 10.0 | .36 | .28 | .23 | .35 | .28 | .23 | .33 | .26 | .22 | .30 | .25 | .21 | .28 | .23 | .20 | .18 |



C Range: 0 - 360DEG
 C Interval: 22.5DEG
 Test Speed: HIGH
 Temperature:25.1DEG
 Operators:Evan
 Test Date:2022-11-29

γ Range: 0 - 180DEG
 γ Interval: 1.0DEG
 Test System:EVERFINE GO-R5000_V2 SYSTEM V2.0.351
 Humidity:42%
 Test Distance:2.532m [K=1.0000]
 Remarks:

WEC AND CCEC

| | | |
|---|-----------|---------------------|
| Test:U:120.0V I:0.1312A P:15.45W PF:0.9812 Lamp Flux:1138 x1 lm | | |
| NAME: LED luminaires | TYPE:N/A | WEIGHT:N/A |
| SPEC.:ASD-LVF24M-3D15CC-BK 5000K | DIM.: N/A | SERIAL No.:N/A |
| MFR.: ASD Lighting corp | SUR.:N/A | Shielding Angle:N/A |

| ρcc | 80% | | | 70% | | | 50% | | | 30% | | | 10% | | | 0 |
|------|-----------------------|------|------|------|------|------|---------------------------------|------|------|------|------|------|------|------|------|---|
| ρw | 50% | 30% | 10% | 50% | 30% | 10% | 50% | 30% | 10% | 50% | 30% | 10% | 50% | 30% | 10% | 0 |
| ρfc | 20% | | | 20% | | | 20% | | | 20% | | | 20% | | | 0 |
| RCR | RCR:Room Cavity Ratio | | | | | | Wall Exitance Coefficients(WEC) | | | | | | | | | |
| 0.0 | | | | | | | | | | | | | | | | |
| 1.0 | .359 | .204 | .065 | .346 | .197 | .063 | .321 | .184 | .059 | .298 | .172 | .055 | .277 | .161 | .052 | |
| 2.0 | .314 | .172 | .053 | .302 | .166 | .051 | .279 | .155 | .048 | .259 | .145 | .045 | .239 | .135 | .043 | |
| 3.0 | .280 | .149 | .045 | .270 | .144 | .043 | .249 | .135 | .041 | .231 | .126 | .039 | .213 | .118 | .037 | |
| 4.0 | .254 | .132 | .039 | .244 | .128 | .038 | .226 | .120 | .036 | .209 | .112 | .034 | .193 | .105 | .032 | |
| 5.0 | .232 | .118 | .034 | .223 | .114 | .033 | .206 | .107 | .032 | .191 | .101 | .030 | .176 | .094 | .028 | |
| 6.0 | .213 | .107 | .031 | .205 | .104 | .030 | .190 | .097 | .028 | .175 | .091 | .027 | .162 | .085 | .025 | |
| 7.0 | .197 | .097 | .028 | .190 | .095 | .027 | .176 | .089 | .026 | .163 | .083 | .024 | .150 | .078 | .023 | |
| 8.0 | .183 | .090 | .025 | .177 | .087 | .025 | .164 | .082 | .023 | .152 | .077 | .022 | .140 | .072 | .021 | |
| 9.0 | .171 | .083 | .023 | .165 | .080 | .023 | .153 | .076 | .021 | .142 | .071 | .020 | .131 | .067 | .019 | |
| 10.0 | .161 | .077 | .021 | .155 | .075 | .021 | .144 | .070 | .020 | .133 | .066 | .019 | .124 | .062 | .018 | |

| ρcc | 80% | | | 70% | | | 50% | | | 30% | | | 10% | | | 0 |
|------|-----------------------|------|------|------|------|------|--|------|------|------|------|------|------|------|------|---|
| ρw | 50% | 30% | 10% | 50% | 30% | 10% | 50% | 30% | 10% | 50% | 30% | 10% | 50% | 30% | 10% | 0 |
| ρfc | 20% | | | 20% | | | 20% | | | 20% | | | 20% | | | 0 |
| RCR | RCR:Room Cavity Ratio | | | | | | Ceiling Cavity Exitance Coefficients(CCEC) | | | | | | | | | |
| 0.0 | .343 | .343 | .343 | .293 | .293 | .293 | .200 | .200 | .200 | .115 | .115 | .115 | .037 | .037 | .037 | |
| 1.0 | .337 | .309 | .284 | .289 | .265 | .244 | .197 | .183 | .169 | .114 | .106 | .098 | .036 | .034 | .032 | |
| 2.0 | .330 | .286 | .250 | .282 | .246 | .216 | .193 | .170 | .151 | .112 | .099 | .088 | .036 | .032 | .029 | |
| 3.0 | .322 | .270 | .228 | .276 | .233 | .198 | .189 | .162 | .139 | .109 | .094 | .082 | .035 | .031 | .027 | |
| 4.0 | .314 | .257 | .214 | .269 | .222 | .186 | .185 | .155 | .131 | .107 | .091 | .077 | .034 | .030 | .025 | |
| 5.0 | .306 | .247 | .204 | .263 | .214 | .177 | .181 | .149 | .125 | .105 | .088 | .074 | .034 | .029 | .024 | |
| 6.0 | .299 | .239 | .196 | .257 | .207 | .171 | .177 | .145 | .121 | .103 | .085 | .072 | .033 | .028 | .024 | |
| 7.0 | .292 | .233 | .191 | .251 | .202 | .166 | .174 | .141 | .118 | .101 | .083 | .070 | .033 | .027 | .023 | |
| 8.0 | .286 | .227 | .187 | .246 | .197 | .163 | .170 | .138 | .115 | .099 | .082 | .069 | .032 | .027 | .023 | |
| 9.0 | .280 | .222 | .184 | .241 | .193 | .160 | .167 | .136 | .114 | .097 | .080 | .068 | .031 | .026 | .022 | |
| 10.0 | .274 | .218 | .181 | .236 | .189 | .158 | .164 | .133 | .112 | .096 | .079 | .067 | .031 | .026 | .022 | |

C Range: 0 - 360DEG
 C Interval: 22.5DEG
 Test Speed: HIGH
 Temperature:25.1DEG
 Operators:Evan
 Test Date:2022-11-29

γ Range: 0 - 180DEG
 γ Interval: 1.0DEG
 Test System:EVERFINE GO-R5000_V2 SYSTEM V2.0.351
 Humidity:42%
 Test Distance:2.532m [K=1.0000]
 Remarks:

UGR(Unified Glare Rating) Table

| | | | | | | | | | | |
|---|------------------|------|------|------|-----------|----------------|------|---------------------|------|------|
| Test:U:120.0V I:0.1312A P:15.45W PF:0.9812 Lamp Flux:1138 x1 lm | | | | | | | | | | |
| NAME: LED luminaires | | | | | TYPE:N/A | | | WEIGHT:N/A | | |
| SPEC.:ASD-LVF24M-3D15CC-BK 5000K | | | | | DIM.: N/A | | | SERIAL No.:N/A | | |
| MFR.: ASD Lighting corp | | | | | SUR.:N/A | | | Shielding Angle:N/A | | |
| ceiling/cavity | 0.7 | 0.7 | 0.5 | 0.5 | 0.3 | 0.7 | 0.7 | 0.5 | 0.5 | 0.3 |
| walls | 0.5 | 0.3 | 0.5 | 0.3 | 0.3 | 0.5 | 0.3 | 0.5 | 0.3 | 0.3 |
| working plane | 0.2 | 0.2 | 0.2 | 0.2 | 0.2 | 0.2 | 0.2 | 0.2 | 0.2 | 0.2 |
| Room dimensions | Viewed crosswise | | | | | Viewed endwise | | | | |
| x = 2H y = 2H | 15.7 | 17.0 | 16.3 | 17.5 | 18.1 | 17.6 | 18.9 | 18.2 | 19.5 | 20.1 |
| 3H | 17.3 | 18.5 | 17.9 | 19.1 | 19.7 | 20.2 | 21.4 | 20.8 | 22.0 | 22.6 |
| 4H | 18.0 | 19.1 | 18.6 | 19.7 | 20.4 | 21.6 | 22.7 | 22.2 | 23.3 | 24.0 |
| 6H | 18.6 | 19.7 | 19.2 | 20.3 | 20.9 | 23.1 | 24.2 | 23.7 | 24.8 | 25.5 |
| 8H | 18.9 | 19.9 | 19.5 | 20.5 | 21.2 | 24.0 | 25.0 | 24.6 | 25.6 | 26.3 |
| 12H | 19.1 | 20.1 | 19.7 | 20.7 | 21.4 | 25.0 | 26.0 | 25.6 | 26.6 | 27.3 |
| 4H 2H | 17.2 | 18.3 | 17.8 | 18.9 | 19.5 | 18.4 | 19.6 | 19.0 | 20.1 | 20.8 |
| 3H | 19.3 | 20.3 | 19.9 | 20.9 | 21.6 | 21.3 | 22.3 | 21.9 | 22.9 | 23.6 |
| 4H | 20.3 | 21.2 | 21.0 | 21.9 | 22.6 | 22.8 | 23.7 | 23.5 | 24.4 | 25.1 |
| 6H | 21.3 | 22.1 | 21.9 | 22.7 | 23.5 | 24.6 | 25.4 | 25.2 | 26.0 | 26.8 |
| 8H | 21.7 | 22.4 | 22.3 | 23.1 | 23.9 | 25.5 | 26.3 | 26.2 | 26.9 | 27.7 |
| 12H | 22.0 | 22.7 | 22.7 | 23.4 | 24.2 | 26.6 | 27.3 | 27.3 | 28.0 | 28.8 |
| 8H 4H | 21.5 | 22.3 | 22.2 | 23.0 | 23.8 | 23.4 | 24.2 | 24.1 | 24.8 | 25.6 |
| 6H | 23.0 | 23.7 | 23.7 | 24.4 | 25.2 | 25.5 | 26.1 | 26.2 | 26.8 | 27.6 |
| 8H | 23.8 | 24.3 | 24.5 | 25.1 | 25.9 | 26.6 | 27.2 | 27.4 | 27.9 | 28.8 |
| 12H | 24.4 | 24.9 | 25.2 | 25.7 | 26.6 | 28.0 | 28.5 | 28.7 | 29.2 | 30.1 |
| 12H 4H | 21.9 | 22.6 | 22.6 | 23.2 | 24.1 | 23.5 | 24.2 | 24.2 | 24.9 | 25.7 |
| 6H | 23.6 | 24.2 | 24.3 | 24.9 | 25.7 | 25.7 | 26.3 | 26.4 | 27.0 | 27.8 |
| 8H | 24.5 | 25.0 | 25.3 | 25.8 | 26.7 | 27.0 | 27.5 | 27.7 | 28.2 | 29.1 |
| Variations with the observer position at spacings: | | | | | | | | | | |
| S = 1.0H | + 0.1 / - 0.1 | | | | | + 0.1 / - 0.1 | | | | |
| 1.5H | + 0.2 / - 0.3 | | | | | + 0.2 / - 0.3 | | | | |
| 2.0H | + 0.3 / - 0.5 | | | | | + 0.3 / - 0.4 | | | | |

CIE Pub.117 Corrected 787.3 lm Total Lamp Luminous Flux.(8log(F/F0) = -0.8)

C Range: 0 - 360DEG
 C Interval: 22.5DEG
 Test Speed: HIGH
 Temperature:25.1DEG
 Operators:Evan
 Test Date:2022-11-29

γ Range: 0 - 180DEG
 γ Interval: 1.0DEG
 Test System:EVERFINE GO-R5000_V2 SYSTEM V2.0.351
 Humidity:42%
 Test Distance:2.532m [K=1.0000]
 Remarks:

UTILIZATION FACTORS TABLE

| | | |
|---|-----------|---------------------|
| Test:U:120.0V I:0.1312A P:15.45W PF:0.9812 Lamp Flux:1138 x1 lm | | |
| NAME: LED luminaires | TYPE:N/A | WEIGHT:N/A |
| SPEC.:ASD-LVF24M-3D15CC-BK 5000K | DIM.: N/A | SERIAL No.:N/A |
| MFR.: ASD Lighting corp | SUR.:N/A | Shielding Angle:N/A |

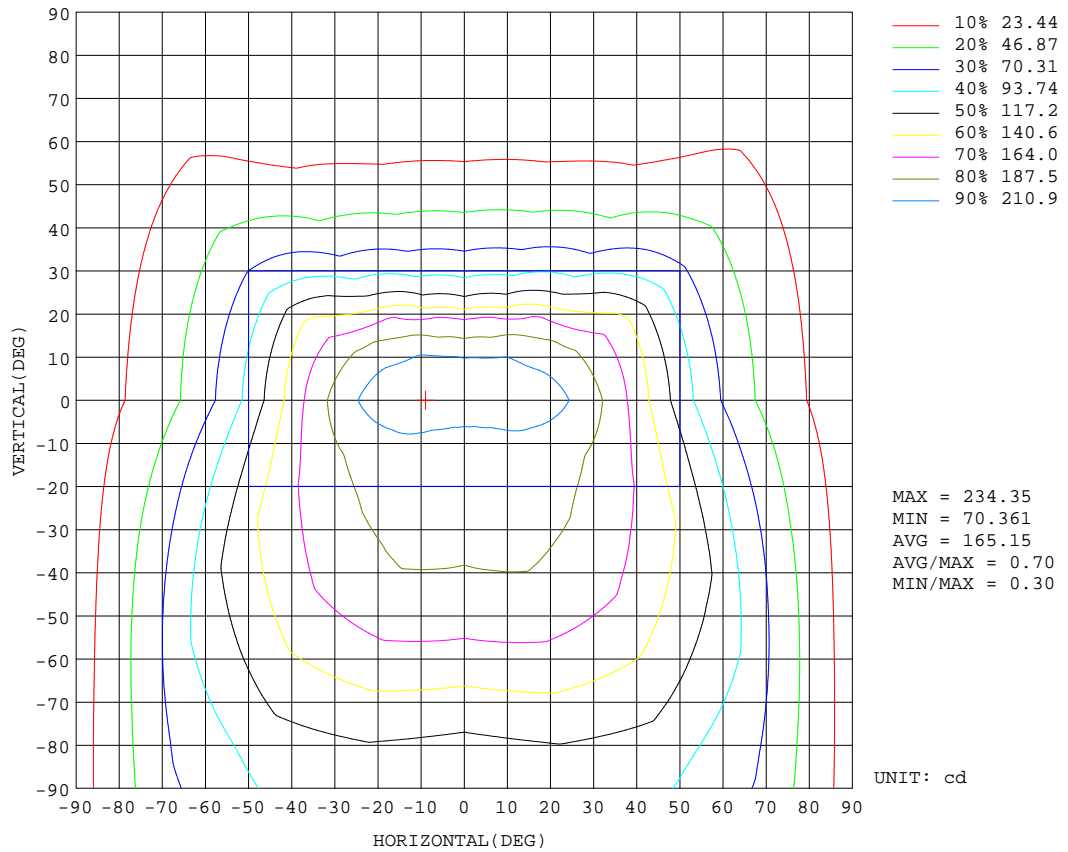
| REFLECTANCE | | | | | | | | | | |
|----------------------------------|---|-----|-----------|-----|-----|-----|---------------|-----|-----|--------|
| Ceiling | 0.8 | 0.8 | 0.8 | 0.7 | 0.7 | 0.7 | 0.5 | 0.5 | 0.5 | 0 |
| Walls | 0.7 | 0.5 | 0.3 | 0.7 | 0.5 | 0.3 | 0.7 | 0.5 | 0.3 | 0 |
| Working plane | 0.2 | 0.2 | 0.2 | 0.2 | 0.2 | 0.2 | 0.2 | 0.2 | 0.2 | 0 |
| ROOM INDEX | UTILIZATION FACTORS(PERCENT) $k(RI) \times RCR = 5$ | | | | | | | | | |
| k = 0.60 | 50 | 38 | 31 | 49 | 38 | 31 | 47 | 37 | 30 | 24 |
| 0.80 | 59 | 47 | 39 | 57 | 46 | 39 | 55 | 44 | 38 | 30 |
| 1.00 | 67 | 54 | 46 | 65 | 53 | 46 | 61 | 53 | 44 | 36 |
| 1.25 | 73 | 61 | 53 | 71 | 60 | 52 | 67 | 57 | 51 | 41 |
| 1.50 | 78 | 67 | 59 | 76 | 65 | 58 | 71 | 62 | 55 | 45 |
| 2.00 | 85 | 75 | 67 | 82 | 73 | 65 | 76 | 68 | 62 | 51 |
| 2.50 | 90 | 80 | 72 | 86 | 77 | 70 | 80 | 73 | 67 | 54 |
| 3.00 | 93 | 84 | 77 | 89 | 81 | 75 | 82 | 76 | 71 | 57 |
| 4.00 | 98 | 90 | 84 | 94 | 87 | 81 | 86 | 81 | 76 | 61 |
| 5.00 | 100 | 94 | 88 | 96 | 90 | 85 | 88 | 84 | 80 | 64 |
| ROOM INDEX | UF(total) | | | | | | | | | Direct |
| According to DIN EN 13032-2 2004 | | | Suspended | | | | SHRNOM = 1.25 | | | |

C Range: 0 - 360DEG
 C Interval: 22.5DEG
 Test Speed: HIGH
 Temperature:25.1DEG
 Operators:Evan
 Test Date:2022-11-29

γ Range: 0 - 180DEG
 γ Interval: 1.0DEG
 Test System:EVERFINE GO-R5000_V2 SYSTEM V2.0.351
 Humidity:42%
 Test Distance:2.532m [K=1.0000]
 Remarks:

ISOCANDELA DIAGRAM

| | | |
|---|-----------|---------------------|
| Test:U:120.0V I:0.1312A P:15.45W PF:0.9812 Lamp Flux:1138 x1 lm | | |
| NAME: LED luminaires | TYPE:N/A | WEIGHT:N/A |
| SPEC.:ASD-LVF24M-3D15CC-BK 5000K | DIM.: N/A | SERIAL No.:N/A |
| MFR.: ASD Lighting corp | SUR.:N/A | Shielding Angle:N/A |

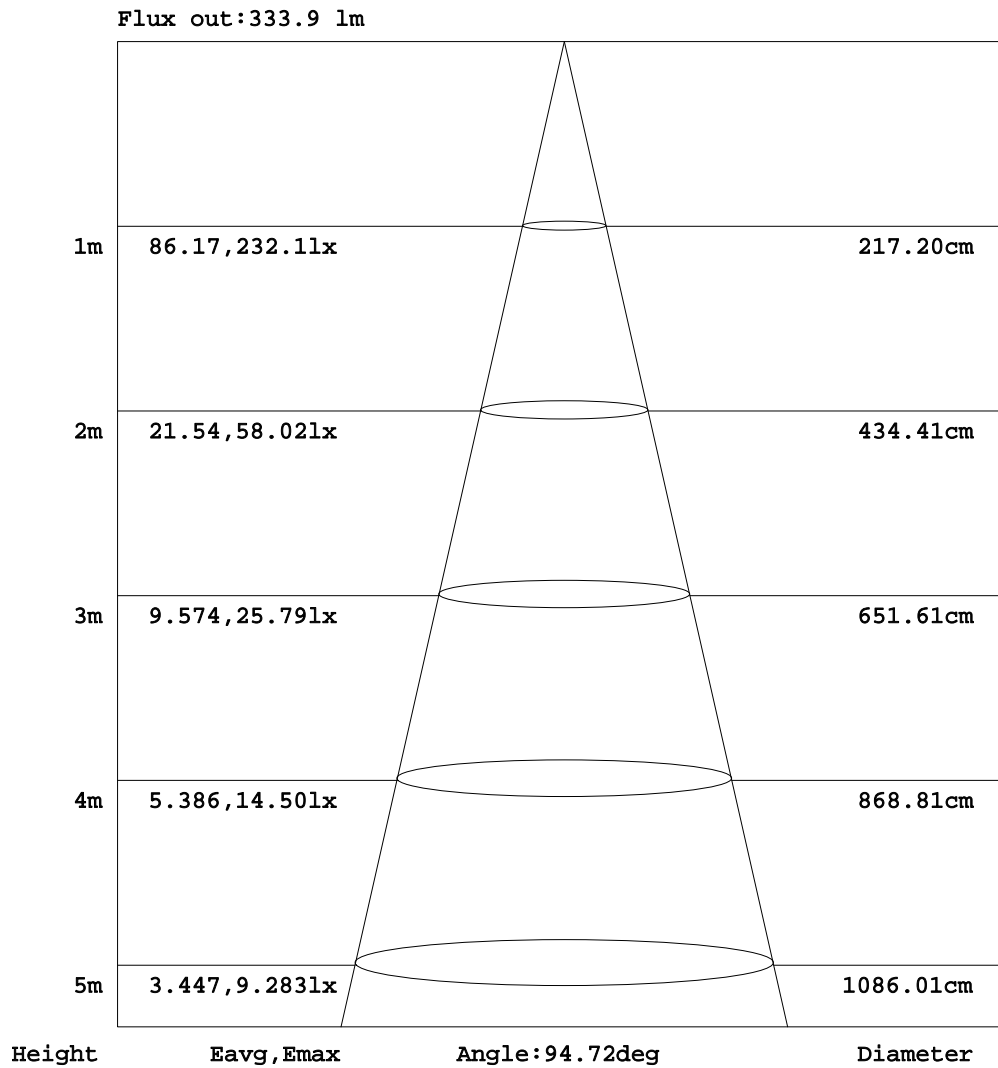


C Range: 0 - 360DEG
 C Interval: 22.5DEG
 Test Speed: HIGH
 Temperature:25.1DEG
 Operators:Evan
 Test Date:2022-11-29

γ Range: 0 - 180DEG
 γ Interval: 1.0DEG
 Test System:EVERFINE GO-R5000_V2 SYSTEM V2.0.351
 Humidity:42%
 Test Distance:2.532m [K=1.0000]
 Remarks:

AAI Figure

| | | |
|---|-----------|---------------------|
| Test:U:120.0V I:0.1312A P:15.45W PF:0.9812 Lamp Flux:1138 x1 lm | | |
| NAME: LED luminaires | TYPE:N/A | WEIGHT:N/A |
| SPEC.:ASD-LVF24M-3D15CC-BK 5000K | DIM.: N/A | SERIAL No.:N/A |
| MFR.:ASD Lighting corp | SUR.:N/A | Shielding Angle:N/A |



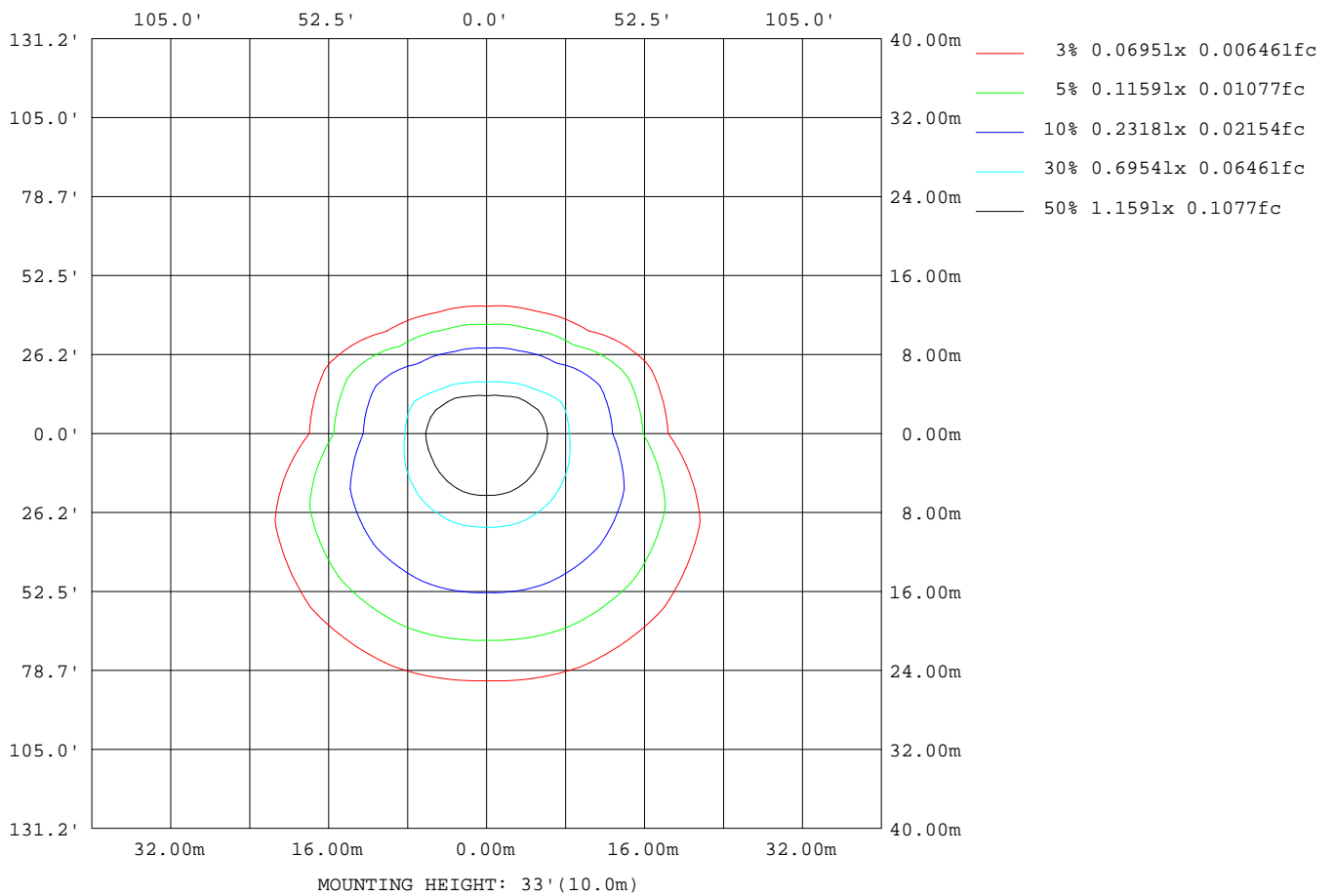
Note:The Curves indicate the illuminated area and the average illumination when the luminaire is at different distance.

C Range: 0 - 360DEG
 C Interval: 22.5DEG
 Test Speed: HIGH
 Temperature:25.1DEG
 Operators:Evan
 Test Date:2022-11-29

γ Range: 0 - 180DEG
 γ Interval: 1.0DEG
 Test System:EVERFINE GO-R5000_V2 SYSTEM V2.0.351
 Humidity:42%
 Test Distance:2.532m [K=1.0000]
 Remarks:

ISOLUX DIAGRAM

| | | |
|---|-----------|---------------------|
| Test:U:120.0V I:0.1312A P:15.45W PF:0.9812 Lamp Flux:1138 x1 lm | | |
| NAME: LED luminaires | TYPE:N/A | WEIGHT:N/A |
| SPEC.:ASD-LVF24M-3D15CC-BK 5000K | DIM.: N/A | SERIAL No.:N/A |
| MFR.: ASD Lighting corp | SUR.:N/A | Shielding Angle:N/A |



C Range: 0 - 360DEG
 C Interval: 22.5DEG
 Test Speed: HIGH
 Temperature:25.1DEG
 Operators:Evan
 Test Date:2022-11-29

γ Range: 0 - 180DEG
 γ Interval: 1.0DEG
 Test System:EVERFINE GO-R5000_V2 SYSTEM V2.0.351
 Humidity:42%
 Test Distance:2.532m [K=1.0000]
 Remarks:

LED Avg.L Report

| | | |
|---|-----------|---------------------|
| Test:U:120.0V I:0.1312A P:15.45W PF:0.9812 Lamp Flux:1138 x1 lm | | |
| NAME: LED luminaires | TYPE:N/A | WEIGHT:N/A |
| SPEC.:ASD-LVF24M-3D15CC-BK 5000K | DIM.: N/A | SERIAL No.:N/A |
| MFR.: ASD Lighting corp | SUR.:N/A | Shielding Angle:N/A |

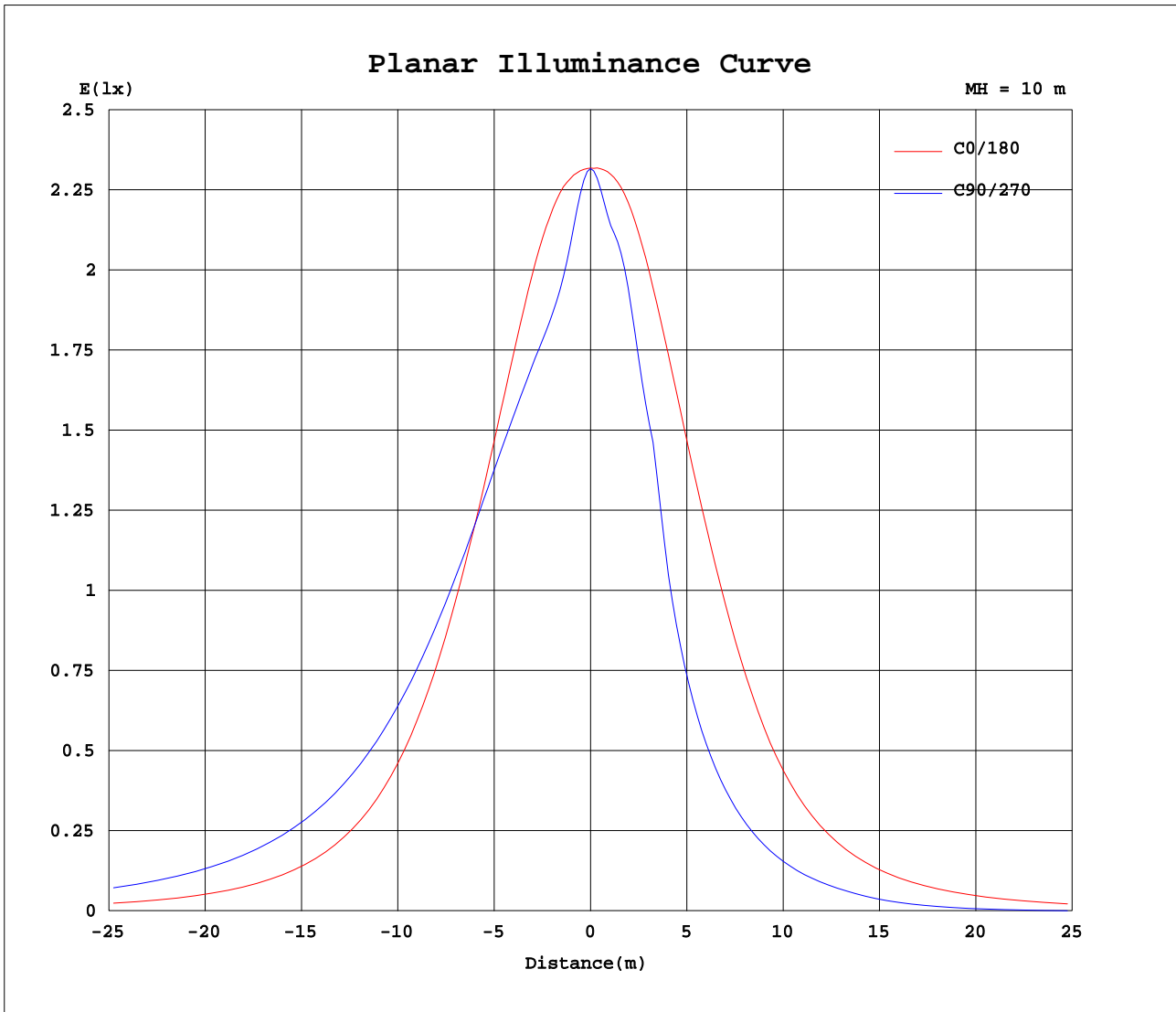
| AvgL | cd/m2 |
|----------------|-------|
| L_0~180(65)av | 1450 |
| L_0~180(75)av | 1362 |
| L_0~180(85)av | 2318 |
| L_90~270(65)av | 2113 |
| L_90~270(75)av | 2822 |
| L_90~270(85)av | 7130 |
| L_45(65)av | 2318 |
| L_45(75)av | 2928 |
| L_45(85)av | 7279 |

Standard: GB/T 29293-2012

C Range: 0 - 360DEG
C Interval: 22.5DEG
Test Speed: HIGH
Temperature:25.1DEG
Operators:Evan
Test Date:2022-11-29

γ Range: 0 - 180DEG
 γ Interval: 1.0DEG
Test System:EVERFINE GO-R5000_V2 SYSTEM V2.0.351
Humidity:42%
Test Distance:2.532m [K=1.0000]
Remarks:

Planar Illuminance Curve



C Range: 0 - 360DEG
 C Interval: 22.5DEG
 Test Speed: HIGH
 Temperature: 25.1DEG
 Operators: Evan
 Test Date: 2022-11-29

γ Range: 0 - 180DEG
 γ Interval: 1.0DEG
 Test System: EVERFINE GO-R5000_V2 SYSTEM V2.0.351
 Humidity: 42%
 Test Distance: 2.532m [K=1.0000]
 Remarks:

LUMINOUS DISTRIBUTION INTENSITY DATA

| | | |
|---|-----------|---------------------|
| Test:U:120.0V I:0.1312A P:15.45W PF:0.9812 Lamp Flux:1138 x1 lm | | |
| NAME: LED luminaires | TYPE:N/A | WEIGHT:N/A |
| SPEC.:ASD-LVF24M-3D15CC-BK 5000K | DIM.: N/A | SERIAL No.:N/A |
| MFR.: ASD Lighting corp | SUR.:N/A | Shielding Angle:N/A |

Table--1

UNIT: cd

| C(DEG) γ (DEG) | 0 | 22.5 | 45 | 67.5 | 90 | 112.5 | 135 | 157.5 | 180 | 202.5 | 225 | 247.5 | 270 | 292.5 | 315 | 337.5 | | | |
|-------------------|------|------|------|------|------|-------|------|-------|------|-------|------|-------|------|-------|------|-------|--|--|--|
| 0 | 232 | 232 | 232 | 232 | 232 | 232 | 232 | 232 | 232 | 232 | 232 | 232 | 232 | 232 | 232 | 232 | | | |
| 5 | 232 | 229 | 223 | 217 | 216 | 218 | 224 | 230 | 233 | 231 | 226 | 221 | 220 | 221 | 224 | 230 | | | |
| 10 | 232 | 222 | 208 | 201 | 199 | 202 | 210 | 225 | 234 | 227 | 219 | 214 | 210 | 212 | 217 | 224 | | | |
| 15 | 229 | 214 | 201 | 197 | 195 | 197 | 202 | 216 | 231 | 219 | 210 | 191 | 183 | 191 | 208 | 215 | | | |
| 20 | 221 | 205 | 198 | 195 | 193 | 195 | 198 | 206 | 222 | 210 | 189 | 169 | 151 | 169 | 190 | 208 | | | |
| 25 | 209 | 197 | 195 | 195 | 193 | 195 | 195 | 197 | 210 | 196 | 172 | 124 | 111 | 125 | 173 | 196 | | | |
| 30 | 194 | 188 | 192 | 194 | 192 | 194 | 191 | 188 | 194 | 179 | 132 | 96.4 | 86.7 | 97.6 | 135 | 181 | | | |
| 35 | 176 | 180 | 188 | 192 | 190 | 192 | 187 | 178 | 174 | 162 | 103 | 75.9 | 68.9 | 77.2 | 106 | 165 | | | |
| 40 | 154 | 171 | 184 | 189 | 186 | 189 | 182 | 169 | 150 | 145 | 81.0 | 60.2 | 55.0 | 61.5 | 83.5 | 151 | | | |
| 45 | 130 | 161 | 178 | 184 | 181 | 184 | 176 | 158 | 124 | 119 | 63.8 | 47.6 | 43.7 | 48.8 | 65.9 | 124 | | | |
| 50 | 107 | 151 | 172 | 178 | 174 | 177 | 169 | 148 | 100 | 95.4 | 50.2 | 37.1 | 34.2 | 38.2 | 51.8 | 100 | | | |
| 55 | 86.4 | 140 | 164 | 170 | 165 | 169 | 162 | 137 | 79.9 | 74.9 | 39.0 | 27.6 | 24.1 | 28.6 | 40.2 | 79.1 | | | |
| 60 | 68.4 | 130 | 155 | 160 | 154 | 160 | 153 | 126 | 62.9 | 58.9 | 29.3 | 16.3 | 13.7 | 17.5 | 30.3 | 61.9 | | | |
| 65 | 53.2 | 119 | 146 | 150 | 144 | 149 | 143 | 116 | 48.8 | 46.3 | 17.9 | 6.95 | 5.05 | 7.90 | 19.2 | 48.5 | | | |
| 70 | 40.8 | 108 | 135 | 139 | 132 | 139 | 133 | 105 | 37.1 | 35.9 | 7.96 | 0.15 | 0.10 | 0.56 | 8.84 | 37.5 | | | |
| 75 | 30.5 | 97.6 | 125 | 129 | 121 | 128 | 123 | 94.6 | 28.2 | 24.8 | 2.52 | 0.11 | 0.12 | 0.12 | 1.54 | 26.9 | | | |
| 80 | 22.6 | 87.1 | 115 | 118 | 111 | 117 | 113 | 84.1 | 21.8 | 16.0 | 2.14 | 0.13 | 0.13 | 0.13 | 1.17 | 16.6 | | | |
| 85 | 17.0 | 76.9 | 105 | 110 | 103 | 109 | 104 | 74.4 | 16.6 | 12.0 | 1.57 | 0.15 | 0.16 | 0.16 | 0.85 | 10.5 | | | |
| 90 | 12.5 | 69.3 | 98.1 | 103 | 97.4 | 103 | 97.3 | 67.7 | 13.7 | 7.05 | 1.19 | 0.17 | 0.18 | 0.18 | 0.74 | 6.85 | | | |
| 95 | 11.9 | 62.9 | 91.7 | 97.4 | 92.0 | 97.1 | 90.9 | 61.5 | 12.8 | 7.70 | 1.12 | 0.19 | 0.20 | 0.20 | 0.75 | 7.37 | | | |
| 100 | 11.2 | 56.8 | 85.4 | 91.8 | 87.0 | 91.4 | 84.7 | 55.7 | 11.7 | 7.39 | 1.01 | 0.19 | 0.20 | 0.20 | 0.71 | 7.01 | | | |
| 105 | 10.3 | 51.0 | 79.2 | 86.3 | 82.2 | 86.0 | 78.5 | 50.1 | 10.5 | 7.22 | 0.85 | 0.17 | 0.18 | 0.18 | 0.62 | 6.99 | | | |
| 110 | 9.62 | 45.3 | 73.0 | 80.7 | 77.6 | 80.3 | 72.5 | 44.5 | 9.57 | 7.96 | 0.65 | 0.15 | 0.16 | 0.16 | 0.53 | 7.64 | | | |
| 115 | 8.69 | 39.7 | 66.8 | 75.1 | 72.5 | 74.7 | 66.3 | 39.2 | 8.63 | 7.83 | 0.53 | 0.14 | 0.14 | 0.14 | 0.40 | 7.48 | | | |
| 120 | 8.19 | 34.5 | 60.1 | 68.9 | 67.3 | 68.6 | 59.7 | 34.2 | 8.22 | 7.01 | 0.38 | 0.13 | 0.13 | 0.13 | 0.27 | 6.72 | | | |
| 125 | 8.22 | 29.6 | 53.7 | 62.4 | 61.3 | 62.0 | 53.2 | 29.5 | 8.59 | 6.61 | 0.17 | 0.13 | 0.13 | 0.14 | 0.18 | 6.23 | | | |
| 130 | 8.58 | 24.8 | 47.0 | 55.5 | 55.2 | 55.2 | 46.7 | 24.7 | 8.84 | 6.46 | 0.12 | 0.13 | 0.13 | 0.14 | 0.14 | 6.12 | | | |
| 135 | 8.77 | 19.9 | 40.2 | 48.5 | 48.5 | 48.0 | 39.9 | 19.9 | 8.94 | 6.30 | 0.13 | 0.13 | 0.13 | 0.13 | 0.14 | 6.02 | | | |
| 140 | 8.82 | 15.4 | 33.3 | 41.0 | 41.5 | 40.6 | 33.0 | 15.4 | 8.89 | 6.16 | 0.26 | 0.13 | 0.13 | 0.14 | 0.18 | 5.66 | | | |
| 145 | 8.74 | 11.5 | 26.4 | 33.3 | 34.1 | 33.0 | 26.1 | 11.6 | 8.72 | 6.25 | 0.54 | 0.14 | 0.14 | 0.15 | 0.30 | 4.95 | | | |
| 150 | 8.53 | 8.54 | 19.5 | 25.5 | 26.5 | 25.2 | 19.3 | 8.62 | 8.44 | 6.62 | 0.93 | 0.21 | 0.16 | 0.16 | 0.57 | 3.84 | | | |
| 155 | 8.11 | 6.78 | 12.8 | 17.7 | 18.8 | 17.5 | 12.7 | 6.57 | 7.72 | 6.89 | 1.45 | 0.37 | 0.18 | 0.20 | 0.45 | 2.31 | | | |
| 160 | 6.32 | 5.05 | 6.73 | 10.3 | 11.4 | 10.1 | 6.63 | 4.08 | 5.75 | 5.83 | 2.49 | 0.75 | 0.22 | 0.21 | 0.58 | 1.46 | | | |
| 165 | 4.29 | 3.54 | 2.54 | 3.65 | 4.39 | 3.59 | 2.24 | 3.29 | 3.36 | 3.64 | 2.71 | 0.97 | 0.29 | 0.24 | 0.58 | 1.01 | | | |
| 170 | 1.41 | 2.06 | 1.38 | 0.79 | 0.50 | 0.68 | 1.21 | 1.83 | 0.99 | 1.00 | 0.77 | 0.37 | 0.25 | 0.26 | 0.28 | 0.53 | | | |
| 175 | 0.50 | 0.48 | 0.68 | 0.53 | 0.42 | 0.45 | 0.41 | 0.42 | 0.33 | 0.34 | 0.31 | 0.29 | 0.29 | 0.29 | 0.30 | 0.30 | | | |
| 180 | 0.32 | 0.33 | 0.34 | 0.33 | 0.35 | 0.35 | 0.35 | 0.34 | 0.33 | 0.33 | 0.33 | 0.34 | 0.35 | 0.34 | 0.35 | 0.35 | | | |

C Range: 0 - 360DEG
 C Interval: 22.5DEG
 Test Speed: HIGH
 Temperature:25.1DEG
 Operators:Evan
 Test Date:2022-11-29

γ Range: 0 - 180DEG
 γ Interval: 1.0DEG
 Test System:EVERFINE GO-R5000_V2 SYSTEM V2.0.351
 Humidity:42%
 Test Distance:2.532m [K=1.0000]
 Remarks: