



# ROUND OUTDOOR WALL CYLINDER

► **DESIGN & OPTIONS** - ROUND OUTDOOR WALL CYLINDER has a modern design with effective up/down illumination. This E26 base fixture is made from die-cast aluminum and a tempered glass cover. It is a durable lighting fixture that is highly resistant to rust, making it perfect for a variety of applications. The high quality reflector creates a 50° beam angle. It comes in four finish options: BLACK, BRONZE, WHITE, and STAINLESS STEEL.



**Models with a built-in PC** automatically turn on/off depending on the time of day.

► **INSTALLATION** - Installation is quick and easy: just attach the mounting plate to the J-box with screws, connect the wires, and fasten the fixture to the mounting plate. Waterproof gaskets, decorative nuts and all necessary installation accessories are provided. For your convenience, remove the glass cover and screw in a light bulb before installing. We recommend using LED A19 9W E26 ASD or you can use incandescent bulbs (60W max). Refer to install instructions for detailed steps.

► **APPLICATION** - This ROUND OUTDOOR WALL CYLINDER creates a cozy ambience that is great for indoor and outdoor projects such as decks, front doors, porches, patios, gardens, corridors, balconies, villas, and walkways. The fixture is Wet location rated and suitable for severe weather conditions.

► **ENERGY SAVING & EFFICIENCY** - This fixture is designed to support all kinds of bulbs with E26 sockets, but we strongly recommend using an LED bulb, not only for the high-quality lighting, but also for the appreciable savings.

► **CERTIFICATION & WARRANTY** - Buy with confidence: ASD provides a 5-year warranty along with ETL certification to guarantee top quality products and safety!

Catalog number	
Notes	
Type	



AVAILABLE

Finish:	White	Bronze
	Steel	Black

## ROUND OUTDOOR WALL CYLINDER:

Model	Number of lights	Bulb Type	Finish	Dimensions (LxWxH)	Options
ASD-OCL-11-2660-BK	1 light	E26 60W max	Black	4 3/8" x 6 3/8" x 7 7/8"	-
ASD-OCL-11-2660-BZ	1 light	E26 60W max	Oil Rubbed Bronze	4 3/8" x 6 3/8" x 7 7/8"	-
ASD-OCL-11-2660-WH	1 light	E26 60W max	White	4 3/8" x 6 3/8" x 7 7/8"	-
ASD-OCL-11-2660-SS	1 light	E26 60W max	Stainless Steel	4 3/8" x 6 3/8" x 7 7/8"	-
ASD-OCL-21-2660-BK	2 light	E26 60W max	Black	4 3/8" x 6 3/8" x 11 13/16"	-
ASD-OCL-21-2660-BZ	2 light	E26 60W max	Oil Rubbed Bronze	4 3/8" x 6 3/8" x 11 13/16"	-
ASD-OCL-21-2660-WH	2 light	E26 60W max	White	4 3/8" x 6 3/8" x 11 13/16"	-
ASD-OCL-21-2660-SS	2 light	E26 60W max	Stainless Steel	4 3/8" x 6 3/8" x 11 13/16"	-
<b>OCL-PC WITH PHOTOCELL</b>					
ASD-OCL-11-2660-PC-BK	1 light	E26 60W max	Black	4 3/8" x 6 3/8" x 7 7/8"	PhotoCell
ASD-OCL-21-2660-PC-BK	2 light	E26 40W max	Black	4 3/8" x 6 3/8" x 11 13/16"	PhotoCell

## ORDERING INFORMATION

### ROUND OUTDOOR WALL CYLINDER:

Model	UPC	Pcs. per Carton	Carton Size	Carton Weight	GTIN 14 for Carton
ASD-OCL-11-2660-BK	810050730594	6	16.7" x 15.4" x 9.6"	16.7 lb	30810050730595
ASD-OCL-11-2660-BZ	810050730600	6	16.7" x 15.4" x 9.6"	16.7 lb	30810050730601
ASD-OCL-11-2660-WH	810050730617	6	16.7" x 15.4" x 9.6"	16.7 lb	30810050730618
ASD-OCL-11-2660-SS	810050730624	6	16.7" x 15.4" x 9.6"	16.7 lb	30810050730625
ASD-OCL-21-2660-BK	810050730631	6	16.7" x 15.4" x 13.6"	19.7 lb	30810050730632
ASD-OCL-21-2660-BZ	810050730648	6	16.7" x 15.4" x 13.6"	19.7 lb	30810050730649
ASD-OCL-21-2660-WH	810050730655	6	16.7" x 15.4" x 13.6"	19.7 lb	30810050730656
ASD-OCL-21-2660-SS	810050730662	6	16.7" x 15.4" x 13.6"	19.7 lb	30810050730663
<b>OCL-PC WITH PHOTOCELL</b>					
ASD-OCL-11-2660-PC-BK	810050736831	6	16.7" x 15.4" x 9.6"	16.7 lb	30810050736832
ASD-OCL-21-2660-PC-BK	810050736848	6	16.7" x 15.4" x 13.6"	19.7 lb	30810050736849

For most up-to-date spec sheets please refer to [asd-lighting.com](http://asd-lighting.com)

**ASD LIGHTING CORP**

E-mail: [orders@asd-lighting.com](mailto:orders@asd-lighting.com) | Web site: [www.asd-lighting.com](http://www.asd-lighting.com)





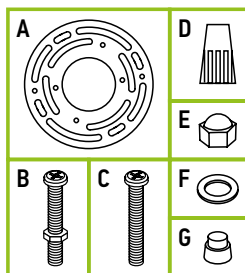
# ROUND OUTDOOR WALL CYLINDER

## PRODUCT SPECIFICATIONS:

Construction & Materials		
Housing	Aluminum	
Lens	Glass	
Finish Color	White, Stainless Steel, Oil Rubbed Bronze, Black	
Weight	ASD-OCL-11-2660-BK	
	ASD-OCL-11-2660-BZ	1.9 lb (0.9 kg)
	ASD-OCL-11-2660-WH	
	ASD-OCL-11-2660-SS	
	ASD-OCL-21-2660-BK	
	ASD-OCL-21-2660-BZ	2.5 lb (1.2 kg)
	ASD-OCL-21-2660-WH	
	ASD-OCL-21-2660-SS	
ASD-OCL-11-2660-PC-BK	1.9 lb (0.9 kg)	
	ASD-OCL-21-2660-PC-BK	2.5 lb (1.2 kg)
Environmental System		
Work Environment	Suitable for Wet Locations	
Operating Temperature	-40°F to 113°F (-40°C to 45°C)	
	for model with photocell: -4°F to 113°F (-20°C to 45°C)	
Electrical System		
Input Voltage	120 V	
Light Source Type	Incandescent/LED/CFL bulb	
Bulb Base Type	E26 Medium	
Maximum Bulb Wattage	60W	
	for model ASD-OCL-21-2660-PC-BK: 40W	
Maximum Wattage	ASD-OCL-11-2660-BK	
	ASD-OCL-11-2660-BZ	60W
	ASD-OCL-11-2660-WH	
	ASD-OCL-11-2660-SS	
	ASD-OCL-21-2660-BK	
	ASD-OCL-21-2660-BZ	120W
	ASD-OCL-21-2660-WH	
	ASD-OCL-21-2660-SS	
ASD-OCL-11-2660-PC-BK	60W	
ASD-OCL-21-2660-PC-BK	80W	
Surge protection DM/CM	1.25 kV / 1.25 kV	
Regular and Voluntary Certifications		
5-year limited warranty		
ETL certified 4001256		

## PACKAGE CONTENTS:

Description	Q-ty
Round Outdoor Wall Cylinder	1
Mounting plate (A)	1
Mounting screw (B)	2
Outlet box screw (C)	2
Wire nut (D)	3
Decorative nut (E)	2
Waterproof gasket (F)	2
Photocell cap (G) (only for PC models)	1
Box	1
Cut sheet	2



## BUILT-IN PHOTOCCELL INFORMATION

The dusk-to-dawn sensor automatically turns the fixture off during daylight hours.

Specifications	Model MD_EP-120R
Input Power	120 VAC, 60HZ
Light level to turn ON	30 ~ 150 Lux (2.8 - 14 Fc)
Light level to turn OFF	200 ~ 800 Lux (18.6 - 74.4Fc)
Operating temperature	-4°F to 122°F (-20°C to 50°C)

## INSTALLATION GUIDE

### IMPORTANT SAFETY INFORMATION:

Please read all the instructions below before installation.

- ▶ Make sure that the supply voltage corresponds to the rated product voltage.
- ▶ The product must be installed by a qualified electrician in accordance with the National Electrical Code and corresponding local codes.
- ▶ If the product is damaged, do not use it.

### ⚠ WARNING

**RISK OF PERSONAL INJURY – READ and follow all WARNINGS and installation instructions.**

Keep or give to the owner for future reference.

**Risk of cuts:** Wear gloves to prevent cuts or abrasions when removing from carton, handling, installing, and maintaining this product.

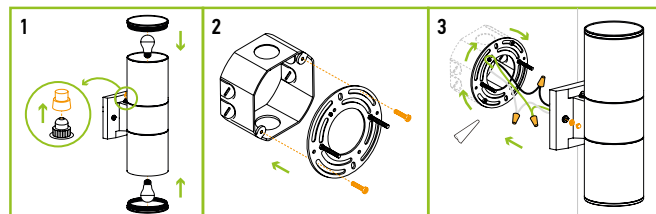
**Risk of electric shock:** This product must be installed in accordance with the applicable installation code by a person familiar with the construction and operation of the product and the hazards involved.

**Risk of Fire:** Minimum 194°F supply conductors. Consult a qualified electrician to ensure correct branch circuit conductor.

ASD® assumes no responsibility for claims arising out of improper or careless installation or handling of this product.

### INSTALLATION STEPS:

1. Remove the glass cover and install the bulbs (A19/60W max). In models with photocell option remove the photocell cap to make the dusk-to-dawn sensor operate.
2. Screw the two mounting screws onto the mounting plate. Attach the mounting plate to the outlet box using the screws. Make sure the threads of the mounting screws are facing outside when the mounting plate is attached to the outlet box.
3. Connect the wires: Black to Black, White to White, Ground to Ground. Secure the connection with wire nuts. Place the fixture base on the wall by aligning the protruding mounting screws through the holes on the wall plate. Put the waterproof gasket on each mounting screw. Tighten the fixture to the wall using two decorative nuts. For outdoor locations please use silicone (not included) shown in the picture below.



For most up-to-date spec sheets please refer to [asd-lighting.com](http://asd-lighting.com)