



LED OUTDOOR WALL SCNCE

LWS27 series

► **DESIGN** - LED OUTDOOR WALL SCNCE has a modern, multipurpose design and a stylish look with efficient lighting. Durable housing resistant to rust and impact provides many years of service. The acrylic lens with a 350° beam angle grants you even light distribution. It is designed to operate on 120-277V circuits and provides smooth triac dimming capabilities ranging from 10% to 100%.

► **COLOR SELECTABLE** - You can choose either a 3,000K warm white, 4,000K cool white or 5,000K daylight color temperature.

► **INSTALLATION** - Quick and easy installation, the fixture can be installed on standard 2.75" or 3.5" outlet box. The additional mounting holes provide secure installation options.

► **APPLICATION** - The fixture is rated for Wet Locations, making it perfect for indoor and outdoor projects such as decks, front doors, porches, patios, corridors, walkways, or any other common areas.

► **ADVANTAGES** - With a lifespan of 50,000 hours, these fixtures are made to last decades under normal operation! ASD provides a 5-year limited warranty along with ETL certification to guarantee top quality products and safety!



Finish: White Black

PRODUCT PRESENTATION:

Model	Size	Power	Voltage	Dimming	Lumens	CCT	Finish	Dimensions	Certification
ASD-LWS27-18D18CC-WH	18 inch	18W	120 V	TRIAC	up to 1,541 lm	3CCT (3,000/4,000/5,000 K)	White	18" x 5-7/8" x 1-13/16"	ETL (4001256)
ASD-LWS27-MV-18D18CC-BK	18 inch	18W	120-277 V	TRIAC	up to 1,636 lm	3CCT (3,000/4,000/5,000 K)	Black	18" x 5-7/8" x 1-13/16"	ETL (4001256)
ASD-LWS27A-18D18BK	18 inch	18W	120-277 V	TRIAC	up to 1,573 lm	3CCT (3,000/4,000/5,000 K)	Black	18" x 5-7/8" x 1-13/16"	ETL (4001256)
ASD-LWS27-24D24CC-WH	24 inch	24W	120 V	TRIAC	up to 2,204 lm	3CCT (3,000/4,000/5,000 K)	White	24" x 5-7/8" x 1-13/16"	ETL (4001256)
ASD-LWS27-MV-24D24CC-BK	24 inch	24W	120-277 V	TRIAC	up to 2,134 lm	3CCT (3,000/4,000/5,000 K)	Black	24" x 5-7/8" x 1-13/16"	ETL (4001256)
ASD-LWS27A-24D24BK	24 inch	24W	120-277 V	TRIAC	up to 2,001 lm	3CCT (3,000/4,000/5,000 K)	Black	24" x 5-7/8" x 1-13/16"	ETL (4001256)
ASD-LWS27-36D30CC-WH	36 inch	30W	120 V	TRIAC	up to 2,465 lm	3CCT (3,000/4,000/5,000 K)	White	36" x 5-7/8" x 1-13/16"	ETL (4001256)
ASD-LWS27-MV-36D30CC-BK	36 inch	30W	120-277 V	TRIAC	up to 2,642 lm	3CCT (3,000/4,000/5,000 K)	Black	36" x 5-7/8" x 1-13/16"	ETL (4001256)
ASD-LWS27A-36D30BK	36 inch	30W	120-277 V	TRIAC	up to 2,356 lm	3CCT (3,000/4,000/5,000 K)	Black	36" x 5-7/8" x 1-13/16"	ETL (4001256)
ASD-LWS27-48D36CC-WH	48 inch	36W	120 V	TRIAC	up to 2,844 lm	3CCT (3,000/4,000/5,000 K)	White	48-1/16" x 5-7/8" x 1-13/16"	ETL (4001256)
ASD-LWS27-MV-48D36CC-BK	48 inch	36W	120-277 V	TRIAC	up to 2,933 lm	3CCT (3,000/4,000/5,000 K)	Black	48-1/16" x 5-7/8" x 1-13/16"	ETL (4001256)
ASD-LWS27A-48D36BK	48 inch	36W	120-277 V	TRIAC	up to 2,980 lm	3CCT (3,000/4,000/5,000 K)	Black	48" x 5-7/8" x 1-13/16"	ETL (4001256)
ASD-LWS27-MV-72D40CC-BK	72 inch	40W	120-277 V	TRIAC	up to 3,541 lm	3CCT (3,000/4,000/5,000 K)	Black	72" x 5-7/8" x 1-13/16"	ETL (4001256)
ASD-LWS27A-72D40BK	72 inch	40W	120-277 V	TRIAC	up to 3,620 lm	3CCT (3,000/4,000/5,000 K)	Black	72" x 5-7/8" x 1-13/16"	ETL (4001256)

For most up-to-date spec sheets please refer to asd-lighting.com



LED OUTDOOR WALL SCENCE

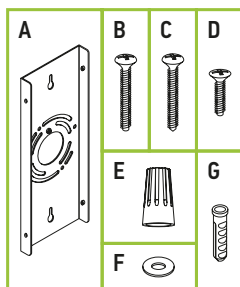
LWS27 series

TECHNICAL PARAMETERS:

Model	Work environment	Operating temperature	Power factor	Surge protection	Housing	Lens	CRI
ASD-LWS27-18D18CC-WH	Wet location	-40°F to 113°F (-40°C to 45°C)	> 0,9	1,25 kV	Steel	Acrylic	> 80
ASD-LWS27-MV-18D18CC-BK	Wet location	-40°F to 113°F (-40°C to 45°C)	> 0,9	1,25 kV	Steel	Acrylic	> 80
ASD-LWS27A-18D18BK	Wet location	-40°F to 113°F (-40°C to 45°C)	> 0,9	1,25 kV	Steel	Acrylic	> 80
ASD-LWS27-24D24CC-WH	Wet location	-40°F to 113°F (-40°C to 45°C)	> 0,9	1,25 kV	Steel	Acrylic	> 80
ASD-LWS27-MV-24D24CC-BK	Wet location	-40°F to 113°F (-40°C to 45°C)	> 0,9	1,25 kV	Steel	Acrylic	> 80
ASD-LWS27A-24D24BK	Wet location	-40°F to 113°F (-40°C to 45°C)	> 0,9	1,25 kV	Steel	Acrylic	> 80
ASD-LWS27-36D30CC-WH	Wet location	-40°F to 113°F (-40°C to 45°C)	> 0,9	1,25 kV	Steel	Acrylic	> 80
ASD-LWS27-MV-36D30CC-BK	Wet location	-40°F to 113°F (-40°C to 45°C)	> 0,9	1,25 kV	Steel	Acrylic	> 80
ASD-LWS27A-36D30BK	Wet location	-40°F to 113°F (-40°C to 45°C)	> 0,9	1,25 kV	Steel	Acrylic	> 80
ASD-LWS27-48D36CC-WH	Wet location	-40°F to 113°F (-40°C to 45°C)	> 0,9	1,25 kV	Steel	Acrylic	> 80
ASD-LWS27-MV-48D36CC-BK	Wet location	-40°F to 113°F (-40°C to 45°C)	> 0,9	1,25 kV	Steel	Acrylic	> 80
ASD-LWS27A-48D36BK	Wet location	-40°F to 113°F (-40°C to 45°C)	> 0,9	1,25 kV	Steel	Acrylic	> 80
ASD-LWS27-MV-72D40CC-BK	Wet location	-40°F to 113°F (-40°C to 45°C)	> 0,9	1,25 kV	Steel	Acrylic	> 80
ASD-LWS27A-72D40BK	Wet location	-40°F to 113°F (-40°C to 45°C)	> 0,9	1,25 kV	Steel	Acrylic	> 80

PACKAGE CONTENTS:

Description	Quantity
LED Outdoor Wall Sconce Wide Acrylic	1
Mounting plate (A)	1
Mounting screw (B)	2
Self-tapping screw (C)	2
Fixture screw (D)	4 (6 for 72")
Wire nut (E)	3
Waterproof gasket (F)	4 (6 for 72")
Anchor (G)	2
Box	1



DIMMING COMPATIBLE CONTROLS:

Brand	Lutron	Leviton
Models	MACL-153MLH-WH	R02-DW6HD-2RW
	STCL-153PH-WH	R00-RNL06-0TW
	PD-6WCL-WH-R	R68-06674-POT
	DVCL-153PR	DSL06
	P-PKG1W	

INSTALLATION GUIDE

IMPORTANT SAFETY INFORMATION:

Please read all the instructions below before installation!

- ▶ Make sure that the supply voltage corresponds to the rated product voltage.
- ▶ The product must be installed by a qualified electrician in accordance with the National Electrical Code and corresponding local codes.
- ▶ If the product is damaged, do not use it.

⚠ WARNING

Risk of personal injury – read and follow all warnings and installation instructions. Keep or give to the owner for future reference.

Risk of cuts: Wear gloves to prevent cuts or abrasions when removing from carton, handling, installing, and maintaining this product.

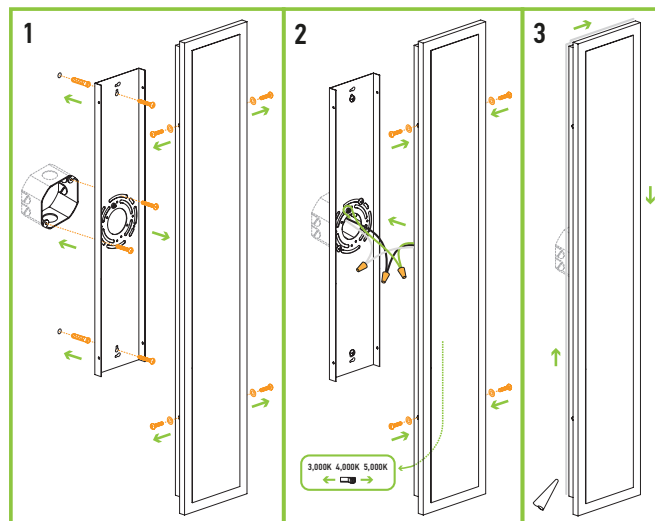
Risk of electric shock: This product must be installed in accordance with the applicable installation code by a person familiar with the construction and operation of the product and the hazards involved.

Risk of Fire: Minimum 194°F supply conductors. Consult a qualified electrician to ensure correct branch circuit conductor.

ASD® assumes no responsibility for claims arising out of improper or careless installation or handling of this product.

INSTALLATION STEPS:

1. Remove the lens from the fixture body.
2. Attach the crossbar to the outlet box using mounting screws. Place the fixture body over the outlet box onto the mounting nipple and adjust it by tightening inward or out from the mounting bracket. Secure the fixture body position with cap nut. Connect the wires: Black to Black, White to White, Green to Green. Secure the connection with wire nuts.
3. Reattach the lens to the fixture body using 4 screws. For outdoor locations please use silicone (not included) shown in the picture below.



For most up-to-date spec sheets please refer to asd-lighting.com

ASD LIGHTING CORP

E-mail: orders@asd-lighting.com | Web site: www.asd-lighting.com





LED OUTDOOR WALL SCNCE

LWS27 series

ORDERING INFORMATION

Model	Product dimensions	Weight	Pcs. per carton	Carton size	Carton weight	UPC	GTIN 14
ASD-LWS27-18D18CC-WH	18" x 5-7/8" x 1-13/16"	5.4 lbs (2.4 kg)	4	23.6" x 18.5" x 9.8"	28 lbs	810050738088	10810050738085
ASD-LWS27-MV-18D18CC-BK	18" x 5-7/8" x 1-13/16"	5.4 lbs (2.4 kg)	4	23.6" x 18.5" x 9.8"	28 lbs	810128110495	10810128110492
ASD-LWS27A-18D18BK	18" x 5-7/8" x 1-13/16"	5.1 lbs (2.3 kg)	2	23.6" x 9.5" x 9.8"	11.5 lbs	810128112932	10810128112939
ASD-LWS27-24D24CC-WH	24" x 5-7/8" x 1-13/16"	6.9 lbs (3.1 kg)	4	29.5" x 18.5" x 9.8"	34.8 lbs	810050738101	10810050738108
ASD-LWS27-MV-24D24CC-BK	24" x 5-7/8" x 1-13/16"	6.9 lbs (3.1 kg)	4	29.5" x 18.5" x 9.8"	34.8 lbs	810128110501	10810128110508
ASD-LWS27A-24D24BK	24" x 5-7/8" x 1-13/16"	6.9 lbs (3.1 kg)	2	29.5" x 9.5" x 9.8"	15 lbs	810128112949	10810128112946
ASD-LWS27-36D30CC-WH	36" x 5-7/8" x 1-13/16"	11 lbs (5 kg)	2	41.5" x 9.5" x 9.8"	26.7 lbs	810050738125	20810050738129
ASD-LWS27-MV-36D30CC-BK	36" x 5-7/8" x 1-13/16"	11 lbs (5 kg)	2	41.5" x 9.5" x 9.8"	26.7 lbs	810128110518	10810128110515
ASD-LWS27A-36D30BK	36" x 5-7/8" x 1-13/16"	10.1 lbs (4.6 kg)	2	41.5" x 9.5" x 9.8"	24.3 lbs	810128112956	10810128112953
ASD-LWS27-48D36CC-WH	48-1/16" x 5-7/8" x 1-13/16"	14.5 lbs (6.6 kg)	2	53.5" x 9.5" x 9.8"	35 lbs	810050738149	20810050738143
ASD-LWS27-MV-48D36CC-BK	48-1/16" x 5-7/8" x 1-13/16"	14.5 lbs (6.6 kg)	2	53.5" x 9.5" x 9.8"	35 lbs	810128110525	10810128110522
ASD-LWS27A-48D36BK	48" x 5-7/8" x 1-13/16"	13.7 lbs (6.2 kg)	1	52.8" x 8.7" x 4.3"	15.6 lbs	810128112963	-
ASD-LWS27-MV-72D40CC-BK	72" x 5-7/8" x 1-13/16"	24.9 lbs (11.3 kg)	1	76.8" x 8.7" x 4.3"	20.9 lbs	810128110709	-
ASD-LWS27A-72D40BK	72" x 5-7/8" x 1-13/16"	21.6 lbs (9.8 kg)	1	76.8" x 8.7" x 4.3"	24.3 lbs	810128114196	-

For most up-to-date spec sheets please refer to asd-lighting.com

ASD LIGHTING CORP

E-mail: orders@asd-lighting.com | Web site: www.asd-lighting.com

