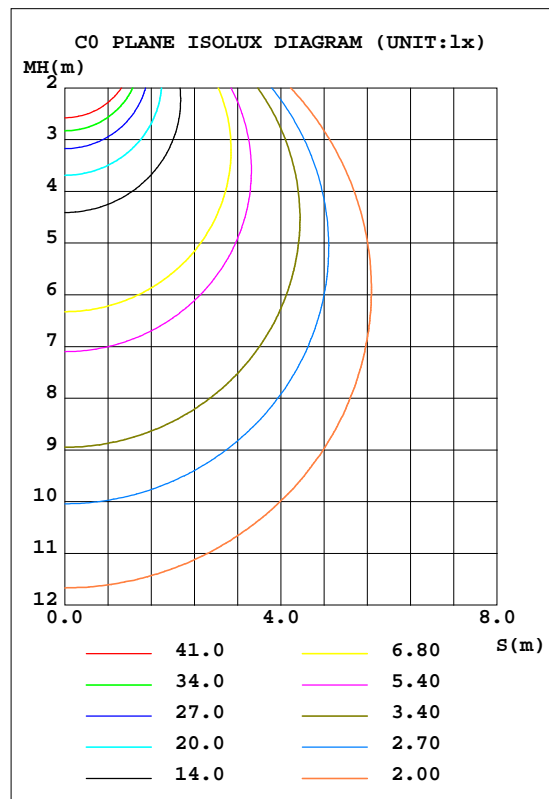
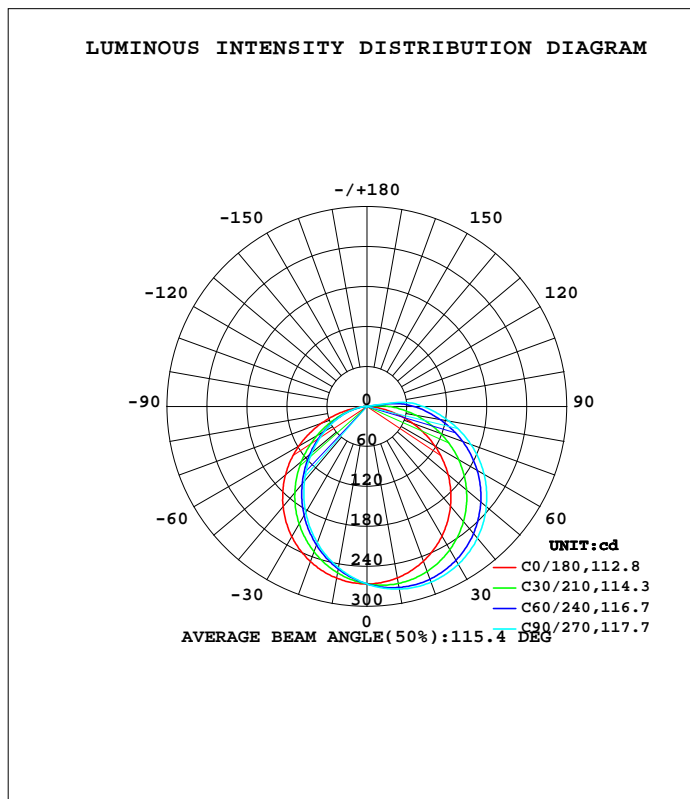


LUMINAIRE PHOTOMETRIC TEST REPORT

Test:U:120.12V I:0.1022A P:11.676W PF:0.9511 Freq:59.98Hz Lamp Flux:822x1 lm		
NAME: ASD-UCBS-24N12CC-WH-5000K	TYPE:	WEIGHT:
SPEC.:	DIM.:	SERIAL No.:
MFR.: ASD Lighting Corp	SUR.:	Shielding Angle:

DATA OF LAMP		PHOTOMETRIC DATA Eff: 70.40 lm/W			
ASD-UCBS-24N12CC-WH-5000K		I _{max} (cd)	281.1	S/MH(C0/180)	1.38
NOMINAL POWER(W)	12	LOR(%)	100.0	S/MH(C90/270)	1.18
RATED VOLTAGE(V)	120	TOTAL FLUX(lm)	822	h UP, DN(C0-180)	2.1,61.8
NOMINAL FLUX(lm)	822	CIE CLASS	DIRECT	h UP, DN(C180-360)	0.2,35.9
LAMPS INSIDE	1	h up(%)	2.3	CIBSE SHR NOM	1.25
TEST VOLTAGE(V)	120	h down(%)	97.7	CIBSE SHR MAX	1.35



C Range: 0 - 360DEG
 C Interval: 15.0DEG
 Test Speed: HIGH
 Temperature:25.3DEG
 Operators:LiuLiwen
 Test Date:2022-12-02

g Range: 0 - 180DEG
 g Interval: 0.5DEG
 Test System:EVERFINE GO-SPEX500_V1 SYSTEM V2.0.402
 Humidity:65.0%
 Test Distance:3.010m [K=1.0000]
 Remarks:

ZONAL FLUX DIAGRAM

ZONAL FLUX DIAGRAM:

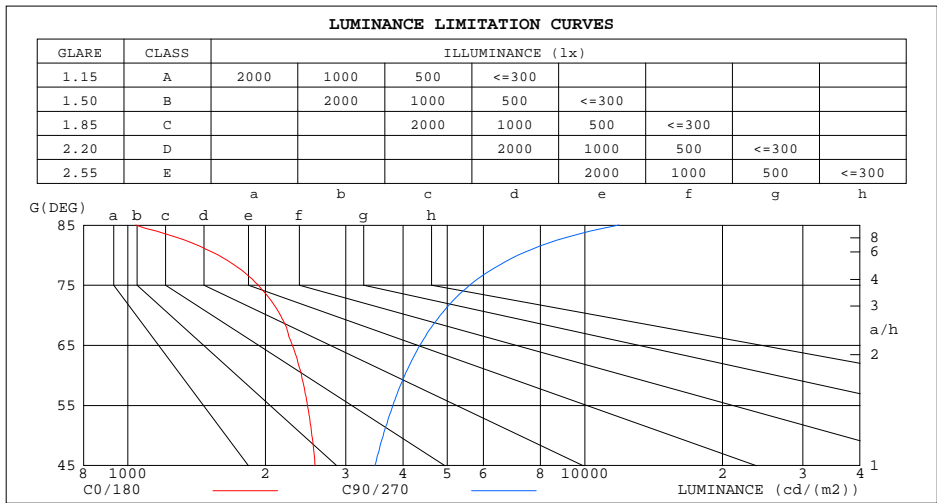
g	C0	C45	C90	C135	C180	C225	C270	C315	g	F zone	F total	%lamp
10	261.4	273.1	278.3	273.5	261.6	250.2	245.8	250.0	0- 10	25.20	25.20	2.95
20	247.3	270.8	280.6	271.1	247.9	226.0	217.9	225.9	10- 20	72.28	97.48	11.4
30	225.0	258.9	273.7	259.5	225.6	194.6	184.0	194.7	20- 30	110.0	207.5	24.3
40	195.3	238.9	258.0	239.5	196.0	157.7	146.4	158.0	30- 40	133.7	341.1	39.9
50	159.0	211.4	234.0	212.0	159.8	117.7	108.4	118.3	40- 50	140.7	481.9	56.4
60	117.3	177.7	202.9	178.1	117.8	78.42	72.36	79.15	50- 60	131.2	613.1	71.7
70	72.19	138.3	165.9	138.6	71.52	42.35	40.49	43.13	60- 70	107.4	720.5	84.3
80	26.82	95.20	124.6	95.48	25.74	14.47	15.41	15.04	70- 80	73.93	794.4	92.9
90	0.3732	55.04	84.82	55.54	0.2175	0.5078	0.8770	0.7094	80- 90	40.57	834.9	97.7
100	0.4053	0.5392	14.50	0.3334	0.3256	0.7361	0.9226	0.7238	90-100	16.52	851.5	99.6
110	0.4902	0.4148	0.4088	0.4023	0.4029	0.7675	0.9993	0.7563	100-110	0.8312	852.3	99.7
120	0.5458	0.4900	0.4904	0.4676	0.4441	0.7290	0.9676	0.7165	110-120	0.5834	852.9	99.8
130	0.5623	0.5399	0.5390	0.5097	0.4633	0.6758	0.8191	0.6650	120-130	0.5348	853.4	99.9
140	0.5562	0.5749	0.5646	0.5451	0.4710	0.6278	0.7200	0.6159	130-140	0.4546	853.9	99.9
150	0.5108	0.5915	0.5931	0.5593	0.4328	0.5613	0.6596	0.5634	140-150	0.3574	854.2	100
160	0.4472	0.5838	0.5770	0.5341	0.3788	0.4603	0.5172	0.4878	150-160	0.2446	854.5	100
170	0.4081	0.5648	0.5401	0.4992	0.3464	0.4071	0.4624	0.4836	160-170	0.1345	854.6	100
180	0.4169	0.5453	0.5898	0.5496	0.4228	0.5447	0.5917	0.5464	170-180	0.0455	854.7	100
DEG	LUMINOUS INTENSITY:cd									UNIT:lm		

C Range: 0 - 360DEG
C Interval: 15.0DEG
Test Speed: HIGH
Temperature:25.3DEG
Operators:LiuLiwen
Test Date:2022-12-02

g Range: 0 - 180DEG
g Interval: 0.5DEG
Test System:EVERFINE GO-SPEX500_V1 SYSTEM V2.0.402
Humidity:65.0%
Test Distance:3.010m [K=1.0000]
Remarks:

LUMINANCE LIMITATION CURVES

Test:U:120.12V I:0.1022A P:11.676W PF:0.9511 Freq:59.98Hz Lamp Flux:822x1 lm		
NAME: ASD-UCBS-24N12CC-WH-5000K	TYPE:	WEIGHT:
SPEC.:	DIM.:	SERIAL No.:
MFR.: ASD Lighting Corp	SUR.:	Shielding Angle:



LUMINANCE cd/(m2)		
G(DEG)	C0/180	C90/270
85	1041	11864
80	1579	7138
75	1931	5595
70	2158	4824
65	2292	4354
60	2399	4037
55	2473	3800
50	2529	3621
45	2571	3475

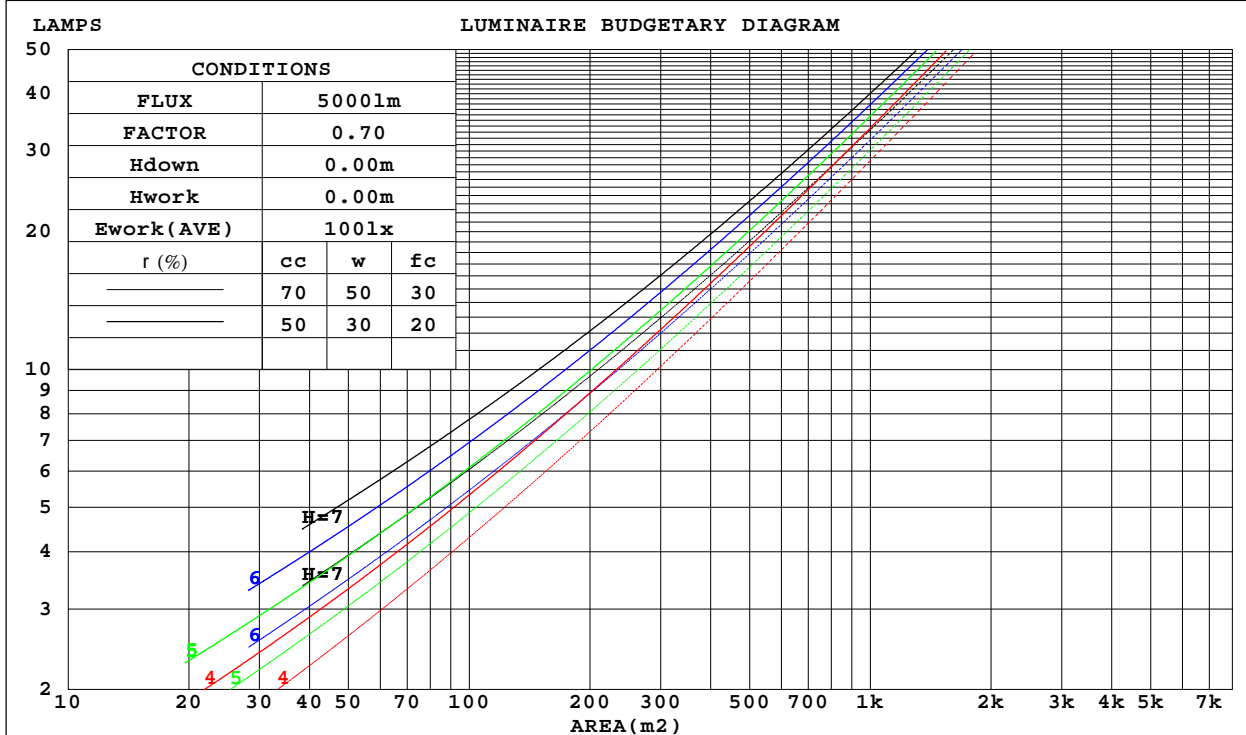
C Range: 0 - 360DEG
 C Interval: 15.0DEG
 Test Speed: HIGH
 Temperature: 25.3DEG
 Operators: LiuLiwen
 Test Date: 2022-12-02

g Range: 0 - 180DEG
 g Interval: 0.5DEG
 Test System: EVERFINE GO-SPEX500_V1 SYSTEM V2.0.402
 Humidity: 65.0%
 Test Distance: 3.010m [K=1.0000]
 Remarks:

CU AND LUMINAIRE BUDGETARY ESTIMATE DIAGRAM

Test:U:120.12V I:0.1022A P:11.676W PF:0.9511 Freq:59.98Hz Lamp Flux:822x1 lm		
NAME: ASD-UCBS-24N12CC-WH-5000K	TYPE:	WEIGHT:
SPEC.:	DIM.:	SERIAL No.:
MFR.: ASD Lighting Corp	SUR.:	Shielding Angle:

r cc	80%			70%			50%			30%			10%			0
r w	50%	30%	10%	50%	30%	10%	50%	30%	10%	50%	30%	10%	50%	30%	10%	0
r fc	20%			20%			20%			20%			20%			0
RCR	RCR:Room Cavity Ratio						Coefficients of Utilization(CU)									
0.0	1.18	1.18	1.18	1.15	1.15	1.15	1.10	1.10	1.10	1.05	1.05	1.05	.00	.00	.00	.98
1.0	1.01	.96	.92	.99	.94	.90	.94	.90	.87	.90	.87	.84	.86	.83	.81	.79
2.0	.87	.80	.74	.85	.78	.73	.81	.76	.71	.78	.73	.69	.74	.70	.67	.64
3.0	.76	.68	.61	.75	.66	.60	.71	.64	.59	.68	.62	.57	.65	.60	.56	.54
4.0	.67	.58	.51	.66	.57	.51	.63	.56	.50	.60	.54	.49	.58	.52	.48	.45
5.0	.60	.51	.44	.59	.50	.43	.56	.49	.43	.54	.47	.42	.52	.46	.41	.39
6.0	.54	.45	.38	.53	.44	.38	.51	.43	.37	.49	.42	.37	.47	.41	.36	.34
7.0	.49	.40	.33	.48	.39	.33	.46	.38	.33	.44	.38	.32	.43	.37	.32	.30
8.0	.45	.36	.30	.44	.35	.30	.42	.35	.29	.41	.34	.29	.39	.33	.29	.27
9.0	.41	.32	.27	.40	.32	.27	.39	.31	.26	.38	.31	.26	.36	.30	.26	.24
10.0	.38	.30	.24	.37	.29	.24	.36	.29	.24	.35	.28	.24	.34	.28	.23	.22



C Range: 0 - 360DEG
 C Interval: 15.0DEG
 Test Speed: HIGH
 Temperature:25.3DEG
 Operators:LiuLiwen
 Test Date:2022-12-02

g Range: 0 - 180DEG
 g Interval: 0.5DEG
 Test System:EVERFINE GO-SPEX500_V1 SYSTEM V2.0.402
 Humidity:65.0%
 Test Distance:3.010m [K=1.0000]
 Remarks:

WEC AND CCEC

Test:U:120.12V I:0.1022A P:11.676W PF:0.9511 Freq:59.98Hz Lamp Flux:822x1 lm		
NAME: ASD-UCBS-24N12CC-WH-5000K	TYPE:	WEIGHT:
SPEC.:	DIM.:	SERIAL No.:
MFR.: ASD Lighting Corp	SUR.:	Shielding Angle:

r cc	80%			70%			50%			30%			10%			0
r w	50%	30%	10%	50%	30%	10%	50%	30%	10%	50%	30%	10%	50%	30%	10%	0
r fc	20%			20%			20%			20%			20%			0
RCR	RCR:Room Cavity Ratio						Wall Exitance Coefficients(WEC)									
0.0																
1.0	.350	.199	.063	.342	.195	.062	.327	.188	.060	.313	.181	.058	.301	.174	.056	
2.0	.315	.173	.053	.308	.170	.052	.295	.164	.051	.283	.159	.050	.272	.154	.048	
3.0	.286	.152	.046	.280	.150	.045	.268	.145	.044	.257	.141	.043	.247	.137	.042	
4.0	.260	.135	.040	.255	.133	.039	.244	.130	.039	.235	.126	.038	.226	.123	.037	
5.0	.239	.122	.035	.234	.120	.035	.224	.117	.034	.216	.114	.034	.208	.111	.033	
6.0	.220	.110	.032	.216	.109	.031	.207	.106	.031	.200	.104	.030	.192	.101	.030	
7.0	.204	.101	.029	.200	.100	.028	.192	.097	.028	.185	.095	.028	.179	.093	.027	
8.0	.190	.093	.026	.186	.092	.026	.179	.090	.026	.173	.088	.025	.167	.086	.025	
9.0	.177	.086	.024	.174	.085	.024	.168	.083	.024	.162	.081	.023	.157	.080	.023	
10.0	.166	.080	.022	.163	.079	.022	.158	.077	.022	.153	.076	.022	.148	.074	.021	

r cc	80%			70%			50%			30%			10%			0
r w	50%	30%	10%	50%	30%	10%	50%	30%	10%	50%	30%	10%	50%	30%	10%	0
r fc	20%			20%			20%			20%			20%			0
RCR	RCR:Room Cavity Ratio						Ceiling Cavity Exitance Coefficients(CCEC)									
0.0	.208	.208	.208	.178	.178	.178	.121	.121	.121	.070	.070	.070	.022	.022	.022	
1.0	.201	.173	.149	.172	.149	.128	.118	.102	.089	.068	.059	.052	.022	.019	.017	
2.0	.193	.150	.113	.165	.129	.098	.113	.089	.068	.065	.052	.040	.021	.017	.013	
3.0	.185	.132	.090	.159	.114	.078	.109	.079	.055	.063	.046	.032	.020	.015	.011	
4.0	.178	.119	.075	.152	.103	.065	.105	.072	.046	.061	.042	.027	.020	.014	.009	
5.0	.170	.109	.064	.146	.094	.056	.101	.066	.039	.058	.039	.023	.019	.013	.008	
6.0	.163	.101	.056	.140	.087	.049	.096	.061	.035	.056	.036	.021	.018	.012	.007	
7.0	.155	.094	.051	.134	.081	.044	.092	.057	.031	.054	.034	.019	.017	.011	.006	
8.0	.149	.088	.046	.128	.076	.040	.089	.054	.029	.052	.032	.017	.017	.010	.006	
9.0	.143	.083	.043	.123	.072	.038	.085	.051	.027	.050	.030	.016	.016	.010	.005	
10.0	.137	.079	.040	.118	.068	.035	.082	.048	.025	.048	.028	.015	.015	.009	.005	

C Range: 0 - 360DEG
 C Interval: 15.0DEG
 Test Speed: HIGH
 Temperature:25.3DEG
 Operators:LiuLiwen
 Test Date:2022-12-02

g Range: 0 - 180DEG
 g Interval: 0.5DEG
 Test System:EVERFINE GO-SPEX500_V1 SYSTEM V2.0.402
 Humidity:65.0%
 Test Distance:3.010m [K=1.0000]
 Remarks:

UGR(Unified Glare Rating) Table

Test:U:120.12V I:0.1022A P:11.676W PF:0.9511 Freq:59.98Hz Lamp Flux:822x1 lm										
NAME: ASD-UCBS-24N12CC-WH-5000K					TYPE:			WEIGHT:		
SPEC.:					DIM.:			SERIAL No.:		
MFR.: ASD Lighting Corp					SUR.:			Shielding Angle:		
ceiling/cavity	0.7	0.7	0.5	0.5	0.3	0.7	0.7	0.5	0.5	0.3
walls	0.5	0.3	0.5	0.3	0.3	0.5	0.3	0.5	0.3	0.3
working plane	0.2	0.2	0.2	0.2	0.2	0.2	0.2	0.2	0.2	0.2
Room dimensions	Viewed crosswise					Viewed endwise				
x = 2H y = 2H	16.8	18.3	17.1	18.6	18.8	18.6	20.2	19.0	20.4	20.7
3H	18.3	19.8	18.7	20.0	20.3	21.1	22.5	21.4	22.8	23.1
4H	18.9	20.3	19.3	20.6	20.9	22.4	23.8	22.7	24.1	24.4
6H	19.3	20.6	19.7	20.9	21.3	23.7	25.0	24.1	25.3	25.7
8H	19.4	20.7	19.8	21.0	21.4	24.5	25.7	24.8	26.0	26.4
12H	19.5	20.7	19.9	21.0	21.4	25.2	26.4	25.6	26.8	27.1
4H 2H	18.0	19.3	18.3	19.6	19.9	19.3	20.7	19.6	21.0	21.3
3H	19.8	21.0	20.2	21.3	21.7	22.0	23.2	22.4	23.5	23.9
4H	20.6	21.7	21.0	22.1	22.5	23.5	24.6	23.9	24.9	25.3
6H	21.2	22.2	21.6	22.6	23.0	25.0	26.0	25.5	26.4	26.8
8H	21.4	22.3	21.8	22.7	23.1	25.9	26.8	26.3	27.2	27.6
12H	21.5	22.3	21.9	22.7	23.2	26.8	27.6	27.3	28.1	28.5
8H 4H	21.5	22.4	22.0	22.9	23.3	23.8	24.8	24.3	25.2	25.6
6H	22.5	23.2	22.9	23.7	24.2	25.7	26.5	26.2	26.9	27.4
8H	22.8	23.5	23.3	24.0	24.5	26.7	27.4	27.2	27.9	28.4
12H	23.1	23.7	23.6	24.2	24.7	27.9	28.5	28.4	29.0	29.5
12H 4H	21.8	22.6	22.2	23.1	23.5	23.9	24.7	24.3	25.2	25.6
6H	22.9	23.6	23.4	24.1	24.6	25.8	26.5	26.3	27.0	27.5
8H	23.4	24.0	23.9	24.5	25.1	26.9	27.5	27.4	28.0	28.6
Variations with the observer position at spacings:										
S = 1.0H	+ 0.1 / - 0.2					+ 0.1 / - 0.1				
1.5H	+ 0.2 / - 0.3					+ 0.2 / - 0.3				
2.0H	+ 0.3 / - 0.5					+ 0.2 / - 0.4				

CIE Pub.117, 854.7 lm Total Lamp Luminous Flux Corrected (8log(F/F0) = -0.5)

C Range: 0 - 360DEG
 C Interval: 15.0DEG
 Test Speed: HIGH
 Temperature:25.3DEG
 Operators:LiuLiwen
 Test Date:2022-12-02

g Range: 0 - 180DEG
 g Interval: 0.5DEG
 Test System:EVERFINE GO-SPEX500_V1 SYSTEM V2.0.402
 Humidity:65.0%
 Test Distance:3.010m [K=1.0000]
 Remarks:

UTILIZATION FACTORS TABLE

Test:U:120.12V I:0.1022A P:11.676W PF:0.9511 Freq:59.98Hz Lamp Flux:822x1 lm		
NAME: ASD-UCBS-24N12CC-WH-5000K	TYPE:	WEIGHT:
SPEC.:	DIM.:	SERIAL No.:
MFR.: ASD Lighting Corp	SUR.:	Shielding Angle:

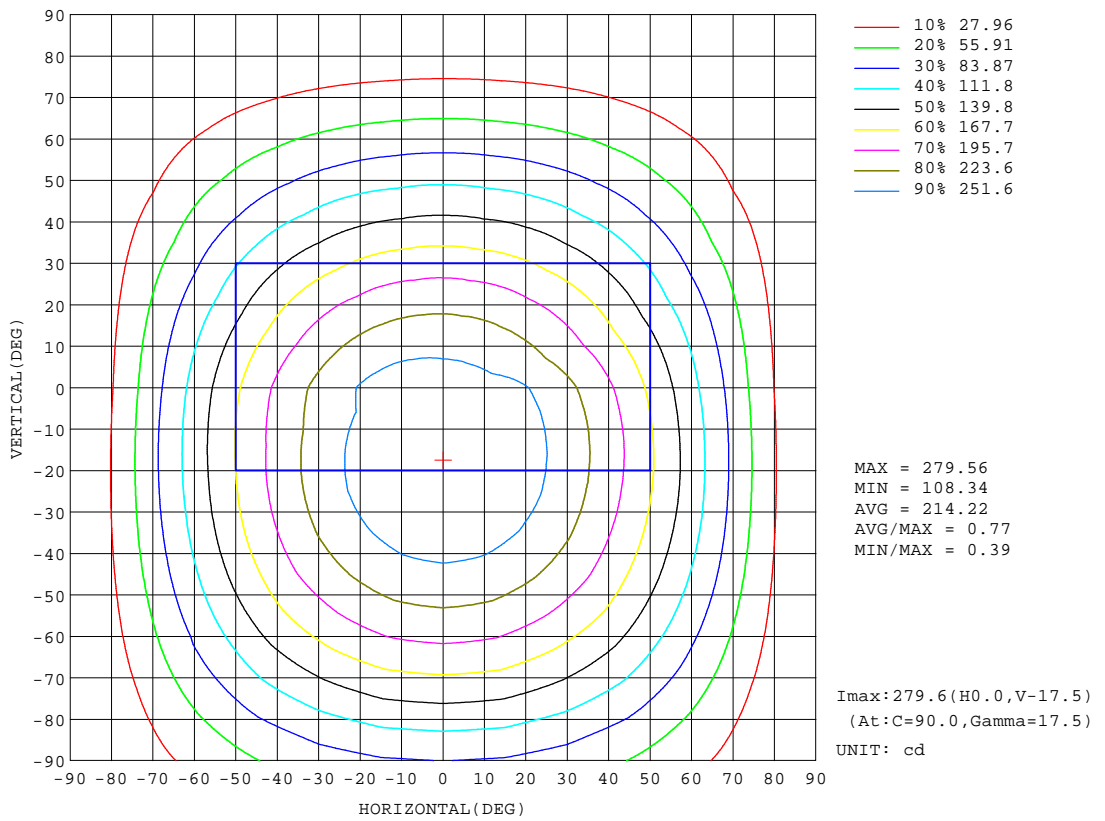
REFLECTANCE										
Ceiling	0.8	0.8	0.8	0.7	0.7	0.7	0.5	0.5	0.5	0
Walls	0.7	0.5	0.3	0.7	0.5	0.3	0.7	0.5	0.3	0
Working plane	0.2	0.2	0.2	0.2	0.2	0.2	0.2	0.2	0.2	0
ROOM INDEX	UTILIZATION FACTORS(PERCENT) $k(RI) \times RCR = 5$									
k = 0.60	55	43	36	54	43	36	53	42	35	29
0.80	65	52	45	63	52	45	62	51	44	37
1.00	73	61	53	71	60	53	69	62	52	45
1.25	80	68	61	78	68	60	75	66	59	52
1.50	85	74	66	83	73	66	80	71	65	57
2.00	92	82	75	90	81	74	86	79	73	64
2.50	96	87	80	94	86	79	89	83	77	68
3.00	99	91	85	97	90	84	93	87	82	72
4.00	104	97	92	101	95	90	96	91	87	78
5.00	106	101	96	104	98	94	99	95	91	81
ROOM INDEX	UF(total)									Direct
According to DIN EN 13032-2 2004			Suspended				SHRNOM = 1.25			

C Range: 0 - 360DEG
 C Interval: 15.0DEG
 Test Speed: HIGH
 Temperature:25.3DEG
 Operators:LiuLiwen
 Test Date:2022-12-02

g Range: 0 - 180DEG
 g Interval: 0.5DEG
 Test System:EVERFINE GO-SPEX500_V1 SYSTEM V2.0.402
 Humidity:65.0%
 Test Distance:3.010m [K=1.0000]
 Remarks:

ISOCANDELA DIAGRAM

Test:U:120.12V I:0.1022A P:11.676W PF:0.9511 Freq:59.98Hz Lamp Flux:822x1 lm		
NAME: ASD-UCBS-24N12CC-WH-5000K	TYPE:	WEIGHT:
SPEC.:	DIM.:	SERIAL No.:
MFR.: ASD Lighting Corp	SUR.:	Shielding Angle:



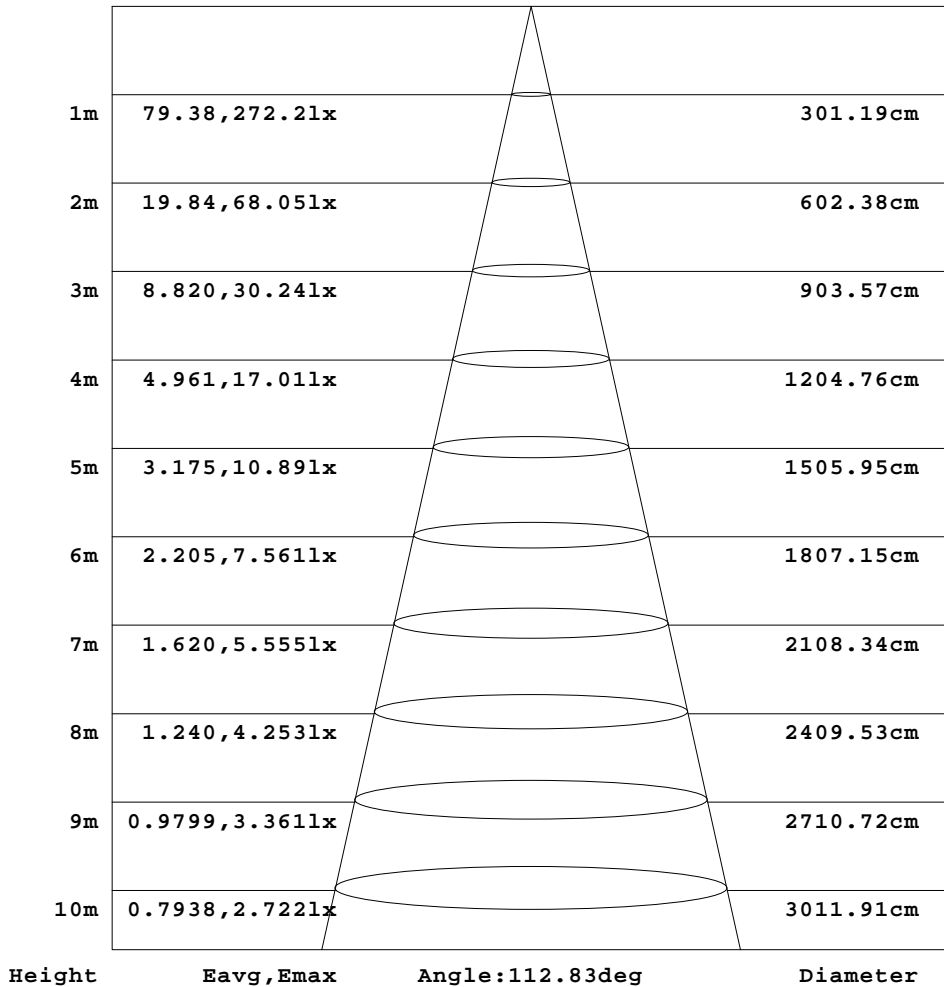
C Range: 0 - 360DEG
 C Interval: 15.0DEG
 Test Speed: HIGH
 Temperature:25.3DEG
 Operators:LiuLiwen
 Test Date:2022-12-02

g Range: 0 - 180DEG
 g Interval: 0.5DEG
 Test System:EVERFINE GO-SPEX500_V1 SYSTEM V2.0.402
 Humidity:65.0%
 Test Distance:3.010m [K=1.0000]
 Remarks:

AAI Figure

Test:U:120.12V I:0.1022A P:11.676W PF:0.9511 Freq:59.98Hz Lamp Flux:822x1 lm		
NAME: ASD-UCBS-24N12CC-WH-5000K	TYPE:	WEIGHT:
SPEC.:	DIM.:	SERIAL No.:
MFR.: ASD Lighting Corp	SUR.:	Shielding Angle:

Flux out:569.2 lm



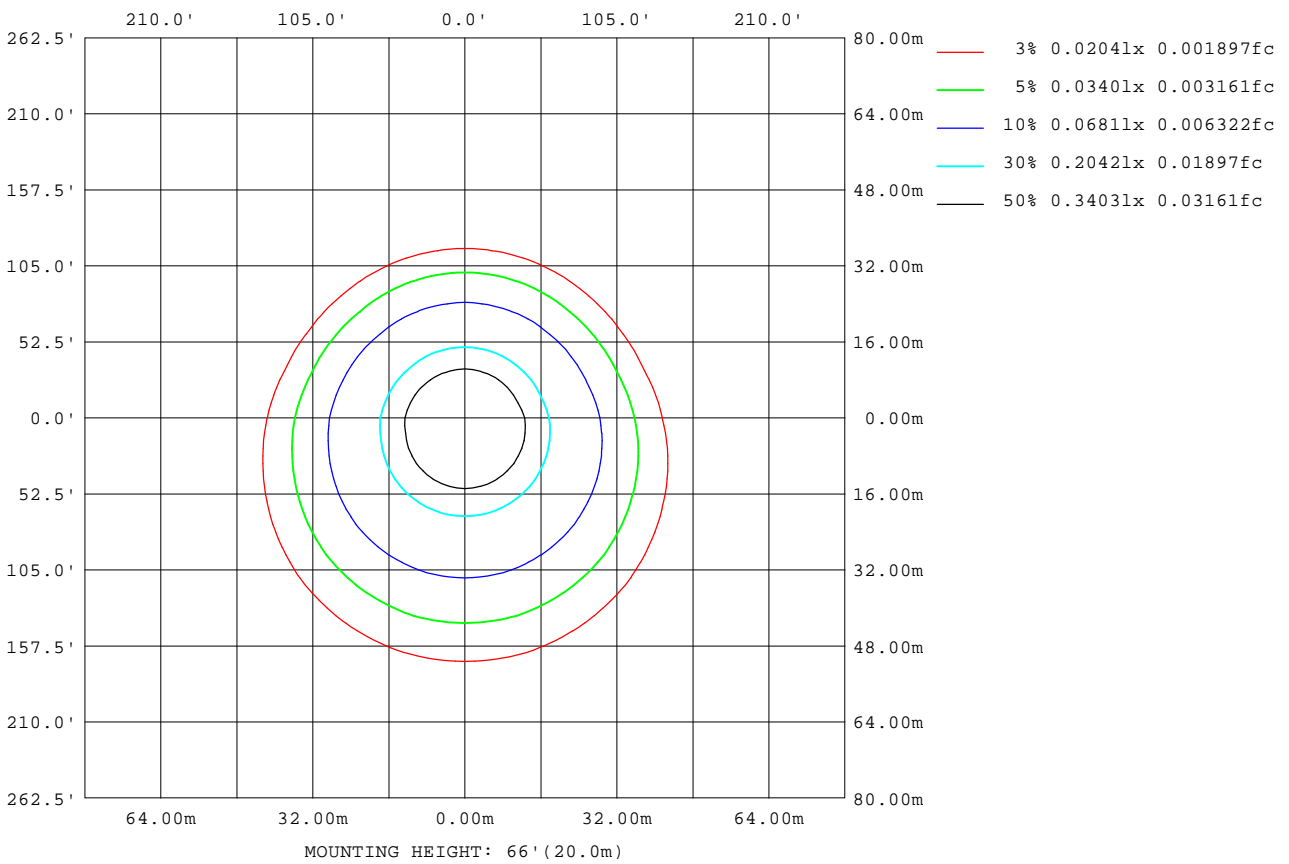
Note:The Curves indicate the illuminated area and the average illumination when the luminaire is at different distance.

C Range: 0 - 360DEG
 C Interval: 15.0DEG
 Test Speed: HIGH
 Temperature:25.3DEG
 Operators:LiuLiwen
 Test Date:2022-12-02

g Range: 0 - 180DEG
 g Interval: 0.5DEG
 Test System:EVERFINE GO-SPEX500_V1 SYSTEM V2.0.402
 Humidity:65.0%
 Test Distance:3.010m [K=1.0000]
 Remarks:

ISOLUX DIAGRAM

Test:U:120.12V I:0.1022A P:11.676W PF:0.9511 Freq:59.98Hz Lamp Flux:822x1 lm		
NAME: ASD-UCBS-24N12CC-WH-5000K	TYPE:	WEIGHT:
SPEC.:	DIM.:	SERIAL No.:
MFR.: ASD Lighting Corp	SUR.:	Shielding Angle:



C Range: 0 - 360DEG
 C Interval: 15.0DEG
 Test Speed: HIGH
 Temperature: 25.3DEG
 Operators: LiuLiwen
 Test Date: 2022-12-02

g Range: 0 - 180DEG
 g Interval: 0.5DEG
 Test System: EVERFINE GO-SPEX500_V1 SYSTEM V2.0.402
 Humidity: 65.0%
 Test Distance: 3.010m [K=1.0000]
 Remarks:

LED Avg.L Report

Test:U:120.12V I:0.1022A P:11.676W PF:0.9511 Freq:59.98Hz Lamp Flux:822x1 lm		
NAME: ASD-UCBS-24N12CC-WH-5000K	TYPE:	WEIGHT:
SPEC.:	DIM.:	SERIAL No.:
MFR.: ASD Lighting Corp	SUR.:	Shielding Angle:

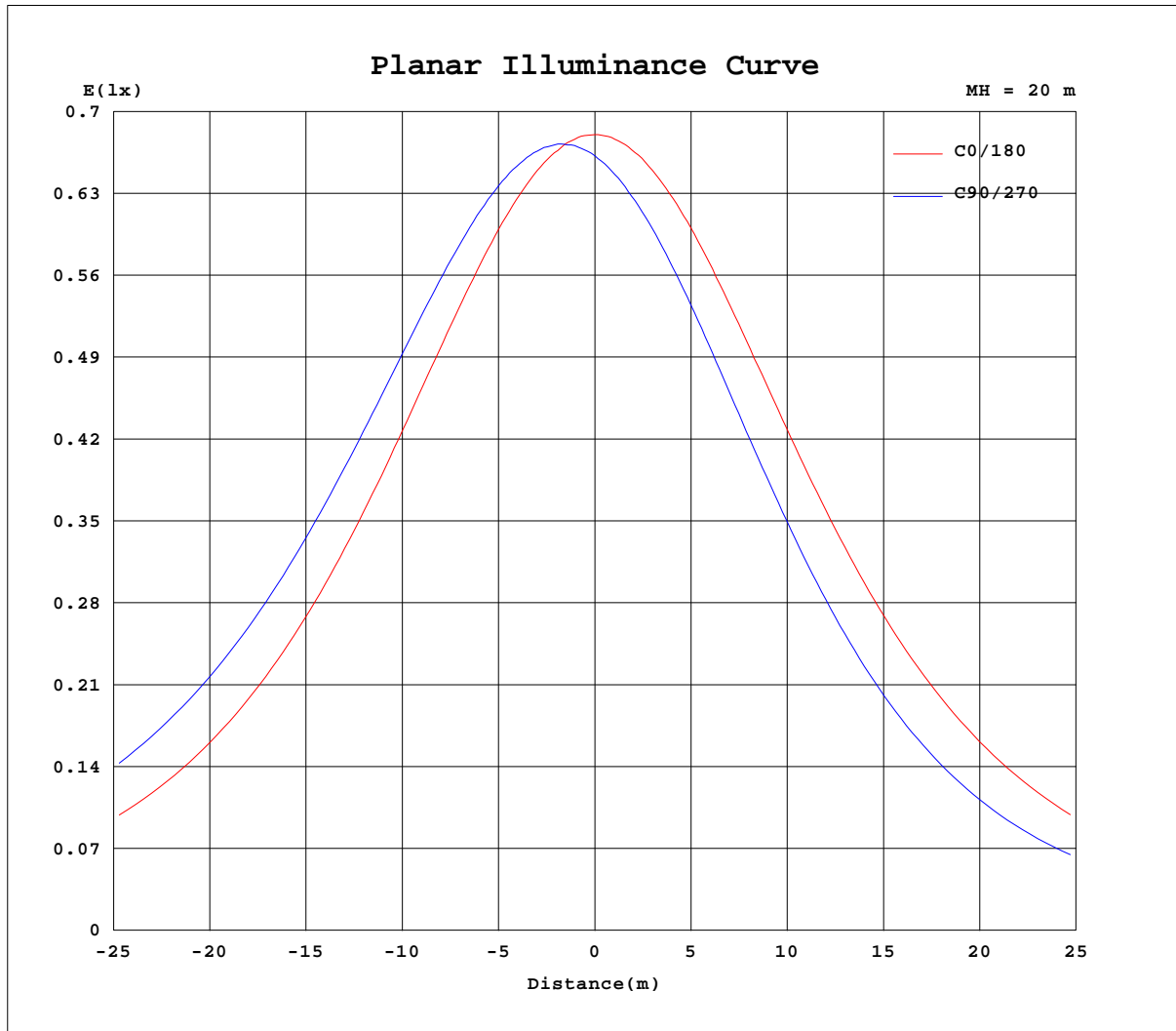
AvgL	cd/m2
L_0~180(65)av	2245
L_0~180(75)av	1869
L_0~180(85)av	964
L_90~270(65)av	2848
L_90~270(75)av	3331
L_90~270(85)av	6359
L_45(65)av	2590
L_45(75)av	2793
L_45(85)av	4588

Standard: GB/T 29293-2012

C Range: 0 - 360DEG
C Interval: 15.0DEG
Test Speed: HIGH
Temperature:25.3DEG
Operators:LiuLiwen
Test Date:2022-12-02

g Range: 0 - 180DEG
g Interval: 0.5DEG
Test System:EVERFINE GO-SPEX500_V1 SYSTEM V2.0.402
Humidity:65.0%
Test Distance:3.010m [K=1.0000]
Remarks:

Planar Illuminance Curve



C Range: 0 - 360DEG
 C Interval: 15.0DEG
 Test Speed: HIGH
 Temperature: 25.3DEG
 Operators: LiuLiwen
 Test Date: 2022-12-02

g Range: 0 - 180DEG
 g Interval: 0.5DEG
 Test System: EVERFINE GO-SPEX500_V1 SYSTEM V2.0.402
 Humidity: 65.0%
 Test Distance: 3.010m [K=1.0000]
 Remarks:

LUMINOUS DISTRIBUTION INTENSITY DATA

Test:U:120.12V I:0.1022A P:11.676W PF:0.9511 Freq:59.98Hz Lamp Flux:822x1 lm		
NAME: ASD-UCBS-24N12CC-WH-5000K	TYPE:	WEIGHT:
SPEC.:	DIM.:	SERIAL No.:
MFR.: ASD Lighting Corp	SUR.:	Shielding Angle:

Table--1

UNIT: cd

C(DEG) g (DEG)	0	15	30	45	60	75	90	105	120	135	150	165	180	195	210	225	240	255	270
0	266	266	266	266	266	266	266	266	266	266	266	266	266	266	266	266	266	266	266
5	265	267	269	271	272	273	273	273	272	271	269	267	265	263	261	259	258	257	257
10	261	266	270	273	276	277	278	277	276	273	270	266	262	257	254	250	248	246	246
15	255	262	268	273	277	279	281	279	277	273	268	262	256	250	244	239	236	233	233
20	247	256	264	271	276	279	281	279	276	271	264	256	248	240	232	226	222	218	218
25	237	248	257	266	272	277	278	277	273	266	258	248	238	228	219	211	206	202	202
30	225	237	249	259	267	272	274	272	267	259	249	238	226	214	204	195	189	185	184
35	211	225	238	250	259	265	267	265	259	251	239	226	212	198	187	177	171	166	165
40	195	211	225	239	249	256	258	256	249	240	226	211	196	181	169	158	152	147	146
45	178	196	211	226	237	244	247	245	237	227	212	196	179	162	149	138	132	128	127
50	159	178	195	211	223	231	234	231	224	212	196	179	160	142	129	118	113	108	108
55	139	159	178	195	208	216	219	217	208	196	178	160	139	120	107	97.6	93.3	89.8	90.0
60	117	139	159	178	191	200	203	200	191	178	159	139	118	98.2	86.1	78.4	74.7	72.5	72.4
65	94.8	118	139	159	172	182	185	182	173	159	139	118	95.0	76.2	65.4	59.7	57.2	55.7	55.7
70	72.2	95.4	117	138	153	163	166	163	153	139	118	95.4	71.5	53.9	45.9	42.4	41.1	40.3	40.5
75	48.9	72.3	95.1	117	132	143	146	143	132	117	95.5	72.2	47.9	33.1	28.6	27.1	26.8	26.6	26.8
80	26.8	49.5	73.6	95.2	111	122	125	122	111	95.5	73.8	49.3	25.7	15.9	14.7	14.5	15.0	15.0	15.4
85	8.87	28.7	52.5	74.1	89.7	101	104	101	89.9	74.4	52.6	28.6	7.93	4.59	5.08	5.58	6.22	6.59	6.89
90	0.37	13.2	34.4	55.0	70.8	81.5	84.8	81.5	71.0	55.5	34.6	13.1	0.22	0.29	0.40	0.51	0.64	0.75	0.88
95	0.33	0.43	11.5	35.1	50.3	62.2	65.7	62.2	50.2	35.0	9.87	0.33	0.25	0.36	0.50	0.63	0.73	0.80	0.82
100	0.41	0.35	0.33	0.54	6.08	9.81	14.5	9.93	5.86	0.33	0.34	0.35	0.33	0.44	0.59	0.74	0.83	0.90	0.92
105	0.45	0.40	0.38	0.36	0.36	0.35	0.35	0.35	0.36	0.36	0.37	0.38	0.37	0.47	0.62	0.77	0.89	0.96	0.99
110	0.49	0.43	0.41	0.41	0.41	0.41	0.41	0.41	0.41	0.40	0.40	0.41	0.40	0.49	0.62	0.77	0.88	0.96	1.00
115	0.51	0.47	0.45	0.45	0.44	0.44	0.44	0.44	0.44	0.43	0.43	0.44	0.43	0.50	0.62	0.75	0.87	0.94	0.98
120	0.55	0.50	0.49	0.49	0.49	0.49	0.49	0.49	0.47	0.47	0.46	0.47	0.44	0.51	0.62	0.73	0.82	0.92	0.97
125	0.56	0.52	0.51	0.52	0.51	0.52	0.53	0.51	0.49	0.49	0.48	0.48	0.46	0.51	0.62	0.70	0.76	0.85	0.89
130	0.56	0.54	0.55	0.54	0.54	0.53	0.54	0.52	0.52	0.51	0.51	0.49	0.46	0.50	0.61	0.68	0.73	0.78	0.82
135	0.57	0.55	0.56	0.56	0.54	0.56	0.57	0.54	0.52	0.53	0.53	0.50	0.47	0.51	0.59	0.65	0.68	0.73	0.80
140	0.56	0.55	0.58	0.57	0.56	0.57	0.56	0.55	0.54	0.55	0.54	0.50	0.47	0.50	0.58	0.63	0.65	0.68	0.72
145	0.54	0.56	0.59	0.58	0.58	0.59	0.59	0.57	0.56	0.55	0.55	0.50	0.46	0.47	0.55	0.58	0.63	0.67	0.71
150	0.51	0.54	0.57	0.59	0.59	0.60	0.59	0.58	0.56	0.56	0.53	0.48	0.43	0.43	0.50	0.56	0.58	0.60	0.66
155	0.48	0.52	0.57	0.59	0.60	0.60	0.59	0.57	0.57	0.55	0.53	0.47	0.40	0.41	0.48	0.49	0.55	0.57	0.59
160	0.45	0.51	0.54	0.58	0.59	0.60	0.58	0.56	0.54	0.53	0.49	0.45	0.38	0.38	0.41	0.46	0.45	0.49	0.52
165	0.41	0.49	0.53	0.56	0.58	0.58	0.55	0.53	0.53	0.50	0.46	0.42	0.35	0.36	0.37	0.41	0.45	0.44	0.46
170	0.41	0.47	0.54	0.56	0.55	0.55	0.54	0.50	0.49	0.50	0.47	0.41	0.35	0.36	0.39	0.41	0.41	0.42	0.46
175	0.41	0.46	0.52	0.56	0.57	0.59	0.56	0.52	0.52	0.52	0.48	0.42	0.37	0.40	0.43	0.45	0.45	0.45	0.48
180	0.42	0.46	0.50	0.55	0.53	0.55	0.59	0.55	0.52	0.55	0.51	0.44	0.42	0.45	0.50	0.54	0.53	0.55	0.59

C Range: 0 - 360DEG
 C Interval: 15.0DEG
 Test Speed: HIGH
 Temperature:25.3DEG
 Operators:LiuLiwen
 Test Date:2022-12-02

g Range: 0 - 180DEG
 g Interval: 0.5DEG
 Test System:EVERFINE GO-SPEX500_V1 SYSTEM V2.0.402
 Humidity:65.0%
 Test Distance:3.010m [K=1.0000]
 Remarks:

LUMINOUS DISTRIBUTION INTENSITY DATA

Test:U:120.12V I:0.1022A P:11.676W PF:0.9511 Freq:59.98Hz Lamp Flux:822x1 lm		
NAME: ASD-UCBS-24N12CC-WH-5000K	TYPE:	WEIGHT:
SPEC.:	DIM.:	SERIAL No.:
MFR.: ASD Lighting Corp	SUR.:	Shielding Angle:

Table--2

UNIT: cd

C(DEG) g (DEG)	285	300	315	330	345															
0	266	266	266	266	266															
5	257	258	259	261	263															
10	246	248	250	253	257															
15	233	236	239	244	249															
20	218	221	226	232	239															
25	202	206	211	219	227															
30	185	189	195	204	213															
35	166	171	177	187	198															
40	147	152	158	169	180															
45	128	132	138	149	162															
50	109	113	118	129	142															
55	90.0	93.6	98.2	108	121															
60	72.8	75.2	79.1	86.9	99.0															
65	56.0	57.7	60.4	66.3	77.2															
70	40.6	41.7	43.1	47.0	55.0															
75	26.8	27.3	27.8	29.6	34.3															
80	15.2	15.3	15.0	15.5	17.0															
85	6.74	6.45	5.84	5.44	5.19															
90	0.86	0.90	0.71	0.64	0.36															
95	0.79	0.72	0.62	0.48	0.36															
100	0.90	0.82	0.72	0.57	0.43															
105	0.96	0.87	0.76	0.61	0.47															
110	0.95	0.86	0.76	0.61	0.48															
115	0.93	0.86	0.74	0.61	0.49															
120	0.91	0.81	0.72	0.60	0.51															
125	0.84	0.76	0.69	0.60	0.51															
130	0.77	0.72	0.67	0.61	0.52															
135	0.73	0.67	0.64	0.59	0.52															
140	0.69	0.65	0.62	0.58	0.51															
145	0.68	0.62	0.58	0.55	0.49															
150	0.62	0.57	0.56	0.51	0.46															
155	0.58	0.56	0.50	0.49	0.44															
160	0.52	0.49	0.49	0.45	0.42															
165	0.50	0.50	0.47	0.44	0.41															
170	0.48	0.47	0.48	0.46	0.41															
175	0.52	0.49	0.50	0.49	0.43															
180	0.55	0.53	0.55	0.51	0.44															

C Range: 0 - 360DEG
 C Interval: 15.0DEG
 Test Speed: HIGH
 Temperature:25.3DEG
 Operators:LiuLiwen
 Test Date:2022-12-02

g Range: 0 - 180DEG
 g Interval: 0.5DEG
 Test System:EVERFINE GO-SPEX500_V1 SYSTEM V2.0.402
 Humidity:65.0%
 Test Distance:3.010m [K=1.0000]
 Remarks: