

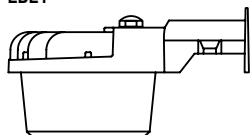
ASD[®] LED BARN LIGHT

- ▶ **DESIGN** - LED BARN LIGHT WITH PHOTOCELL has a die-cast aluminum housing with excellent heat dissipation and anti-glare PC lens with even light distribution. It is designed to operate on 120-277V circuits with a 0-10V dimmable driver.
- ▶ **PHOTOCELL** - The built-in Dusk to Dawn Photocell will automatically turn the fixture on/off depending on the time of day.
- ▶ **INSTALLATION** - This fixture can be mounted directly to electrical boxes to poles with a mounting arm bracket. It comes with 7 ft cord.
- ▶ **APPLICATION** - Perfect commercial or industrial solution for both indoor and outdoor applications such as: gardens, driveways, garages, barns, loading areas, building exteriors, parking lots, streets, and more. It is also Wet Locations rated.
- ▶ **ADVANTAGES** - With calculated lifespan up to 130,000 hours, these fixtures are made to last decades under normal operation! ASD provides a 5-year limited warranty along with ETL and DLC Premium certifications to guarantee top quality products and safety!

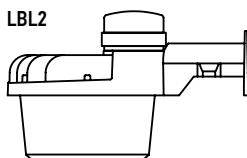
Catalog number	
Notes	
Type	



LBL1



LBL2



Model	Watts	Voltage	Dimmable	Lumens	CCT	Finish	Dimensions (LxWxH)	Option
ASD-LBL1-35D40-PC-BZ	35W	120-277 V	0-10 V	4,340 lm	4,000 K	Bronze	10-1/2" x 7" x 5-5/8"	Photocell
ASD-LBL1-35D50-PC-BZ	35W	120-277 V	0-10 V	4,410 lm	5,000 K	Bronze	10-1/2" x 7" x 5-5/8"	Photocell
ASD-LBL1-70D40-PC-BZ	70W	120-277 V	0-10 V	8,680 lm	4,000 K	Bronze	10-1/2" x 7" x 5-5/8"	Photocell
ASD-LBL1-70D50-PC-BZ	70W	120-277 V	0-10 V	8,820 lm	5,000 K	Bronze	10-1/2" x 7" x 5-5/8"	Photocell
ASD-LBL2-70D40-PC-BZ	70W	120-277 V	0-10 V	8,680 lm	4,000 K	Bronze	10-1/2" x 7" x 5-5/8"	Photocell
ASD-LBL2-70D50-PC-BZ	70W	120-277 V	0-10 V	8,820 lm	5,000 K	Bronze	10-1/2" x 7" x 5-5/8"	Photocell

For most up-to-date spec sheets please refer to asd-lighting.com



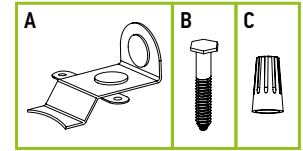
LED BARN LIGHT

PRODUCT SPECIFICATIONS:

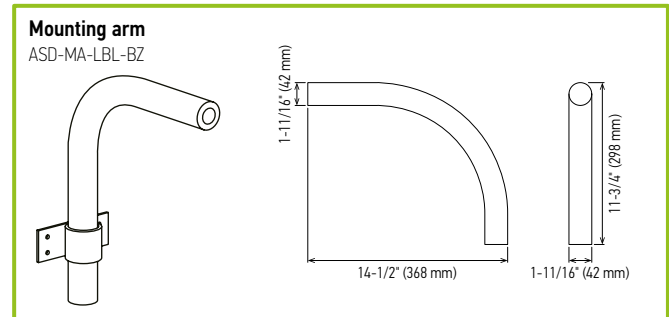
Construction & Materials				
Housing	Die cast aluminum			
Finish	Bronze			
Weight	ASD-LBL1-35D40-PC-BZ	3.1 lb (1.4 kg)		
	ASD-LBL1-35D50-PC-BZ			
	ASD-LBL1-70D40-PC-BZ			
	ASD-LBL1-70D50-PC-BZ			
	ASD-LBL2-70D40-PC-BZ	3.5 lb (1.6 kg)		
ASD-LBL2-70D50-PC-BZ				
Environmental system				
Work environment	Suitable for Wet Locations, IP54			
Operating temperature	-4°F to 104°F (-20°C to 40°C)			
L-70 Life	R > 54,000 hrs; C > 130,000 hrs			
Optical system				
Luminous flux	ASD-LBL1-35D40-PC-BZ	4,340 lm		
	ASD-LBL1-35D50-PC-BZ	4,410 lm		
	ASD-LBL1-70D40-PC-BZ	8,680 lm		
	ASD-LBL1-70D50-PC-BZ	8,820 lm		
	ASD-LBL2-70D40-PC-BZ	8,680 lm		
	ASD-LBL2-70D50-PC-BZ	8,820 lm		
Color temperature	4,000 K; 5,000 K			
CRI	> 70			
Electrical system				
Input voltage	120-277 V			
Max input current	ASD-LBL1-35D40-PC-BZ	0.3 A		
	ASD-LBL1-35D50-PC-BZ			
	ASD-LBL1-70D40-PC-BZ	0.6 A		
	ASD-LBL1-70D50-PC-BZ			
	ASD-LBL2-70D40-PC-BZ	0.6 A		
Inrush current (Action time)	ASD-LBL1-35D40-PC-BZ	8.5 A (0.11 S)		
	ASD-LBL1-35D50-PC-BZ			
	ASD-LBL1-70D40-PC-BZ	8.7 A (0.11 S)		
	ASD-LBL1-70D50-PC-BZ			
	ASD-LBL2-70D40-PC-BZ	8.7 A (0.11 S)		
	ASD-LBL2-70D50-PC-BZ			
Off state power	0W			
Power consumption	ASD-LBL1-35D40-PC-BZ	35W		
	ASD-LBL1-35D50-PC-BZ			
	ASD-LBL1-70D40-PC-BZ	70W		
	ASD-LBL1-70D50-PC-BZ			
	ASD-LBL2-70D40-PC-BZ	70W		
ASD-LBL2-70D50-PC-BZ				
Power factor	> 0.9			
Output voltage	144 V			
Max output current	ASD-LBL1-35D40-PC-BZ	0.18 A		
	ASD-LBL1-35D50-PC-BZ			
	ASD-LBL1-70D40-PC-BZ	0.36 A		
	ASD-LBL1-70D50-PC-BZ			
	ASD-LBL2-70D40-PC-BZ	0.36 A		
ASD-LBL2-70D50-PC-BZ				
Surge protection DM/CM	2.5 kV			
Dimming compatible controls				
Brand	Lutron		Leviton	
Models	DVSTV-BL	DVSTV-WH	DVSTV-GR	DS 710-10Z
	DVSTV-AL	DVSTV-BR	DVSTV-LA	AWSMT-7DW
	DVSTV-IV			
Regular and voluntary certifications				
5-year limited warranty				
DesignLights Consortium (DLC) listed (Classification: Premium)				
Main: Outdoor luminaires; General application: Low/mid output;				
Primary use: Outdoor full-cutoff wall-mounted area luminaires				
cETLus certified 4008281				

PACKAGE CONTENTS:

Description	Q-ty
LED Barn Light with photocell	1
Cover plate (A)	1
Mounting screw (B)	3
Wire nut (C)	3
Box	1



ACCESSORIES (sold separately):



ACCESSORY COMPATIBILITY LIST:

Models	Accessories	Mounting arm ASD-MA-LBL-BZ
	ASD-LBL1-35D40-PC-BZ	
ASD-LBL1-35D50-PC-BZ		•
ASD-LBL1-70D40-PC-BZ		•
ASD-LBL1-70D50-PC-BZ		•
ASD-LBL2-70D40-PC-BZ		•
ASD-LBL2-70D50-PC-BZ		•

BUILT-IN PHOTOCELL INFORMATION



The fixtures with a built-in photocell automatically turn off during daylight hours.

- The light is always ON when luminance is < 10-20 lux (0.9-1.8 fc) (nighttime).
- The light is always OFF when luminance is > 30-80 lux (2.8-7.4 fc) (daytime).

For most up-to-date spec sheets please refer to asd-lighting.com



LED BARN LIGHT

INSTALLATION GUIDE

IMPORTANT SAFETY INFORMATION:

Please read all the instructions below before installation.

- ▶ Make sure that the supply voltage corresponds to the rated product voltage.
- ▶ The product must be installed by a qualified electrician in accordance with the National Electrical Code and corresponding local codes.
- ▶ If the product is damaged, do not use it.

⚠ WARNING

RISK OF PERSONAL INJURY – READ and follow all WARNINGS and installation instructions. Keep or give to the owner for future reference.

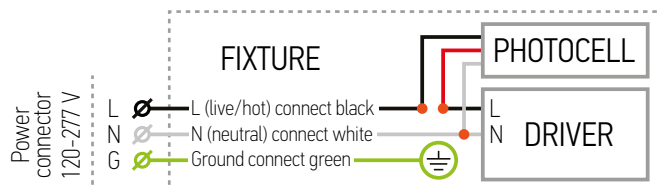
Risk of cuts: Wear gloves to prevent cuts or abrasions when removing from carton, handling, installing, and maintaining this product.

Risk of electric shock: This product must be installed in accordance with the applicable installation code by a person familiar with the construction and operation of the product and the hazards involved.

Risk of Fire: Minimum 194°F supply conductors. Consult a qualified electrician to ensure correct branch circuit conductor.

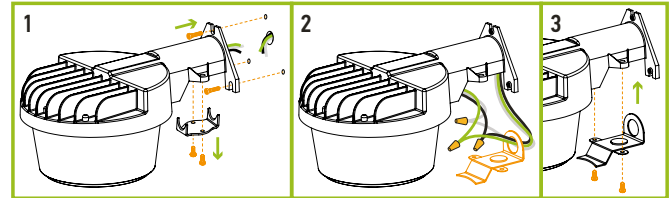
ASD® assumes no responsibility for claims arising out of improper or careless installation or handling of this product.

ELECTRICAL SCHEMATIC DIAGRAM:



WALL INSTALLATION:

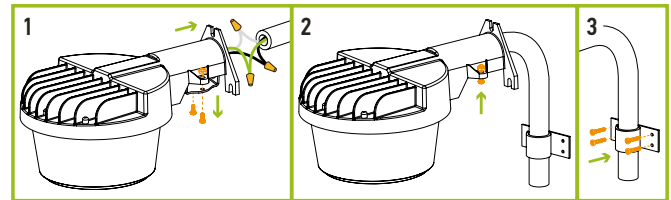
1. Take off default cover plate from bottom of arm. Use expansion bolts to secure the fixture on mounting surface.
2. Pass the wires through the cover plate. Connect the wires: Black to Black, White to White, Green to Green using the wire nuts.
3. Install the new cover plate with screws.



ARM INSTALLATION ASD-MA-LBL-BZ

sold separately:

1. Run extension wiring through the arm. Connect the wires: Black to Black, White to White, Green to Green using the wire nuts.
2. Secure clamp onto the base of the arm, as shown below. Secure it with bolt and nut.
3. Install the clamp with arm on the wall using four screws.



ORDERING INFORMATION

Model	UPC	Pcs. per carton	Carton size	Carton weight	GTIN 14
ASD-LBL1-35D40-PC-BZ	810050734042	2	15.7" x 12.4" x 6.9"	7.7 lb	10810050734049
ASD-LBL1-35D50-PC-BZ	810050734059	2	15.7" x 12.4" x 6.9"	7.7 lb	10810050734056
ASD-LBL1-70D40-PC-BZ	810050734066	2	15.7" x 12.4" x 6.9"	7.7 lb	10810050734063
ASD-LBL1-70D50-PC-BZ	810050734073	2	15.7" x 12.4" x 6.9"	7.7 lb	10810050734070
ASD-LBL2-70D40-PC-BZ	810050734080	2	15.7" x 12.4" x 6.9"	8.6 lb	10810050734087
ASD-LBL2-70D50-PC-BZ	810050734097	2	15.7" x 12.4" x 6.9"	8.6 lb	10810050734094

ACCESSORIES:

Model	Name	UPC	Pcs. per carton	Carton size	Carton weight	GTIN 14
ASD-MA-LBL-BZ	Mounting arm	810050734103	6	19.5" x 11.4" x 7.5"	13.9 lb	10810050734100

For most up-to-date spec sheets please refer to asd-lighting.com

ASD LIGHTING CORP

E-mail: orders@asd-lighting.com | Web site: www.asd-lighting.com

