



# NEW CONSTRUCTION CAN

► **DESIGN & OPTIONS** - NEW CONSTRUCTION CAN is perfect for installing LED retrofit lighting kits into newly constructed or remodeled homes. Both 13.5" hanger bars are extendable to a maximum length of 25.5" and can slide along the bars from end to end. The NEW CONSTRUCTION CAN is IC rated and has a multipurpose, airtight design that allows you to accommodate a range of LED retrofit lighting kits with TP24 connectors. The preinstalled J-box allows you to safely connect wires as well.

► **INSTALLATION** Installation is quick and easy: just adjust the CAN position and fix it with nails. Install the light using TP24 connector. Refer to install instructions for detailed steps.

► **APPLICATION** - This NEW CONSTRUCTION CAN is a great solution for both residential and commercial use. It is perfect for installing LED retrofit lighting kits into newly constructed or remodeled homes.

## PRODUCT LEGEND:

Family	Size	Base	Thermal protection
ASD-CNC	X	XX	XX
New Construction Can	4 = 4 inch 6 = 6 inch	TP24 = TP24 Connector	AI = Air Tight IC Housing

## NEW CONSTRUCTION CAN:

Model	Size	Dimensions (LxWxH)	UPC	Pcs per Carton	GTIN 14 for carton
ASD-CNC4-TP24AI	4"	14 1/5" x 8 1/4" x 5 1/2"	810050732635	6	10810050732632
ASD-CNC6-TP24AI	6"	14 1/5" x 9 4/5" x 8 1/4"	810050732642	6	10810050732649

## PRODUCT SPECIFICATIONS:

Construction & Materials		
Housing	Iron+Aluminum	
Weight	ASD-CNC4-TP24AI	1.5 lb (0.7 kg)
	ASD-CNC6-TP24AI	2.2 lb (1.0 kg)
Environmental System		
Work Environment	Suitable for Dry Locations	
Operating Temperature	+14°F to 113°F (-10°C to 45°C)	
Regular and Voluntary Certifications		
5-year limited warranty		
cETLus certified		

## PACKAGE CONTENTS:

Description	Q-ty
New Construction Can	6
Box	1
Cut sheet	2

## INSTALLATION GUIDE

### IMPORTANT SAFETY INFORMATION:

Please read all the instructions below before installation.

- The product must be installed by a qualified electrician in accordance with the National Electrical Code and corresponding local codes.
- If the product is damaged, do not use it.

### ⚠ WARNING

**RISK OF PERSONAL INJURY – READ and follow all WARNINGS and installation instructions.**

Keep or give to the owner for future reference.

**Risk of cuts:** Wear gloves to prevent cuts or abrasions when removing from carton, handling, installing, and maintaining this product.

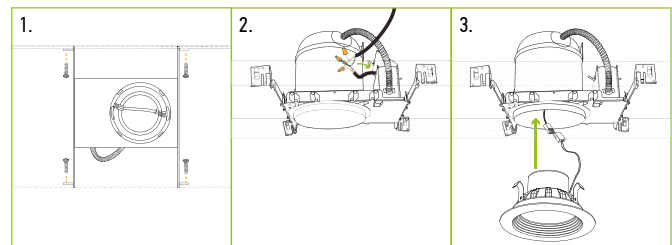
ASD® assumes no responsibility for claims arising out of improper or careless Installation or handling of this product.

Catalog number	
Notes	
Type	



## INSTALLATION STEPS:

1. Adjust the sliding clips, and fix them with dowels on each end.
2. Make a wire connection inside the Junction Box.
3. Install the light using TP24 connector.



For most up-to-date spec sheets please refer to [asd-lighting.com](http://asd-lighting.com)