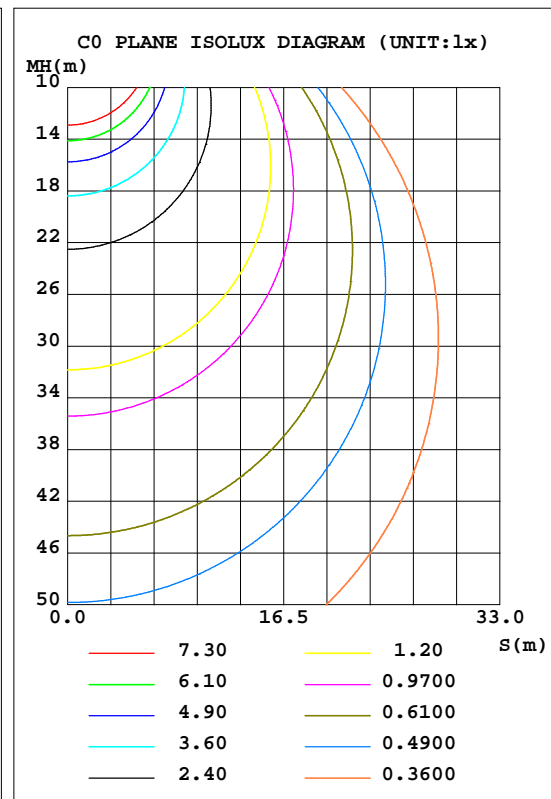
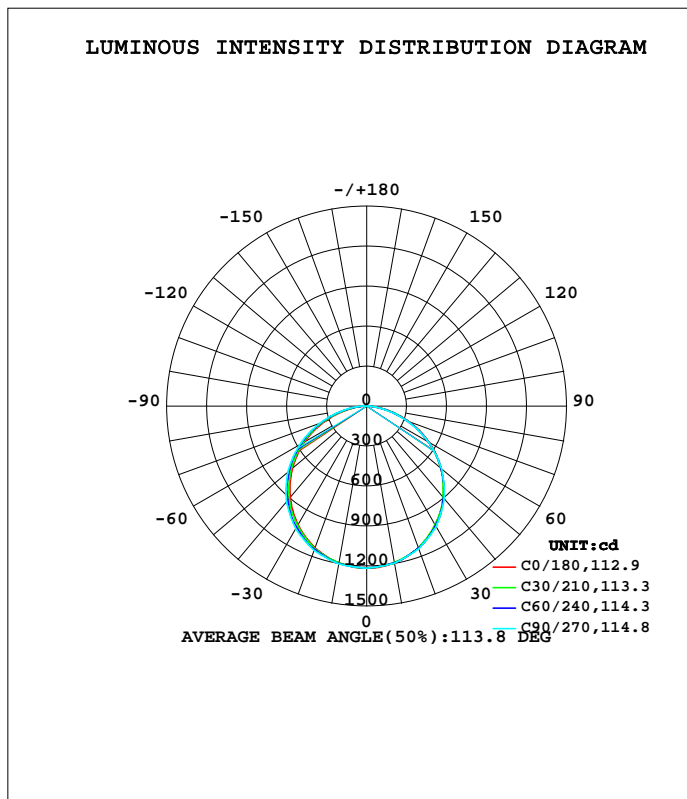


LUMINAIRE PHOTOMETRIC TEST REPORT

Test:U:120.0V I:0.2280A P:27.37W PF:0.9915 Lamp Flux:3492.48x1 lm		
NAME: ASD Lighting corporation	TYPE:LED PANEL	WEIGHT:
SPEC.:ASD-ELP01-22D2740-PRM	DIM.: 2x2	SERIAL No.:BLD20170830A15
MFR.: ASD Lighting corporation	SUR.:0.55*0.55	Shielding Angle:

DATA OF LAMP		PHOTOMETRIC DATA Eff: 127.60 lm/W			
MODEL		I _{max} (cd)	1216	S/MH(C0/180)	1.26
NOMINAL POWER(W)	27	LOR(%)	100.0	S/MH(C90/270)	1.30
RATED VOLTAGE(V)		TOTAL FLUX(lm)	3492.5	η UP, DN(C0-180)	0.0,49.0
NOMINAL FLUX(lm)	3492.48	CIE CLASS	DIRECT	η UP, DN(C180-360)	0.0,51.0
LAMPS INSIDE	1	η up(%)	0.0	CIBSE SHR NOM	1.25
TEST VOLTAGE(V)		η down(%)	100.0	CIBSE SHR MAX	1.35



C Range: 0 - 360DEG
 C Interval: 5.0DEG
 Test Speed: HIGH
 Temperature:26DEG
 Operators:NEIKO
 Test Date:2017-08-30

γ Range: 0 - 180DEG
 γ Interval: 0.5DEG
 Test System:EVERFINE GO-2000B_V1 SYSTEM V2.0.350
 Humidity:60%
 Test Distance:12.218m [K=1.0000]
 Remarks:

ZONAL FLUX DIAGRAM

ZONAL FLUX DIAGRAM:

γ	C0	C45	C90	C135	C180	C225	C270	C315	γ	Φ zone	Φ total	%lum,lamp
5	1211	1207	1207	1207	1211	1209	1209	1209	0- 5	28.97	28.97	0.82,0.82
10	1195	1192	1197	1192	1195	1196	1202	1196	5- 10	85.96	114.9	3.26,3.26
15	1169	1169	1168	1169	1169	1175	1178	1175	10- 15	140.3	255.2	7.25,7.25
20	1132	1130	1140	1130	1132	1139	1153	1139	15- 20	190.1	445.3	12.6,12.6
25	1085	1087	1092	1087	1086	1098	1109	1099	20- 25	233.8	679.1	19.3,19.3
30	1030	1032	1043	1032	1030	1046	1065	1046	25- 30	269.7	948.8	26.9,26.9
35	966.0	967.1	974.7	966.4	965.7	983.2	1001	984.7	30- 35	296.8	1246	35.4,35.4
40	893.7	897.6	906.0	896.2	893.2	915.7	936.9	918.1	35- 40	313.8	1559	44.3,44.3
45	814.6	813.5	819.6	812.2	813.6	834.9	855.0	837.1	40- 45	320.5	1880	53.4,53.4
50	728.8	728.9	733.2	727.7	727.8	753.4	773.1	755.0	45- 50	316.0	2196	62.4,62.4
55	636.4	631.8	633.1	629.5	635.7	657.9	676.9	660.7	50- 55	301.0	2497	70.9,70.9
60	539.1	534.4	533.0	531.2	538.6	562.0	580.7	565.8	55- 60	275.5	2773	78.8,78.8
65	437.1	427.9	425.3	425.7	436.6	458.6	475.1	461.5	60- 65	240.8	3013	85.6,85.6
70	332.4	321.9	317.6	320.2	331.9	354.4	369.4	356.6	65- 70	197.7	3211	91.2,91.2
75	228.6	215.6	213.8	214.1	227.7	249.0	263.7	250.7	70- 75	149.0	3360	95.4,95.4
80	131.6	119.6	116.4	118.1	130.3	149.7	162.2	151.1	75- 80	97.70	3458	98.2,98.2
85	40.74	44.61	44.51	43.87	33.27	65.35	77.23	66.69	80- 85	49.95	3508	99.6,99.6
90	0.6752	1.413	1.413	1.409	1.261	6.582	13.54	7.268	85- 90	12.45	3520	100,100
95	0	0	0	0	0	0	0	0	90- 95	0.5264	3521	100,100
100	0	0	0	0	0	0	0	0	95-100	0	3521	100,100
105	0	0	0	0	0	0	0	0	100-105	0	3521	100,100
110	0	0	0	0	0	0	0	0	105-110	0	3521	100,100
115	0	0	0	0	0	0	0	0	110-115	0	3521	100,100
120	0	0	0	0	0	0	0	0	115-120	0	3521	100,100
125	0	0	0	0	0	0	0	0	120-125	0	3521	100,100
130	0	0	0	0	0	0	0	0	125-130	0	3521	100,100
135	0	0	0	0	0	0	0	0	130-135	0	3521	100,100
140	0	0	0	0	0	0	0	0	135-140	0	3521	100,100
145	0	0	0	0	0	0	0	0	140-145	0	3521	100,100
150	0	0	0	0	0	0	0	0	145-150	0	3521	100,100
155	0	0	0	0	0	0	0	0	150-155	0	3521	100,100
160	0	0	0	0	0	0	0	0	155-160	0	3521	100,100
165	0	0	0	0	0	0	0	0	160-165	0	3521	100,100
170	0	0	0	0	0	0	0	0	165-170	0	3521	100,100
175	0	0	0	0	0	0	0	0	170-175	0	3521	100,100
180	0	0	0	0	0	0	0	0	175-180	0	3521	100,100
DEG	LUMINOUS INTENSITY:cd									UNIT:lm		

Conical surface Flux(90deg): 1870.5 lm

%lum = 53.4%
%lamp = 53.4%

Conical surface Flux(120deg): 2758.6 lm

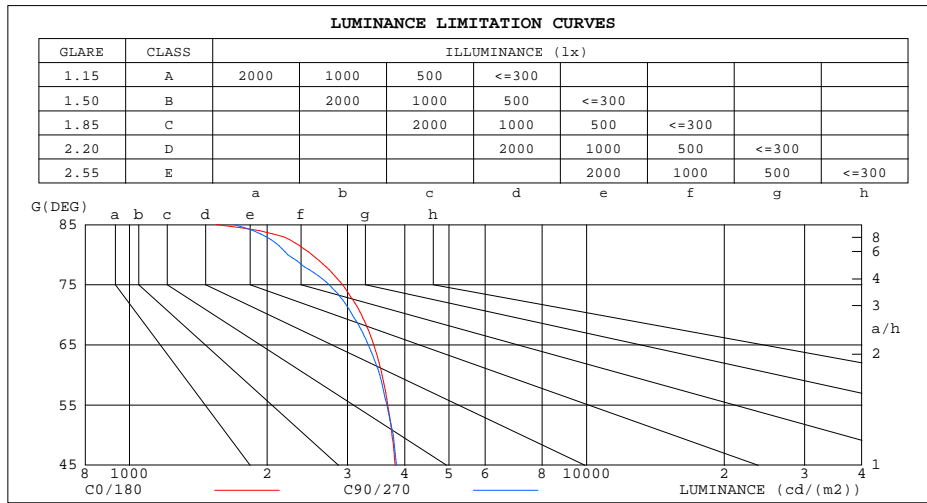
%lum = 78.8%
%lamp = 78.8%

C Range: 0 - 360DEG
C Interval: 5.0DEG
Test Speed: HIGH
Temperature:26DEG
Operators:NEIKO
Test Date:2017-08-30

γ Range: 0 - 180DEG
γ Interval: 0.5DEG
Test System:EVERFINE GO-2000B_V1 SYSTEM V2.0.350
Humidity:60%
Test Distance:12.218m [K=1.0000]
Remarks:

LUMINANCE LIMITATION CURVES

Test:U:120.0V I:0.2280A P:27.37W PF:0.9915 Lamp Flux:3492.48x1 lm		
NAME: ASD Lighting corporation	TYPE:LED PANEL	WEIGHT:
SPEC.:ASD-ELP01-22D2740-PRM	DIM.: 2x2	SERIAL No.:BLD20170830A15
MFR.: ASD Lighting corporation	SUR.:0.55*0.55	Shielding Angle:



LUMINANCE cd/(m2)		
G(DEG)	C0/180	C90/270
85	1548	1691
80	2509	2219
75	2925	2735
70	3218	3075
65	3425	3332
60	3570	3530
55	3674	3655
50	3754	3777
45	3815	3838

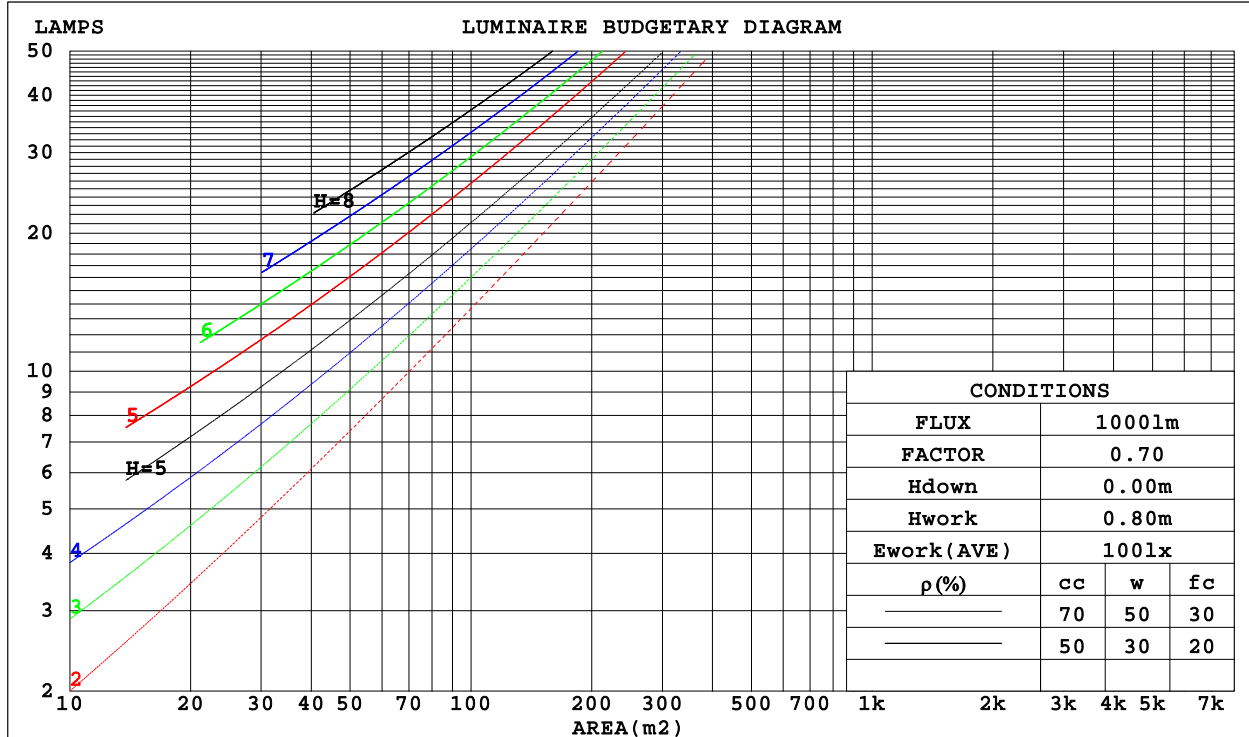
C Range: 0 - 360DEG
 C Interval: 5.0DEG
 Test Speed: HIGH
 Temperature:26DEG
 Operators:NEIKO
 Test Date:2017-08-30

γ Range: 0 - 180DEG
 γ Interval: 0.5DEG
 Test System:EVERFINE GO-2000B_V1 SYSTEM V2.0.350
 Humidity:60%
 Test Distance:12.218m [K=1.0000]
 Remarks:

CU AND LUMINAIRE BUDGETARY ESTIMATE DIAGRAM

Test:U:120.0V I:0.2280A P:27.37W PF:0.9915 Lamp Flux:3492.48x1 lm		
NAME: ASD Lighting corporation	TYPE:LED PANEL	WEIGHT:
SPEC.:ASD-ELP01-22D2740-PRM	DIM.: 2x2	SERIAL No.:BLD20170830A15
MFR.: ASD Lighting corporation	SUR.:0.55*0.55	Shielding Angle:

ρ_{cc}	80%			70%			50%			30%			10%			0
ρ_w	50%	30%	10%	50%	30%	10%	50%	30%	10%	50%	30%	10%	50%	30%	10%	0
ρ_{fc}	20%			20%			20%			20%			20%			0
RCR	RCR:Room Cavity Ratio						Coefficients of Utilization(CU)									
0.0	1.19	1.19	1.19	1.16	1.16	1.16	1.11	1.11	1.11	1.06	1.06	1.06	1.02	1.02	1.02	.00
1.0	1.04	.00	.96	1.02	.98	.94	.97	.94	.91	.93	.91	.88	.90	.88	.86	.84
2.0	.90	.84	.78	.89	.82	.77	.85	.80	.75	.82	.77	.73	.79	.75	.72	.69
3.0	.79	.71	.64	.78	.70	.64	.75	.68	.63	.72	.66	.62	.69	.65	.61	.58
4.0	.70	.61	.55	.69	.61	.54	.66	.59	.53	.64	.58	.53	.62	.56	.52	.50
5.0	.63	.54	.47	.61	.53	.47	.59	.52	.46	.57	.51	.46	.55	.50	.45	.43
6.0	.56	.47	.41	.55	.47	.41	.54	.46	.40	.52	.45	.40	.50	.44	.40	.37
7.0	.51	.42	.36	.50	.42	.36	.49	.41	.36	.47	.40	.35	.46	.40	.35	.33
8.0	.47	.38	.32	.46	.38	.32	.44	.37	.32	.43	.36	.32	.42	.36	.31	.29
9.0	.43	.34	.29	.42	.34	.29	.41	.34	.29	.40	.33	.28	.39	.33	.28	.26
10.0	.39	.31	.26	.39	.31	.26	.38	.31	.26	.37	.30	.26	.36	.30	.26	.24



C Range: 0 - 360DEG
 C Interval: 5.0DEG
 Test Speed: HIGH
 Temperature:26DEG
 Operators:NEIKO
 Test Date:2017-08-30

γ Range: 0 - 180DEG
 γ Interval: 0.5DEG
 Test System:EVERFINE GO-2000B_V1 SYSTEM V2.0.350
 Humidity:60%
 Test Distance:12.218m [K=1.0000]
 Remarks:

WEC AND CCEC

Test:U:120.0V I:0.2280A P:27.37W PF:0.9915 Lamp Flux:3492.48x1 lm		
NAME: ASD Lighting corporation	TYPE:LED PANEL	WEIGHT:
SPEC.:ASD-ELP01-22D2740-PRM	DIM.: 2x2	SERIAL No.:BLD20170830A15
MFR.: ASD Lighting corporation	SUR.:0.55*0.55	Shielding Angle:

pcc	80%			70%			50%			30%			10%			0
pw	50%	30%	10%	50%	30%	10%	50%	30%	10%	50%	30%	10%	50%	30%	10%	0
pfc	20%			20%			20%			20%			20%			0
RCR	RCR:Room Cavity Ratio						Wall Exitance Coefficients(WEC)									
0.0																
1.0	.309	.176	.056	.302	.172	.055	.289	.166	.053	.277	.160	.051	.266	.154	.050	
2.0	.292	.160	.049	.286	.157	.048	.274	.152	.047	.263	.148	.046	.253	.143	.045	
3.0	.270	.144	.043	.265	.142	.043	.255	.138	.042	.245	.134	.041	.236	.131	.040	
4.0	.250	.130	.038	.245	.128	.038	.236	.125	.037	.227	.122	.037	.219	.119	.036	
5.0	.231	.118	.034	.227	.116	.034	.218	.114	.033	.211	.111	.033	.204	.109	.033	
6.0	.214	.107	.031	.210	.106	.031	.203	.104	.030	.196	.102	.030	.190	.100	.030	
7.0	.199	.099	.028	.196	.098	.028	.189	.096	.028	.183	.094	.027	.178	.092	.027	
8.0	.186	.091	.026	.183	.090	.025	.177	.089	.025	.172	.087	.025	.167	.086	.025	
9.0	.174	.084	.024	.172	.084	.023	.166	.082	.023	.162	.081	.023	.157	.080	.023	
10.0	.164	.079	.022	.161	.078	.022	.157	.077	.022	.152	.076	.022	.148	.075	.021	

pcc	80%			70%			50%			30%			10%			0
pw	50%	30%	10%	50%	30%	10%	50%	30%	10%	50%	30%	10%	50%	30%	10%	0
pfc	20%			20%			20%			20%			20%			0
RCR	RCR:Room Cavity Ratio						Ceiling Cavity Exitance Coefficients(CCEC)									
0.0	.191	.191	.191	.163	.163	.163	.111	.111	.111	.064	.064	.064	.020	.020	.020	
1.0	.180	.156	.135	.154	.134	.116	.106	.092	.080	.061	.053	.047	.019	.017	.015	
2.0	.172	.132	.098	.148	.114	.085	.101	.079	.059	.058	.046	.035	.019	.015	.011	
3.0	.165	.114	.074	.141	.099	.064	.097	.069	.045	.056	.040	.027	.018	.013	.009	
4.0	.157	.101	.058	.135	.087	.051	.093	.061	.036	.054	.036	.021	.017	.012	.007	
5.0	.150	.091	.047	.129	.078	.041	.089	.055	.029	.051	.032	.017	.017	.011	.006	
6.0	.143	.082	.039	.123	.071	.034	.085	.050	.024	.049	.029	.014	.016	.010	.005	
7.0	.136	.075	.033	.117	.065	.029	.081	.046	.021	.047	.027	.012	.015	.009	.004	
8.0	.129	.070	.029	.111	.060	.025	.077	.042	.018	.045	.025	.011	.014	.008	.004	
9.0	.123	.065	.025	.106	.056	.022	.074	.039	.016	.043	.023	.009	.014	.008	.003	
10.0	.117	.060	.023	.101	.052	.020	.070	.037	.014	.041	.022	.008	.013	.007	.003	

C Range: 0 - 360DEG
 C Interval: 5.0DEG
 Test Speed: HIGH
 Temperature:26DEG
 Operators:NEIKO
 Test Date:2017-08-30

γ Range: 0 - 180DEG
 γ Interval: 0.5DEG
 Test System:EVERFINE GO-2000B_V1 SYSTEM V2.0.350
 Humidity:60%
 Test Distance:12.218m [K=1.0000]
 Remarks:

UGR(Unified Glare Rating) Table

Test:U:120.0V I:0.2280A P:27.37W PF:0.9915 Lamp Flux:3492.48x1 lm										
NAME: ASD Lighting corporation					TYPE:LED PANEL			WEIGHT:		
SPEC.:ASD-ELP01-22D2740-PRM					DIM.: 2x2			SERIAL No.:BLD20170830A15		
MFR.: ASD Lighting corporation					SUR.:0.55*0.55			Shielding Angle:		
ceiling/cavity	0.7	0.7	0.5	0.5	0.3	0.7	0.7	0.5	0.5	0.3
walls	0.5	0.3	0.5	0.3	0.3	0.5	0.3	0.5	0.3	0.3
working plane	0.2	0.2	0.2	0.2	0.2	0.2	0.2	0.2	0.2	0.2
Room dimensions	Viewed crosswise					Viewed endwise				
x = 2H y = 2H	17.3	18.9	17.6	19.1	19.3	17.3	18.9	17.6	19.1	19.3
3H	18.8	20.2	19.1	20.5	20.7	18.8	20.2	19.1	20.4	20.6
4H	19.4	20.7	19.7	21.0	21.2	19.3	20.6	19.6	20.9	21.1
6H	19.8	21.0	20.1	21.3	21.6	19.6	20.9	19.9	21.1	21.4
8H	19.8	21.1	20.2	21.3	21.6	19.7	20.9	20.0	21.2	21.5
12H	19.9	21.0	20.2	21.3	21.6	19.7	20.9	20.1	21.2	21.5
4H 2H	17.9	19.3	18.2	19.5	19.8	17.9	19.3	18.2	19.5	19.8
3H	19.6	20.8	19.9	21.1	21.4	19.5	20.7	19.9	21.0	21.3
4H	20.3	21.3	20.6	21.7	22.0	20.2	21.2	20.5	21.6	21.9
6H	20.7	21.7	21.1	22.1	22.4	20.6	21.5	21.0	21.9	22.3
8H	20.9	21.7	21.3	22.1	22.5	20.7	21.6	21.1	22.0	22.4
12H	20.9	21.7	21.3	22.1	22.5	20.8	21.6	21.2	22.0	22.4
8H 4H	20.5	21.4	20.9	21.7	22.1	20.4	21.3	20.8	21.7	22.0
6H	21.1	21.8	21.5	22.2	22.7	20.9	21.7	21.4	22.1	22.5
8H	21.3	21.9	21.7	22.4	22.8	21.1	21.8	21.6	22.2	22.7
12H	21.4	21.9	21.9	22.4	22.9	21.3	21.8	21.7	22.3	22.8
12H 4H	20.5	21.3	20.9	21.7	22.1	20.4	21.2	20.8	21.6	22.0
6H	21.1	21.8	21.6	22.2	22.7	21.0	21.6	21.4	22.1	22.5
8H	21.3	21.9	21.8	22.3	22.8	21.2	21.8	21.7	22.2	22.7
Variations with the observer position at spacings:										
S = 1.0H	+ 0.2 / - 0.2					+ 0.2 / - 0.2				
1.5H	+ 0.2 / - 0.3					+ 0.2 / - 0.3				
2.0H	+ 0.2 / - 0.3					+ 0.2 / - 0.3				

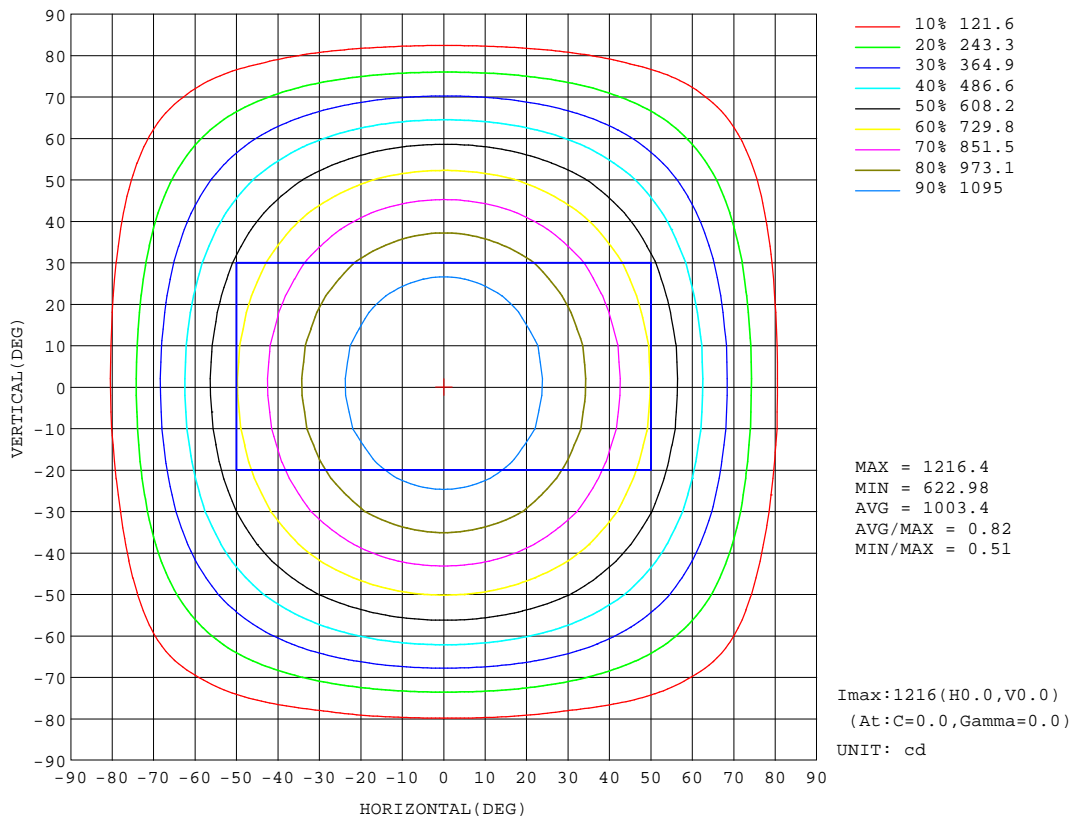
CIE Pub.117 Corrected 3503 lm Total Lamp Luminous Flux.(8log(F/F0) = 4.4)

C Range: 0 - 360DEG
C Interval: 5.0DEG
Test Speed: HIGH
Temperature:26DEG
Operators:NEIKO
Test Date:2017-08-30

γ Range: 0 - 180DEG
 γ Interval: 0.5DEG
Test System:EVERFINE GO-2000B_V1 SYSTEM V2.0.350
Humidity:60%
Test Distance:12.218m [K=1.0000]
Remarks:

ISOCANDELA DIAGRAM

Test:U:120.0V I:0.2280A P:27.37W PF:0.9915 Lamp Flux:3492.48x1 lm		
NAME: ASD Lighting corporation	TYPE:LED PANEL	WEIGHT:
SPEC.:ASD-ELP01-22D2740-PRM	DIM.: 2x2	SERIAL No.:BLD20170830A15
MFR.: ASD Lighting corporation	SUR.:0.55*0.55	Shielding Angle:



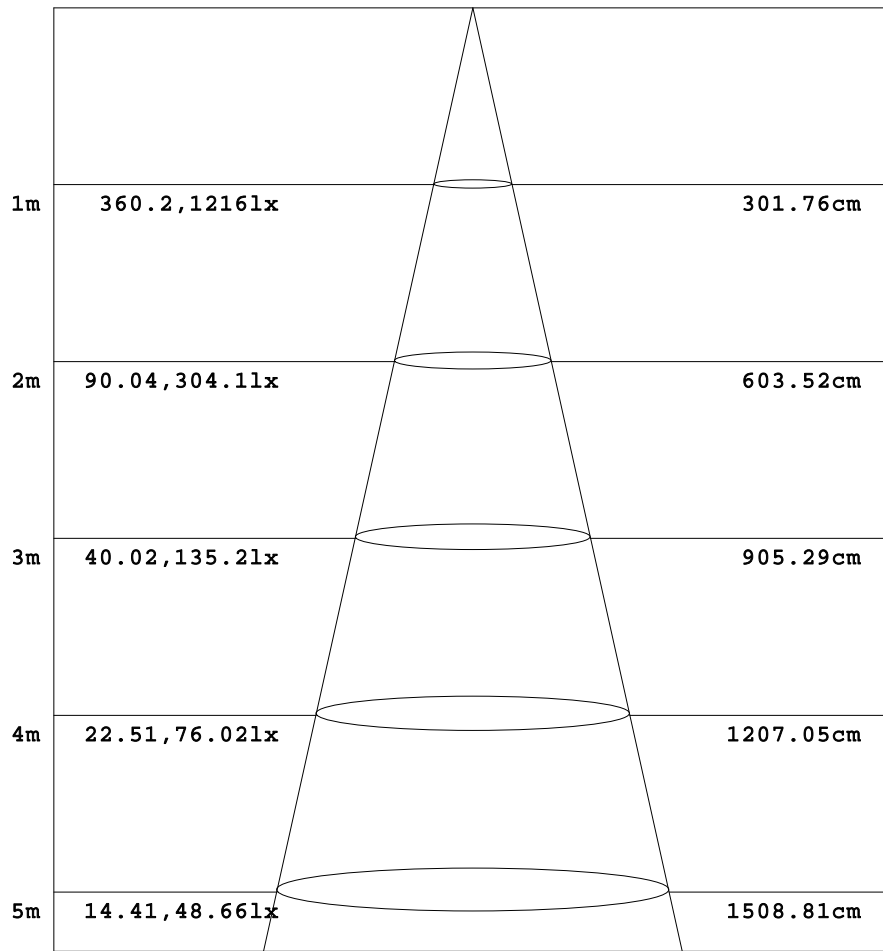
C Range: 0 - 360DEG
 C Interval: 5.0DEG
 Test Speed: HIGH
 Temperature:26DEG
 Operators:NEIKO
 Test Date:2017-08-30

γ Range: 0 - 180DEG
 γ Interval: 0.5DEG
 Test System:EVERFINE GO-2000B_V1 SYSTEM V2.0.350
 Humidity:60%
 Test Distance:12.218m [K=1.0000]
 Remarks:

AAI Figure

Test:U:120.0V I:0.2280A P:27.37W PF:0.9915 Lamp Flux:3492.48x1 lm		
NAME: ASD Lighting corporation	TYPE:LED PANEL	WEIGHT:
SPEC.:ASD-ELP01-22D2740-PRM	DIM.: 2x2	SERIAL No.:BLD20170830A15
MFR.: ASD Lighting corporation	SUR.:0.55*0.55	Shielding Angle:

Flux out:2583 lm



Height Eavg, Emax Angle:112.93deg Diameter

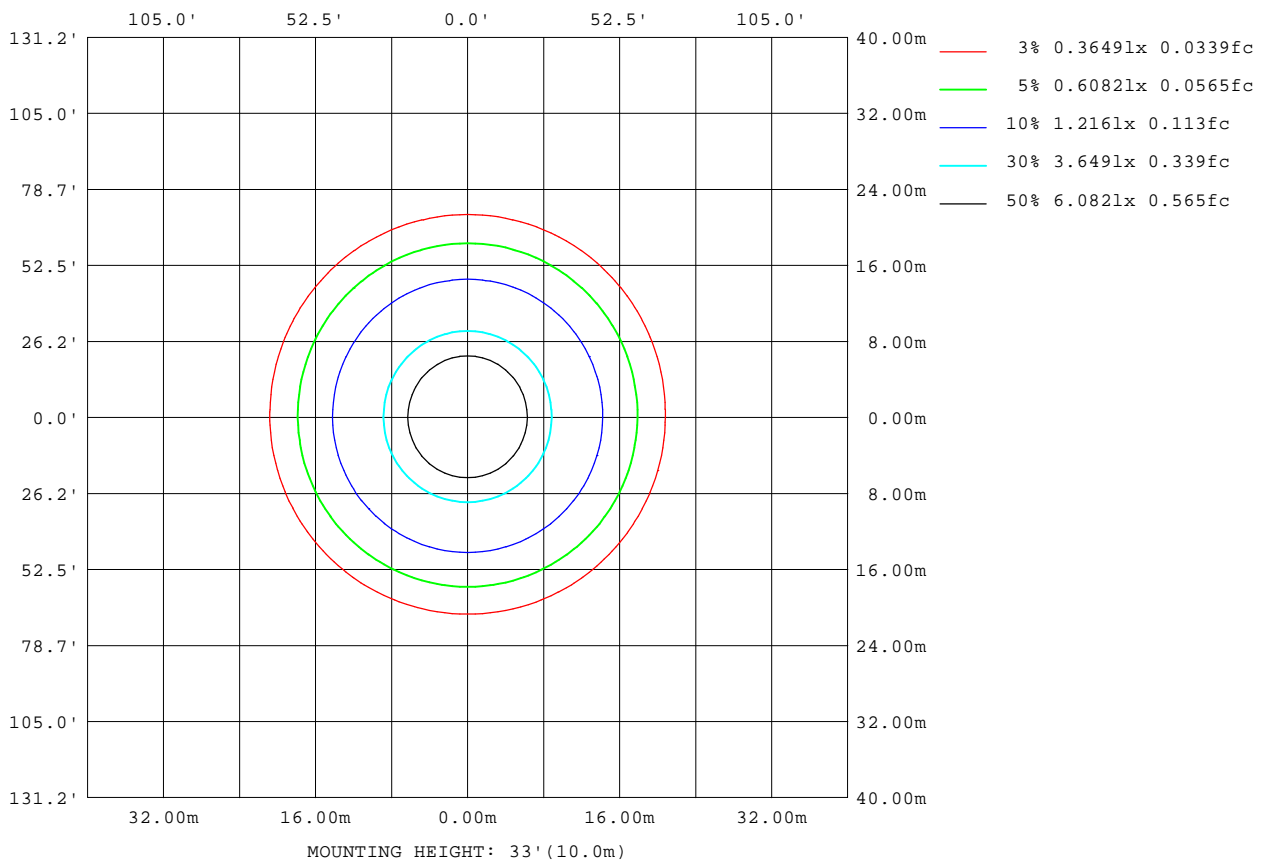
Note:The Curves indicate the illuminated area and the average illumination when the luminaire is at different distance.

C Range: 0 - 360DEG
 C Interval: 5.0DEG
 Test Speed: HIGH
 Temperature:26DEG
 Operators:NEIKO
 Test Date:2017-08-30

γ Range: 0 - 180DEG
 γ Interval: 0.5DEG
 Test System:EVERFINE GO-2000B_V1 SYSTEM V2.0.350
 Humidity:60%
 Test Distance:12.218m [K=1.0000]
 Remarks:

ISOLUX DIAGRAM

Test:U:120.0V I:0.2280A P:27.37W PF:0.9915 Lamp Flux:3492.48x1 lm		
NAME: ASD Lighting corporation	TYPE:LED PANEL	WEIGHT:
SPEC.:ASD-ELP01-22D2740-PRM	DIM.: 2x2	SERIAL No.:BLD20170830A15
MFR.: ASD Lighting corporation	SUR.:0.55*0.55	Shielding Angle:



C Range: 0 - 360DEG
 C Interval: 5.0DEG
 Test Speed: HIGH
 Temperature:26DEG
 Operators:NEIKO
 Test Date:2017-08-30

γ Range: 0 - 180DEG
 γ Interval: 0.5DEG
 Test System:EVERFINE GO-2000B_V1 SYSTEM V2.0.350
 Humidity:60%
 Test Distance:12.218m [K=1.0000]
 Remarks:

LED Avg.L Report

Test:U:120.0V I:0.2280A P:27.37W PF:0.9915 Lamp Flux:3492.48x1 lm		
NAME: ASD Lighting corporation	TYPE:LED PANEL	WEIGHT:
SPEC.:ASD-ELP01-22D2740-PRM	DIM.: 2x2	SERIAL No.:BLD20170830A15
MFR.: ASD Lighting corporation	SUR.:0.55*0.55	Shielding Angle:

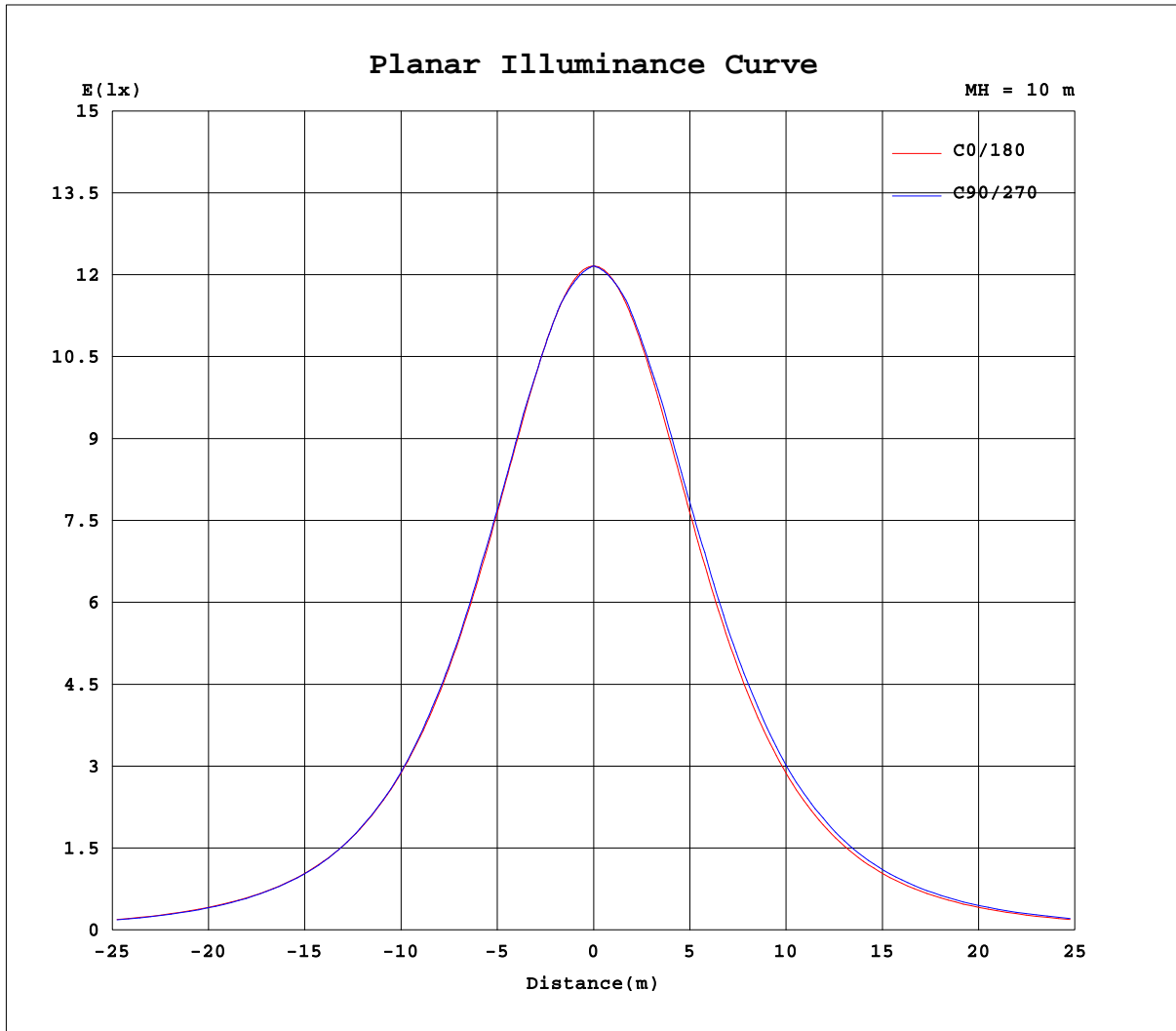
AvgL	cd/m2
L_0~180(65)av	3423
L_0~180(75)av	2919
L_0~180(85)av	1406
L_90~270(65)av	3527
L_90~270(75)av	3055
L_90~270(85)av	2313
L_45(65)av	3474
L_45(75)av	2973
L_45(85)av	2094

Standard: GB/T 29293-2012

C Range: 0 - 360DEG
C Interval: 5.0DEG
Test Speed: HIGH
Temperature:26DEG
Operators:NEIKO
Test Date:2017-08-30

γ Range: 0 - 180DEG
 γ Interval: 0.5DEG
Test System:EVERFINE GO-2000B_V1 SYSTEM V2.0.350
Humidity:60%
Test Distance:12.218m [K=1.0000]
Remarks:

Planar Illuminance Curve



C Range: 0 - 360DEG
 C Interval: 5.0DEG
 Test Speed: HIGH
 Temperature: 26DEG
 Operators: NEIKO
 Test Date: 2017-08-30

γ Range: 0 - 180DEG
 γ Interval: 0.5DEG
 Test System: EVERFINE GO-2000B_V1 SYSTEM V2.0.350
 Humidity: 60%
 Test Distance: 12.218m [K=1.0000]
 Remarks:

LUMINOUS DISTRIBUTION INTENSITY DATA

Test:U:120.0V I:0.2280A P:27.37W PF:0.9915 Lamp Flux:3492.48x1 lm
NAME: ASD Lighting corporation TYPE:LED PANEL WEIGHT:
SPEC.:ASD-ELP01-22D2740-PRM DIM.: 2x2 SERIAL No.:BLD20170830A15
MFR.: ASD Lighting corporation SUR.:0.55*0.55 Shielding Angle:

Table--1 UNIT: cd
C(DEG) \ y (DEG) 0 5 10 15 20 25 30 35 40 45 50 55 60 65 70 75 80 85 90
0 1216 1216 1216 1216 1216 1216 1216 1216 1216 1216 1216 1216 1216 1216 1216 1216 1216 1216 1216
5 1211 1210 1210 1209 1208 1208 1207 1207 1207 1207 1207 1207 1207 1207 1207 1206 1206 1206 1206 1207
10 1195 1194 1192 1191 1191 1191 1191 1191 1191 1192 1192 1193 1194 1195 1195 1196 1196 1197 1197 1197
15 1169 1166 1165 1164 1164 1165 1166 1167 1169 1169 1168 1168 1168 1168 1168 1168 1168 1168 1168 1168
20 1132 1129 1128 1127 1128 1130 1132 1131 1130 1130 1131 1132 1134 1135 1137 1138 1139 1140 1140 1140
25 1085 1082 1081 1082 1084 1084 1083 1083 1084 1087 1090 1090 1090 1090 1090 1091 1091 1092 1092 1092
30 1030 1026 1026 1028 1028 1027 1027 1030 1033 1032 1032 1033 1035 1037 1039 1041 1042 1043 1043 1043
35 966 962 962 965 962 962 966 966 966 965 967 970 974 974 973 973 974 974 975 975
40 894 890 891 890 889 892 891 892 895 898 896 897 898 900 901 903 905 906 906 906
45 815 811 814 810 811 810 811 815 813 814 815 818 819 819 819 819 819 820 820 820
50 729 725 726 724 724 724 727 725 726 729 727 727 728 729 730 732 733 733 733 733
55 636 634 632 633 631 633 631 633 632 632 633 635 635 634 634 633 633 633 633 633
60 539 537 535 533 535 533 534 532 533 534 533 532 532 532 532 533 533 533 533 533
65 437 436 434 433 431 430 429 430 428 428 428 429 428 427 427 426 426 426 426 425
70 332 330 328 327 326 326 324 323 323 322 321 321 320 320 319 319 318 318 318 318
75 229 226 225 223 223 221 219 218 217 216 216 216 216 216 216 215 215 215 214 214
80 132 124 120 123 125 124 122 122 121 120 118 116 116 116 117 117 117 117 117 116
85 40.7 33.1 37.5 42.9 45.2 44.0 43.3 43.9 44.4 44.6 44.7 44.7 44.7 44.9 45.1 45.0 44.8 44.6 44.5
90 0.68 1.57 1.53 1.48 1.45 1.43 1.40 1.38 1.41 1.41 1.41 1.41 1.42 1.44 1.43 1.42 1.41 1.41 1.41
95 0.00 0.00 0.00 0.00 0.00 0.00 0.00 0.00 0.00 0.00 0.00 0.00 0.00 0.00 0.00 0.00 0.00 0.00 0.00
100 0.00 0.00 0.00 0.00 0.00 0.00 0.00 0.00 0.00 0.00 0.00 0.00 0.00 0.00 0.00 0.00 0.00 0.00 0.00
105 0.00 0.00 0.00 0.00 0.00 0.00 0.00 0.00 0.00 0.00 0.00 0.00 0.00 0.00 0.00 0.00 0.00 0.00 0.00
110 0.00 0.00 0.00 0.00 0.00 0.00 0.00 0.00 0.00 0.00 0.00 0.00 0.00 0.00 0.00 0.00 0.00 0.00 0.00
115 0.00 0.00 0.00 0.00 0.00 0.00 0.00 0.00 0.00 0.00 0.00 0.00 0.00 0.00 0.00 0.00 0.00 0.00 0.00
120 0.00 0.00 0.00 0.00 0.00 0.00 0.00 0.00 0.00 0.00 0.00 0.00 0.00 0.00 0.00 0.00 0.00 0.00 0.00
125 0.00 0.00 0.00 0.00 0.00 0.00 0.00 0.00 0.00 0.00 0.00 0.00 0.00 0.00 0.00 0.00 0.00 0.00 0.00
130 0.00 0.00 0.00 0.00 0.00 0.00 0.00 0.00 0.00 0.00 0.00 0.00 0.00 0.00 0.00 0.00 0.00 0.00 0.00
135 0.00 0.00 0.00 0.00 0.00 0.00 0.00 0.00 0.00 0.00 0.00 0.00 0.00 0.00 0.00 0.00 0.00 0.00 0.00
140 0.00 0.00 0.00 0.00 0.00 0.00 0.00 0.00 0.00 0.00 0.00 0.00 0.00 0.00 0.00 0.00 0.00 0.00 0.00
145 0.00 0.00 0.00 0.00 0.00 0.00 0.00 0.00 0.00 0.00 0.00 0.00 0.00 0.00 0.00 0.00 0.00 0.00 0.00
150 0.00 0.00 0.00 0.00 0.00 0.00 0.00 0.00 0.00 0.00 0.00 0.00 0.00 0.00 0.00 0.00 0.00 0.00 0.00
155 0.00 0.00 0.00 0.00 0.00 0.00 0.00 0.00 0.00 0.00 0.00 0.00 0.00 0.00 0.00 0.00 0.00 0.00 0.00
160 0.00 0.00 0.00 0.00 0.00 0.00 0.00 0.00 0.00 0.00 0.00 0.00 0.00 0.00 0.00 0.00 0.00 0.00 0.00
165 0.00 0.00 0.00 0.00 0.00 0.00 0.00 0.00 0.00 0.00 0.00 0.00 0.00 0.00 0.00 0.00 0.00 0.00 0.00
170 0.00 0.00 0.00 0.00 0.00 0.00 0.00 0.00 0.00 0.00 0.00 0.00 0.00 0.00 0.00 0.00 0.00 0.00 0.00
175 0.00 0.00 0.00 0.00 0.00 0.00 0.00 0.00 0.00 0.00 0.00 0.00 0.00 0.00 0.00 0.00 0.00 0.00 0.00
180 0.00 0.00 0.00 0.00 0.00 0.00 0.00 0.00 0.00 0.00 0.00 0.00 0.00 0.00 0.00 0.00 0.00 0.00 0.00

C Range: 0 - 360DEG
C Interval: 5.0DEG
Test Speed: HIGH
Temperature:26DEG
Operators:NEIKO
Test Date:2017-08-30

y Range: 0 - 180DEG
y Interval: 0.5DEG
Test System:EVERFINE GO-2000B_V1 SYSTEM V2.0.350
Humidity:60%
Test Distance:12.218m [K=1.0000]
Remarks:

LUMINOUS DISTRIBUTION INTENSITY DATA

Test:U:120.0V I:0.2280A P:27.37W PF:0.9915 Lamp Flux:3492.48x1 lm		
NAME: ASD Lighting corporation	TYPE:LED PANEL	WEIGHT:
SPEC.:ASD-ELP01-22D2740-PRM	DIM.: 2x2	SERIAL No.:BLD20170830A15
MFR.: ASD Lighting corporation	SUR.:0.55*0.55	Shielding Angle:

Table--2

UNIT: cd

C(DEG) γ (DEG)	95	100	105	110	115	120	125	130	135	140	145	150	155	160	165	170	175	180	185
0	1216	1216	1216	1216	1216	1216	1216	1216	1216	1216	1216	1216	1216	1216	1216	1216	1216	1216	1216
5	1207	1207	1207	1206	1207	1207	1207	1207	1207	1207	1207	1207	1208	1208	1209	1210	1210	1211	1211
10	1197	1196	1196	1195	1195	1194	1193	1192	1192	1191	1191	1190	1191	1191	1191	1192	1194	1195	1194
15	1168	1168	1168	1168	1168	1168	1168	1168	1169	1169	1167	1165	1164	1164	1164	1165	1166	1169	1167
20	1140	1139	1138	1137	1136	1134	1132	1131	1130	1130	1130	1132	1130	1128	1127	1127	1129	1132	1130
25	1092	1091	1091	1091	1090	1090	1091	1090	1087	1085	1083	1083	1084	1083	1081	1080	1082	1086	1083
30	1043	1042	1040	1039	1037	1035	1033	1032	1032	1033	1030	1027	1026	1027	1026	1025	1026	1030	1027
35	974	974	974	973	973	973	973	969	966	965	965	966	962	961	964	961	961	966	963
40	906	905	903	901	899	897	896	895	896	893	891	891	892	888	889	889	888	893	891
45	819	819	819	818	818	818	818	814	812	812	813	809	809	811	808	811	809	814	811
50	733	732	731	729	728	726	726	726	728	724	722	724	722	723	723	723	723	728	726
55	633	633	632	632	632	633	632	630	629	630	631	629	630	629	632	630	631	636	634
60	533	532	532	531	530	530	530	530	531	530	530	532	530	533	533	533	535	539	538
65	425	425	425	425	425	426	426	426	426	426	428	427	429	429	431	433	434	437	437
70	317	317	317	317	318	318	319	319	320	321	321	322	324	324	325	327	329	332	332
75	214	214	214	214	214	214	214	214	214	215	217	218	219	220	221	222	225	228	229
80	116	116	116	116	116	115	115	117	118	119	120	120	122	122	119	114	115	130	131
85	44.5	44.6	44.7	44.8	44.7	44.5	44.4	44.2	43.9	43.4	42.7	41.5	41.5	41.9	38.7	33.7	28.1	33.3	43.7
90	1.41	1.41	1.41	1.41	1.41	1.41	1.41	1.41	1.41	1.40	1.40	1.40	1.40	1.42	1.44	1.43	1.42	1.26	0.84
95	0.00	0.00	0.00	0.00	0.00	0.00	0.00	0.00	0.00	0.00	0.00	0.00	0.00	0.00	0.00	0.00	0.00	0.00	0.00
100	0.00	0.00	0.00	0.00	0.00	0.00	0.00	0.00	0.00	0.00	0.00	0.00	0.00	0.00	0.00	0.00	0.00	0.00	0.00
105	0.00	0.00	0.00	0.00	0.00	0.00	0.00	0.00	0.00	0.00	0.00	0.00	0.00	0.00	0.00	0.00	0.00	0.00	0.00
110	0.00	0.00	0.00	0.00	0.00	0.00	0.00	0.00	0.00	0.00	0.00	0.00	0.00	0.00	0.00	0.00	0.00	0.00	0.00
115	0.00	0.00	0.00	0.00	0.00	0.00	0.00	0.00	0.00	0.00	0.00	0.00	0.00	0.00	0.00	0.00	0.00	0.00	0.00
120	0.00	0.00	0.00	0.00	0.00	0.00	0.00	0.00	0.00	0.00	0.00	0.00	0.00	0.00	0.00	0.00	0.00	0.00	0.00
125	0.00	0.00	0.00	0.00	0.00	0.00	0.00	0.00	0.00	0.00	0.00	0.00	0.00	0.00	0.00	0.00	0.00	0.00	0.00
130	0.00	0.00	0.00	0.00	0.00	0.00	0.00	0.00	0.00	0.00	0.00	0.00	0.00	0.00	0.00	0.00	0.00	0.00	0.00
135	0.00	0.00	0.00	0.00	0.00	0.00	0.00	0.00	0.00	0.00	0.00	0.00	0.00	0.00	0.00	0.00	0.00	0.00	0.00
140	0.00	0.00	0.00	0.00	0.00	0.00	0.00	0.00	0.00	0.00	0.00	0.00	0.00	0.00	0.00	0.00	0.00	0.00	0.00
145	0.00	0.00	0.00	0.00	0.00	0.00	0.00	0.00	0.00	0.00	0.00	0.00	0.00	0.00	0.00	0.00	0.00	0.00	0.00
150	0.00	0.00	0.00	0.00	0.00	0.00	0.00	0.00	0.00	0.00	0.00	0.00	0.00	0.00	0.00	0.00	0.00	0.00	0.00
155	0.00	0.00	0.00	0.00	0.00	0.00	0.00	0.00	0.00	0.00	0.00	0.00	0.00	0.00	0.00	0.00	0.00	0.00	0.00
160	0.00	0.00	0.00	0.00	0.00	0.00	0.00	0.00	0.00	0.00	0.00	0.00	0.00	0.00	0.00	0.00	0.00	0.00	0.00
165	0.00	0.00	0.00	0.00	0.00	0.00	0.00	0.00	0.00	0.00	0.00	0.00	0.00	0.00	0.00	0.00	0.00	0.00	0.00
170	0.00	0.00	0.00	0.00	0.00	0.00	0.00	0.00	0.00	0.00	0.00	0.00	0.00	0.00	0.00	0.00	0.00	0.00	0.00
175	0.00	0.00	0.00	0.00	0.00	0.00	0.00	0.00	0.00	0.00	0.00	0.00	0.00	0.00	0.00	0.00	0.00	0.00	0.00
180	0.00	0.00	0.00	0.00	0.00	0.00	0.00	0.00	0.00	0.00	0.00	0.00	0.00	0.00	0.00	0.00	0.00	0.00	0.00

C Range: 0 - 360DEG
 C Interval: 5.0DEG
 Test Speed: HIGH
 Temperature:26DEG
 Operators:NEIKO
 Test Date:2017-08-30

γ Range: 0 - 180DEG
 γ Interval: 0.5DEG
 Test System:EVERFINE GO-2000B_V1 SYSTEM V2.0.350
 Humidity:60%
 Test Distance:12.218m [K=1.0000]
 Remarks:

LUMINOUS DISTRIBUTION INTENSITY DATA

Test:U:120.0V I:0.2280A P:27.37W PF:0.9915 Lamp Flux:3492.48x1 lm		
NAME: ASD Lighting corporation	TYPE:LED PANEL	WEIGHT:
SPEC.:ASD-ELP01-22D2740-PRM	DIM.: 2x2	SERIAL No.:BLD20170830A15
MFR.: ASD Lighting corporation	SUR.:0.55*0.55	Shielding Angle:

Table--3

UNIT: cd

C(DEG) γ (DEG)	190	195	200	205	210	215	220	225	230	235	240	245	250	255	260	265	270	275	280
0	1216	1216	1216	1216	1216	1216	1216	1216	1216	1216	1216	1216	1216	1216	1216	1216	1216	1216	1216
5	1210	1210	1209	1209	1209	1209	1209	1209	1209	1209	1209	1209	1209	1209	1209	1209	1209	1209	1209
10	1193	1193	1193	1193	1193	1194	1195	1196	1197	1198	1199	1200	1201	1201	1202	1202	1202	1202	1202
15	1166	1166	1167	1168	1170	1172	1174	1175	1175	1175	1175	1176	1176	1177	1177	1178	1178	1178	1177
20	1129	1130	1132	1135	1138	1137	1138	1139	1140	1143	1145	1147	1149	1151	1152	1153	1153	1153	1152
25	1083	1085	1088	1090	1090	1092	1095	1098	1103	1104	1104	1105	1106	1107	1108	1109	1109	1109	1108
30	1028	1031	1033	1034	1036	1041	1045	1046	1047	1049	1052	1055	1058	1061	1063	1064	1065	1064	1063
35	964	969	968	971	977	979	980	983	988	993	994	995	997	998	1000	1000	1001	1001	1000
40	893	895	897	903	904	906	911	916	917	919	923	926	930	933	935	936	937	937	935
45	816	815	821	822	824	831	832	835	839	845	848	849	851	852	854	855	855	855	854
50	729	731	734	736	741	742	747	753	754	757	759	763	766	769	771	772	773	773	772
55	636	642	641	646	648	654	655	658	662	666	669	671	673	674	676	676	677	677	676
60	540	543	546	547	553	554	558	562	564	566	569	572	575	577	579	580	581	581	580
65	440	442	443	447	450	454	456	459	462	466	468	469	472	473	474	475	475	475	475
70	334	337	340	343	345	348	352	354	357	359	361	363	365	367	368	369	369	369	369
75	230	233	235	238	241	244	246	249	252	255	257	259	261	262	263	263	264	264	264
80	133	135	138	140	142	145	148	150	151	153	155	157	159	160	161	162	162	162	162
85	45.5	48.2	53.9	56.2	58.2	60.9	63.2	65.3	67.4	69.3	71.1	72.8	74.1	75.1	76.4	77.1	77.2	77.1	76.6
90	0.86	1.03	2.08	2.98	3.94	4.77	5.66	6.58	7.59	8.59	9.55	10.5	11.3	12.1	13.0	13.5	13.5	13.4	12.9
95	0.00	0.00	0.00	0.00	0.00	0.00	0.00	0.00	0.00	0.00	0.00	0.00	0.00	0.00	0.00	0.00	0.00	0.00	0.00
100	0.00	0.00	0.00	0.00	0.00	0.00	0.00	0.00	0.00	0.00	0.00	0.00	0.00	0.00	0.00	0.00	0.00	0.00	0.00
105	0.00	0.00	0.00	0.00	0.00	0.00	0.00	0.00	0.00	0.00	0.00	0.00	0.00	0.00	0.00	0.00	0.00	0.00	0.00
110	0.00	0.00	0.00	0.00	0.00	0.00	0.00	0.00	0.00	0.00	0.00	0.00	0.00	0.00	0.00	0.00	0.00	0.00	0.00
115	0.00	0.00	0.00	0.00	0.00	0.00	0.00	0.00	0.00	0.00	0.00	0.00	0.00	0.00	0.00	0.00	0.00	0.00	0.00
120	0.00	0.00	0.00	0.00	0.00	0.00	0.00	0.00	0.00	0.00	0.00	0.00	0.00	0.00	0.00	0.00	0.00	0.00	0.00
125	0.00	0.00	0.00	0.00	0.00	0.00	0.00	0.00	0.00	0.00	0.00	0.00	0.00	0.00	0.00	0.00	0.00	0.00	0.00
130	0.00	0.00	0.00	0.00	0.00	0.00	0.00	0.00	0.00	0.00	0.00	0.00	0.00	0.00	0.00	0.00	0.00	0.00	0.00
135	0.00	0.00	0.00	0.00	0.00	0.00	0.00	0.00	0.00	0.00	0.00	0.00	0.00	0.00	0.00	0.00	0.00	0.00	0.00
140	0.00	0.00	0.00	0.00	0.00	0.00	0.00	0.00	0.00	0.00	0.00	0.00	0.00	0.00	0.00	0.00	0.00	0.00	0.00
145	0.00	0.00	0.00	0.00	0.00	0.00	0.00	0.00	0.00	0.00	0.00	0.00	0.00	0.00	0.00	0.00	0.00	0.00	0.00
150	0.00	0.00	0.00	0.00	0.00	0.00	0.00	0.00	0.00	0.00	0.00	0.00	0.00	0.00	0.00	0.00	0.00	0.00	0.00
155	0.00	0.00	0.00	0.00	0.00	0.00	0.00	0.00	0.00	0.00	0.00	0.00	0.00	0.00	0.00	0.00	0.00	0.00	0.00
160	0.00	0.00	0.00	0.00	0.00	0.00	0.00	0.00	0.00	0.00	0.00	0.00	0.00	0.00	0.00	0.00	0.00	0.00	0.00
165	0.00	0.00	0.00	0.00	0.00	0.00	0.00	0.00	0.00	0.00	0.00	0.00	0.00	0.00	0.00	0.00	0.00	0.00	0.00
170	0.00	0.00	0.00	0.00	0.00	0.00	0.00	0.00	0.00	0.00	0.00	0.00	0.00	0.00	0.00	0.00	0.00	0.00	0.00
175	0.00	0.00	0.00	0.00	0.00	0.00	0.00	0.00	0.00	0.00	0.00	0.00	0.00	0.00	0.00	0.00	0.00	0.00	0.00
180	0.00	0.00	0.00	0.00	0.00	0.00	0.00	0.00	0.00	0.00	0.00	0.00	0.00	0.00	0.00	0.00	0.00	0.00	0.00

C Range: 0 - 360DEG
 C Interval: 5.0DEG
 Test Speed: HIGH
 Temperature:26DEG
 Operators:NEIKO
 Test Date:2017-08-30

γ Range: 0 - 180DEG
 γ Interval: 0.5DEG
 Test System:EVERFINE GO-2000B_V1 SYSTEM V2.0.350
 Humidity:60%
 Test Distance:12.218m [K=1.0000]
 Remarks:

LUMINOUS DISTRIBUTION INTENSITY DATA

Test:U:120.0V I:0.2280A P:27.37W PF:0.9915 Lamp Flux:3492.48x1 lm		
NAME: ASD Lighting corporation	TYPE:LED PANEL	WEIGHT:
SPEC.:ASD-ELP01-22D2740-PRM	DIM.: 2x2	SERIAL No.:BLD20170830A15
MFR.: ASD Lighting corporation	SUR.:0.55*0.55	Shielding Angle:

Table--4

UNIT: cd

C(DEG) γ (DEG)	285	290	295	300	305	310	315	320	325	330	335	340	345	350	355				
0	1216	1216	1216	1216	1216	1216	1216	1216	1216	1216	1216	1216	1216	1216	1216				
5	1209	1209	1209	1209	1209	1209	1209	1209	1209	1209	1209	1209	1210	1210	1211				
10	1201	1201	1200	1199	1198	1197	1196	1195	1194	1194	1193	1193	1193	1193	1194				
15	1177	1177	1176	1176	1175	1175	1175	1175	1173	1170	1168	1167	1166	1166	1167				
20	1151	1149	1147	1145	1143	1141	1139	1138	1138	1139	1136	1133	1131	1130	1130				
25	1107	1107	1106	1105	1104	1103	1099	1095	1093	1091	1091	1090	1086	1084	1084				
30	1061	1059	1056	1053	1050	1048	1046	1046	1042	1037	1035	1035	1033	1029	1028				
35	999	998	997	996	995	989	985	981	980	978	972	970	971	966	964				
40	933	930	927	924	921	919	918	913	908	905	904	899	897	896	892				
45	853	852	850	849	846	841	837	834	834	827	824	822	818	819	813				
50	770	767	764	761	758	756	755	749	745	744	739	736	733	732	728				
55	675	674	673	671	669	665	661	658	656	651	649	644	643	639	637				
60	578	576	574	572	569	567	566	561	557	555	550	550	544	542	541				
65	474	473	472	470	469	465	461	458	456	452	449	445	444	441	439				
70	368	367	366	364	362	359	357	354	350	347	345	341	338	336	334				
75	263	262	261	259	257	254	251	248	246	243	240	238	235	232	230				
80	161	160	159	156	154	153	151	149	147	144	142	140	138	135	133				
85	75.6	74.6	73.4	71.9	70.2	68.5	66.7	64.8	62.6	60.1	58.6	56.8	51.6	48.4	46.6				
90	12.1	11.4	10.7	9.85	9.03	8.10	7.27	6.53	5.67	4.49	3.47	2.17	0.83	0.83	0.83				
95	0.00	0.00	0.00	0.00	0.00	0.00	0.00	0.00	0.00	0.00	0.00	0.00	0.00	0.00	0.00				
100	0.00	0.00	0.00	0.00	0.00	0.00	0.00	0.00	0.00	0.00	0.00	0.00	0.00	0.00	0.00				
105	0.00	0.00	0.00	0.00	0.00	0.00	0.00	0.00	0.00	0.00	0.00	0.00	0.00	0.00	0.00				
110	0.00	0.00	0.00	0.00	0.00	0.00	0.00	0.00	0.00	0.00	0.00	0.00	0.00	0.00	0.00				
115	0.00	0.00	0.00	0.00	0.00	0.00	0.00	0.00	0.00	0.00	0.00	0.00	0.00	0.00	0.00				
120	0.00	0.00	0.00	0.00	0.00	0.00	0.00	0.00	0.00	0.00	0.00	0.00	0.00	0.00	0.00				
125	0.00	0.00	0.00	0.00	0.00	0.00	0.00	0.00	0.00	0.00	0.00	0.00	0.00	0.00	0.00				
130	0.00	0.00	0.00	0.00	0.00	0.00	0.00	0.00	0.00	0.00	0.00	0.00	0.00	0.00	0.00				
135	0.00	0.00	0.00	0.00	0.00	0.00	0.00	0.00	0.00	0.00	0.00	0.00	0.00	0.00	0.00				
140	0.00	0.00	0.00	0.00	0.00	0.00	0.00	0.00	0.00	0.00	0.00	0.00	0.00	0.00	0.00				
145	0.00	0.00	0.00	0.00	0.00	0.00	0.00	0.00	0.00	0.00	0.00	0.00	0.00	0.00	0.00				
150	0.00	0.00	0.00	0.00	0.00	0.00	0.00	0.00	0.00	0.00	0.00	0.00	0.00	0.00	0.00				
155	0.00	0.00	0.00	0.00	0.00	0.00	0.00	0.00	0.00	0.00	0.00	0.00	0.00	0.00	0.00				
160	0.00	0.00	0.00	0.00	0.00	0.00	0.00	0.00	0.00	0.00	0.00	0.00	0.00	0.00	0.00				
165	0.00	0.00	0.00	0.00	0.00	0.00	0.00	0.00	0.00	0.00	0.00	0.00	0.00	0.00	0.00				
170	0.00	0.00	0.00	0.00	0.00	0.00	0.00	0.00	0.00	0.00	0.00	0.00	0.00	0.00	0.00				
175	0.00	0.00	0.00	0.00	0.00	0.00	0.00	0.00	0.00	0.00	0.00	0.00	0.00	0.00	0.00				
180	0.00	0.00	0.00	0.00	0.00	0.00	0.00	0.00	0.00	0.00	0.00	0.00	0.00	0.00	0.00				

C Range: 0 - 360DEG
 C Interval: 5.0DEG
 Test Speed: HIGH
 Temperature:26DEG
 Operators:NEIKO
 Test Date:2017-08-30

γ Range: 0 - 180DEG
 γ Interval: 0.5DEG
 Test System:EVERFINE GO-2000B_V1 SYSTEM V2.0.350
 Humidity:60%
 Test Distance:12.218m [K=1.0000]
 Remarks: