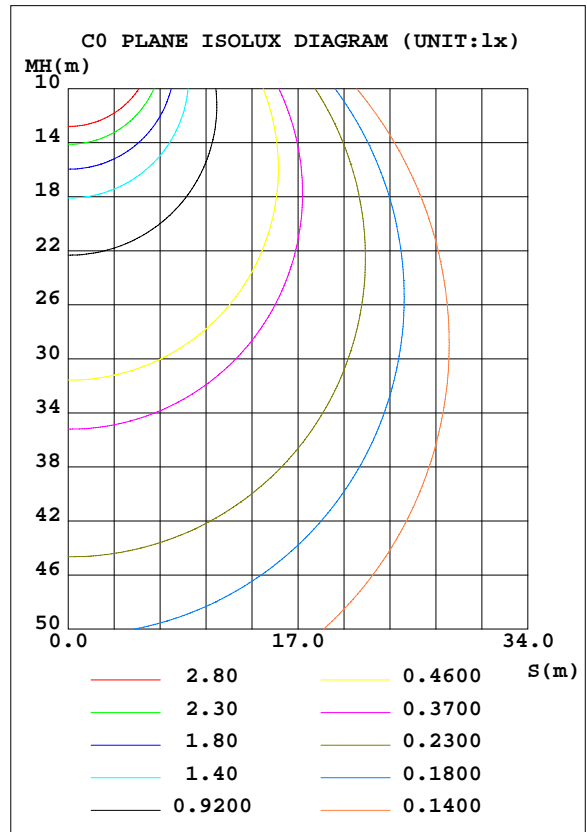
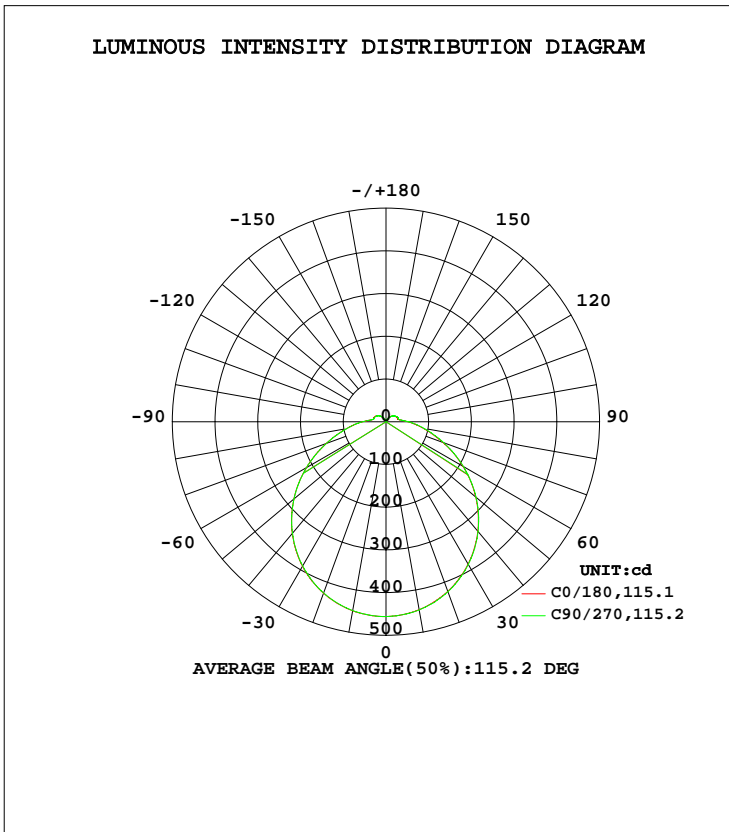


LUMINAIRE PHOTOMETRIC TEST REPORT

Test:U:120.0V I:0.1648A P:19.39W PF:0.9804 Lamp Flux:1570.78x1 lm		
NAME: ASD-LFMDR-MV-14N21CC-MS-XX	TYPE:N/A	WEIGHT:N/A
SPEC.:	DIM.: N/A	SERIAL No.:N/A
MFR.: ASD Lighting corp	SUR.:N/A	Shielding Angle:N/A

DATA OF LAMP		PHOTOMETRIC DATA Eff: 81.01 lm/W			
MODEL	LFMDR-MV-14N21CC-MS-XX	I <sub>max</sub> (cd)	456.2	S/MH(C0/180)	1.26
NOMINAL POWER(W)	21	LOR(%)	100.0	S/MH(C90/270)	1.26
RATED VOLTAGE(V)	120	TOTAL FLUX(lm)	1570.8	η UP, DN(C0-180)	4.9,45.6
NOMINAL FLUX(lm)	1570.78	CIE CLASS	DIRECT	η UP, DN(C180-360)	4.7,44.8
LAMPS INSIDE	1	η up(%)	9.6	CIBSE SHR NOM	1.25
TEST VOLTAGE(V)	120	η down(%)	90.4	CIBSE SHR MAX	1.35



C Range: 0 - 360DEG  
 C Interval: 22.5DEG  
 Test Speed: 10.0deg/s  
 Temperature:24.8DEG  
 Operators:East  
 Test Date:2020-09-09

γ Range: 0 - 180DEG  
 γ Interval: 1.0DEG  
 Test System:EVERFINE GO-R5000\_V2 SYSTEM V2.0.351  
 Humidity:35%  
 Test Distance:2.492m [K=1.0000]  
 Remarks:

ZONAL FLUX DIAGRAM

ZONAL FLUX DIAGRAM:

γ	C0	C45	C90	C135	C180	C225	C270	C315	γ	Φ zone	Φ total	%lum, lamp
10	449.2	449.4	448.8	447.5	446.7	446.9	447.3	447.9	0- 10	43.14	43.14	2.75,2.75
20	427.2	427.8	426.8	424.5	422.7	422.4	423.4	425.3	10- 20	123.7	166.9	10.6,10.6
30	390.8	391.5	390.0	387.3	384.6	384.0	385.5	388.0	20- 30	188.1	355.0	22.6,22.6
40	341.3	342.3	340.7	337.8	334.5	333.8	335.2	338.0	30- 40	227.9	582.9	37.1,37.1
50	281.5	283.1	281.2	278.6	274.4	273.4	275.3	278.1	40- 50	238.5	821.3	52.3,52.3
60	215.2	216.9	214.9	211.9	208.0	207.2	209.1	211.8	50- 60	219.5	1041	66.3,66.3
70	148.7	150.6	148.5	145.9	142.4	142.0	143.9	145.7	60- 70	176.7	1218	77.5,77.5
80	94.23	96.44	93.77	91.60	88.77	88.72	90.65	90.96	70- 80	124.1	1342	85.4,85.4
90	54.90	57.81	55.07	53.06	51.52	51.50	52.40	52.57	80- 90	78.12	1420	90.4,90.4
100	32.04	33.14	31.97	31.03	30.27	30.70	30.91	31.16	90-100	44.34	1464	93.2,93.2
110	29.73	30.82	28.93	28.39	28.17	28.53	29.81	28.82	100-110	31.41	1495	95.2,95.2
120	26.94	27.96	26.39	25.68	25.34	25.24	26.27	26.02	110-120	27.73	1523	97,97
130	21.77	23.05	21.66	21.35	20.94	20.54	21.45	20.95	120-130	21.53	1545	98.3,98.3
140	15.49	17.26	15.60	15.76	15.21	14.56	15.21	14.62	130-140	14.43	1559	99.3,99.3
150	8.816	9.553	9.168	9.499	8.803	8.276	8.327	8.574	140-150	7.684	1567	99.8,99.8
160	4.030	4.431	4.546	4.415	3.772	3.669	3.698	3.894	150-160	2.921	1570	99.9,99.9
170	2.107	2.542	2.487	2.353	1.906	1.757	1.747	2.063	160-170	0.8446	1571	100,100
180	0.7003	0.7134	0.6776	0.3258	0.7177	0.7154	0.7119	0.7085	170-180	0.1466	1571	100,100
DEG	LUMINOUS INTENSITY:cd Less than 25% Percent = 11.1 %									UNIT:lm		

Conical surface Flux(90deg): 702.67 lm

%lum = 44.7%  
%lamp = 44.7%

Conical surface Flux(120deg): 1040.9 lm

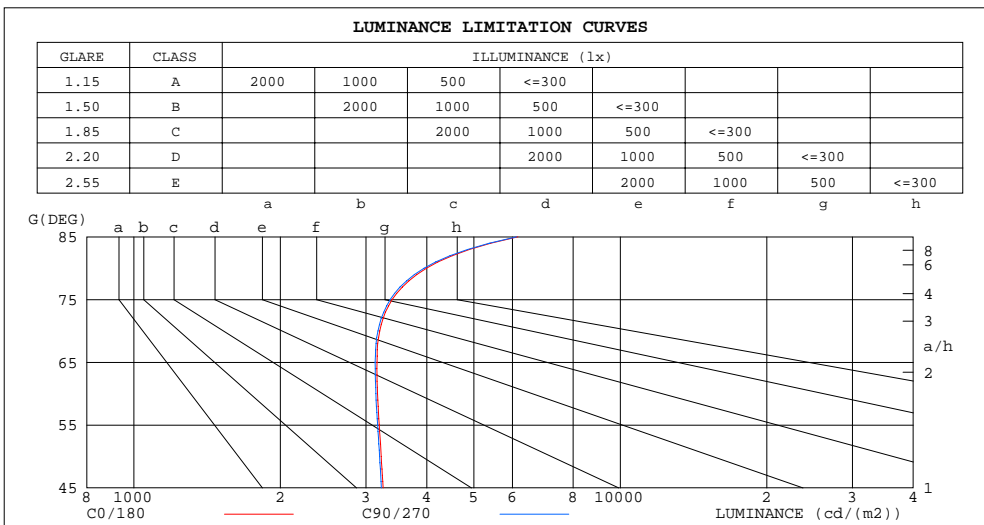
%lum = 66.3%  
%lamp = 66.3%

C Range: 0 - 360DEG  
C Interval: 22.5DEG  
Test Speed: 10.0deg/s  
Temperature:24.8DEG  
Operators:East  
Test Date:2020-09-09

γ Range: 0 - 180DEG  
γ Interval: 1.0DEG  
Test System:EVERFINE GO-R5000\_V2 SYSTEM V2.0.351  
Humidity:35%  
Test Distance:2.492m [K=1.0000]  
Remarks:

LUMINANCE LIMITATION CURVES

Test:U:120.0V I:0.1648A P:19.39W PF:0.9804 Lamp Flux:1570.78x1 lm		
NAME: ASD-LFMDR-MV-14N21CC-MS-XX	TYPE:N/A	WEIGHT:N/A
SPEC.:	DIM.: N/A	SERIAL No.:N/A
MFR.: ASD Lighting corp	SUR.:N/A	Shielding Angle:N/A



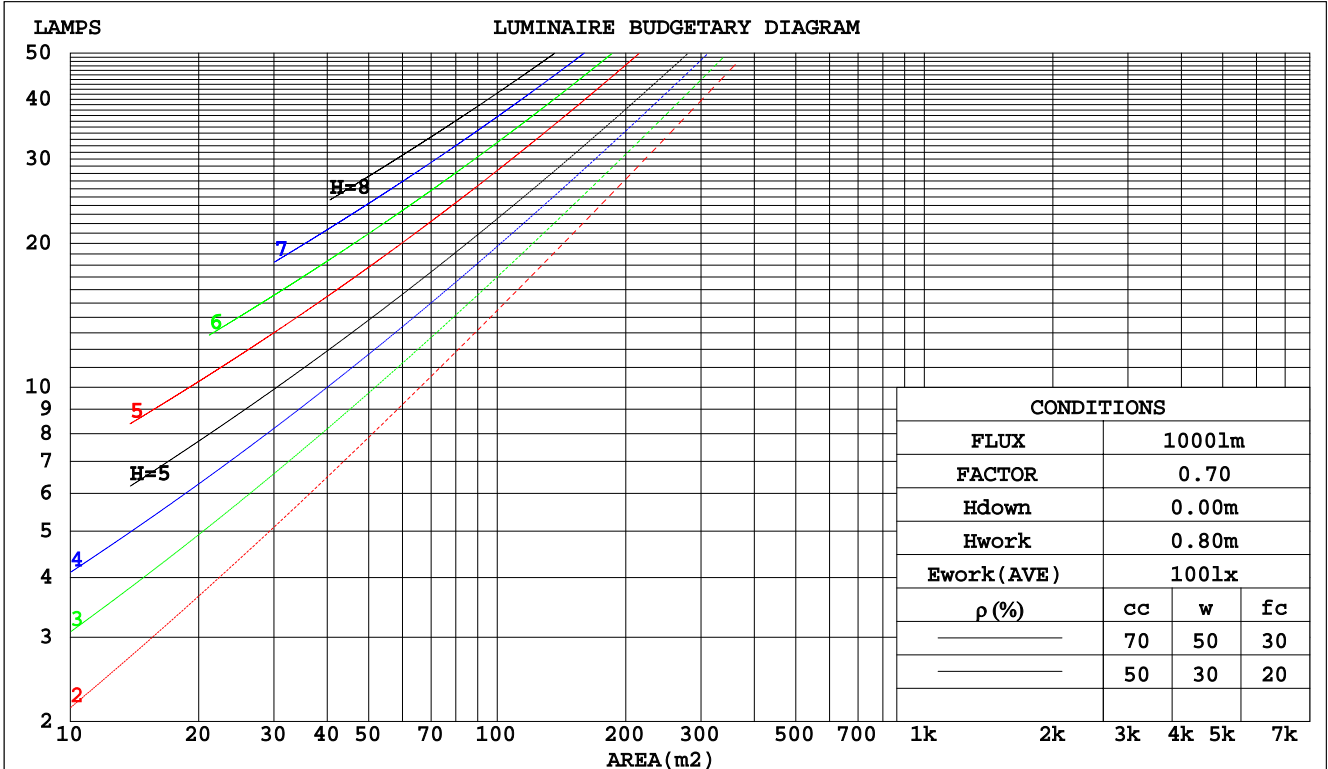
C Range: 0 - 360DEG  
 C Interval: 22.5DEG  
 Test Speed: 10.0deg/s  
 Temperature:24.8DEG  
 Operators:East  
 Test Date:2020-09-09

γ Range: 0 - 180DEG  
 γ Interval: 1.0DEG  
 Test System:EVERFINE GO-R5000\_V2 SYSTEM V2.0.351  
 Humidity:35%  
 Test Distance:2.492m [K=1.0000]  
 Remarks:

CU AND LUMINAIRE BUDGETARY ESTIMATE DIAGRAM

Test:U:120.0V I:0.1648A P:19.39W PF:0.9804 Lamp Flux:1570.78x1 lm		
NAME: ASD-LFMDR-MV-14N21CC-MS-XX	TYPE:N/A	WEIGHT:N/A
SPEC.:	DIM.: N/A	SERIAL No.:N/A
MFR.: ASD Lighting corp	SUR.:N/A	Shielding Angle:N/A

pcc	80%			70%			50%			30%			10%			0
	50%	30%	10%	50%	30%	10%	50%	30%	10%	50%	30%	10%	50%	30%	10%	0
pw																0
pfc	20%			20%			20%			20%			20%			0
RCR	RCR:Room Cavity Ratio						Coefficients of Utilization(CU)									
0.0	1.17	1.17	1.17	1.13	1.13	1.13	1.06	1.06	1.06	.99	.99	.99	.93	.93	.93	.90
1.0	.00	.95	.90	.96	.92	.88	.90	.87	.84	.85	.82	.79	.80	.77	.75	.72
2.0	.86	.79	.73	.83	.77	.71	.78	.73	.68	.73	.69	.65	.69	.65	.62	.59
3.0	.75	.67	.60	.73	.65	.59	.69	.62	.56	.64	.59	.54	.61	.56	.52	.49
4.0	.66	.57	.50	.64	.56	.50	.61	.54	.48	.57	.51	.46	.54	.49	.45	.42
5.0	.59	.50	.43	.58	.49	.43	.54	.47	.41	.51	.45	.40	.48	.43	.39	.36
6.0	.53	.44	.38	.52	.43	.37	.49	.41	.36	.46	.40	.35	.44	.38	.34	.31
7.0	.48	.39	.33	.47	.39	.33	.44	.37	.32	.42	.36	.31	.40	.34	.30	.28
8.0	.44	.35	.29	.43	.35	.29	.41	.33	.28	.39	.32	.27	.37	.31	.27	.25
9.0	.40	.32	.26	.39	.31	.26	.37	.30	.25	.36	.29	.25	.34	.28	.24	.22
10.0	.37	.29	.24	.36	.29	.24	.35	.28	.23	.33	.27	.22	.31	.26	.22	.20



C Range: 0 - 360DEG  
 C Interval: 22.5DEG  
 Test Speed: 10.0deg/s  
 Temperature:24.8DEG  
 Operators:East  
 Test Date:2020-09-09

γ Range: 0 - 180DEG  
 γ Interval: 1.0DEG  
 Test System:EVERFINE GO-R5000\_V2 SYSTEM V2.0.351  
 Humidity:35%  
 Test Distance:2.492m [K=1.0000]  
 Remarks:

WEC AND CCEC

Test:U:120.0V I:0.1648A P:19.39W PF:0.9804 Lamp Flux:1570.78x1 lm		
NAME: ASD-LFMDR-MV-14N21CC-MS-XX	TYPE:N/A	WEIGHT:N/A
SPEC.:	DIM.: N/A	SERIAL No.:N/A
MFR.: ASD Lighting corp	SUR.:N/A	Shielding Angle:N/A

ρcc	80%			70%			50%			30%			10%			0
ρw	50%	30%	10%	50%	30%	10%	50%	30%	10%	50%	30%	10%	50%	30%	10%	0
ρfc	20%			20%			20%			20%			20%			0
RCR	RCR:Room Cavity Ratio						Wall Exitance Coefficients(WEC)									
0.0																
1.0	.347	.197	.063	.337	.192	.061	.318	.182	.058	.301	.173	.056	.285	.165	.053	
2.0	.311	.170	.052	.302	.166	.051	.285	.158	.049	.269	.151	.047	.255	.144	.045	
3.0	.281	.150	.045	.273	.146	.044	.258	.140	.042	.244	.134	.041	.231	.128	.040	
4.0	.256	.133	.039	.249	.130	.038	.235	.125	.037	.223	.119	.036	.211	.114	.035	
5.0	.235	.120	.035	.228	.117	.034	.216	.112	.033	.204	.108	.032	.194	.104	.031	
6.0	.216	.109	.031	.211	.106	.031	.199	.102	.030	.189	.098	.029	.179	.094	.028	
7.0	.201	.099	.028	.195	.097	.028	.185	.094	.027	.176	.090	.026	.167	.087	.025	
8.0	.187	.091	.026	.182	.090	.025	.173	.086	.025	.164	.083	.024	.156	.080	.023	
9.0	.175	.084	.024	.170	.083	.023	.162	.080	.023	.154	.077	.022	.146	.074	.021	
10.0	.164	.079	.022	.160	.077	.022	.152	.074	.021	.145	.072	.020	.138	.069	.020	

ρcc	80%			70%			50%			30%			10%			0
ρw	50%	30%	10%	50%	30%	10%	50%	30%	10%	50%	30%	10%	50%	30%	10%	0
ρfc	20%			20%			20%			20%			20%			0
RCR	RCR:Room Cavity Ratio						Ceiling Cavity Exitance Coefficients(CCEC)									
0.0	.264	.264	.264	.225	.225	.225	.154	.154	.154	.088	.088	.088	.028	.028	.028	
1.0	.257	.230	.205	.220	.197	.177	.150	.136	.122	.086	.078	.071	.028	.025	.023	
2.0	.249	.206	.170	.213	.177	.147	.146	.123	.103	.084	.071	.060	.027	.023	.020	
3.0	.241	.189	.147	.207	.163	.128	.142	.113	.090	.082	.066	.053	.026	.021	.017	
4.0	.234	.176	.132	.200	.152	.115	.138	.106	.081	.080	.062	.048	.026	.020	.016	
5.0	.226	.166	.122	.194	.144	.106	.134	.100	.075	.077	.059	.044	.025	.019	.015	
6.0	.219	.158	.114	.188	.137	.100	.130	.096	.070	.075	.056	.042	.024	.018	.014	
7.0	.212	.151	.109	.182	.131	.095	.126	.092	.067	.073	.054	.040	.024	.018	.013	
8.0	.205	.146	.104	.177	.126	.091	.122	.089	.065	.071	.052	.039	.023	.017	.013	
9.0	.199	.141	.101	.172	.122	.088	.119	.086	.063	.069	.051	.037	.022	.017	.012	
10.0	.193	.136	.099	.167	.118	.086	.116	.083	.061	.067	.049	.036	.022	.016	.012	

C Range: 0 - 360DEG  
 C Interval: 22.5DEG  
 Test Speed: 10.0deg/s  
 Temperature:24.8DEG  
 Operators:East  
 Test Date:2020-09-09

γ Range: 0 - 180DEG  
 γ Interval: 1.0DEG  
 Test System:EVERFINE GO-R5000\_V2 SYSTEM V2.0.351  
 Humidity:35%  
 Test Distance:2.492m [K=1.0000]  
 Remarks:

UGR(Unified Glare Rating) Table

Test:U:120.0V I:0.1648A P:19.39W PF:0.9804 Lamp Flux:1570.78x1 lm										
NAME: ASD-LFMDR-MV-14N21CC-MS-XX					TYPE:N/A			WEIGHT:N/A		
SPEC.:					DIM.: N/A			SERIAL No.:N/A		
MFR.: ASD Lighting corp					SUR.:N/A			Shielding Angle:N/A		
ceiling/cavity	0.7	0.7	0.5	0.5	0.3	0.7	0.7	0.5	0.5	0.3
walls	0.5	0.3	0.5	0.3	0.3	0.5	0.3	0.5	0.3	0.3
working plane	0.2	0.2	0.2	0.2	0.2	0.2	0.2	0.2	0.2	0.2
Room dimensions	Viewed crosswise					Viewed endwise				
x = 2H y = 2H	16.3	17.8	16.7	18.1	18.5	16.3	17.7	16.7	18.1	18.5
3H	18.1	19.4	18.5	19.8	20.2	18.1	19.4	18.5	19.8	20.2
4H	19.0	20.2	19.4	20.6	21.1	18.9	20.2	19.4	20.6	21.0
6H	19.8	21.0	20.3	21.4	21.9	19.8	21.0	20.2	21.4	21.9
8H	20.3	21.4	20.8	21.9	22.4	20.2	21.4	20.7	21.8	22.3
12H	20.8	21.9	21.3	22.4	22.9	20.8	21.8	21.2	22.3	22.8
4H 2H	17.0	18.2	17.4	18.6	19.1	16.9	18.2	17.4	18.6	19.1
3H	18.9	20.0	19.4	20.5	21.0	18.9	20.0	19.4	20.5	21.0
4H	20.0	21.0	20.5	21.5	22.0	19.9	20.9	20.4	21.4	22.0
6H	21.0	21.9	21.6	22.4	23.0	21.0	21.9	21.5	22.4	23.0
8H	21.6	22.4	22.1	23.0	23.5	21.5	22.4	22.1	22.9	23.5
12H	22.2	23.0	22.8	23.5	24.2	22.2	22.9	22.7	23.5	24.1
8H 4H	20.4	21.2	20.9	21.7	22.3	20.3	21.2	20.9	21.7	22.3
6H	21.7	22.4	22.3	22.9	23.6	21.6	22.3	22.2	22.9	23.5
8H	22.4	23.0	23.0	23.6	24.3	22.4	23.0	23.0	23.6	24.2
12H	23.3	23.8	23.9	24.4	25.1	23.2	23.8	23.8	24.4	25.0
12H 4H	20.4	21.2	21.0	21.8	22.4	20.4	21.2	21.0	21.7	22.3
6H	21.8	22.5	22.4	23.1	23.7	21.8	22.4	22.4	23.0	23.7
8H	22.7	23.2	23.3	23.8	24.5	22.6	23.2	23.3	23.8	24.5
Variations with the observer position at spacings:										
S = 1.0H	+ 0.1 / - 0.2					+ 0.1 / - 0.2				
1.5H	+ 0.2 / - 0.3					+ 0.2 / - 0.3				
2.0H	+ 0.2 / - 0.3					+ 0.2 / - 0.3				

CIE Pub.117 Corrected 1571 lm Total Lamp Luminous Flux.(8log(F/F0) = 1.6)

C Range: 0 - 360DEG  
 C Interval: 22.5DEG  
 Test Speed: 10.0deg/s  
 Temperature:24.8DEG  
 Operators:East  
 Test Date:2020-09-09

γ Range: 0 - 180DEG  
 γ Interval: 1.0DEG  
 Test System:EVERFINE GO-R5000\_V2 SYSTEM V2.0.351  
 Humidity:35%  
 Test Distance:2.492m [K=1.0000]  
 Remarks:

UTILIZATION FACTORS TABLE

Test:U:120.0V I:0.1648A P:19.39W PF:0.9804 Lamp Flux:1570.78x1 lm		
NAME: ASD-LFMDR-MV-14N21CC-MS-XX	TYPE:N/A	WEIGHT:N/A
SPEC.:	DIM.: N/A	SERIAL No.:N/A
MFR.: ASD Lighting corp	SUR.:N/A	Shielding Angle:N/A

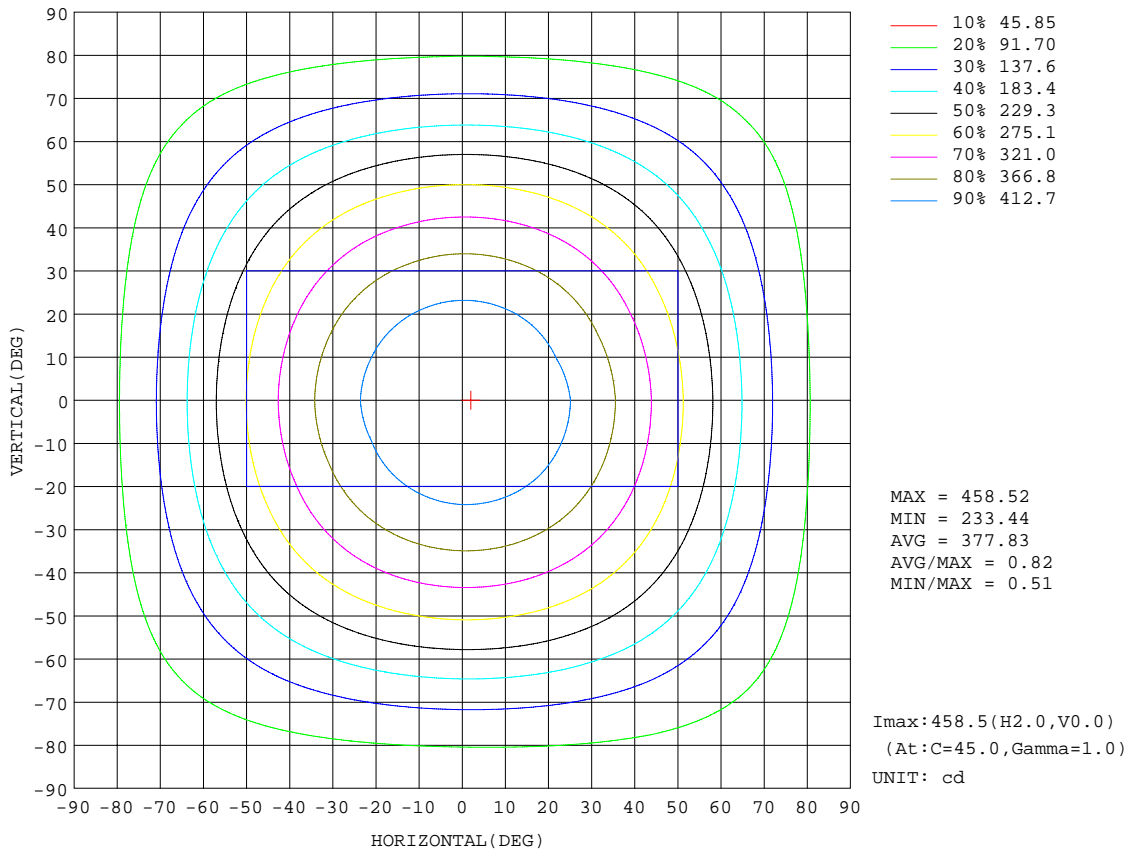
REFLECTANCE										
Ceiling	0.8	0.8	0.8	0.7	0.7	0.7	0.5	0.5	0.5	0
Walls	0.7	0.5	0.3	0.7	0.5	0.3	0.7	0.5	0.3	0
Working plane	0.2	0.2	0.2	0.2	0.2	0.2	0.2	0.2	0.2	0
ROOM INDEX	UTILIZATION FACTORS(PERCENT) $k(RI) \times RCR = 5$									
k = 0.60	53	41	34	52	41	34	50	40	33	27
0.80	62	50	43	61	50	42	59	48	42	34
1.00	71	59	51	69	58	50	66	59	49	41
1.25	77	66	58	76	65	58	72	63	56	48
1.50	82	72	64	80	70	63	76	68	61	52
2.00	89	80	72	87	78	71	82	75	69	59
2.50	94	85	78	91	83	76	86	79	74	63
3.00	97	89	83	94	87	81	89	83	78	67
4.00	101	95	89	98	92	87	92	87	83	71
5.00	104	98	93	101	96	91	95	90	87	74
ROOM INDEX	UF(total)									Direct
According to DIN EN 13032-2 2004			Suspended				SHRNOM = 1.25			

C Range: 0 - 360DEG  
 C Interval: 22.5DEG  
 Test Speed: 10.0deg/s  
 Temperature:24.8DEG  
 Operators:East  
 Test Date:2020-09-09

$\gamma$  Range: 0 - 180DEG  
 $\gamma$  Interval: 1.0DEG  
 Test System:EVERFINE GO-R5000\_V2 SYSTEM V2.0.351  
 Humidity:35%  
 Test Distance:2.492m [K=1.0000]  
 Remarks:

**ISOCANDELA DIAGRAM**

Test:U:120.0V I:0.1648A P:19.39W PF:0.9804 Lamp Flux:1570.78x1 lm		
NAME: ASD-LFMDR-MV-14N21CC-MS-XX	TYPE:N/A	WEIGHT:N/A
SPEC.:	DIM.: N/A	SERIAL No.:N/A
MFR.: ASD Lighting corp	SUR.:N/A	Shielding Angle:N/A



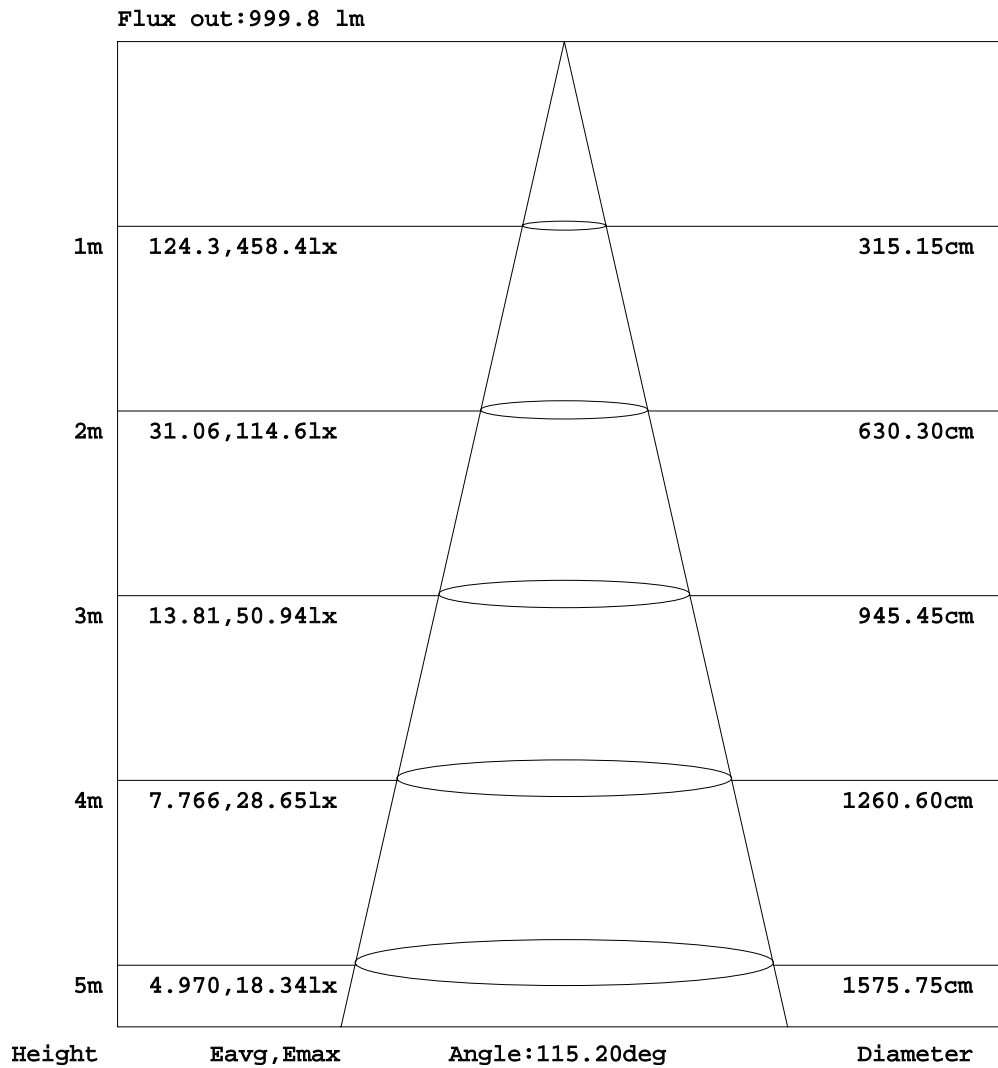
C Range: 0 - 360DEG  
 C Interval: 22.5DEG  
 Test Speed: 10.0deg/s  
 Temperature: 24.8DEG  
 Operators: East  
 Test Date: 2020-09-09

γ Range: 0 - 180DEG  
 γ Interval: 1.0DEG  
 Test System: EVERFINE GO-R5000\_V2 SYSTEM V2.0.351  
 Humidity: 35%  
 Test Distance: 2.492m [K=1.0000]  
 Remarks:



AAI Figure

Test:U:120.0V I:0.1648A P:19.39W PF:0.9804 Lamp Flux:1570.78x1 lm		
NAME: ASD-LFMDR-MV-14N21CC-MS-XX	TYPE:N/A	WEIGHT:N/A
SPEC.:	DIM.: N/A	SERIAL No.:N/A
MFR.: ASD Lighting corp	SUR.:N/A	Shielding Angle:N/A



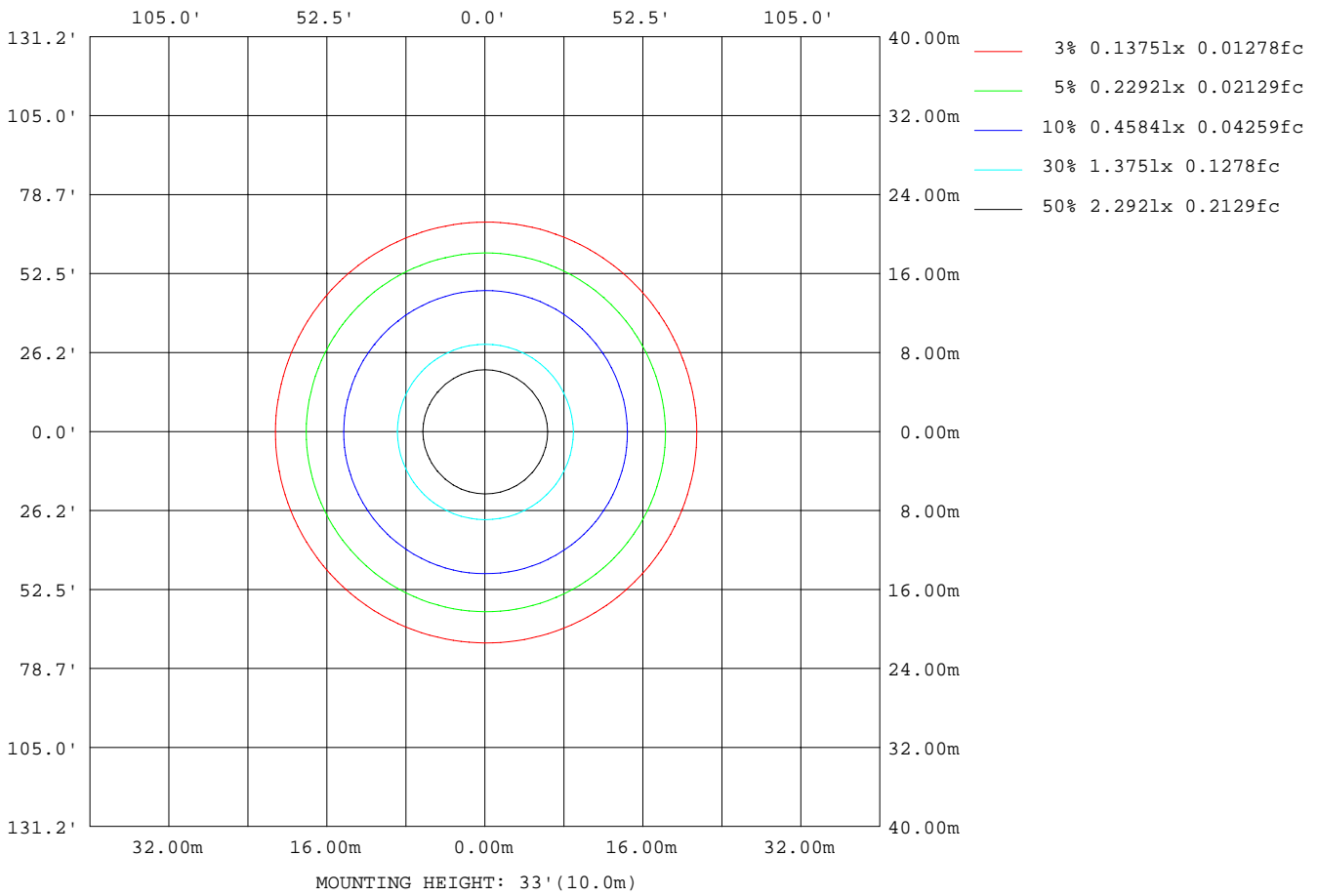
Note:The Curves indicate the illuminated area and the average illumination when the luminaire is at different distance.

C Range: 0 - 360DEG  
 C Interval: 22.5DEG  
 Test Speed: 10.0deg/s  
 Temperature:24.8DEG  
 Operators:East  
 Test Date:2020-09-09

γ Range: 0 - 180DEG  
 γ Interval: 1.0DEG  
 Test System:EVERFINE GO-R5000\_V2 SYSTEM V2.0.351  
 Humidity:35%  
 Test Distance:2.492m [K=1.0000]  
 Remarks:

**ISOLUX DIAGRAM**

Test:U:120.0V I:0.1648A P:19.39W PF:0.9804 Lamp Flux:1570.78x1 lm		
NAME: ASD-LFMDR-MV-14N21CC-MS-XX	TYPE:N/A	WEIGHT:N/A
SPEC.:	DIM.: N/A	SERIAL No.:N/A
MFR.: ASD Lighting corp	SUR.:N/A	Shielding Angle:N/A



C Range: 0 - 360DEG  
 C Interval: 22.5DEG  
 Test Speed: 10.0deg/s  
 Temperature:24.8DEG  
 Operators:East  
 Test Date:2020-09-09

γ Range: 0 - 180DEG  
 γ Interval: 1.0DEG  
 Test System:EVERFINE GO-R5000\_V2 SYSTEM V2.0.351  
 Humidity:35%  
 Test Distance:2.492m [K=1.0000]  
 Remarks:

**LED Avg.L Report**

Test:U:120.0V I:0.1648A P:19.39W PF:0.9804 Lamp Flux:1570.78x1 lm		
NAME: ASD-LFMDR-MV-14N21CC-MS-XX	TYPE:N/A	WEIGHT:N/A
SPEC.:	DIM.: N/A	SERIAL No.:N/A
MFR.: ASD Lighting corp	SUR.:N/A	Shielding Angle:N/A

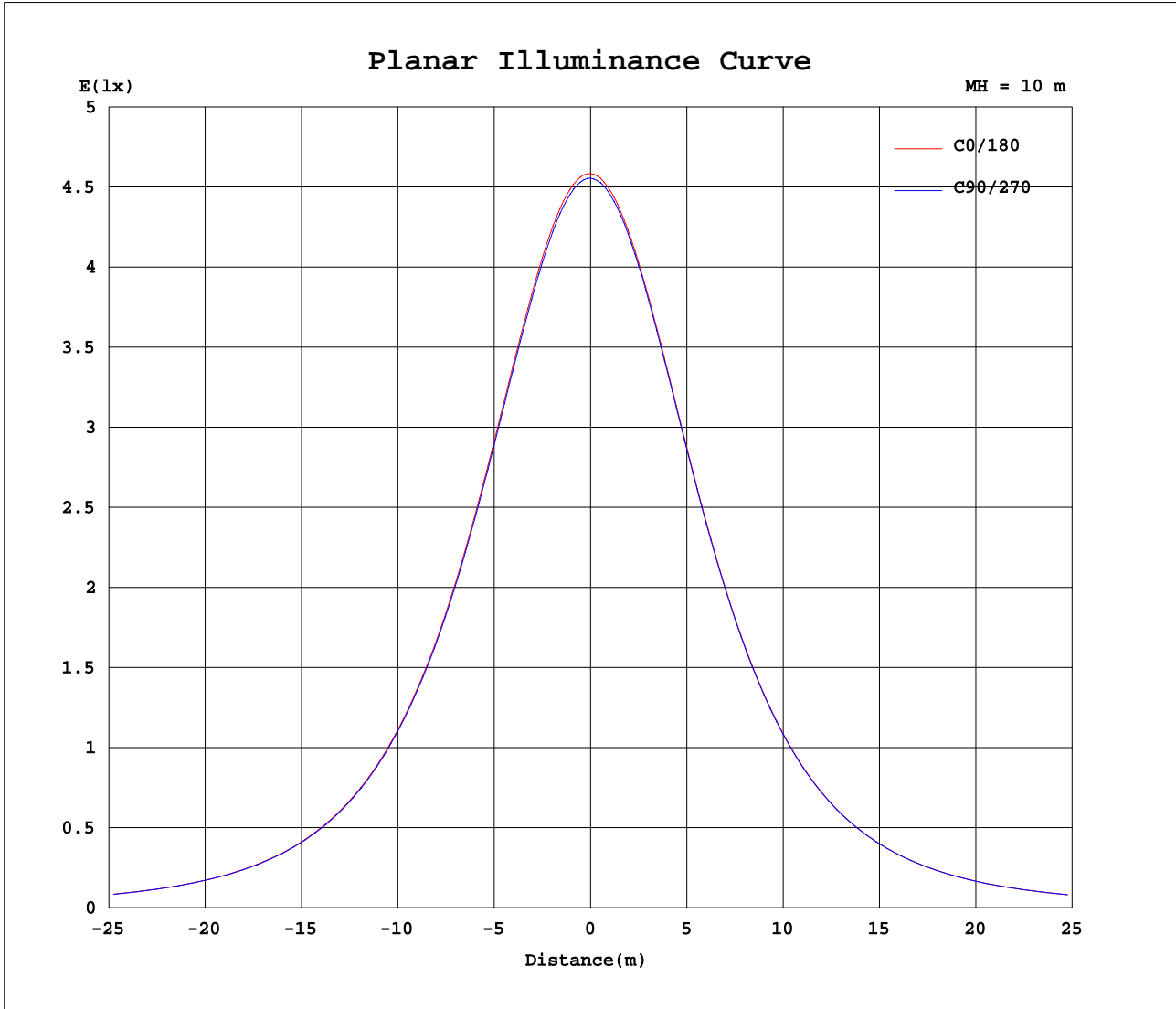
AvgL	cd/m2
L_0~180(65)av	3082
L_0~180(75)av	3285
L_0~180(85)av	5939
L_90~270(65)av	3089
L_90~270(75)av	3309
L_90~270(85)av	6003
L_45(65)av	3088
L_45(75)av	3299
L_45(85)av	5971

Standard: GB/T 29293-2012

C Range: 0 - 360DEG  
 C Interval: 22.5DEG  
 Test Speed: 10.0deg/s  
 Temperature:24.8DEG  
 Operators:East  
 Test Date:2020-09-09

γ Range: 0 - 180DEG  
 γ Interval: 1.0DEG  
 Test System:EVERFINE GO-R5000\_V2 SYSTEM V2.0.351  
 Humidity:35%  
 Test Distance:2.492m [K=1.0000]  
 Remarks:

Planar Illuminance Curve



C Range: 0 - 360DEG  
 C Interval: 22.5DEG  
 Test Speed: 10.0deg/s  
 Temperature: 24.8DEG  
 Operators: East  
 Test Date: 2020-09-09

$\gamma$  Range: 0 - 180DEG  
 $\gamma$  Interval: 1.0DEG  
 Test System: EVERFINE GO-R5000\_V2 SYSTEM V2.0.351  
 Humidity: 35%  
 Test Distance: 2.492m [K=1.0000]  
 Remarks:

LUMINOUS DISTRIBUTION INTENSITY DATA

Test:U:120.0V I:0.1648A P:19.39W PF:0.9804 Lamp Flux:1570.78x1 lm		
NAME: ASD-LFMDR-MV-14N21CC-MS-XX	TYPE:N/A	WEIGHT:N/A
SPEC.:	DIM.: N/A	SERIAL No.:N/A
MFR.: ASD Lighting corp	SUR.:N/A	Shielding Angle:N/A

Table--1

UNIT: cd

C( DEG) γ (DEG)	0	22.5	45	67.5	90	112.5	135	157.5	180	202.5	225	247.5	270	292.5	315	337.5			
0	456	456	456	456	456	456	456	456	456	456	456	456	456	456	456	456			
5	455	455	455	455	454	454	454	454	453	453	454	453	453	454	454	454			
10	449	449	449	449	449	449	448	447	447	446	447	447	447	448	448	449			
15	440	440	441	440	440	439	438	437	437	436	437	437	438	438	438	440			
20	427	428	428	428	427	426	424	424	423	422	422	423	423	425	425	426			
25	411	411	412	411	410	409	408	406	405	405	405	405	406	407	408	410			
30	391	391	392	391	390	389	387	386	385	384	384	385	386	387	388	389			
35	367	368	368	368	367	366	364	363	361	360	360	361	362	363	364	366			
40	341	342	342	342	341	340	338	336	334	334	334	334	335	337	338	340			
45	312	313	314	313	312	311	309	308	306	305	305	305	306	308	309	311			
50	281	283	283	283	281	280	279	277	274	273	273	274	275	277	278	280			
55	249	250	251	250	249	247	246	244	242	241	241	241	243	244	245	247			
60	215	216	217	216	215	214	212	210	208	207	207	208	209	211	212	213			
65	181	183	183	183	181	180	178	176	174	174	174	175	176	177	178	180			
70	149	150	151	150	149	147	146	144	142	142	142	143	144	145	146	147			
75	119	121	121	121	119	118	117	115	113	112	113	114	115	116	116	117			
80	94.2	95.9	96.4	95.5	93.8	92.7	91.6	90.6	88.8	88.2	88.7	89.9	90.6	91.0	91.0	91.8			
85	72.9	74.4	75.0	74.3	73.0	71.7	70.6	69.7	68.5	68.3	68.6	69.4	70.0	70.2	70.1	71.0			
90	54.9	56.3	57.8	56.5	55.1	53.9	53.1	52.3	51.5	51.3	51.5	52.1	52.4	52.5	52.6	53.1			
95	40.3	41.6	42.2	41.7	40.8	39.9	39.4	38.5	38.2	38.2	38.4	38.8	38.8	39.3	38.9	39.3			
100	32.0	32.7	33.1	33.0	32.0	31.6	31.0	30.3	30.3	30.4	30.7	31.1	30.9	31.3	31.2	31.1			
105	30.1	30.8	30.9	30.3	29.3	28.8	28.7	28.5	28.6	28.6	29.1	30.0	30.1	29.9	29.3	29.2			
110	29.7	30.7	30.8	30.0	28.9	28.4	28.4	28.3	28.2	28.0	28.5	29.5	29.8	29.4	28.8	28.8			
115	28.7	29.7	29.9	29.0	28.0	27.4	27.4	27.2	27.1	26.8	27.2	28.0	28.4	28.3	27.7	27.8			
120	26.9	27.8	28.0	27.3	26.4	25.9	25.7	25.4	25.3	25.0	25.2	25.9	26.3	26.3	26.0	26.1			
125	24.6	25.5	25.7	25.0	24.2	23.8	23.7	23.4	23.3	22.9	23.0	23.6	24.0	24.0	23.7	23.8			
130	21.8	22.8	23.1	22.4	21.7	21.3	21.4	21.1	20.9	20.5	20.5	21.0	21.5	21.3	21.0	20.9			
135	18.7	20.2	20.0	19.5	18.8	18.5	18.7	18.5	18.2	17.8	17.7	18.1	18.5	18.2	17.9	17.8			
140	15.5	16.4	17.3	16.2	15.6	15.5	15.8	15.6	15.2	15.8	14.6	14.9	15.2	15.2	14.6	14.4			
145	11.8	12.8	13.1	12.8	12.3	12.4	12.7	13.0	12.1	11.6	11.3	11.7	11.7	11.5	11.3	11.1			
150	8.82	9.37	9.55	9.41	9.17	9.22	9.50	9.38	8.80	8.77	8.28	8.20	8.33	8.19	8.57	8.09			
155	5.87	6.54	6.58	6.69	6.49	6.32	6.57	6.45	5.94	5.69	5.75	5.32	5.58	5.52	5.58	5.62			
160	4.03	4.35	4.43	4.60	4.55	4.20	4.41	4.33	3.77	3.83	3.67	3.49	3.70	3.53	3.89	3.91			
165	2.80	3.12	3.17	3.29	3.22	2.81	2.88	2.64	2.50	2.51	2.45	2.56	2.51	2.39	2.70	2.84			
170	2.11	2.52	2.54	2.53	2.49	1.86	2.35	2.00	1.91	1.92	1.76	2.03	1.75	1.89	2.06	1.83			
175	1.69	1.52	1.58	1.66	1.05	0.94	1.33	1.11	1.12	1.13	1.33	1.04	0.87	0.81	0.89	0.97			
180	0.70	0.71	0.71	0.70	0.68	0.69	0.33	0.54	0.72	0.72	0.72	0.71	0.71	0.70	0.71	0.71			

C Range: 0 - 360DEG  
 C Interval: 22.5DEG  
 Test Speed: 10.0deg/s  
 Temperature:24.8DEG  
 Operators:East  
 Test Date:2020-09-09

γ Range: 0 - 180DEG  
 γ Interval: 1.0DEG  
 Test System:EVERFINE GO-R5000\_V2 SYSTEM V2.0.351  
 Humidity:35%  
 Test Distance:2.492m [K=1.0000]  
 Remarks: