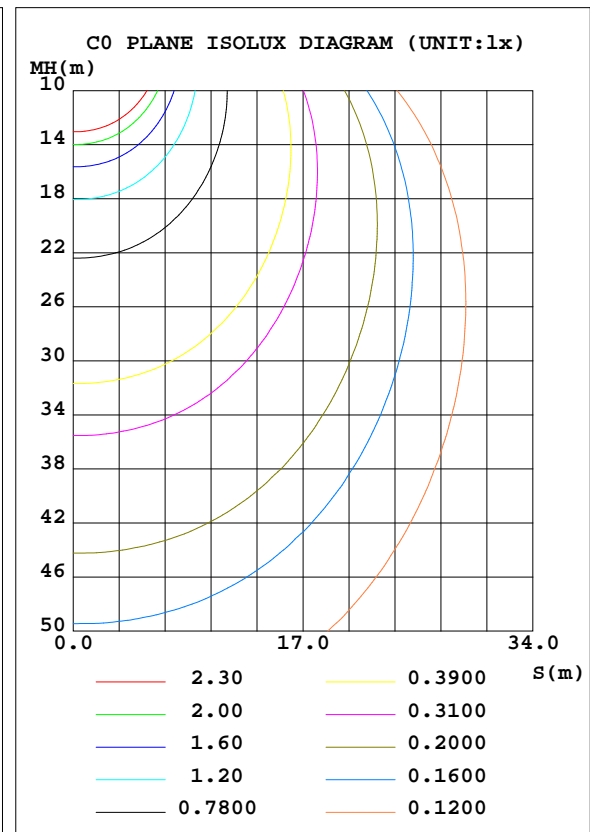
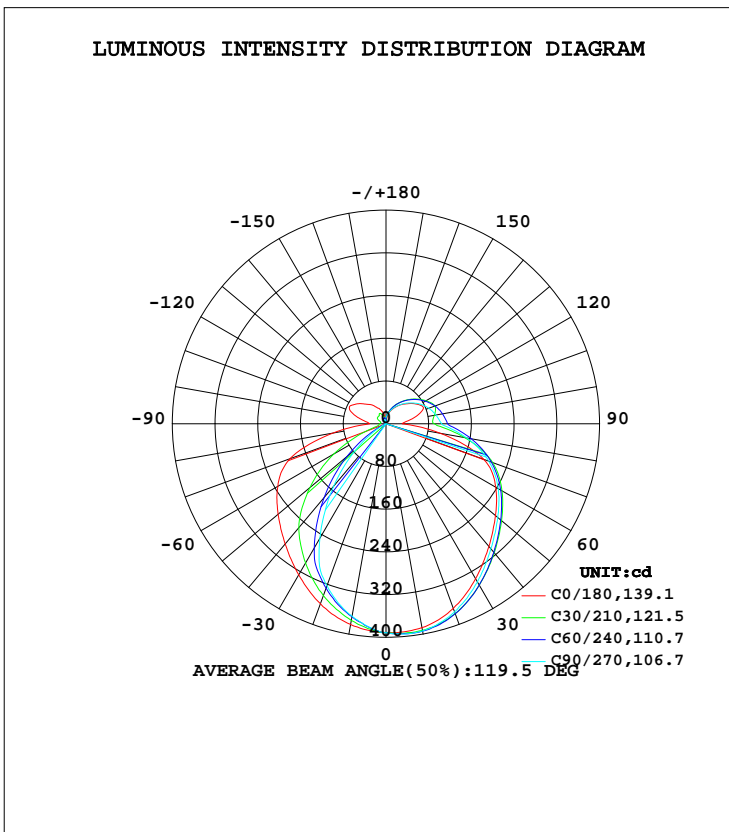


LUMINAIRE PHOTOMETRIC TEST REPORT

Test:U:120.00V I:0.1987A P:22.460W PF:0.9418 Freq:60.00Hz Lamp Flux:1437x1 lm		
NAME: LED Wall Pack	TYPE:LED	WEIGHT:
SPEC.:LVF25M-4D23AC-BK_5000K	DIM.:	SERIAL No.:
MFR.: ASD Lighting Corp	SUR.:	Shielding Angle:

DATA OF LAMP		PHOTOMETRIC DATA Eff: 63.98 lm/W			
MODEL	LVF25M-4D23AC-BK	I <sub>max</sub> (cd)	395.8	S/MH(C0/180)	1.25
NOMINAL POWER(W)	23	LOR(%)	100.0	S/MH(C90/270)	1.02
RATED VOLTAGE(V)	120	TOTAL FLUX(lm)	1437.0	η UP, DN(C0-180)	15.9,52.9
NOMINAL FLUX(lm)	1437	CIE CLASS	SEMI-D.	η UP, DN(C180-360)	3.2,28.0
LAMPS INSIDE	1	η up(%)	19.1	CIBSE SHR NOM	1.25
TEST VOLTAGE(V)	120	η down(%)	80.9	CIBSE SHR MAX	1.35



C Range: 0 - 360DEG  
 C Interval: 15.0DEG  
 Test Speed: HIGH  
 Temperature: 25.0DEG  
 Operators: Alan Wang  
 Test Date: 26 August 2023

γ Range: 0 - 180DEG  
 γ Interval: 1.0DEG  
 Test System: EVERFINE GO-R5000\_V2 SYSTEM V2.00.416  
 Humidity: 42.7%  
 Test Distance: 2.500m [K=1.0391]  
 Remarks:

## ZONAL FLUX DIAGRAM

## ZONAL FLUX DIAGRAM:

$\gamma$	C0	C45	C90	C135	C180	C225	C270	C315	$\gamma$	$\Phi$ zone	$\Phi$ total	%lum, lamp
10	387.6	394.4	394.1	390.0	381.8	369.9	365.9	374.8	0- 10	36.93	36.93	2.57,2.57
20	368.2	380.1	375.1	372.6	358.8	334.7	323.2	343.0	10- 20	104.8	141.7	9.86,9.86
30	335.5	351.1	342.2	343.2	326.8	287.7	247.7	296.7	20- 30	155.8	297.5	20.7,20.7
40	299.9	316.4	305.5	310.1	293.7	213.9	152.7	224.8	30- 40	182.0	479.5	33.4,33.4
50	267.7	282.1	273.3	278.2	263.9	132.6	69.50	141.8	40- 50	185.1	664.7	46.3,46.3
60	237.4	248.6	242.7	245.9	233.9	53.99	12.20	61.28	50- 60	171.1	835.8	58.2,58.2
70	194.7	210.1	204.9	208.1	191.4	4.156	0.2128	5.831	60- 70	145.7	981.5	68.3,68.3
80	103.7	160.8	153.5	159.2	100.7	2.677	0.2500	3.166	70- 80	110.6	1092	76,76
90	30.33	112.1	104.3	111.5	30.61	2.667	0.2874	3.135	80- 90	70.18	1162	80.9,80.9
100	47.39	106.9	95.04	107.2	46.81	2.552	0.3212	3.070	90-100	54.38	1217	84.7,84.7
110	72.21	99.86	85.43	101.2	71.29	2.761	0.3202	3.216	100-110	55.43	1272	88.5,88.5
120	71.65	87.15	73.83	88.49	71.25	4.682	1.075	4.685	110-120	52.38	1324	92.2,92.2
130	59.25	73.16	60.95	74.56	58.73	9.491	2.622	7.952	120-130	42.29	1367	95.1,95.1
140	47.51	58.83	48.65	60.02	47.25	13.74	3.740	12.14	130-140	30.95	1398	97.3,97.3
150	36.63	44.77	37.52	45.72	35.99	15.39	5.532	15.53	140-150	20.92	1419	98.7,98.7
160	26.36	31.42	27.47	31.99	26.92	15.58	7.191	12.69	150-160	12.09	1431	99.6,99.6
170	13.23	19.30	18.38	19.60	12.72	8.659	7.644	9.087	160-170	5.323	1436	99.9,99.9
180	8.300	6.702	11.19	6.512	6.995	7.318	4.017	5.001	170-180	0.9819	1437	100,100
DEG	LUMINOUS INTENSITY:cd									UNIT:lm		

Conical surface Flux(90deg): 572.95 lm

%lum = 39.9%

%lamp = 39.9%

Conical surface Flux(120deg): 835.78 lm

%lum = 58.2%

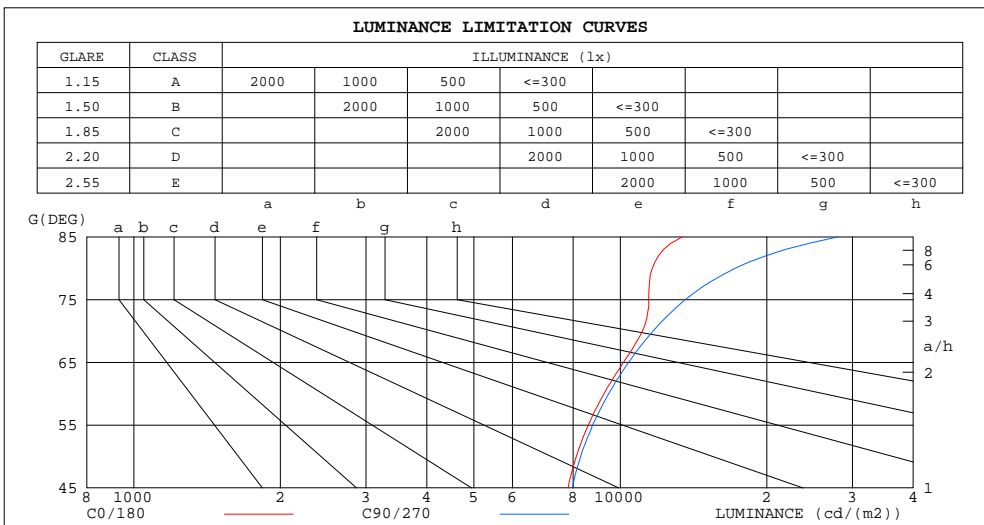
%lamp = 58.2%

C Range: 0 - 360DEG  
 C Interval: 15.0DEG  
 Test Speed: HIGH  
 Temperature: 25.0DEG  
 Operators: Alan Wang  
 Test Date: 26 August 2023

$\gamma$  Range: 0 - 180DEG  
 $\gamma$  Interval: 1.0DEG  
 Test System: EVERFINE GO-R5000\_V2 SYSTEM V2.00.416  
 Humidity: 42.7%  
 Test Distance: 2.500m [K=1.0391]  
 Remarks:

LUMINANCE LIMITATION CURVES

Test:U:120.00V I:0.1987A P:22.460W PF:0.9418 Freq:60.00Hz Lamp Flux:1437x1 lm		
NAME: LED Wall Pack	TYPE:LED	WEIGHT:
SPEC.:LVF25M-4D23AC-BK_5000K	DIM.:	SERIAL No.:
MFR.: ASD Lighting Corp	SUR.:	Shielding Angle:



LUMINANCE cd/(m2)		
G(DEG)	C0/180	C90/270
85	13418	28048
80	11637	17230
75	11436	13600
70	11099	11680
65	10148	10399
60	9254	9462
55	8595	8767
50	8118	8289
45	7811	7969

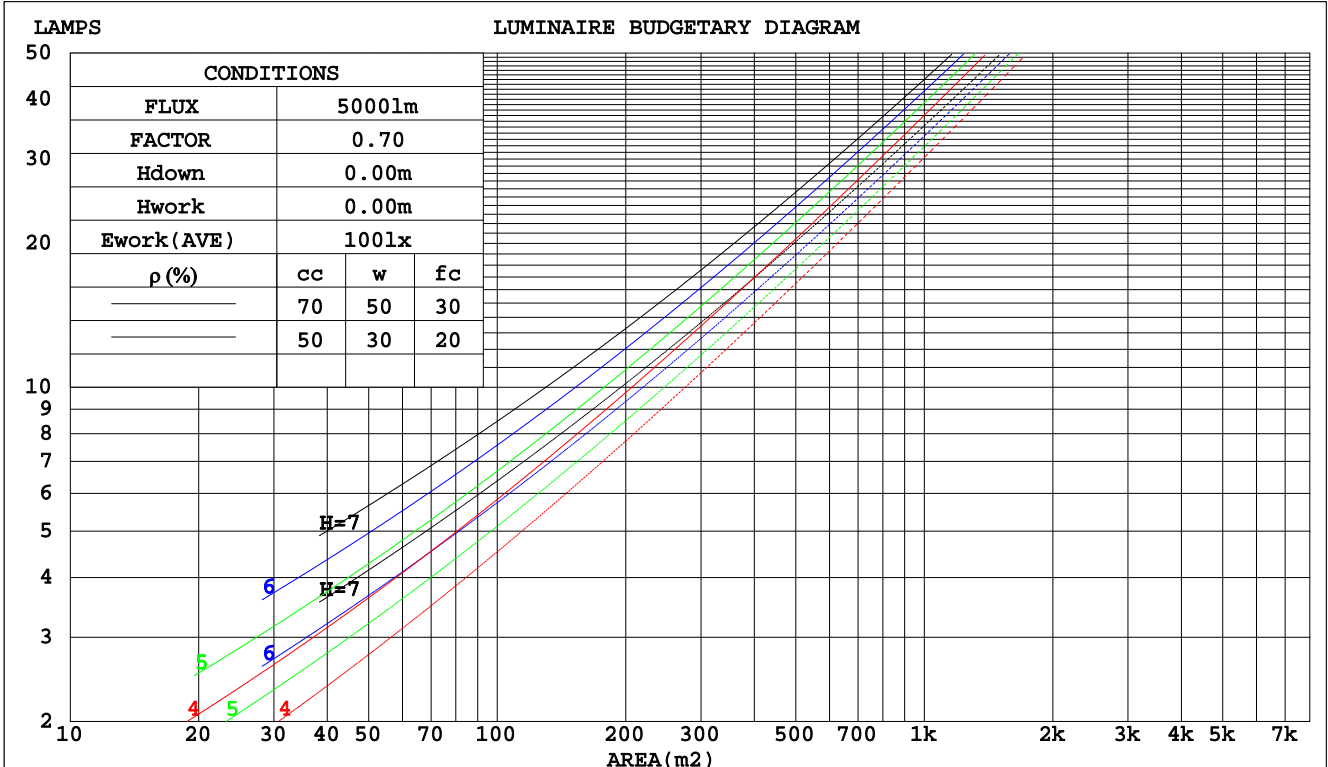
C Range: 0 - 360DEG  
 C Interval: 15.0DEG  
 Test Speed: HIGH  
 Temperature: 25.0DEG  
 Operators: Alan Wang  
 Test Date: 26 August 2023

$\gamma$  Range: 0 - 180DEG  
 $\gamma$  Interval: 1.0DEG  
 Test System: EVERFINE GO-R5000\_V2 SYSTEM V2.00.416  
 Humidity: 42.7%  
 Test Distance: 2.500m [K=1.0391]  
 Remarks:

CU AND LUMINAIRE BUDGETARY ESTIMATE DIAGRAM

Test:U:120.00V I:0.1987A P:22.460W PF:0.9418 Freq:60.00Hz Lamp Flux:1437x1 lm		
NAME: LED Wall Pack	TYPE:LED	WEIGHT:
SPEC.:LVF25M-4D23AC-BK_5000K	DIM.:	SERIAL No.:
MFR.: ASD Lighting Corp	SUR.:	Shielding Angle:

pcc	80%			70%			50%			30%			10%			0
	50%	30%	10%	50%	30%	10%	50%	30%	10%	50%	30%	10%	50%	30%	10%	0
pw																
pfc																
RCR	RCR:Room Cavity Ratio			Coefficients of Utilization(CU)												
0.0	1.14	1.14	1.14	1.10	1.10	1.10	1.00	1.00	1.00	.92	.92	.92	.84	.84	.84	.81
1.0	.97	.93	.88	.93	.89	.85	.86	.82	.79	.78	.76	.73	.72	.70	.68	.64
2.0	.84	.77	.71	.81	.74	.69	.74	.69	.64	.68	.64	.60	.62	.59	.56	.53
3.0	.74	.65	.59	.71	.63	.57	.65	.59	.53	.60	.54	.50	.55	.50	.47	.44
4.0	.65	.56	.49	.62	.54	.48	.58	.51	.45	.53	.47	.43	.49	.44	.40	.37
5.0	.58	.49	.42	.56	.47	.41	.51	.44	.39	.48	.42	.37	.44	.39	.35	.32
6.0	.52	.43	.37	.50	.42	.36	.46	.39	.34	.43	.37	.32	.40	.35	.31	.28
7.0	.47	.38	.32	.45	.37	.32	.42	.35	.30	.39	.33	.29	.36	.31	.27	.25
8.0	.43	.35	.29	.41	.34	.28	.39	.32	.27	.36	.30	.26	.33	.28	.24	.22
9.0	.39	.31	.26	.38	.30	.25	.36	.29	.24	.33	.27	.23	.31	.26	.22	.20
10.0	.36	.29	.23	.35	.28	.23	.33	.26	.22	.31	.25	.21	.29	.24	.20	.18



C Range: 0 - 360DEG  
 C Interval: 15.0DEG  
 Test Speed: HIGH  
 Temperature: 25.0DEG  
 Operators: Alan Wang  
 Test Date: 26 August 2023

γ Range: 0 - 180DEG  
 γ Interval: 1.0DEG  
 Test System: EVERFINE GO-R5000\_V2 SYSTEM V2.00.416  
 Humidity: 42.7%  
 Test Distance: 2.500m [K=1.0391]  
 Remarks:

WEC AND CCEC

Test:U:120.00V I:0.1987A P:22.460W PF:0.9418 Freq:60.00Hz Lamp Flux:1437x1 lm		
NAME: LED Wall Pack	TYPE:LED	WEIGHT:
SPEC.:LVF25M-4D23AC-BK_5000K	DIM.:	SERIAL No.:
MFR.: ASD Lighting Corp	SUR.:	Shielding Angle:

ρcc	80%			70%			50%			30%			10%			0
ρw	50%	30%	10%	50%	30%	10%	50%	30%	10%	50%	30%	10%	50%	30%	10%	0
ρfc	20%			20%			20%			20%			20%			0
RCR	RCR:Room Cavity Ratio						Wall Exitance Coefficients(WEC)									
0.0																
1.0	.344	.196	.062	.331	.189	.060	.307	.176	.056	.285	.164	.053	.264	.153	.049	
2.0	.307	.168	.052	.295	.162	.050	.273	.152	.047	.253	.142	.044	.234	.132	.042	
3.0	.277	.147	.044	.266	.143	.043	.246	.133	.041	.228	.125	.038	.211	.117	.036	
4.0	.252	.131	.038	.242	.127	.037	.224	.119	.036	.208	.111	.034	.192	.104	.032	
5.0	.230	.117	.034	.222	.114	.033	.206	.107	.032	.190	.100	.030	.176	.094	.028	
6.0	.212	.106	.030	.205	.103	.030	.190	.097	.028	.176	.091	.027	.163	.086	.025	
7.0	.197	.097	.028	.190	.094	.027	.176	.089	.026	.163	.084	.024	.151	.079	.023	
8.0	.183	.090	.025	.177	.087	.025	.164	.082	.023	.152	.077	.022	.141	.072	.021	
9.0	.171	.083	.023	.165	.081	.023	.154	.076	.022	.143	.072	.020	.132	.067	.019	
10.0	.161	.077	.021	.155	.075	.021	.144	.071	.020	.134	.067	.019	.125	.063	.018	

ρcc	80%			70%			50%			30%			10%			0
ρw	50%	30%	10%	50%	30%	10%	50%	30%	10%	50%	30%	10%	50%	30%	10%	0
ρfc	20%			20%			20%			20%			20%			0
RCR	RCR:Room Cavity Ratio						Ceiling Cavity Exitance Coefficients(CCEC)									
0.0	.336	.336	.336	.287	.287	.287	.196	.196	.196	.113	.113	.113	.036	.036	.036	
1.0	.330	.303	.279	.282	.260	.240	.193	.179	.166	.111	.103	.096	.036	.033	.031	
2.0	.322	.280	.244	.276	.241	.211	.189	.167	.147	.109	.097	.086	.035	.031	.028	
3.0	.314	.263	.222	.270	.227	.192	.185	.158	.135	.107	.092	.080	.034	.030	.026	
4.0	.307	.250	.207	.263	.216	.180	.181	.151	.127	.105	.088	.075	.034	.029	.025	
5.0	.299	.240	.197	.257	.208	.171	.177	.145	.121	.103	.085	.072	.033	.028	.024	
6.0	.292	.232	.190	.251	.201	.165	.173	.141	.117	.100	.083	.069	.032	.027	.023	
7.0	.285	.226	.184	.245	.196	.160	.170	.137	.114	.099	.081	.068	.032	.026	.022	
8.0	.279	.220	.180	.240	.191	.157	.166	.134	.111	.097	.079	.066	.031	.026	.022	
9.0	.273	.215	.177	.235	.187	.154	.163	.131	.109	.095	.078	.065	.031	.025	.022	
10.0	.267	.211	.174	.230	.184	.152	.160	.129	.108	.093	.076	.064	.030	.025	.021	

C Range: 0 - 360DEG  
 C Interval: 15.0DEG  
 Test Speed: HIGH  
 Temperature: 25.0DEG  
 Operators: Alan Wang  
 Test Date: 26 August 2023

γ Range: 0 - 180DEG  
 γ Interval: 1.0DEG  
 Test System: EVERFINE GO-R5000\_V2 SYSTEM V2.00.416  
 Humidity: 42.7%  
 Test Distance: 2.500m [K=1.0391]  
 Remarks:

## UGR(Unified Glare Rating) Table

Test:U:120.00V I:0.1987A P:22.460W PF:0.9418 Freq:60.00Hz Lamp Flux:1437x1 lm										
NAME: LED Wall Pack					TYPE:LED			WEIGHT:		
SPEC.:LVF25M-4D23AC-BK_5000K					DIM.:			SERIAL No.:		
MFR.: ASD Lighting Corp					SUR.:			Shielding Angle:		
ceiling/cavity	0.7	0.7	0.5	0.5	0.3	0.7	0.7	0.5	0.5	0.3
walls	0.5	0.3	0.5	0.3	0.3	0.5	0.3	0.5	0.3	0.3
working plane	0.2	0.2	0.2	0.2	0.2	0.2	0.2	0.2	0.2	0.2
Room dimensions	Viewed crosswise					Viewed endwise				
x = 2H y = 2H	20.4	21.7	21.0	22.2	22.8	20.4	21.7	20.9	22.2	22.8
3H	22.9	24.1	23.4	24.6	25.2	22.9	24.1	23.4	24.6	25.2
4H	24.0	25.1	24.5	25.7	26.3	24.2	25.3	24.7	25.9	26.5
6H	24.8	25.9	25.4	26.5	27.1	25.5	26.6	26.1	27.1	27.8
8H	25.1	26.2	25.7	26.8	27.4	26.2	27.2	26.8	27.8	28.5
12H	25.4	26.4	26.0	27.0	27.7	26.9	27.9	27.5	28.5	29.2
4H 2H	21.3	22.4	21.9	23.0	23.6	21.3	22.4	21.8	22.9	23.6
3H	23.9	24.9	24.6	25.5	26.2	23.9	24.9	24.5	25.5	26.2
4H	25.2	26.1	25.8	26.7	27.4	25.4	26.3	26.0	26.9	27.6
6H	26.2	27.0	26.9	27.7	28.5	26.9	27.7	27.5	28.3	29.1
8H	26.7	27.4	27.3	28.1	28.9	27.7	28.4	28.3	29.1	29.9
12H	27.0	27.7	27.7	28.4	29.2	28.5	29.2	29.2	29.9	30.7
8H 4H	25.8	26.5	26.5	27.2	28.0	25.9	26.7	26.6	27.4	28.1
6H	27.2	27.8	27.9	28.5	29.3	27.7	28.3	28.4	29.0	29.9
8H	27.8	28.3	28.5	29.1	29.9	28.7	29.3	29.4	30.0	30.8
12H	28.3	28.8	29.1	29.6	30.4	29.8	30.3	30.5	31.0	31.8
12H 4H	25.9	26.6	26.6	27.3	28.1	26.0	26.7	26.7	27.4	28.2
6H	27.4	28.0	28.2	28.7	29.5	27.9	28.5	28.7	29.2	30.0
8H	28.2	28.7	28.9	29.4	30.3	29.0	29.5	29.8	30.2	31.1
Variations with the observer position at spacings:										
S = 1.0H	+ 0.1 / - 0.1					+ 0.1 / - 0.1				
1.5H	+ 0.2 / - 0.3					+ 0.2 / - 0.3				
2.0H	+ 0.2 / - 0.4					+ 0.2 / - 0.4				

CIE Pub.117, 1437 lm Total Lamp Luminous Flux Corrected ( $8\log(F/F_0) = 1.3$ )  
Area: 0.0513 m<sup>2</sup>

C Range: 0 - 360DEG  
C Interval: 15.0DEG  
Test Speed: HIGH  
Temperature: 25.0DEG  
Operators: Alan Wang  
Test Date: 26 August 2023

$\gamma$  Range: 0 - 180DEG  
 $\gamma$  Interval: 1.0DEG  
Test System: EVERFINE GO-R5000\_V2 SYSTEM V2.00.416  
Humidity: 42.7%  
Test Distance: 2.500m [K=1.0391]  
Remarks:

## UTILIZATION FACTORS TABLE

Test:U:120.00V I:0.1987A P:22.460W PF:0.9418 Freq:60.00Hz Lamp Flux:1437x1 lm		
NAME: LED Wall Pack	TYPE:LED	WEIGHT:
SPEC.:LVF25M-4D23AC-BK_5000K	DIM.:	SERIAL No.:
MFR.: ASD Lighting Corp	SUR.:	Shielding Angle:

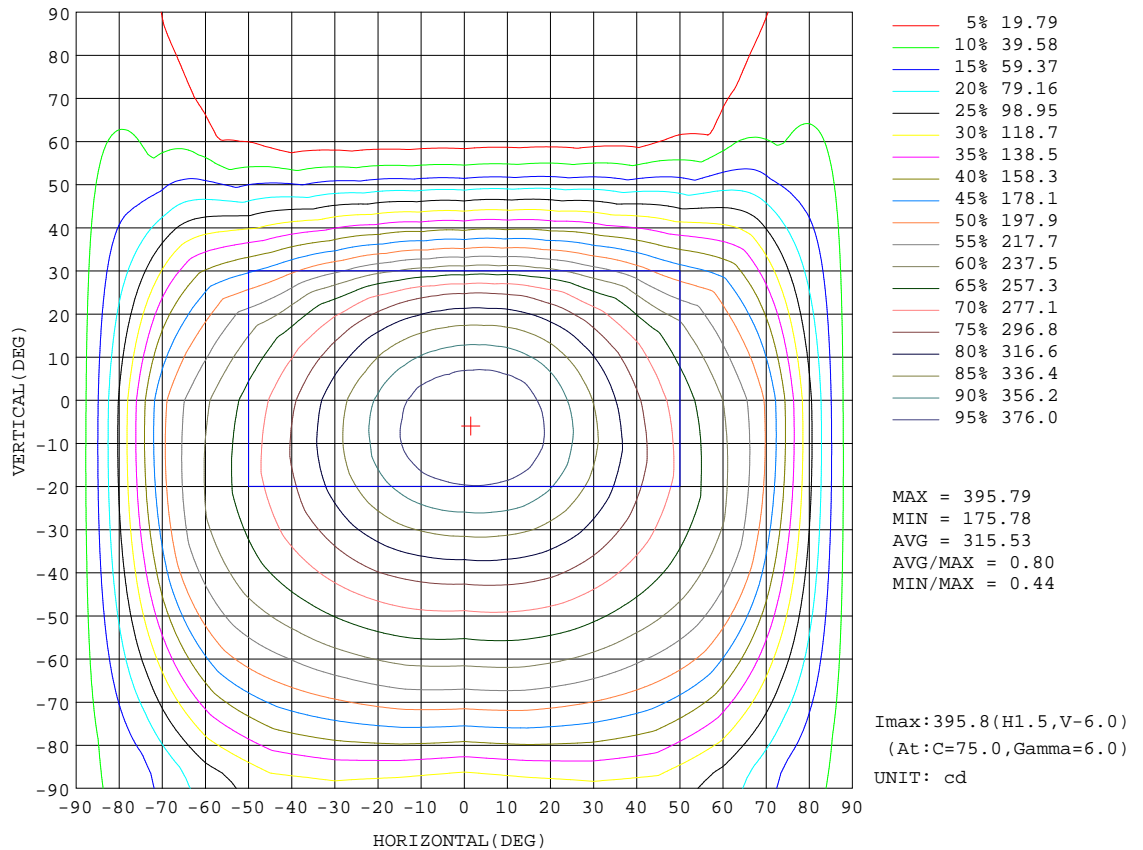
REFLECTANCE										
Ceiling	0.8	0.8	0.8	0.7	0.7	0.7	0.5	0.5	0.5	0
Walls	0.7	0.5	0.3	0.7	0.5	0.3	0.7	0.5	0.3	0
Working plane	0.2	0.2	0.2	0.2	0.2	0.2	0.2	0.2	0.2	0
ROOM INDEX	UTILIZATION FACTORS(PERCENT) $k(RI) \times RCR = 5$									
k = 0.60	50	39	32	49	38	31	47	37	31	24
0.80	60	48	40	58	47	40	55	45	39	31
1.00	68	55	48	66	54	47	62	54	46	37
1.25	74	63	55	72	61	54	68	58	52	42
1.50	79	68	60	77	66	59	72	63	57	46
2.00	86	76	69	83	74	67	77	70	64	52
2.50	91	81	74	87	79	72	81	74	69	56
3.00	94	86	79	91	83	77	84	78	73	59
4.00	99	92	86	95	88	83	87	82	78	63
5.00	101	95	90	97	92	87	89	85	81	66
ROOM INDEX	UF(total)									Direct
According to DIN EN 13032-2 2004			Suspended				SHRNOM = 1.25			

C Range: 0 - 360DEG  
 C Interval: 15.0DEG  
 Test Speed: HIGH  
 Temperature: 25.0DEG  
 Operators: Alan Wang  
 Test Date: 26 August 2023

$\gamma$  Range: 0 - 180DEG  
 $\gamma$  Interval: 1.0DEG  
 Test System: EVERFINE GO-R5000\_V2 SYSTEM V2.00.416  
 Humidity: 42.7%  
 Test Distance: 2.500m [K=1.0391]  
 Remarks:

ISOCANDELA DIAGRAM

Test:U:120.00V I:0.1987A P:22.460W PF:0.9418 Freq:60.00Hz Lamp Flux:1437x1 lm		
NAME: LED Wall Pack	TYPE:LED	WEIGHT:
SPEC.:LVF25M-4D23AC-BK_5000K	DIM.:	SERIAL No.:
MFR.: ASD Lighting Corp	SUR.:	Shielding Angle:

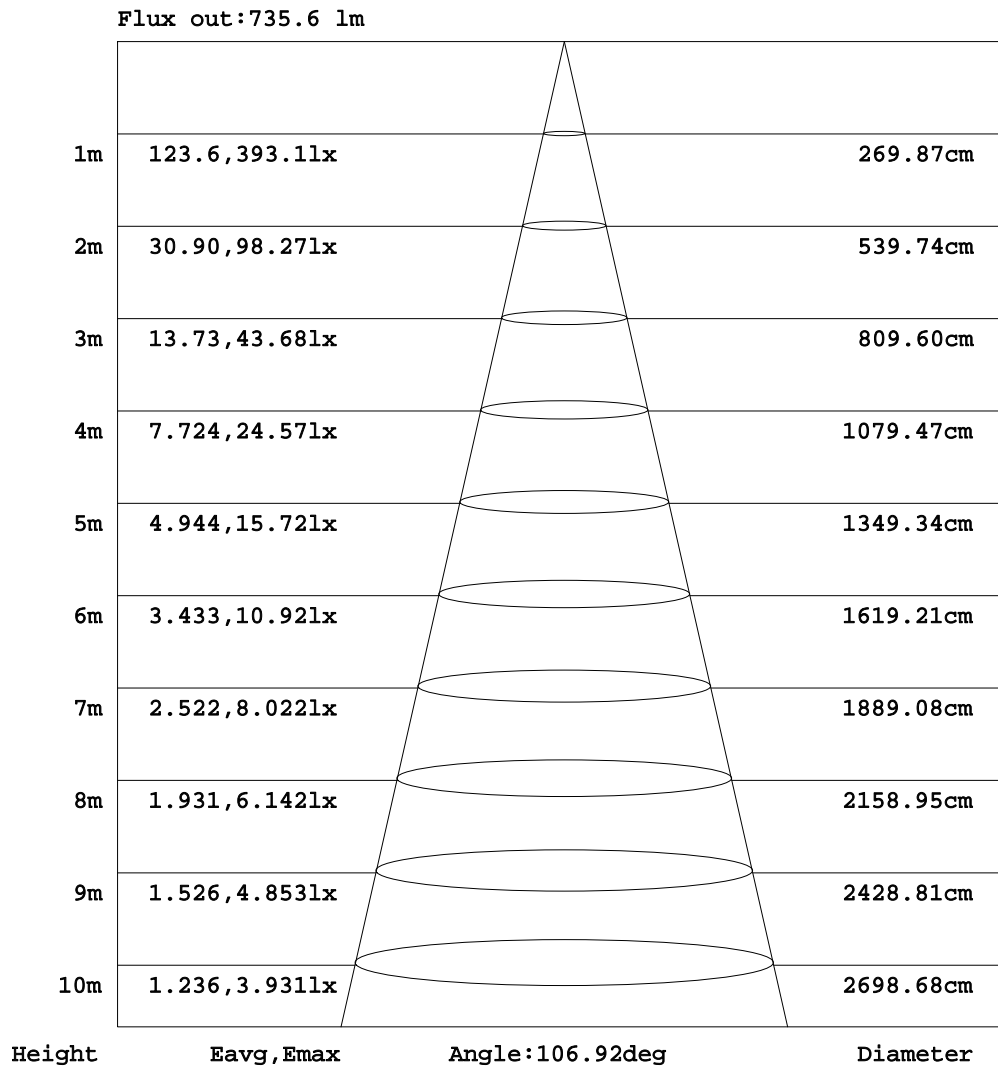


C Range: 0 - 360DEG  
 C Interval: 15.0DEG  
 Test Speed: HIGH  
 Temperature: 25.0DEG  
 Operators: Alan Wang  
 Test Date: 26 August 2023

γ Range: 0 - 180DEG  
 γ Interval: 1.0DEG  
 Test System: EVERFINE GO-R5000\_V2 SYSTEM V2.00.416  
 Humidity: 42.7%  
 Test Distance: 2.500m [K=1.0391]  
 Remarks:

AAI Figure

Test:U:120.00V I:0.1987A P:22.460W PF:0.9418 Freq:60.00Hz Lamp Flux:1437x1 lm		
NAME: LED Wall Pack	TYPE:LED	WEIGHT:
SPEC.:LVF25M-4D23AC-BK_5000K	DIM.:	SERIAL No.:
MFR.: ASD Lighting Corp	SUR.:	Shielding Angle:



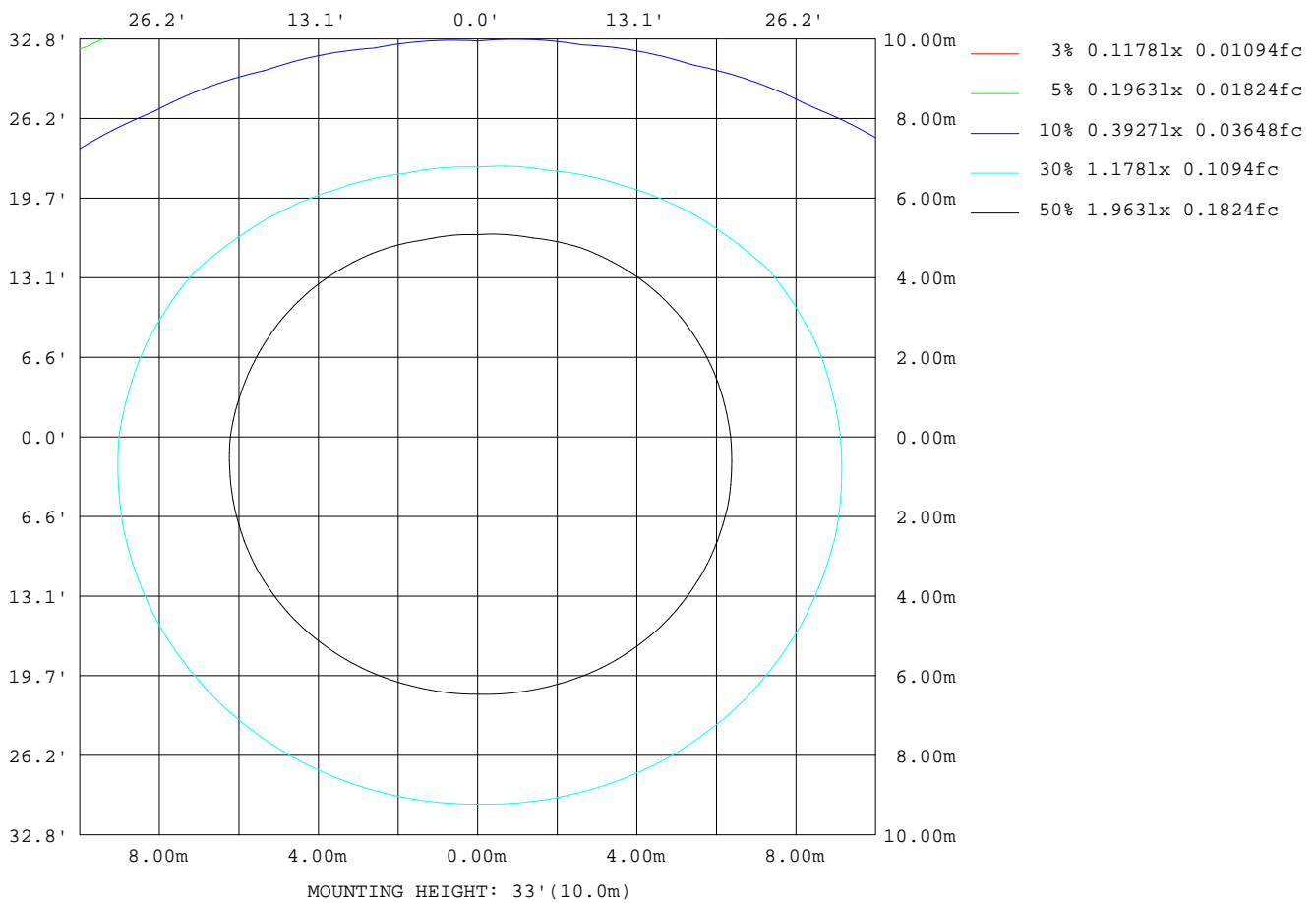
Note:The Curves indicate the illuminated area and the average illumination when the luminaire is at different distance.

C Range: 0 - 360DEG  
 C Interval: 15.0DEG  
 Test Speed: HIGH  
 Temperature: 25.0DEG  
 Operators:Alan Wang  
 Test Date:26 August 2023

γ Range: 0 - 180DEG  
 γ Interval: 1.0DEG  
 Test System:EVERFINE GO-R5000\_V2 SYSTEM V2.00.416  
 Humidity: 42.7%  
 Test Distance:2.500m [K=1.0391]  
 Remarks:

ISOLUX DIAGRAM

Test:U:120.00V I:0.1987A P:22.460W PF:0.9418 Freq:60.00Hz Lamp Flux:1437x1 lm		
NAME: LED Wall Pack	TYPE:LED	WEIGHT:
SPEC.:LVF25M-4D23AC-BK_5000K	DIM.:	SERIAL No.:
MFR.: ASD Lighting Corp	SUR.:	Shielding Angle:



C Range: 0 - 360DEG  
 C Interval: 15.0DEG  
 Test Speed: HIGH  
 Temperature: 25.0DEG  
 Operators: Alan Wang  
 Test Date: 26 August 2023

γ Range: 0 - 180DEG  
 γ Interval: 1.0DEG  
 Test System: EVERFINE GO-R5000\_V2 SYSTEM V2.00.416  
 Humidity: 42.7%  
 Test Distance: 2.500m [K=1.0391]  
 Remarks:

## LED Avg.L Report

Test:U:120.00V I:0.1987A P:22.460W PF:0.9418 Freq:60.00Hz Lamp Flux:1437x1 lm		
NAME: LED Wall Pack	TYPE:LED	WEIGHT:
SPEC.:LVF25M-4D23AC-BK_5000K	DIM.:	SERIAL No.:
MFR.: ASD Lighting Corp	SUR.:	Shielding Angle:

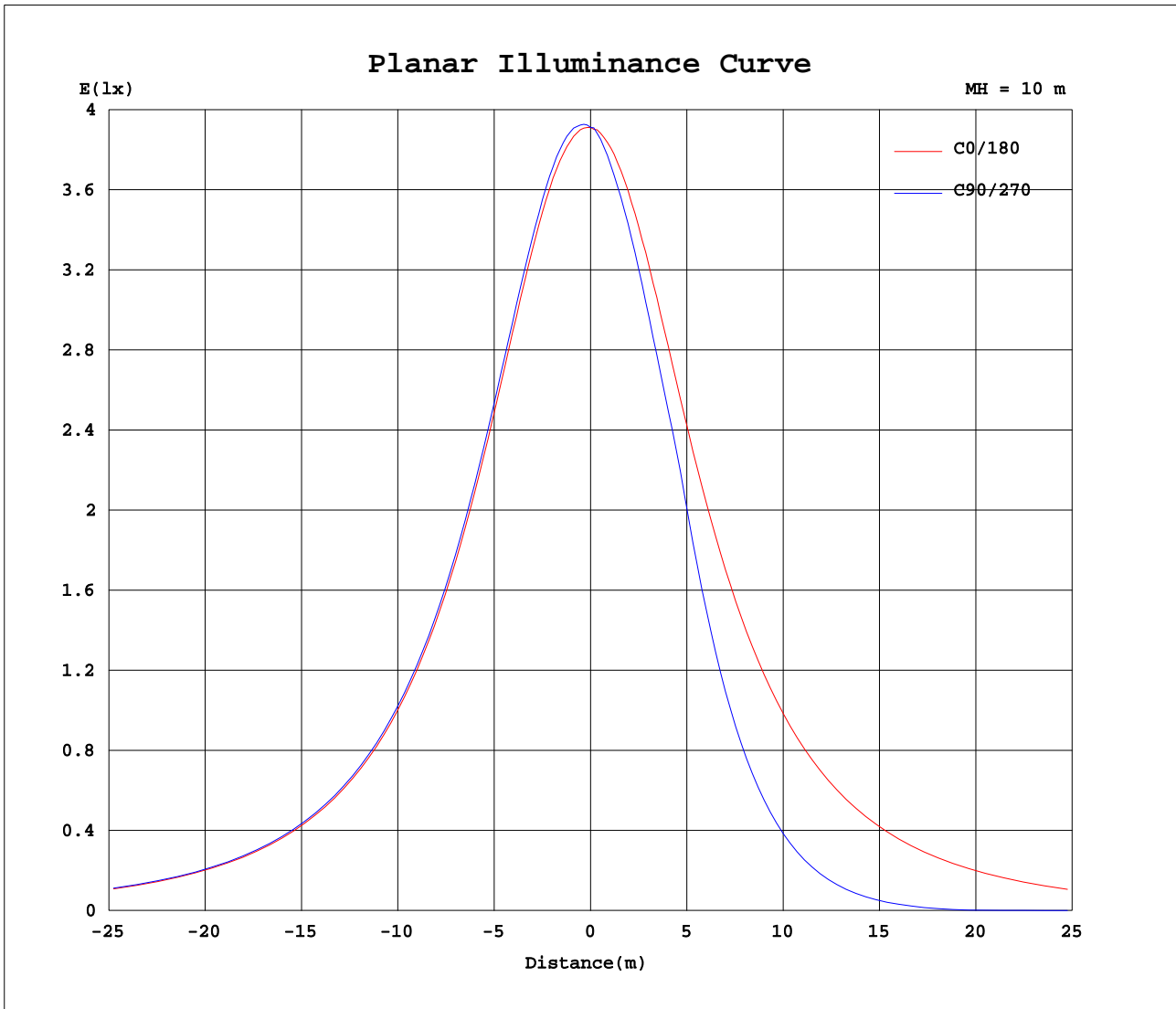
AvgL	cd/m2
L_0~180(65)av	10083
L_0~180(75)av	11316
L_0~180(85)av	13227
L_90~270(65)av	5241
L_90~270(75)av	6809
L_90~270(85)av	14053
L_45(65)av	5874
L_45(75)av	7112
L_45(85)av	15187

Standard: GB/T 29293-2012

C Range: 0 - 360DEG  
 C Interval: 15.0DEG  
 Test Speed: HIGH  
 Temperature: 25.0DEG  
 Operators: Alan Wang  
 Test Date: 26 August 2023

$\gamma$  Range: 0 - 180DEG  
 $\gamma$  Interval: 1.0DEG  
 Test System: EVERFINE GO-R5000\_V2 SYSTEM V2.00.416  
 Humidity: 42.7%  
 Test Distance: 2.500m [K=1.0391]  
 Remarks:

Planar Illuminance Curve



C Range: 0 - 360DEG  
 C Interval: 15.0DEG  
 Test Speed: HIGH  
 Temperature: 25.0DEG  
 Operators: Alan Wang  
 Test Date: 26 August 2023

$\gamma$  Range: 0 - 180DEG  
 $\gamma$  Interval: 1.0DEG  
 Test System: EVERFINE GO-R5000\_V2 SYSTEM V2.00.416  
 Humidity: 42.7%  
 Test Distance: 2.500m [K=1.0391]  
 Remarks:

LUMINOUS DISTRIBUTION INTENSITY DATA

Test:U:120.00V I:0.1987A P:22.460W PF:0.9418 Freq:60.00Hz Lamp Flux:1437x1 lm		
NAME: LED Wall Pack	TYPE:LED	WEIGHT:
SPEC.:LVF25M-4D23AC-BK_5000K	DIM.:	SERIAL No.:
MFR.: ASD Lighting Corp	SUR.:	Shielding Angle:

Table--1

UNIT: cd

C(DEG) γ (DEG)	0	15	30	45	60	75	90	105	120	135	150	165	180	195	210	225	240	255	270
0	391	391	391	392	391	392	391	391	392	392	392	391	391	391	391	392	391	392	391
5	391	392	394	395	395	395	395	394	394	392	391	390	388	387	385	383	382	382	382
10	388	391	393	394	394	394	394	392	392	390	388	385	382	378	374	370	367	366	366
15	380	385	388	390	389	388	387	386	385	383	381	376	372	366	360	354	350	347	347
20	368	374	379	380	379	377	375	374	374	373	370	364	359	350	343	335	328	324	323
25	353	360	365	367	365	362	360	359	360	359	356	350	343	333	323	312	303	297	295
30	335	344	349	351	349	345	342	342	344	343	341	334	327	314	301	288	269	253	248
35	317	327	333	334	332	327	324	325	327	327	325	318	310	295	278	254	225	204	199
40	300	311	315	316	314	310	305	307	309	310	309	303	294	277	254	214	180	159	153
45	283	295	299	299	297	293	289	291	293	294	294	289	278	258	222	173	137	115	109
50	268	280	283	282	280	277	273	275	277	278	279	275	264	239	186	133	95.6	75.4	69.5
55	253	265	267	265	264	262	258	260	261	262	264	262	249	219	150	91.9	57.8	41.1	36.6
60	237	251	251	249	248	247	243	245	245	246	249	248	234	193	112	54.0	26.4	14.9	12.2
65	220	234	233	230	230	229	225	228	227	228	232	232	217	161	72.4	23.0	4.54	1.94	1.81
70	195	211	212	210	210	209	205	208	208	208	211	209	191	122	37.3	4.16	0.23	0.22	0.21
75	152	171	184	187	187	186	181	185	185	185	183	169	149	76.8	16.7	2.64	0.24	0.24	0.23
80	104	126	149	161	162	159	153	159	160	159	148	123	101	40.0	14.2	2.68	0.25	0.26	0.25
85	60.0	83.2	115	134	136	132	125	132	135	132	113	80.5	58.3	29.6	12.7	2.68	0.27	0.27	0.27
90	30.3	53.0	90.6	112	116	111	104	112	116	111	87.5	52.1	30.6	23.6	11.4	2.67	0.28	0.29	0.29
95	35.2	56.7	88.3	109	112	106	99.3	107	112	109	87.7	56.5	35.2	22.6	10.9	2.63	0.29	0.30	0.31
100	47.4	67.5	92.1	107	108	102	95.0	103	108	107	92.1	67.5	46.8	22.6	10.4	2.55	0.31	0.31	0.32
105	61.0	78.9	95.9	104	103	97.5	90.4	98.4	104	105	96.7	79.1	59.8	28.1	10.2	2.45	0.32	0.32	0.33
110	72.2	87.5	97.6	99.9	97.8	91.8	85.4	93.0	98.7	101	98.4	88.0	71.3	37.1	11.1	2.76	0.32	0.32	0.32
115	76.3	88.0	93.2	93.7	91.5	86.0	79.9	86.9	92.7	95.3	94.6	89.4	75.7	43.2	14.5	3.25	1.03	0.61	0.36
120	71.6	81.8	86.6	87.1	85.0	79.5	73.8	80.5	86.0	88.5	88.1	82.9	71.3	43.4	18.3	4.68	1.83	1.24	1.07
125	65.5	74.7	79.6	80.3	78.1	72.7	67.3	73.6	79.2	81.7	81.0	75.9	65.3	42.7	19.8	7.04	3.23	2.05	1.68
130	59.3	67.6	72.3	73.2	71.0	65.9	61.0	66.7	72.1	74.6	73.8	68.8	58.7	37.1	20.0	9.49	5.77	3.10	2.62
135	52.8	60.6	65.1	65.9	64.0	59.0	54.7	59.8	65.1	67.3	66.4	61.8	52.1	34.4	20.1	12.8	7.61	4.39	3.42
140	47.5	53.7	57.9	58.8	57.0	52.5	48.7	53.1	58.0	60.0	59.2	54.9	47.2	33.8	20.0	13.7	7.90	5.38	3.74
145	42.1	47.1	50.8	51.7	50.1	46.1	43.0	46.7	50.9	52.9	52.0	48.2	42.4	32.4	22.5	15.4	8.99	6.26	4.52
150	36.6	40.8	43.9	44.8	43.4	40.1	37.5	40.4	44.1	45.7	44.9	41.8	36.0	29.9	22.6	15.4	10.2	7.07	5.53
155	31.2	34.7	37.2	37.9	36.9	34.3	32.4	34.5	37.4	38.7	38.1	35.6	31.9	25.6	20.0	15.8	10.5	8.14	6.31
160	26.4	28.9	30.8	31.4	30.6	28.8	27.5	28.7	31.0	32.0	31.6	29.7	26.9	23.8	17.3	15.6	11.6	8.55	7.19
165	21.5	23.4	24.7	25.2	24.6	23.5	22.8	23.4	24.9	25.6	25.3	24.1	21.7	20.1	14.7	14.6	12.0	8.67	7.87
170	13.2	17.4	19.0	19.3	19.2	18.7	18.4	18.5	19.1	19.6	18.7	16.7	12.7	12.5	10.4	8.66	8.16	7.32	7.64
175	8.19	9.65	11.8	14.2	14.4	14.4	14.3	14.3	12.7	10.4	9.09	8.27	7.80	7.70	5.60	5.02	4.24	3.61	3.31
180	8.30	6.96	7.42	6.70	7.03	7.42	11.2	6.69	4.28	6.51	7.31	8.64	7.00	7.01	7.29	7.32	7.09	6.64	4.02

C Range: 0 - 360DEG  
 C Interval: 15.0DEG  
 Test Speed: HIGH  
 Temperature: 25.0DEG  
 Operators: Alan Wang  
 Test Date: 26 August 2023

γ Range: 0 - 180DEG  
 γ Interval: 1.0DEG  
 Test System: EVERFINE GO-R5000\_V2 SYSTEM V2.00.416  
 Humidity: 42.7%  
 Test Distance: 2.500m [K=1.0391]  
 Remarks:

LUMINOUS DISTRIBUTION INTENSITY DATA

Test:U:120.00V I:0.1987A P:22.460W PF:0.9418 Freq:60.00Hz Lamp Flux:1437x1 lm		
NAME: LED Wall Pack	TYPE:LED	WEIGHT:
SPEC.:LVF25M-4D23AC-BK_5000K	DIM.:	SERIAL No.:
MFR.: ASD Lighting Corp	SUR.:	Shielding Angle:

Table--2

UNIT: cd

C( DEG) γ (DEG)	285	300	315	330	345														
0	391	392	392	392	391														
5	382	384	386	388	391														
10	368	371	375	380	385														
15	349	354	361	368	375														
20	326	334	343	352	361														
25	300	310	321	333	344														
30	256	277	297	311	324														
35	209	233	265	288	305														
40	163	188	225	264	285														
45	119	144	183	234	266														
50	78.3	101	142	198	247														
55	43.1	62.8	100	161	227														
60	16.9	29.9	61.3	122	204														
65	1.99	6.51	28.1	82.2	174														
70	0.22	0.56	5.83	44.9	135														
75	0.24	0.24	3.11	19.0	88.5														
80	0.26	0.25	3.17	14.8	46.6														
85	0.27	0.26	3.16	13.2	30.3														
90	0.29	0.28	3.14	11.6	23.3														
95	0.32	0.30	3.11	11.2	22.5														
100	0.33	0.31	3.07	10.9	23.1														
105	0.33	0.32	2.99	10.9	30.0														
110	0.32	0.32	3.22	12.2	39.9														
115	0.43	1.01	3.61	16.1	47.4														
120	1.15	1.90	4.69	20.8	47.7														
125	2.15	3.76	6.44	22.1	46.5														
130	3.30	5.84	7.95	21.5	40.5														
135	4.31	7.41	10.3	21.3	36.3														
140	5.15	8.78	12.1	20.7	34.6														
145	5.91	7.72	14.5	20.3	34.2														
150	6.96	9.83	15.5	20.6	29.9														
155	7.24	9.63	12.5	17.7	24.8														
160	7.51	9.40	12.7	16.1	19.2														
165	7.60	8.88	11.3	13.8	14.0														
170	7.95	8.07	9.09	8.25	9.54														
175	3.44	4.03	3.98	4.70	5.72														
180	2.77	3.76	5.00	6.52	7.53														

C Range: 0 - 360DEG  
 C Interval: 15.0DEG  
 Test Speed: HIGH  
 Temperature: 25.0DEG  
 Operators: Alan Wang  
 Test Date: 26 August 2023

γ Range: 0 - 180DEG  
 γ Interval: 1.0DEG  
 Test System: EVERFINE GO-R5000\_V2 SYSTEM V2.00.416  
 Humidity: 42.7%  
 Test Distance: 2.500m [K=1.0391]  
 Remarks: